

BENCH MARK: CL 4812 ELEV. 1267.653  
 ROBM TAG E CB 75' S/O C/L PROD  
 CENTURION WAY & 45' E/O C/L BOUQUET CYN RD  
 NEWHALL QUAD. 1983

DOUBLE SCALE

CONSTRUCTION NOTES (CONT'D):

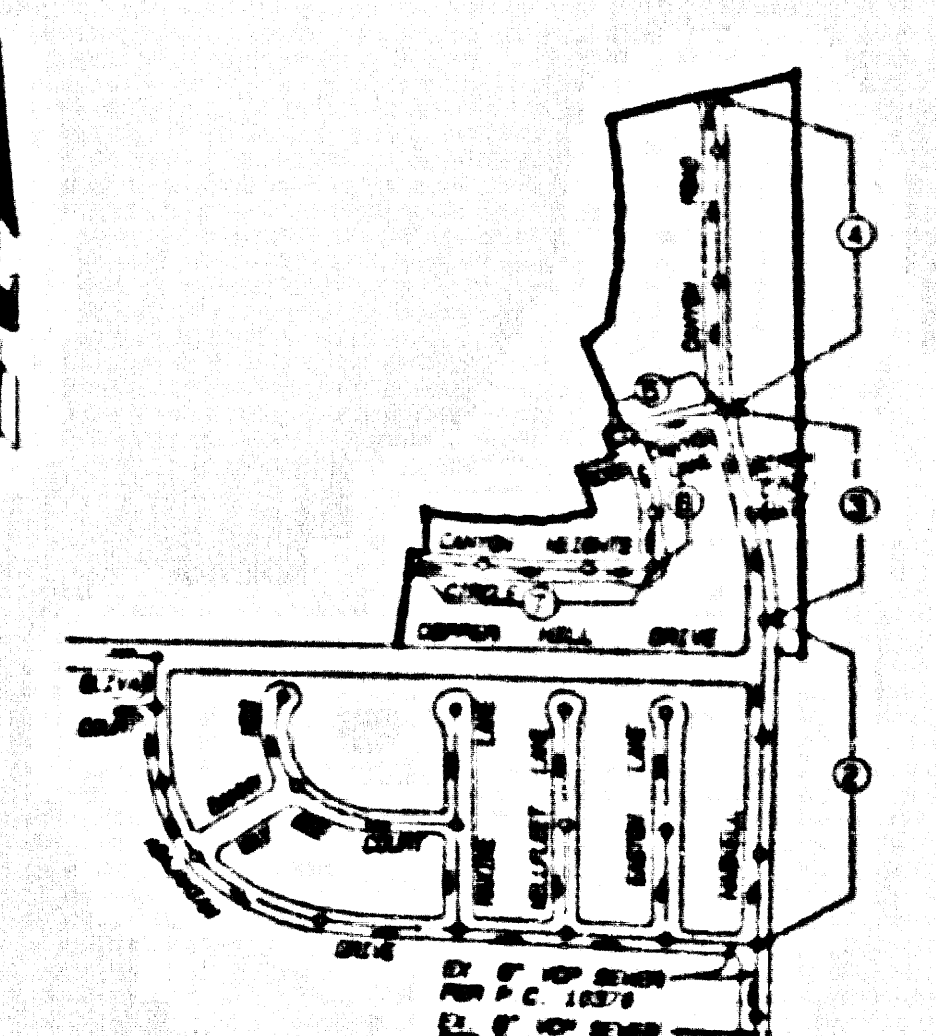
16. ALL COMPLIANCE WITH PART IV OF THE SPECIAL PROVISIONS IS REQUIRED FOR THE INSTALLATION OF ALL COMPOSITE PIPES.
17. HANDLES WITH STIFF ENDS AND CLAMPS ARE REQUIRED FOR THE CONNECTION OF ALL COMPOSITE PIPES TO MANHOLE STRUCTURES.
18. ALL SIZES SHALL BE USED FOR VIB AND HOUSE LATERAL CONNECTIONS TO ALL COMPOSITE MAINLINE SEWER PIPES.
19. ALL COMPOSITE PIPES SHALL BE INSTALLED IN CONFORMANCE WITH THE TABLE IN SECTION 2-2.5 OF PART IV OF THE SPECIAL PROVISIONS.
20. THREE INCHES DEFLECTION COMPLIANCE IS REQUIRED FOR RADIUS OF CURVATURE LESS THAN 200 FEET FOR ALL COMPOSITE PIPES.
21. NO CONNECTIONS FOR DISPOSAL OF INDUSTRIAL WASTES SHALL BE MADE TO ANY SANITARY SEWER CONNECTION.
22. BEFORE BREAKING INTO OR CONSTRUCTION ON A COUNTY SANITATION DISTRICT SEWER AND PRIOR TO FINAL ACCEPTANCE OF THE PROJECT, A SANITATION DISTRICT INSPECTOR SHALL BE NOTIFIED BY PHONE AT (800) 388-4883 SO THAT REQUIRED INSPECTIONS CAN BE MADE.

PRIVATE ENGINEERS NOTICE TO CONTRACTORS:

THE EXISTENCE AND LOCATION OF ANY UNDERGROUND UTILITY PIPES OR STRUCTURES SHOWN ON THESE PLANS IS OBTAINED BY A SEARCH OF AVAILABLE RECORDS TO THE BEST OF OUR KNOWLEDGE. THERE ARE NO EXISTING UTILITIES EXCEPT AS SHOWN ON THIS PLAN. THE CONTRACTOR IS REQUIRED TO TAKE PRECAUTIONARY MEASURES TO PROTECT THE UTILITY LINES SHOWN AND ANY OTHER LINES NOT OF RECORD OR NOT SHOWN ON THIS PLAN. PRIOR TO EXCAVATION, THE CONTRACTOR SHALL CALL THE TOLL FREE 1-800-488-4133 TO VERIFY THE UNDERGROUND LOCATION OF GAS AND TELEPHONE LINES. THE CONTRACTOR SHALL ALSO CALL THE TOLL FREE 1-800-488-4871 TO VERIFY THE LOCATION OF UNDERGROUND TELEPHONE LINES.

REGISTERED CIVIL ENGINEER *Paul B. Stone* NO. 19,334

BEFORE BREAKING INTO OR CONSTRUCTION ON A COUNTY SANITATION DISTRICT SEWER AND PRIOR TO FINAL ACCEPTANCE OF THE PROJECT, A SANITATION DISTRICT INSPECTOR SHALL BE NOTIFIED BY PHONE AT (800) 388-4883 SO THAT REQUIRED INSPECTIONS CAN BE MADE.



INDEX MAP  
SCALE: 1" = 500'

P.C. 11238 TRACT NO. 46183-1  
 THOMAS GUIDE PG. NO. 124-E3

NOTE: NUMBERS IN CIRCLES INDICATE PAGE NUMBERS

GENERAL NOTES:

1. A SEWER CONNECTION SHALL BE OBTAINED AND A PIPE MAIN, A CONNECTION, STRUCTURE AND RECORD PLANS TO THE SANITATION DISTRICT SHALL BE OBTAINED FROM THE SANITATION DISTRICT OFFICE. THE CONTRACTOR SHALL BE RESPONSIBLE FOR OBTAINING THE NECESSARY PERMITS AND RECORDS FROM THE SANITATION DISTRICT OFFICE. THE CONTRACTOR SHALL BE RESPONSIBLE FOR OBTAINING THE NECESSARY PERMITS AND RECORDS FROM THE SANITATION DISTRICT OFFICE.
2. APPROVAL OF THIS PLAN BY THE COUNTY OF LOS ANGELES DOES NOT CONSTITUTE A REPRESENTATION AS TO ACCURACY OF THE INFORMATION CONTAINED HEREIN. THE CONTRACTOR SHALL BE RESPONSIBLE FOR OBTAINING THE NECESSARY PERMITS AND RECORDS FROM THE SANITATION DISTRICT OFFICE.
3. APPROVAL OF THIS PLAN BY THE COUNTY OF LOS ANGELES DOES NOT CONSTITUTE A REPRESENTATION AS TO ACCURACY OF THE INFORMATION CONTAINED HEREIN. THE CONTRACTOR SHALL BE RESPONSIBLE FOR OBTAINING THE NECESSARY PERMITS AND RECORDS FROM THE SANITATION DISTRICT OFFICE.
4. APPROVAL OF THIS PLAN BY THE COUNTY OF LOS ANGELES DOES NOT CONSTITUTE A REPRESENTATION AS TO ACCURACY OF THE INFORMATION CONTAINED HEREIN. THE CONTRACTOR SHALL BE RESPONSIBLE FOR OBTAINING THE NECESSARY PERMITS AND RECORDS FROM THE SANITATION DISTRICT OFFICE.
5. APPROVAL OF THIS PLAN BY THE COUNTY OF LOS ANGELES DOES NOT CONSTITUTE A REPRESENTATION AS TO ACCURACY OF THE INFORMATION CONTAINED HEREIN. THE CONTRACTOR SHALL BE RESPONSIBLE FOR OBTAINING THE NECESSARY PERMITS AND RECORDS FROM THE SANITATION DISTRICT OFFICE.
6. APPROVAL OF THIS PLAN BY THE COUNTY OF LOS ANGELES DOES NOT CONSTITUTE A REPRESENTATION AS TO ACCURACY OF THE INFORMATION CONTAINED HEREIN. THE CONTRACTOR SHALL BE RESPONSIBLE FOR OBTAINING THE NECESSARY PERMITS AND RECORDS FROM THE SANITATION DISTRICT OFFICE.
7. APPROVAL OF THIS PLAN BY THE COUNTY OF LOS ANGELES DOES NOT CONSTITUTE A REPRESENTATION AS TO ACCURACY OF THE INFORMATION CONTAINED HEREIN. THE CONTRACTOR SHALL BE RESPONSIBLE FOR OBTAINING THE NECESSARY PERMITS AND RECORDS FROM THE SANITATION DISTRICT OFFICE.
8. APPROVAL OF THIS PLAN BY THE COUNTY OF LOS ANGELES DOES NOT CONSTITUTE A REPRESENTATION AS TO ACCURACY OF THE INFORMATION CONTAINED HEREIN. THE CONTRACTOR SHALL BE RESPONSIBLE FOR OBTAINING THE NECESSARY PERMITS AND RECORDS FROM THE SANITATION DISTRICT OFFICE.
9. APPROVAL OF THIS PLAN BY THE COUNTY OF LOS ANGELES DOES NOT CONSTITUTE A REPRESENTATION AS TO ACCURACY OF THE INFORMATION CONTAINED HEREIN. THE CONTRACTOR SHALL BE RESPONSIBLE FOR OBTAINING THE NECESSARY PERMITS AND RECORDS FROM THE SANITATION DISTRICT OFFICE.
10. APPROVAL OF THIS PLAN BY THE COUNTY OF LOS ANGELES DOES NOT CONSTITUTE A REPRESENTATION AS TO ACCURACY OF THE INFORMATION CONTAINED HEREIN. THE CONTRACTOR SHALL BE RESPONSIBLE FOR OBTAINING THE NECESSARY PERMITS AND RECORDS FROM THE SANITATION DISTRICT OFFICE.
11. APPROVAL OF THIS PLAN BY THE COUNTY OF LOS ANGELES DOES NOT CONSTITUTE A REPRESENTATION AS TO ACCURACY OF THE INFORMATION CONTAINED HEREIN. THE CONTRACTOR SHALL BE RESPONSIBLE FOR OBTAINING THE NECESSARY PERMITS AND RECORDS FROM THE SANITATION DISTRICT OFFICE.
12. APPROVAL OF THIS PLAN BY THE COUNTY OF LOS ANGELES DOES NOT CONSTITUTE A REPRESENTATION AS TO ACCURACY OF THE INFORMATION CONTAINED HEREIN. THE CONTRACTOR SHALL BE RESPONSIBLE FOR OBTAINING THE NECESSARY PERMITS AND RECORDS FROM THE SANITATION DISTRICT OFFICE.
13. APPROVAL OF THIS PLAN BY THE COUNTY OF LOS ANGELES DOES NOT CONSTITUTE A REPRESENTATION AS TO ACCURACY OF THE INFORMATION CONTAINED HEREIN. THE CONTRACTOR SHALL BE RESPONSIBLE FOR OBTAINING THE NECESSARY PERMITS AND RECORDS FROM THE SANITATION DISTRICT OFFICE.
14. APPROVAL OF THIS PLAN BY THE COUNTY OF LOS ANGELES DOES NOT CONSTITUTE A REPRESENTATION AS TO ACCURACY OF THE INFORMATION CONTAINED HEREIN. THE CONTRACTOR SHALL BE RESPONSIBLE FOR OBTAINING THE NECESSARY PERMITS AND RECORDS FROM THE SANITATION DISTRICT OFFICE.
15. APPROVAL OF THIS PLAN BY THE COUNTY OF LOS ANGELES DOES NOT CONSTITUTE A REPRESENTATION AS TO ACCURACY OF THE INFORMATION CONTAINED HEREIN. THE CONTRACTOR SHALL BE RESPONSIBLE FOR OBTAINING THE NECESSARY PERMITS AND RECORDS FROM THE SANITATION DISTRICT OFFICE.

CONSTRUCTION NOTES:

1. ALL STRUCTURES SHALL BE CONSTRUCTED IN ACCORDANCE WITH THE STANDARD SPECIFICATIONS FOR PUBLIC WORKS CONSTRUCTION, LATEST EDITION, AS ADOPTED BY THE BOARD OF SUPERVISORS OF THE COUNTY OF LOS ANGELES, CALIFORNIA.
2. ALL STRUCTURES SHALL BE CONSTRUCTED IN ACCORDANCE WITH THE STANDARD SPECIFICATIONS FOR PUBLIC WORKS CONSTRUCTION, LATEST EDITION, AS ADOPTED BY THE BOARD OF SUPERVISORS OF THE COUNTY OF LOS ANGELES, CALIFORNIA.
3. ALL STRUCTURES SHALL BE CONSTRUCTED IN ACCORDANCE WITH THE STANDARD SPECIFICATIONS FOR PUBLIC WORKS CONSTRUCTION, LATEST EDITION, AS ADOPTED BY THE BOARD OF SUPERVISORS OF THE COUNTY OF LOS ANGELES, CALIFORNIA.
4. ALL STRUCTURES SHALL BE CONSTRUCTED IN ACCORDANCE WITH THE STANDARD SPECIFICATIONS FOR PUBLIC WORKS CONSTRUCTION, LATEST EDITION, AS ADOPTED BY THE BOARD OF SUPERVISORS OF THE COUNTY OF LOS ANGELES, CALIFORNIA.
5. ALL STRUCTURES SHALL BE CONSTRUCTED IN ACCORDANCE WITH THE STANDARD SPECIFICATIONS FOR PUBLIC WORKS CONSTRUCTION, LATEST EDITION, AS ADOPTED BY THE BOARD OF SUPERVISORS OF THE COUNTY OF LOS ANGELES, CALIFORNIA.
6. ALL STRUCTURES SHALL BE CONSTRUCTED IN ACCORDANCE WITH THE STANDARD SPECIFICATIONS FOR PUBLIC WORKS CONSTRUCTION, LATEST EDITION, AS ADOPTED BY THE BOARD OF SUPERVISORS OF THE COUNTY OF LOS ANGELES, CALIFORNIA.
7. ALL STRUCTURES SHALL BE CONSTRUCTED IN ACCORDANCE WITH THE STANDARD SPECIFICATIONS FOR PUBLIC WORKS CONSTRUCTION, LATEST EDITION, AS ADOPTED BY THE BOARD OF SUPERVISORS OF THE COUNTY OF LOS ANGELES, CALIFORNIA.
8. ALL STRUCTURES SHALL BE CONSTRUCTED IN ACCORDANCE WITH THE STANDARD SPECIFICATIONS FOR PUBLIC WORKS CONSTRUCTION, LATEST EDITION, AS ADOPTED BY THE BOARD OF SUPERVISORS OF THE COUNTY OF LOS ANGELES, CALIFORNIA.
9. ALL STRUCTURES SHALL BE CONSTRUCTED IN ACCORDANCE WITH THE STANDARD SPECIFICATIONS FOR PUBLIC WORKS CONSTRUCTION, LATEST EDITION, AS ADOPTED BY THE BOARD OF SUPERVISORS OF THE COUNTY OF LOS ANGELES, CALIFORNIA.
10. ALL STRUCTURES SHALL BE CONSTRUCTED IN ACCORDANCE WITH THE STANDARD SPECIFICATIONS FOR PUBLIC WORKS CONSTRUCTION, LATEST EDITION, AS ADOPTED BY THE BOARD OF SUPERVISORS OF THE COUNTY OF LOS ANGELES, CALIFORNIA.
11. ALL STRUCTURES SHALL BE CONSTRUCTED IN ACCORDANCE WITH THE STANDARD SPECIFICATIONS FOR PUBLIC WORKS CONSTRUCTION, LATEST EDITION, AS ADOPTED BY THE BOARD OF SUPERVISORS OF THE COUNTY OF LOS ANGELES, CALIFORNIA.
12. ALL STRUCTURES SHALL BE CONSTRUCTED IN ACCORDANCE WITH THE STANDARD SPECIFICATIONS FOR PUBLIC WORKS CONSTRUCTION, LATEST EDITION, AS ADOPTED BY THE BOARD OF SUPERVISORS OF THE COUNTY OF LOS ANGELES, CALIFORNIA.
13. ALL STRUCTURES SHALL BE CONSTRUCTED IN ACCORDANCE WITH THE STANDARD SPECIFICATIONS FOR PUBLIC WORKS CONSTRUCTION, LATEST EDITION, AS ADOPTED BY THE BOARD OF SUPERVISORS OF THE COUNTY OF LOS ANGELES, CALIFORNIA.
14. ALL STRUCTURES SHALL BE CONSTRUCTED IN ACCORDANCE WITH THE STANDARD SPECIFICATIONS FOR PUBLIC WORKS CONSTRUCTION, LATEST EDITION, AS ADOPTED BY THE BOARD OF SUPERVISORS OF THE COUNTY OF LOS ANGELES, CALIFORNIA.
15. ALL STRUCTURES SHALL BE CONSTRUCTED IN ACCORDANCE WITH THE STANDARD SPECIFICATIONS FOR PUBLIC WORKS CONSTRUCTION, LATEST EDITION, AS ADOPTED BY THE BOARD OF SUPERVISORS OF THE COUNTY OF LOS ANGELES, CALIFORNIA.

PREP. L.L.E. ALIGNMENT AND GRADE OF PAGE 1

SANITARY SEWERS

TO BE CONSTRUCTED IN

TRACT No. 46183-1

PRIVATE CONTRACT NO. 11238

INDEX 1332

4 SHEETS: 7 PAGES

SCALE: VERT. 1" = 8' HORIZ. 1" = 40' MAR. 1996

PREPARED IN THE OFFICES OF SIXARD ENGINEERING ASSOCIATES

15238 BLAVAS BLVD., VAN NUYS, CA 91411

REG. C.E. NO. 19222

THE FOLLOWING LATEST REVISED STANDARD PLANS ON FILE IN THE OFFICE OF THE DEPARTMENT OF PUBLIC WORKS SHALL APPLY TO THE CONSTRUCTION OF THIS PROJECT:

STANDARD PLAN NO. 10-1	STANDARD PLAN NO. 10-1
STANDARD PLAN NO. 10-2	STANDARD PLAN NO. 10-2
STANDARD PLAN NO. 10-3	STANDARD PLAN NO. 10-3
STANDARD PLAN NO. 10-4	STANDARD PLAN NO. 10-4
STANDARD PLAN NO. 10-5	STANDARD PLAN NO. 10-5
STANDARD PLAN NO. 10-6	STANDARD PLAN NO. 10-6
STANDARD PLAN NO. 10-7	STANDARD PLAN NO. 10-7
STANDARD PLAN NO. 10-8	STANDARD PLAN NO. 10-8
STANDARD PLAN NO. 10-9	STANDARD PLAN NO. 10-9
STANDARD PLAN NO. 10-10	STANDARD PLAN NO. 10-10
STANDARD PLAN NO. 10-11	STANDARD PLAN NO. 10-11
STANDARD PLAN NO. 10-12	STANDARD PLAN NO. 10-12
STANDARD PLAN NO. 10-13	STANDARD PLAN NO. 10-13
STANDARD PLAN NO. 10-14	STANDARD PLAN NO. 10-14
STANDARD PLAN NO. 10-15	STANDARD PLAN NO. 10-15
STANDARD PLAN NO. 10-16	STANDARD PLAN NO. 10-16
STANDARD PLAN NO. 10-17	STANDARD PLAN NO. 10-17
STANDARD PLAN NO. 10-18	STANDARD PLAN NO. 10-18
STANDARD PLAN NO. 10-19	STANDARD PLAN NO. 10-19
STANDARD PLAN NO. 10-20	STANDARD PLAN NO. 10-20
STANDARD PLAN NO. 10-21	STANDARD PLAN NO. 10-21
STANDARD PLAN NO. 10-22	STANDARD PLAN NO. 10-22
STANDARD PLAN NO. 10-23	STANDARD PLAN NO. 10-23
STANDARD PLAN NO. 10-24	STANDARD PLAN NO. 10-24
STANDARD PLAN NO. 10-25	STANDARD PLAN NO. 10-25
STANDARD PLAN NO. 10-26	STANDARD PLAN NO. 10-26
STANDARD PLAN NO. 10-27	STANDARD PLAN NO. 10-27
STANDARD PLAN NO. 10-28	STANDARD PLAN NO. 10-28
STANDARD PLAN NO. 10-29	STANDARD PLAN NO. 10-29
STANDARD PLAN NO. 10-30	STANDARD PLAN NO. 10-30
STANDARD PLAN NO. 10-31	STANDARD PLAN NO. 10-31
STANDARD PLAN NO. 10-32	STANDARD PLAN NO. 10-32
STANDARD PLAN NO. 10-33	STANDARD PLAN NO. 10-33
STANDARD PLAN NO. 10-34	STANDARD PLAN NO. 10-34
STANDARD PLAN NO. 10-35	STANDARD PLAN NO. 10-35
STANDARD PLAN NO. 10-36	STANDARD PLAN NO. 10-36
STANDARD PLAN NO. 10-37	STANDARD PLAN NO. 10-37
STANDARD PLAN NO. 10-38	STANDARD PLAN NO. 10-38
STANDARD PLAN NO. 10-39	STANDARD PLAN NO. 10-39
STANDARD PLAN NO. 10-40	STANDARD PLAN NO. 10-40
STANDARD PLAN NO. 10-41	STANDARD PLAN NO. 10-41
STANDARD PLAN NO. 10-42	STANDARD PLAN NO. 10-42
STANDARD PLAN NO. 10-43	STANDARD PLAN NO. 10-43
STANDARD PLAN NO. 10-44	STANDARD PLAN NO. 10-44
STANDARD PLAN NO. 10-45	STANDARD PLAN NO. 10-45
STANDARD PLAN NO. 10-46	STANDARD PLAN NO. 10-46
STANDARD PLAN NO. 10-47	STANDARD PLAN NO. 10-47
STANDARD PLAN NO. 10-48	STANDARD PLAN NO. 10-48
STANDARD PLAN NO. 10-49	STANDARD PLAN NO. 10-49
STANDARD PLAN NO. 10-50	STANDARD PLAN NO. 10-50

COUNTY OF LOS ANGELES, CALIFORNIA

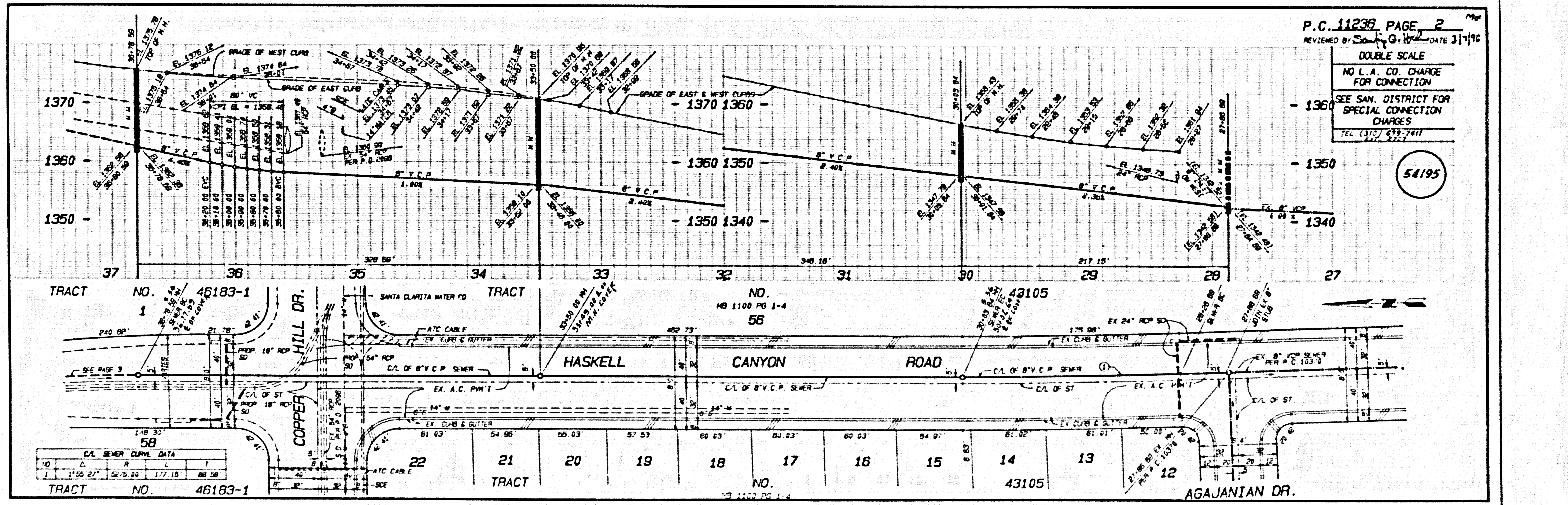
HARRY W. STONE, DIRECTOR OF PUBLIC WORKS

APPROVED: *Paul B. Stone* 3/17/96

DECEDED: *Paul B. Stone* 3-7-96

NO. 4. S. NO. 45871

SANTA CLARITA VALLEY, B.D. DIST. 22



P.C. 11238 PAGE 2

REVIEWED BY: *Paul B. Stone* DATE 3/17/96

DOUBLE SCALE

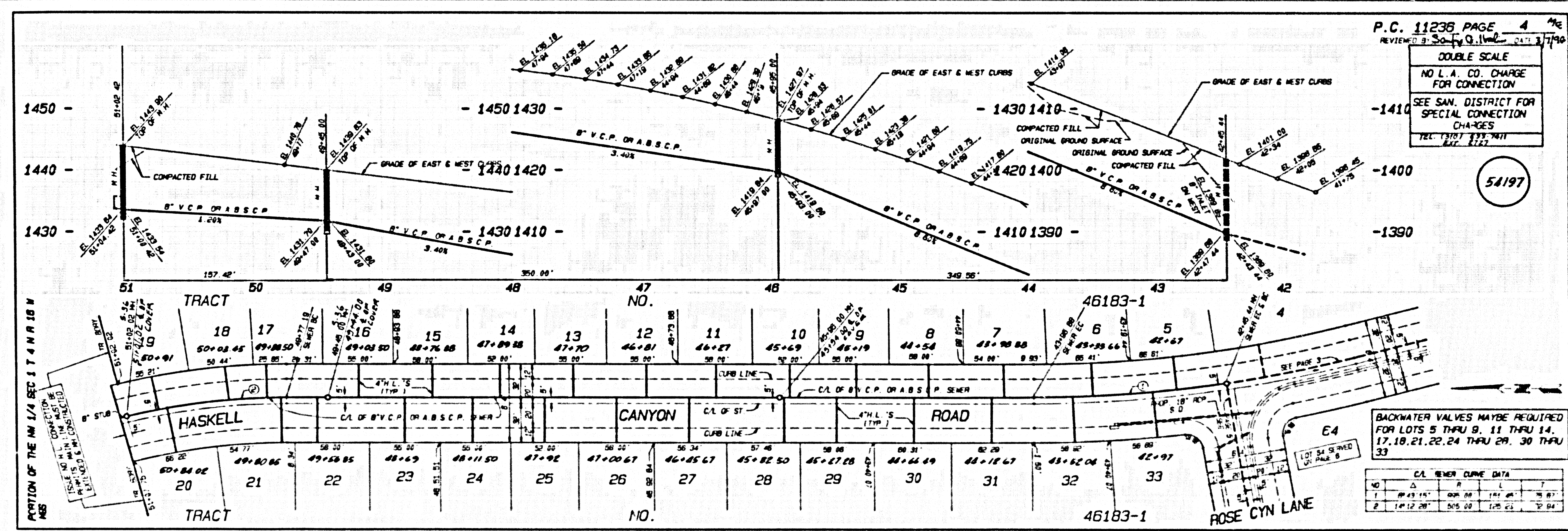
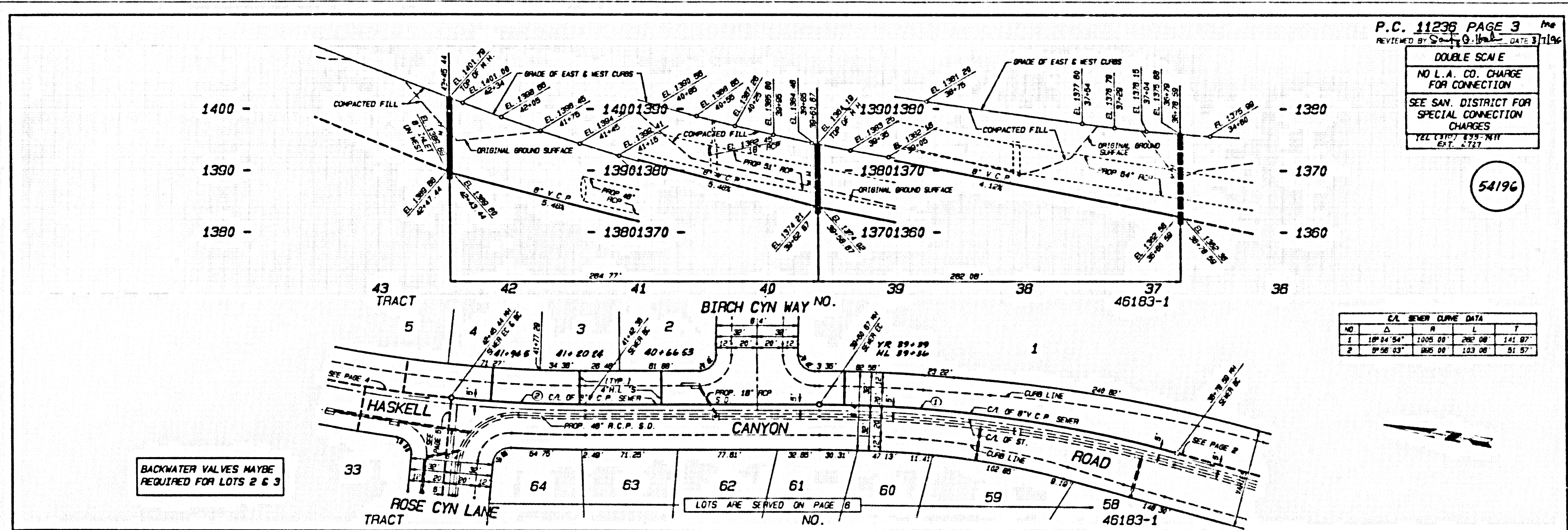
NO L.A. CO. CHARGE FOR CONNECTION

SEE SAN. DISTRICT FOR SPECIAL CONNECTION CHARGES

TEL. (310) 637-7411

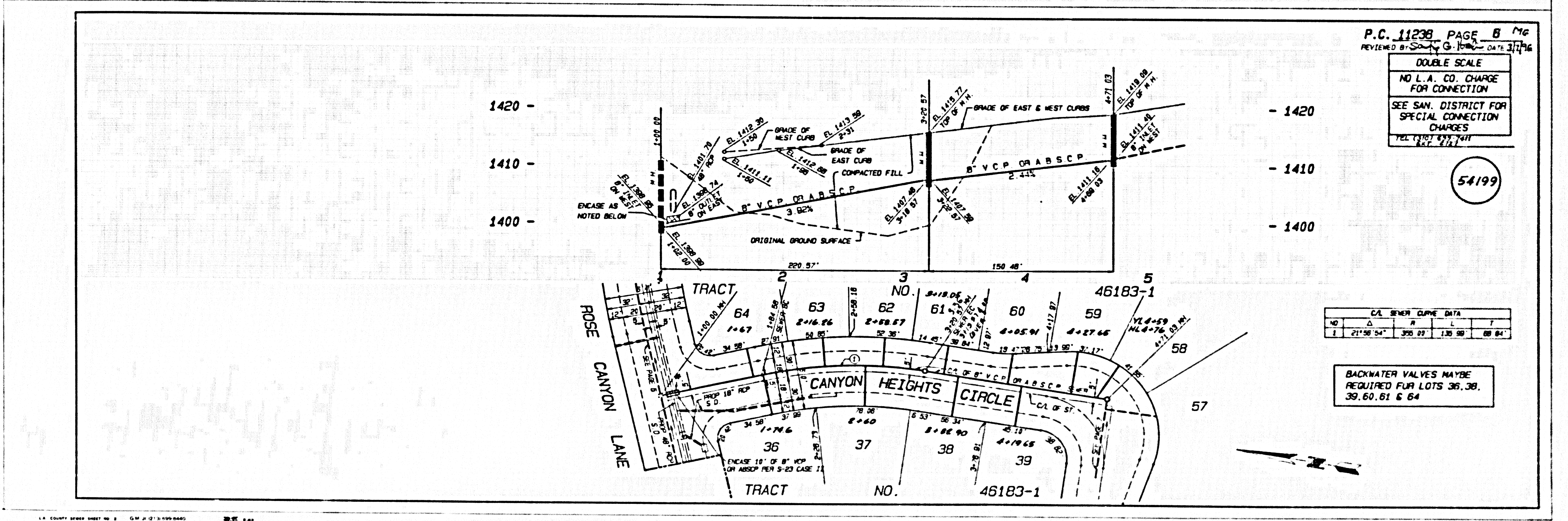
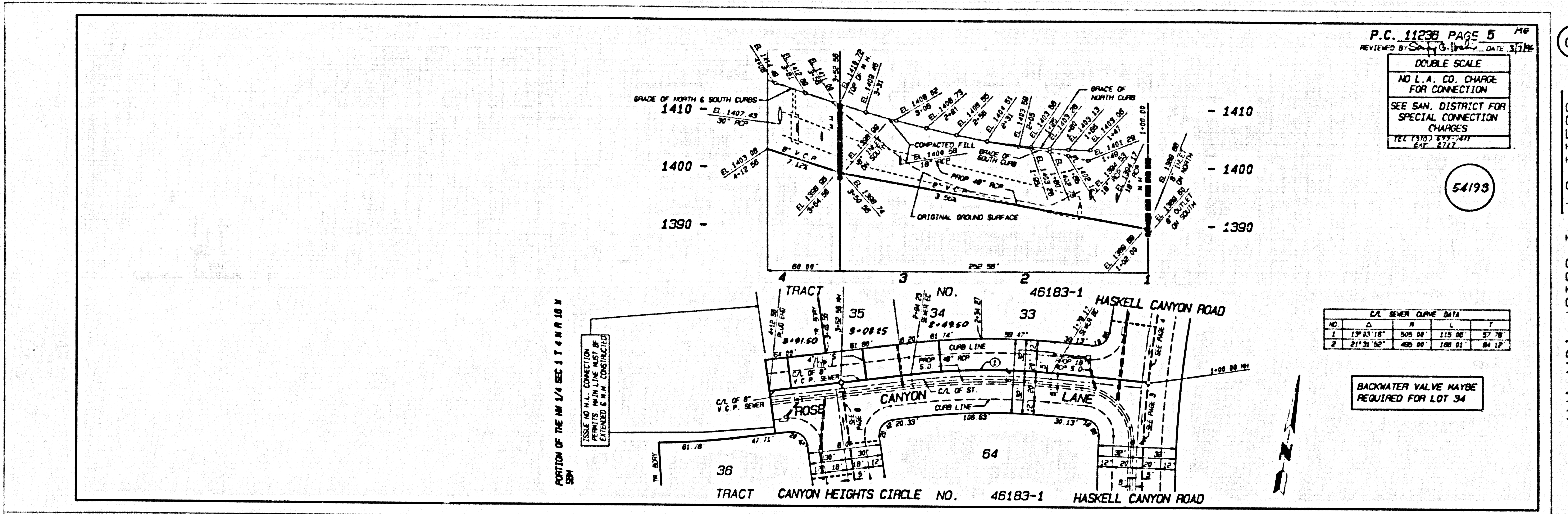
54195

TRACT NO. 46183-1 BC 11538 ON PT 1

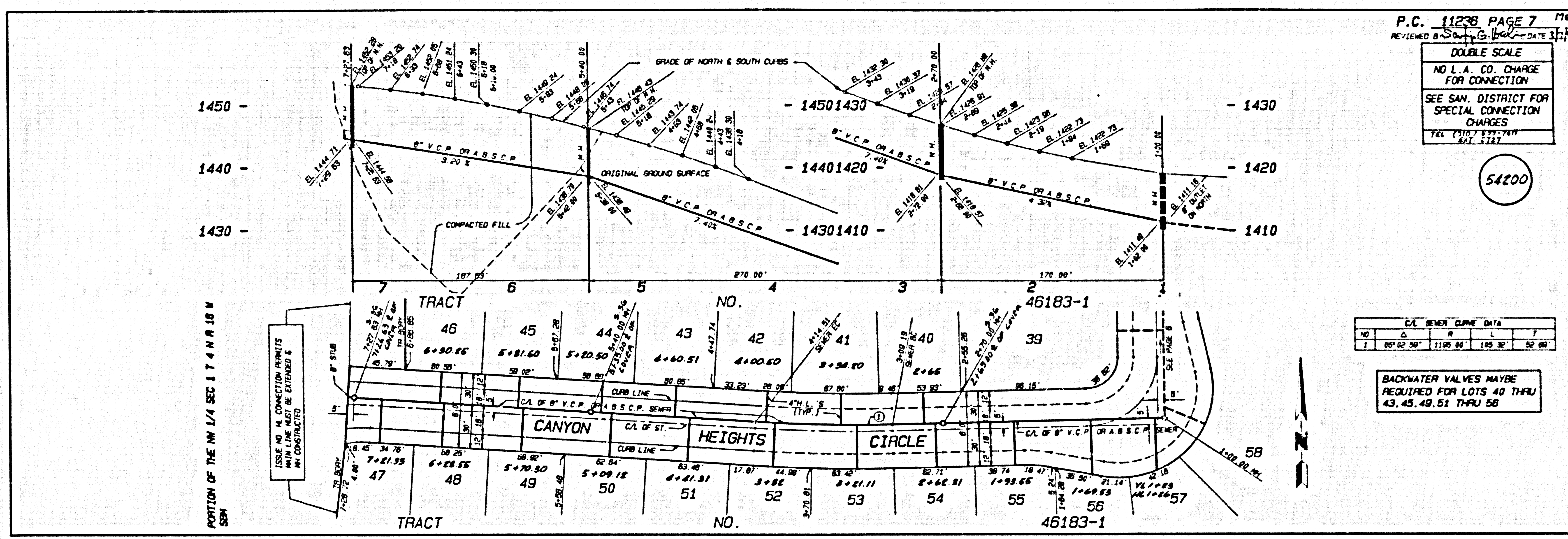


5

RES 11 09 1 68183-1 OM 91



③  
 46183-1 BC 11530  
 18' W. 46183-1 1-83181 0M AT



P.C. 11238 PAGE 7  
 REVIEWED BY: [Signature] DATE: 3/1/88

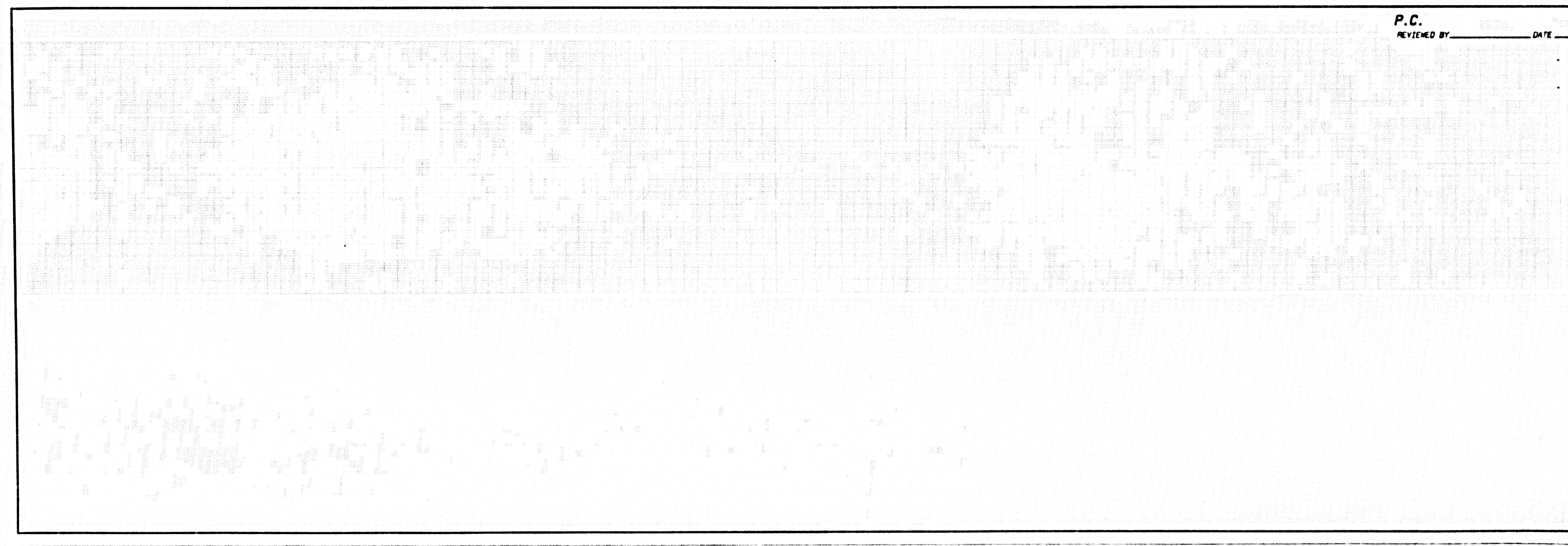
DOUBLE SCALE  
 NO L.A. CO. CHARGE FOR CONNECTION  
 SEE SAN. DISTRICT FOR SPECIAL CONNECTION CHARGES  
 TEL (310) 533-7411 EXT. 2167

54200

CL. BENCH CURVE DATA

NO.	Δ	R	L	T
1	05° 52' 50"	1185.00'	185.32'	52.00'

BACKWATER VALVES MAYBE REQUIRED FOR LOTS 40 THRU 43, 45, 49, 51 THRU 58



P.C. \_\_\_\_\_  
 REVIEWED BY: \_\_\_\_\_ DATE: \_\_\_\_\_

4  
 46311 09 1-88184-0M RT