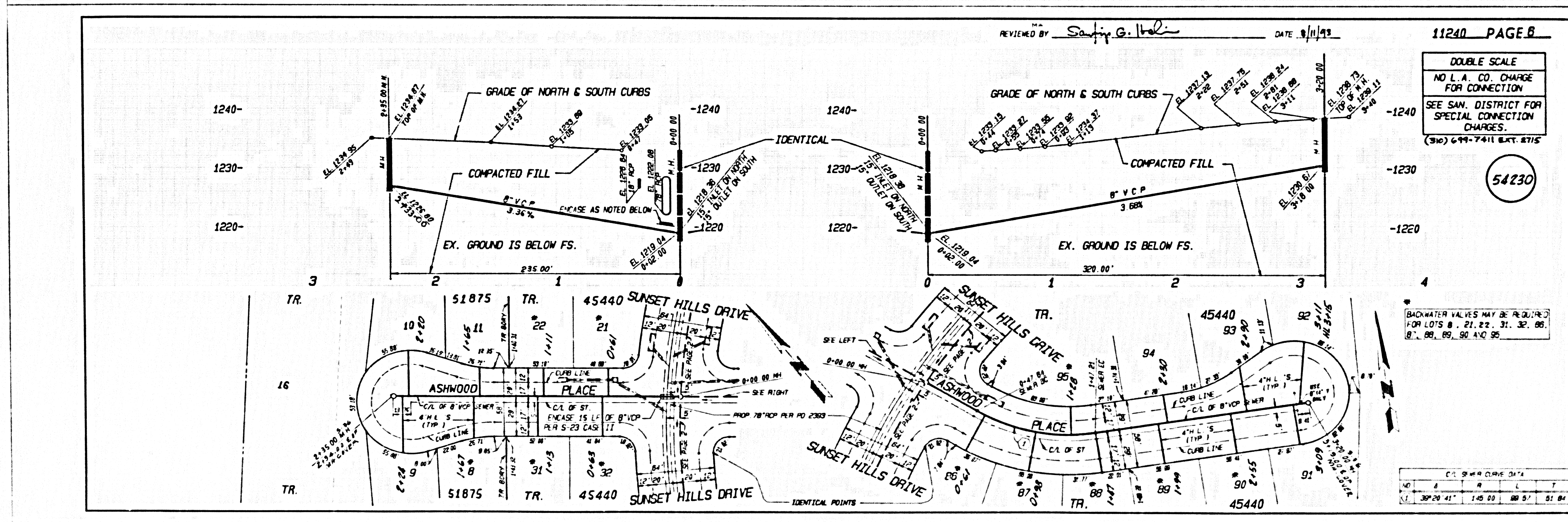
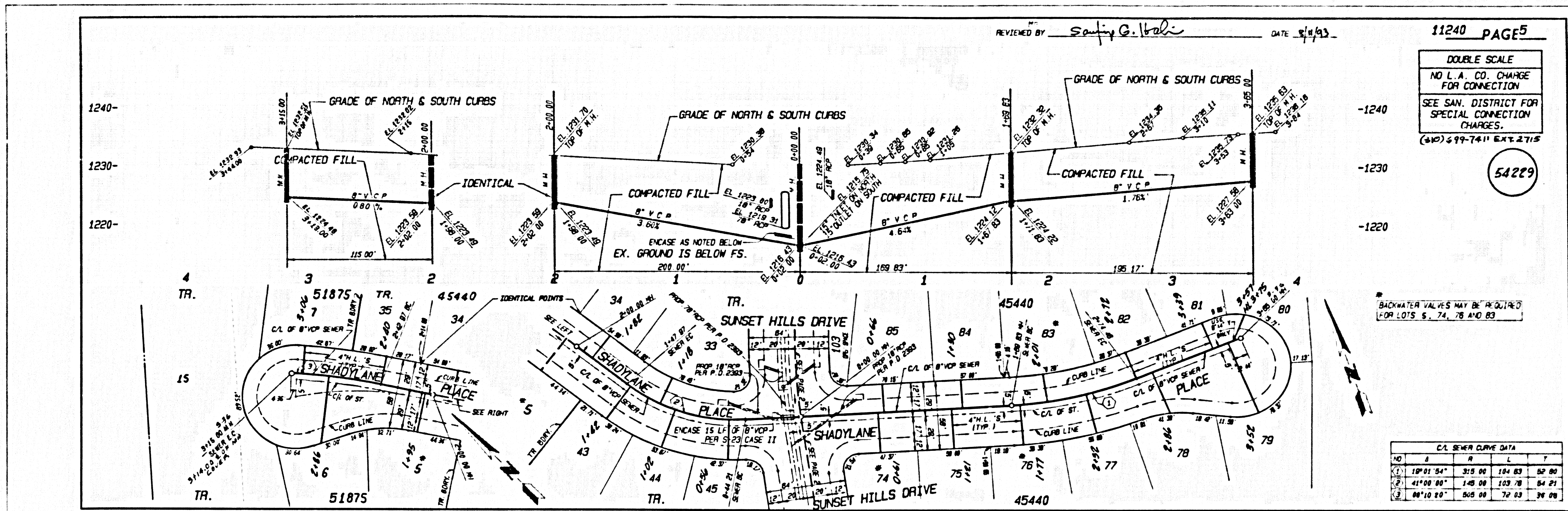
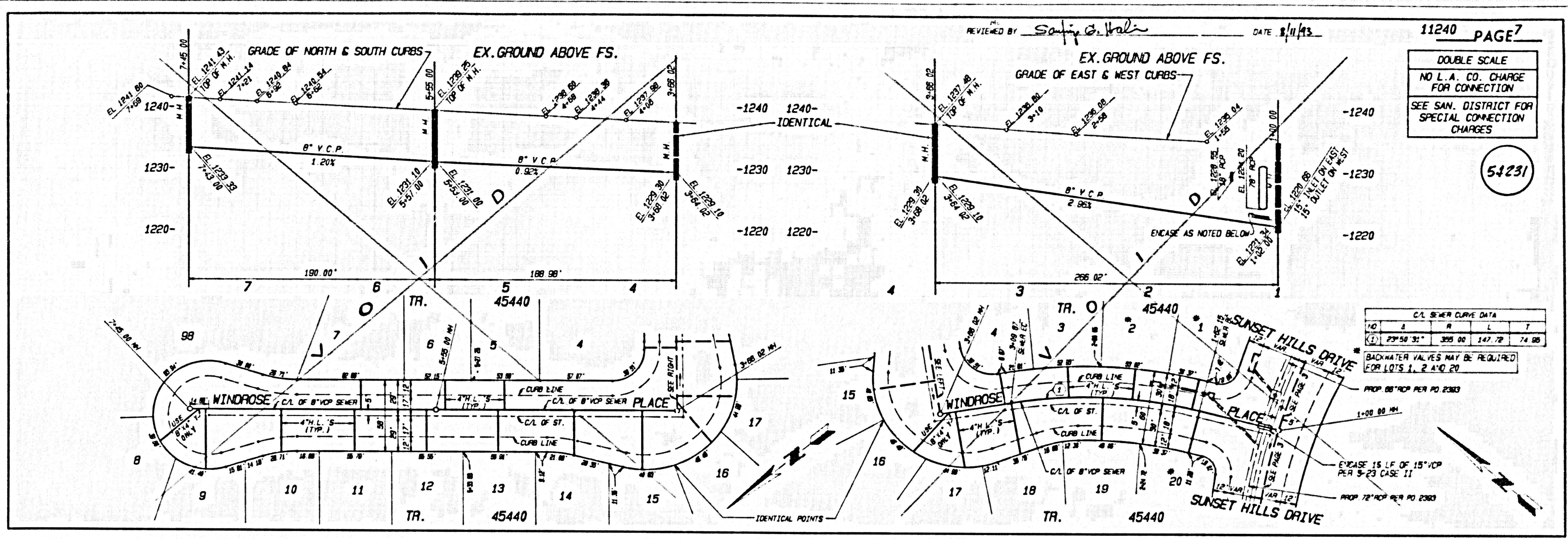


5
0511 09 304424 OM RT
2812 0M



0511 09 30424 .OM .RT
21812 0M



REVIEWED BY *Sahaj G. Irali* DATE 8/11/13

11240 PAGE 7

DOUBLE SCALE
NO L.A. CO. CHARGE FOR CONNECTION
SEE SAN. DISTRICT FOR SPECIAL CONNECTION CHARGES

54231

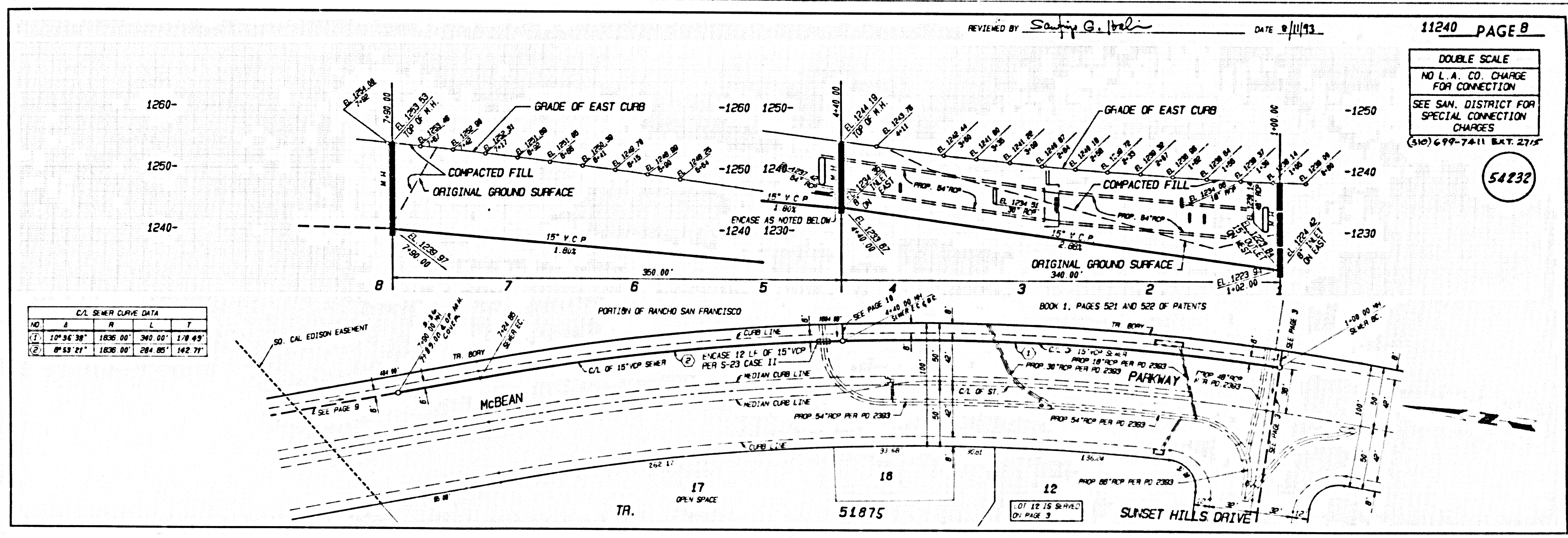
C/L SEWER CURVE DATA						
NO.	A	R	L	T		
(1)	229°50'31"	355.00'	147.72'	74.98'		

BACKWATER VALVES MAY BE REQUIRED FOR LOTS 1, 2 AND 20

PROP. 80' TYP PER PD 2383

EASEASE 15 LF OF 15" VCP PER S-23 CASE 11

PROP. 72' TYP PER PD 2383



REVIEWED BY *Sahaj G. Irali* DATE 8/11/13

11240 PAGE 8

DOUBLE SCALE
NO L.A. CO. CHARGE FOR CONNECTION
SEE SAN. DISTRICT FOR SPECIAL CONNECTION CHARGES
(310) 699-7411 EXT. 2715

54232

C/L SEWER CURVE DATA						
NO.	A	R	L	T		
(1)	10°36'38"	1836.00'	340.00'	178.49'		
(2)	8°53'21"	1836.00'	284.85'	142.71'		

11240 PAGE 7
 11240 PAGE 8
 04511 39 3 04524 0M RT
 25812 0M RT

