

SANITARY SEWERS

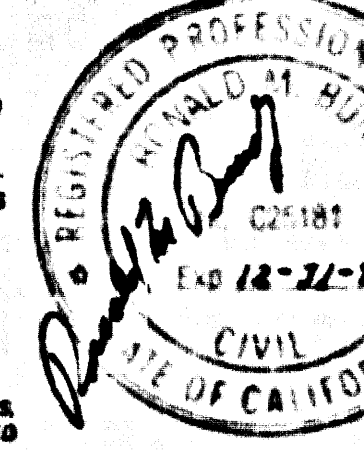
TO BE CONSTRUCTED IN
CENTINELA CARWASH
 3835 CENTINELA AVE., LOS ANGELES, CA.

PRIVATE CONTRACT NO. 11269

INDEX 153C
 1 SHEETS; 1 PAGES

SCALE: HORIZ. 1" = 40' 12 Nov. 1973

PREPARED IN THE OFFICES OF
JFC DESIGN GROUP INC.
 3031 SAVING AVE. #7, SANTA ANA, CALIF.
 TEL. NO. (714) 950-2570



THE FOLLOWING LATEST REVISED STANDARD PLANS ON FILE IN THE OFFICE OF THE DEPARTMENT OF PUBLIC WORKS SHALL APPLY IN THE CONSTRUCTION OF THIS PROJECT:

LEGEND	D-1
MINIMUM PUBLIC UTILITY SAFETY REQUIREMENTS	D-2
MANHOLE	D-3
MANHOLE FRAMING	D-4
MANHOLE FRAMING CONCRETE MANHOLE	D-5
MANHOLE FRAMING CONCRETE MANHOLE	D-6
MANHOLE FRAMING CONCRETE MANHOLE	D-7
MANHOLE FRAMING CONCRETE MANHOLE	D-8
MANHOLE FRAMING CONCRETE MANHOLE	D-9
MANHOLE FRAMING CONCRETE MANHOLE	D-10
MANHOLE FRAMING CONCRETE MANHOLE	D-11
MANHOLE FRAMING CONCRETE MANHOLE	D-12
MANHOLE FRAMING CONCRETE MANHOLE	D-13
MANHOLE FRAMING CONCRETE MANHOLE	D-14
MANHOLE FRAMING CONCRETE MANHOLE	D-15
MANHOLE FRAMING CONCRETE MANHOLE	D-16
MANHOLE FRAMING CONCRETE MANHOLE	D-17
MANHOLE FRAMING CONCRETE MANHOLE	D-18
MANHOLE FRAMING CONCRETE MANHOLE	D-19
MANHOLE FRAMING CONCRETE MANHOLE	D-20
MANHOLE FRAMING CONCRETE MANHOLE	D-21
MANHOLE FRAMING CONCRETE MANHOLE	D-22
MANHOLE FRAMING CONCRETE MANHOLE	D-23
MANHOLE FRAMING CONCRETE MANHOLE	D-24
MANHOLE FRAMING CONCRETE MANHOLE	D-25
MANHOLE FRAMING CONCRETE MANHOLE	D-26
MANHOLE FRAMING CONCRETE MANHOLE	D-27
MANHOLE FRAMING CONCRETE MANHOLE	D-28
MANHOLE FRAMING CONCRETE MANHOLE	D-29
MANHOLE FRAMING CONCRETE MANHOLE	D-30
MANHOLE FRAMING CONCRETE MANHOLE	D-31
MANHOLE FRAMING CONCRETE MANHOLE	D-32
MANHOLE FRAMING CONCRETE MANHOLE	D-33
MANHOLE FRAMING CONCRETE MANHOLE	D-34
MANHOLE FRAMING CONCRETE MANHOLE	D-35
MANHOLE FRAMING CONCRETE MANHOLE	D-36
MANHOLE FRAMING CONCRETE MANHOLE	D-37
MANHOLE FRAMING CONCRETE MANHOLE	D-38
MANHOLE FRAMING CONCRETE MANHOLE	D-39
MANHOLE FRAMING CONCRETE MANHOLE	D-40
MANHOLE FRAMING CONCRETE MANHOLE	D-41
MANHOLE FRAMING CONCRETE MANHOLE	D-42
MANHOLE FRAMING CONCRETE MANHOLE	D-43
MANHOLE FRAMING CONCRETE MANHOLE	D-44
MANHOLE FRAMING CONCRETE MANHOLE	D-45
MANHOLE FRAMING CONCRETE MANHOLE	D-46
MANHOLE FRAMING CONCRETE MANHOLE	D-47
MANHOLE FRAMING CONCRETE MANHOLE	D-48
MANHOLE FRAMING CONCRETE MANHOLE	D-49
MANHOLE FRAMING CONCRETE MANHOLE	D-50
MANHOLE FRAMING CONCRETE MANHOLE	D-51
MANHOLE FRAMING CONCRETE MANHOLE	D-52
MANHOLE FRAMING CONCRETE MANHOLE	D-53
MANHOLE FRAMING CONCRETE MANHOLE	D-54
MANHOLE FRAMING CONCRETE MANHOLE	D-55
MANHOLE FRAMING CONCRETE MANHOLE	D-56
MANHOLE FRAMING CONCRETE MANHOLE	D-57
MANHOLE FRAMING CONCRETE MANHOLE	D-58
MANHOLE FRAMING CONCRETE MANHOLE	D-59
MANHOLE FRAMING CONCRETE MANHOLE	D-60
MANHOLE FRAMING CONCRETE MANHOLE	D-61
MANHOLE FRAMING CONCRETE MANHOLE	D-62
MANHOLE FRAMING CONCRETE MANHOLE	D-63
MANHOLE FRAMING CONCRETE MANHOLE	D-64
MANHOLE FRAMING CONCRETE MANHOLE	D-65
MANHOLE FRAMING CONCRETE MANHOLE	D-66
MANHOLE FRAMING CONCRETE MANHOLE	D-67
MANHOLE FRAMING CONCRETE MANHOLE	D-68
MANHOLE FRAMING CONCRETE MANHOLE	D-69
MANHOLE FRAMING CONCRETE MANHOLE	D-70
MANHOLE FRAMING CONCRETE MANHOLE	D-71
MANHOLE FRAMING CONCRETE MANHOLE	D-72
MANHOLE FRAMING CONCRETE MANHOLE	D-73
MANHOLE FRAMING CONCRETE MANHOLE	D-74
MANHOLE FRAMING CONCRETE MANHOLE	D-75
MANHOLE FRAMING CONCRETE MANHOLE	D-76
MANHOLE FRAMING CONCRETE MANHOLE	D-77
MANHOLE FRAMING CONCRETE MANHOLE	D-78
MANHOLE FRAMING CONCRETE MANHOLE	D-79
MANHOLE FRAMING CONCRETE MANHOLE	D-80
MANHOLE FRAMING CONCRETE MANHOLE	D-81
MANHOLE FRAMING CONCRETE MANHOLE	D-82
MANHOLE FRAMING CONCRETE MANHOLE	D-83
MANHOLE FRAMING CONCRETE MANHOLE	D-84
MANHOLE FRAMING CONCRETE MANHOLE	D-85
MANHOLE FRAMING CONCRETE MANHOLE	D-86
MANHOLE FRAMING CONCRETE MANHOLE	D-87
MANHOLE FRAMING CONCRETE MANHOLE	D-88
MANHOLE FRAMING CONCRETE MANHOLE	D-89
MANHOLE FRAMING CONCRETE MANHOLE	D-90
MANHOLE FRAMING CONCRETE MANHOLE	D-91
MANHOLE FRAMING CONCRETE MANHOLE	D-92
MANHOLE FRAMING CONCRETE MANHOLE	D-93
MANHOLE FRAMING CONCRETE MANHOLE	D-94
MANHOLE FRAMING CONCRETE MANHOLE	D-95
MANHOLE FRAMING CONCRETE MANHOLE	D-96
MANHOLE FRAMING CONCRETE MANHOLE	D-97
MANHOLE FRAMING CONCRETE MANHOLE	D-98
MANHOLE FRAMING CONCRETE MANHOLE	D-99
MANHOLE FRAMING CONCRETE MANHOLE	D-100

COUNTY OF LOS ANGELES, CALIFORNIA

THOMAS A. TIDENANSON
 DIRECTOR OF PUBLIC WORKS

CHECKED *Thomas Tidenanson* 12/22/73

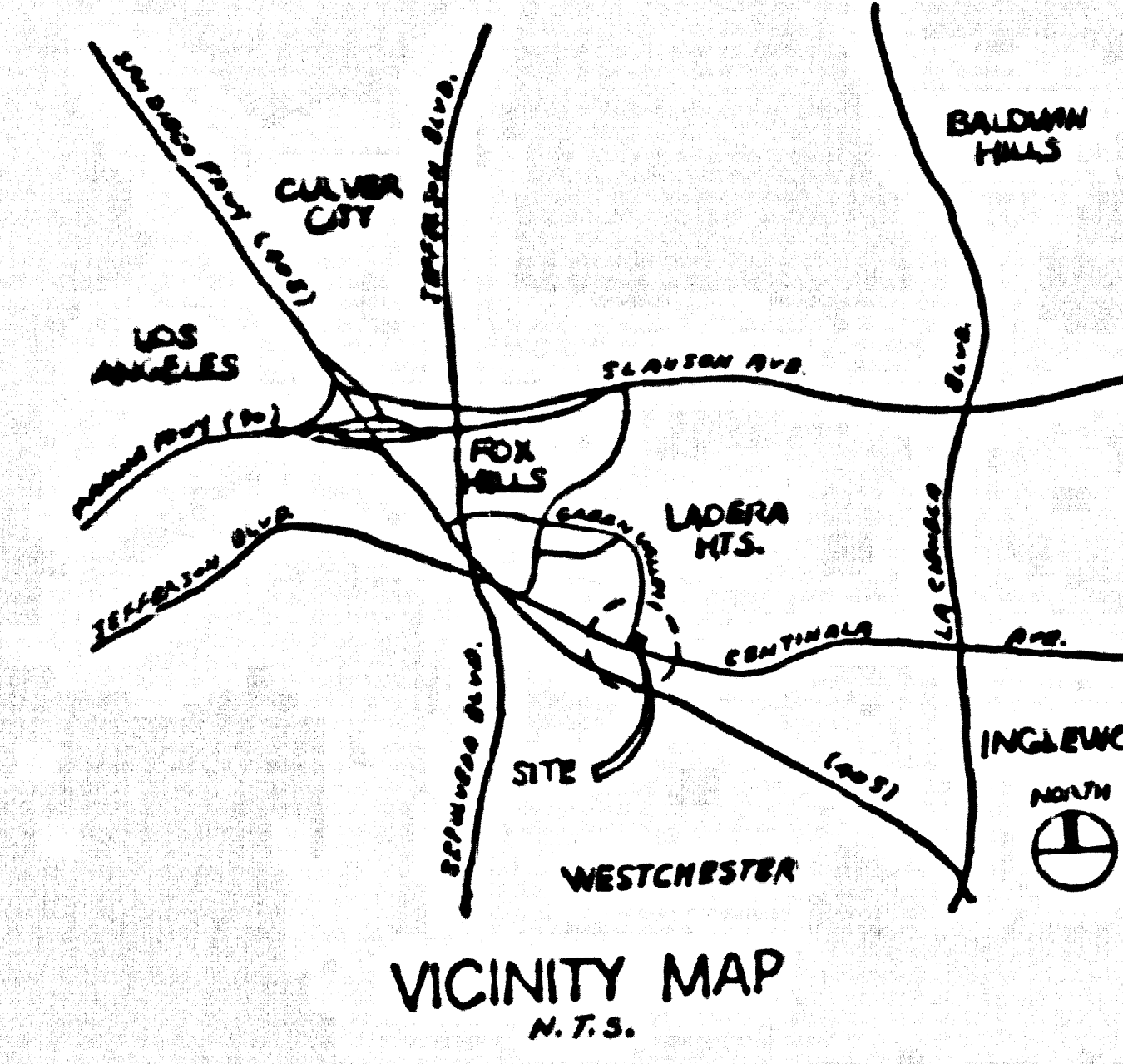
REVISION NO. 30173

LOVITA/LENHORN BLDG. DIST. 12

53699

B.M. DYER 12 ELEV. 95.022
 1/4" X 1/4" BRASS IN WELL 18" IN DIA. 2 FT. W. OR PI
 OF CENTINELA AVE. 0.65 MI. SE SEPULVEDA
 BLVD. 330 FT. SE S/J GARDEN VALLEY CIRCLE
 CULVER QUAD. 1920

B.M. AC. 6059 ELEV. 91.03
 L.A. COMPANY P.A. 263 P. 8 ELEV. 91.03 SPA. 327
 IN L&E NO. T.C. CENTINELA AVE. ON S'LY COR. OF
 EAST LINE OF FRANK A. BOLLMAN PROPERTY

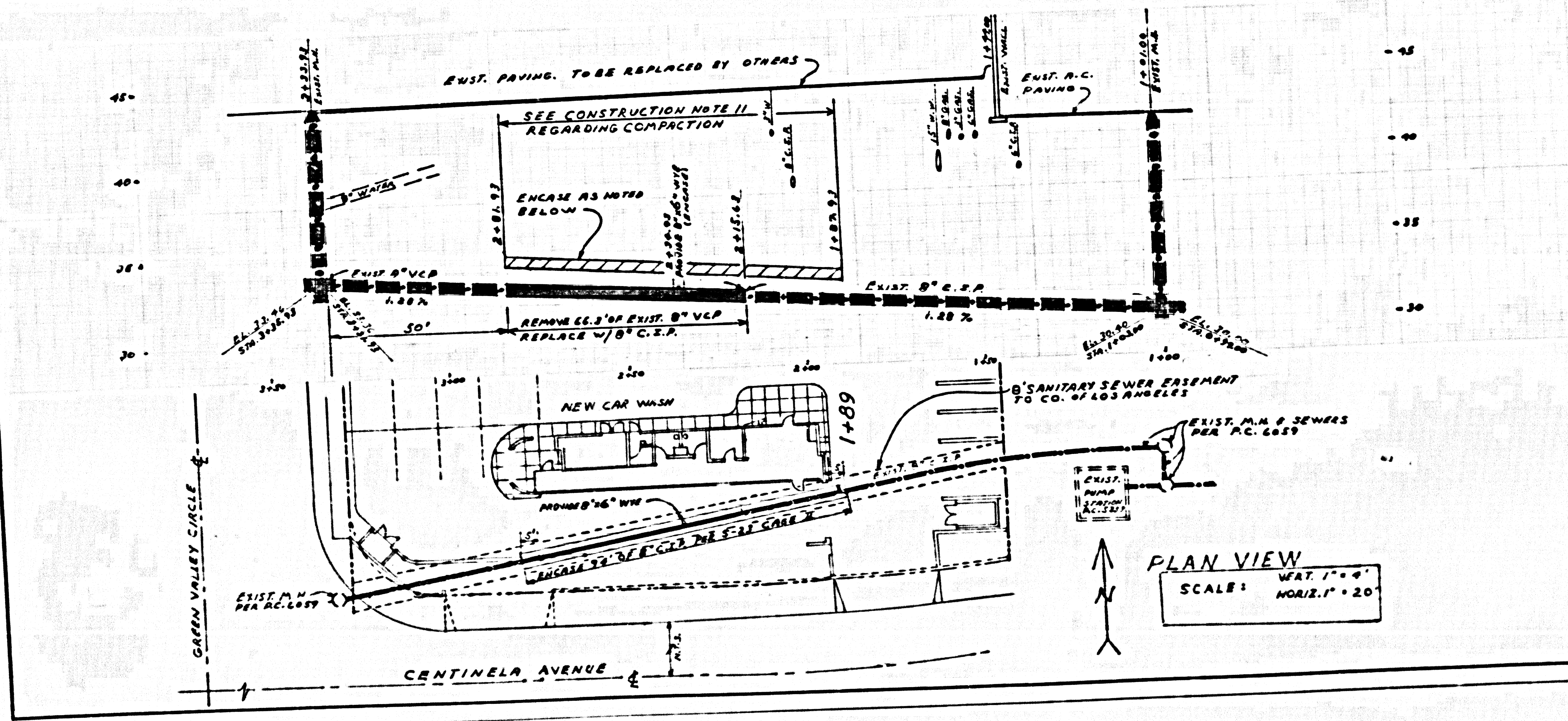


- ADDITIONAL NOTES:**
- CONTRACTOR SHALL MAINTAIN SEWER SERVICE AT ALL TIMES.
 - EXIST. SEWER FACILITIES AND ELEVATIONS ARE AS SHOWN ON P.C. 6059.
 - EXIST. UTILITIES ARE AS SHOWN ON P.C. 6059. CONTRACTOR MUST VERIFY LOCATION OF THESE AND ANY OTHER UTILITIES NOT SHOWN BEFORE DOING ANY EXCAVATION. CONTRACTOR SHALL NOTIFY DIG-ALERT BEFORE ANY EXCAVATION.

- GENERAL NOTES:**
- A SEWER CONSTRUCTION PERMIT SHALL BE OBTAINED AND A FIVE DAY PRE-CONSTRUCTION INSPECTION AND RECORD PLANS TO THE DEPARTMENT OF PUBLIC WORKS AT THE COUNTY OF LOS ANGELES, 150 SOUTH FLORENCE ALIQUARD AT 11:00 AM, PRIOR TO STARTING WORK UNDER THIS CONTRACT. COPIES OF ALL OTHER REQUIRED PERMITS AS REQUIRED BY LOCAL ORDINANCES, ETC. MUST BE FILED WITH THE PERMIT APPLICATION.
 - PRIOR TO ISSUANCE OF ANY PERMIT, THE CONTRACTOR SHALL FILE A PERMIT FOR EXCAVATIONS AND TRENCHES FROM THE STATE OF CALIFORNIA. DEPARTMENT OF PUBLIC WORKS SHALL VERIFY AND CERTIFICATE OF WORKER'S COMPENSATION INSURANCE WITH THE DEPARTMENT OF PUBLIC WORKS. WORKERS COMPENSATION INSURANCE SHALL BE OBTAINED BY THE CONTRACTOR PRIOR TO CANCELLATION OF PERMIT.
 - IF WORK IS TO BE DONE IN A STATE HIGHWAY A PERMIT MUST BE OBTAINED FROM THE STATE OF CALIFORNIA DIVISION OF HIGHWAYS, 150 SOUTH BRIDGE STREET, LOS ANGELES, CALIFORNIA.
 - WHEN WORK IS WITHIN A CONTRACT CITY, THE CONTRACTOR MUST CONTACT THE DIRECTOR OF PUBLIC WORKS OF THAT CITY TO DETERMINE THE LOCATION TO SET THE INSPECTION PITS.
 - THE CONTRACTOR SHALL CONTACT THE DISTRICT OFFICE LISTED ON THE APPLICATION FOR CONSTRUCTION PERMIT TO DETERMINE AN ACCEPTABLE CONSTRUCTION START DATE AND SHALL NOTIFY THE CONSTRUCTION DIVISION BY TELEPHONE AT 800-319 AT LEAST TWENTY-FOUR HOURS BEFORE STARTING ANY WORK UNDER THIS CONTRACT.
 - APPROVAL OF THIS PLAN BY THE COUNTY OF LOS ANGELES DOES NOT CONSTITUTE A REPRESENTATION OR WARRANTY BY THE COUNTY OF THE ACCURACY OF THE LOCATION OF OR THE EXISTENCE OR NON-EXISTENCE OF ANY UNDERGROUND UTILITY LINE OR STRUCTURE WITHIN THE LIMITS OF THIS PROJECT. THIS NOTE APPLIES TO ALL PAGES.
 - ALL WORK SHALL BE IN ACCORDANCE WITH THE STANDARD SPECIFICATIONS FOR PUBLIC WORKS CONSTRUCTION, 1988 EDITION, INCLUDING SUPPLEMENTS AND THE SPECIAL PROVISIONS FOR THE CONSTRUCTION OF SANITARY SEWERS, DATED JULY 31, 1988, AND SHALL BE PROSECUTED ONLY IN THE PRESENCE OF THE DEPARTMENT OF PUBLIC WORKS PERSONNEL.
 - THE CONTRACTOR'S ATTENTION IS DIRECTED TO SECTION 200-1.1 OF THE STANDARD SPECIFICATIONS FOR PUBLIC WORKS CONSTRUCTION, WHICH PROVIDES THAT ALL WORK SHALL BE DONE IN ACCORDANCE WITH THE STANDARD SPECIFICATIONS FOR PUBLIC WORKS CONSTRUCTION, AS SHOWN ON LOS ANGELES DEPARTMENT OF PUBLIC WORKS STANDARD 9-2.
 - ALL TRENCHES ARE TO BE 18" ABOVE U.S.C. & G.S. SEA LEVEL, DATUM OF 1988.
 - NO REVISIONS SHALL BE MADE IN THESE PLANS WITHOUT THE APPROVAL OF THE DIRECTOR OF PUBLIC WORKS.
 - NO REPRESENTATIVE OF THE DEPARTMENT OF PUBLIC WORKS SHALL SURVEY OR LAY OUT ANY PORTION OF THE WORK.
 - GRADES TO WHICH THIS IMPROVEMENT IS TO BE CONSTRUCTED ARE SHOWN ON THIS PLAN AND PROFILE GRADE POINTS FOR TOP OF CURBS, CENTERLINE OF STREETS OR CENTERLINE OF ALLIANCE LINES, LOCATED BY CIRCLES ON PROFILES AT ALL POINTS BY THEIR CORRESPONDING POINTS. THE GRADE SHALL BE ESTABLISHED SO AS TO CONFORM TO A STRAIGHT LINE GRADE BETWEEN SAID GRADE POINTS.
 - THE AMBER SIGNAGE SHALL FURNISH THE NECESSARY INFORMATION TO THE DEPARTMENT OF PUBLIC WORKS WITH GRADE SHEETS AND STATIONING FOR ALL HOUSE LATERALS AND "D" OR "T" CHANGES AND SHALL PROVIDE STAKES FOR THEM AT THE HOUSE LOCATIONS AS SHOWN ON PLANS. ALL HOUSE LATERALS SHALL BE CONSTRUCTED AS A STRAIGHT LINE, UNLESS OTHERWISE NOTED BY THE ENGINEER. ALL CHANGES TO THE PLANS, HOUSE LATERAL PROFILES OR STAKES SHALL BE MADE AT THE HOUSE LOCATIONS BY THE CONTRACTOR. ANY CHANGES TO THE PLANS SHALL BE REQUESTED IN WRITING BY THE CIVIL ENGINEER.
 - THE CIVIL ENGINEER SHALL FURNISH THE HOUSE LATERAL DEPTH AT THE PROPERTY LINE BELOW THE TOP CURB ELEVATION FOR EACH HOUSE LATERAL ON THE GRADE SHEET.

- CONSTRUCTION NOTES:**
- PROVIDE SURVEY STAKES ON THE PROPERTY LINE OR PROPERTY LINES PRODUCED AT RIGHT ANGLES TO THE SEWER LINE AT THE CENTER OF EACH MANHOLE.
 - WITHIN CLAY PIPE JOINTS SHALL BE FIVE (5) " OR "6" PER STANDARD SPECIFICATIONS SECTION 200-1.1.
 - IF A POWER POLE IS WITHIN THREE FEET OF THE SEWER, THE SEWER SHALL BE ENCASED PER STANDARD PLAN 9-83 CASE 2 TWO FEET ON EACH SIDE FROM THE POINT OF INTERFERENCE.
 - ALL JOINTS IN THREE CAST IRON PIPE AND WITHIN CLAY PIPE SHALL BE MADE WITH A RUBBER SLEEV JOINT TYPE "F" WITH BUSHING IF NECESSARY PER STANDARD SPECIFICATIONS SECTION 200-1.1.
 - HOUSE LATERALS TO BE CONSTRUCTED WITH JOINTS AT THE PROPERTY LINE & FIRST BELOW CURB GRADE EXCEPT AS NOTED.
 - IF ONE OF THE MANHOLES MAY BE USED FOR CONNECTIONS TO MANHOLE BRANCH EXCEPT AS NOTED.
 - IF DURING THE COURSE OF CONSTRUCTION, IT IS DETERMINED THAT THERE IS LESS THAN FOUR FEET OF COVER OVER THE TOP OF A MANHOLE OR HOUSE LATERAL, OR IF THE COVER IS NOT INDICATED ON THE PLANS, THE PIPE SHALL BE ENCASED PER STANDARD PLAN 9-83 CASE 4 UNLESS OTHERWISE APPROVED BY THE DIRECTOR OF PUBLIC WORKS.
 - ALL STRUCTURES SHALL BE EITHER BRICK OR CONCRETE PER STANDARD PLAN 9-83 OR PERMITS CONCRETE SEWER MANHOLES PER STANDARD PLAN 9-83 OR PERMITS CONCRETE MANHOLES PER STANDARD PLAN 9-83 EXCEPT AS NOTED.
 - REINFORCE ALL TRENCHES WITHIN PRIVATE AREAS TO MEET LOS ANGELES COUNTY PUBLIC WORKS OR CALIFORNIA STATE HIGHWAY REQUIREMENTS IN ACCORDANCE WITH THE PERMITS.
 - FULL COMPLIANCE WITH SECTION 200-1.1 OF THE STANDARD SPECIFICATIONS SHALL BE REQUIRED FOR BACKFILL IN STREETS, CENTERLINE OF BACKLAYS, CENTERLINE OF STREETS AND SIDEWALKS BY QUALIFIED CIVIL ENGINEER. THIS SHALL BE CERTIFIED BY THE ENGINEER PRIOR TO THE ISSUANCE OF A CERTIFICATE OF PARTIAL OCCUPANCY.
 - IF BACKFILL IS APPLIED OUTSIDE OF STREET RIGHT OF WAY SHALL BE COMPACTED TO 90% OF MAXIMUM DENSITY AS DETERMINED BY ASTM SOIL COMPACTION TEST D 1557 IN 6" LAYERS. UNLESS OTHERWISE SPECIFIED, THIS SHALL BE CERTIFIED BY A QUALIFIED CIVIL ENGINEER. THIS CERTIFICATION SHALL BE SUBMITTED TO THE CONSTRUCTION DIVISION OF THE DEPARTMENT OF PUBLIC WORKS PRIOR TO ACCEPTANCE OF THE WORK BY THE COUNTY OF LOS ANGELES.
 - MANHOLE TOPS IN UNIMPROVED AREAS OF 18" TO BE 6" INCHES ABOVE FINISHED GRADE.
 - SEWERS TO BE TESTED FOR LEAKAGE PER SECTION 200-1.1 OF THE STANDARD SPECIFICATIONS AND SPECIAL PROVISIONS.

P.C. 11269 PAGE 1 46
 REVIEWED BY *Sally B. Bell* 12/22/73



PLAN VIEW
 SCALE: VERT. 1" = 4'
 HORIZ. 1" = 20'

REVISED 12-20-73
 REVISED 12-1-73