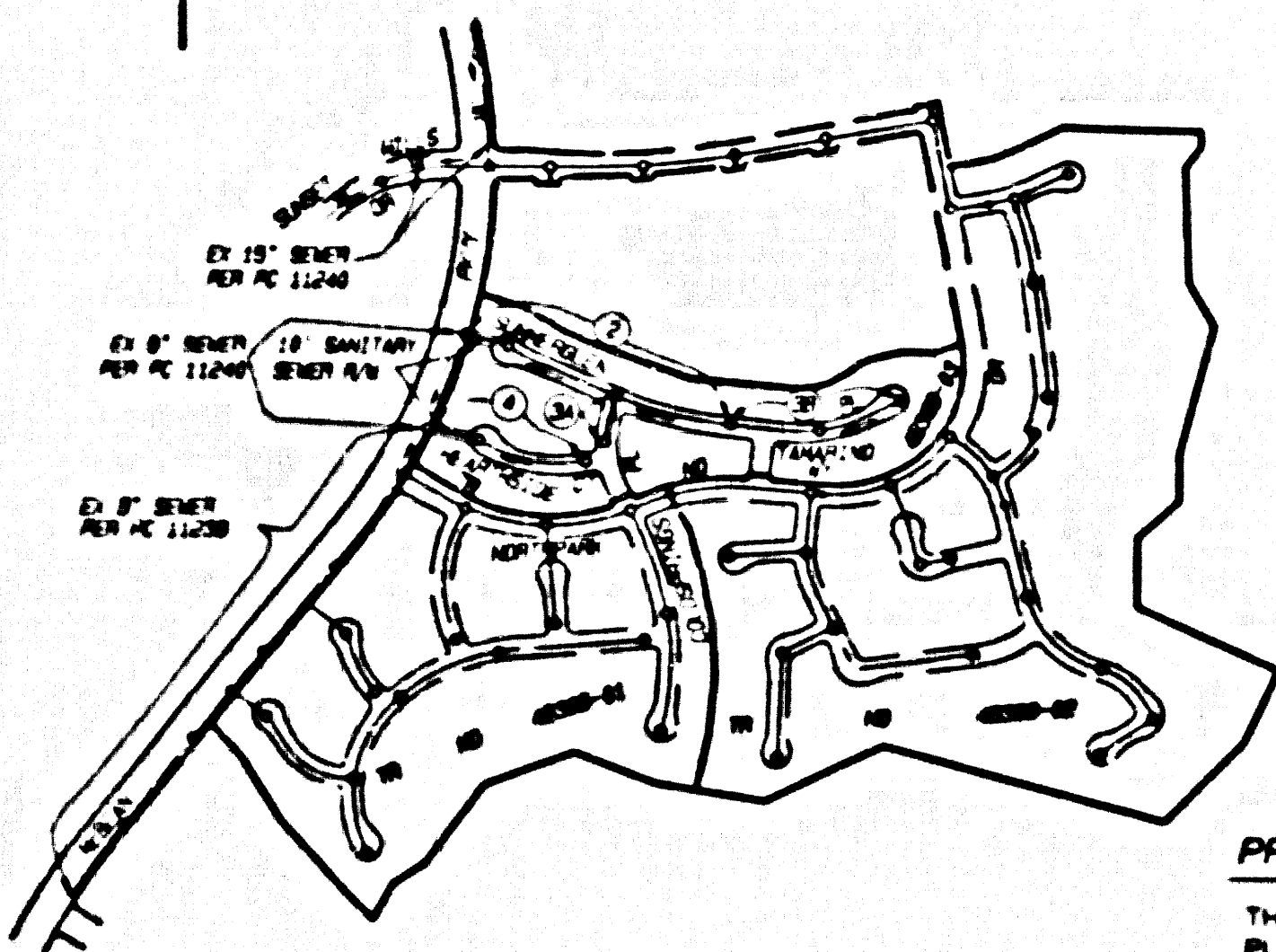


B.M. 2967 ELEV. 1180.581
 100M TAG E OR BOULET CANYON RD 3 FT.
 4' BCR @ COR BOULET CANYON RD E.
 ESPUELLA DR. 83 FT. N. & 45 FT. E. CAL INT.
 NEWHALL QUAD. 1983



INDEX MAP
 SCALE 1" = 600'
 P.C. 11271 TRACT NO. 46389-03
 THOMAS GUIDE PG. NO. 4480-FB

NOTE: NUMBERS IN CIRCLES INDICATE PAGE NUMBERS

DOUBLE SCALE

GENERAL NOTES:

- A SEWER CONSTRUCTION PERMIT SHALL BE OBTAINED AND A FEE PAID FOR CONSTRUCTION INSPECTION AND RECORD PLANS TO THE DEPARTMENT OF PUBLIC WORKS AT THE COUNTY OF LOS ANGELES, 100 SOUTH MAIN STREET, 5TH FLOOR, LOS ANGELES, CALIF. 90012.
- BEFORE BREAKING INTO OR CONSTRUCTION ON A COUNTY SANITATION DISTRICT SEWER AND PRIOR TO FINAL ACCEPTANCE OF THE PROJECT, A SANITATION DISTRICT INSPECTOR SHALL BE NOTIFIED BY PHONE AT (805) 266-6643 SO THAT REQUIRED INSPECTIONS CAN BE MADE.
- NO CONNECTION FOR THE DISPOSAL OF INDUSTRIAL WASTES SHALL BE MADE TO SEWERS SHOWN ON THESE DRAWINGS UNTIL A PERMIT FOR INDUSTRIAL WASTEWATER DISCHARGE HAS BEEN ISSUED BY THE SANITATION DISTRICTS FOR SAID CONNECTION.
- BEFORE BREAKING INTO OR CONSTRUCTION ON A COUNTY SANITATION DISTRICT SEWER AND PRIOR TO FINAL ACCEPTANCE OF THE PROJECT, A SANITATION DISTRICT INSPECTOR SHALL BE NOTIFIED BY PHONE AT (805) 266-6643 SO THAT REQUIRED INSPECTIONS CAN BE MADE.
- LOTS 55 THROUGH 59 ARE RESTRICTED TO NO CONSTRUCTION OF RESIDENTIAL BUILDINGS & WILL NOT BE SERVED BY THIS SEWER.

PRIVATE ENGINEERS NOTICE TO CONTRACTORS:

THE EXISTENCE AND LOCATION OF ANY UNDERGROUND UTILITY PIPES OR STRUCTURES SHOWN ON THESE PLANS IS OBTAINED BY A SEARCH OF AVAILABLE RECORDS TO THE BEST OF OUR KNOWLEDGE. THERE ARE NO EXISTING UTILITIES EXCEPT AS SHOWN ON THIS MAP. THE CONTRACTOR IS REQUIRED TO TAKE PRECAUTIONARY MEASURES TO PROTECT THE UTILITY LINES SHOWN AND ANY OTHER LINES NOT OF RECORD OR NOT SHOWN ON THIS PLAN. PRIOR TO EXCAVATION, THE CONTRACTOR SHALL CALL THE TOLL FREE 1-800-422-4133 TO VERIFY THE UNDERGROUND LOCATION OF GAS AND TELEPHONE LINES. THE CONTRACTOR SHALL ALSO CALL MR. RAY CUMMINGS OF GENERAL TELEPHONE COMPANY AT 1-800-948-4871 SO THAT THEY CAN MARK THE LOCATION OF UNDERGROUND TELEPHONE LINES.

Jose Salinas
 REGISTERED CIVIL ENGINEER NO. 42890
 6-28-94 DATE

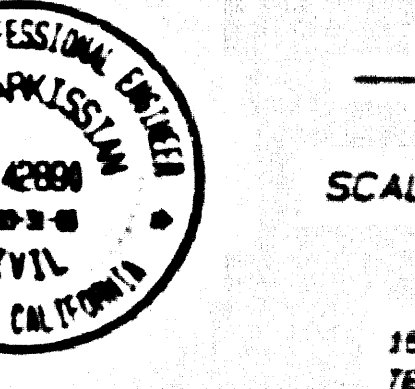
ISSUE NO. H.L. CONNECTION PERMITS UNTIL OUTLET SEWER P.C. 11230 AND 11240 ARE ACCEPTED FOR PUBLIC USE BY THE COUNTY OF LOS ANGELES

PROFILE, ALIGNMENT AND GRADE OF
SANITARY SEWERS
 TO BE CONSTRUCTED IN

TRACT No. 46389-03

PRIVATE CONTRACT NO. 11271
 INDEX 1294
 2 SHEETS; 4 PAGES

SCALE: VERT. 1" = 8'
 HORIZ. 1" = 40'
 JUNE 1994
 PREPARED IN THE OFFICES OF
 SIKAND ENGINEERING
 15230 BURBANK BLVD., VAN NUYS, CA 91411-3008
 TEL: (818) 787-8908



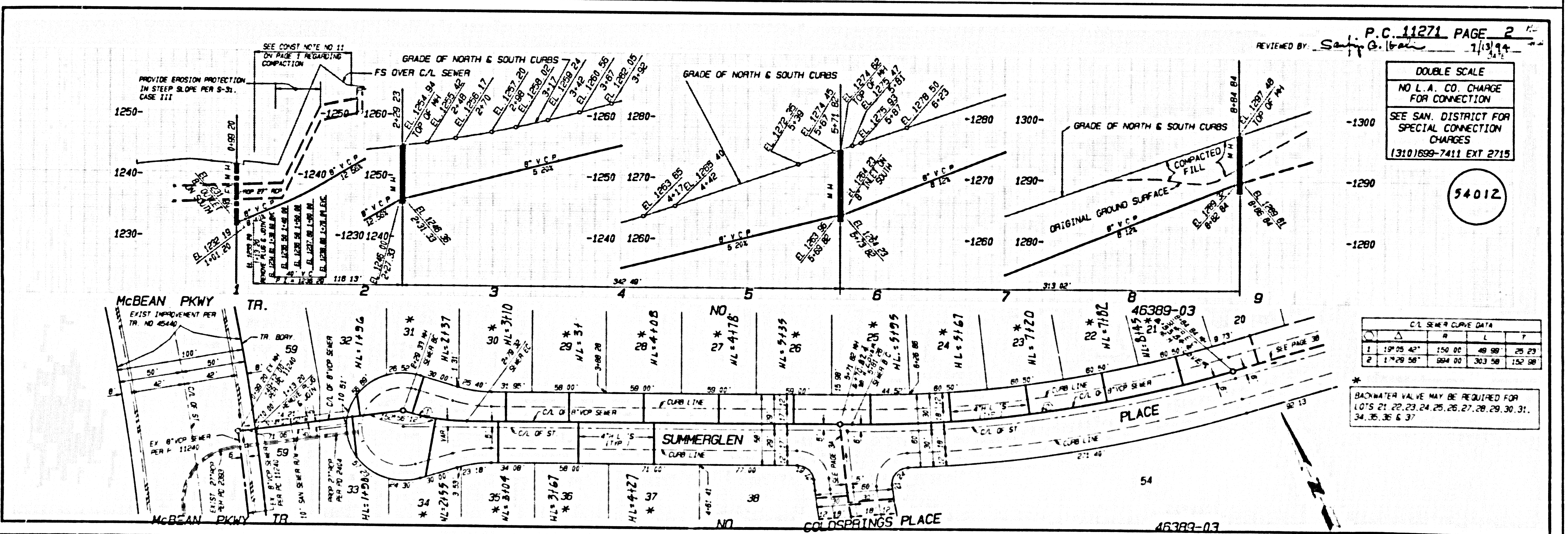
BY: *Jose Salinas*
 REGISTERED CIVIL ENGINEER
 REG. C.E. NO. 42890

THE FOLLOWING LATEST REVISED STANDARD PLANS ON FILE IN THE OFFICE OF THE DEPARTMENT OF PUBLIC WORKS SHALL APPLY IN THE CONSTRUCTION OF THIS PROJECT:

STANDARD PLAN 9-10-1	0-1 1899-B LACORN STD. 1899 ED. 1
STANDARD PLAN 9-10-2	0-2 1899-B LACORN STD. 1899 ED. 1
STANDARD PLAN 9-10-3	0-3 1899-B LACORN STD. 1899 ED. 1
STANDARD PLAN 9-10-4	0-4 1899-B LACORN STD. 1899 ED. 1
STANDARD PLAN 9-10-5	0-5 1899-B LACORN STD. 1899 ED. 1
STANDARD PLAN 9-10-6	0-6 1899-B LACORN STD. 1899 ED. 1
STANDARD PLAN 9-10-7	0-7 1899-B LACORN STD. 1899 ED. 1
STANDARD PLAN 9-10-8	0-8 1899-B LACORN STD. 1899 ED. 1
STANDARD PLAN 9-10-9	0-9 1899-B LACORN STD. 1899 ED. 1
STANDARD PLAN 9-10-10	0-10 1899-B LACORN STD. 1899 ED. 1
STANDARD PLAN 9-10-11	0-11 1899-B LACORN STD. 1899 ED. 1
STANDARD PLAN 9-10-12	0-12 1899-B LACORN STD. 1899 ED. 1
STANDARD PLAN 9-10-13	0-13 1899-B LACORN STD. 1899 ED. 1
STANDARD PLAN 9-10-14	0-14 1899-B LACORN STD. 1899 ED. 1
STANDARD PLAN 9-10-15	0-15 1899-B LACORN STD. 1899 ED. 1
STANDARD PLAN 9-10-16	0-16 1899-B LACORN STD. 1899 ED. 1
STANDARD PLAN 9-10-17	0-17 1899-B LACORN STD. 1899 ED. 1
STANDARD PLAN 9-10-18	0-18 1899-B LACORN STD. 1899 ED. 1
STANDARD PLAN 9-10-19	0-19 1899-B LACORN STD. 1899 ED. 1
STANDARD PLAN 9-10-20	0-20 1899-B LACORN STD. 1899 ED. 1
STANDARD PLAN 9-10-21	0-21 1899-B LACORN STD. 1899 ED. 1
STANDARD PLAN 9-10-22	0-22 1899-B LACORN STD. 1899 ED. 1
STANDARD PLAN 9-10-23	0-23 1899-B LACORN STD. 1899 ED. 1
STANDARD PLAN 9-10-24	0-24 1899-B LACORN STD. 1899 ED. 1
STANDARD PLAN 9-10-25	0-25 1899-B LACORN STD. 1899 ED. 1
STANDARD PLAN 9-10-26	0-26 1899-B LACORN STD. 1899 ED. 1
STANDARD PLAN 9-10-27	0-27 1899-B LACORN STD. 1899 ED. 1
STANDARD PLAN 9-10-28	0-28 1899-B LACORN STD. 1899 ED. 1
STANDARD PLAN 9-10-29	0-29 1899-B LACORN STD. 1899 ED. 1
STANDARD PLAN 9-10-30	0-30 1899-B LACORN STD. 1899 ED. 1
STANDARD PLAN 9-10-31	0-31 1899-B LACORN STD. 1899 ED. 1
STANDARD PLAN 9-10-32	0-32 1899-B LACORN STD. 1899 ED. 1
STANDARD PLAN 9-10-33	0-33 1899-B LACORN STD. 1899 ED. 1
STANDARD PLAN 9-10-34	0-34 1899-B LACORN STD. 1899 ED. 1
STANDARD PLAN 9-10-35	0-35 1899-B LACORN STD. 1899 ED. 1
STANDARD PLAN 9-10-36	0-36 1899-B LACORN STD. 1899 ED. 1
STANDARD PLAN 9-10-37	0-37 1899-B LACORN STD. 1899 ED. 1
STANDARD PLAN 9-10-38	0-38 1899-B LACORN STD. 1899 ED. 1
STANDARD PLAN 9-10-39	0-39 1899-B LACORN STD. 1899 ED. 1
STANDARD PLAN 9-10-40	0-40 1899-B LACORN STD. 1899 ED. 1
STANDARD PLAN 9-10-41	0-41 1899-B LACORN STD. 1899 ED. 1
STANDARD PLAN 9-10-42	0-42 1899-B LACORN STD. 1899 ED. 1
STANDARD PLAN 9-10-43	0-43 1899-B LACORN STD. 1899 ED. 1
STANDARD PLAN 9-10-44	0-44 1899-B LACORN STD. 1899 ED. 1
STANDARD PLAN 9-10-45	0-45 1899-B LACORN STD. 1899 ED. 1
STANDARD PLAN 9-10-46	0-46 1899-B LACORN STD. 1899 ED. 1
STANDARD PLAN 9-10-47	0-47 1899-B LACORN STD. 1899 ED. 1
STANDARD PLAN 9-10-48	0-48 1899-B LACORN STD. 1899 ED. 1
STANDARD PLAN 9-10-49	0-49 1899-B LACORN STD. 1899 ED. 1
STANDARD PLAN 9-10-50	0-50 1899-B LACORN STD. 1899 ED. 1

COUNTY OF LOS ANGELES, CALIFORNIA
 HARRY M. STONE, ACTING
 DIRECTOR OF PUBLIC WORKS
 APPROVED: *[Signature]* 7/13/94
 DECEDED: *[Signature]* 7/13/94
 REG. C.E. NO. 12416
 OFFICE ENGINEER

SANTA CLARITA VALLEY, 3.00 DIST. 8.2



REVIEWED BY: *Sanjay G. Bhat* 7/13/94
 P.C. 11271 PAGE 2

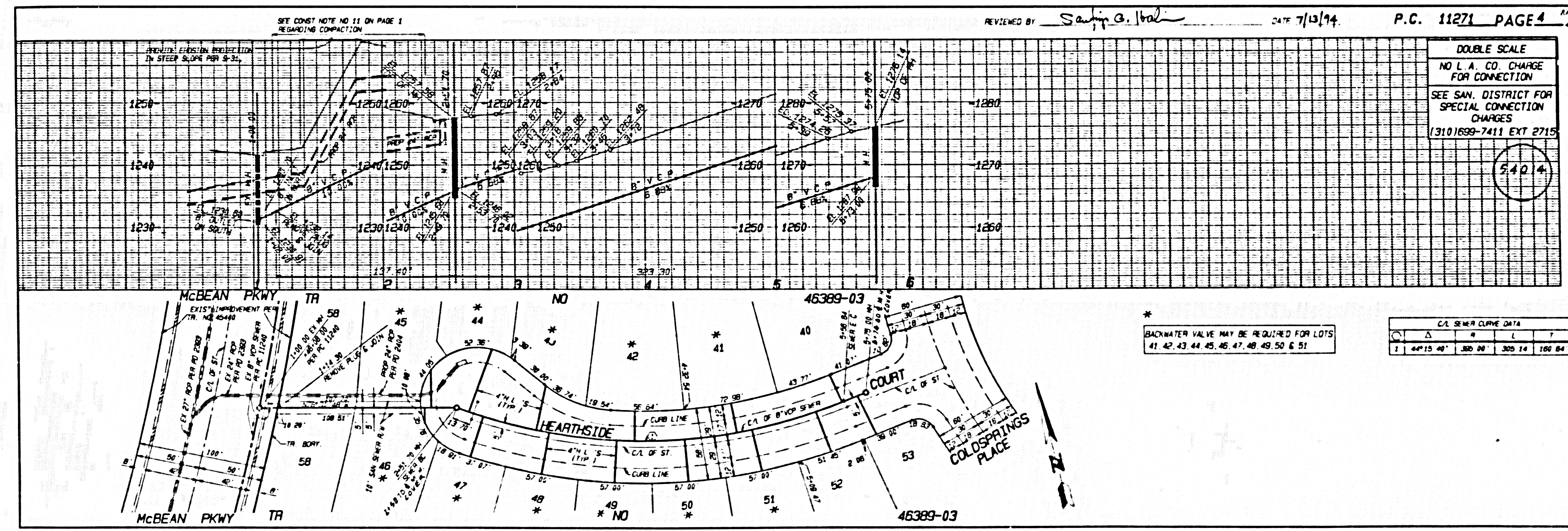
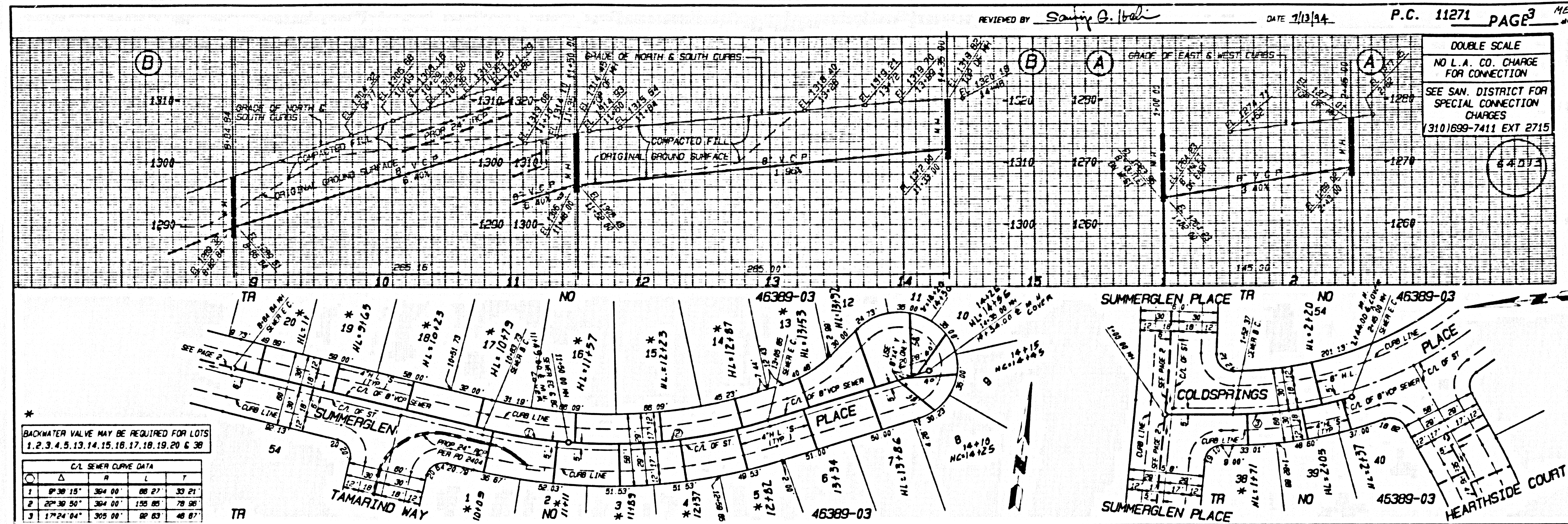
DOUBLE SCALE
 NO L.A. CO. CHARGE
 FOR CONNECTION
 SEE SAN. DISTRICT FOR
 SPECIAL CONNECTION
 CHARGES
 (310) 699-7411 EXT 2715

54012

CURVE DATA

STATION	PC	PT	PI	LC	LC	LC	LC
1	1237.50	1247.50	1250.00	48.98	25.29		
2	1247.50	1257.50	1260.00	30.35	15.28		

* BACKWATER VALVE MAY BE REQUIRED FOR
 LOTS 21, 22, 23, 24, 25, 26, 27, 28, 29, 30, 31,
 34, 35, 36 & 37



(S) 15511 09 60-08664 0M .PT