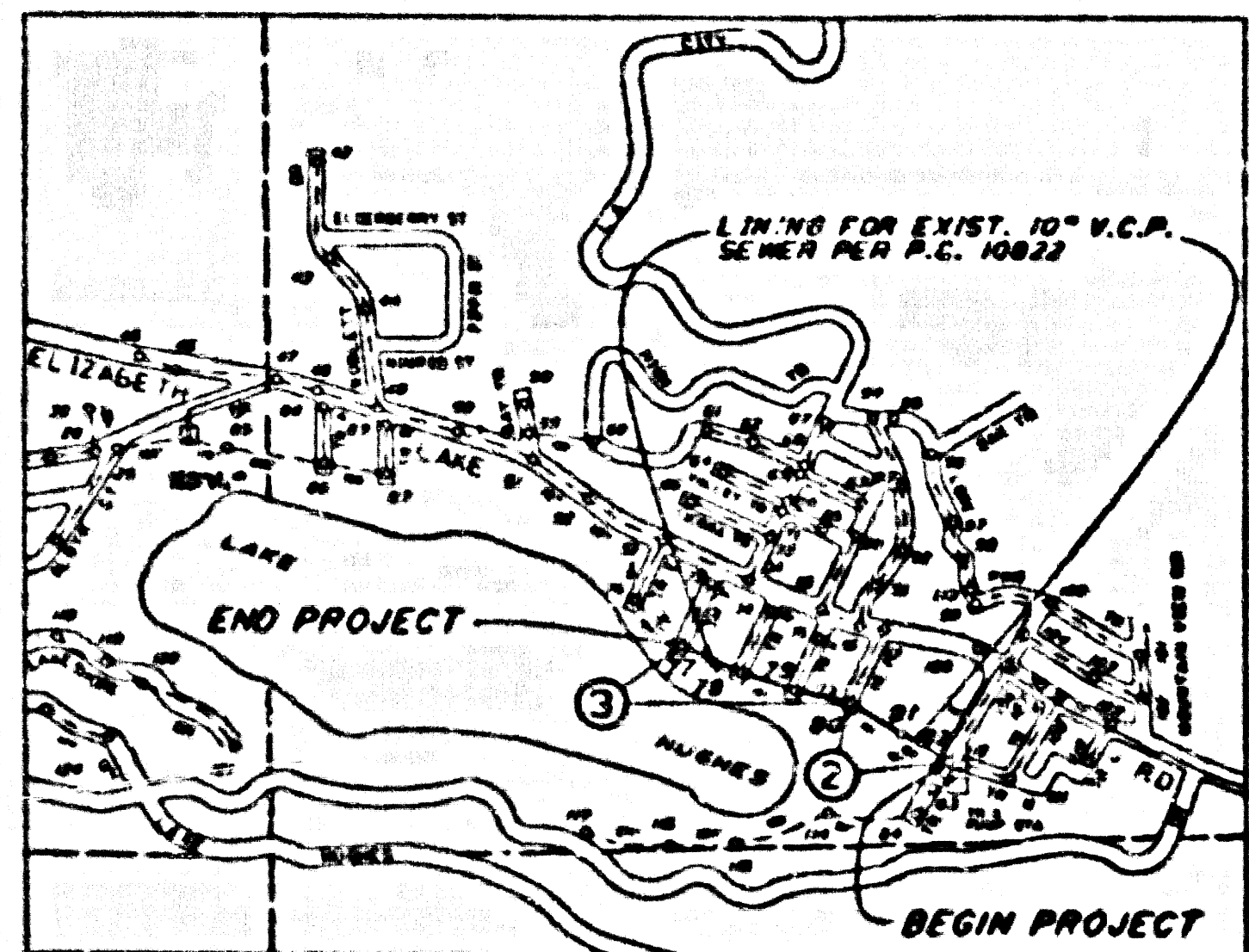
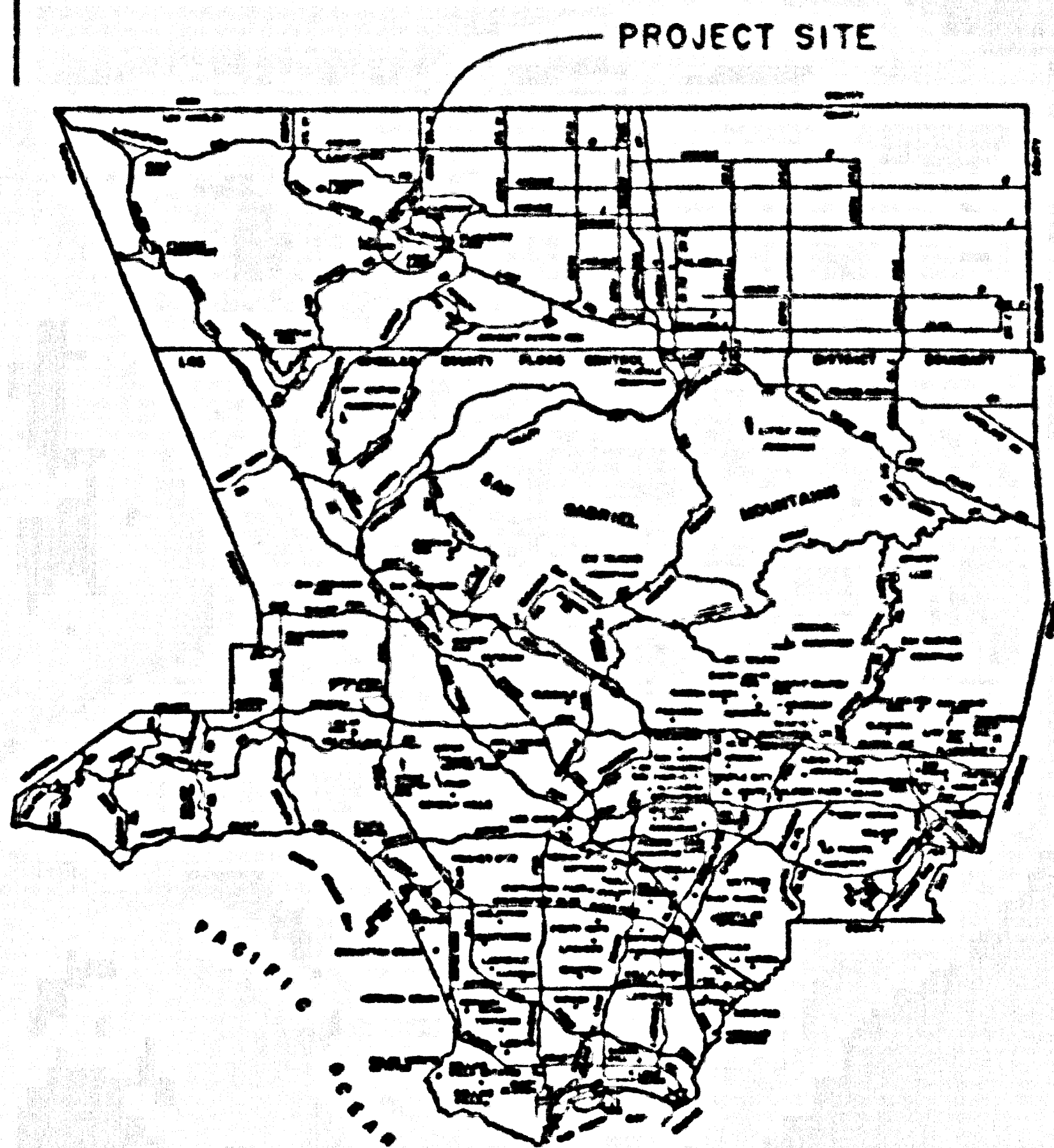


CASH CONTRACT NO. SAN PLAN 11280 TITLE

ELEVATIONS SHOWN ON THESE PLANS ARE FROM P.C. 10822 'AS-BUILT' PLANS.



NOTES:
1. NUMBERS IN CIRCLES INDICATE PAGE NUMBERS.

INDEX MAP
C.C. 11280 - LAKE HUGHES

SCALE: 1"=800'
THOMAS BROS. (OLD) PG. 157, B-6
THOMAS BROS. (NEW) PG. 4101, J-2

THE EXISTENCE AND LOCATION OF HOUSE LATERALS SHOWN ON THESE PLANS ARE OBTAINED BY A SEARCH OF AVAILABLE RECORDS FROM THE ANTELOPE VALLEY BUILDING AND SAFETY OFFICE, 325A EAST AVE. E.B. LANCASTER, CA 92333, TEL. (951) 423-4440. IT SHALL BE THE CONTRACTOR'S RESPONSIBILITY TO VERIFY THE LOCATION OF THESE AND ANY OTHER HOUSE LATERALS AND CONNECT SUCH TO THE NEW MAIN LINE SEWER.
THE CONTRACTOR SHALL MAINTAIN SERVICE AT ALL TIMES DURING THE LING OF THIS PROJECT. ADEQUATE PUMPING OPERATION AND PROPER METHODS SHALL BE USED TO CONTAIN ALL SEWAGE FLOWS. THE CONTRACTOR SHALL PROVIDE NOTIFICATION OF WORK ACTIVITIES TO ALL LOCAL USERS AND PROVIDE INTERIM SERVICES AS NECESSARY.

PRIME CONTRACTOR LICENSE REQUIRED: A OR C-42

- STANDARD PLANS:
THE FOLLOWING LATEST REVISED STANDARD PLANS ON FILE IN THE OFFICE OF LOS ANGELES COUNTY DEPARTMENT OF PUBLIC WORKS SHALL APPLY IN THE CONSTRUCTION OF THIS PROJECT.
- | | | | |
|-------------------------------------|--------|---------------------------------------|-----------|
| LEGEND | 3000-0 | STANDARD WYE OR TEE SUPPORT | 3004-0 |
| 24-INCH MANHOLE FRAME & COVER | 630-1 | PRECAST CONCRETE SEWER MANHOLE | APW 200-0 |
| 36-INCH MANHOLE FRAME & COVER | 633-1 | BRICK MANHOLE | APW 201-0 |
| | | LOCKING MANHOLE FRAME AND COVER | APW 202-0 |

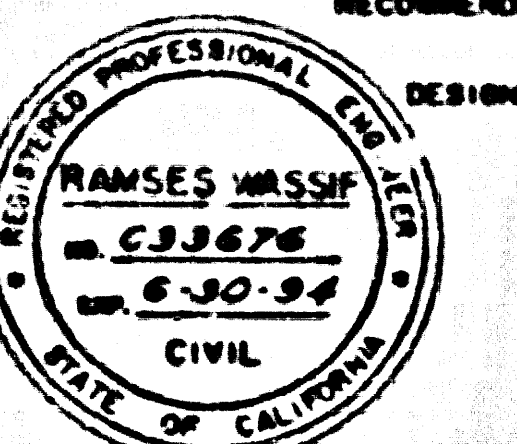
- THE UNDERGROUND UTILITY COMPANIES WITHIN THE LIMITS OF THIS PROJECT ARE AS FOLLOWS:
- | | |
|--------------------------------------|--------------------------------|
| (1.) FOREST LAKE STATE WATER CO. (M) | (5.) GENERAL TELEPHONE CO. (T) |
| (2.) DOMINIQUE WATER CORP. (W) | (6.) JONES INTERCABLE CO. |
| (3.) SOUTHERN CALIFORNIA GAS CO. (G) | (7.) CAPPS T.V. ELECTRONICS |
| (4.) DPW L. A. COUNTY (SD) | (8.) |

CASH CONTRACT NUMBER 11280
CONSOLIDATED SEWER MAINTAINANCE DISTRICT
SANITARY SEWERS
TO BE LINED IN
LAKE HUGHES
R/W S/O ELIZABETH LAKE ROAD BETWEEN TRAIL F & TRAIL K

53780

2 SHEETS: 3 PAGES
APRIL, 1994

COUNTY OF LOS ANGELES, CALIFORNIA
HARRY W. STONE, ACTING DIRECTOR OF PUBLIC WORKS
APPROVED: [Signature] 5-24-94

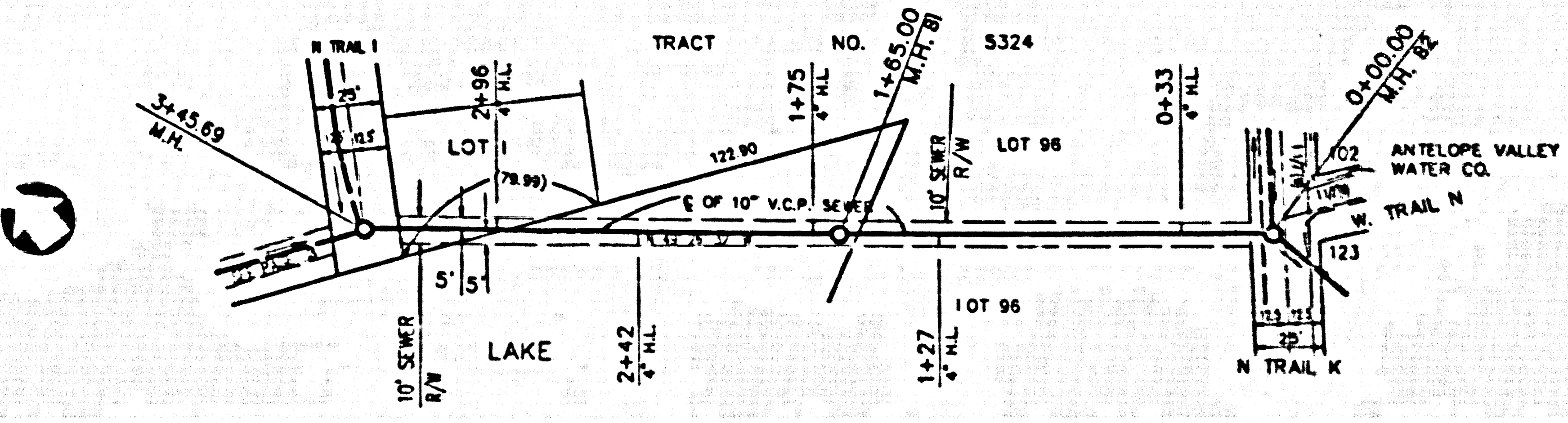
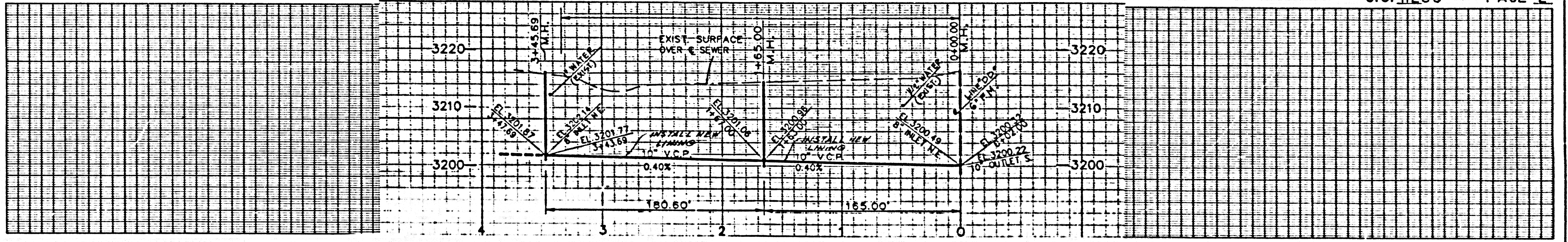


NOTES:
THE CONTRACTOR SHALL NOTIFY THE CONSTRUCTION DIVISION BY TELEPHONE (818) 456-3441 AT LEAST 5 DAYS BEFORE STARTING ANY WORK UNDER THIS CONTRACT.

ELEVATIONS ARE IN FEET ABOVE U.S.C. & G.S. SEA LEVEL DATUM OF 1929.
THIS DRAWING AND THE DATA HEREON ARE HEREBY MADE A PART OF THE SPECIFICATIONS.

LAYOUT	J. HICKOK	4-9-94	CHECKED
TRACED	J. HICKOK	4-9-94	MAINTENANCE [Signature] 5-17-94
F.S.			A.B. [Signature] 5/18/94
			BUILDING DISTRICT NO. 8

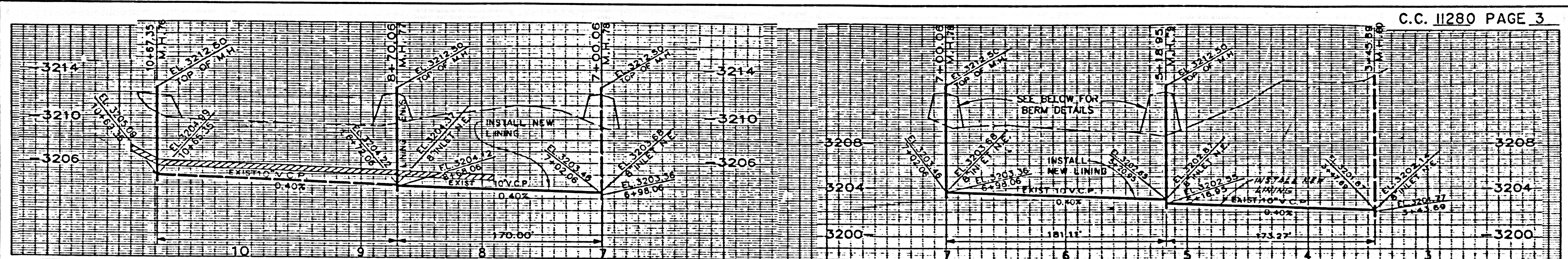
CASH CONTRACT NO. SAN PLAN 11280 TITLE



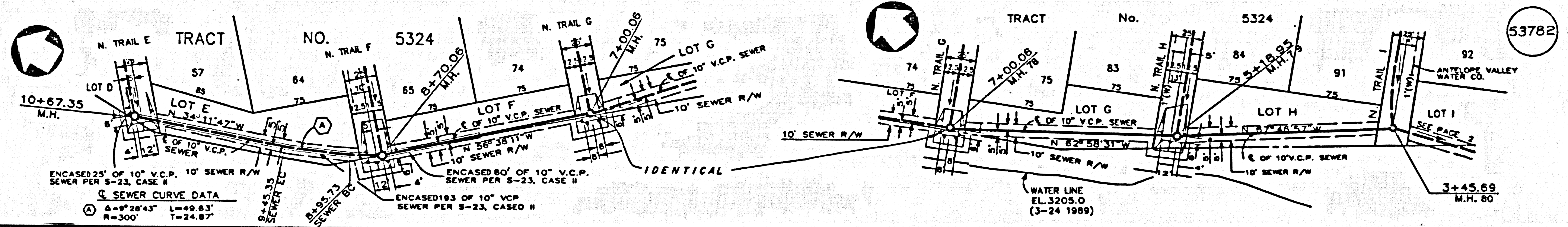
53781

PLAN
SCALE: 1"=40'

CADD PART NO.

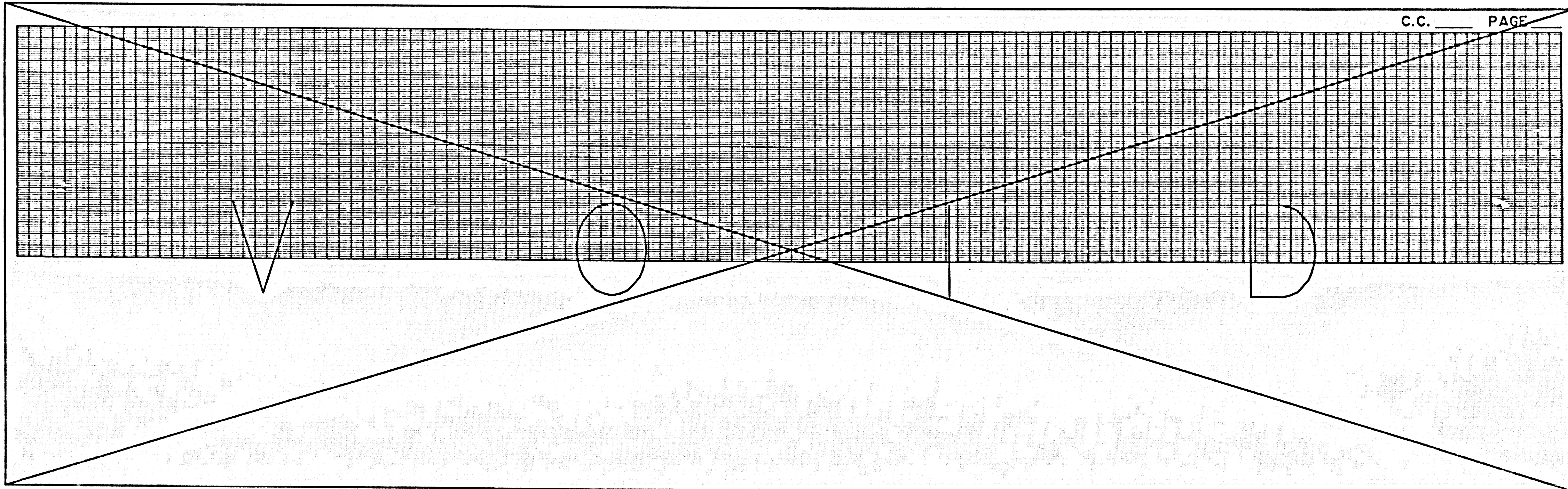


C.C. 11280 PAGE 3



SEWER CURVE DATA
 A=9°28'43" L=49.83'
 R=300' T=24.87'

CADD PART NO.



C.C. PAGE