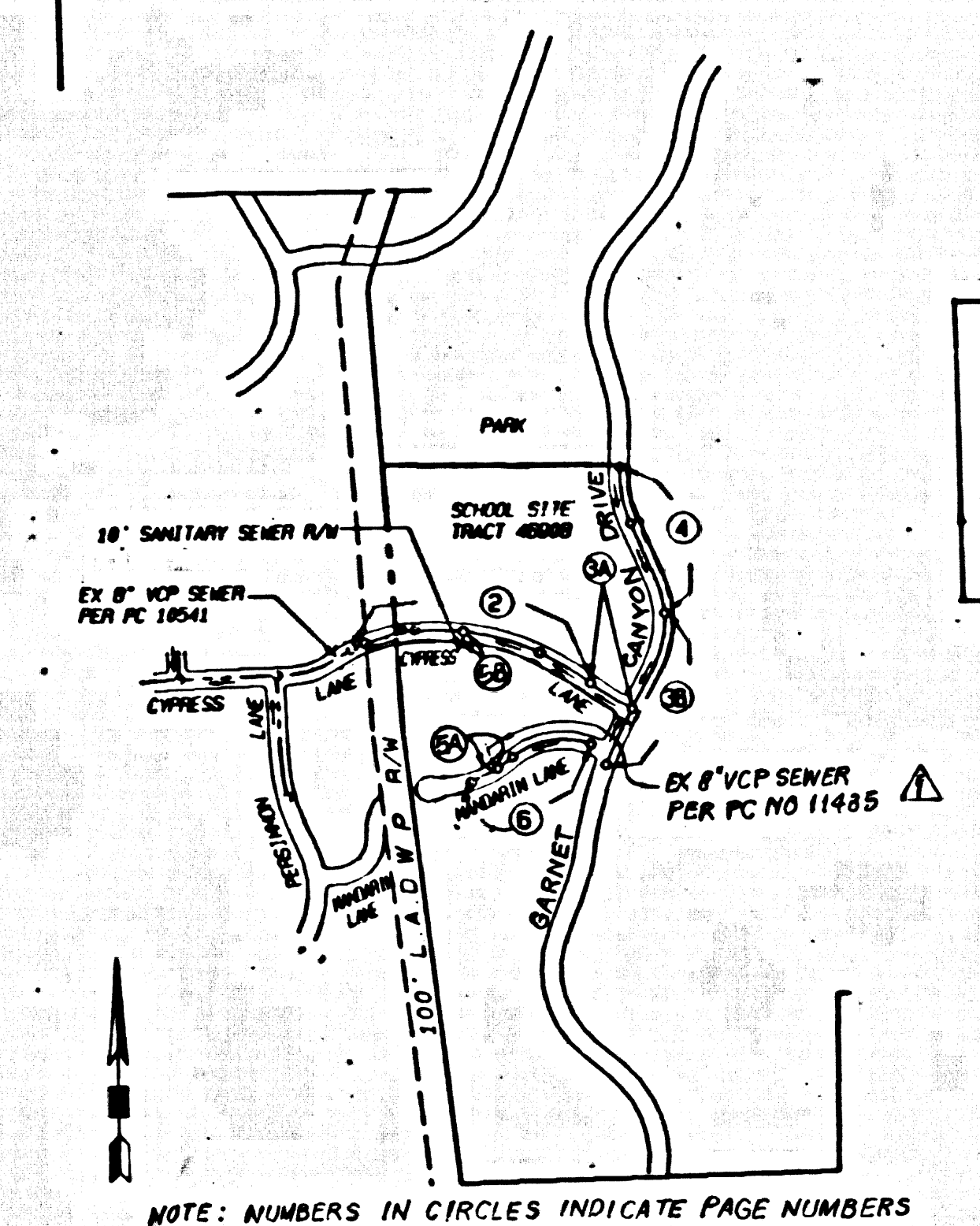


B.M. 3020 ELEV. 1337.954  
 L.C.M. IN SW COR. CONC. BASE STONE PLAGE OF  
 DEPT. OF WATER & POWER 88 FT. N.E. 3 FT. W. CAL  
 INT. SEC. CIV. RD. 6 SAN FRANCISCO CIV. RD.  
 NEWHALL QUAD. 1983



NOTE: NUMBERS IN CIRCLES INDICATE PAGE NUMBERS  
 INDEX MAP  
 SCALE: 1" = 600'  
 P.C. 11288 DS NO. 486  
 THOMAS GUIDE PG. NO. 4460-JE

**CONSTRUCTION NOTES (CONT'D): DOUBLE SCALE**

16. FULL COMPLIANCE WITH THE STANDARD SPECIFICATIONS AND THE SPECIAL PROVISIONS IS REQUIRED FOR THE INSTALLATION OF ADS COMPOSITE PIPE.
17. MANHOLE WALKER STEPS AND CLIMBERS ARE REQUIRED FOR THE CONNECTION OF ADS COMPOSITE PIPE TO MANHOLE STRUCTURES.
18. ADS COMPOSITE PIPE MUST BE USED FOR VISE AND HOUSE LATERAL CONNECTIONS TO ADS COMPOSITE MAINLINE SEWER PIPE.
19. ADS COMPOSITE PIPE SHALL BE SECTED IN CONFORMANCE WITH THE TABLE IN SECTION 300-1.2.1 OF THE SPECIAL PROVISIONS (SEE PAGES 40-23 THROUGH 40-30 OF THIS MANUAL).
20. THREE SEWER DEFLECTION COUPLERS ARE REQUIRED FOR RADIUS OF CURVATURE LESS THAN 300 FEET WHEN USING 8" ADS COMPOSITE PIPE.
21. NO CONNECTIONS FOR DISPOSAL OF INDUSTRIAL WASTE IS ALLOWED IF ADS COMPOSITE PIPE IS USED.
22. SEWER LINE COVERAGE SHALL NOT BE ACHIEVED BY PULLING OF JOINTS OR BEVELING PIPE ENDS WHEN USING PLASTIC PIPE INCLUDING ADS COMPOSITE PIPE.
23. ALL VISE AND/OR HOUSE LATERALS ARE TO BE LOCATED AT LEAST FIVE FEET APART AND WHEN POSSIBLE NOT CLOSER THAN FIVE FEET TO ANY MANHOLE.
24. ADS ONLY VISE PIPE IS NOT ACCEPTABLE FOR USE AS MAINLINE SEWER.
25. ADS ONLY BRANCHES ARE TO BE USED FOR CONNECTION TO ADS COMPOSITE MAINLINE SEWER PIPE.

REVISION NO. 1 DATE 2-12-96  
 PG. 1 DELETED DRY SEWER NOTES & ADDED CO. SAN. BLOCK  
 PG. 2 DELETED DRY SEWER NOTES & REVISED SEWER FROM STA. 13+20.90 TO 15+51.82 & ADDED CO. SAN. CONNECTION NOTES & TEL. NO.  
 PG. 3, 4, 5 & 6 DELETED DRY SEWER NOTES & ADDED CO. SAN. CONNECTION NOTES & TEL. NO.  
 APPROVED BY: *[Signature]* DATE 3-13-96  
 OFFICE OF THE DIRECTOR OF PUBLIC WORKS

**PRIVATE ENGINEERS NOTICE TO CONTRACTORS:**  
 THE EXISTENCE AND LOCATION OF ANY UNDERGROUND UTILITY PIPES OR STRUCTURES SHOWN ON THESE PLANS IS OBTAINED BY A SEARCH OF AVAILABLE RECORDS, TO THE BEST OF OUR KNOWLEDGE. THERE ARE NO EXISTING UTILITIES EXCEPT AS SHOWN ON THIS MAP. THE CONTRACTOR IS REQUIRED TO TAKE PRECAUTIONARY MEASURES TO PROTECT THE UTILITY LINES SHOWN AND ANY OTHER LINES NOT OF RECORD OR NOT SHOWN ON THIS PLAN. PRIOR TO EXCAVATION, THE CONTRACTOR SHALL CALL TOLL FREE 1-800-462-4123 TO VERIFY THE UNDERGROUND LOCATION OF GAS AND TELEPHONE LINES. THE CONTRACTOR SHALL ALSO CALL MR. RAY CLUMMINGS OF GENERAL TELEPHONE COMPANY AT 1-800-948-4871 SO THAT THEY CAN MARK THE LOCATION OF UNDERGROUND TELEPHONE LINES.

*[Signature]* 7-10-95  
 REGISTERED CIVIL ENGINEER NO. 19220 DATE

NO CONNECTION FOR THE DISPOSAL OF INDUSTRIAL WASTES SHALL BE MADE TO SEWERS SHOWN ON THESE DRAWINGS UNLESS A PERMIT FOR INDUSTRIAL WASTEWATER DISCHARGE HAS BEEN ISSUED BY THE SANITATION DISTRICTS FOR SAID CONNECTION.  
 BEFORE BREAKING INTO OR CONSTRUCTION ON A COUNTY SANITATION DISTRICT SEWER AND PRIOR TO FINAL ACCEPTANCE OF THE PROJECT, A SANITATION DISTRICT INSPECTOR SHALL BE NOTIFIED BY PHONE AT (800) 288-4883 SO THAT REQUIRED INSPECTIONS CAN BE MADE.

**GENERAL NOTES:**

1. A SEWER CONSTRUCTION PERMIT SHALL BE OBTAINED AND A FEE PAID FOR CONSTRUCTION INFORMATION AND RECORD PLANS TO THE DEPARTMENT OF PUBLIC WORKS AT THE PERMIT LOCATION: 300 SOUTH FRENCH AVENUE, 8TH FLOOR, ALHAMBRA, AT LEAST 72 HOURS PRIOR TO STARTING WORK UNDER THIS CONTRACT. ALL OTHER REQUIRED PERMITS, SUCH AS ROAD EXCAVATION, CALTRANS ETC., MUST BE FILED WITH THE PERMIT APPLICATION.
2. PRIOR TO ISSUANCE OF ANY PERMIT THE CONTRACTOR SHALL FILE A PERMIT FOR EXCAVATIONS AND TRAFFICS FROM THE STATE OF CALIFORNIA DIVISION OF INDUSTRIAL SAFETY AND A CERTIFICATE OF WORKING COMPENSATION INSURANCE WITH THE DEPARTMENT OF PUBLIC WORKS NAMED AS THE CERTIFICATE HOLDER TO BE NOTIFIED 30 DAYS PRIOR TO CANCELLATION OF POLICY.
3. IF WORK IS TO BE DONE IN A STATE HIGHWAY, A PERMIT MUST BE OBTAINED FROM THE STATE OF CALIFORNIA DIVISION OF HIGHWAYS, 120 SOUTH SPRING STREET, LOS ANGELES, CALIFORNIA.
4. WHEN WORK IS WITHIN A CONTRACT CITY, THE CONTRACTOR MUST CONTACT THE DIRECTOR OF PUBLIC WORKS OF THAT CITY TO DETERMINE THE LOCATION TO PAY THE IMPROVEMENT FEE.
5. THE CONTRACTOR SHALL CONTACT THE DISTRICT OFFICE LISTED ON THE "APPLICATION FOR CONSTRUCTION PERMIT" TO ARRANGE FOR AN ACCEPTABLE CONSTRUCTION START DATE, AND SHALL NOTIFY THE CONSTRUCTION DIVISION BY TELEPHONE (800) 462-4123 AT LEAST THIRTY-FOUR HOURS BEFORE STARTING ANY WORK UNDER THIS CONTRACT.
6. APPROVAL OF THIS PLAN BY THE COUNTY OF LOS ANGELES DOES NOT CONSTITUTE A REPRESENTATION AS TO ACCURACY OF THE LOCATION OF OR THE EXISTENCE OR NON-EXISTENCE OF ANY UNDERGROUND UTILITY PIPES OR STRUCTURE WITHIN THE LIMITS OF THIS PROJECT. THIS NOTE APPLIES TO ALL PAGES.
7. ALL WORK SHALL BE IN ACCORDANCE WITH THE "STANDARD SPECIFICATIONS FOR PUBLIC WORKS CONSTRUCTION, INCLUDING SPECIAL PROVISIONS AND THE SPECIAL PROVISIONS FOR THE CONSTRUCTION OF SANITARY SEWERS, AND SHALL BE PROSECUTED ONLY IN THE PRESENCE OF THE DEPARTMENT OF PUBLIC WORKS PERSONNEL.
8. THE CONTRACTOR'S ATTENTION IS DIRECTED TO SECTION 7-15.4.1 OF THE STANDARD SPECIFICATIONS FOR PUBLIC WORKS CONSTRUCTION IN REGARD TO SAFETY ORDERS AND SHALL CONFORM TO THE "MINIMUM PUBLIC SAFETY REQUIREMENTS" AS SHOWN ON LOS ANGELES DEPARTMENT OF PUBLIC WORKS STANDARD 2003-8.
9. ELEVATIONS ARE IN FEET ABOVE U.S.C. & G.S. MEAN LEVEL DATUM OF 1989.
10. NO REVISIONS SHALL BE MADE IN THESE PLANS WITHOUT THE APPROVAL OF THE DIRECTOR OF PUBLIC WORKS.
11. NO REPRESENTATIVE OF THE DEPARTMENT OF PUBLIC WORKS WILL SURVEY OR LAY OUT ANY PORTION OF THE WORK.
12. CENTERLINE OF STREETS OR CENTERLINE OF ALLEYS, AND ISOBARS BY CIRCLES ON PROFILES AT ALL POINTS BETWEEN DESIGNATED POINTS THE GRADE SHALL BE ESTABLISHED SO AS TO CONFORM TO A STRAIGHT LINE BETWEEN SAID DESIGNATED POINTS.
13. THE PRIVATE ENGINEER SHALL FURNISH THE DEPARTMENT OF PUBLIC WORKS WITH GRADE SHEETS AND STATIONING FOR ALL HOUSE LATERALS AND THE LATERALS SHALL BE CONSTRUCTED IN A STRAIGHT ALIGNMENT AT RIGHT ANGLES FROM THE MAINLINE SEWER MANHOLE. ALLOWABLE TRENCH WIDTHS SHALL BE ESTABLISHED IN WRITING BY THE PRIVATE ENGINEER.
14. THE PRIVATE ENGINEER SHALL FURNISH THE HOUSE LATERAL DEPTH AT THE PROPERTY LINE BELOW THE TOP CURB ELEVATION FOR EACH HOUSE LATERAL ON THE GRADE SHEET.
15. THE LATEST REVISED STANDARD PLAN OR DRAWING SHALL BE USED UNLESS OTHERWISE SPECIFICALLY NOTED.

**CONSTRUCTION NOTES:**

1. THE LATEST REVISED STANDARD PLAN OR DRAWING SHALL BE USED UNLESS OTHERWISE SPECIFICALLY NOTED.
2. VITRIFIED CLAY PIPE JOINTS SHALL BE TYPE "D" OR "E" FOR STANDARD SPECIFICATIONS SECTION 200-2.
3. IF A MANHOLE IS WITHIN THREE FEET OF THE CURB, THE SEWER SHALL BE ENCASED PER STANDARD 2003-8, CASE 11, TWO FEET ON EACH SIDE FROM THE POINT OF INTERFERENCE.
4. ALL JOINTS BETWEEN CAST IRON PIPE AND VITRIFIED CLAY PIPE SHALL BE MADE WITH A RUBBER SLEEVE JOINT, TYPE "D" WITHIN BUILDING IF NECESSARY PER STANDARD SPECIFICATIONS SECTION 200-2.
5. HOUSE LATERALS TO BE CONSTRUCTED WITH INVERTS AT PROPERTY LINE 8 FEET BELOW CURB GRADE EXCEPT AS NOTED.
6. VISE OR BRANCHES MAY BE USED FOR CONNECTIONS TO MAINLINE SEWERS EXCEPT AS NOTED.
7. IF DURING THE COURSE OF CONSTRUCTION, IT IS DETERMINED THAT THERE ARE LESS THAN FOUR FEET OF COVER OVER THE TOP OF A MAINLINE OR HOUSE LATERAL, V.C.P. SEWERS WHICH ARE NOT INDICATED ON THE PLANS AND THE PIPE SHALL BE ENCASED PER STANDARD PLAN 2003-8 CASE 11, UNLESS OTHERWISE SPECIFIED BY THE DIRECTOR OF PUBLIC WORKS.
8. ALL STRUCTURES SHALL BE EITHER BRICK OR PRECAST CONCRETE PER STANDARD PLAN 2003-8, EXCEPT AS NOTED.
9. RESURFACE ALL TRENCHES WITHIN PAVED AREAS TO MEET LOS ANGELES COUNTY PUBLIC WORKS OR CALIFORNIA STATE HIGHWAY REQUIREMENTS IN ACCORDANCE WITH THE STANDARD SPECIFICATIONS.
10. FULL COMPLIANCE WITH SECTION 200-1.3.4 OF THE STANDARD SPECIFICATIONS WILL BE REQUIRED FOR BACKFILL IN STREETS. CERTIFICATION BY THE CONTRACTOR AND A QUALIFIED CIVIL ENGINEER SHALL BE PROVIDED BY THE PERMITTEE PRIOR TO THE ISSUANCE OF A CERTIFICATE OF PARTIAL ACCEPTANCE.
11. ALL BACKFILL AND FILL OUTSIDE OF STREET RIGHT OF WAY SHALL BE COMPACTED TO 90% OF MAXIMUM DENSITY AS DETERMINED BY ASTM 2003 CONSTRUCTION TEST METHOD. UNLESS OTHERWISE SPECIFIED, THIS SHALL BE CERTIFIED BY A QUALIFIED CIVIL ENGINEER PRIOR TO ACCEPTANCE OF THE WORK BY THE COUNTY.
12. MANHOLE TOPS IN IMPROVED RIGHTS OF WAY TO BE LEVEL WITH FINISHED GRADE.
13. SEWERS TO BE TESTED FOR LEAKAGE PER SECTION 200-1.4 OF THE STANDARD SPECIFICATION AND SPECIAL PROVISIONS.
14. VISE AND/OR HOUSE LATERALS ARE TO BE LOCATED AT LEAST FIVE FEET APART AND WHEN POSSIBLE NOT CLOSER THAN FIVE FEET TO ANY MANHOLE.

PROFILE, ALIGNMENT AND GRADE OF  
**SANITARY SEWERS**  
 TO BE CONSTRUCTED IN

DS No. 486  
 INDEX 1294  
 3 SHEETS: 6 PAGES

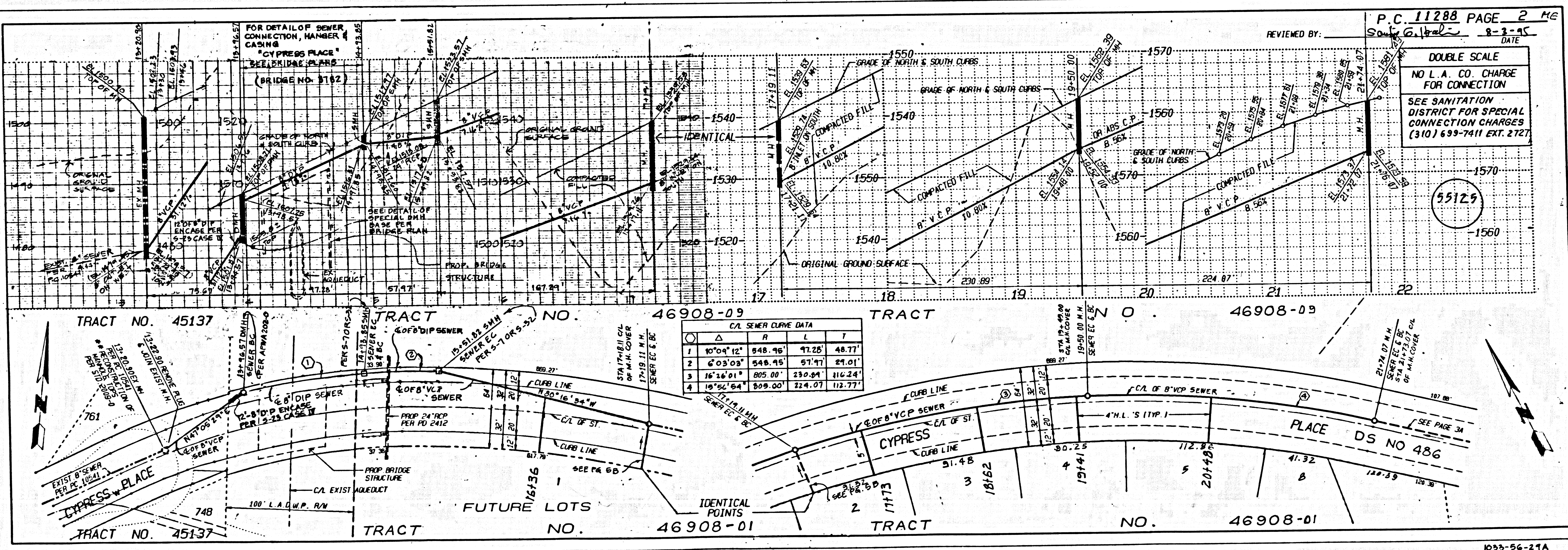
PRIVATE CONTRACT NO. 11288  
 INDEX 1294  
 3 SHEETS: 6 PAGES

SCALE: VERT. 1" = 8'  
 HORIZ. 1" = 40'  
 JULY, 1995  
 PREPARED IN THE OFFICES OF  
 SIKAND ENGINEERING  
 15230 BURBANK BLVD., VAN NUYS, CA 91411-3606  
 TEL (818) 763-9550  
 BY: *[Signature]* REG. C.E. NO. 19220

THE FOLLOWING LATEST REVISED STANDARD PLANS ON FILE IN THE OFFICE OF THE DEPARTMENT OF PUBLIC WORKS SHALL APPLY IN THE CONSTRUCTION OF THIS PROJECT

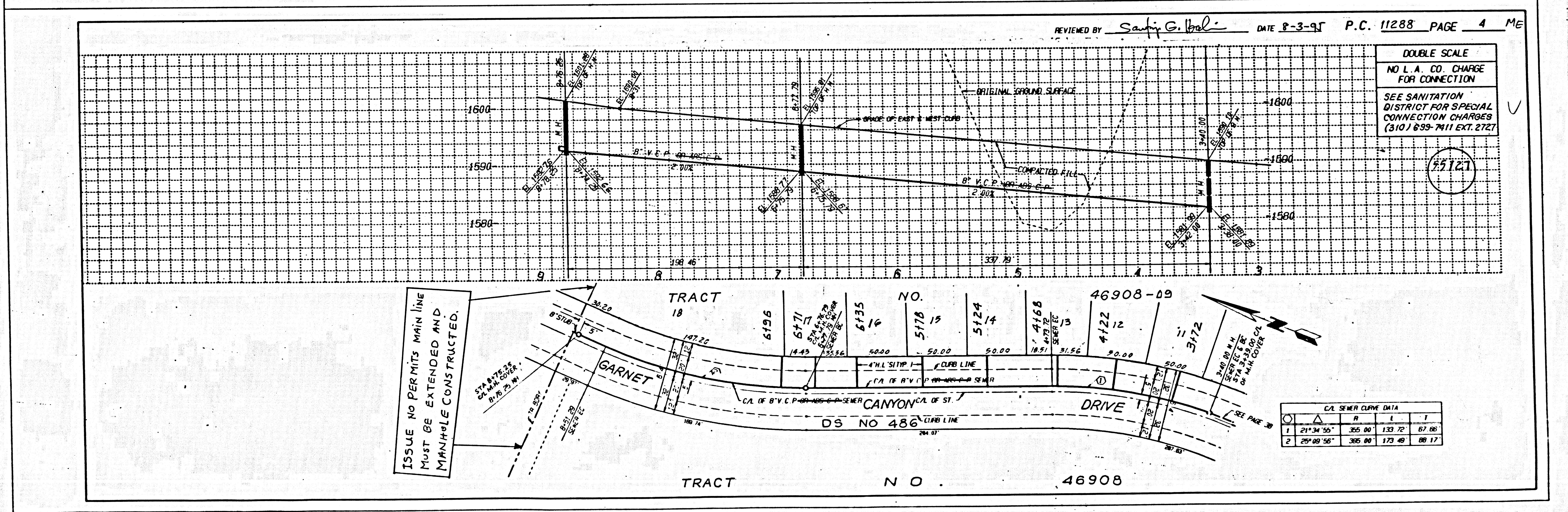
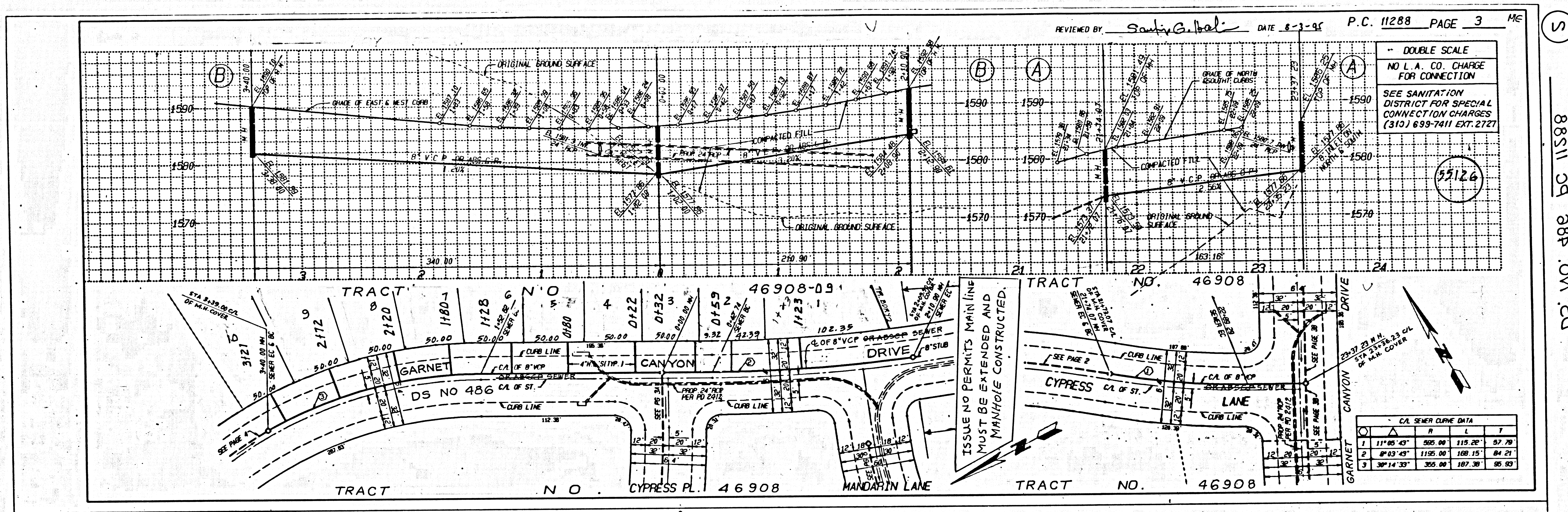
LEGEND:	S-1	12000-8 LACDPW STD. 1000 ED 1
MINIMUM PUBLIC SAFETY REQUIREMENTS	S-2	12000-8 LACDPW STD. 1000 ED 1
BRICK MANHOLE	S-3	12003-8 LACDPW STD. 1000 ED 1
RECONSTRUCTION OF BRICK MANHOLE TOPS	S-18	12000-8 LACDPW STD. 1000 ED 1
STANDARD MANHOLE STEP	S-17	12018-8 LACDPW STD. 1000 ED 1
BEDDING FOR SEWER PIPE	S-21	12001-8 LACDPW STD. 1000 ED 1
BEDDING FOR ADS AND VCP SEWER PIPE	S-21A	12002-8 LACDPW STD. 1000 ED 1
CHAMBER AND ENCASMENT	S-29	12007-8 LACDPW STD. 1000 ED 1
VISE OR VISE SUPPORT	S-30	12004-8 LACDPW STD. 1000 ED 1
EROSION PROTECTION IN STEEP SLOPES	S-31	12005-8 LACDPW STD. 1000 ED 1
PRECAST CONCRETE SHALLOW MANHOLE	S-32	12006-8 LACDPW STD. 1000 ED 1
ALLOWABLE TRENCH WIDTHS	S-33	12007-8 LACDPW STD. 1000 ED 1
LOCKING MANHOLE FRAME AND COVER	S-35	1210 APWA-ADCI
NON-REINFORCED PRECAST CONCRETE MANHOLE	S-36	12001-8 LACDPW STD. 1000 ED 1

COUNTY OF LOS ANGELES, CALIFORNIA  
 HARRY W. STONE  
 DIRECTOR OF PUBLIC WORKS  
 APPROVED *[Signature]* 8-1-95  
 CHIEF ENGINEER  
 APPROVED *[Signature]* 8-1-95  
 CO SAN DIST. ENGINEER  
 APPROVED *[Signature]* 2-15-96  
 OFFICE ENGINEER  
 DECKED *[Signature]* 8-4-95  
 REG. C.E. NO. 45641  
 SANTA CLARITA VALLEY BLDG. DIST. B-2  
 DROP SEWER MANHOLE 202-0 (APWA)



P.C. 11288, PAGE 2 OF 6  
 DOUBLE SCALE  
 NO L.A. CO. CHARGE FOR CONNECTION  
 SEE SANITATION DISTRICT FOR SPECIAL CONNECTION CHARGES (310) 699-7411 EXT. 2727  
 55129

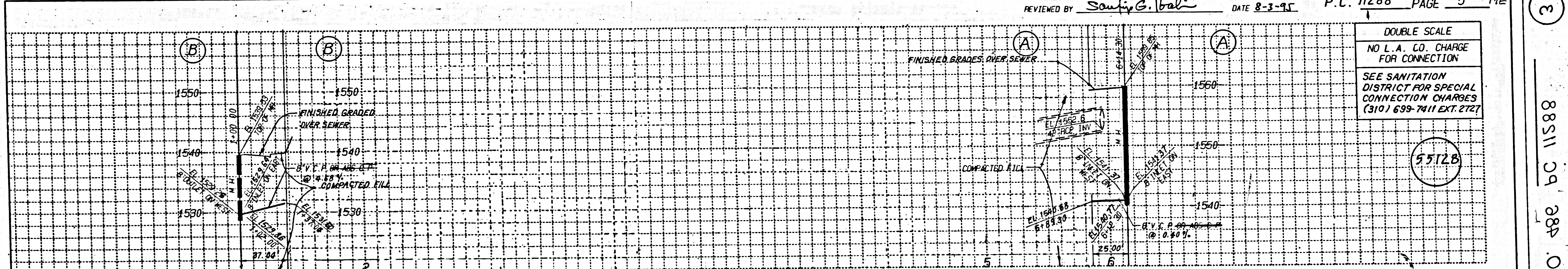




2

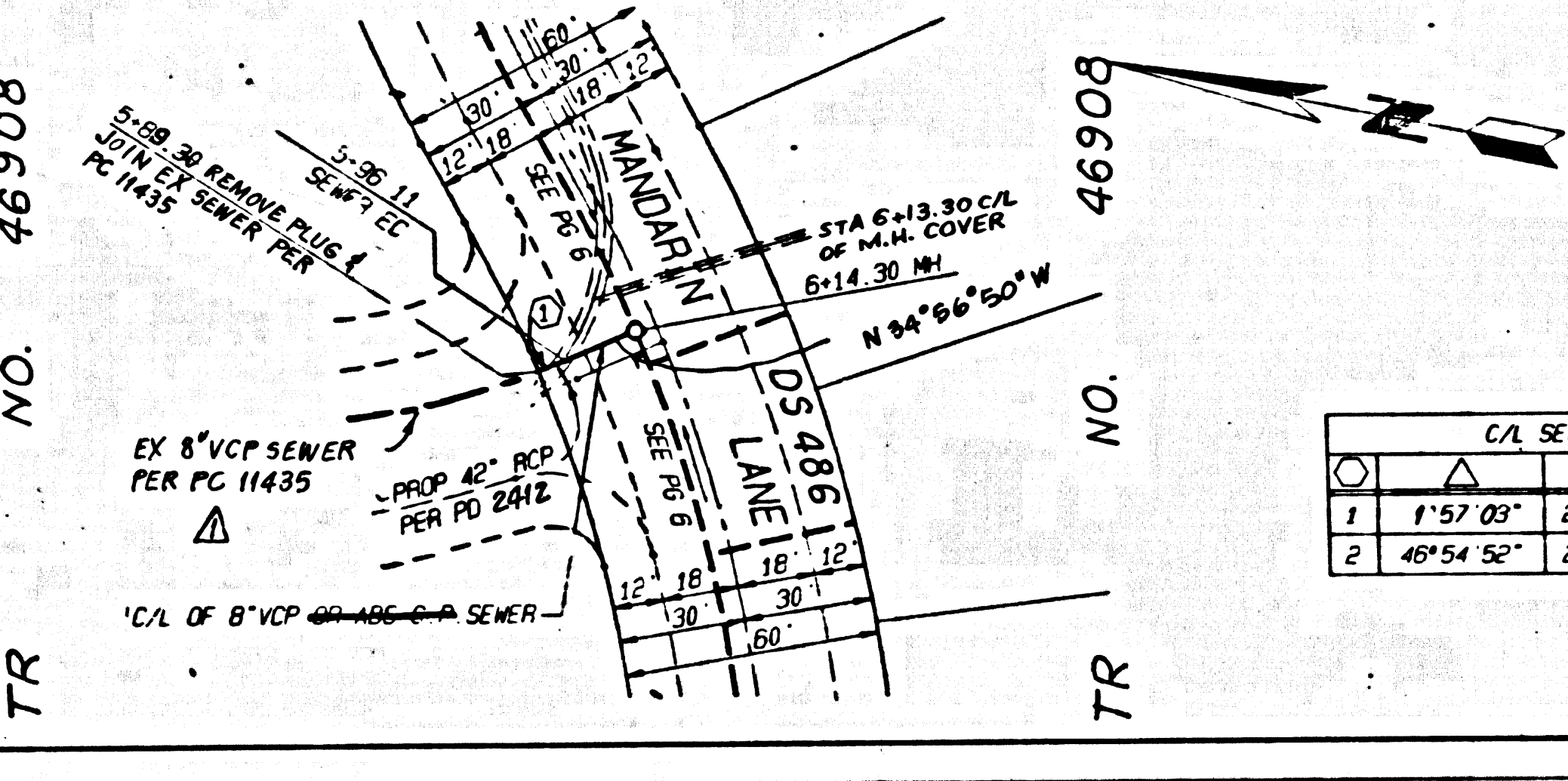
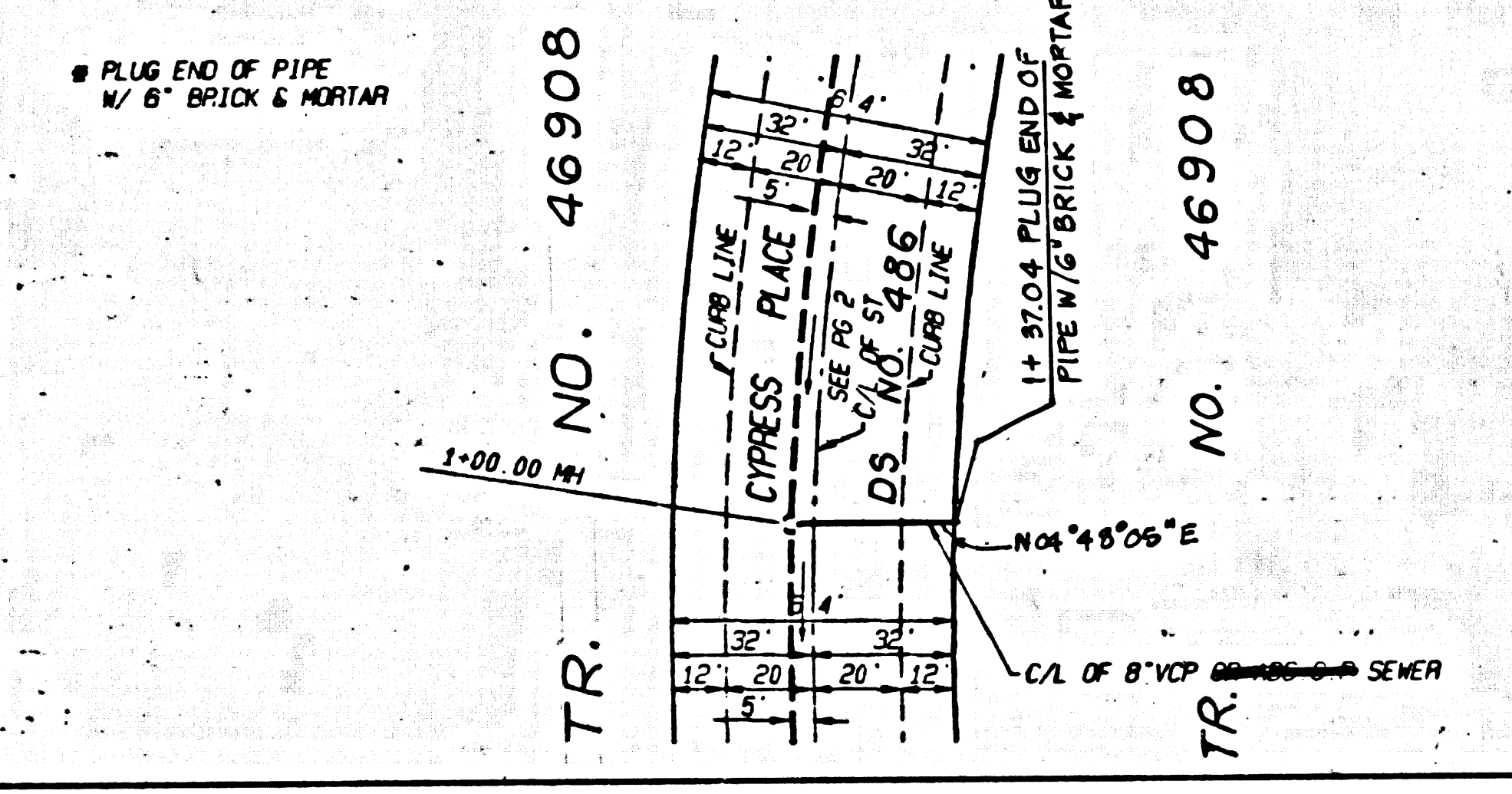
8811 02 484 04 22



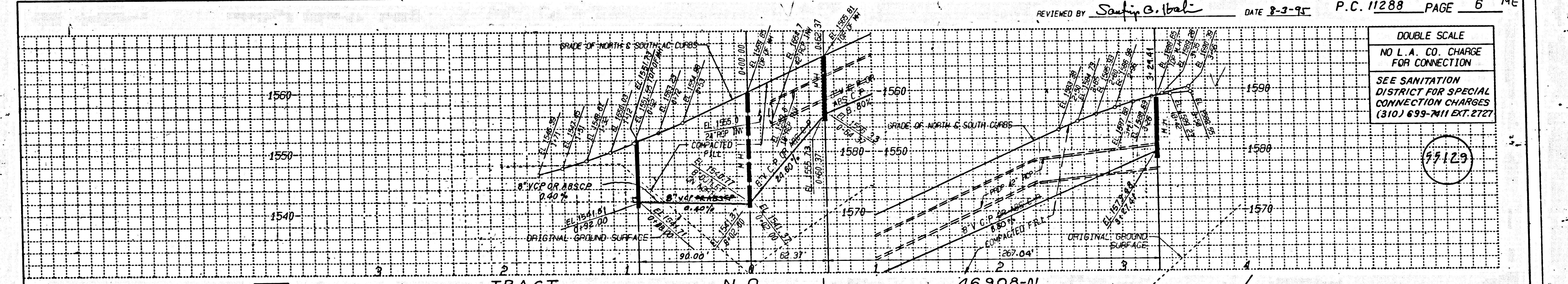


DOUBLE SCALE  
NO L. A. CO. CHARGE  
FOR CONNECTION  
SEE SANITATION  
DISTRICT FOR SPECIAL  
CONNECTION CHARGES  
(310) 699-7411 EXT. 2727

55128

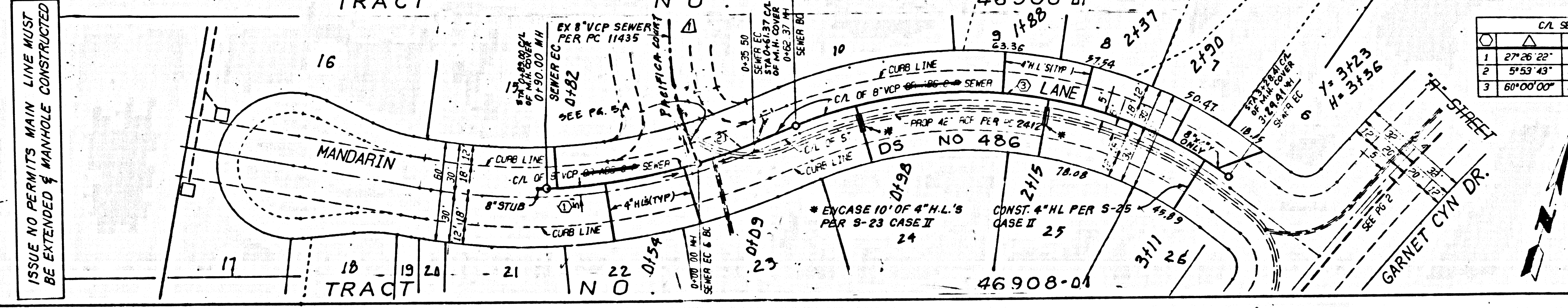


C/L SEWER CURVE DATA				
	R	L	T	
1	1°57'03"	200.00'	16.81'	3.41'
2	46°54'52"	200.00'	163.75'	86.79'



DOUBLE SCALE  
NO L. A. CO. CHARGE  
FOR CONNECTION  
SEE SANITATION  
DISTRICT FOR SPECIAL  
CONNECTION CHARGES  
(310) 699-7411 EXT. 2727

55129



C/L SEWER CURVE DATA				
	R	L	T	
1	27°26'22"	345.00'	165.22'	84.23'
2	5°53'43"	345.00'	35.50'	17.76'
3	66°00'00"	255.00'	267.04'	147.22'

88511 09 488 0V 2D