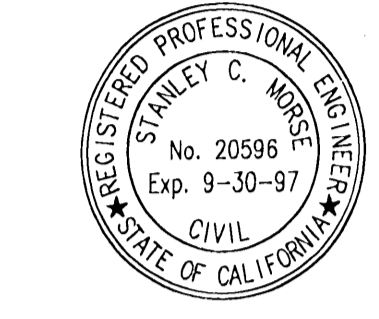


SANITARY SEWERS 54464

TO BE CONSTRUCTED IN TRACT NO. 45546-01 THRU 14 PRIVATE CONTRACT NO. 11295

INDEX 1906 13 SHEETS; 25 PAGES

SCALE: VERT. 1" = 8' HORIZ. 1" = 40' SEPT. 1996



PREPARED IN THE OFFICES OF MDS CONSULTING 1320 REDHILL AVENUE PASADENA, CALIF. 91106 TEL. NO. (714) 251-8821

Table listing standard plans on file in the office of the Department of Public Works, including items like Minimum Public Safety Requirements, Sewer Manhole, and various pipe and trench standards.

COUNTY OF LOS ANGELES, CALIFORNIA HARRY W. STONE DIRECTOR OF PUBLIC WORKS CHARLES W. CARRY CHIEF ENGINEER

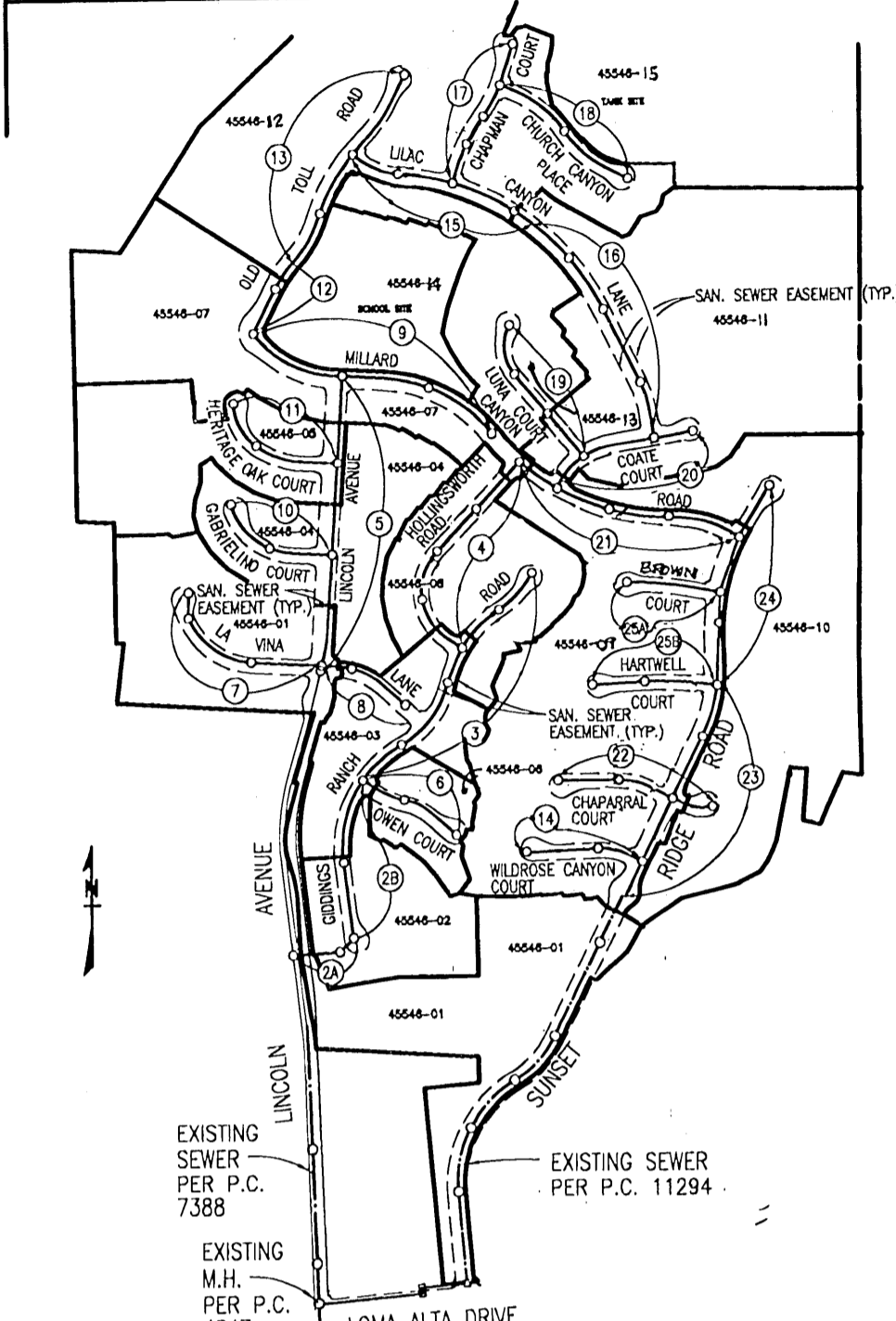
GENERAL NOTES:

- 1. A SEWER CONSTRUCTION PERMIT SHALL BE OBTAINED AND A FEE PAID FOR CONSTRUCTION INSPECTION AND RECORD PLANS TO THE DEPARTMENT OF PUBLIC WORKS AT THE PERMIT OFFICE, 300 SOUTH FREMONT AVENUE 5TH FLOOR, ALHAMBRA AT LEAST 72 HOURS PRIOR TO STARTING WORK UNDER THIS CONTRACT.

CONSTRUCTION NOTES

- 1. PROVIDE SURVEY STAKES ON THE PROPERTY LINE OR PROPERTY LINES PRODUCED AT RIGHT ANGLES TO THE SEWER LINE AT THE CENTERLINE OF EACH MANHOLE.

B.M. DY 5077 ELEV. 1304.124 CS MON. IN WELL 1 FT E @ LINCOLN AVE. & 8 FT S @ LOMA ALTA DR MKD (TRA STA MOUNT LOWE E 12 RE 2177 1940) BASELINE 1990 PASADENA QUAD. 19 90



INDEX MAP E-1906, 1905 TRACT NO. 45546-01 THRU 14 P.C. 11295

THE EXISTENCE AND LOCATION OF ANY UNDERGROUND UTILITY PIPES OR STRUCTURES SHOWN ON THESE PLANS ARE OBTAINED BY A SEARCH OF THE AVAILABLE RECORDS TO THE BEST OF MY KNOWLEDGE THERE ARE NO EXISTING UTILITIES EXCEPT AS SHOWN ON THESE PLANS.

NOTE: ISSUE NO HOUSE LATERALS CONNECTION PERMITS UNTIL OUTLET SEWER P.C. 11294 IS ACCEPTED FOR PUBLIC USE BY THE COUNTY OF LOS ANGELES.

ABS COMPOSITE PIPE STANDARD CONSTRUCTION NOTES

- THE FOLLOWING ARE STANDARD ABS COMPOSITE PIPE CONSTRUCTION NOTES: 1. FULL COMPLIANCE WITH THE STANDARD SPECIFICATIONS ARE REQUIRED FOR THE INSTALLATION OF ABS COMPOSITE PIPE.

Table listing lot numbers and their corresponding revision numbers for various tracts.

REVISION NO. 1 DATE 8/4/97 REVISED LOT FRONTAGE DIMENSIONS TO AGREE WITH RECORDED TRACT MAPS.

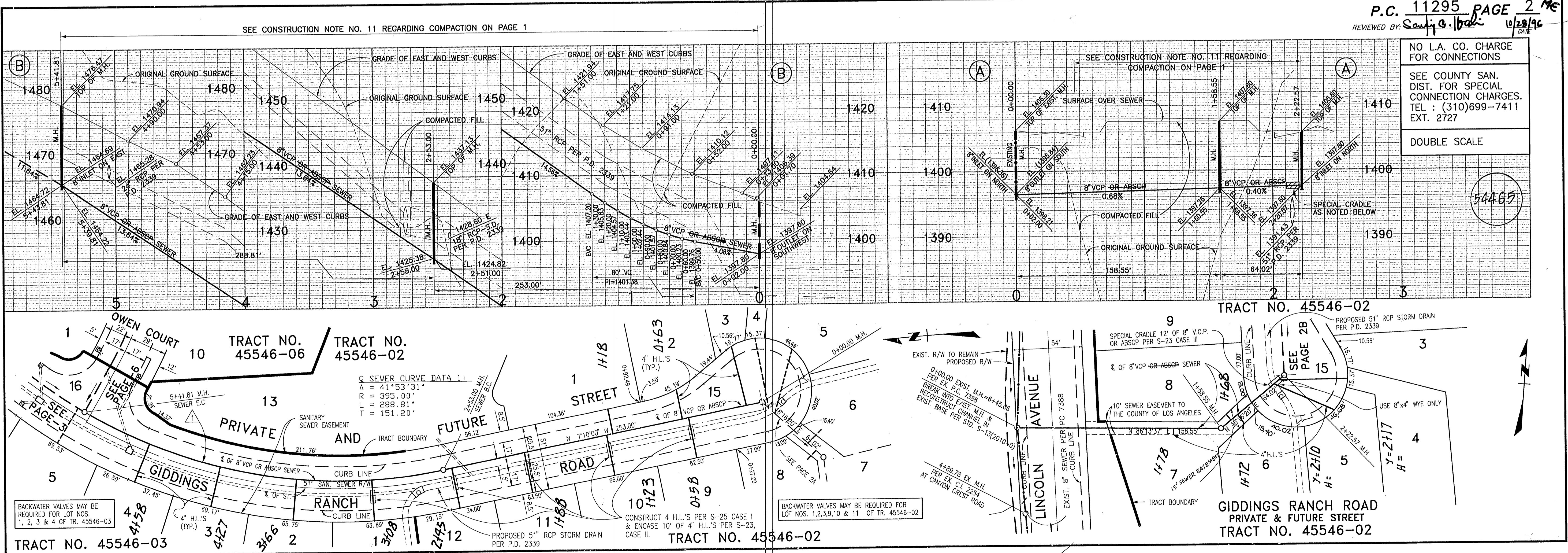
REVISION NO. 2 DATE 11-14-97 PAGE 1 - REVISED INDEX MAP COMBINED TR. NO. 45546-03, 04, 05, 06 INTO TR. NO. 45546-08 BY REVISING TRACT BOUNDARIES.

THE ABOVE LOTS ARE RESTRICTED TO NO CONSTRUCTION OF RESIDENTIAL BUILDING AND WILL NOT BE SERVED BY THIS SEWER.

NO CONNECTION FOR THE DISPOSAL OF INDUSTRIAL WASTES SHALL BE MADE TO SEWERS SHOWN ON THESE DRAWINGS UNTIL A PERMIT FOR INDUSTRIAL WASTEWATER DISCHARGE HAS BEEN ISSUED BY THE SANITATION DISTRICTS FOR SAID CONNECTION.

BEFORE BREAKING INTO OR CONSTRUCTION ON A COUNTY SANITATION DISTRICT SEWER AND PRIOR TO FINAL ACCEPTANCE OF THE PROJECT, A SANITATION DISTRICT INSPECTOR SHALL BE NOTIFIED BY PHONE AT (818) 962-8605 SO THAT REQUIRED INSPECTIONS CAN BE MADE.

NO L.A. CO. CHARGE FOR CONNECTIONS SEE COUNTY SAN. DIST. FOR SPECIAL CONNECTION CHARGES. TEL : (310)699-7411 EXT. 2727



TRACT NO. 45546-03 BACKWATER VALVES MAY BE REQUIRED FOR LOT NOS. 1, 2, 3 & 4 OF TR. 45546-03

TRACT NO. 45546-02 CONSTRUCT 4 H.L.'S PER S-25 CASE I & ENCASE 10' OF 4' H.L.'S PER S-23, CASE II.

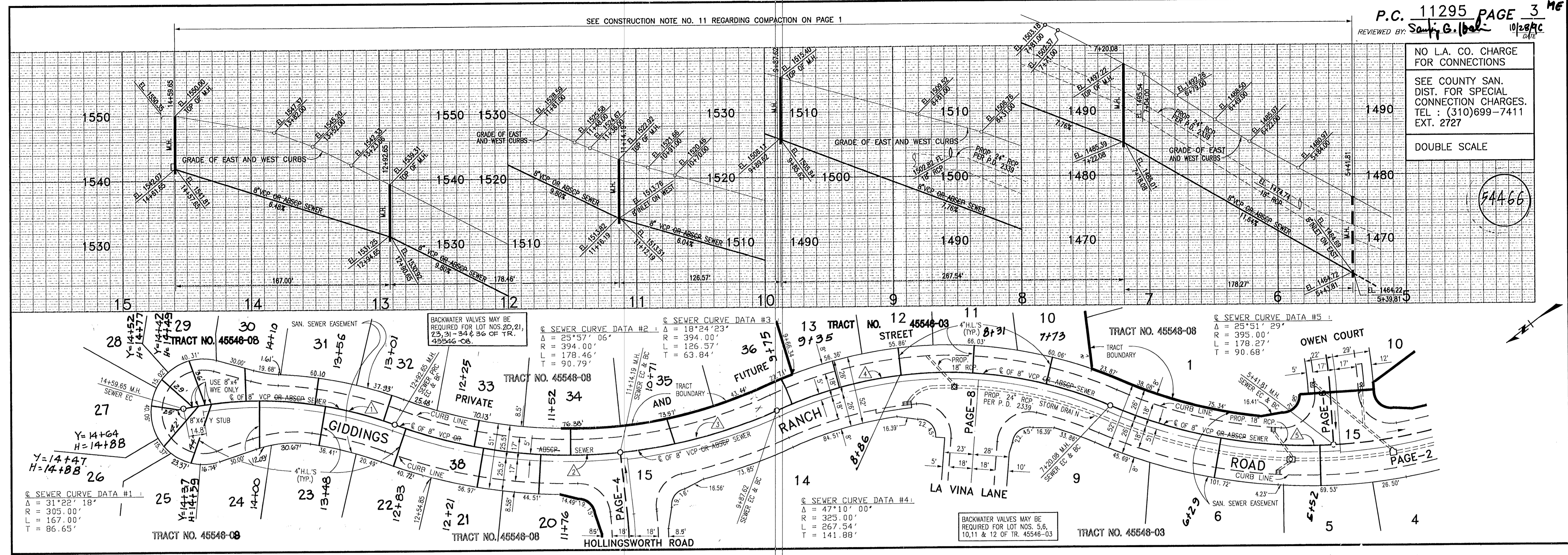
TRACT NO. 45546-02 GIDDINGS RANCH ROAD PRIVATE & FUTURE STREET

S

BC 11502

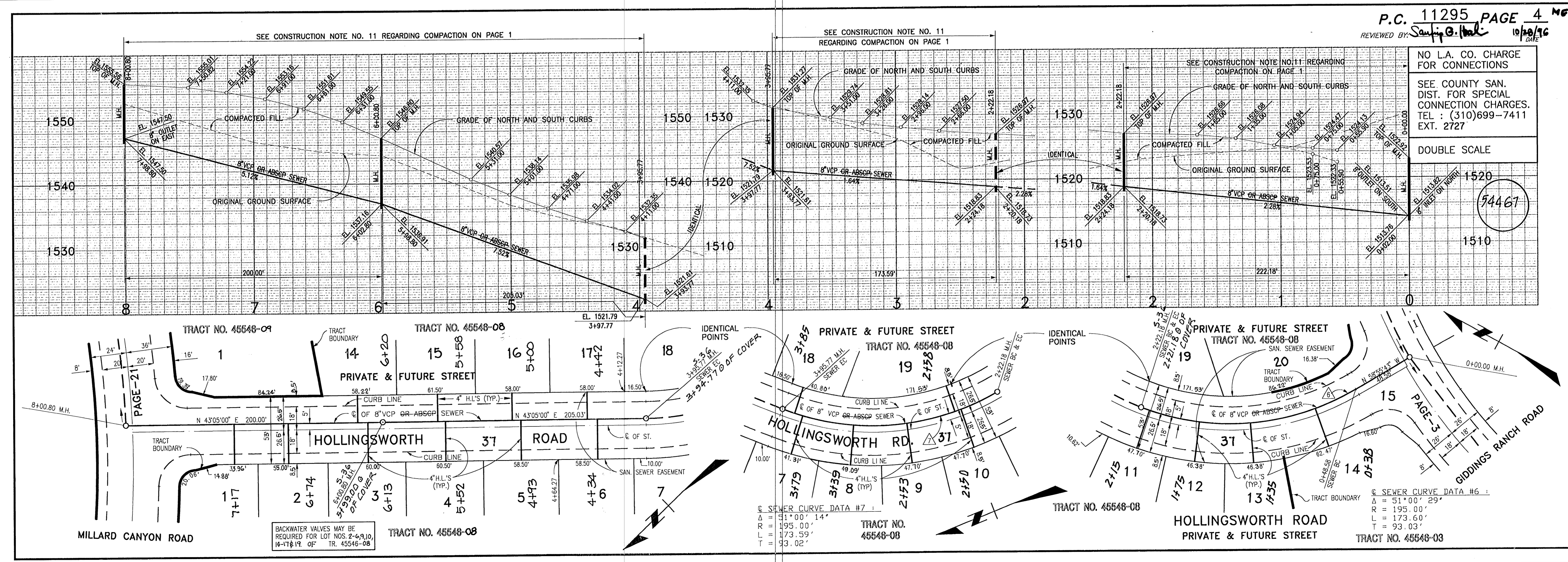
NO L.A. CO. CHARGE FOR CONNECTIONS
SEE COUNTY SAN. DIST. FOR SPECIAL CONNECTION CHARGES. TEL : (310)699-7411 EXT. 2727
DOUBLE SCALE

54466



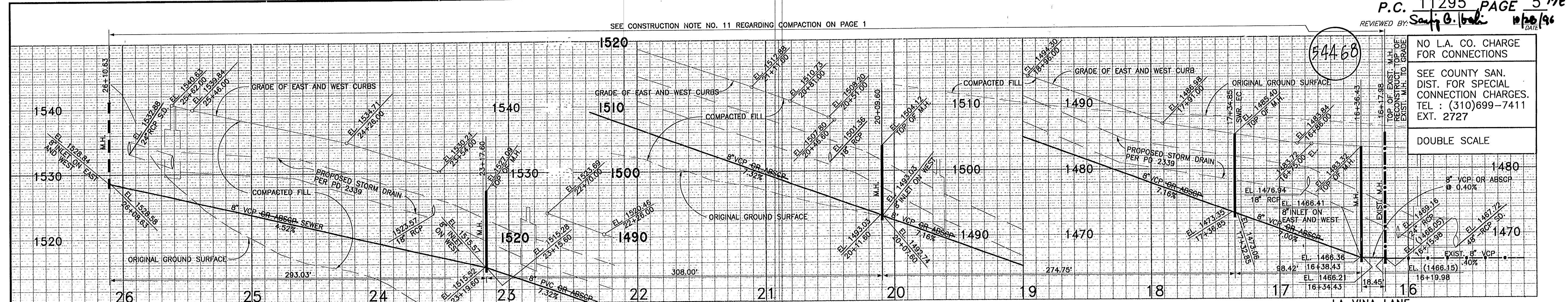
NO L.A. CO. CHARGE FOR CONNECTIONS
SEE COUNTY SAN. DIST. FOR SPECIAL CONNECTION CHARGES. TEL : (310)699-7411 EXT. 2727
DOUBLE SCALE

54467

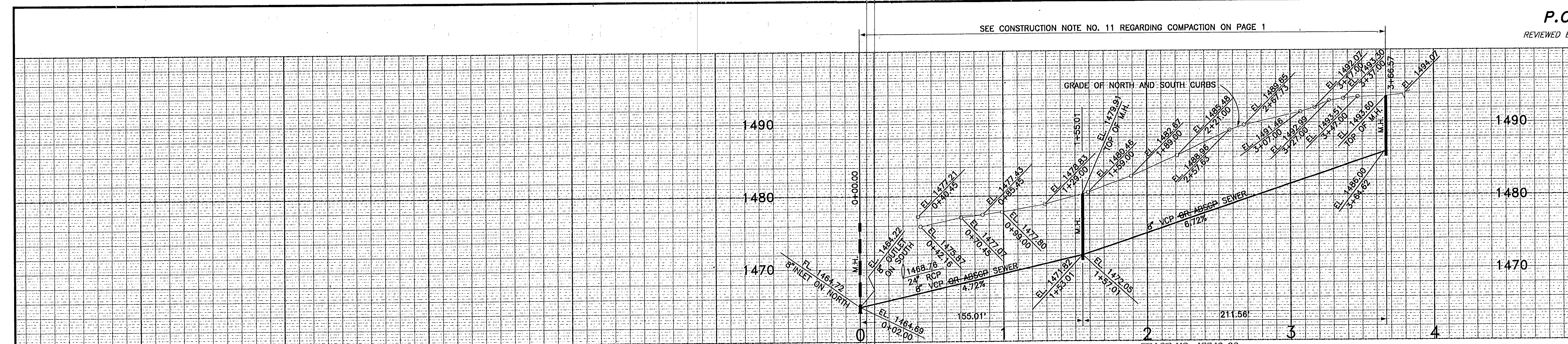
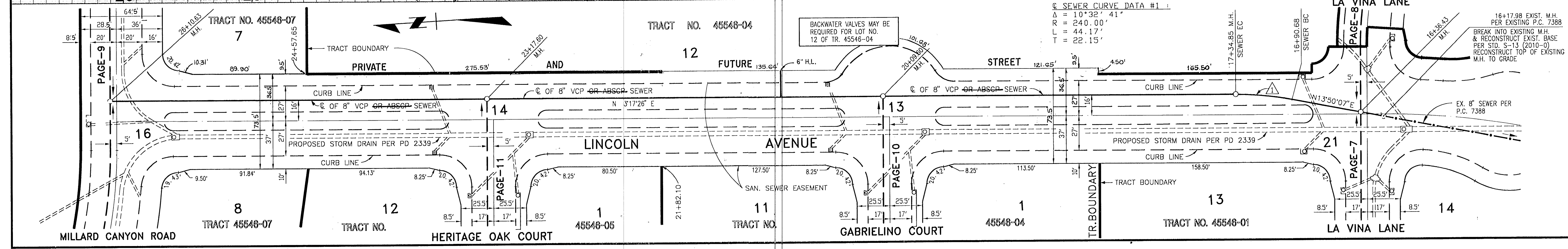


3

BC 1529



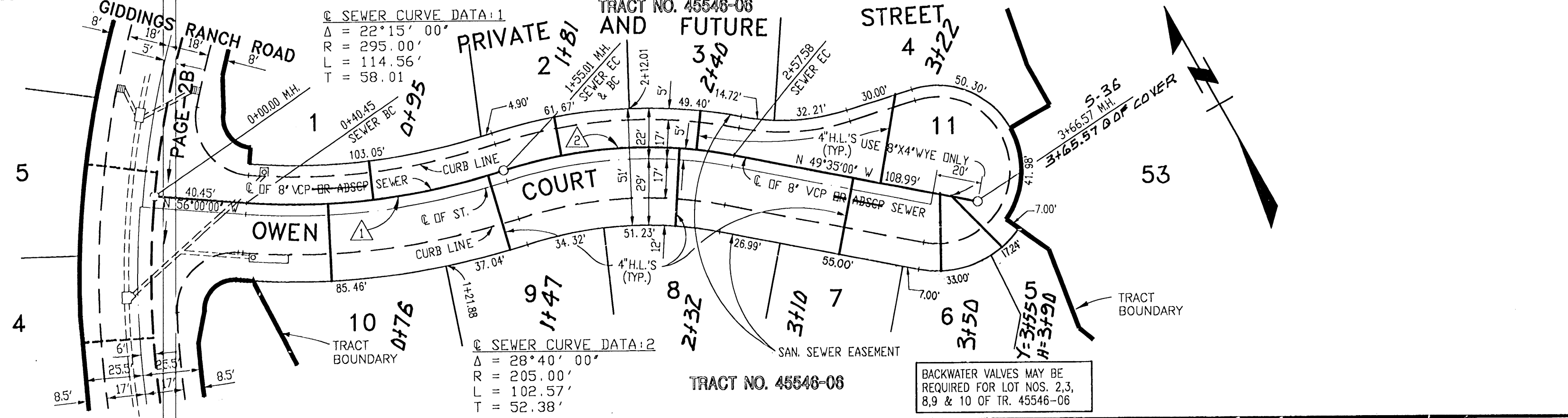
NO L.A. CO. CHARGE FOR CONNECTIONS
 SEE COUNTY SAN. DIST. FOR SPECIAL CONNECTION CHARGES. TEL : (310)699-7411 EXT. 2727
 DOUBLE SCALE



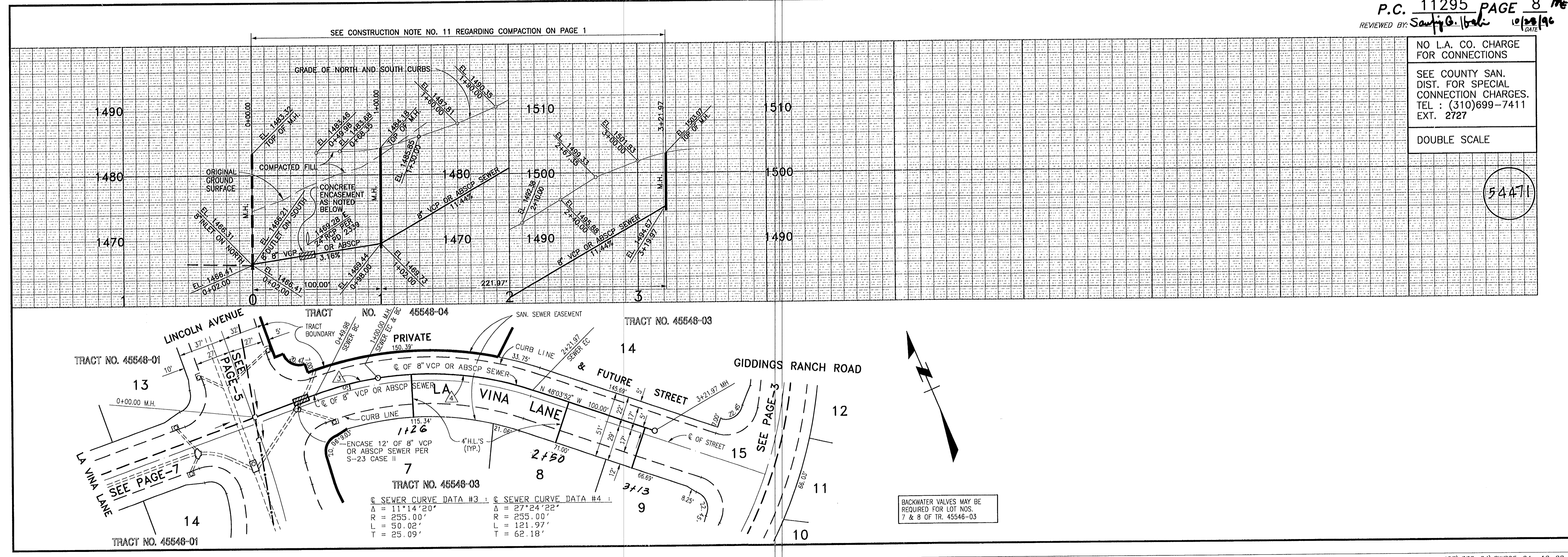
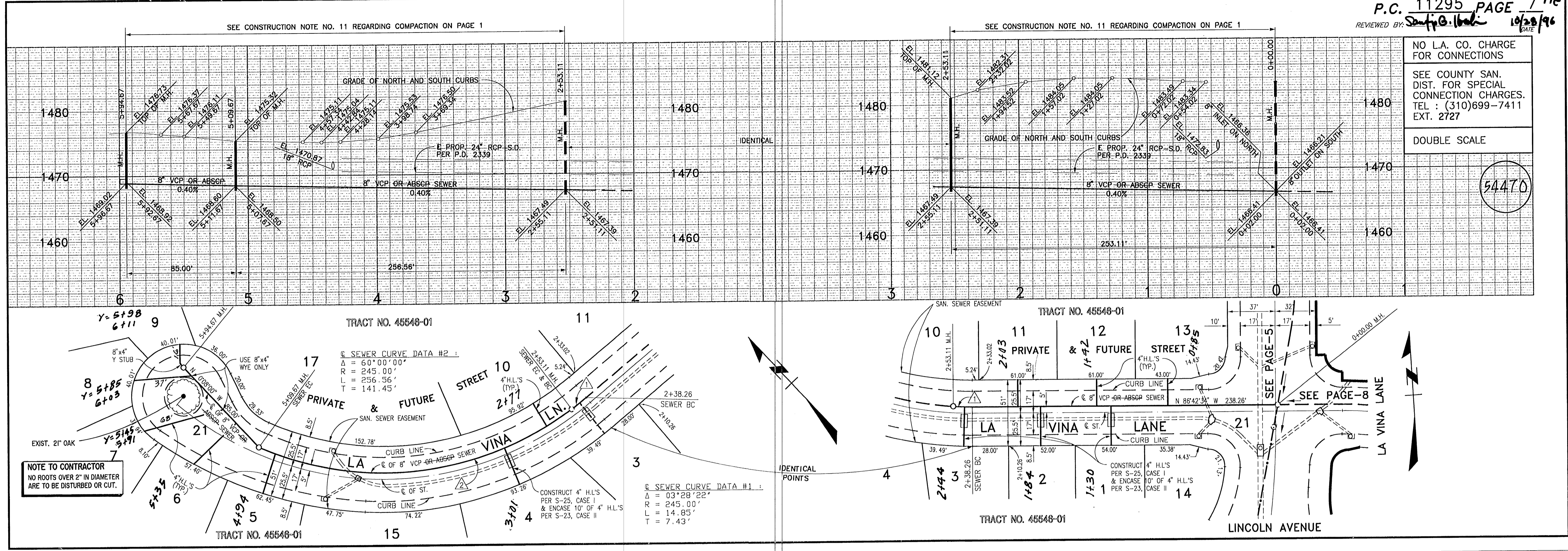
NO L.A. CO. CHARGE FOR CONNECTIONS
 SEE COUNTY SAN. DIST. FOR SPECIAL CONNECTION CHARGES. TEL : (310)699-7411 EXT. 2727
 DOUBLE SCALE

REVISION NO. 3 DATE 5-04-98
 PAGE 1 - REVISED INDEX MAP & RESTRICTED TO NO CONSTRUCTION BLOCK - TRACT 45546-07 LOT 16 (WAS LOT 15)
 PAGES 9, 10, 11, & 12 - REVISED LOT FRONTAGE DIMENSIONS, LOT LINES, LOT NO'S AND TRACT BOUNDARIES TO AGREE WITH FINAL TRACT MAPS 45546-04, -05 & 07
 APPROVED *Sauji G. Holie* 8/13/98
 DIRECTOR OF PUBLIC WORKS

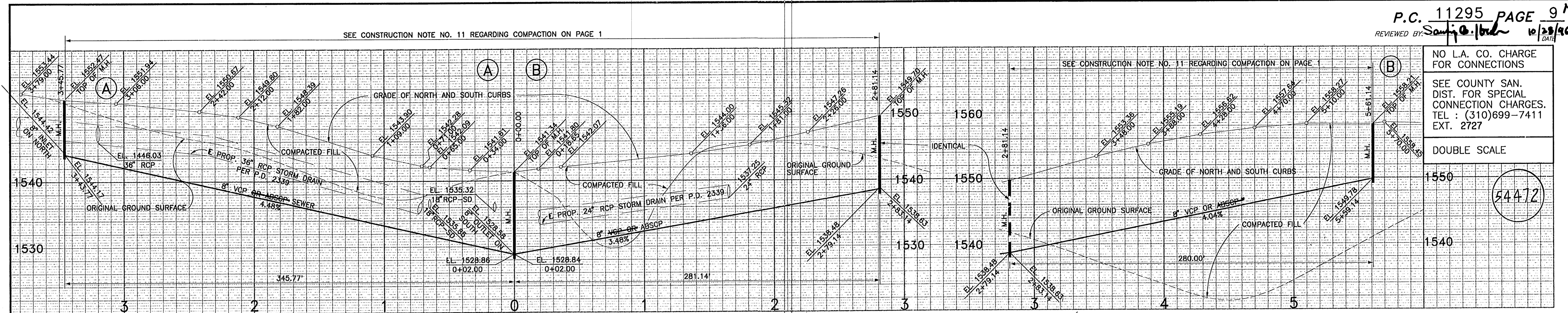
REVISION NO. 4 DATE 6/23/98
 PAGE 1 - REVISED INDEX MAP & RESTRICTED TO NO CONSTRUCTION BLOCK, (ADDED TRACTS 45546-09, -10 & 13, REVISED TRACTS 45546-11, -12, -15 REMOVED TRACTS 45546-14, -16, -17, -18, -19, -22 & 23 IN NO CONSTRUCTION BLOCK, JELIMINATED PAGES 9, 10, 11, 12, 13, 14, 15, 16, 17, 18, 19, 20, 21, 22, 23, 24, 25, 26, 27, 28, 29, 30, 31, 32, 33, 34, 35, 36, 37, 38, 39, 40, 41, 42, 43, 44, 45, 46, 47, 48, 49, 50, 51, 52, 53, 54, 55, 56, 57, 58, 59, 60, 61, 62, 63, 64, 65, 66, 67, 68, 69, 70, 71, 72, 73, 74, 75, 76, 77, 78, 79, 80, 81, 82, 83, 84, 85, 86, 87, 88, 89, 90, 91, 92, 93, 94, 95, 96, 97, 98, 99, 100)
 DIMENSIONS, LOT LINES, LOT NO'S AND TRACT BOUNDARIES TO AGREE WITH FINAL TRACT MAPS 45546-09, -10, -11, -12, 13 & 14.
 APPROVED *Sauji G. Holie* 8/13/98
 DIRECTOR OF PUBLIC WORKS



BACKWATER VALVES MAY BE REQUIRED FOR LOT NOS. 2, 3, 8, 9 & 10 OF TR. 45546-06



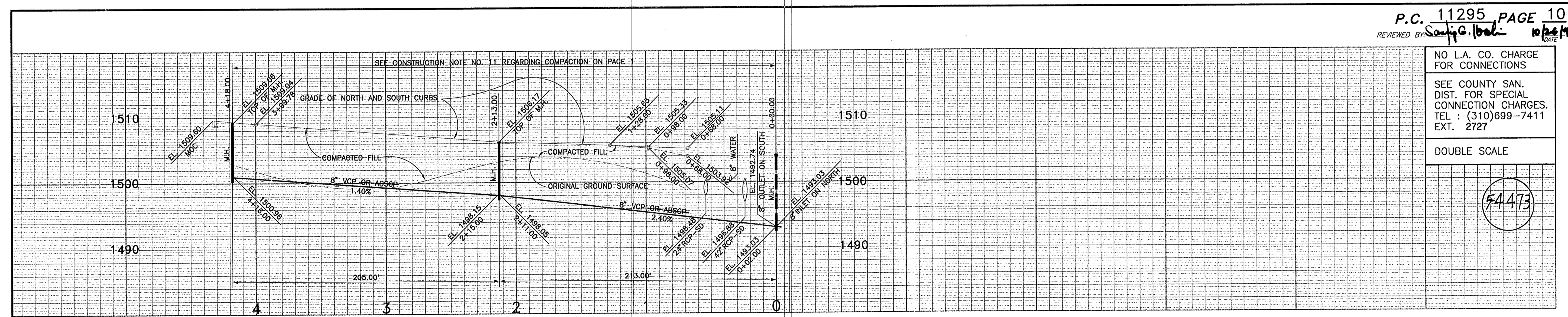
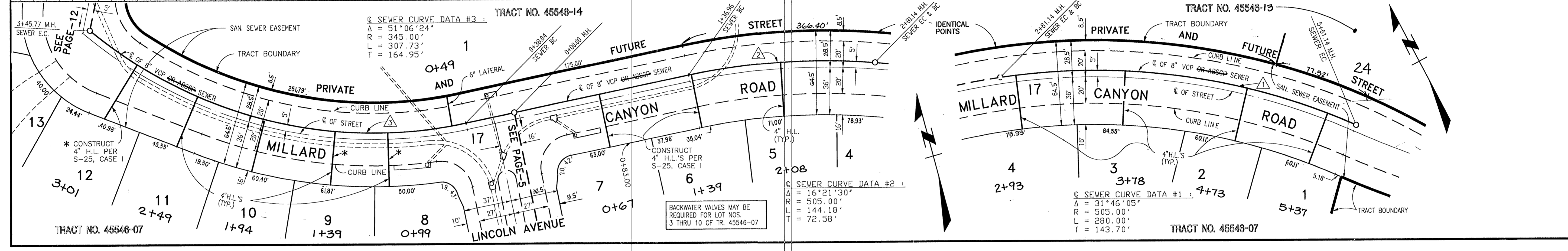
2



NO L.A. CO. CHARGE FOR CONNECTIONS
 SEE COUNTY SAN. DIST. FOR SPECIAL CONNECTION CHARGES. TEL : (310)699-7411 EXT. 2727

DOUBLE SCALE

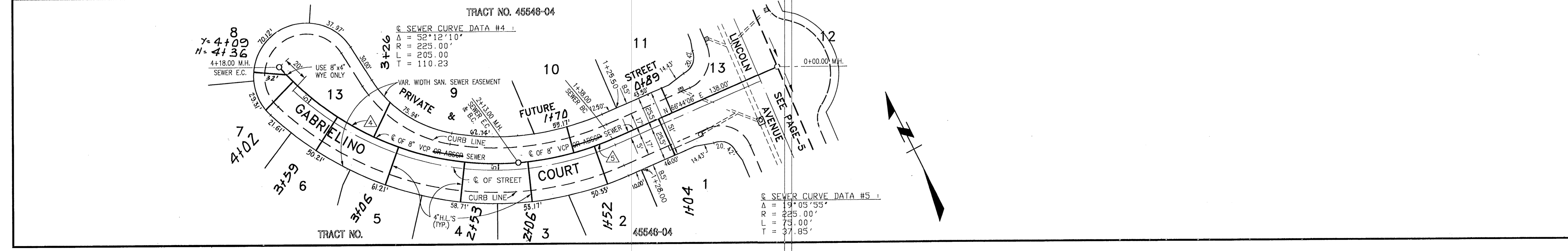
54472

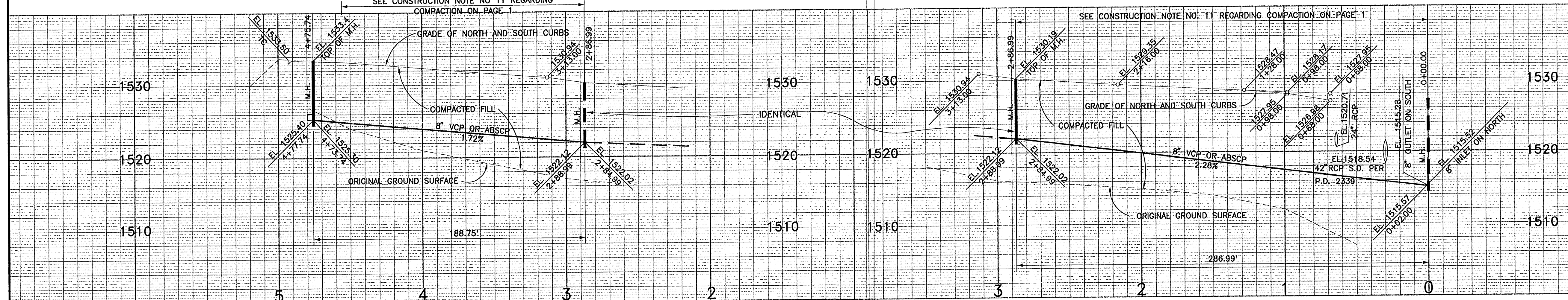


NO L.A. CO. CHARGE FOR CONNECTIONS
 SEE COUNTY SAN. DIST. FOR SPECIAL CONNECTION CHARGES. TEL : (310)699-7411 EXT. 2727

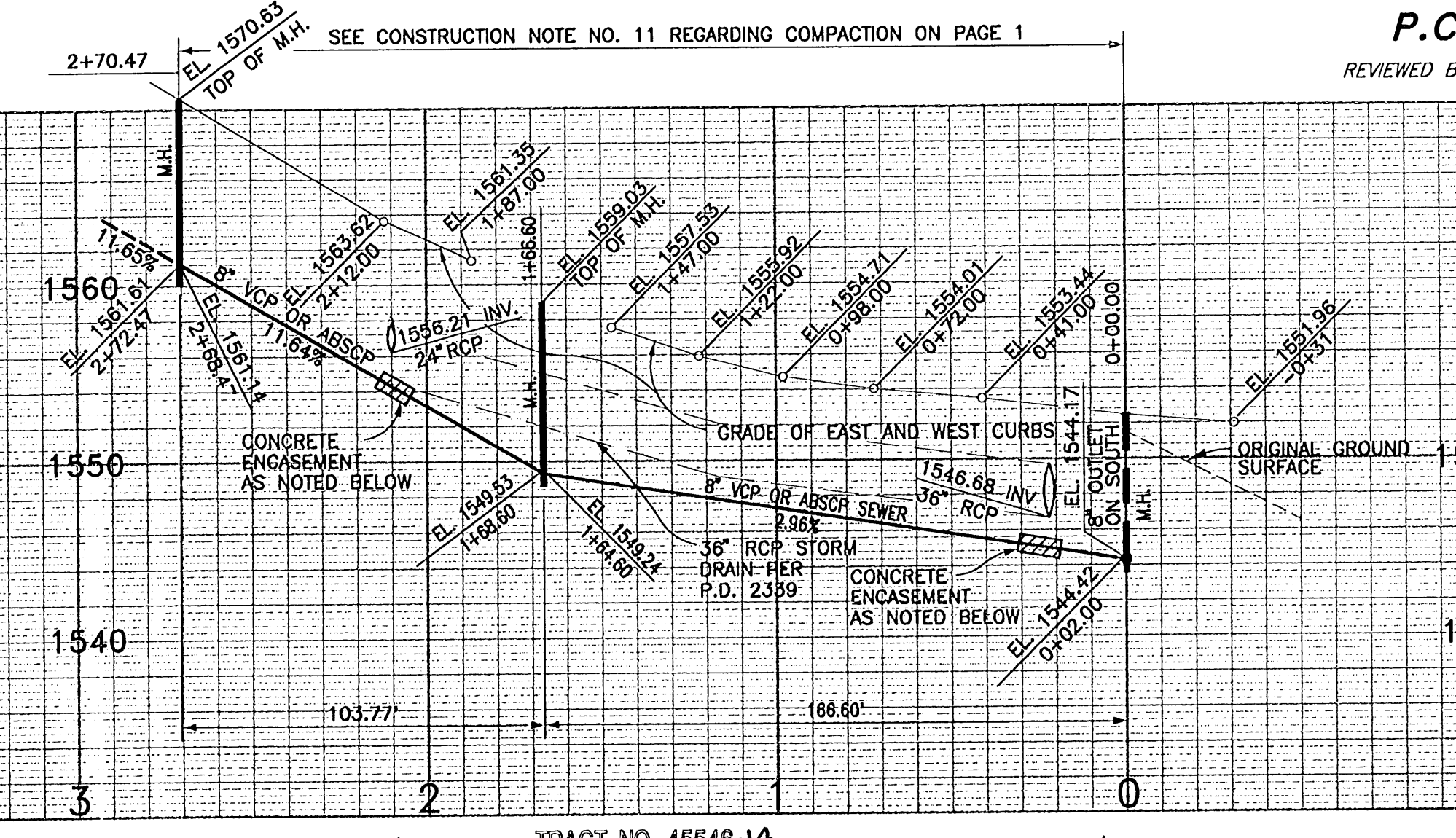
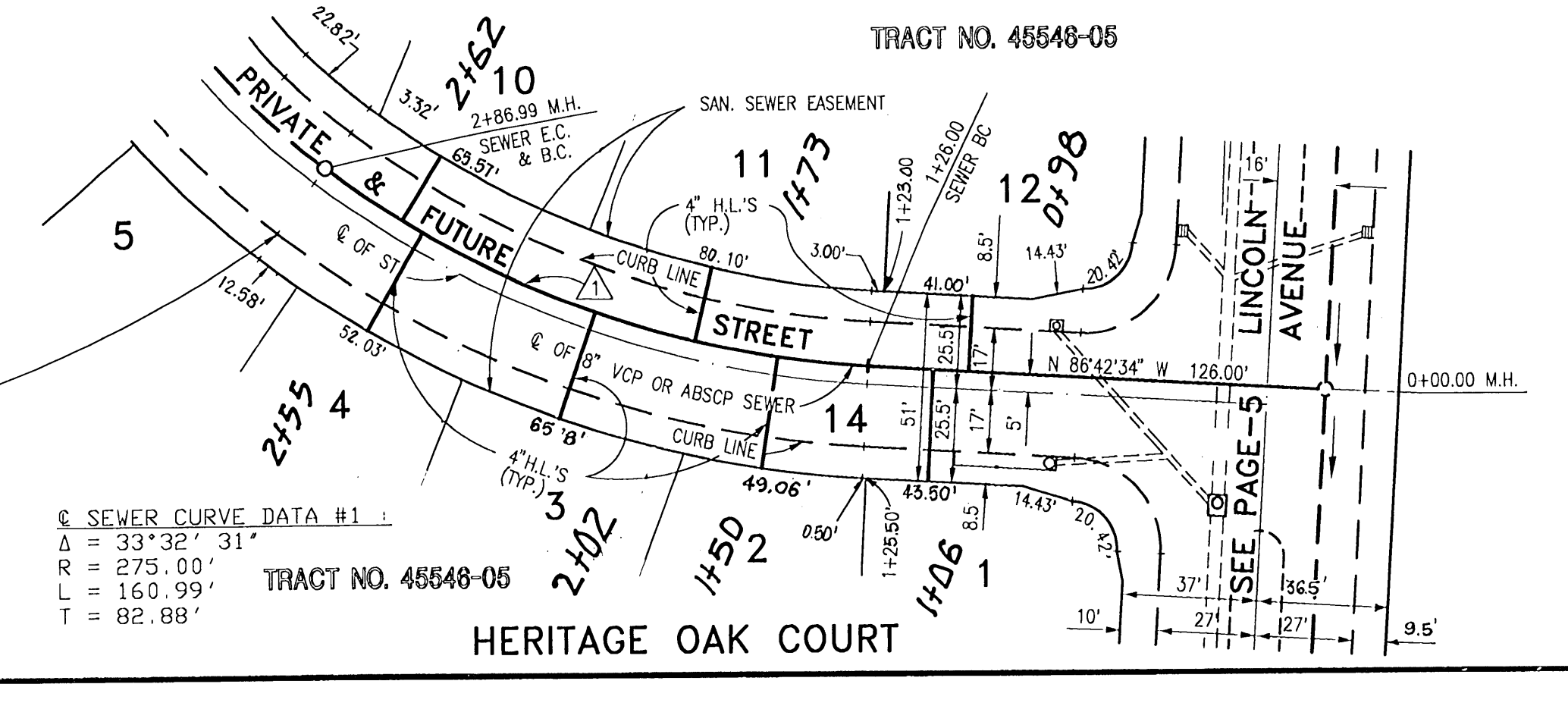
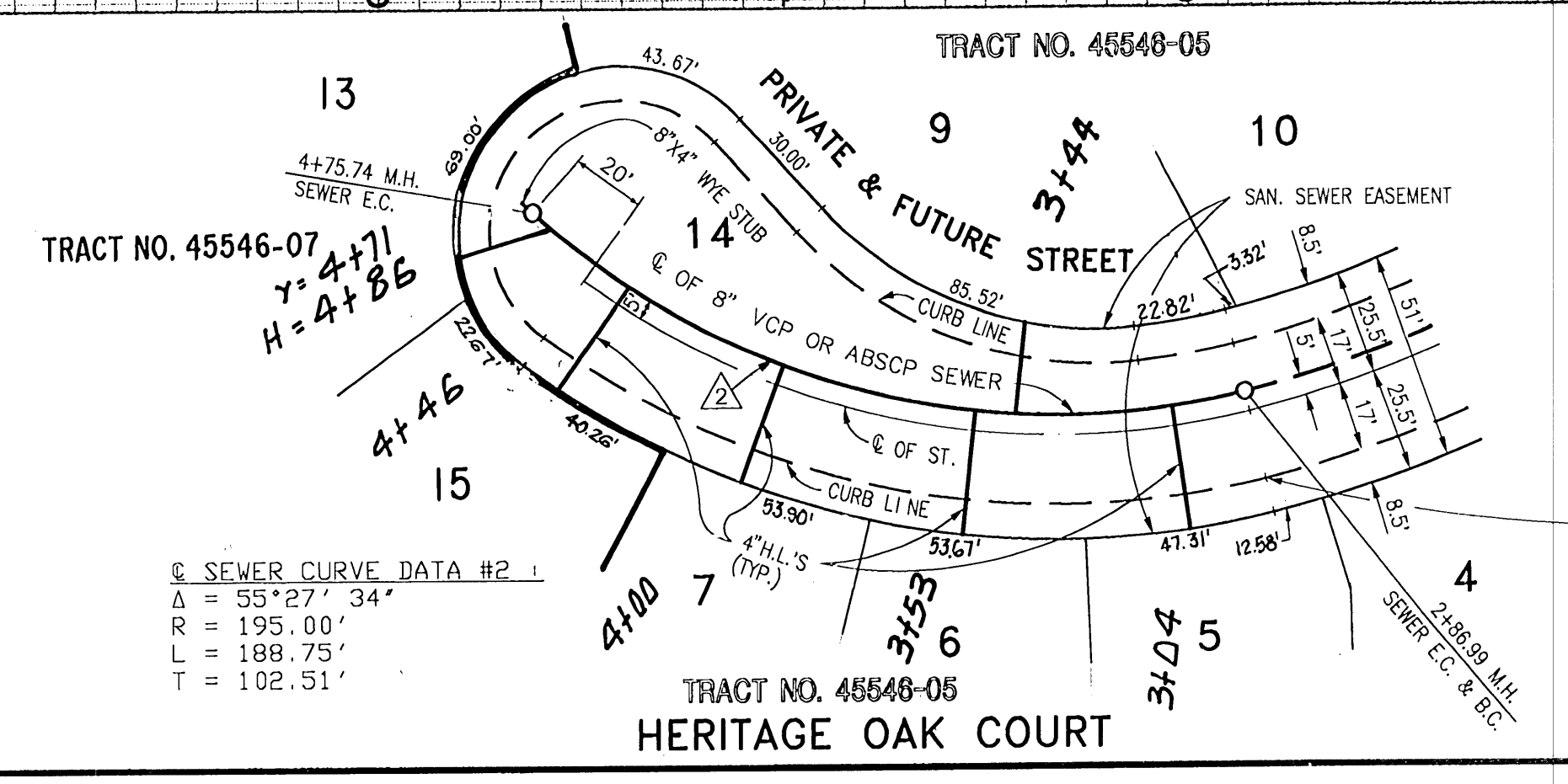
DOUBLE SCALE

54473

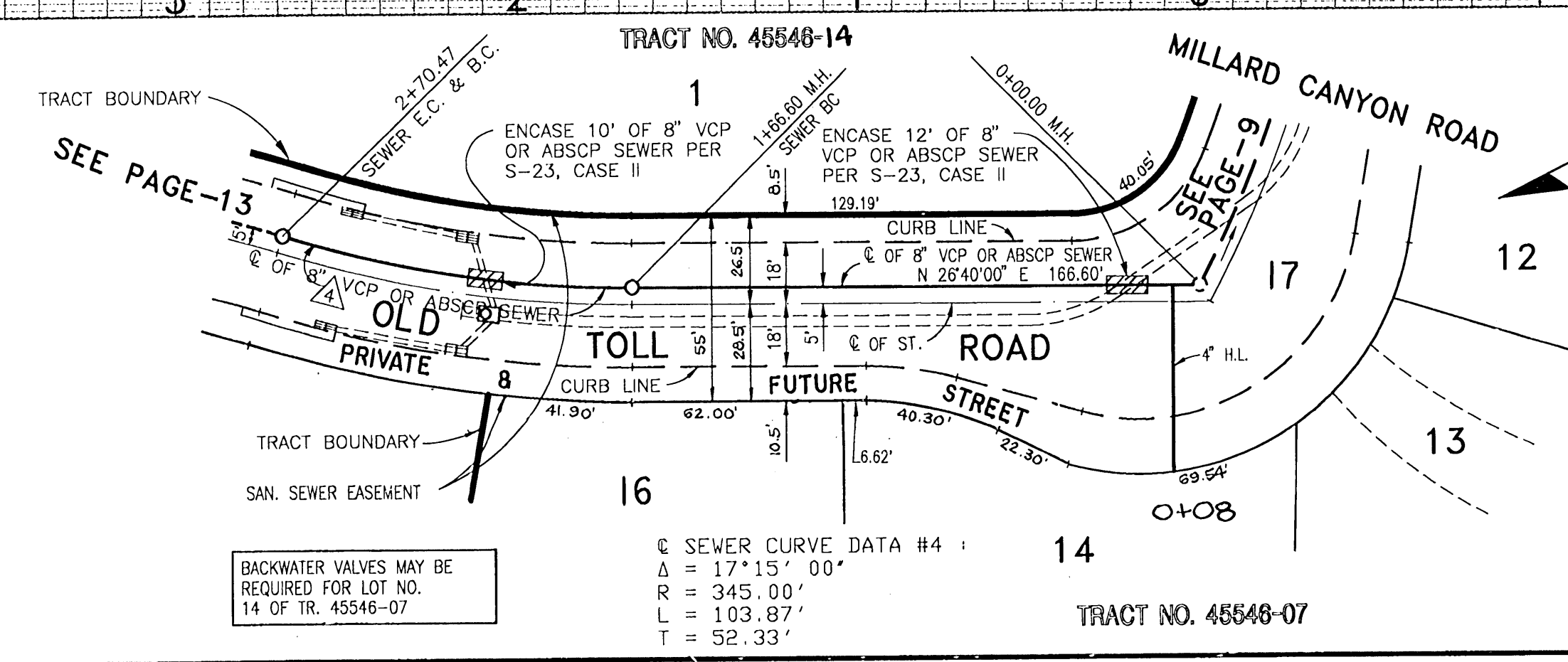




NO L.A. CO. CHARGE FOR CONNECTIONS
 SEE COUNTY SAN. DIST. FOR SPECIAL CONNECTION CHARGES. TEL : (310)699-7411 EXT. 2727
 DOUBLE SCALE
 54474



NO L.A. CO. CHARGE FOR CONNECTIONS
 SEE COUNTY SAN. DIST. FOR SPECIAL CONNECTION CHARGES. TEL : (310)699-7411 EXT. 2727
 DOUBLE SCALE
 54475

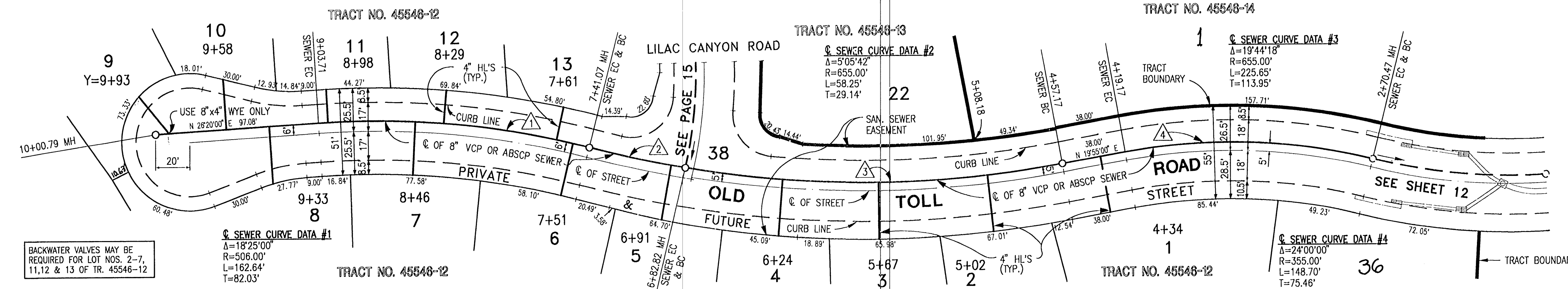
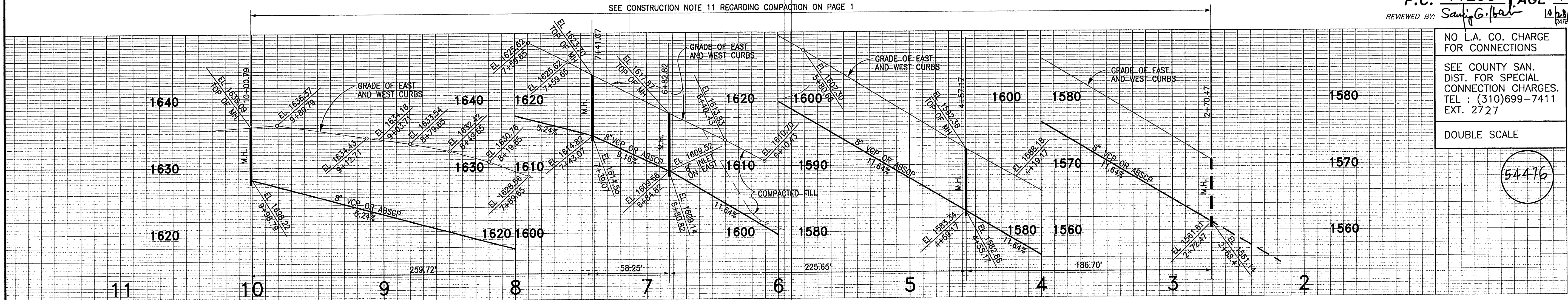


BACKWATER VALVES MAY BE REQUIRED FOR LOT NO. 14 OF TR. 45546-07

NO L.A. CO. CHARGE FOR CONNECTIONS
 SEE COUNTY SAN. DIST. FOR SPECIAL CONNECTION CHARGES.
 TEL : (310)699-7411 EXT. 2727

DOUBLE SCALE

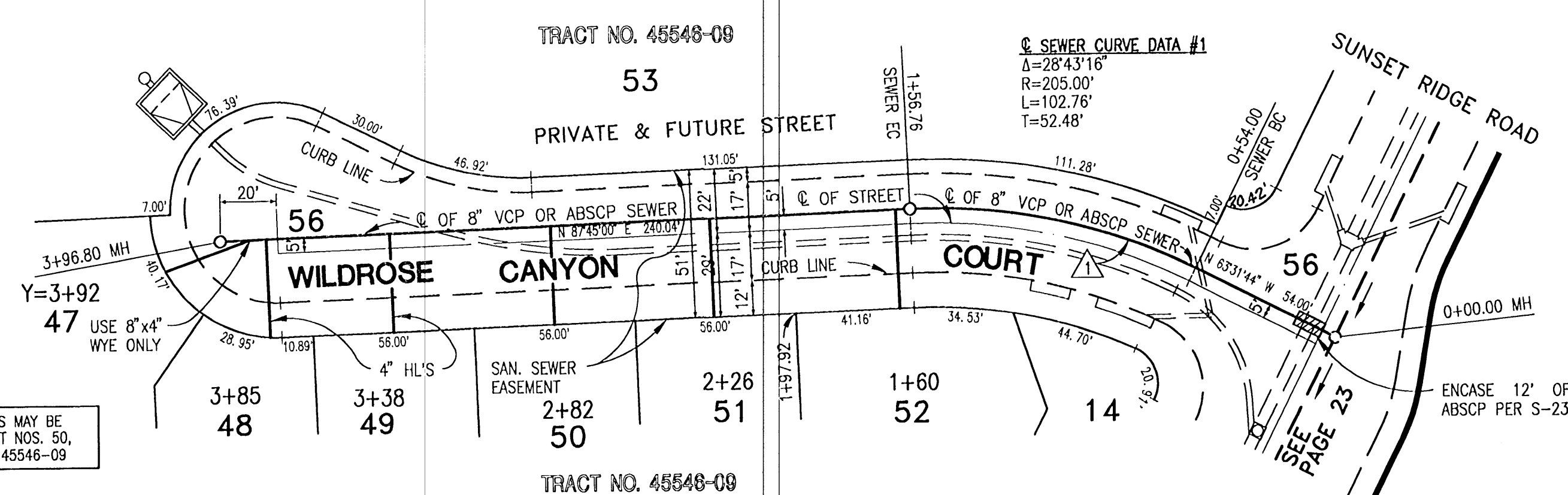
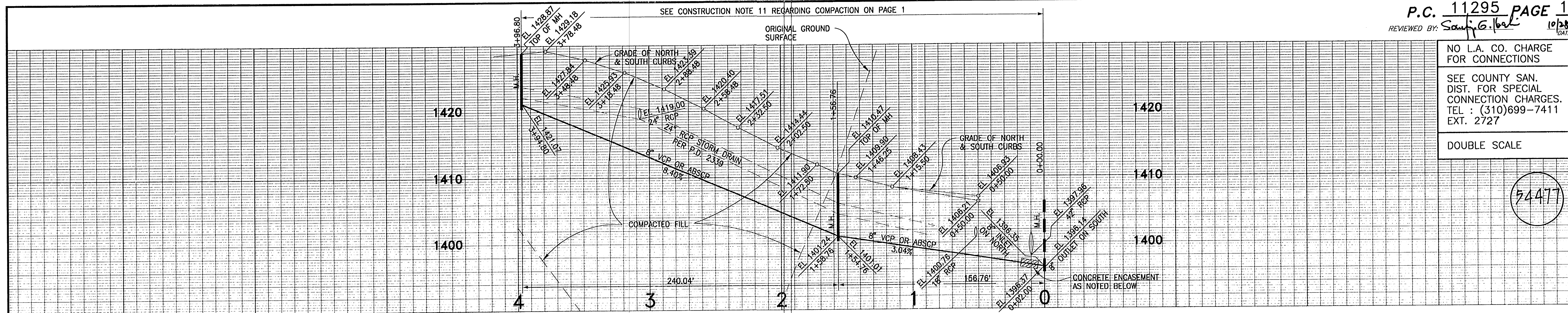
54476



NO L.A. CO. CHARGE FOR CONNECTIONS
 SEE COUNTY SAN. DIST. FOR SPECIAL CONNECTION CHARGES.
 TEL : (310)699-7411 EXT. 2727

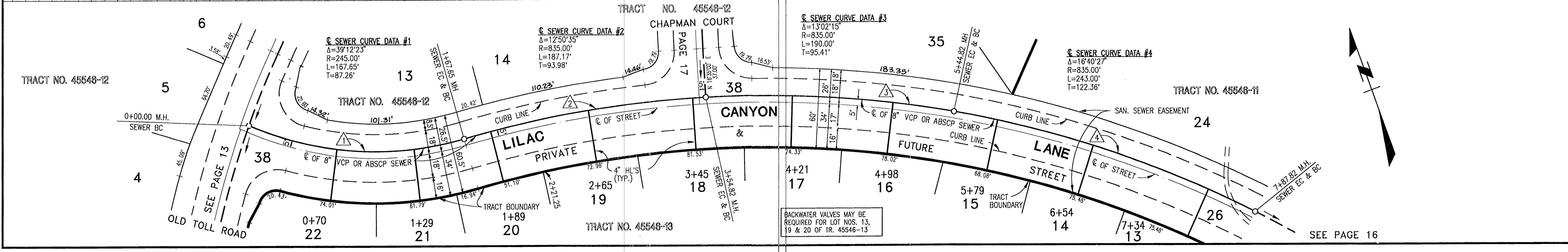
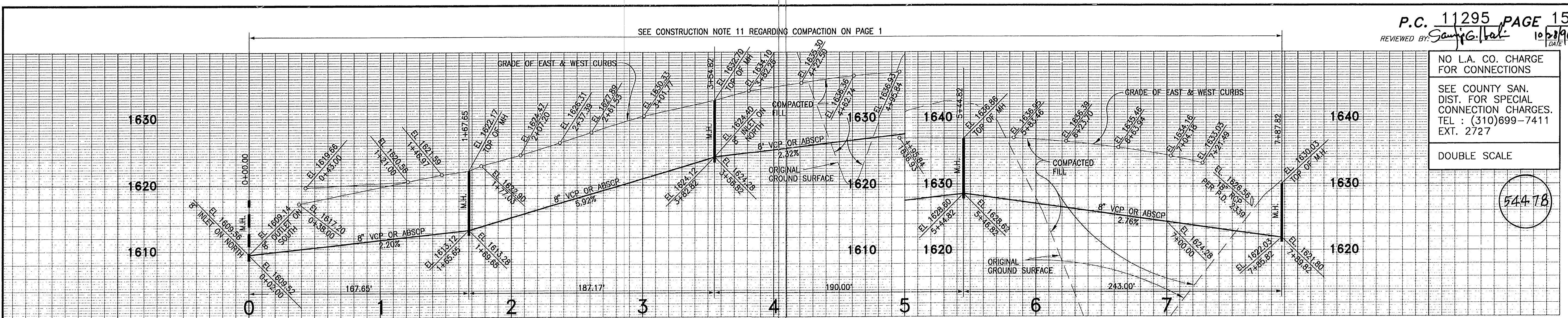
DOUBLE SCALE

54477



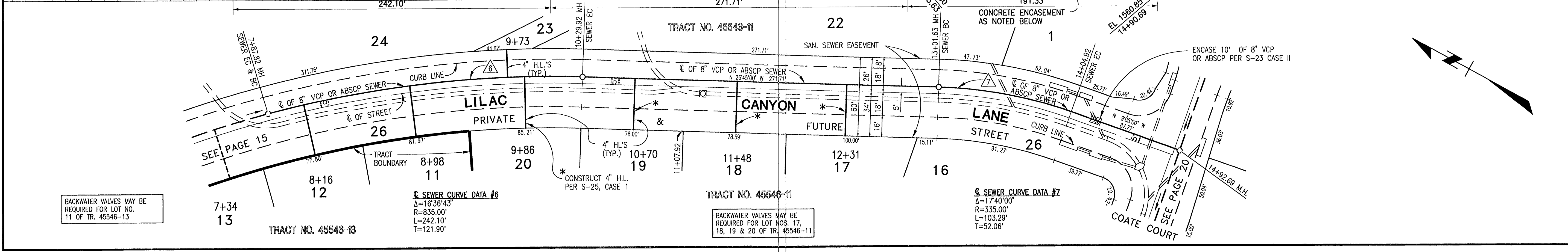
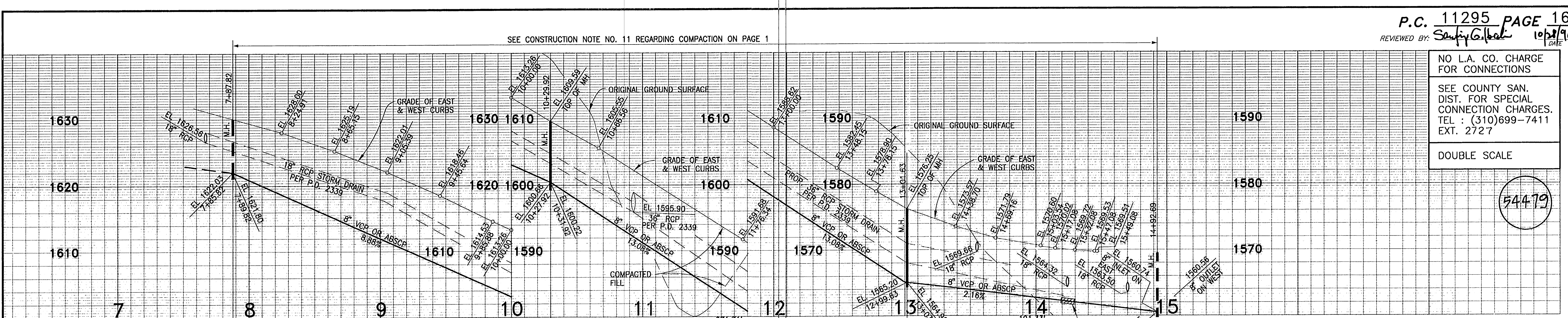
NO L.A. CO. CHARGE FOR CONNECTIONS
 SEE COUNTY SAN. DIST. FOR SPECIAL CONNECTION CHARGES. TEL : (310)699-7411 EXT. 2727
 DOUBLE SCALE

54478



NO L.A. CO. CHARGE FOR CONNECTIONS
 SEE COUNTY SAN. DIST. FOR SPECIAL CONNECTION CHARGES. TEL : (310)699-7411 EXT. 2727
 DOUBLE SCALE

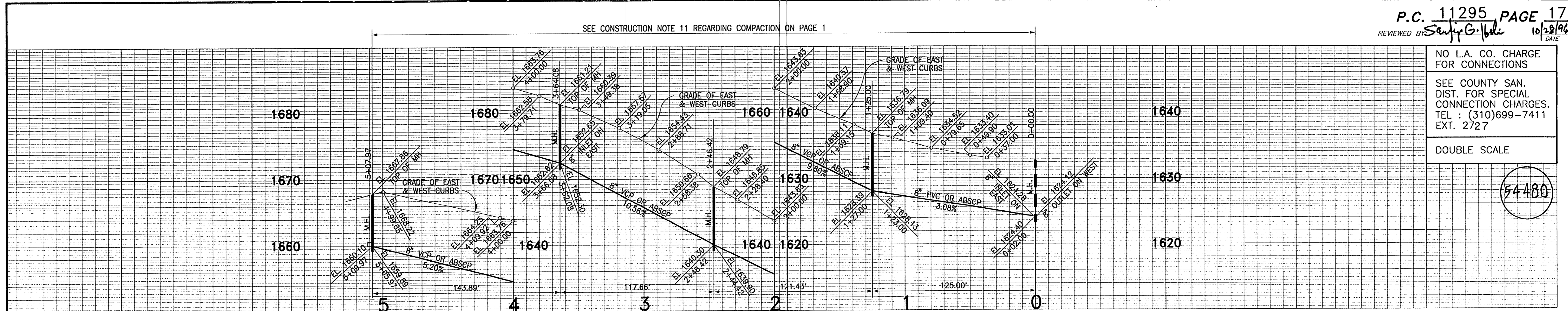
54479



BC 1501 09

NO L.A. CO. CHARGE FOR CONNECTIONS
 SEE COUNTY SAN. DIST. FOR SPECIAL CONNECTION CHARGES. TEL : (310)699-7411 EXT. 2727
 DOUBLE SCALE

54480



SEWER CURVE DATA #3
 $\Delta = 14'48.57"$
 $R = 455.00'$
 $L = 117.66'$
 $T = 59.16'$

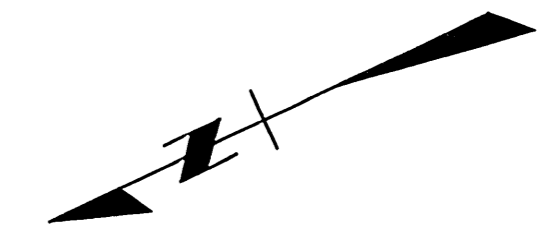
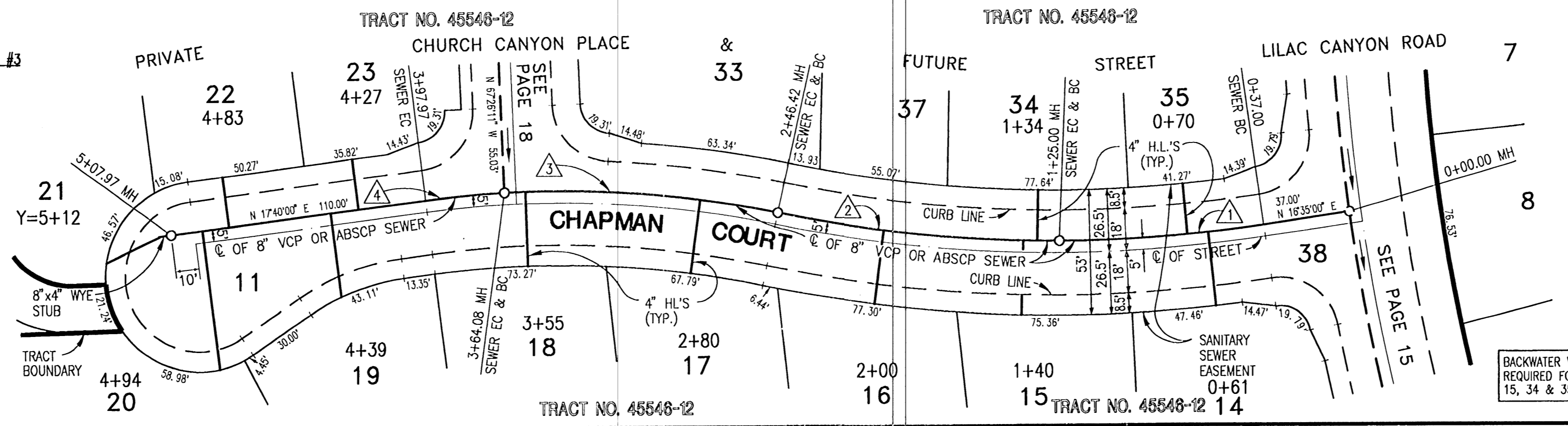
SEWER CURVE DATA #4
 $\Delta = 4'16.03"$
 $R = 455.00'$
 $L = 33.89'$
 $T = 16.95'$

BACKWATER VALVES MAY BE REQUIRED FOR LOT NOS. 16, 17 & 23 OF TR. 45546-12

SEWER CURVE DATA #1
 $\Delta = 8'28.26"$
 $R = 595.00'$
 $L = 88.00'$
 $T = 44.08'$

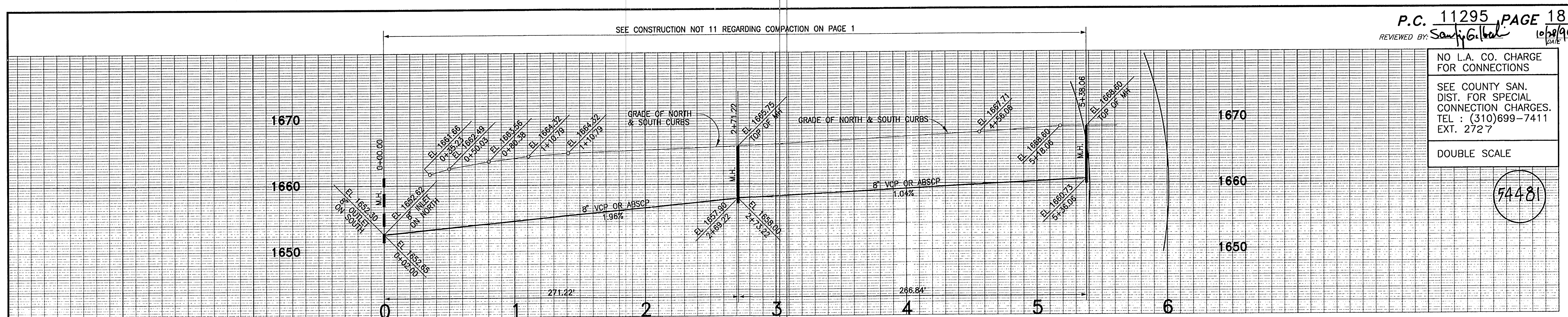
SEWER CURVE DATA #2
 $\Delta = 11'41.34"$
 $R = 595.00'$
 $L = 121.43'$
 $T = 60.92'$

BACKWATER VALVES MAY BE REQUIRED FOR LOT NOS. 14, 15, 34 & 35 OF TR. 45546-12



NO L.A. CO. CHARGE FOR CONNECTIONS
 SEE COUNTY SAN. DIST. FOR SPECIAL CONNECTION CHARGES. TEL : (310)699-7411 EXT. 2727
 DOUBLE SCALE

54481

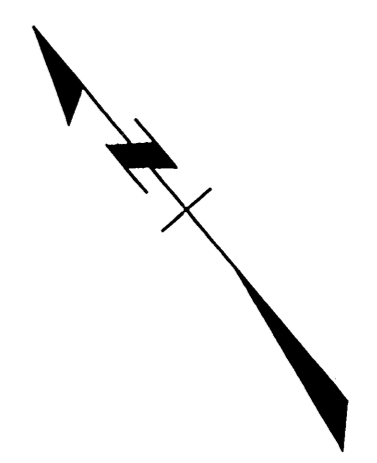
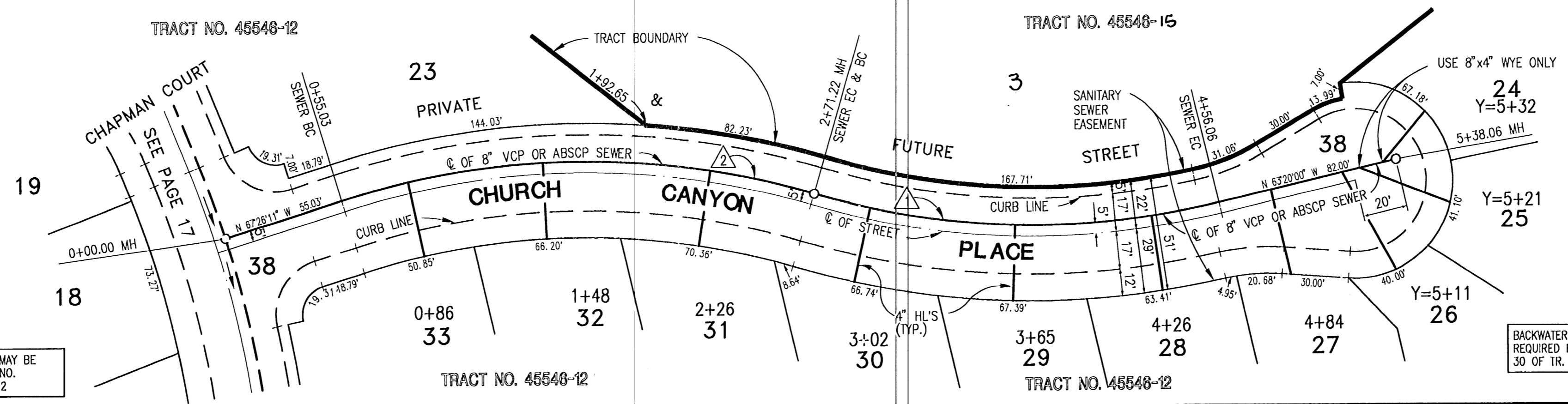


SEWER CURVE DATA #2
 $\Delta = 33'56.11"$
 $R = 365.00'$
 $L = 218.19'$
 $T = 111.37'$

BACKWATER VALVES MAY BE REQUIRED FOR LOT NO. 33 OF TR. 45546-12

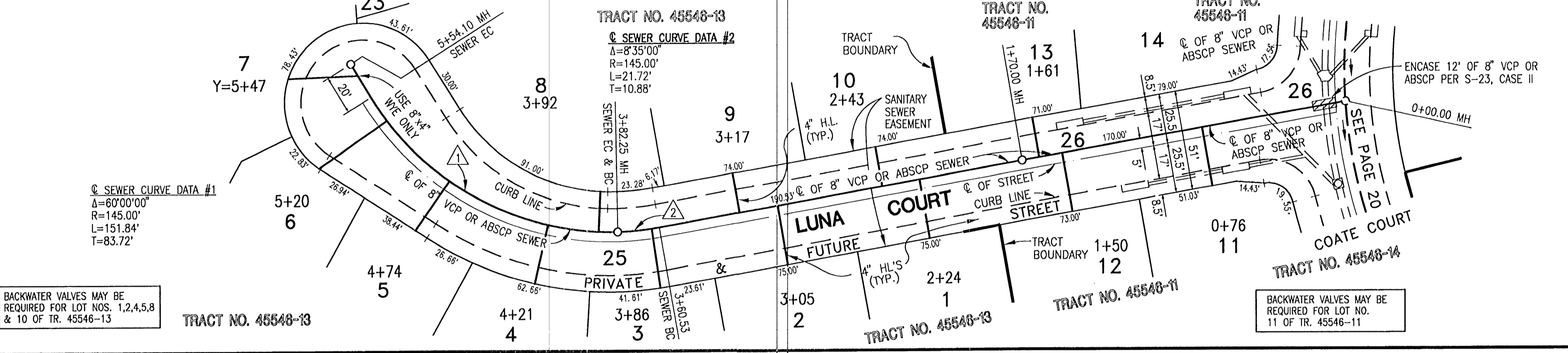
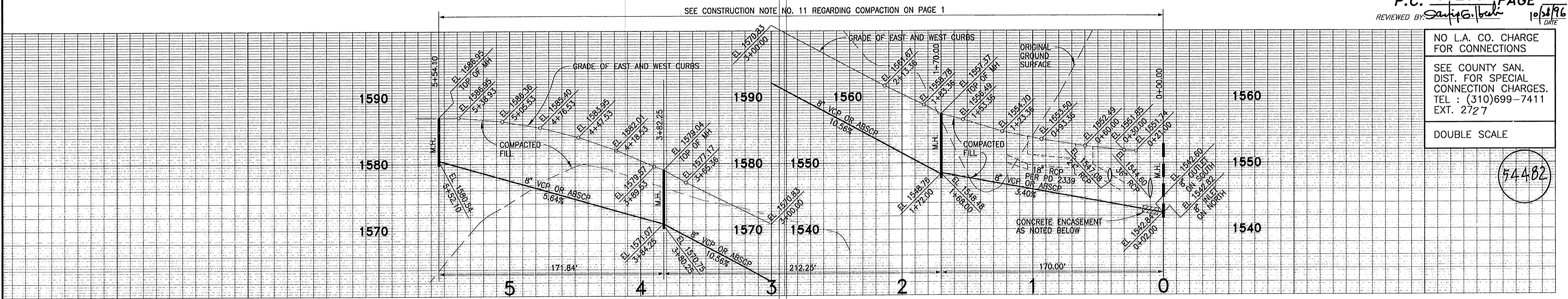
SEWER CURVE DATA #1
 $\Delta = 29'50.00"$
 $R = 365.00'$
 $L = 184.84'$
 $T = 94.57'$

BACKWATER VALVES MAY BE REQUIRED FOR LOT NO. 30 OF TR. 45546-12



NO L.A. CO. CHARGE FOR CONNECTIONS
 SEE COUNTY SAN. DIST. FOR SPECIAL CONNECTION CHARGES. TEL : (310)699-7411 EXT. 2727
 DOUBLE SCALE

54482

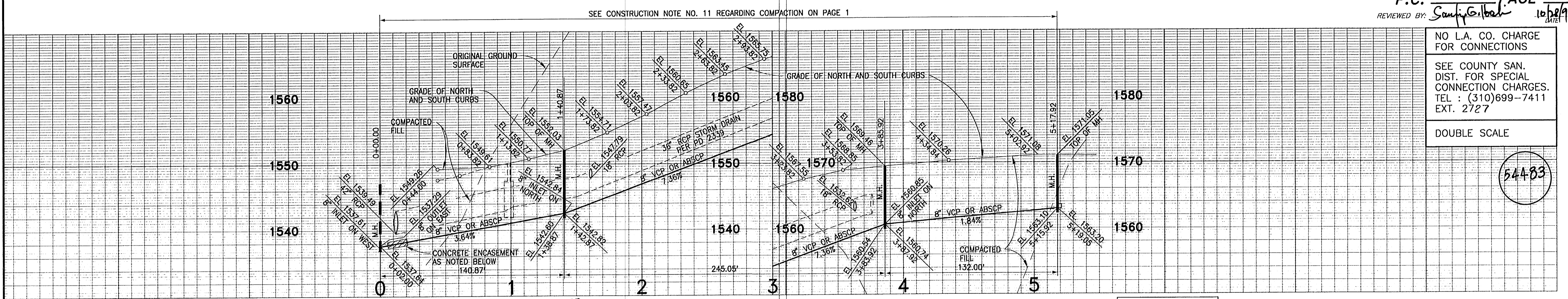


BACKWATER VALVES MAY BE REQUIRED FOR LOT NOS. 1,2,4,5,8 & 10 OF TR. 45548-13

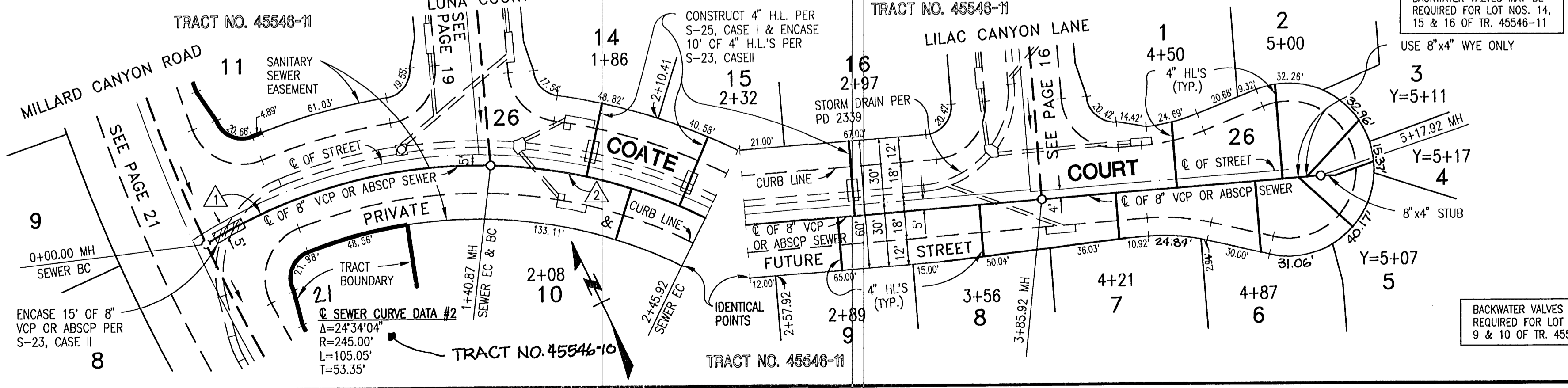
BACKWATER VALVES MAY BE REQUIRED FOR LOT NO. 11 OF TR. 45548-11

NO L.A. CO. CHARGE FOR CONNECTIONS
 SEE COUNTY SAN. DIST. FOR SPECIAL CONNECTION CHARGES. TEL : (310)699-7411 EXT. 2727
 DOUBLE SCALE

54483



SEWER CURVE DATA #1
 Δ=32°58'37"
 R=245.00'
 L=140.00'
 T=72.44'



ENCASE 15' OF 8" VCP OR ABSCP PER S-23, CASE II

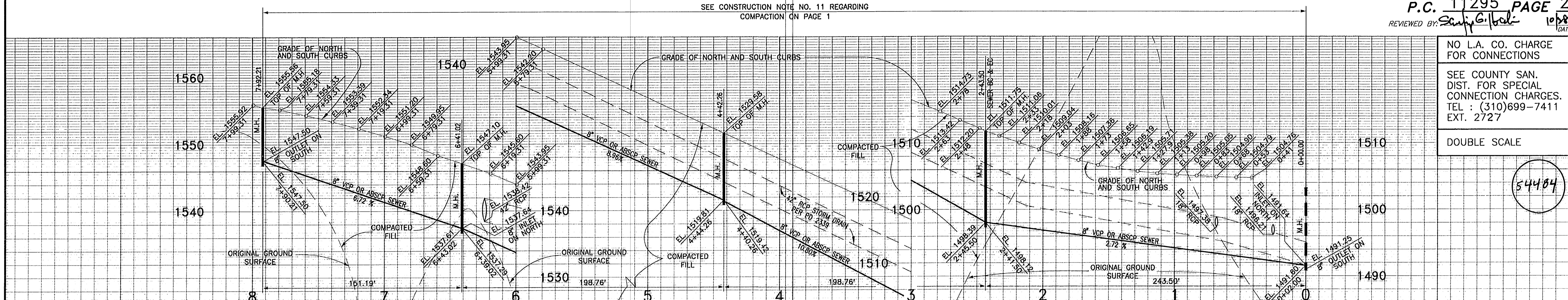
BACKWATER VALVES MAY BE REQUIRED FOR LOT NOS. 9 & 10 OF TR. 45548-11

SEE CONSTRUCTION NOTE NO. 11 REGARDING
COMPACTION ON PAGE 1

P.C. 11295 PAGE 21
REVIEWED BY: *Sandy Gilbert* 10/21/96
DATE

NO L.A. CO. CHARGE
FOR CONNECTIONS
SEE COUNTY SAN.
DIST. FOR SPECIAL
CONNECTION CHARGES.
TEL : (310)699-7411
EXT. 2727
DOUBLE SCALE

54484



SEWER CURVE DATA #4
Δ = 11°28'24"
R = 755.00'
L = 151.19'
T = 75.85'

SEWER CURVE DATA #3
Δ = 15°05'01"
R = 755.00'
L = 198.76'
T = 99.96'

SEWER CURVE DATA #2
Δ = 15°05'01"
R = 755.00'
L = 198.76'
T = 99.96'

SEWER CURVE DATA #1
Δ = 34°26'53"
R = 405.00'
L = 243.50'
T = 125.56'

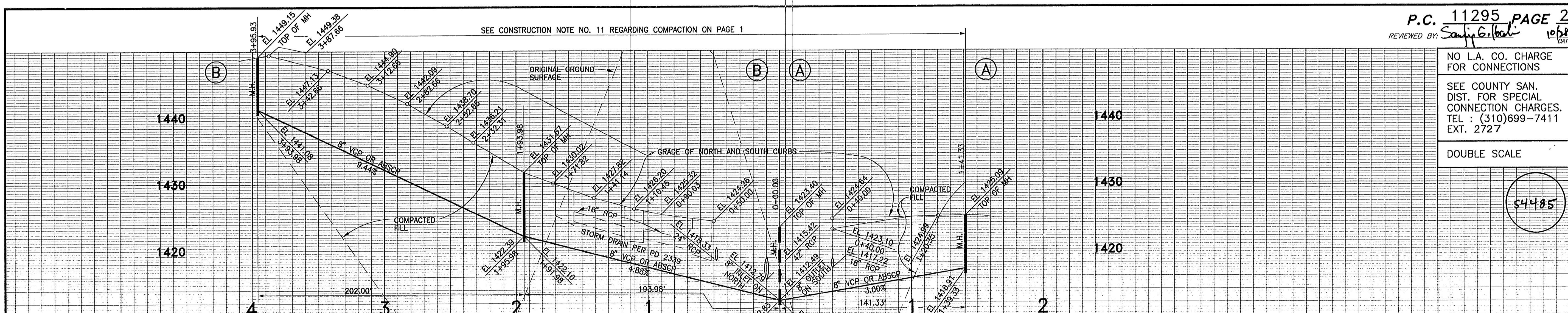
BACKWATER VALVES MAY BE
REQUIRED FOR LOT NOS. 5, 6,
8, 9, 10 & 12 OF TR. 45548-09

SEE CONSTRUCTION NOTE NO. 11 REGARDING
COMPACTION ON PAGE 1

P.C. 11295 PAGE 22
REVIEWED BY: *Sandy Gilbert* 10/21/96
DATE

NO L.A. CO. CHARGE
FOR CONNECTIONS
SEE COUNTY SAN.
DIST. FOR SPECIAL
CONNECTION CHARGES.
TEL : (310)699-7411
EXT. 2727
DOUBLE SCALE

54485



BACKWATER VALVES MAY BE
REQUIRED FOR LOT NOS. 33, 34, 35,
36, 43, 44 & 46 OF TR. 45548-09

SEWER CURVE DATA #2
Δ = 26°28'16"
R = 225.00'
L = 103.95'
T = 52.92'

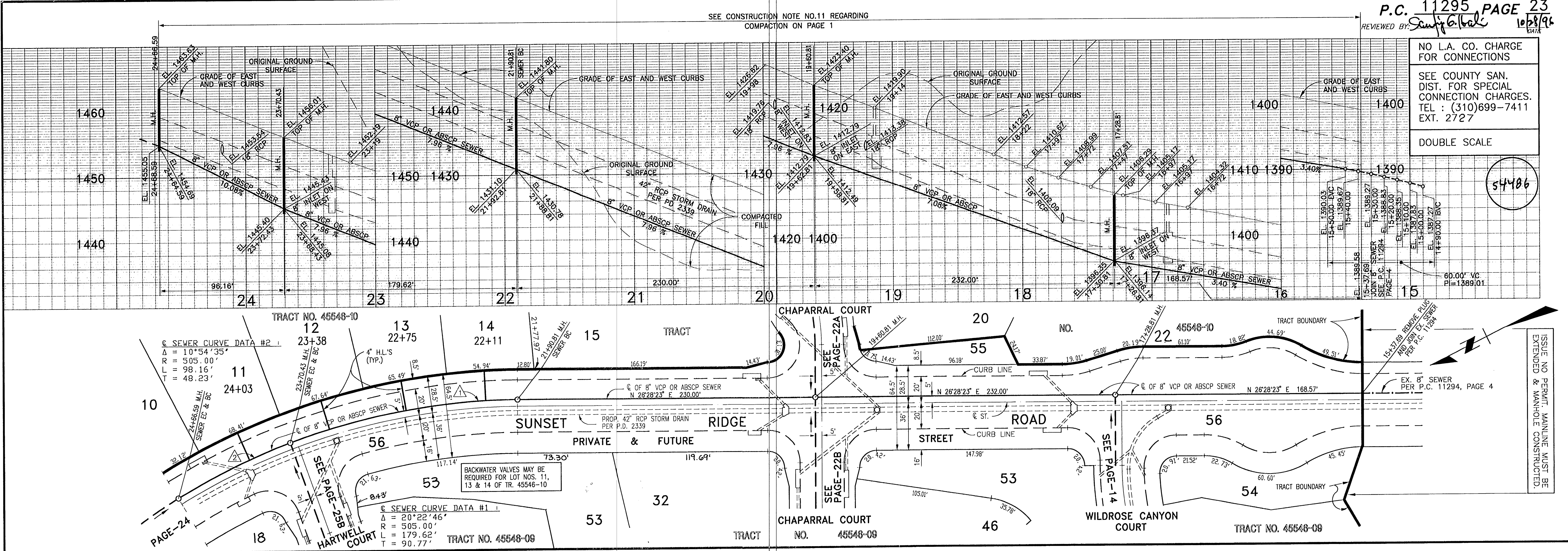
SEWER CURVE DATA #1
Δ = 40°02'26"
R = 145.00'
L = 101.33'
T = 52.83'

NO L.A. CO. CHARGE FOR CONNECTIONS
SEE COUNTY SAN. DIST. FOR SPECIAL CONNECTION CHARGES. TEL : (310)699-7411 EXT. 2727

DOUBLE SCALE

54486

SEE CONSTRUCTION NOTE NO.11 REGARDING COMPACTION ON PAGE 1



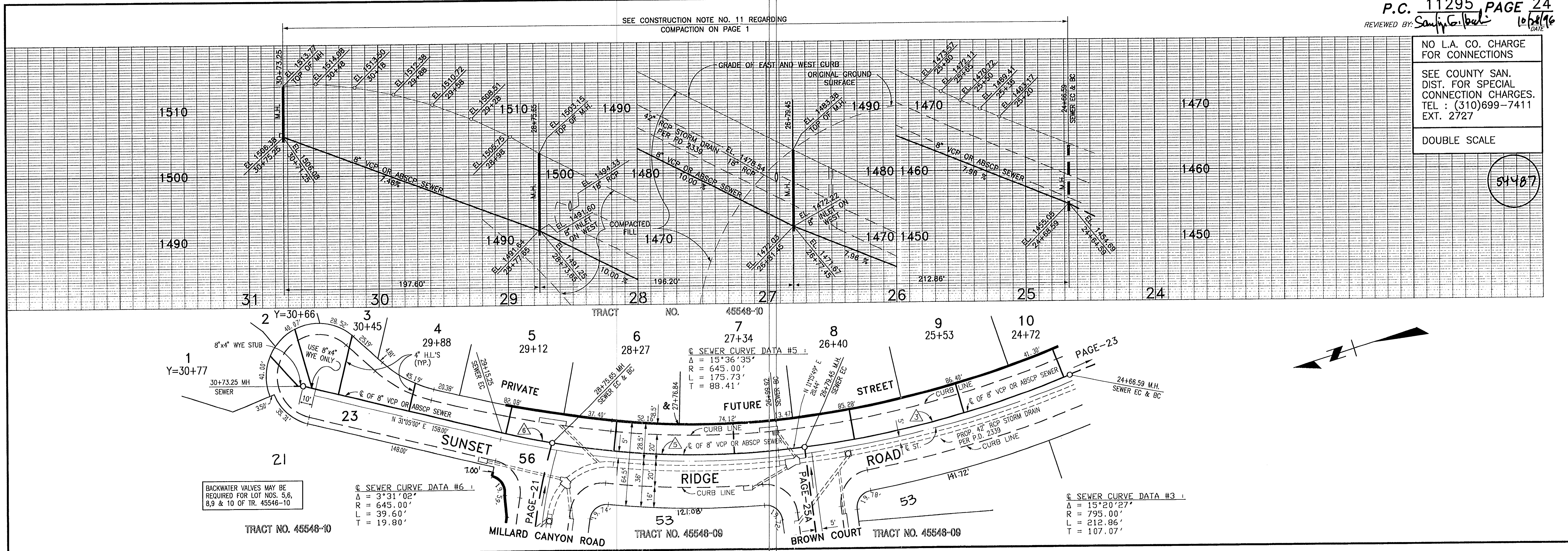
ISSUE NO PERMIT. MAINLINE MUST BE EXTENDED & MANHOLE CONSTRUCTED.

NO L.A. CO. CHARGE FOR CONNECTIONS
SEE COUNTY SAN. DIST. FOR SPECIAL CONNECTION CHARGES. TEL : (310)699-7411 EXT. 2727

DOUBLE SCALE

54487

SEE CONSTRUCTION NOTE NO. 11 REGARDING COMPACTION ON PAGE 1



BACKWATER VALVES MAY BE REQUIRED FOR LOT NOS. 3, 6, 8, 9 & 10 OF TR. 45548-10

SEWER CURVE DATA #6
Δ = 3°31'02"
R = 645.00'
L = 39.60'
T = 19.80'

SEWER CURVE DATA #3
Δ = 15°20'27"
R = 795.00'
L = 212.86'
T = 107.07'

NO L.A. CO. CHARGE FOR CONNECTIONS
SEE COUNTY SAN. DIST. FOR SPECIAL CONNECTION CHARGES. TEL : (310)699-7411 EXT. 2727
DOUBLE SCALE

54488

