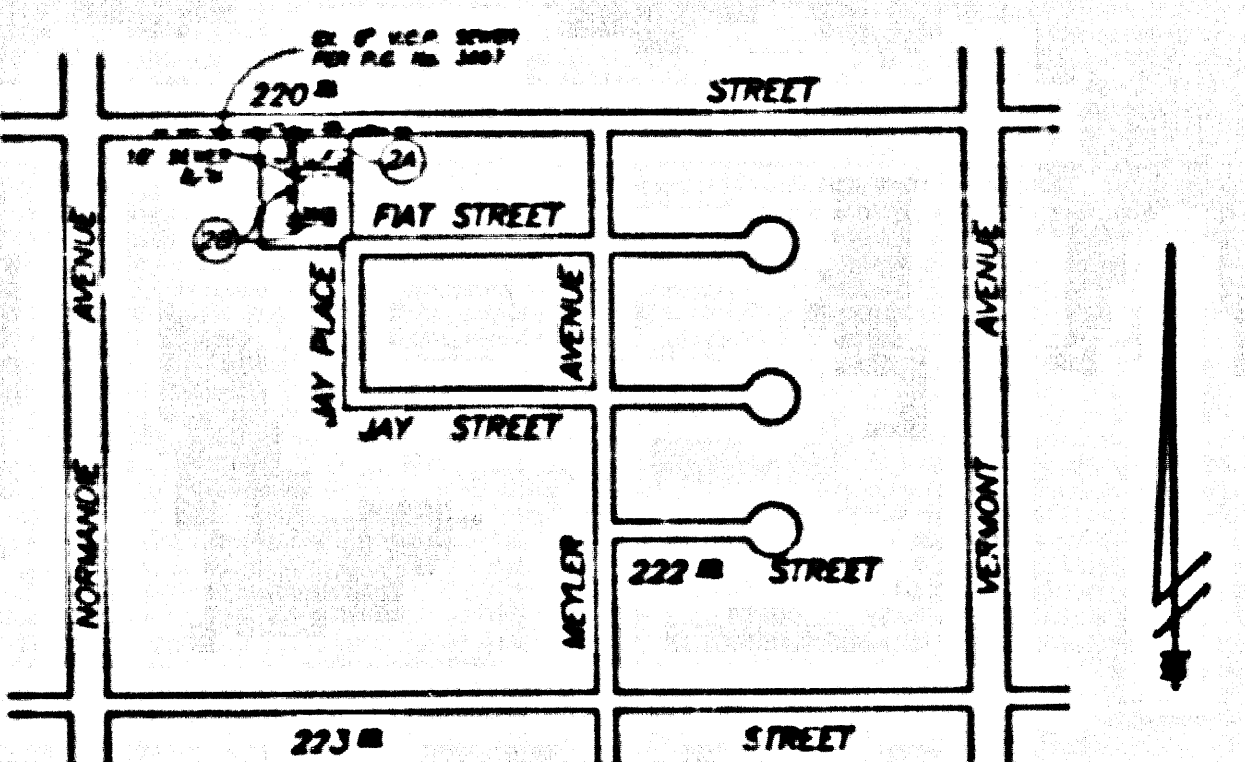


S.M. # 07 2081 CLEV. 66.814  
 LEAD AND SPIRE IN WEST CORNER OF NEIGHBORHOOD  
 AVENUE, 30 FEET WEST OF CENTERLINE, ON  
 CENTERLINE PRODUCTION OF 221st STREET  
 GARDENA QUAD 19 94

- CONSTRUCTION NOTES CONT'D :**
14. FULL COMPLIANCE WITH PART IV OF THE SPECIAL PROVISIONS IS REQUIRED FOR THE INSTALLATION OF A.S.S. COMPOSITE PIPE.
  15. MANHOLE ENTRY STOP GASKETS AND CLAMPS ARE REQUIRED FOR THE CONNECTION OF A.S.S. COMPOSITE PIPE TO MANHOLE STRUCTURES.
  16. A.S.S. SOLID WALL PIPE MUST BE USED FOR WYE AND HOUSE LATERAL CONNECTIONS TO A.S.S. COMPOSITE MANHOLE SEWER PIPE.
  17. A.S.S. COMPOSITE PIPE SHALL BE SETTED IN CONFORMANCE WITH THE TABLE IN SECTION 8-3.1 OF PART IV OF THE SPECIAL PROVISIONS.
  18. THREE DEGREE DEFLECTION COUPLERS ARE REQUIRED FOR SPANS OF CURVATURE LESS THAN 200 FEET WHEN USING A.S.S. COMPOSITE PIPE.
  19. NO CONNECTIONS FOR DISPOSAL OF INDUSTRIAL WASTE IS ALLOWED IF A.S.S. COMPOSITE PIPE IS USED.
  20. SEWER LINE CURVATURE SHALL NOT BE ACHIEVED BY PULLING OF JOINTS OR BENDING PIPE ENDS WHEN USING PLASTIC PIPE INCLUDING A.S.S. COMPOSITE PIPE.
  21. ALL WYES AND/OR HOUSE LATERALS ARE TO BE LOCATED AT LEAST FIVE FEET APART AND WHEN POSSIBLE NOT CLOSER THAN FIVE FEET TO ANY MANHOLE.
  22. A.S.S. SOLID WALL PIPE IS NOT ACCEPTABLE FOR USE AS MANHOLE SEWER.
  23. ONLY WYE BRANCHES ARE TO BE USED FOR CONNECTION TO A.S.S. COMPOSITE MANHOLE SEWER PIPE.

**GENERAL NOTES**

1. ALL CONSTRUCTION SHALL BE IN ACCORDANCE WITH THE SPECIAL PROVISIONS OF THE STANDARD SPECIFICATIONS FOR PUBLIC WORKS, EDITION 1983, AS AMENDED, AND THE SPECIAL PROVISIONS OF THE STANDARD SPECIFICATIONS FOR PUBLIC WORKS, EDITION 1983, AS AMENDED, AND THE SPECIAL PROVISIONS OF THE STANDARD SPECIFICATIONS FOR PUBLIC WORKS, EDITION 1983, AS AMENDED.



**INDEX MAP**  
 P.C. No. 11308 TRACT No. 51517  
 THOMAS : 88-F-8 SCALE: 1"=800'  
 NOTE: NUMBER IN CIRCLE INDICATES PAGE NUMBER

NO CONNECTION FOR THE DISPOSAL OF INDUSTRIAL WASTES SHALL BE MADE TO SEWERS EXCEPT ON THESE DRAWINGS UNLESS A PERMIT FOR INDUSTRIAL WASTEWATER DISCHARGE HAS BEEN ISSUED BY THE SANITATION DISTRICTS FOR SAID CONNECTION.

BEFORE BREAKING INTO OR CONSTRUCTION ON A COUNTY SANITATION DISTRICT SEWER AND PRIOR TO FINAL ACCEPTANCE OF THE PROJECT, A SANITATION DISTRICT INSPECTOR SHALL BE NOTIFIED BY PHONE AT (213) 886-1101 SO THAT REQUIRED INSPECTIONS CAN BE MADE.

**SANITARY SEWERS** PAGE 1

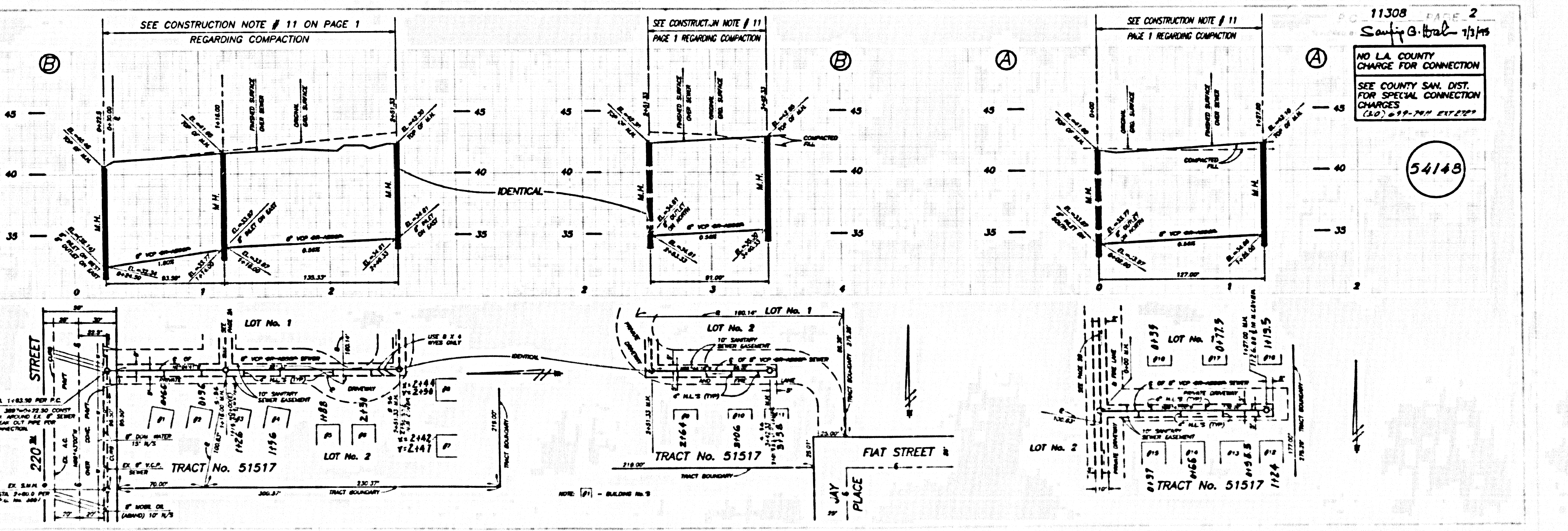
TRACT No. 51517  
 PRIVATE CONTRACT NO. 11308  
 INDEX 1705  
 1 SHEET OF 2 PAGES

MAY 85 54147  
 FOR ENGINEERING, INC.  
 220 S. PACIFIC COAST HWY. STE. 103  
 REDWOOD BEACH, CA 90277  
 (310) 378-0041  
 CARSON 13

**CONSTRUCTION NOTES**

1. ALL CONSTRUCTION SHALL BE IN ACCORDANCE WITH THE SPECIAL PROVISIONS OF THE STANDARD SPECIFICATIONS FOR PUBLIC WORKS, EDITION 1983, AS AMENDED, AND THE SPECIAL PROVISIONS OF THE STANDARD SPECIFICATIONS FOR PUBLIC WORKS, EDITION 1983, AS AMENDED.

COUNTY OF LOS ANGELES, CALIFORNIA  
 HENRY H. STONE  
 Thomas W. Hoggan & Associates  
 Phil Boudier 7/1/85  
 45641  
 CARSON 13



BC 11308