

B.M. 2967 ELEV. 1180.581  
 NEWMALL QUAD. 1983

DOUBLE SCALE

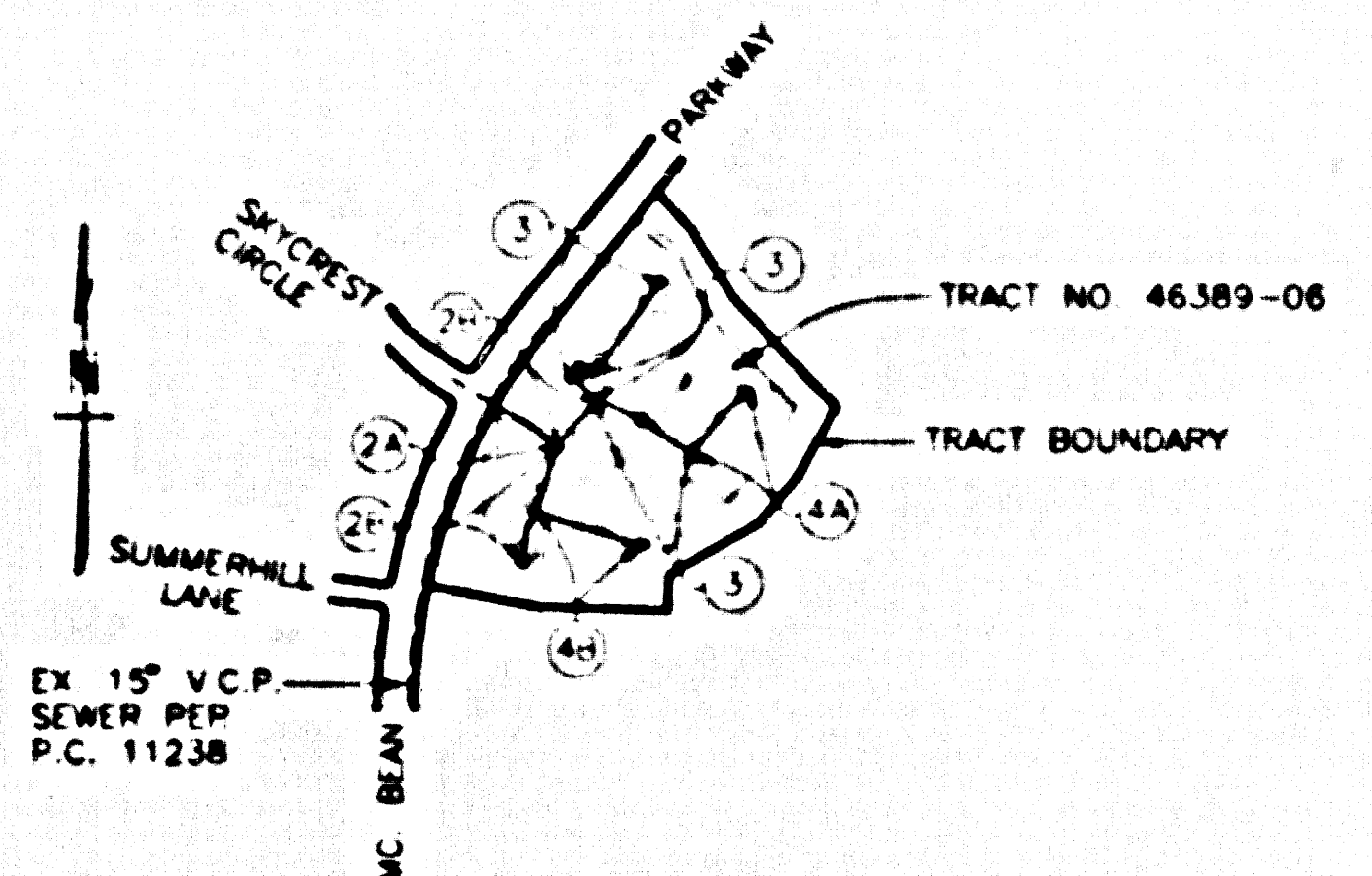
GENERAL NOTES

PROFILE, ALIGNMENT AND GRADE OF  
**SANITARY SEWERS**  
 TO BE CONSTRUCTED IN  
**TRACT NO. 46389-06**  
**PRIVATE CONTRACT NO. 11312**  
**INDEX 1294**  
**2 SHEETS; 4 PAGES**  
 SCALE: SEPT. 1995

PAGE 1

34001

- NOTE:  
 1. NUMBER IN CIRCLES INDICATES PAGE NUMBERS.  
 2. SANITARY SEWER ON PAGES 2, 3 AND 4 ARE IN SANITARY SEWER EASEMENTS



INDEX MAP  
 TRACT NO. 46389-06  
 P.C. No. 11312  
 THOM: 4460-F6  
 SCALE: 1" = 600'

NO CONNECTION FOR THE DISPOSAL OF INDUSTRIAL WASTES SHALL BE MADE TO SEWERS SHOWN ON THESE DRAWINGS UNLESS A PERMIT FOR INDUSTRIAL WASTEWATER DISCHARGE HAS BEEN ISSUED BY THE SANITATION DISTRICTS FOR SAID CONNECTION

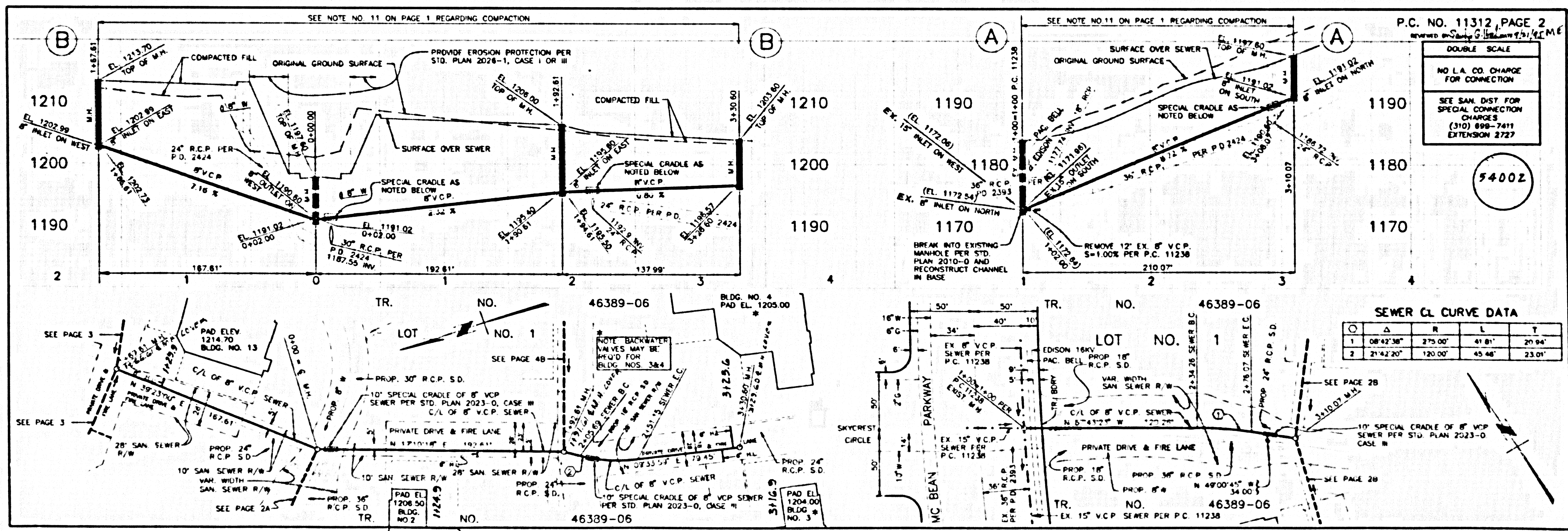
BEFORE BREAKING INTO OR CONSTRUCTION ON A COUNTY SANITATION DISTRICT SEWER AND PRIOR TO FINAL ACCEPTANCE OF THE PROJECT, A SANITATION DISTRICT INSPECTOR SHALL BE NOTIFIED BY PHONE AT 800-288-5450 SO THAT REQUIRED INSPECTIONS CAN BE MADE

ISSUE NO H.L. CONNECTION PERMITS UNTIL OUTLET SEWER P.C. 11238 IS ACCEPTED FOR PUBLIC USE BY LOS ANGELES COUNTY

CONSTRUCTION NOTES

SUNPAC ENGINEERING, INC.  
 11111 WILSON BLVD., SUITE 100  
 VAN NUYS, CALIF. 91411  
 W. L. Smith  
 REGISTERED PROFESSIONAL ENGINEER  
 No. 12891  
 Exp. 3-31-97  
 CIVIL  
 STATE OF CALIFORNIA

COUNTY OF LOS ANGELES, CALIFORNIA

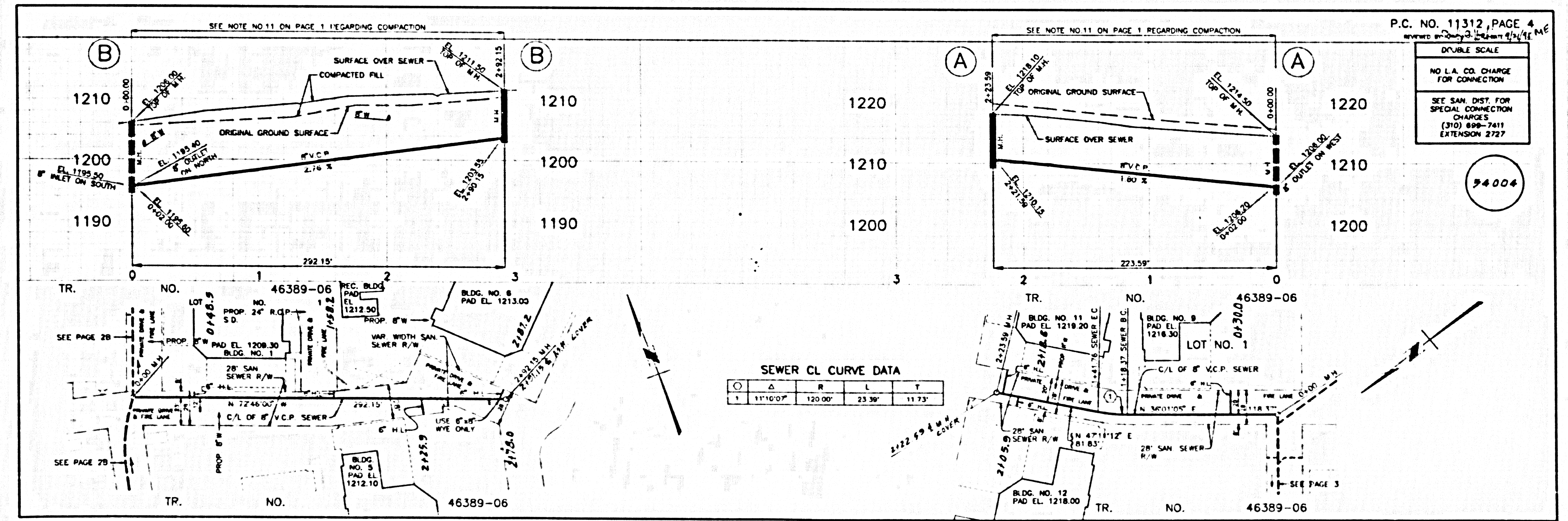
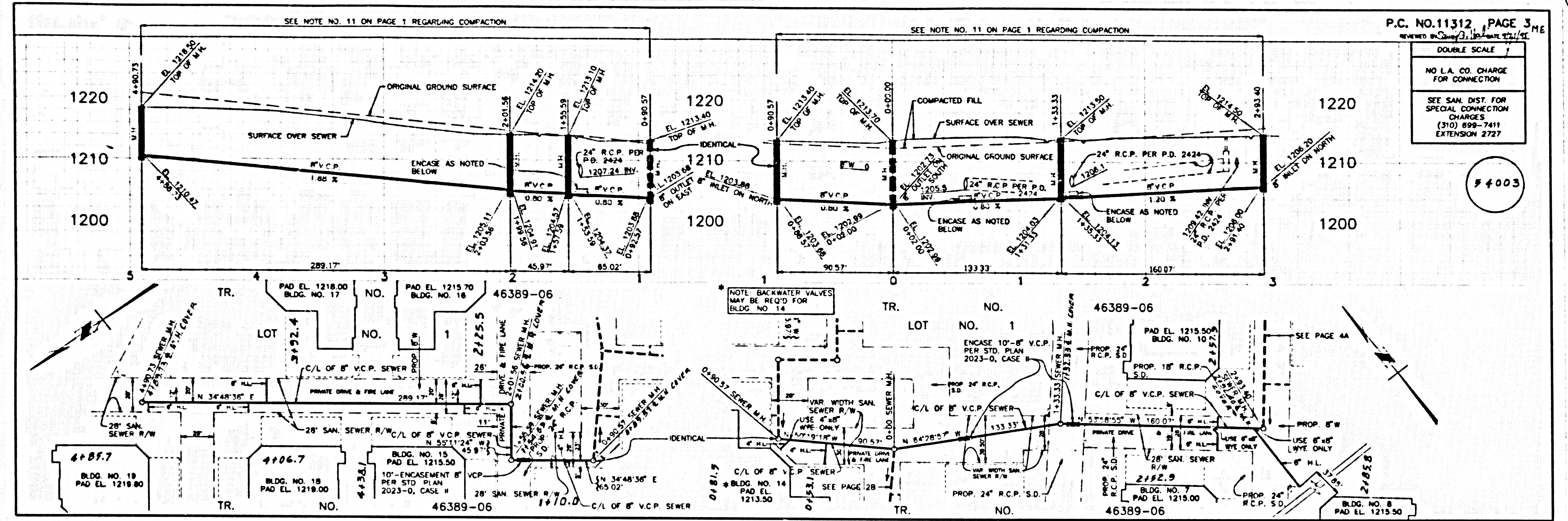


P.C. NO. 11312 PAGE 2  
 DOUBLE SCALE  
 NO L.A. CO. CHARGE FOR CONNECTION  
 SEE SAN. DIST. FOR SPECIAL CONNECTION CHARGES (310) 898-7411 EXTENSION 2727

54002

SEWER CL CURVE DATA

Δ	R	L	T
1 08°42'38"	275.00'	41.81'	20.94'
2 21°42'20"	120.00'	45.48'	23.01'



15121 NO. 46389-06 B.C. NO. 11312 S