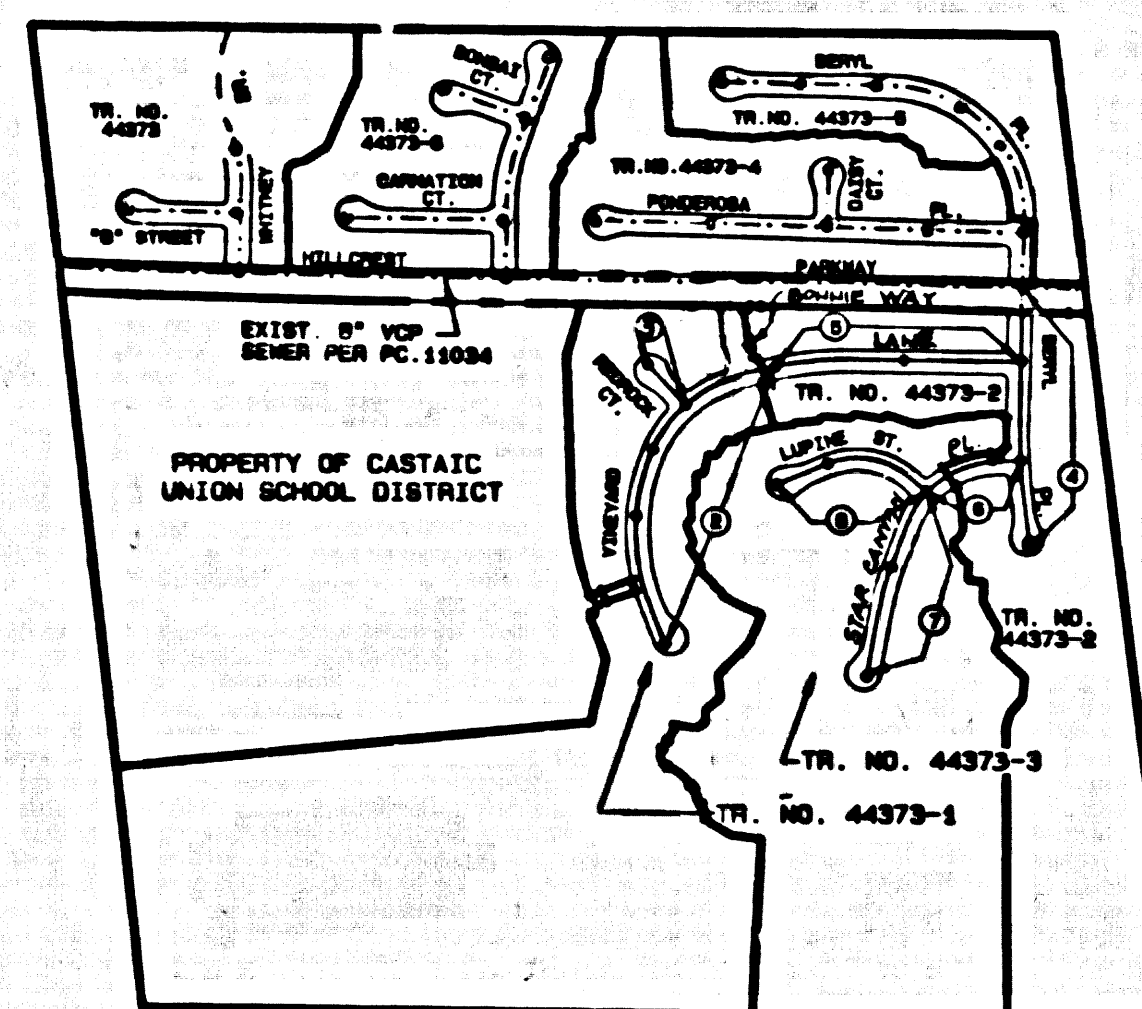


B.M. CL 3983 ELEV. 1092.425  
 REBM TAD IN CB 14 FT. E.C.L. THE 3LD  
 ROAD & 1.4 MI. N.W. HASLEY ON ROAD  
 OFF-RAMP 134 FT. SE PPH 1871271E  
 NEWMALL QUAD.19 83



NOTES:  
 1. NUMBERS IN CIRCLES  
 INDICATE PAGE NUMBERS.

INDEX MAP  
 P.C. 11334 TR. NOS. 44373-1, 44373-2, 44373-3  
 SCALE: 1"=600'  
 THOMAS GUIDE PG. 4459 E.F.-3

REVISION NO. 1  
 BY B&E ENGINEERS  
 DATE: 6-5-97  
 James T. Emerson R.C.E. 15531  
 EXP. 8-30-01  
 PAGE 4 - ADDED M.H. @ STA. 0+83.56, CHANGED GRADE FROM  
 STA. 0+83.56 TO STA. 2+400.88, CHANGED K.C.A.  
 TO D.I.P. PIPE.  
 APPROVED: *Sandy G. Helt* 4/1/97 33134  
 DEPT. OF PUBLIC WORKS R.C.E. NO.

REVISION NO. 2  
 BY B&E ENGINEERS  
 DATE: 6-27-97  
 James T. Emerson R.C.E. 15531  
 EXP. 8-30-01  
 1. REVISE INDEX MAP  
 2. PAGE 2, CHANGE ALL STATIONS  
 3. PAGE 3 & 4, ELIMINATED MAINLINE SEWER PLAN & PROFILE.  
 4. CHANGED 18 TO 8  
 5. PAGE 8, EXTEND MAINLINE SEWER FROM STA. 6+48.98 TO STA. 7+82.67  
 TO CONNECT MAINLINE SEWER ON PAGE 8.  
 6. CHANGED STREET NAME ON PAGES 2, 3, 4, 5, 6, 7, AND 8 AS FOLLOWS:  
 FROM VINEYARD STREET TO BOWBIE LANE, FROM BONNIE DR. TO BONNIE WAY,  
 FROM PARAMOUNT DR. TO STAR CANYON PL.  
 APPROVED: *Sandy G. Helt* 11/1/97 33134  
 DEPT. OF PUBLIC WORKS R.C.E. NO.



NO CONNECTION FOR THE DISPOSAL OF INDUSTRIAL WASTES SHALL  
 BE MADE TO SEWERS SHOWN ON THESE DRAWINGS UNTIL A PERMIT  
 FOR INDUSTRIAL WASTEWATER DISCHARGE HAS BEEN ISSUED BY THE  
 SANITATION DISTRICTS FOR SAID CONNECTION

BEFORE BREAKING INTO OR CONSTRUCTION ON A COUNTY SANITATION  
 DISTRICT SEWER AND PRIOR TO FINAL ACCEPTANCE OF THE PROJECT,  
 A SANITATION DISTRICT INSPECTOR SHALL BE NOTIFIED BY PHONE  
 AT (805) 285-6683 SO THAT REQUIRED INSPECTIONS CAN BE MADE.

ISSUE NO HOUSE-LATERAL CONNECTION PERMITS UNTIL  
 OUTLET SEWER IS CONSTRUCTED AND ACCEPTED FOR PUBLIC  
 USE BY THE COUNTY OF LOS ANGELES.

GENERAL NOTES:

- A SEWER CONSTRUCTION PERMIT SHALL BE OBTAINED AND A FEE PAID FOR CONSTRUCTION INSPECTION AND SECOND PLANS TO THE  
 DEPARTMENT OF PUBLIC WORKS AT THE PERMIT OFFICE AND 100 SOUTH PLYMOUTH AVENUE, 5TH FLOOR, ALHAMBRA, CALIFORNIA 91801.  
 PERMITS WILL BE ISSUED UPON RECEIPT OF THE COMPLETE SET OF ALL OTHER REQUIRED PERMITS, SUCH AS ROAD ENCROACHMENT, CALTRANS,  
 AND OTHER AGENCIES.
- PRIOR TO THE COMMENCEMENT OF ANY WORK, THE CONTRACTOR SHALL FILE A PERMIT FOR EXCAVATIONS AND TRENCHES FROM THE STATE OF  
 CALIFORNIA DIVISION OF INDUSTRIAL SAFETY AND A CERTIFICATE OF WORKER'S COMPENSATION INSURANCE WITH THE DEPARTMENT OF  
 PUBLIC WORKS. THE PERMIT AND CERTIFICATE MUST BE OBTAINED PRIOR TO THE COMMENCEMENT OF ANY WORK.
- IF WORK IS TO BE DONE IN A STATE HIGHWAY, A PERMIT MUST BE OBTAINED FROM THE STATE OF CALIFORNIA DIVISION OF HIGHWAYS,  
 156 SOUTH BRIDGE STREET, LOS ANGELES, CALIFORNIA.
- SEWER WORK IS WITHIN A CONTRACT CITY, THE CONTRACTOR MUST CONTACT THE DIRECTOR OF PUBLIC WORKS OF THAT CITY, TO  
 DETERMINE THE LOCATION TO THE SEWER MAINLINE.
- THE CONTRACTOR SHALL CONTACT THE DISTRICT OFFICE LISTED ON THE "APPLICATION FOR CONSTRUCTION PERMIT" TO ARRANGE FOR  
 AN ACCEPTABLE CONSTRUCTION START DATE AND SHALL NOTIFY THE CONSTRUCTION DIVISION BY TELEPHONE (818) 488-3126 AT LEAST  
 TWO WEEKS PRIOR TO THE START DATE OF WORK UNDER THIS CONTRACT.
- APPROVAL OF THIS PLAN BY THE COUNTY OF LOS ANGELES DOES NOT CONSTITUTE A REPRESENTATION AS TO ACCURACY OF THE  
 LOCATION OR THE EXISTENCE OR NON-EXISTENCE OF ANY UNDERGROUND UTILITY PIPE OR STRUCTURE WITHIN THE LIMITS OF THIS  
 PROJECT. THIS NOTE APPLIES TO ALL PAGES.
- ALL WORK SHALL BE IN ACCORDANCE WITH THE STANDARD SPECIFICATIONS FOR PUBLIC WORKS CONSTRUCTION, LATEST EDITION,  
 INCLUDING SUPPLEMENTS AND THE SPECIAL PROVISIONS FOR THE CONSTRUCTION OF SANITARY SEWER, DATED JULY 1, 1981, AND  
 SHALL BE PRODUCED ONLY IN THE PRESENCE OF THE DEPARTMENT OF PUBLIC WORKS PERSONNEL.
- THE CONTRACTOR IS DIRECTED TO SECTION 7-10.4.1 OF THE STANDARD SPECIFICATIONS FOR PUBLIC WORKS  
 CONSTRUCTION IN REGARDS TO SAFETY CURETS AND SHALL CONFORM TO THE "STANDARD PUBLIC SAFETY REQUIREMENTS" AS SHOWN  
 ON LOS ANGELES DEPARTMENT OF PUBLIC WORKS STANDARD 8-3.
- SEWERAGE AND 18 INCH DIAMETER OR SMALLER SHALL BE CONSTRUCTED IN ACCORDANCE WITH THE STANDARD SPECIFICATIONS FOR PUBLIC WORKS.  
 NO REVISIONS SHALL BE MADE IN THESE PLANS WITHOUT THE APPROVAL OF THE DIRECTOR OF PUBLIC WORKS.
- NO REPRESENTATIVE OF THE DEPARTMENT OF PUBLIC WORKS SHALL SURVEY OR LAYOUT ANY PORTION OF THE WORK.
- GRADES TO WHICH THIS IMPROVEMENT IS TO BE CONSTRUCTED ARE SHOWN ON PLANS AND PROFILES. GRADE POINTS FOR TOP OF CURB,  
 CENTERLINE OF STREET, OR CENTERLINE OF ALLEYS ARE SHOWN BY CIRCLES OR TRIANGLES AT POINTS BETWEEN DESIGNATED POINTS.  
 THE SPACE SHALL BE ESTABLISHED AS TO CONFORM TO A STRAIGHT LINE GRADE BETWEEN SAID DESIGNATED POINTS.
- THE PRIVATE ENGINEER SHALL FURNISH THE DEPARTMENT OF PUBLIC WORKS WITH GRADE SHEETS AND STATIONS FOR ALL HOUSE  
 LATERALS AND 18 INCH BRANCHES AND SHALL PROVIDE STATIONING FOR THEIR OWN HOUSE LATERAL LOCATIONS WITH STATIONING THE ONLY  
 METHOD. ALL HOUSE LATERALS SHALL BE CONSTRUCTED IN A STRAIGHT ALIGNMENT TO THE MAIN LINE SEWER.  
 EXCEPT AS SHOWN ON THE PLANS, HOUSE LATERALS FROM CHIMNEYS SHALL NOT HAVE AN ANGLE OF LESS THAN 45 DEGREES WITH THE MAIN LINE SEWER.  
 ANY CHANGE IN ALIGNMENT SHALL BE INDICATED IN WRITING BY THE PRIVATE ENGINEER.
- THE PRIVATE ENGINEER SHALL FURNISH THE HOUSE LATERAL DEPTH AT THE PROPERTY LINE BELOW THE TOP CURB ELEVATION FOR EACH  
 HOUSE LATERAL, ON THE GRADE SHEET.

CONSTRUCTION NOTES:

- PROVIDE SAFETY STAKES ON THE PROPERTY LINE OR PROPERTY LINES PRODUCED AT RIGHT ANGLES TO THE SEWER LINE AT THE  
 CENTERLINE OF STREET, OR CENTERLINE OF ALLEYS, FOR 50 FEET FROM THE CENTERLINE OF THE SEWER LINE.
- VITRIFIED CLAY PIPE JOINTS SHALL BE TYPE "W" OR "N" PER STANDARD SPECIFICATIONS SECTION 808-2.
- IF A FRENCH PIPE IS SETTING THREE FEET OF THE SEWER, THE SEWER SHALL BE ENCASED PER STANDARD PLAN 8-15, CASE II,  
 10 FEET FROM THE CENTERLINE OF THE SEWER.
- ALL JOINTS BETWEEN CAST IRON PIPE AND VITRIFIED CLAY PIPE SHALL BE MADE WITH A RUBBER SLEEVE JOINT, TYPE "W"  
 WITH BURRING UP ACCORDING TO STANDARD SPECIFICATIONS SECTION 808-2.
- HOUSE LATERALS TO BE CONSTRUCTED WITH INVERTS AT THE PROPERTY LINE 6 FEET BELOW CURB GRADE EXCEPT AS NOTED.
- PIPE ON THE BRANCHES MAY BE USED FOR CONNECTIONS TO MAINLINE SEWERS EXCEPT AS NOTED.
- IF THE GRADE OF HOUSE LATERALS OR BRANCHES IS SUCH THAT THE SEWER LINE IS NOT PROTECTED FROM AT LEAST FOUR FEET OF COVER OVER THE TOP OF A  
 MAINLINE OR HOUSE LATERAL, THE SEWER SHALL BE ENCASED PER STANDARD PLAN 8-15, CASE II, EXCEPT AS NOTED.
- ALL STRUCTURES SHALL BE EITHER CAST IRON MANHOLES PER STANDARD PLAN 8-2 OR PRECAST CONCRETE SEWER MANHOLES PER  
 STANDARD PLAN 8-16, EXCEPT AS NOTED.
- REPAIRS TO ALL TRENCHES EXCEPT PAVED AREAS TO MEET LOS ANGELES COUNTY PUBLIC WORKS OR CALIFORNIA STATE HIGHWAY  
 REQUIREMENTS IN ACCORDANCE WITH THE PERMITS.
- FILL CONCERNING WITH BOTTLED WATER CONSTRUCTION AND SAME EQUIVALENTS BY A QUALIFIED CIVIL ENGINEER SHALL BE PROVIDED BY THE  
 CONTRACTOR PRIOR TO THE COMMENCEMENT OF ANY WORK.
- ALL BACKFILL AND FILLS OUTSIDE OF STREET FRONT OF WALLS OR CONSTRUCTED TO TOP OF WALKWAY SHALL BE DETERMINED BY THE  
 CONTRACTOR AND SHALL BE IN ACCORDANCE WITH THE STANDARD SPECIFICATIONS FOR PUBLIC WORKS CONSTRUCTION. THE CONTRACTOR SHALL  
 NOTIFY THE CONSTRUCTION DIVISION OF THE DEPARTMENT OF PUBLIC WORKS PRIOR  
 TO ACCEPTANCE OF THE WORK.
- MANHOLE TOPS ON UNIMPROVED RIGHTS OF WAY TO BE 8 INCH ABOVE FINISHED GRADE.
- SEWERS TO BE TESTED FOR LEAKAGE PER SECTION 300-1.4 OF THE STANDARD SPECIFICATIONS AND SPECIAL PROVISIONS.

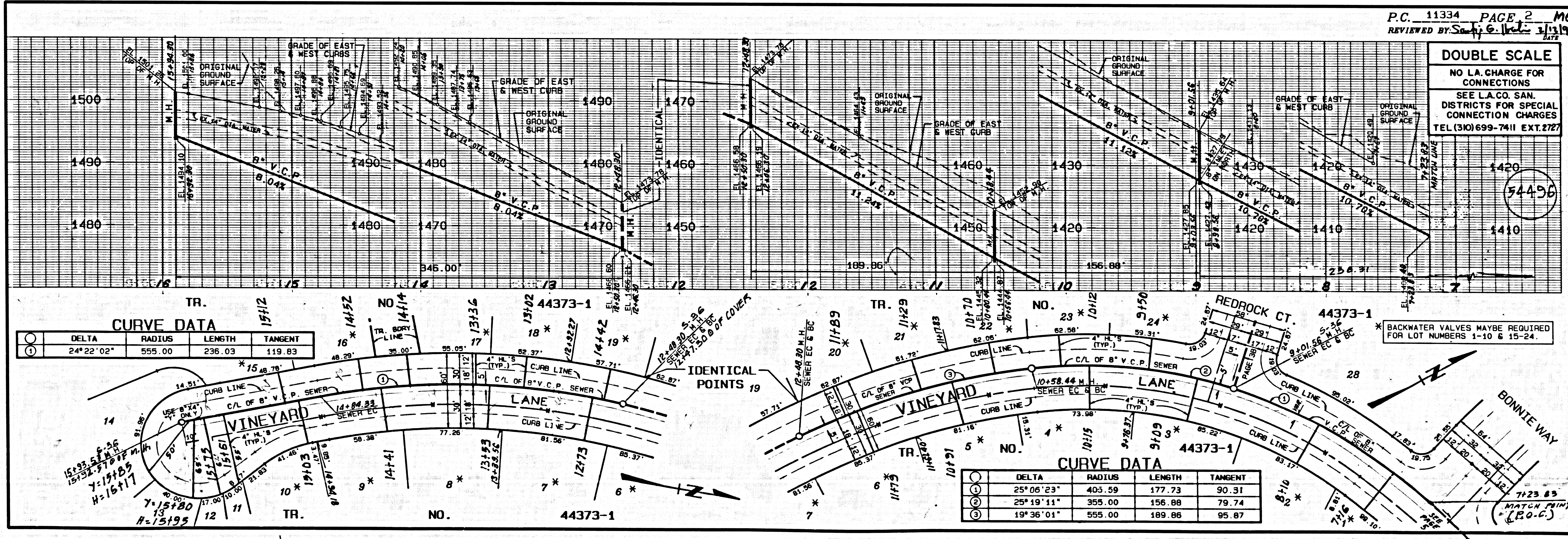


THE FOLLOWING LATEST REVISED STANDARD PLANS ON FILE IN THE OFFICE OF THE DEPARTMENT OF PUBLIC WORKS SHALL APPLY  
 TO THE CONSTRUCTION OF THIS PROJECT:

LEWIS	SECTION
MINIMUM PUBLIC SAFETY REQUIREMENTS	8-1
BRICK MANHOLE	8-2
REINFORCED PRECAST CONCRETE MANHOLE	8-3
STANDARD MANHOLE RITE	8-4
BEDDING FOR SEWER PIPE	8-5
CRACKING AND ENCASEMENT	8-6
PIPE ON THE BRANCH	8-7
ALLOWABLE TRENCH WIDTHS	8-8
LOCKING MANHOLE FRAME AND COVER	8-9
NON-REINFORCED PRECAST CONCRETE MANHOLE	8-10
RECTANGULAR MANHOLE FRAME & COVERS	8-11
PRECAST CONCRETE SHALLOW MANHOLE	8-12

COUNTY OF LOS ANGELES, CALIFORNIA  
 HARRY W. STONE, DIRECTOR OF PUBLIC WORKS  
 CHARLES W. CARRY, CHIEF ENGINEER  
 COL. SEAN DESS, DIST. ENG.  
 APPROVED: *Sandy G. Helt* 4/1/97  
 CHECKED: *Sandy G. Helt* 4/1/97  
 REG. C.E. NO. 45141 (DATE)

SANTA CLARITA BLDG. DIST. 8.2



TR. 15112 NO. 44373-1

DELTA	RADIUS	LENGTH	TANGENT
24° 22' 02"	555.00	236.03	119.83

TR. 11173 NO. 44373-1

DELTA	RADIUS	LENGTH	TANGENT
25° 06' 23"	405.59	177.73	90.31
25° 19' 11"	355.00	156.88	79.74
19° 36' 01"	555.00	189.86	95.87

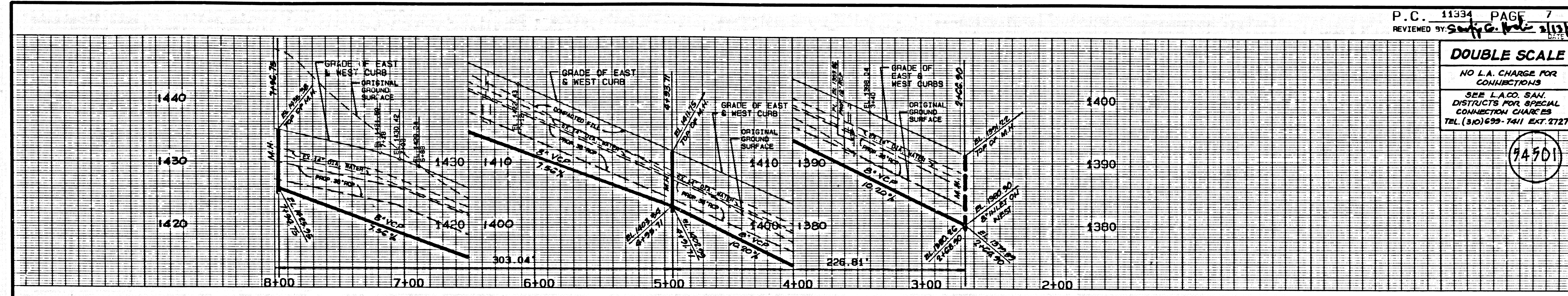
P.C. 11334 PAGE 2 ME  
 REVIEWED BY *Sandy G. Helt* 11/1/97

DOUBLE SCALE  
 NO L.A. CHARGE FOR  
 CONNECTIONS  
 SEE L.A. CO. SAN.  
 DISTRICTS FOR SPECIAL  
 CONNECTION CHARGES  
 TEL (310) 699-7411 EXT. 2127

\* BACKWATER VALVES MAYBE REQUIRED  
 FOR LOT NUMBERS 1-10 & 15-24.

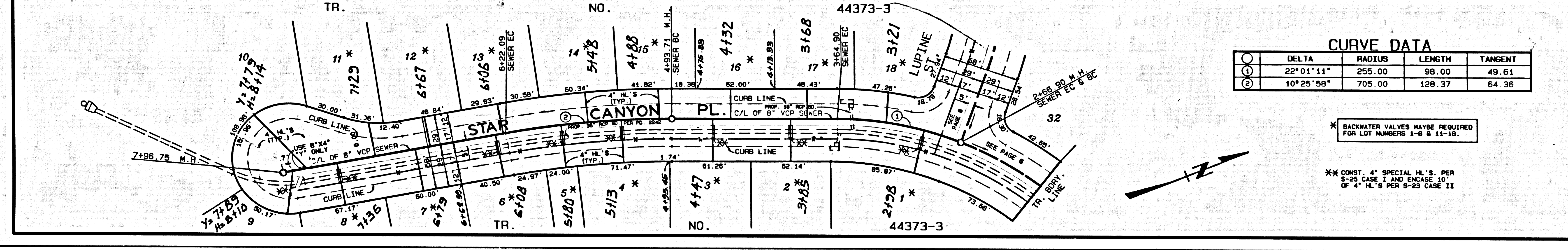
1

BC 11334



**DOUBLE SCALE**  
 NO L.A. CHARGE FOR CONNECTIONS  
 SEE L.A.C.O. SAN. DISTRICTS FOR SPECIAL CONNECTION CHARGES  
 TEL (310) 659-7411 EXT. 2727

74501

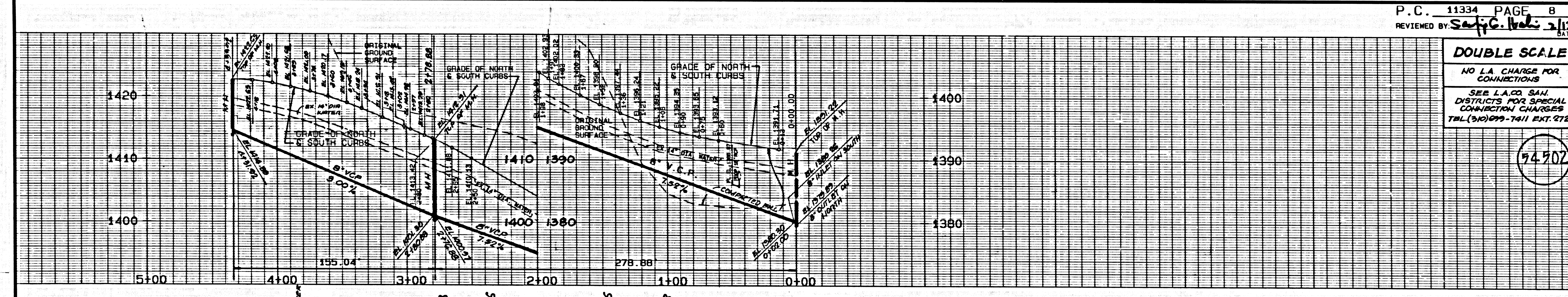


**CURVE DATA**

DELTA	RADIUS	LENGTH	TANGENT
22°01'11"	255.00	98.00	49.61
10°25'58"	705.00	128.37	64.36

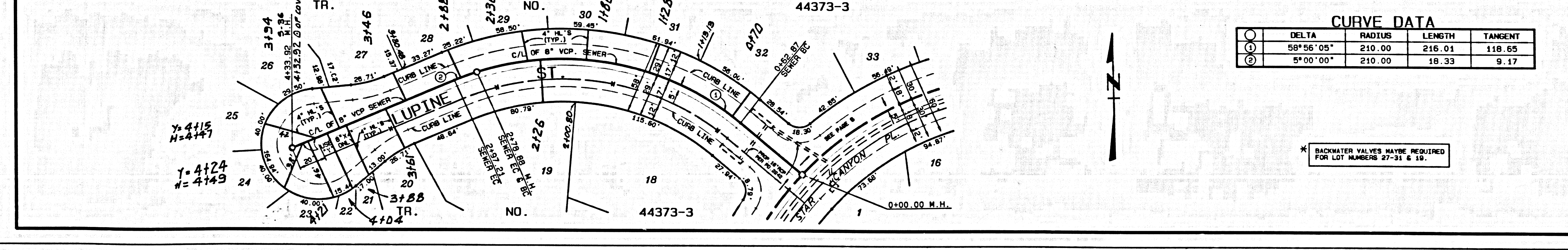
\* BACKWATER VALVES MAYBE REQUIRED FOR LOT NUMBERS 1-8 & 11-18.

\*\* CONST. 4" SPECIAL M.S. PER S-25 CASE I AND ENCASE 10" OF 4" M.S. PER S-23 CASE II



**DOUBLE SCALE**  
 NO L.A. CHARGE FOR CONNECTIONS  
 SEE L.A.C.O. SAN. DISTRICTS FOR SPECIAL CONNECTION CHARGES  
 TEL (310) 659-7411 EXT. 2727

74502

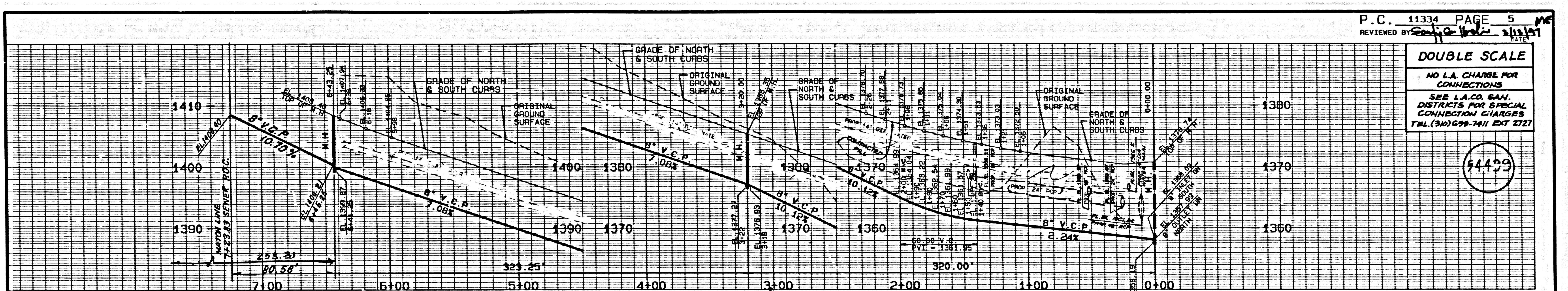


**CURVE DATA**

DELTA	RADIUS	LENGTH	TANGENT
58°56'05"	210.00	216.01	118.65
5°00'00"	210.00	18.33	9.17

\* BACKWATER VALVES MAYBE REQUIRED FOR LOT NUMBERS 27-31 & 19.

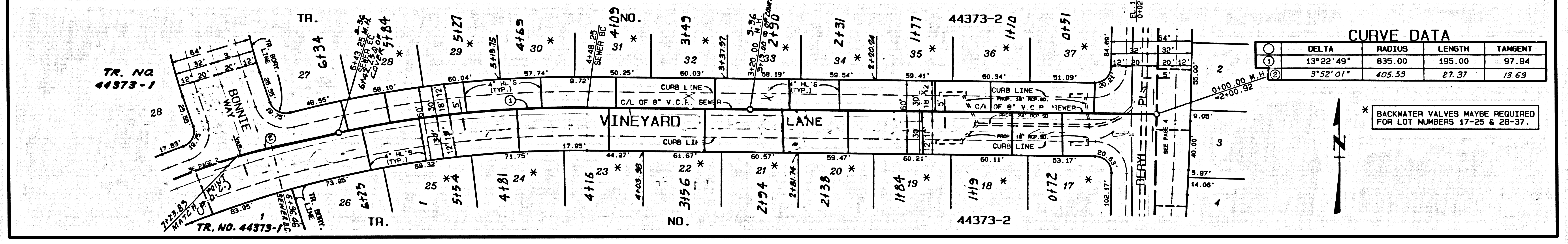
A 4337 39



P.C. 11334 PAGE 5  
 REVIEWED BY *[Signature]* DATE 2/13/97

**DOUBLE SCALE**  
 NO L.A. CHARGE FOR CONNECTIONS  
 SEE L.A.C.D. SAN. DISTRICTS FOR SPECIAL CONNECTION CHARGES  
 TEL (909) 999-7411 EXT 3121

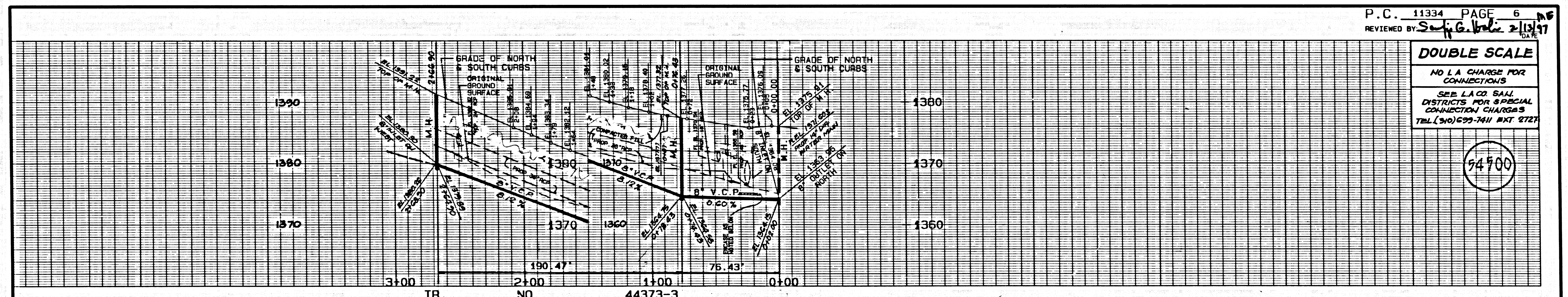
54429



**CURVE DATA**

DELTA	RADIUS	LENGTH	TANGENT
13°22'49"	835.00	195.00	97.94
3°52'01"	405.53	27.37	13.63

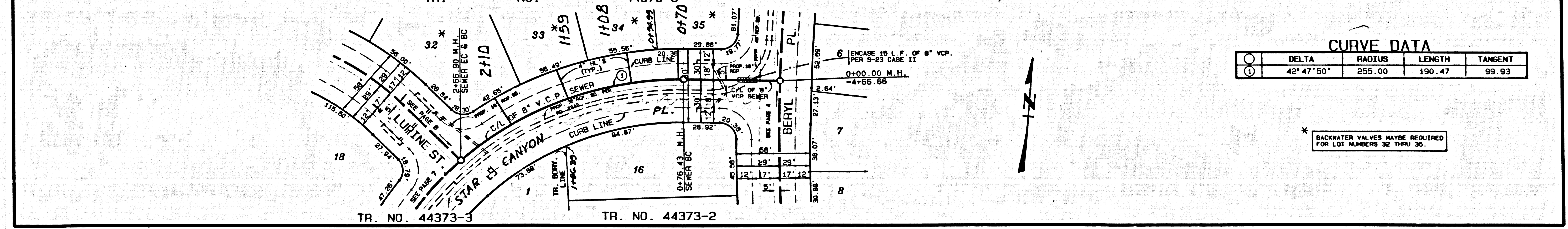
\* BACKWATER VALVES MAYBE REQUIRED FOR LOT NUMBERS 17-25 & 28-37.



P.C. 11334 PAGE 6  
 REVIEWED BY *[Signature]* DATE 2/13/97

**DOUBLE SCALE**  
 NO L.A. CHARGE FOR CONNECTIONS  
 SEE L.A.C.D. SAN. DISTRICTS FOR SPECIAL CONNECTION CHARGES  
 TEL (909) 999-7411 EXT 3121

54900

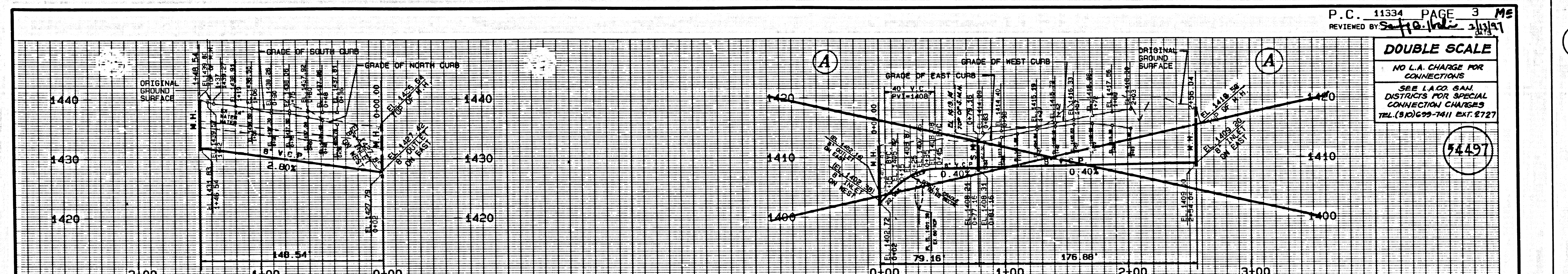


**CURVE DATA**

DELTA	RADIUS	LENGTH	TANGENT
42°47'50"	255.00	190.47	99.93

\* BACKWATER VALVES MAYBE REQUIRED FOR LOT NUMBERS 32 THRU 35.

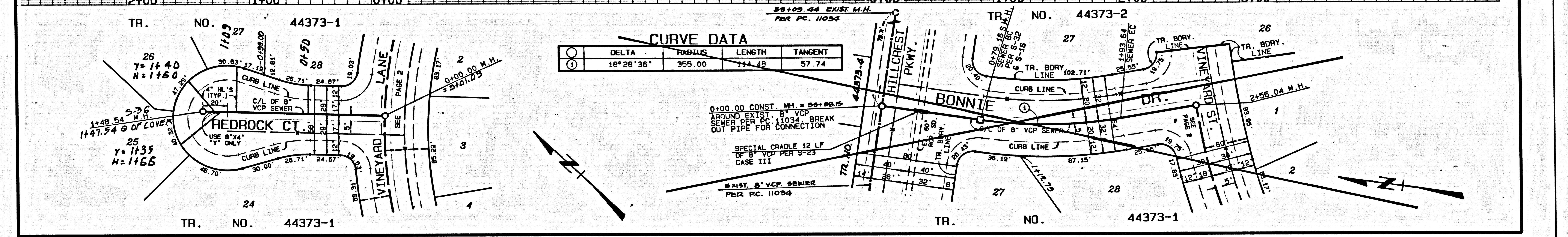
3  
 BC JJ334 39



P.C. 11334 PAGE 3 MF  
 REVIEWED BY *Seiffert* DATE 3/13/97

**DOUBLE SCALE**  
 NO L.A. CHARGE FOR CONNECTIONS  
 SEE L.A.O. SAN DISTRICTS FOR SPECIAL CONNECTION CHARGES  
 TEL. (916) 699-7411 EXT. 2727

54497



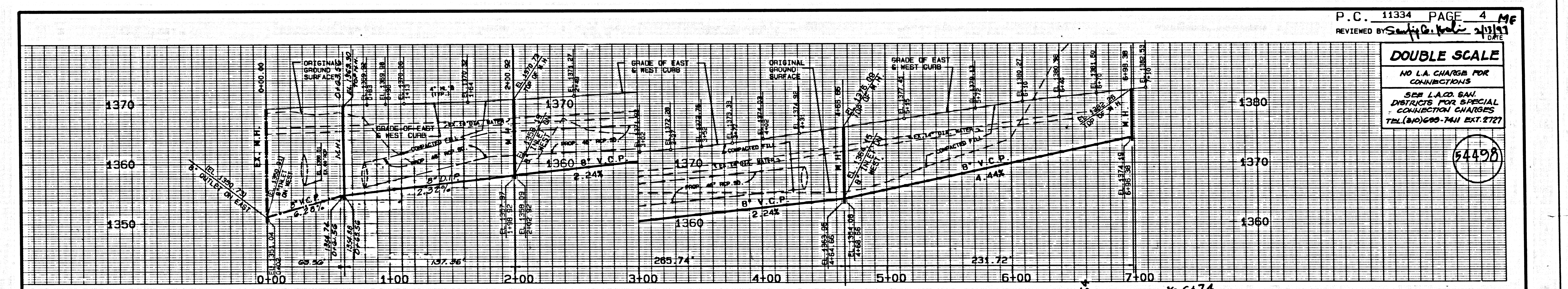
**CURVE DATA**

DELTA	RADIUS	LENGTH	TANGENT
18° 28' 36"	355.00	114.48	57.74

P.C. 11334 PAGE 4 MF  
 REVIEWED BY *Seiffert* DATE 3/13/97

**DOUBLE SCALE**  
 NO L.A. CHARGE FOR CONNECTIONS  
 SEE L.A.O. SAN DISTRICTS FOR SPECIAL CONNECTION CHARGES  
 TEL. (916) 699-7411 EXT. 2727

54498



**CURVE DATA**

DELTA	RADIUS	LENGTH	TANGENT
4° 24' 03"	1495.00	114.83	57.44
4° 02' 34"	1495.00	105.49	52.77

\* BACKWATER VALVES MAYBE REQUIRED FOR LOT NUMBERS 7-9 & 16.

BC 11334 5