

B.M. CL 1947 ELEV. 1057.212
FROM 148 CTR SOUTH END MEDIAN CURB OF
THE OLD ROAD AT NORTH SIDE OF
FIVE CANYON ROAD

NEWHALL QUAD. 1983

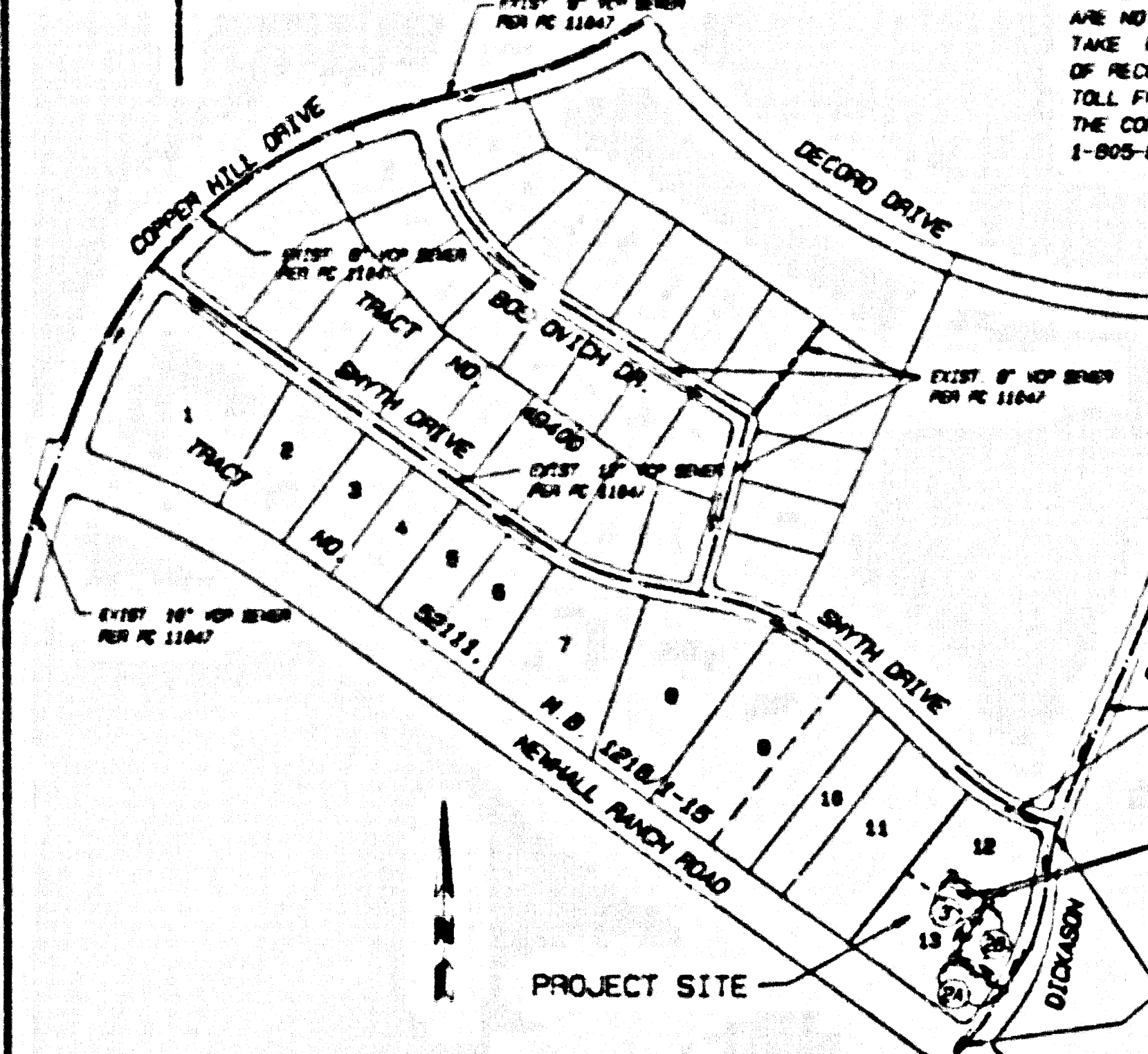
DOUBLE SCALE

PRIVATE ENGINEERS NOTICE TO CONTRACTORS:

THE EXISTENCE AND LOCATION OF ANY UNDERGROUND UTILITY PIPES OR STRUCTURES SHOWN ON THESE PLANS IS OBTAINED BY A SEARCH OF AVAILABLE RECORDS TO THE BEST OF OUR KNOWLEDGE. THERE ARE NO EXISTING UTILITIES EXCEPT AS SHOWN ON THIS MAP. THE CONTRACTOR IS REQUIRED TO TAKE PRECAUTIONARY MEASURES TO PROTECT THE UTILITY LINES SHOWN AND ANY OTHER LINES NOT OF RECORD OR NOT SHOWN ON THIS DRAWING PRIOR TO EXCAVATION. THE CONTRACTOR SHALL CALL OF RECORD OR NOT SHOWN ON THIS DRAWING PRIOR TO EXCAVATION. THE CONTRACTOR SHALL CALL OF RECORD OR NOT SHOWN ON THIS DRAWING PRIOR TO EXCAVATION. THE CONTRACTOR SHALL CALL OF RECORD OR NOT SHOWN ON THIS DRAWING PRIOR TO EXCAVATION.

REGISTERED CIVIL ENGINEER NO. 52888, EXP. 12-31-98 DATE 11-28-98

ISSUE NO HOUSE LATERAL CONNECTION PERMITS UNTIL OUTLET SEWER P.C. 11047 IS ACCEPTED FOR PUBLIC USE BY THE COUNTY OF LOS ANGELES



INDEX MAP
SCALE: 1" = 500'
P.C. 11341 SEWER IN R/W ON LOTS 12 & 13
TR. NO. 52111 N.B. 1218/1-15
THOMAS GUIDE P.O. NO. 123-J-6

NOTE: 1. NUMBERS IN CIRCLES INDICATE PAGE NUMBERS
2. ALL SEWER MAIN LINES ARE IN SANITARY SEWER EASEMENT PER DOC. NO. 96-793959, REC. 12/15/96 AT (800) 288-4883 SO THAT REQUIRED INSPECTIONS CAN BE MADE

GENERAL NOTES:

- 1. ALL WORK SHALL BE IN ACCORDANCE WITH THE STANDARD SPECIFICATIONS FOR PUBLIC WORKS CONSTRUCTION, 1998 EDITION, AND SHALL BE SUBJECT TO THE SPECIAL PROVISIONS FOR THE CONSTRUCTION OF SANITARY SEWERS, DATED JULY 21, 1998, AND SHALL BE SUBJECT TO THE SPECIAL PROVISIONS FOR THE CONSTRUCTION OF SANITARY SEWERS, DATED JULY 21, 1998, AND SHALL BE SUBJECT TO THE SPECIAL PROVISIONS FOR THE CONSTRUCTION OF SANITARY SEWERS, DATED JULY 21, 1998.

CONSTRUCTION NOTES:

- 1. PROVIDE SURVEY STAKES BY THE PROPERTY LINE OR PROPERTY LINE PROLONGED AT RIGHT ANGLES TO THE CENTER LINE AT THE CENTERLINE OF EACH MANHOLE.
- 2. UNREINFORCED CONCRETE MANHOLES SHALL BE TWO (2) FT. OR 18" FOR STANDARD SPECIFICATIONS SECTION 800-2.

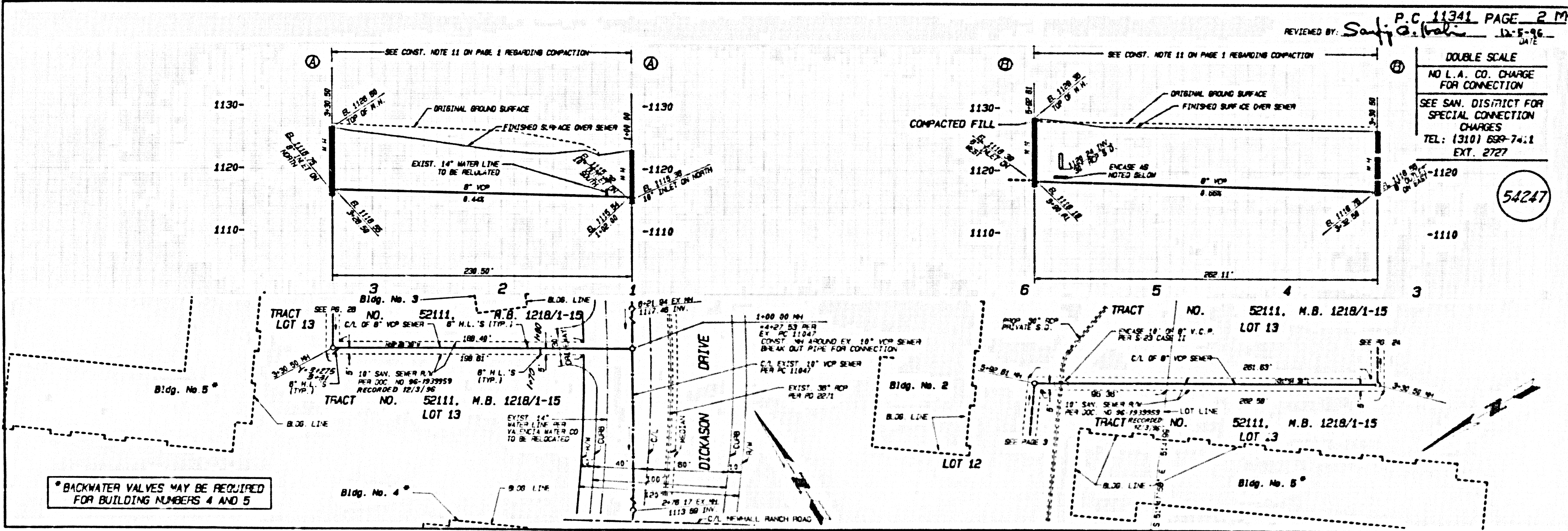
PROFILE, ALIGNMENT AND GRADE OF
SANITARY SEWERS PAGE 1
TO BE CONSTRUCTED IN
R/W ON A PORTION OF 54246
LOTS 12 & 13
TRACT No. 52111 (RECORDED)
PRIVATE CONTRACT NO. 11341
INDEX 1285
2 SHEETS; 3 PAGES

SCALE: VERT. 1" = 8'
HORIZ. 1" = 40' NOV, 1998
PREPARED IN THE OFFICES OF
SINKAM ENGINEERING
1829 BURBANK BLVD. VAN NUYS, CA 91411-3008
TEL: (818) 787-8000
BY: [Signature] REG. C.E. No. 52890

THE FOLLOWING LATEST REVISED STANDARD PLANS ARE IN FILE IN THE OFFICE OF THE DEPARTMENT OF PUBLIC WORKS SHALL APPLY IN THE CONSTRUCTION OF THIS PROJECT

LEEDS	8-1
MINIMUM PUBLIC SAFETY REQUIREMENTS	8-2
SEWER MANHOLE	8-3
STANDARD MANHOLE STOP	8-17
SEWERING FROM SEWER PIPE	8-20
CHAMBER AND ENCASUREMENT	8-21
PIPE ON THE SURFACE	8-22
ALLOWABLE TRENCH WIDTHS	8-23
LEAKING MANHOLE FRAME AND COVER	8-24
NON-REINFORCED FRAGMENT CONCRETE MANHOLE	8-25

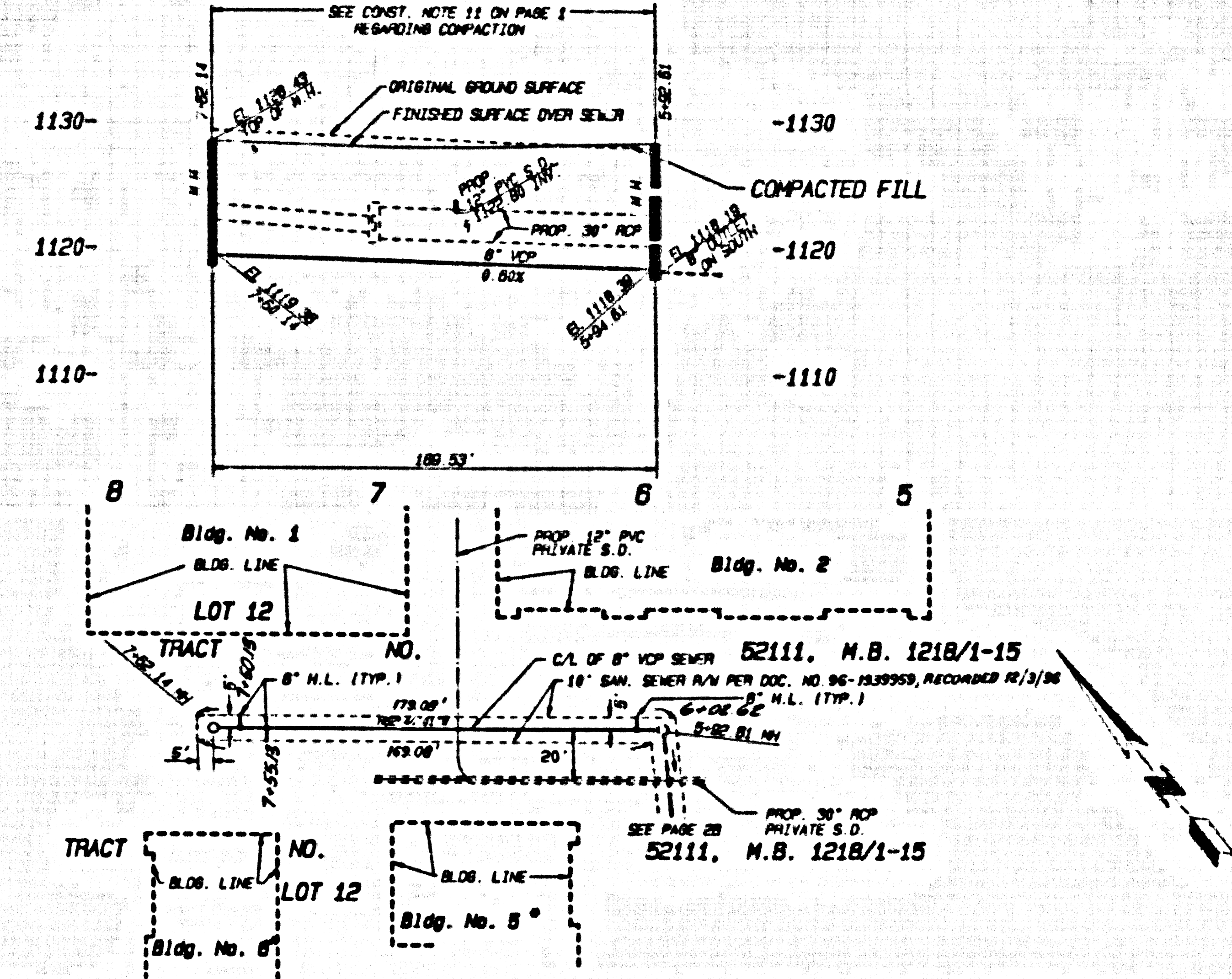
COUNTY OF LOS ANGELES, CALIFORNIA
HARRY M. STONE
DIRECTOR OF PUBLIC WORKS
CHARLES M. CARRY
CHIEF ENGINEER
APPROVED: [Signature] 11/15/98
OFFICIAL SEAL: [Signature] 12/15/98
OFFICIAL SEAL: [Signature] 12/15/98
REG. C.E. NO. 45681
SANTA CLARITA VALLEY, BLDG. DIST. 882



P.C. 11341 PAGE 2 ME
REVIEWED BY: [Signature] DATE 11-5-98
DOUBLE SCALE
NO L.A. CO. CHARGE FOR CONNECTION
SEE SAN. DISTRICT FOR SPECIAL CONNECTION CHARGES
TEL: (310) 639-7411 EXT. 2727
54246

*BACKWATER VALVES MAY BE REQUIRED FOR BUILDING NUMBERS 4 AND 5

1 1A311 39 11152.0M RT 11152 51 210J WD WNR MI 26W82



* BACKWATER VALVES MAY BE REQUIRED FOR BUILDING NUMBERS 5 AND 6

DOUBLE SCALE
NO L.A. CO. CHARGE FOR CONNECTION
SEE SAN. DISTRICT FOR SPECIAL CONNECTION CHANGES
TEL. (310) 699-7411 EXT. 2727

54248

5
 11341 CP
 11152 .04 .RT/
 15 2 15 2
 2R2M2 IN R/W ON 1012 15 2 15