

**BENCH MARK**  
 NEWHALL (1995)  
 RD BM TAG IN SE COR. ROCK HDWL AT ANGLE PT.  
 17 FT E. CENTERLINE SAN FRANCISCO CYN. RD.  
 & 0.45 MILE NORTH OF SHAWNEE CT. (TO THE E.)  
 AT MILE MKR. #17.56  
 ELEV. 1293.665 B.M. NO. L 3598

**PRIVATE ENGINEER'S NOTICE TO CONTRACTORS**  
 THE EXISTENCE AND LOCATION OF ANY UNDERGROUND UTILITY PIPES OR STRUCTURES SHOWN ON THESE PLANS ARE OBTAINED BY A SEARCH OF THE AVAILABLE RECORDS. TO THE BEST OF OUR KNOWLEDGE, THERE ARE NO EXISTING UTILITIES EXCEPT AS SHOWN ON THIS MAP. THE CONTRACTOR IS REQUIRED TO TAKE DUE PRECAUTIONARY MEASURES TO PROTECT THE UTILITIES SHOWN AND ANY OTHER UTILITIES NOT OF RECORD OR NOT SHOWN ON THIS DRAWING. PRIOR TO EXCAVATION THE CONTRACTOR SHALL CALL UNDERGROUND SERVICE ALERT AT 800-422-4133.

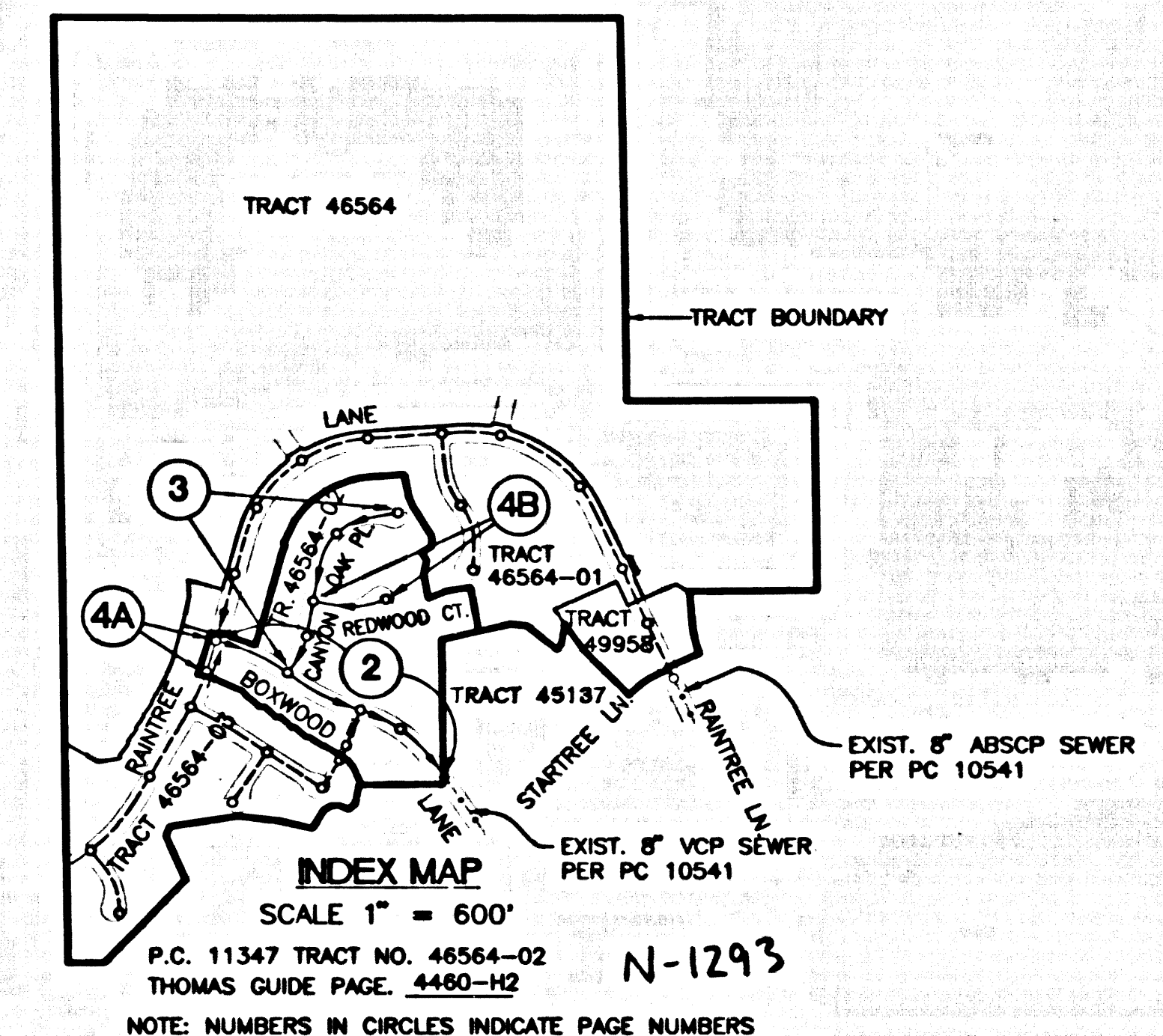
*Robert M. Stone* 1/29/97  
 REG. C.E. NO. 21649 DATE

**ABS COMPOSITE PIPE STANDARD CONSTRUCTION NOTES:**

- THE FOLLOWING ARE STANDARD ABS COMPOSITE PIPE CONSTRUCTION NOTES:
- FULL COMPLIANCE WITH THE STANDARD SPECIFICATIONS AND THE SPECIAL PROVISIONS IS REQUIRED FOR THE INSTALLATION OF ABS COMPOSITE PIPE.
  - MANHOLE WATER STOP GASKETS AND CLAMPS ARE REQUIRED FOR THE CONNECTION OF ABS COMPOSITE PIPE TO MANHOLE STRUCTURES.
  - ABS SOLID WALL PIPE MUST BE USED FOR WYE AND HOUSE LATERAL CONNECTIONS TO ABS COMPOSITE MAINLINE SEWER PIPE.
  - ABS COMPOSITE PIPE SHALL BE BEDDED IN CONFORMANCE WITH THE TABLE IN SECTION 306-1.2.1 OF THE SPECIAL PROVISIONS (SEE PAGES 46-41 THROUGH 46-50 OF THIS MANUAL).
  - THREE DEGREE DEFLECTION COUPLERS ARE REQUIRED FOR RADII OF CURVATURE LESS THAN 300 FEET WHEN USING 8" ABS COMPOSITE PIPE.
  - NO CONNECTION FOR DISPOSAL OF INDUSTRIAL WASTE IS ALLOWED IF ABS COMPOSITE PIPE IS USED.
  - SEWER LINE CURVATURE SHALL NOT BE ACHIEVED BY PULLING OF JOINTS OR FITTING PIPE ENDS WHEN USING PLASTIC PIPE INCLUDING ABS COMPOSITE PIPE.
  - ALL WYES AND/OR HOUSE LATERALS ARE TO BE AT LEAST FIVE FEET APART AND WHEN POSSIBLE NOT CLOSER THAN FIVE FEET TO ANY MANHOLE.
  - ABS SOLID WALL PIPE IS NOT ACCEPTABLE FOR USE AS MAINLINE SEWER.
  - ONLY WYE BRANCHES ARE TO BE USED FOR CONNECTION TO ABS COMPOSITE MAINLINE SEWER PIPE.

NO CONNECTION FOR THE DISPOSAL OF INDUSTRIAL WASTES SHALL BE MADE TO SEWERS SHOWN ON THESE DRAWINGS UNLESS A PERMIT FOR INDUSTRIAL WASTEWATER DISCHARGE HAS BEEN ISSUED BY THE SANITATION DISTRICTS FOR SAID CONNECTION.

BEFORE BREAKING INTO OR CONSTRUCTION ON A COUNTY SANITATION DISTRICT SEWER AND PRIOR TO FINAL ACCEPTANCE OF THE PROJECT, A SANITATION DISTRICT INSPECTOR SHALL BE NOTIFIED BY PHONE AT (805) 386-4665 SO THAT REQUIRED INSPECTIONS CAN BE MADE.



**GENERAL NOTES:**

- ELEVATIONS ARE IN FEET ABOVE U.S.C. & G.S. MEAN SEA LEVEL DATUM OF 1929.
- NO REVISIONS SHALL BE MADE IN THESE PLANS WITHOUT THE APPROVAL OF THE DIRECTOR OF PUBLIC WORKS.
- NO REPRESENTATIVE OF THE DEPARTMENT OF PUBLIC WORKS WILL SURVEY OR LAY OUT ANY PORTION OF THE WORK.
- GRADES TO WHICH THE IMPROVEMENT IS TO BE CONSTRUCTED ARE SHOWN ON PLANS AND PROFILES. GRADE POINTS FOR TOP OF CURB, CENTER LINE OF STREETS OR CENTERLINE OF ALLEYS ARE SHOWN BY CIRCLES OR PROFILES AT ALL POINTS BETWEEN DESIGNATED POINTS. THE GRADE SHALL BE ESTABLISHED SO AS TO CONFORM TO A STAIRWAY LIKE GRADE BETWEEN SAID DESIGNATED POINTS.
- THE PRIVATE ENGINEER SHALL FURNISH THE DEPARTMENT OF PUBLIC WORKS WITH GRADE SHEETS AND STATIONING FOR ALL HOUSE LATERALS AND "Y" OR "T" BRANCHES AND SHALL PROVIDE STAKES FOR THEM AT THEIR PROPER LOCATIONS WITH STATIONING PLAIN MARKS. ALL HOUSE LATERALS SHALL BE CONSTRUCTED IN A STRAIGHT ALIGNMENT AT RIGHT ANGLES FROM THE MAIN LINE SEWER EXCEPT AS SHOWN ON THE PLANS. HOUSE LATERALS FROM CONCRETE WALL MANHOLES SHALL BE MADE AT AN ANGLE OF SEE WALKS. NO MAIN LINE SEWER. ANY CHANGE IN ALIGNMENT SHALL BE REQUESTED BY WRITING AT THE PRIVATE ENGINEER'S OFFICE.
- THE PRIVATE ENGINEER SHALL FURNISH THE HOUSE LATERAL DEPTH AT THE PROPERTY LINE BELOW THE TOP OF CURB ELEVATION FOR EACH HOUSE LATERAL ON THE GRADE SHEET.
- BEFORE WORK CAN BE STARTED, THE CONTRACTOR MUST OBTAIN A PERMIT TO EXCAVATE IN COUNTY STREETS FROM THE CONSTRUCTION DIVISION OF THE LOS ANGELES DEPARTMENT OF PUBLIC WORKS, OFFICE NO. 800 AND PAY A FEE TO THE DIRECTOR OF PUBLIC WORKS, 800 S. FREETOWN AVE., ALHAMBRA, CALIF. 91803 - 5TH FLOOR TO COVER THE COST OF CONSTRUCTION INSPECTION AND RECORD PLANS.
- IF WORK IS TO COVER IN A STATE HIGHWAY, A PERMIT MUST BE OBTAINED FROM THE STATE OF CALIFORNIA, DIVISION OF HIGHWAYS, 120 SOUTH SPRING STREET, LOS ANGELES, CALIFORNIA.
- APPROVAL OF THIS PLAN BY THE COUNTY OF LOS ANGELES DOES NOT CONSTITUTE A REPRESENTATION AS TO THE ACCURACY OF THE LOCATION OF OR THE EXISTENCE OR NON-EXISTENCE OF ANY UNDERGROUND UTILITY PIPE OR STRUCTURE WITHIN THE LIMITS OF THIS PROJECT. THIS NOTE APPLIES TO ALL PAGES.
- REFER TO SECTION 306-1.4 OF THE STANDARD SPECIFICATIONS REGARDING SAFETY GREENS.
- PRIOR TO THE RESUMPTION OF THE REQUIRED SEWER CONSTRUCTION PERMIT, THE CONTRACTOR SHALL OBTAIN AND FILE WITH THE DEPARTMENT OF PUBLIC WORKS COPIES OF A PERMIT TO EXCAVATE IN COUNTY STREETS FROM THE DEPARTMENT OF PUBLIC WORKS, A PERMIT TO EXCAVATE IN STATE HIGHWAYS FROM THE STATE OF CALIFORNIA, DIVISION OF HIGHWAYS, AND A CERTIFICATE OF NECESSARY CONSTRUCTION PERFORMANCE FROM THE DEPARTMENT OF PUBLIC WORKS, 800 S. FREETOWN AVE., ALHAMBRA, CALIF. 91803 - 5TH FLOOR. NAMED AS THE CONTRACTOR'S HOUSE TO BE SET TO GIVE PRIOR TO CANCELLATION OF PERMIT.

**CONSTRUCTION NOTES:**

- WORK SHALL BE CONSTRUCTED ACCORDING TO THE STANDARD SPECIFICATIONS FOR PUBLIC WORKS CONSTRUCTION SPECIFICATION LATEST EDITION AND THE STANDARD SPECIFICATIONS FOR PUBLIC WORKS CONSTRUCTION SPECIFICATION LATEST EDITION DATED JULY 31, 1988 AND SHALL BE PROTECTED ONLY IN THE PRESENCE OF THE DEPARTMENT OF PUBLIC WORKS.
- THE CONTRACTOR SHALL NOTIFY THE CONSTRUCTION DIVISION BY TELEPHONE (818) 488-3121 AT LEAST 24 HOURS BEFORE EXCAVATING ANY WORK UNDER THE CONTRACT.
- HOUSE LATERALS TO BE CONSTRUCTED WITH INVERTS AT PROPERTY LINE 8 FEET BELOW CURB GRADE EXCEPT AS NOTED.
- WYE OR TEE BRANCHES MAY BE USED FOR CONNECTIONS TO MANHOLE SEWERS EXCEPT AS NOTED.
- ALL STRUCTURES SHALL BE EITHER BRICK MANHOLES PER A.P.W.A. STD. PLAN NO. 203-0-8 OR PRECAST CONCRETE MANHOLES PER L.A.C.D. STD. PLAN NO. 203-0-4 EXCEPT AS NOTED.
- MANHOLE STAKES ON THE PROPERTY LINE PROVIDED AT RIGHT ANGLES TO THE SEWER LINE AT THE CENTER LINE OF EACH MANHOLE.
- MANHOLE TOPS IN UNIMPROVED PORTIONS OF WAY TO BE BE SET ABOVE FINISHED GRADE.
- MINIMUM 4" VCP JOINTS SHALL BE USED FOR 8" VCP PER STANDARD SPECIFICATION SECTION 306-1.2.
- IF A POWER POLE IS WITHIN THREE FEET OF THE SEWER, THE SEWER SHALL BE ENCASED PER L.A.C.D. STD. PLAN NO. 203-0-4, CASE 2, TWO FEET ON EACH SIDE FROM THE POINT OF INTERFERENCE.
- BEFORE THE COURSE CONSTRUCTION IT IS DETERMINED THAT THERE IS LESS THAN FOUR FEET OF COVER OVER THE TOP OF A MAIN LINE OF HOUSE LATERAL, W.C.P. SEWER WHICH IS NOT LOCATED ON THE PLANS, THE PIPE SHALL BE ENCASED PER L.A.C.D. STD. PLAN NO. 203-0-4, CASE 1, UNLESS OTHERWISE APPROVED BY THE DIRECTOR OF PUBLIC WORKS.
- ALL JOINTS BETWEEN CAST IRON PIPE AND WYPPED CAST IRON PIPE SHALL BE MADE WITH A RUBBER GASKET JOINT. TYPE "C" OR "D" WITH BUSHING IF NECESSARY FOR STANDARD SPECIFICATIONS SECTION 306-1.2.
- SEWERS TO BE TESTED FOR LEAKAGE PER SECTION 306-1.4 OF THE STANDARD SPECIFICATIONS AND SPECIAL PROVISIONS.
- RESURFACE ALL TRENCHES WITHIN PAVED AREAS TO MEET LOS ANGELES COUNTY PUBLIC WORKS OR CALIFORNIA STATE HIGHWAY REQUIREMENTS IN ACCORDANCE WITH PERMITS.
- FULL COMPLIANCE WITH SECTION 306-1.2 OF THE STANDARD SPECIFICATIONS WILL BE REQUIRED FOR BACKFILL IN STREETS. DETERMINATION OF BACKFILL COMPOSITION AND SAND EQUIVALENTS BY A QUALIFIED REGISTERED GEOTECHNICAL LABORATORY SHALL BE PROVIDED BY THE CONTRACTOR PRIOR TO THE RESUMPTION OF CONSTRUCTION.
- SPECIAL MANHOLE IN EXISTING CONSTRUCTION (A) BACKFILL WITHIN AND REPLACE COVER EARTH SO AS TO ACHIEVE THE NATURAL OR FINISHED GRADES AND SLOPES SHOWN ON THE GRADING PLAN APPROVED FOR THIS PROJECT BY THE LAND RECLAMATION DIVISION (B) ALL SLOPES AND EARTH REPAIR SHALL BE COMPACTED TO A MINIMUM OF 90% OF MAXIMUM DENSITY PER ASTM STD. METHOD OF TEST D959. ALL ACCEPTABLE DETERMINATION OF SUCH CONTRACTOR SHALL BE SUBMITTED TO THE CONSTRUCTION DIVISION, PUBLIC WORKS DEPARTMENT.
- ALL WYES AND/OR HOUSE LATERALS ARE TO BE LOCATED AT LEAST FIVE FEET APART AND NOT CLOSER THAN FIVE FEET TO ANY MANHOLE.

TO BE CONSTRUCTED IN **TRACT NO. 46564-02**  
**PRIVATE CONTRACT NO. 11347**

INDEX: 1293/1332  
 2 SHEETS; ... 4 PAGES

SCALE: VERT. 1" = 8'  
 HORIZ. 1" = 40'  
 DECEMBER, 1996

PREPARED IN THE OFFICES OF  
**LAND DESIGN CONSULTANTS, INC.**  
 225 So. Lake Ave., Suite 600 Pasadena, California 91101  
 P.H. (818) 578-7000 FAX (818) 578-7373

BY: *Robert M. Stone*  
 REG. C.E. NO. 21649 EXP. 9-30-97

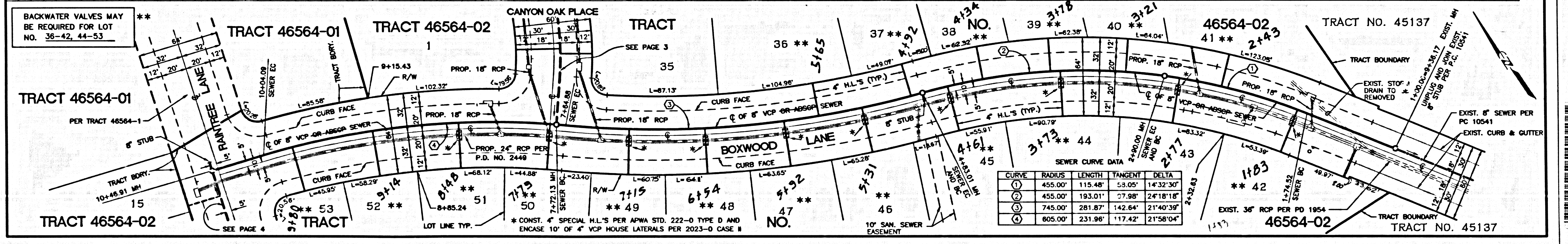
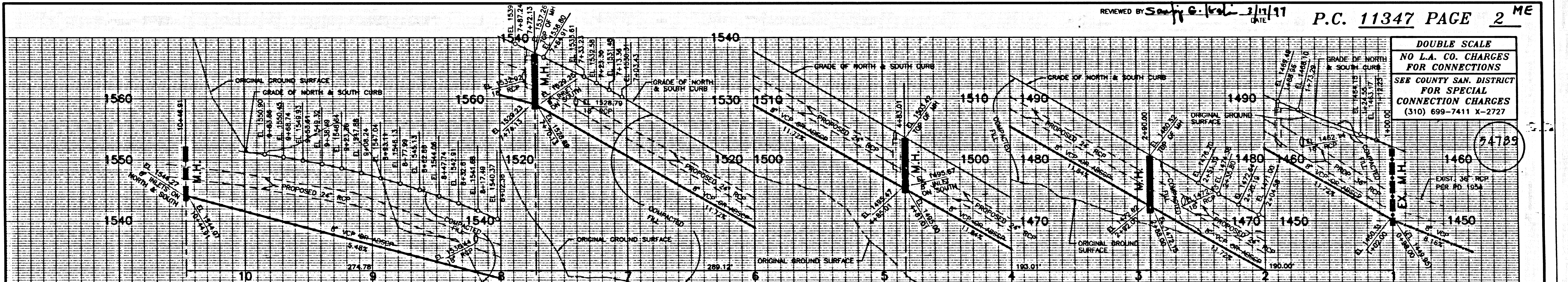
THE FOLLOWING LATEST REVISED STANDARD PLANS ON FILE IN THE OFFICE OF THE PUBLIC WORKS SHALL APPLY IN THE CONSTRUCTION OF THIS PROJECT:

LEGEND	2000-0
MINIMUM PUBLIC SAFETY REQUIREMENTS	6000-0
BRICK MANHOLE	2021-0
STANDARD MANHOLE STEP	2015-0
BEDDING FOR SEWER PIPE	2021-0
CRADLING AND ENCASEMENT	2023-0
WYE OR TEE SUPPORT	2024-0
ALLOWABLE TRENCH WIDTHS	2027-0
LOCKING MANHOLE FRAME AND COVER	2010-0
NON-REINFORCED PRECAST CONCRETE MANHOLE	2001-0
SPECIAL HOUSE LATERALS	2010-0
EROSION PROTECTION IN STEEP SLOPES	2028-0
ANCHOR BLOCKS	4221-0

\* REFERS TO A.P.W.A. STD. DRAWING NO.  
**COUNTY OF LOS ANGELES, CALIFORNIA**

HARRY W. STONE  
 DIRECTOR OF PUBLIC WORKS  
 APPROVED *Thomas Howard* 2/1/97 (DATE)  
 CHECKED *Phil Danner* 2/1/97 (DATE)  
 REG. C.E. NO. 45641 (DATE)  
 SANTA CLARITA BLDG. DIST. 82

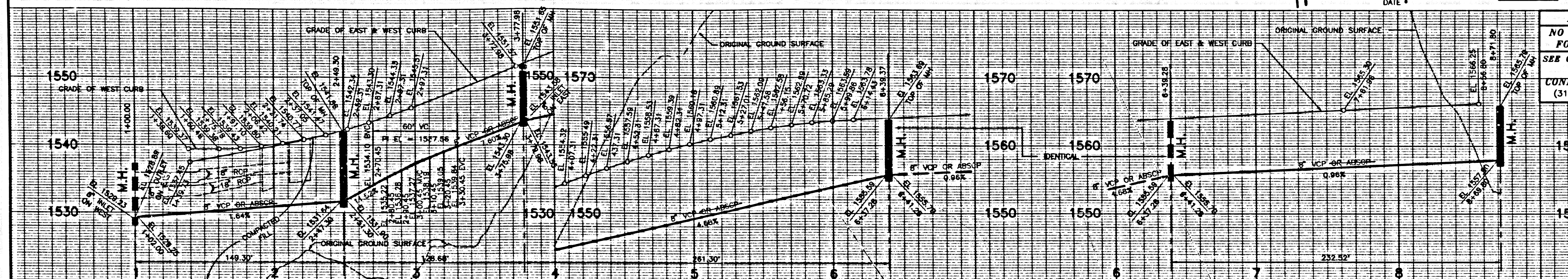
CHARLES W. CARRY  
 CHIEF ENGINEER  
 CO. SAN DIST. NO. 28  
 APPROVED *William S. ...* 2/1/97 (DATE)  
 OFFICE ENGINEER



TRACT .09 SO-10204 .01 FT

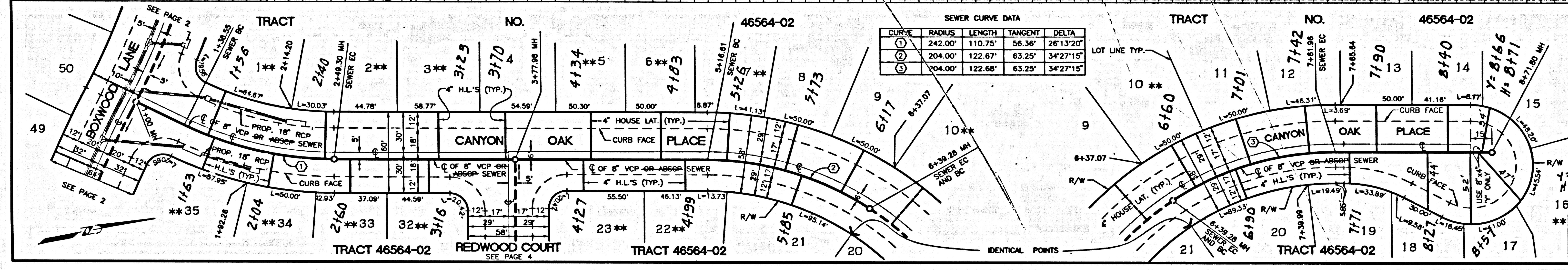
C:\WP70\11347-PLANES\WP70 02/12/97 16:09



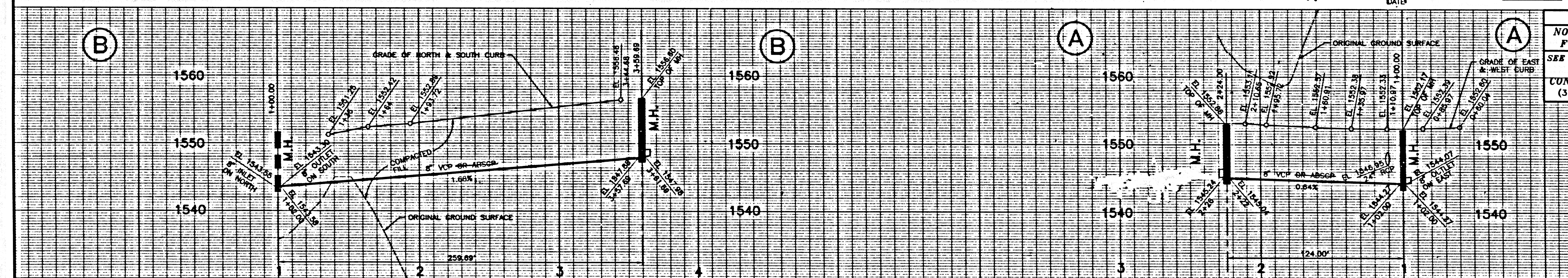


DOUBLE SCALE  
NO L.A. CO. CHARGES  
FOR CONNECTIONS  
SEE COUNTY SAN. DISTRICT  
FOR SPECIAL  
CONNECTION CHARGES  
(310) 699-7411 X-2727

54790

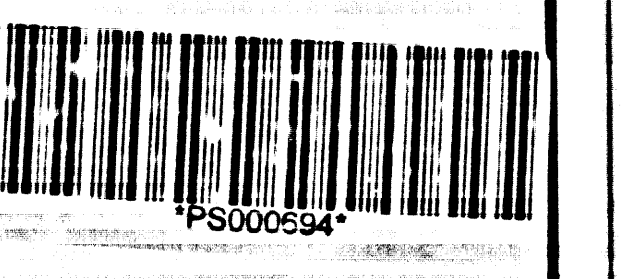
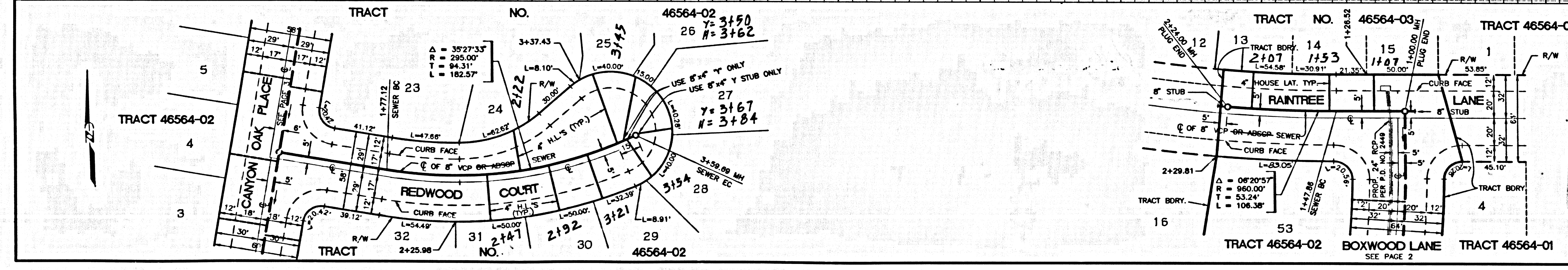


BACKWATER VALVES MAY  
BE REQUIRED FOR LOT  
NO. 1-3, 5-7, 10, 22, 23, 32-35



DOUBLE SCALE  
NO L.A. CO. CHARGES  
FOR CONNECTIONS  
SEE COUNTY SAN. DISTRICT  
FOR SPECIAL  
CONNECTION CHARGES  
(310) 699-7411 X-2727

54791



C:\PDS\001\103\1033-1-P.DWG 08/07 01/11/07 10:37

CAPIT. C.9 50-103304.01.PT