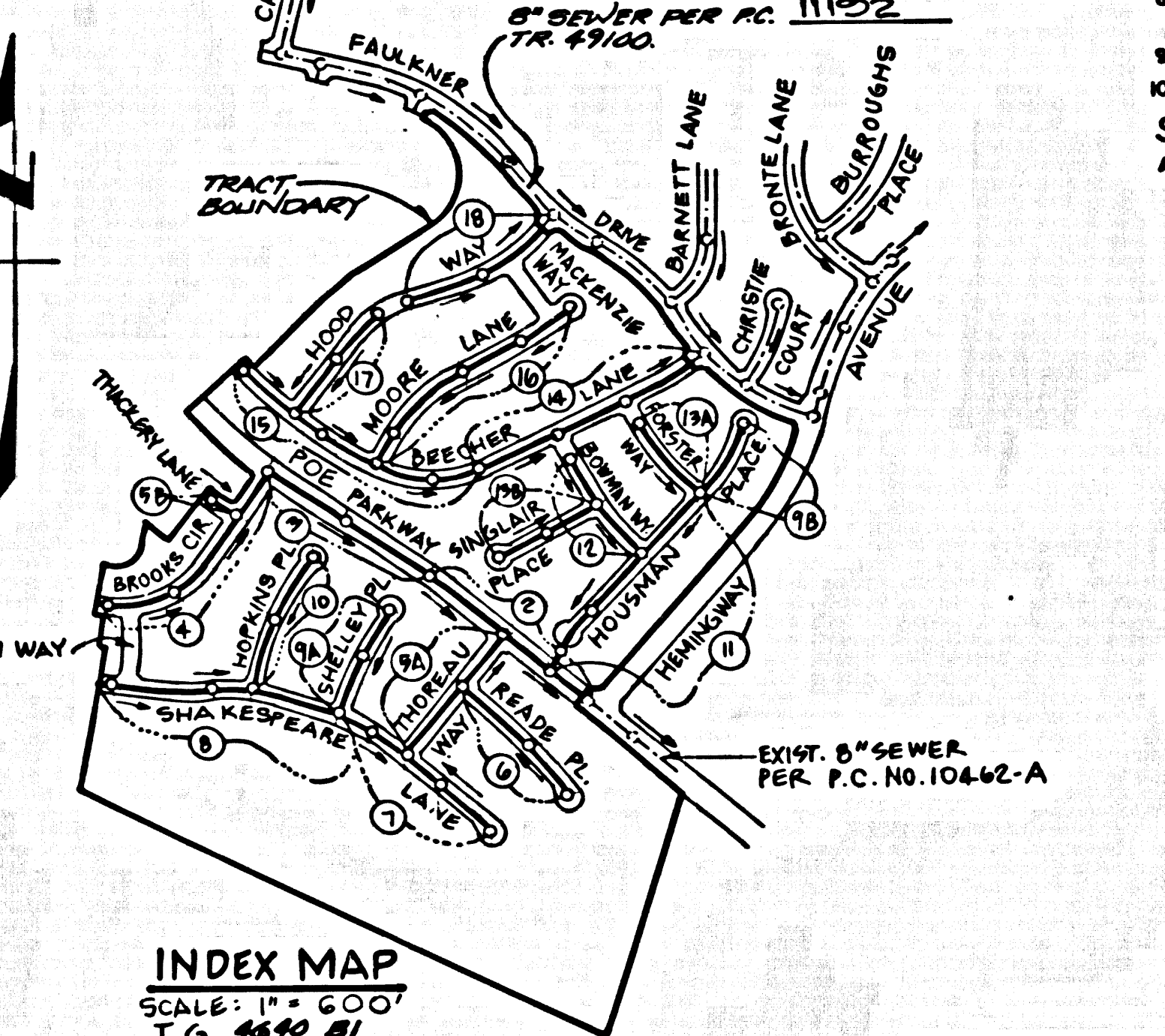


B.M. CL 4233 ELEV. 1281.000
 ROOM TAG IN N. CEDAR DEAN
 ROWY, 42 FT. N & 130 FT. W. E.
 INT. SINGING HILLS ROAD T.S.
 NEWHALL QUAD. 19 83

NO CONNECTION FOR THE DISPOSAL OF INDUSTRIAL WASTE SHALL
 BE MADE TO SEWERS SHOWN ON THESE DRAWINGS UNTIL A PERMIT
 FOR INDUSTRIAL WASTEWATER DISCHARGE HAS BEEN ISSUED BY THE
 SANITATION DISTRICTS FOR SAID CONNECTION

BEFORE BREAKING INTO OR CONSTRUCTION ON A COUNTY SANITATION
 DISTRICT SEWER AND PRIOR TO FINAL ACCEPTANCE OF THE PROJECT,
 A SANITATION DISTRICT INSPECTOR SHALL BE NOTIFIED BY PHONE
 AT (800) 268-4683 SO THAT REQUIRED INSPECTIONS CAN BE MADE.



INDEX MAP
 SCALE: 1" = 500'
 T.G. 1640 81
 P.C. 11359
 TRACT NO. 49760
 NOTE: NUMBERS IN CIRCLES INDICATE PAGE NUMBERS

ABS COMPOSITE PIPE STD. CONSTRUCTION NOTES:

1. FULL COMPLIANCE WITH THE STD. SPECIFICATIONS AND THE SPECIAL PROVISIONS IS REQUIRED FOR THE INSTALLATION OF ABS COMPOSITE PIPE.
2. MANHOLE WATER STOP GASKETS AND CLAMPS ARE REQUIRED FOR THE CONNECT OF ABS COMPOSITE PIPE TO MANHOLE STRUCTURES.
3. ABS SOLID WALL PIPE MUST BE USED FOR WYE AND HOUSE LATERAL CONNECTIONS TO ABS COMPOSITE MAINLINE SEWER PIPE.
4. ABS COMPOSITE PIPE SHALL BE RESED IN CONFORMANCE WITH THE TABLE IN SECTION 306-1.2.1 OF THE SPECIAL PROVISIONS (SEE PAGES 16-41 THROUGH 46-50 OF THIS MANUAL).
5. THREE DEGREE DEFLECTION COUPLERS ARE REQUIRED FOR RADIUS OF CURVATURE LESS THAN 300 FEET WHEN USING 8" ABS COMPOSITE PIPE.
6. NO CONNECTIONS FOR DISPOSAL OF INDUSTRIAL WASTE IS ALLOWED IF ABS COMPOSITE PIPE IS USED.
7. SEWER LINE CURVATURE SHALL NOT BE ACHIEVED BY PULLING OF JOINTS OR BEVELING PIPE ENDS WHEN USING PLASTIC PIPE INCLUDING ABS COMPOSITE PIPE.
8. ALL WYES AND/OR HOUSE LATERALS ARE TO BE LOCATED AT LEAST FIVE FEET APART AND WHEN POSSIBLE NOT CLOSER THAN FIVE FEET TO ANY MANHOLE.
9. ABS SOLID WALL PIPE IS NOT ACCEPTABLE FOR USE AS MAINLINE SEWER.
10. ONLY WYE BRANCHES ARE TO BE USED FOR CONNECTION TO ABS COMPOSITE MAINLINE SEWER PIPE.

STORMWATER POLLUTION CONTROL REQUIREMENTS FOR SEWER CONSTRUCTION:

1. BEST MANAGEMENT PRACTICES FOR CONSTRUCTION ACTIVITIES
2. EXPOSED SEDIMENTS AND OTHER POLLUTANTS MUST BE RETAINED ON SITE AND MAY NOT BE TRANSPORTED FROM THE SITE VIA SHEETFLOW, SWALES, AREA DRAINS, NATURAL DRAINAGE COURSES.
3. STOCKPILES OF EARTH AND OTHER CONSTRUCTION RELATED MATERIALS MUST BE PROTECTED FROM BEING TRANSPORTED FROM THE SITE BY THE FORCES OF WIND OR WATER.
4. FUELS, OILS, SOLVENTS AND OTHER TOXIC MATERIALS MUST BE STORED IN ACCORDANCE WITH THEIR LISTINGS AND ARE NOT TO CONTAMINATE THE SOIL AND SURFACE WATERS. ALL APPROVED STORAGE CONTAINERS ARE TO BE PROTECTED FROM THE WEATHER. SPILLS MUST BE CLEANED UP IMMEDIATELY AND DISPOSED OF IN A PROPER MANNER. SPILLS MAY NOT BE WASHED INTO THE DRAINAGE SYSTEM.
5. EXCESS OR WASTE CONCRETE MAY NOT BE WASHED INTO THE PUBLIC WAY OR ANY OTHER DRAINAGE SYSTEM. PROVISIONS SHALL BE MADE TO RETAIN CONCRETE WASTES ON SITE UNTIL THEY CAN BE DISPOSED OF AS SOLID WASTE.
6. TRASH AND CONSTRUCTION RELATED SOLID WASTES MUST BE DEPOSITED INTO A COVERED RECEPTACLE TO PREVENT CONTAMINATION OF RUNOFF AND DISPERSAL BY WIND.
7. SEDIMENTS AND OTHER MATERIALS MAY NOT BE TRACKED FROM THE SITE BY VEHICLE TRAFFIC. THE CONSTRUCTION ENTRANCE ROADWAYS MUST BE STABILIZED SO AS TO INHIBIT SEDIMENTS FROM BEING DEPOSITED INTO THE PUBLIC WAY. ACCIDENTAL DEPOSITIONS MUST BE SWEEP UP IMMEDIATELY AND MAY NOT BE WASHED DOWN BY RAIN OR OTHER MEANS.
8. ANY SOIL WITH DISTURBED SOILS OR DENuded OF VEGETATION MUST BE STABILIZED SO AS TO INHIBIT EROSION BY WIND AND WATER.
9. THE FOLLOWING MAPS AS OUTLINED IN, BUT NOT LIMITED TO, THE BEST MANAGEMENT PRACTICE HANDBOOK, CALIFORNIA STORMWATER QUALITY TASK FORCE, SACRAMENTO, CALIFORNIA 1993, OR THE LATEST REVISED EDITION, MAY APPLY DURING CONSTRUCTION (ADDITIONAL MEASURES MAY BE REQUIRED IF DEEMED APPROPRIATE BY COUNTY):
 - ES01 - DETERMINING OPERATIONS
 - ES02 - PRESERVATION OF EXISTING VEGETATION
 - ES10 - SEEDING AND PLANTING
 - ES11 - MULCHING
 - ES20 - GEOTEXTILES AND MATS
 - ES21 - GUEST CONTROLS
 - ES22 - TEMPORARY STREAM CROSSING
 - ES23 - CONSTRUCTION ROAD STABILIZATION
 - ES24 - STABILIZED CONSTRUCTION ENTRANCE
 - ES54 - STORM DRAIN INLET PROTECTION

ISSUE NO. 1111 CONNECTION PERMITS
 UNTIL OUTLET SEWER P.C. 11359 IS
 ACCEPTED FOR PUBLIC USE BY
 L.A. COUNTY

LOTS 290 THRU 292 ARE RESTRICTED TO
 NO CONSTRUCTION OR REDEMPTIONAL
 BUILDINGS AND WILL NOT BE SERVED
 BY THIS SEWER.

GENERAL NOTES:

1. A SEWER CONSTRUCTION PERMIT SHALL BE OBTAINED AND A FEE PAID FOR CONSTRUCTION INSPECTION AND RECORD PLANS TO THE DEPARTMENT OF PUBLIC WORKS AT THE PERMITS DIVISION, 200 SOUTH PLEASANT AVENUE, 5TH FLOOR, ALHAMBRA, AT LEAST 72 HOURS PRIOR TO STARTING WORK UNDER THIS CONTRACT. COPIES OF ALL OTHER REQUIRED PERMITS, SUCH AS ROAD EXCAVATION, CALTRANS, ETC. MUST BE FILED WITH THE PERMIT APPLICATION.
2. PRIOR TO ASSUANCE OF ANY PERMIT, THE CONTRACTOR SHALL FILE A PERMIT FOR EXCAVATIONS AND TRENCHES FROM THE STATE OF CALIFORNIA DIVISION OF INDUSTRIAL SAFETY AND A CERTIFICATE OF WORKERS COMPENSATION INSURANCE WITH THE DEPARTMENT OF PUBLIC WORKS NAMED AS THE CERTIFICATE HOLDER TO BE NOTIFIED 30 DAYS PRIOR TO CANCELLATION OF POLICY.
3. IF WORK IS TO BE DONE IN A STATE HIGHWAY, A PERMIT MUST BE OBTAINED FROM THE STATE OF CALIFORNIA DIVISION OF HIGHWAYS, 130 SOUTH SPRING STREET, LOS ANGELES, CALIFORNIA.
4. WHEN WORK IS WITHIN A CONTRACT CITY, THE CONTRACTOR MUST CONTACT THE DIRECTOR OF PUBLIC WORKS OF THAT CITY TO DETERMINE THE LOCATION TO POST THE INSPECTION FEE.
5. THE CONTRACTOR SHALL CONTACT THE DISTRICT OFFICE LISTED ON THE "APPLICATION FOR CONSTRUCTION PERMIT" TO ARRANGE FOR AN ACCEPTABLE CONSTRUCTION START DATE. ALL SHALL NOTIFY THE CONSTRUCTION DIVISION BY TELEPHONE IMMEDIATELY AT LEAST 72 HOURS BEFORE STARTING ANY WORK UNDER THIS CONTRACT. (FORM 68-2-7-78)
6. APPROVAL OF THIS PLAN BY THE COUNTY OF LOS ANGELES DOES NOT CONSTITUTE A REPRESENTATION AS TO ACCURACY OF THE LOCATION OF OR THE EXISTENCE OR NON-EXISTENCE OF ANY UNDERGROUND UTILITY PIPE OR STRUCTURE WITHIN THE LIMITS OF THIS PROJECT. THIS NOTE APPLIES TO ALL PAGES.
7. ALL WORK SHALL BE IN ACCORDANCE WITH THE "STANDARD SPECIFICATIONS FOR PUBLIC WORKS CONSTRUCTION, 1988 EDITION" INCLUDING SUPPLEMENTS AND THE SPECIAL PROVISIONS FOR THE CONSTRUCTION OF SANITARY SEWERS, DATED JULY 31, 1988, AND SHALL BE PROSECUTED ONLY IN THE PRESENCE OF THE DEPARTMENT OF PUBLIC WORKS PERSONNEL.
8. THE CONTRACTOR'S ATTENTION IS DIRECTED TO SECTION 306-1.1 OF THE STANDARD SPECIFICATIONS FOR PUBLIC WORKS CONSTRUCTION IN REGARD TO SAFETY ORDERS AND SHALL CONFORM TO THE "MINIMUM PUBLIC SAFETY REQUIREMENTS" AS SHOWN ON LOS ANGELES DEPARTMENT OF PUBLIC WORKS' STANDARD 8-2.
9. ELEVATIONS ARE IN FEET ABOVE U.S.C. & G.S. SEA LEVEL DATUM OF 1929.
10. NO REVISIONS SHALL BE MADE IN THESE PLANS WITHOUT THE APPROVAL OF THE DIRECTOR OF PUBLIC WORKS.
11. NO REPRESENTATIVE OF THE DEPARTMENT OF PUBLIC WORKS WILL SURVEY OR LAY OUT ANY PORTION OF THE WORK.
12. GRADES TO WHICH THIS IMPROVEMENT IS TO BE CONSTRUCTED ARE SHOWN ON PLANS AND PROFILES. GRADE POINTS FOR TOP OF CURBS, CENTERLINE OF STREETS OR CENTERLINE OF ALLEYS ARE SHOWN BY CIRCLES ON PROFILES AT ALL POINTS BETWEEN DESIGNATED POINTS. THE GRADE SHALL BE ESTABLISHED SO AS TO CONFORM TO A STRAIGHT LINE DRAWN BETWEEN SAID DESIGNATED POINTS.
13. THE OWNER'S ENGINEER SHALL FURNISH THE DEPARTMENT OF PUBLIC WORKS WITH GRADE SHEETS AND STATIONING FOR ALL HOUSE LATERALS AND "ON" IT BRANCHES AND SHALL PROVIDE STAKES FOR THEM AT THEIR PROPER LOCATIONS WITH STATIONING PLAINLY AND LEGIBLY MARKED. THE SEWER SHALL BE CONSTRUCTED IN A STRAIGHT ALIGNMENT AT RIGHT ANGLES FROM THE MAIN LINE SEWER EXCEPT AS SHOWN ON THE PLANS. HOUSE LATERALS FROM CHIMNEYS SHALL NOT HAVE AN ANGLE OF LESS THAN 45° WITH THE MAIN SEWER. ANY CHANGE IN ALIGNMENT SHALL BE REQUESTED IN WRITING BY THE PRIVATE ENGINEER.
14. THE PRIVATE ENGINEER SHALL FURNISH THE HOUSE LATERAL DEPTH AT THE PROPERTY LINE BELOW THE TOP CURB ELEVATION FOR EACH HOUSE LATERAL ON THE GRADE SHEET.

CONSTRUCTION NOTES:

1. PROVIDE SURVEY STAKES ON THE PROPERTY LINE OR PROPERTY LINES PRODUCED AT RIGHT ANGLES TO THE SEWER LINE AT THE CENTERLINE OF THE PROPERTY LINE.
2. IF A POWER POLE IS WITHIN THREE FEET OF THE SEWER, THE SEWER SHALL BE ENCASED PER STANDARD PLAN 8-8, CASE II TWO FEET ON EACH SIDE FROM THE POINT OF INTERFERENCE.
3. ALL JOINTS BETWEEN CAST IRON PIPE AND VITRIFIED CLAY PIPE SHALL BE MADE WITH A RUBBER BLEVE JOINT, TYPE "D" WITH BUSHING IF NECESSARY PER STANDARD SPECIFICATIONS SECTION 306-2.
4. HOUSE LATERALS TO BE CONSTRUCTED WITH INVERTS AT THE PROPERTY LINE 4 FEET BELOW CURB GRADE EXCEPT AS NOTED.
5. USE OF THE BRANCHES MAY BE USED FOR CONNECTIONS TO EXISTING SEWERS EXCEPT AS NOTED.
6. IF DURING THE COURSE OF CONSTRUCTION, IT IS DETERMINED THAT THERE IS LESS THAN FOUR FEET OF COVER OVER THE TOP OF A MAINLINE OR HOUSE LATERAL V.C.P. SEWER WHICH IS NOT INDICATED ON THE PLANS, THE SEWER SHALL BE ENCASED PER STANDARD PLAN 8-8, CASE II, UNLESS OTHERWISE SPECIFIED BY THE DIRECTOR OF PUBLIC WORKS.
7. ALL STRUCTURES SHALL BE EITHER BRICK OR CONCRETE PER STANDARD PLAN 8-3 OR PRECAST CONCRETE SEWER MANHOLES PER STANDARD PLAN 8-5 OR REINFORCED PRECAST CONCRETE MANHOLES PER STANDARD PLAN 8-4, EXCEPT AS NOTED.
8. REINFORCE ALL TRENCHES WITHIN PAVED AREAS TO MEET LOS ANGELES COUNTY PUBLIC WORKS OR CALIFORNIA STATE HIGHWAY REQUIREMENTS IN ACCORDANCE WITH THE PERMITS.
9. FULL COMPLIANCE WITH SECTION 306-1.3 OF THE STANDARD SPECIFICATIONS SHALL BE REQUIRED FOR BACKFILL IN STREETS, DETERMINATION OF BACKFILL COMPACTING AND EQUIVALENTS BY A QUALIFIED CIVIL ENGINEER SHALL BE PROVIDED BY THE PERMITTEE PRIOR TO THE ISSUANCE OF A CERTIFICATE OF PARTIAL ACCEPTANCE.
10. ALL BACKFILL AND FILL OUTSIDE OF STREET RIGHT OF WAY SHALL BE COMPACTED TO 90% OF MAXIMUM DENSITY AS DETERMINED BY ASTM SOIL COMPACTION TEST D 1557-78 METHOD "D" UNLESS OTHERWISE SPECIFIED. THIS SHALL BE CERTIFIED BY A QUALIFIED CIVIL ENGINEER AND CERTIFIED TO THE DEPARTMENT OF PUBLIC WORKS DIVISION OF THE DEPARTMENT OF PUBLIC WORKS PRIOR TO ACCEPTANCE OF THE WORK BY THE COUNTY.
11. MANHOLE TOPS IN UNIMPROVED PORTIONS OF WAY TO BE 4.0 FEET ABOVE FINISHED GRADE UNLESS OTHERWISE SPECIFIED.
12. SEWERS TO BE TESTED FOR LEAKAGE PER SECTION 306-1.4 OF THE STANDARD SPECIFICATIONS AND SPECIAL PROVISIONS.

SANITARY SEWERS
 TO BE CONSTRUCTED IN
TRACT NO. 49760

PRIVATE CONTRACT NO. 11359
INDEX 1258
 9 SHEETS; 18 PAGES

SCALE: VERT. 1" = 8'
 HORIZ. 1" = 40'
 APRIL 1, 1997
 PREPARED IN THE OFFICES OF
 C.W. CONSULTANTS, INC.
 2005 PLEASANT STREET
 PASADENA, CA 91107 TEL. NO. (818) 683-0430
 BY: *William J. Stone*
 REG. C.E. NO. 13818

THE FOLLOWING LATEST REVISED STANDARD PLANS ON FILE IN THE OFFICE OF THE DEPARTMENT OF PUBLIC WORKS SHALL APPLY IN THE CONSTRUCTION OF THIS PROJECT:

LEGEND	(8-1)	8000-0
MINIMUM PUBLIC SAFETY REQUIREMENTS	(8-1)	8000-0
BRICK MANHOLE	(8-1)	8003-0
REINFORCED PRECAST CONCRETE MANHOLE	(8-1)	8003-0
STANDARD MANHOLE STEP	(8-1)	8003-0
RECORDING FOR SEWER PIPE	(8-1)	8021-0
CHANGING AND INCREMENT	(8-1)	8022-0
WYE OR TEE SUPPORT	(8-1)	8022-0
ALLOWABLE THE WYE WITH	(8-1)	8022-0
LOCKING MANHOLE FRAME AND COVER	(8-1)	8022-0
NON-REINFORCED PRECAST CONCRETE MANHOLE	(8-1)	8022-0
EROSION PROTECTION IN STEEP SLOPES	(8-1)	8022-0
SPECIAL HOUSE LATERAL	(8-1)	8022-0

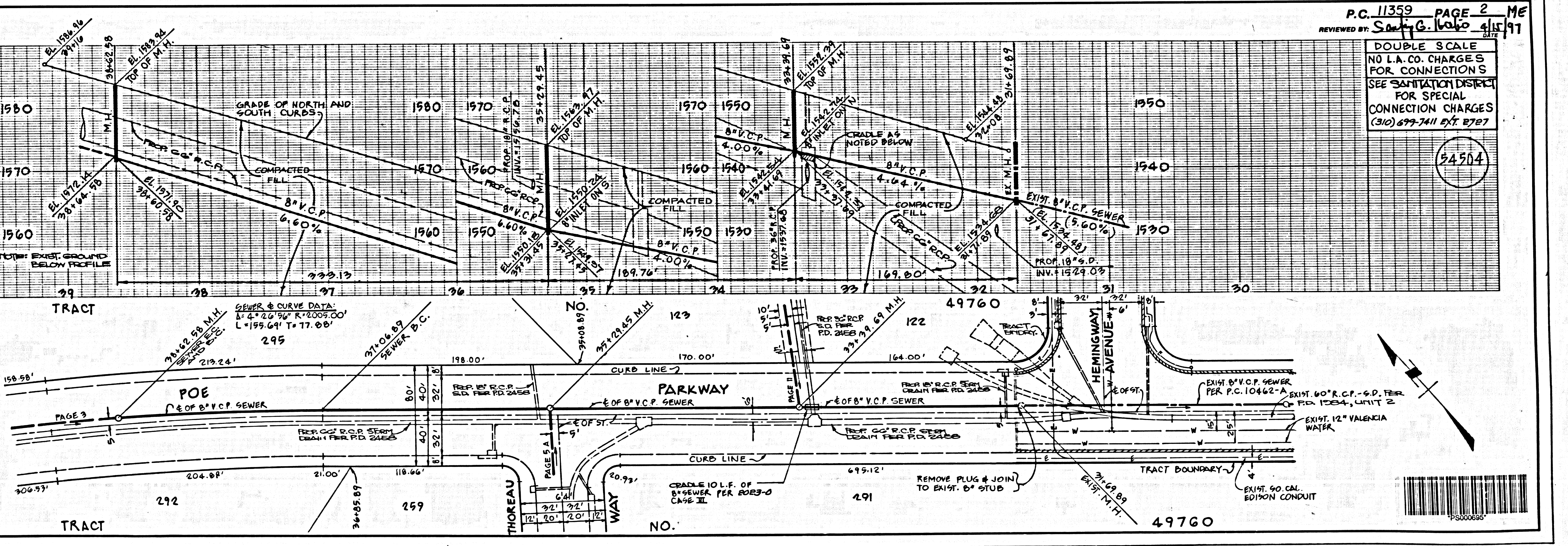
(8-13) - REFERENCE COUNTY SEWER STANDARDS
 PRIOR TO 1972.
 4 - REFERENCE ALPHA STANDARD PLANS.

COUNTY OF LOS ANGELES, CALIFORNIA

HARRY W. STONE
 DIRECTOR OF PUBLIC WORKS

APPROVED: *Thomas J. Stone* 4/1/97
 (DATE) APPROVED: *William J. Stone* 4/1/97
 OFFICE ENGINEER

REVISION NO. 1 DATE 4-21-97
 PRINTED IN ALHAMBRA, CALIFORNIA
 AUTO REVISION GRADES AND VERTICAL
 CURVE BE NUMBER 9747-02-000 E-32-69 04
 APPROVED: *William J. Stone* 4/1/97
 CIVIL ENGINEER REG. NO. 13818



P.C. 11359 PAGE 2 ME
 REVIEWED BY: *Sally G. Lobo* 4/15/97
 DATE

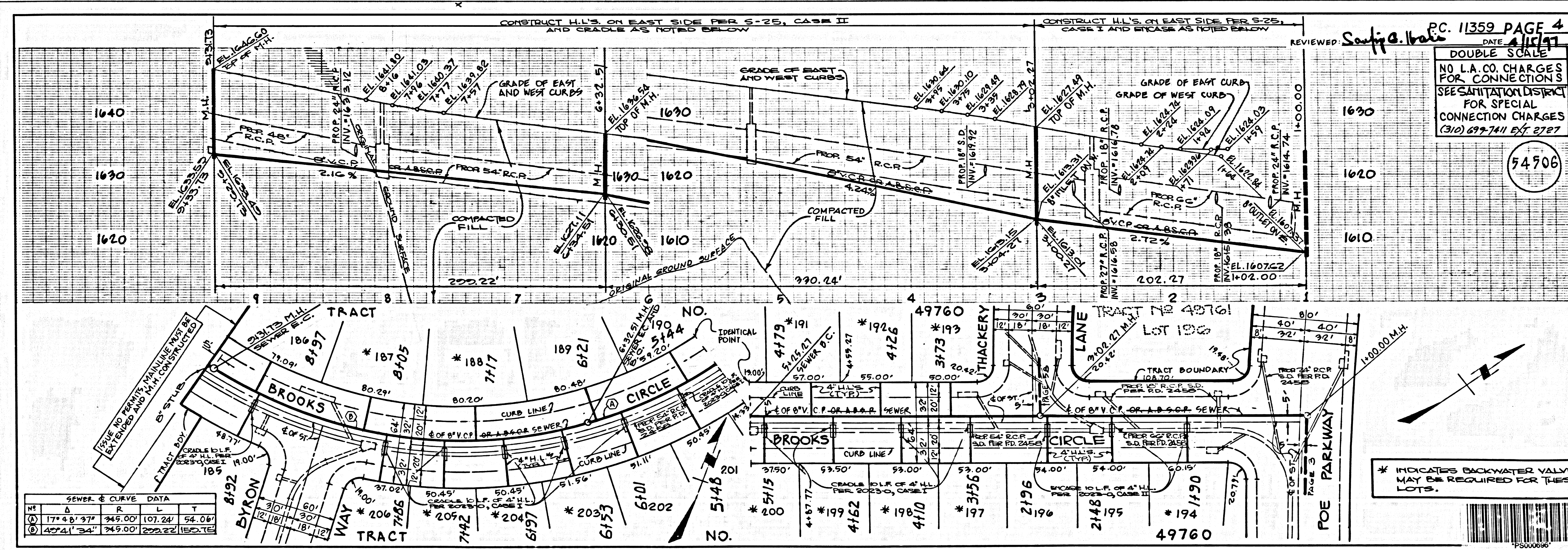
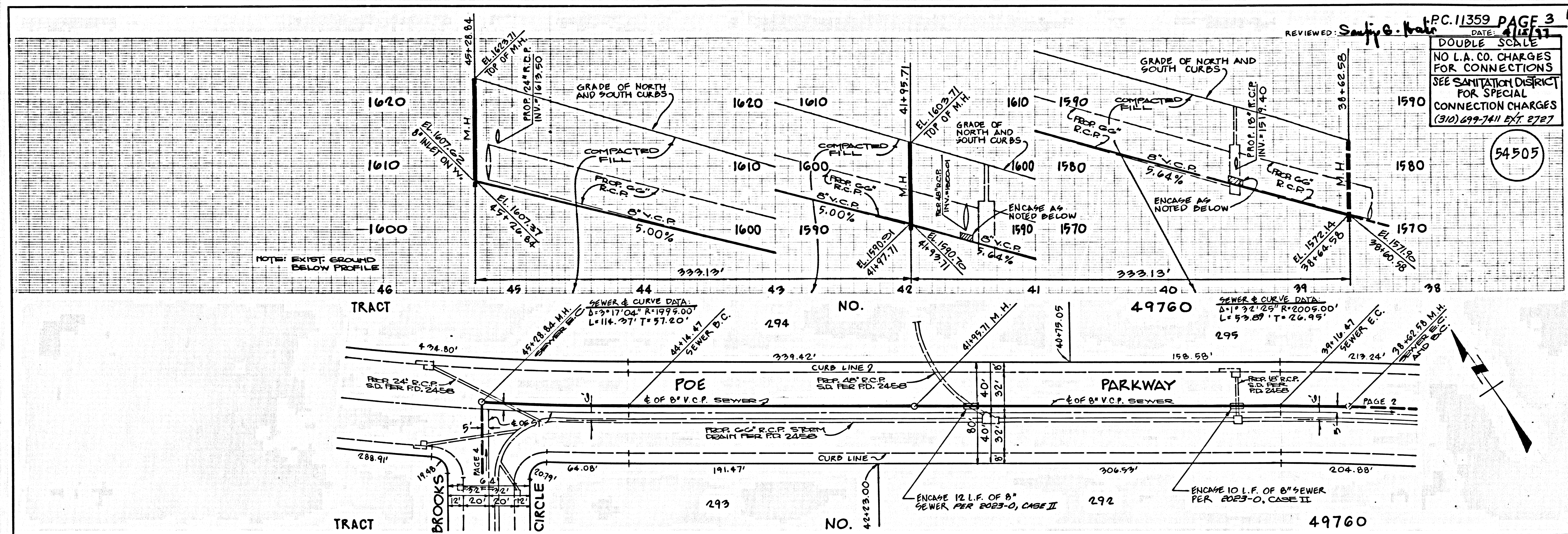
DOUBLE SCALE
 NO L.A. CO. CHARGES
 FOR CONNECTIONS
 SEE SANITATION DISTRICT
 FOR SPECIAL
 CONNECTION CHARGES
 (310) 679-7411 EXT. 8727

94504

1

94211 C
 BC 11359

OSTEP ON TCAART



L.A. COUNTY SEWER SHEET NO. 5 G.M.P. 013 990-9440

PC 11359 PAGE 3

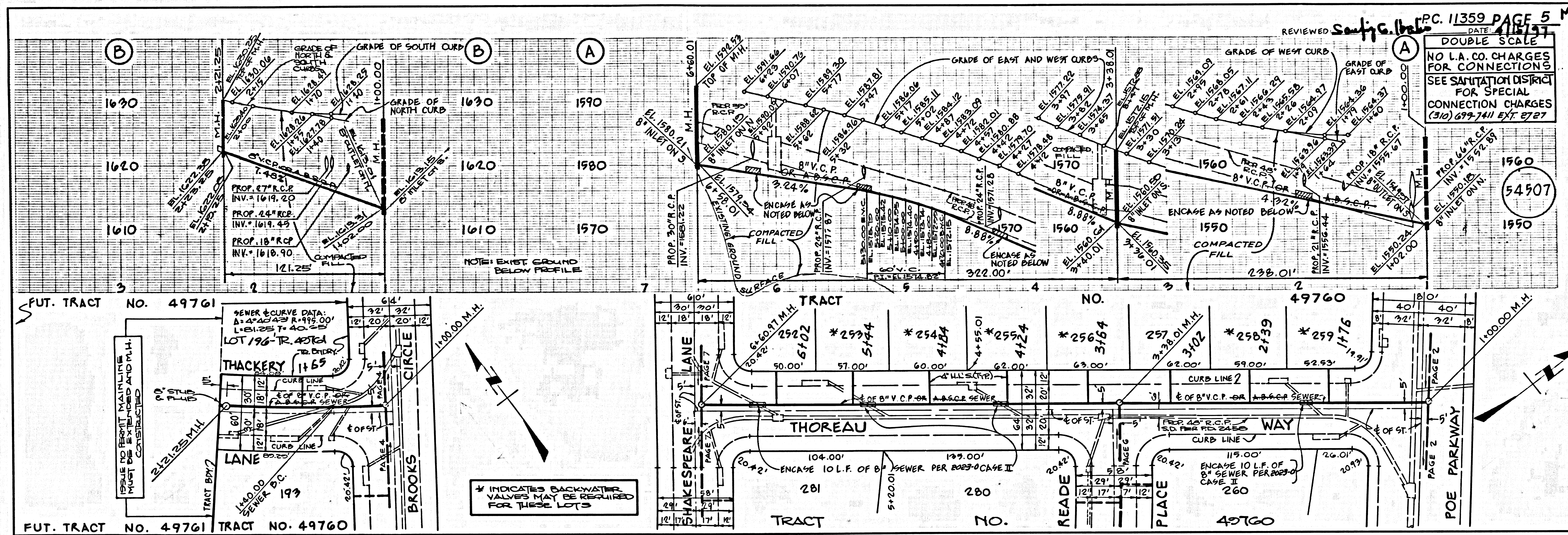
PC 11359 PAGE 4

54505

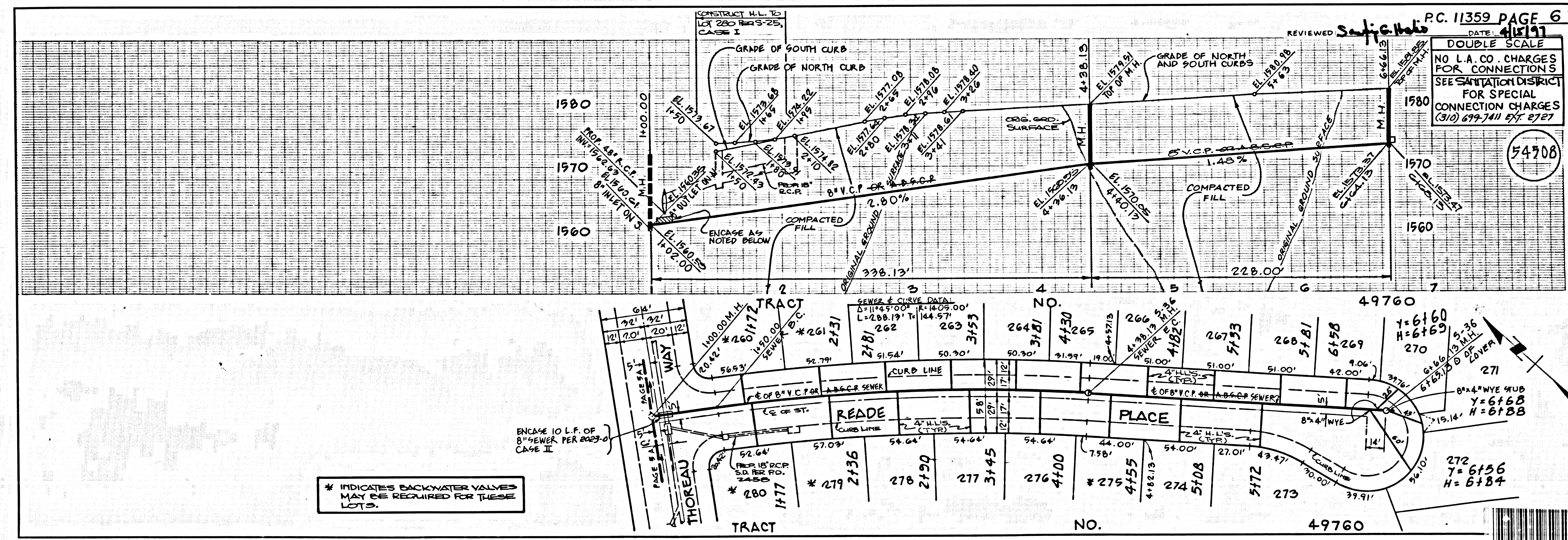
54906

BC 11320

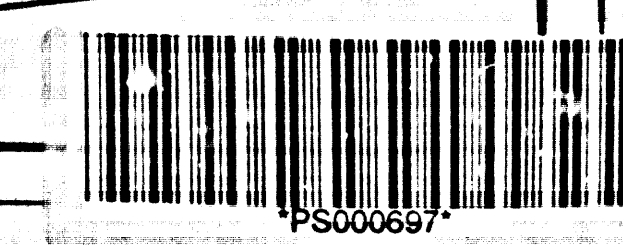
OSTEP ON TRACT



PC. 11359 PAGE 5 ME
DATE 4/18/97
DOUBLE SCALE
NO L.A. CO. CHARGES FOR CONNECTIONS
SEE SANITATION DISTRICT FOR SPECIAL CONNECTION CHARGES (310) 699-7411 EXT 5727
54907

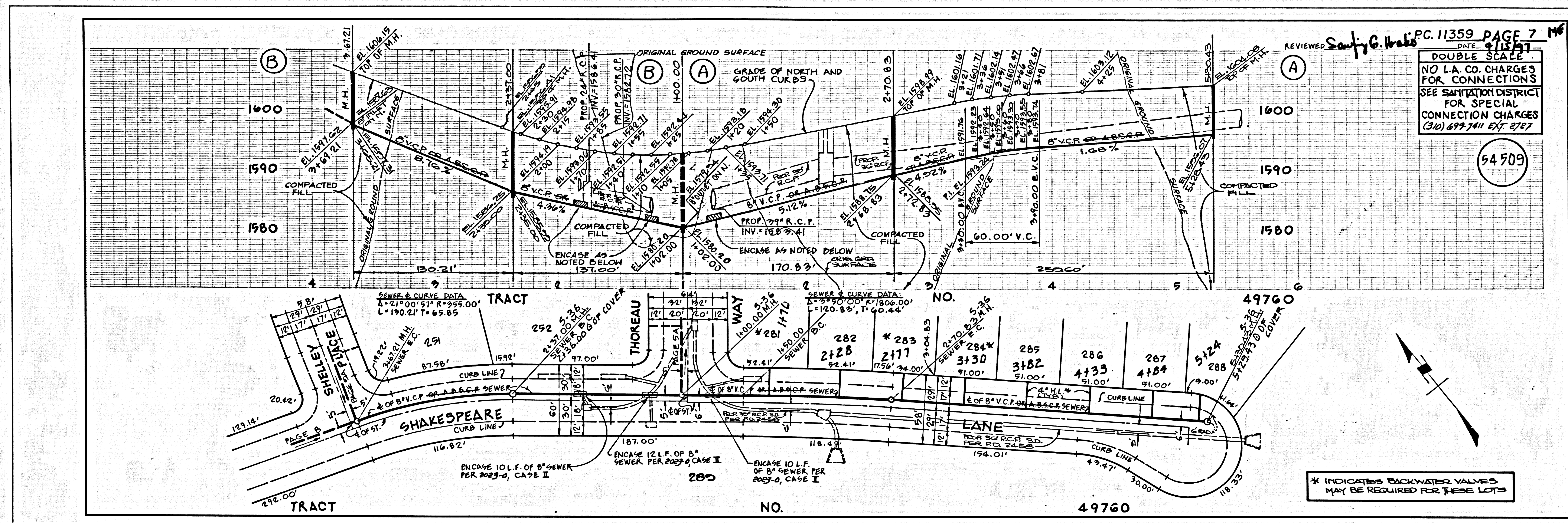


PC. 11359 PAGE 6 ME
DATE 4/18/97
DOUBLE SCALE
NO L.A. CO. CHARGES FOR CONNECTIONS
SEE SANITATION DISTRICT FOR SPECIAL CONNECTION CHARGES (310) 699-7411 EXT 5727
54908



0211 09

0211 ON T/CART



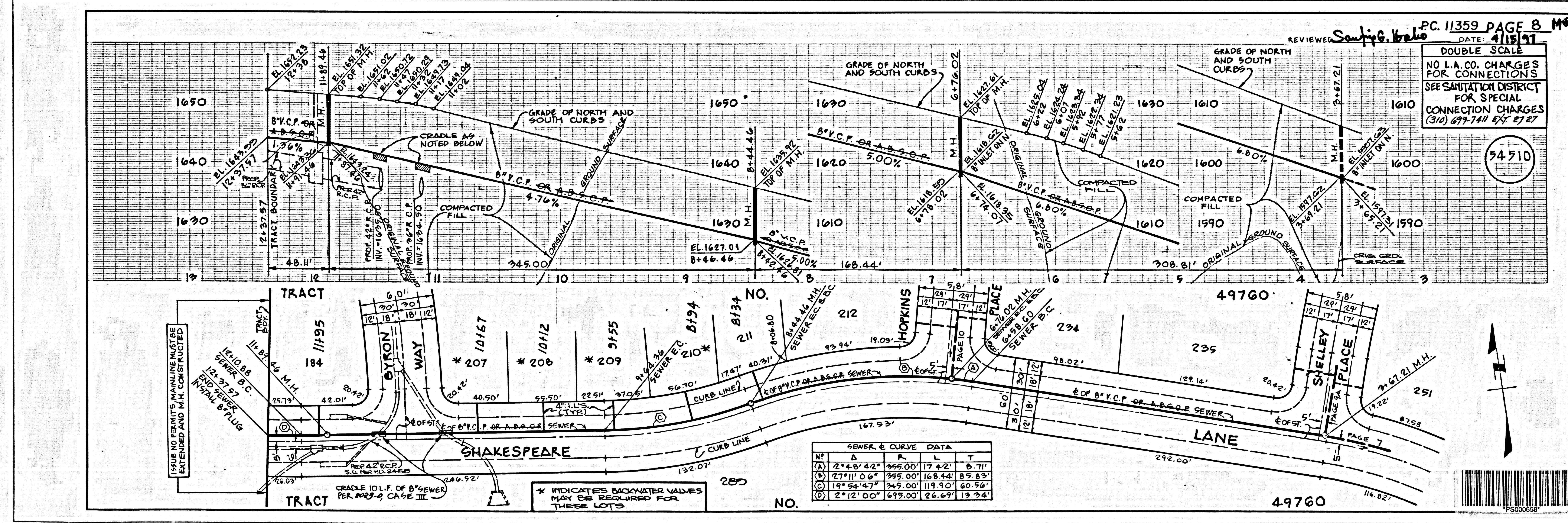
REVIEWED *Saujy G. Hrabec* DATE *4/15/97*
 PC. 11359 PAGE 7 M6
 DOUBLE SCALE
 NO L.A. CO. CHARGES FOR CONNECTIONS
 SEE SANITATION DISTRICT FOR SPECIAL CONNECTION CHARGES
 (310) 697-7411 EXT. 2727

54509

* INDICATES BACKWATER VALVES MAY BE REQUIRED FOR THESE LOTS

④

0211 09



REVIEWED *Saujy G. Hrabec* DATE *4/15/97*
 PC. 11359 PAGE 8 M6
 DOUBLE SCALE
 NO L.A. CO. CHARGES FOR CONNECTIONS
 SEE SANITATION DISTRICT FOR SPECIAL CONNECTION CHARGES
 (310) 697-7411 EXT. 2727

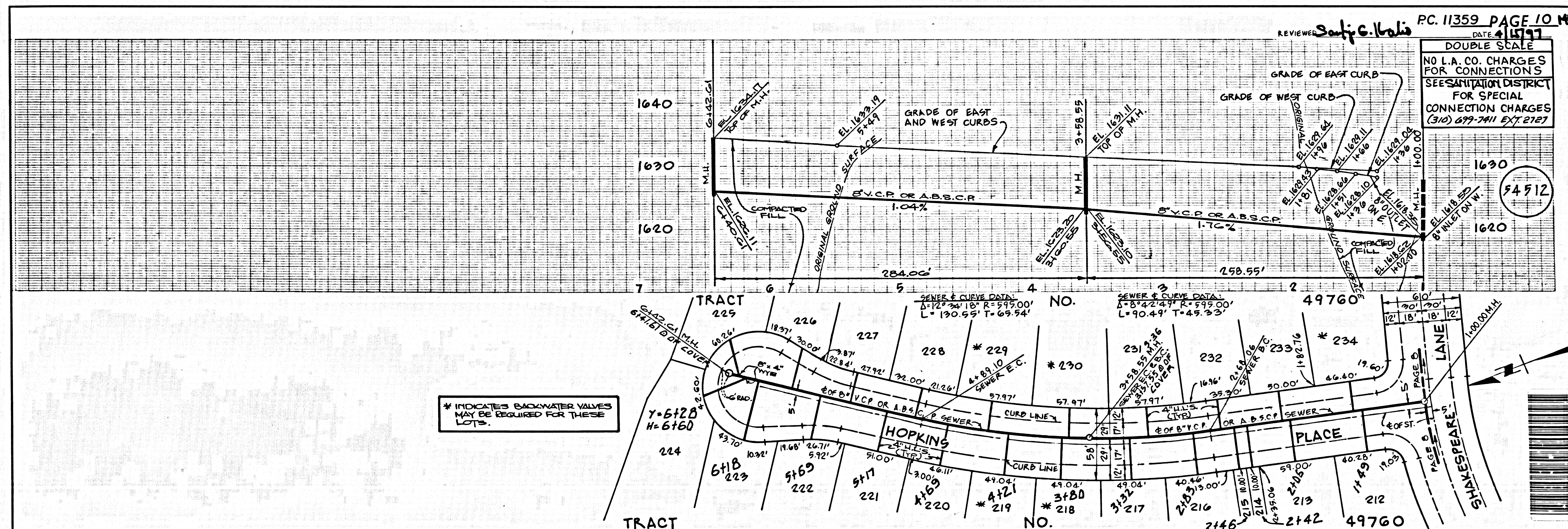
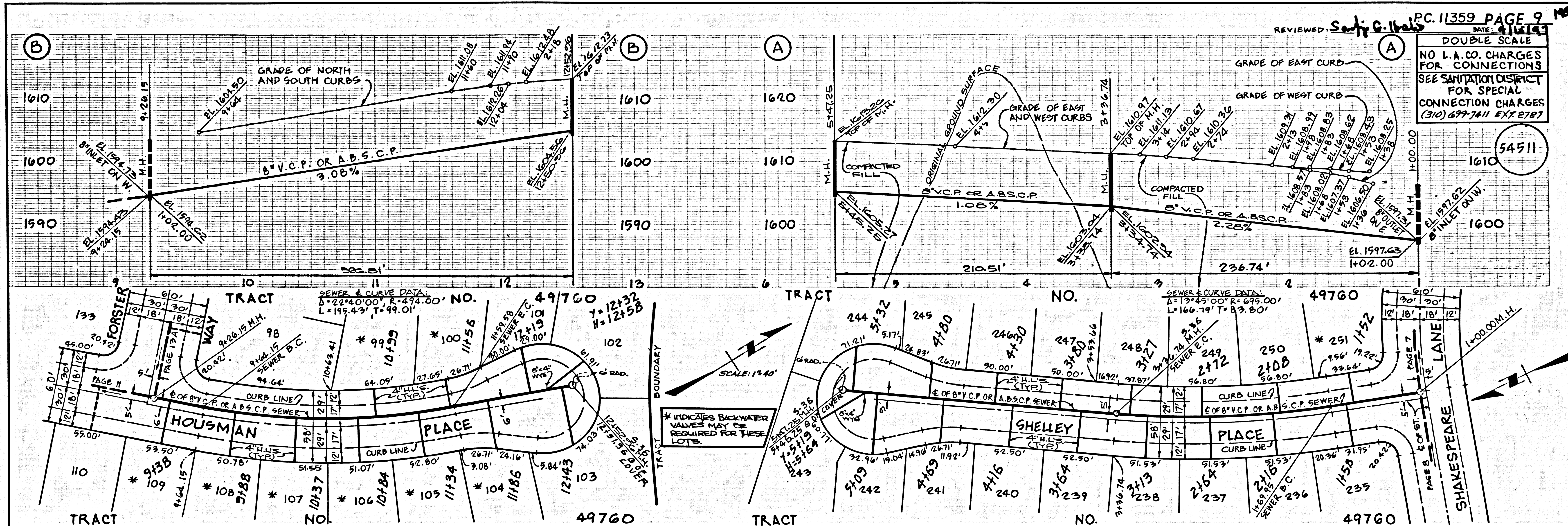
54510

* INDICATES BACKWATER VALVES MAY BE REQUIRED FOR THESE LOTS

NO.	D	R	L	T
(A)	2'4" 0.42°	345.00'	17.42'	8.71'
(B)	2'7" 11.06°	345.00'	16.844'	85.83'
(C)	19" 54.47°	345.00'	119.90'	60.56'
(D)	2'12" 0.0°	647.00'	26.67'	19.34'



02024 ON T2ART

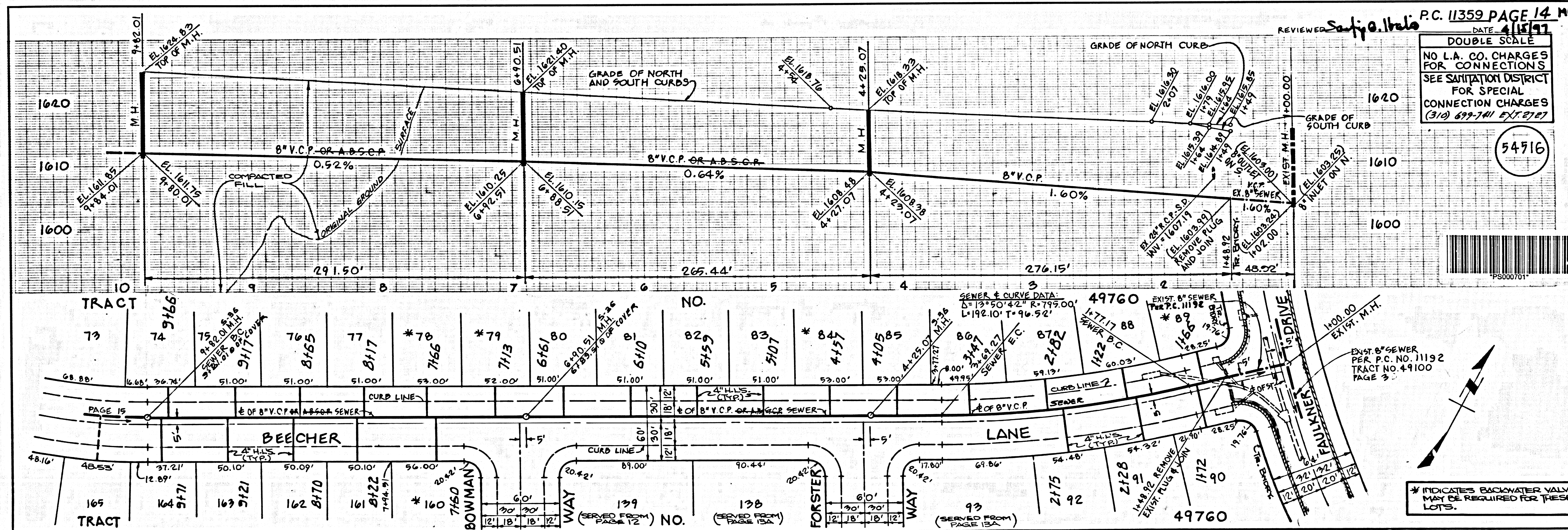
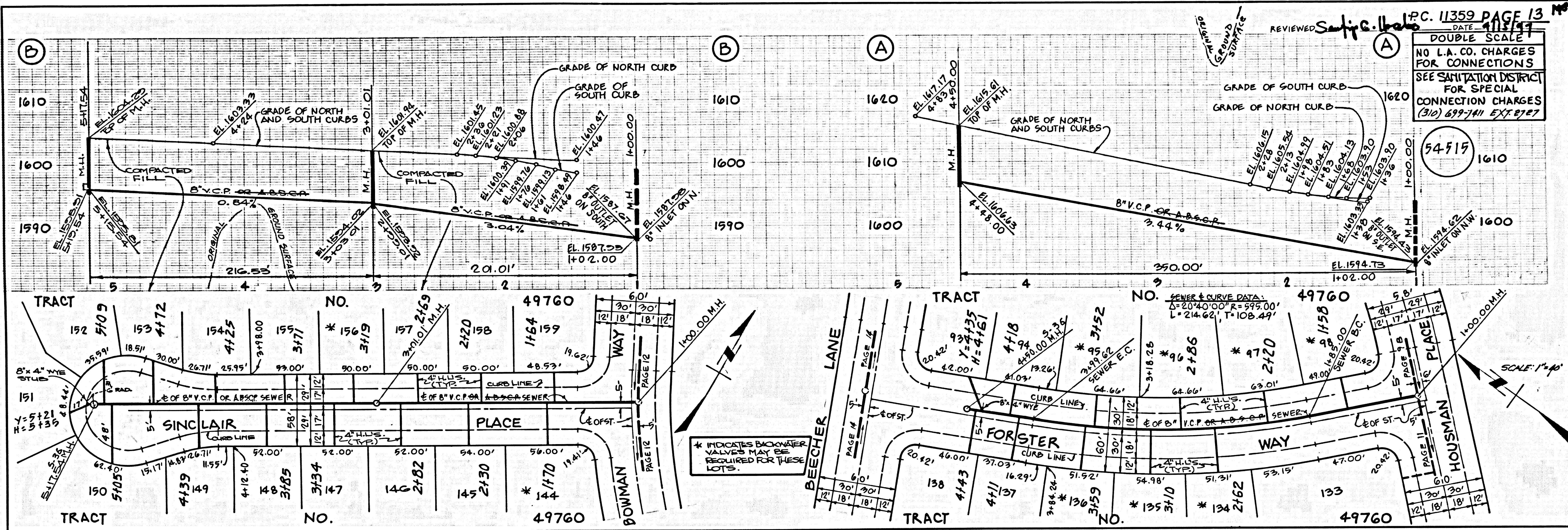


REVIEWED: *Sally C. Hols* DATE: 4/11/97
 PC. 11359 PAGE 9 M#
 DOUBLE SCALE
 NO L.A. CO. CHARGES FOR CONNECTIONS
 SEE SANITATION DISTRICT FOR SPECIAL CONNECTION CHARGES (310) 699-7411 EXT 2787
 54511

REVIEWED: *Sally C. Hols* DATE: 4/11/97
 PC. 11359 PAGE 10 M#
 DOUBLE SCALE
 NO L.A. CO. CHARGES FOR CONNECTIONS
 SEE SANITATION DISTRICT FOR SPECIAL CONNECTION CHARGES (310) 699-7411 EXT 2787
 54912

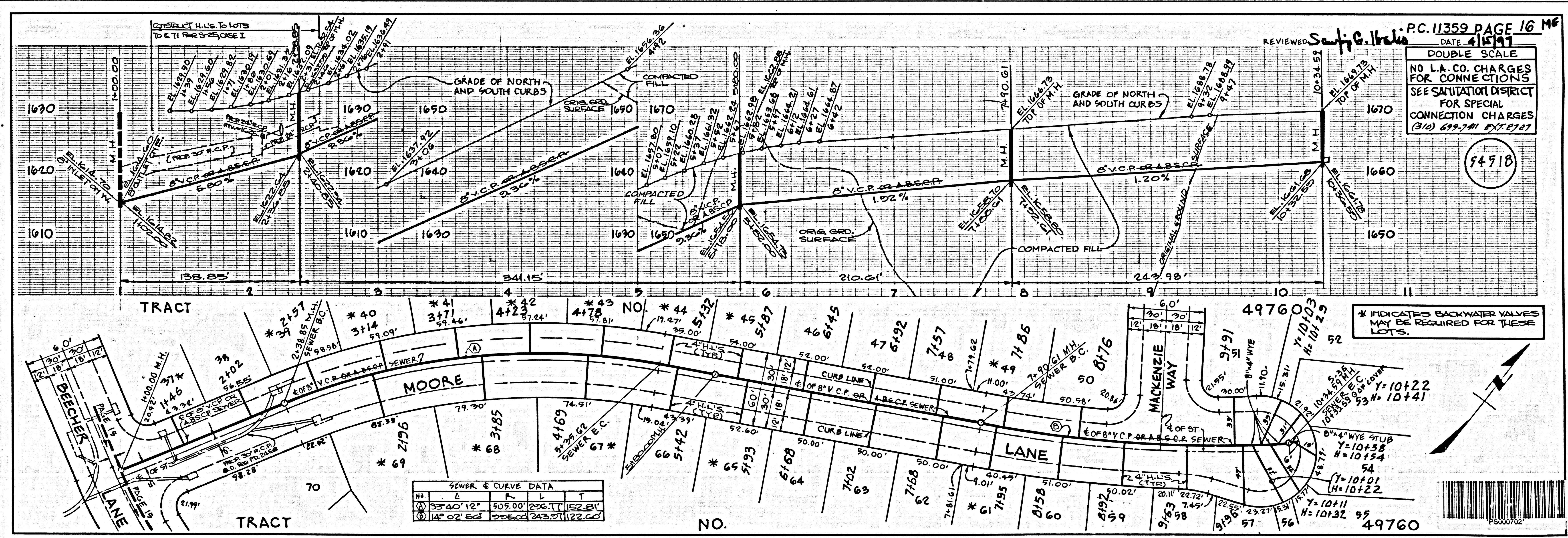
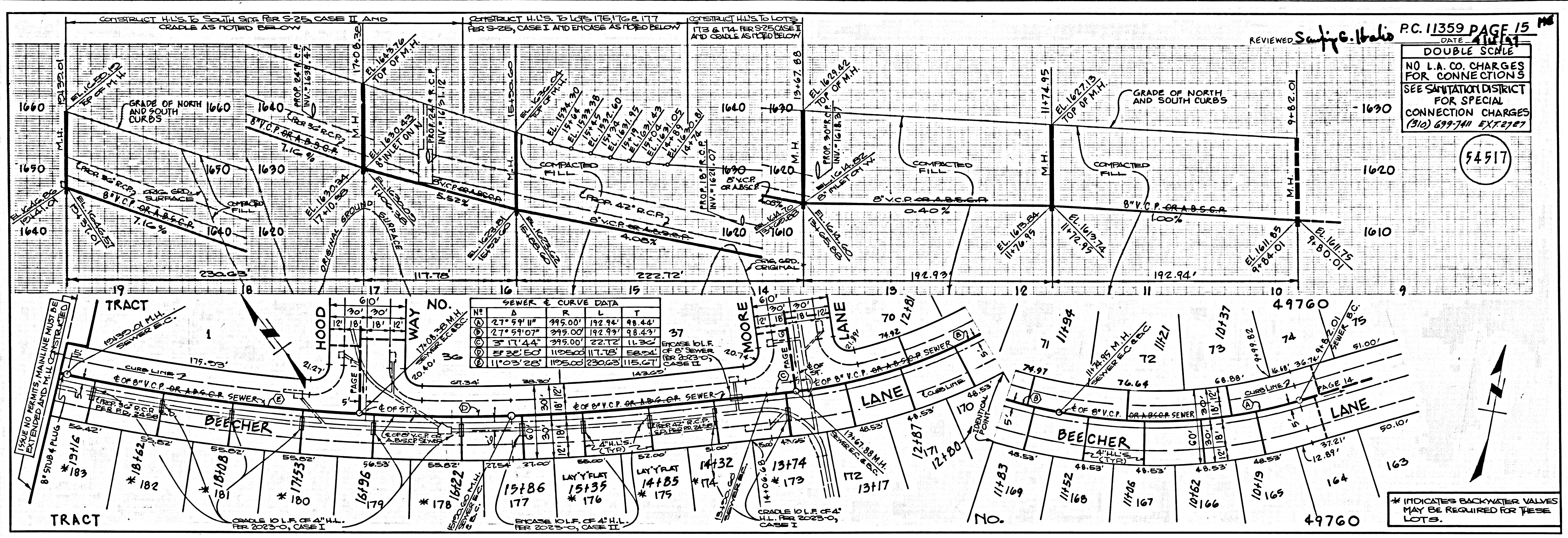
②
 08211 09

08294 ON TRACT



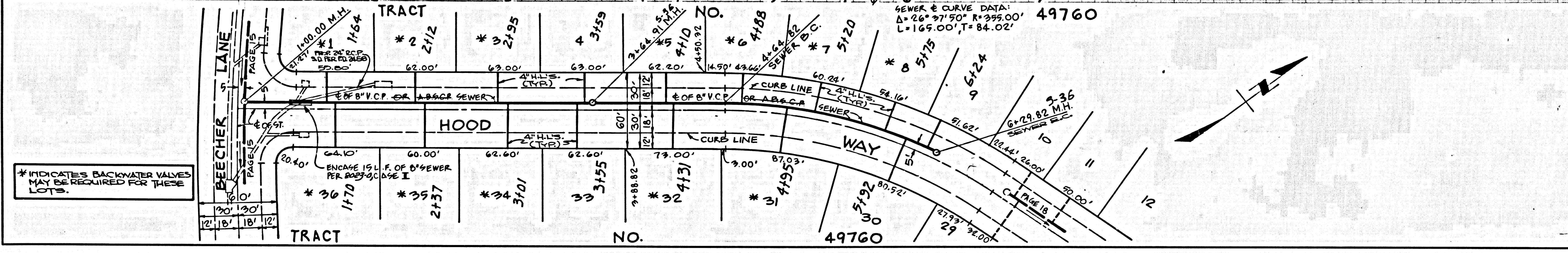
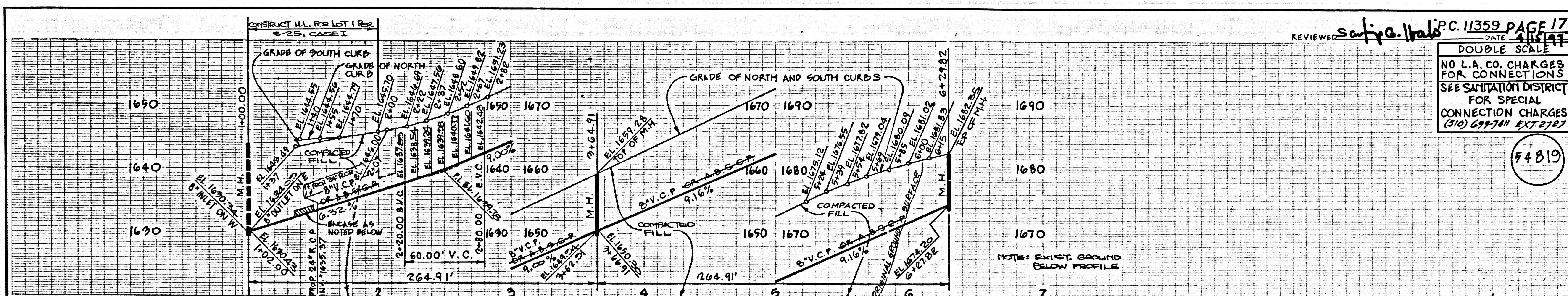
1
 0311 09
 11320

03764 ON TRACT



8
BC 11320

OSTEP ON TRACT



SEWER & CURVE DATA				
NO	Δ	R	L	T
1	10° 13' 14"	595.00'	189.22'	95.41'
2	11° 06' 46"	595.00'	115.40'	97.88'

PC 11359

OSTEP ON TRACT