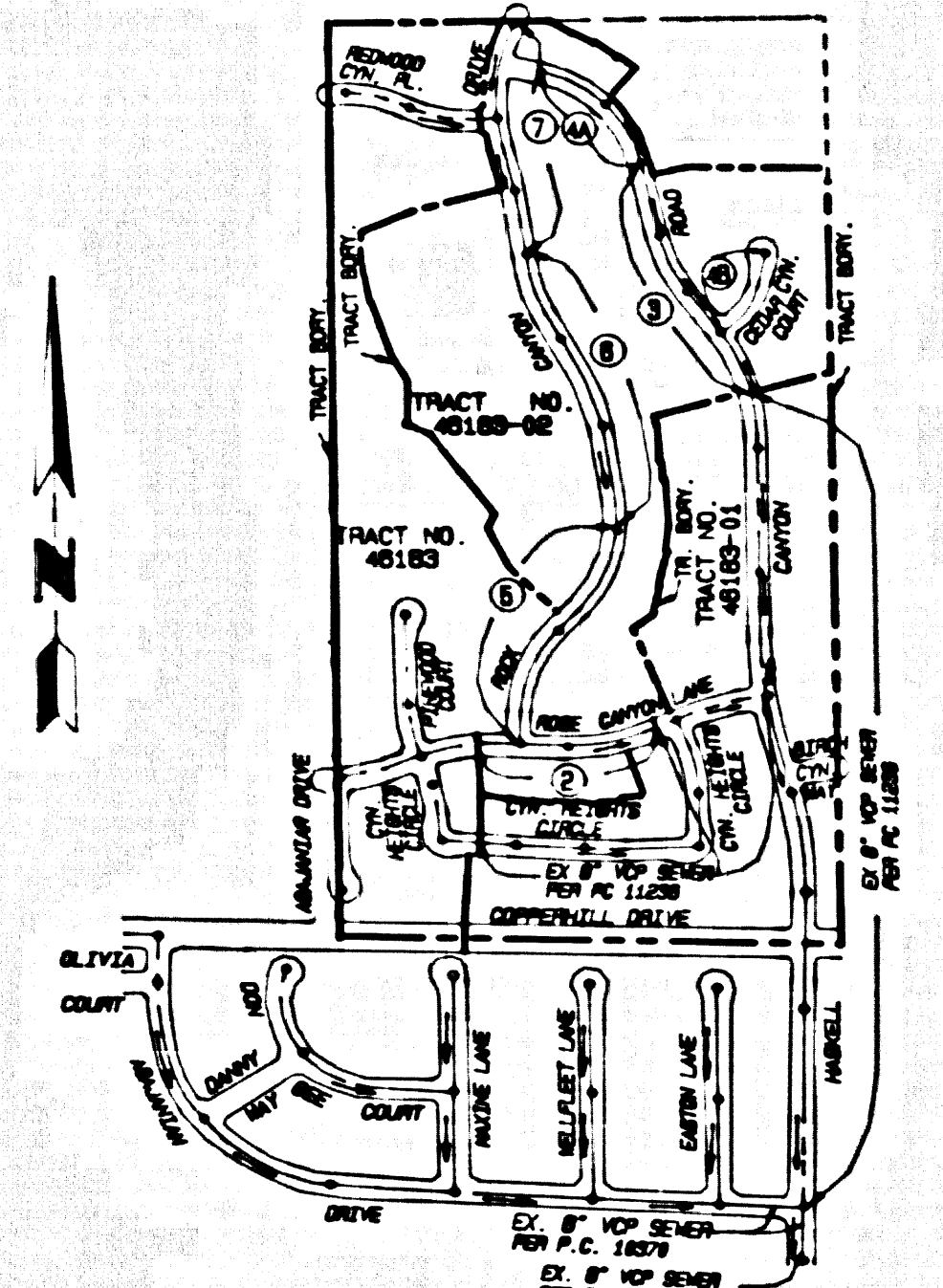


BENCH MARK: CL 4812 ELEV. 1267.653
 RBM TAG E CB 75' S/O C/L PROD
 CENTURION WAY & 45' E/O C/L BOUQUET CYN RD
 NEMHALL QUAD. 1983



INDEX MAP
 SCALE: 1" = 600'
 P.C. 11365 TRACT NO. 46183-02
 THOMAS GUIDE PG. NO. 4480-J4
 NOTE: NUMBERS IN CIRCLES INDICATE PAGE NUMBERS

PRIVATE ENGINEERS NOTICE TO CONTRACTORS:
 THE EXISTENCE AND LOCATION OF ANY UNDERGROUND UTILITY PIPES OR STRUCTURES SHOWN ON THESE PLANS IS OBTAINED BY A SEARCH OF AVAILABLE RECORDS TO THE BEST OF OUR KNOWLEDGE. THERE ARE NO EXISTING UTILITIES EXCEPT AS SHOWN ON THIS MAP. THE CONTRACTOR IS REQUIRED TO TAKE PRECAUTIONARY MEASURES TO PROTECT THE UTILITY LINES SHOWN AND ANY OTHER LINES NOT OF RECORD OR NOT SHOWN ON THIS DRAWING. PRIOR TO EXCAVATION THE CONTRACTOR SHALL CALL TOLL FREE 1-800-422-4133 TO VERIFY THE UNDERGROUND LOCATION OF GAS AND TELEPHONE LINES. THE CONTRACTOR SHALL ALSO CALL MR. RAY DUNNINGS OF GENERAL TELEPHONE COMPANY AT 1-805-948-4871 SO THAT THEY CAN MARK THE LOCATION OF UNDERGROUND TELEPHONE LINES.

NPDES NOTES
 BEST MANAGEMENT PRACTICES FOR CONSTRUCTION ACTIVITIES
 Erosion prevention and control practices must be received on site and may not be transported from the site via specification, vehicle, pipe, drain, natural drainage, or other means.
 Materials of earth and other construction related materials must be protected from being transported from the site by the force of wind or water.
 Fuel, oil, solvents and other toxic materials must be stored in accordance with their labeling and not be commingled with soil and surface water. All approved storage containers are to be protected from the weather. Spills must be cleaned up immediately and disposed of in a proper manner. Spills may not be washed into the drainage system.
 Storage of waste materials may not be carried into the public way or any other drainage system. Provisions shall be made to retain concrete washed on site until they can be disposed of on site.
 Trash and construction related solid wastes must be discarded into a covered receptacle to prevent contamination of rainwater and disposal by wind.
 Sediments and other materials may not be tracked from the site by vehicle traffic. The construction entrance roadway must be stabilized so as to inhibit sediments from being deposited into the public way. Assesment operations must be swept up immediately and may not be washed down by rain or other means.
 Any slope with disturbed soils or removal of vegetation must be stabilized so as to inhibit erosion by wind and water.

STORMWATER POLLUTION CONTROL REQUIREMENTS FOR SEWER CONSTRUCTION
 THE FOLLOWING BEST MANAGEMENT PRACTICE HANDBOOK, CALIFORNIA STORMWATER QUALITY TASK FORCE, SACRAMENTO, CALIFORNIA 1993, OR THE LATEST EDITION, MAY APPLY DURING CONSTRUCTION:
 CDD - DECONTAMINATION OPERATIONS
 CDDC - PAVING OPERATIONS
 CDDI - STRUCTURE CONSTRUCTION AND PAINTING
 CDDM - MATERIAL DELIVERY AND STORAGE
 CDDP - SOIL EROSION PREVENTION
 CDDR - SEEDING AND PLANTING
 CDDT - CONCRETE WASTE MANAGEMENT
 CDDU - CONCRETE WASTE MANAGEMENT
 CDDV - SANITARY/SEPTIC WASTE MANAGEMENT
 CDDW - VEHICLE AND EQUIPMENT MAINTENANCE
 CDDX - VEHICLE AND EQUIPMENT FUELING
 ESC1 - SCHEDULING
 ESC2 - PREVENTION OF EXISTING VEGETATION
 ESC3 - ALIQUOTING
 ESC4 - BEST PRACTICES FOR CONSTRUCTION
 ESC5 - BEST PRACTICES FOR CONSTRUCTION
 ESC6 - BEST PRACTICES FOR CONSTRUCTION
 ESC7 - BEST PRACTICES FOR CONSTRUCTION
 ESC8 - BEST PRACTICES FOR CONSTRUCTION
 ESC9 - BEST PRACTICES FOR CONSTRUCTION
 ESC10 - BEST PRACTICES FOR CONSTRUCTION
 ESC11 - BEST PRACTICES FOR CONSTRUCTION
 ESC12 - BEST PRACTICES FOR CONSTRUCTION
 ESC13 - BEST PRACTICES FOR CONSTRUCTION
 ESC14 - BEST PRACTICES FOR CONSTRUCTION
 ESC15 - BEST PRACTICES FOR CONSTRUCTION
 ESC16 - BEST PRACTICES FOR CONSTRUCTION
 ESC17 - BEST PRACTICES FOR CONSTRUCTION
 ESC18 - BEST PRACTICES FOR CONSTRUCTION
 ESC19 - BEST PRACTICES FOR CONSTRUCTION
 ESC20 - BEST PRACTICES FOR CONSTRUCTION
 ESC21 - BEST PRACTICES FOR CONSTRUCTION
 ESC22 - BEST PRACTICES FOR CONSTRUCTION
 ESC23 - BEST PRACTICES FOR CONSTRUCTION
 ESC24 - BEST PRACTICES FOR CONSTRUCTION
 ESC25 - BEST PRACTICES FOR CONSTRUCTION
 ESC26 - BEST PRACTICES FOR CONSTRUCTION
 ESC27 - BEST PRACTICES FOR CONSTRUCTION
 ESC28 - BEST PRACTICES FOR CONSTRUCTION
 ESC29 - BEST PRACTICES FOR CONSTRUCTION
 ESC30 - BEST PRACTICES FOR CONSTRUCTION
 ESC31 - BEST PRACTICES FOR CONSTRUCTION
 ESC32 - BEST PRACTICES FOR CONSTRUCTION
 ESC33 - BEST PRACTICES FOR CONSTRUCTION
 ESC34 - BEST PRACTICES FOR CONSTRUCTION
 ESC35 - BEST PRACTICES FOR CONSTRUCTION
 ESC36 - BEST PRACTICES FOR CONSTRUCTION
 ESC37 - BEST PRACTICES FOR CONSTRUCTION
 ESC38 - BEST PRACTICES FOR CONSTRUCTION
 ESC39 - BEST PRACTICES FOR CONSTRUCTION
 ESC40 - BEST PRACTICES FOR CONSTRUCTION
 ESC41 - BEST PRACTICES FOR CONSTRUCTION
 ESC42 - BEST PRACTICES FOR CONSTRUCTION
 ESC43 - BEST PRACTICES FOR CONSTRUCTION
 ESC44 - BEST PRACTICES FOR CONSTRUCTION
 ESC45 - BEST PRACTICES FOR CONSTRUCTION
 ESC46 - BEST PRACTICES FOR CONSTRUCTION
 ESC47 - BEST PRACTICES FOR CONSTRUCTION
 ESC48 - BEST PRACTICES FOR CONSTRUCTION
 ESC49 - BEST PRACTICES FOR CONSTRUCTION
 ESC50 - BEST PRACTICES FOR CONSTRUCTION
 ESC51 - BEST PRACTICES FOR CONSTRUCTION
 ESC52 - BEST PRACTICES FOR CONSTRUCTION
 ESC53 - BEST PRACTICES FOR CONSTRUCTION
 ESC54 - BEST PRACTICES FOR CONSTRUCTION
 ESC55 - BEST PRACTICES FOR CONSTRUCTION
 ESC56 - BEST PRACTICES FOR CONSTRUCTION
 ESC57 - BEST PRACTICES FOR CONSTRUCTION
 ESC58 - BEST PRACTICES FOR CONSTRUCTION
 ESC59 - BEST PRACTICES FOR CONSTRUCTION
 ESC60 - BEST PRACTICES FOR CONSTRUCTION
 ESC61 - BEST PRACTICES FOR CONSTRUCTION
 ESC62 - BEST PRACTICES FOR CONSTRUCTION
 ESC63 - BEST PRACTICES FOR CONSTRUCTION
 ESC64 - BEST PRACTICES FOR CONSTRUCTION
 ESC65 - BEST PRACTICES FOR CONSTRUCTION
 ESC66 - BEST PRACTICES FOR CONSTRUCTION
 ESC67 - BEST PRACTICES FOR CONSTRUCTION
 ESC68 - BEST PRACTICES FOR CONSTRUCTION
 ESC69 - BEST PRACTICES FOR CONSTRUCTION
 ESC70 - BEST PRACTICES FOR CONSTRUCTION
 ESC71 - BEST PRACTICES FOR CONSTRUCTION
 ESC72 - BEST PRACTICES FOR CONSTRUCTION
 ESC73 - BEST PRACTICES FOR CONSTRUCTION
 ESC74 - BEST PRACTICES FOR CONSTRUCTION
 ESC75 - BEST PRACTICES FOR CONSTRUCTION
 ESC76 - BEST PRACTICES FOR CONSTRUCTION
 ESC77 - BEST PRACTICES FOR CONSTRUCTION
 ESC78 - BEST PRACTICES FOR CONSTRUCTION
 ESC79 - BEST PRACTICES FOR CONSTRUCTION
 ESC80 - BEST PRACTICES FOR CONSTRUCTION
 ESC81 - BEST PRACTICES FOR CONSTRUCTION
 ESC82 - BEST PRACTICES FOR CONSTRUCTION
 ESC83 - BEST PRACTICES FOR CONSTRUCTION
 ESC84 - BEST PRACTICES FOR CONSTRUCTION
 ESC85 - BEST PRACTICES FOR CONSTRUCTION
 ESC86 - BEST PRACTICES FOR CONSTRUCTION
 ESC87 - BEST PRACTICES FOR CONSTRUCTION
 ESC88 - BEST PRACTICES FOR CONSTRUCTION
 ESC89 - BEST PRACTICES FOR CONSTRUCTION
 ESC90 - BEST PRACTICES FOR CONSTRUCTION
 ESC91 - BEST PRACTICES FOR CONSTRUCTION
 ESC92 - BEST PRACTICES FOR CONSTRUCTION
 ESC93 - BEST PRACTICES FOR CONSTRUCTION
 ESC94 - BEST PRACTICES FOR CONSTRUCTION
 ESC95 - BEST PRACTICES FOR CONSTRUCTION
 ESC96 - BEST PRACTICES FOR CONSTRUCTION
 ESC97 - BEST PRACTICES FOR CONSTRUCTION
 ESC98 - BEST PRACTICES FOR CONSTRUCTION
 ESC99 - BEST PRACTICES FOR CONSTRUCTION
 ESC100 - BEST PRACTICES FOR CONSTRUCTION

GENERAL NOTES:

1. BEFORE CONSTRUCTION SHALL BE OBTAINED AND A FEE PAID FOR CONSTRUCTION ERECTION AND RECORD PLANS TO THE DEPARTMENT OF PUBLIC WORKS AT THE COUNTY ENGINEERING OFFICE, 12200 BURBANK BLVD., SANTA CLARITA, CA 91365. A FEE OF \$100.00 PER SET OF PLANS SHALL BE PAID TO THE COUNTY ENGINEERING OFFICE. ALL OTHER REQUIRED PERMITS, SUCH AS ROAD EXCAVATION, CALTRANS ETC. MUST BE FILED WITH THE PERMIT APPLICATION.
2. BEFORE CONSTRUCTION SHALL BE OBTAINED AND A FEE PAID FOR EXCAVATION AND TRENCHES FROM THE STATE OF CALIFORNIA DIVISION OF INDUSTRIAL SAFETY AND A CERTIFICATE OF "WORKING" COOPERATION LICENSE FROM THE DEPARTMENT OF PUBLIC WORKS. THESE PERMITS MUST BE OBTAINED PRIOR TO COMMENCEMENT OF WORK.
3. IF WORK IS TO BE DONE ON A STATE HIGHWAY, A PERMIT MUST BE OBTAINED FROM THE STATE OF CALIFORNIA DIVISION OF HIGHWAYS, 800 SOUTH BRIDGE STREET, LOS ANGELES, CALIFORNIA.
4. THE CONTRACTOR MUST CONTACT THE DIRECTOR OF PUBLIC WORKS TO DETERMINE THE LOCATION TO "TAP" THE DRAINAGE PIPE.
5. THE CONTRACTOR SHALL CONTACT THE DISTRICT OFFICE LISTED ON THE "APPLICATION FOR CONSTRUCTION PERMIT" TO ARRANGE FOR AN ACCEPTABLE CONSTRUCTION START DATE AND SHALL NOTIFY THE CONSTRUCTION DIVISION BY TELEPHONE (800) 855-6848 AT LEAST FIFTEEN (15) DAYS PRIOR TO THE START DATE.
6. APPROVAL OF THIS PLAN BY THE CITY OF SANTA CLARITA DOES NOT CONSTITUTE A REPRESENTATION AS TO ACCURACY OF THE LOCATION OF ANY UNDERGROUND UTILITY PIPE OR STRUCTURE WITHIN THE LIMITS OF THIS PROJECT. THIS NOTE APPLIES TO ALL PAGES.
7. ALL WORK SHALL BE IN ACCORDANCE WITH THE "STANDARD SPECIFICATIONS FOR PUBLIC WORKS CONSTRUCTION (LATEST EDITION)" AND SHALL BE PROVIDED TO THE CONTRACTOR BY THE COUNTY ENGINEERING OFFICE. THE CONTRACTOR SHALL BE RESPONSIBLE FOR OBTAINING THE LATEST EDITION OF THE "STANDARD SPECIFICATIONS FOR PUBLIC WORKS CONSTRUCTION (LATEST EDITION)" AND SHALL BE RESPONSIBLE FOR OBTAINING THE LATEST EDITION OF THE "STANDARD SPECIFICATIONS FOR PUBLIC WORKS CONSTRUCTION (LATEST EDITION)".
8. ELEVATIONS ARE IN FEET ABOVE U.S.C. & G.S. SEA LEVEL DATUM OF 1988.
9. NO REVISIONS SHALL BE MADE ON THESE PLANS WITHOUT THE APPROVAL OF THE DIRECTOR OF PUBLIC WORKS.
10. NO REPRESENTATIVE OF THE DEPARTMENT OF PUBLIC WORKS WILL SURVEY OR LAY OUT ANY PORTION OF THE WORK.
11. BRIGES TO WHICH THIS SPECIFICATION IS TO BE CONSTRUCTED ARE SHOWN ON PLANS AND PROFILES. BRIDGE POINTS FOR TOP OF CURB, CENTERLINE OF BRIDGE, OR CENTERLINE OF ALLEYS ARE SHOWN BY CIRCLES AT ALL POINTS BETWEEN DESIGNATED POINTS. THE BRIDGE SHALL BE ESTABLISHED SO AS TO CONFORM TO A STRAIGHT LINE DRAWN BETWEEN SAID DESIGNATED POINTS.
12. THE PRIVATE ENGINEER SHALL FURNISH THE DEPARTMENT OF PUBLIC WORKS WITH BRIDGE SHEETS AND STATIONING FOR ALL HOUSE LATERALS AND VENTED PIPES AND SHALL PROVIDE BRIDGE SHEETS FOR THEIR THEIR PROPER LOCATION WITH STATIONING PLACED AT 10' INTERVALS. ALL HOUSE LATERALS SHALL BE CONSTRUCTED IN A STRAIGHT ALIGNMENT AT RIGHT ANGLES FROM THE MAIN LINE SEWER EXCEPT AS SHOWN ON THE PLANS. BRIDGE SHEETS SHALL BE PROVIDED IN WRITING BY THE CONTRACTOR TO THE DEPARTMENT OF PUBLIC WORKS PRIOR TO CONSTRUCTION OF THE HOUSE LATERAL. BRIDGE SHEETS SHALL BE PROVIDED IN WRITING BY THE CONTRACTOR TO THE DEPARTMENT OF PUBLIC WORKS PRIOR TO CONSTRUCTION OF THE HOUSE LATERAL.
13. THE PRIVATE ENGINEER SHALL FURNISH THE HOUSE LATERAL SHEET AT THE PROPERTY LINE BELOW THE TOP CURB ELEVATION FOR EACH HOUSE LATERAL ON THE BRIDGE SHEET.

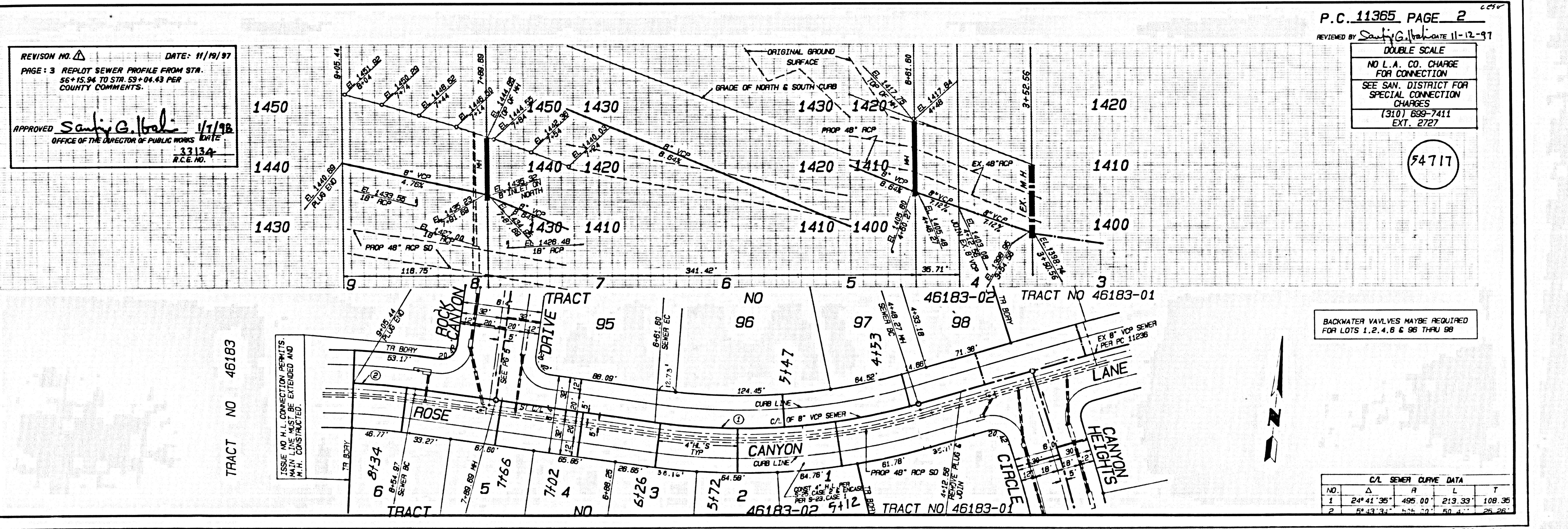
CONSTRUCTION NOTES:

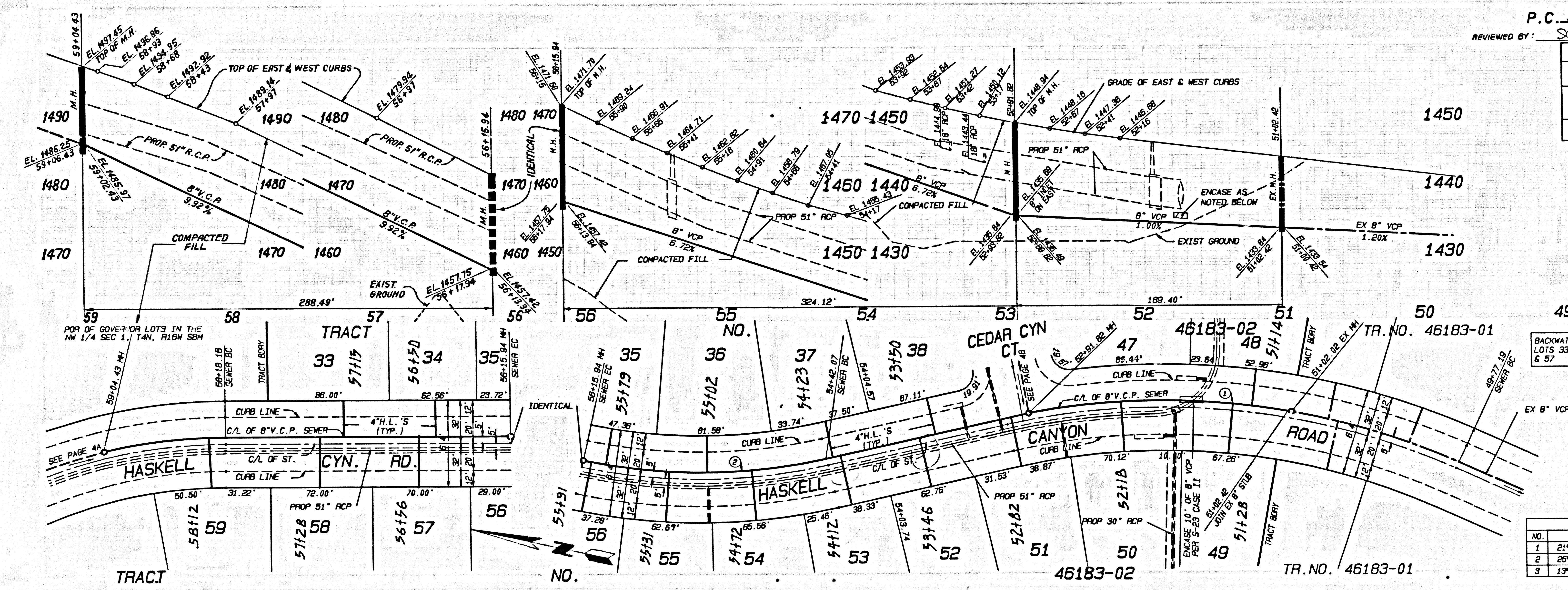
1. PROVIDE SURVEY STAKES ON THE PROPERTY LINE OR PROPERTY LINES PRODUCED AT RIGHT ANGLES TO THE SEWER LINE AT THE CENTERLINE OF EACH MANHOLE.
2. VENTED CLAY PIPE SHALL BE TYPE "12" OR "14" FOR STANDARD SPECIFICATIONS SECTION 200-8.
3. IF A POWER POLE IS WITHIN THREE FEET OF THE SEWER, THE SEWER SHALL BE ENCASED PER STANDARD PLAN 8-28. TWO FEET ON EACH SIDE FROM THE POINT OF INTERFERENCE.
4. ALL JOINTS BETWEEN VENTED CLAY PIPE SHALL BE MADE WITH A RUBBER SLEEVE JOINT. TYPE "12" WITH RUBBER JOINT IF NECESSARY PER STANDARD SPECIFICATIONS SECTION 200-8.
5. HOUSE LATERALS TO BE CONSTRUCTED WITH DWVETS AT PROPERTY LINE 8 FEET BELOW CURB GRADE EXCEPT AS NOTED.
6. USE OF THE BRIDGES MAY BE USED FOR EXCAVATIONS TO HOLDING BARRIERS EXCEPT AS NOTED.
7. BY OBTAINING THE PERMIT OF CONSTRUCTION, IT IS UNDERSTOOD THAT THERE IS LESS THAN FOUR FEET OF COVER OVER THE TOP OF MAINLINE OR HOUSE LATERAL V.C.P. SEWER WHICH IS NOT INDICATED ON THE PLANS. THE PIPE SHALL BE ENCASED PER STANDARD PLAN 8-28. OR PRECAST CONCRETE BRIDGE MANHOLES PER STANDARD PLAN 8-28. EXCEPT AS NOTED.
8. ALL STRUCTURES SHALL BE EITHER BRIDGE MANHOLES PER STANDARD PLAN 8-28 OR PRECAST CONCRETE BRIDGE MANHOLES PER STANDARD PLAN 8-28. OR PRECAST CONCRETE BRIDGE MANHOLES PER STANDARD PLAN 8-28. EXCEPT AS NOTED.
9. REPAIRS TO ALL STRUCTURES WITHIN PAVED AREAS TO MEET CITY OF SANTA CLARITA PUBLIC WORKS OR CALIFORNIA STATE HIGHWAY DEPARTMENT REQUIREMENTS SHALL BE THE RESPONSIBILITY OF THE CONTRACTOR.
10. FULL COMPLIANCE WITH SECTION 200-8.1 OF THE STANDARD SPECIFICATIONS WILL BE REQUIRED FOR BACKFILL IN STREETS. CERTIFICATION OF BACKFILL COMPLETION AND SAND EQUIVALENCY BY A QUALIFIED CIVIL ENGINEER SHALL BE PROVIDED BY THE CONTRACTOR PRIOR TO THE REMOVAL OF A CERTIFICATE OF FINISH.
11. ALL BACKFILL AND FILLS OUTSIDE OF STREET RIGHT OF WAY SHALL BE COMPACTED TO 95% OF MAXIMUM DENSITY AS DETERMINED BY 45TH SOIL COMPACTION METHOD. THE CONTRACTOR SHALL BE RESPONSIBLE FOR OBTAINING THE STANDARD SPECIFICATIONS FOR PUBLIC WORKS CONSTRUCTION. THIS CERTIFICATION SHALL BE SUBMITTED TO THE CONSTRUCTION DIVISION OF THE DEPARTMENT OF PUBLIC WORKS PRIOR TO ACCEPTANCE OF THE WORK BY THE CITY.
12. MANHOLE TOPS IN IMPROVED AREAS OF MAY TO BE LEVEL WITH FINISHED GRADE.
13. MANHOLES TO BE TESTED FOR LEAKAGE PER SECTION 200-1.4 OF THE STANDARD SPECIFICATION AND SPECIAL PROVISIONS.
14. ALL VENTED HOUSE LATERALS ARE TO BE LOCATED AT LEAST FIVE FEET AWAY AND WHEN POSSIBLE NOT CLOSER THAN FIVE FEET TO ANY MANHOLE.

PROFILE, ALIGNMENT AND GRADE OF **PAGE 1**
SANITARY SEWERS (54716)
 TO BE CONSTRUCTED IN
 TRACT No. 46183-02
 PRIVATE CONTRACT NO. 11365
 INDEX 1332
 4 SHEETS; 7 PAGES
 VERT. 1" = 8'
 HORIZ. 1" = 40'
 JAN. 1997
 PREPARED IN THE OFFICES OF
 SIKAND ENGINEERING
 15230 BURBANK BLVD., VAN NUYS, CA 91411-3688
 TEL: (818) 787-8650
 BY: *[Signature]*
 REG. C.E. No. 19,524

THE FOLLOWING LATEST REVISED STANDARD PLANS ON FILE IN THE OFFICE OF THE DEPARTMENT OF PUBLIC WORKS SHALL APPLY IN THE CONSTRUCTION OF THIS PROJECT:
 LEAKING 8-1
 HIGHWAY PUBLIC SAFETY REQUIREMENTS 8-2
 BRIDGE MANHOLE 8-3
 STANDARD MANHOLE STEP 8-17
 SECTIONS FOR SEWER PIPE 8-21
 CHAINING AND ENCASUREMENT 8-23
 V.C.P. OR SUPPORT 8-25
 ALLOWABLE TRENCH WIDTHS 8-28
 LOCKING MANHOLE FRAME AND COVER 8-30
 NON-REINFORCED PRECAST CONCRETE MANHOLE 8-38

COUNTY OF LOS ANGELES, CALIFORNIA
 HARRY M. STONE
 DIRECTOR OF PUBLIC WORKS
 CHARLES W. CARRY
 CHIEF ENGINEER
 CO. SAN. DIST. NO. 28
 APPROVED *[Signature]* 11/19/97 (DATE)
 APPROVED *[Signature]* 11/18/97 (DATE)
 CHECKED *[Signature]* 11/19/97 (DATE)
 BUILDING DIST. SANTA CLARITA VALLEY B.2.





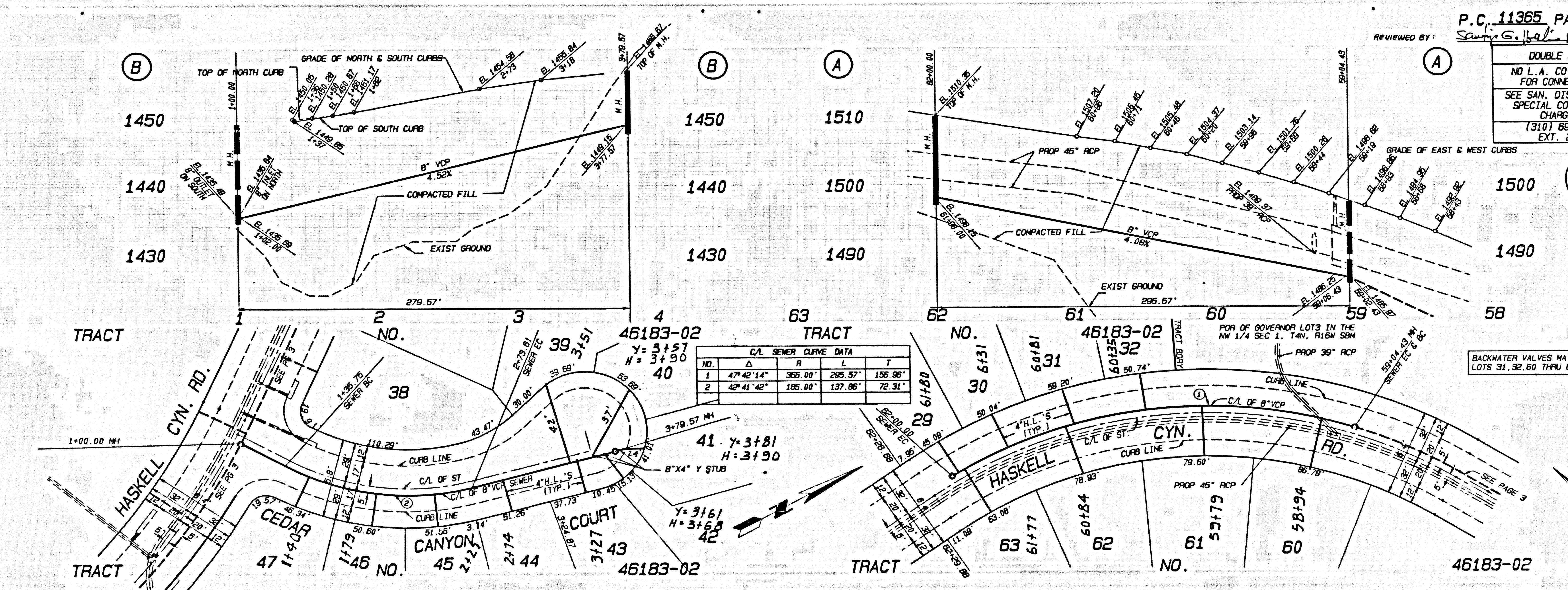
P.C. 11365 PAGE 3
 REVIEWED BY: *Sam G. Bell* 11-10-97
 DOUBLE SCALE
 NO L.A. CO. CHARGE FOR CONNECTION
 SEE SAN. DISTRICT FOR SPECIAL CONNECTION CHARGES
 (310) 699-7411 EXT. 2727

BACKWATER VALVES MAYBE REQUIRED FOR LOTS 33, 34, 36, 37, 48, 49, 51 THRU 55 & 57

C.V. SEWER CURVE DATA

NO.	Δ	R	L	T
1	21°32'03"	505.00'	189.80'	96.03'
2	25°13'13"	365.00'	173.87'	88.37'
3	13°55'25"	365.00'	86.27'	43.35'

5
 TR. NO. 46183-05 BC 11362
 50-6919A ON PT



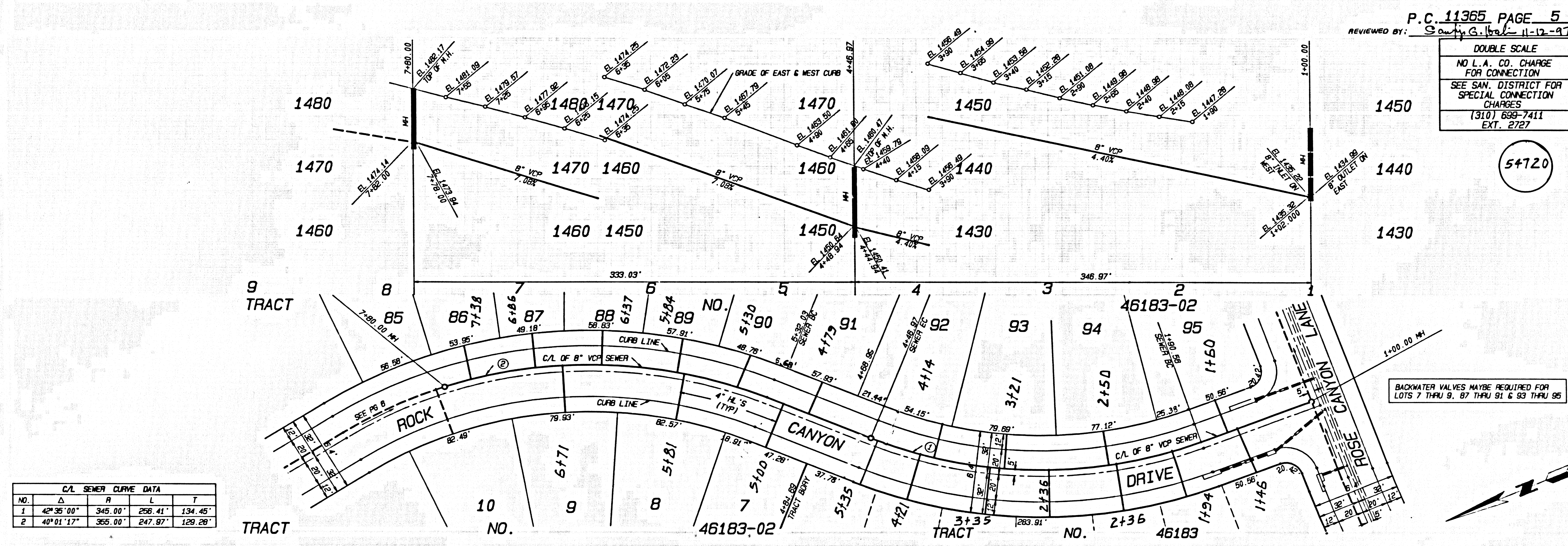
P.C. 11365 PAGE 4
 REVIEWED BY: *Sam G. Bell* 11-10-97
 DOUBLE SCALE
 NO L.A. CO. CHARGE FOR CONNECTION
 SEE SAN. DISTRICT FOR SPECIAL CONNECTION CHARGES
 (310) 699-7411 EXT. 2727

BACKWATER VALVES MAYBE REQUIRED FOR LOTS 31, 32, 60 THRU 62 & 45 THRU 47

C.V. SEWER CURVE DATA

NO.	Δ	R	L	T
1	47°42'14"	365.00'	296.57'	196.98'
2	42°41'42"	185.00'	137.86'	72.31'

5
 TR. NO. 46183-05 BC 11362
 50-6919A ON PT



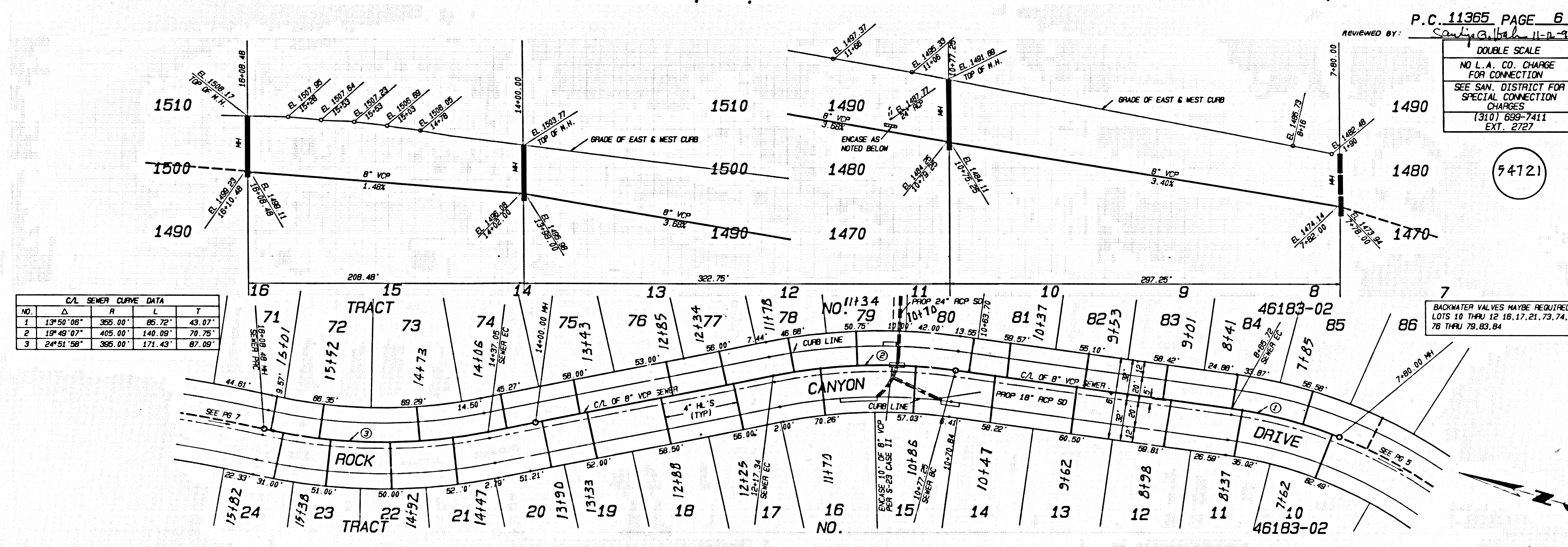
C/L SEWER CURVE DATA				
NO.	Δ	R	L	T
1	42°35'00"	345.00'	258.41'	134.45'
2	40°01'17"	355.00'	247.97'	129.28'

P.C. 11365 PAGE 5
 REVIEWED BY: *Sanjay G. Patel* 11-12-97
 DOUBLE SCALE
 NO L.A. CO. CHARGE FOR CONNECTION
 SEE SAN. DISTRICT FOR SPECIAL CONNECTION CHARGES
 (310) 699-7411 EXT. 2727

54720

BACKWATER VALVES MAYBE REQUIRED FOR LOTS 7 THRU 9, 87 THRU 91 & 93 THRU 95

TR. NO. 46183-05 BC 17392 (3)



C/L SEWER CURVE DATA				
NO.	Δ	R	L	T
1	13°50'06"	355.00'	85.72'	43.07'
2	19°49'07"	405.00'	140.09'	70.75'
3	24°51'58"	355.00'	171.43'	87.09'

P.C. 11365 PAGE 6
 REVIEWED BY: *Sanjay G. Patel* 11-12-97
 DOUBLE SCALE
 NO L.A. CO. CHARGE FOR CONNECTION
 SEE SAN. DISTRICT FOR SPECIAL CONNECTION CHARGES
 (310) 699-7411 EXT. 2727

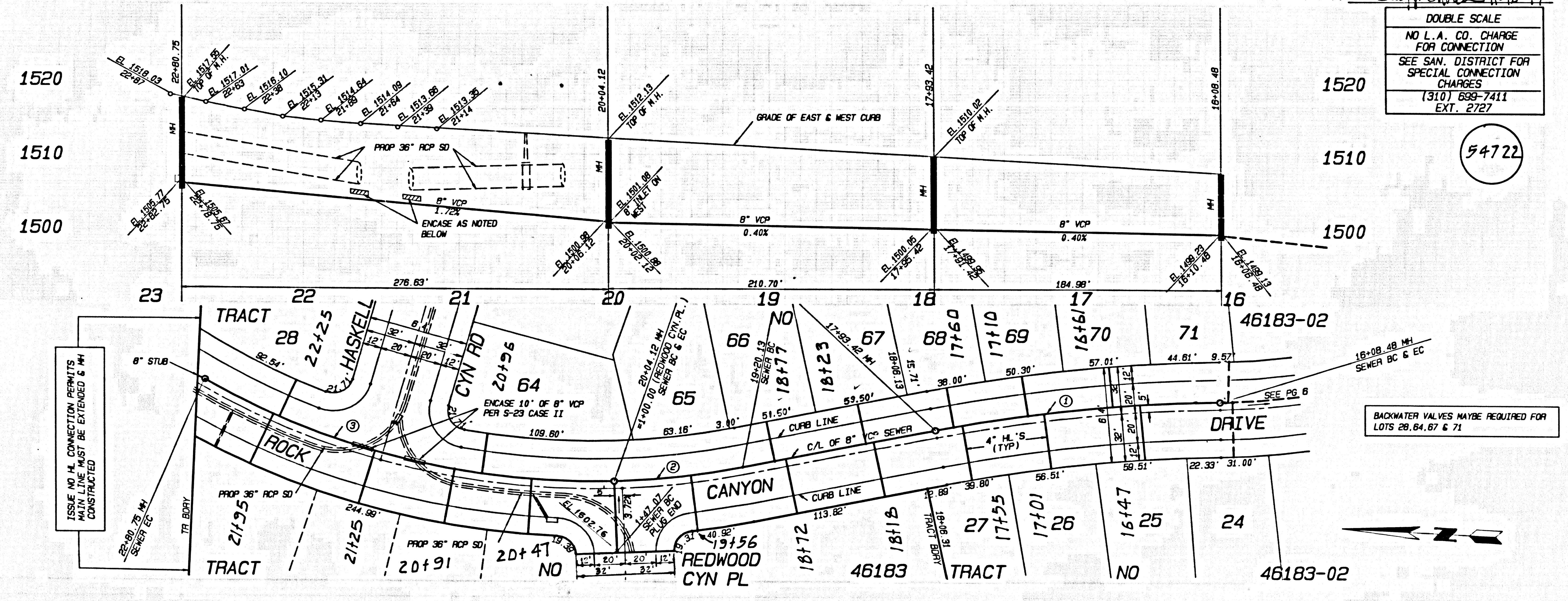
54721

BACKWATER VALVES MAYBE REQUIRED FOR LOTS 10 THRU 12, 16, 17, 21, 73, 74, 78 THRU 79, 83, 84

DOUBLE SCALE
 NO L.A. CO. CHARGE
 FOR CONNECTION
 SEE SAN. DISTRICT FOR
 SPECIAL CONNECTION
 CHARGES
 (310) 695-7411
 EXT. 2727

54722

NO.	Δ	S	T
1	10°32'37"	1005.00'	184.94'
2	9°43'18"	456.00'	83.99'
3	32°01'11"	456.00'	276.63'



46183-05 BC 11365 7
 46183-05 BC 11365 7