

REVIEWED BY *Safiq G. Iqbal* DATE 9-15-97 P.C. 11370 PAGE 3

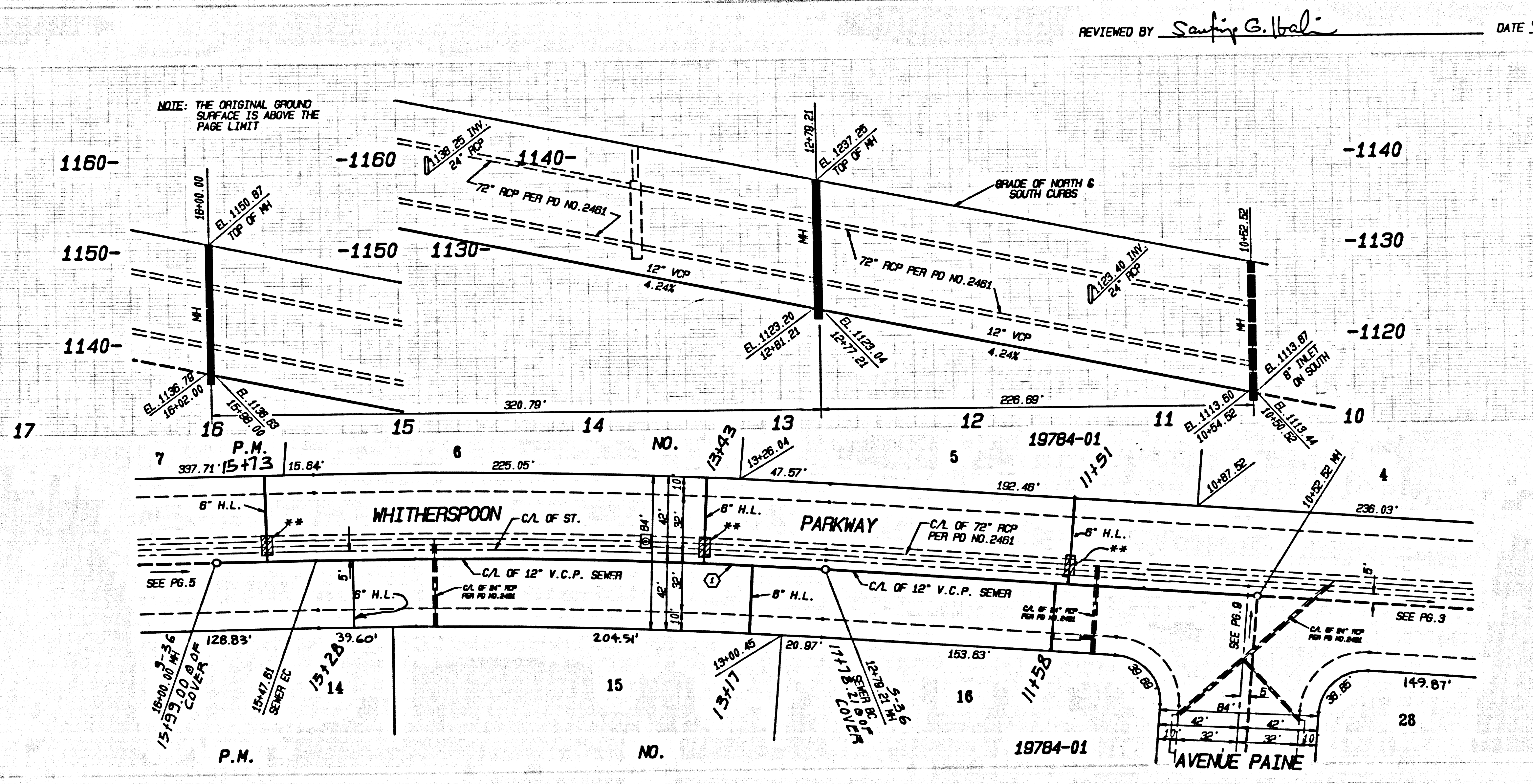
DOUBLE SCALE  
 NO L.A. CO. CHARGE FOR CONNECTION  
 SEE SAN. DISTRICT FOR SPECIAL CONNECTION CHARGES  
 TEL. (562) 699-7411 EXT. 2727

55321

| C/L SEWER CURVE DATA |           |         |        |        |
|----------------------|-----------|---------|--------|--------|
|                      | A         | R       | L      | T      |
| 1                    | 06°42'04" | 1505.00 | 178.02 | 88.11  |
| 2                    | 06°55'02" | 1505.00 | 234.24 | 117.35 |
| 3                    | 07°15'57" | 1506.00 | 190.85 | 95.25  |

\*\* CONST. SPECIAL H.L. CONNECTION PER S-25, CASE II AND CONCRETE CRADLE PER S-23, CASE I  
 \*\* CONST. SPECIAL H.L. CONNECTION PER S-25, CASE I AND ENCASE 10' OF THE 6" H.L. PER S-23, CASE II

5  
 BC 11370  
 10-18701 M.P.



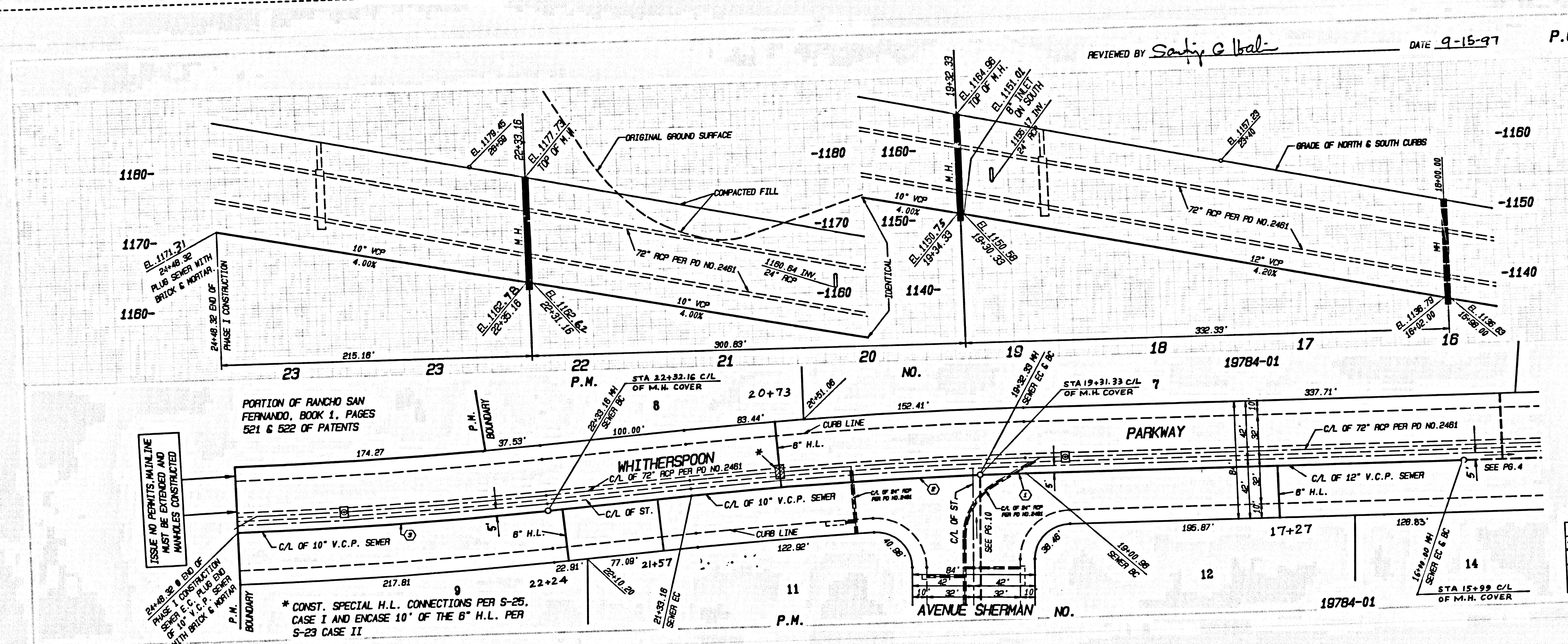
REVIEWED BY *Safiq G. Iqbal* DATE 9-15-97 P.C. 11370 PAGE 4

DOUBLE SCALE  
 NO L.A. CO. CHARGE FOR CONNECTION  
 SEE SAN. DISTRICT FOR SPECIAL CONNECTION CHARGES  
 TEL. (562) 699-7411 EXT. 2727

55322

| C/L SEWER CURVE DATA |           |         |        |        |
|----------------------|-----------|---------|--------|--------|
|                      | A         | R       | L      | T      |
| 1                    | 06°08'05" | 2985.00 | 268.40 | 134.29 |

\*\* CONST. SPECIAL H.L. CONNECTION PER S-25, CASE I AND ENCASE 10' OF THE 6" H.L. PER S-23, CASE II



REVIEWED BY *Sahy G. Bali* DATE 9-15-97

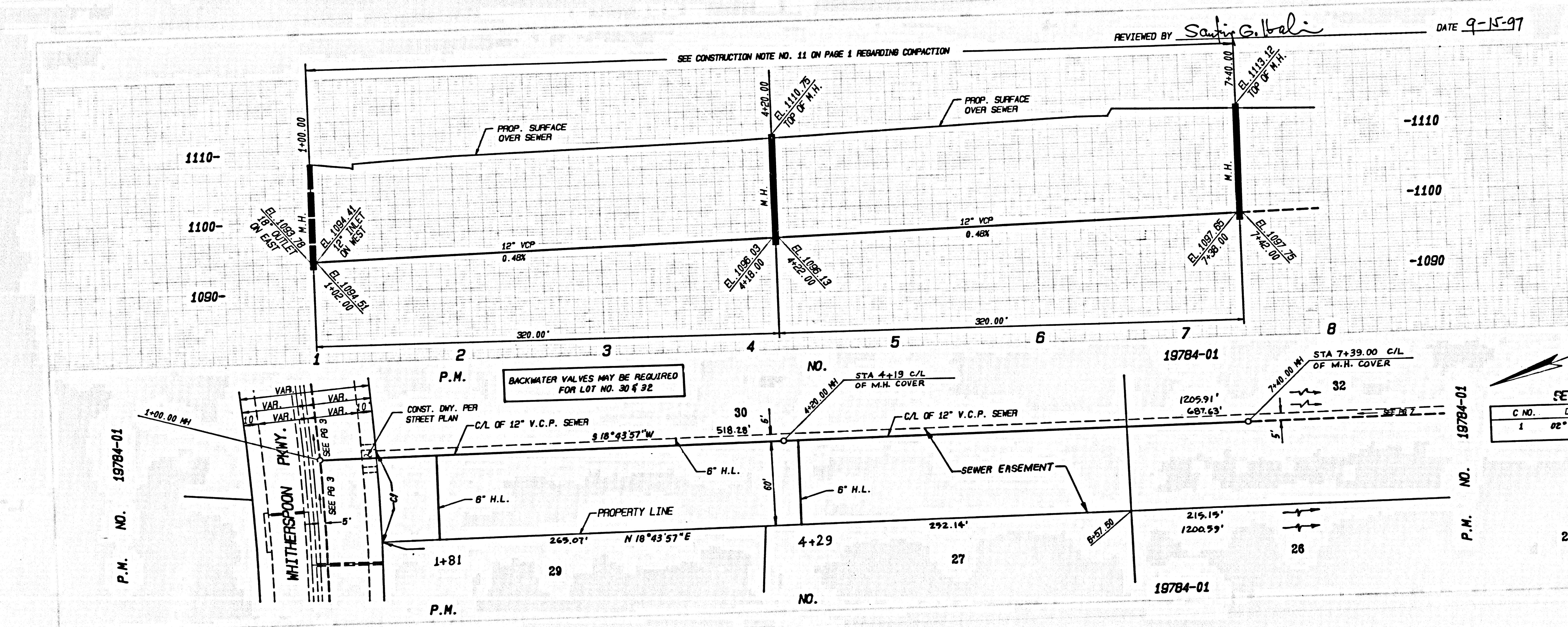
P.C. 11370 PAGE 5 ME

DOUBLE SCALE  
 NO L.A. CO. CHARGE FOR CONNECTION  
 SEE SAN. DISTRICT FOR SPECIAL CONNECTION CHARGES  
 TEL. (562) 699-7411 EXT. 2727

55323

3  
 0511 39  
 10-48791 M.P.  
 BC 11330

| C | A         | R        | L       | T       |
|---|-----------|----------|---------|---------|
| 1 | 00°36'57" | 2665.00' | 31.32'  | 15.66'  |
| 2 | 03°50'35" | 2565.00' | 200.66' | 100.48' |
| 3 | 04°06'08" | 3005.00' | 215.18' | 107.53' |



REVIEWED BY *Sahy G. Bali* DATE 9-15-97

P.C. 11370 PAGE 6 ME

DOUBLE SCALE  
 NO L.A. CO. CHARGE FOR CONNECTION  
 SEE SAN. DISTRICT FOR SPECIAL CONNECTION CHARGES  
 TEL. (562) 699-7411 EXT. 2727

55324

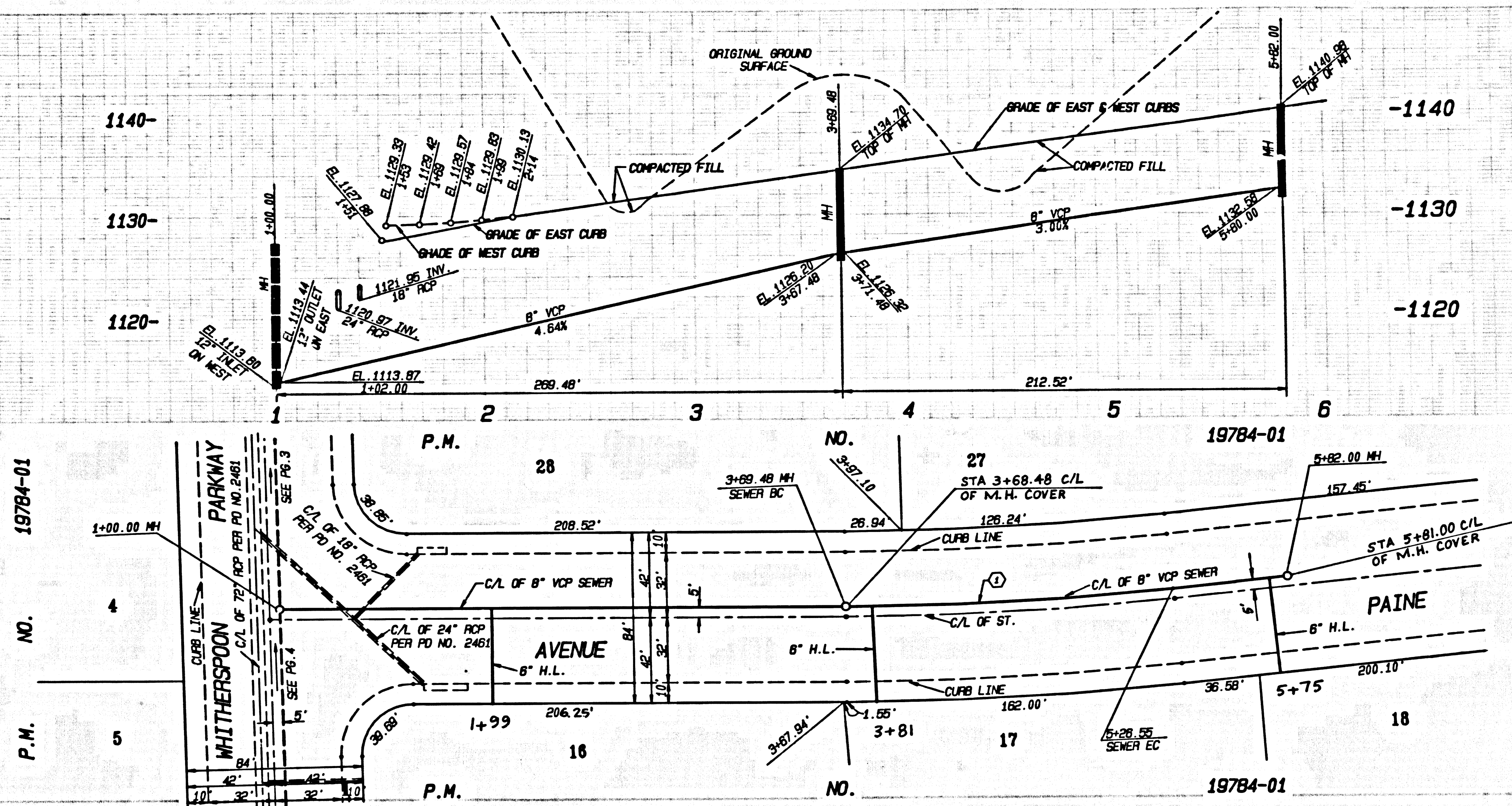
| C NO. | DELTA     | RADIUS   | APC    | TAN    |
|-------|-----------|----------|--------|--------|
| 1     | 02°24'12" | 1550.00' | 65.01' | 32.51' |

M.O.P. 100-187-048



DOUBLE SCALE  
 NO L.A. CO. CHARGE  
 FOR CONNECTION  
 SEE SAN. DISTRICT FOR  
 SPECIAL CONNECTION  
 CHARGES  
 TEL. (562) 699-7411  
 EXT. 2727

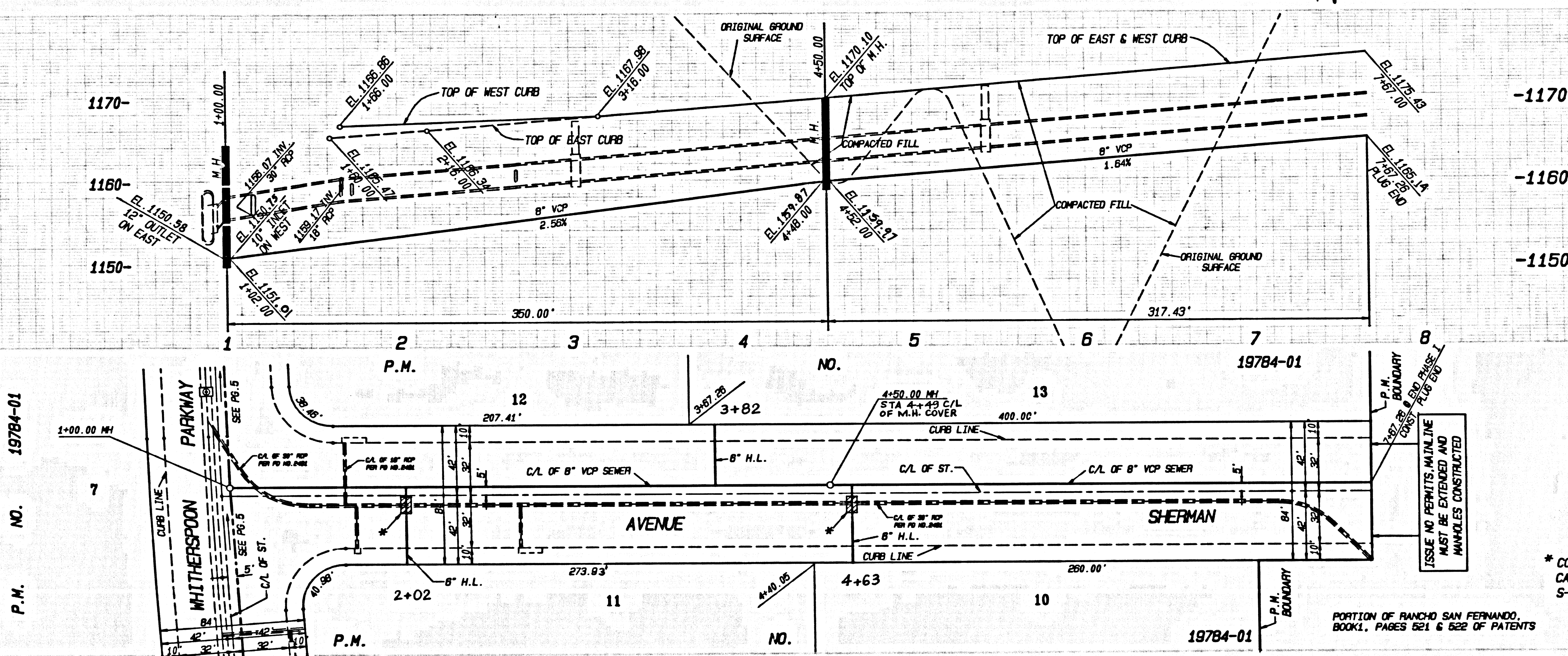
95327



| C/L SEWER CURVE DATA |           |          |         |        |
|----------------------|-----------|----------|---------|--------|
|                      | A         | R        | L       | T      |
| 1                    | 00°01'10" | 1485.00' | 157.07' | 78.81' |

DOUBLE SCALE  
 NO L.A. CO. CHARGE  
 FOR CONNECTION  
 SEE SAN. DISTRICT FOR  
 SPECIAL CONNECTION  
 CHARGES  
 TEL. (562) 699-7411  
 EXT. 2727

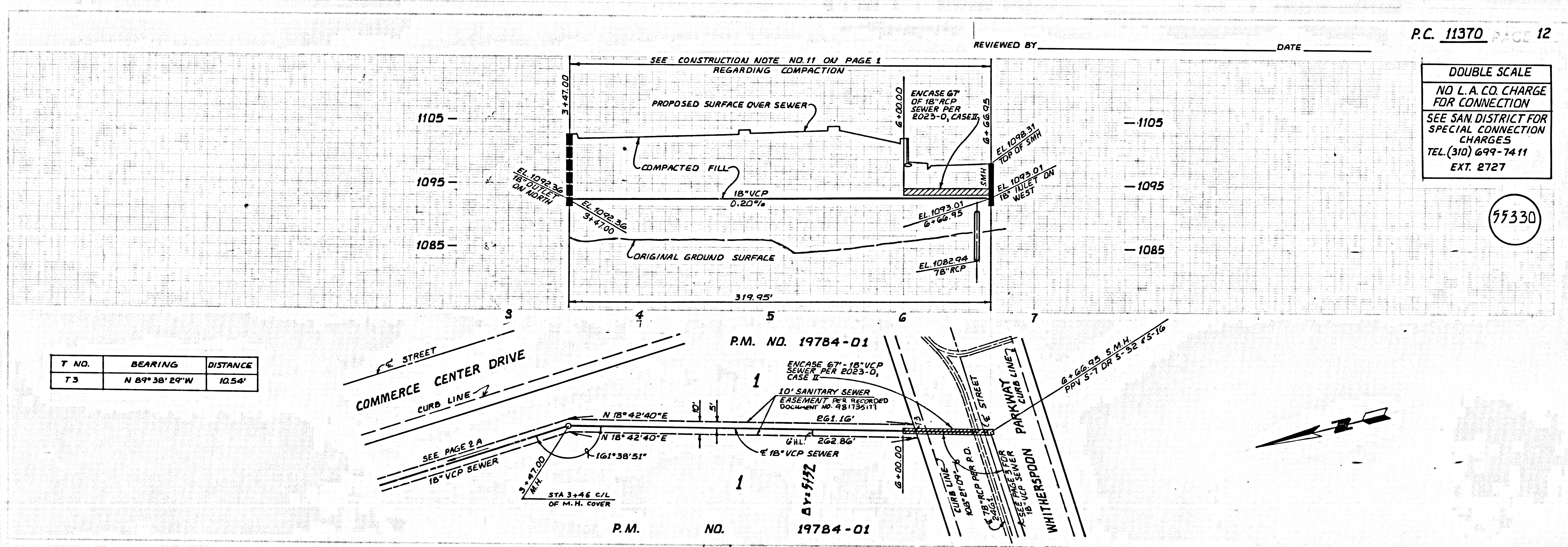
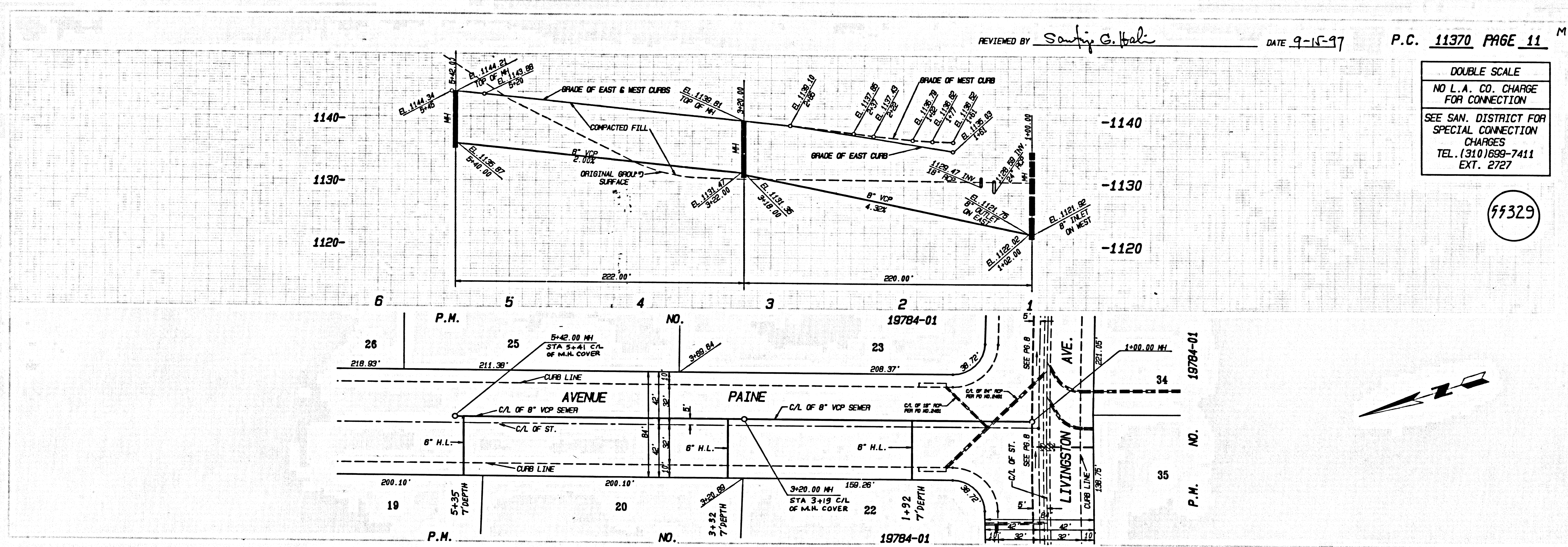
95328



BACKWATER VALVES MAY BE REQUIRED  
 FOR LOT NOS. 11, 12 & 13

\* CONST. SPECIAL H.L. CONNECTIONS PER S-25,  
 CASE I AND ENCASE 10' OF THE 8" H.L. PER  
 S-23 CASE II

051139 BC 11310  
 B.W.M.P. 10-18701



10-48701 M.P. 071139