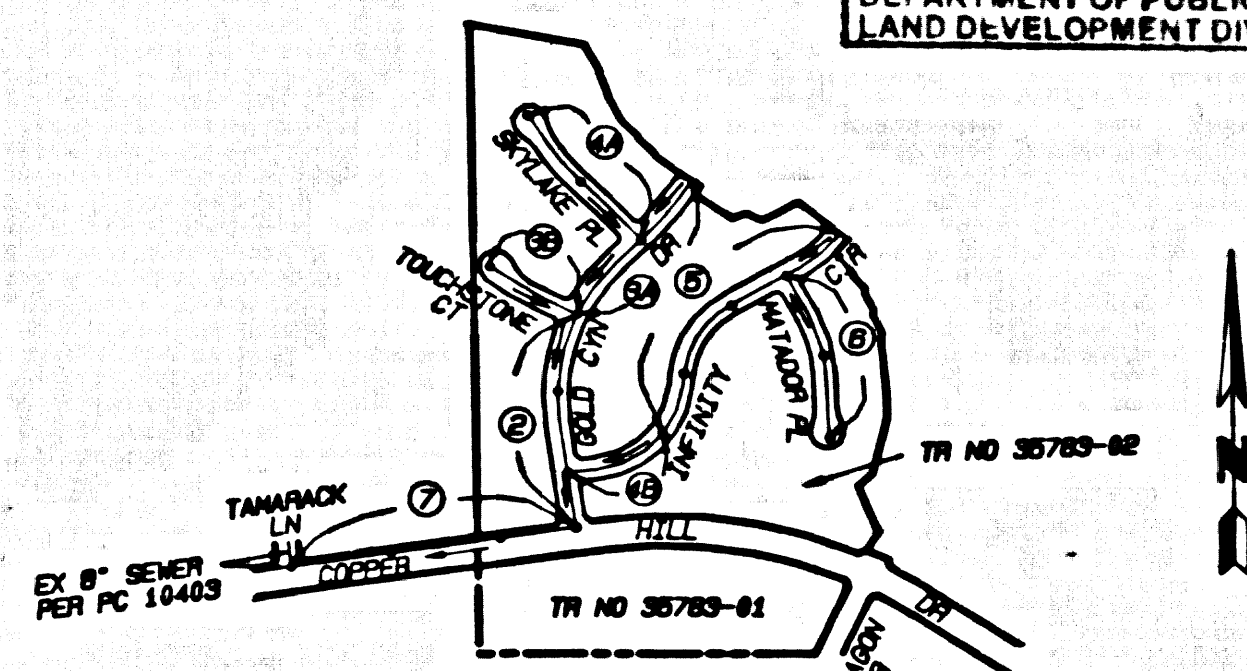


BENCH MARK: L 5281
 DPM BH TAG IN S CB 0FT E/O BOR 0 SE
 COR SECD CYN RD 6 COPPER HILL DR 64FT
 E 6 30FT S/O C/L INT (W END C B)
 NEWMALL QUAD. (1983) ELEV. 1342.771

THIS SEWER PRIVATE CONTRACT
 ACCEPTED FOR PUBLIC USE
 05/28/2000
 COUNTY OF LOS ANGELES
 DEPARTMENT OF PUBLIC WORKS
 LAND DEVELOPMENT DIVISION



BUILDING AND SAFETY
 SANTA CLARITA OFFICE

NO CONNECTION FOR THE DISPOSAL OF INDUSTRIAL WASTE SHALL BE MADE TO SEWERS SHOWN ON THESE DRAWINGS UNLESS A PERMIT FOR INDUSTRIAL WASTEWATER DISCHARGE HAS BEEN ISSUED BY THE SANITATION DISTRICTS FOR SAID CONNECTIONS.

BEFORE BREAKING INTO OR CONSTRUCTION ON A COUNTY SANITATION DISTRICT SEWER AND PRIOR TO FINAL ACCEPTANCE OF THE COUNTY, A SANITATION DISTRICT INSPECTOR SHALL BE NOTIFIED BY PHONE AT (800) 266-4483 SO THAT REQUIRED INSPECTIONS CAN BE MADE.

INDEX MAP
 SCALE: 1" = 300'
 P.C. 11376 TRACT NO. 35783-02
 THOMAS GUIDE PG. NO. 4480-J

NOTE: NUMBERS IN CIRCLES INDICATE PAGE NUMBERS

DOUBLE SCALE

PRIVATE ENGINEERS NOTICE TO CONTRACTORS:
 THE EXISTENCE AND LOCATION OF ANY UNDERGROUND UTILITY PIPES OR STRUCTURES SHOWN ON THESE PLANS IS OBTAINED BY A SEARCH OF AVAILABLE RECORDS TO THE BEST OF OUR KNOWLEDGE. THERE ARE NO EXISTING UTILITIES EXCEPT AS SHOWN ON THIS MAP. THE CONTRACTOR IS REQUIRED TO TAKE PRECAUTIONARY MEASURES TO PROTECT THE UTILITY LINES SHOWN AND ANY OTHER LINES NOT OF RECORD OR NOT SHOWN ON THIS DRAWING. PRIOR TO EXCAVATION THE CONTRACTOR SHALL CALL TOLL FREE 1-800-422-4133 TO VERIFY THE UNDERGROUND LOCATION OF GAS AND TELEPHONE LINES. THE CONTRACTOR SHALL ALSO CALL MR. RAY CUMMINGS OF GENERAL TELEPHONE COMPANY AT 1-800-845-9471 SO THAT THEY CAN MARK THE LOCATION OF UNDERGROUND TELEPHONE LINES.

Bullitt
 REGISTERED CIVIL ENGINEER NO. 12,122 EXP. 9-30-2001 DATE 11-4-97
 NPDES NOTES

- BEST MANAGEMENT PRACTICES FOR CONSTRUCTION ACTIVITIES
- Erosion sediments and other pollutants shall be retained on site and may not be transported from the site via overflows, erosion, storm drains, surface drainage courses or wind.
 - Runoff of earth and other construction related materials shall be protected from being transported from the site by the force of wind or water.
 - Fuels, oils, solvents and other toxic materials shall be stored in approved containers and shall be protected from the weather. All approved storage containers are to be protected from the weather. Spills shall be cleaned up immediately and disposed of in a proper manner. Spills may not be washed into the drainage system.
 - Excess or waste materials may not be washed into the public way or any other drainage system. Provisions shall be made to retain materials washed on site until they can be disposed of as solid waste.
 - Trash and construction related solid wastes must be deposited into a covered receptacle to be promptly removed from the site and disposed of by a licensed hauler. The construction entrance procedure must be established so as to prevent materials from being deposited into the public way. Additional provisions must be made to prevent materials from being deposited into the public way.
 - Any slopes with disturbed soils or denuded of vegetation must be stabilized so as to inhibit erosion by wind and water.

STORMWATER POLLUTION CONTROL REQUIREMENTS FOR SEWER CONSTRUCTION

- THE FOLLOWING BMP'S PER THE "BEST MANAGEMENT PRACTICE HANDBOOK", CALIFORNIA STORMWATER QUALITY TASK FORCE, SACRAMENTO, CALIFORNIA 1993, OR THE LATEST EDITION, MAY APPLY DURING CONSTRUCTION:
- CA001 - DEMATERING OPERATIONS
 - CA002 - PAVING OPERATIONS
 - CA003 - STRUCTURE CONSTRUCTION AND PAINTING
 - CA004 - MATERIAL DELIVERY AND STORAGE
 - CA021 - SOLID WASTE MANAGEMENT
 - CA022 - HAZARDOUS WASTE MANAGEMENT
 - CA023 - CONCRETE WASTE MANAGEMENT
 - CA024 - SANITARY/SPECIAL WASTE MANAGEMENT
 - CA025 - VEHICLE AND EQUIPMENT CLEANING
 - CA026 - VEHICLE AND EQUIPMENT FUELING
 - CA028 - VEHICLE AND EQUIPMENT MAINTENANCE
 - ES001 - SCHEDULING
 - ES002 - PRESERVATION OF EXISTING VEGETATION
 - ES003 - RESTRICTIONS AND PLANTING
 - ES011 - MULCHING
 - ES012 - RESTRICTIONS AND PLANTING
 - ES021 - DUST CONTROL
 - ES022 - TEMPORARY STREAM CROSSING
 - ES023 - CONSTRUCTION ROAD STABILIZATION
 - ES024 - STABILIZED CONSTRUCTION ENTRANCE
 - ES025 - STORM DRAIN INLET PROTECTION

RECORD PLANS

GENERAL NOTES:

1. A SEWER CONSTRUCTION PERMIT SHALL BE OBTAINED AND A FEE PAID FOR CONSTRUCTION INSPECTION AND RECORD PLANS TO THE CALIFORNIA DIVISION OF INDUSTRIAL SAFETY AND A CERTIFICATE OF MONITORING COOPERATION INSURANCE WITH THE DEPARTMENT OF PUBLIC WORKS SHALL BE OBTAINED PRIOR TO STARTING WORK UNDER THIS CONTRACT. ALL OTHER REQUIRED PERMITS, SUCH AS ROAD EXCAVATION, HIGHWAY OR SOUTH SPRING STREET, LOS ANGELES, CALIFORNIA, SHALL BE FILED WITH THE PERMIT APPLICATION.
2. PRIOR TO ISSUANCE OF ANY PERMIT, THE CONTRACTOR SHALL FILE A PERMIT FOR EXCAVATIONS AND TRENCHES FROM THE STATE OF CALIFORNIA DIVISION OF INDUSTRIAL SAFETY AND A CERTIFICATE OF MONITORING COOPERATION INSURANCE WITH THE DEPARTMENT OF PUBLIC WORKS NAMED AS THE CERTIFICATE HOLDER TO BE NOTIFIED 30 DAYS PRIOR TO CANCELLATION OF POLICY.
3. IF WORK IS TO BE DONE IN A STATE HIGHWAY, A PERMIT MUST BE OBTAINED FROM THE STATE OF CALIFORNIA DIVISION OF HIGHWAYS, LOS ANGELES DISTRICT OFFICE, PRIOR TO EXCAVATION AND TRENCHING.
4. WORK SHALL BE WITHIN A CONTRACT CITY. THE CONTRACTOR MUST CONTACT THE DIRECTOR OF PUBLIC WORKS OF THAT CITY, TO DETERMINE THE LOCATION TO PAY THE SUBSCRIPTION FEE.
5. THE CONTRACTOR SHALL CONTACT THE DISTRICT OFFICE LISTED ON THE "APPLICATION FOR CONSTRUCTION PERMIT" TO ARRANGE FOR AN ACCEPTABLE CONSTRUCTION START DATE. HE SHALL NOTIFY THE CONSTRUCTION DIVISION BY TELEPHONE (818) 469-3128 AT LEAST THIRTY-FOUR HOURS BEFORE STARTING ANY WORK UNDER THIS CONTRACT.
6. APPROVAL OF THIS PLAN BY THE COUNTY OF LOS ANGELES DOES NOT CONSTITUTE A REPRESENTATION AS TO ACCURACY OF THE LOCAL RECORDS, OR THE EXISTENCE OR NON-EXISTENCE OF ANY UNDERGROUND UTILITY PIPE OR STRUCTURE WITHIN THE LIMITS OF THIS PROJECT. THIS NOTE APPLIES TO ALL PAGES.
7. ALL WORK SHALL BE IN ACCORDANCE WITH THE LATEST APPROVED EDITION OF THE "STANDARD SPECIFICATIONS FOR PUBLIC WORKS CONSTRUCTION INCLUDING SUPPLEMENT" AND THE LATEST SPECIAL PROVISIONS FOR THE CONSTRUCTION OF SANITARY SEWERS AND SHALL BE PROSECUTED ONLY IN THE PRESENCE OF THE DEPARTMENT OF PUBLIC WORKS PERSONNEL.
8. THE CONTRACTOR'S ATTENTION IS DIRECTED TO SECTION 7-19.4.5 OF THE STANDARD SPECIFICATIONS FOR PUBLIC WORKS CONSTRUCTION IN REGARD TO SAFETY SIGNALS AND SHALL CONFORM TO THE "MINIMUM PUBLIC SAFETY REQUIREMENTS" AS SHOWN ON LOS ANGELES DEPARTMENT OF PUBLIC WORKS STANDARD 8-2.
9. EXCAVATIONS ARE IN FEET ABOVE U.S.C. & G.S. 800 LEVEL DATUM OF 1985.
10. NO REVISIONS SHALL BE MADE IN THESE PLANS WITHOUT THE APPROVAL OF THE DIRECTOR OF PUBLIC WORKS.
11. NO REPRESENTATIVE OF PUBLIC WORKS WILL SURVEY OR LAY OUT ANY PORTION OF THE WORK.
12. SPACES TO WHICH THIS IMPROVEMENT IS TO BE CONSTRUCTED ARE SHOWN ON PLANS AND PROFILES. GRADE POINTS FOR TOP OF CURB, CENTERLINE OF STREET, OR CENTERLINE OF ALLEY, ARE SHOWN BY CIRCLES OR PROFILES AT ALL POINTS BETWEEN DESIGNATED POINTS. THE GRADE SHALL BE ESTABLISHED SO AS TO CONFORM TO A STRAIGHT LINE DRAWN BETWEEN SAID DESIGNATED POINTS.
13. THE PRIVATE ENGINEER SHALL FURNISH THE DEPARTMENT OF PUBLIC WORKS WITH BRACK SHEETS AND EXPOSITIONS FOR ALL HOUSE LATERALS AND VENT-PIPS BRACKETS AND SHALL PROVIDE STAKES FOR THEM AT THEIR PROPER LOCATION WITH STATIONING PLAINLY MARKED ON THE PLANS. HOUSE LATERALS SHALL BE CONSTRUCTED TO A MINIMUM ALTIMETER AT POINT PIPES FROM THE MET-LINE, EXCEPT AS SHOWN ON THE PLANS. HOUSE LATERALS FROM CHIMNEYS SHALL NOT HAVE AN ANGLE OF LESS THAN 45° WITH THE H.L. UNLESS ANY CHANGE IN ALIGNMENT SHALL BE REQUESTED IN WRITING BY THE PRIVATE ENGINEER.
14. THE PRIVATE ENGINEER SHALL FURNISH THE HOUSE LATERAL DEPTH AT THE PROPERTY LINE BELOW THE TOP CURB ELEVATION FOR EACH HOUSE LATERAL ON THE BRACK SHEET.
15. THE LATEST REVISED STANDARD PLAN OR DRAWING SHALL BE USED UNLESS OTHERWISE SPECIFICALLY NOTED.

CONSTRUCTION NOTES:

1. PROVIDE SURVEY STAKES ON THE PROPERTY LINE OR PROPERTY LINES PROCEEDED AT RIGHT ANGLES TO THE SEWER LINE AT THE CENTERLINE OF EACH MANHOLE.
2. VENTIFIED CLAY PIPE JOINTS SHALL BE TYPE "D" OR "B" PER STANDARD SPECIFICATIONS SECTION 800-2.
3. IF A POWER POLE IS WITHIN THREE FEET OF THE SEWER, THE SEWER SHALL BE ENCASED PER STANDARD PLAN 8-23 CASE II. TWO FEET OF THE SEWER SHALL BE ENCASED PER STANDARD PLAN 8-23 CASE II, UNLESS OTHERWISE APPROVED BY THE DIRECTOR OF PUBLIC WORKS.
4. ALL JOINTS BETWEEN CAST IRON PIPE AND VENTIFIED CLAY PIPE SHALL BE MADE WITH A RUBBER SLEEVE JOINT, TYPE "C" OR "D" (WITH ALUMINUM IF NECESSARY) PER STANDARD SPECIFICATIONS SECTION 800-2.
5. HOUSE LATERALS TO BE CONSTRUCTED WITH LAY RESPECT TO THE EDGE OF THE RUN LINE.
6. SLEEVE JOINTS MAY BE USED FOR CONNECTIONS TO MAINLINE SEWERS EXCEPT AS NOTED.
7. IF DURING THE COURSE OF CONSTRUCTION, IT IS DETERMINED THAT THERE IS LESS THAN FOUR FEET OF COVER OVER THE TOP OF MAINLINE HOUSE LATERAL PIPE, THE SEWER LINE IS NOT INDICATED BY THE PLAN, THE SEWER SHALL BE ENCASED PER STANDARD PLAN 8-23 CASE II, UNLESS OTHERWISE APPROVED BY THE DIRECTOR OF PUBLIC WORKS.
8. ALL STRUCTURES SHALL BE EITHER BRICK OR CONCRETE PER STANDARD PLAN 8-23 OR PRECAST CONCRETE SEWER MANHOLES PER STANDARD PLAN 8-23, OR REINFORCED PRECAST CONCRETE MANHOLE PER STANDARD PLAN 8-23, EXCEPT AS NOTED.
9. REPAIRS TO ALL TRENCHES WITHIN PAVED AREAS TO MEET LOS ANGELES COUNTY PUBLIC WORKS OR CALIFORNIA STATE HIGHWAY REQUIREMENTS BY ACCORDANCE WITH THE POINTS.
10. FULL COMPLIANCE WITH SECTION 800-1.9.4 OF THE STANDARD SPECIFICATIONS WILL BE REQUIRED FOR MANHOLE IN STREETS. CONSTRUCTION OF MANHOLE SHALL BE IN ACCORDANCE WITH THE STANDARD SPECIFICATIONS AND SHALL BE PROVIDED BY THE PERMITTEE PRIOR TO THE ISSUANCE OF A CERTIFICATE OF PARTIAL ACCEPTANCE.
11. ALL MANHOLE AND WELLS OUTSIDE OF STREET RIGHT OF WAY SHALL BE COMPACTED TO 95% MAXIMUM DENSITY AS DETERMINED BY ASTM D1557 METHOD. ALL OTHER AREAS SHALL BE COMPACTED TO 90% MAXIMUM DENSITY AS DETERMINED BY THE DEPARTMENT OF PUBLIC WORKS PRIOR TO ACCEPTANCE OF THE WORK BY THE COUNTY.
12. MANHOLE TOPS ON IMPROVED RIGHTS OF WAY TO BE LEVEL WITH FINISHED GRADE.
13. SEWERS TO BE TESTED FOR LEAKAGE PER SECTION 800-1.4 OF THE STANDARD SPECIFICATION AND SPECIAL PROVISIONS.

PROFILE, ALIGNMENT AND GRADE OF PAGE 1

SANITARY SEWERS

TO BE CONSTRUCTED IN

TRACT No. 35783-02

PRIVATE CONTRACT NO. 11376

INDEX 1332
 4 SHEETS; 7 PAGES

VERT. 1" = 8'
 SCALE: HORIZ. 1" = 40' MARCH, 1997

PREPARED IN THE OFFICES OF
 SIKAND ENGINEERING
 12290 BURBANK BLVD., VAN NUYS, CA 91411-3588
 BY: *Bullitt*
 REG. C.E. NO. 18920



THE FOLLOWING LATEST REVISED STANDARD PLANS ON FILE IN THE OFFICE OF THE DEPARTMENT OF PUBLIC WORKS SHALL APPLY IN THE CONSTRUCTION OF THIS PROJECT:

LEGEND	
MINIMUM PUBLIC SAFETY REQUIREMENTS	8-1
BRICK MANHOLE	8-2
STANDARD MANHOLE E.T.P.	8-3
RECORDS FOR SEWER PIPE	8-4
ENCLOSING AND ENCASING	8-5
EYE ON THE SUPPORT	8-6
LOCKING MANHOLE FRAME AND COVER	8-7
NON-REINFORCED PRECAST CONCRETE MANHOLE	8-8
ALLOWABLE TRENCH WIDTHS	8-9
ALLOWABLE TRENCH WIDTHS	8-10
ALLOWABLE TRENCH WIDTHS	8-11
ALLOWABLE TRENCH WIDTHS	8-12
ALLOWABLE TRENCH WIDTHS	8-13

COUNTY OF LOS ANGELES, CALIFORNIA

HARRY M. STONE
 DIRECTOR OF PUBLIC WORKS

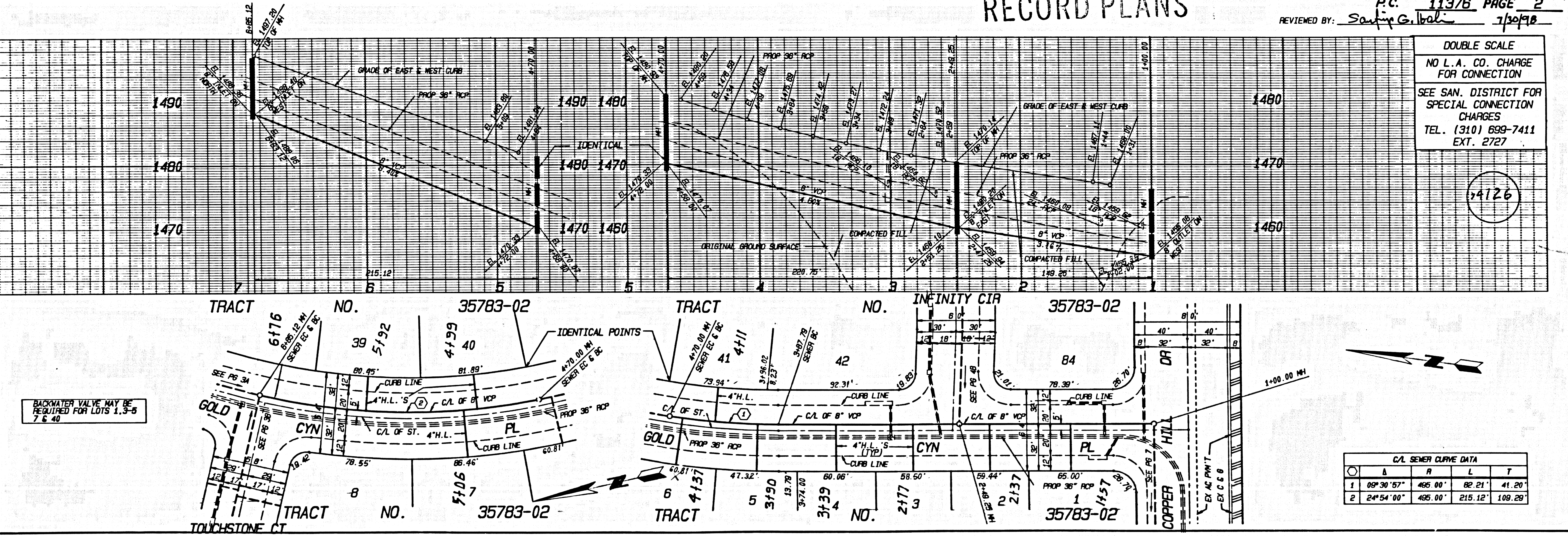
CHARLES M. CARRY
 CHIEF ENGINEER
 CO. SAN. DIST. NO. 13

APPROVED *Richard Bullitt* 7-30-98 (DATE)
 APPROVED *Charles M. Carry* 7-31-98 (DATE)
 CHECKED *Paul Dauter* 7-30-98 (DATE)
 REG. C.E. NO. 15511

SANTA CLARITA VALLEY, BLDG. DIST. 8.2

RECORD PLANS

P.C. 11376 PAGE 2
 REVIEWED BY: *Sauji G. Buli* 7/29/98



C/L SEWER CURVE DATA

Δ	R	L	T
1 09°30'57"	465.00'	82.21'	41.20'
2 24°54'00"	465.00'	215.12'	109.29'

RECEIVED 05 30 1998 .0M .PT

RECORD PLANS

REVIEWED BY *Samir G. Wali* DATE 7/30/98

P.C. 11376 PAGE 3

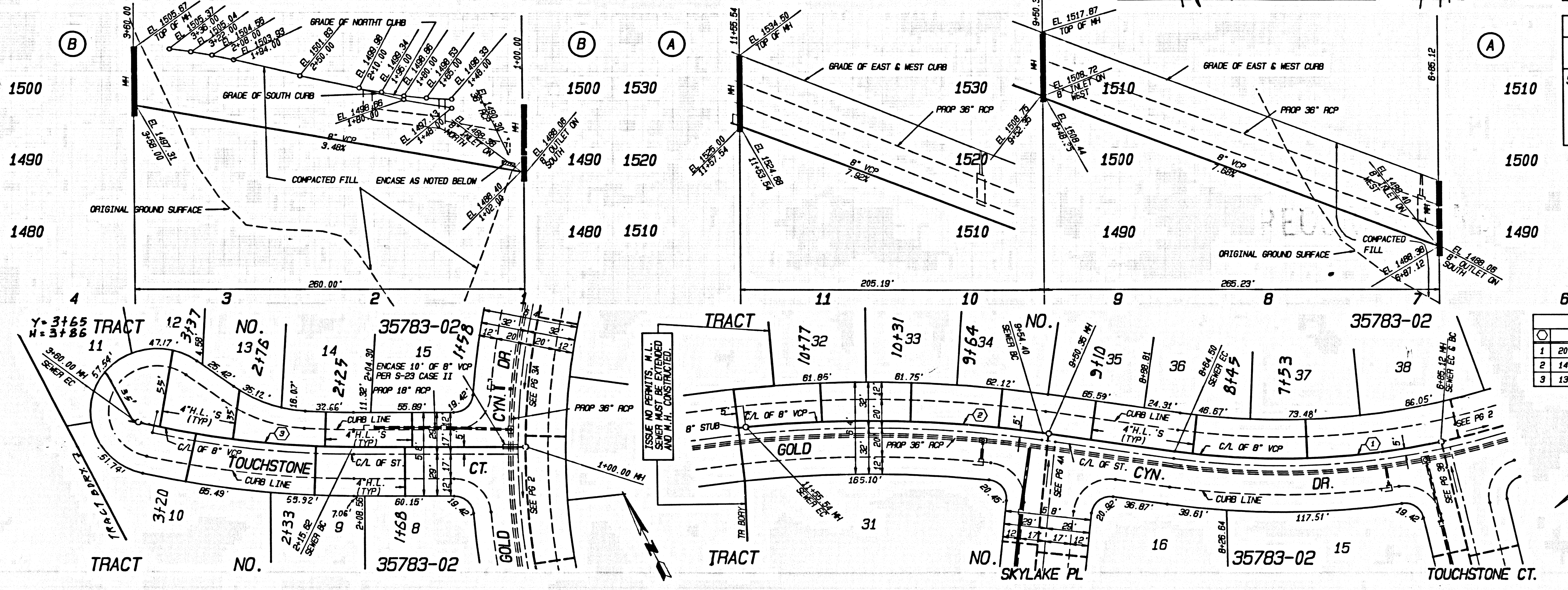
DOUBLE SCALE
NO L.A. CO. CHARGE FOR CONNECTION
SEE SAN. DISTRICT FOR SPECIAL CONNECTION CHARGES
TEL. (310) 699-7411 EXT. 2727

54727

C.A. SEWER CURVE DATA

Station	A	R	L	T
1	20° 45' 48"	485.00'	179.38'	90.69'
2	1° 18' 57"	805.00'	201.14'	101.09'
3	13° 54' 10"	595.00'	144.38'	72.54'

BACKWATER VALVE MAY BE REQUIRED FOR LOTS 13-15, 32-34, 36-38



REVIEWED BY *Samir G. Wali* DATE 7/30/98

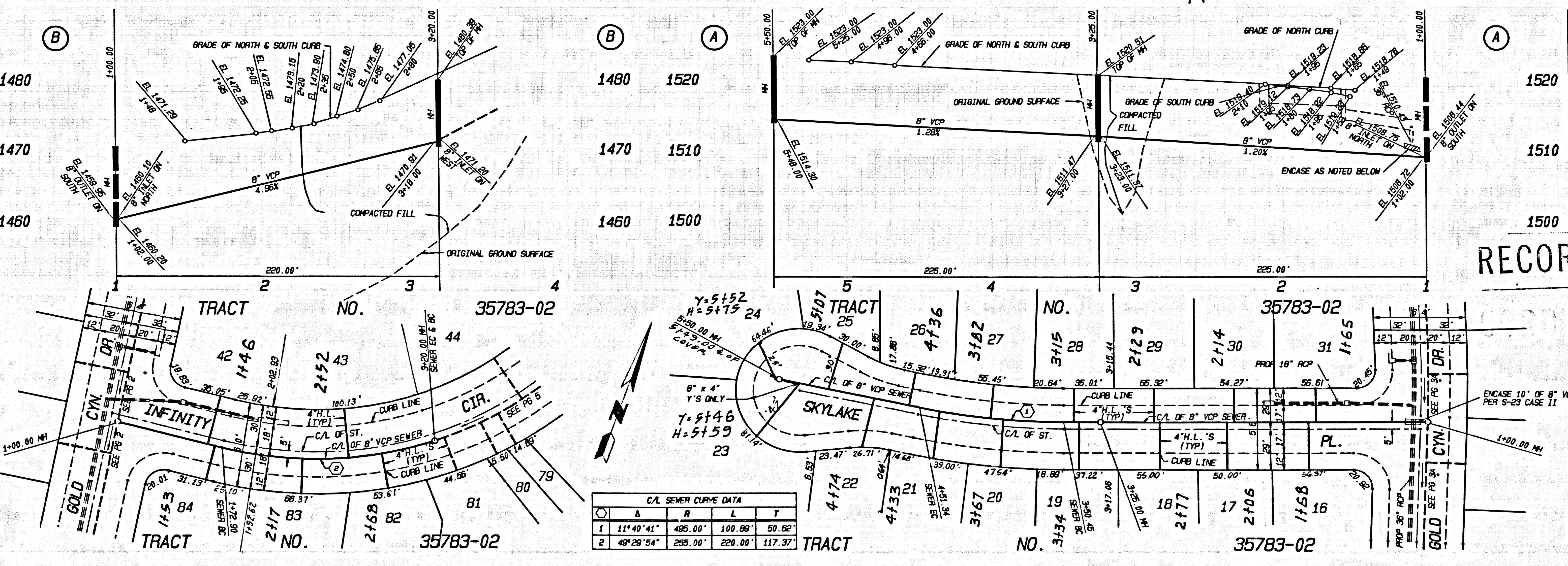
P.C. 11376 PAGE 4

DOUBLE SCALE
NO L.A. CO. CHARGE FOR CONNECTION
SEE SAN. DISTRICT FOR SPECIAL CONNECTION CHARGES
TEL. (310) 699-7411 EXT. 2727

54728

RECORD PLANS

BACKWATER VALVE MAY BE REQUIRED FOR LOTS 19, 42 83 & 84



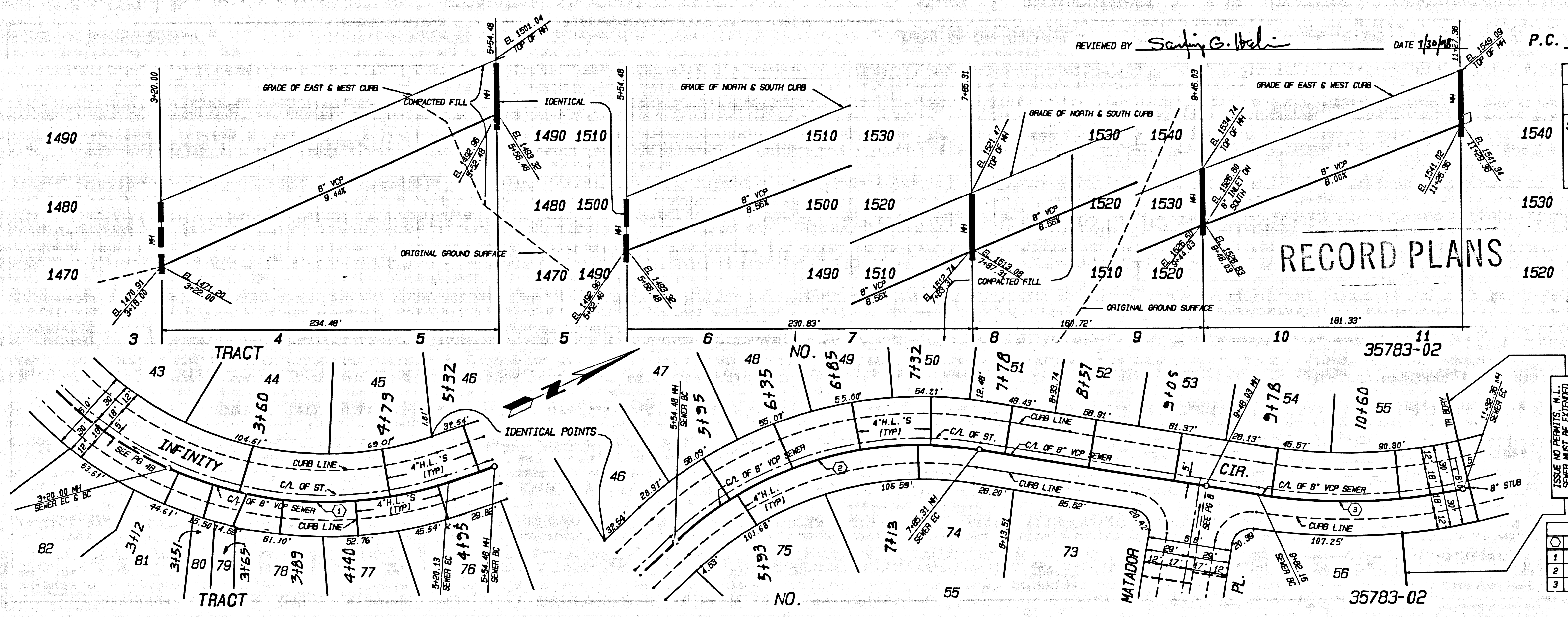
C.A. SEWER CURVE DATA

Station	A	R	L	T
1	11° 40' 41"	485.00'	100.80'	50.02'
2	40° 28' 54"	255.00'	220.00'	117.37'

5

18' NO. 32183-05 BC 11376

11/10/00 09:50:00 AM



REVIEWED BY *Santij G. Balci* DATE 7/10/90

P.C. 11376 PAGE 5

DOUBLE SCALE
NO L.A. CO. CHARGE FOR CONNECTION
SEE SAN. DISTRICT FOR SPECIAL CONNECTION CHARGES
TEL. (310) 699-7411 EXT. 2727

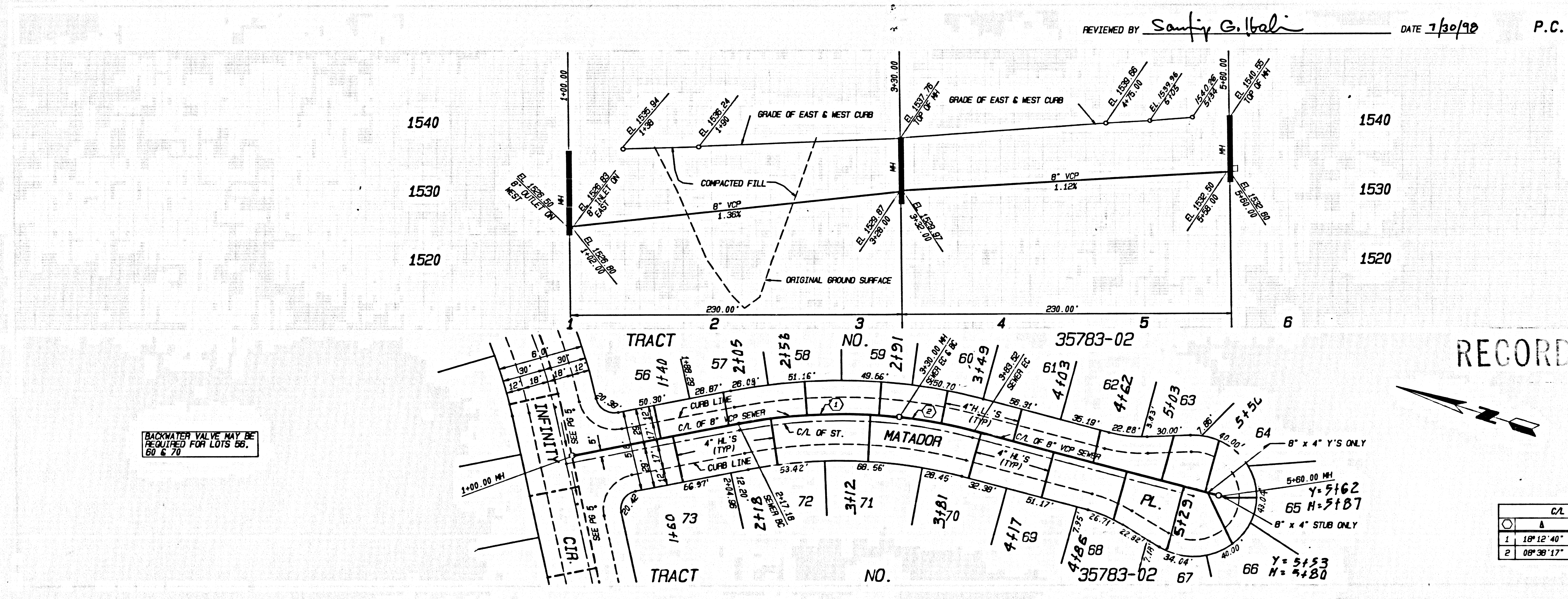
54729

BACKWATER VALVE MAY BE REQUIRED FOR LOTS 44, 45, 47-55 & 74-81

C/L SEWER CURVE DATA				
NO.	A	R	L	T
1	92° 41' 09"	255.00'	234.48'	126.26'
2	53° 58' 55"	245.00'	230.83'	124.76'
3	21° 53' 39"	380.00'	145.21'	73.50'

3

07E11 29 50-6873E .0M .PT



REVIEWED BY *Santij G. Balci* DATE 7/10/90

P.C. 11376 PAGE 6

DOUBLE SCALE
NO L.A. CO. CHARGE FOR CONNECTION
SEE SAN. DISTRICT FOR SPECIAL CONNECTION CHARGES
TEL. (310) 699-7411 EXT. 2727

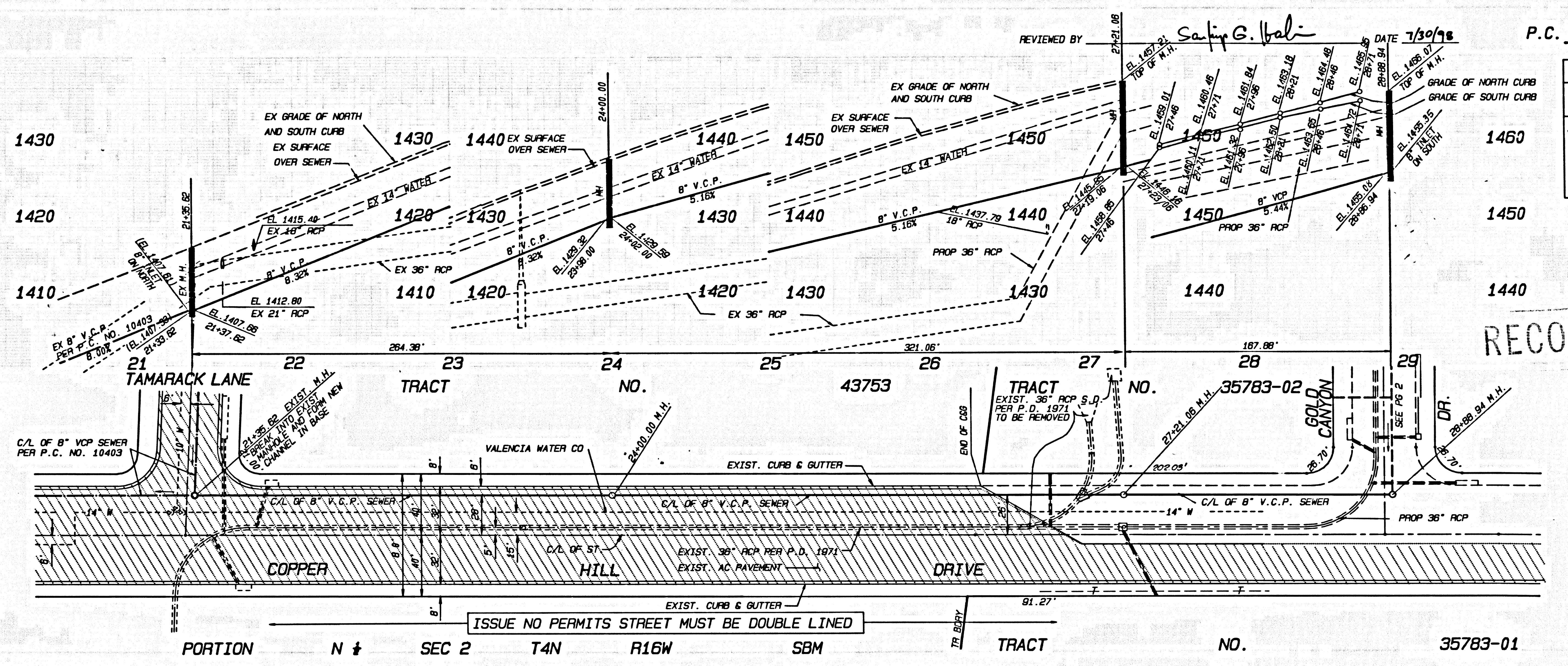
54730

BACKWATER VALVE MAY BE REQUIRED FOR LOTS 60, 61 & 70

C/L SEWER CURVE DATA				
NO.	A	R	L	T
1	10° 12' 40"	355.00'	112.84'	56.90'
2	08° 30' 17"	355.00'	53.52'	26.81'

3

11/10/2010 10:00 AM



4

TR. NO. 328783-05 BC 11376 .0M .RT

VOID

PAGE

11/19/98 3:53 PM