

PRIVATE CONTRACT SEWER PLAN CONSTRUCTION NOTES

- Private survey stakes at the property line or property line produced at right angles to the sewer and at the location of each manhole.
- Private city pipe joints shall be type "C" or "D" per Standard Specifications Section 208-7.
- Prior to issuance of any permit, the contractor shall file a permit for excavations and trenches from the State of California Division of Volcanic Activity and a Certificate of Worker's Compensation on file with the Department of Public Works (Form 1000, etc.) must be filed with the permit application.
- All manhole bases shall be constructed with concrete. The sewer shall be installed on the ground surface or in a trench. The sewer shall be installed on the ground surface or in a trench. The sewer shall be installed on the ground surface or in a trench.
- House laterals shall be constructed with inverts at the property line 6 feet below curb grade unless otherwise noted.
- Manhole laterals may be used for connections to manhole sewer access as noted.
- If during the course of construction, it is determined that there is less than four feet of cover over the top of a manhole or house lateral V.C.P. sewer which is not indicated on the plans, the pipe shall be increased per Standard Plan S-23, Case 4, unless otherwise approved by the Director of Public Works.
- All structures shall be either brick sewer manholes per Standard Plan S-3 or precast concrete sewer manholes per Standard Plan S-36, or reinforced precast concrete manhole per Standard Plan S-6, except as noted.
- Reinforced concrete manhole shall be installed in accordance with the Standard Specifications for Public Works Construction in regard to safety on site and shall conform to the "Minimum Public Safety Requirements" as shown on Los Angeles Department of Public Works, Standard P.C. 7 (See Page 36-60, Chapter 36 of the Land Development Procedure Manual for a copy).
- Excavations are to be done in accordance with U.S.C. & G.S. and level datum of 1928.
- No excavations shall be made in those areas without the approval of the Director of Public Works.
- No representative of the Department of Public Works shall survey or lay out any portion of the work.
- Grades to which this manhole is to be constructed are shown on plans and profiles. Gravel points for all manhole openings of streets or conduits of streets and shown by lines on profiles at all points between designated points. The grade shall be established as to be conform to the street grade between designated points.
- The private engineer shall furnish the Department of Public Works with ground sheets and all other data and information required for the construction of the sewer system. The private engineer shall furnish the Department of Public Works with ground sheets and all other data and information required for the construction of the sewer system.
- The private engineer shall furnish the Department of Public Works with ground sheets and all other data and information required for the construction of the sewer system.
- The private engineer shall furnish the Department of Public Works with ground sheets and all other data and information required for the construction of the sewer system.
- The private engineer shall furnish the Department of Public Works with ground sheets and all other data and information required for the construction of the sewer system.

BEST MANAGEMENT PRACTICES FOR CONSTRUCTION ACTIVITIES

- Erosion sediments and other pollutants must be retained on site and may not be transported from the site as described in the permit.
- Stockpiles of earth and other construction related materials must be protected from being transported from the site by the force of wind or water.
- Earth and other materials must be stored in accordance with their filing and are not to be stored on the site and surface water. All storage containers are to be protected from the weather. Spills must be cleaned up immediately and disposed of in a proper manner. Spills may not be washed into the drainage system.
- Excavation or concrete may not be washed into the public way or any other drainage system. Precautions shall be made to retain concrete wastes on site until they can be disposed of in a safe manner.
- Tree and construction related soil erosion must be controlled through a control response to prevent contamination of rainwater and disposal by use.
- Sediments and other materials may not be transported from the site by water runoff. The construction activities materials must be contained so as to prevent materials from being deposited into the public way. Accidental deposits must be removed immediately and may not be washed down by rain or other means.
- Any device with attached hose or outlet of vapors must be installed so as to inhibit erosion by wind and water.
- Other

NO CONNECTION FOR THE DISPOSAL OF INDUSTRIAL WASTES SHALL BE MADE TO SEWER SYSTEMS ON THESE DRAINAGE UNITS, A PERMIT FOR INDUSTRIAL WASTEWATER DISCHARGE HAS BEEN ISSUED BY THE SANITATION DISTRICTS FOR SAID CONNECTION.

BEFORE BREAKING INTO OR CONSTRUCTION ON A COUNTY SANITATION DISTRICT SEWER AND PRIOR TO FINAL ACCEPTANCE OF THE PROJECT, A SANITATION DISTRICT INSPECTOR SHALL BE NOTIFIED BY PHONE AT (818) 832-8808 SO THAT REQUIRED INSPECTIONS CAN BE MADE.

PRIVATE CONTRACT SEWER GENERAL NOTES

- A sewer construction permit shall be obtained and a fee paid for construction inspection and record copies to the Department of Public Works of the Permit Center, 400 South Fremont Avenue, 8th Floor, Accounts of issue 72 hours prior to starting work under the permit. Copies of all permit applications, plans, and other required permits, such as Right-of-Way, etc., must be filed with the permit application.
- Prior to issuance of any permit, the contractor shall file a permit for excavations and trenches from the State of California Division of Volcanic Activity and a Certificate of Worker's Compensation on file with the Department of Public Works (Form 1000, etc.) must be filed with the permit application.
- If work is done in a State Highway, a permit must be obtained from the State of California Division of Highways, 120 South Spring Street, Los Angeles, California.
- When work is done in a contract city, the contractor must contact the Director of Public Works of that city to determine the location to use the manhole file.
- The contractor shall contact the contract office based on the "Application for Construction Permit" to arrange for an acceptable construction start date.
- Approval of this plan by the County of Los Angeles does not constitute a representation of its accuracy or the location of or the existence or non-existence of any underground utility pipe or structure within the limits of the project. The contractor shall be responsible for the location of all utilities.
- All work shall be in accordance with the latest approved edition of the "Standard Specifications for Public Works Construction" including supplements and the latest Special Provisions for the Construction of Sanitary Sewers and shall be procured only at the presence of the Department of Public Works personnel (See Pages 46-34 through 46-43 for a copy of the special provisions).
- The contractor's attention is directed to Section 7-104.1 of the Standard Specifications for Public Works Construction in regard to safety on site and shall conform to the "Minimum Public Safety Requirements" as shown on Los Angeles Department of Public Works, Standard P.C. 7 (See Page 36-60, Chapter 36 of the Land Development Procedure Manual for a copy).
- Excavations are to be done in accordance with U.S.C. & G.S. and level datum of 1928.
- No excavations shall be made in those areas without the approval of the Director of Public Works.
- No representative of the Department of Public Works shall survey or lay out any portion of the work.
- Grades to which this manhole is to be constructed are shown on plans and profiles. Gravel points for all manhole openings of streets or conduits of streets and shown by lines on profiles at all points between designated points. The grade shall be established as to be conform to the street grade between designated points.
- The private engineer shall furnish the Department of Public Works with ground sheets and all other data and information required for the construction of the sewer system. The private engineer shall furnish the Department of Public Works with ground sheets and all other data and information required for the construction of the sewer system.
- The private engineer shall furnish the Department of Public Works with ground sheets and all other data and information required for the construction of the sewer system.
- The private engineer shall furnish the Department of Public Works with ground sheets and all other data and information required for the construction of the sewer system.
- The private engineer shall furnish the Department of Public Works with ground sheets and all other data and information required for the construction of the sewer system.
- The private engineer shall furnish the Department of Public Works with ground sheets and all other data and information required for the construction of the sewer system.

SEWER CONSTRUCTION

STORMWATER POLLUTION CONTROL REQUIREMENTS FOR SEWER CONSTRUCTION

- Show all applicable notes on Attachment.
- The following items are attached to, but not limited to, the Best Management Practice Handbook, California Stormwater Quality Team Force, Sacramento, California 1981, at the latest revised edition, may apply during construction (additional measures may be required if not otherwise specified by County).

CAUTION - DRAINAGE OPERATIONS

- CA001 - PARKING OPERATIONS
- CA002 - FUELING OPERATIONS
- CA003 - STRUCTURE CONSTRUCTION AND PAINTING
- CA004 - MATERIAL DELIVERY AND STORAGE
- CA005 - SOIL WASH MANAGEMENT
- CA006 - NEIGHBORHOOD WASTE MANAGEMENT
- CA007 - CONCRETE WASTE MANAGEMENT
- CA008 - SANITARY/SEWER WASTE MANAGEMENT
- CA009 - FUEL AND EQUIPMENT CLEANING
- CA010 - WHEELS AND EQUIPMENT TIDING

ESCROW - VEHICLE AND EQUIPMENT MAINTENANCE

- ESC01 - SCHEDULING
- ESC02 - PREVENTION OF EXISTING VEGETATION
- ESC03 - SEEDING AND PLANTING
- ESC04 - MULCHING
- ESC05 - SEVERITIES AND MATS
- ESC06 - BEST PRACTICES
- ESC07 - TEMPORARY STREAM COVERING
- ESC08 - CONSTRUCTION ROAD STABILIZATION
- ESC09 - STABILIZED CONSTRUCTION ENTRANCE
- ESC10 - STORM URBAN RAIN FLOW CONTROL

PROFILE, ALIGNMENT AND GRADE OF
SANITARY SEWERS
TO BE CONSTRUCTED IN
TRACT NO. 52134-01
PRIVATE CONTRACT NO. 11380

INDEX 2305
4 SHEET(S) 8 PAGES (54426)

VERT. 1" = 4'
HORIZ. 1" = 40'
JANUARY, 1998

PREPARED IN THE OFFICES OF
THE KEITH COMPANIES
2955 REDHILL AVE., COSTA MESA
CA. 92626

BY: 2/22/98 1/18/98 (114) 540-0800
REG. C.E. No. 55727 TEL. NO. (714) 540-0800
EXP. 12/31/00

THE FOLLOWING LATEST REVISED STANDARD PLANS ON FILE IN THE OFFICE OF THE DEPARTMENT OF PUBLIC WORKS SHALL APPLY IN THE CONSTRUCTION OF THIS PROJECT:

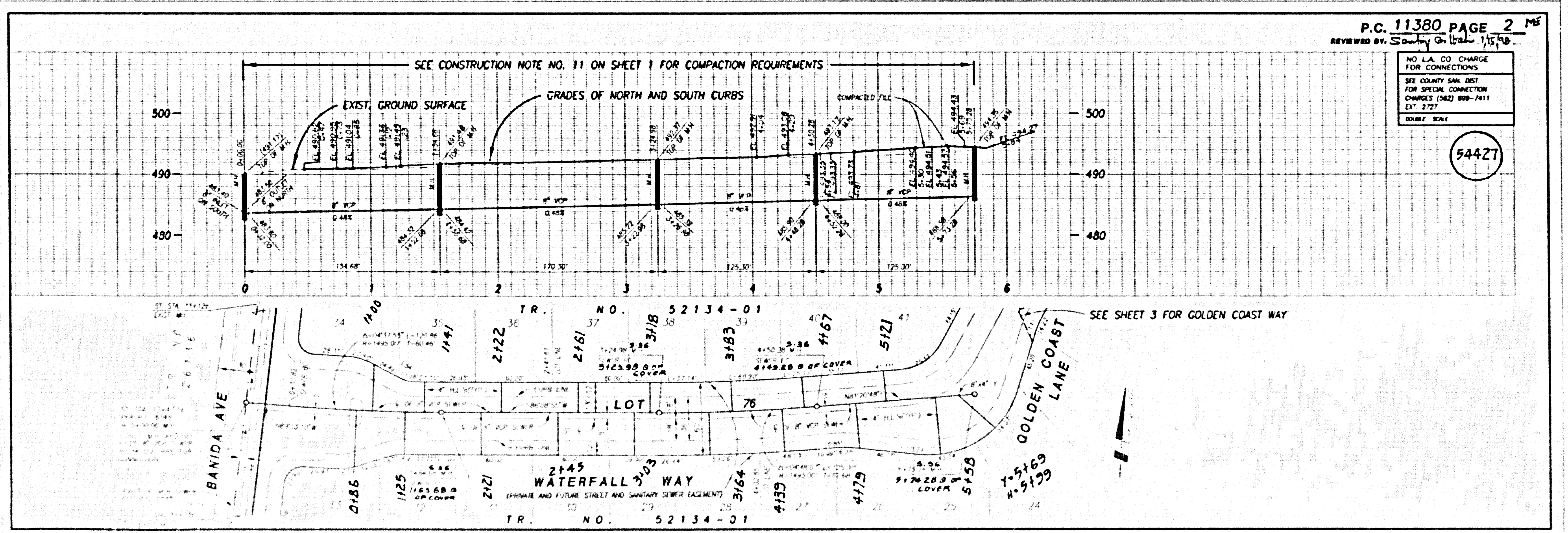
LEGEND	S-1 (2000-0)
MINIMUM PUBLIC SAFETY REQUIREMENTS	S-2
BRICK MANHOLE	S-3 (2010-0)
REINFORCED PRECAST CONCRETE MANHOLE	S-4 (2010-0)
BREAK INTO EXISTING MANHOLE	S-13 (2010-0)
STANDARD MANHOLE STEP	S-17 (2010-0)
BEARING FOR SEWER PIPE	S-21 (2010-0)
CRACKING AND ENCASEMENT	S-23 (2010-0)
WIRE ON TEE SUPPORT	S-24 (2010-0)
ALUMINUM FRENCH BROTHS	S-31 (2010-0)
LOCKING MANHOLE FRAME AND COVER	S-35
NON-REINFORCED PRECAST CONCRETE MANHOLE	S-36 (2001-0)

COUNTY OF LOS ANGELES, CALIFORNIA

HARRY W. STONE DIRECTOR OF PUBLIC WORKS
CHARLES W. CARRY CHIEF ENGINEER

APPROVED: 1/18/98 1/18/98
CHECKED: 1/18/98 1/18/98
REG. C.E. No. 45691 (JTS)

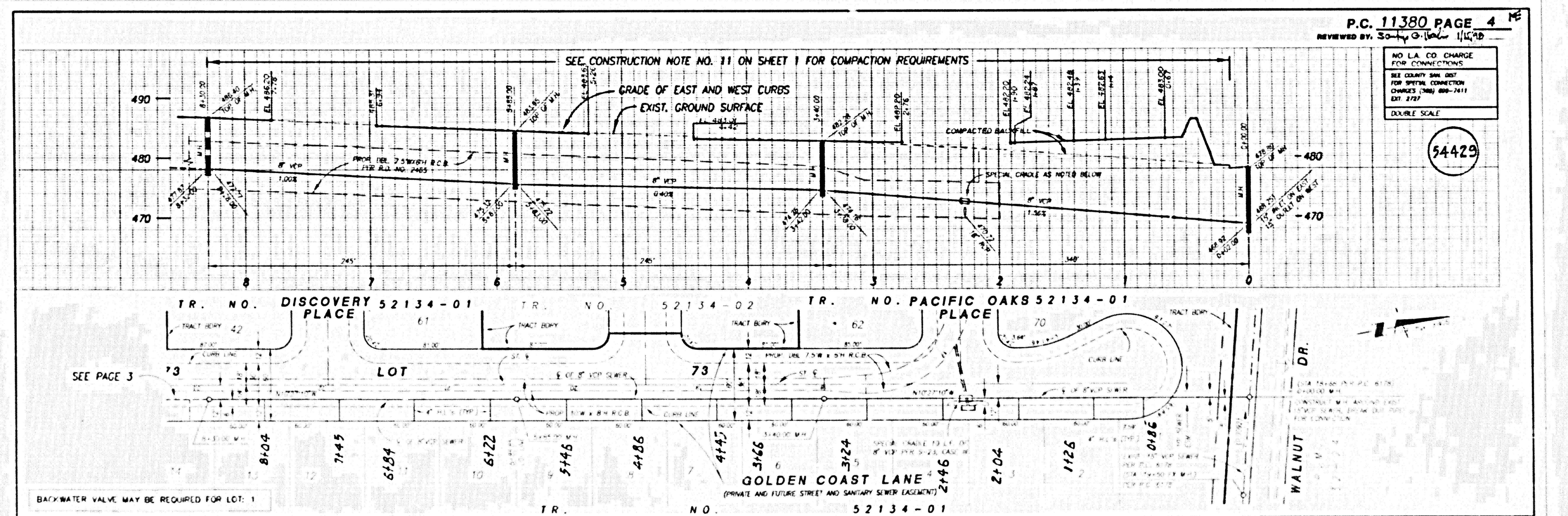
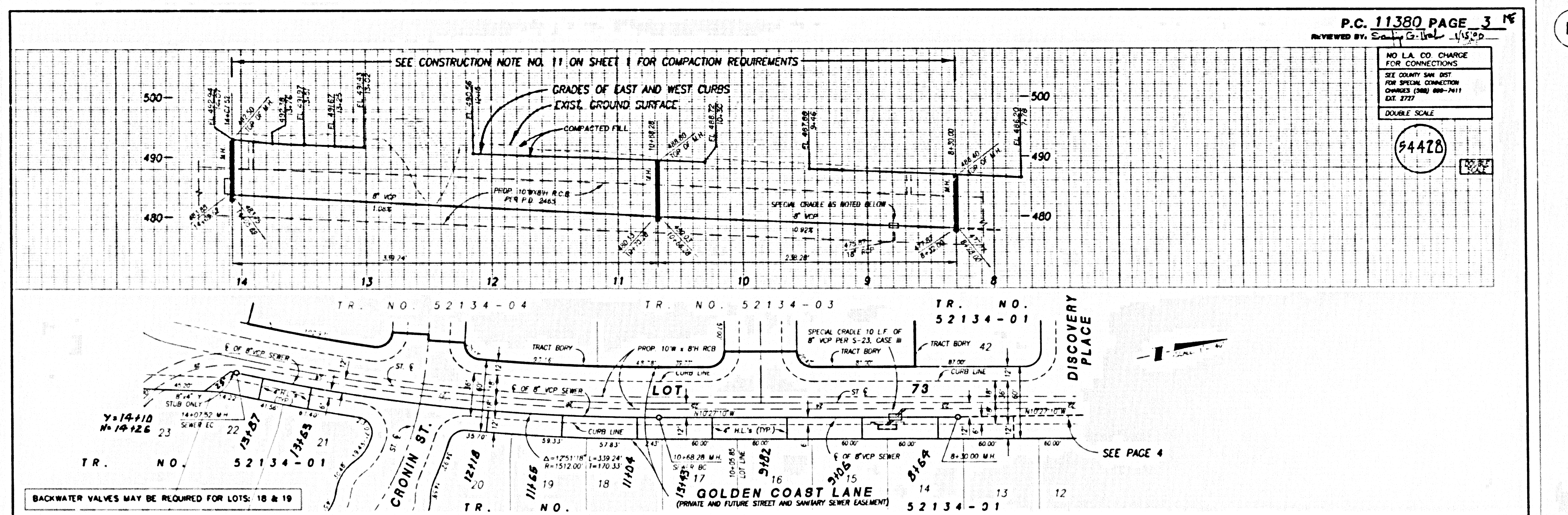
LA PUENTE BLDG. DIST. NO. 2



P.C. 11380 PAGE 2
REVIEWED BY: 1/18/98

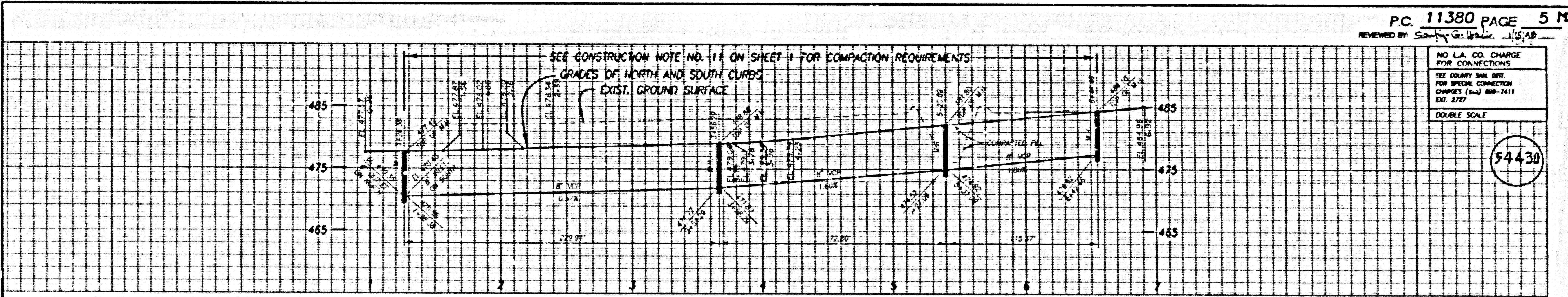
NO L.A. CO CHARGE FOR CONNECTIONS
SEE COUNTY SAN DIST FOR SPECIAL CONNECTION CHARGES (S&D) 889-7411 EXT. 227
DOUBLE SCALE

(54427)



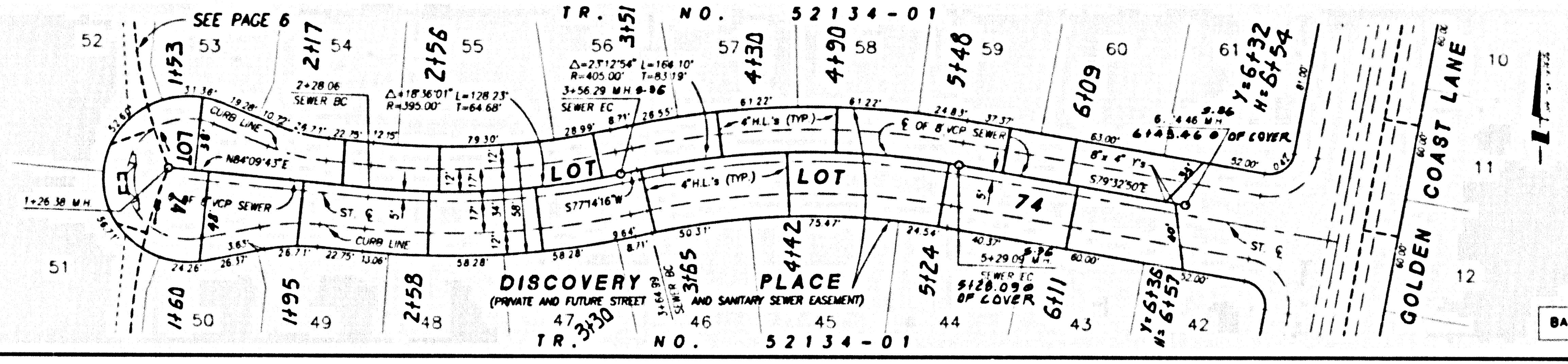
5

0831T 09 8TH CIVIL WORK 18152 T0ART

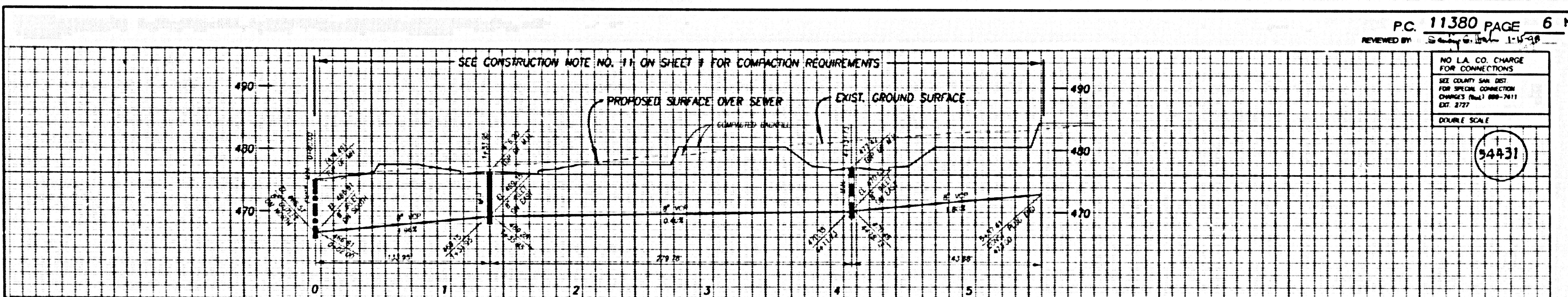


NO L.A. CO. CHARGE FOR CONNECTIONS
SEE COUNTY SAN. DIST. FOR SPECIAL CONNECTION CHARGES (S&D) 888-7411 EXT. 8777
DOUBLE SCALE

54430

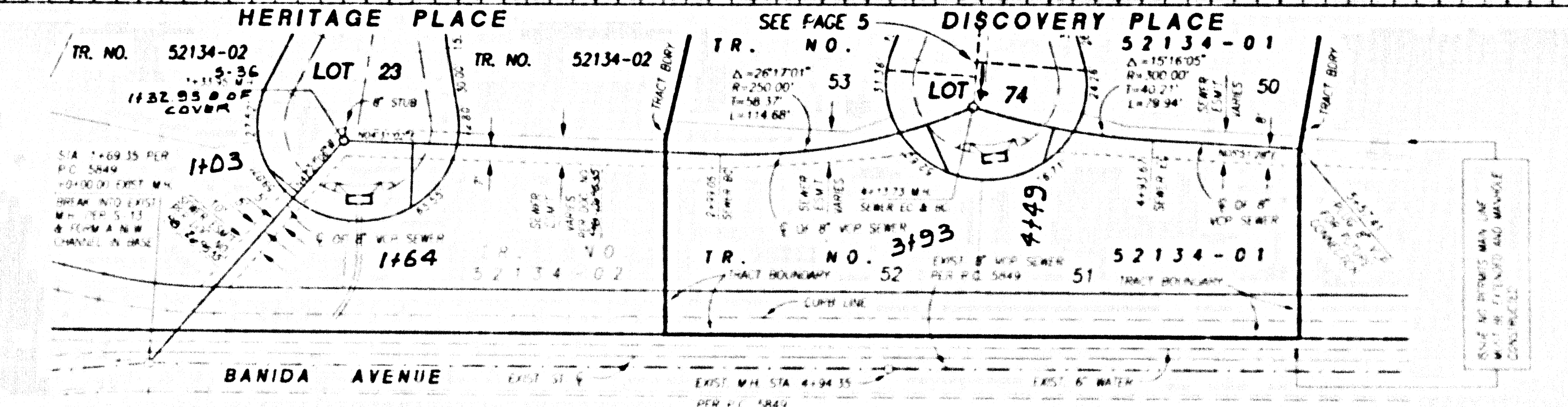


BACKWATER VALVE MAY BE REQUIRED FOR LOT: 46



NO L.A. CO. CHARGE FOR CONNECTIONS
SEE COUNTY SAN. DIST. FOR SPECIAL CONNECTION CHARGES (S&D) 888-7411 EXT. 8777
DOUBLE SCALE

54431



BACKWATER VALVE MAY BE REQUIRED FOR LOT: 51

3
 08BIT 09 2TH QMAMWOP 4812 TCACT
 11380

