

B.M. CL 4622 ELEV. 1147.564  
 SMALL BEAT SPK & TAG 80 - S25 SW END OF BRIDGE  
 48 - 155E 1477 5/10 C/L LAKE HUGHES RD  
 NEWHALL QUAD.19 83

PRIVATE ENGINEER'S NOTICE TO CONTRACTORS  
 THE EXISTENCE AND LOCATION OF ANY UNDERGROUND UTILITY PIPES OR STRUCTURES SHOWN ON THESE PLANS ARE OBTAINED BY A SEARCH OF THE AVAILABLE RECORDS TO THE BEST OF OUR KNOWLEDGE. THERE ARE NO EXISTING UTILITIES EXCEPT AS SHOWN ON THIS MAP. THE CONTRACTOR IS REQUIRED TO TAKE DUE PRECAUTIONARY MEASURES TO PROTECT THE UTILITY LINES SHOWN AND ANY OTHER LINES NOT BEING RECORDED OR NOT SHOWN ON THIS DRAWING. PRIOR TO EXCAVATION THE CONTRACTOR SHALL CALL UNDERGROUND SERVICE ALERT AT 800-422-4133.

*[Signature]* 11/2/99  
 REG. C.E. NO. 55069 DATE

GENERAL NOTES:  
 1. ELEVATIONS ARE IN FEET ABOVE U.S.C. & G.S. SEA LEVEL DATUM OF 1929.  
 2. NO RECORDS SHALL BE MADE IN THESE PLANS WITHOUT THE APPROVAL OF THE DIRECTOR OF PUBLIC WORKS.  
 3. NO REPRESENTATIVE OF THE DEPARTMENT OF PUBLIC WORKS WILL SURVEY OR LAY OUT ANY PORTION OF THE WORK.  
 4. GRADES TO WHICH THIS IMPROVEMENT IS TO BE CONSTRUCTED ARE SHOWN ON PLANS AND PROFILES. GRADE POINTS FOR TOP OF CURB, CENTER LINE OF STREET OR CENTERLINE OF ALLEYS ARE SHOWN BY CIRCLES ON PROFILES. AT ALL POINTS BETWEEN DESIGNATED POINTS THE GRADE SHALL BE ESTABLISHED SO AS TO CONFORM TO A STRAIGHT LINE DRAWN BETWEEN SAID DESIGNATED POINTS.  
 5. THE PRIVATE ENGINEER SHALL FURNISH THE DEPARTMENT OF PUBLIC WORKS WITH GRADE SHEETS AND STATIONING FOR ALL HOUSE LATERALS AND 8" V.C.P. SEWERS. BRANCHES AND MAINS SHALL BE STATIONED FROM THEIR PROPER LOCATIONS WITH STATIONING PLAINS MARKED. ALL HOUSE LATERALS SHALL BE CONSTRUCTED IN A STRAIGHT ALIGNMENT AT RIGHT ANGLES FROM THE MAIN LINE SEWER EXCEPT AS SHOWN ON THE PLANS. HOUSE LATERALS FROM CHIMNEYS SHALL NOT HAVE AN ANGLE OF LESS THAN 45° WITH THE MAIN LINE SEWER. ANY CHANGE IN ALIGNMENT SHALL BE REQUESTED BY WRITING BY THE PRIVATE ENGINEER.  
 6. THE PRIVATE ENGINEER SHALL FURNISH THE HOUSE LATERAL DEPTH AT THE PROPERTY LINE BELOW THE TOP OF CURB ELEVATION FOR EACH HOUSE LATERAL ON THE GRADE SHEET.  
 7. BEFORE WORK CAN BE STARTED, THE CONTRACTOR MUST OBTAIN A PERMIT TO EXCAVATE IN COUNTY STREETS FROM THE CONSTRUCTION DIVISION OF THE LOS ANGELES DEPARTMENT OF PUBLIC WORKS. OFFICE NO. 1100, 1100 N. GATE STREET, LOS ANGELES, CALIF. 90012. A PERMIT MUST BE OBTAINED FROM THE CITY ENGINEER AND RECORDS DIVISION, ALHAMBRA, CALIF. 91801, 8TH FLOOR, TO COVER THE COST OF CONSTRUCTION INSPECTION AND RECORD PLANS. ALHAMBRA, CALIF. 91801.  
 8. IF WORK IS TO BE DONE IN A STATE HIGHWAY, A PERMIT MUST BE OBTAINED FROM THE STATE OF CALIFORNIA, DIVISION OF HIGHWAYS, 120 SOUTH SPRING STREET, LOS ANGELES, CALIFORNIA.  
 9. APPROVAL OF THE PLAN BY THE COUNTY OF LOS ANGELES DOES NOT CONSTITUTE A REPRESENTATION AS TO THE ACCURACY OF THE LOCATION OF OR THE EXISTENCE OR NON-EXISTENCE OF ANY UNDERGROUND UTILITY PIPE, OR STRUCTURE WITHIN THE LIMITS OF THIS PROJECT. THIS NOTE APPLIES TO ALL PAGES.  
 10. REFER TO SECTION 7.16.4.1 OF THE STANDARD SPECIFICATIONS REGARDING SAFETY ORDERS.  
 11. PRIOR TO THE ISSUANCE OF THE REQUIRED SEWER CONSTRUCTION PERMIT, THE CONTRACTOR SHALL OBTAIN AND FILE WITH THE DEPARTMENT OF PUBLIC WORKS COPIES OF A PERMIT TO EXCAVATE IN COUNTY STREETS FROM THE DEPARTMENT OF PUBLIC WORKS, A PERMIT FOR EXCAVATIONS AND TRENCHES FROM THE STATE OF CALIFORNIA, A DIVISION OF INDUSTRIAL SAFETY AND A CERTIFICATE OF HOMEOWNERS' COMPENSATION INSURANCE WITH THE DEPARTMENT OF PUBLIC WORKS, ROOM 1100, 1100 N. GATE STREET, ALHAMBRA, CALIF. 91801, WITH FLOOR, NAMED AS THE CERTIFICATE HOLDER TO BE FORWARDED 30 DAYS PRIOR TO COMMENCEMENT OF WORK.  
 12. REFER TO SECTION 7.16.4.1 OF THE STANDARD SPECIFICATIONS REGARDING SAFETY ORDERS.  
 13. PRIOR TO THE ISSUANCE OF THE REQUIRED SEWER CONSTRUCTION PERMIT, THE CONTRACTOR SHALL OBTAIN AND FILE WITH THE DEPARTMENT OF PUBLIC WORKS COPIES OF A PERMIT TO EXCAVATE IN COUNTY STREETS FROM THE DEPARTMENT OF PUBLIC WORKS, A PERMIT FOR EXCAVATIONS AND TRENCHES FROM THE STATE OF CALIFORNIA, A DIVISION OF INDUSTRIAL SAFETY AND A CERTIFICATE OF HOMEOWNERS' COMPENSATION INSURANCE WITH THE DEPARTMENT OF PUBLIC WORKS, ROOM 1100, 1100 N. GATE STREET, ALHAMBRA, CALIF. 91801, WITH FLOOR, NAMED AS THE CERTIFICATE HOLDER TO BE FORWARDED 30 DAYS PRIOR TO COMMENCEMENT OF WORK.

STORMWATER POLLUTION CONTROL REQUIREMENTS FOR SEWER CONSTRUCTION  
 A. ERODED SEDIMENTS AND OTHER POLLUTANTS MUST BE RETAINED ON SITE AND TRANSPORTED FROM THE SITE VIA SHEET PILES, SHALES, AREA DRAINS, NATURAL DRAINAGE COURSES OR BINS.  
 B. STOCKPIRES OF EARTH AND OTHER CONSTRUCTION RELATED MATERIALS MUST BE PROTECTED FROM BEING TRANSPORTED FROM THE SITE BY THE FORCES OF WIND OR WATER.  
 C. FUELS, OILS, GREASES AND OTHER TOXIC MATERIALS MUST BE STORED IN ACCORDANCE WITH THEIR LISTING AND ARE NOT TO CONTAMINATE THE SOIL AND SURFACE WATERS. ALL APPROVED STORAGE CONTAINERS ARE TO BE PROTECTED FROM THE WEATHER. SPILLS MUST BE CLEANED UP IMMEDIATELY AND DISPOSED OF IN A PROPER MANNER. SPILLS MAY NOT BE WASHED INTO THE DRAINAGE SYSTEM.  
 D. EXCESS OR WASTE CONCRETE MAY NOT BE WASHED INTO THE PUBLIC WAY OR ANY OTHER DRAINAGE SYSTEM. PROCEDURES SHALL BE MADE TO RETAIN CONCRETE WASTES ON SITE UNTIL THEY CAN BE DEPOSITED INTO A COVERED RECEPTACLE TO PREVENT CONTAMINATION OF THE PUBLIC WAY. ACCIDENTAL DEPOSITIONS MUST BE CLEANED UP IMMEDIATELY AND MAY NOT BE BURNED DOWN BY FIRES OR OTHER MEANS.  
 E. SEWAGE AND OTHER MATERIALS MAY NOT BE TRACKED FROM THE SITE BY VEHICLES. THE CONSTRUCTION ENTRANCE INCLUDING DRIVEWAYS SHALL BE STABILIZED AS TO PREVENT SEDIMENT FROM BEING DEPOSITED INTO THE PUBLIC WAY. ACCIDENTAL DEPOSITIONS MUST BE CLEANED UP IMMEDIATELY AND MAY NOT BE BURNED DOWN BY FIRES OR OTHER MEANS.  
 F. ANY SLOPES WITH EXPOSED SOILS OR COVERED VEGETATION MUST BE STABILIZED SO AS TO PREVENT EROSION BY WIND AND WATER.  
 G. THE FOLLOWING MAPS ARE REFERRED TO, BUT NOT LIMITED TO, THE BEST MANAGEMENT PRACTICE HANDBOOK, CALIFORNIA STORMWATER QUALITY TREATMENT TECHNIQUES, CALIFORNIA, OR THE LATEST REVISION THEREOF. MAY APPLY PUBLIC CONSTRUCTION (ADDITIONAL MEASURES MAY BE REQUIRED IF DEEMED APPROPRIATE BY COUNTY).

PROFILE, ALIGNMENT AND GRADE OF  
**SANITARY SEWERS**  
 TO BE CONSTRUCTED IN  
**TRACT NO. 48151**  
 PRIVATE CONTRACT NO. 11404

INDEX: 1174  
 ...2...SHEETS; ...3...PAGES  
 SCALE: VERT: 1" = 8'  
 HORIZ: 1" = 40'  
 AUGUST, 1999

PREPARED IN THE OFFICES OF  
**LAND DESIGN CONSULTANTS, INC.**  
 225 So. Lake Ave., Suite 600, Pasadena, California 91101  
 PH: (626) 578-7000 FAX: (626) 578-7373

BY: *[Signature]* 11/2/99  
 REG. C.E. NO. 21649 EXP. 9-30-2001

THE FOLLOWING LATEST REVISED STANDARD PLANS ON FILE IN THE OFFICE OF THE PUBLIC WORKS SHALL APPLY IN THE CONSTRUCTION OF THIS PROJECT:

LEGEND	2000-0
MINIMUM PUBLIC SAFETY REQUIREMENTS	2000-0
BRICK MANHOLE	2003-0
RECTANGULAR MANHOLE FRAME & COVERS	2011-0
STANDARD MANHOLE STEP	2019-0
RECORDING FOR SEWER PIPE	2021-0
CRADLING AND ENCASUREMENT	2024-0
PIPE ON TEE SUPPORT	2024-0
ALLOWABLE TRENCH WIDTHS	2027-0
LOCKING MANHOLE FRAME AND COVER	2010-0
NON-REINFORCED PRECAST CONCRETE MANHOLE	2001-0
BREAK INTO EXISTING MANHOLE	2010-0
SPECIAL HOUSE LATERALS	145-25
EROSION PROTECTION IN STEEP SLOPES	2020-0
ANCHOR BLOCKS	221-0

\* REFERS TO SANITARY SEWER PROCEDURAL MANUAL  
 \* REFERS TO A.D.W.A. STD. DRAWING NO.

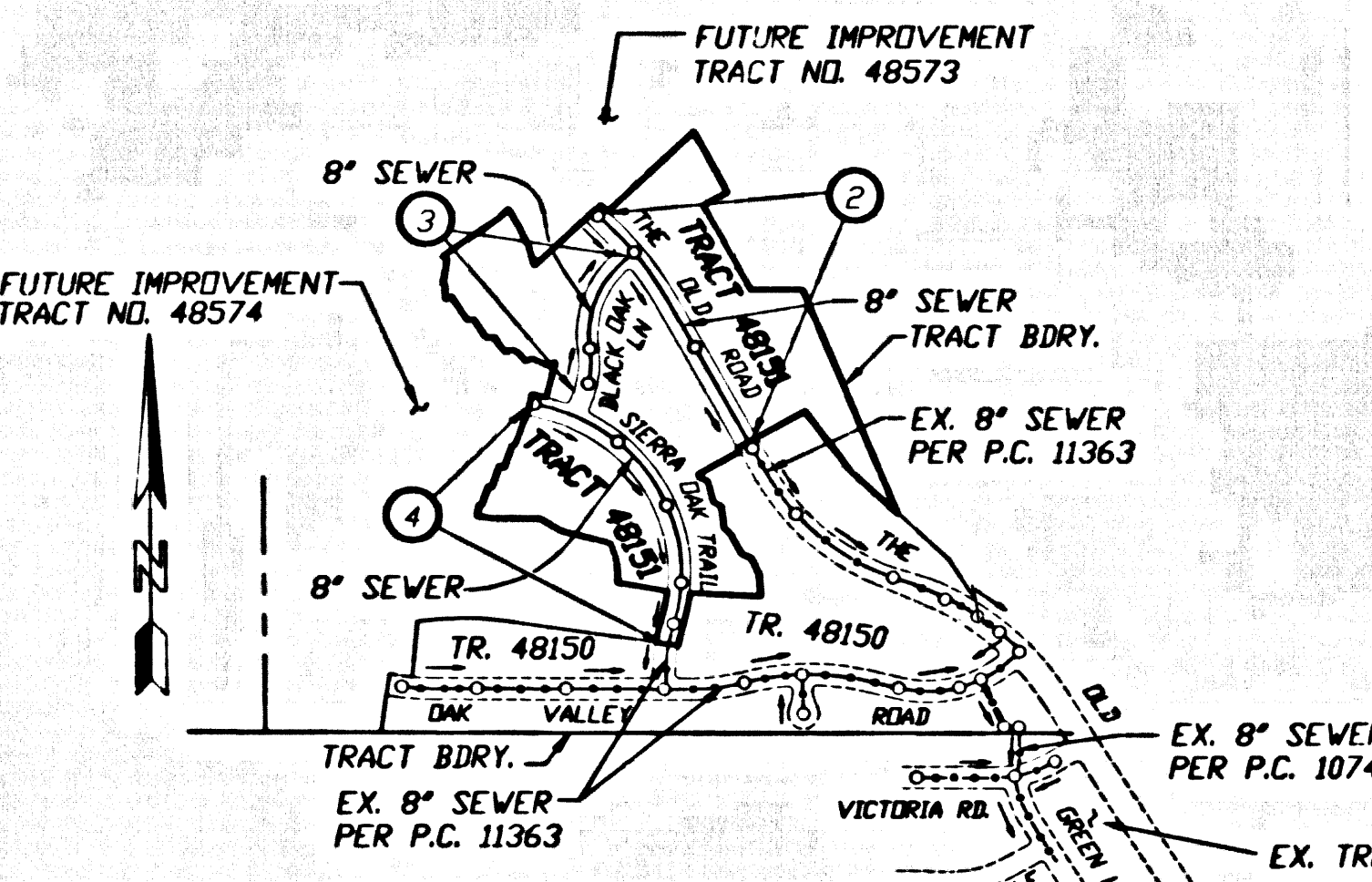
COUNTY OF LOS ANGELES, CALIFORNIA

HARRY W. STONE  
 DIRECTOR OF PUBLIC WORKS

CHARLES W. CARRY  
 CHIEF ENGINEER  
 CO. SAN. DIST. NO. 32

APPROVED: *[Signature]* 11/25/99 (DATE)  
 CHECKED: *[Signature]* 11/25/99 (DATE)  
 REG. C.E. NO. 45641 (DATE)

SANTA CLARITA VALLEY BLDG. DIST. 8.2

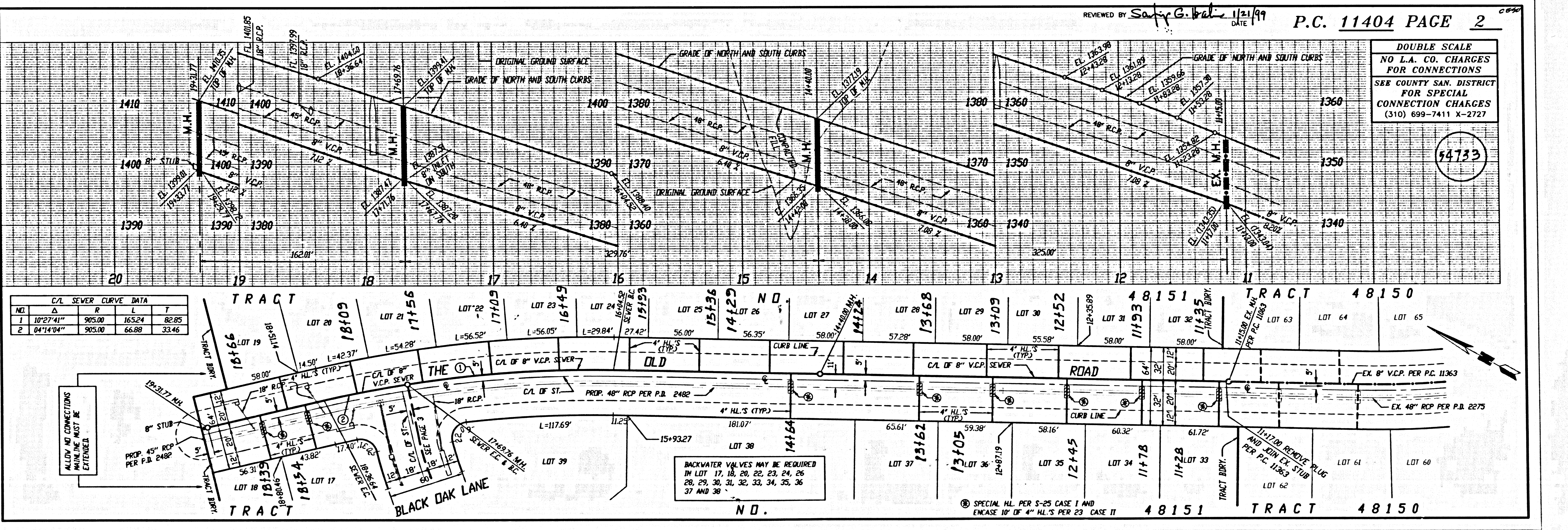


1174  
 INDEX MAP  
 SCALE 1" = 800'  
 P.C. 11404 TRACT NO. 48151  
 THOMAS GUIDE PAGE 43697E-5  
 NOTE: NUMBERS IN CIRCLES INDICATE PAGE NUMBERS

ALLOW NO H.L. CONNECTION PERMITS UNTIL  
 OUTLET SEWER P.C. 11363 IS ACCEPTED BY  
 LOS ANGELES COUNTY FOR PUBLIC USE

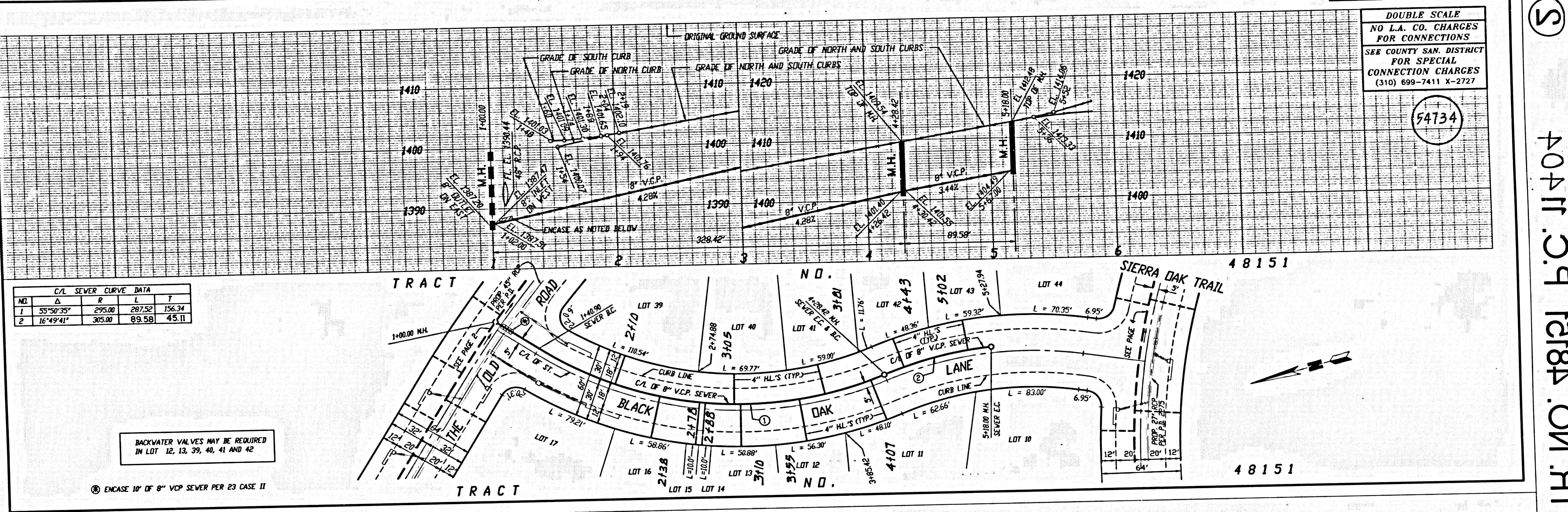
CONSTRUCTION NOTES:  
 1. WORK SHALL BE CONSTRUCTED ACCORDING TO THE STANDARD SPECIFICATIONS FOR PUBLIC WORKS CONSTRUCTION (1995 EDITION) AND A COUNTY DEPARTMENT OF PUBLIC WORKS SPECIAL PROVISIONS FOR THE CONSTRUCTION OF SANITARY SEWERS, LATEST EDITION, AND SHALL BE PROCEEDED ONLY IN THE PRESENCE OF THE DEPARTMENT OF PUBLIC WORKS.  
 2. THE CONTRACTOR SHALL NOTIFY THE CONSTRUCTION DIVISION BY TELEPHONE, 621-408-3726, AT LEAST 48 HOURS BEFORE STARTING ANY WORK UNDER THIS CONTRACT.  
 3. HOUSE LATERALS TO BE CONSTRUCTED WITH INVERTS AT PROPERTY LINE 4 FEET BELOW CURB GRADE EXCEPT AS NOTED.  
 4. 8" OR 12" BRANCHES MAY BE USED FOR CONNECTIONS TO MANHOLE SEWERS EXCEPT AS NOTED.  
 5. ALL STRUCTURES SHALL BE EITHER BRICK MANHOLES PER A.P.S.A. STD. PLAN NO. 203-0 OR PRECAST CONCRETE MANHOLES PER L.A.C.P.D. STD. PLAN NO. 200-0 EXCEPT AS NOTED.  
 6. PROTECT STAKES ON THE PROPERTY LINE PRODUCED AT RIGHT ANGLES TO THE SEWER LINE AT THE CENTER LINE OF EACH MANHOLE.  
 7. MANHOLE PIPE IN UNIMPROVED RIGHTS OF WAY TO BE SIX INCHES ABOVE FINISHED GRADE.  
 8. WITHEED CLAY PIPE JOINTS SHALL BE TYPE "D" OR "E" PER STANDARD SPECIFICATIONS SECTION 208-2.  
 9. IF A POWER POLE IS WITHIN THREE FEET OF THE SEWER, THE SEWER SHALL BE ENCASED PER L.A.C.P.D. STD. PLAN NO. 203-0. IF A POWER POLE IS WITHIN TWO FEET OR LESS FROM THE POINT OF INTERFERENCE, THE SEWER SHALL BE ENCASED PER L.A.C.P.D. STD. PLAN NO. 203-0, CASE 8 UNLESS OTHERWISE APPROVED BY THE DIRECTOR OF PUBLIC WORKS.  
 10. ALL JOINTS BETWEEN CAST IRON PIPE AND WITHEED CLAY PIPE SHALL BE MADE WITH A RUBBER SLEEVE JOINT, TYPE "C" OR "D" (WITH RUBBER IF NECESSARY) PER STANDARD SPECIFICATIONS SECTION 208-2.  
 11. SEWERS TO BE TESTED FOR LEAKAGE PER SECTION 308-1.4 OF THE STANDARD SPECIFICATIONS AND SPECIAL PROVISIONS.  
 12. RESURFACE ALL TRENCHES WITHIN PAVED AREAS TO MEET LOS ANGELES COUNTY PUBLIC WORKS OR CALIFORNIA STATE MINIMUM REQUIREMENTS IN ACCORDANCE WITH STANDARD SPECIFICATIONS.  
 13. FULL COMPLIANCE WITH SECTION 308-1.34 OF THE STANDARD SPECIFICATIONS WILL BE REQUIRED FOR BACKFILL IN ALL EXCAVATIONS IN ACCORDANCE WITH STANDARD SPECIFICATIONS.  
 14. SPECIAL BACKFILL IN EASEMENT CONSTRUCTION: (A) BACKFILL WITHIN AND REPLACE OTHER EARTH SO AS TO MAINTAIN EXISTING GRADES AND PROTECT EXISTING UTILITIES FROM DAMAGE. (B) BACKFILL SHALL BE COMPACTED TO A MINIMUM OF 95% RELATIVE COMPACTION BY THE METHOD OF TEST OR BY 10% MOISTURE ACCEPTANCE. CERTIFICATION OF SUCH COMPACTION SHALL BE SUBMITTED TO THE CONSTRUCTION DIVISION, PUBLIC WORKS DEPARTMENT.  
 15. ALL VES AND/OR HOUSE LATERALS ARE TO BE LOCATED AT LEAST FIVE FEET APART AND NOT CLOSER THAN FIVE FEET TO ANY MANHOLE.

LEGEND  
 2000-0  
 2003-0  
 2011-0  
 2019-0  
 2021-0  
 2024-0  
 2024-0  
 2027-0  
 2010-0  
 2001-0  
 2010-0  
 145-25  
 2020-0  
 221-0



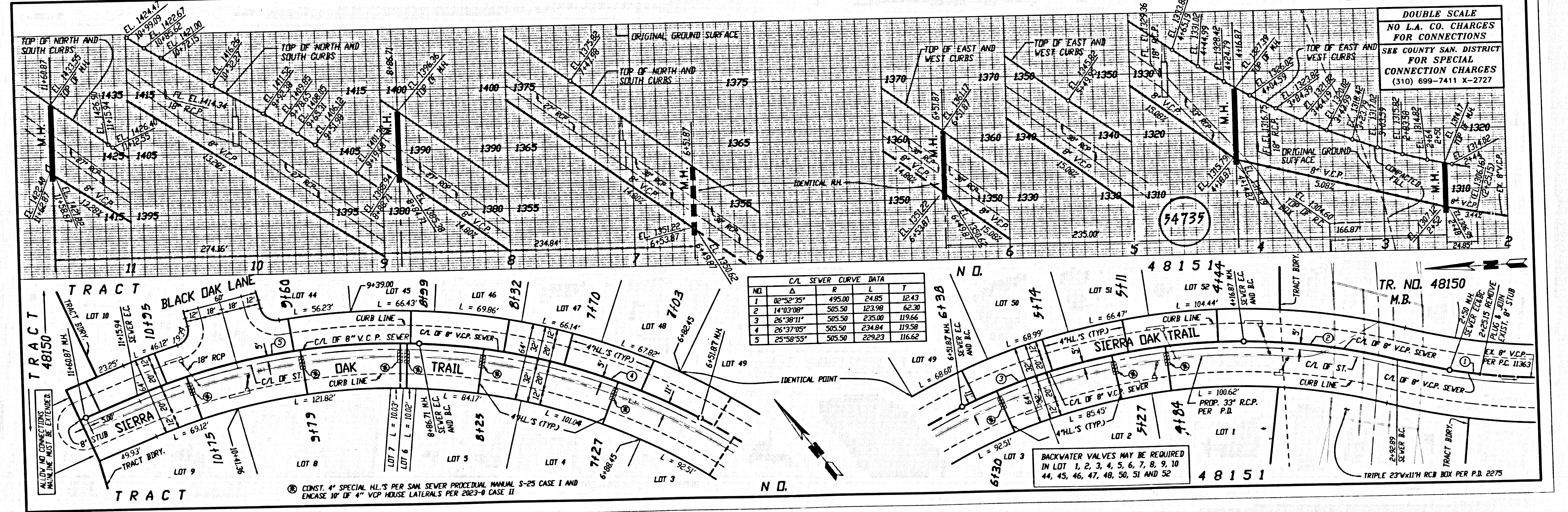
DOUBLE SCALE  
NO L.A. CO. CHARGES  
FOR CONNECTIONS  
SEE COUNTY SAN. DISTRICT  
FOR SPECIAL  
CONNECTION CHARGES  
(310) 699-7411 X-2727

54734



DOUBLE SCALE  
NO L.A. CO. CHARGES  
FOR CONNECTIONS  
SEE COUNTY SAN. DISTRICT  
FOR SPECIAL  
CONNECTION CHARGES  
(310) 699-7411 X-2727

54735



404 FT. C.P. 12184.0M. FT