

BENCH MARK: L 5292 ELEV. 1342.692  
 DPW BM TAG IN N CB 5FT E/O BCR @ NE COR  
 SECO CYN RD & COPPER HILL DR 70FT E & 32FT  
 N/O CL INT (W END C B)

NEWHAUS QUAD, 1993  
 BEFORE BREAKING INTO OR CONSTRUCTION ON A COUNTY SANITATION  
 DISTRICT SEWER AND PRIOR TO FINAL ACCEPTANCE OF THE PROJECT,  
 A SANITATION DISTRICT INSPECTOR SHALL BE NOTIFIED BY PHONE  
 AT (805) 266-4633 SO THAT REQUIRED INSPECTIONS CAN BE MADE.

**PRIVATE ENGINEERS NOTICE TO CONTRACTORS:**  
 THE EXISTENCE AND LOCATION OF ANY UNDERGROUND UTILITY PIPES OR STRUCTURES SHOWN ON THESE  
 PLANS IS OBTAINED BY A SEARCH OF AVAILABLE RECORDS TO THE BEST OF OUR KNOWLEDGE. THERE  
 ARE NO EXISTING UTILITIES EXCEPT AS SHOWN ON THIS MAP. THE CONTRACTOR IS REQUIRED TO  
 TAKE PRECAUTIONARY MEASURES TO PROTECT THE UTILITY LINES SHOWN AND ANY OTHER LINES NOT  
 OF RECORD OR NOT SHOWN ON THIS DRAWING. PRIOR TO EXCAVATION THE CONTRACTOR SHALL CALL  
 TOLL FREE 1-800-422-4139 TO VERIFY THE UNDERGROUND LOCATION OF GAS AND TELEPHONE LINES.  
 THE CONTRACTOR SHALL ALSO CALL MR. RAY CUMMINGS OF GENERAL TELEPHONE COMPANY AT  
 1-805-840-4871 SO THAT THEY CAN MARK THE LOCATION OF UNDERGROUND TELEPHONE LINES.

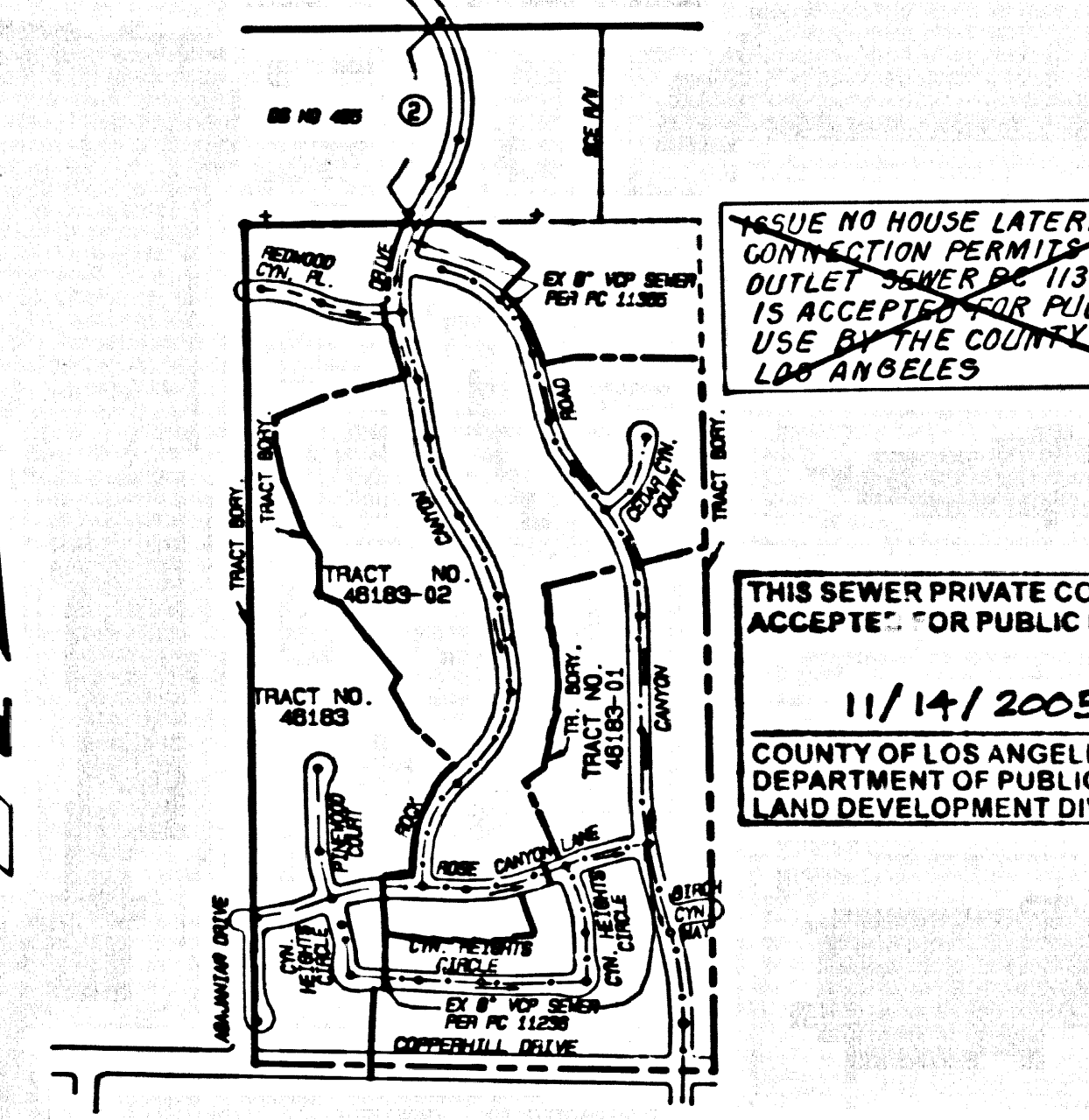
*Richard S. Sisk*  
 REGISTERED CIVIL ENGINEER NO. 19220 EXP. 09-30-01 DATE 1-15-99

**NPDES NOTES**  
 BEST MANAGEMENT PRACTICES FOR CONSTRUCTION ACTIVITIES  
 Erosion sediments and other pollutants must be retained on site and may not  
 be transported from the site via sheetflow, rillflow, area drainage, natural  
 drainage courses or wind.  
 Sediment of earth and other construction related materials must be protected  
 from being transported from the site by wind or water.  
 Fuels, oils, solvents and other toxic materials must be stored in  
 accordance with local, state and federal regulations. All approved storage containers are to be protected  
 from the weather. Spills must be cleaned up immediately and disposed  
 of in a proper manner. Spills may not be washed into the drainage system.  
 Excess or waste concrete may not be washed into the public way or any other  
 drainage system. Provisions shall be made to retain concrete wash on  
 site until they can be disposed of as solid waste.  
 Trunk and construction related waste must be deposited into a covered  
 receptacle to prevent contamination of personnel and disposal by wind.  
 Sediments and other materials may not be tracked from the site by vehicle  
 traffic. The construction entrance roadway must be stabilized so as to  
 inhibit sediments from being deposited into the public way. Accidental  
 spills must be cleaned up immediately and may not be washed down by  
 rain or other means.  
 Any slopes with disturbed soils or demands of vegetation must be stabilized  
 so as to inhibit erosion by wind and water.

**STORMWATER POLLUTION CONTROL REQUIREMENTS  
 FOR SEWER CONSTRUCTION**  
 THE FOLLOWING BMP'S PER THE "BEST MANAGEMENT PRACTICE HANDBOOK"  
 CALIFORNIA STORMWATER QUALITY TASK FORCE, SACRAMENTO, CALIFORNIA, 1993,  
 OR THE LATEST EDITION, MAY APPLY DURING CONSTRUCTION:

CA001 - DEMATERING OPERATIONS	CA030 - VEHICLE AND EQUIPMENT MAINTENANCE
CA002 - PAVING OPERATIONS	ES001 - SCHEDULING
CA003 - STRUCTURE CONSTRUCTION AND PAINTING	ES002 - PRESERVATION OF EXISTING VEGETATION
CA004 - MATERIALS DELIVERY AND STORAGE	ES003 - SEEDING AND PLANTING
CA005 - SOLID WASTE MANAGEMENT	ES011 - MACHINING
CA006 - HAZARDOUS WASTE MANAGEMENT	ES020 - GEOTEXTILES AND MATS
CA007 - CONCRETE WASTE MANAGEMENT	ES021 - DUST CONTROL
CA008 - HAZARDOUS WASTE MANAGEMENT	ES022 - TEMPORARY STREAM CROSSING
CA009 - VEHICLE AND EQUIPMENT CLEANING	ES023 - CONSTRUCTION ROAD STABILIZATION
CA010 - VEHICLE AND EQUIPMENT FUELING	ES024 - STABILIZED CONSTRUCTION ENTRANCE
	ES024 - STORM DRAIN INLET PROTECTION

NO CONNECTION FOR THE DISPOSAL OF INDUSTRIAL WASTES SHALL BE MADE TO SEWERS  
 SHOWN ON THESE DRAWINGS UNTIL A PERMIT FOR INDUSTRIAL WASTEWATER DISCHARGE HAS  
 BEEN ISSUED BY THE SANITATION DISTRICTS FOR SAID CONNECTIONS.



**INDEX MAP**  
 SCALE: 1" = 600'  
 P.C. 11405 D.S. NO. 495  
 THOMAS GUIDE P.O. NO. 4481-84  
 NOTE: NUMBERS IN CIRCLES INDICATE PAGE NUMBERS

**GENERAL NOTES:**

- ALL RECORDS SHALL BE OBTAINED AND A FEE PAID FOR CONSTRUCTION INSPECTION AND RECORD PLANS TO THE  
 DEPARTMENT OF PUBLIC WORKS OF THE COUNTY OF LOS ANGELES, 12630 BLUEBANK BLVD., SANTA CLARITA, CA 91380. AT LEAST 72 HOURS  
 BEFORE THE COMMENCEMENT OF CONSTRUCTION. OTHER RELEVANT RECORDS, PERMITS, ETC. MUST BE FILED WITH THE PERMIT APPLICATION.
- IF WORK IS TO BE DONE IN A STATE HIGHWAY, A PERMIT MUST BE OBTAINED FROM THE STATE OF CALIFORNIA DIVISION OF  
 HIGHWAYS, 1200 SOUTH BRIDGES STREET, LOS ANGELES, CALIFORNIA.
- THE CONTRACTOR MUST CONTACT THE DIRECTOR OF PUBLIC WORKS TO DETERMINE THE LOCATION TO PAY THE INSPECTION FEE.
- THE CONTRACTOR SHALL CONTACT THE DISTRICT OFFICE OF THE COUNTY OF LOS ANGELES DEPARTMENT OF PUBLIC WORKS TO OBTAIN  
 AT LEAST 72 HOURS BEFORE STARTING AND SIGN UNDER THE CONTRACTOR'S DIVISION OF TELEPHONE LINES (BOOKING) AND  
 APPROVAL OF THIS PLAN BY THE CITY OF SANTA CLARITA DOES NOT CONSTITUTE A REPRESENTATION AS TO ACCURACY OF THE  
 LOCATION OR THE EXISTENCE OR NON-EXISTENCE OF ANY UNDERGROUND UTILITY PIPE OR STRUCTURE WITHIN THE LIMITS OF  
 THIS PROJECT. THIS NOTE APPLIED TO ALL PAGES.
- ALL WORK SHALL BE IN ACCORDANCE WITH THE "STANDARD SPECIFICATIONS FOR PUBLIC WORKS CONSTRUCTION" 1988 EDITION,  
 INCLUDING SUPPLEMENTS AND THE SPECIAL PROVISIONS FOR THE CONSTRUCTION OF SANITARY SEWERS, DATED JULY 21, 1988,  
 AND SHALL BE PROCEEDED ONLY IN THE PRESENCE OF THE DEPARTMENT OF PUBLIC WORKS PERSONNEL.
- THE CONTRACTOR'S ATTENTION IS DRAWN TO SECTION 71-1.4.1.1 OF THE STANDARD SPECIFICATIONS FOR PUBLIC WORKS CONSTRUCTION AS SHOWN  
 ON LOS ANGELES DEPARTMENT OF PUBLIC WORKS' STANDARD S-2.
- ALL VESSELS SHALL BE IN FEET ABOVE U.S.C. & G.S. SEA LEVEL DATUM OF 1988.
- NO REVISIONS SHALL BE MADE IN THESE PLANS WITHOUT THE APPROVAL OF THE DIRECTOR OF PUBLIC WORKS.
- NO REPRESENTATIVE OF THE DEPARTMENT OF PUBLIC WORKS WILL SURVEY OR LAY OUT ANY PORTION OF THE WORK.
- SHOULDER TO MATCH THIS IMPROVEMENT IS TO BE CONSTRUCTED AS SHOWN ON PLANS AND PROFILES. GRADE POINTS FOR TOP OF CURBS,  
 CENTERLINE OF STREETS, OR CENTERLINE OF ALLEYS, ARE SHOWN BY CIRCLES ON PROFILES AT ALL POINTS BETWEEN DESIGNATED  
 POINTS THE GRADE POINTS ARE SHOWN AS TO CORRESPOND TO A STATIONARY LINE DRAWN BETWEEN SAID DESIGNATED POINTS.
- THE PRIVATE ENGINEER SHALL FURNISH THE DEPARTMENT OF PUBLIC WORKS WITH GRADE SHEETS AND STATIONS FOR ALL HOUSE  
 LATERALS AND HOUSE LATERALS SHALL BE CONSTRUCTED WITH A STRAIGHT ALIGNMENT AT RIGHT ANGLES FROM THE MAIN LINE SEWER  
 UNLESS SHOWN OTHERWISE. HOUSE LATERALS SHALL HAVE AN ANGLE OF LEAST 90 DEGREES WITH THE MAIN LINE SEWER. ANY  
 CHANGE IN ALIGNMENT SHALL BE REQUESTED IN WRITING BY THE PRIVATE ENGINEER BEFORE THE HOUSE LATERAL ON THE GRADE SHEET.
- THE PRIVATE ENGINEER SHALL FURNISH THE HOUSE LATERAL DEPTH AT THE PROPERTY LINE BELOW THE TOP CURB ELEVATION FOR  
 EACH HOUSE LATERAL ON THE GRADE SHEET.
- THE ENGINEER SHALL REVISE THIS PLAN TO SHOW THE AS-BUILT LOCATION OF HOUSE LATERALS BEFORE THE  
 SEWER IS ACCEPTED FOR PUBLIC USE AND THE SEWER SECURITY CAN BE RELEASED.

**CONSTRUCTION NOTES:**

- ALL VESSELS BETWEEN CLAY PIPE JOINTS SHALL BE TYPE "D" OR "E" PER STANDARD SPECIFICATIONS SECTION 800-5.
- ALL VESSELS BETWEEN CLAY PIPE JOINTS SHALL BE MADE WITH A RUBBER GASKET JOINT, TYPE "D"  
 OR "E" PER STANDARD SPECIFICATIONS SECTION 800-5.
- HOUSE LATERALS SHALL BE CONSTRUCTED WITH SHORTS AT PROPERTY LINE 8 FEET BELOW CURB GRADE EXCEPT AS NOTED.
- PIPE ON THE BRANCHES MAY BE USED FOR CONNECTIONS TO MAINLINE SEWERS EXCEPT AS NOTED.
- IF DURING THE COURSE OF CONSTRUCTION IT IS DETERMINED THAT THERE IS LESS THAN FOUR FEET OF COVER OVER THE TOP OF  
 MAINLINE OR HOUSE LATERAL, THE SEWER WHICH IS NOT INDICATED ON THE PLANS, THE PIPE SHALL BE EXCAVED PER  
 STANDARD PLAN S-200. IF REINFORCED PRECAST CONCRETE MAINLINE STANDARD PLAN S-200 IS NOTED.
- ALL STRUCTURES SHALL BE EITHER BRICK, SEWER MANHOLES PER STANDARD PLAN S-3, OR PRECAST CONCRETE SEWER MANHOLES PER  
 STANDARD PLAN S-300. IF REINFORCED PRECAST CONCRETE MAINLINE STANDARD PLAN S-200 IS NOTED.
- REPAIRS TO ALL STRUCTURES WITHIN PAVED AREAS TO MEET CITY OF SANTA CLARITA PUBLIC WORKS OR CALIFORNIA STATE HIGHWAY  
 REQUIREMENTS IN ACCORDANCE WITH THE PERMITS.
- ALL MANHOLE AND PILE OUTLETS OF STREET RIGHT OF WAY SHALL BE COMPACTED TO 80% OF MAXIMUM DENSITY AS DETERMINED  
 BY STANDARD TEST METHOD T-99. THIS COMPACTED AREA SHALL BE MAINTAINED THROUGHOUT CONSTRUCTION AND SHALL BE  
 MAINTAINED PRIOR TO THE SUBMITTAL OF A CERTIFICATE OF ACCEPTANCE.
- MANHOLE TOPS IN UNPAVED AREAS OF WAY TO BE LEVEL WITH FINISHED GRADE.
- SEWERS TO BE TESTED FOR LEAKAGE PER SECTION 800-1.4 OF THE STANDARD SPECIFICATION AND SPECIAL PROVISIONS.
- ALL VESSELS AND/OR HOUSE LATERALS ARE TO BE LOCATED AT LEAST FIVE FEET APART AND WHEN POSSIBLE NOT CLOSER  
 THAN FIVE FEET TO ANY MANHOLE.

PROFILE, ALIGNMENT AND GRADE OF  
**SANITARY SEWERS**  
 TO BE CONSTRUCTED IN  
 D.S. No. 495  
 PRIVATE CONTRACT NO. 11405  
 INDEX 1332  
 1 SHEET OF 2 PAGES

SCALE: VERT. 1" = 8'  
 HORIZ. 1" = 40' OCT, 1997

PREPARED IN THE OFFICES OF  
 SISK AND ENGINEERING  
 12630 BLUEBANK BLVD., VAN NUYS, CA 91411-3508  
 TEL: (818) 787-8550

BY: *Richard S. Sisk*  
 REG. C.E. No. 19220

THE FOLLOWING LATEST REVISED STANDARD PLANS ON FILE IN THE OFFICE OF THE DEPARTMENT OF  
 PUBLIC WORKS SHALL APPLY IN THE CONSTRUCTION OF THIS PROJECT:

LEGEND.....	S-1
MINIMUM PUBLIC SAFETY REQUIREMENTS.....	S-2
STANDARD MANHOLE STEP.....	S-3
STANDARD MANHOLE STEP.....	S-4
SECTIONS FOR SEWER PIPE.....	S-5
QUALITY AND ENDUREMENT.....	S-6
PIPE ON THE SUPPORT.....	S-7
ALLOWABLE TRENCH WIDTHS.....	S-8
LOADING MANHOLE FRAME AND COVER.....	S-9
NON-REINFORCED PRECAST CONCRETE MANHOLE.....	S-10

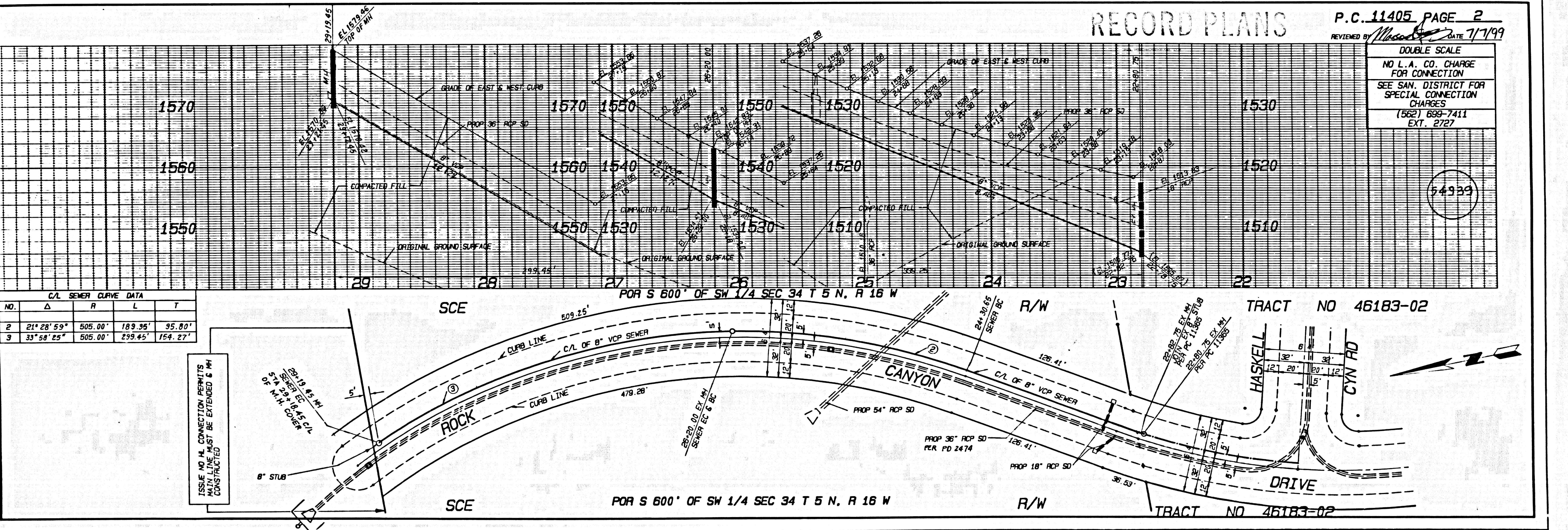
COUNTY OF LOS ANGELES, CALIFORNIA  
 HARRY M. STONE  
 DIRECTOR OF PUBLIC WORKS

CHARLES W. CARR  
 CHIEF ENGINEER  
 CO. SAN. DIST. NO. 20

APPROVED: *Richard S. Sisk* 7-8-99 (DATE)  
 OFFICE ENGINEER

DECEDED: *Phil D. ...* 7-8-99 (DATE)

BUILDING DIST. 8.2 SANTA CLARITA



U.S. GOVERNMENT PRINTING OFFICE: 1984 O-1213000-9440

1  
 70411 .09 489 P.0 2.0

DOUBLE SCALE  
 NO L.A. CO. CHARGE  
 FOR CONNECTION  
 SEE SAN. DISTRICT FOR  
 SPECIAL CONNECTION  
 CHARGES  
 (562) 698-7411  
 EXT. 2727

54939

1053-74