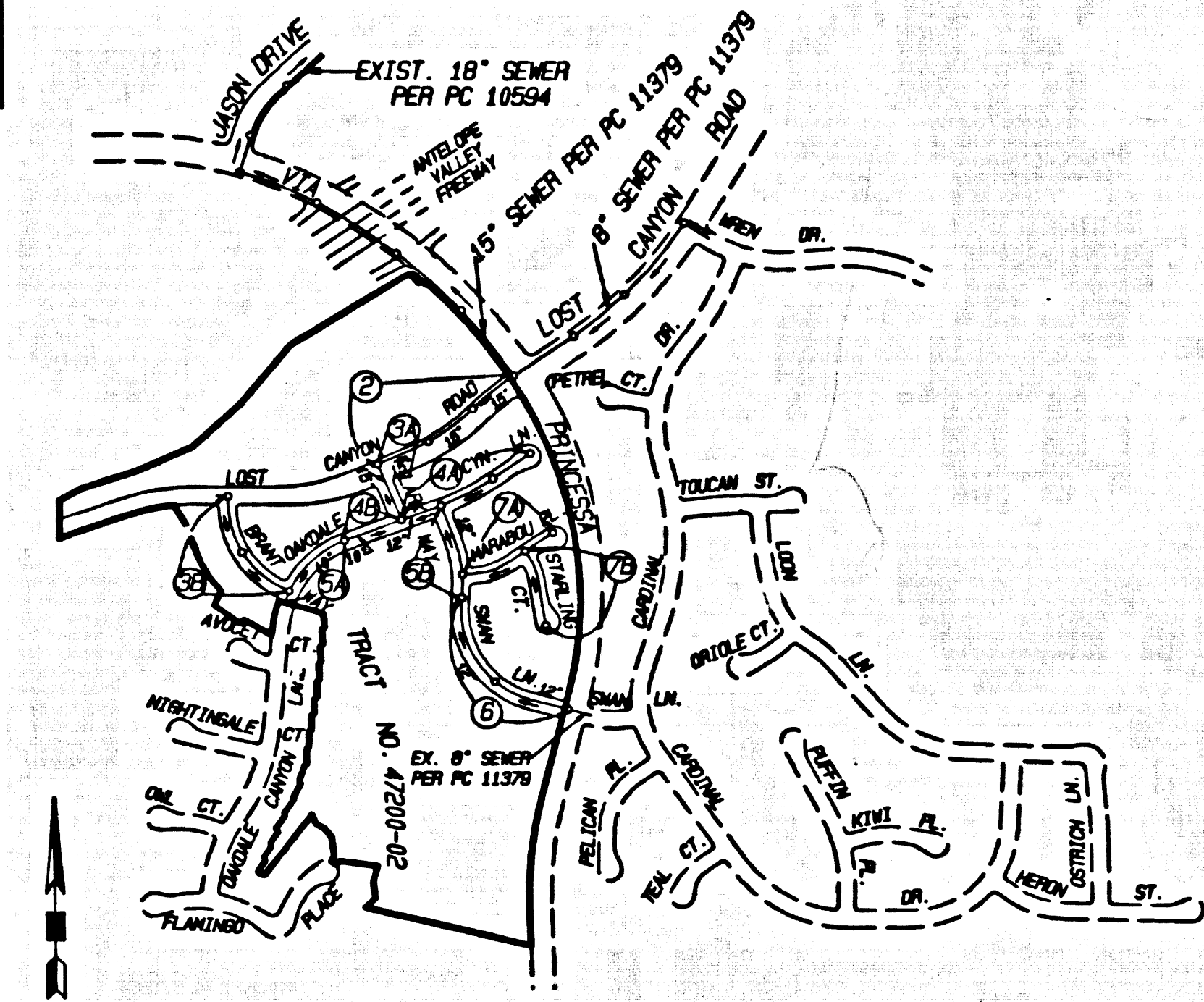


B.M. L 5222 ELEV. 1456.412
DPW BN TAG 1FT NAD BCR @ NE COR SIERRA HWY
& VIA PRINCESSA 82FT N & 42FT E/O C/L INT
NEWHALL QUAD. 19 93



INDEX MAP
SCALE: 1" = 600'
P.C. 11406 TRACT NO. 47200-02
THOMAS SUITE PG. NO. 4511/J-5.6
NOTE: NUMBERS IN CIRCLES INDICATE PAGE NUMBERS

Table with 4 columns: NO., REVISION, REVISED BY, APPROVED BY, DATE. The table is currently empty.

STORMWATER POLLUTION CONTROL REQUIREMENTS FOR SEWER CONSTRUCTION

- 1. Erosion sediments and other pollutants must be retained on site and may not be transported from the site via sheetflow, swales, area drains, natural drainage courses or wind.
2. Reception of earth and other construction related materials must be protected from being transported from the site by the forces of wind or water.
3. Pesticides, oils, solvents and other toxic materials must be stored in accordance with their listing and are not to contaminate the soil and surface waters. All approved storage containers are to be protected from the weather. Spills must be cleaned up immediately and disposed of in a proper manner. Spills may not be washed into the drainage system.
4. Excess or waste concrete may not be washed into the public way or any other drainage system. Provisions shall be made to receive concrete washed on site which may be disposed of as solid waste.
5. Trash and construction related solid wastes must be deposited into a covered receptacle to prevent contamination of personnel and disposal by wind.
6. Sediment and other materials may not be washed from the site by vehicle traffic. The construction entrance roadway must be established so as to inhibit sediments from being deposited into the public way. Accidental spillages must be swept up immediately and may not be washed down by rain or other means.
7. Any slopes with disturbed soils or denuded of vegetation must be stabilized as to be invisible to wind and water.

NO CONNECTION FOR THE DISPOSAL OF INDUSTRIAL WASTES SHALL BE MADE TO SEWERS SHOWN ON THESE DRAWINGS UNLESS A PERMIT FOR INDUSTRIAL WASTEWATER DISCHARGE HAS BEEN ISSUED BY THE SANITATION DISTRICTS FOR SAID CONNECTION

BEFORE BREAKING INTO OR CONSTRUCTION ON A COUNTY SANITATION DISTRICT SEWER AND PRIOR TO FINAL ACCEPTANCE OF THE PROJECT, A SANITATION DISTRICT INSPECTOR SHALL BE NOTIFIED BY PHONE AT (805) 296-6063 SO THAT REGULAR INSPECTIONS CAN BE MADE.

- CAN1 - DEMOLITION OPERATIONS
CAN2 - PRIVATE OPERATIONS
CAN3 - STRUCTURE CONSTRUCTION AND PAINTING
CAN4 - MATERIAL STORAGE AND STORAGE
CAN5 - SOLID WASTE MANAGEMENT
CAN6 - HAZARDOUS WASTE MANAGEMENT
CAN7 - CONCRETE WASTE MANAGEMENT
CAN8 - SANITARY WASTE MANAGEMENT
CAN9 - VEHICLE AND EQUIPMENT CLEANING
CAN10 - VEHICLE AND EQUIPMENT MAINTENANCE
CAN11 - SCHEDULED MAINTENANCE
CAN12 - PRESERVATION OF EXISTING VEGETATION
ESC1 - SEEDING AND PLANTING
ESC2 - MULCHING
ESC3 - GEOTEXTILES AND MATS
ESC4 - SOIL CONTROLS
ESC5 - TEMPORARY STREAM CROSSING
ESC6 - CONSTRUCTION ROAD STABILIZATION
ESC7 - STABILIZED CONSTRUCTION ENTRANCE
ESC8 - STORM DRAIN INLET PROTECTION

STANDARD PLANS: THE FOLLOWING LATEST REVISED STANDARD PLANS ON FILE IN THE OFFICE OF THE FOLLOWING APPLY IN THE CONSTRUCTION OF THIS PROJECT.

- APMA 208-8 BREAKING INTO EXISTING MANHOLES
APMA 222-8 HOUSE CONNECTION REPAIRING
APMA 225-1 HOUSE CONNECTION REPAIRING
APMA 225-1 BLANKET PROTECTION FOR PIPES
LEND FOR SANITARY SEWER PLANS AND PROFILES AND DISTRICT MAPS.
2000-8 REPAIRING FOR SEWER PIPE
2004-8 LIVE OR TREE SUPPORT
2005-8 ALLOWANCE TRENCH WIDTHS
2006-8 MINIMUM PUBLIC SAFETY REQUIREMENTS
2015-8 STANDARD MANHOLE
2020-8 MANHOLE AND GROUND SURFACE REQUIREMENTS FOR SAN. SEWERS NEAR WATER MAINS

ISSUE NO H.L. CONNECTION PERMITS UNTIL OUTLET SEWER P.C. NO. 11379 IS ACCEPTED FOR PUBLIC USE BY LOS ANGELES COUNTY

LOTS 79 THRU 81 ARE RESTRICTED TO NO CONSTRUCTION OF RESIDENTIAL BUILDINGS AND WILL NOT BE SERVED BY THIS SEWER

PRIVATE CONTRACT SEWER GENERAL NOTES

- 1. A SEWER CONSTRUCTION PERMIT SHALL BE OBTAINED AND A FEE PAID FOR CONSTRUCTION INSPECTION AND RECORD PLANS TO THE DEPARTMENT OF PUBLIC WORKS AT THE PERMIT COUNTY, 900 SOUTH PROMONT AVENUE, 8TH FLOOR, ALHAMBRA, AT LEAST 10 BUSINESS DAYS PRIOR TO STARTING WORK UNDER THIS CONTRACT. COPIES OF ALL OTHER REQUIRED PERMITS, SUCH AS ROAD EXCAVATION, CALTRANS ETC. MUST BE FILED WITH THE PERMIT APPLICATION.
2. PRIOR TO ISSUANCE OF ANY PERMIT THE CONTRACTOR SHALL FILE A PERMIT FOR EXCAVATIONS AND TRENCHES FROM THE STATE OF CALIFORNIA DIVISION OF INDUSTRIAL SAFETY AND A CERTIFICATE OF WORKERS COMPENSATION INSURANCE WITH THE DEPARTMENT OF PUBLIC WORKS NAMED AS THE CERTIFICATE HOLDER TO BE NOTIFIED 30 DAYS PRIOR TO CANCELLATION OF POLICY.
3. IF WORK IS TO BE DONE IN A STATE HIGHWAY, A PERMIT MUST BE OBTAINED FROM THE STATE OF CALIFORNIA DIVISION OF HIGHWAY, 120 SOUTH SPRING STREET, LOS ANGELES, CALIFORNIA.
4. WHEN WORK IS WITHIN A CONTRACT CITY, THE CONTRACTOR MUST CONTACT THE DIRECTOR OF PUBLIC WORKS OF THAT CITY TO DETERMINE THE LOCATION TO PAY THE INSPECTION FEE.
5. THE CONTRACTOR SHALL CONTACT THE DISTRICT OFFICE LISTED ON THE APPLICATION FOR CONSTRUCTION PERMIT TO APPROVE FOR APPROVAL OF THIS PLAN BY THE COUNTY OF LOS ANGELES DOES NOT CONSTITUTE A REPRESENTATION AS TO ACCURACY OF THE LOCATION OF THE EXISTENCE OR NON-EXISTENCE OF ANY UNDERGROUND UTILITY PIPE OR STRUCTURE WITHIN THE LIMITS OF THIS PROJECT. THIS NOTE APPLIES TO ALL PAGES.
6. APPROVAL OF THIS PLAN BY THE COUNTY OF LOS ANGELES DOES NOT CONSTITUTE A REPRESENTATION AS TO ACCURACY OF THE LOCATION OF THE EXISTENCE OR NON-EXISTENCE OF ANY UNDERGROUND UTILITY PIPE OR STRUCTURE WITHIN THE LIMITS OF THIS PROJECT. THIS NOTE APPLIES TO ALL PAGES.
7. ALL WORK SHALL BE IN ACCORDANCE WITH THE STANDARD SPECIFICATIONS FOR PUBLIC WORKS CONSTRUCTION INCLUDING EMPLOYMENT AND THE SPECIAL PROVISIONS WHICH ARE INCORPORATED INTO THE CONTRACT OF SANITARY SEWER AND SHALL BE PROSECUTED ONLY IN THE PRESENCE OF THE DEPARTMENT OF PUBLIC WORKS PERSONNEL.
8. THE CONTRACTOR'S ATTENTION IS DIRECTED TO SECTION 2-11.4.1.1 OF THE STANDARD SPECIFICATIONS FOR PUBLIC WORKS CONSTRUCTION IN REGARD TO SAFETY ORDERS AND SHALL CONFORM TO THE "MINIMUM PUBLIC SAFETY REQUIREMENTS" AS SHOWN ON LOS ANGELES DEPARTMENT OF PUBLIC WORKS STANDARD P-2.
9. ELEVATIONS ARE IN FEET ABOVE U.S.C. & G.S. SEA LEVEL DATUM OF 1888.
10. NO REVISIONS SHALL BE MADE IN THESE PLANS WITHOUT THE APPROVAL OF THE DIRECTOR OF PUBLIC WORKS.
11. NO REPRESENTATIVE OF THE DEPARTMENT OF PUBLIC WORKS WILL SURVEY OR LAY OUT ANY PORTION OF THE WORK.
12. BEFORE TO WHICH THIS EMPLOYMENT IS TO BE CONSTRUCTED SHALL BE PLACED AND PROPERLY MARKED POINTS FOR TOP OF CURBS, CENTER LINE OF STREETS, OR CENTER LINE OF ALLEYS AND SHOWN BY CIRCLES ON PROFILES AT ALL POINTS BETWEEN DESIGNATED POINTS THE GRADE SHALL BE ESTABLISHED AS TO CONFORM TO A STRAIGHT LINE BETWEEN SAID DESIGNATED POINTS.
13. THE PRIVATE ENGINEER SHALL FURNISH THE DEPARTMENT OF PUBLIC WORKS WITH GRADE SHEETS AND STATIONING FOR ALL HOUSE LATERALS AND "T" JOINT BRANCHES AND SHALL PROVIDE STAKES FOR THEM AT THEIR PROPER LOCATIONS WITH STATIONING PLAINLY MARKED. HOUSE LATERALS SHALL BE CONSTRUCTED AT A STRAIGHT ALIGNMENT AT RIGHT ANGLES FROM THE MAIN LINE SEWER EXCEPT AS OTHERWISE SPECIFIED. ALL CHANGES IN ALIGNMENT SHALL BE REQUESTED BY WRITING BY THE PRIVATE ENGINEER.
14. THE PRIVATE ENGINEER SHALL FURNISH THE HOUSE LATERAL DEPTH AT THE PROPERTY LINE BELOW THE TOP CURB ELEVATION FOR EACH HOUSE LATERAL ON THE GRADE SHEET.

CONSTRUCTION NOTES

- 1. PROFILE SURVEY STATIONS ON THE PROPERTY LINE OR PROPERTY LINES PRODUCED AT RIGHT ANGLES TO THE SEWER LINE AT THE CENTERLINE OF EACH MANHOLE.
2. VITRIFIED CLAY PIPE JOINTS SHALL BE TYPE "D" OR "B" PER STANDARD SPECIFICATIONS SECTION 808-2.
3. IF A POWER POLE IS WITHIN THREE FEET OF THE SEWER, THE SEWER SHALL BE ENCASED PER STANDARD PLAN 828-1, CASE II, TWO FEET ON EACH SIDE FROM THE POINT OF INTERFERENCE.
4. ALL JOINTS BETWEEN CAST IRON PIPE AND VITRIFIED CLAY PIPE SHALL BE MADE WITH A RUBBER SLEEVE JOINT, TYPE "D" WITHIN BUILDINGS IF NECESSARY PER STANDARD SPECIFICATIONS SECTION 808-2.
5. HOUSE LATERALS TO BE CONSTRUCTED WITH INVERTS AT PROPERTY LINE & FEET BELOW CURB GRADE EXCEPT AS NOTED.
6. WYE OR TEE BRANCHES MAY BE USED FOR CONNECTIONS TO MAINLINE SEWERS EXCEPT AS NOTED.
7. IF DURING THE COURSE OF CONSTRUCTION, IT IS DETERMINED THAT THERE IS LESS THAN FOUR FEET OF COVER OVER THE TOP OF A MANHOLE OR HOUSE LATERAL WHICH IS NOT INDICATED ON THE PLANS, THE TYPE SHALL BE ENCASED PER STANDARD PLANS 8-28 CASE II, UNLESS OTHERWISE APPROVED BY THE DIRECTOR OF PUBLIC WORKS.
8. ALL STRUCTURES SHALL BE EITHER PRECAST CONCRETE MANHOLES PER STANDARD PLAN 8-9, EXCEPT AS NOTED.
9. REINFORCE ALL TRENCHES WITHIN PAVEMENT AREAS TO MEET LOS ANGELES COUNTY PUBLIC WORKS OR CALIFORNIA STATE HIGHWAY REQUIREMENTS IN ACCORDANCE WITH THE PERMITS.
10. FULL COMPLIANCE WITH SECTION 808-1.8.4 OF THE STANDARD SPECIFICATIONS WILL BE REQUIRED FOR BACKFILL IN STREETS, CERTIFICATION OF BACKFILL CONSTRUCTION AND ROAD EQUIVALENTS BY A QUALIFIED CIVIL ENGINEER SHALL BE PROVIDED BY THE PERMITTEE PRIOR TO THE ISSUANCE OF A CERTIFICATE OF PARTIAL ACCEPTANCE.
11. ALL BACKFILL AND FILLS OUTSIDE OF STREET RIGHT OF WAY SHALL BE UNLESS OTHERWISE SPECIFIED THIS SHALL BE CERTIFIED BY A REGISTERED CIVIL ENGINEER WITH THIS SECTION. THE FILL SHALL BE SUBMITTED TO THE CONSTRUCTION DIVISION OF THE DEPARTMENT OF PUBLIC WORKS PRIOR TO ACCEPTANCE OF THE WORK BY THE COUNTY.
12. MANHOLE TOPS IN IMPROVED AREAS MAY BE LEVEL WITH FINISHED GRADE.
13. SEWERS TO BE TESTED FOR LEAKAGE PER SECTION 808-1.4 OF THE STANDARD SPECIFICATIONS AND SPECIAL PROVISIONS.
14. ALL NEW MANHOLE HOUSE LATERALS ARE TO BE LOCATED AT LEAST FIVE FEET APART AND WHEN POSSIBLE NOT CLOSER THAN FIVE FEET TO ANY MANHOLE.

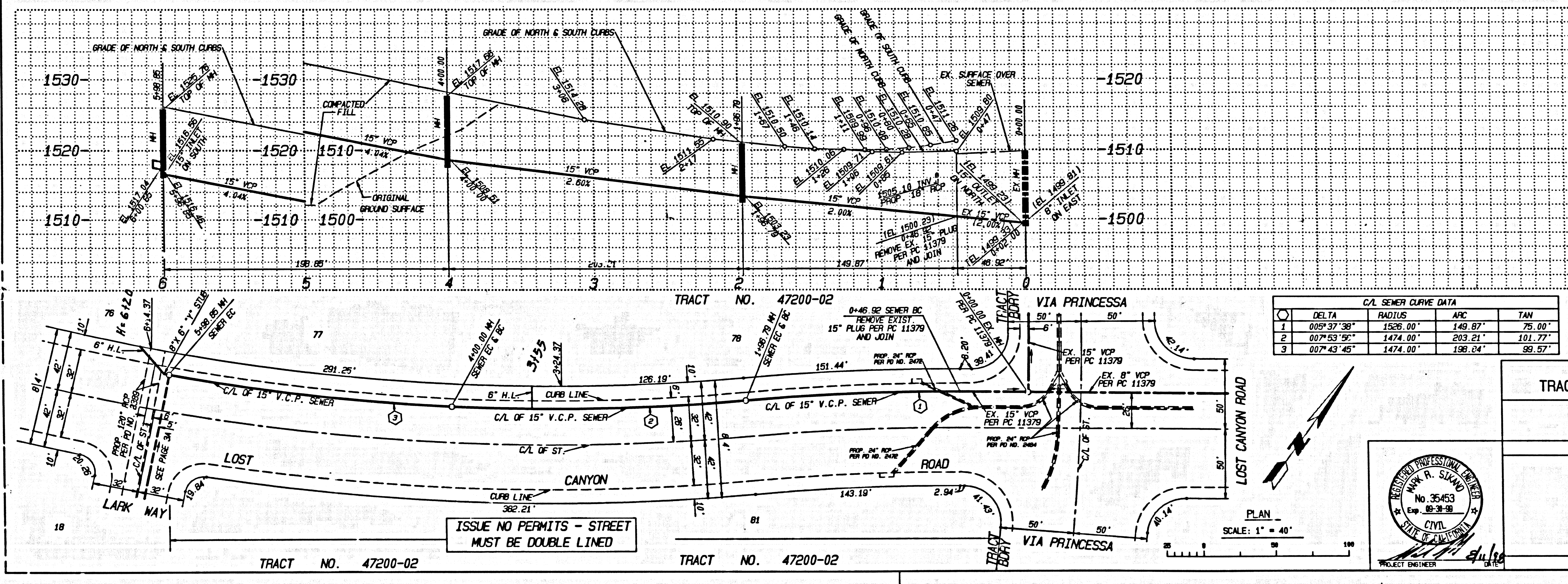
PROFILE, ALIGNMENT AND GRADE OF SANITARY SEWERS

TRACT NO. 47200-02 PC NO. 11406
4 SHEETS: 7 PAGES
COUNTY OF LOS ANGELES CALIFORNIA

APPROVED: BUILDING & SAFETY/LAND DEVELOPMENT DIVISION
By Ronald W. DeLong 8-17-98
SUBMITTED: Phil Anderson 8-17-98

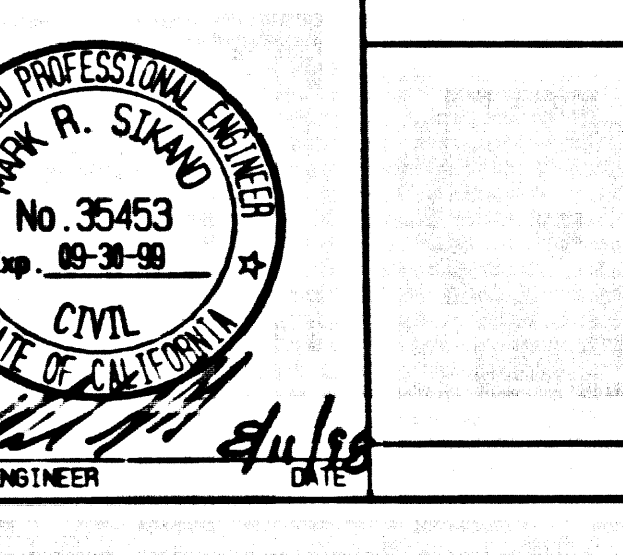
APPROVED: COUNTY SANITATION DISTRICT
OF LOS ANGELES CALIF. CHARLES H. CARR - CHIEF ENGINEER AND GENERAL MANAGER
COUNTY SANITATION DISTRICT NO. 26
By Guzman S. Vega 8-18-98
B.L.D.G. DIST.

PRIVATE ENGINEERS NOTICE TO CONTRACTORS: THE EXISTENCE AND LOCATION OF ANY UNDERGROUND UTILITY PIPES OR STRUCTURES SHOWN ON THESE PLANS IS REQUIRED BY A SEARCH OF AVAILABLE RECORDS TO THE BEST OF OUR KNOWLEDGE. THERE ARE NO EXISTING UTILITIES EXCEPT AS SHOWN ON THIS MAP. THE CONTRACTOR IS REQUIRED TO TAKE PRECAUTIONARY MEASURES TO PROTECT THE UTILITY LINES SHOWN AND ANY OTHER LINES NOT OF RECORD OR NOT SHOWN ON THIS DRAWING. PRIOR TO EXCAVATION THE CONTRACTOR SHALL CALL TOLL FREE 1-800-452-4545 TO VERIFY THE UNDERGROUND LOCATION OF GAS AND TELEPHONE LINES. THE CONTRACTOR SHALL ALSO CALL MR. RAY CAMPBELL OF (805) 452-4545 TO VERIFY THE UNDERGROUND LOCATION OF GAS AND TELEPHONE LINES. THE CONTRACTOR SHALL ALSO CALL MR. RAY CAMPBELL OF (805) 452-4545 TO VERIFY THE UNDERGROUND LOCATION OF GAS AND TELEPHONE LINES.



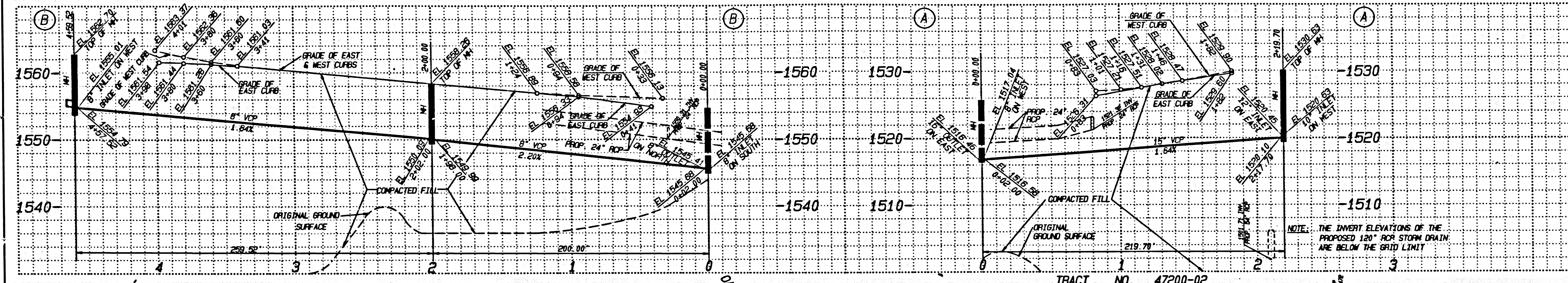
DELTA C/L SEWER CURVE DATA table with columns: DELTA, RADIUS, APC, TAN. It lists three curve segments with their respective geometric data.

NO L.A. CO. CHARGE FOR CONNECTION
SEE CO. SANITATION DISTRICT FOR SPECIAL CONNECTION CHARGES
TEL. (805) 889-7411 EX. 272
SANITARY SEWER PLANS IN TRACT NO. 47200-02 PC NO. 11406
REVIEWED BUILDING & SAFETY/LAND DEVELOPMENT DIVISION
By Saif G. Helal 8/17/98
COUNTY OF LOS ANGELES DEPARTMENT OF PUBLIC WORKS
PREPARED BY: SIKAND ENGINEERING ASSOCIATES CONSULTING ENGINEERS
15230 BURBANK BLVD., VAN NUYS, CALIFORNIA 91411 (818) 707-8558



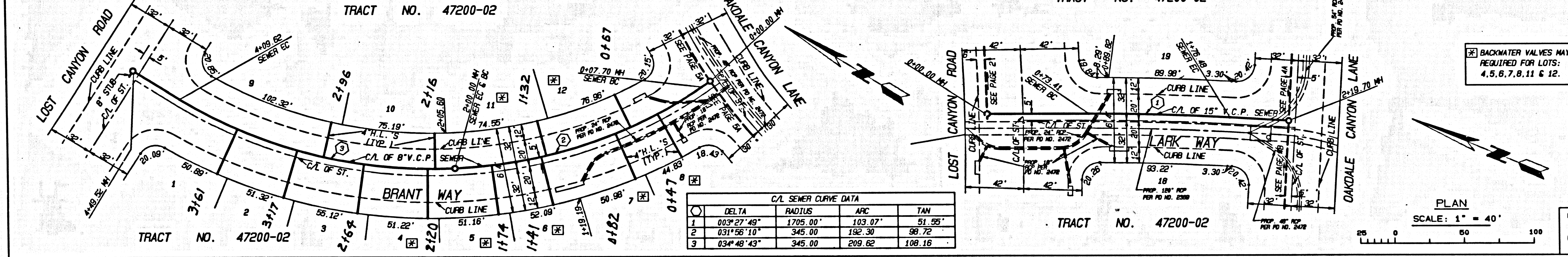
54609
COUNTY OF LOS ANGELES CALIFORNIA
TRACT NO. 47200-02

P.C. 11406 PAGE 3



NO. L.A. CO. CHARGE FOR CONNECTION
SEE CO. SANITATION DISTRICT FOR SPECIAL CONNECTION CHARGES
TEL. (802) 688-7411 EX. 2727

54610



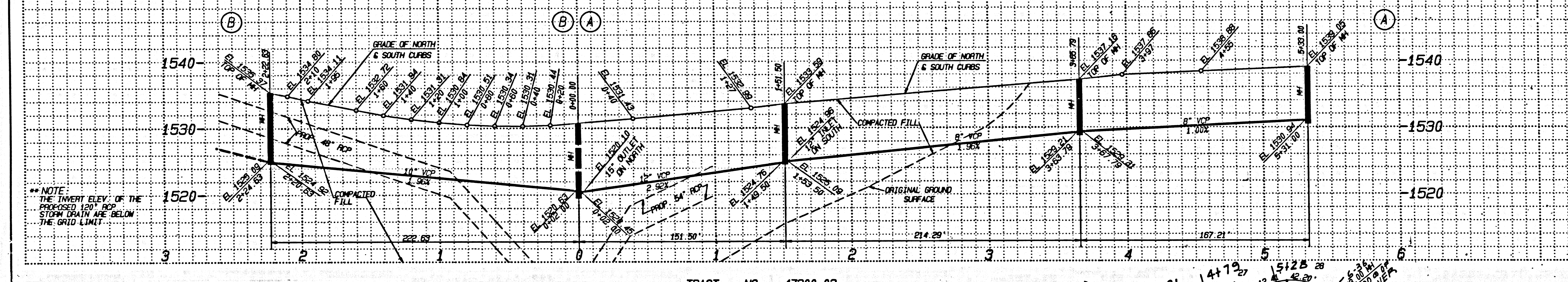
C/L SEWER CURVE DATA			
DELTA	RADIUS	APC	TAN
1 00°27'49"	1705.00'	103.07'	51.95'
2 031°56'10"	345.00'	192.30'	98.72'
3 03°48'43"	345.00'	209.82'	108.16'

BACKWATER VALVES MAY BE REQUIRED FOR LOTS: 4, 5, 6, 7, 8, 11 & 12.



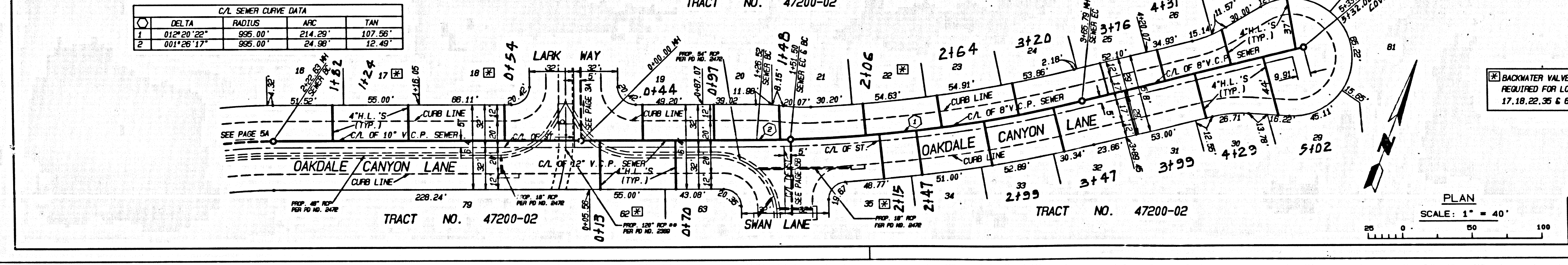
REVIEWED BY BUILDING & SAFETY/LAND DEVELOPMENT DIVISION
BY *S. G. Ivaldi* 8/13/98
SUBMISSION PLAN CHECKING SECTION DATE

P.C. 11406 PAGE 4



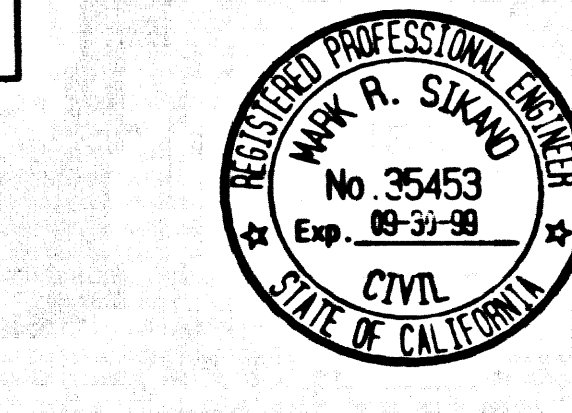
NO. L.A. CO. CHARGE FOR CONNECTION
SEE CO. SANITATION DISTRICT FOR SPECIAL CONNECTION CHARGES
TEL. (802) 688-7411 EX. 2727

54611



C/L SEWER CURVE DATA			
DELTA	RADIUS	APC	TAN
1 01°20'22"	995.00'	214.29'	107.56'
2 001°26'17"	995.00'	24.98'	12.49'

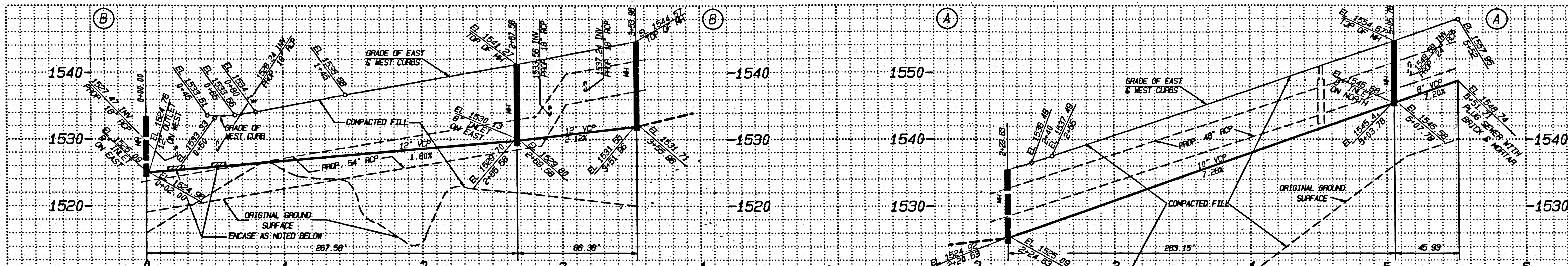
BACKWATER VALVES MAY BE REQUIRED FOR LOTS: 17, 18, 22, 35 & 62.



REVIEWED BY BUILDING & SAFETY/LAND DEVELOPMENT DIVISION
BY *S. G. Ivaldi* 8/13/98
SUBMISSION PLAN CHECKING SECTION DATE

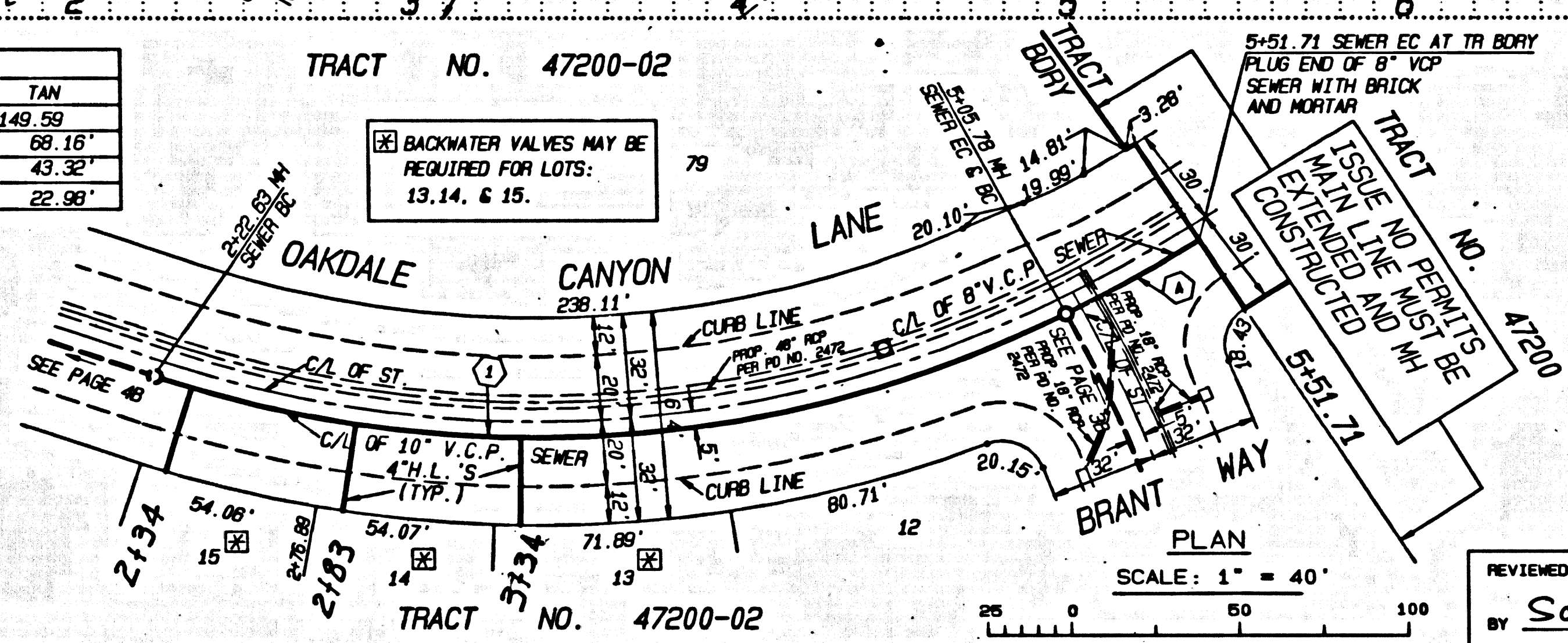
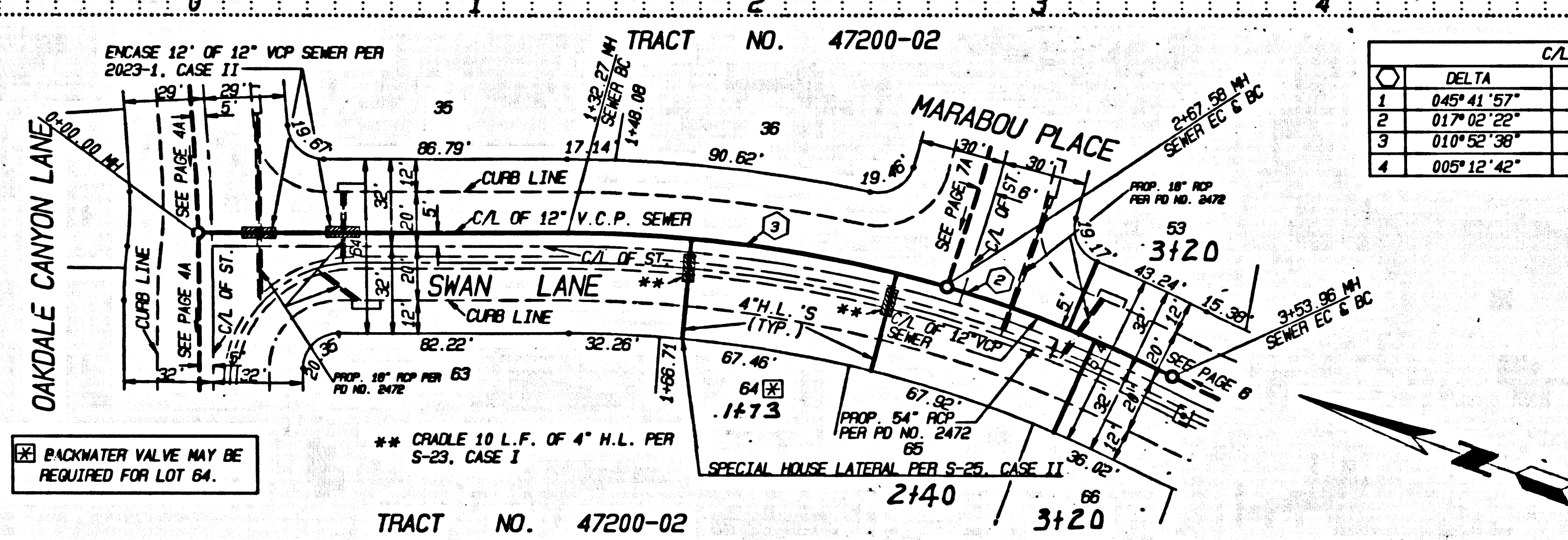
TRACT NO. 47200-02

TRACT NO. 47200-02

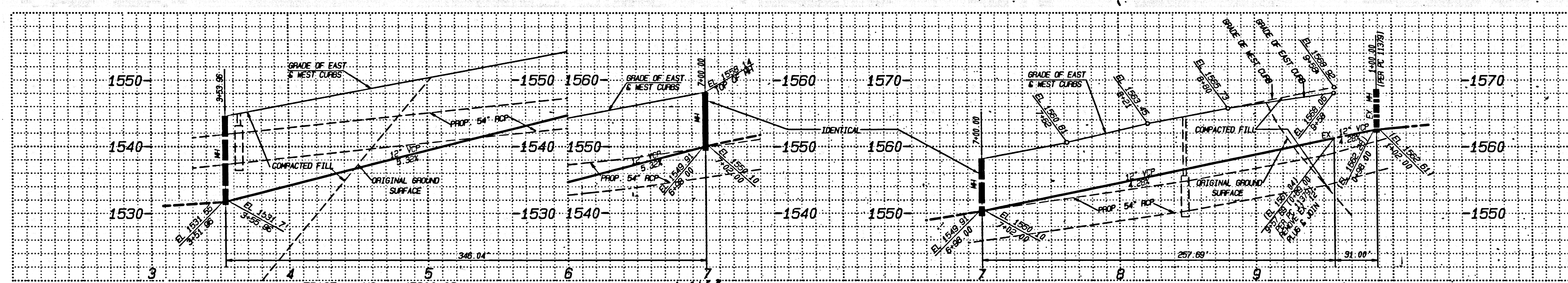


NO. L.A. CO. CHARGE FOR CONNECTION
SEE CO. SANITATION DISTRICT FOR SPECIAL CONNECTION CHARGES
TEL. (800) 600-7411 EX. 2727

54612

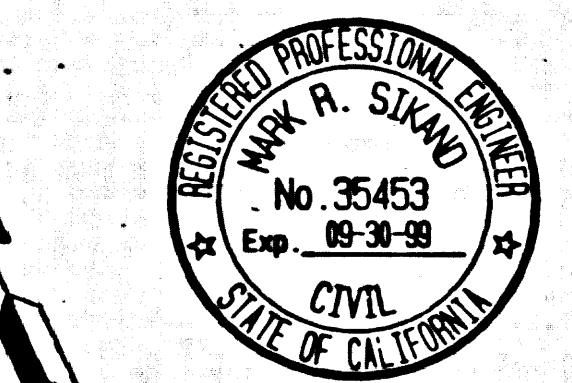
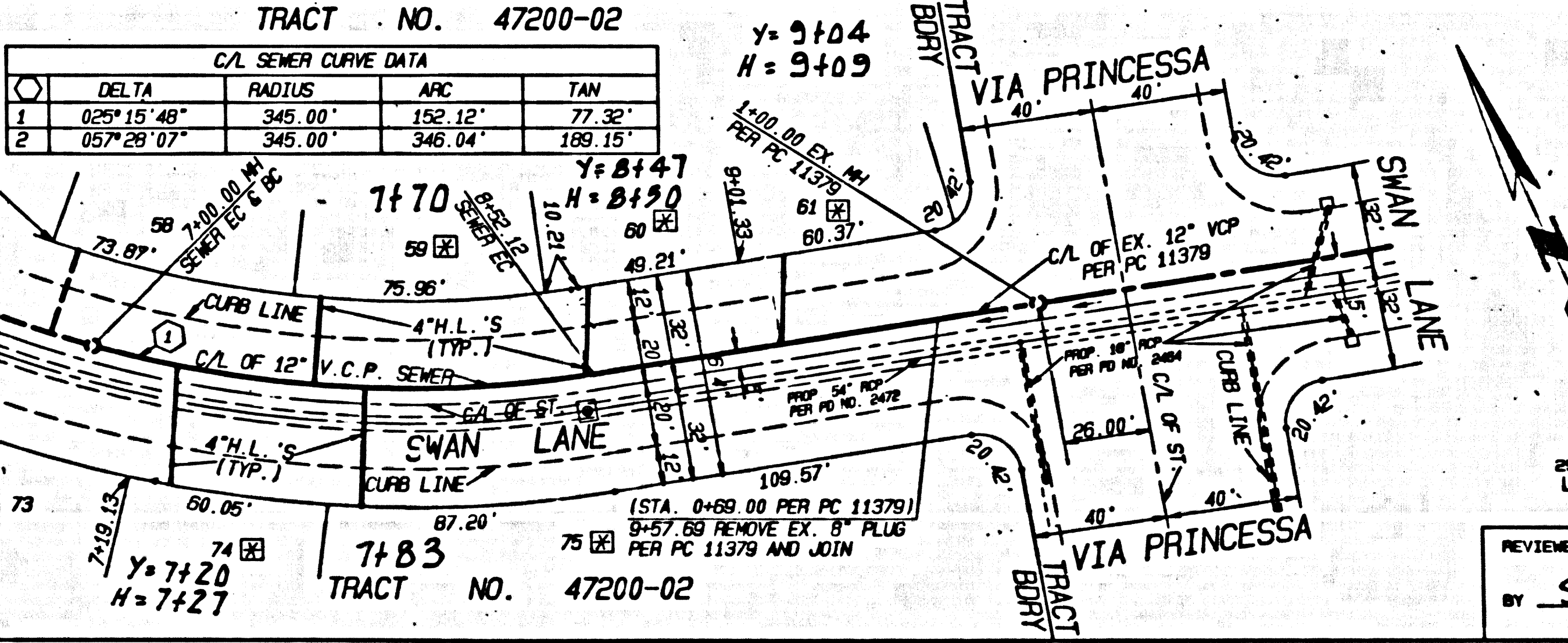
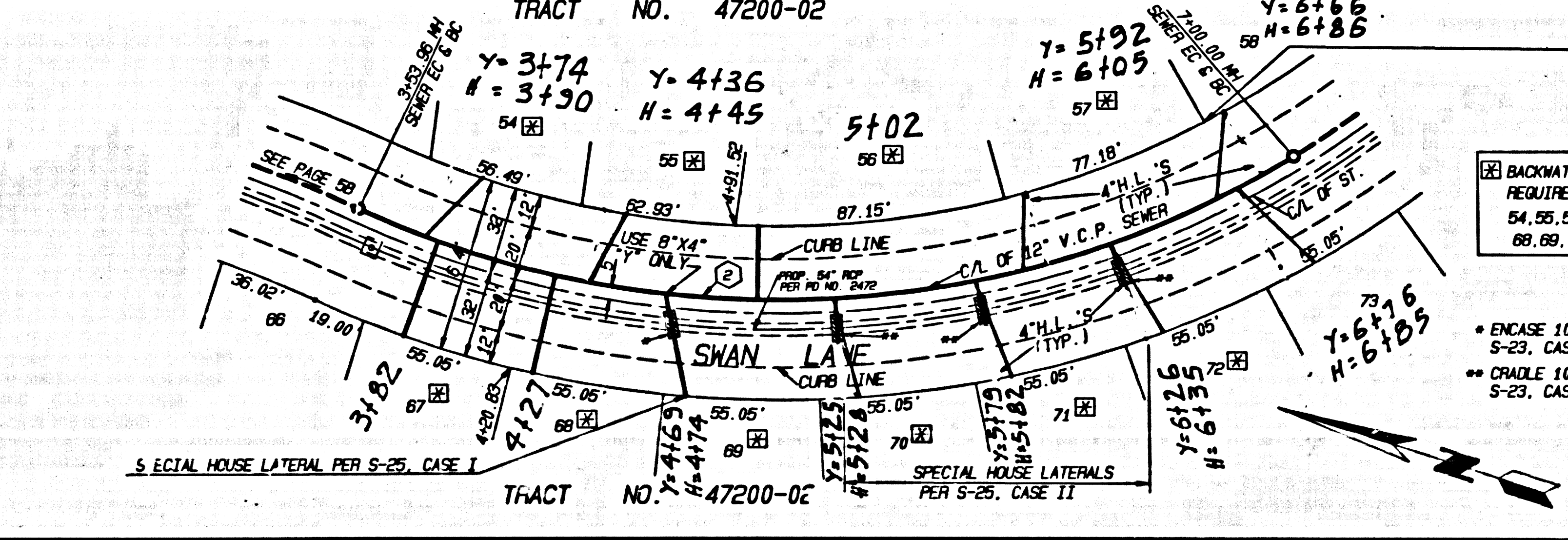


REVIEWED BY BUILDING & SAFETY/LAND DEVELOPMENT DIVISION
BY *Savitri G. Patel* 8/13/08
SUBDIVISION PLAN CHECKING SECTION DATE



NO. L.A. CO. CHARGE FOR CONNECTION
SEE CO. SANITATION DISTRICT FOR SPECIAL CONNECTION CHARGES
TEL. (800) 600-7411 EX. 2727

54613

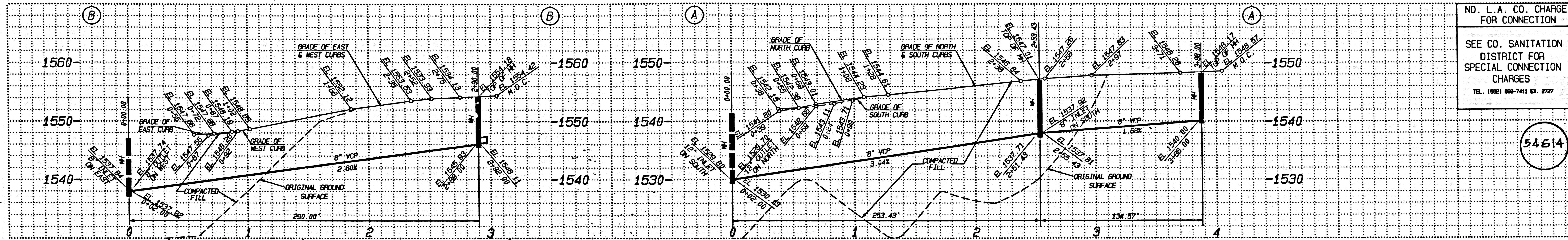


REVIEWED BY BUILDING & SAFETY/LAND DEVELOPMENT DIVISION
BY *Savitri G. Patel* 8/13/08
SUBDIVISION PLAN CHECKING SECTION DATE

3

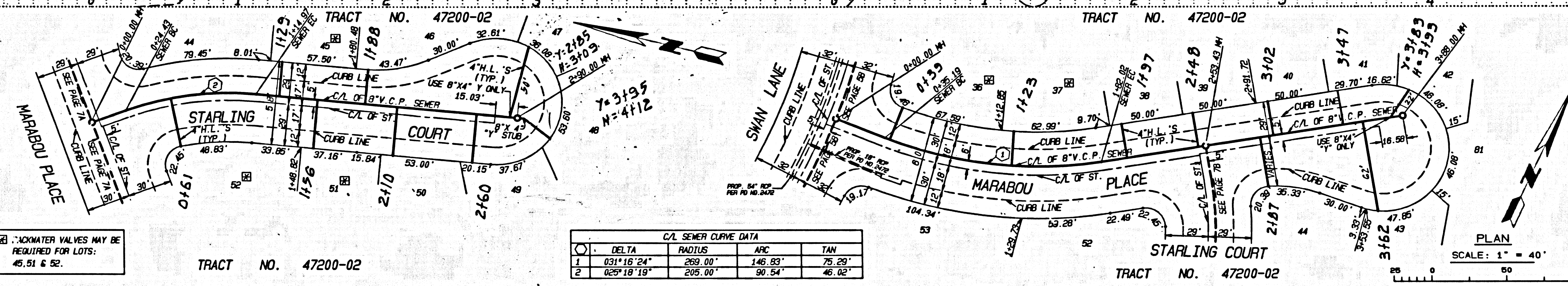
TRACT NO. 47200-05 BC 11406

TRACT NO. 47200-02



NO. L.A. CO. CHARGE FOR CONNECTION
SEE CO. SANITATION DISTRICT FOR SPECIAL CONNECTION CHARGES
TEL. (805) 690-7411 EX. 2707

54614



BACKWATER VALVES MAY BE REQUIRED FOR LOTS: 45, 51 & 52.

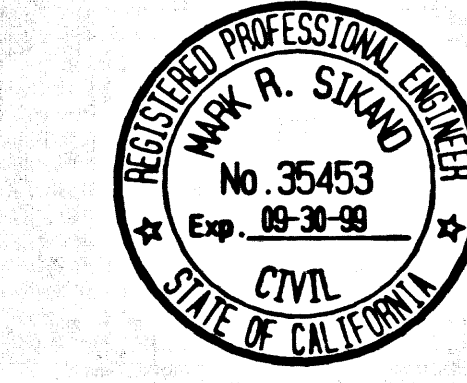
TRACT NO. 47200-02

C/L SEWER CURVE DATA			
Δ	RADIUS	ARC	TAN
1	031'18.24"	203.00'	746.93'
2	629'18.19"	295.00'	50.54'

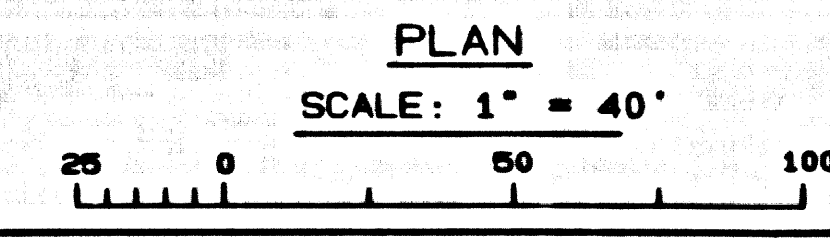
PLAN

SCALE: 1" = 40'

REVIEWED BY BUILDING & SAFETY/LAND DEVELOPMENT DIVISION
BY *Santiago Val* 8/12/99
SUBDIVISION PLAN CHECKING SECTION DATE



COLLECT CHARGES AS INDICATED
SEE CO. SANITATION DISTRICT FOR SPECIAL CONNECTION CHARGES
TEL. (805) 690-7411 EX. 2707



PLAN
SCALE: 1" = 40'

REVIEWED BY BUILDING & SAFETY/LAND DEVELOPMENT DIVISION
BY _____ DATE _____

7

TRACT NO. 47200-02

7/11/00/47200-02/000004-04