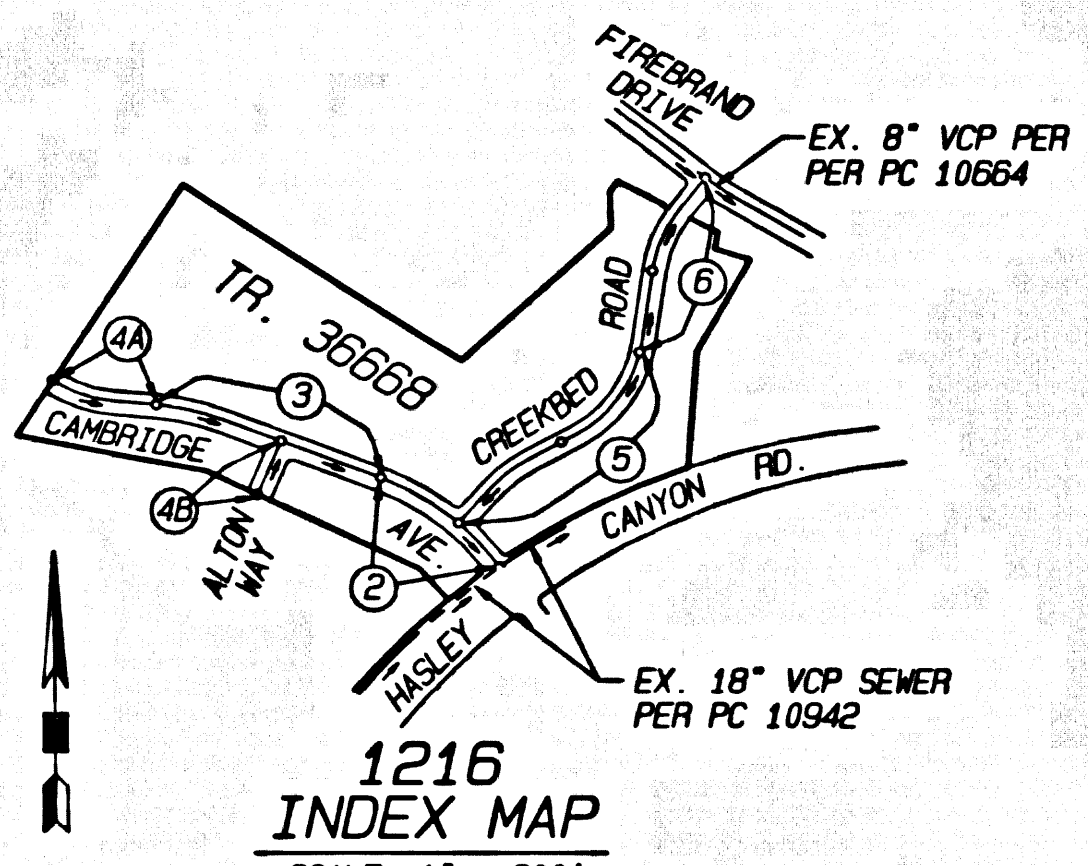


B.M. CL 3976 ELEV. 1065.685
 ROOM TAG IN C.B. 4 FT N BOR 70 FT N
 AND 30 FT E CL INT. OLD ROAD & HASLEY
 CANYON ROAD OFF-RAMP
 NEWHALL QUAD. 19 83

NO CONNECTION FOR THE DISPOSAL OF INDUSTRIAL WASTES SHALL BE MADE TO SEWER
 DOWN ON THESE DRAWINGS UNTIL A PERMIT FOR INDUSTRIAL WASTEWATER DISCHARGE
 AS BEEN ISSUED BY THE SANITATION DISTRICTS FOR SAID CONNECTIONS.

BEFORE BREAKING INTO OR CONSTRUCTION ON A COUNTY SANITATION DISTRICT SEWER
 AND PRIOR TO FINAL ACCEPTANCE OF THE PROJECT, A SANITATION DISTRICT INSPECTOR
 SHALL BE NOTIFIED BY PHONE AT (805) 855-6551, SO THAT REQUIRED INSPECTIONS CAN BE MADE.



1216
 INDEX MAP
 SCALE: 1" = 600'
 TRACT NO. 36668 P.C. 11424
 THOMAS GUIDE PG. NO. 4459/G-5
 NOTE: NUMBERS IN CIRCLES INDICATE PAGE NUMBERS

BUILDING AND SAFETY
 LOCAL OFFICE
 SANTA CLARITA

NO.	REVISION	REVISED BY	APPROVED BY	DATE

STORMWATER POLLUTION CONTROL REQUIREMENTS FOR SEWER CONSTRUCTION

1. Erosion estimates and other pollution must be retained on site and may not be transported from the site via sheetflow, water, area drains, natural drainage courses or wind.
2. Stockpiles of earth and other construction related materials must be protected from being transported from the site by the forces of wind or water.
3. Paved sites, pavements and other hard materials must be graded in accordance with their listing and are not to contain the soil and surface water. All surface storage containers must be protected from the weather. Soils must be cleaned up immediately and disposed of in a proper manner. Soils may not be washed into the drainage system.
4. Excess of waste concrete may not be washed into the public way on any other drainage system. Provisions shall be made to retain concrete wastes on site until they can be disposed of as solid waste.
5. Trash and construction related solid wastes must be deposited into a covered receptacle to prevent contamination of rainwater and dispersed by wind.
6. Sediments and other materials may not be tracked from the site by vehicle traffic. The construction entrance concepts must be stabilized so as to inhibit sediments from being deposited into the public way. Accidental discharges must be swept up immediately and may not be washed down by rain or other means.
7. Any slopes with disturbed soils or denuded of vegetation must be stabilized so as to inhibit erosion by wind and water.

The following BMPs are outlined in, but not limited to, the Best Management Practices Handbook, California Stormwater Quality Task Force, "BEST PRACTICES" (October, 1995), or the latest revised edition may apply during construction. (Additional measures may be required if deemed appropriate by County).

- | | |
|--|--|
| CA01 - DEMOLITION OPERATIONS | ES010 - SEEDING AND PLANTING |
| CA02 - PAVING OPERATIONS | ES011 - MULCHING |
| CA03 - STRUCTURE CONSTRUCTION AND PAINTING | ES020 - BEST PRACTICES |
| CA04 - MATERIAL DELIVERY AND STORAGE | ES021 - DUST CONTROLS |
| CA05 - SOIL TO WASTE MANAGEMENT | ES022 - TEMPORARY STREAM CROSSING |
| CA06 - HAZARDOUS WASTE MANAGEMENT | ES023 - CONSTRUCTION ROAD STABILIZATION |
| CA07 - CONCRETE WASTE MANAGEMENT | ES024 - STABILIZED CONSTRUCTION ENTRANCE |
| CA08 - SANITARY SEPTIC WASTE MANAGEMENT | ES024 - STORM DRAIN INLET PROTECTION |
| CA09 - WEHICLE AND EQUIPMENT CLEANING | |
| CA10 - WEHICLE AND EQUIPMENT FUELING | |
| CA11 - SCHEDULING | |
| ES02 - PRESERVATION OF EXISTING VEGETATION | |

STANDARD PLANS:
 THE FOLLOWING LATEST REVISED STANDARD PLANS ON FILE IN THE OFFICE OF THE DEPARTMENT OF PUBLIC WORKS SHALL APPLY TO THIS PROJECT.

- | | |
|-----------|---|
| APW 209-0 | BREAKING INTO EXISTING MANHOLES |
| APW 220-0 | HOUSE CONNECTION SEWER |
| APW 220-1 | HOUSE CONNECTION PRECAST |
| APW 220-2 | NON-REINFORCED PRECAST CONCRETE MANHOLE |
| APW 220-3 | BLANKET PROTECTION FOR PIPES |
| 209-0 | LEADS FOR SANITARY SEWER PLANS AND PROFILES AND DISTRICT MAPS |
| 202-0 | BEARING FOR SEWER PIPES |
| 202-1 | VIS OF THE SUPPORT |
| 202-2 | ALLOWABLE TRENCH WIDTHS |
| 202-3 | MINIMUM FACTOR OF SAFETY REQUIREMENTS |
| 202-4 | STANDARD MANHOLE TIPS |
| 202-5 | CHUCKER AND CHUCKER |
| 210-0 | REQUIREMENTS FOR SAN. SEWERS NEAR WATER MAINS |

THIS SEWER PRIVATE CONTRACT ACCEPTED FOR PUBLIC USE
 8-23-2005
 COUNTY OF LOS ANGELES
 LAND DEVELOPMENT DIVISION

LOTS 61, 62 AND 63 ARE OPEN SPACE LOTS RESTRICTED TO NO CONSTRUCTION AND WILL NOT BE SERVED BY THIS SEWER.

PRIVATE CONTRACT SEWER GENERAL NOTES

1. A SEWER CONSTRUCTION PERMIT SHALL BE OBTAINED AND A FEE PAID FOR CONSTRUCTION INSPECTION AND RECORD PLANS TO THE DEPARTMENT OF PUBLIC WORKS AT THE PERMIT OFFICE, 800 SOUTH FROST AVENUE, 5TH FLOOR, ALHAMBRA, AT LEAST 72 HOURS PRIOR TO STARTING WORK UNDER THIS CONTRACT. CONCEPTS OF ALL OTHER REQUIRED PERMITS, SUCH AS ROAD EXCAVATION, CALTRANS ETC. MUST BE FILED WITH THE PERMIT APPLICATION.
2. PRIOR TO SIGNATURE OF ANY PERMIT THE CONTRACTOR SHALL FILE A PERMIT FOR EXCAVATIONS AND TRENCHES FROM THE STATE OF CALIFORNIA DIVISION OF INDUSTRIAL SAFETY AND A CERTIFICATE OF WORKERS' COMPENSATION INSURANCE WITH THE DEPARTMENT OF PUBLIC WORKS NAMED AS THE CERTIFICATE HOLDER TO BE NOTIFIED ON DAYS PRIOR TO CANCELLATION OF PERMIT.
3. IF WORK IS TO BE DONE IN A STATE HIGHWAY, A PERMIT MUST BE OBTAINED FROM THE STATE OF CALIFORNIA DIVISION OF HIGHWAY, 120 SOUTH SPRING STREET, LOS ANGELES, CALIFORNIA.
4. WHEN WORK IS WITHIN A CONTRACT CITY, THE CONTRACTOR MUST CONTACT THE DIRECTOR OF PUBLIC WORKS OF THAT CITY TO DETERMINE THE LOCATION TO PAY THE INSPECTION FEE.
5. THE CONTRACTOR SHALL CONTACT THE DISTRICT OFFICE LISTED ON THE "APPLICATION FOR CONSTRUCTION PERMIT" TO ARRANGE FOR AN ACCEPTABLE CONSTRUCTION START DATE, AND SHALL NOTIFY THE CONSTRUCTION DIVISION BY TELEPHONE (661)409-3100 AT LEAST TWENTY-FOUR HOURS BEFORE STARTING ANY WORK UNDER THIS CONTRACT.
6. APPROVAL OF THIS PLAN BY THE COUNTY OF LOS ANGELES DOES NOT CONSTITUTE A REPRESENTATION AS TO ACCURACY OF THE LOCATION OF OR THE EXISTENCE OR NON-EXISTENCE OF ANY UNDERGROUND UTILITY PIPE OR STRUCTURE WITHIN THE LIMITS OF THIS PROJECT. THIS NOTE APPLIES TO ALL PAGES.
7. ALL WORK SHALL BE IN ACCORDANCE WITH THE "STANDARD SPECIFICATIONS FOR PUBLIC WORKS CONSTRUCTION, INCLUDING SUPPLEMENTALS AND SPECIAL PROVISIONS FOR THE CONSTRUCTION OF SANITARY SEWERS, AND SHALL BE PROSECUTED ONLY IN THE PRESENCE OF THE DEPARTMENT OF PUBLIC WORKS PERSONNEL.
8. THE CONTRACTOR'S ATTENTION IS DIRECTED TO SECTION 7-10.4.1 OF THE STANDARD SPECIFICATIONS FOR PUBLIC WORKS CONSTRUCTION IN REGARDS TO SAFETY ORDERS AND SHALL CONFORM TO THE "MINIMUM PUBLIC SAFETY REQUIREMENTS" AS SHOWN ON LOS ANGELES DEPARTMENT OF PUBLIC WORKS' STANDARD 8-2.
9. ELEVATIONS ARE IN FEET ABOVE U.S.C. & G.S. SEA LEVEL DATUM OF 1989.
10. NO REVISIONS SHALL BE MADE IN THESE PLANS WITHOUT THE APPROVAL OF THE DIRECTOR OF PUBLIC WORKS.
11. NO REPRESENTATIVE OF THE DEPARTMENT OF PUBLIC WORKS WILL SURVEY OR LAY OUT ANY PORTION OF THE WORK.
12. GRADES TO WHICH THIS IMPROVEMENT IS TO BE CONSTRUCTED ARE SHOWN ON PLANS AND PROFILES. GRADE POINTS FOR TOP OF CURBS, CONTROL LINE OF STREETS, OR CENTERLINE OF ALLEYS ARE SHOWN BY CIRCLES ON PROFILES AT ALL POINTS BETWEEN DESIGNATED POINTS. THE GRADE SHALL BE ESTABLISHED SO AS TO CONFORM TO A STRAIGHT LINE DRAWN BETWEEN SAID DESIGNATED POINTS.
13. THE PRIVATE ENGINEER SHALL FURNISH THE DEPARTMENT OF PUBLIC WORKS WITH GRADE SHEETS AND STATIONING FOR ALL HOUSE LATERALS AND MAIN LINE BRANCHES AND SHALL PROVIDE STAKES FOR THEM AT THEIR PROPER LOCATIONS WITH STATIONING PLACED EXCEPT AS SHOWN ON THE PLANS. HOUSE LATERALS FROM CHIMNEYS SHALL NOT HAVE AN ANGLE OF LESS THAN 90° WITH THE MAIN LINE SEWER AND ANY CHANGE IN ALIGNMENT SHALL BE INDICATED BY A STRAIGHT ALIGNMENT AT RIGHT ANGLES FROM THE MAIN LINE SEWER.
14. THE PRIVATE ENGINEER SHALL FURNISH THE HOUSE LATERAL DEPTH AT THE PROPERTY LINE BELOW THE TOP CURB ELEVATION FOR EACH HOUSE LATERAL ON THE GRADE SHEET.

CONSTRUCTION NOTES

1. PROVIDE SURVEY STAKES ON THE PROPERTY LINE OR PROPERTY LINES PRODUCED AT RIGHT ANGLES TO THE SEWER LINE AT THE CENTERLINE OF EACH MANHOLE.
2. VITRIFIED CLAY PIPE JOINTS SHALL BE TYPE "D" OR "D" PER STANDARD SPECIFICATIONS SECTION 200-2.
3. IF A POWER POLE IS WITHIN THREE FEET OF THE SEWER, THE SEWER SHALL BE ENCASED PER STANDARD PLAN 200S-1, CASE II, TWO FEET ON EACH SIDE FROM THE POINT OF INTERFERENCE.
4. ALL JOINTS BETWEEN CAST IRON PIPE AND VITRIFIED CLAY PIPE SHALL BE MADE WITH A RUBBER BUSH JOINT, TYPE "D" (WITH BUSHING IF NECESSARY) PER STANDARD SPECIFICATIONS SECTION 200-2.
5. HOUSE LATERALS TO BE CONSTRUCTED WITH INVERTS AT PROPERTY LINE 8 FEET BELOW CURB GRADE EXCEPT AS NOTED.
6. WYE OR TEE BRANCHES MAY BE USED FOR CONNECTIONS TO MAINLINE SEWERS EXCEPT AS NOTED.
7. IF DURING THE COURSE OF CONSTRUCTION, IT IS DETERMINED THAT THERE IS LESS THAN FOUR FEET OF COVER OVER THE TOP OF MAINLINE HOUSE LATERALS, THE SEWER PRIOR TO BE RELOCATED ON THE PLANS. THE PIPE SHALL BE ENCASED PER STANDARD PLAN 8-23 CASE II, UNLESS OTHERWISE APPROVED BY THE DIRECTOR OF PUBLIC WORKS.
8. ALL STRUCTURES SHALL BE EITHER BRICK SEWER MANHOLES PER STANDARD PLAN 8-23 OR PRECAST CONCRETE SEWER MANHOLES PER STANDARD PLAN 8-23, OR REINFORCED PRECAST CONCRETE MANHOLE PER STANDARD PLAN 8-23, EXCEPT AS NOTED.
9. REINFORCE ALL TRENCHES WITHIN PAVED AREAS TO MEET LOS ANGELES COUNTY PUBLIC WORKS OR CALIFORNIA STATE HIGHWAY REQUIREMENTS IN ACCORDANCE WITH THE PERMITS.
10. ALL COMPLIANCE WITH SECTION 200-1.3.4 OF THE STANDARD SPECIFICATIONS WILL BE REQUIRED FOR BACKFILL IN STREETS. IDENTIFICATION OF BACKFILL COMPOSITION, AND SAND EQUIVALENTS BY A QUALIFIED CIVIL ENGINEER SHALL BE PROVIDED BY THE PERMITTEE PRIOR TO THE ISSUANCE OF A CERTIFICATE OF PARTIAL ACCEPTANCE.
11. ALL BACKFILL AND FILLS OUTSIDE OF STREET RIGHT OF WAY SHALL BE COMPACTED TO 90% OF MAXIMUM DENSITY AS DETERMINED BY THE BEST COMPACTION TEST TO 100% OF HEIGHT TO UNLESS OTHERWISE SPECIFIED. THIS SHALL BE CERTIFIED BY A QUALIFIED CIVIL ENGINEER. THIS CERTIFICATION SHALL BE SUBMITTED TO THE CONSTRUCTION DIVISION OF THE DEPARTMENT OF PUBLIC WORKS PRIOR TO ACCEPTANCE OF THE WORK BY THE CERTIFICATE OF PARTIAL ACCEPTANCE.
12. MANHOLE TOPS IN IMPROVED RIGHTS OF WAY TO BE LEVEL WITH FINISHED GRADE.
13. SEWERS TO BE TESTED FOR LEAKAGE PER SECTION 200-1.4 OF THE STANDARD SPECIFICATION AND SPECIAL PROVISIONS.
14. ALL WYES AND/OR HOUSE LATERALS ARE TO BE LOCATED AT LEAST FIVE FEET APART AND WHEN POSSIBLE NOT CLOSER THAN FIVE FEET TO ANY MANHOLE.

PROFILE, ALIGNMENT AND GRADE OF
 SANITARY SEWERS
 TO BE CONSTRUCTED IN
 TRACT NO. 36668 PC NO. 11424
 3 SHEETS: 6 PAGES
 COUNTY OF LOS ANGELES CALIFORNIA
 INDEX 1216

HARRY W. STONE DIRECTOR OF PUBLIC WORKS

APPROVED BY BUILDING & SAFETY/AND DEVELOPMENT DIVISION
 BY *Ronald D. O'Neil* 4-6-99
 DISTRICT ENGINEER

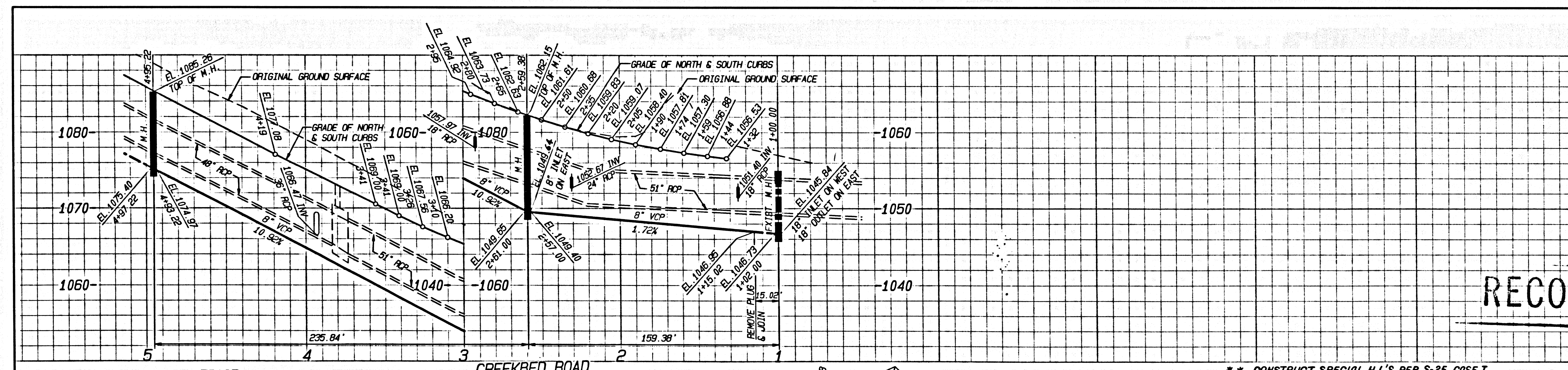
SUBMITTED BY *Shikand* 4/6/99
 DISTRICT ENGINEER

APPROVED: COUNTY SANITATION DISTRICT
 OF LOS ANGELES CALIF.
 CHARLES W. CARRY - CHIEF ENGINEER and GENERAL MANAGER
 COUNTY SANITATION DISTRICT NO. 32

BY *James Hayes* DATE: 4-7-1999
 DISTRICT ENGINEER

PRIVATE ENGINEERS NOTICE TO CONTRACTORS:
 THE EXISTENCE AND LOCATION OF ANY UNDERGROUND UTILITY PIPES OR STRUCTURES SHOWN ON THESE PLANS IS REQUIRED BY A SEARCH OF AVAILABLE RECORDS TO THE BEST OF OUR KNOWLEDGE. THERE ARE NO EXISTING UTILITIES EXCEPT AS SHOWN ON THIS MAP. THE CONTRACTOR IS REQUIRED TO TAKE PRECAUTIONARY MEASURES TO PROTECT THE UTILITY LINES SHOWN AND ANY OTHER LINES NOT OF RECORD OR NOT SHOWN ON THIS DRAWING. PRIOR TO EXCAVATION THE CONTRACTOR SHALL CALL TOLL FREE 1-800-452-4133 TO VERIFY THE UNDERGROUND LOCATION OF GAS AND TELEPHONE LINES. THE CONTRACTOR SHALL ALSO CALL THE RENT CUMINGS OF GENERAL TELEPHONE COMPANY AT 1-805-540-8671 SO THAT THEY CAN MARK THE LOCATION OF UNDERGROUND TELEPHONE LINES.

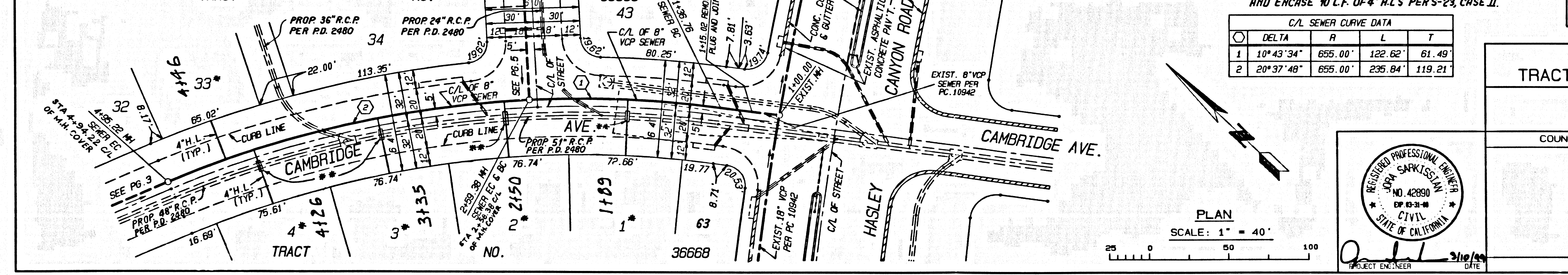
Shikand 03/10/99
 P.E. NO. 45560 DATE



P.C. 11424 PAGE 2

NO L.A. CO. CHARGE FOR CONNECTION
 SEE CO. SANITATION DISTRICT FOR SPECIAL CONNECTION CHARGES
 TEL. (562) 699-7411 EX. 2727

54693



RECORD PLANS

CA SEWER CURVE DATA

DELTA	R	L	T
1 10°43'34"	855.00'	122.62'	81.49'
2 20°37'48"	855.00'	235.84'	119.21'

*** CONSTRUCT SPECIAL H.L.S PER S-25, CASE I AND ENCASE 10' L.F. OF 4" H.L.S PER S-23, CASE II.

* BACKWATER VALVES MAY BE REQUIRED FOR LOTS 1, 2, 3, 4 AND 33.

SANITARY SEWER PLANS IN
 TRACT NO. 36668 PC NO. 11424

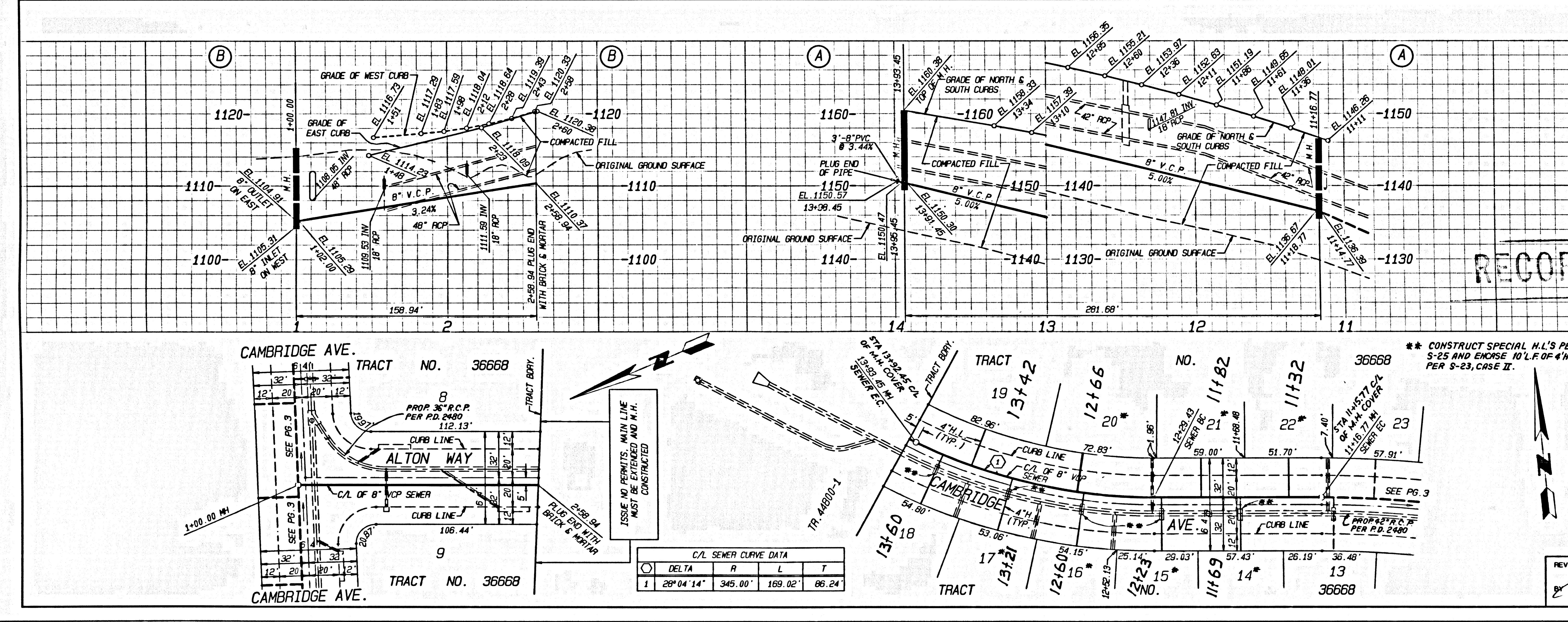
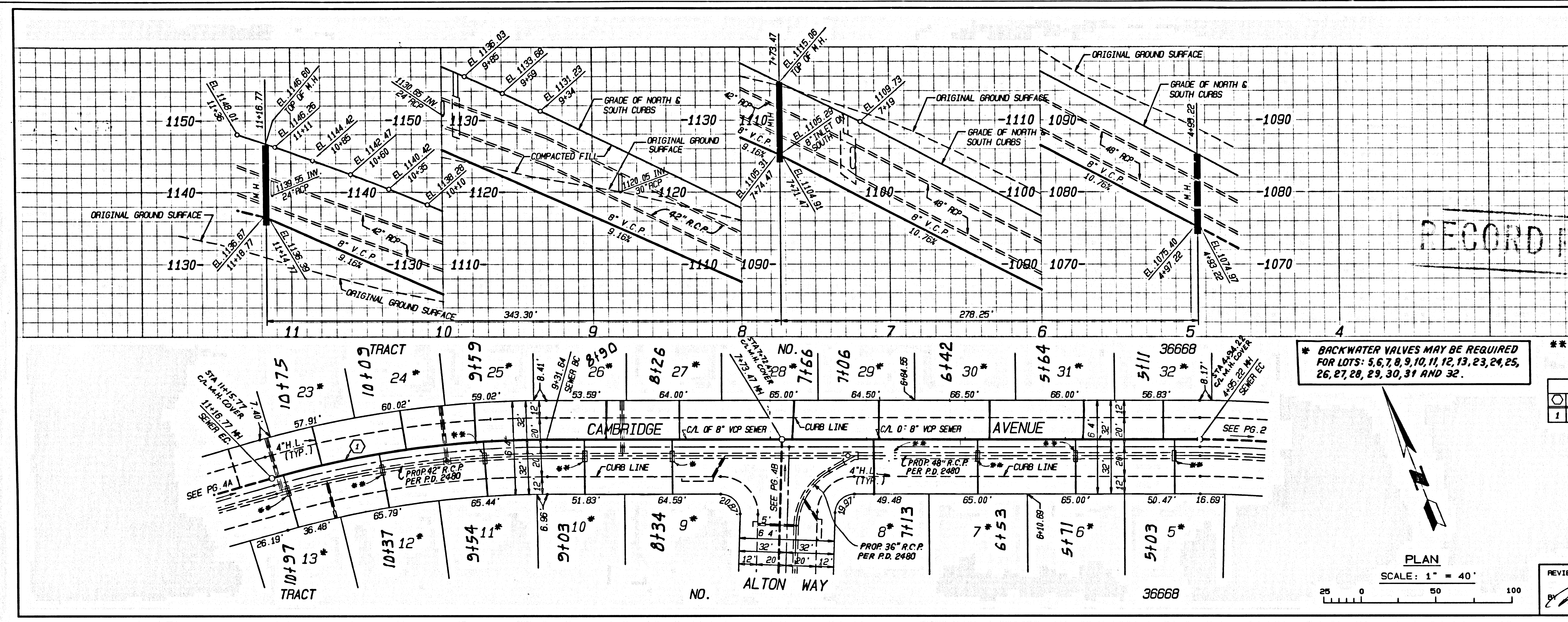
REVISIONS BY BUILDING & SAFETY AND DEVELOPMENT DIVISION
 BY *Shikand* 4/6/99
 DISTRICT ENGINEER

COUNTY OF LOS ANGELES DEPARTMENT OF PUBLIC WORKS

SIKAND ENGINEERING ASSOCIATES
 CONSULTING ENGINEERS
 15230 BURNBANK BLVD.,
 VAN NUYS, CALIFORNIA 91411 (818) 787-8558

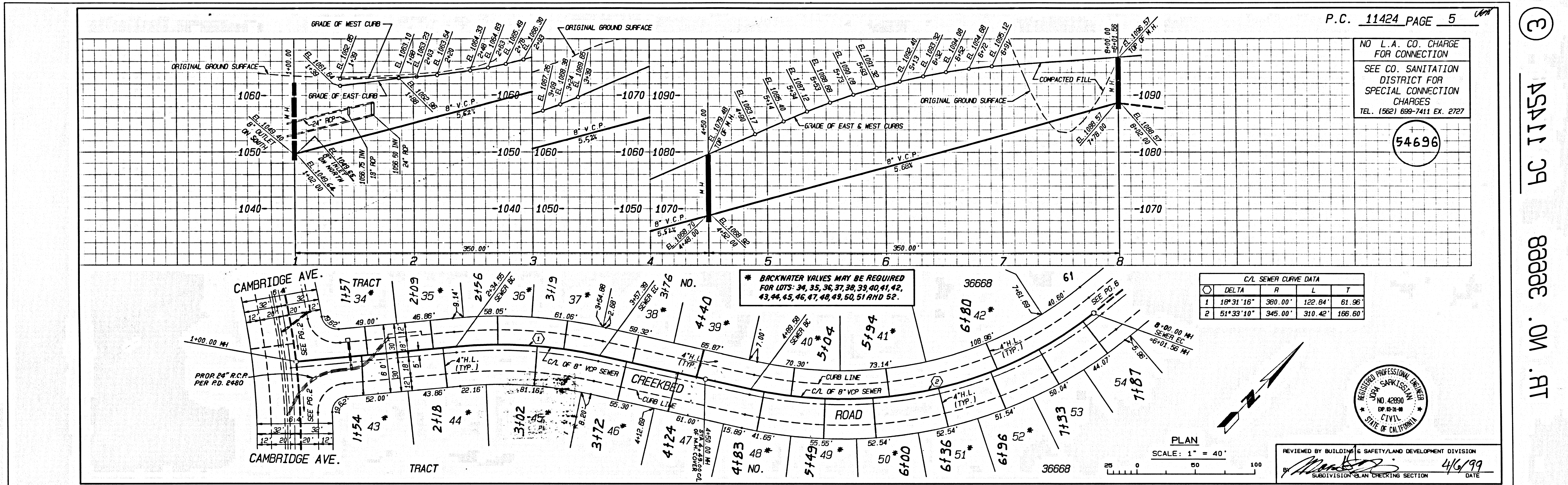
RECORD PLANS

45411 39
 88888 .0M .PT



5
 AS111 39
 88888 OM RT

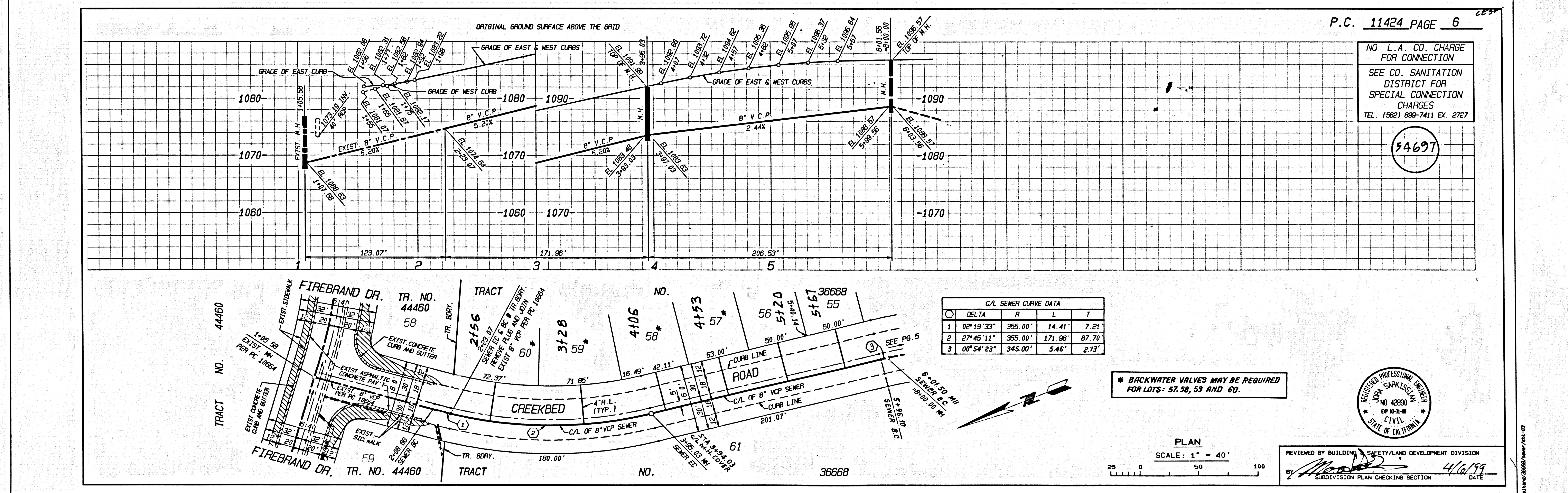
5
 AS111 39
 88888 OM RT



3

AS111 39

8888 .0M .RT



6

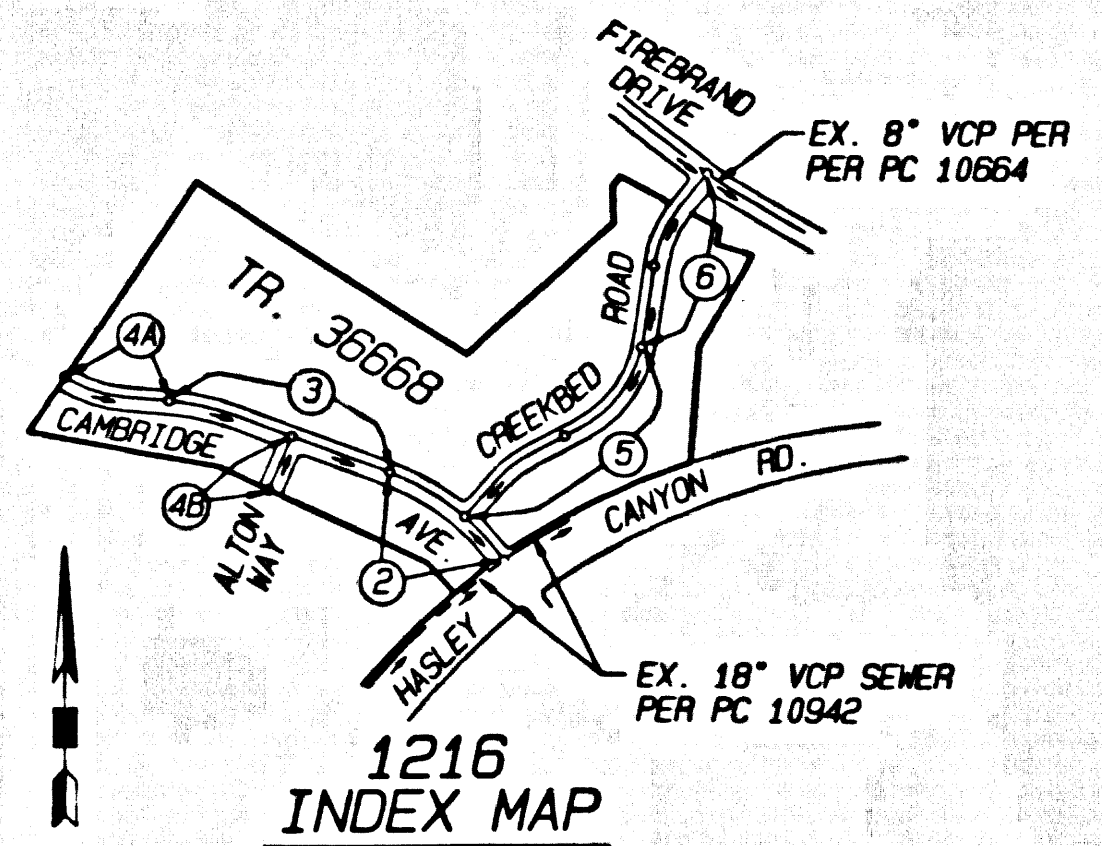
8888 .0M .RT

8888 .0M .RT

B.M. CL 3976 ELEV. 1065.685
FROM T&I IN C.B. 4 FT N 80° 79 FT N
AND 50 FT E CL INT. OLD ROAD & HASLEY
CANYON ROAD OFF-RAMP
NEWHALL QUAD. 19.83

NO CONNECTION FOR THE DISPOSAL OF INDUSTRIAL WASTES SHALL BE MADE TO SEWER
SHOWN ON THESE DRAWINGS UNTIL A PERMIT FOR INDUSTRIAL WASTEWATER DISCHARGE
HAS BEEN ISSUED BY THE SANITATION DISTRICTS FOR SAID CONNECTIONS.

BEFORE BREAKING INTO CONSTRUCTION BY A COUNTY SANITATION DISTRICT SEWER
AND PRIOR TO FINAL ACCEPTANCE OF THE PROJECT, A SANITATION DISTRICT INSPECTOR
SHALL BE NOTIFIED BY PHONE AT (805) 266-6055, SO THAT REQUIRED INSPECTIONS CAN BE MADE.



SCALE: 1" = 500'
TRACT NO. 36688 P.C. 11424
THOMAS GUIDE PG. NO. 4459/G-5
NOTE: NUMBERS IN CIRCLES INDICATE PAGE NUMBERS

NO.	REVISION	REVISED BY	APPROVED BY	DATE

STORMWATER POLLUTION CONTROL REQUIREMENTS FOR SEWER CONSTRUCTION

- Erosion sediments and other pollutants must be retained on site and may not be transported from the site via street curbs, ditches, open drainage, natural drainage courses or wind.
- Blockades of earth and other construction related materials must be protected from being transported from the site by the forces of wind or water.
- Pesticides, oils, solvents and other toxic materials must be stored in accordance with local, state and federal regulations. Containers must be sealed and surface water. All approved storage containers must be protected from the weather. Spills must be cleaned up immediately and disposed of in a proper manner. Spills may not be washed into the drainage system.
- Excess or waste concrete may not be washed into the public way on any other drainage system. Provisions shall be made to retain concrete wastes on site until they can be disposed of as solid waste.
- Trash and construction related solid wastes must be deposited into a covered receptacle to prevent contamination of rainwater and dispersed by wind.
- Sediments and other materials may not be tracked from the site by vehicle traffic. The construction entrance roadway must be stabilized so as to inhibit sediments from being deposited into the public way. Accidental spills must be swept up immediately and may not be washed down by rain or other means.
- Any slopes with disturbed soils or damaged vegetation must be stabilized so as to inhibit erosion by wind and water.

The following BMPs are outlined in, but not limited to, the Best Management Practices Handbook, California Stormwater Quality Task Force, Sacramento, California, 1995, or the latest revised edition may apply during construction (additional measures may be required if deemed appropriate by County).

- | | |
|--|---|
| CA01 - SEEDING OPERATIONS | ES01 - SEEDING AND PLANTING |
| CA02 - PAVING OPERATIONS | ES02 - MULCHING |
| CA03 - STRUCTURE CONSTRUCTION AND PAINTING | ES03 - BARRIERS AND MATS |
| CA04 - MATERIAL DELIVERY AND STORAGE | ES04 - DUST CONTROLS |
| CA05 - SOIL WASTE MANAGEMENT | ES05 - TEMPORARY EROSION CONTROL |
| CA06 - HAZARDOUS WASTE MANAGEMENT | ES06 - CONSTRUCTION ROAD STABILIZATION |
| CA07 - CONCRETE WASTE MANAGEMENT | ES07 - STABILIZED CONSTRUCTION ENTRANCE |
| CA08 - SANITARY/SEPTIC WASTE MANAGEMENT | ES08 - STORM DRAIN SILENT PROTECTION |
| CA09 - VEHICLE AND EQUIPMENT CLEANING | |
| CA10 - VEHICLE AND EQUIPMENT FUELING | |
| CA11 - VEHICLE AND EQUIPMENT MAINTENANCE | |
| ES01 - SCHEDULING | |
| ES02 - PRESERVATION OF EXISTING VEGETATION | |

STANDARD PLANS:

THE FOLLOWING LATEST REVISED STANDARD PLANS ON FILE IN THE OFFICE OF THE DEPARTMENT OF PUBLIC WORKS SHALL APPLY IN THE CONSTRUCTION OF THIS PROJECT.

- APWA 208-1 BREAKING INTO EXISTING MANHOLES
- APWA 208-2 HOUSE CONNECTION REWORKING
- APWA 208-3 NON-REINFORCED PRECAST CONCRETE MANHOLE
- APWA 208-4 BLANKET PROTECTION FOR PIPES

- 2008-1 LEGEND FOR SANITARY SEWER PLANS AND PROFILES AND DISTRICT MAPS.
- 2008-2 RECORDING FOR SEWER PIPE
- 2008-3 WFE ON THE SUPPORT
- 2008-4 ALLOWABLE TRENCH WIDTHS
- 2008-5 MINIMUM PUBLIC SAFETY REQUIREMENTS
- 2008-6 STANDARD MANHOLE STEPS
- 2008-7 CRACKING AND ENGINEERING REQUIREMENTS FOR SAN. SEWERS NEAR WATER MAIN

LOTS 61, 62 AND 63 ARE OPEN SPACE LOTS RESTRICTED TO NO CONSTRUCTION AND WILL NOT BE SERVED BY THIS SEWER.

PRIVATE CONTRACT SEWER GENERAL NOTES

- A SEWER CONSTRUCTION PERMIT SHALL BE OBTAINED AND A FEE PAID FOR CONSTRUCTION INSPECTION AND RECORD PLANS TO THE DEPARTMENT OF PUBLIC WORKS AT THE PERMIT LOCATION, 800 SOUTH PLYMOUTH AVENUE, 8TH FLOOR, ALHAMBRA, AT LEAST 72 HOURS BEFORE THE COMMENCEMENT OF CONSTRUCTION. ALL OTHER REQUIRED PERMITS, SUCH AS ROAD EXCAVATION, CALTRANS ETC. MUST BE FILED WITH THE PERMIT APPLICATION.
- PRIOR TO ISSUANCE OF ANY PERMIT THE CONTRACTOR SHALL FILE A PERMIT FOR EXCAVATIONS AND TRENCHES FROM THE STATE OF CALIFORNIA DIVISION OF INDUSTRIAL SAFETY AND A CERTIFICATE OF WORKING. COVERAGE INSURANCE WITH THE DEPARTMENT OF PUBLIC WORKS NAMED AS THE CERTIFICATE HOLDER TO BE NOTIFIED 30 DAYS PRIOR TO CANCELLATION OF POLICY.
- IF WORK IS TO BE DONE ON A STATE HIGHWAY, A PERMIT MUST BE OBTAINED FROM THE STATE OF CALIFORNIA DIVISION OF HIGHWAYS, 180 SOUTH SPRING STREET, LOS ANGELES, CALIFORNIA.
- WHEN WORK IS WITHIN A CONTRACT CITY, THE CONTRACTOR MUST CONTACT THE DIRECTOR OF PUBLIC WORKS OF THAT CITY TO DETERMINE THE LOCATION TO PAY THE INSPECTION FEE.
- THE CONTRACTOR SHALL CONTACT THE DISTRICT OFFICE LISTED ON THE "APPLICATION FOR CONSTRUCTION PERMIT" TO ARRANGE FOR AN ACCEPTABLE CONTRACTOR TO BE SHOWN TO THE CONSTRUCTION DIVISION BY TELEPHONE: (442) 459-5128 AT LEAST TWENTY-FOUR HOURS BEFORE STARTING ANY WORK UNDER THIS CONTRACT.
- APPROVAL OF THIS PLAN BY THE COUNTY OF LOS ANGELES DOES NOT CONSTITUTE A REPRESENTATION AS TO ACCURACY OF THE LOCATION OF OR THE EXISTENCE OR NON-EXISTENCE OF ANY UNDERGROUND UTILITY PIPES OR STRUCTURE WITHIN THE LIMITS OF THIS PROJECT. THIS NOTE APPLIES TO ALL PAGES.
- ALL WORK SHALL BE IN ACCORDANCE WITH THE "STANDARD SPECIFICATIONS FOR PUBLIC WORKS CONSTRUCTION, INCLUDING SUPPLEMENTS AND THE SPECIAL PROVISIONS FOR THE CONSTRUCTION OF SANITARY SEWERS, AND SHALL BE PROSECUTED ONLY IN THE PRESENCE OF THE DEPARTMENT OF PUBLIC WORKS PERSONNEL.
- THE CONTRACTOR'S ATTENTION IS DIRECTED TO SECTION 7-10.4.1 OF THE STANDARD SPECIFICATIONS FOR PUBLIC WORKS CONSTRUCTION IN REGARD TO SAFETY DRESSING AND SHALL CONFORM TO THE "MINIMUM PUBLIC SAFETY REQUIREMENTS" AS SHOWN ON LOS ANGELES DEPARTMENT OF PUBLIC WORKS STANDARD S-2.
- ELEVATIONS ARE IN FEET ABOVE U.S.C. & G.S. SEA LEVEL DATUM OF 1988.
- NO REVISIONS SHALL BE MADE IN THESE PLANS WITHOUT THE APPROVAL OF THE DIRECTOR OF PUBLIC WORKS.
- NO REPRESENTATIVE OF THE DEPARTMENT OF PUBLIC WORKS SHALL SIGN OR LAY OUT ANY PORTION OF THE WORK.
- GRADES TO WHICH THIS IMPROVEMENT IS TO BE CONSTRUCTED ARE SHOWN ON PLANS AND PROFILES. GRADE POINTS FOR TOP OF CURBS, CENTERLINE OF STREETS, OR CENTERLINE OF ALLEYS ARE SHOWN BY CIRCLES ON PROFILES AT ALL POINTS BETWEEN DESIGNATED POINTS. THE GRADE SHALL BE ESTABLISHED SO AS TO CONFORM TO A STRAIGHT LINE DRAWN BETWEEN SAID DESIGNATED POINTS.
- THE PRIVATE ENGINEER SHALL FURNISH THE DEPARTMENT OF PUBLIC WORKS WITH GRADE SHEETS AND STATIONING FOR ALL HOUSE LATERALS AND CURB BRANCHES AND SHALL PROVIDE STAKES FOR THEM AT THEIR PROPER LOCATIONS WITH STATIONING PLAINLY MARKED. ALL HOUSE LATERALS SHALL BE CONSTRUCTED IN A STRAIGHT ALIGNMENT AT RIGHT ANGLES FROM THE MAIN LINE SEWER EXCEPT AS SHOWN ON THE PLANS. HOUSE LATERALS FROM CURBS SHALL NOT HAVE AN ANGLE OF LESS THAN 60° WITH THE H.L. SEWER. ANY CHANGE IN ALIGNMENT SHALL BE REQUESTED IN WRITING BY THE PRIVATE ENGINEER.
- THE PRIVATE ENGINEER SHALL FURNISH THE HOUSE LATERAL DEPTH AT THE PROPERTY LINE BELOW THE TOP CURB ELEVATION FOR EACH HOUSE LATERAL ON THE GRADE SHEET.

CONSTRUCTION NOTES

- PROVIDE SURVEY STAKES ON THE PROPERTY LINE OR PROPERTY LINES PRODUCED AT RIGHT ANGLES TO THE SEWER LINE AT THE CENTERLINE OF EACH MANHOLE.
- VERTIFIED CLAY PIPE JOINTS SHALL BE TYPE "D" OR "E" PER STANDARD SPECIFICATIONS SECTION 208-2.
- IF A POWER POLE IS WITHIN THREE FEET OF THE SEWER, THE SEWER SHALL BE ENCASED PER STANDARD PLAN 208-1, CASE II, TWO FEET ON EACH SIDE FROM THE POINT OF INTERFERENCE.
- ALL JOINTS BETWEEN CAST IRON PIPE AND VITRIFIED CLAY PIPE SHALL BE MADE WITH A RUBBER ELBOW JOINT, TYPE "D" (WITH BUSHING IF NECESSARY) PER STANDARD SPECIFICATIONS SECTION 208-2.
- HOUSE LATERALS TO BE CONSTRUCTED WITH INVERTS AT PROPERTY LINE 8 FEET BELOW CURB GRADE EXCEPT AS NOTED.
- WFE ON THE BRANCHES MAY BE USED FOR CONNECTIONS TO MAINLINE SEWERS EXCEPT AS NOTED.
- IF DURING THE COURSE OF CONSTRUCTION, IT IS DETERMINED THAT THERE IS LESS THAN FOUR FEET OF COVER OVER THE TOP OF A MAINLINE OR HOUSE LATERAL, CLAY PIPE WHICH IS NOT INDICATED ON THE PLANS, THE PIPE SHALL BE ENCASED PER STANDARD PLAN 208-1, CASE II, UNLESS OTHERWISE APPROVED BY THE DIRECTOR OF PUBLIC WORKS.
- ALL STRUCTURES SHALL BE EITHER BRICK SEWER MANHOLES PER STANDARD PLAN S-3 OR PRECAST CONCRETE SEWER MANHOLES PER STANDARD PLAN S-20 OR REINFORCED PRECAST CONCRETE MANHOLES PER STANDARD PLAN S-8, EXCEPT AS NOTED.
- REPLACE ALL TRENCHES WITHIN PAVED AREAS TO MEET LOS ANGELES COUNTY PUBLIC WORKS OR CALIFORNIA STATE HIGHWAY REQUIREMENTS IN ACCORDANCE WITH THE PERMITS.
- FULL COMPLIANCE WITH SECTION 208-1.3.4. OF THE STANDARD SPECIFICATIONS WILL BE REQUIRED FOR BACKFILL IN STREETS, CERTIFICATION OF BACKFILL COMPLETION, AND CERTIFICATION BY A QUALIFIED CIVIL ENGINEER SHALL BE PROVIDED BY THE CONTRACTOR.
- ALL BACKFILL AND FILLS OUTSIDE OF STREET RIGHT OF WAY SHALL BE COMPACTED TO 95% OF MAXIMUM DENSITY AS DETERMINED BY ASTM SOIL COMPACTION TEST D 1557-78 METHOD "D" UNLESS OTHERWISE SPECIFIED. THIS SHALL BE CERTIFIED BY A QUALIFIED CIVIL ENGINEER. THIS CERTIFICATION SHALL BE SUBMITTED TO THE CONSTRUCTION DIVISION OF THE DEPARTMENT OF PUBLIC WORKS PRIOR TO ACCEPTANCE OF THE WORK BY THE COUNTY.
- MANHOLE TOPS IN UNPAVED AREAS OF ANY TO BE LEVEL WITH FINISHED GRADE.
- SEWERS TO BE TESTED FOR LEAKAGE PER SECTION 208-1.4 OF THE STANDARD SPECIFICATION AND SPECIAL PROVISIONS.
- ALL WYES AND/OR HOUSE LATERALS ARE TO BE LOCATED AT LEAST FIVE FEET APART AND WHEN SPECIAL NOT CLOWER THAN FIVE FEET TO ANY MANHOLE.

PROFILE, ALIGNMENT AND GRADE OF
SANITARY SEWERS

TRACT NO. 36688 PC NO. 11424
3 SHEETS: 6 PAGES

COUNTY OF LOS ANGELES CALIFORNIA
INDEX 1216

HARRY W. STONE DIRECTOR OF PUBLIC WORKS

APPROVED BY BUILDING & SAFETY AND DEVELOPMENT DIVISION
BY *Ronald D. O'Connell* 4-6-99
ASSISTANT DIVISION ENGINEER

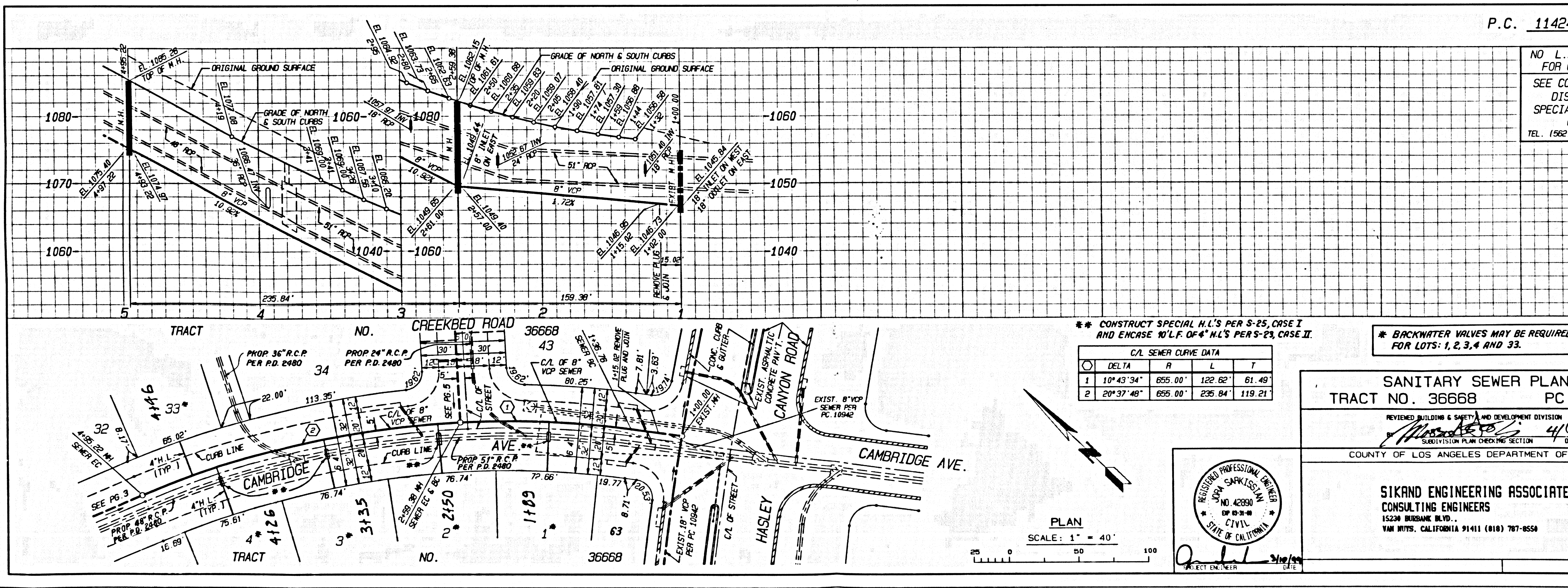
DATE: 4/6/99
SUBMITTED BY *John J. Sisk* 4/6/99
DATE: 4/6/99
SEWER PLAN CHECKING SECTION

APPROVED: COUNTY SANITATION DISTRICT
OF LOS ANGELES CALIF.
CHARLES W. CARRY - CHIEF ENGINEER AND GENERAL MANAGER
COUNTY SANITATION DISTRICT NO. 32

DATE: 4-7-1999
BY *Tracy Lopez* OFFICE ENGINEER

PRIVATE ENGINEERS NOTICE TO CONTRACTORS:
THE EXISTENCE AND LOCATION OF ANY UNDERGROUND UTILITY PIPES OR STRUCTURES SHOWN ON THESE PLANS IS REQUIRED BY A SEARCH OF THE AVAILABLE RECORDS TO THE BEST OF OUR KNOWLEDGE. THERE ARE NO EXISTING UTILITIES EXCEPT AS SHOWN ON THIS MAP. THE CONTRACTOR IS REQUIRED TO TAKE PRECAUTIONARY MEASURES TO PROTECT THE UTILITY LINES SHOWN AND ANY OTHER LINES NOT OF RECORD OR NOT SHOWN ON THIS DRAWING. PRIOR TO EXCAVATION THE CONTRACTOR SHALL CALL TOLL FREE 1-800-422-4133 TO VERIFY THE UNDERGROUND LOCATION OF GAS AND TELEPHONE LINES. THE CONTRACTOR SHALL ALSO CALL HIS OWN COMPANY OF GENERAL TELEPHONE COMPANY AT 1-805-946-8671 SO THAT THEY CAN MARK THE LOCATION OF UNDERGROUND TELEPHONE LINES.

DATE: 03/10/99
RCE NO. 42800



P.C. 11424 PAGE 2

NO L.A. CO. CHARGE FOR CONNECTION
SEE CO. SANITATION DISTRICT FOR SPECIAL CONNECTION CHARGES
TEL. (562) 859-7411 EX. 2727

CONSTRUCT SPECIAL H.L.'S PER S-25, CASE I AND ENCASE 10' L.F. OF 4\"/>

DELTA	R	L	T	
1	10'43.34'	855.00'	122.62'	61.49'
2	20'37.48'	855.00'	235.84'	119.21'

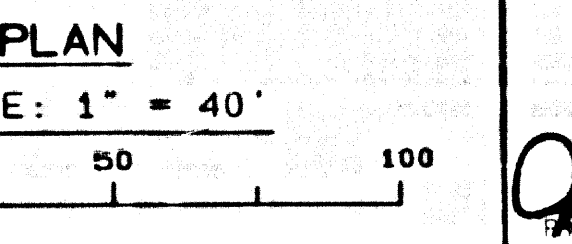
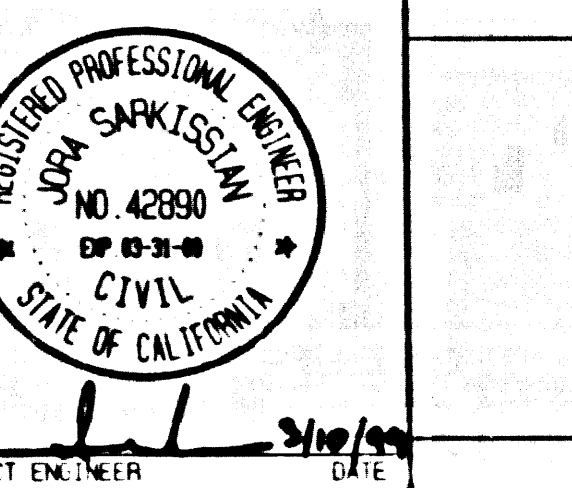
* BACKWATER VALVES MAY BE REQUIRED FOR LOTS: 1, 2, 3, 4 AND 33.

SANITARY SEWER PLANS IN
TRACT NO. 36688 PC NO. 11424

REVIEWED BY BUILDING & SAFETY AND DEVELOPMENT DIVISION
BY *John J. Sisk* 4/6/99
SEWER PLAN CHECKING SECTION

COUNTY OF LOS ANGELES DEPARTMENT OF PUBLIC WORKS

SISK AND ENGINEERS ASSOCIATES
CONSULTING ENGINEERS
15234 BURGANE BLVD.
VAN NUYS, CALIFORNIA 91411 (818) 707-8558



54692

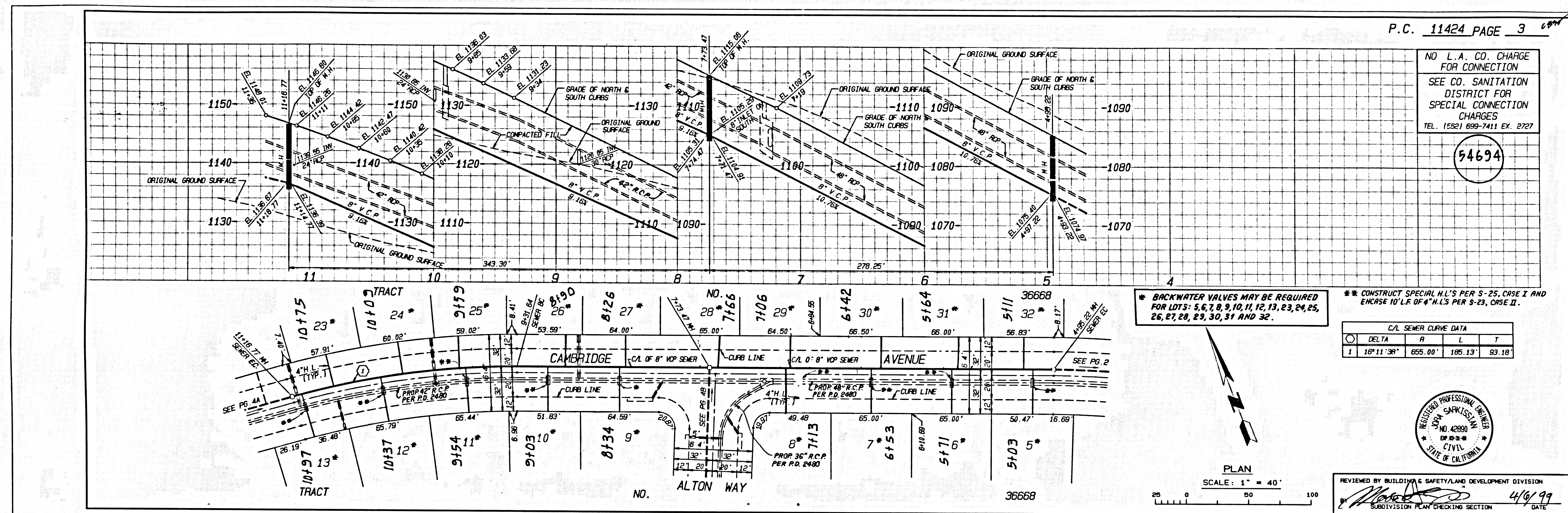
BC 11454

88888 .OM .AT

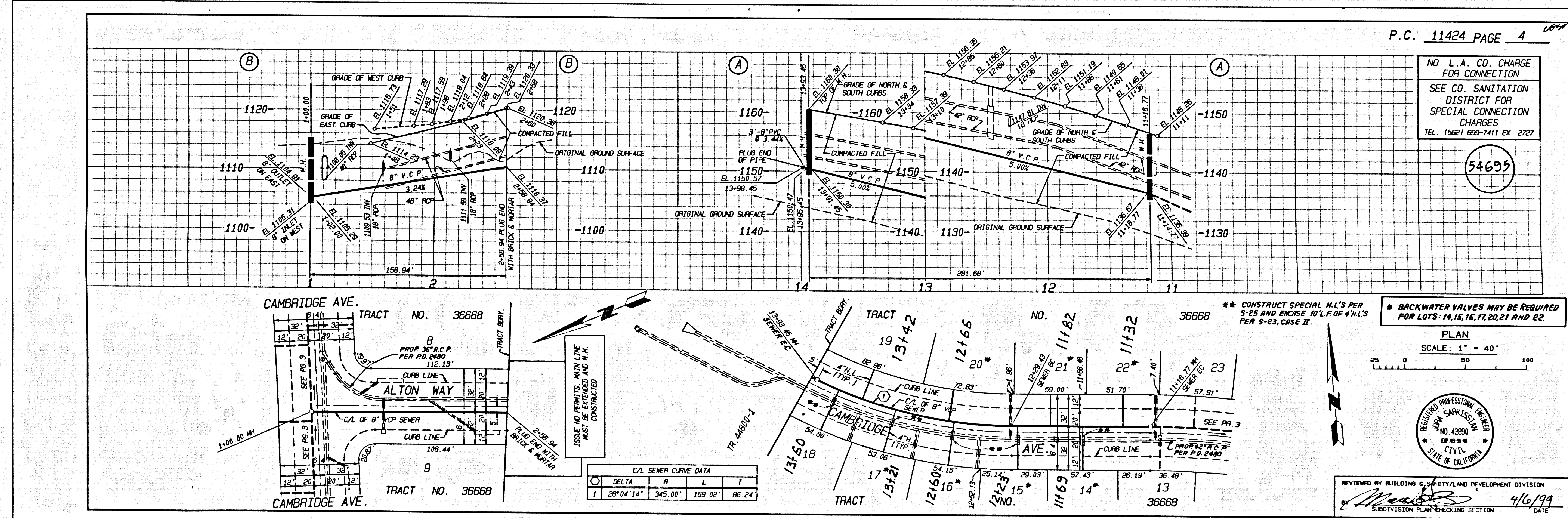
044

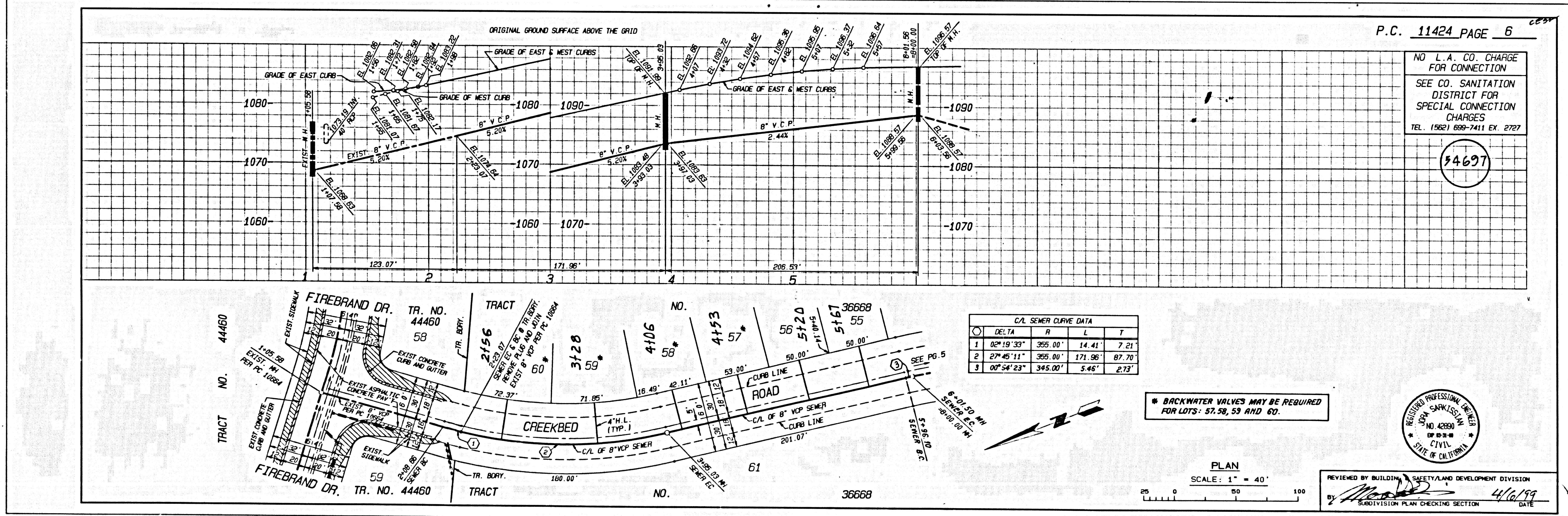
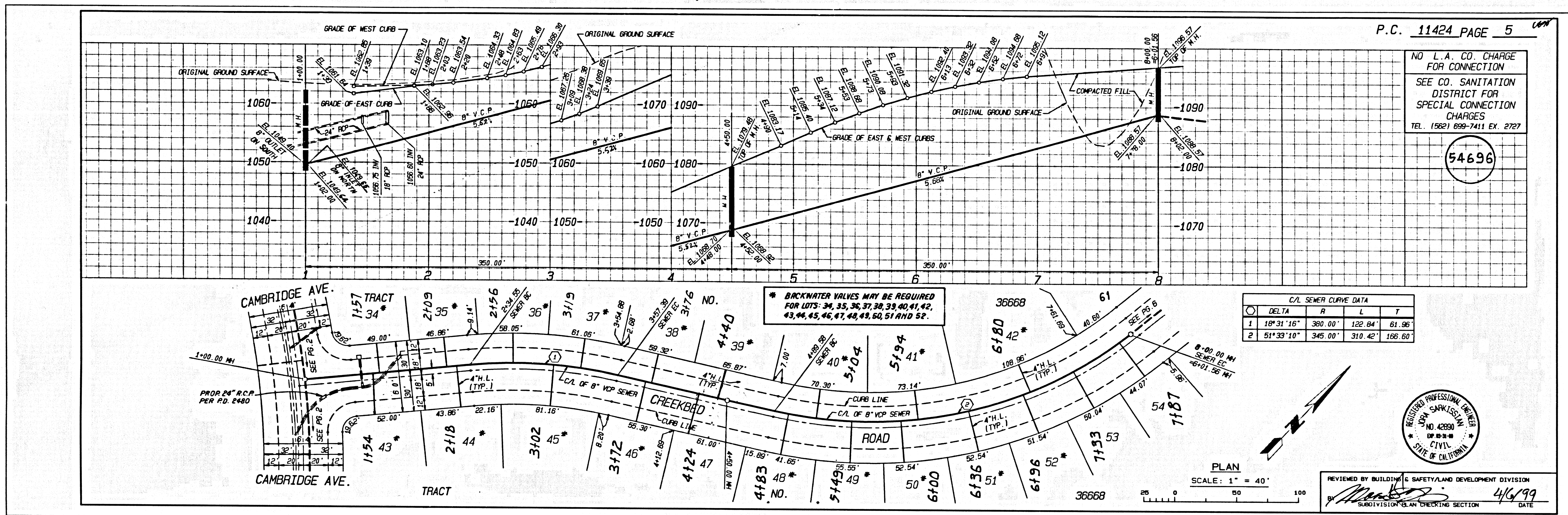
54693

044



5
 15N11 39
 8888E .0M .RT





145411 09 8888E .0M .RT