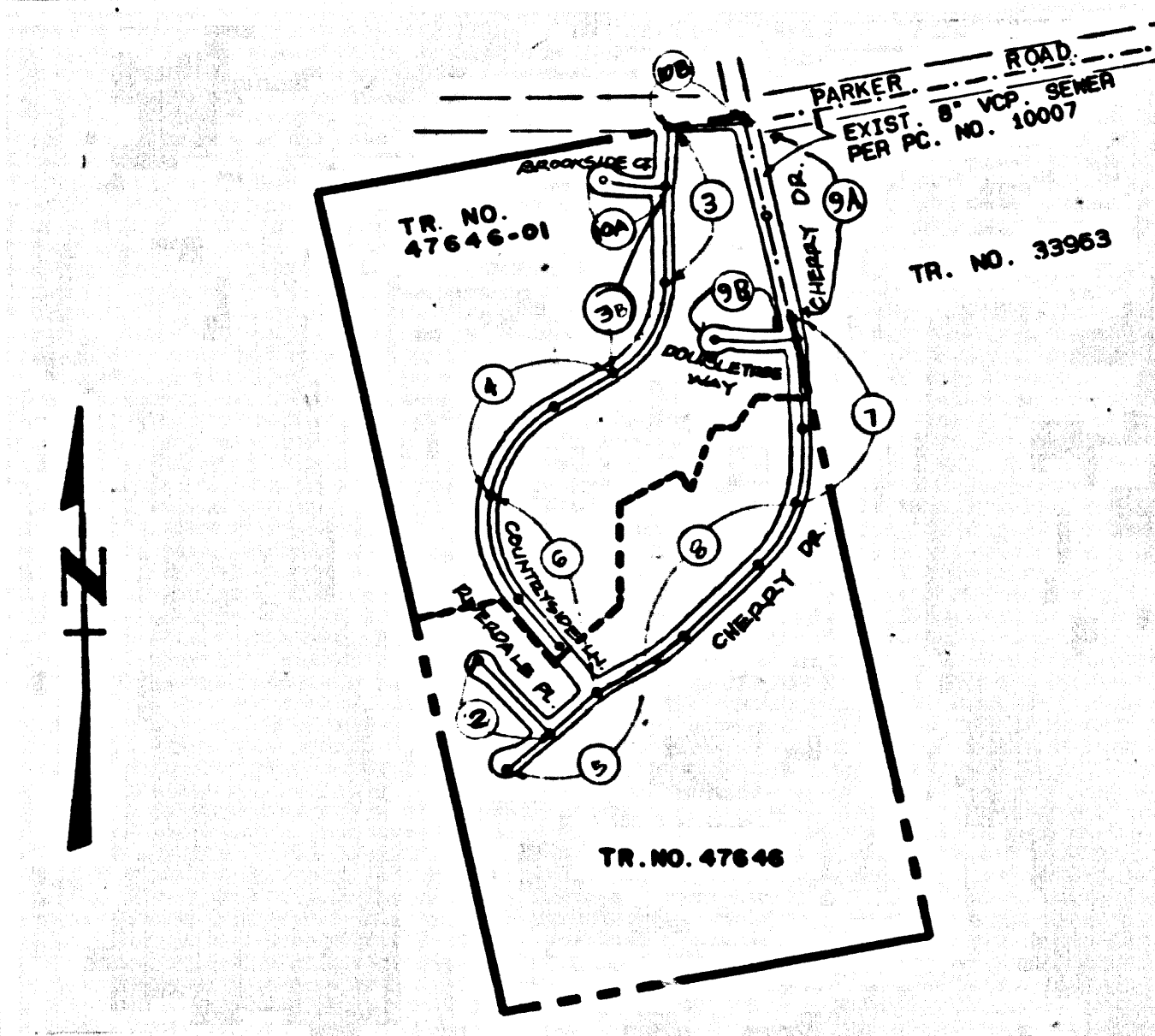


BENCH MARKS
 BM CL 3988 Elev. 1184.662
 USC & GS MON @ NW COR BRIDGE # B 1778, 17 FT N C/L
 PARKER RD & 20 FT E GOLDEN STATE FRWY, ON RAMP MKD.
 (71219 1971)
 NEWHALL QUAD 1463



KEY MAP
 SCALE 1"=600'
 TR. 47646 & 47646-01 P.C. 11433
 THOMAS GUIDE PAGE 4369 6-7
 INDEX 1214

NO.	REVISION	REVISED BY	APPROVED BY	DATE
1	LOWER SEWER MAIN TO ADD 4" SUBDRAIN ON PARSE 2-B FROM SW CORNER OF 3405-DB AND ONE CONVEY (W/E.B./ED)	Thomas G. Hahn	[Signature]	6/29/00
2	RIDGE SEWER MAIN TO ADD 8" SUBDRAIN TO THE WEST SIDE OF PARSE 2-B (W/E.B./ED)	Thomas G. Hahn	[Signature]	7/11/00
3	ADD 1" SUBDRAIN TO PARSE 2-B (W/E.B./ED)	Thomas G. Hahn	[Signature]	7/11/00

STORMWATER POLLUTION CONTROL REQUIREMENTS FOR SEWER CONSTRUCTION

- Eroded sediments and other pollutants must be retained on site and may not be transported from the site via street flow, wind, or other natural drainage courses, or wind.
 - Stabilizes of earth and other construction related materials must be protected from being transported from the site by the forces of wind or water.
 - Fuels, oils, solvents, and other toxic materials must be stored in accordance with their listing and are not to contaminate the soil and surface waters. All approved storage containers are to be protected from the weather. Spills must be cleaned up immediately and disposed of in a proper manner. Spills may not be washed into the drainage system.
 - Excess or waste concrete may not be tracked from the site by vehicle traffic. The construction entrance roadways must be stabilized so as to inhibit sediments from being deposited into the public way. Accidental depositions must be swept up immediately and may not be washed down by rain or other means.
 - Any slopes with disturbed soils or denuded vegetation must be stabilized so as to inhibit erosion by wind and water.
- CAUTIONS - DEWATERING OPERATIONS AND PAINTING**
 CA001 - PAINTING OPERATIONS
 CA002 - STRUCTURE CONSTRUCTION AND PAINTING
 CA010 - MATERIAL DELIVERY AND STORAGE
 CA020 - SOLID WASTE MANAGEMENT
 CA025 - HAZARDOUS WASTE MANAGEMENT
 CA030 - CONCRETE WASTE MANAGEMENT
 CA035 - SANITARY/SPECIFIC WASTE MANAGEMENT
 CA040 - VEHICLE AND EQUIPMENT CLEANING
 CA045 - VEHICLE AND EQUIPMENT MAINTENANCE
 CA050 - SCHEDULING
 CA055 - PRESERVATION OF EXISTING VEGETATION
- ESCORTS - SEEDING AND PLANTING**
 ESC10 - SEEDING AND PLANTING
 ESC20 - GEOTEXTILES AND MATS
 ESC30 - DUST CONTROLS
 ESC40 - TEMPORARY STREAM CROSSING
 ESC50 - CONSTRUCTION ROAD STABILIZATION
 ESC60 - STABILIZED CONSTRUCTION ENTRANCE
 ESC70 - STORM DRAIN INLET PROTECTION
- STANDARD PLANS:**
 THE FOLLOWING LATEST REVISED STANDARD PLANS ON FILE IN THE OFFICE OF THE FOLLOWING DEPARTMENT SHALL APPLY IN THE CONSTRUCTION OF THIS PROJECT.
 LOS ANGELES COUNTY DEPARTMENT OF PUBLIC WORKS
- APWA 208-D BREAKING INTO EXISTING MANHOLES
 APWA 222-D HOUSE CONNECTION SEWER
 APWA 223-D HOUSE CONNECTION REMODELING
 APWA 224-D LEGION FOR SANITARY SEWER PLANS AND PROFILES AND DISTRICT MAPS
 2000-D BEDDING FOR SEWER PIPE
 2021-D WYE ORTEE JOINTS
 2024-D ALLOWABLE TRENCH WIDTHS
 2025-D SADDLES FOR HOUSE LATERALS
 2028-D CREEPERS AND ENGAGEMENT
- NO CONNECTION FOR THE DISPOSAL OF INDUSTRIAL WASTES SHALL BE MADE TO SEWERS SHOWN ON THESE DRAWINGS UNTIL A PERMIT FOR INDUSTRIAL WASTEWATER DISCHARGE HAS BEEN ISSUED BY THE SANITATION DISTRICT FOR SAID CONNECTION.**
- BEFORE BREAKING INTO OR CONSTRUCTION ON A COUNTY SANITATION DISTRICT SEWER AND PRIOR TO FINAL ACCEPTANCE OF THE PROJECT, SANITATION DISTRICT INSPECTOR SHALL BE NOTIFIED BY PHONE (661) 266-4683 SO THAT REQUIRED INSPECTION CAN BE MADE.**

DOUBLE SCALE

PRIVATE CONTRACT SEWER GENERAL NOTES

- The following general notes are to be included on Page 1 of all Private Contract Sewer Plans:
- A sewer construction permit shall be obtained and a fee paid for construction inspection and record plans to the Department of Public Works at the Permit Counter, 900 South Fremont Avenue, 8th Floor, Anaheim, CA 92801, 72 hours prior to starting work under this permit. Copies of all other required permits, such as Flood Escavation, Contractors, etc., must be filed with the permit application.
 - Prior to issuance of any permit, the contractor shall file a permit for excavations and trenches from the State of California Division of Industrial Safety and a Certificate of Worker's Compensation Insurance with the Department of Public Works on the Certificate holder to be notified 30 days prior to **CANCELLATION OF POLICY**.
 - If work is done in a State Highway, a permit must be obtained from the State of California Division of Highways, 120 South Spring Street, Los Angeles, California.
 - When work is within a contract city, the contractor must contact the Director of Public Works of that city, to determine the location to pay the inspection fee.
 - The contractor shall contact the district office listed on the "Application for Construction Permit" to arrange for an acceptable construction start date.
 - Approval of this plan by the County of Los Angeles does not constitute a representation as to accuracy of the location of or the existence or non-existence of any underground utility pipe or structure within the limits of the project. This note applies to all pipes.
 - All work shall be in accordance with the latest approved edition of the "Standard Specifications for Public Works Construction, including supplements and the latest Special Provisions for the Construction of Sanitary Sewers and shall be preserved only in the presence of the Department of Public Works.
 - The contractor's attention is directed to Section 7-10.4.1 of the Standard Specifications for Public Works Construction in regard to safety orders and shall conform to the "Minimum Public Safety Requirements" as shown on Los Angeles Department of Public Works' Standard S-2.
 - Erections are in feet above U.S.C. & G.S. sea level datum of 1929.
 - No relocations shall be made in these plans without the approval of the Director of Public Works.
 - No representative of the Department of Public Works will survey or lay out any portion of the work.
 - Grades to which this improvement is to be constructed are shown on plans and profiles. Grade points for top of curbs, centerlines of streets, or centerlines of alleys, are shown by circles on profiles at all points between designated points. The grade shall be established so as to conform to a straight line drawn between said designated points.
 - The private engineer shall furnish the Department of Public Works with grade sheets and stationing for all house laterals and "Y" or "T" branches and shall provide stakes for them at their proper locations with stationing plainly marked. All house laterals shall be constructed in a straight alignment at right angles from the main line sewer except as shown on the plans. House laterals from chimneys shall not have an angle of less than 45 degrees with the M.L. sewer. Any change in alignment shall be requested in writing by the private engineer.
 - The private engineer shall furnish the house lateral depth at the property line below the top of curb elevation for each house lateral on the grade sheet.
- CONSTRUCTION NOTES**
- Provide survey stakes on the property line or property lines produced at right angles to the sewer line at the centerline of each manhole.
 - Verified clay pipe joints shall be type "D" or "C" per standard specifications section 208-2.
 - If a manhole is within three feet of the sewer, the sewer shall be encased per standard plan S-23, case II, two feet on each side from the point of interference.
 - All joints between cast iron pipe and vitrified clay shall be made with a rubber sleeve joint, type "D" (with bushing if necessary) per standard specifications section 208-2.
 - House laterals to be constructed with inverts of the property line 6 feet below curb grade except as noted.
 - Wye or tee branches may be used for connections to the mainline sewers except as noted.
 - If during the course of construction, it is determined that there is less than four feet of cover over the top of a manhole or house lateral V.C.P. sewer which is not indicated on the plans, the pipes shall be encased per standard plan S-23, case II, unless otherwise approved by the Director of Public Works.
 - All structures shall be either brick sewer manholes per standard plan S-3 or precast concrete sewer manholes per standard plan S-36, or reinforced precast concrete manholes per standard plan S-3, except as noted.
 - Reinforce all trenches within paved areas to meet Los Angeles County Public Works or California State Highway requirements in accordance with the permits.
 - Full compliance with section 308-1.3.4. of the standard specification will be required for backfill in street certification of backfill compaction and sand equivalent by a qualified civil engineer shall be provided by the permittee prior to the issuance of a certificate of partial acceptance.
 - All backfill and fills outside of the street right of way shall be compacted to 90% of the maximum density as determined by ASTM soil compaction test D 1557-78 method "D" unless otherwise specified. This shall be certified by a qualified civil engineer. This certification shall be submitted to the Construction Division of the Department of Public Works prior to the acceptance of the work by the county.
 - Manhole tops in unimproved rights of way to be six inches above finished grade.
 - Sewers to be tested for leakage per section 306-1.4 of the standard specifications and special provisions.

PROFILE, ALIGNMENT AND GRADE OF SANITARY SEWERS TO BE CONSTRUCTED IN

TRACT NO. 47646, 47646-01 PC NO. 11433
 5 SHEETS: 10 PAGES
 COUNTY OF LOS ANGELES CALIFORNIA
 INDEX 1214

HARRY W. STONE, DIRECTOR OF PUBLIC WORKS
 (Seal) 55735
 APPROVED BY: [Signature] LAND DEVELOPMENT DIVISION
 DATE: 2-1-00
 SUBMITTED BY: [Signature] SUBDIVISION PLAN CHECKING SECTION
 DATE:

APPROVED: COUNTY SANITATION DISTRICT
 OF LOS ANGELES CALIF.
 CHARLES W. CARRY - CHIEF ENGINEER AND GENERAL MANAGER
 COUNTY SANITATION DISTRICT NO. 32

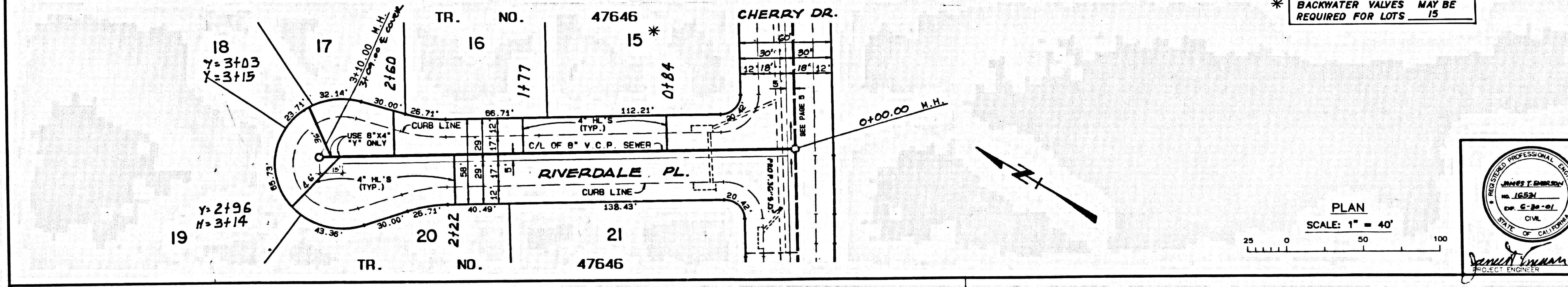
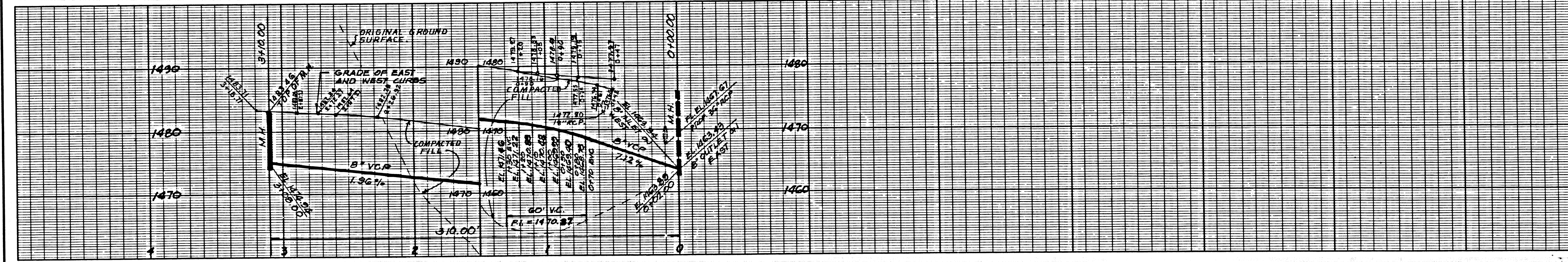
BY: [Signature] DATE: 2-29-2000
 OFFICE ENGINEER
 SANTA CLARA ENGRS. DATE: 8-20

PRIVATE ENGINEERS NOTICE TO CONTRACTORS:

THE EXISTENCE AND LOCATION OF ANY UNDERGROUND UTILITY PIPES OR STRUCTURES SHOWN ON THESE PLANS IS REQUIRED BY A SEARCH OF AVAILABLE RECORDS TO THE BEST OF OUR KNOWLEDGE. THERE ARE NO EXISTING UTILITIES EXCEPT AS SHOWN ON THIS MAP. THE CONTRACTOR IS REQUIRED TO TAKE PRECAUTIONARY MEASURES TO PROTECT THE UTILITY LINES SHOWN AND ANY OTHER LINES NOT OF RECORD OR NOT SHOWN ON THIS DRAWING. PRIOR TO EXCAVATION THE CONTRACTOR SHALL CALL TOLL FREE 1-800-422-4133 TO VERIFY THE UNDERGROUND LOCATION OF GAS AND TELEPHONE LINES. THE CONTRACTOR SHALL ALSO CALL MR. RAY DUMMINGS OF GENERAL TELEPHONE COMPANY AT 1-800-548-4870, SO THAT THEY CAN MARK THE LOCATION OF UNDERGROUND TELEPHONE LINES.
 [Signature] 12/13/99
 RCE NO. 16531

P.C. 11433 PAGE 2

NO L.A. COUNTY CHARGES FOR CONNECTIONS
 SEE CO. SANITATION DISTRICT FOR SPECIAL CONNECTION CHARGES
 TEL. (842) 699-7411 EX. 2727
 DOUBLE SCALE
 (Seal) 55735

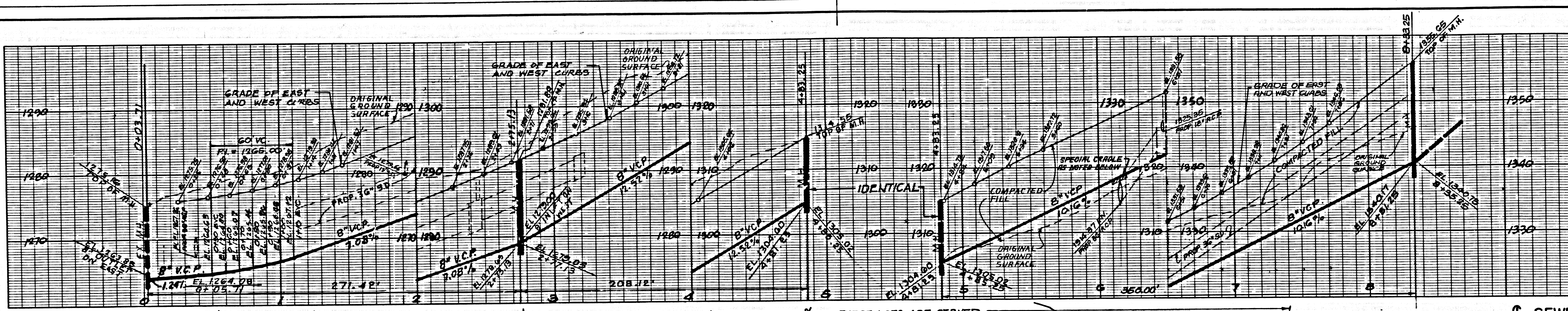


* BACKWATER VALVES MAY BE REQUIRED FOR LOTS 15

SANITARY SEWER PLANS IN TRACT NO. 47646, 47646-01 PC NO. 11433
 REVISED BY: [Signature] LAND DEVELOPMENT DIVISION
 DATE: 1/21/2000
 SUBDIVISION PLAN CHECKING SECTION
 COUNTY OF LOS ANGELES DEPARTMENT OF PUBLIC WORKS

B & E ENGINEERS
 CIVIL ENGINEERING SURVEYING LAND PLANNING
 24 W. ST. JOSEPH ST.
 ARCADIA, CA 91707
 628-446-4444
 628-446-6566 (fax)

DATE: 5/97



P.C. 11433 PAGE 3

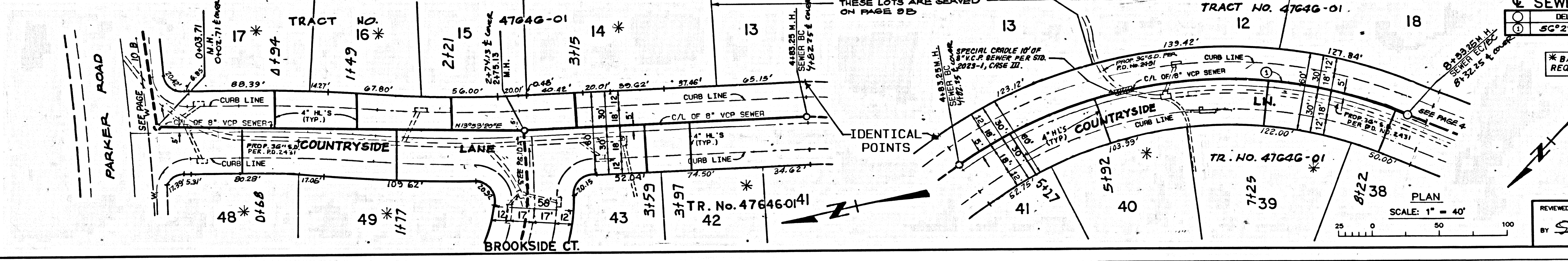
NO L.A. COUNTY CHARGES FOR CONNECTIONS

SEE CO. SANITATION DISTRICT FOR SPECIAL CONNECTION CHARGES

TEL. (562) 899-7411 EX. 2727

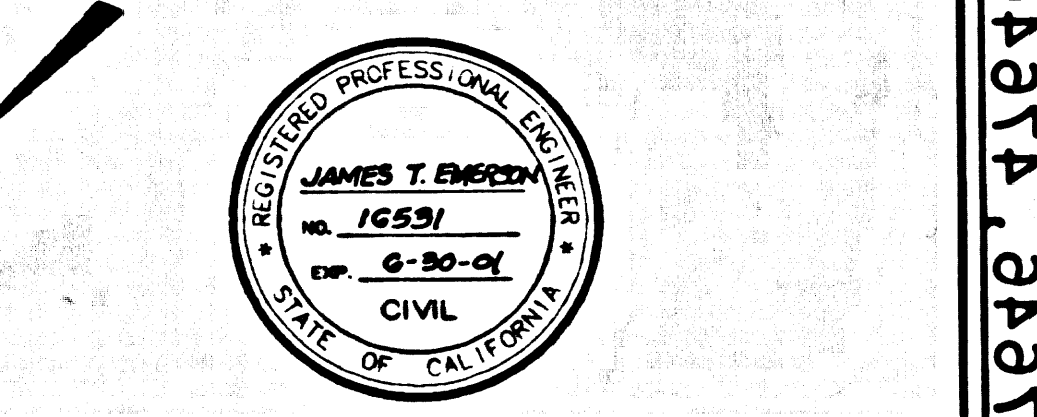
DOUBLE SCALE

55731

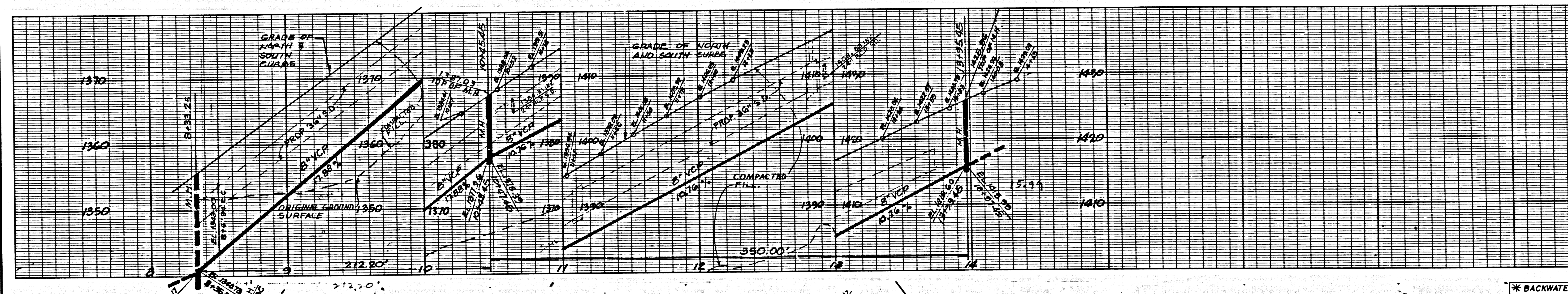


SEWER CURVE DATA

* BACKWATER VALVES MAY BE REQUIRED FOR LOTS 14, 16, 17, 39, 40, 42, 49, 50



REVIEWED BY: *Sam G. Galis* LAND DEVELOPMENT DIVISION
 BY: *Sam G. Galis* SUPERVISOR PLAN CHECKING SECTION 1/27/2000 DATE



P.C. 11433 PAGE 4

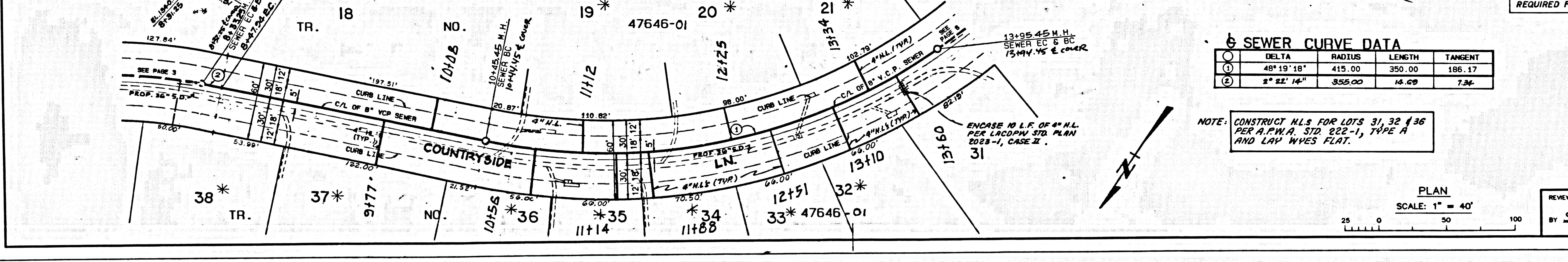
NO L.A. COUNTY CHARGES FOR CONNECTIONS

SEE CO. SANITATION DISTRICT FOR SPECIAL CONNECTION CHARGES

TEL. (562) 899-7411 EX. 2727

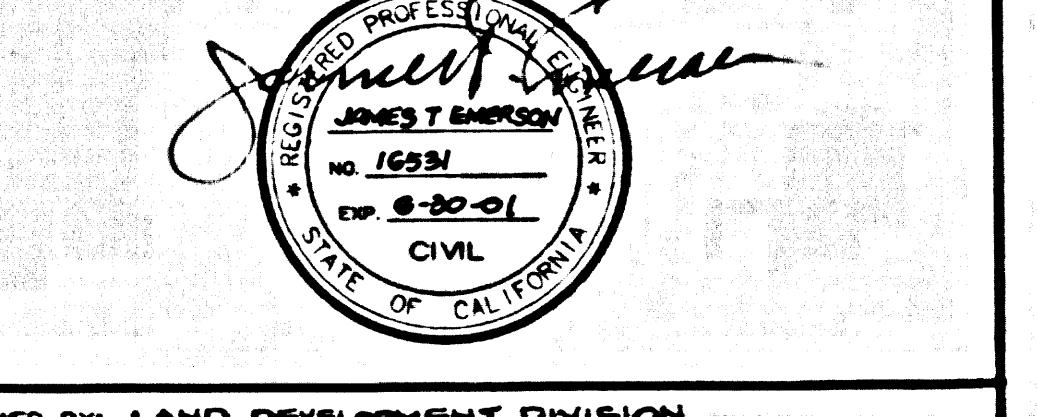
DOUBLE SCALE

55732



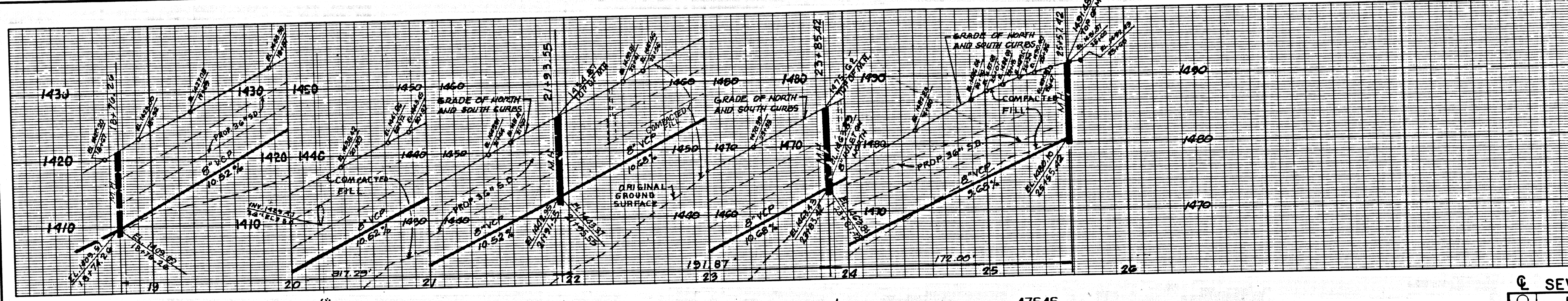
SEWER CURVE DATA

* BACKWATER VALVES MAY BE REQUIRED FOR LOTS 19, 20, 21, 32 THRU 38



REVIEWED BY: *Sam G. Galis* LAND DEVELOPMENT DIVISION
 BY: *Sam G. Galis* SUPERVISOR PLAN CHECKING SECTION 1/27/2000 DATE

10-24374-24374-AT

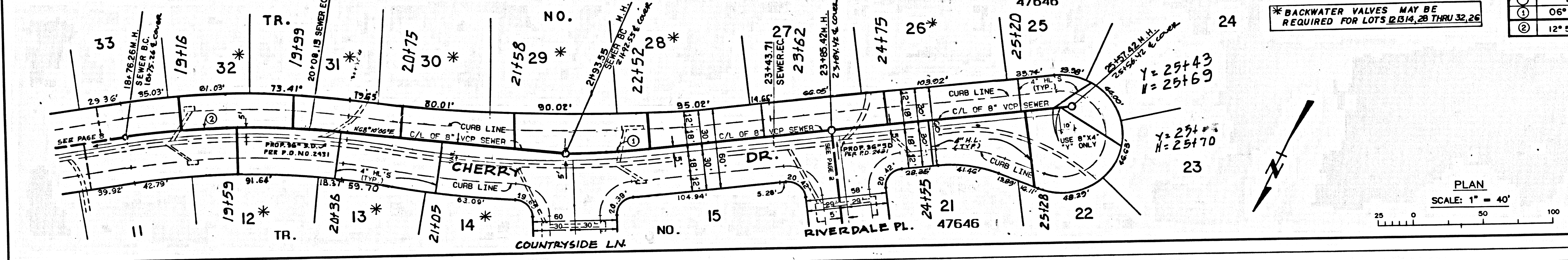


NO L.A. COUNTY CHARGES FOR CONNECTIONS
 SEE CO. SANITATION DISTRICT FOR SPECIAL CONNECTION CHARGES
 TEL. (562) 699-7411 EX. 2727
 DOUBLE SCALE

55737

SEWER CURVE DATA

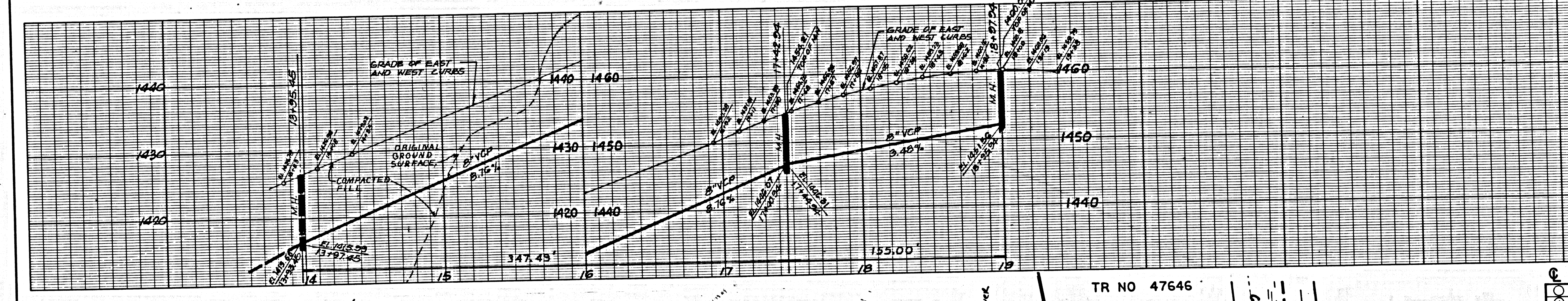
DELTA	RADIUS	LENGTH	TANGENT
06° 23' 49"	1345.00	150.16	75.16
12° 54' 55"	585.00	131.87	66.21



* BACKWATER VALVES MAY BE REQUIRED FOR LOTS 23, 24, 25, 26, 27, 28, 29, 30, 31, 32, 33

PLAN
 SCALE: 1" = 40'

REVIEWED BY: *Sammy G. Habes* LAND DEVELOPMENT DIVISION
 SUBDIVISION PLAN CHECKING SECTION DATE: 1/27/2000

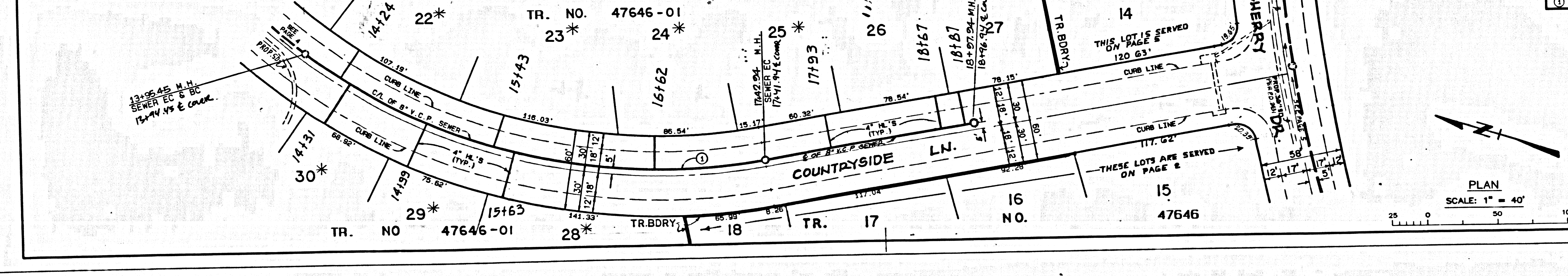


NO L.A. COUNTY CHARGES FOR CONNECTIONS
 SEE CO. SANITATION DISTRICT FOR SPECIAL CONNECTION CHARGES
 TEL. (562) 699-7411 EX. 2727
 DOUBLE SCALE

55740

SEWER CURVE DATA

DELTA	RADIUS	LENGTH	TANGENT
48° 15' 34"	415.00	347.49	184.80



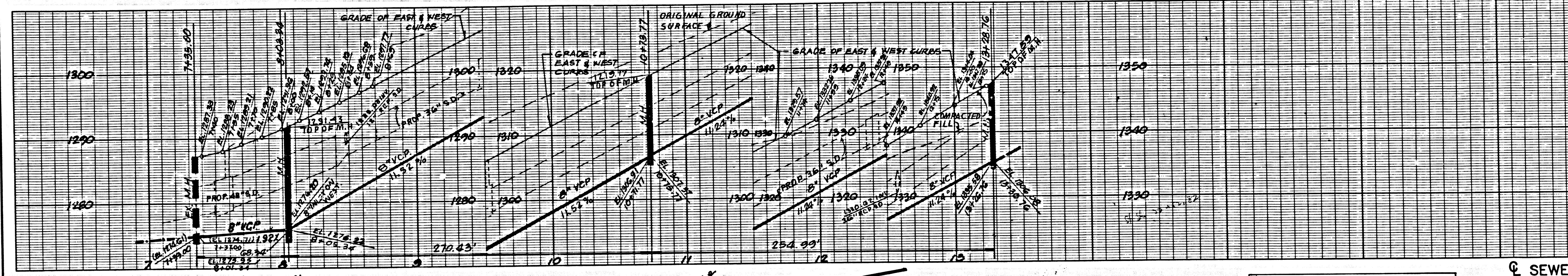
* BACKWATER VALVES MAY BE REQUIRED FOR LOTS 25, 26, 28, 29, 30

PLAN
 SCALE: 1" = 40'

REVIEWED BY: *Sammy G. Habes* LAND DEVELOPMENT DIVISION
 SUBDIVISION PLAN CHECKING SECTION DATE: 1/27/2000

10-24374-28274-RT

2311-3C

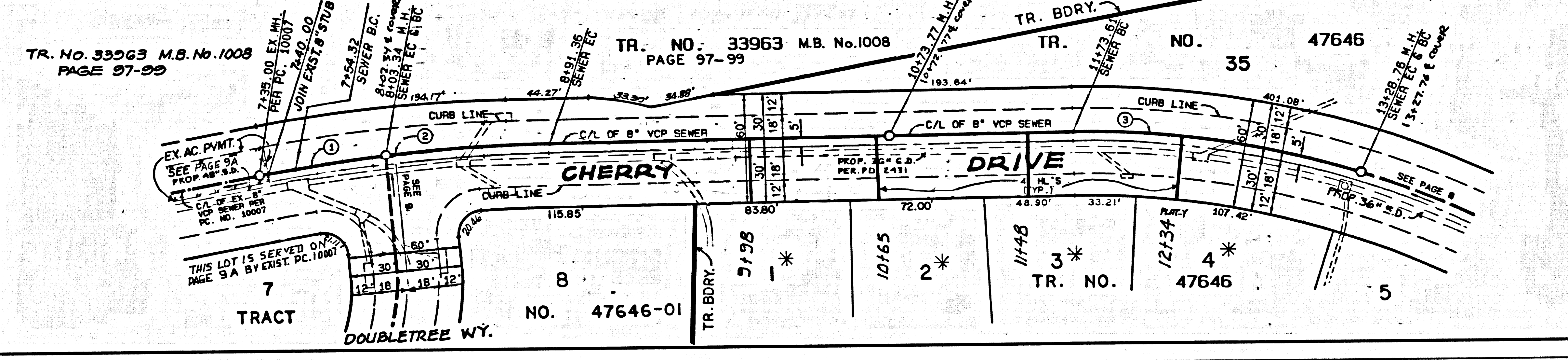


NO L.A. COUNTY CHARGES FOR CONNECTIONS

SEE CO. SANITATION DISTRICT FOR SPECIAL CONNECTION CHARGES
TEL. (62) 699-7411 EX. 2727

DOUBLE SCALE.

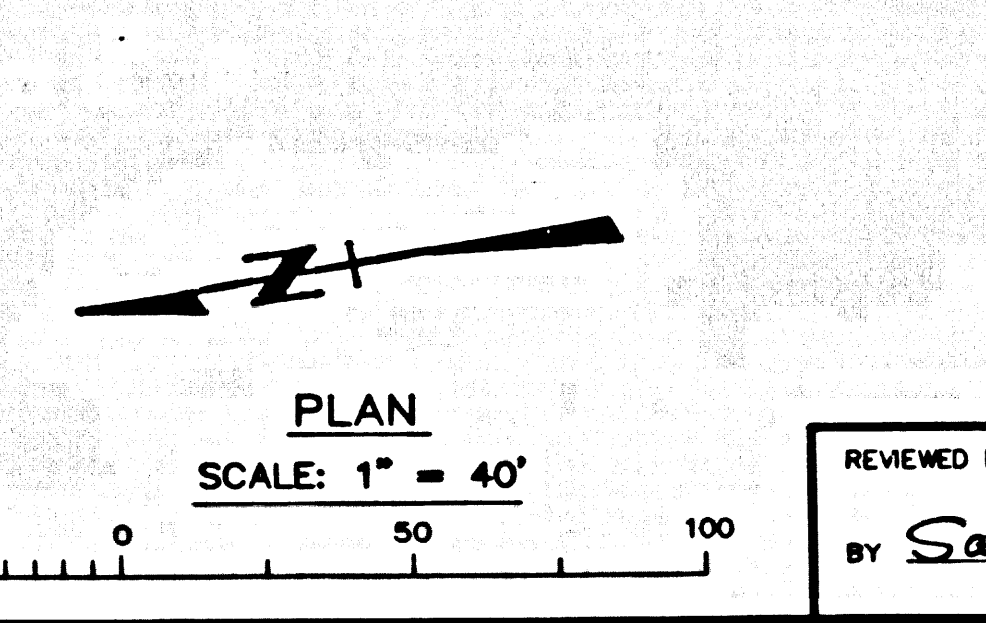
55741



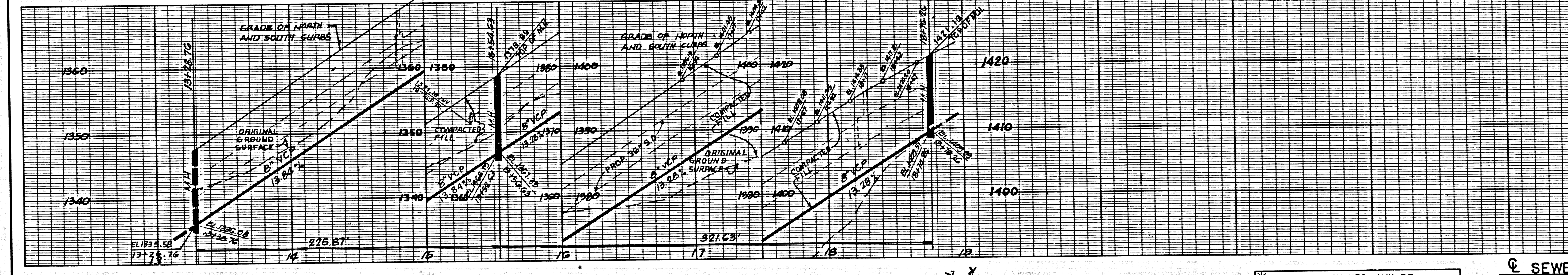
* BACKWATER VALVES MAY BE REQUIRED FOR LOTS 1 THRU 4

SEWER CURVE DATA

DELTA/BEARING	RADIUS	LEN./DIST.	TANGENT
3° 19' 26"	845.00	49.02	24.52
5° 58' 06"	845.00	86.02	44.05
18° 42' 56"	475.00	155.15	78.28



REVIEWED BY: LAND DEVELOPMENT DIVISION
BY: *Sanjay G. Balis* 1/21/2000
SUBMISSION PLAN CHECKING SECTION DATE

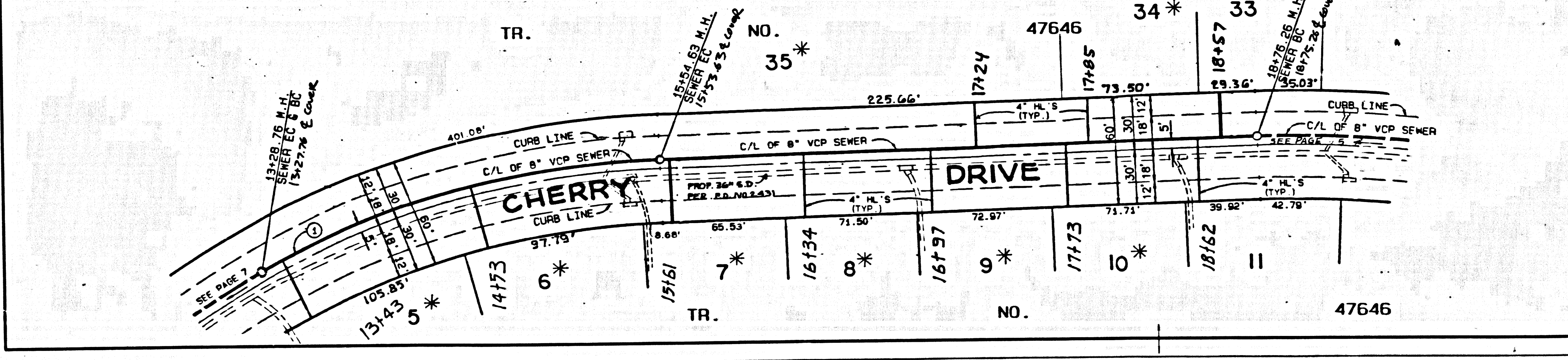


NO L.A. COUNTY CHARGES FOR CONNECTIONS

SEE CO. SANITATION DISTRICT FOR SPECIAL CONNECTION CHARGES
TEL. (62) 699-7411 EX. 2727

DOUBLE SCALE.

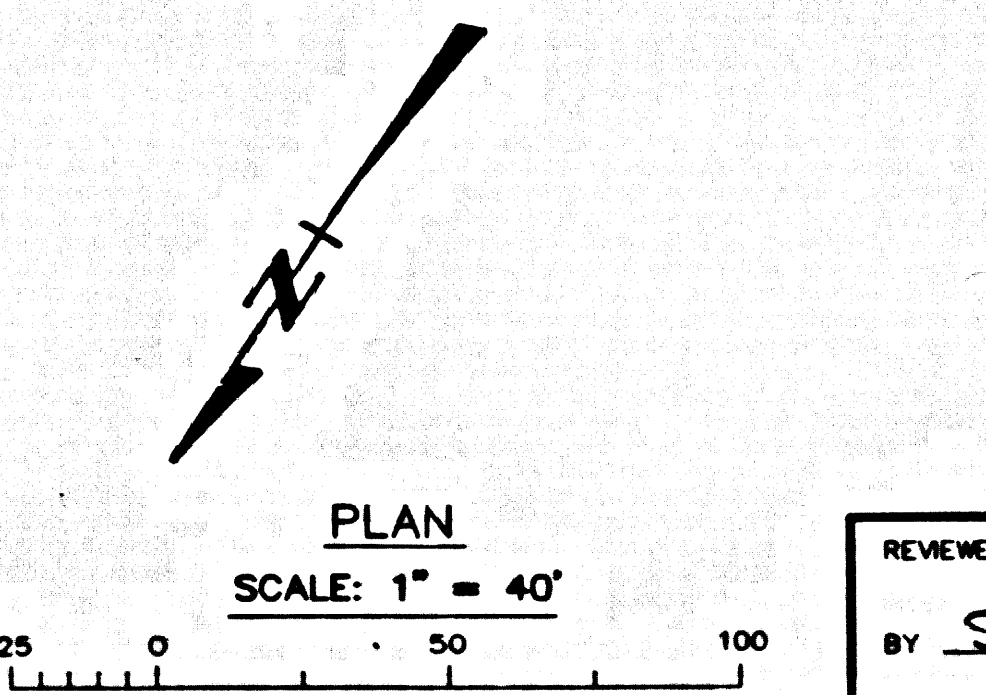
55742



* BACKWATER VALVES MAY BE REQUIRED FOR LOTS 8 THRU 10, 34, 35

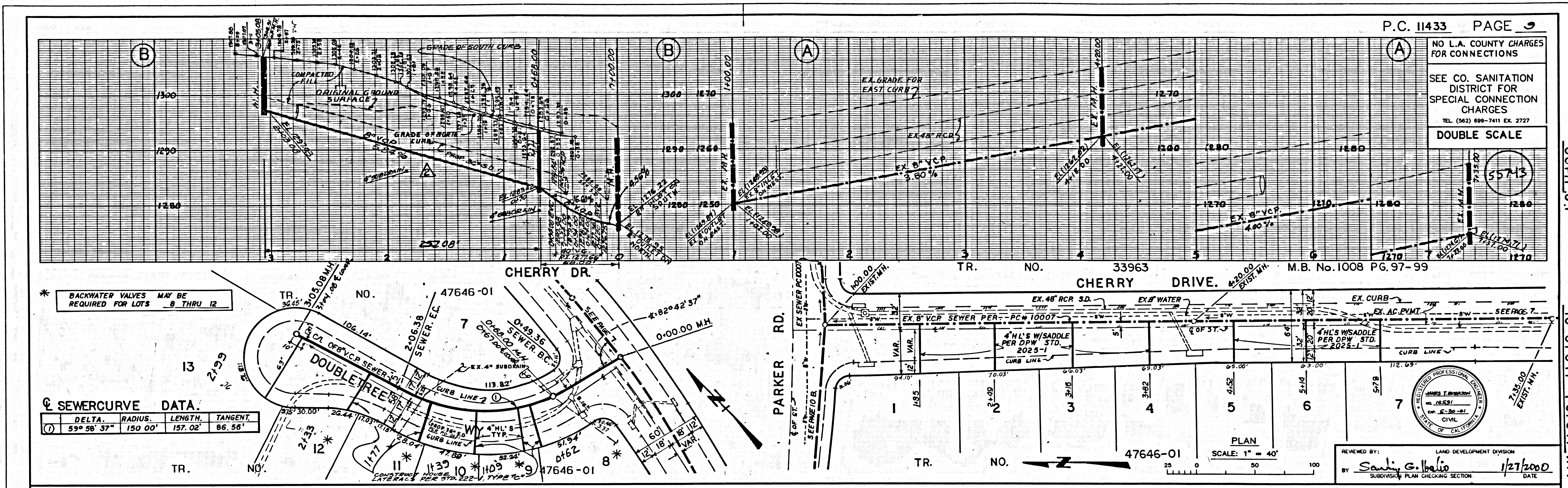
SEWER CURVE DATA

DELTA	RADIUS	LENGTH	TANGENT
27° 14' 43"	475.00	225.87	115.11



REVIEWED BY: LAND DEVELOPMENT DIVISION
BY: *Sanjay G. Balis* 1/21/2000
SUBMISSION PLAN CHECKING SECTION DATE

10-24874, 24874, 91



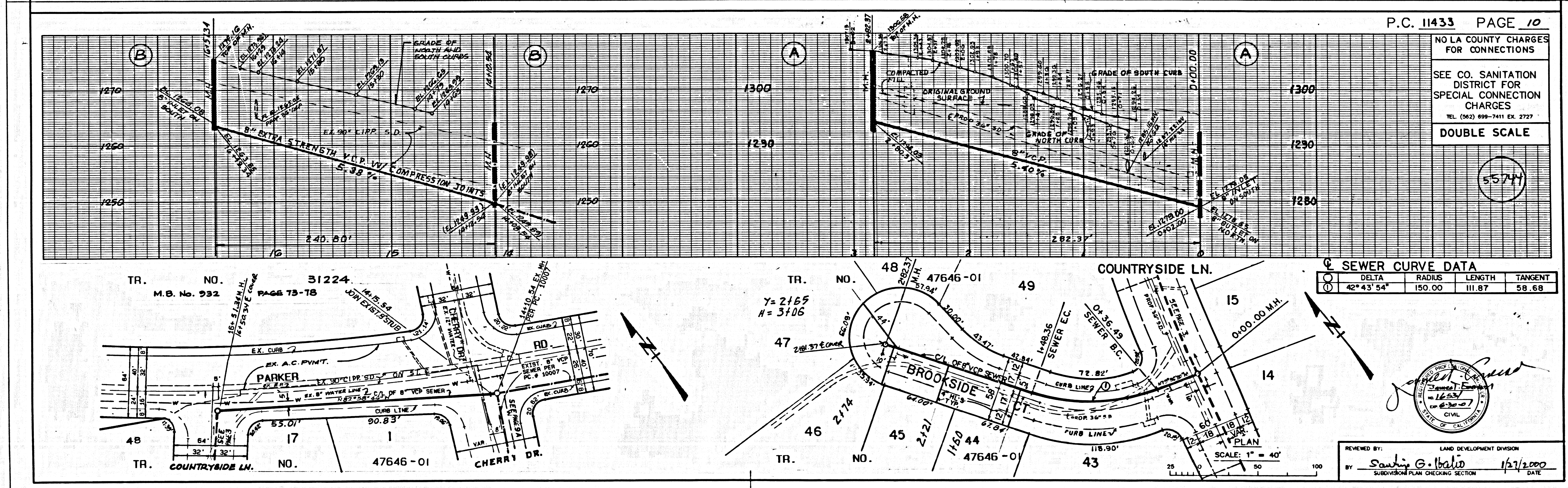
P.C. 11433 PAGE 9
 NO L.A. COUNTY CHARGES FOR CONNECTIONS
 SEE CO. SANITATION DISTRICT FOR SPECIAL CONNECTION CHARGES
 TEL. (562) 699-7411 EX. 2727
 DOUBLE SCALE

* BACKWATER VALVES MAY BE REQUIRED FOR LOTS 8 THRU 12

SEWER CURVE DATA

DELTA	RADIUS	LENGTH	TANGENT
59° 56' 37"	150.00'	137.02'	86.56'

REVIEWED BY: LAND DEVELOPMENT DIVISION
 BY: *Sandy G. Baldo* 1/27/2000
 SUBDIVISION PLAN CHECKING SECTION DATE



P.C. 11433 PAGE 10
 NO L.A. COUNTY CHARGES FOR CONNECTIONS
 SEE CO. SANITATION DISTRICT FOR SPECIAL CONNECTION CHARGES
 TEL. (562) 699-7411 EX. 2727
 DOUBLE SCALE

SEWER CURVE DATA

DELTA	RADIUS	LENGTH	TANGENT
42° 43' 54"	150.00'	111.87'	58.68'

REVIEWED BY: LAND DEVELOPMENT DIVISION
 BY: *Sandy G. Baldo* 1/27/2000
 SUBDIVISION PLAN CHECKING SECTION DATE

P.C. 11433

P.C. 11433