

B.M. L 5292 ELEV. 1342.692  
 DPM ON TAG IN N COR SFT END BOX & NE COR  
 SECO C/W RD & CORNER HILL DR 70FT E & SEFT  
 N/O CL INT (W END CS)

NEW-HALL QUAD 19.93

NO CONNECTION FOR THE DISPOSAL OF INDUSTRIAL WASTES SHALL BE MADE TO SEWER  
 SHOWN ON THESE DRAWINGS UNTIL A PERMIT FOR INDUSTRIAL WASTE DISCHARGE  
 AS BEEN ISSUED BY THE SANITATION DISTRICTS FOR SAID CONNECTIONS.

BEFORE BREAKING INTO OR CONSTRUCTION ON A COUNTY SANITATION DISTRICT SEWER  
 AND PRIOR TO FINAL ACCEPTANCE OF THE PROJECT, A SANITATION DISTRICT INSPECTOR  
 SHALL BE NOTIFIED BY PHONE AT (800) 266-4863, SO THAT REQUIRED INSPECTIONS CAN BE MADE.

FOR SEWER CONSTRUCTION

- Erosion estimates and other pollutants must be retained on site and may not be transported from the site via sheetflow, erosion, area drains, natural drainage courses or wind.
- Stockpiles of earth and other construction related materials must be protected from being transported from the site by the forces of wind or water.
- Rails, stils, activities and other waste materials must be stored in accordance with their listing and are not to contaminate the soil and surface waters. All exposed surfaces shall be protected from the weather. Soils must be cleaned up immediately and disposed of in a proper manner. Soils may not be washed into the drainage system.
- Excess or waste concrete may not be cleaned into the public way or any other drainage system. Provisions shall be made to retain concrete waste on site until they can be disposed of as solid waste.
- Trench and construction related solid wastes must be deposited into a covered receptacle to prevent contamination of rainwater and dispersed by wind.
- Residues and other materials may not be tracked from the site by vehicle traffic. The construction entrance roadway must be established so as to inhibit sediments from being deposited into the public way. Accidental spills must be swept up immediately and may not be washed down by rain or other means.
- Any slopes with disturbed soils or ground of vegetation must be stabilized so as to inhibit erosion by wind and water.

The following BMPs are outlined in, but not limited to, the Best Management Practices Handbook, California Erosion Control Task Force, September, California, 1993, or the latest revised edition may apply during construction (additional measures may be required if deemed appropriate by County).

CA301 - Dewatering Operations  
 CA311 - Private Construction and Painting  
 CA312 - Material Delivery and Storage  
 CA313 - Soil to Waste Management  
 CA314 - Household Waste Management  
 CA315 - Concrete Waste Management  
 CA316 - Sanitary/Sewer Waste Management  
 CA317 - Vehicle and Equipment Washing  
 CA318 - Vehicle and Equipment Maintenance  
 CA319 - Scheduling  
 CA320 - Preservation of Existing Vegetation

ESC10 - SEEDING AND PLANTING  
 ESC11 - MULCHING  
 ESC20 - BEDDING AND MATS  
 ESC21 - SOIL CONTROLS  
 ESC22 - TEMPORARY STREAM CROSSING  
 ESC23 - CONSTRUCTION ROAD STABILIZATION  
 ESC24 - STABILIZED CONSTRUCTION ENTRANCE  
 ESC25 - STORM DRAIN INLET PROTECTION

STANDARD PLANS:  
 THE FOLLOWING LATEST REVISED STANDARD PLANS ON FILE IN THE OFFICE OF THE FOLLOWING APPLY IN THE CONSTRUCTION OF THIS PROJECT:

LOS ANGELES COUNTY DEPARTMENT OF PUBLIC WORKS  
 LPA 200-8 BREAKING INTO EXISTING MANHOLES  
 LPA 200-9 HOUSE CONNECTION SEWER  
 LPA 200-10 HOUSE CONNECTION MANHOLE  
 LPA 200-11 NON-IMPREGATED PRECAST CONCRETE MANHOLE  
 LPA 200-12 MANHOLE PROTECTION FOR PIPES  
 2000-4 BEDDING FOR SANITARY SEWER PLANS AND PROFILES AND DISTRICT MAPS.  
 2001-4 USE OF THE SUPPORT  
 2002-7 ALLOWABLE TRENCH WIDTHS  
 2003-6 MINIMUM PUBLIC SAFETY REQUIREMENTS  
 2015-9 STANDARD MANHOLE STEP  
 2021-3 TRAIL LINE AND DECKING  
 2100-9 REQUIREMENTS FOR SAN. SEWERS NEAR WATER MAINS

LOT 32, 15 RESTRICTED TO NO CONSTRUCTION OF RESIDENTIAL BUILDINGS MAIN SHALL NOT BE SERVED BY THIS SEWER.

ISSUE NO H.L. CONNECTION PERMITS UNTIL OUTLET P.C. 11439 IS ACCEPTED FOR PUBLIC USE BY THE COUNTY OF LOS ANGELES

PRIVATE CONTRACT SEWER GENERAL NOTES

- A SEWER CONSTRUCTION PERMIT SHALL BE OBTAINED AND A FEE PAID FOR CONSTRUCTION INSPECTION AND RECORD PLANS TO THE DEPARTMENT OF PUBLIC WORKS PRIOR TO STARTING WORK UNDER THIS CONTRACT. COPIES OF ALL OTHER REQUIRED PERMITS, SUCH AS ROAD EXCAVATION, CALLING ETC. MUST BE FILED WITH THE PERMIT APPLICATION.
- PRIOR TO ISSUANCE OF ANY PERMIT THE CONTRACTOR SHALL FILE A PERMIT FOR EXCAVATIONS AND TRENCHES FROM THE STATE OF CALIFORNIA DIVISION OF INDUSTRIAL SAFETY AND CERTIFICATE OF WORKER COMPENSATION INSURANCE WITH THE DEPARTMENT OF PUBLIC WORKS (HAWK) AS THE CERTIFICATE HAWK TO BE NOTIFIED 30 DAYS PRIOR TO CANCELLATION OF POLICY.
- IF WORK IS TO BE DONE IN A STATE HIGHWAY, A PERMIT MUST BE OBTAINED FROM THE STATE OF CALIFORNIA DIVISION OF HIGHWAY, 120 SOUTH SPRING STREET, LOS ANGELES, CALIFORNIA.
- WHEN WORK IS WITHIN A CONTRACT CITY, THE CONTRACTOR MUST CONTACT THE DIRECTOR OF PUBLIC WORKS OF THAT CITY TO DETERMINE THE LOCATION TO PAY THE INSPECTION FEE.
- THE CONTRACTOR SHALL CONTACT THE DISTRICT OFFICE LISTED ON THE "APPLICATION FOR CONSTRUCTION PERMIT" TO ARRANGE FOR AN ACCEPTABLE CONSTRUCTION START DATE AND SHALL NOTIFY THE CONSTRUCTION DIVISION BY TELEPHONE (800) 400-9180 AT LEAST THIRTY-FOUR HOURS BEFORE STARTING ANY WORK UNDER THIS CONTRACT.
- APPROVAL OF THIS PLAN BY THE COUNTY OF LOS ANGELES DOES NOT CONSTITUTE A REPRESENTATION AS TO ACCURACY OF THE LOCATION OF OR THE EXISTENCE OR NON-EXISTENCE OF ANY UNDERGROUND UTILITY PIPE OR STRUCTURE WITHIN THE LIMITS OF THIS PROJECT. THIS NOTE APPLIES TO ALL PAGES.
- ALL WORK SHALL BE IN ACCORDANCE WITH THE "STANDARD SPECIFICATIONS FOR PUBLIC WORKS CONSTRUCTION, INCLUDING SUPPLEMENTS AND THE SPECIAL PROVISIONS FOR THE CONSTRUCTION OF SANITARY SEWERS, AND SHALL BE PROSECUTED ONLY IN THE PRESENCE OF THE DEPARTMENT OF PUBLIC WORKS PERSONNEL.
- THE CONTRACTOR'S ATTENTION IS DIRECTED TO SECTION 11.4.1.1 OF THE STANDARD SPECIFICATIONS FOR PUBLIC WORKS CONSTRUCTION IN REGARD TO SAFETY ORDERS AND SHALL CONFORM TO THE "MINIMUM PUBLIC SAFETY REQUIREMENTS" AS SHOWN ON LOS ANGELES DEPARTMENT OF PUBLIC WORKS' STANDARD P-2.
- ELEVATIONS ARE IN FEET ABOVE U.S.C. & G.S. SEA LEVEL DATUM OF 1989.
- NO REVISIONS SHALL BE MADE IN THESE PLANS WITHOUT THE APPROVAL OF THE DIRECTOR OF PUBLIC WORKS.
- NO REPRESENTATIVE OF THE DEPARTMENT OF PUBLIC WORKS WILL SURVEY OR LAY OUT ANY PORTION OF THE WORK.
- GRADES TO WHICH THIS IMPROVEMENT IS TO BE CONSTRUCTED ARE SHOWN ON PLANS AND PROFILES. GRADE POINTS FOR TOP OF CURB, CENTERLINE OF STREETS, CENTERLINE OF ALLEYS AND SHOWN BY CIRCLES OR SQUARES AT ALL POINTS DESIGNATED (DESIGNATED POINTS) THE GRADE SHALL BE ESTABLISHED SO AS TO CONFORM TO A SLOPE LINE SHOWN WITHOUT SAID DESIGNATED POINTS.
- THE PRIVATE ENGINEER SHALL FURNISH THE DEPARTMENT OF PUBLIC WORKS WITH GRADE SHEETS AND STATIONING FOR ALL HOUSE LATERALS AND "T" JOINT BRANCHES AND SHALL PROVIDE STAKES FOR THEM AT THEIR PROPER LOCATIONS WITH STATIONING PLAINLY MARKED. ALL HOUSE LATERALS SHALL BE CONSTRUCTED AT A STRAIGHT ALIGNMENT AT RIGHT ANGLES FROM THE MAIN LINE SEWER EXCEPT AS SHOWN ON THE PLANS. HOUSE LATERALS FROM DRIVEWAYS SHALL NOT HAVE AN ANGLE OF LESS THAN 40° WITH THE H.L. SEWER. ANY CHANGE IN ALIGNMENT SHALL BE REQUESTED IN WRITING BY THE PRIVATE ENGINEER.
- THE PRIVATE ENGINEER SHALL FINISH THE HOUSE LATERAL DEPTH AT THE PROPERTY LINE BELOW THE TOP CURB ELEVATION FOR EACH HOUSE LATERAL ON THE GRADE SHEET.

CONSTRUCTION NOTES

- THE PRIVATE ENGINEER SHALL FURNISH THE DEPARTMENT OF PUBLIC WORKS WITH GRADE SHEETS AND STATIONING FOR ALL HOUSE LATERALS AND "T" JOINT BRANCHES AND SHALL PROVIDE STAKES FOR THEM AT THEIR PROPER LOCATIONS WITH STATIONING PLAINLY MARKED. ALL HOUSE LATERALS SHALL BE CONSTRUCTED AT A STRAIGHT ALIGNMENT AT RIGHT ANGLES FROM THE MAIN LINE SEWER EXCEPT AS SHOWN ON THE PLANS. HOUSE LATERALS FROM DRIVEWAYS SHALL NOT HAVE AN ANGLE OF LESS THAN 40° WITH THE H.L. SEWER. ANY CHANGE IN ALIGNMENT SHALL BE REQUESTED IN WRITING BY THE PRIVATE ENGINEER.
- HOUSE LATERALS TO BE CONSTRUCTED WITH INVERTS AT PROPERTY LINE 6 FEET BELOW CURB GRADE EXCEPT AS NOTED.
- USE OF TEE BRANCHES MAY BE USED FOR CONNECTIONS TO MAINLINE SEWERS EXCEPT AS NOTED.
- IF DURING THE COURSE OF CONSTRUCTION, IT IS DETERMINED THAT THERE IS LESS THAN FOUR FEET OF COVER OVER THE TOP OF ANY MANHOLE, OR HOUSE LATERAL, V.C.P. SEWER WHICH IS NOT INDICATED ON THE PLANS, THE PIPE SHALL BE ENCASED PER STANDARD PLANS P-23 CASE 11, UNLESS OTHERWISE APPROVED BY THE DIRECTOR OF PUBLIC WORKS.
- ALL JOINTS BETWEEN CAST IRON PIPE AND VITRIFIED CLAY PIPE SHALL BE MADE WITH A RUBBER BUSH JOINT, TYPE "D" (WITH BUSHING IF NECESSARY) PER STANDARD SPECIFICATIONS SECTION B09-5.
- HOUSE LATERALS TO BE CONSTRUCTED WITH INVERTS AT PROPERTY LINE 6 FEET BELOW CURB GRADE EXCEPT AS NOTED.
- USE OF TEE BRANCHES MAY BE USED FOR CONNECTIONS TO MAINLINE SEWERS EXCEPT AS NOTED.
- IF DURING THE COURSE OF CONSTRUCTION, IT IS DETERMINED THAT THERE IS LESS THAN FOUR FEET OF COVER OVER THE TOP OF ANY MANHOLE, OR HOUSE LATERAL, V.C.P. SEWER WHICH IS NOT INDICATED ON THE PLANS, THE PIPE SHALL BE ENCASED PER STANDARD PLANS P-23 CASE 11, UNLESS OTHERWISE APPROVED BY THE DIRECTOR OF PUBLIC WORKS.
- ALL JOINTS BETWEEN CAST IRON PIPE AND VITRIFIED CLAY PIPE SHALL BE MADE WITH A RUBBER BUSH JOINT, TYPE "D" (WITH BUSHING IF NECESSARY) PER STANDARD SPECIFICATIONS SECTION B09-5.
- HOUSE LATERALS TO BE CONSTRUCTED WITH INVERTS AT PROPERTY LINE 6 FEET BELOW CURB GRADE EXCEPT AS NOTED.
- USE OF TEE BRANCHES MAY BE USED FOR CONNECTIONS TO MAINLINE SEWERS EXCEPT AS NOTED.
- IF DURING THE COURSE OF CONSTRUCTION, IT IS DETERMINED THAT THERE IS LESS THAN FOUR FEET OF COVER OVER THE TOP OF ANY MANHOLE, OR HOUSE LATERAL, V.C.P. SEWER WHICH IS NOT INDICATED ON THE PLANS, THE PIPE SHALL BE ENCASED PER STANDARD PLANS P-23 CASE 11, UNLESS OTHERWISE APPROVED BY THE DIRECTOR OF PUBLIC WORKS.
- ALL JOINTS BETWEEN CAST IRON PIPE AND VITRIFIED CLAY PIPE SHALL BE MADE WITH A RUBBER BUSH JOINT, TYPE "D" (WITH BUSHING IF NECESSARY) PER STANDARD SPECIFICATIONS SECTION B09-5.
- HOUSE LATERALS TO BE CONSTRUCTED WITH INVERTS AT PROPERTY LINE 6 FEET BELOW CURB GRADE EXCEPT AS NOTED.
- USE OF TEE BRANCHES MAY BE USED FOR CONNECTIONS TO MAINLINE SEWERS EXCEPT AS NOTED.
- IF DURING THE COURSE OF CONSTRUCTION, IT IS DETERMINED THAT THERE IS LESS THAN FOUR FEET OF COVER OVER THE TOP OF ANY MANHOLE, OR HOUSE LATERAL, V.C.P. SEWER WHICH IS NOT INDICATED ON THE PLANS, THE PIPE SHALL BE ENCASED PER STANDARD PLANS P-23 CASE 11, UNLESS OTHERWISE APPROVED BY THE DIRECTOR OF PUBLIC WORKS.
- ALL JOINTS BETWEEN CAST IRON PIPE AND VITRIFIED CLAY PIPE SHALL BE MADE WITH A RUBBER BUSH JOINT, TYPE "D" (WITH BUSHING IF NECESSARY) PER STANDARD SPECIFICATIONS SECTION B09-5.
- HOUSE LATERALS TO BE CONSTRUCTED WITH INVERTS AT PROPERTY LINE 6 FEET BELOW CURB GRADE EXCEPT AS NOTED.
- USE OF TEE BRANCHES MAY BE USED FOR CONNECTIONS TO MAINLINE SEWERS EXCEPT AS NOTED.
- IF DURING THE COURSE OF CONSTRUCTION, IT IS DETERMINED THAT THERE IS LESS THAN FOUR FEET OF COVER OVER THE TOP OF ANY MANHOLE, OR HOUSE LATERAL, V.C.P. SEWER WHICH IS NOT INDICATED ON THE PLANS, THE PIPE SHALL BE ENCASED PER STANDARD PLANS P-23 CASE 11, UNLESS OTHERWISE APPROVED BY THE DIRECTOR OF PUBLIC WORKS.
- ALL JOINTS BETWEEN CAST IRON PIPE AND VITRIFIED CLAY PIPE SHALL BE MADE WITH A RUBBER BUSH JOINT, TYPE "D" (WITH BUSHING IF NECESSARY) PER STANDARD SPECIFICATIONS SECTION B09-5.
- HOUSE LATERALS TO BE CONSTRUCTED WITH INVERTS AT PROPERTY LINE 6 FEET BELOW CURB GRADE EXCEPT AS NOTED.
- USE OF TEE BRANCHES MAY BE USED FOR CONNECTIONS TO MAINLINE SEWERS EXCEPT AS NOTED.

PROFILE, ALIGNMENT AND GRADE OF  
 SANITARY SEWERS 54914  
 TO BE CONSTRUCTED IN  
 TR. 46908-05 PC NO. 11445  
 2 SHEETS: 3 PAGES  
 COUNTY OF LOS ANGELES CALIFORNIA  
 Index 1332

HARRY STONE DIRECTOR OF PUBLIC WORKS

APPROVED BY: BUILDING & SAFETY/LAND DEVELOPMENT DIVISION  
 BY Ronald Colquhoun 10-7-99  
 COUNTY ENGINEER

SUBMITTED BY Phil Dwyer 10-6-99  
 COUNTY ENGINEER

APPROVED: COUNTY SANITATION DISTRICT OF LOS ANGELES CALIF.  
 CHARLES W. CARRY - CHIEF ENGINEER, and GENERAL MANAGER  
 COUNTY SANITATION DISTRICT NO. 26  
 BY E. J. S. 12/1/99  
 COUNTY ENGINEER

THE EXISTENCE AND LOCATION OF ANY UNDERGROUND UTILITY PIPES OR STRUCTURES SHOWN ON THESE PLANS IS REQUIRED BY A SEARCH OF AVAILABLE RECORDS TO THE BEST OF OUR KNOWLEDGE. THERE ARE NO EXISTING UTILITIES EXCEPT AS SHOWN ON THIS MAP. THE CONTRACTOR IS REQUIRED TO TAKE PRECAUTIONARY MEASURES TO PROTECT THE UTILITY LINES SHOWN AND ANY OTHER LINES NOT OF RECORD OR NOT SHOWN ON THIS DRAWING. PRIOR TO EXCAVATION THE CONTRACTOR SHALL CALL TOLL FREE 1-800-452-5273 TO VERIFY THE UNDERGROUND LOCATION OF GAS AND TELEPHONE LINES. THE CONTRACTOR SHALL CALL TOLL FREE 1-800-452-5273 TO VERIFY THE UNDERGROUND LOCATION OF GAS AND TELEPHONE LINES. THE CONTRACTOR SHALL CALL TOLL FREE 1-800-452-5273 TO VERIFY THE UNDERGROUND LOCATION OF GAS AND TELEPHONE LINES.

Buildler 1-26-99  
 REE NO. 19229 DATE

INDEX MAP  
 SCALE: 1" = 600'  
 P.C. 11445 TR. NO. 46908-05  
 THOMAS GUIDE PG. NO. 4461/A-2, 3; B-2, 3  
 NOTE: NUMBERS IN CIRCLES INDICATE PAGE NUMBERS

BUILDING AND SAFETY LOCAL OFFICE SANTA CLARITA

NO L.A. C.U. CHARGES FOR CONNECTION  
 SEE CO. SANITATION DISTRICT FOR SPECIAL CONNECTION CHARGES  
 TEL. (562) 699-7411 EX. 2727

94915

PLAN SCALE: 1" = 40'

SANITARY SEWER PLANS IN TR. NO. 46908-05 PC NO. 11445

REVIEWED BUILDING & SAFETY/LAND DEVELOPMENT DIVISION BY [Signature] 10/15/99  
 COUNTY OF LOS ANGELES DEPARTMENT OF PUBLIC WORKS

SIKAND ENGINEERING ASSOCIATES CONSULTING ENGINEERS  
 15230 MIDWAY BLVD., VAN NUYS, CALIFORNIA 91411 (818) 781-2558

RECORD PLANS

C.V. SEWER CURVE DATA

DELTA	RADIUS	40C	TAN
1 032° 38' 25"	405.00'	216.58'	110.95'

BACKWATER VALVES MAY BE REQUIRED FOR LOTS 4, 5, 6, 27, 28, & 29

ISSUE NO H.L. CONNECTION PERMITS UNTIL OUTLET P.C. 11439 IS ACCEPTED FOR PUBLIC USE BY THE COUNTY OF LOS ANGELES

RECORD PLANS

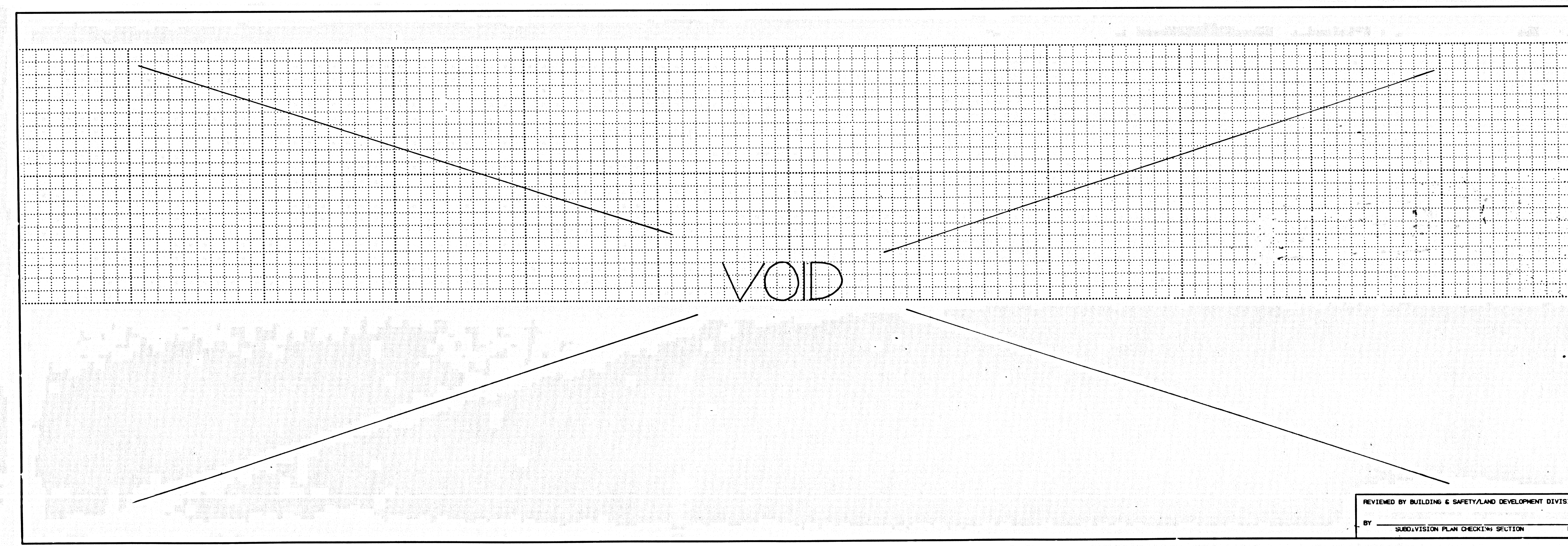
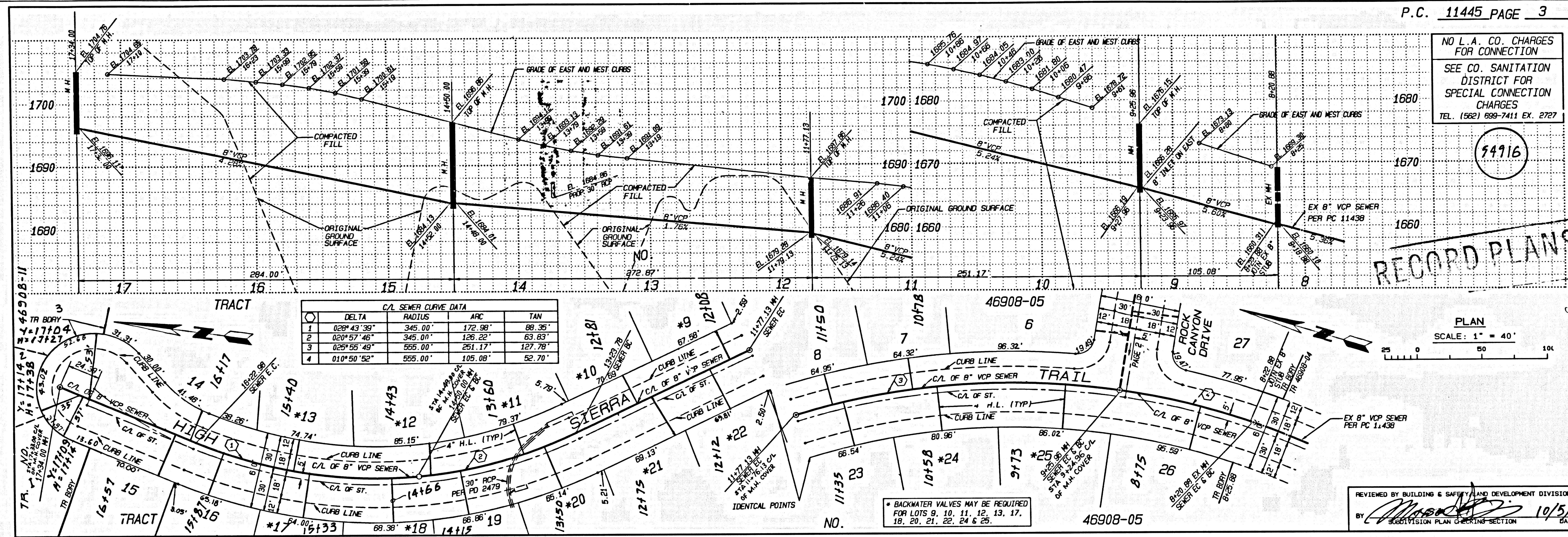
1  
TR. 46908-05 PC 11445

NO L.A. CO. CHARGES FOR CONNECTION  
 SEE CO. SANITATION DISTRICT FOR SPECIAL CONNECTION CHARGES  
 TEL. (562) 699-7411 EX. 2727

54916

RECORD PLANS

PLAN  
 SCALE: 1" = 40'



5  
 18' NO. 46908-02 BC 11442