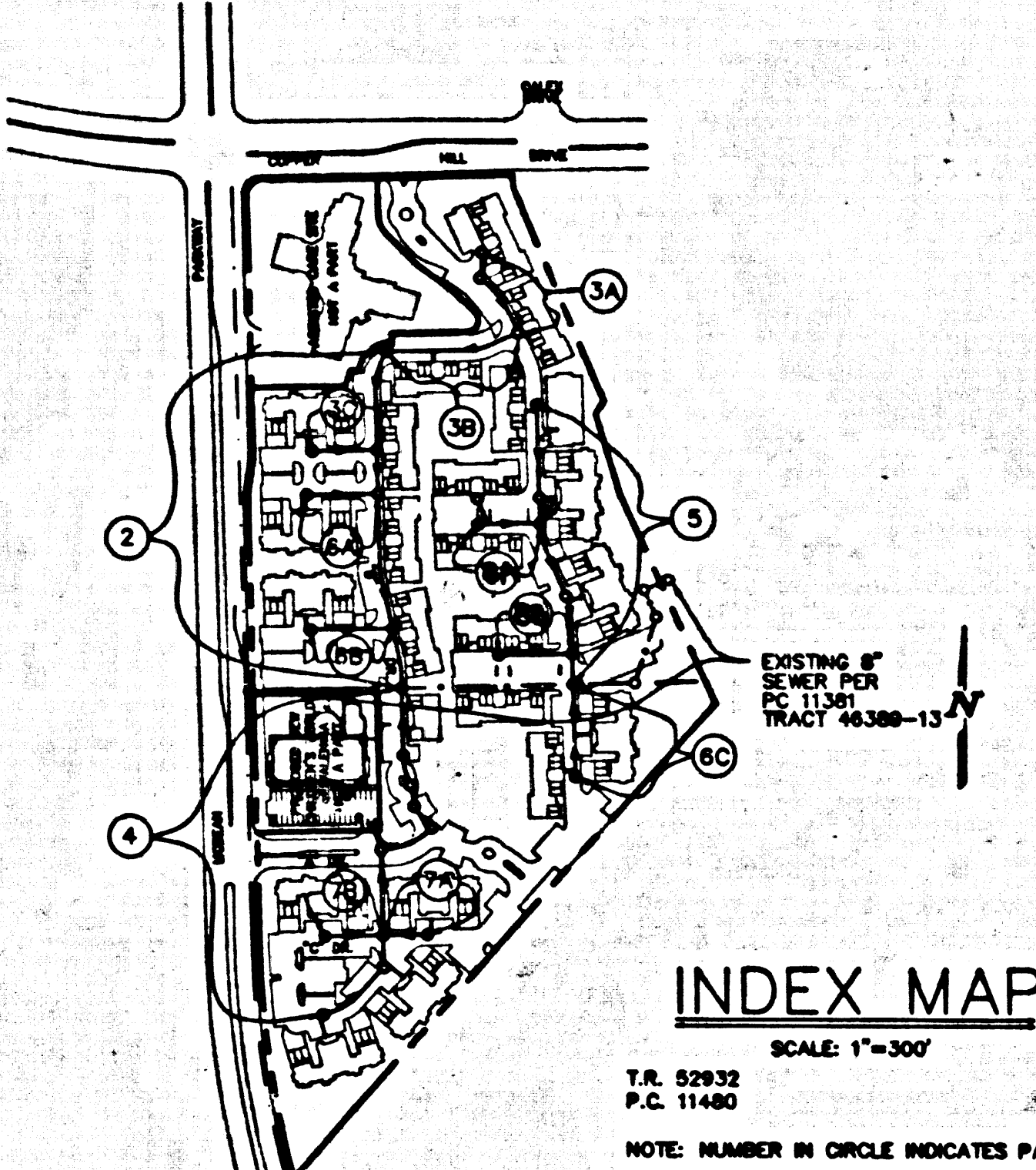


**BENCH MARK**  
 BM L.A. COUNTY B.M. 5291 Elev. 1342.771  
 DPW BM TAG IN S CB 5 FT. E/O BCR @ SE  
 COR SECO CYN RD. & COPPER HILL DR. 64  
 FT. E & 32 FT S/O C/L INT (W END C B)  
 NEWELL QUAD 1932



NO.	REVISION	REVISED BY	APPROVED BY	DATE

**STORMWATER POLLUTION CONTROL REQUIREMENTS FOR SEWER CONSTRUCTION**

- Eroded sediments and other pollutants must be retained on site and may not be transported from the site by sheet flow, swales, area drains, natural drainage courses, or ditches.
- Stockpiles of earth and other construction related materials must be protected from being transported from the site by the forces of wind or water.
- Fuels, oils, solvents, and other liquid materials must be stored in accordance with their labeling and are not to contaminate the soil and surface waters. All approved storage containers are to be protected from the weather. Spills must be cleaned up immediately and disposed of in a proper manner. Spills may not be washed into the drainage system.
- Excess or waste concrete may not be washed into the public way or any other drainage system. Provisions shall be made to finish concrete wastes on site until they can be disposed of as solid waste.
- Trash and construction-related solid wastes must be deposited into a covered receptacle to prevent contamination of rainwater and dispersed by wind.
- Sediments and other materials may not be tracked from the site by vehicle traffic. The construction entrance/receptacle must be established so as to inhibit sediments from being deposited into the public way. Accidental operations must be swept up immediately and may not be washed down by rain or other means.
- Any access with disturbed soils or denuded of vegetation must be stabilized so as to inhibit erosion by wind and water.

**DOUBLE SCALE**

- |  |  |
|--|--|
| CA001 - Dewatering Operations                | ES110 - Seeding and Planting             |
| CA002 - Paving Operations                    | ES111 - Mulching                         |
| CA003 - Structural Construction and Painting | ES120 - Sedimentation and Mats           |
| CA010 - Material Delivery and Storage        | ES220 - Dust Control                     |
| CA018 - Solid Waste Management               | ES221 - Temporary Stream Crossing        |
| CA021 - Hazardous Waste Management           | ES222 - Construction Road Stabilization  |
| CA022 - Construction Waste Management        | ES223 - Stabilized Construction Entrance |
| CA024 - Sanitary/Septic Waste Management     | ES224 - Storm Drain Inlet Protection     |
| CA025 - Concrete Waste Management            |  |
| CA031 - Vehicle and Equipment Cleaning       |  |
| CA032 - Vehicle and Equipment Maintenance    |  |
| ES020 - Scheduling                           |  |
| ES022 - Preservation of Existing Vegetation  |  |

**STANDARD PLANS**  
 THE FOLLOWING LATEST REVISED STANDARD PLANS ON FILE IN THE OFFICE OF THE FOLLOWING DEPARTMENT SHALL APPLY IN THE CONSTRUCTION OF THIS PROJECT.

**LOS ANGELES COUNTY DEPARTMENT OF PUBLIC WORKS**

APWA 208-D BREAKING INTO EXISTING MANHOLES  
 CHIMNEYS  
 APWA 222-D HOUSE CONNECTION SEWER  
 APWA 223-D HOUSE CONNECTION RUMBLEGRATE  
 2000-D LEGEND FOR SANITARY SEWER PLANS AND PROFILES AND DISTRICT MAPS  
 2021-D BEDDING FOR SEWER PIPE  
 2024-D WYE OR Tee SUPPORT  
 2027-D ALLOWABLE TRENCH WIDTHS

**NOTE:** EASEMENT TO THE COUNTY OF LOS ANGELES FOR SANITARY SEWER, WAREHOUSE AND EGRESS TO BE GRANTED OVER ALL PRIVATE STREETS PER FINAL MAP.

**NO CONNECTION FOR THE DISPOSAL OF INDUSTRIAL WASTES SHALL BE MADE TO SEWERS SHOWN ON THESE DRAWINGS UNTIL A PERMIT FOR INDUSTRIAL WASTEWATER DISCHARGE HAS BEEN ISSUED BY THE SANITATION DISTRICT FOR SUCH CONNECTION.**

**BEFORE BREAKING INTO OR CONSTRUCTION ON A COUNTY SANITARY DISTRICT SEWER AND PRIOR TO FINAL ACCEPTANCE OF THE PROJECT, SANITATION DISTRICT INSPECTOR SHALL BE NOTIFIED BY PHONE: (811) 266-6663 SO THAT REQUIRED INSPECTION CAN BE MADE.**

**PRIVATE CONTRACT SEWER GENERAL NOTES**

- A sewer construction permit shall be obtained and a fee paid for construction inspection and record plans to the Department of Public Works at the Permit Counter, 900 South Fremont Avenue, 8th Floor, Alhambra, at least 72 hours prior to starting work under this permit. Copies of all other required permits, such as Road Excavation, California, etc., must be filed with the permit application.
- Prior to issuance of any permit, the contractor shall file a permit for excavations and trenches from the State of California Division of Industrial Safety, and a Certificate of Worker's Compensation Insurance from the State of California Workers' Compensation Administration to be notified 30 days prior to construction of public utility.
- If work is done in a State Highway, a permit must be obtained from the State of California Division of Highways, 120 South Spring Street, Los Angeles, California.
- When work is within a contract city, the contractor must contact the Director of Public Works of that city to determine the location to pay the inspection fee.
- The contractor shall contact the district office listed on the "Application for Construction Permit" to arrange for an acceptable construction start date.
- Approval of this plan by the County of Los Angeles does not constitute a representation as to accuracy of the location of or the existence or non-existence of any underground utility pipe or structure within the limits of this project. This note applies to all sheets.
- All work shall be in accordance with the latest approved edition of the "Standard Specifications for Public Works Construction, including amendments and the latest Special Provisions for the Construction of Sanitary Sewers and shall be promulgated only in the presence of the Department of Public Works." The contractor's attention is directed to Section 7-10.4.1 of the Standard Specifications for Public Works Construction in regard to safety orders and shall conform to the "Minimum Public Safety Requirements" as shown on Los Angeles Department of Public Works' Standard S-2.
- Disturbances are in feet above U.S.C. & G.S. sea level datum of 1929.
- No revisions shall be made to these plans without the approval of the Director of Public Works.
- No representative of the Department of Public Works will survey or lay out any portion of the work.
- Grades to which this improvement is to be constructed are shown on plans and profiles. Grade points for top of curb, centerline of streets, or centerline of alleys, are shown by circles on profiles at all points between designated points. The grade shall be established as to conform to a straight line drawn between said designated points.
- The private engineer shall furnish the Department of Public Works with grade sheets and staking for all house laterals and "T" branches and shall provide stakes for them at their proper locations with staking clearly marked. All house laterals shall be constructed in a straight alignment at right angles from the main line sewer except where otherwise shown. House laterals from driveways shall not have an angle of less than 45 degrees with the M.L. sewer. Any change in alignment shall be requested in writing by the private engineer. The house lateral depth at the property line below the top of curb elevation for each house lateral on the grade sheet.

**CONSTRUCTION NOTES**

- Provide survey stakes on the property line or property lines produced at right angles to the sewer line at the centerline of each manhole.
- Verified clay pipe joints shall be type "T" or "Q" per standard specifications section 208-2.
- If a manhole is within three feet of the sewer, the sewer shall be encased per standard plan S-23, case II, two feet on each side from the point of interference.
- All joints between cast iron pipe and vitrified clay pipe shall be made with a rubber sleeve joint, type "D" (with bushing if necessary) per standard specifications section 208-2.
- House laterals to be constructed with manholes at the property line 6 feet below curb grade except as noted.
- Wye or tee branches may be used for connections to the mainline sewers except as noted.
- If during the course of construction, it is determined that there is less than four feet of cover over the top of a manhole or house lateral V.C.P. sewer which is not indicated on the plans, the pipes shall be encased per standard plan S-23, case I, unless otherwise approved by the Director of Public Works.
- All structures shall be either brick sewer manholes per standard plan S-3 or precast concrete sewer manholes per standard plan S-36, or reinforced precast concrete manholes per standard plan S-6, except as noted.
- Structures of trenches shall meet Los Angeles County Public Works or California State Highway requirements in accordance with the permits.
- Full compliance with section 208-1.3.4, of the standard specifications will be required for health in street certification of trench construction and soil equivalents by a qualified civil engineer shall be provided by the permittee prior to the issuance of a certificate of partial occupancy.
- All basins and the outside of the street right of way shall be compacted to 90% of the maximum density as determined by ASTM soil compaction test D 1557-78 method "D" unless otherwise specified. This shall be certified by a qualified civil engineer. This certification shall be submitted to the Construction Division of the Department of Public Works prior to the acceptance of the work by the county.
- Manhole tops in unimproved rights of way to be six inches above finished grade.
- Sewers to be tested for leakage per section 308-1.4 of the standard specifications and special provisions.

**PROFILE, ALIGNMENT AND GRADE OF SANITARY SEWERS**

TO BE CONSTRUCTED IN  
 R/W EAST OF MCBEAN PARKWAY  
 AND SOUTH OF COPPERHILL DR ON PC NO. 11480  
 LOT 3 OF RECORDED TRACT 52932

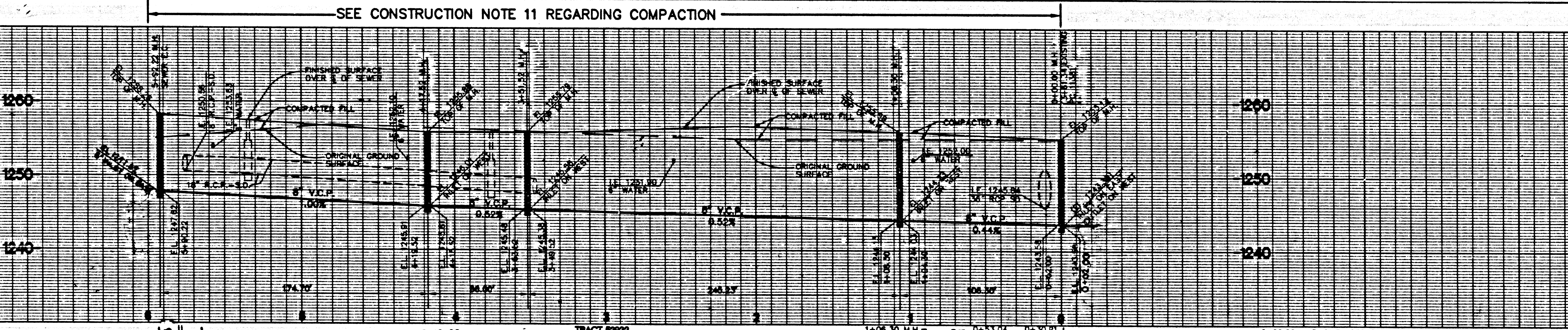
4 SHEETS: 8 PAGES  
 COUNTY OF LOS ANGELES CALIFORNIA  
 INDEX

55460

HARRY STONE DIRECTOR OF PUBLIC WORKS  
 APPROVED BY LAND DEVELOPMENT DIVISION  
 BY *Arnold P. Paulsen* 2-17-00  
 ASSISTANT ENGINEER DATE  
 SUBMITTED BY *Arnold P. Paulsen* 2-17-00  
 ENGINEER PLAN CHECKER DATE

APPROVED: COUNTY SANITATION DISTRICT  
 OF LOS ANGELES CALIF.  
 CHARLES H. CARRY - CHIEF ENGINEER and GENERAL MANAGER  
 COUNTY SANITATION DISTRICT NO. 32  
 BY *James Wang* DATE: 2-18-00  
 OFFICE ENGINEER

**PRIVATE ENGINEERS NOTICE TO CONTRACTORS:**  
 THE EXISTENCE AND LOCATION OF ANY UNDERGROUND UTILITY PIPES OR STRUCTURES SHOWN ON THESE PLANS IS REQUIRED BY A SEARCH OF AVAILABLE RECORDS TO THE BEST OF OUR KNOWLEDGE. THERE ARE NO EXISTING UTILITIES EXCEPT AS SHOWN ON THIS MAP. THE CONTRACTOR IS REQUIRED TO TAKE PRECAUTIONARY MEASURES TO PROTECT THE UTILITY LINES SHOWN AND ANY OTHER LINES NOT OF RECORD OR NOT SHOWN ON THIS DRAWING. PRIOR TO EXCAVATION THE CONTRACTOR SHALL CALL TOLL FREE 1-800-422-4133 TO VERIFY THE UNDERGROUND LOCATION OF GAS AND TELEPHONE LINES. THE CONTRACTOR SHALL ALSO CALL MR. RAY GUMBERG OF GENERAL TELEPHONE COMPANY AT 1-805-948 4871 SO THAT THEY CAN MARK THE LOCATION OF UNDERGROUND TELEPHONE LINES.  
*Ray Gumbert* 2-2-00  
 RCE NO. 57313 DATE



**SEWER CURVE DATA**

STATION	A	R	L	T
1	1053.56'	120.00'	22.83'	11.45'
2	1053.56'	120.00'	22.83'	11.45'
3	1423.33'	120.00'	72.03'	37.14'

PLAN SCALE: 1" = 40'  
 0 25 50 100

P.C.11480 PAGE 2  
 NO. L.A. CO. CHARGES FOR CONNECTION  
 SEE CO. SANITATION DISTRICT FOR SPECIAL CONNECTION CHARGES  
 DOUBLE SCALE  
 55461

**SANITARY SEWER PLANS IN R/W E/O MCBEAN PKWY. & S/O COPPERHILL DR. ON LOT 3 OF RECORDED TR. 52932 PC NO. 11480**

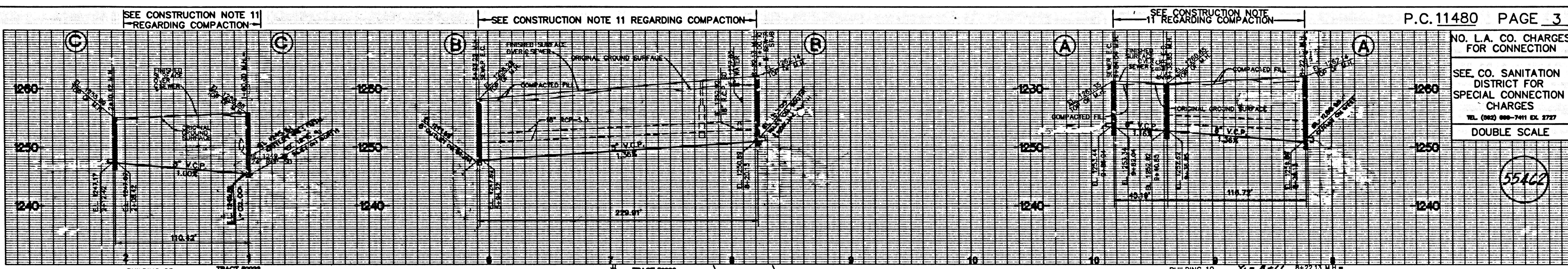
REVISED LAND DEVELOPMENT DIVISION  
 BY *Scott G. Ibalia* 2/16/2000  
 SUBMITTER PLAN CHECKER DATE  
 COUNTY OF LOS ANGELES DEPARTMENT OF PUBLIC WORKS

**ALLIANCE LAND PLANNING & ENGINEERING INC.**  
 5982 LAPLACE COURT SUITE 130 CARLSBAD, CA 92008  
 TEL: (760) 431-8898

IN 98010

08411 JA  
 SESS2 .RT





P.C.11480 PAGE 3

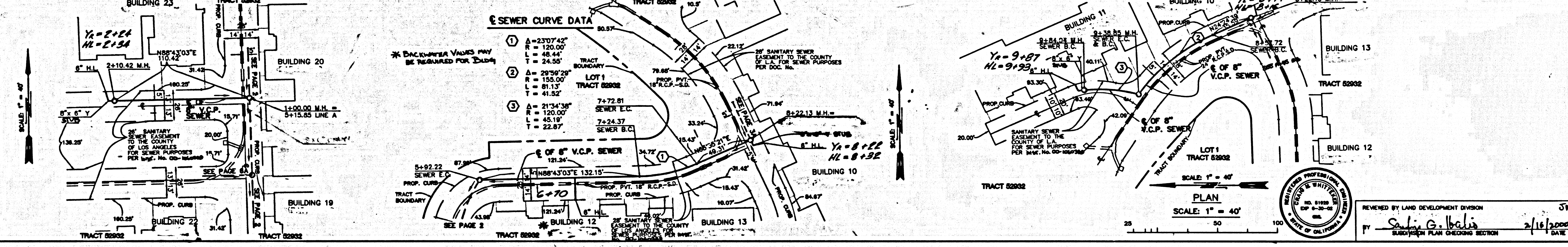
NO. L.A. CO. CHARGES FOR CONNECTION

SEE CO. SANITATION DISTRICT FOR SPECIAL CONNECTION CHARGES

TEL. (802) 888-7411 EX. 3727

DOUBLE SCALE

55462

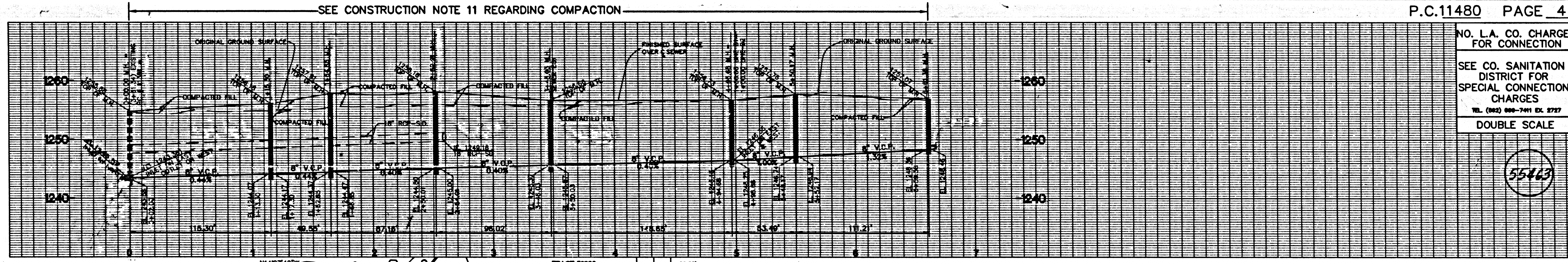


REVIEWED BY LAND DEVELOPMENT DIVISION 372

DATE 2/16/2000

BY *Sally G. Balis*

08411.29 SEWER PLAN



P.C.11480 PAGE 4

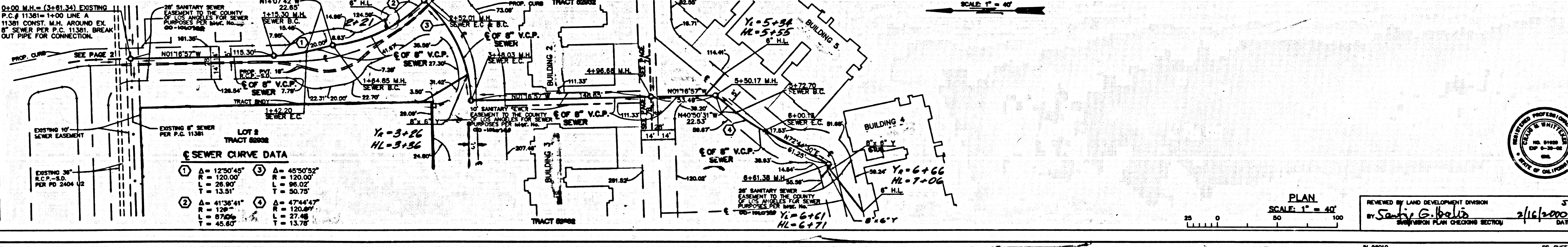
NO. L.A. CO. CHARGES FOR CONNECTION

SEE CO. SANITATION DISTRICT FOR SPECIAL CONNECTION CHARGES

TEL. (802) 888-7411 EX. 3727

DOUBLE SCALE

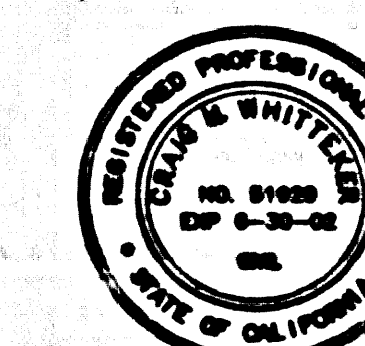
55463



REVIEWED BY LAND DEVELOPMENT DIVISION 372

DATE 2/16/2000

BY *Sally G. Balis*

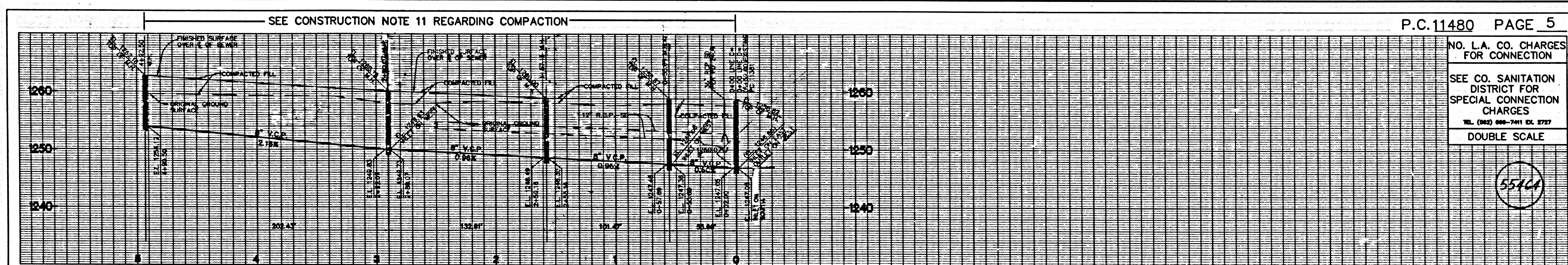


PLAN

SCALE: 1" = 40'

DATE 2/16/2000

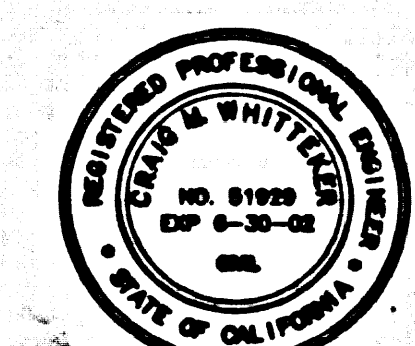
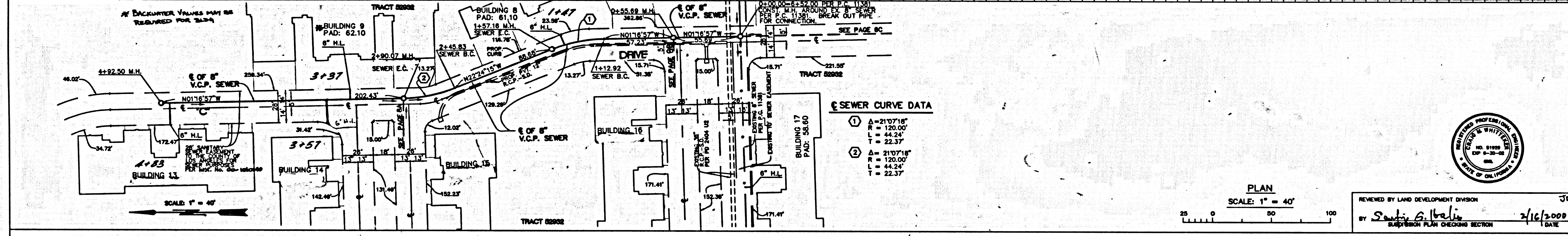




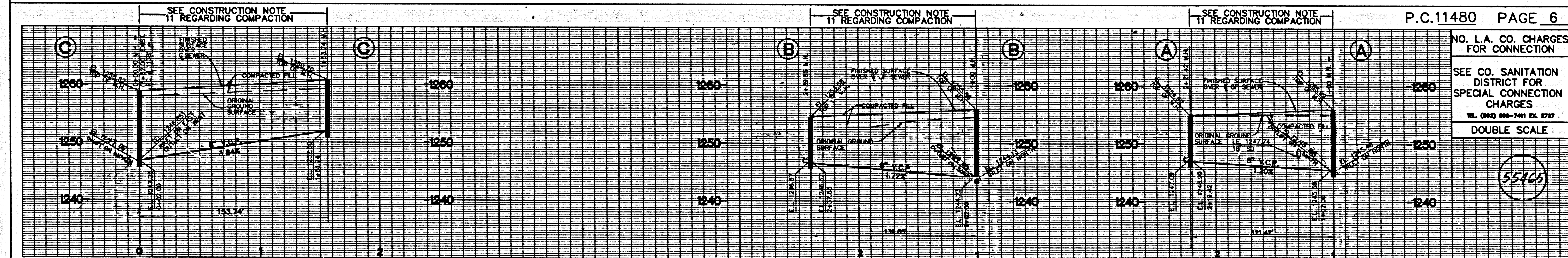
P.C.11480 PAGE 5

NO. L.A. CO. CHARGES FOR CONNECTION  
SEE CO. SANITATION DISTRICT FOR SPECIAL CONNECTION CHARGES  
TEL. (802) 888-7411 EX. 8727  
DOUBLE SCALE

5546A



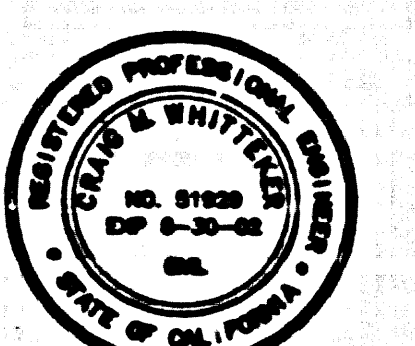
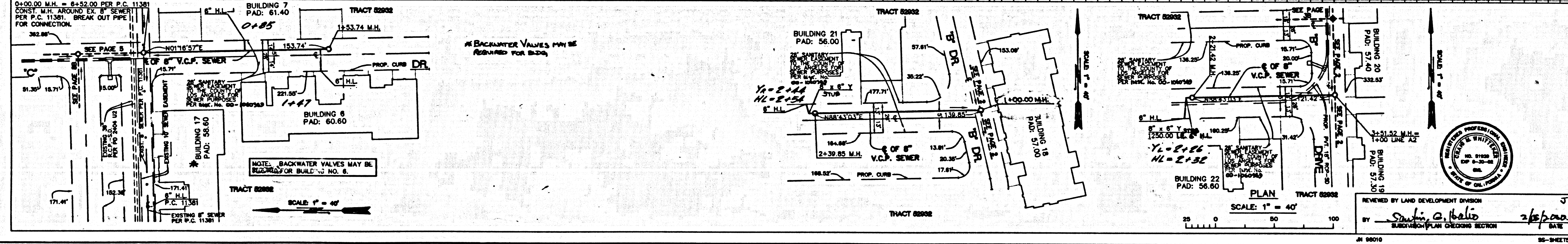
REVIEWED BY LAND DEVELOPMENT DIVISION  
BY *Scott G. Helio* 2/16/2008  
SUPERVISOR PLAN CHECKING SECTION DATE



P.C.11480 PAGE 6

NO. L.A. CO. CHARGES FOR CONNECTION  
SEE CO. SANITATION DISTRICT FOR SPECIAL CONNECTION CHARGES  
TEL. (802) 888-7411 EX. 8727  
DOUBLE SCALE

5546B



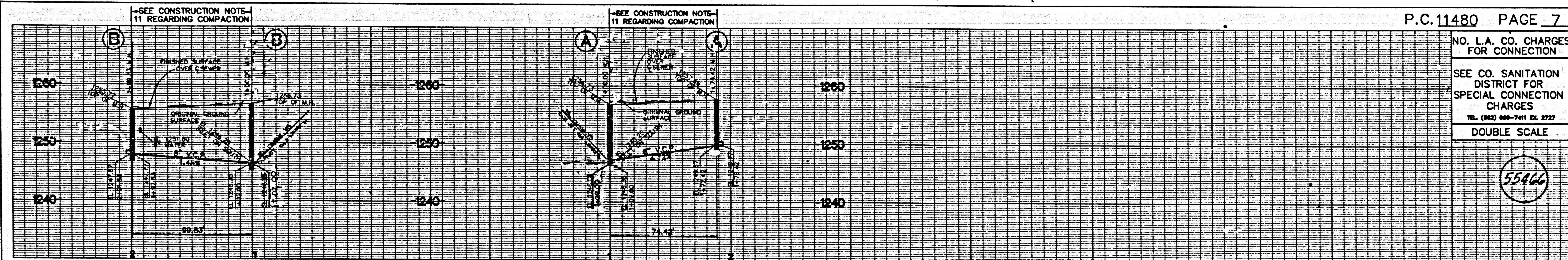
REVIEWED BY LAND DEVELOPMENT DIVISION  
BY *Scott G. Helio* 2/16/2008  
SUPERVISOR PLAN CHECKING SECTION DATE

3

08411 .39

SECS2 .97





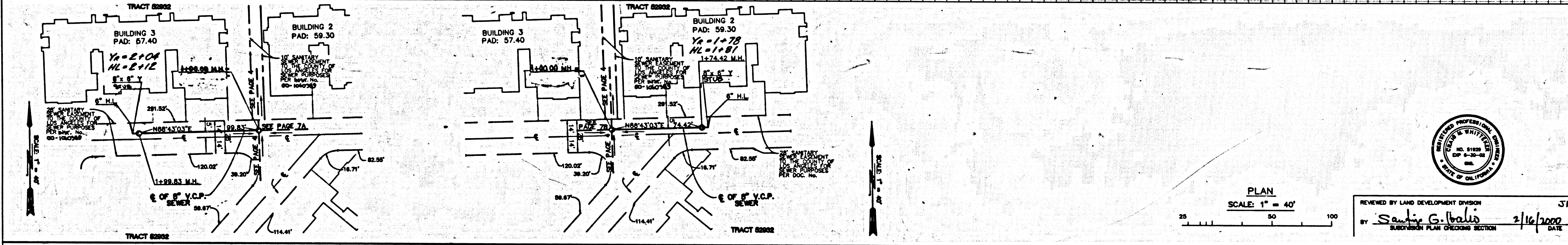
NO. L.A. CO. CHARGES FOR CONNECTION

SEE CO. SANITATION DISTRICT FOR SPECIAL CONNECTION CHARGES

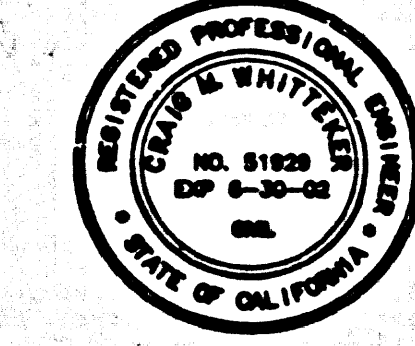
TEL. (802) 886-7411 EX. 2727

DOUBLE SCALE

55466



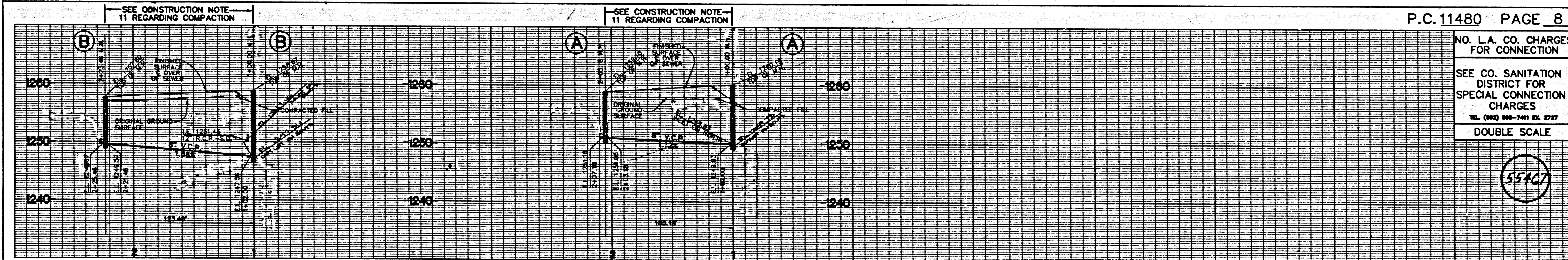
PLAN SCALE: 1" = 40'



REVIEWED BY LAND DEVELOPMENT DIVISION

BY Sandy G. Galis 2/16/2000 DATE

SUBDIVISION PLAN CHECKING SECTION



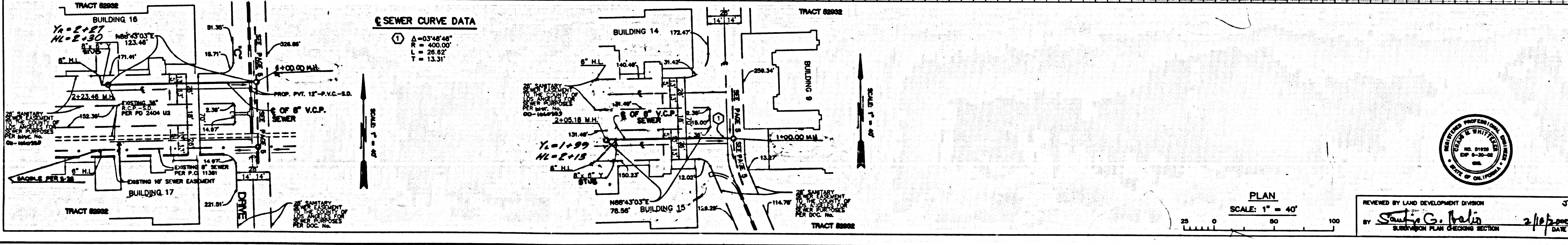
NO. L.A. CO. CHARGES FOR CONNECTION

SEE CO. SANITATION DISTRICT FOR SPECIAL CONNECTION CHARGES

TEL. (802) 886-7411 EX. 2727

DOUBLE SCALE

55467



SEWER CURVE DATA

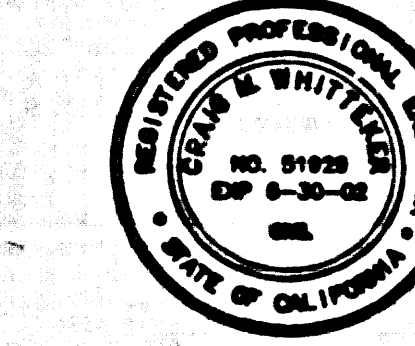
① Δ = 07°48'48"

R = 400.00'

L = 26.82'

T = 13.31'

PLAN SCALE: 1" = 40'



REVIEWED BY LAND DEVELOPMENT DIVISION

BY Sandy G. Galis 2/16/2000 DATE

SUBDIVISION PLAN CHECKING SECTION

08411.29 SESS2.RT