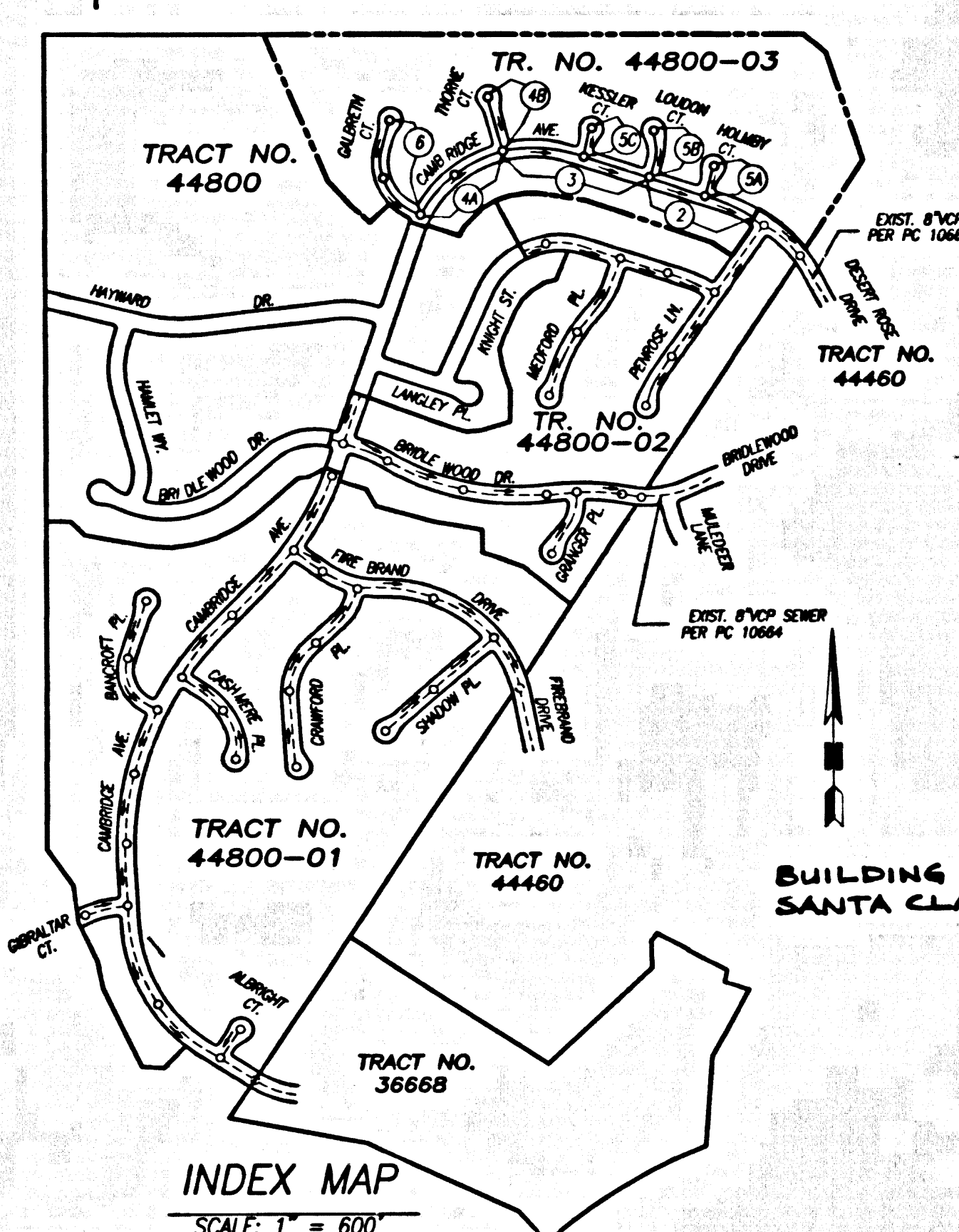


B.M. 3976 ELEV. 1065.685
 RDBM TAG IN C.B. 4 FT N BCR 70 FT N
 AND 32 FT E CL INT. OLD ROAD & HASLEY
 CANYON ROAD OFF-RAMP
 NEWHALL QUAD. 19 83



STORMWATER POLLUTION CONTROL REQUIREMENTS FOR SEWER CONSTRUCTION

- Eroded sediments and other pollutants must be retained on site and may not be transported from the site via sheetflow, erosion, or other drainage courses or wind.
- Stockpiles of earth and other construction related materials must be protected from being transported from the site by the forces of wind or water.
- Fuels, oils, solvents and other toxic materials must be stored in accordance with their labeling and are not to contaminate the soil and surface waters. All approved storage containers are to be protected from the weather. Spills must be cleaned up immediately and disposed of in a proper manner. Spills may not be washed into the drainage system.
- Excess or waste concrete may not be washed into the public way or any other drainage system. Provisions shall be made to retain concrete wastes on site until they can be disposed of as solid waste.
- Trash and construction related solid wastes must be deposited into a covered receptacle to prevent contamination of collector and disposed by wind.
- Sediments and other materials may not be tracked from the site by vehicle traffic. The construction entrance roadway must be stabilized so as to avoid sediments from being deposited into the public way. Accidental discharges must be swept up immediately and may not be washed down by rain or other means.
- Any slope with disturbed soils or denuded of vegetation must be stabilized so as to inhibit erosion by wind and water.

The following sheets as outlined in, but not limited to, the Best Management Practices Handbook, California Stormwater Quality Task Force, Sacramento, California, 1992, or the "Water Treatment and Wastewater Control Construction (CSDS) Manual" may be required if deemed appropriate by County).

CA01 - DEMOLITION OPERATIONS	ES10 - SEEDING AND PLANTING
CA02 - EROSION OPERATIONS	ES11 - MULCHING
CA03 - STRUCTURE CONSTRUCTION AND PAINTING	ES20 - DISTURBED AREAS AND WAYS
CA04 - MATERIAL STORAGE AND STORAGE	ES21 - BEST PRACTICES
CA05 - SOLID WASTE MANAGEMENT	ES22 - TEMPORARY STREAM CROSSING
CA06 - HAZARDOUS WASTE MANAGEMENT	ES23 - CONSTRUCTION ROAD STABILIZATION
CA07 - CONCRETE WASTE MANAGEMENT	ES24 - STABILIZED CONSTRUCTION ENTRANCE
CA08 - SANITARY/SOLID WASTE MANAGEMENT	ES25 - STORM SWAIN PILE PROTECTION
CA09 - VEHICLE AND EQUIPMENT CLEANING	
CA10 - SANITARY/SOLID WASTE MANAGEMENT	
CA11 - VEHICLE AND EQUIPMENT CLEANING	
CA12 - VEHICLE AND EQUIPMENT MAINTENANCE	
CA13 - VEHICLE AND EQUIPMENT MAINTENANCE	
CA14 - VEHICLE AND EQUIPMENT MAINTENANCE	
CA15 - VEHICLE AND EQUIPMENT MAINTENANCE	
CA16 - VEHICLE AND EQUIPMENT MAINTENANCE	
CA17 - VEHICLE AND EQUIPMENT MAINTENANCE	
CA18 - VEHICLE AND EQUIPMENT MAINTENANCE	
CA19 - VEHICLE AND EQUIPMENT MAINTENANCE	
CA20 - VEHICLE AND EQUIPMENT MAINTENANCE	
CA21 - VEHICLE AND EQUIPMENT MAINTENANCE	
CA22 - VEHICLE AND EQUIPMENT MAINTENANCE	
CA23 - VEHICLE AND EQUIPMENT MAINTENANCE	
CA24 - VEHICLE AND EQUIPMENT MAINTENANCE	
CA25 - VEHICLE AND EQUIPMENT MAINTENANCE	
CA26 - VEHICLE AND EQUIPMENT MAINTENANCE	
CA27 - VEHICLE AND EQUIPMENT MAINTENANCE	
CA28 - VEHICLE AND EQUIPMENT MAINTENANCE	
CA29 - VEHICLE AND EQUIPMENT MAINTENANCE	
CA30 - VEHICLE AND EQUIPMENT MAINTENANCE	
CA31 - VEHICLE AND EQUIPMENT MAINTENANCE	
CA32 - VEHICLE AND EQUIPMENT MAINTENANCE	
CA33 - VEHICLE AND EQUIPMENT MAINTENANCE	
CA34 - VEHICLE AND EQUIPMENT MAINTENANCE	
CA35 - VEHICLE AND EQUIPMENT MAINTENANCE	
CA36 - VEHICLE AND EQUIPMENT MAINTENANCE	
CA37 - VEHICLE AND EQUIPMENT MAINTENANCE	
CA38 - VEHICLE AND EQUIPMENT MAINTENANCE	
CA39 - VEHICLE AND EQUIPMENT MAINTENANCE	
CA40 - VEHICLE AND EQUIPMENT MAINTENANCE	
CA41 - VEHICLE AND EQUIPMENT MAINTENANCE	
CA42 - VEHICLE AND EQUIPMENT MAINTENANCE	
CA43 - VEHICLE AND EQUIPMENT MAINTENANCE	
CA44 - VEHICLE AND EQUIPMENT MAINTENANCE	
CA45 - VEHICLE AND EQUIPMENT MAINTENANCE	
CA46 - VEHICLE AND EQUIPMENT MAINTENANCE	
CA47 - VEHICLE AND EQUIPMENT MAINTENANCE	
CA48 - VEHICLE AND EQUIPMENT MAINTENANCE	
CA49 - VEHICLE AND EQUIPMENT MAINTENANCE	
CA50 - VEHICLE AND EQUIPMENT MAINTENANCE	

STANDARD PLANS:
 THE FOLLOWING LATEST REVISED STANDARD PLANS ON FILE IN THE OFFICE OF THE DEPARTMENT OF PUBLIC WORKS SHALL APPLY IN THE CONSTRUCTION OF THIS PROJECT.

APWA 208-0 BREAKING INTO EXISTING MANHOLES
 APWA 222-0 HOUSE CONNECTION SEWER
 APWA 223-0 HOUSE CONNECTION MANHOLE
 APWA 205-2 NON-REINFORCED PRECAST CONCRETE MANHOLE
 APWA 225-1 BLANKET PROTECTION FOR PIPES

LEADS FOR SANITARY SEWER PLANS AND PROFILES AND DISTRICT MAPS:
 2001-0 BENCH FOR SEWER PIPE
 2002-0 ERECTION OF STREET CURBS
 2007-0 ALLOWABLE TRENCH WIDTHS
 2008-0 MINIMUM PUBLIC SAFETY REQUIREMENTS
 2015-0 STANDARD MANHOLE STEP
 2023-0 CHAINING AND DISCHARGE
 2100-0 REQUIREMENTS FOR SAN SEWERS NEAR WATER MAINS

PRIVATE CONTRACT SEWER GENERAL NOTES

- A SEWER CONSTRUCTION PERMIT SHALL BE OBTAINED AND A FEE PAID FOR CONSTRUCTION INSPECTION AND RECORD PLANS TO THE DEPARTMENT OF PUBLIC WORKS AT THE PLANT CONTROL, 800 SOUTH PLYMOUTH AVENUE, 8TH FLOOR, ALHAMBRA, AT LEAST 72 HOURS PRIOR TO STARTING WORK UNDER THIS CONTRACT. COPIES OF ALL OTHER REQUIRED PERMITS, SUCH AS ROAD EXCAVATION, CALTRANS ETC. MUST BE FILED WITH THE PERMIT APPLICATION.
- PRIOR TO RESUMPTION OF ANY PERMIT, THE CONTRACTOR SHALL FILE A PERMIT FOR EXCAVATIONS AND TRENCHES FROM THE STATE OF CALIFORNIA DIVISION OF INDUSTRIAL SAFETY AND A CERTIFICATE OF WORKERS COMPENSATION INSURANCE WITH THE DEPARTMENT OF PUBLIC WORKS NAMED AS THE CERTIFICATE HOLDER TO BE NOTIFIED 30 DAYS PRIOR TO CANCELLATION OF POLICY.
- IF WORK IS TO BE DONE IN A STATE HIGHWAY, A PERMIT MUST BE OBTAINED FROM THE STATE OF CALIFORNIA DIVISION OF HIGHWAYS, 120 SOUTH SPRING STREET, LOS ANGELES, CALIFORNIA.
- WHEN WORK IS WITHIN A CONTRACT CITY, THE CONTRACTOR MUST CONTACT THE DIRECTOR OF PUBLIC WORKS OF THAT CITY TO DETERMINE THE LOCATION TO PAY THE INSPECTION FEE.
- THE CONTRACTOR SHALL CONTACT THE DISTRICT OFFICE LISTED ON THE "APPLICATION FOR CONSTRUCTION PERMIT" TO ARRANGE FOR AN ACCEPTABLE CONTRACTOR TO START AND SHALL NOTIFY THE CONSTRUCTION DIVISION BY TELEPHONE (818)588-3128 AT LEAST TWENTY-FOUR HOURS BEFORE STARTING ANY WORK UNDER THIS CONTRACT.
- APPROVAL OF THIS PLAN BY THE COUNTY OF LOS ANGELES DOES NOT CONSTITUTE A REPRESENTATION AS TO ACCURACY OF THE LOCATION OF OR THE EXISTENCE OR NON-EXISTENCE OF ANY UNDERGROUND UTILITY PIPE OR STRUCTURE WITHIN THE LIMITS OF THIS PROJECT. THIS NOTE APPLIES TO ALL PAGES.
- ALL WORK SHALL BE IN ACCORDANCE WITH THE "STANDARD SPECIFICATIONS FOR PUBLIC WORKS CONSTRUCTION, INCLUDING SUPPLEMENTS AND THE SPECIAL PROVISIONS FOR THE CONSTRUCTION OF SANITARY SEWERS, AND SHALL BE PROSECUTED ONLY IN THE PRESENCE OF THE DEPARTMENT OF PUBLIC WORKS PERSONNEL.
- THE CONTRACTOR'S ATTENTION IS DIRECTED TO SECTION 7-10.4.1 OF THE STANDARD SPECIFICATIONS FOR PUBLIC WORKS CONSTRUCTION IN REGARD TO SAFETY ORDERS AND SHALL CONFORM TO THE "MINIMUM PUBLIC SAFETY REQUIREMENTS" AS SHOWN ON LOS ANGELES DEPARTMENT OF PUBLIC WORKS STANDARD S-2.
- ELEVATIONS ARE IN FEET ABOVE U.S.C. & G.S. SEA LEVEL DATUM OF 1929.
- NO REVISIONS SHALL BE MADE IN THESE PLANS WITHOUT THE APPROVAL OF THE DIRECTOR OF PUBLIC WORKS.
- NO REPRESENTATIVE OF THE DEPARTMENT OF PUBLIC WORKS WILL SURVEY OR LAY OUT ANY PORTION OF THE WORK.
- GRADES TO WHICH THIS SURVEYPOINT IS TO BE CONSTRUCTED ARE SHOWN ON PLANS AND PROFILES. GRADE POINTS FOR TOP OF CURBS, CENTERLINE OF STREETS, OR CENTERLINE OF ALLEYS ARE SHOWN BY CIRCLES ON PROFILES AT ALL POINTS BETWEEN DESIGNATED POINTS. THE GRADE SHALL BE ESTABLISHED SO AS TO CONFORM TO A STRAIGHT LINE DRAWN BETWEEN SAID DESIGNATED POINTS.
- THE PRIVATE ENGINEER SHALL FURNISH THE DEPARTMENT OF PUBLIC WORKS WITH GRADE SHEETS AND STATIONING FOR ALL HOUSE LATERALS AND HOUSE MAINS. ALL HOUSE SEWERS WHICH ARE NOT PROTECTED ON THE PUBLIC SIDE SHALL BE ENGAGED PER STANDARD PLANS S-23 CASE 8. UNLESS OTHERWISE SPECIFIED, ALL HOUSE SEWERS SHALL BE CONSTRUCTED IN A STRAIGHT ALIGNMENT AT RIGHT ANGLES FROM THE MAIN LINE SEWER EXCEPT WHERE THE PLAN OTHERWISE SHOWS. THE CONTRACTOR SHALL NOT INCREASE THE ANGLE OF LESS THAN 45° WITH THE MAIN SEWER ANY CHANGE IN ALIGNMENT SHALL BE REQUESTED IN WRITING BY THE PRIVATE ENGINEER.
- THE PRIVATE ENGINEER SHALL FURNISH THE HOUSE LATERAL DEPTH AT THE PROPERTY LINE BELOW THE TOP CURB ELEVATION FOR EACH HOUSE LATERAL ON THE GRADE SHEET.

CONSTRUCTION NOTES

- PROVIDE SURVEY STAKES ON THE PROPERTY LINE OR PROPERTY LINES PRODUCED AT RIGHT ANGLES TO THE SEWER LINE AT THE CENTERLINE OF EACH MANHOLE.
- WITHIN CLAY PIPE JOINTS SHALL BE TYPE "D" OR "F" PER STANDARD SPECIFICATIONS SECTION 308-2.
- IF A POWER POLE IS WITHIN THREE FEET OF THE SEWER, THE SEWER SHALL BE ENGAGED PER STANDARD PLAN 2023-1, CASE 8, TWO FEET ON EACH SIDE FROM THE POINT OF INTERFERENCE.
- ALL JOINTS BETWEEN CAST IRON PIPE AND VITRIFIED CLAY PIPE SHALL BE MADE WITH A RUBBER SLEEVE JOINT, TYPE "D" WITH BUSHING IF NECESSARY PER STANDARD SPECIFICATIONS SECTION 308-2.
- HOUSE LATERALS TO BE CONSTRUCTED WITH INVERTS AT PROPERTY LINE 8 FEET BELOW CURB GRADE EXCEPT AS NOTED.
- WYE OR TEE BRANCHES MAY BE USED FOR CONNECTIONS TO MAINLINE SEWERS EXCEPT AS NOTED.
- IF DURING THE COURSE OF CONSTRUCTION, IT IS DETERMINED THAT THERE IS LESS THAN FOUR FEET OF COVER OVER THE TOP OF STANDARD PLANS S-23 CASE 8, UNLESS OTHERWISE SPECIFIED, THE CONTRACTOR SHALL BE ENGAGED PER STANDARD PLANS S-23 CASE 8. UNLESS OTHERWISE SPECIFIED, ALL HOUSE SEWERS SHALL BE CONSTRUCTED IN A STRAIGHT ALIGNMENT AT RIGHT ANGLES FROM THE MAIN LINE SEWER EXCEPT WHERE THE PLAN OTHERWISE SHOWS. THE CONTRACTOR SHALL NOT INCREASE THE ANGLE OF LESS THAN 45° WITH THE MAIN SEWER ANY CHANGE IN ALIGNMENT SHALL BE REQUESTED IN WRITING BY THE PRIVATE ENGINEER.
- ALL STRUCTURES SHALL BE OTHER THAN SEWER MANHOLES PER STANDARD PLAN S-3, OR PRECAST CONCRETE SEWER MANHOLES PER STANDARD PLAN S-38, OR REINFORCED PRECAST CONCRETE MANHOLE PER STANDARD PLAN S-8, EXCEPT AS NOTED.
- REINFORCE ALL TRENCHES WITHIN PAVED AREAS TO MEET LOS ANGELES COUNTY PUBLIC WORKS OR CALIFORNIA STATE HIGHWAY REQUIREMENTS IN ACCORDANCE WITH THE PERMITS.
- FULL COMPLIANCE WITH SECTION 308-1.3.4 OF THE STANDARD SPECIFICATIONS WILL BE REQUIRED FOR BACKFILL IN STREETS. CONSTRUCTION OF BACKFILL COMPLETION AND QUALITY OF MATERIALS SHALL BE SUPERVISED BY A QUALIFIED CIVIL ENGINEER SHALL BE PROVIDED BY THE PERMITTEE PRIOR TO THE RESUMPTION OF A CERTIFICATE OF PUBLIC ACCEPTANCE.
- ALL BACKFILL AND FILL OUTSIDE OF STREET CURBS OR MANHOLES SHALL BE COMPACTED TO 90% OF MAXIMUM DENSITY AS DETERMINED BY ASTM D 1557-78 METHOD "D" UNLESS OTHERWISE SPECIFIED. THIS SHALL BE CERTIFIED BY A REGISTERED CIVIL ENGINEER AND CONSTRUCTION SHALL BE SUBMITTED TO THE CONSTRUCTION DIVISION OF THE DEPARTMENT OF PUBLIC WORKS PRIOR TO ACCEPTANCE OF THE WORK BY THE COUNTY.
- MANHOLE TOPS IN IMPROVED RIGHTS OF WAY TO BE LEVEL WITH FINISHED GRADE.
- SEWER TO BE HEDGED FOR LEAVAGE PER SECTION 308-1.4 OF THE STANDARD SPECIFICATION AND SPECIAL PROVISIONS.
- ALL WYES AND/OR HOUSE LATERALS ARE TO BE LOCATED AT LEAST FIVE FEET AWAY AND WHEN POSSIBLE NOT CLOSER THAN FIVE FEET TO ANY MANHOLE.

THIS SEWER PRIVATE CONTRACT ACCEPTED FOR PUBLIC USE
 10/6/05
 COUNTY OF LOS ANGELES
 DEPARTMENT OF PUBLIC WORKS
 LAND DEVELOPMENT DIVISION

ISSUE NO HOUSE LATERAL CONNECTION PERMITS UNTIL UTILITY SEWER P.C. 11489 IS ACCEPTED FOR PUBLIC USE BY THE COUNTY OF LOS ANGELES

PROFILE, ALIGNMENT AND GRADE OF SANITARY SEWERS
 TO BE CONSTRUCTED IN
 TR. NO. 44800-03 PC NO. 11490
 3 SHEETS: 6 PAGES
 COUNTY OF LOS ANGELES CALIFORNIA
 INDEX NO. 1215

HARRY W. STONE
 DIRECTOR OF PUBLIC WORKS

APPROVED BY: LAND DEVELOPMENT DIVISION
 By Ronald M. [Signature] 12-22-99
 SUBMITTED BY: [Signature] 12-21-99

APPROVED: COUNTY SANITATION DISTRICT OF LOS ANGELES CALIF.
 CHARLES W. CARRY - CHIEF ENGINEER AND GENERAL MANAGER
 COUNTY SANITATION DISTRICT NO. 32

DATE: 12-27-99

PRIVATE ENGINEERS NOTICE TO CONTRACTORS:
 THE EXISTENCE AND LOCATION OF ANY UNDERGROUND UTILITY PIPES OR STRUCTURES SHOWN ON THESE PLANS IS REQUIRED BY A SEARCH OF AVAILABLE RECORDS TO THE BEST OF OUR KNOWLEDGE. THESE ARE NOT TO BE CONSIDERED AS GUARANTEES. THE CONTRACTOR IS REQUIRED TO TAKE PRECAUTIONARY MEASURES TO PROTECT UTILITY LINES SHOWN AND ANY OTHER LINES NOT OF RECORD OR NOT SHOWN ON THE DRAWING. PRIOR TO EXCAVATION THE CONTRACTOR SHALL CALL THE 1-800-422-4133 TO VERIFY THE UNDERGROUND LOCATION OF GAS AND TELEPHONE LINES. THE CONTRACTOR SHALL ALSO CALL HIS OWN COMPANY OF GENERAL TELEPHONE COMPANY AT 1-800-448-4871 SO THAT THEY CAN MARK THE LOCATION OF UNDERGROUND TELEPHONE LINES.

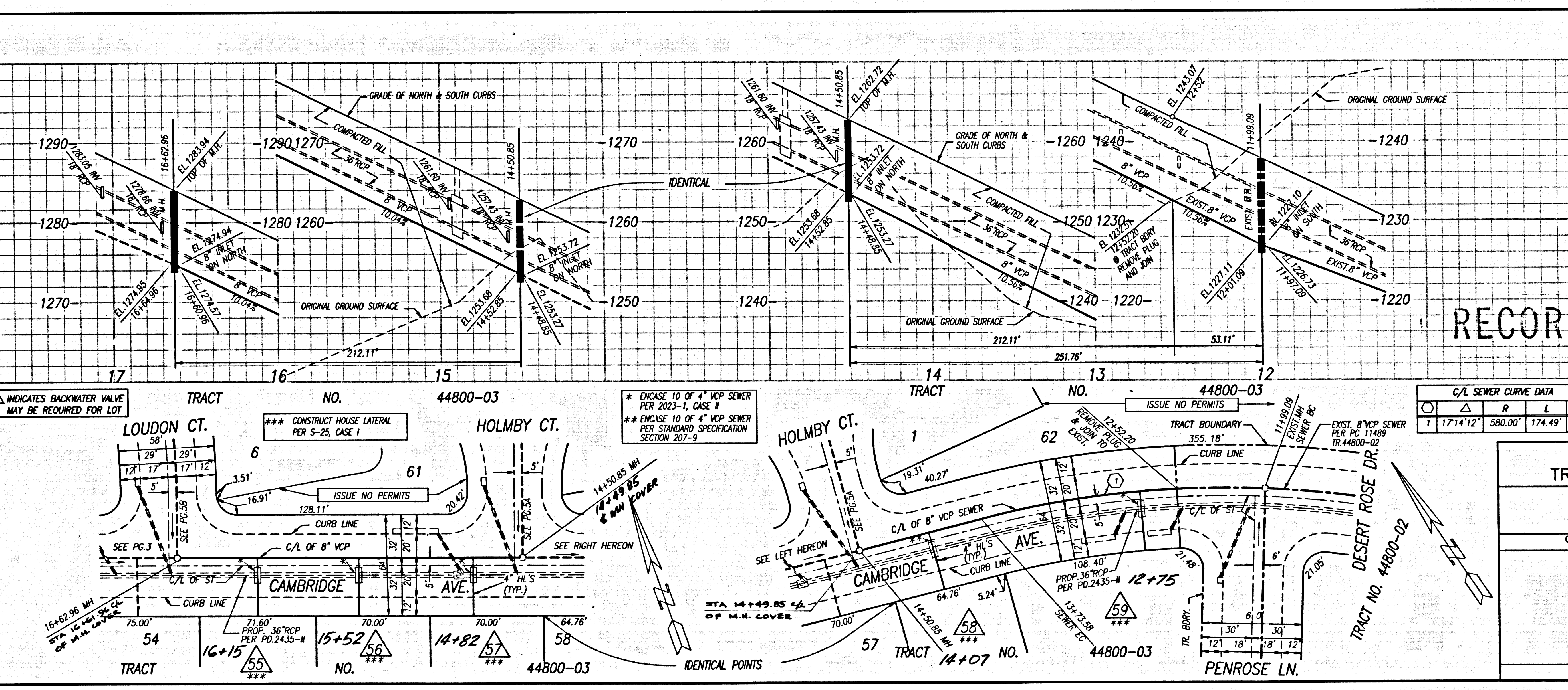
11/03/99
 RCE NO. 42890

RECORD PLANS

DOUBLE SCALE
 NO L.A. CO. CHARGE FOR CONNECTION
 SEE SAN. DISTRICT FOR SPECIAL CONNECTION CHARGES
 TEL. (562) 699-7411 EXT. 2727

55556

REGISTERED PROFESSIONAL ENGINEER
 CIVIL
 STATE OF CALIFORNIA
 NO. 42890
 11/03/99



C/A SEWER CURVE DATA

Curve	R	L	T
1	1714'12"	580.00'	174.49' 87.91'

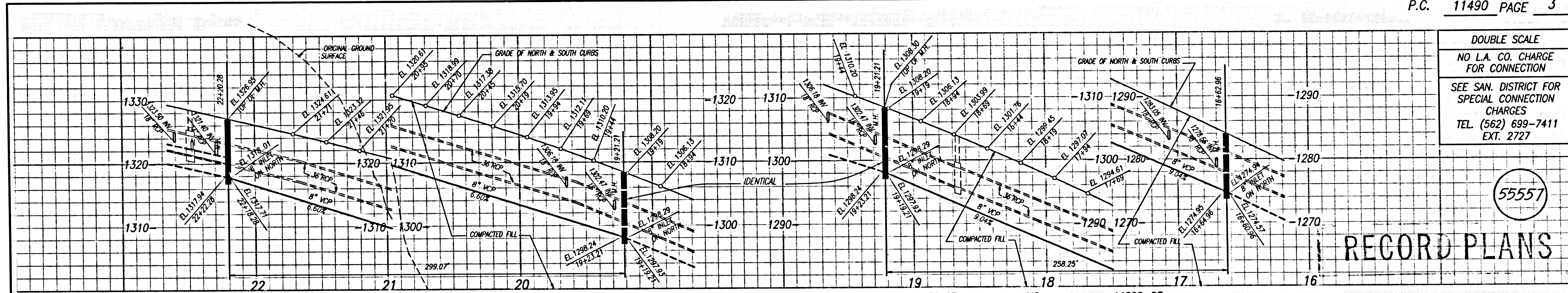
PLAN SCALE: 1" = 40'

SANITARY SEWER PLANS IN
 TR. NO. 44800-03 PC NO. 11490

REVIEWED BY: [Signature] 12/21/99
 COUNTY OF LOS ANGELES DEPARTMENT OF PUBLIC WORKS

SIKAND ENGINEERING ASSOCIATES
 CONSULTING ENGINEERS
 15330 BURBANK BLVD.,
 VAN NUYS, CALIFORNIA 91411 (818) 787-8550

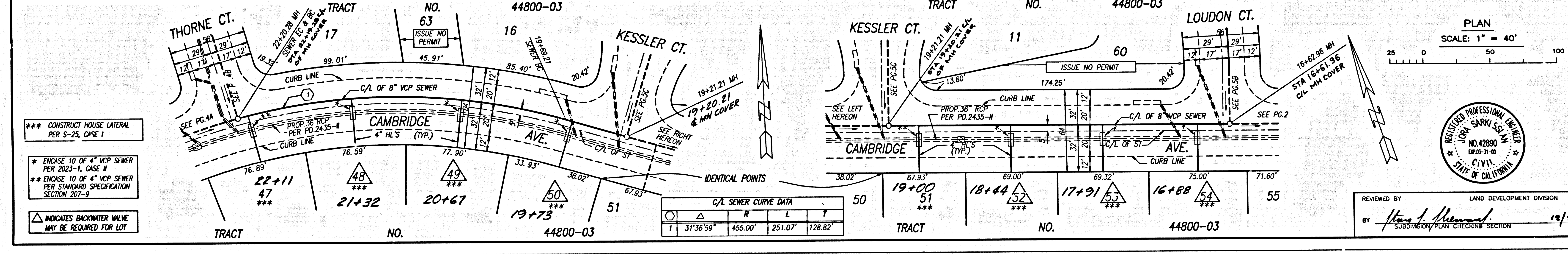
104211 09 20-00844.0M 9T



DOUBLE SCALE
NO L.A. CO. CHARGE FOR CONNECTION
SEE SAN. DISTRICT FOR SPECIAL CONNECTION CHARGES
TEL. (562) 699-7411 EXT. 2727

55557

RECORD PLANS

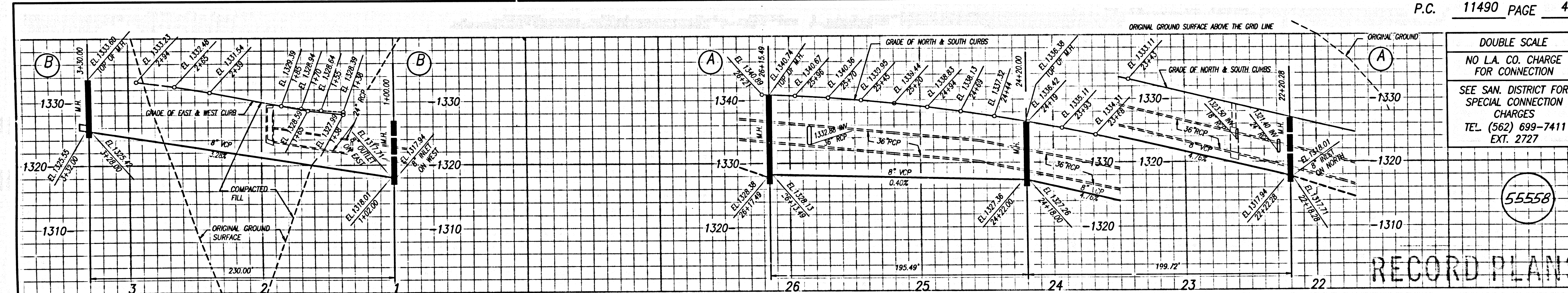


*** CONSTRUCT HOUSE LATERAL PER S-25, CASE 1
* ENCASE TO 10 OF 4" VCP SEWER PER 2023-1, CASE 8
** ENCASE TO 10 OF 4" VCP SEWER PER STANDARD SPECIFICATION SECTION 207-9
▲ INDICATES BACKWATER VALVE MAY BE REQUIRED FOR LOT

PLAN SCALE: 1" = 40'



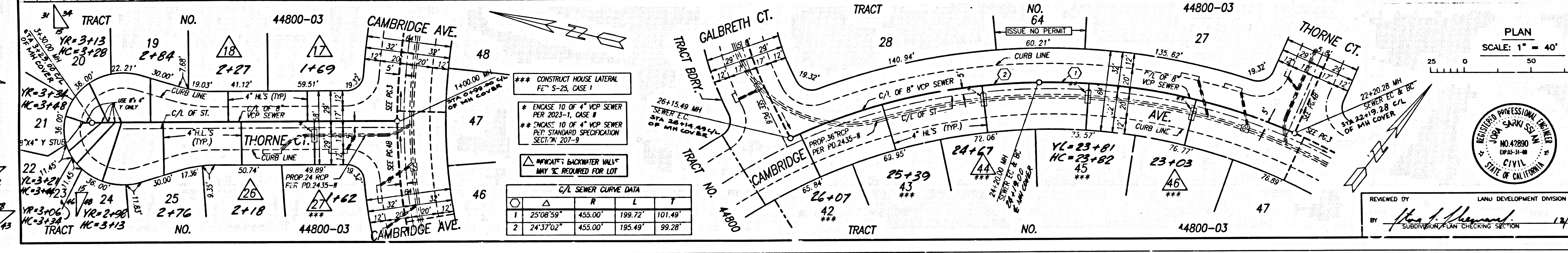
REVIEWED BY: LAND DEVELOPMENT DIVISION
BY: *Steven A. Sarno* 12/21/22



DOUBLE SCALE
NO L.A. CO. CHARGE FOR CONNECTION
SEE SAN. DISTRICT FOR SPECIAL CONNECTION CHARGES
TEL. (562) 699-7411 EXT. 2727

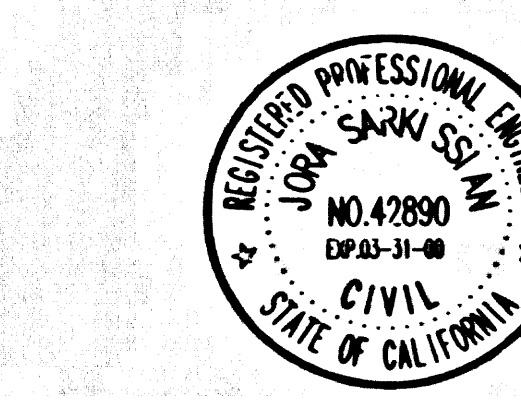
55558

RECORD PLANS



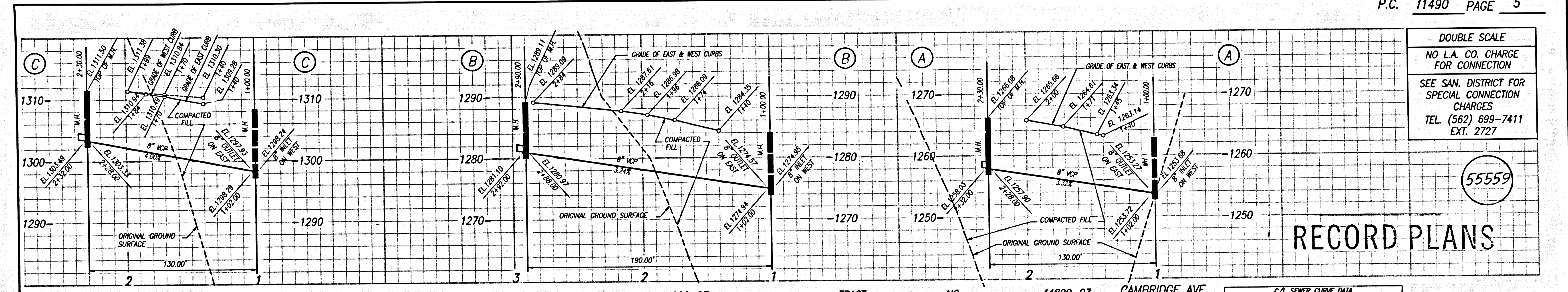
*** CONSTRUCT HOUSE LATERAL PER S-25, CASE 1
* ENCASE TO 10 OF 4" VCP SEWER PER 2023-1, CASE 8
** ENCASE TO 10 OF 4" VCP SEWER PER STANDARD SPECIFICATION SECTION 207-9
▲ INDICATES BACKWATER VALVE MAY BE REQUIRED FOR LOT

PLAN SCALE: 1" = 40'



REVIEWED BY: LAND DEVELOPMENT DIVISION
BY: *Steven A. Sarno* 12/21/22

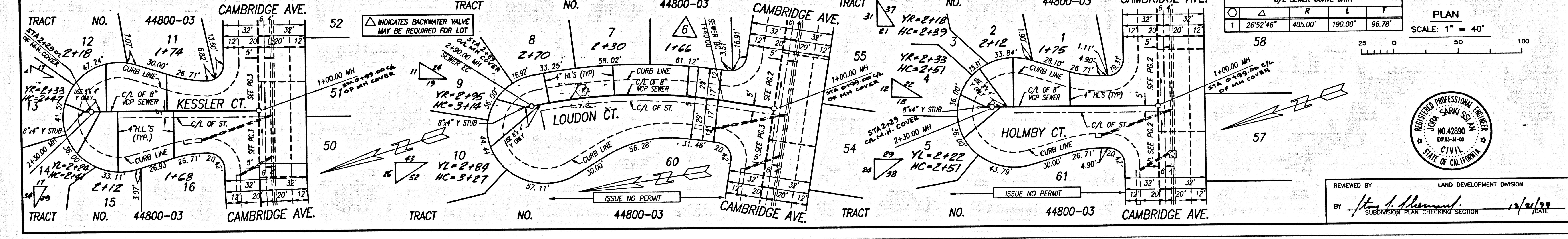
09411 03 BC 11490
 15' 00" 44800-03 15' 00" 44800-03



DOUBLE SCALE
NO L.A. CO. CHARGE FOR CONNECTION
SEE SAN. DISTRICT FOR SPECIAL CONNECTION CHARGES
TEL (562) 699-7411 EXT. 2727

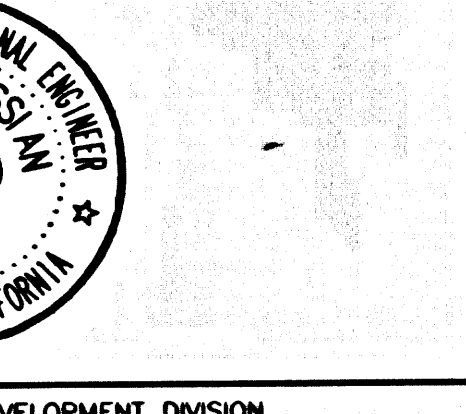
55559

RECORD PLANS

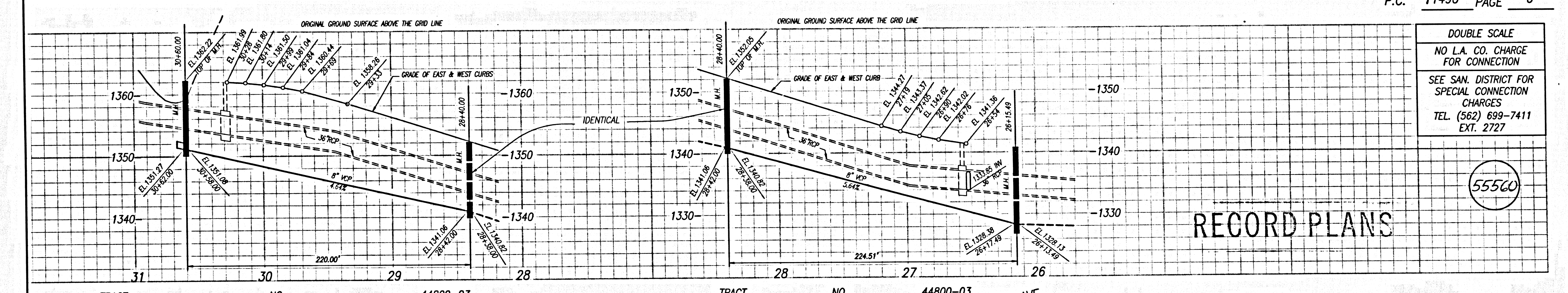


Station	R	L	T
1	26°32'46"	405.00'	190.00'
2			96.78'

PLAN SCALE: 1" = 40'



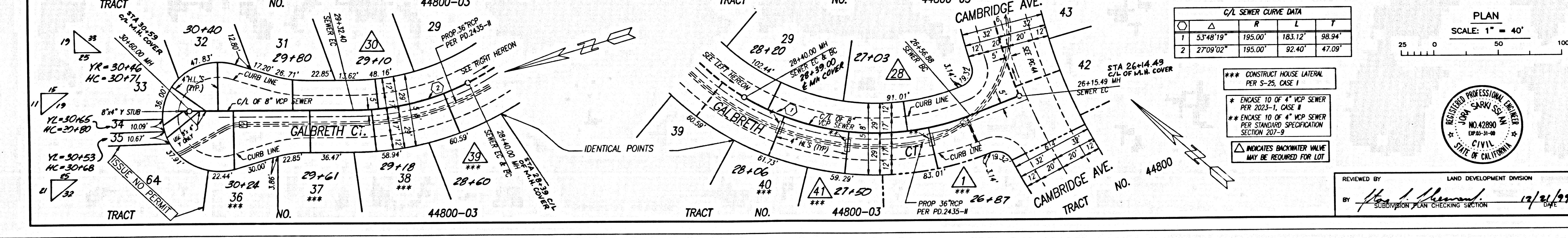
REVIEWED BY: [Signature] LAND DEVELOPMENT DIVISION
SUBDIVISION PLAN CHECKING SECTION 12/21/09



DOUBLE SCALE
NO L.A. CO. CHARGE FOR CONNECTION
SEE SAN. DISTRICT FOR SPECIAL CONNECTION CHARGES
TEL (562) 699-7411 EXT. 2727

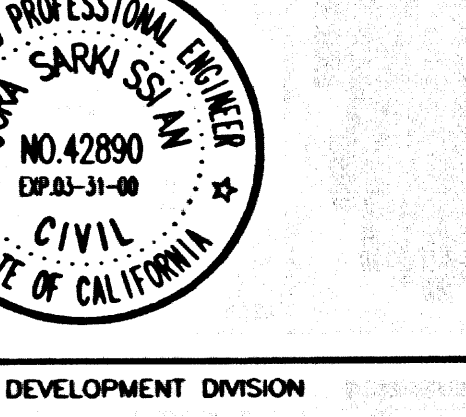
55560

RECORD PLANS



Station	R	L	T
1	53°48'19"	195.00'	183.12'
2	27°09'02"	195.00'	92.40'
			47.09'

PLAN SCALE: 1" = 40'



REVIEWED BY: [Signature] LAND DEVELOPMENT DIVISION
SUBDIVISION PLAN CHECKING SECTION 12/21/09

BC 11490 03-0084-03 14' 00' 44800-03