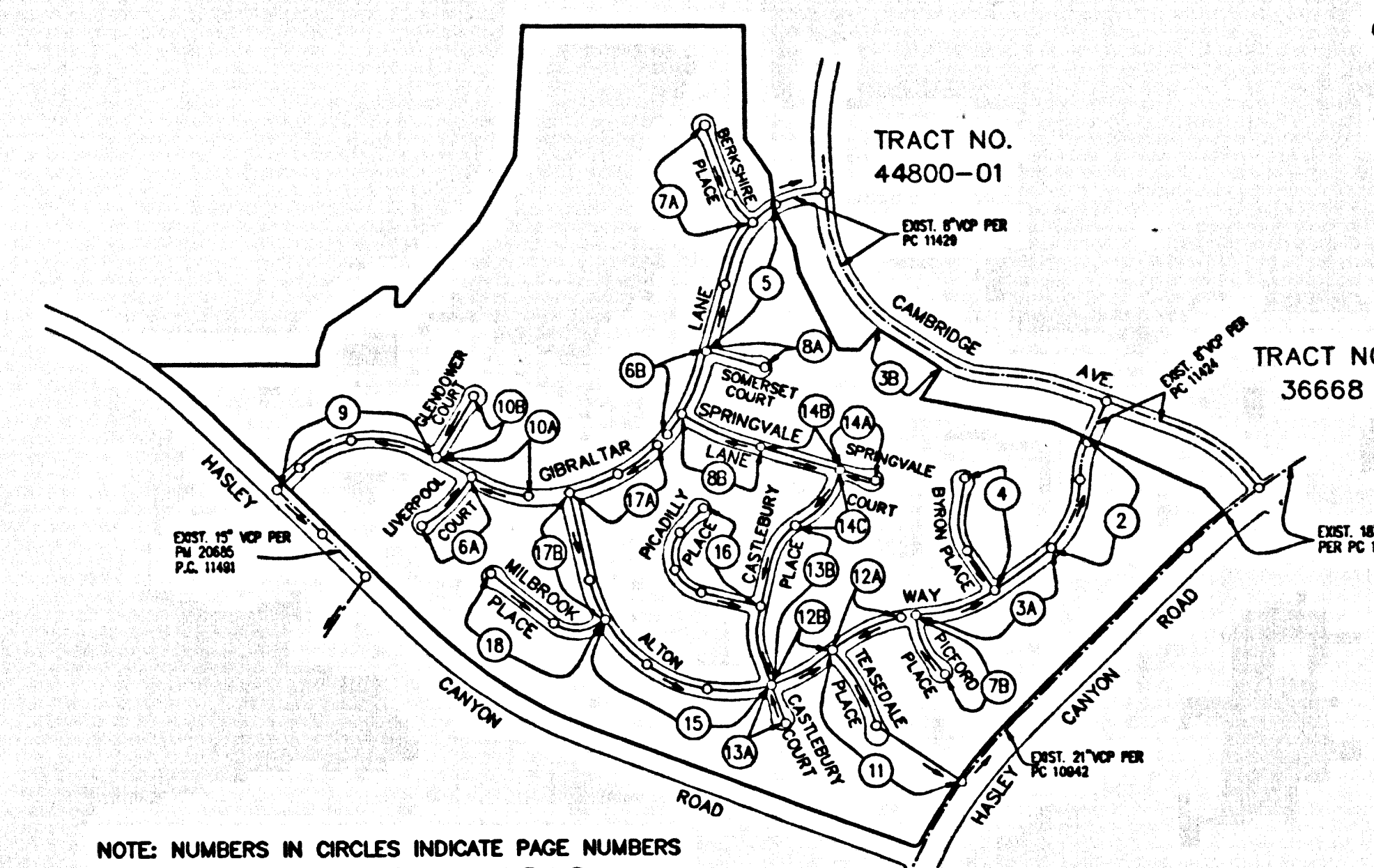


B. M. 3976 ELEV. 1065.685
 RDBM TAG IN E. R. 4 FT N BCR 70 FT N
 AND 32 FT E CL. INT. OLD ROAD & HASLEY
 CANYON ROAD OFF-RAMP
 NEWHALL QUAD. 19 83



NOTE: NUMBERS IN CIRCLES INDICATE PAGE NUMBERS
 INDEX MAP - 1216
 SCALE 1" = 600'
 P.C. 11505 TRACT No. 45084
 THOMAS GUIDE PAGE 4459-65

BUILDING AND SAFETY
 LOCAL OFFICE
 SANTA CLARITA

LOT 295 THROUGH 307 ARE RESTRICTED TO NO CONSTRUCTION OF RESIDENTIAL BUILDING AND WILL NOT BE SERVED BY THIS SEWER.

NO HOUSE LATERAL CONNECTION PERMITS UNTIL OUTLET SEWER PC11424, PC 11429 AND PC 11434 ARE ACCEPTED FOR PUBLIC USE BY THE COUNTY OF LOS ANGELES.

STORMWATER POLLUTION CONTROL REQUIREMENTS FOR SEWER CONSTRUCTION

- Eroded sediments and other pollutants must be retained on site and may not be transported from the site via street flow, creeks, open drains, natural drainage courses, or wind.
- Stockpiles of earth and other construction related materials must be protected from being transported from the site by the forces of wind or water.
- Fuels, oils, solvents, and other toxic materials must be stored in accordance with their labels and are not to contaminate the soil and surface waters. All approved storage containers are to be protected from the weather. Spills must be cleaned up immediately and disposed of in a proper manner. Spills may not be washed into the drainage system.
- Excess or waste concrete may not be washed into the public way or any other drainage system. Provisions shall be made to retain concrete wastes on site until they can be disposed of as solid waste.
- Trash and construction-related solid wastes must be deposited into a covered receptacle to prevent contamination of rainwater and disposal by wind.
- Sediments and other materials may not be tracked from the site by vehicle traffic. The construction entrance roadways must be stabilized so as to inhibit sediments from being deposited into the public way. Accidental depositions must be swept up immediately and may not be washed down by rain or other means.
- Any slopes with disturbed soils or denuded of vegetation must be stabilized so as to inhibit erosion by wind and water.

- LEGEND
- CA001 - DEWATERING OPERATIONS
 - CA002 - PAVING OPERATIONS
 - CA003 - STRUCTURE CONSTRUCTION AND PAINTING
 - CA010 - MATERIAL DELIVERY AND STORAGE
 - CA020 - SOLID WASTE MANAGEMENT
 - CA021 - HAZARDOUS WASTE MANAGEMENT
 - CA023 - CONCRETE WASTE MANAGEMENT
 - CA024 - SANITARY/SEWIC WASTE MANAGEMENT
 - CA030 - VEHICLE AND EQUIPMENT CLEANING
 - CA031 - VEHICLE AND EQUIPMENT MAINTENANCE
 - CA032 - VEHICLE AND EQUIPMENT MAINTENANCE
 - ES002 - PRESERVATION OF EXISTING VEGETATION
 - ES010 - SEEDING AND PLANTING
 - ES011 - MULCHING
 - ES020 - GEOTEXTILES AND MATS
 - ES021 - EROSION CONTROLS
 - ES022 - TEMPORARY STREAM CROSSING
 - ES023 - CONSTRUCTION ROAD STABILIZATION
 - ES024 - STABILIZED CONSTRUCTION ENTRANCE
 - ES025 - STORM DRAIN INLET PROTECTION

PRIVATE CONTRACT SEWER GENERAL NOTES

- The following general notes are to be included on Page 1 of all Private Contract Sewer Plans:
 - A sewer construction permit shall be obtained and a fee paid for construction inspection and record plans to the Department of Public Works at the Permit Counter, 800 South Fremont Avenue, 8th Floor, Alhambra, at least 72 hours prior to starting work under this permit. Copies of all other required permits, such as Flood Excavation, California, etc., must be filed with the permit application.
 - Prior to issuance of any permit, the contractor shall file a permit for excavations and trenches from the State of California Division of Industrial Safety and a Certificate of Worker's Compensation Insurance with the Department of Public Works on the Certificate Holder to be notified 30 days prior to completion of work.
 - If work is done in a State Highway, a permit must be obtained from the State of California Division of Highways, 120 South Spring Street, Los Angeles, California.
 - When work is within a contract city, the contractor must contact the Director of Public Works of that city, to determine the location to pay the inspection fee.
 - The contractor shall contact the district office listed on the "Application for Construction Permit" to arrange for an acceptable construction start date.
 - Approval of this plan by the County of Los Angeles does not constitute a representation as to accuracy of the location of or the existence or non-existence of any underground utility pipe or structure within the limits of this project. This note applies to all pages.
 - All work shall be in accordance with the latest approved edition of the "Standard Specifications for Public Works Construction, including supplements and the latest Special Provisions for Construction of Sanitary Sewers and shall be prosecuted only in the presence of the Department of Public Works."
 - The contractor's attention is directed to Section 7-10.4.1 of the Standard Specifications for Public Works Construction in regard to safety orders and shall conform to the "Minimum Public Safety Requirements" as shown on Los Angeles Department of Public Works' Standard 5-2.
 - Elevations are in feet above U.S.C. & G.S. sea level datum of 1929.
 - No revisions shall be made in these plans without the approval of the Director of Public Works.
 - No representative of the Department of Public Works will survey or lay out any portion of the project for which this improvement is to be constructed as shown on plans and profiles. Grade points for top of curbs, centerlines of streets, or centerlines of alleys, are shown by crosses on profiles at points between designated points. The grade shall be established so as to conform to a straight line drawn between said designated points.
 - The private engineer shall furnish the Department of Public Works with grade sheets and stationing for all house laterals and "T" branches and shall provide stakes for them at their proper locations with stationing plainly marked. All house laterals shall be constructed in a straight alignment of right angles from the main line sewer except as shown on the plans. House laterals from chimneys shall not have an angle of less than 45 degrees with the M.L. sewer. Any change in alignment shall be requested in writing by the private engineer.
 - The private engineer shall furnish the house lateral depth at the property line below the top of curb elevation for each house lateral on the grade sheet.

CONSTRUCTION NOTES

- Provide survey stakes on the property line or property lines produced at right angles to the sewer line at the centerline of each manhole.
- Verified day pipe joints shall be type "D" or "U" per standard specifications section 208-2.
- If a pipe is to be installed within three feet of the sewer, the sewer shall be encased per standard plan 5-23, case II, two feet on each side from the point of interference.
- All joints between cast iron pipe and vitrified clay shall be made with a rubber curb joint, type "D" (with bushing if necessary) per standard specifications section 208-2.
- House laterals to be constructed with inverts at the property line 8 feet below curb grade except as noted.
- Wye or tee branches may be used for connections to the mainline sewers except as noted.
- If during the course of construction, it is determined that there is less than four feet of cover over the top of a mainline or house lateral V.C.P. sewer which is not indicated on the plans, the pipes shall be encased per standard plan 5-23, case II, unless otherwise approved by the director of Public Works.
- All structures shall be either brick sewer manholes per standard plan 5-3 or precast concrete sewer manholes per standard plan 5-3b, or reinforced precast concrete manholes per standard plan 5-8, except as noted.
- Resurface all trenches within paved areas to meet Los Angeles County Public Works or California State Highway requirements in accordance with the permit.
- Full compliance with section 306-1.3.4 of the standard specification will be required for backfill in street certification of a certificate of public acceptance.
- All backfill and fills outside of the street right of way shall be compacted to 90% of the maximum density as determined by ASTM soil compaction test D 1557-78 method "D" unless otherwise specified. This shall be certified by a qualified civil engineer. This certification shall be submitted to the Construction Division of the Department of Public Works prior to the acceptance of the work by the county.
- Manhole tops in unimproved rights of way to be six inches above finished grade.
- Sewers to be tested for leakage per section 306-1.4 of the standard specifications and special provisions.

THIS SEWER PRIVATE CONTRACT ACCEPTED FOR PUBLIC USE
 10-06-2005
 COUNTY OF LOS ANGELES
 DEPARTMENT OF PUBLIC WORKS
 LAND DEVELOPMENT DIVISION

RECORD PLANS

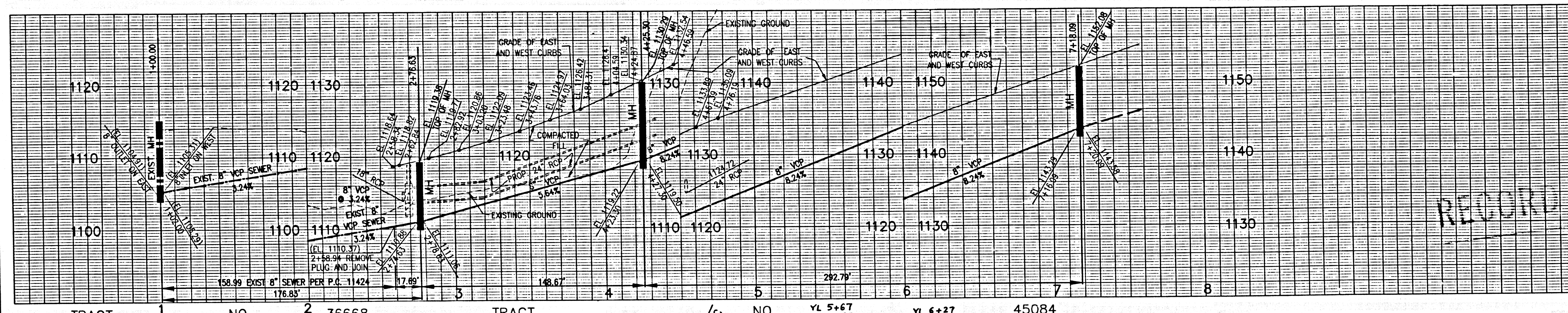
PAGE 1
 PROFILE, ALIGNMENT AND GRADE OF
SANITARY SEWERS
 TO BE RECONSTRUCTED IN
 TRACT No. 45084 PC NO. 11505
 9 SHEETS: 18 PAGES; INDEX 1216
 COUNTY OF LOS ANGELES CALIFORNIA

HARRY W. STONE DIRECTOR OF PUBLIC WORKS
 APPROVED BY LAND DEVELOPMENT DIVISION
 BY *Thomas W. Howard* 10/16/00
 SUBMITTER
 SUBDIVISION PLAN CHECKING SECTION DATE

APPROVED: COUNTY SANITATION DISTRICT
 OF LOS ANGELES CALIF.
 JAMES F. STAHM, CHIEF ENGINEER AND GENERAL MANAGER 55794
 COUNTY SANITATION DISTRICT NO. 32
 BY *J. M. [Signature]* DATE: 10-16-00
 OFFICE ENGINEER

PRIVATE ENGINEERS NOTICE TO CONTRACTORS:
 THE EXISTENCE AND LOCATION OF ANY UNDERGROUND UTILITY PIPES OR STRUCTURES SHOWN ON THESE PLANS IS REQUIRED BY A SEARCH OF AVAILABLE RECORDS TO THE BEST OF OUR KNOWLEDGE. THERE ARE NO EXISTING UTILITIES EXCEPT AS SHOWN ON THIS MAP. THE CONTRACTOR IS REQUIRED TO TAKE PRECAUTIONARY MEASURES TO PROTECT THE UTILITY LINES SHOWN AND ANY OTHER LINES NOT OF RECORD OR NOT SHOWN ON THIS DRAWING. PRIOR TO EXCAVATION THE CONTRACTOR SHALL CALL TOLL FREE 1-800-422-4133 TO VERIFY THE UNDERGROUND LOCATION OF GAS AND TELEPHONE LINES. THE CONTRACTOR SHALL ALSO CALL MR. RAY CHAMBERS OF GENERAL TELEPHONE COMPANY AT 1-800-940-4871 SO THAT THEY CAN MARK THE LOCATION OF UNDERGROUND TELEPHONE LINES.
 RICE NO. 09-07-2000
 DATE

P.C. 11505 PAGE 2



CURVE TABLE

CURVE	DELTA	RADIUS	LENGTH	TANGENT
1	44°44'07"	375.00'	292.79'	154.32'
2	23°20'15"	365.00'	148.67'	75.38'

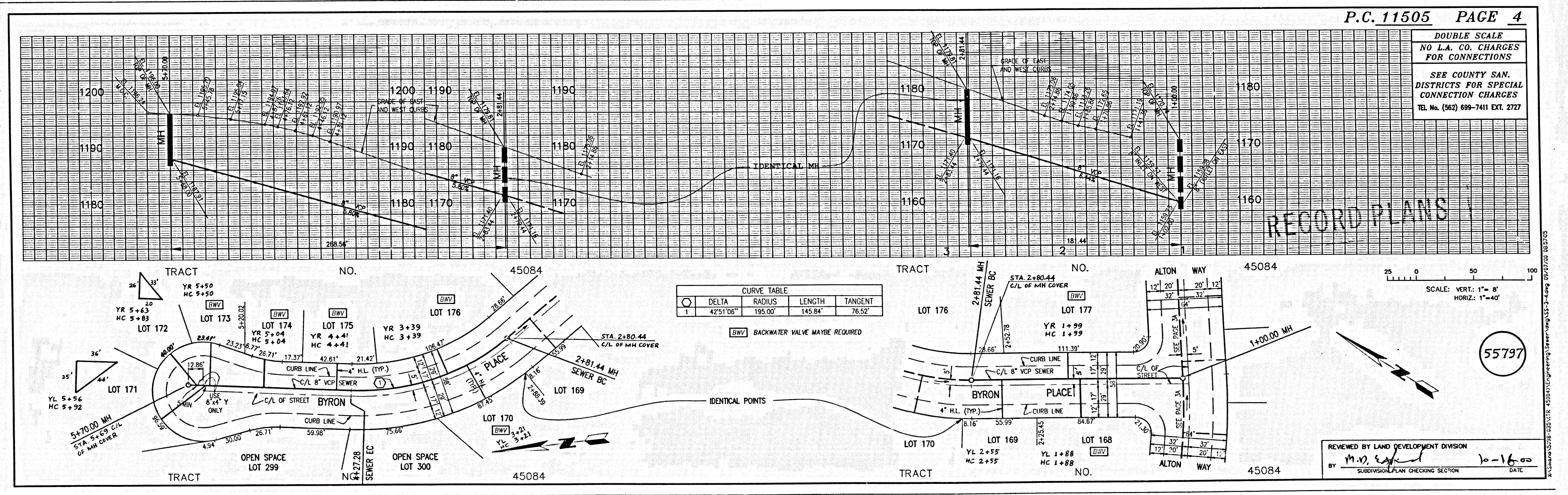
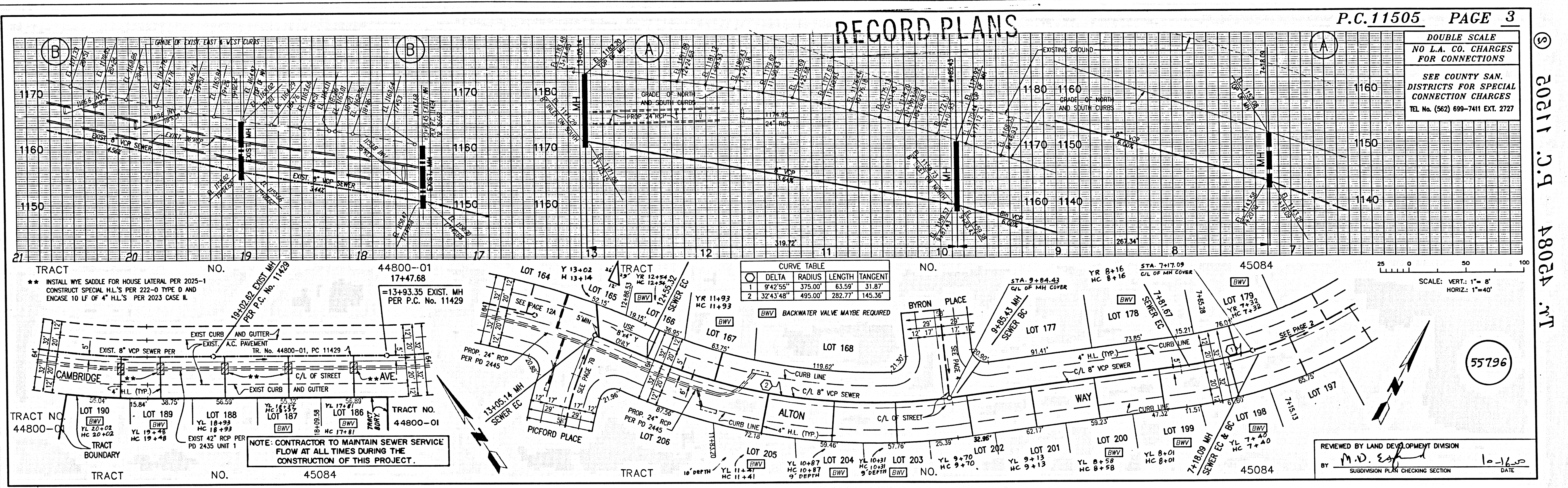
DOUBLE SCALE
 NO L.A. CO. CHARGES FOR CONNECTIONS
 SEE COUNTY SAN. DISTRICTS FOR SPECIAL CONNECTION CHARGES
 TEL. No. (562) 699-7411 EXT. 2727

SANITARY SEWER PLANS IN
 TRACT NO. 45084 PC NO. 11505
 REVISION BY LAND DEVELOPMENT DIVISION
 BY *M. O. [Signature]* 10-16-00
 SUBDIVISION PLAN CHECKING SECTION DATE
 COUNTY OF LOS ANGELES DEPARTMENT OF PUBLIC WORKS

NO. 42890
 EXP. 3-31-04
 STATE OF CALIFORNIA
 PROFESSIONAL ENGINEER
 DATE: 09/07/00

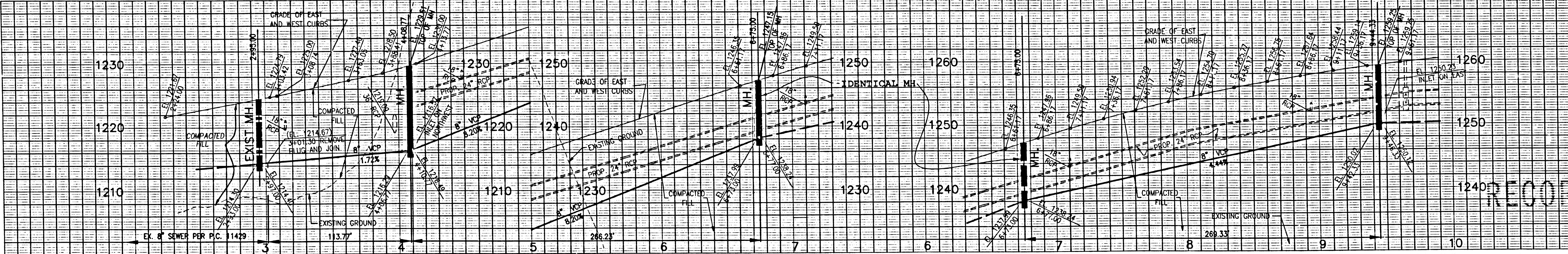
SIKAND ENGINEERING ASSOCIATES
 CONSULTING ENGINEERS
 15230 BURBANK BLVD.
 VAN NUYS, CALIFORNIA 91411 (818) 787-8550

RECORD PLANS

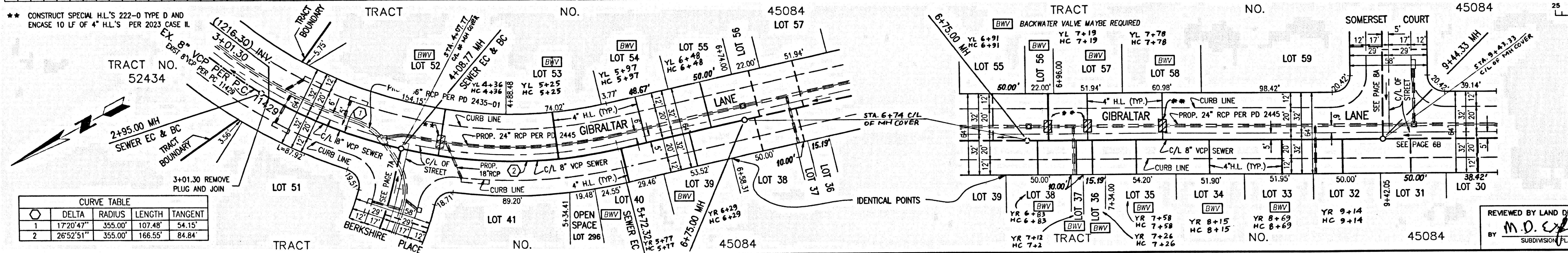


L.W. 42084 P.C. 11202

L.W. 42084 P.C. 11202



DOUBLE SCALE
NO L.A. CO. CHARGES
FOR CONNECTIONS
SEE COUNTY SAN.
DISTRICTS FOR SPECIAL
CONNECTION CHARGES
TEL. No. (562) 699-7411 EXT. 2727

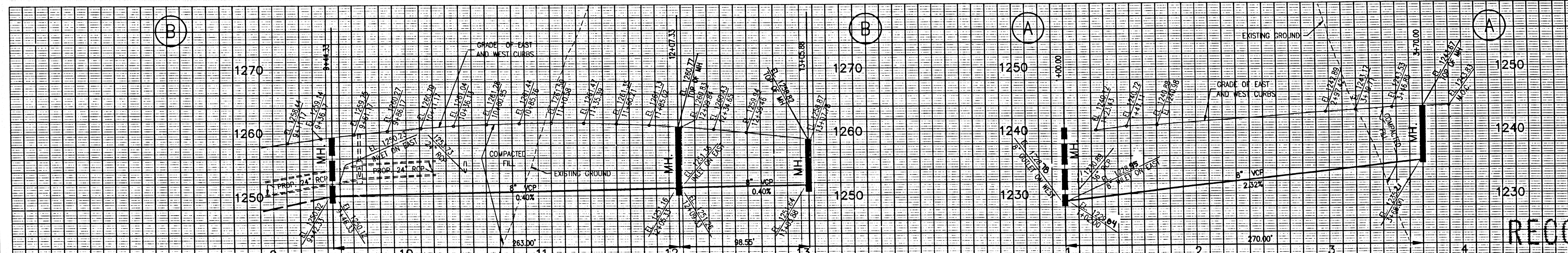


CURVE TABLE			
DELTA	RADIUS	LENGTH	TANGENT
1	1720.47'	355.00'	107.48'
2	2652.51'	355.00'	166.55'

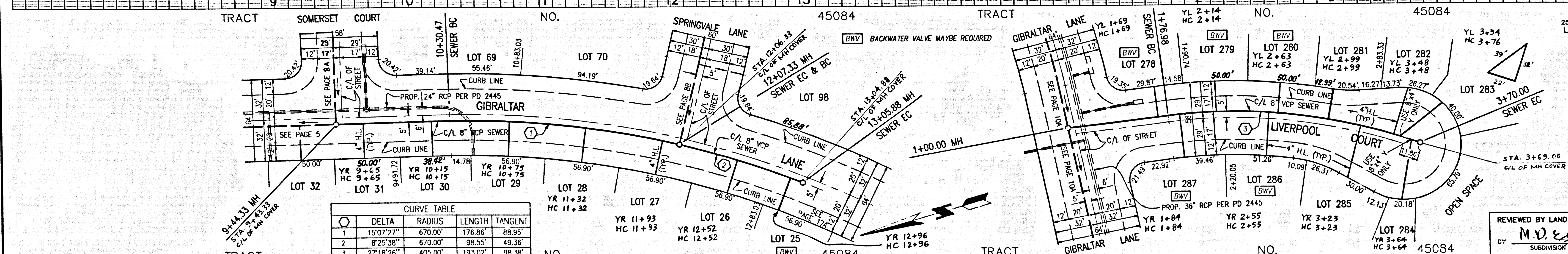
SCALE: VERT: 1"=8'
HORIZ: 1"=40'

55798

REVIEWED BY LAND DEVELOPMENT DIVISION
M.D. [Signature] 10-16-00
SUBDIVISION PLAN CHECKING SECTION DATE



DOUBLE SCALE
NO L.A. CO. CHARGES
FOR CONNECTIONS
SEE COUNTY SAN.
DISTRICTS FOR SPECIAL
CONNECTION CHARGES
TEL. No. (562) 699-7411 EXT. 2727



CURVE TABLE			
DELTA	RADIUS	LENGTH	TANGENT
1	1507.27'	670.00'	176.86'
2	825.38'	670.00'	98.55'
3	2718.26'	405.00'	193.02'

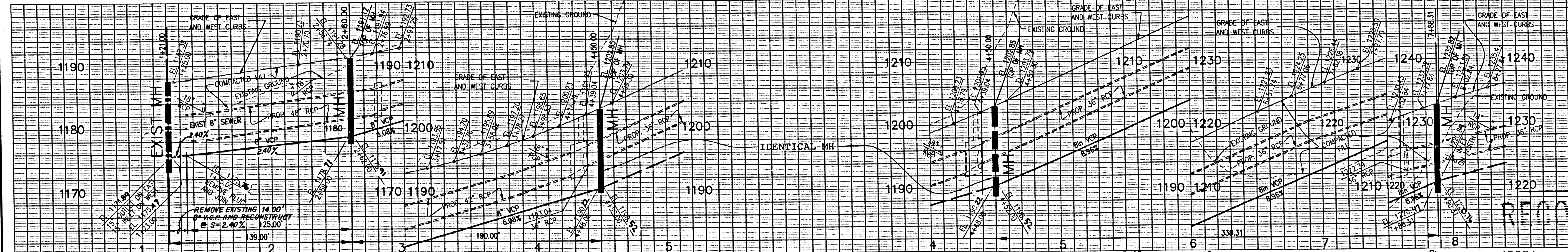
SCALE: VERT: 1"=8'
HORIZ: 1"=40'

55799

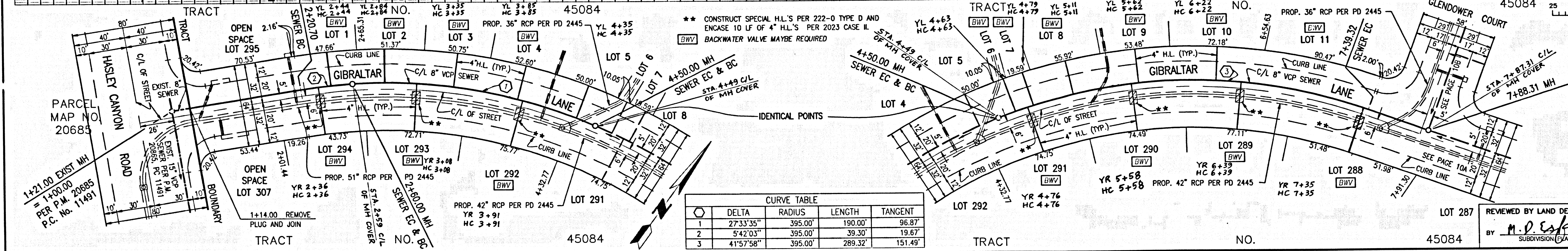
REVIEWED BY LAND DEVELOPMENT DIVISION
M.D. [Signature] 10-16-00
SUBDIVISION PLAN CHECKING SECTION DATE

L.V. 42084 B.C. 11202

L.V. 42084 B.C. 11202



DOUBLE SCALE
NO L.A. CO. CHARGES
FOR CONNECTIONS
SEE COUNTY SAN.
DISTRICTS FOR SPECIAL
CONNECTION CHARGES
TEL No. (562) 699-7411 EXT. 2727

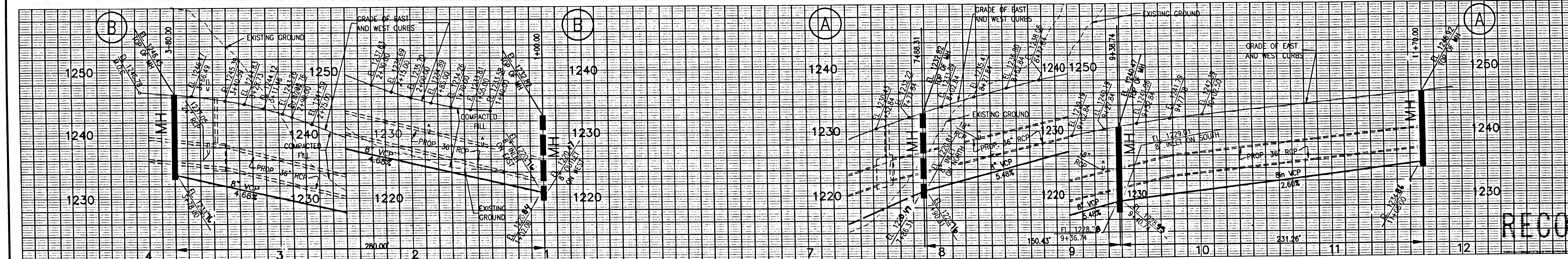


REVIEWED BY LAND DEVELOPMENT DIVISION
BY M.D. [Signature] 10-16-00
SUBDIVISION PLAN CHECKING SECTION DATE

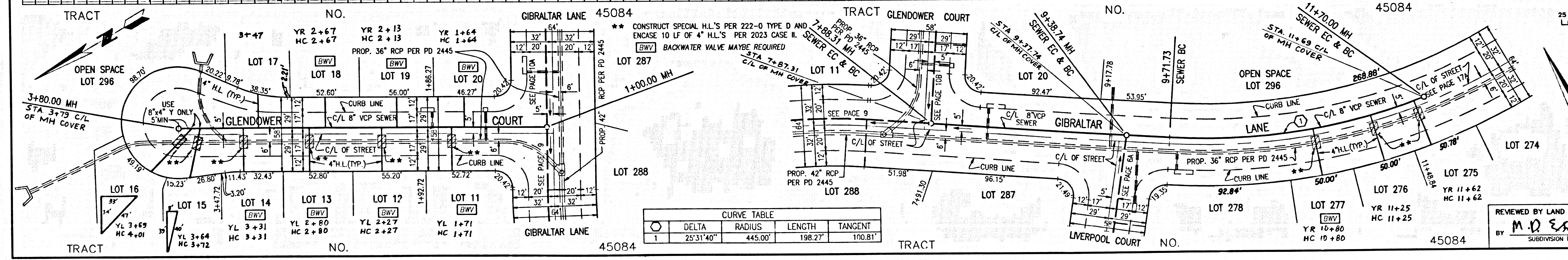
L.V. 42084 P.C. 11202

RECORD PLANS

55802



DOUBLE SCALE
NO L.A. CO. CHARGES
FOR CONNECTIONS
SEE COUNTY SAN.
DISTRICTS FOR SPECIAL
CONNECTION CHARGES
TEL No. (562) 699-7411 EXT. 2727

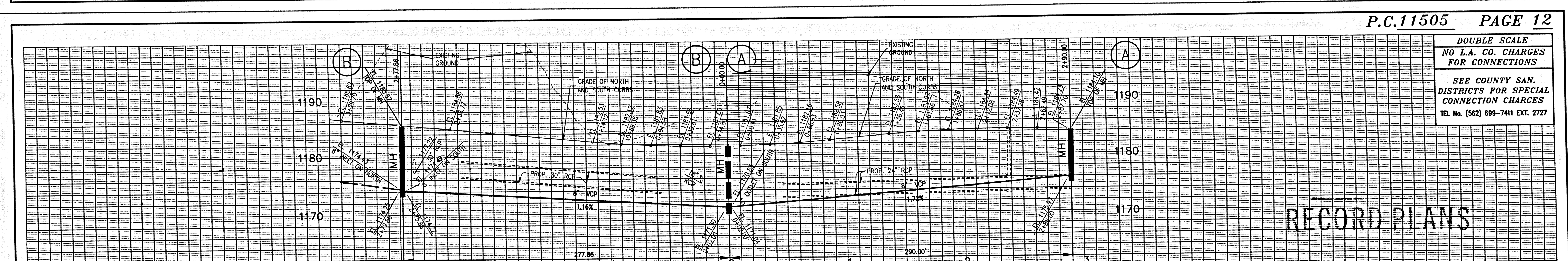
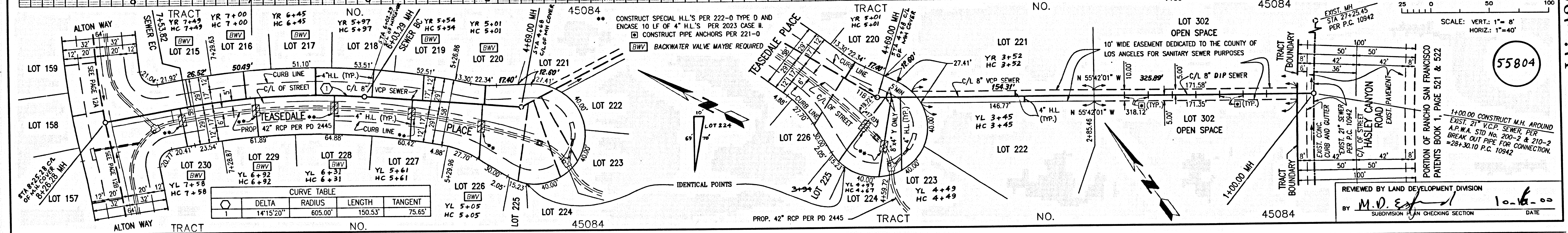
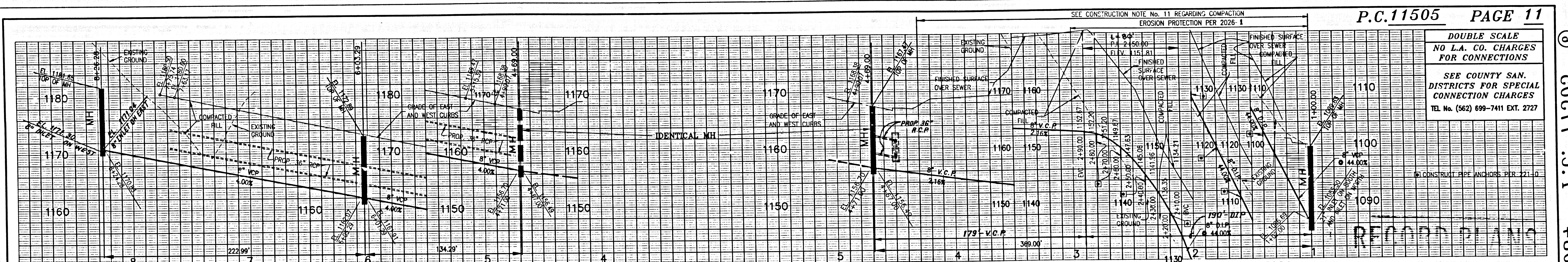


REVIEWED BY LAND DEVELOPMENT DIVISION
BY M.D. [Signature] 10-16-00
SUBDIVISION PLAN CHECKING SECTION DATE

L.V. 42084 P.C. 11202

RECORD PLANS

55803

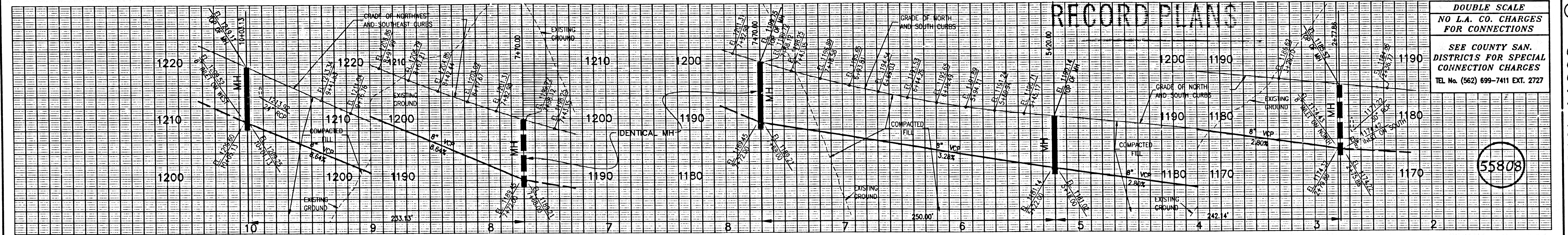


CURVE TABLE			
DELTA	RADIUS	LENGTH	TANGENT
1	2727.51"	605.00'	290.00'
2	2506.23"	545.00'	238.81'

J.W. 42084 B.C. 11202

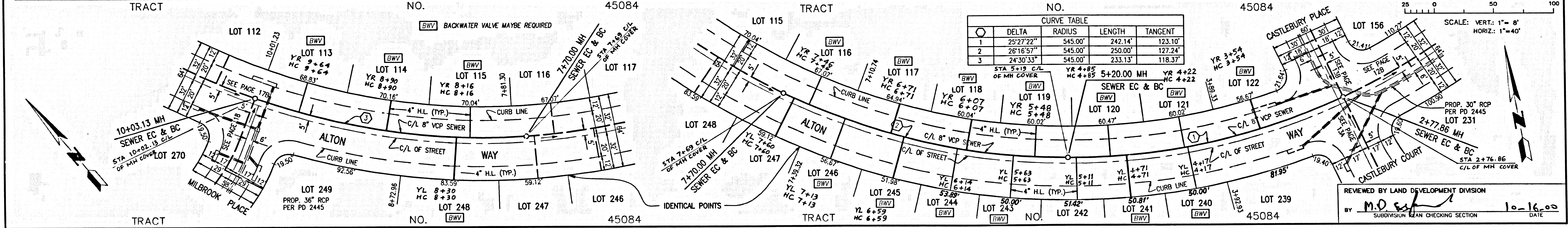
55804

55805



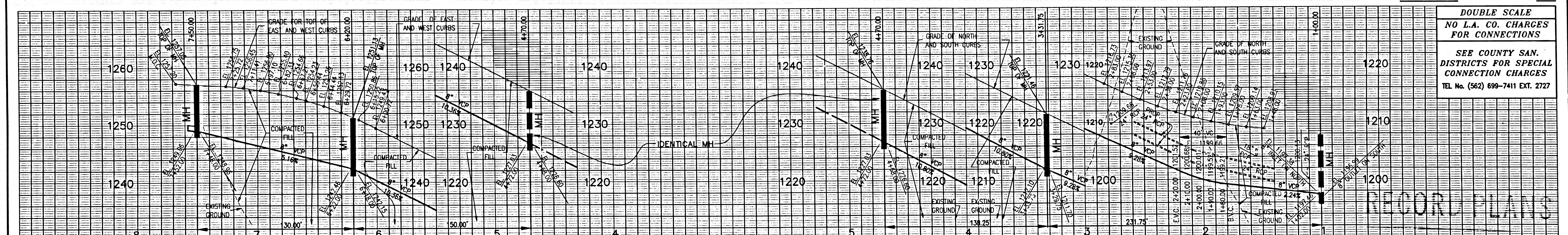
DOUBLE SCALE
NO L.A. CO. CHARGES
FOR CONNECTIONS
SEE COUNTY SAN.
DISTRICTS FOR SPECIAL
CONNECTION CHARGES
TEL No. (562) 699-7411 EXT. 2727

55808



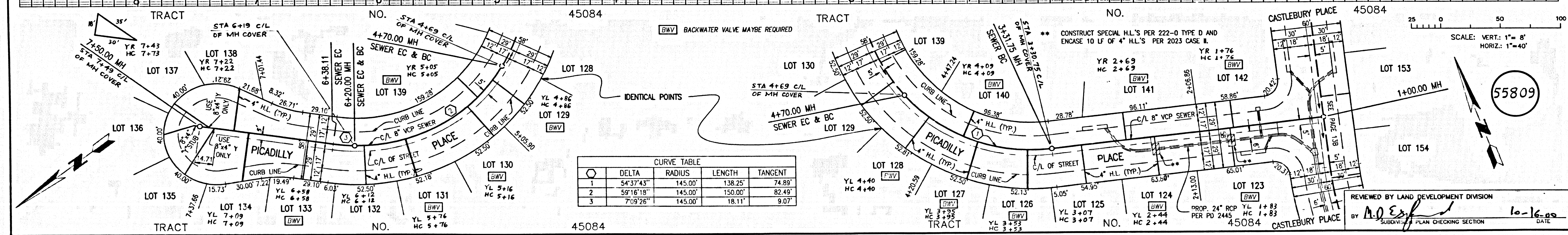
SCALE: VERT. 1"=8'
HORIZ. 1"=40'

REVIEWED BY LAND DEVELOPMENT DIVISION
BY M.D. Esch
SUBDIVISION PLAN CHECKING SECTION
DATE 10-16-00



DOUBLE SCALE
NO L.A. CO. CHARGES
FOR CONNECTIONS
SEE COUNTY SAN.
DISTRICTS FOR SPECIAL
CONNECTION CHARGES
TEL No. (562) 699-7411 EXT. 2727

55809

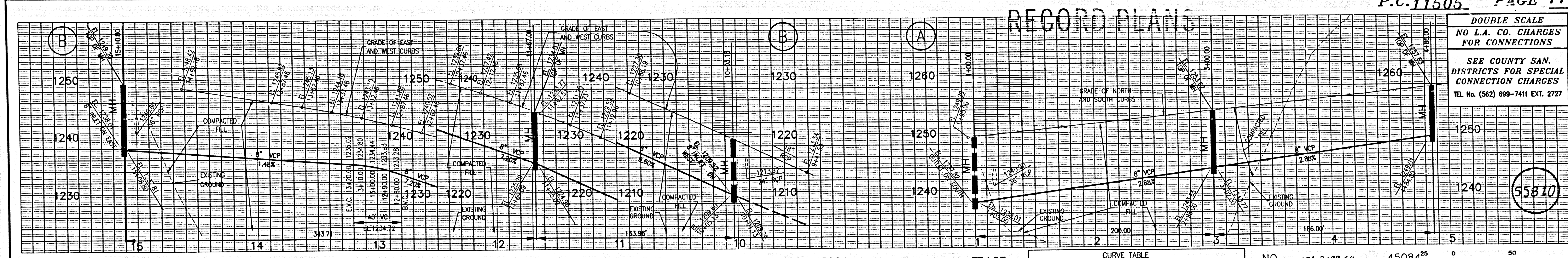


SCALE: VERT. 1"=8'
HORIZ. 1"=40'

REVIEWED BY LAND DEVELOPMENT DIVISION
BY M.D. Esch
SUBDIVISION PLAN CHECKING SECTION
DATE 10-16-00

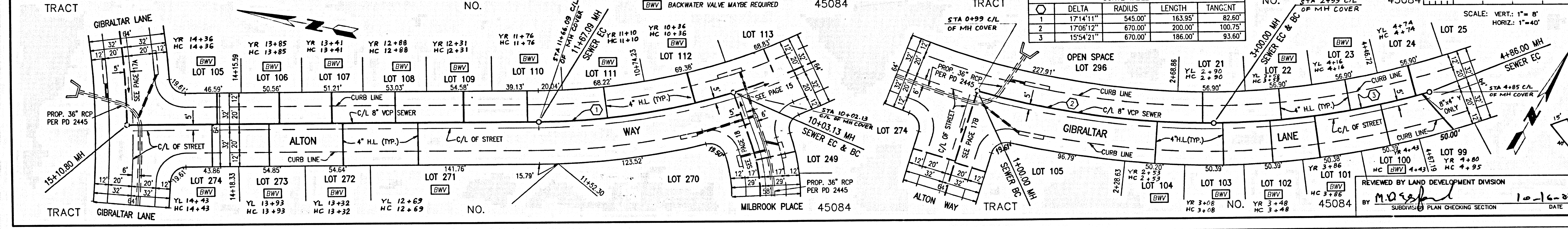
L.A. 42084 B.C. 11202

L.A. 42084 B.C. 11202



DOUBLE SCALE
NO L.A. CO. CHARGES
FOR CONNECTIONS
SEE COUNTY SAN.
DISTRICTS FOR SPECIAL
CONNECTION CHARGES
TEL. NO. (562) 699-7411 EXT. 2727

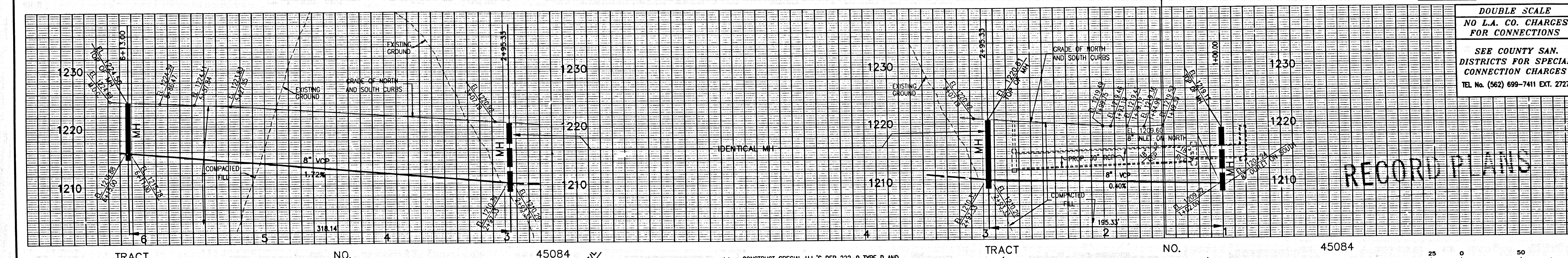
55810



CURVE TABLE			
DELTA	RADIUS	LENGTH	TANGENT
1 17°41'11"	345.00'	163.95'	82.60'
2 17°06'12"	670.00'	200.00'	100.75'
3 15°54'21"	670.00'	186.00'	93.60'

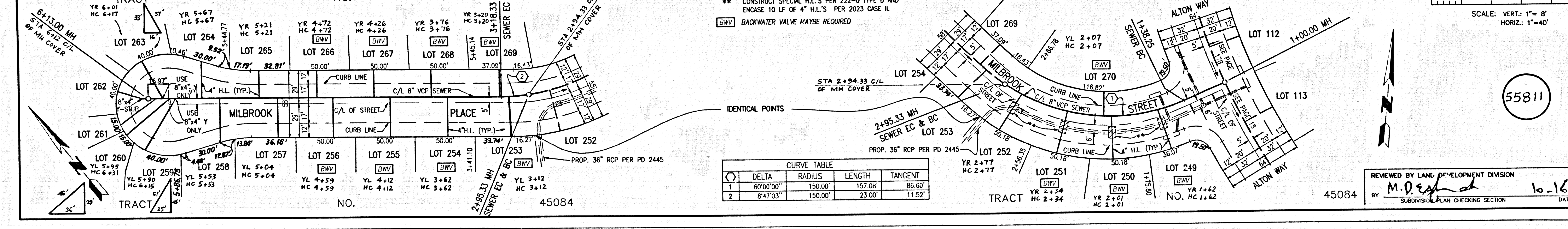
REVIEWED BY LAND DEVELOPMENT DIVISION
SUBDIVISION PLAN CHECKING SECTION
DATE 10-16-80

L.A. 42084 B.C. 11202



DOUBLE SCALE
NO L.A. CO. CHARGES
FOR CONNECTIONS
SEE COUNTY SAN.
DISTRICTS FOR SPECIAL
CONNECTION CHARGES
TEL. NO. (562) 699-7411 EXT. 2727

55811



** CONSTRUCT SPECIAL H.L.'S PER 222-0 TYPE D AND
ENCASE 10 LF OF 4" H.L.'S PER 223-0 CASE II

BACKWATER VALVE MAYBE REQUIRED

CURVE TABLE			
DELTA	RADIUS	LENGTH	TANGENT
1 80°00'00"	150.00'	157.08'	86.60'
2 8°47'03"	150.00'	23.00'	11.52'

REVIEWED BY LAND DEVELOPMENT DIVISION
SUBDIVISION PLAN CHECKING SECTION
DATE 10-16-80