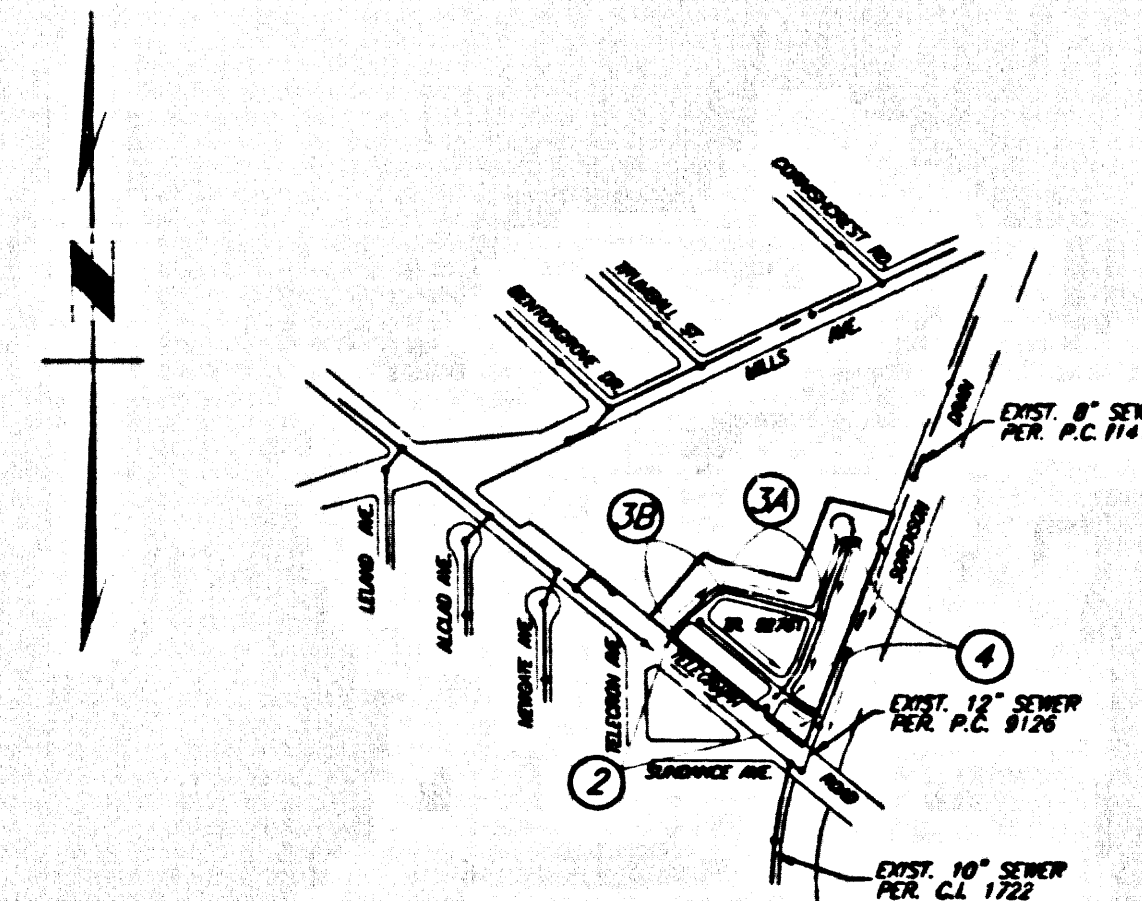


BENCHMARK #Y 9200 EL. 135.971(F.T.)
 PC MON 1.5M N/O H OF TELEGRAPH RD 13.7M N/O C/A
 IN W ABUT OF BRIDGE OVER FLOOD CONTROL CHANNEL
 16.7M N/O VICTORIA AVE MKD (FM 103-33015 1966)
 SANTA FE QUAD 1995



INDEX MAP
 SCALE: 1" = 600'
 TRACT NO. 52761 P.C.11529
 THOMAS GUIDE PAGE: 707 D-5
 NOTE: 1. NUMBERS IN CIRCLES INDICATE PAGE NUMBERS

STORMWATER POLLUTION CONTROL REQUIREMENTS FOR SEWER CONSTRUCTION

- Eroded sediments and other pollutants must be retained on site and may not be transported from the site via sheet flow, swales, area drains, natural drainage courses, or wind.
- Stockpiles of earth and other construction related materials must be protected from being transported from the site by the forces of wind or water.
- Fuels, oils, solvents, and other toxic materials must be stored in accordance with their listing and are not to contaminate the soil and surface waters. All approved storage containers are to be protected from the weather. Spills must be cleaned up immediately and disposed of in a proper manner. Spills may not be washed into the drainage system.
- Excess or waste concrete may not be washed into the public way or any other drainage system. Provisions shall be made to retain concrete washes on site until they can be disposed of as solid waste.
- From and construction-related solid wastes must be deposited into a covered receptacle to prevent contamination of rainwater and dispersal by wind.
- Sediments and other materials may not be tracked from the site by vehicle traffic. The construction entrance roadways must be stabilized so as to inhibit sediments from being deposited into the public way. Accidental depositions must be swept up immediately and may not be washed down by rain or other means.
- Any slopes with disturbed soils or denuded of vegetation must be stabilized so as to inhibit erosion by wind and water.

- | | |
|---|--|
| CA001 - DEWATERING OPERATIONS | ESC10 - SEEDING AND PLANTING |
| CA002 - PAVING OPERATIONS | ESC11 - MULCHING |
| CA003 - STRUCTURE CONSTRUCTION AND PAINTING | ESC20 - TEXTILES AND MATS |
| CA010 - MATERIAL DELIVERY AND STORAGE | ESC21 - DUST CONTROLS |
| CA015 - SOLID WASTE MANAGEMENT | ESC22 - TEMPORARY STREET CROSSING |
| CA021 - HAZARDOUS WASTE MANAGEMENT | ESC23 - CONSTRUCTION ROAD STABILIZATION |
| CA023 - CONCRETE WASTE MANAGEMENT | ESC24 - STABILIZED CONSTRUCTION ENTRANCE |
| CA024 - SANITARY/SEPTIC WASTE MANAGEMENT | ESC25 - STORM DRAIN INLET PROTECTION |
| CA030 - VEHICLE AND EQUIPMENT MAINTENANCE | |
| CA031 - VEHICLE AND EQUIPMENT FUELING | |
| CA032 - VEHICLE AND EQUIPMENT CLEANING | |
| ESC01 - SCHEDULING | |
| ESC02 - PRESERVATION OF EXISTING VEGETATION | |

STANDARD PLANS:
 THE FOLLOWING LATEST REVISED STANDARD PLANS ON FILE IN THE OFFICE OF THE FOLLOWING DEPARTMENT SHALL APPLY IN THE CONSTRUCTION OF THIS PROJECT:
 LOS ANGELES COUNTY DEPARTMENT OF PUBLIC WORKS
 APWA 208-0 BREAKING INTO EXISTING MANHOLES
 APWA 222-0 HOUSE CONNECTION SEWER
 APWA 223-0 HOUSE CONNECTION REWORKING
 APWA 200-2 NON-REINFORCED PRECAST CONCRETE MANHOLE
 APWA 225-1 BLANKET PROTECTION FOR PIPES
 2000-0 LEGEND FOR SANITARY SEWER PLANS AND PROFILES AND DISTRICT MAPS
 2021-0 BEDDING FOR SEWER PIPE
 2024-0 WYE OR TEE SUPPORT
 2027-0 ALLOWABLE TRENCH WIDTHS
 6008-0 MINIMUM PUBLIC SAFETY REQUIREMENTS
 6015-0 STANDARD MANHOLE SIZES
 2023-1 GRADING AND ENCASMENT
 2100-0 REQUIREMENTS FOR SAN. SEWER NEAR WATER MAINS

NO CONNECTION FOR DISPOSAL OF INDUSTRIAL WASTES SHALL BE MADE TO SEWERS SHOWN ON THESE DRAWINGS UNLESS A PERMIT FOR INDUSTRIAL WASTE WATER DISCHARGE HAS BEEN ISSUED BY THE SANITATION DISTRICTS FOR SAID CONNECTION.
 BEFORE BREAKING INTO OR CONSTRUCTION ON A COUNTY SANITATION DISTRICT SEWER AND PRIOR TO FINAL ACCEPTANCE OF THE PROJECT, A SANITATION DISTRICT INSPECTOR SHALL BE NOTIFIED BY PHONE AT (626)962-8605 SO THAT REQUIRED INSPECTION CAN BE MADE.

PRIVATE CONTRACT SEWER GENERAL NOTES

- The following general notes are to be included on Page 1 of all Private Contract Sewer Plans:
 1. A sewer construction permit shall be obtained and a fee paid for construction inspection and record plans to the Department of Public Works at the Permit Counter, 900 South Fremont Avenue, 8th Floor, Alhambra, at least 72 hours prior to starting work under this contract. Copies of all other required permits, such as Road Excavation, California, etc., must be filed with the permit application.
 2. Prior to issuance of any permit, the contractor shall file a permit for excavations and trenches from the State of California Division of Industrial Safety, and a Certificate of Worker's Compensation Insurance with the Department of Public Works named as the Certificate Holder to be notified 30 days prior to completion of policy.
 3. If work is to be done in a State Highway, a permit must be obtained from the State of California Division of Highways, 120 South Spring Street, Los Angeles, California.
 4. When work is within a contract city, the contractor must contact the Director of Public Works of that city, to determine the location to pay the inspection fee.
 5. The contractor shall contact the district office listed on the "Application for Construction Permit" to arrange for an acceptable construction start date, and shall notify the construction division by telephone (626) 458-2129 at least twenty-four hours before starting any work under this contract.
 6. Approval of this plan by the County of Los Angeles does not constitute a representation as to accuracy of the location of or the existence or non-existence of any underground utility pipe or structure within the limits of this project. This note applies to all pages.
 7. All work shall be in accordance with the latest approved edition of the "Standard Specifications for Public Works Construction," including supplements and the latest Special Provisions for the Construction of Sanitary Sewers and shall be preceded only in the presence of the Department of Public Works.
 8. The contractor's attention is directed to Section 7-10.4.1 of the Standard Specifications for Public Works Construction in regard to safety signs and shall conform to the "Minimum Public Safety Requirements" as shown on Los Angeles Department of Public Works' Standard S-2.
 9. Elevation are in feet above U.S.C. & G.S. sea level datum of 1929.
 10. No revisions shall be made in these plans without the approval of the Director of Public Works.
 11. No representative of the Department of Public Works will survey or lay out any portion of the work.
 12. Grades to which this improvement is to be constructed are shown on plans and profiles. Grade points for top of curbs, centerline of streets or centerline of alleys, are shown by circles on profiles at all points between designated points. The grade shall be established so as to conform to a straight line drawn between said designated points.
 13. The private engineer shall furnish the Department of Public Works with job sheets and stationing for all house laterals and "Y" or "T" branches and shall provide stakes for them at their proper locations with stationing plainly marked. All house laterals shall be constructed in a straight alignment at right angles from the main line sewer except as shown on the plans. House laterals from chimneys shall not have an angle of less than 45 degrees with the M.L. sewer. Any change in alignment shall be requested in writing by the private engineer.
 14. The private engineer shall furnish the house lateral depth at the property line below the top of curb elevation for each house lateral on the grade sheet.
 15. The private engineer shall revise this plan to show the on-built location of house laterals before the sewer is accepted for public use and the sewer security can be restored.

CONSTRUCTION NOTES

- Provide survey stakes on the property line or property lines produced at right angles to the sewer line at the centerline of each manhole.
- Vitrified clay pipe joints shall be type "D" or "C" per standard specifications section 208-2.
- If it is necessary to install three feet of the sewer, the sewer shall be encased per standard plan S-2023-1, case 8, two feet on each side from the point of interference.
- All joints between cast iron pipe and vitrified clay pipe shall be made with a rubber sleeve joint, type "D" (with fluting if necessary) per standard specifications section 208-2.
- House laterals to be constructed with inverts at the property line 8 feet below curb grade except as noted.
- Wye or tee branches may be used for connections to the mainline sewers except as noted.
- If during the course of construction, it is determined that there is less than four feet of cover over the top of a manhole or house lateral V.C.P. sewer which is not indicated on the plans, the pipes shall be encased per standard plan S-23, case 8, unless otherwise approved by the Director of Public Works.
- All structures shall be either brick sewer manholes per standard plan S-3 or precast concrete sewer manholes per standard plan S-36, or reinforced precast concrete manholes per standard plan S-8, except as noted.
- Full compliance with section 108-1.3.4 of the standard specification will be required for backfill in street certification of a certificate of partial acceptance.
- All backfill and fill outside of the street right of way shall be compacted to 90% of the maximum density as determined by ASTM soil compaction test D 1557-78 method "D" unless otherwise specified. This shall be certified by a qualified civil engineer the work by the courts.
- Manhole tops in improved rights of way to be level with finished grade.
- Sewers to be tested for leakage per section 308-1/4 of the standard specifications and special provisions.
- All eyes and/or house laterals are to be located at least five feet apart and when possible not closer than five feet to any manhole.

PROFILE, ALIGNMENT AND GRADE OF

SANITARY SEWERS
 TO BE CONSTRUCTED IN THE COUNTY OF LOS ANGELES
 TRACT NO. 52761 INDEX :2079 PC NO. 11529
 2 SHEETS: 4 PAGES
 COUNTY OF LOS ANGELES CALIFORNIA

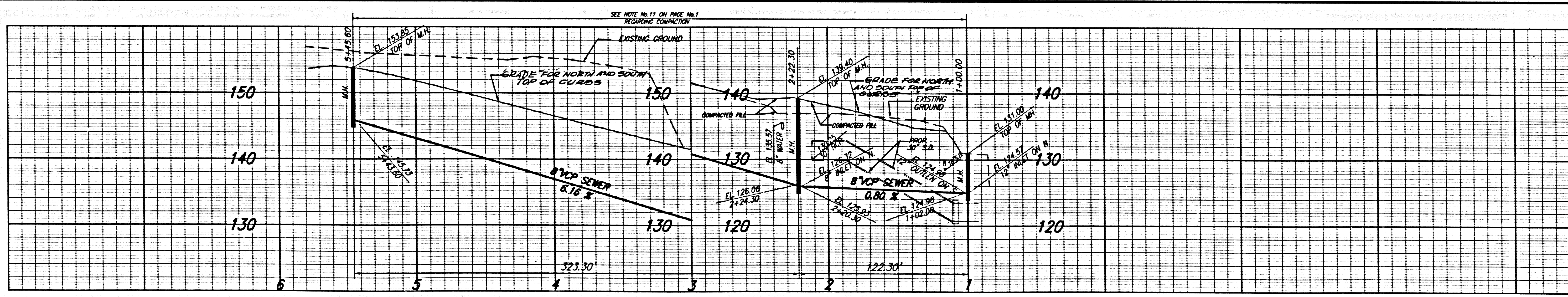
HARRY W. STONE DIRECTOR OF PUBLIC WORKS
 APPROVED BY: LAND DEVELOPMENT DIVISION
 BY: ASSISTANT DIVISION ENGINEER DATE: 5/14/2000
 SUBMITTED BY: Ramon A. Lizardo DATE: 5/14/2000
 SUPERVISOR PLAN CHECKING SECTION

APPROVED: COUNTY SANITATION DISTRICT
 OF LOS ANGELES CALIF.
 CHARLES W. CARRY - CHIEF ENGINEER AND GENERAL MANAGER
 COUNTY SANITATION DISTRICT NO. 18
 BY: DATE: 5/14/2000

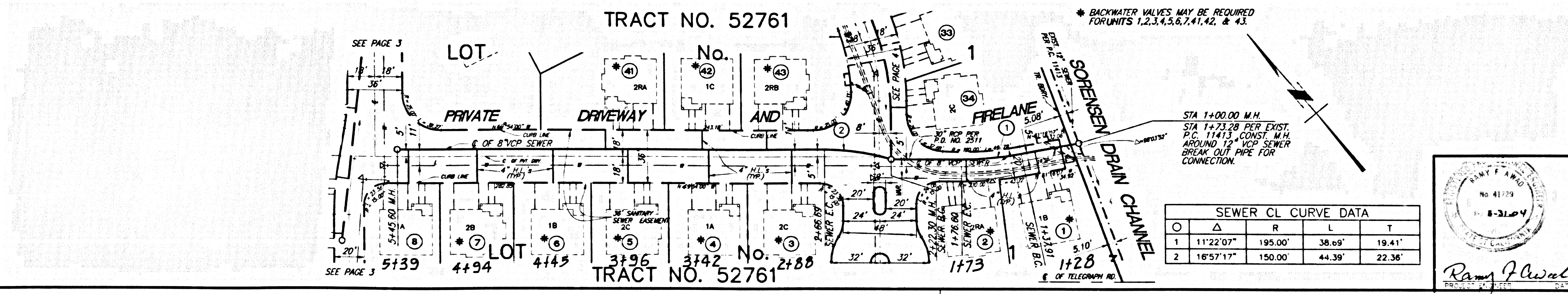
PRIVATE ENGINEERS NOTICE TO CONTRACTORS:

THE EXISTENCE AND LOCATION OF ANY UNDERGROUND UTILITY PIPES OR STRUCTURES SHOWN ON THESE PLANS IS REQUIRED BY A SEARCH OF AVAILABLE RECORDS TO THE BEST OF OUR KNOWLEDGE. THERE ARE NO EXISTING UTILITIES EXCEPT AS SHOWN ON THIS MAP. THE CONTRACTOR IS REQUIRED TO TAKE PRECAUTIONARY MEASURES TO PROTECT THE UTILITY LINES SHOWN AND ANY OTHER LINES NOT OF RECORD OR NOT SHOWN ON THIS DRAWING. PRIOR TO EXCAVATION THE CONTRACTOR SHALL CALL TOLL FREE 1-800-422-4133 TO VERIFY THE UNDERGROUND LOCATION OF GAS AND TELEPHONE LINES. THE CONTRACTOR SHALL ALSO CALL MR. RAY CUMMINGS OF GENERAL TELEPHONE COMPANY AT 1-800-948-8678 SO THAT THEY CAN MARK THE LOCATION OF UNDERGROUND TELEPHONE LINES.
 Ramon A. Lizardo DATE: 5-10-00
 RAMEY AWAD RCE NO. 41729

NO.	REVISION	REVISED BY	APPROVED BY	DATE
1	REVISED VERTICAL ALIGNMENT AND HORIZONTAL ALIGNMENT	Ramon A. Lizardo	[Signature]	5/14/00
2	REVISED VERTICAL ALIGNMENT AND HORIZONTAL ALIGNMENT	Ramon A. Lizardo	[Signature]	5/14/00
3	UPDATE THE LOCATION OF THE RELATIVE WATER MAIN LOCATION	Ramon A. Lizardo	[Signature]	6/20/00

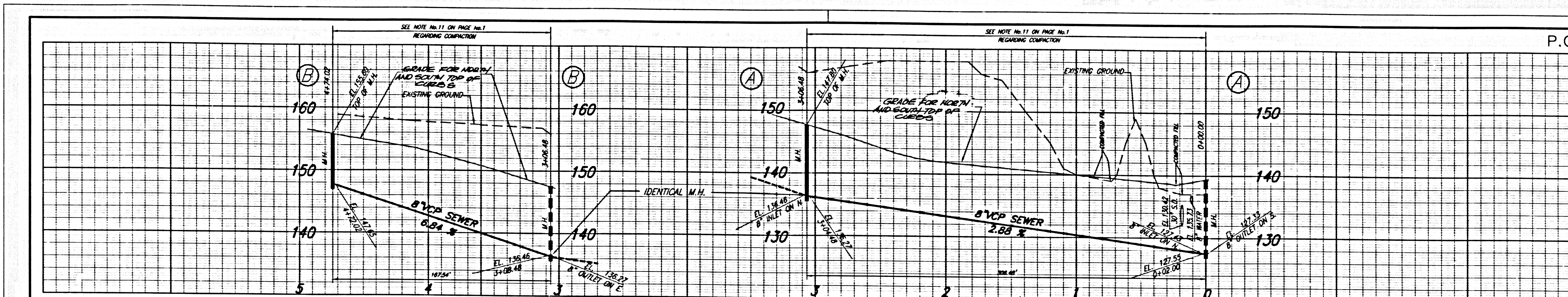


P.C.11529 PAGE 2
 NO L.A. COUNTY CHARGES FOR CONNECTIONS
 SEE CO. SANITATION DISTRICT FOR SPECIAL CONNECTION CHARGES
 TEL. (626) 899-7411 EX. 2727
 DOUBLE SCALE
 54904



PLAN
 SCALE: 1" = 40'
 25 0 50 100
 SANITARY SEWER PLANS IN TRACT NO. 52761 PC NO. 11529
 REVIEWED: LAND DEVELOPMENT DIVISION
 BY: [Signature] DATE: 4/16/00
 COUNTY OF LOS ANGELES DEPARTMENT OF PUBLIC WORKS
 B & E ENGINEERS
 CIVIL ENGINEERING SURVEYING LAND PLANNING
 24 W. ST. JOSEPH STREET
 ANAHEIM, CA 91707-2074
 626-446-4449
 626-446-6360(FAX)
 Ramon A. Lizardo DATE: 4/16/00

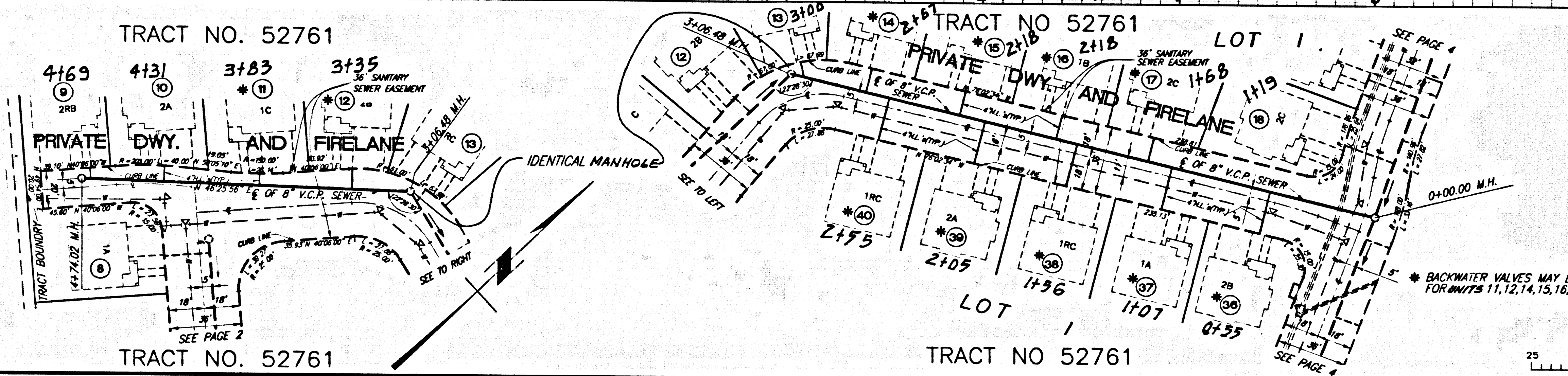
STATION	CL	R	L	T
1	11722.07"	195.00'	38.69'	19.41'
2	1657.17"	150.00'	44.39'	22.36'



P.C. 11529 PAGE 3

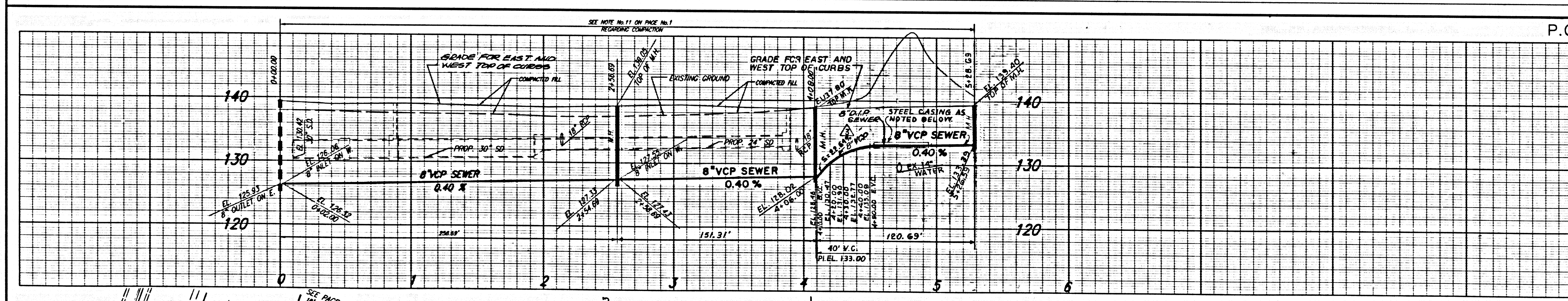
NO L.A. COUNTY CHARGES FOR CONNECTIONS
SEE CO. SANITATION DISTRICT FOR SPECIAL CONNECTION CHARGES
TEL (562) 699-7411 EX. 2727
DOUBLE SCALE

54906



PLAN SCALE: 1" = 40'

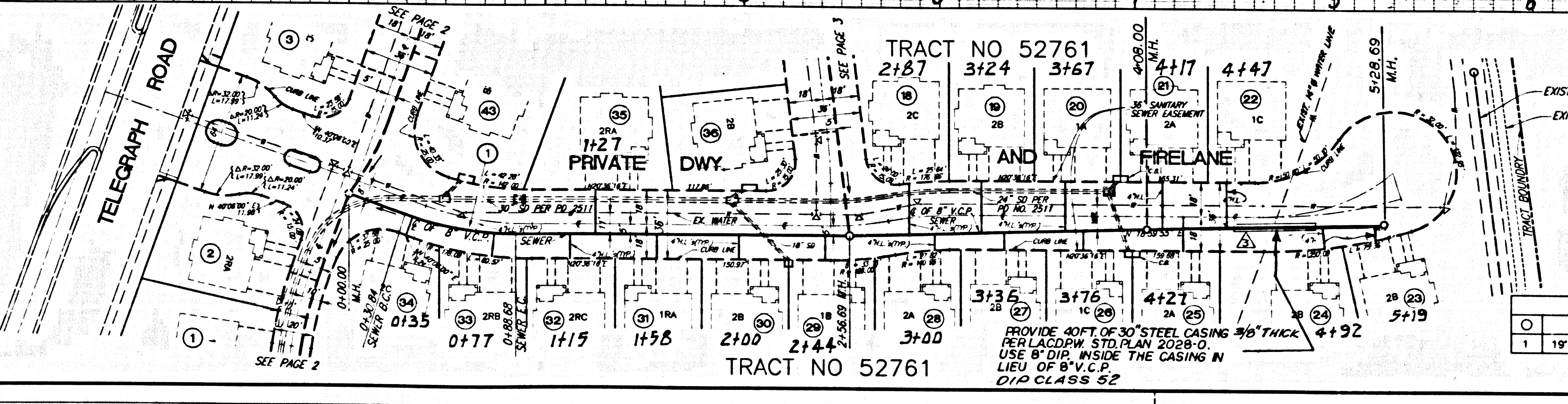
REVIEWED BY: LAND DEVELOPMENT DIVISION JTB
BY: *Sally G. Balis* 4/26/00
SUBMISSION PLAN CHECKING SECTION DATE



P.C. 11529 PAGE 4

NO L.A. COUNTY CHARGES FOR CONNECTIONS
SEE CO. SANITATION DISTRICT FOR SPECIAL CONNECTION CHARGES
TEL (562) 699-7411 EX. 2727
DOUBLE SCALE

54907



SEWER CL. CURVE DATA

O	A	R	L	T
1	19'29.44"	170.00'	57.84'	29.20'

PLAN SCALE: 1" = 40'

REVIEWED BY: LAND DEVELOPMENT DIVISION JTB
BY: *Sally G. Balis* 4/26/00
SUBMISSION PLAN CHECKING SECTION DATE

20

C

B

A

SCALE

A

16X

B

C

20X

159141_001_251831_PC.W0_11258