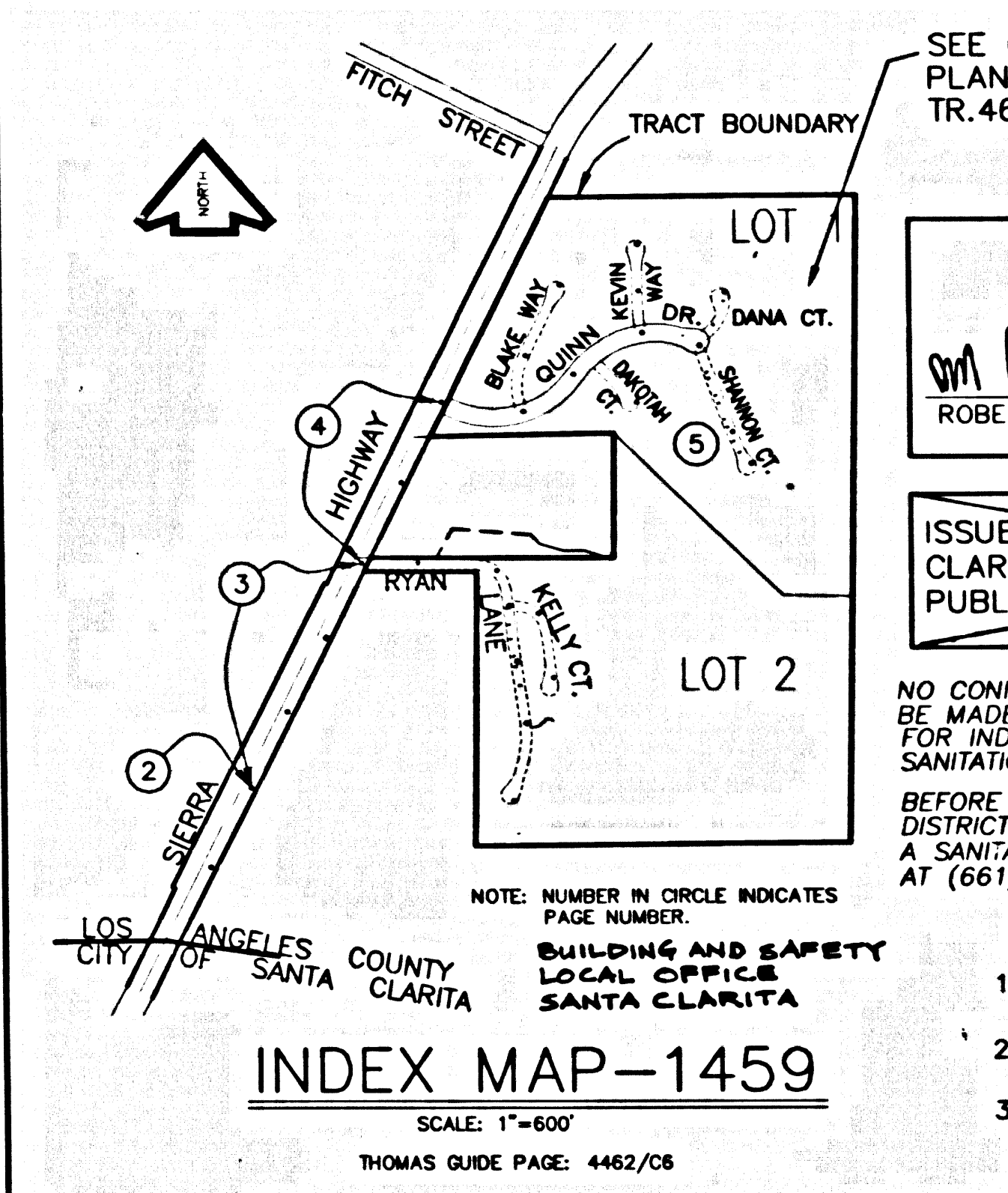


BENCH MARKS L 5226
 DPW BM TAG IN W CB SIERRA HWY 12.8M W/O C/L
 & 13.4M N/O CONG DRWY TO STORAGE BLDG
 #17175 1.8M N/O PP #1443621E
 NEWHALL QUAD 1995 ELEVATION: 1593.921



SEE ON-SITE IMPROVEMENT PLAN (P.C. 11534) FOR TR. 46353

CITY OF SANTA CLARITA DISCHARGE APPROVAL ONLY

ROBERT G. NEWMAN DIRECTOR OF TRANSPORTATION AND ENGINEERING SERVICES

2/25/04

ISSUE NO H.L. PERMITS UNTIL CITY OF SANTA CLARITA OUTLET P.C. 02-12 IS ACCEPTED FOR PUBLIC USE BY THE CITY OF SANTA CLARITA.

NO CONNECTION FOR THE DISPOSAL OF INDUSTRIAL WASTES SHALL BE MADE TO SEWERS SHOWN ON THESE DRAWINGS UNTIL A PERMIT FOR INDUSTRIAL WASTEWATER DISCHARGE HAS BEEN ISSUED BY THE SANITATION DISTRICTS FOR THE SAID CONNECTION

BEFORE BREAKING INTO OR CONSTRUCTION ON A COUNTY SANITATION DISTRICT SEWER AND PRIOR TO FINAL ACCEPTANCE OF THE PROJECT A SANITATION DISTRICT INSPECTOR SHALL BE NOTIFIED BY PHONE AT (661) 266-4883 SO THAT REQUIRED INSPECTIONS CAN BE MADE.

ADDITIONAL CONSTRUCTION NOTES:

- Contractor to coat outside of all sanitary sewer manholes with waterproof membranes on Sierra Hwy.
- All sanitary sewer manhole on Sierra Hwy frames and covers shall be watertight.
- All joints are to be mechanical compression joints on Sierra Hwy & 100' on Quinn Dwy. & Ryan Lane from the M.H. on Sierra Hwy.

STORM WATER POLLUTION CONTROL REQUIREMENTS FOR SEWER CONSTRUCTION

- Eroded sediments and other pollutants must be retained on site and may not be transported from the site via sheet flow, erosion, area drains, natural drainage courses, or wind.
- Slopesides of earth and other construction related materials must be protected from being transported from the site by the forces of wind or water.
- Fuels, oils, solvents, and other toxic materials must be retained in accordance with their listing and are not to contaminate the soil and surface waters. All approved storage containers are to be protected from the weather. Spills must be cleaned up immediately and disposed of in a proper manner. Spills may not be washed into the drainage system.
- Excavation materials may not be washed into the public way or any other drainage system. Provisions shall be made to retain concrete wastes on site until they can be disposed of as solid waste.
- Trash and construction-related solid wastes must be deposited into a covered receptacle to prevent contamination of rainwater and disposal by wind.
- Sediments and other materials may not be tracked from the site by vehicle traffic. The construction entrance roadways must be stabilized so as to inhibit sediments from being deposited into the public way. Accidental depositions must be swept up immediately and may not be washed down by rain or other means.
- Any slopes with disturbed soils or denuded of vegetation must be stabilized so as to inhibit erosion by wind and water.

LEGEND

CA001 - Dewatering Operations	ES010 - Seeding and Planting
CA002 - Paving Operations	ES011 - Mulching
CA003 - Structure Construction and Painting	ES020 - Geotextiles and Mats
CA010 - Material Delivery and Storage	ES021 - Dust Controls
CA020 - Solid Waste Management	ES022 - Temporary Stream Crossing
CA021 - Hazardous Waste Management	ES023 - Construction Road Stabilization
CA022 - Concrete Waste Management	ES024 - Stabilized Construction Entrance
CA024 - Sanitary/Sepic Waste Management	ES025 - Storm Drain Inlet Protection
CA030 - Vehicle and Equipment Cleaning	
CA031 - Vehicle and Equipment Fueling	
CA032 - Vehicle and Equipment Maintenance	
ES001 - Preservation of Existing Vegetation	

STANDARD PLANS:
 THE FOLLOWING LATEST REVISED STANDARD PLANS ON FILE IN THE OFFICE OF THE FOLLOWING DEPARTMENT SHALL APPLY IN THE CONSTRUCTION OF THIS PROJECT.

LOS ANGELES COUNTY DEPARTMENT OF PUBLIC WORKS

MINIMUM PUBLIC SAFETY REQUIREMENTS	2008-0
BRICK MANHOLE	2003-0
STANDARD MANHOLE STEP	2015-0
BEDDING FOR SEWER PIPE	2021-0
CHALKING AND ENGAGEMENT	2023-0
WYE OR Tee SUPPORT	2024-0
ALLOWABLE TRENCH WIDTHS	2027-0
NON PRECAST CONCRETE MANHOLE	2001-0
BREAK INTO EXISTING MANHOLE	2010-0
SPECIAL HOUSE LATERALS	2022-0
EROSION PROTECTION IN STEP SLOPES	2009-0
ANCHOR BLOCKS	2021-0
LATCHING STEEL CASING FOR SEWER PIPE	2028-0
CHIMNEYS	2021-0

* REFERS TO A.P.W. STD. DRAWING NO.

GENERAL NOTES:

- A sewer construction permit shall be obtained and a fee paid for construction inspection and record plans to the Department of Public Works of the Permit Counter, 900 South Fremont Avenue, 8th Floor, Alhambra, at least 72 hours prior to starting work under this permit. Copies of all other required permits, such as Road Excavation, Caltrans, etc., must be filed with the permit application.
- Prior to issuance of any permit, the contractor shall file a permit for excavations and trenches from the State of California Division of Industrial Safety, and a Certificate of Worker's Compensation Insurance with the Department of Public Works named on the Certificate Holder to be notified 30 days prior to commencement of work.
- If work is done in a State Highway, a permit must be obtained from the State of California Division of Highways, 120 South Spring Street, Los Angeles, California.
- When work is within a contract city, the contractor must contact the Director of Public Works of that city, to determine the location to pay the inspection fee.
- The contractor shall contact the district office listed on the "Application for Construction Permit" to arrange for an acceptable construction start date.
- Approval of this plan by the County of Los Angeles does not constitute a representation as to accuracy of the location of, or the existence or non-existence of any underground utility pipe or structure within the limits of this project. The note applies to all pages.
- All work shall be in accordance with the latest approved edition of the "Standard Specifications for Public Works Construction, including supplements and the latest Special Provisions for the Construction of Sanitary Sewers" and shall conform to the "Minimum Public Safety Requirements" as shown on Los Angeles Department of Public Works' Standard S-2.
- The contractor's attention is directed to Section 7-10.4.1 of the Standard Specifications for Public Works Construction in regard to safety orders and shall conform to the "Minimum Public Safety Requirements" as shown on Los Angeles Department of Public Works' Standard S-2.
- Elevations are in feet above U.S.C. & G.S. sea level datum of 1928.
- No revisions shall be made in these plans without the approval of the Director of Public Works.
- No representative of the Department of Public Works will survey or lay out any portion of the work.
- Grades to which this improvement is to be constructed are shown on plans and profiles. Grade points for lots of curbs, centerlines of streets, or centerlines of ditches, are shown by crosses on profiles at all points between designated points. The grade shall be established so as to conform to a straight line drawn between said designated points.
- The private engineer shall furnish the Department of Public Works with grade sheets and stationing for all house laterals and "Y" or "T" branches and shall provide stakes for them at their proper locations with stationing plainly marked. All house laterals shall be constructed in a straight alignment at right angles from the main line sewer except as shown on the plans. House laterals from chimneys shall not have an angle of less than 45 degrees with the M.L. sewer. Any change in alignment shall be requested in writing by the private engineer.
- The private engineer shall furnish the house lateral depth at the property line below the top of curb elevation for each house lateral on the grade sheet.
- The engineer shall revise this plan to show the on-built location of house laterals before the sewer is accepted for public use and the sewer security cover is released.

CONSTRUCTION NOTES:

- Provide survey stakes on the property line or property lines produced at right angles to the sewer line at the centerline of each manhole.
- Marked pipe joints shall be type "D" or "Q" per standard specifications section 208-2.
- If a power pole is within three feet of the sewer, the sewer shall be encased per standard plan S-23, case II, two feet on each side from the point of interference.
- All joints between cast iron pipe and vitrified clay shall be made with a rubber sleeve joint, type "D" (with bushing if necessary) per standard specifications section 208-2.
- House laterals to be constructed with inverts at the property line 6 feet below curb grade except as noted.
- If pipe or line branches may be used for connections to the mainline sewers except as noted.
- If during the course of construction, it is determined that there is less than four feet of cover over the top of a manhole or house lateral V.C.P. sewer which is not indicated on the plans, the pipes shall be encased per standard plan S-23, case II, unless otherwise approved by the Director of Public Works.
- All structures shall be either brick sewer manholes per standard plan S-3 or precast concrete sewer manholes per standard plan S-36, or reinforced precast concrete manhole per standard plan S-5, except as noted.
- Reinforce all trenches within paved areas to meet Los Angeles County Public Works or California State Highway requirements in accordance with the permits.
- Full compliance with section 306-13.4 of the standard specification will be required for backfill in street certification of backfill composition and soil equivalents by a qualified civil engineer shall be provided by the permittee prior to the issuance of a certificate of partial acceptance.
- All backfill and fills outside of the street right of way shall be compacted to 90% of the maximum density as determined by ASTM soil compaction test D 1557-78 unless otherwise specified. This shall be certified by a qualified civil engineer. This certification shall be submitted to the Construction Division of the Department of Public Works prior to the acceptance of the work by the county.
- Manhole tops in unimproved rights of way to be six inches above finished grade.
- Sewers to be tested for leakage per section 306-1/4 of the standard specifications and special provisions.

PAGE 1
 PROFILE, ALIGNMENT AND GRADE OF
SANITARY SEWERS
 OFF-SITE IMPROVEMENT FOR
 TRACT NO. 46353 PC NO. 11534
 INDEX - 1459
 2 SHEETS: 4 PAGES
 COUNTY OF LOS ANGELES, CALIFORNIA

JAMES A. NOYES DIRECTOR OF PUBLIC WORKS

APPROVED BY LAND DEVELOPMENT DIVISION
 BY *Dennis Hunter* 12/30/03
 ASSISTANT DIVISION ENGINEER DATE

SUBMITTED BY *W.P.K.* 12/30/03
 SUBDIVISION PLAN CHECKING SECTION DATE

APPROVED: COUNTY SANITATION DISTRICT OF LOS ANGELES COUNTY
 JAMES F. STAHL - CHIEF ENGINEER AND GENERAL MANAGER
 COUNTY SANITATION DISTRICT NO. 28
 56299

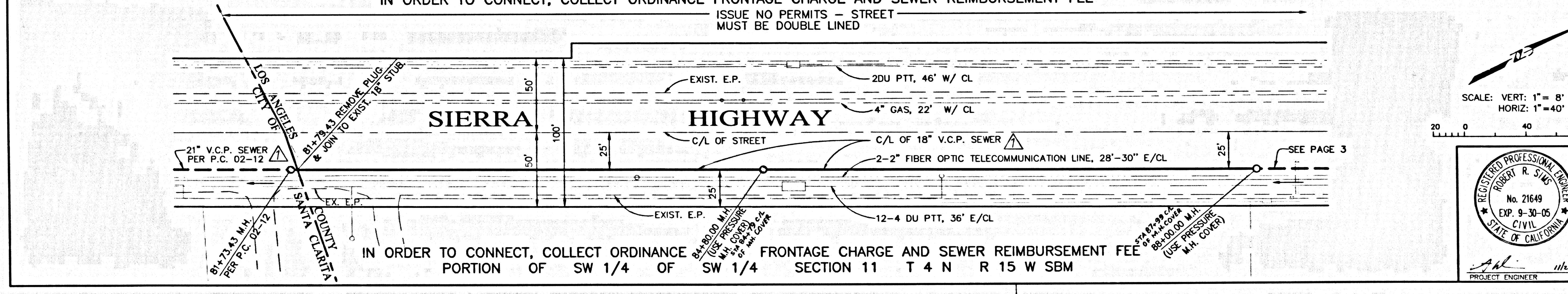
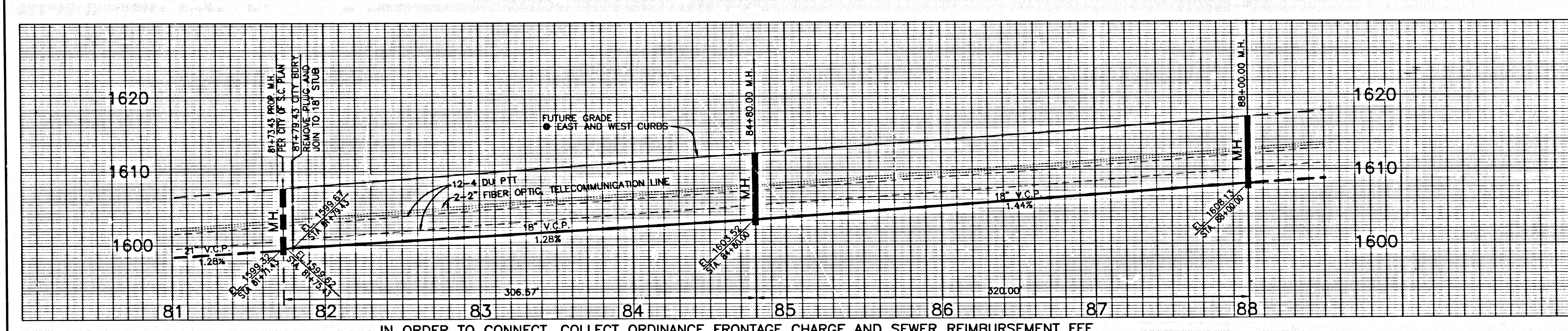
BY *William S.* 2/2/04
 OFFICE ENGINEER DATE

PRIVATE ENGINEERS NOTICE TO CONTRACTORS:

THE EXISTENCE AND LOCATION OF ANY UNDERGROUND UTILITY PIPES OR STRUCTURES SHOWN ON THESE PLANS IS REQUIRED BY A SEARCH OF AVAILABLE RECORDS TO THE BEST OF OUR KNOWLEDGE. THERE ARE NO EXISTING UTILITIES EXCEPT AS SHOWN ON THIS MAP. THE CONTRACTOR IS REQUIRED TO TAKE PRECAUTIONARY MEASURES TO PROTECT THE UTILITY LINES SHOWN AND ANY OTHER LINES NOT OF RECORD OR NOT SHOWN ON THIS DRAWING. PRIOR TO EXCAVATION THE CONTRACTOR SHALL CALL TOLL FREE 1-800-422-4133 TO VERIFY THE UNDERGROUND LOCATION OF GAS AND TELEPHONE LINES. THE CONTRACTOR SHALL ALSO CALL RAY CLUMMINS OF GENERAL TELEPHONE COMPANY AT 1-805-948-4871 SO THAT THEY CAN MARK THE LOCATION OF UNDERGROUND TELEPHONE LINES.

1/5/04
 R.C.E. NO. 21649 DATE

NO.	REVISION	REVISED BY	APPROVED BY	DATE



P.C. 11534 PAGE 2

DOUBLE SCALE
 NO L.A. CO. CHARGES FOR CONNECTIONS
 SEE COUNTY SAN. DISTRICT FOR SPECIAL CONNECTION CHARGES (562) 699-7411 X-2727

56300

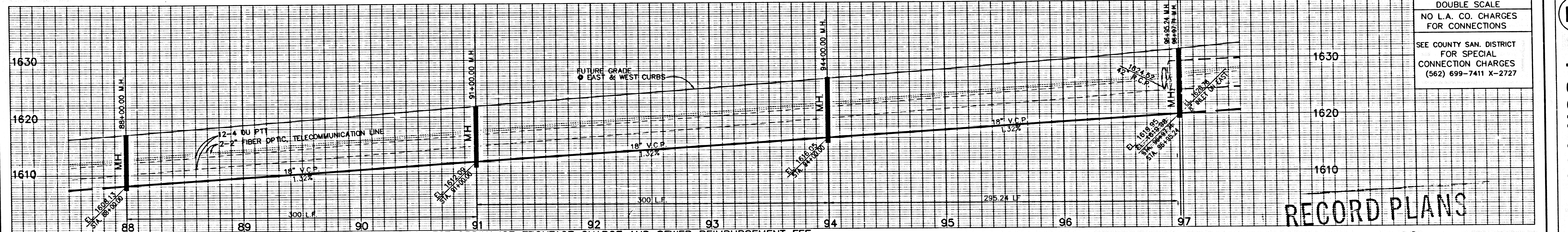
SANITARY SEWER PLANS IN
 TRACT NO. 46353 P.C. NO. 11534
 REVIEWED BY LAND DEVELOPMENT DIVISION
 BY *W.P.K.* 12/30/03
 SUBDIVISION PLAN CHECKING SECTION DATE

COUNTY OF LOS ANGELES DEPARTMENT OF PUBLIC WORKS

LDC LAND DESIGN CONSULTANTS, INC.
 Land Planning, Civil Engineering, Surveying & Environmental Services
 225 South Lake Avenue, Suite 600
 Pasadena, Ca 91101
 (626) 578-7000

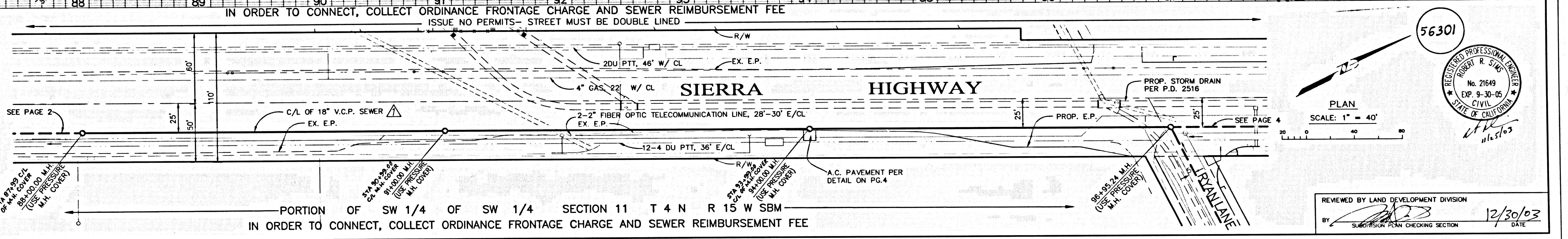
99023-007 PROJECT NO.

OFF-SITE IMPROVEMENT FOR TRACT NO. 46353 P.C. 11534



DOUBLE SCALE
NO L.A. CO. CHARGES
FOR CONNECTIONS
SEE COUNTY SAN. DISTRICT
FOR SPECIAL
CONNECTION CHARGES
(562) 699-7411 X-2727

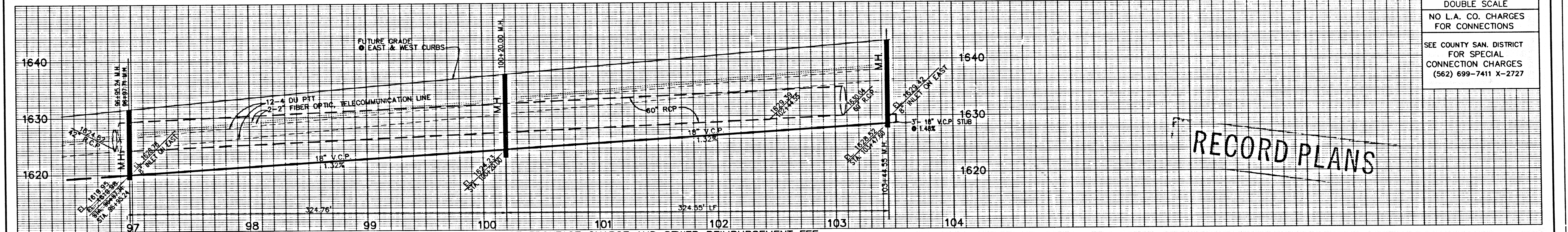
RECORD PLANS



56301
REGISTERED PROFESSIONAL ENGINEER
ROBERT R. STUBBS
No. 21649
EXP. 9-30-05
CIVIL
STATE OF CALIFORNIA
1/16/03

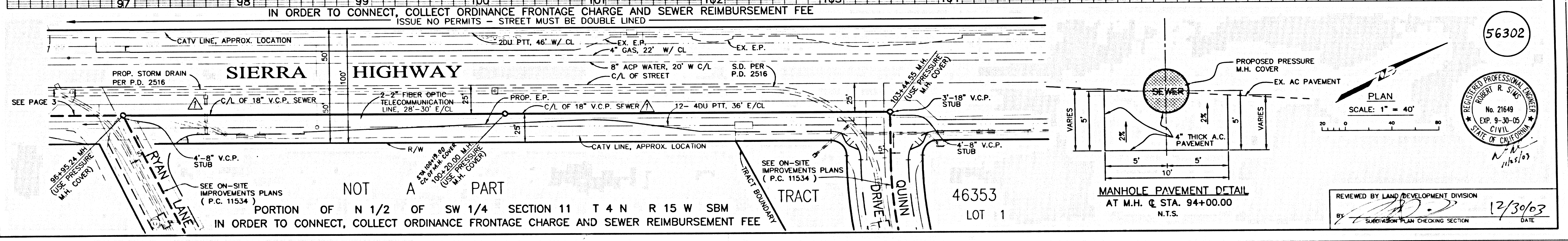
PLAN
SCALE: 1" = 40'

REVIEWED BY LAND DEVELOPMENT DIVISION
BY: [Signature] 12/30/03
SUBMISSION PLAN CHECKING SECTION DATE



DOUBLE SCALE
NO L.A. CO. CHARGES
FOR CONNECTIONS
SEE COUNTY SAN. DISTRICT
FOR SPECIAL
CONNECTION CHARGES
(562) 699-7411 X-2727

RECORD PLANS



56302
REGISTERED PROFESSIONAL ENGINEER
ROBERT R. STUBBS
No. 21649
EXP. 9-30-05
CIVIL
STATE OF CALIFORNIA
1/16/03

PLAN
SCALE: 1" = 40'

REVIEWED BY LAND DEVELOPMENT DIVISION
BY: [Signature] 12/30/03
SUBMISSION PLAN CHECKING SECTION DATE

S PART OF 33334 ON H I

11/29/03 12:27:31 5630