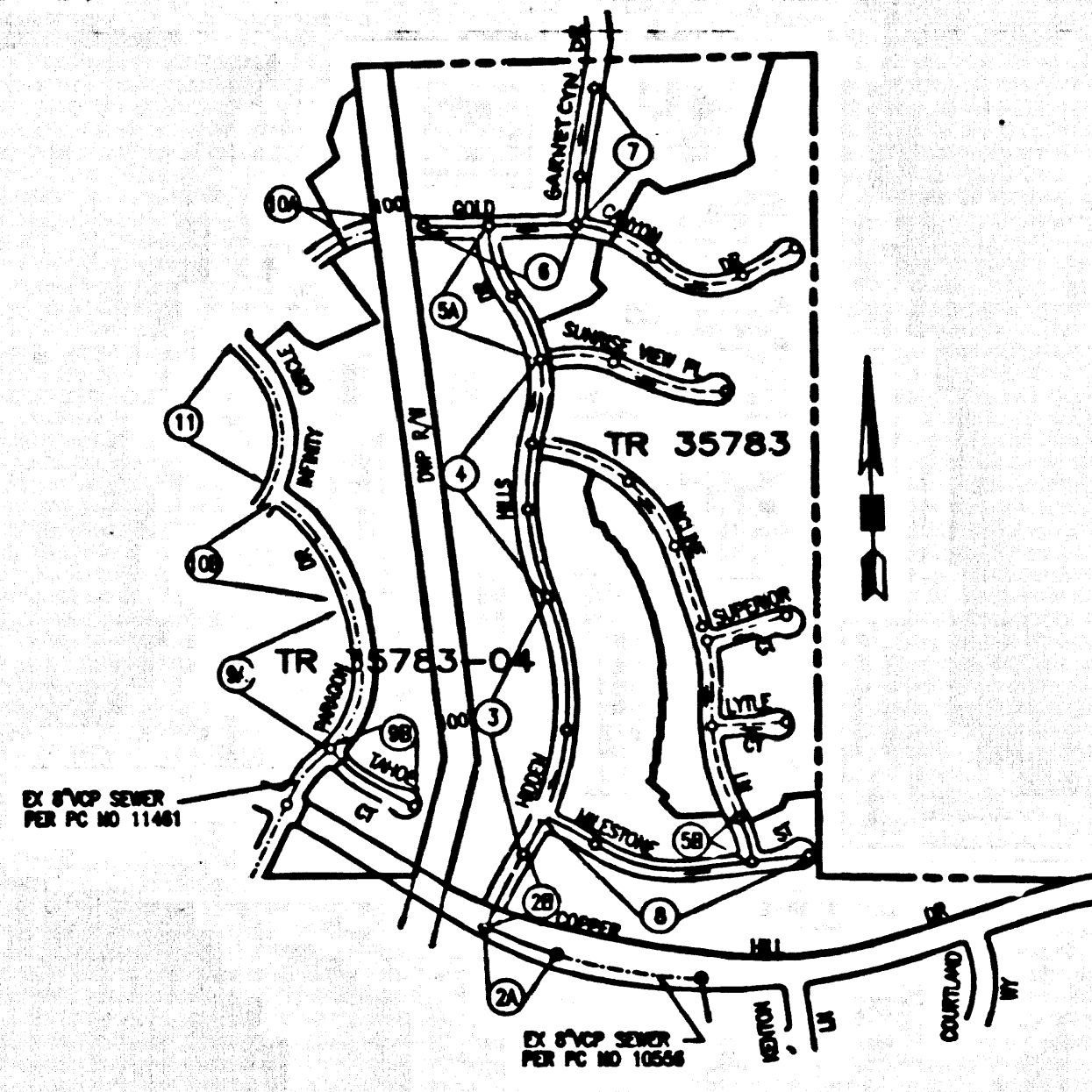


B.M. L 5291 ELEV. 1342.771
 DPW BM TAG IN S CB 5 FT E/O BOR @ SE
 COR SECO CWN RD & COPPER HILL DR 64 FT
 E & 32 FT S/O C/L INT (W END C.B.)
 NEWHALL QUAD.19 (1993)

SEE REVISION NOTE PG 12



INDEX MAP
 SCALE: 1" = 800'
 P.C. 11542 TRACT NO. 35783-04
 THOMAS GUIDE PG. NO. 4461 A4
 NOTE: NUMBERS IN CIRCLES INDICATE PAGE NUMBERS

BEFORE BREAKING INTO OR CONSTRUCTION ON A COUNTY SANITATION DISTRICT SEWER AND PRIOR TO FINAL ACCEPTANCE OF THE PROJECT, A SANITATION DISTRICT INSPECTOR SHALL BE NOTIFIED BY PHONE (621)256-4653 SO THAT REQUIRED INSPECTION CAN BE MADE.

STORMWATER POLLUTION CONTROL REQUIREMENTS FOR SEWER CONSTRUCTION

DOUBLE SCALE

1. Erosion control and other measures must be installed on site and may not be removed from the site until erosion, siltation, and debris are controlled.
2. Storage of earth and other construction related materials must be protected from being transported from the site by the forces of wind or water.
3. Piles, logs, and other debris materials must be stored in accordance with their being used and not be scattered on the land and surface waters. All approved storage containers are to be protected from the weather. Spills may not be washed into the drainage system.
4. Storm or water materials may not be washed into the public way or any other drainage system. Provisions shall be made to route concrete washes on site until they can be disposed of at an approved site.
5. Wash and construction related water must be contained in a covered receptacle to prevent contamination of material and dispersed by wind.
6. Sediment and other materials may not be tracked from the site by vehicle traffic. The construction entrance roadway must be established as an 18" curb sidewalk from being deposited into the public way. Additional curbs must be swept up immediately and may not be washed down by rain or other means.
7. Any areas with disturbed soil or removal of vegetation must be stabilized as to a habitat erosion by wind and water.

The following shall be installed in, but not limited to, the Best Management Practices Handbook, California Stormwater Quality Best Management Practices Handbook, or the Sanitation District's Best Management Practices Handbook. (See "BMP" for more information.)

- | | |
|--|---|
| CG01 - DEMONSTRATION | ESC10 - SEEDING AND PLANTING |
| CG02 - PAVING OPERATIONS | ESC11 - MULCHING |
| CG03 - STRUCTURE CONSTRUCTION AND PAINTING | ESC12 - COERCILES AND MATS |
| CG10 - MATERIAL DELIVERY AND STORAGE | ESC21 - DUST CONTROLS |
| CG20 - SOIL WASTE MANAGEMENT | ESC22 - TEMPORARY STREAM CROSSING |
| CJ01 - HAZARDOUS WASTE MANAGEMENT | ESC23 - CONSTRUCTION ROAD STABILIZATION |
| CJ02 - CONCRETE WASTE MANAGEMENT | ESC24 - DISABLED CONSTRUCTION ENTRANCE |
| CG24 - SANITARY/SEWER WASTE MANAGEMENT | ESC24 - STORM DRAIN RAIL PROTECTION |
| CG30 - VEHICLE AND EQUIPMENT CLEANING | |
| CG31 - VEHICLE AND EQUIPMENT FUELING | |
| CG32 - WASTE AND EQUIPMENT MAINTENANCE | |
| ES01 - SCHEDULING | |
| ES02 - PRESERVATION OF EXISTING VEGETATION | |

STANDARD PLANS:
 THE FOLLOWING LATEST REVISED STANDARD PLANS ON FILE IN THE OFFICE OF THE DEPARTMENT OF PUBLIC WORKS SHALL APPLY IN THE CONSTRUCTION OF THIS PROJECT.

- APW 208-1 BREAKING INTO EXISTING MANHOLE
- APW 222-1 HOUSE CONNECTION SEWER
- APW 223-1 HOUSE CONNECTION REMEDIATION
- APW 224-1 NON-REINFORCED PRECAST CONCRETE MANHOLE
- APW 225-1 BULKHEAD PROTECTION FOR PIPES
- 200-0 LEGEND FOR SANITARY SEWER PLANS AND PROFILES AND DISTRICT MAPS
- 201-0 LEGEND FOR SEWER PIPE
- 202-0 W/O OR T/S SEWER
- 203-0 ALLOWABLE TRENCH WIDTHS
- 204-0 MANHOLE PUBLIC SAFETY REQUIREMENTS
- 205-0 STANDARD MANHOLE DEEP
- 206-1 CHANGING AND ENLARGING REQUIREMENTS FOR SAN SEWERS UNDER WATER WAYS
- 207-1 SPECIAL HOUSE LATERALS

NO CONNECTION FOR THE DISPOSAL OF INDUSTRIAL WASTES SHALL BE MADE TO SEWERS SHOWN ON THESE DRAWINGS UNLESS A PERMIT FOR INDUSTRIAL WASTEWATER DISCHARGE HAS BEEN ISSUED BY THE SANITATION DISTRICTS FOR SAID CONNECTIONS.

PRIVATE CONTRACT SEWER GENERAL NOTES

1. ALL PRIVATE CONTRACT SEWER PLANS SHALL BE OBTAINED AND A FEE PAID FOR CONSTRUCTION INSPECTION AND RECORD PLANS TO THE DEPARTMENT OF PUBLIC WORKS AT THE PUBLIC COUNTY, 800 SOUTH PLYMOUTH AVENUE, 8TH FLOOR, ANGELES, CA 90017. 72 HOURS PRIOR TO STARTING WORK UNDER THIS CONTRACT. COPIES OF ALL OTHER REQUIRED PERMITS, SUCH AS ROAD ENCROACHMENT, CALTRANS ETC. MUST BE FILED WITH THE PERMIT APPLICATION.
2. THE CONTRACTOR SHALL OBTAIN A PERMIT FOR EXCAVATIONS AND TRENCHES FROM THE STATE OF CALIFORNIA DIVISION OF INDUSTRIAL SAFETY AND CERTIFICATE OF WORKERS COMPENSATION INSURANCE WITH THE DEPARTMENT OF PUBLIC WORKS PRIOR TO THE CONTRACT. ALL PERMITS SHALL BE NOTIFIED 30 DAYS PRIOR TO COMMENCEMENT OF WORK.
3. IF WORK IS TO BE DONE IN A STATE HIGHWAY, A PERMIT MUST BE OBTAINED FROM THE STATE OF CALIFORNIA DIVISION OF HIGHWAYS, 120 SOUTH SPRING STREET, LOS ANGELES, CALIFORNIA.
4. THE CONTRACTOR SHALL CONTACT THE DISTRICT OFFICE LISTED ON THE "APPLICATION FOR CONSTRUCTION PERMIT" TO OBTAIN AN APPROVED CONSTRUCTION START DATE, AND SHALL NOTIFY THE CONSTRUCTION DIVISION BY TELEPHONE (621)256-3118 AT LEAST TWENTY-FOUR HOURS BEFORE STARTING ANY WORK UNDER THIS CONTRACT.
5. APPROVAL OF THIS PLAN BY THE COUNTY OF LOS ANGELES DOES NOT CONSTITUTE A REPRESENTATION AS TO ACCURACY OF THE LOCATION OF, OR THE EXISTENCE OR NON-EXISTENCE OF ANY UNDERGROUND UTILITY PIPE OR STRUCTURE WITHIN THE LIMITS OF THE PROJECT. THE NOTE APPLIES TO ALL PAGES.
6. ALL WORK SHALL BE IN ACCORDANCE WITH THE STANDARD SPECIFICATIONS FOR PUBLIC WORKS CONSTRUCTION, INCLUDING SUPPLEMENTAL AND SPECIAL PROVISIONS FOR THE CONSTRUCTION OF SANITARY SEWERS, AND SHALL BE PROSECUTED ONLY IN THE PRESENCE OF THE DEPARTMENT OF PUBLIC WORKS PERSONNEL.
7. THE CONTRACTOR'S ATTENTION IS DIRECTED TO SECTION 7-10.4.1 OF THE STANDARD SPECIFICATIONS FOR PUBLIC WORKS CONSTRUCTION IN REGARD TO SAFETY ORDERS AND SHALL CONFORM TO THE TARRANT PUBLIC SAFETY REQUIREMENTS AS SPECIFIED ON LOS ANGELES DEPARTMENT OF PUBLIC WORKS STANDARD 8-5.
8. EXCAVATIONS ARE TO BE FIVE FEET ABOVE GRADE, OR E.O. BEL LINE, SURFACE OF ROAD.
9. ALL REVISIONS SHALL BE MADE IN THESE PLANS WITHOUT THE APPROVAL OF THE DIRECTOR OF PUBLIC WORKS.
10. NO REPRESENTATIVE OF THE DEPARTMENT OF PUBLIC WORKS WILL SURVEY OR LAY OUT ANY PORTION OF THE WORK.
11. GRADES TO WHICH THIS IMPROVEMENT IS TO BE CONSTRUCTED ARE SHOWN ON PLANS AND PROFILES. GRADE POINTS FOR TOP OF CURBS, CENTERLINE OF STREETS, OR CENTERLINE OF ALLEYS, ARE TO BE SHOWN BY CIRCLES ON PROFILES AT ALL POINTS BETWEEN DESIGNATED POINTS. THE GRADE SHALL BE ESTABLISHED SO AS TO CONFORM TO ALL INFORMATION ON PROFILES AT SAID DESIGNATED POINTS.
12. THE PRIVATE ENGINEER SHALL FURNISH THE DEPARTMENT OF PUBLIC WORKS WITH THREE SETS WITH BRIDGE SHEETS AND ENDWORK FOR ALL HOUSE LATERALS AND SPECIAL BRANCHES AND SHALL PROVIDE PLANS FOR THEIR PROPER LOCATIONS WITH STRIP-AND-PLAY LATERALS AND SPECIAL BRANCHES. ALL SPECIAL BRANCHES SHALL BE LOCATED AT RIGHT ANGLES FROM THE MAIN LINE SEWER, EXCEPT AS SHOWN ON THE PLANS. HOUSE LATERALS FROM CHIMNEYS SHALL NOT HAVE AN ANGLE OF LESS THAN 45° WITH THE BELL. BRANCHES AND CHIMNEYS SHALL BE LOCATED AS SHOWN ON THE BRIDGE SHEETS.
13. THE PRIVATE ENGINEER SHALL FURNISH THE HOUSE LATERAL, DEPTH AT THE PROPERTY LINE BELOW THE TOP CURB ELEVATION FOR EACH HOUSE LATERAL ON THE GRADE SHEET.

CONSTRUCTION NOTES

1. PROVIDE SURVEY STAKES ON THE PROPERTY LINE OR PROPERTY LINES PRODUCED AT RIGHT ANGLES TO THE SEWER LINE AT THE CENTERLINE OF EACH MANHOLE.
2. WITNESSED CLAY PIPE JOINTS SHALL BE TYPE "T" OR "U" PER STANDARD SPECIFICATIONS SECTION 308-2.
3. IF A POWER POLE IS WITHIN THREE FEET OF THE SEWER, THE SEWER SHALL BE ENCASED PER STANDARD PLAN 2003-1, CASE B, TWO FEET ON EACH SIDE FROM THE POINT OF INTERFERENCE.
4. ALL JOINTS BETWEEN CAST IRON PIPE AND WITNESSED CLAY PIPE SHALL BE MADE WITH A RUBBER SLEEVE JOINT, TYPE "T" WITH BRASS RINGS PER STANDARD SPECIFICATIONS SECTION 308-2.
5. HOUSE LATERALS TO BE CONSTRUCTED WITH BRANCHES AT RIGHT ANGLES TO THE MAIN LINE SEWER EXCEPT AS NOTED.
6. W/O OR T/S BRANCHES MAY BE USED FOR CONNECTIONS TO MARINE SEWERS EXCEPT AS NOTED.
7. IF DURING THE COURSE OF CONSTRUCTION, IT IS DETERMINED THAT THERE IS LESS THAN FOUR FEET OF COVER OVER THE TOP OF A MANHOLE OR HOUSE LATERAL, W/O SEWER WHICH IS NOT TO BE USED ON THE PLANS, THE PIPE SHALL BE ENCASED PER STANDARD PLANS 8-23 CASE A, UNLESS OTHERWISE APPROVED BY THE DIRECTOR OF PUBLIC WORKS.
8. ALL STRUCTURES SHALL BE EITHER BRICK SEWER MANHOLES PER STANDARD PLAN 8-3 OR PRECAST CONCRETE SEWER MANHOLES PER STANDARD PLAN 8-26 OR REINFORCED PRECAST CONCRETE MANHOLE PER STANDARD PLAN 8-3, EXCEPT AS NOTED.
9. REINFORCE ALL TRENCHES WITHIN PAVED AREAS TO MEET LOS ANGELES COUNTY PUBLIC WORKS OR CALIFORNIA STATE HIGHWAY REQUIREMENTS IN ACCORDANCE WITH THE PERMITS.
10. FULL COMPLIANCE WITH SECTION 308-1.3.4 OF THE STANDARD SPECIFICATIONS WILL BE REQUIRED FOR BACKFILL IN STREETS, CERTIFICATION OF BACKFILL CONTRACTOR AND SAND EQUIVALENTS BY A QUALIFIED CIVIL ENGINEER SHALL BE PROVIDED BY THE PERMITTEE PRIOR TO THE BEGAINING OF A CERTIFICATE OF PARTIAL ACCEPTANCE.
11. ALL BACKFILL AND FILL OUTSIDE OF STREET RIGHT OF WAY SHALL BE COMPACTED TO SOLE OF MAXIMUM DENSITY AS DETERMINED BY ASTM STANDARD METHOD D 1557-73 METHOD "D" UNLESS OTHERWISE SPECIFIED. THIS SHALL BE CERTIFIED BY A QUALIFIED CIVIL ENGINEER. THE CERTIFICATION SHALL BE SUBMITTED TO THE CONSTRUCTION DIVISION OF THE DEPARTMENT OF PUBLIC WORKS PRIOR TO ACCEPTANCE OF THE WORK BY THE COUNTY.
12. MANHOLE TOPS IN IMPROVED RIGHTS OF WAY TO BE LEVEL WITH FINISHED GRADE.
13. SEWERS TO BE TESTED FOR LEAKAGE PER SECTION 308-1.4 OF THE STANDARD SPECIFICATION AND SPECIAL PROVISIONS.
14. ALL W/O AND/OR HOUSE LATERALS ARE TO BE COATED AT LEAST FIVE FEET APART AND WHEN POSSIBLE NOT CLOSER THAN FIVE FEET TO ANY MANHOLE.

PROFILE, ALIGNMENT AND GRADE OF SANITARY SEWERS

TR. NO. 35783-04 PC NO. 11542
 6 SHEETS: 11 PAGES
 COUNTY OF LOS ANGELES CALIFORNIA
 INDEX NO. _____

JAMES A. NOYES DIRECTOR OF PUBLIC WORKS
 APPROVED BY LAND DEVELOPMENT DIVISION
 BY *Phil Dauder* 4/14/01
 SUBMITTED BY *JM* 6/11/01

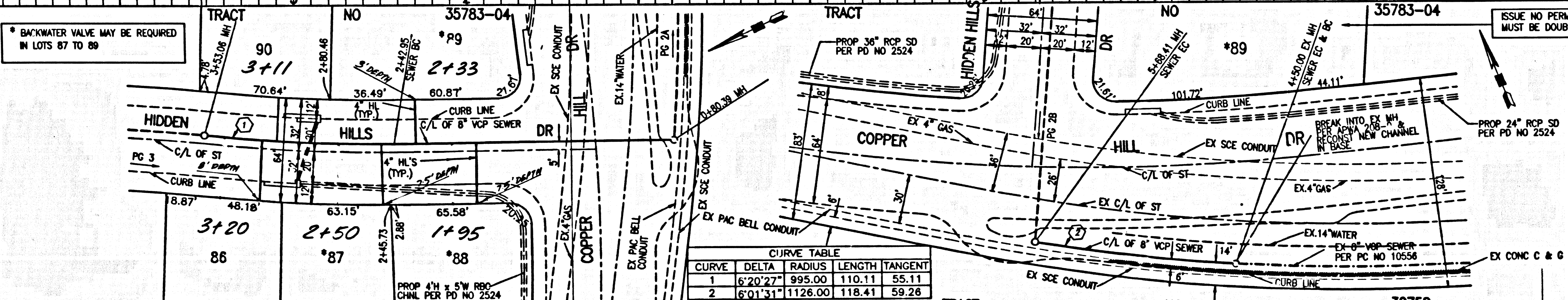
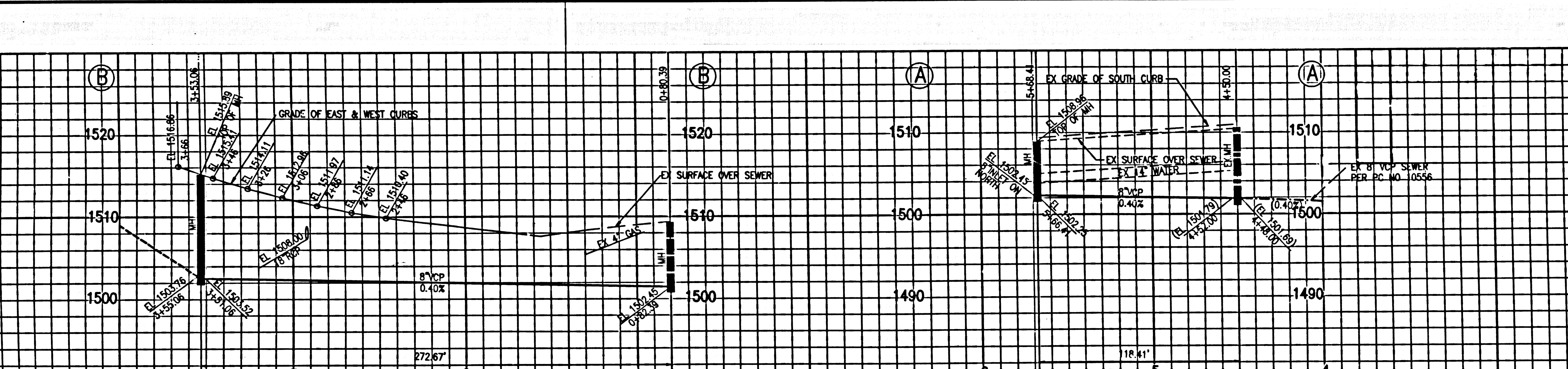
APPROVED: COUNTY SANITATION DISTRICT OF LOS ANGELES CALIF.
 JAMES F. STAHL - CHIEF ENGINEER AND GENERAL MANAGER
 COUNTY SANITATION DISTRICT NO. 26

BY *James F. Stahl* DATE 6-15-2001

PRIVATE ENGINEERS NOTICE TO CONTRACTORS:

THE DISTANCE AND LOCATION OF ANY UNDERGROUND UTILITY PIPES OR STRUCTURES SHOWN ON THESE PLANS IS BELIEVED BY A SEARCH OF AVAILABLE RECORDS TO THE BEST OF OUR KNOWLEDGE. THERE ARE NO EXISTING UTILITIES EXCEPT AS SHOWN ON THE PLANS. THE CONTRACTOR IS REQUIRED TO TAKE PRECAUTIONARY MEASURES TO PROTECT THE UTILITY LINES SHOWN AND ANY OTHER LINES NOT OF RECORD OR NOT SHOWN ON THE PLANS. PRIOR TO EXCAVATION THE CONTRACTOR SHALL CALL TOLL FREE 1-800-421-1333 TO VERIFY THE UNDERGROUND LOCATION OF GAS AND TELEPHONE LINES. THE CONTRACTOR SHALL ALSO CALL THE CITY CHAMBER OF COMMERCE TELEPHONE COMPANY AT 1-800-948-4873 TO VERIFY THE CITY MARK THE LOCATION OF UNDERGROUND TELEPHONE LINES.

James F. Stahl 6.16.01
 PROJECT ENGINEER DATE



DOUBLE SCALE
 NO L.A. CO. CHARGE FOR CONNECTION
 SEE SAN. DISTRICT FOR SPECIAL CONNECTION CHARGES
 TEL (562) 699-7411 EXT. 2727

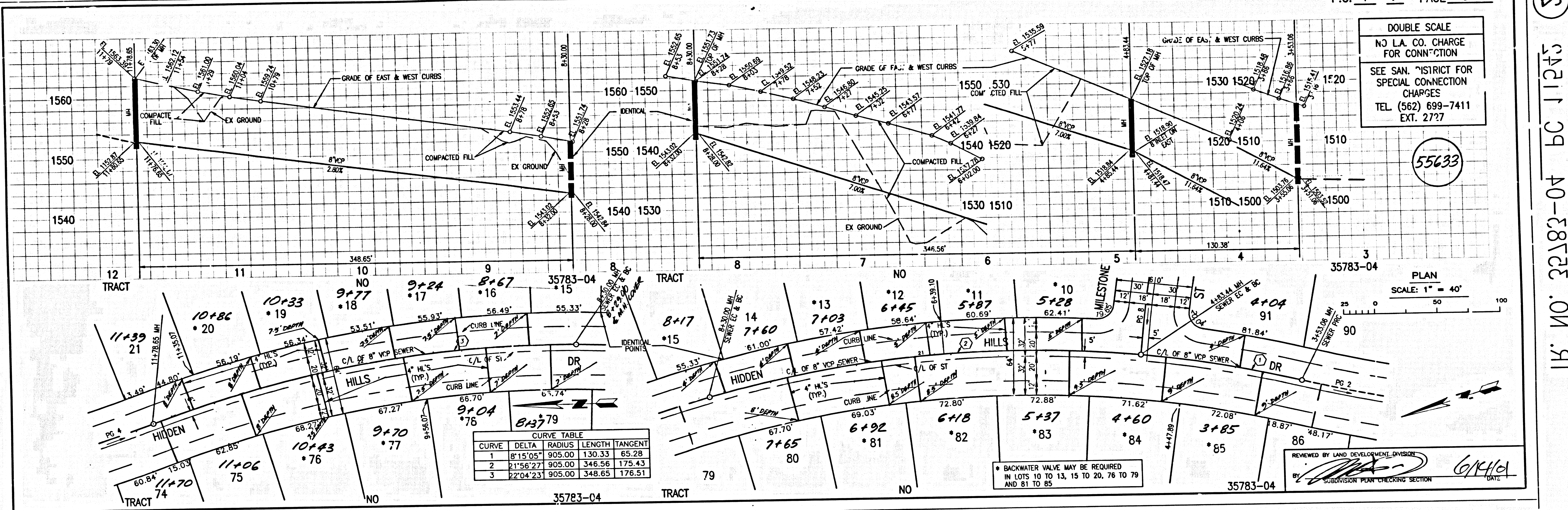
PLANNED PROFESSIONAL ENGINEER
 NO. 19220
 CIVIL
 STATE OF CALIFORNIA
James F. Stahl 6.16.01
 PROJECT ENGINEER DATE

SCALE: 1" = 40'

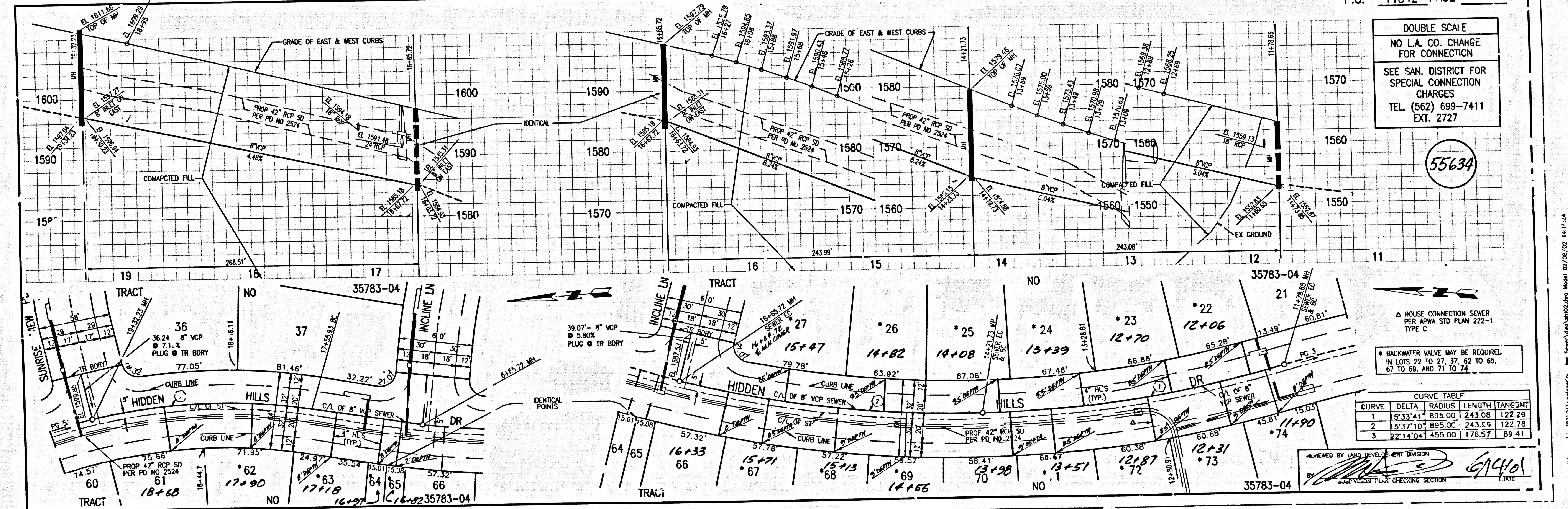
SANITARY SEWER PLANS IN TR. NO. 35783-04 PC NO. 11542
 REVENUED LAND DEVELOPMENT DIVISION
 BY *Phil Dauder* 4/14/01
 COUNTY OF LOS ANGELES DEPARTMENT OF PUBLIC WORKS

SIKAND ENGINEERING ASSOCIATES
 CONSULTING ENGINEERS
 1528 BUSHWICK BLVD.
 VAN NUYS, CALIFORNIA 91411 (818) 787-8550

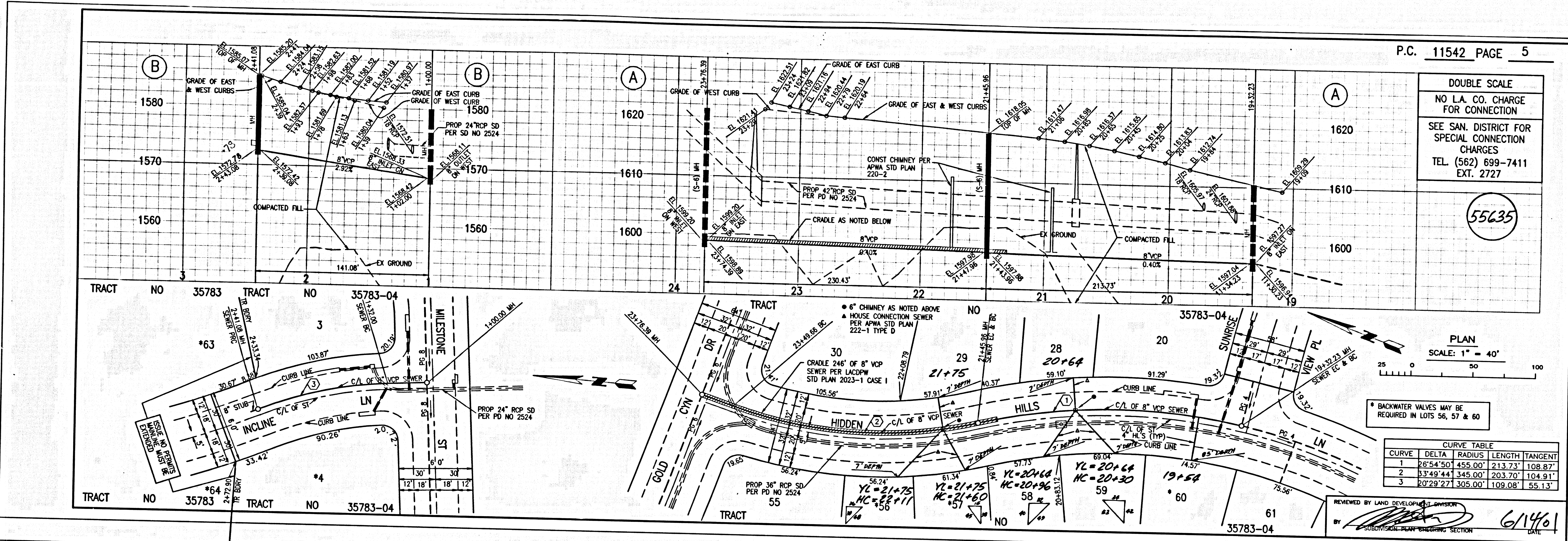
11 24211 09 40-58723. 0M .9T



5 115' NO. 32182-04 BC 11245



5 115' NO. 32182-04 BC 11245



DOUBLE SCALE
 NO L.A. CO. CHARGE
 FOR CONNECTION
 SEE SAN. DISTRICT FOR
 SPECIAL CONNECTION
 CHARGES
 TEL. (562) 699-7411
 EXT. 2727

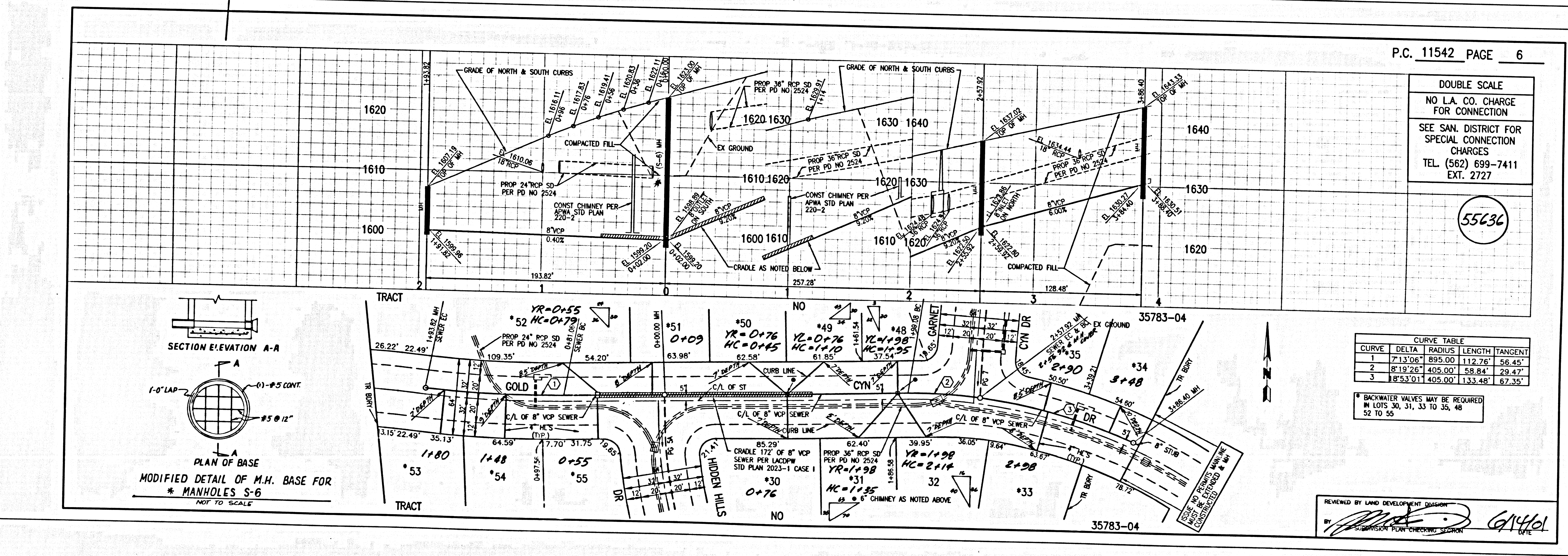
55635

PLAN
 SCALE: 1" = 40'

* BACKWATER VALVES MAY BE
 REQUIRED IN LOTS 56, 57 & 60

CURVE	DELTA	RADIUS	LENGTH	TANGENT
1	26°54'50"	455.00'	213.73'	108.87'
2	33°49'44"	345.00'	203.70'	104.91'
3	07°29'27"	305.00'	109.08'	55.13'

REVIEWED BY LAND DEVELOPMENT DESIGNER
 BY: [Signature] DATE: 6/14/01



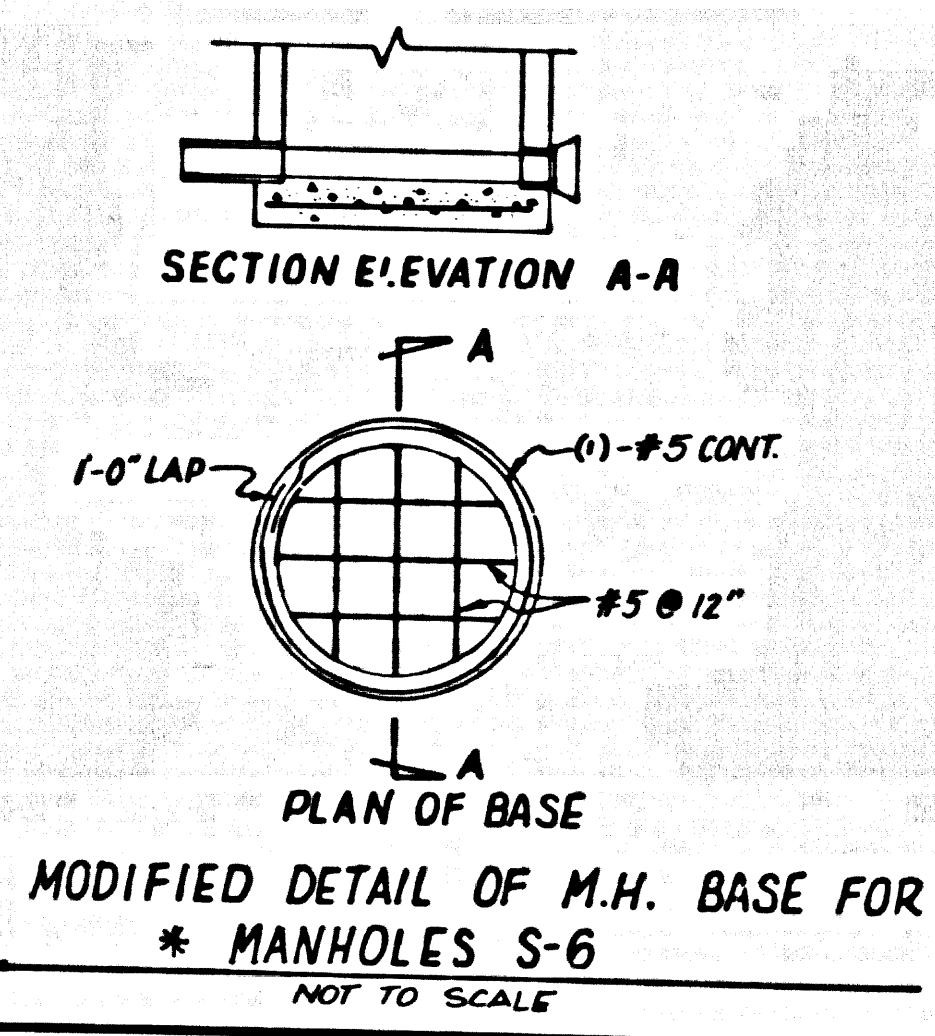
DOUBLE SCALE
 NO L.A. CO. CHARGE
 FOR CONNECTION
 SEE SAN. DISTRICT FOR
 SPECIAL CONNECTION
 CHARGES
 TEL. (562) 699-7411
 EXT. 2727

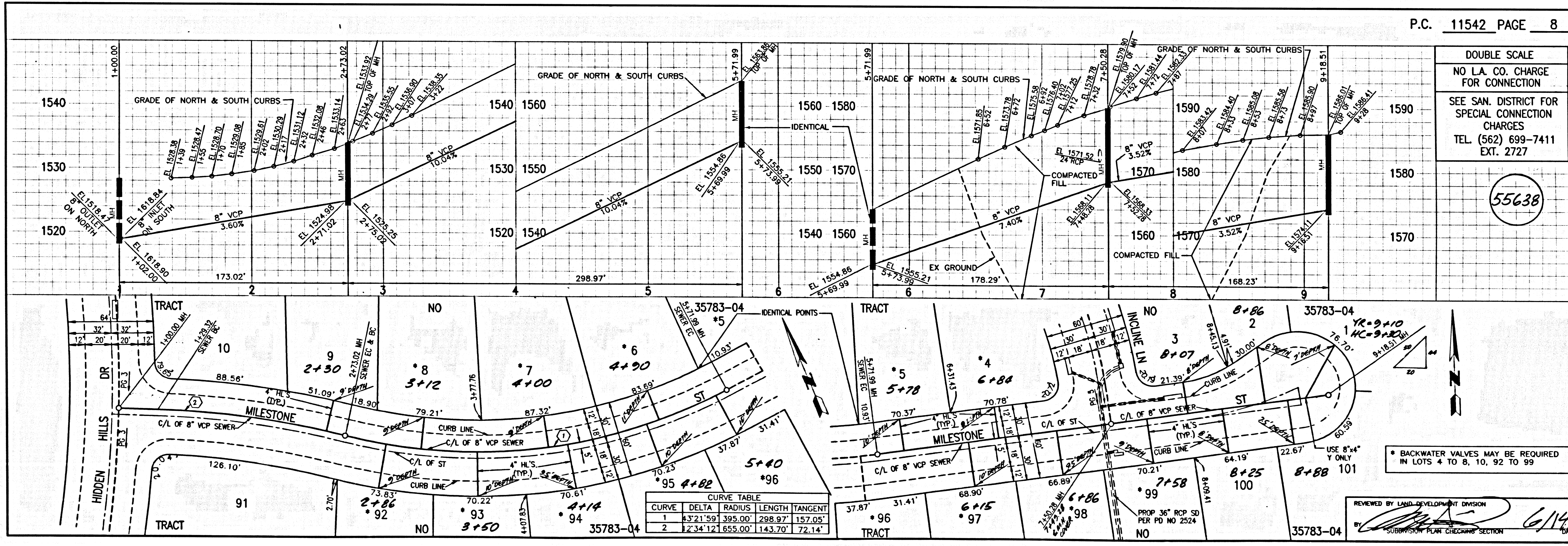
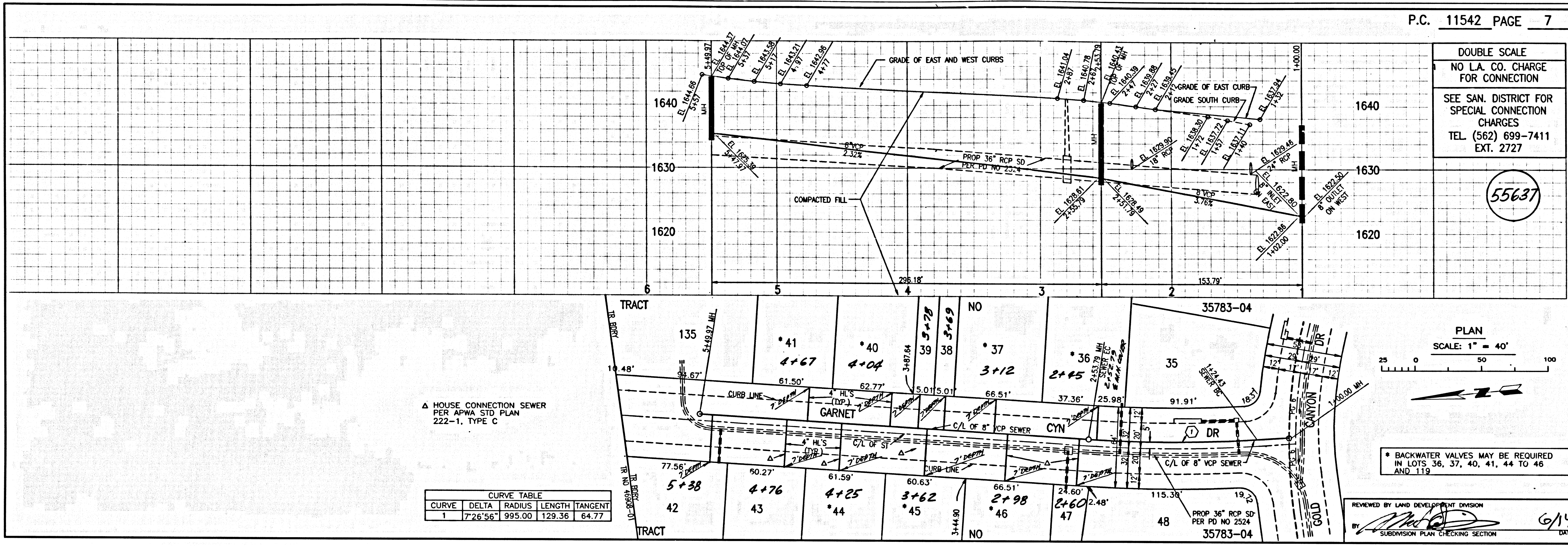
55636

* BACKWATER VALVES MAY BE REQUIRED
 IN LOTS 30, 31, 33 TO 35, 48
 52 TO 55

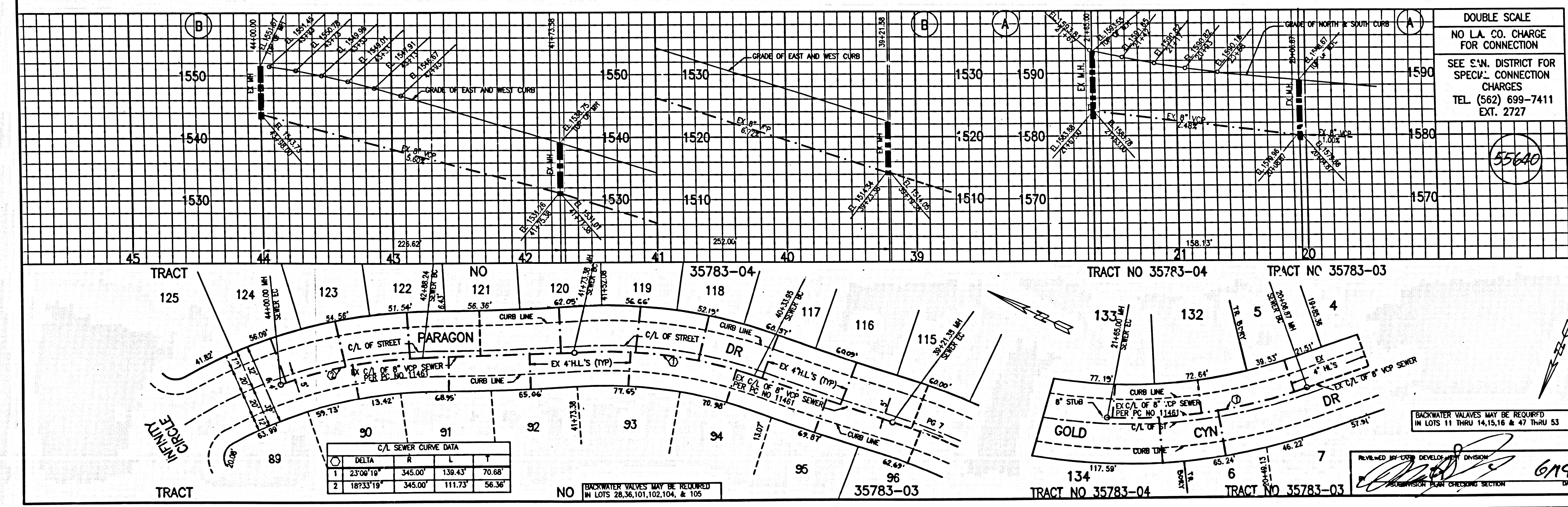
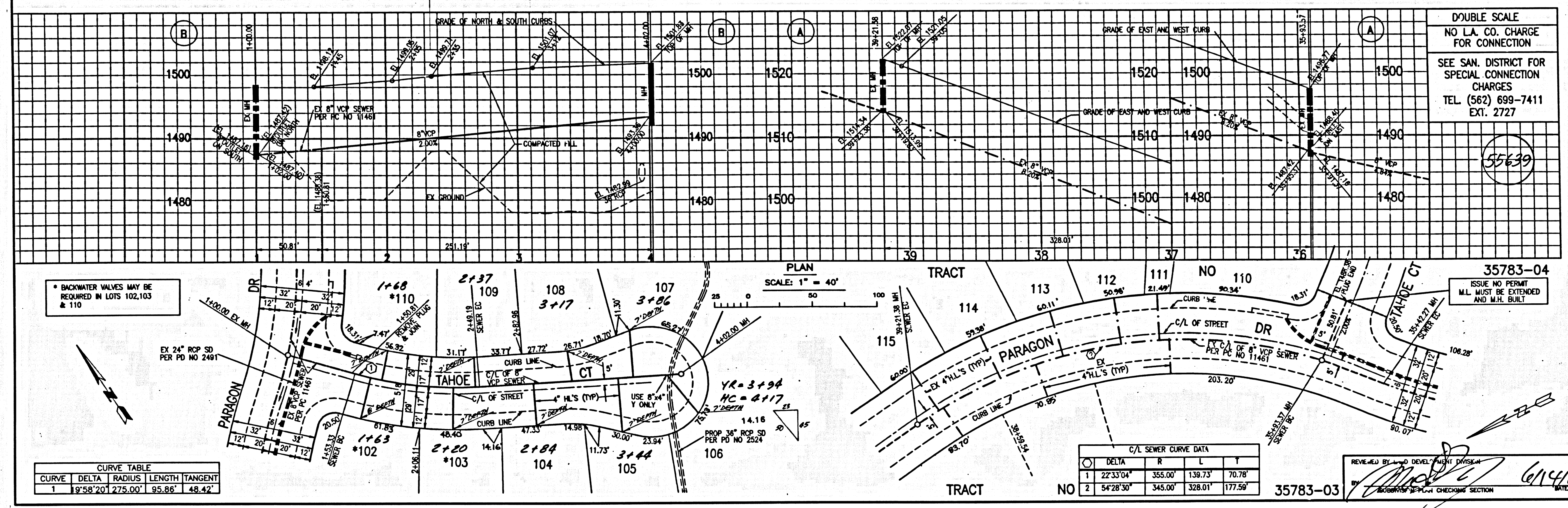
CURVE	DELTA	RADIUS	LENGTH	TANGENT
1	7°13'06"	895.00'	112.76'	56.45'
2	8°19'26"	405.00'	58.84'	29.47'
3	18°53'01"	405.00'	133.48'	67.35'

REVIEWED BY LAND DEVELOPMENT DESIGNER
 BY: [Signature] DATE: 6/14/01





4
 5211 29 40-58735 .0M .9T



2
 24111 09 40-38723 .01 .11

