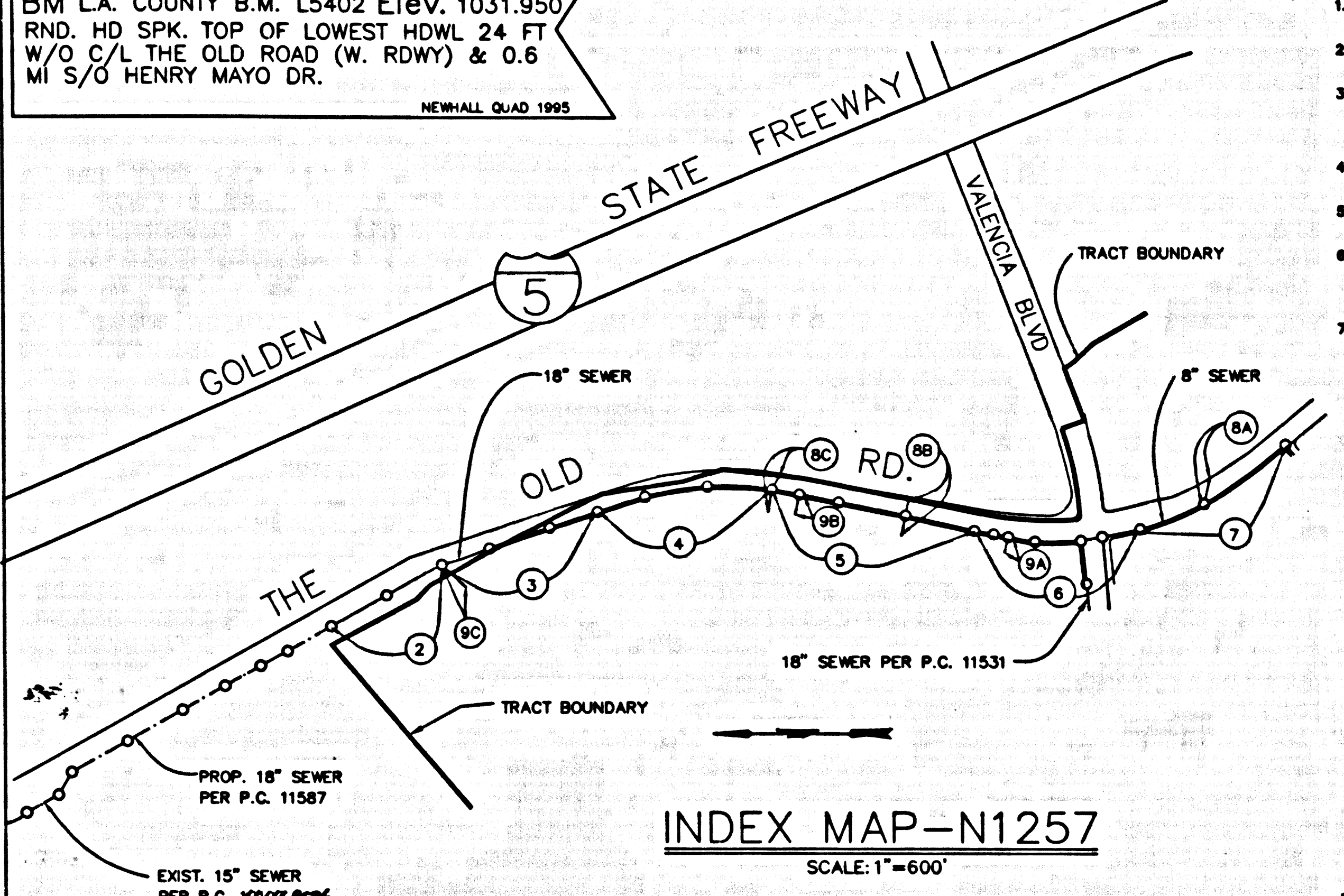


BENCH MARK
BM L.A. COUNTY B.M. L5402 Elev. 1031.950
RND. HD SPK. TOP OF LOWEST HOWL 24 FT
W/O C/L THE OLD ROAD (W. RDWY) & 0.6
MI S/O HENRY MAYO DR.
NEWMALL QUAD 1905



INDEX MAP-N1257
SCALE: 1"=600'

P.C. 11561
NOTE: NUMBERS IN CIRCLES INDICATE PAGE NUMBERS.
THOMAS GUIDE PAGE: 4550-G4

| NO. | REVISION | REVISED BY | APPROVED BY | DATE |
|-----|----------|------------|-------------|------|
| | | | | |
| | | | | |
| | | | | |

ISSUE NO PERMITS, MAINLINE MUST BE EXTENDED AND M.H. CONSTRUCTED

STORMWATER POLLUTION CONTROL REQUIREMENTS FOR SEWER CONSTRUCTION

- 1. Eroded sediments and other pollutants must be retained on site and may not be transported from the site via sheet flow, swales, area drains, natural drainage courses, or wind.
- 2. Stockpiles of earth and other construction related materials must be protected from being transported from the site by the forces of wind or water.
- 3. Fuels, oils, solvents, and other toxic materials must be stored in accordance with their labeling and are not to contaminate the soil and surface waters. All approved storage containers are to be protected from the weather. Spills must be cleaned up immediately and disposed of in a proper manner. Spills may not be released into the drainage system.
- 4. Excess or waste concrete may not be washed into the public way or any other drainage system. Provisions shall be made to retain concrete wastes on site until they can be disposed of as solid waste.
- 5. Trash and construction-related solid wastes must be deposited into a covered receptacle to prevent contamination of rainwater and dispersed by wind.
- 6. Sediments and other materials may not be tracked from the site by vehicle traffic. The construction entrance roadways must be stabilized so as to inhibit sediments from being deposited into the public way. Accidental depositions must be swept up immediately and may not be washed down by rain or other means.
- 7. Any slopes with disturbed soils or denuded of vegetation must be stabilized so as to inhibit erosion by wind and water.

- CA001 - Dewatering Operations
- CA002 - PAVING OPERATIONS
- CA003 - STRUCTURE CONSTRUCTION AND PAINTING
- CA010 - MATERIAL DELIVERY AND STORAGE
- CA020 - SOLID WASTE MANAGEMENT
- CA021 - HAZARDOUS WASTE MANAGEMENT
- CA023 - CONCRETE WASTE MANAGEMENT
- CA024 - SANITARY/SEPTIC WASTE MANAGEMENT
- CA030 - VEHICLE AND EQUIPMENT CLEANING
- CA031 - SCHEDULE AND EQUIPMENT MAINTENANCE
- CA032 - VEHICLE AND EQUIPMENT MAINTENANCE
- ES002 - PRESERVATION OF EXISTING VEGETATION
- ES010 - SEEDING AND PLANTING
- ES011 - MULCHING
- ES020 - GEOTEXTILES AND MATS
- ES021 - DUST CONTROLS
- ES022 - TEMPORARY STREAM CROSSING
- ES023 - CONSTRUCTION ROAD STABILIZATION
- ES024 - STABILIZED CONSTRUCTION ENTRANCE
- ES034 - STORM DRAIN INLET PROTECTION

STANDARD PLANS
THE FOLLOWING LATEST REVISED STANDARD PLANS ON FILE IN THE OFFICE OF THE FOLLOWING DEPARTMENT SHALL APPLY IN THE CONSTRUCTION OF THIS PROJECT.
LOS ANGELES COUNTY DEPARTMENT OF PUBLIC WORKS
LEGEND FOR SANITARY SEWER PLANS AND PROFILES AND DISTRICT MAPS.
2000-0 MINIMUM PUBLIC SAFETY REQUIREMENTS
2015-0 STANDARD MANHOLE STEP
2020-0 READING FOR SEWER PIPE
2023-0 CRADLING AND ENCASUREMENT
2024-0 WYS OR TEE SUPPORT
2027-0 ALLOWABLE TRENCH WIDTHS
2000-0 NON-REINFORCED CONCRETE MANHOLE
210-0 LOCKING MANHOLE FRAME AND COVER
* REFERS TO A.P.W.A. STD. DRAWING NO.

NO CONNECTION FOR THE DISPOSAL OF INDUSTRIAL WASTES SHALL BE MADE TO SEWERS SHOWN ON THESE DRAWINGS UNTIL A PERMIT FOR INDUSTRIAL WASTEWATER DISCHARGE HAS BEEN ISSUED BY THE SANITATION DISTRICTS FOR SAID CONNECTION.

ISSUE NO HOUSE LATERAL CONNECTION PERMITS UNTIL OUTLET SEWER P.C. 11587 IS ACCEPTED FOR PUBLIC USE BY THE COUNTY OF LOS ANGELES.

BEFORE BREAKING INTO OR CONSTRUCTION ON A COUNTY SANITATION DISTRICT SEWER AND PRIOR TO FINAL ACCEPTANCE OF THE PROJECT, SANITATION DISTRICT INSPECTOR SHALL BE NOTIFIED BY PHONE (861) 266-4883 SO THAT REQUIRED INSPECTION CAN BE MADE.

PRIOR TO ACCEPTANCE FOR PUBLIC USE AND MAINTENANCE ALL SANITARY SEWER EASEMENTS SHALL BE RECORDED AND DEDICATED TO L.A. COUNTY.

PRIVATE CONTRACT SEWER GENERAL NOTES

- 1. A sewer construction permit shall be obtained and a fee paid for construction inspection and record plans to the Department of Public Works at the Permit Counter, 900 South Front Street, 8th Floor, Alhambra, at least 72 hours prior to starting work under this permit. Copies of other required permits, such as Road Excavation, Caltrans, etc., must be filed with the permit application.
- 2. Prior to issuance of any permit, the contractor shall file a permit for excavation and trenches from the State of California Division of Industrial Safety, and a Certificate of Worker's Compensation Insurance with the Department of Public Works named as the Certificate Holder to be notified 30 days prior to commencement of work.
- 3. If work is done in a State Highway, a permit must be obtained from the State of California Division of Highways, 120 South Spring Street, Los Angeles, California.
- 4. When work is within a contract city, the contractor must contact the Director of Public Works of that city to determine the location to post the inspection fee.
- 5. The contractor shall contact the district office listed on the "Application for Construction Permit" to arrange for an acceptable construction start date.
- 6. Approval of this plan by the County of Los Angeles does not constitute a representation as to accuracy of the location of or the existence or non-existence of any underground utility pipes or structure within the limits of the project. This note applies to all pages.
- 7. All work shall be in accordance with the latest approved edition of the "Standard Specifications for Public Works Construction, including supplements and the latest Special Provisions for the Construction of Sanitary Sewers and shall be prosecuted only in the presence of the Department of Public Works.
- 8. The contractor's attention is directed to Section 7-10.4.1 of the Standard Specifications for Public Works Construction in regard to safety orders and shall conform to the "Minimum Public Safety Requirements" as shown on Los Angeles Department of Public Works' Standard S-2.
- 9. Elevation are in feet above U.S.C. & G.S. sea level datum of 1929.
- 10. No relocations shall be made in these plans without the approval of the Director of Public Works.
- 11. No representative of the Department of Public Works will survey or lay out any portion of the work.
- 12. Grades to which this improvement is to be constructed are shown on plans and profiles. Grade points for top of curbs, centerlines of streets, or centerlines of alleys, are shown by circles on profiles at all points between said designated points. The grade shall be established so as to conform to a straight line drawn between said designated points.
- 13. The private engineer shall furnish the Department of Public Works with grade sheets and stationing for all house laterals and "T" or "Y" branches and shall provide stakes for them at their proper locations with stationing plainly marked. All house laterals shall be constructed in a straight alignment at right angles from the main line sewer unless shown otherwise on the plans. House laterals from chimneys shall not have an angle of less than 45 degrees with the M.L. sewer. Any change in alignment shall be requested in writing by the private engineer.
- 14. The private engineer shall furnish the house lateral depth at the property line below the top of curb elevation for each house lateral on the grade sheet.

CONSTRUCTION NOTES

- 1. Provide survey stakes on the property line or property lines produced at right angles to the sewer line at the centerline of each manhole.
- 2. Verified day pipe joints shall be type "D" or "G" per standard specifications section 208-2.
- 3. If a pipe runs in within three feet of the sewer, the sewer shall be encased per standard plan S-23, case II, two feet on each side from the point of interference.
- 4. All joints between cast iron pipe and vitrified clay shall be made with a rubber sleeve joint, type "D" (with bushing if necessary) per standard specifications section 208-2.
- 5. House laterals to be constructed with inverts at the property line 6 feet below curb grade except as noted.
- 6. Tee or tee branches may be used for connections to the mainline sewers except as noted.
- 7. If during the course of construction, it is determined that there is less than four feet of cover over the top of a manhole or house lateral V.C.P. sewer which is not indicated on the plans, the pipe shall be encased per standard plan S-23, case II, unless otherwise approved by the Director of Public Works.
- 8. All structures shall be other brick sewer manholes per standard plan S-3 or precast concrete sewer manholes per standard plan S-36, or reinforced precast concrete manholes per standard plan S-3, except as noted.
- 9. Reinforce all trenches within paved areas to meet Los Angeles County Public Works or California State Highway requirements in accordance with the permits.
- 10. Full compliance with section 208-1.3.4 of the standard specification will be required for backfill in street certification of local street completion and same equivalent by a qualified civil engineer shall be provided by the permittee prior to the issuance of a certificate of partial completion.
- 11. All backfill and fills outside of the street right of way shall be compacted to 90% of the maximum density as determined by ASTM soil compaction test D 1557-78 method "D" unless otherwise specified. This shall be certified by a qualified civil engineer. This certification shall be submitted to the Construction Division of the Department of Public Works prior to the acceptance of the work by the county.
- 12. Manhole tops in unimproved rights of way to be 18 inches above finished grade.
- 13. Sewers to be tested for leakage per section 208-1.7.4 of the standard specifications and special provisions.

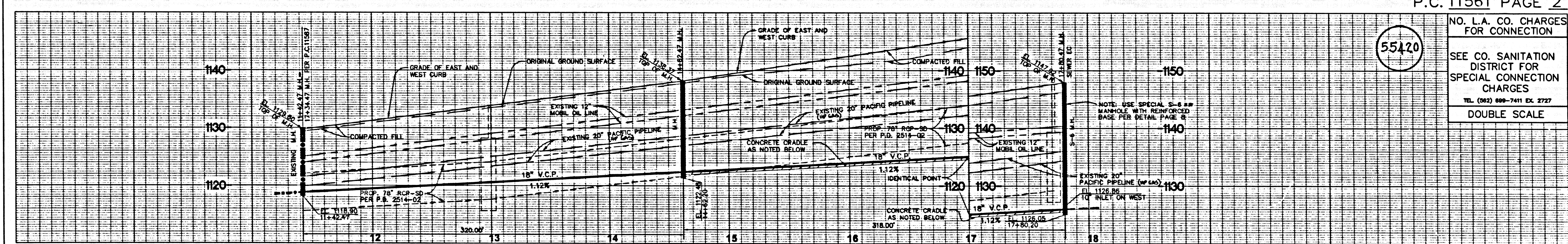
55419

JAMES A. NOYES DIRECTOR OF PUBLIC WORKS
RECOMMENDED LAND DEVELOPMENT DIVISION
BY Thomas H. ... 7/3/61
SUBMITTED BY ... 7/3/61

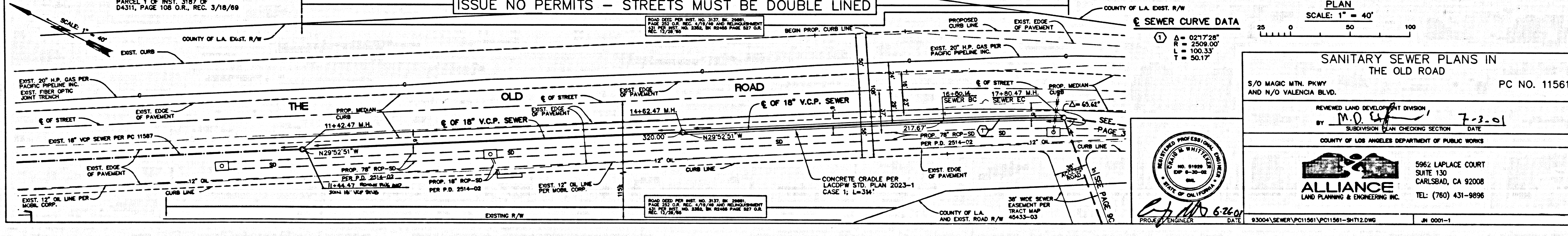
APPROVED: COUNTY SANITATION DISTRICT
OF LOS ANGELES CALIF.
JAMES F. STALE - CHIEF ENGINEER AND GENERAL MANAGER
COUNTY SANITATION DISTRICT NO. 32

DATE: 7-12-2001

PRIVATE ENGINEERS NOTICE TO CONTRACTORS:
THE EXISTENCE AND LOCATION OF ANY UNDERGROUND UTILITY PIPES OR STRUCTURES SHOWN ON THESE PLANS IS REQUIRED BY A SEARCH OF AVAILABLE RECORDS TO THE BEST OF OUR KNOWLEDGE. THERE ARE NO EXISTING UTILITIES EXCEPT AS SHOWN ON THIS MAP. THE CONTRACTOR IS REQUIRED TO TAKE PRECAUTIONARY MEASURES TO PROTECT THE UTILITY LINES SHOWN AND ANY OTHER LINES NOT OF RECORD OR NOT SHOWN ON THIS DRAWING. PRIOR TO EXCAVATION THE CONTRACTOR SHALL CALL CAL FREE 1-800-422-4143 TO VERIFY THE UNDERGROUND LOCATION OF GAS AND TELEPHONE LINES. THE CONTRACTOR SHALL ALSO CALL MR. RAY DUMGLES OF GENERAL TELEPHONE COMPANY AT 1-805-948-4871 SO THAT THEY CAN MARK THE LOCATION OF UNDERGROUND TELEPHONE LINES.
DATE: 6-26-01



ISSUE NO PERMITS - STREETS MUST BE DOUBLE LINED



SEWER CURVE DATA

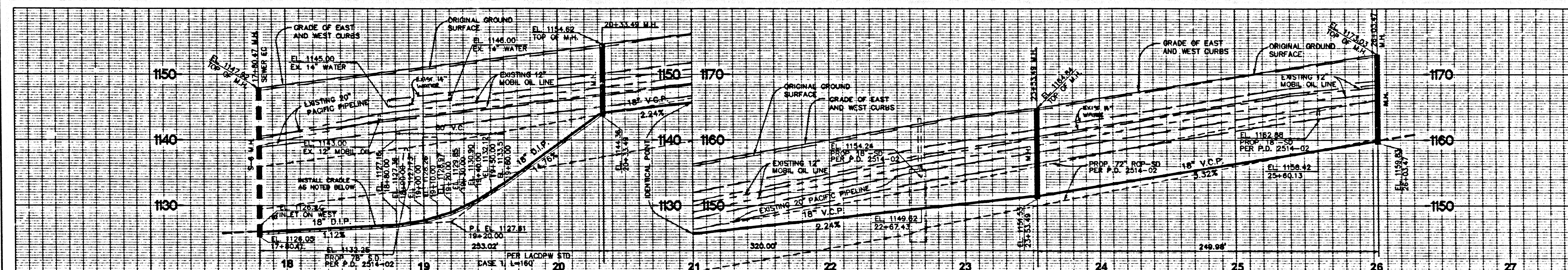
| |
|--------------|
| A = 0217.26' |
| L = 2209.00' |
| T = 50.17' |

55420

NO. L.A. CO. CHARGES FOR CONNECTION
SEE CO. SANITATION DISTRICT FOR SPECIAL CONNECTION CHARGES
DOUBLE SCALE



SANITARY SEWER PLANS IN THE OLD ROAD
S/O MAGIC MTN. PKWY AND N/O VALENCIA BLVD. PC NO. 11561
REVIEWED LAND DEVELOPMENT DIVISION
BY M.D. ... 7-3-01
SUBDIVISION PLAN CHECKING SECTION
COUNTY OF LOS ANGELES DEPARTMENT OF PUBLIC WORKS
ALLIANCE LAND PLANNING & ENGINEERING INC.
5962 LAPLACE COURT SUITE 130 CARLSBAD, CA 92008
TEL: (760) 431-9896
PROJECT ENGINEER DATE: 8/30/04
JOB NO. 0001-1



NO. L.A. CO. CHARGES FOR CONNECTION

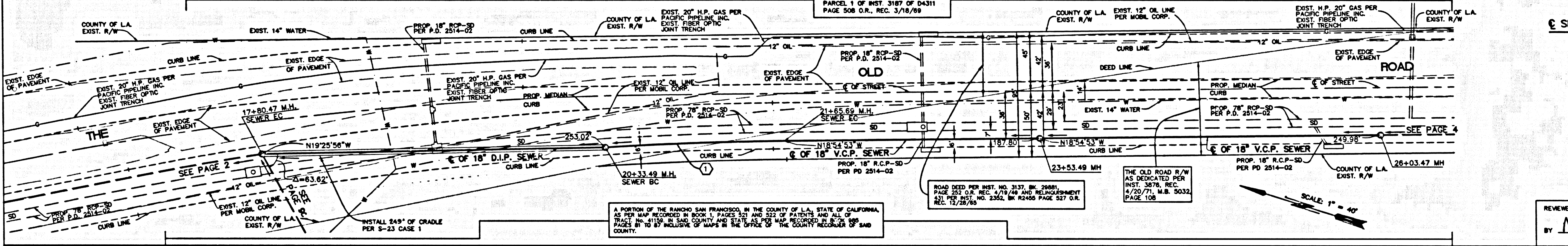
55421

SEE CO. SANITATION DISTRICT FOR SPECIAL CONNECTION CHARGES

TEL. (842) 898-7411 EX. 2727

DOUBLE SCALE

ISSUE NO PERMITS - STREETS MUST BE DOUBLE LINED



SEWER CURVE DATA

1 Δ = 02°57'48"

R = 2556.00'

L = 132.20'

T = 66.11'

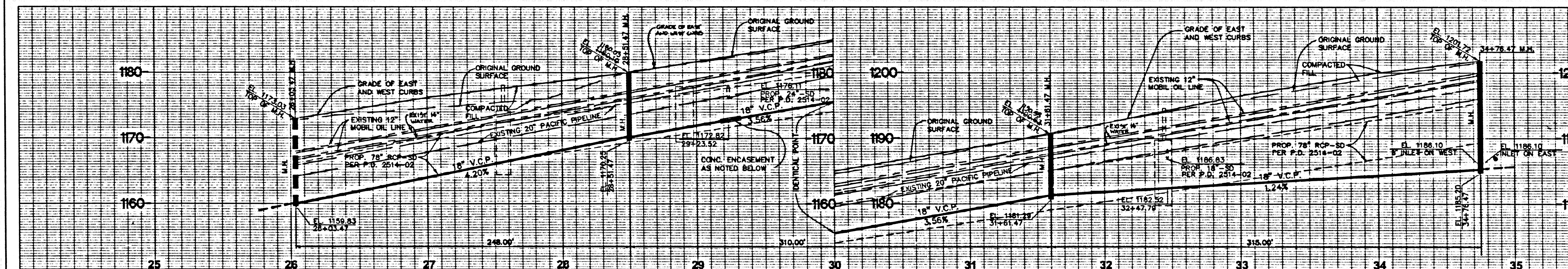
PLAN

SCALE: 1" = 40'

REVIEWED BY LAND DEVELOPMENT DIVISION

BY M.D. [Signature] 7-2-01

SUPERVISOR (PLAN CHECKING SECTION) DATE



NO. L.A. CO. CHARGES FOR CONNECTION

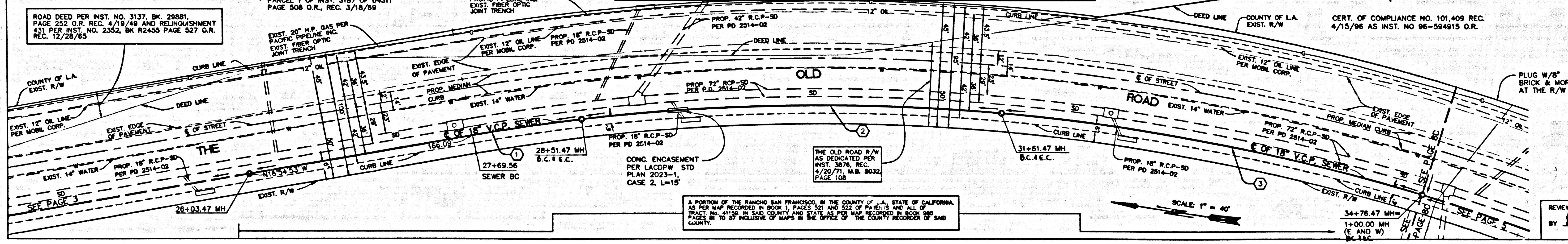
55422

SEE CO. SANITATION DISTRICT FOR SPECIAL CONNECTION CHARGES

TEL. (842) 898-7411 EX. 2727

DOUBLE SCALE

ISSUE NO PERMITS - STREETS MUST BE DOUBLE LINED



SEWER CURVE DATA

1 Δ = 03°12'21"

R = 1464.00'

L = 40.87'

2 Δ = 12°07'56"

R = 1464.00'

L = 310.00'

T = 155.58'

3 Δ = 12°19'41"

R = 1464.00'

L = 315.00'

T = 158.11'

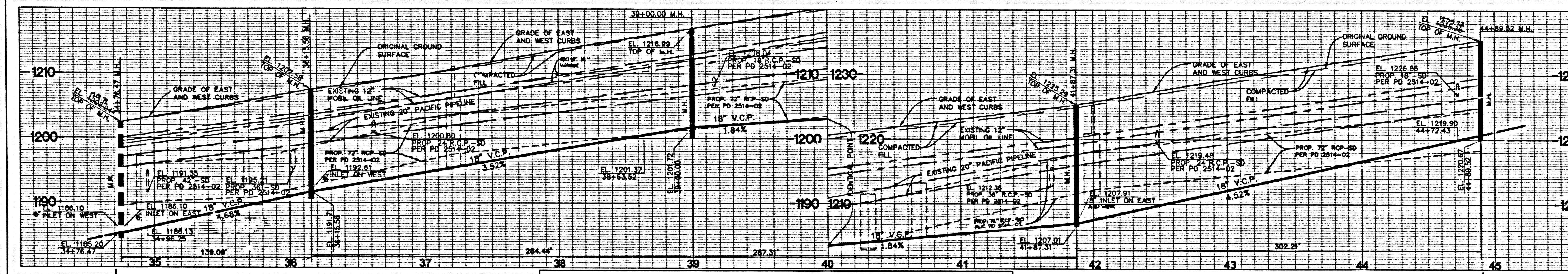
PLAN

SCALE: 1" = 40'

REVIEWED BY LAND DEVELOPMENT DIVISION

BY M.D. [Signature] 7-3-01

SUPERVISOR (PLAN CHECKING SECTION) DATE



NO. L.A. CO. CHARGES FOR CONNECTION

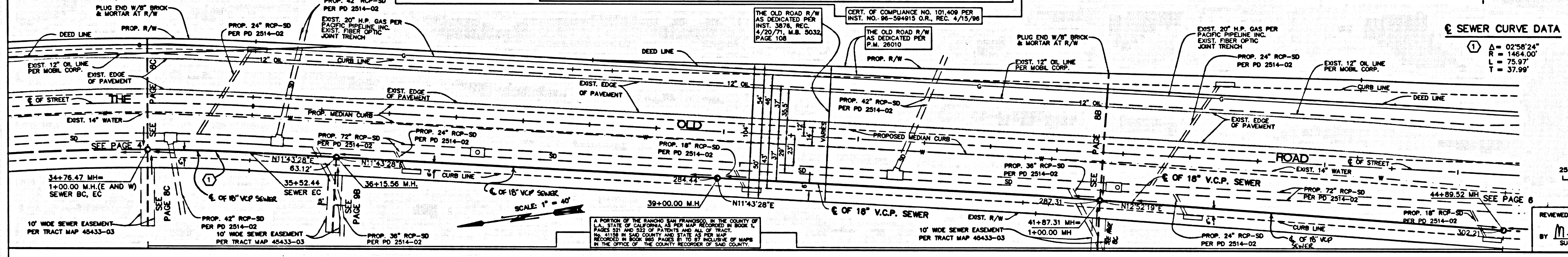
SEE CO. SANITATION DISTRICT FOR SPECIAL CONNECTION CHARGES

TEL. (862) 899-7411 EX. 2727

DOUBLE SCALE

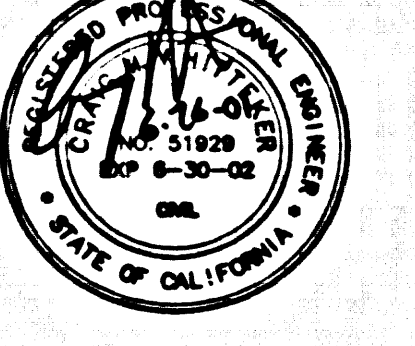
55423

ISSUE NO PERMITS - STREETS MUST BE DOUBLE LINED



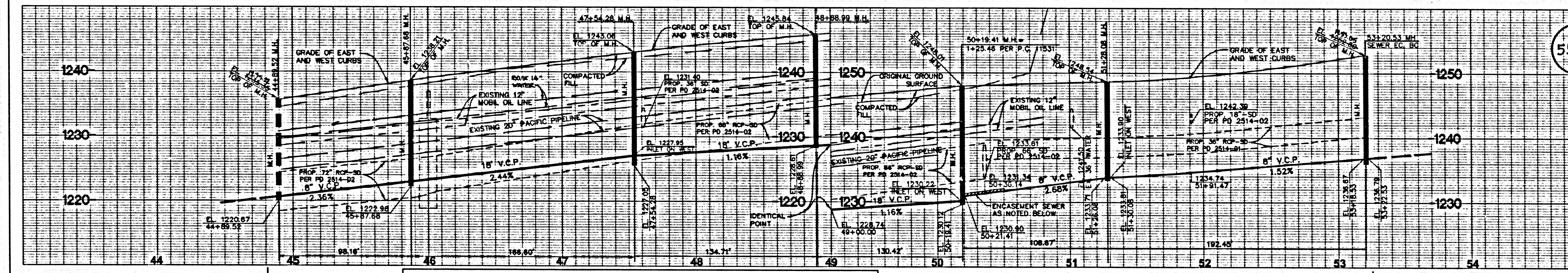
SEWER CURVE DATA

| | |
|---|---------------|
| 1 | A = 02°58'24" |
| | R = 1464.00' |
| | L = 75.97' |
| | T = 37.99' |



PLAN
SCALE: 1" = 40'

REVIEWED BY LAND DEVELOPMENT DIVISION
BY M.D. [Signature] 7-3-01
SUBDIVISION PLAN CHECKING SECTION DATE



NO. L.A. CO. CHARGES FOR CONNECTION

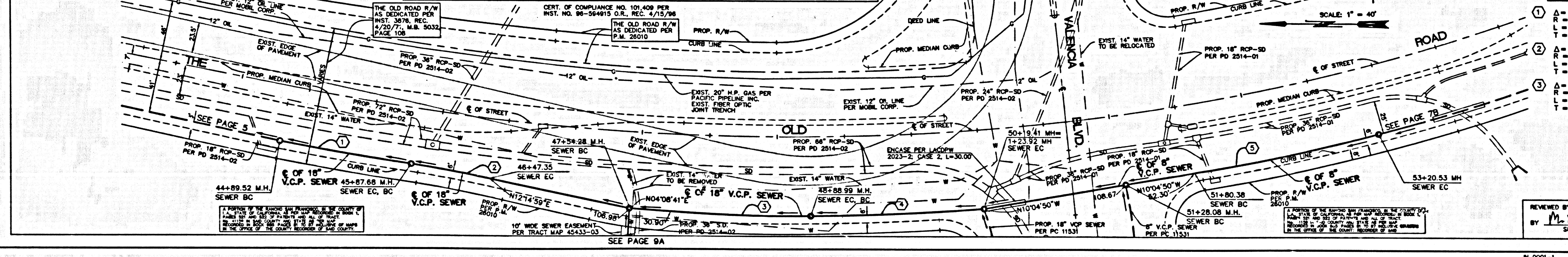
SEE CO. SANITATION DISTRICT FOR SPECIAL CONNECTION CHARGES

TEL. (862) 899-7411 EX. 2727

DOUBLE SCALE

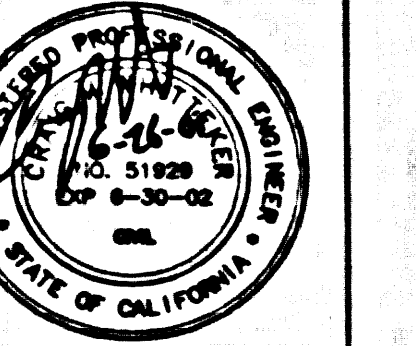
55424

ISSUE NO PERMITS - STREETS MUST BE DOUBLE LINED



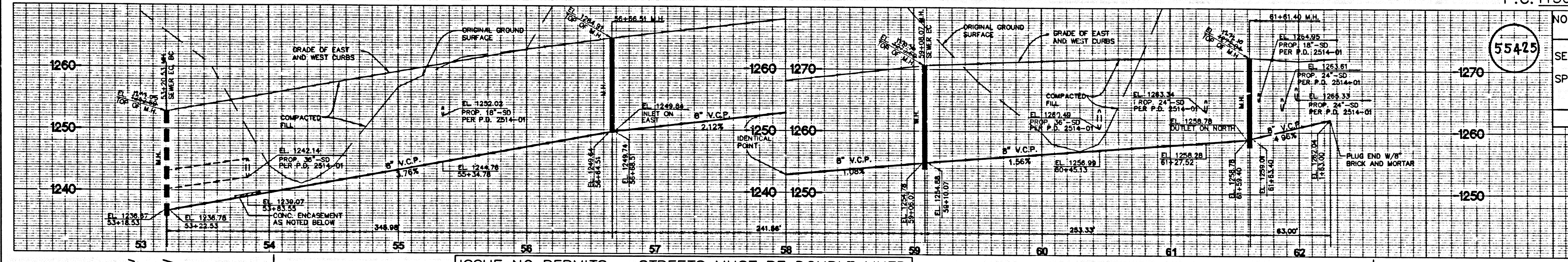
SEWER CURVE DATA

| | |
|---|---------------|
| 1 | A = 03°03'05" |
| | R = 1843.00' |
| | L = 98.16' |
| | T = 48.09' |
| 2 | A = 03°34'49" |
| | R = 955.00' |
| | L = 59.88' |
| | T = 29.85' |
| 3 | A = 40°45'29" |
| | R = 1250' |
| | L = 103.80' |
| | T = 51.93' |
| 4 | A = 04°00'58" |
| | R = 1861.00' |
| | L = 130.43' |
| | T = 65.24' |
| 5 | A = 05°10'14" |
| | R = 1553.00' |
| | L = 140.15' |
| | T = 70.12' |



PLAN
SCALE: 1" = 40'

REVIEWED BY LAND DEVELOPMENT DIVISION
BY M.D. [Signature] 7-3-01
SUBDIVISION PLAN CHECKING SECTION DATE



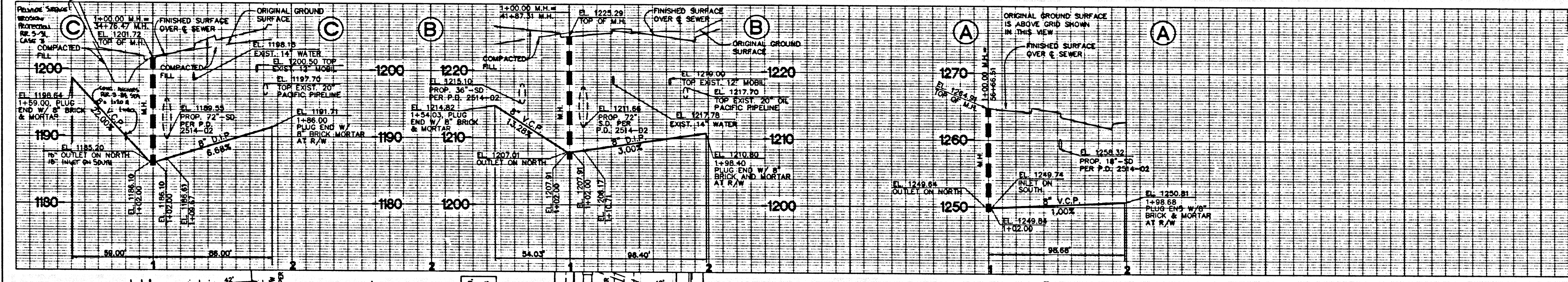
NO. L.A. CO. CHARGES FOR CONNECTION
55425
 SEE CO. SANITATION DISTRICT FOR SPECIAL CONNECTION CHARGES
 TEL. (862) 888-7411 EX. 2727
 DOUBLE SCALE

SEWER CURVE DATA

| | |
|---|--------------|
| 1 | A = 1351'21" |
| | R = 1334.30' |
| | L = 254.23' |
| | T = 162.92' |
| 2 | A = 1022'22" |
| | R = 1334.30' |
| | L = 241.56' |
| | T = 121.11' |

PLAN
 SCALE: 1" = 40'

REVIEWED BY LAND DEVELOPMENT DIVISION
 BY *M.D. Ed* 7-5-01
 SUBDIVISION PLAN CHECKING SECTION DATE



NO. L.A. CO. CHARGES FOR CONNECTION
55426
 SEE CO. SANITATION DISTRICT FOR SPECIAL CONNECTION CHARGES
 TEL. (862) 888-7411 EX. 2727
 DOUBLE SCALE

SANITARY SEWER EASEMENT DATA

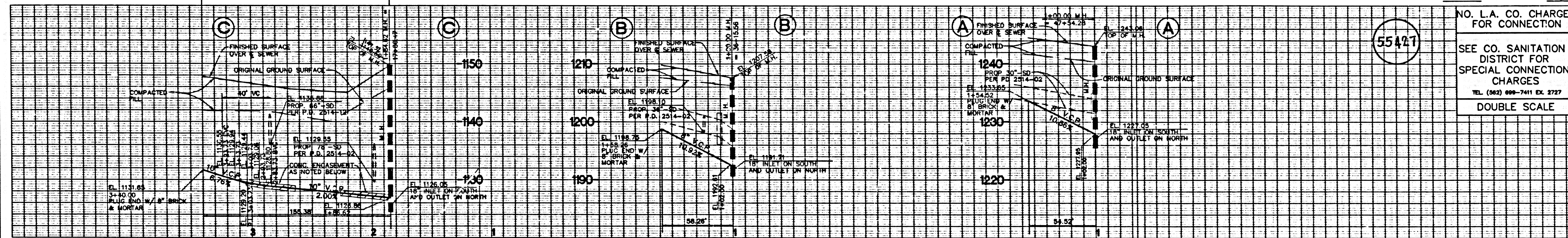
| NO. | BEARING / Δ | RADIUS | LENGTH | TAN. |
|-----|----------------|----------|--------|-------|
| 1 | N 81°5'20" W | | 44.99' | |
| 2 | N 08°44'40" E | | 10.00' | |
| 3 | N 81°15'20" W | | 44.99' | |
| 4 | Δ = 002°23'42" | 1450.00' | 10.00' | 5.00' |
| 5 | N 11°43'21" E | | 10.00' | |
| 6 | N 78°16'39" W | | 40.11' | |
| 7 | N 11°43'21" E | | 10.00' | |
| 8 | N 78°16'39" W | | 39.91' | |

PLAN
 SCALE: 1" = 40'

REVIEWED BY LAND DEVELOPMENT DIVISION
 BY *M.D. Ed* 7-5-01
 SUBDIVISION PLAN CHECKING SECTION DATE

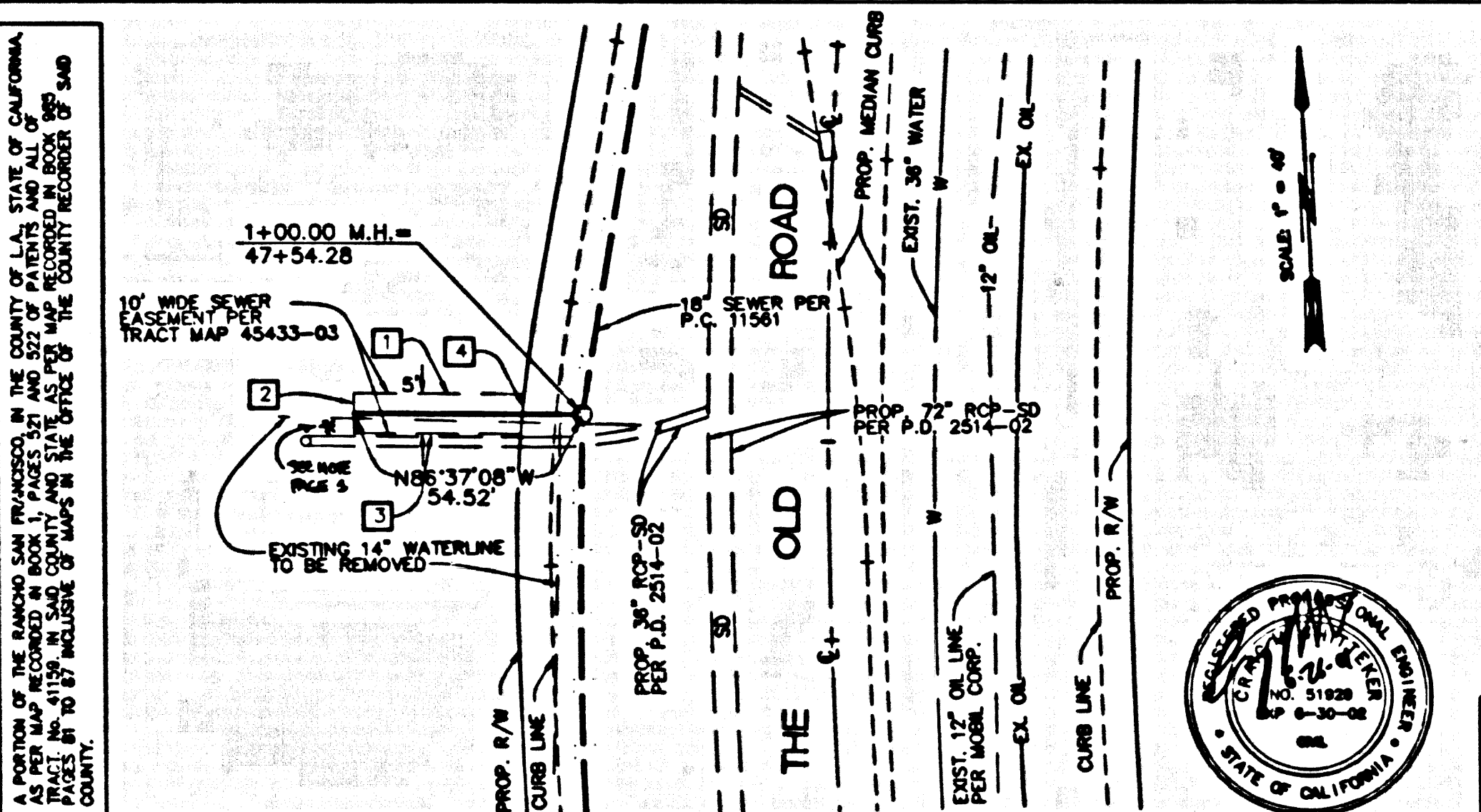
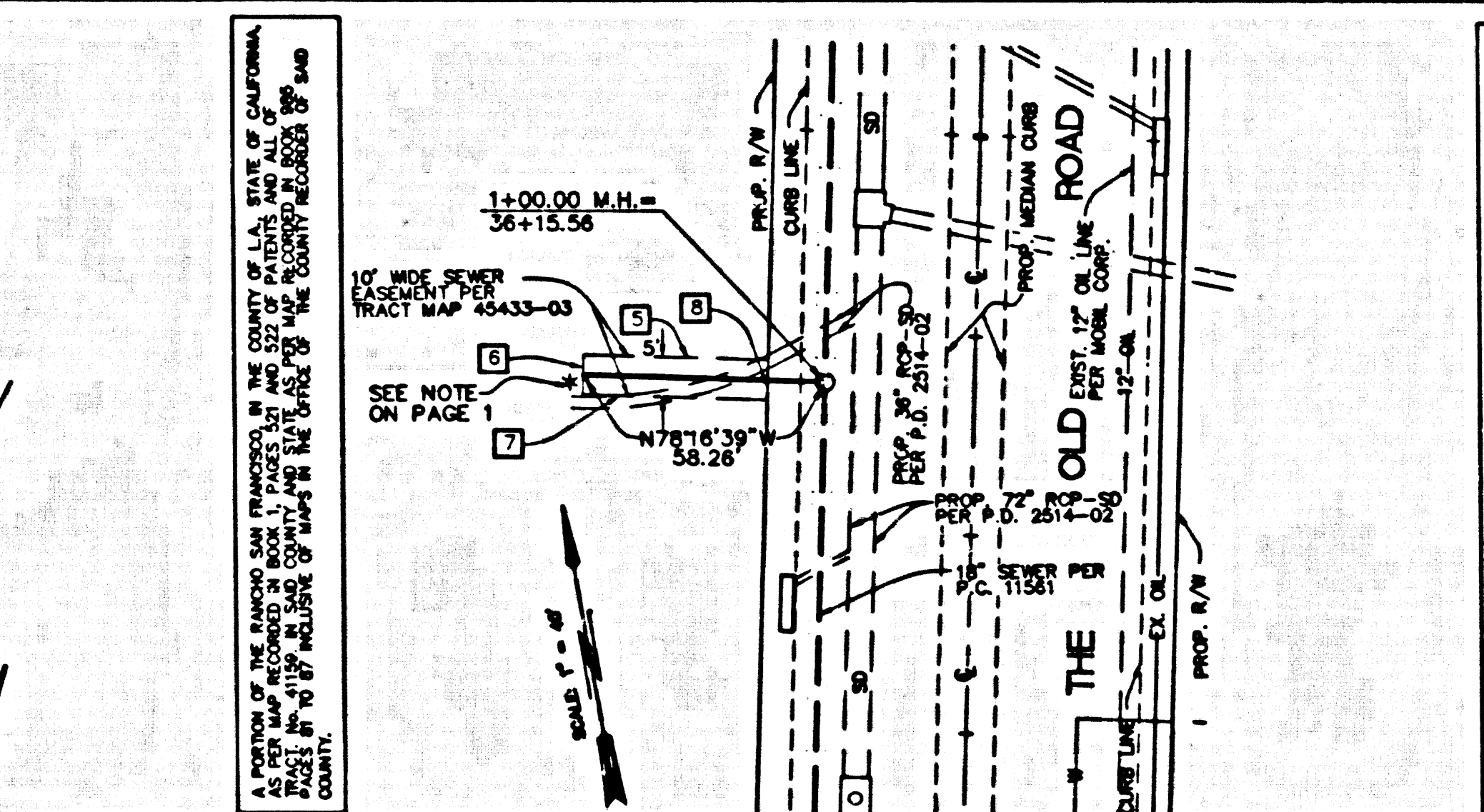
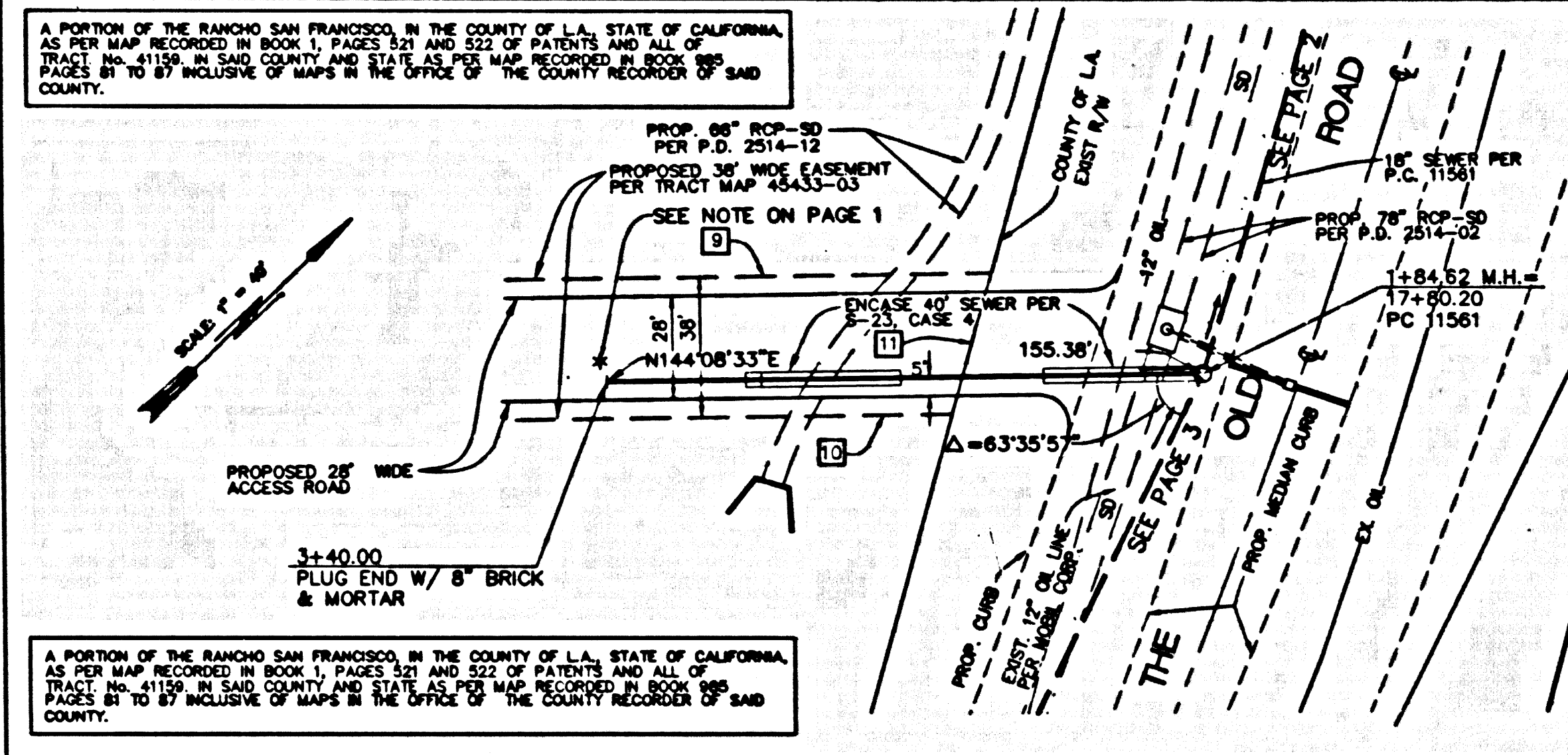
SEE CONST. NOTE 11 ON PAGE 1 REGARDING COMPACTION

P.C.11561 PAGE 9



55421

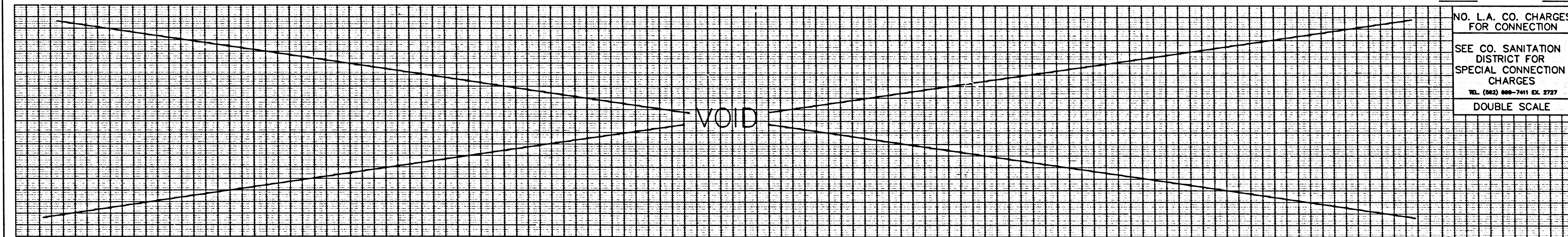
NO. L.A. CO. CHARGES FOR CONNECTION
SEE CO. SANITATION DISTRICT FOR SPECIAL CONNECTION CHARGES
TEL. (862) 888-7411 EX. 2727
DOUBLE SCALE



PLAN
SCALE: 1" = 40'

BY M.D. [Signature] 7-3-01

P.C.11561 PAGE 10



NO. L.A. CO. CHARGES FOR CONNECTION
SEE CO. SANITATION DISTRICT FOR SPECIAL CONNECTION CHARGES
TEL. (862) 888-7411 EX. 2727
DOUBLE SCALE

PLAN
SCALE: 1" = 40'

BY _____