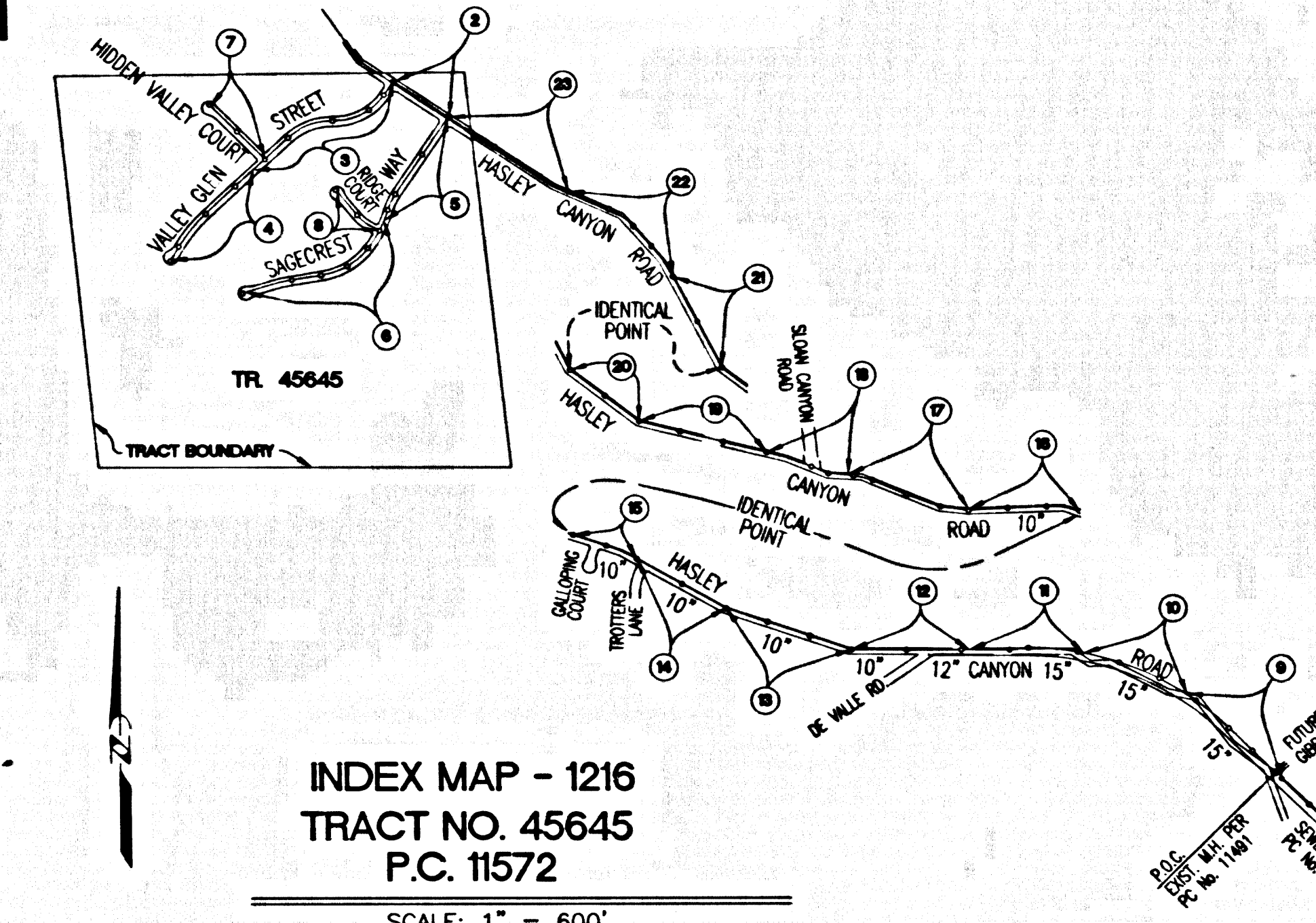


**BENCH MARK**  
 NEWHALL (1993)  
 RD BM TAG IN SE COR CONC BASE OF FIRE HYP 19FT  
 S/O C/L HASLEY CYN RD 1.2MI W/O DEL VALLE RD IN  
 FRONT OF MOBILE HOME PARK 0.15MI E/O ROMERO CYN  
 RD 41FT W/O PP #1001579H  
 ELEV. 1382.246 B.M. No. L 4562



**INDEX MAP - 1216**  
 TRACT NO. 45645  
 P.C. 11572  
 SCALE: 1" = 600'  
 THOMAS GUIDE PG. 4459-B3/B4

NOTE: NUMBER IN CIRCLE INDICATES PAGE NUMBER

NO.	REVISION	REVISED BY	APPROVED BY	DATE

**STORMWATER POLLUTION CONTROL REQUIREMENTS FOR SEWER CONSTRUCTION**

- Eroded sediments and other pollutants must be retained on site and may not be transported from the site via sheet flow, swales, area drains, natural drainage courses, or wind.
- Stockpiles of earth and other construction related materials must be protected from being transported from the site by the forces of wind or water.
- Fuels, oils, solvents, and other toxic materials must be stored in accordance with their labeling and are not to contaminate the soil and surface waters. All approved storage containers are to be protected from the weather. Spills must be cleaned up immediately and disposed of in a proper manner. Spills may not be washed into the drainage system.
- Excess or waste concrete may not be washed into the public way or any other drainage system. Provisions shall be made to retain concrete wastes on site until they can be disposed of as solid waste.
- Trash and construction-related solid wastes must be deposited into a covered receptacle to prevent contamination of rainwater and dispersal by wind.
- Sediments and other materials may not be tracked from the site by vehicle traffic. The construction entrance roadways must be stabilized so as to inhibit sediments from being deposited into the public way. Accidental depositions must be swept up immediately and may not be washed down by rain or other means.
- Any slopes with disturbed soils or denuded vegetation must be stabilized so as to inhibit erosion by wind and water.

- |   |   |
|---|---|
| CA001 - Dewatering Operations               | ESC10 - Seeding and Planting            |
| CA002 - Paving Operations                   | ESC11 - Mulching                        |
| CA003 - Structure Construction and Painting | ESC12 - Geotextiles and Mats            |
| CA010 - Material Delivery and Storage       | ESC21 - Dust Controls                   |
| CA020 - Solid Waste Management              | ESC22 - Temporary Stream Crossing       |
| CA021 - Hazardous Waste Management          | ESC23 - Construction Road Stabilization |
| CA022 - Concrete Waste Management           | ESC24 - Storm Drain Inlet Protection    |
| CA024 - Sanitary/Septic Waste Management    |   |
| CA030 - Vehicle and Equipment Cleaning      |   |
| CA031 - Vehicle and Equipment Fueling       |   |
| CA032 - Vehicle and Equipment Maintenance   |   |
| ESC01 - Scheduling                          |   |
| ESC02 - Preservation of Existing Vegetation |   |

**STANDARD PLANS:**  
 THE FOLLOWING LATEST REVISED STANDARD PLANS ON FILE IN THE OFFICE OF THE FOLLOWING DEPARTMENT SHALL APPLY IN THE CONSTRUCTION OF THIS PROJECT.  
 LOS ANGELES COUNTY DEPARTMENT OF PUBLIC WORKS

2000-0	MINIMUM PUBLIC SAFETY REQUIREMENTS
6008-0	BRICK MANHOLE STEP
2015-0	CRADLING AND ENGAGEMENT
2023-0	WYE OR TEE SUBMITTALS
2027-0	ALLOWABLE TRENCH WIDTHS
2010-0	LOCKING MANHOLE FRAME AND COVER
2001-0	NON-REINFORCED PRECAST CONCRETE MANHOLE
2010-0	BREAK INTO EXISTING MANHOLE
222-0	SPECIAL HOUSE LATERALS
2026-0	EROSION PROTECTION IN STEEP SLOPES
221-0	CHIMNEYS
2028-0	JACKING STEEL CASING FOR SEWER PIPE
220-0	TERMINAL CLEANOUT STRUCTURE
*204-0	* REFERS TO A.P.W.A. STD. DRAWING NO.

**ISSUE NO HOUSE LATERAL CONNECTIONS PERMITS UNTIL OUTLET P.C. 11491 IS ACCEPTED FOR PUBLIC USE BY LOS ANGELES COUNTY**

**THIS SEWER PRIVATE CONTRACT ACCEPTED FOR PUBLIC USE**  
 02-03-2005  
 COUNTY OF LOS ANGELES  
 DEPARTMENT OF PUBLIC WORKS  
 LAND DEVELOPMENT DIVISION

**NO CONNECTION FOR THE DISPOSAL OF INDUSTRIAL WASTES SHALL BE MADE TO SEWERS SHOWN ON THESE DRAWINGS UNTIL A PERMIT FOR INDUSTRIAL WASTEWATER DISCHARGE HAS BEEN ISSUED BY THE SANITATION DISTRICTS FOR THE SAID CONNECTION**  
**BEFORE BREAKING INTO OR CONSTRUCTION ON A COUNTY SANITATION DISTRICT SEWER AND PRIOR TO FINAL ACCEPTANCE OF THE PROJECT A SANITATION DISTRICT INSPECTOR SHALL BE NOTIFIED BY PHONE AT (661) 266-4683 SO THAT REQUIRED INSPECTIONS CAN BE MADE.**

**PRIVATE CONTRACT SEWER GENERAL NOTES**

- A sewer construction permit shall be obtained and a fee paid for construction inspection and record plans to the Department of Public Works at the Permit Counter, 900 South Fremont Avenue, 8th Floor, Alhambra, at least 72 hours prior to starting work under this permit. Copies of all other required permits, such as Road Excavation, Caltrans, etc., must be filed with the permit application.
- Prior to issuance of any permit, the contractor shall file a permit for excavations and trenches from the State of California Division of Industrial Safety, and a Certificate of Worker's Compensation Insurance with the Department of Public Works named as the Certificate Holder to be notified 30 days prior to construction of any work.
- If work is done in a State Highway, a permit must be obtained from the State of California Division of Highways, 120 South Spring Street, Los Angeles, California.
- When work is within a location to pay the inspection fee.
- The contractor shall contact the district office listed on the "Application for Construction Permit" to arrange for an acceptable construction start date.
- Approval of this plan by the County of Los Angeles does not constitute a representation as to accuracy of the location of or the existence or non-existence of any underground utility pipe or structure within the limits of this project. This note applies to all pages.
- All work shall be in accordance with the latest approved edition of the "Standard Specifications for Public Works Construction, including supplements and the latest Special Provisions for the Construction of Sanitary Sewers" and shall be prosecuted only in the presence of the Department of Public Works.
- The contractor's attention is directed to Section 7-10.4.1 of the Standard Specifications for Public Works Construction in regard to safety orders and shall conform to the "Minimum Public Safety Requirements" as shown on Los Angeles Department of Public Works Standard S-2.
- Elevations are in feet above U.S.C. & G.S. sea level datum of 1929.
- No revisions shall be made in these plans without the approval of the Director of Public Works.
- No representative of the Department of Public Works will survey or lay out any portion of the work.
- Grades to which this improvement is to be constructed are shown on plans and profiles. Grade points for top of curbs, centerline of streets, or centerline of alleys, are shown by circles on profiles at all points between designated points. The grade shall be established so as to conform to a straight line drawn between said designated points.
- The private engineer shall furnish the Department of Public Works with grade sheets and stationing for all house laterals and "T" or "Y" branches and shall provide stakes for them at their proper locations with stationing plainly marked. All house laterals shall be constructed in a straight alignment at right angles from the main line sewer except as shown on the plans. House laterals from chimneys shall not have an angle of less than 45 degrees with the M.L. sewer. Any change in alignment shall be requested in writing by the private engineer.
- The private engineer shall furnish the house lateral depth at the property line below the top of curb elevation for each house lateral on the grade sheet.

**CONSTRUCTION NOTES**

- Provide curb stakes on the property line or property lines produced at right angles to the sewer line at the centerline of each manhole.
- Verified city pipe joints shall be type "D" or "T" per standard specifications section 208-2.
- If a pipe joint is within three feet of the sewer, the sewer shall be encased per standard plan S-23, case II, two feet on each side from the point of interference.
- All joints between cast iron pipe and vitrified clay shall be made with a rubber sleeve joint, type "D" (with bushing if necessary) per standard specifications section 206-2.
- House laterals to be constructed with inverts at the property line 6 feet below curb grade except as noted.
- Wye or tee branches may be used for connections to the mainline sewers except as noted.
- If during the course of construction, it is determined that there is less than four feet of cover over the top of a manhole or house lateral V.C.P. sewer which is not indicated on the plans, the pipes shall be encased per standard plan S-23, case II, unless otherwise approved by the Director of Public Works.
- All structures shall be either brick sewer manholes per standard plan S-3 or precast concrete sewer manholes per standard plan S-36, or reinforced precast concrete manholes per standard plan S-6, except as noted.
- Full compliance with section 306-1.3.4, of the standard specification will be required for backfill in street certification of a certificate of partial acceptance.
- All backfill and fill outside of the street right of way shall be compacted to 90% of the maximum density as determined by ASTM soil compaction test D 1557-78 method "D" unless otherwise specified. This shall be certified by a qualified civil engineer. This certification shall be submitted to the Construction Division of the Department of Public Works prior to the acceptance of the work by the county.
- Manhole tops in unimproved rights of way to be six inches above finished grade. Contractor to verify that manholes located in roadway shoulder conform to this requirement.
- Sewers to be tested for leakage per section 306-1/4 of the standard specifications and special provisions. Manhole tops along Hasley Canyon Road will be required to have a 3"x3"x4" thick A.C. pad around the rim. See Detail 1 on page 13.

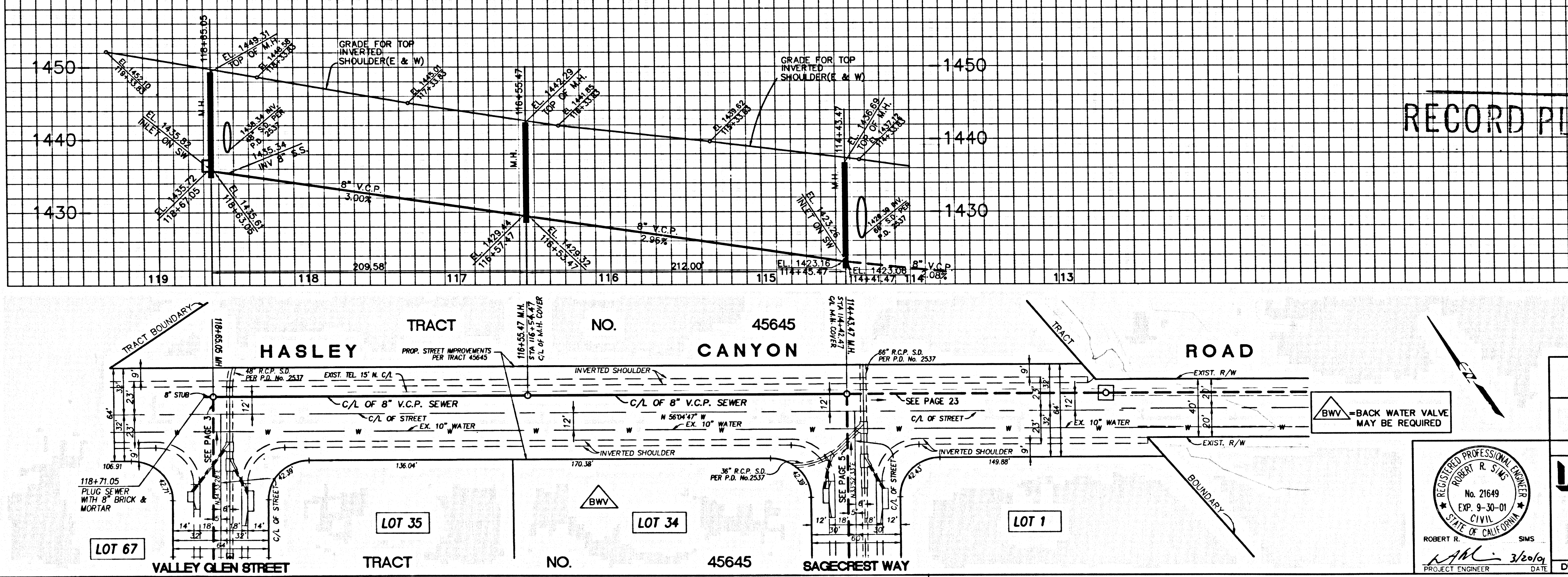
**PROFILE, ALIGNMENT AND GRADE OF SANITARY SEWERS**  
 TO BE CONSTRUCTED IN  
 TRACT NO. 45645 PC NO. 11572  
 INDEX 1216  
 12 SHEETS: 23 PAGES

COUNTY OF LOS ANGELES CALIFORNIA  
 JAMES A. NOYES DIRECTOR OF PUBLIC WORKS  
 APPROVED BY LAND DEVELOPMENT DIVISION  
 BY *Paul Houchens* 3/27/01  
 SUBMITTED BY *nm* 3/27/01  
 SUBDIVISION PLAN CHECKING SECTION DATE

APPROVED: COUNTY SANITATION DISTRICT  
 OF LOS ANGELES CALIF.  
 JAMES F. STAM - CHIEF ENGINEER AND GENERAL MANAGER  
 COUNTY SANITATION DISTRICT NO. 32  
 BY *William Sui* DATE 4/2/01  
 OFFICE ENGINEER

**PRIVATE ENGINEERS NOTICE TO CONTRACTORS:**  
 THE EXISTENCE AND LOCATION OF ANY UNDERGROUND UTILITY PIPES OR STRUCTURES SHOWN ON THESE PLANS IS REQUIRED BY A SEARCH OF AVAILABLE RECORDS TO THE BEST OF OUR KNOWLEDGE. THERE ARE NO EXISTING UTILITIES EXCEPT AS SHOWN ON THIS MAP. THE CONTRACTOR IS REQUIRED TO TAKE PRECAUTIONARY MEASURES TO PROTECT THE UTILITY LINES SHOWN AND ANY OTHER LINES NOT OF RECORD OR NOT SHOWN ON THIS DRAWING. PRIOR TO EXCAVATION THE CONTRACTOR SHALL CALL TOLL FREE 1-800-422-4133 TO VERIFY THE UNDERGROUND LOCATION OF GAS AND TELEPHONE LINES. THE CONTRACTOR SHALL ALSO CALL MR. RAY GUARDINO OF GENERAL TELEPHONE COMPANY AT 1-805-948-4871 SO THAT THEY CAN MARK THE LOCATION OF UNDERGROUND TELEPHONE LINES.  
 DATE 3/29/01  
 RCE No. 21649

**P.C. 11572 PAGE 2**



**DOUBLE SCALE**  
 NO L.A. CO. CHARGES FOR CONNECTIONS  
 SEE COUNTY SAN. DISTRICT FOR SPECIAL CONNECTION CHARGES (562) 699-7411 X-2727

**RECORD PLANS**  
 55494

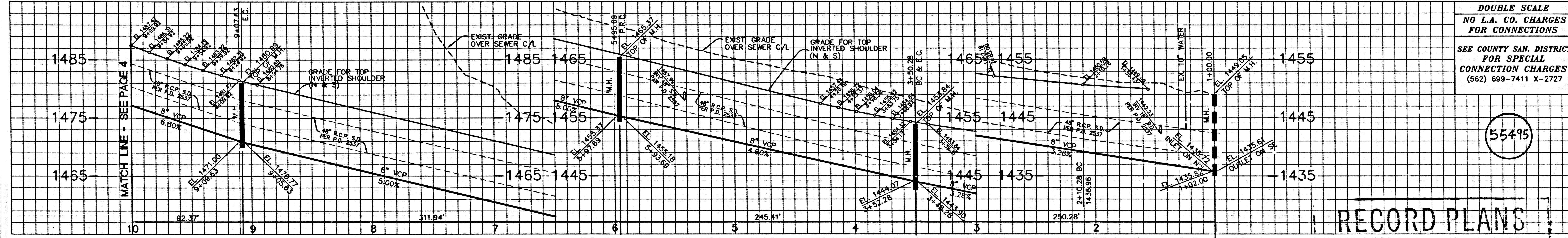
SCALE: VERT: 1" = 8'  
 HORIZ: 1" = 40'

**SANITARY SEWER PLANS IN**  
 TR. NO. 45645 P.C. NO. 11572  
 REVIEWED BY LAND DEVELOPMENT DIVISION  
 BY *M.R. Espartero* 3-27-01  
 SUBDIVISION PLAN CHECKING SECTION DATE

COUNTY OF LOS ANGELES DEPARTMENT OF PUBLIC WORKS  
**LAND DESIGN CONSULTANTS, INC.**  
 Land Planning, Civil Engineering, Surveying & Environmental Services  
 25570 Rye Canyon Road, Suite G  
 Van Nuys, CA 91355  
 (661) 775-3940  
 Project No. 04083-018  
 DWG

**REGISTERED PROFESSIONAL ENGINEER**  
 ROBERT A. STANS  
 No. 21649  
 EXP. 9-30-01  
 CIVIL  
 STATE OF CALIFORNIA  
 PROJECT ENGINEER DATE 3/29/01

STAFF C.P. 24924 ON PT



NO.	DELTA	RADIUS	LENGTH	TANGENT
1	20°18'25"	395.00'	140.00'	70.74'
2	35°35'32"	395.00'	245.41'	126.81'
3	44°07'50"	405.00'	311.94'	164.17'

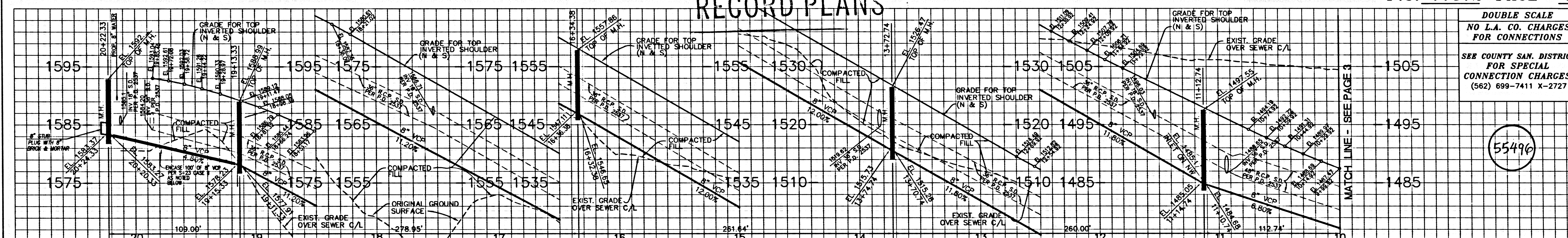
RECORD PLANS

SCALE: VERT. 1" = 8'  
HORIZ. 1" = 40'

REVIEWED BY LAND DEVELOPMENT DIVISION  
BY: *M.D. [Signature]* DATE: 3-27-01  
SUBDIVISION PLAN CHECKING SECTION

PROFESSIONAL ENGINEER  
No. 21649  
Exp. 9-30-01  
STATE OF CALIFORNIA

LEGEND:  
 △ BWV = BACK WATER VALVE MAY BE REQUIRED  
 \* = ENCASE 10' OF 4" H.L.S. PER S-23 CASE II OR AS SHOWN



NO.	DELTA	RADIUS	LENGTH	TANGENT
1	15°54'10"	1005.00'	1278.94'	140.37'

RECORD PLANS

SCALE: VERT. 1" = 8'  
HORIZ. 1" = 40'

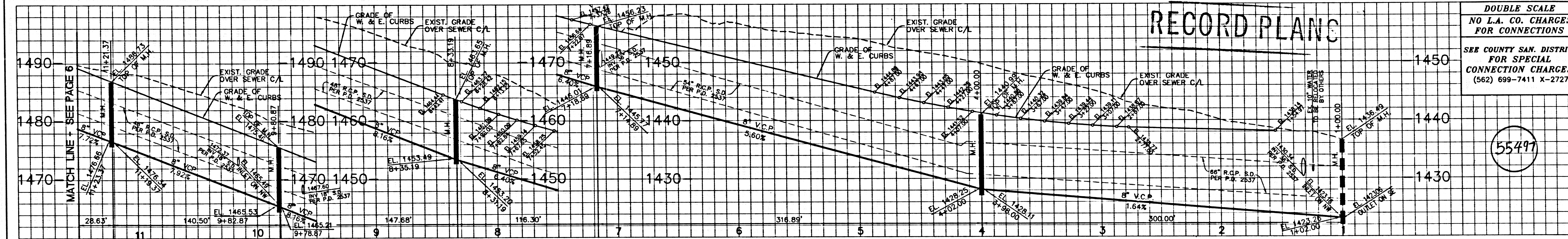
REVIEWED BY LAND DEVELOPMENT DIVISION  
BY: *M.D. [Signature]* DATE: 3-27-01  
SUBDIVISION PLAN CHECKING SECTION

PROFESSIONAL ENGINEER  
No. 21649  
Exp. 9-30-01  
STATE OF CALIFORNIA

LEGEND:  
 △ BWV = BACK WATER VALVE MAY BE REQUIRED  
 \* = ENCASE 10' OF 4" H.L.S. PER S-23 CASE II OR AS SHOWN

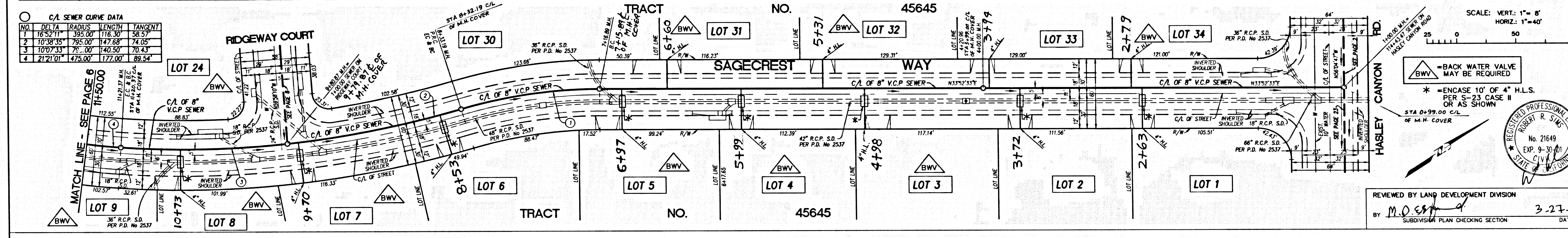
5

STAFF C.P. 24624 ON PT



DOUBLE SCALE  
NO L.A. CO. CHARGES  
FOR CONNECTIONS  
SEE COUNTY SAN. DISTRICT  
FOR SPECIAL  
CONNECTION CHARGES  
(562) 699-7411 X-2727

55497

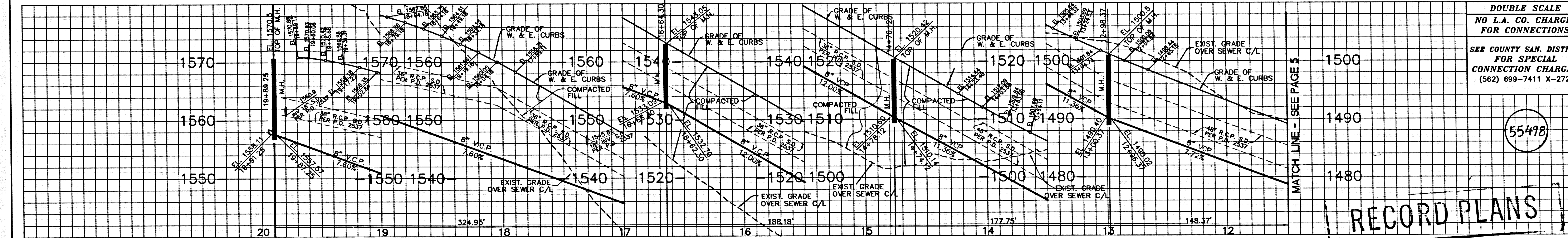


NO.	DELTA	RADIUS	LENGTH	TANGENT
1	18°59'11"	795.00	118.30	58.53
2	10°38'35"	785.00	147.68	74.43
3	10°07'33"	75.00	140.50	70.43
4	21°21'01"	1475.00	177.00	189.54

SCALE: VERT: 1"=8'  
HORIZ: 1"=40'

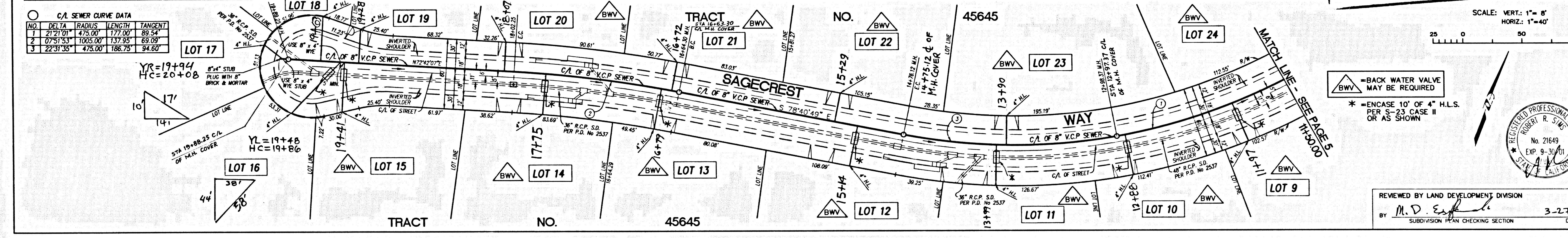
REVIEWED BY LAND DEVELOPMENT DIVISION  
BY M.D. [Signature] 3-27-01  
SUBDIVISION PLAN CHECKING SECTION DATE

STAT. C.P. 24924 .ON PT. 11572



DOUBLE SCALE  
NO L.A. CO. CHARGES  
FOR CONNECTIONS  
SEE COUNTY SAN. DISTRICT  
FOR SPECIAL  
CONNECTION CHARGES  
(562) 699-7411 X-2727

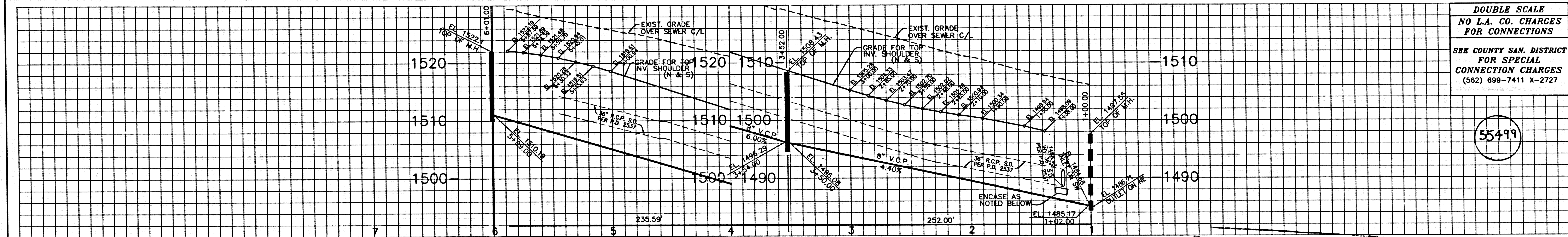
55498



NO.	DELTA	RADIUS	LENGTH	TANGENT
1	21°21'01"	1475.00	177.00	189.54
2	0°51'53"	1005.00	133.95	69.98
3	22°31'35"	1475.00	186.75	94.60

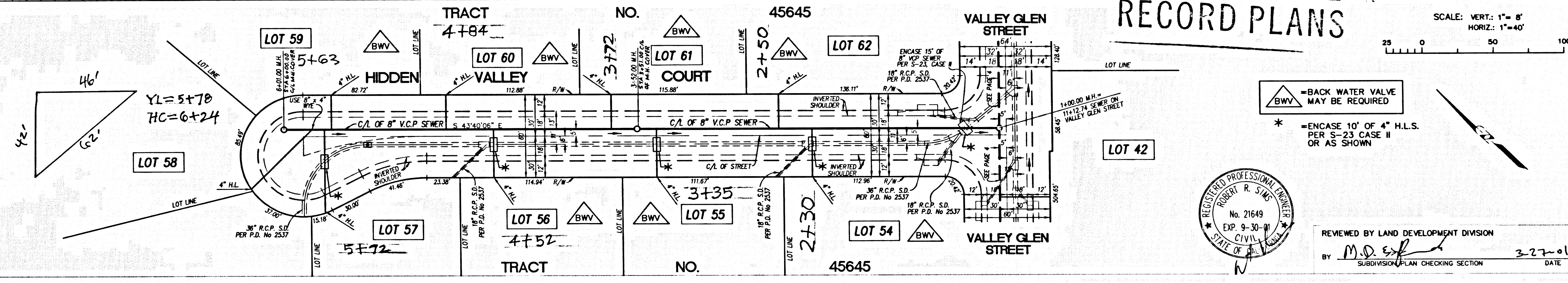
SCALE: VERT: 1"=8'  
HORIZ: 1"=40'

REVIEWED BY LAND DEVELOPMENT DIVISION  
BY M.D. [Signature] 3-27-01  
SUBDIVISION PLAN CHECKING SECTION DATE



DOUBLE SCALE  
NO L.A. CO. CHARGES  
FOR CONNECTIONS  
SEE COUNTY SAN. DISTRICT  
FOR SPECIAL  
CONNECTION CHARGES  
(562) 699-7411 X-2727

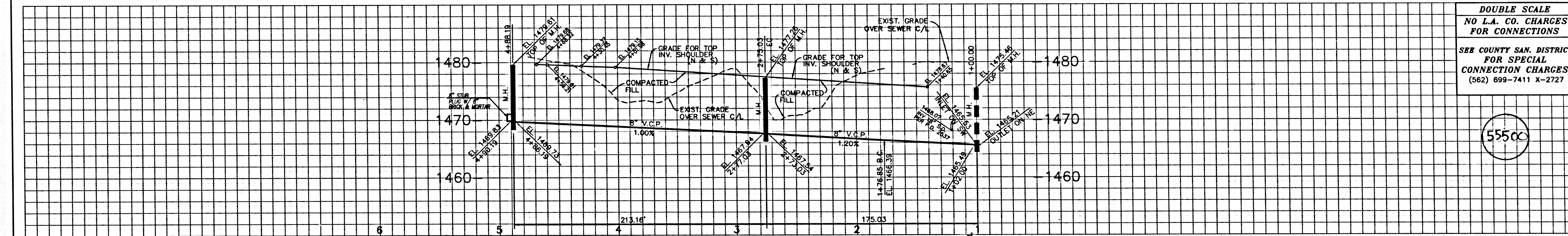
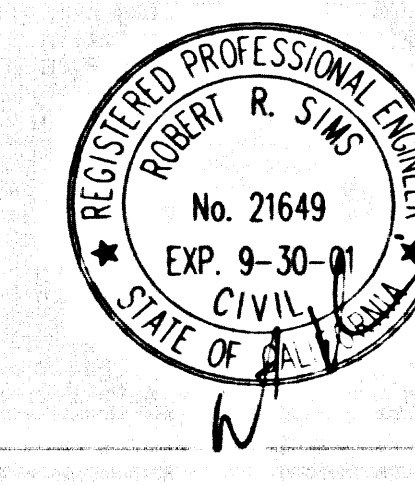
55499



RECORD PLANS

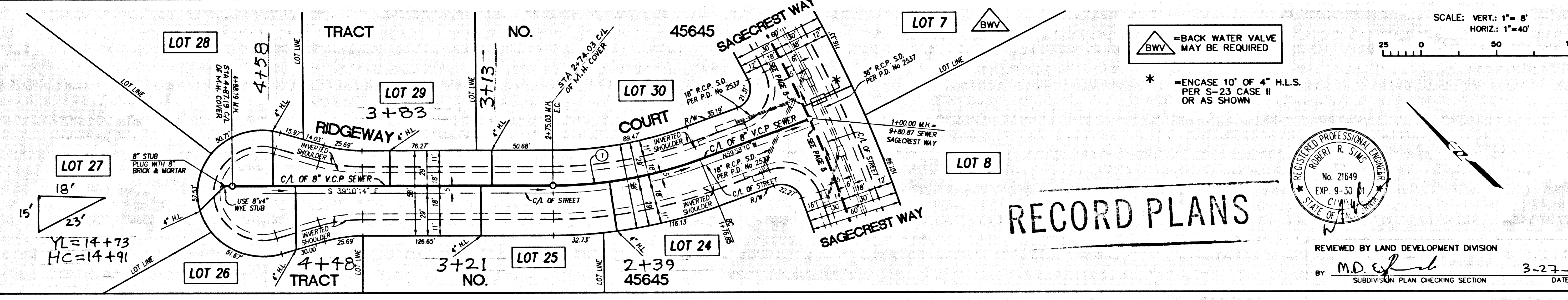
SCALE: VERT.: 1"=8'  
HORIZ.: 1"=40'

REVIEWED BY LAND DEVELOPMENT DIVISION  
BY *M.D. [Signature]* DATE 3-27-01  
SUBDIVISION PLAN CHECKING SECTION



DOUBLE SCALE  
NO L.A. CO. CHARGES  
FOR CONNECTIONS  
SEE COUNTY SAN. DISTRICT  
FOR SPECIAL  
CONNECTION CHARGES  
(562) 699-7411 X-2727

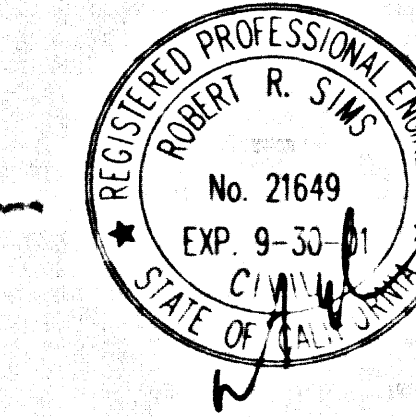
55500



RECORD PLANS

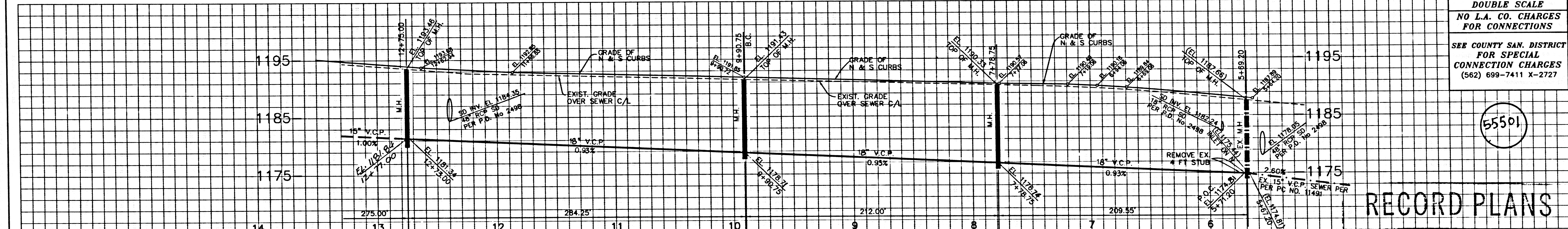
SCALE: VERT.: 1"=8'  
HORIZ.: 1"=40'

REVIEWED BY LAND DEVELOPMENT DIVISION  
BY *M.D. [Signature]* DATE 3-27-01  
SUBDIVISION PLAN CHECKING SECTION



C/A SEWER CURVE DATA			
NO.	BEYOND TRAILERS	LANDING	WARRANTY
1	2077.96'	272.48'	98.16' 49.64'

STAFF 0.9 24024.01 FT

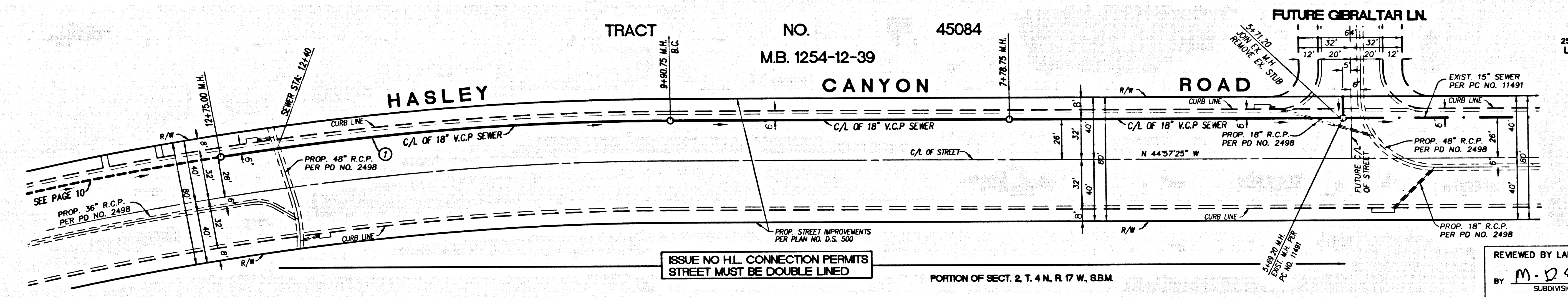


DOUBLE SCALE  
NO L.A. CO. CHARGES  
FOR CONNECTIONS  
SEE COUNTY SAN. DISTRICT  
FOR SPECIAL  
CONNECTION CHARGES  
(562) 699-7411 X-2727

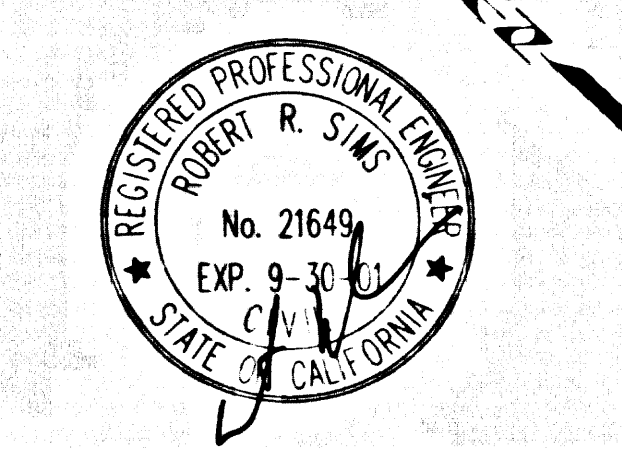
55501

RECORD PLANS

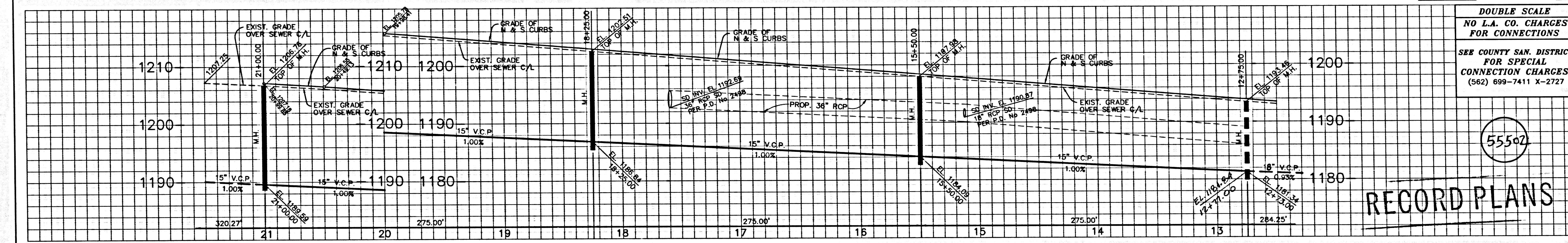
C/L SEWER DATA				
NO.	RADIUS	LENGTH	TANGENT	DELTA
1	1826.00'	284.25'	142.41'	8°55'09"



SCALE: VERT.: 1" = 8'  
HORIZ.: 1" = 40'



REVIEWED BY LAND DEVELOPMENT DIVISION  
BY: M. D. Espinoza  
SUBDIVISION PLAN CHECKING SECTION  
DATE: 3-27-01

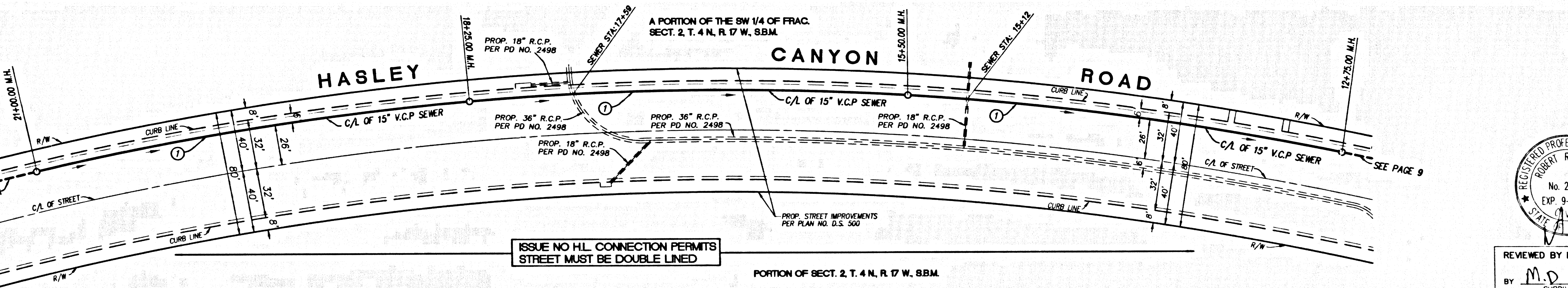


DOUBLE SCALE  
NO L.A. CO. CHARGES  
FOR CONNECTIONS  
SEE COUNTY SAN. DISTRICT  
FOR SPECIAL  
CONNECTION CHARGES  
(562) 699-7411 X-2727

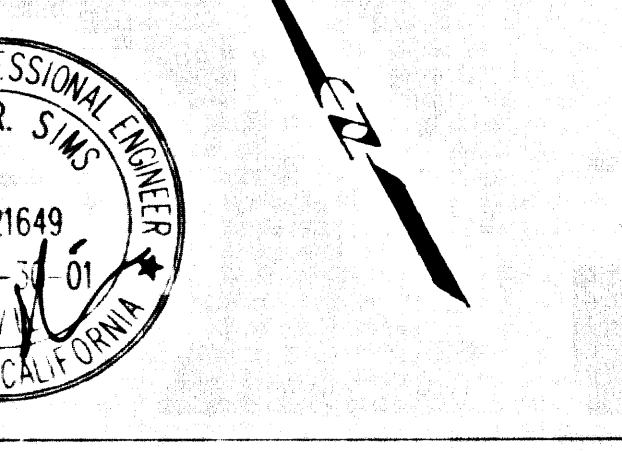
55502

RECORD PLANS

C/L SEWER DATA				
NO.	RADIUS	LENGTH	TANGENT	DELTA
1	1826.00'	275.00'	137.76'	8°37'44"

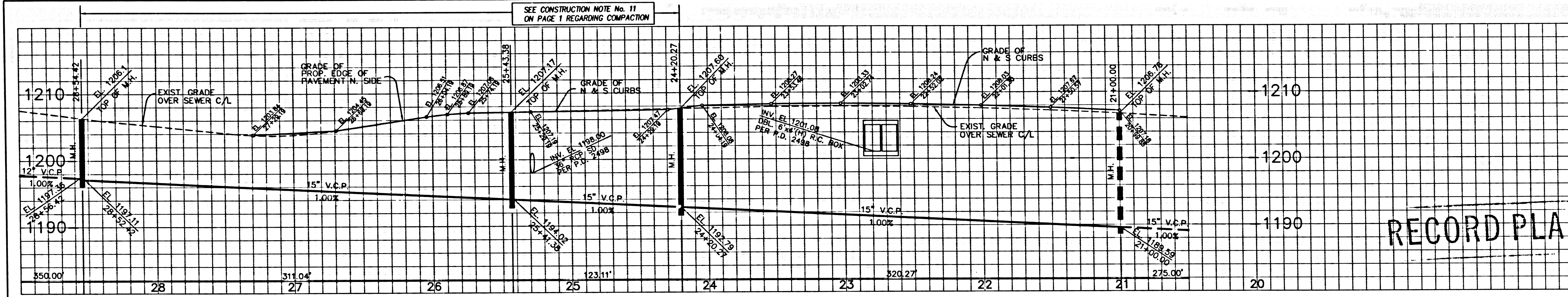


SCALE: VERT.: 1" = 8'  
HORIZ.: 1" = 40'



REVIEWED BY LAND DEVELOPMENT DIVISION  
BY: M. D. Espinoza  
SUBDIVISION PLAN CHECKING SECTION  
DATE: 3-27-01

STAFF C.P. 24924 ON PL. 2

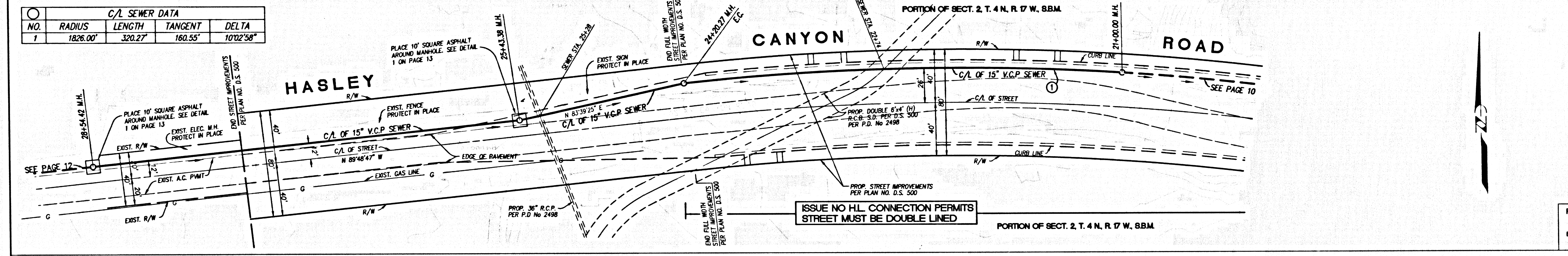


DOUBLE SCALE  
NO L.A. CO. CHARGES  
FOR CONNECTIONS  
SEE COUNTY SAN. DISTRICT  
FOR SPECIAL  
CONNECTION CHARGES  
(562) 699-7411 X-2727

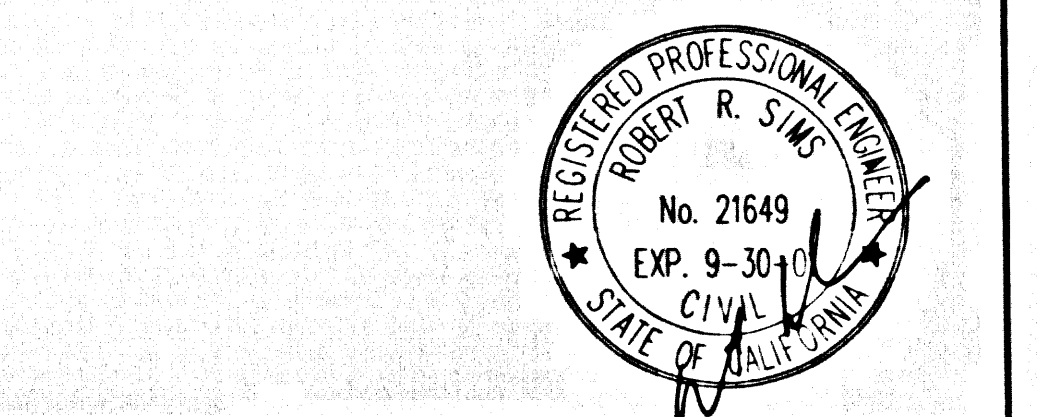
55503

RECORD PLANS

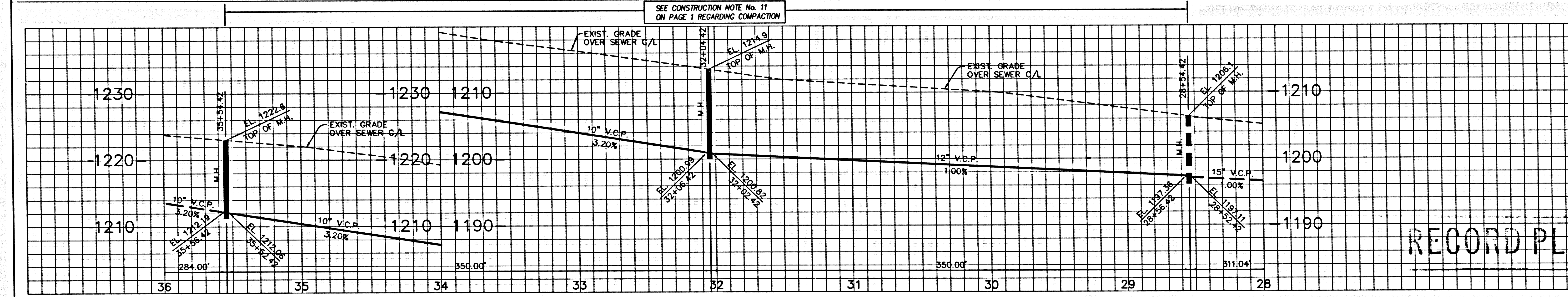
NO.	RADIUS	C/A SEWER TANGENT	DELTA
1	1826.00'	320.27'	10122'58"



SCALE: VERT: 1"=8'  
HORIZ: 1"=40'



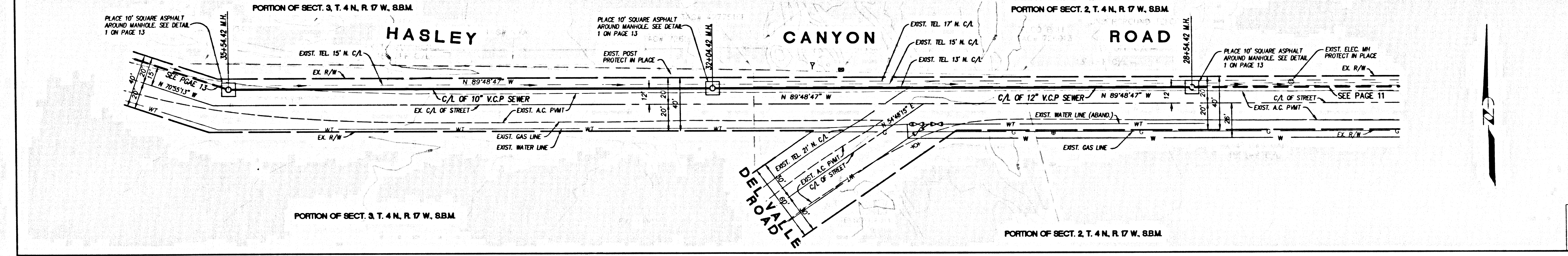
REVIEWED BY LAND DEVELOPMENT DIVISION  
BY M. D. Espinoza 3-27-01  
SUBDIVISION PLAN CHECKING SECTION DATE



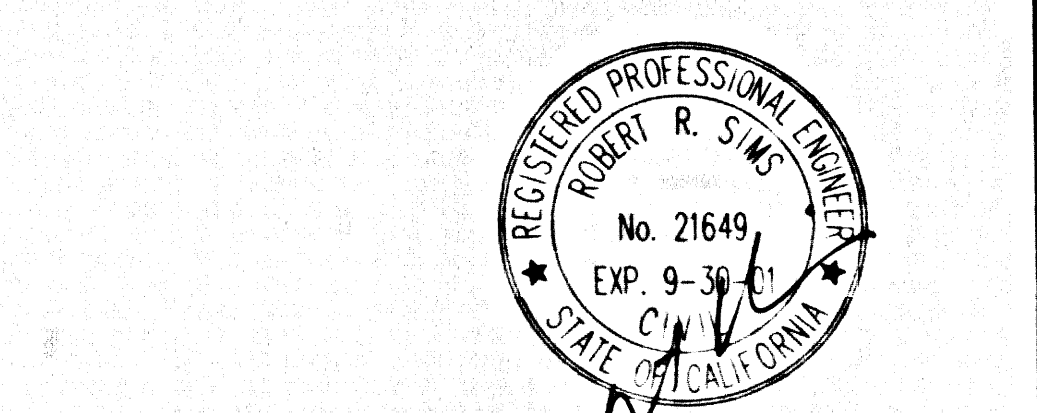
DOUBLE SCALE  
NO L.A. CO. CHARGES  
FOR CONNECTIONS  
SEE COUNTY SAN. DISTRICT  
FOR SPECIAL  
CONNECTION CHARGES  
(562) 699-7411 X-2727

55504

RECORD PLANS

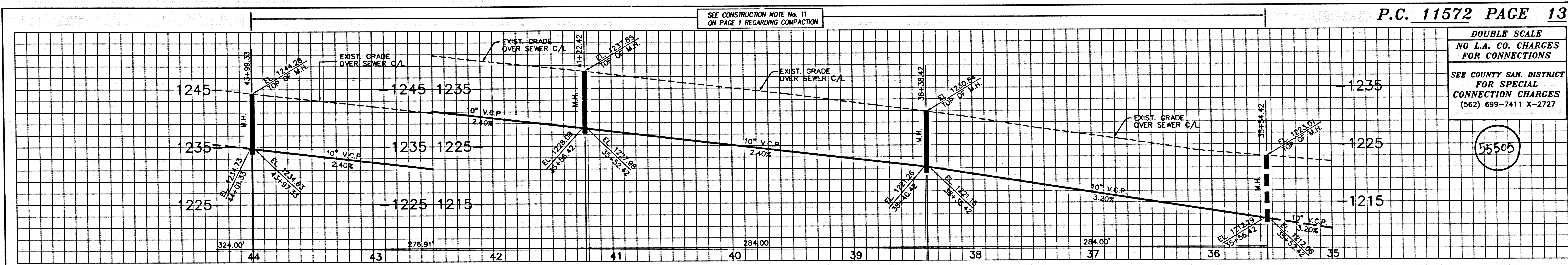


SCALE: VERT: 1"=8'  
HORIZ: 1"=40'



REVIEWED BY LAND DEVELOPMENT DIVISION  
BY M. D. Espinoza 3-27-01  
SUBDIVISION PLAN CHECKING SECTION DATE

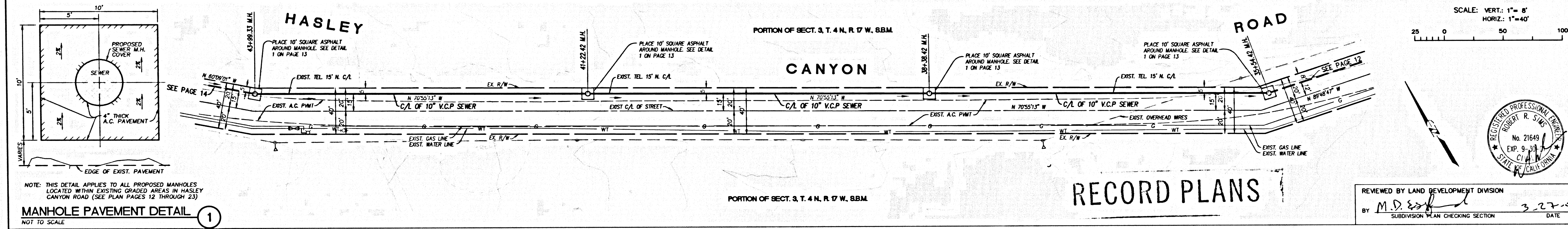
STAT. C. 9 24024.0N .PT



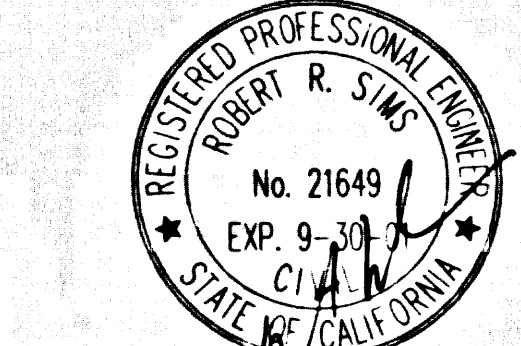
DOUBLE SCALE  
NO L.A. CO. CHARGES  
FOR CONNECTIONS

SEE COUNTY SAN. DISTRICT  
FOR SPECIAL  
CONNECTION CHARGES  
(562) 699-7411 X-2727

55505



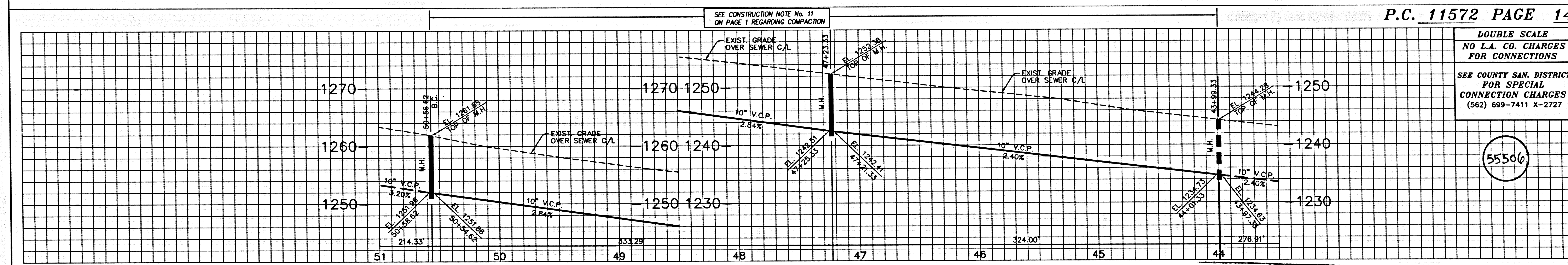
SCALE: VERT. 1" = 8'  
HORIZ. 1" = 40'



REVIEWED BY LAND DEVELOPMENT DIVISION  
BY M.D. [Signature] 3-27-11  
SUBDIVISION PLAN CHECKING SECTION DATE

NOTE: THIS DETAIL APPLIES TO ALL PROPOSED MANHOLES  
LOCATED WITHIN EXISTING GRADED AREAS IN HASLEY  
CANYON ROAD (SEE PLAN PAGES 12 THROUGH 23)

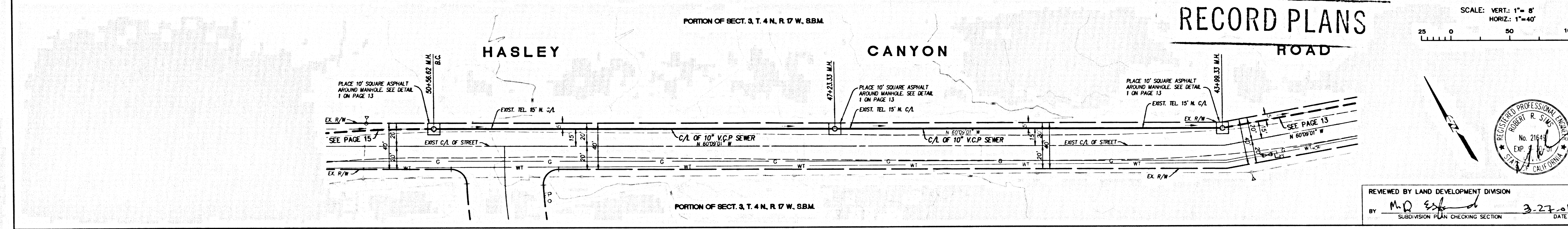
MANHOLE PAVEMENT DETAIL 1  
NOT TO SCALE



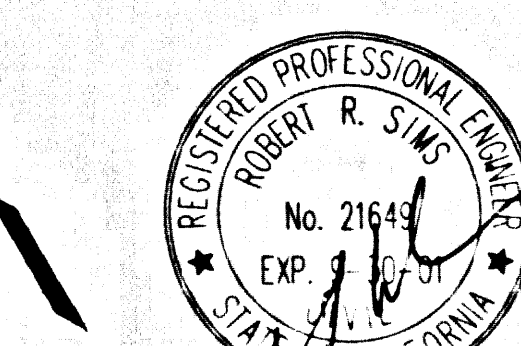
DOUBLE SCALE  
NO L.A. CO. CHARGES  
FOR CONNECTIONS

SEE COUNTY SAN. DISTRICT  
FOR SPECIAL  
CONNECTION CHARGES  
(562) 699-7411 X-2727

55506

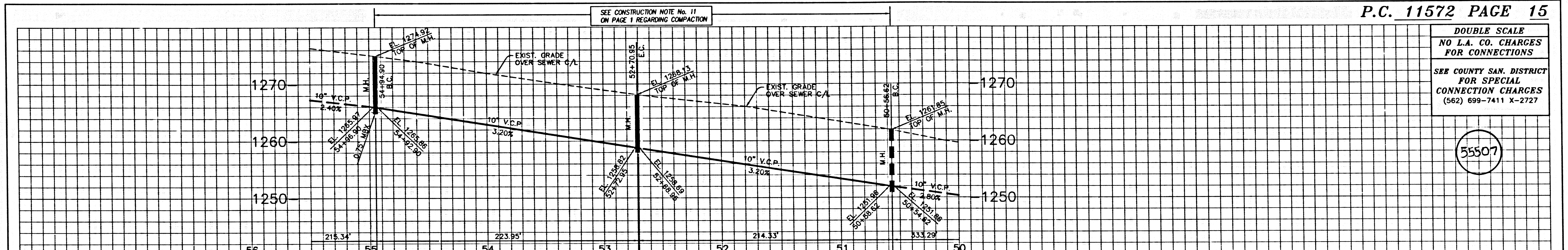


SCALE: VERT. 1" = 8'  
HORIZ. 1" = 40'



REVIEWED BY LAND DEVELOPMENT DIVISION  
BY M.D. [Signature] 3-27-11  
SUBDIVISION PLAN CHECKING SECTION DATE

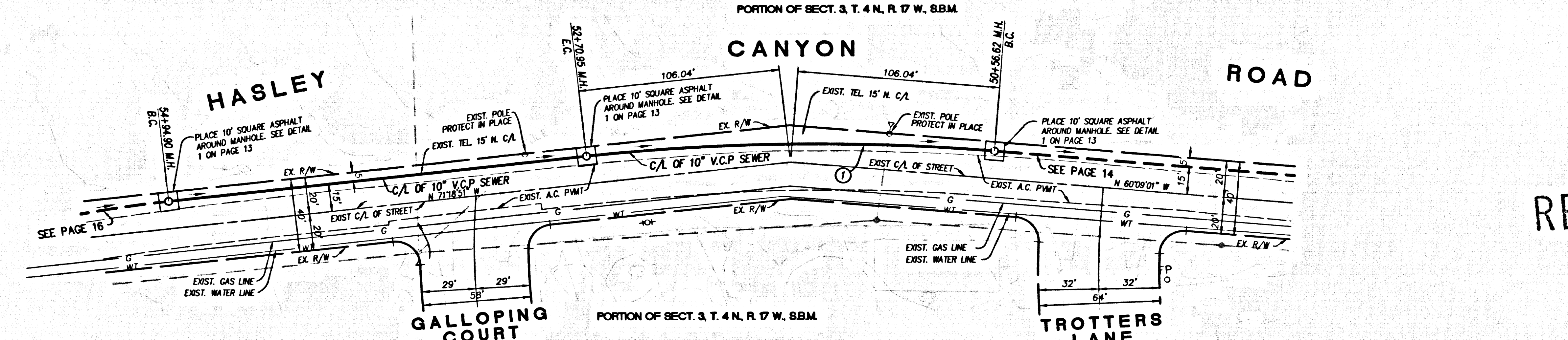
STAFF C.P. 24024 ON .PT



DOUBLE SCALE  
NO L.A. CO. CHARGES  
FOR CONNECTIONS  
SEE COUNTY SAN. DISTRICT  
FOR SPECIAL  
CONNECTION CHARGES  
(562) 699-7411 X-2727

55507

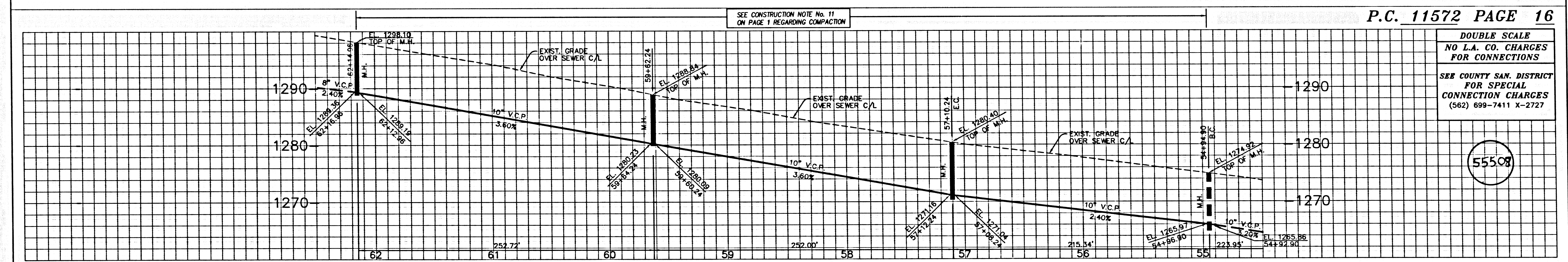
C/A SEWER DATA				
NO.	RADIUS	LENGTH	TANGENT	DELTA
1	1100.00'	214.33'	107.51'	1179°50'



SCALE: VERT: 1"=8'  
HORIZ: 1"=40'

RECORD PLANS

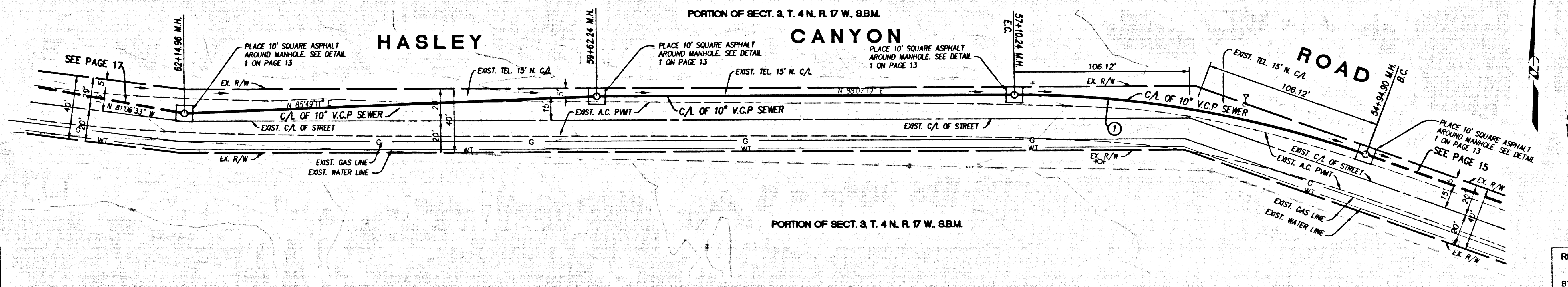
REVIEWED BY LAND DEVELOPMENT DIVISION  
BY M.D. [Signature] 3-27-01  
SUBDIVISION PLAN CHECKING SECTION DATE



DOUBLE SCALE  
NO L.A. CO. CHARGES  
FOR CONNECTIONS  
SEE COUNTY SAN. DISTRICT  
FOR SPECIAL  
CONNECTION CHARGES  
(562) 699-7411 X-2727

55508

C/A SEWER DATA				
NO.	RADIUS	LENGTH	TANGENT	DELTA
1	600.00'	215.34'	108.84'	20°33'50"



SCALE: VERT: 1"=8'  
HORIZ: 1"=40'

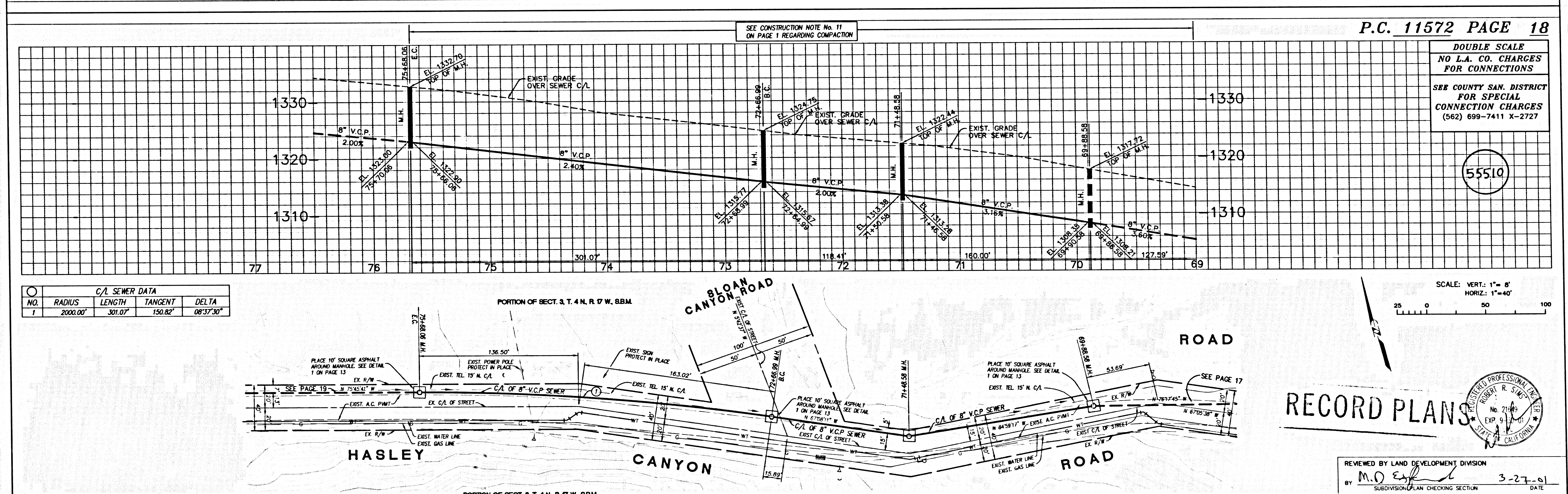
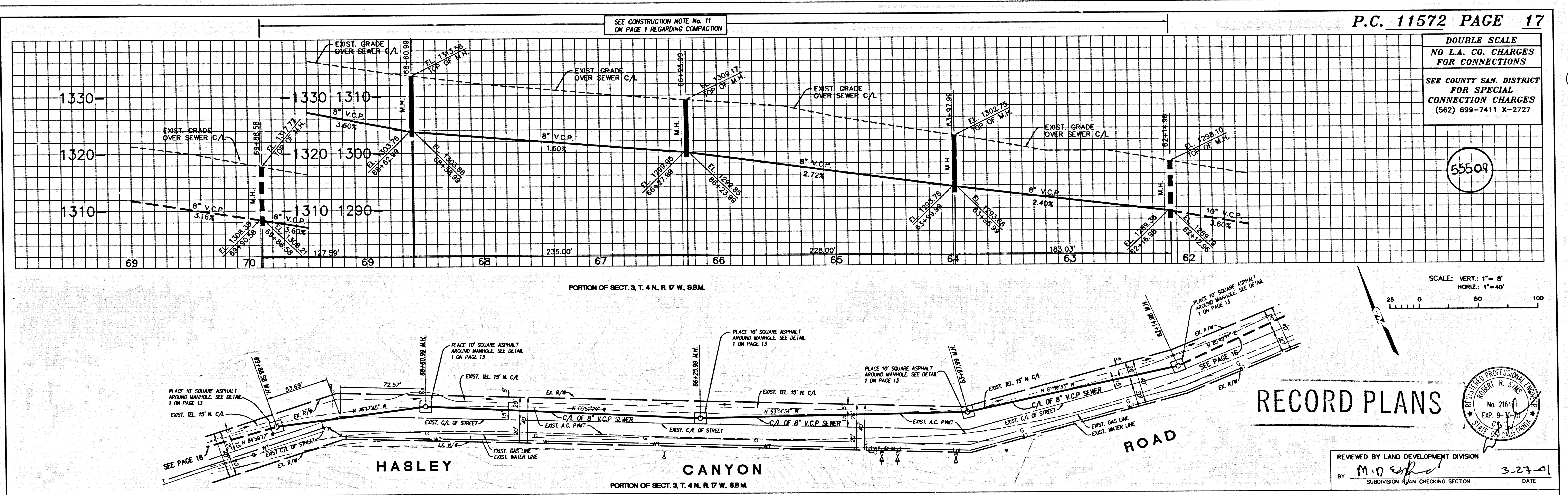
RECORD PLANS

REVIEWED BY LAND DEVELOPMENT DIVISION  
BY M.D. [Signature] 3-27-01  
SUBDIVISION PLAN CHECKING SECTION DATE

8

STAT. C.P. 24624 .01 .PT

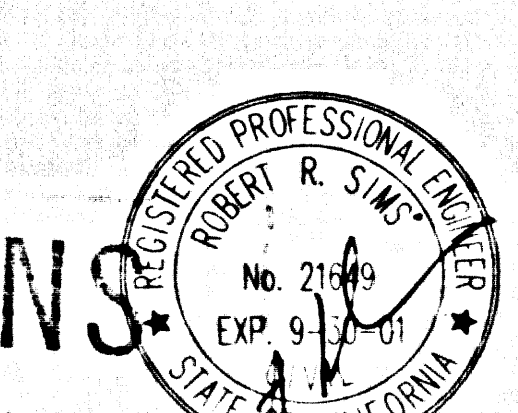


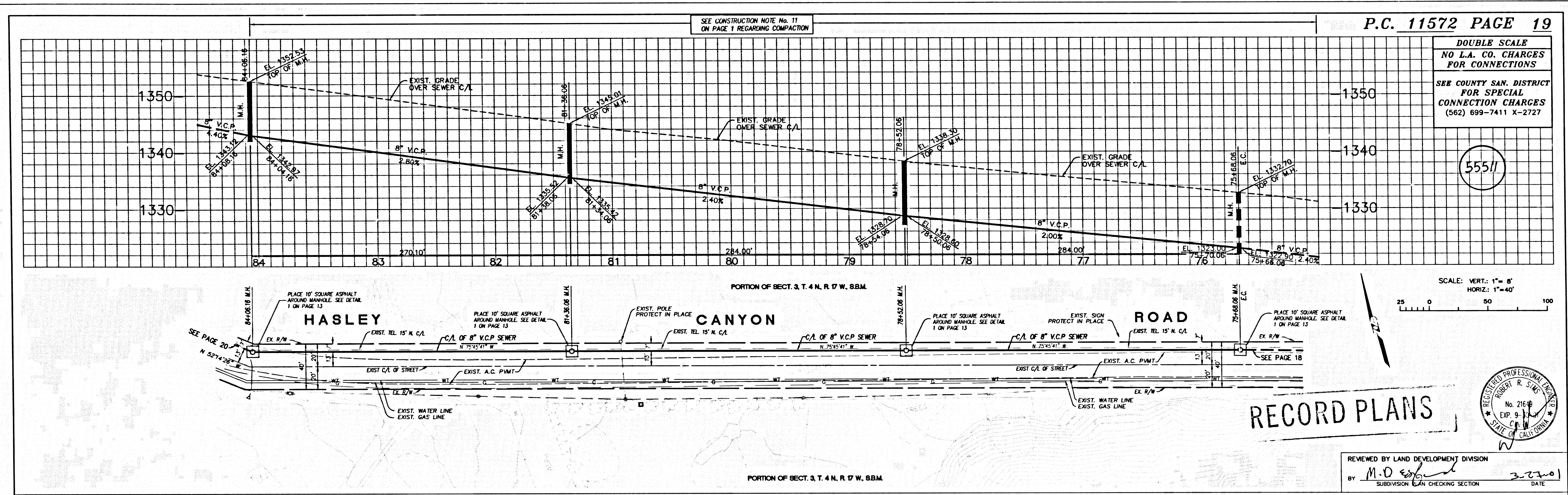


C/A SEWER DATA				
NO.	RADIUS	LENGTH	TANGENT	DELTA
1	2000.00'	301.07'	150.82'	08°37'30"

STAT. C.P. DATA ON PT

RECORD PLANS

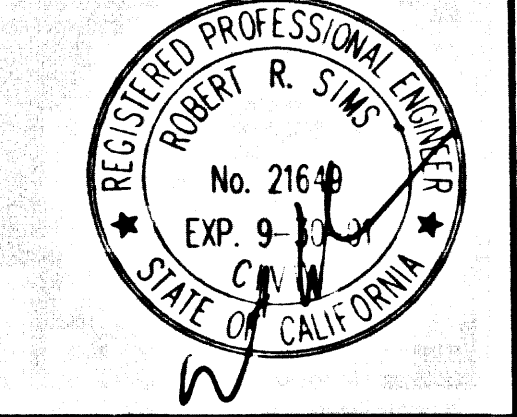




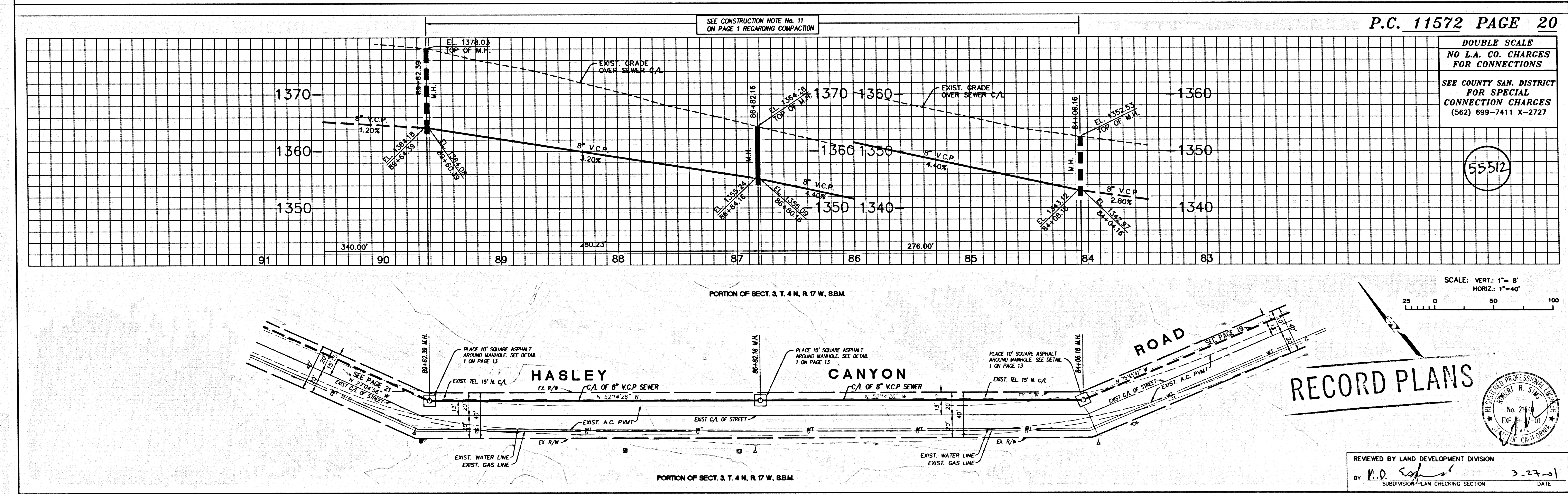
DOUBLE SCALE  
NO L.A. CO. CHARGES  
FOR CONNECTIONS

SEE COUNTY SAN. DISTRICT  
FOR SPECIAL  
CONNECTION CHARGES  
(562) 699-7411 X-2727

55511



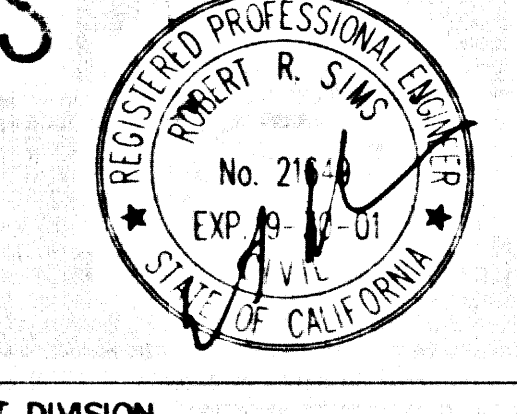
**RECORD PLANS**



DOUBLE SCALE  
NO L.A. CO. CHARGES  
FOR CONNECTIONS

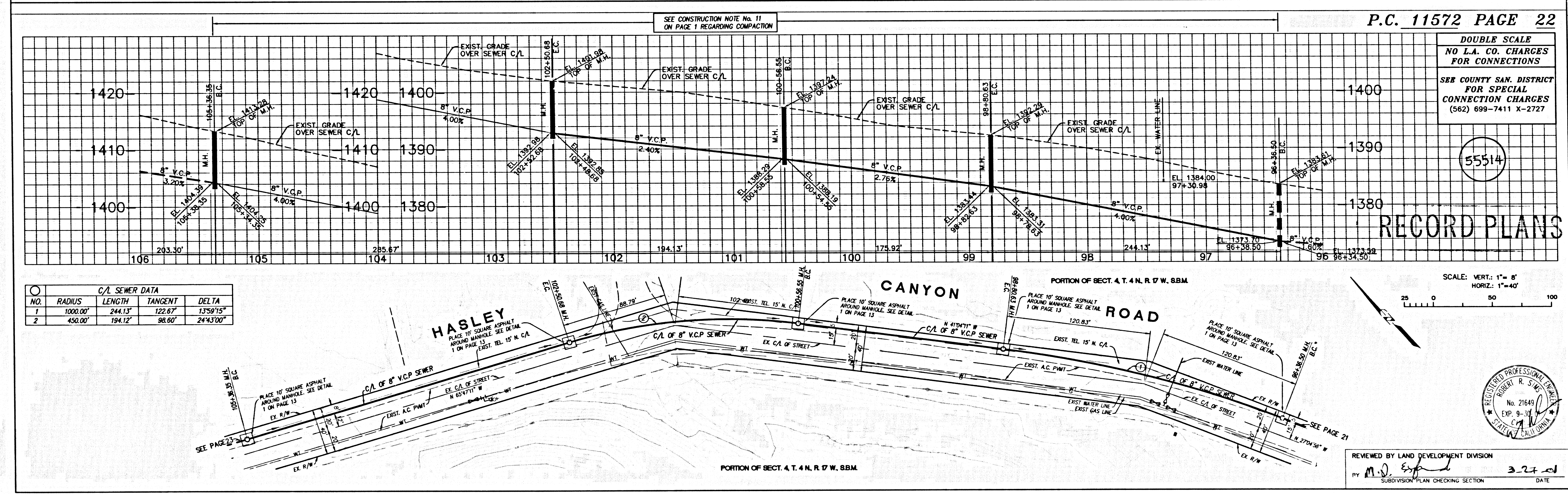
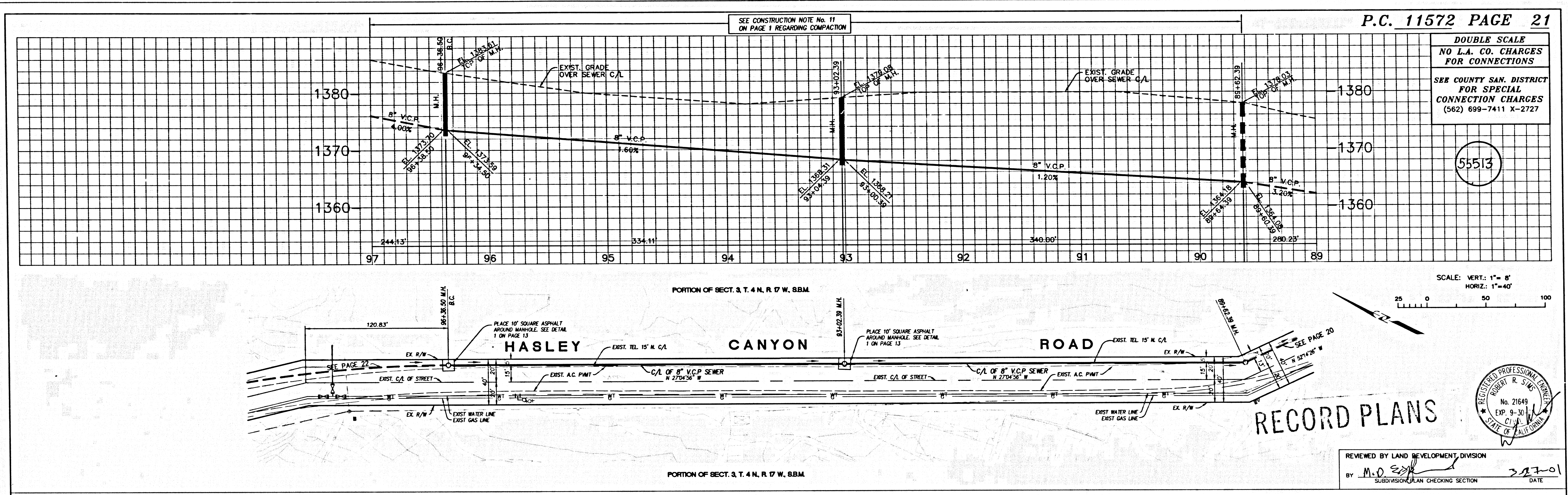
SEE COUNTY SAN. DISTRICT  
FOR SPECIAL  
CONNECTION CHARGES  
(562) 699-7411 X-2727

55512

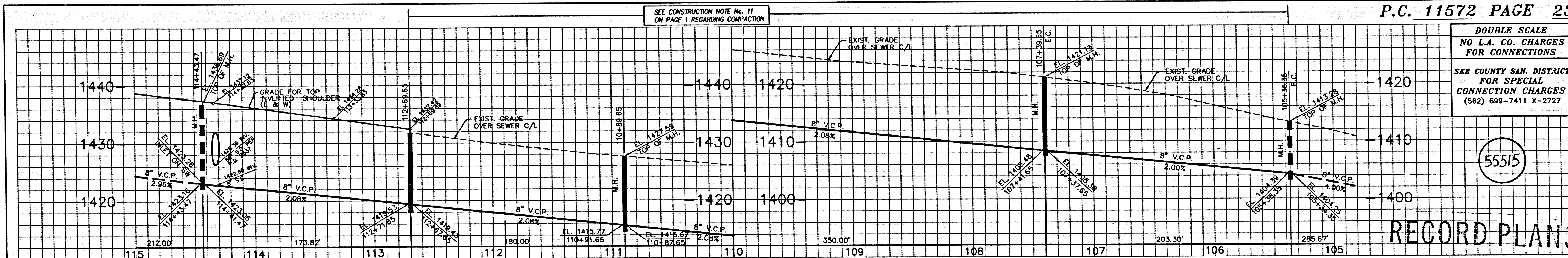


**RECORD PLANS**

STAFF C.P. 24024 .ON .PT



STAFF C.P. 210224 .ON .PT

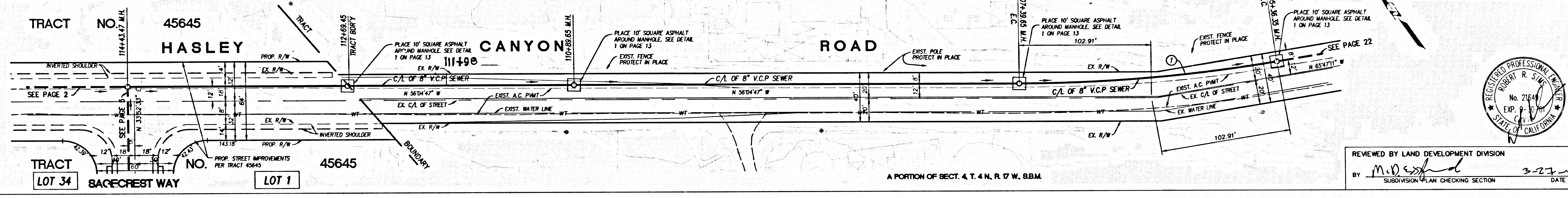


DOUBLE SCALE  
NO L.A. CO. CHARGES  
FOR CONNECTIONS  
SEE COUNTY SAN. DISTRICT  
FOR SPECIAL  
CONNECTION CHARGES  
(562) 699-7411 X-2727

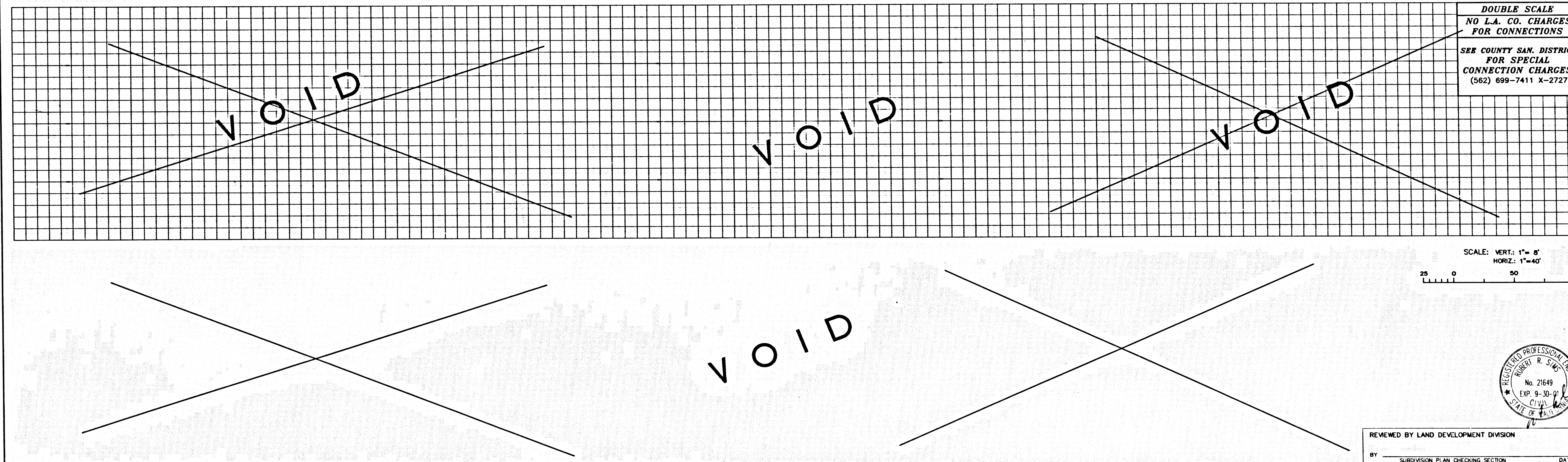
55515

RECORD PLANS

C/L SEWER DATA				
NO.	RADIUS	LENGTH	TANGENT	DELTA
1	1200.00'	203.30'	101.89'	09°42'24"

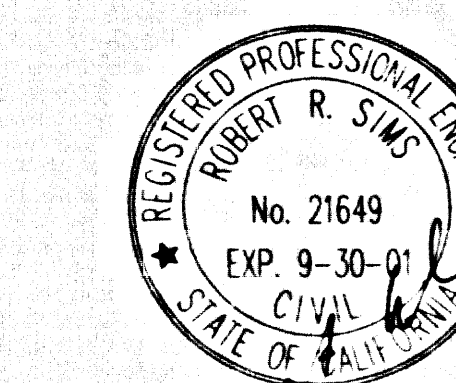


REVIEWED BY LAND DEVELOPMENT DIVISION  
BY *M.D. [Signature]* DATE 3/27/01  
SUBDIVISION PLAN CHECKING SECTION



DOUBLE SCALE  
NO L.A. CO. CHARGES  
FOR CONNECTIONS  
SEE COUNTY SAN. DISTRICT  
FOR SPECIAL  
CONNECTION CHARGES  
(562) 699-7411 X-2727

SCALE: VERT.: 1" = 8'  
HORIZ.: 1" = 40'



REVIEWED BY LAND DEVELOPMENT DIVISION  
BY \_\_\_\_\_ DATE \_\_\_\_\_  
SUBDIVISION PLAN CHECKING SECTION

STAFF C.P. 24024 .ON .PT