

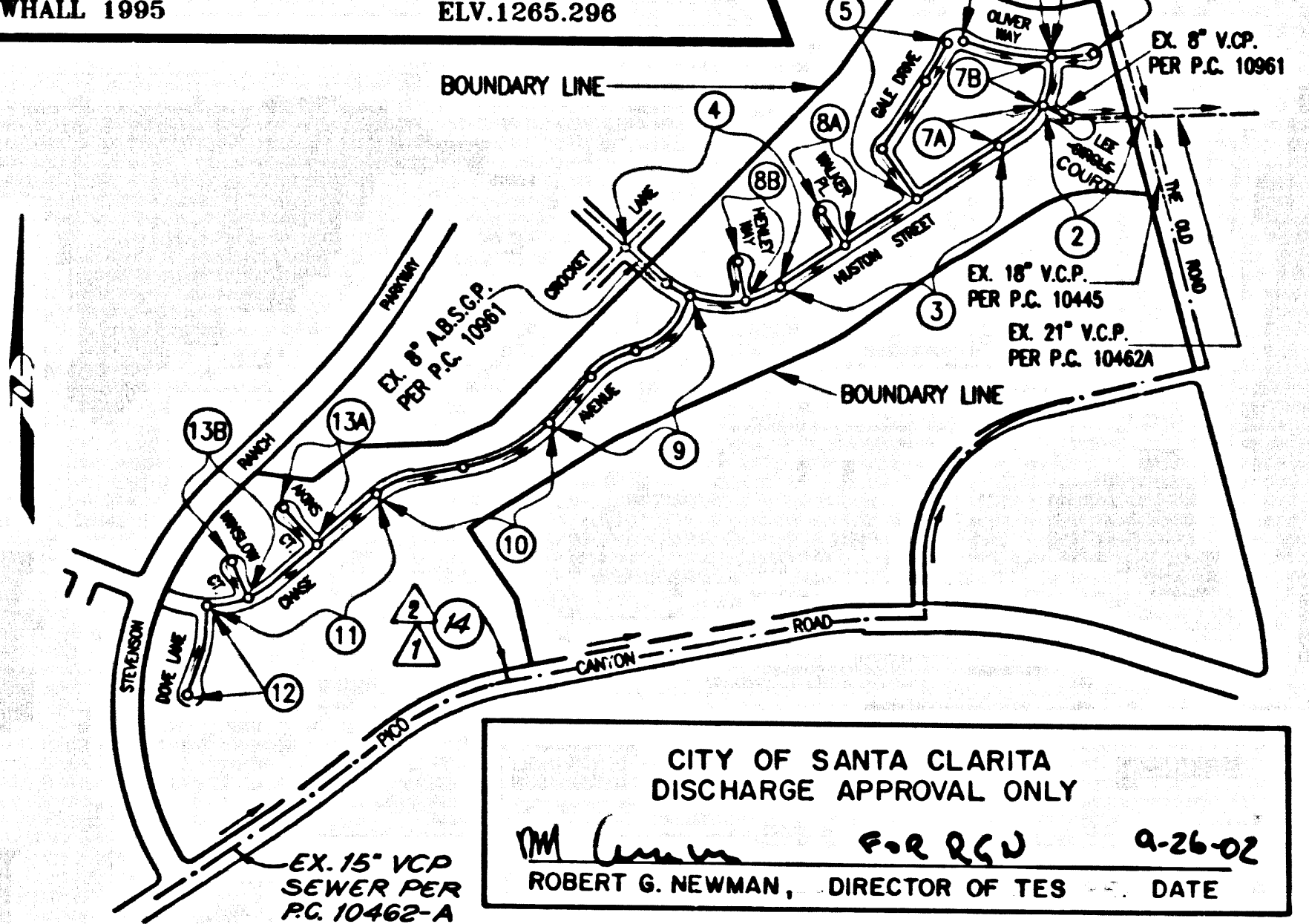
PROFILE, ALIGNMENT AND GRADE OF  
**SANITARY SEWERS**  
TO BE CONSTRUCTED IN  
TRACT NO. 33608-2 PC NO. 11577  
INDEX 1258  
7 SHEETS, 43 PAGES  
COUNTY OF LOS ANGELES, CALIFORNIA

JAMES A. NOYES DIRECTOR OF PUBLIC WORKS  
APPROVED BY LAND DEVELOPMENT DIVISION  
BY *Dennis E. Hunter* 9/9/02  
ASSISTANT DIVISION ENGINEER DATE  
SUBMITTED BY *WJW* 4/2/02  
SUBDIVISION PLAN CHECKING SECTION DATE

APPROVED: COUNTY SANITATION DISTRICT  
OF LOS ANGELES, CALIFORNIA  
JAMES F. STAHL - CHIEF ENGINEER and GENERAL MANAGER  
COUNTY SANITATION DISTRICT NO. 32  
BY *WJW* OFFICE ENGINEER DATE: 4/12/02

PRIVATE ENGINEERS NOTICE TO CONTRACTORS:  
THE EXISTENCE AND LOCATION OF ANY UNDERGROUND UTILITY PIPES OR STRUCTURES SHOWN ON THESE PLANS IS REQUIRED BY A SEARCH OF AVAILABLE RECORDS TO THE BEST OF OUR KNOWLEDGE. THERE ARE NO EXISTING UTILITIES EXCEPT AS SHOWN ON THIS MAP. THE CONTRACTOR IS REQUIRED TO TAKE PRECAUTIONARY MEASURES TO PROTECT THE UTILITY LINES SHOWN AND ANY OTHER LINES NOT OF RECORD OR NOT SHOWN ON THIS DRAWING. PRIOR TO EXCAVATION THE CONTRACTOR SHALL CALL TOLL FREE 1-800-422-4133 TO VERIFY THE UNDERGROUND LOCATION OF GAS AND TELEPHONE LINES. THE CONTRACTOR SHALL ALSO CALL MR. RAY CHAMBERS OF GENERAL TELEPHONE COMPANY AT 1-805-948-4871 SO THAT THEY CAN MARK THE LOCATION OF UNDERGROUND TELEPHONE LINES.  
*WJW* 5/20/01  
R.C.E. NO 21649 DATE

**BENCH MARK**  
L 3026  
RDVM TAG IN S CB 8.2M W/O BCR SW COR  
LYONS AVE. & WOLFEY CYN RD 30.5M & 12.2 S/O  
C/L INT (NR W END C.D).  
NEWHALL 1995 ELV. 1265.296



CITY OF SANTA CLARITA  
DISCHARGE APPROVAL ONLY  
BY *Robert G. Newman* 9-26-02  
ROBERT G. NEWMAN, DIRECTOR OF YES DATE

INDEX MAP - 1258  
TRACT NO. 33608-2  
P.C. 11577  
THOMAS GUIDE PGS. 4640-C1 & 4550-D7  
SCALE: 1" = 600'

NO.	REVISION	REVISED BY	APPROVED BY	DATE
1	DOWNHILL TOP EX. 15' VCP IN PCD	<i>WJW</i>	<i>WJW</i>	12/5/02
2	UPHILL TO L. ADJ. PCD 15'	<i>WJW</i>	<i>WJW</i>	12/5/02
3	REV. LOCATION OF 6" W.L. TO MARK IN PCD SYN. RD.	<i>WJW</i>	<i>WJW</i>	4/4/03

**STORM WATER POLLUTION CONTROL REQUIREMENTS FOR SEWER CONSTRUCTION**

- Eroded sediments and other pollutants must be retained on site and may not be transported from the site via sheet flow, swales, area drains, natural drainage courses, or wind.
- Stockpiles of earth and other construction related materials must be protected from being transported from the site by the forces of wind or water.
- Fuels, oils, solvents, and other toxic materials must be stored in accordance with their listing and are not to contaminate the soil and surface waters. All approved storage containers are to be protected from the weather. Spills must be cleaned up immediately and disposed of in a proper manner. Spills may not be washed into the drainage system.
- Excess or waste concrete may not be washed into the public way or any other drainage system. Provisions shall be made to retain concrete wastes on site until they can be disposed of on solid waste.
- Trash and construction-related solid wastes must be deposited into a covered receptacle to prevent contamination of rainwater and dispersal by wind.
- Sediments and other materials may not be tracked from the site by vehicle traffic. The construction entrance roadway must be established so as to inhibit sediments from being deposited into the public way. Accidental depositions must be swept up immediately and may not be washed down by rain or other means.
- Any slopes with disturbed soils or denuded of vegetation must be stabilized so as to inhibit erosion by wind and water.

- CA001 - DEWATERING OPERATIONS
- CA002 - PAVING OPERATIONS
- CA003 - STRUCTURE CONSTRUCTION AND PAINTING
- CA010 - MATERIAL DELIVERY AND STORAGE
- CA021 - HAZARDOUS WASTE MANAGEMENT
- CA023 - CONCRETE WASTE MANAGEMENT
- CA024 - SANITARY/SEPTIC WASTE MANAGEMENT
- CA031 - VEHICLE AND EQUIPMENT CLEANING
- CA032 - SCHEDULING
- CA033 - PRESERVATION OF EXISTING VEGETATION
- ESC00 - SEEDING AND PLANTING
- ESC01 - MULCHING
- ESC20 - GEOTEXTILES AND MATS
- ESC21 - DUST CONTROLS
- ESC22 - TEMPORARY STREAM CROSSING
- ESC23 - CONSTRUCTION ROAD STABILIZATION
- ESC24 - STABILIZED CONSTRUCTION ENTRANCE
- ESC24 - STORM URAN INLET PROTECTION

STANDARD PLANS:  
THE FOLLOWING LATEST REVISED STANDARD PLANS ON FILE IN THE OFFICE OF THE FOLLOWING DEPARTMENT SHALL APPLY IN THE CONSTRUCTION OF THIS PROJECT.  
LOS ANGELES COUNTY DEPARTMENT OF PUBLIC WORKS  
LEGEND  
MINIMUM PUBLIC SAFETY REQUIREMENTS 2000-0  
BRICK MANHOLE 2003-1  
STANDARD MANHOLE STEP 2015-1  
BEDDING FOR SEWER PIPE 2015-1  
CRADLING AND ENCASUREMENT 2015-2  
WIRE OR FIBER OPTIC CABLES 2015-2  
ALLOWABLE TRENCH WIDTHS 2015-2  
LOCKING MANHOLE FRAME AND COVER 2015-2  
NON PRECAST CONCRETE MANHOLE 2015-2  
BREAK INTO EXISTING MANHOLE 2010-0  
SPECIAL BLOCK LATERALS 2021-1  
EROSION PROTECTION IN STEEP SLOPES 2025-1  
ANCHOR BOLDS 2025-1  
JACKING STEEL CASING FOR SEWER PIPE 2028-1  
CHIMNEYS 2225-2  
\* REFERS TO A.P.W.A. STD. DRAWING NO.

DOUBLE SCALE

LOTS 141 THRU 144 ARE RESTRICTED TO NO CONSTRUCTION OF RESIDENTIAL BUILDING AND WILL NOT BE SERVED BY THIS SEWER.

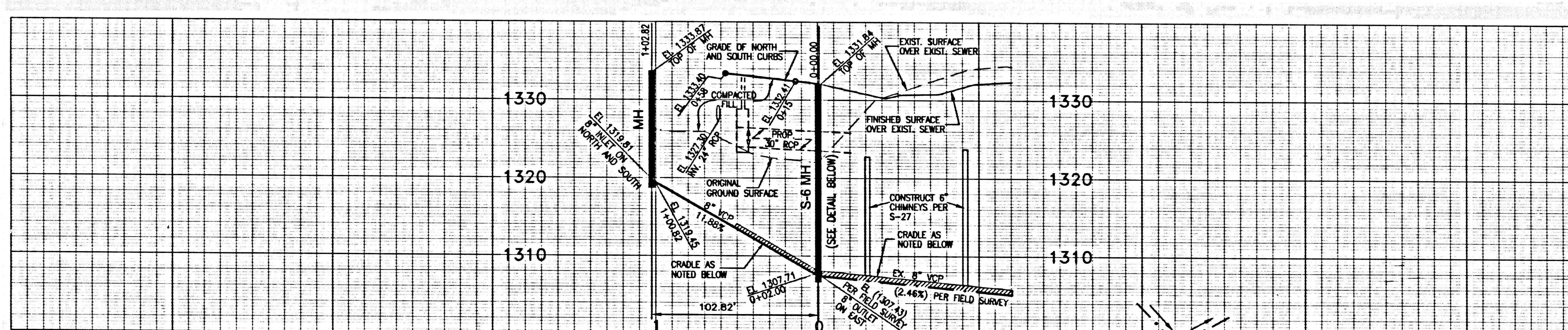
NO CONNECTION FOR THE DISPOSAL OF INDUSTRIAL WASTES SHALL BE MADE TO SEWERS SHOWN ON THESE DRAWINGS UNTIL A PERMIT FOR INDUSTRIAL WASTEWATER DISCHARGE HAS BEEN ISSUED BY THE SANITATION DISTRICTS FOR THE SAID CONNECTION.  
BEFORE BREAKING INTO OR CONSTRUCTION ON A COUNTY SANITATION DISTRICT SEWER AND PRIOR TO FINAL ACCEPTANCE OF THE PROJECT A SANITATION DISTRICT INSPECTOR SHALL BE NOTIFIED BY PHONE AT (408) 266-4683 SO THAT REQUIRED INSPECTIONS CAN BE MADE.

**GENERAL NOTES:**

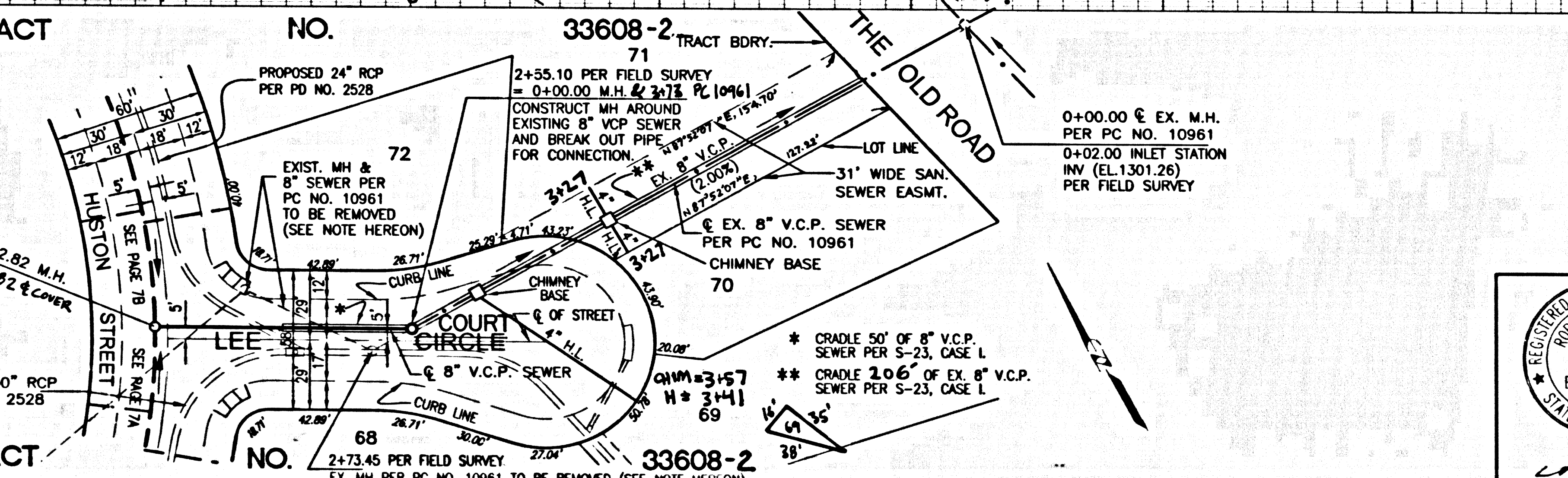
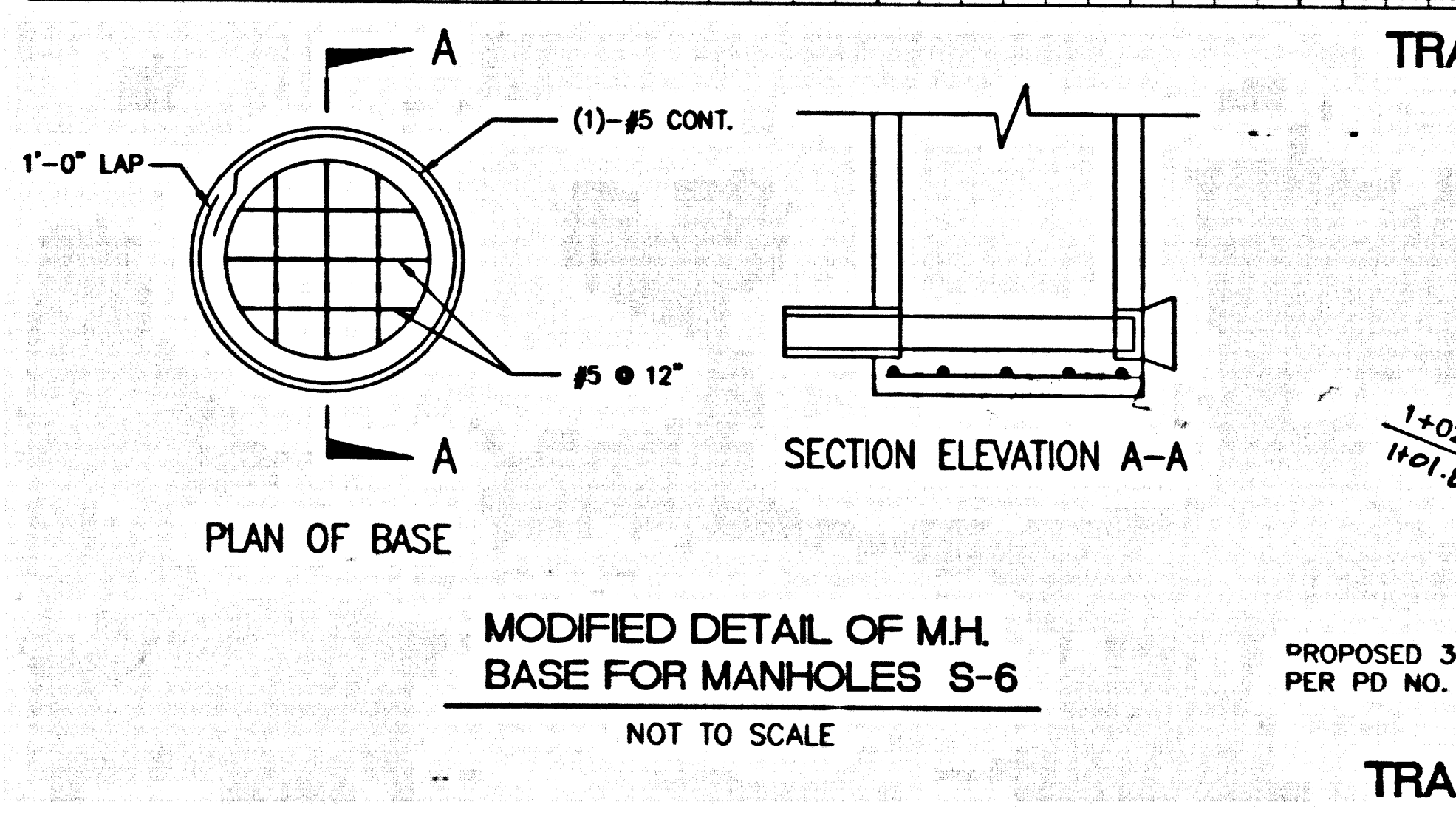
- A sewer construction permit shall be obtained and a fee paid for construction inspection and record plans to the Department of Public Works at the Permit Counter, 900 South Fremont Avenue, 8th Floor, Alhambra, at least 72 hours prior to starting work under this permit. Copies of all other required permits, such as Road Excavation, Caltrans, etc., must be filed with the permit application.
- Prior to issuance of any permit, the contractor shall file a permit for excavations and trenches from the State of California Division of Industrial Safety, and a Certificate of Worker's Compensation Insurance with the Department of Public Works named as the Certificate holder to be notified 30 days prior to commencement of policy.
- If work is done in a State Highway, a permit must be obtained from the State of California Division of Highways, 120 South Spring Street, Los Angeles, California.
- When work is within a contract city, the contractor must contact the Director of Public Works of that city to determine the location to pay the inspection fee.
- The contractor shall contact the district office listed on the "Application for Construction Permit" to arrange for an acceptable construction start date.
- Approval of this plan by the County of Los Angeles does not constitute a representation as to accuracy of the location of or the existence or non-existence of any underground utility pipe or structure within the limits of this project. This note applies to all pages.
- All work shall be in accordance with the latest approved edition of the "Standard Specifications for Public Works Construction, including supplements and the latest Special Provisions for the Construction of Sanitary Sewers and shall be prosecuted only in the presence of the Department of Public Works." The contractor's attention is directed to Section 7-10.4.1 of the Standard Specifications for Public Works Construction in regard to safety orders and shall conform to the "Minimum Public Safety Requirements" as shown on Los Angeles Department of Public Works Standard S-2.
- Elevations are in feet above U.S.C. & G.S. sea level datum of 1929.
- No revisions shall be made in these plans without the approval of the Director of Public Works.
- No representative of the Department of Public Works will survey or lay out any portion of the work.
- Grades to which this improvement is to be constructed are shown on plans and profiles. Grade points for top of curbs, centerline of streets, or centerline of alleys, are shown by circles on profiles at all points between designated points. The grade shall be established so as to conform to a straight line drawn between said designated points.
- The private engineer shall furnish the Department of Public Works with grade sheets and staking for all house laterals and "T" or "Y" branches and shall provide stakes for them at their proper locations with staking plenty marked. All house laterals shall be constructed in a straight alignment at right angles from the main line sewer except as shown on the plans. House laterals from chimneys shall not have an angle of less than 45 degrees with the M.L. sewer. Any change in alignment shall be requested in writing by the private engineer.
- The private engineer shall furnish the house lateral depth at the property line below the top of curb elevation for each house lateral on the grade sheet.
- The engineer shall revise this plan to show the re-built location of house laterals before the sewer is accepted for public use and the sewer security can be released.

**CONSTRUCTION NOTES**

- Provide survey stakes on the property line or property lines produced at right angles to the sewer line at the centerline of each manhole.
- Verified clay pipe joints shall be type "D" or "G" per standard specifications section 208-2.
- If a power pole is within three feet of the sewer, the sewer shall be encased per standard plan S-23, case II, two feet on each side from the point of interference.
- All joints between cast iron pipe and vitrified clay shall be made with a rubber seal joint, type "D" (with bushing if necessary) per standard specifications section 208-2.
- House laterals to be constructed with inverts at the property line 8 feet below curb grade except as noted.
- Wye or tee branches may be used for connections to the mainline sewers except as noted.
- If during the course of construction, it is determined that there is less than four feet of cover over the top of a manhole or house lateral V.C.P. sewer which is not indicated on the plans, the pipe shall be encased per standard plan S-23, case I, unless otherwise approved by the Director of Public Works.
- All structures shall be either brick sewer manholes per standard plan S-3 or precast concrete sewer manholes per standard plan S-36, or reinforced precast concrete manhole per standard plan S-6, except as noted.
- Rearface of trenches within paved areas to meet Los Angeles County Public Works or California State Highway requirements in accordance with the permit.
- Full compliance with section 306-1.3.4. of the standard specification will be required for backfill in street certification of backfill composition and sand equivalents by a qualified civil engineer shall be provided by the permittee prior to the issuance of a certificate of partial acceptance.
- All backfill and fill outside of the street right of way shall be compacted to 90% of the maximum density as determined by ASTM soil compaction test D 1557-78 method "D" unless otherwise specified. This shall be certified by a qualified civil engineer. The certification shall be submitted to the Construction Division of the Department of Public Works prior to the acceptance of the work by the county.
- Manhole tops unless otherwise noted shall be six inches above finished grade.
- Sewers to be tested for leakage per section 306-1.4 of the standard specifications and special provisions.



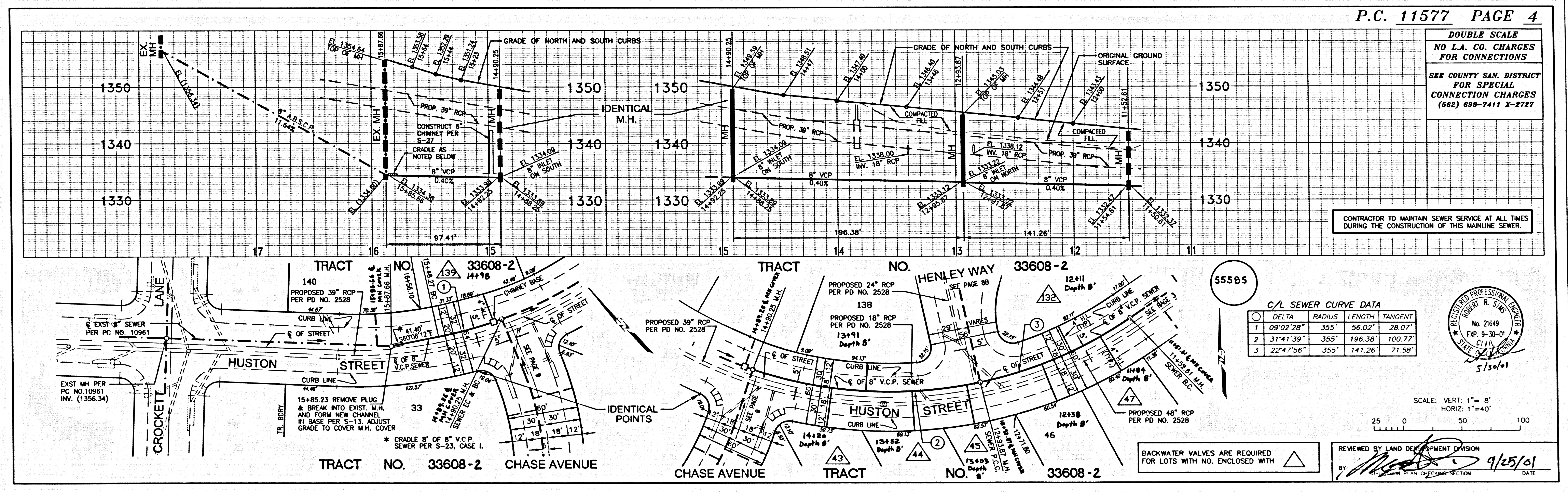
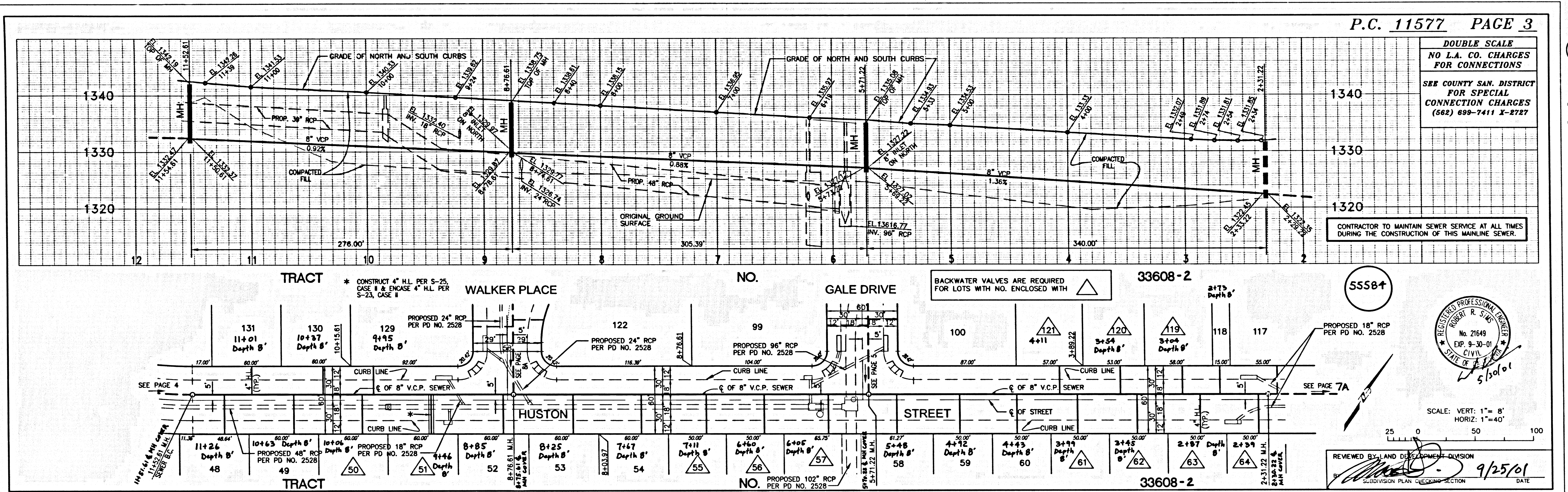
DOUBLE SCALE  
NO L.A. CO. CHARGES FOR CONNECTIONS  
SEE COUNTY SAN. DISTRICT FOR SPECIAL CONNECTION CHARGES (562) 699-7411 X-2787  
**NOTICE TO CONTRACTOR**  
ABANDON 1750' OF EXIST. SEWER PER STD. SPEC. 306-5 SALVAGABLE M.H. FRAMES AND COVERS SHALL BE DELIVERED BY CONTRACTOR TO LOS ANGELES COUNTY NORTH SEWER MAINTENANCE YARD AT 45712 N. DIVISION ST. LANCASTER CA 93534-6042  
CONTRACTOR TO MAINTAIN SEWER SERVICE AT ALL TIMES DURING THE CONSTRUCTION OF THIS MAINLINE SEWER.



SCALE: VERT: 1" = 8'  
HORIZ: 1" = 40'  
25 0 50 100  
55583

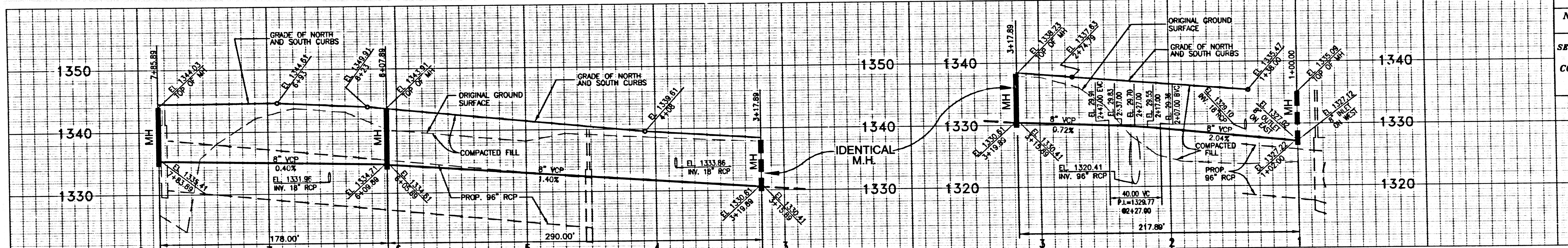
**SANITARY SEWER PLANS IN**  
TRACT NO. 33608-2 P.C. NO. 11577  
REVIEWED BY LAND DEVELOPMENT DIVISION  
BY *WJW* 9/25/01  
SUBDIVISION PLAN CHECKING SECTION DATE  
COUNTY OF LOS ANGELES DEPARTMENT OF PUBLIC WORKS  
**LDC LAND DESIGN CONSULTANTS, INC.**  
Land Planning, Civil Engineering, Surveying & Environmental Services  
225 South Lake Avenue, Suite 600  
Pasadena, Ca 91101  
(626) 578-7000  
97001-004 PROJECT NO.

TRACT NO. 33608-2 P.C. 11577

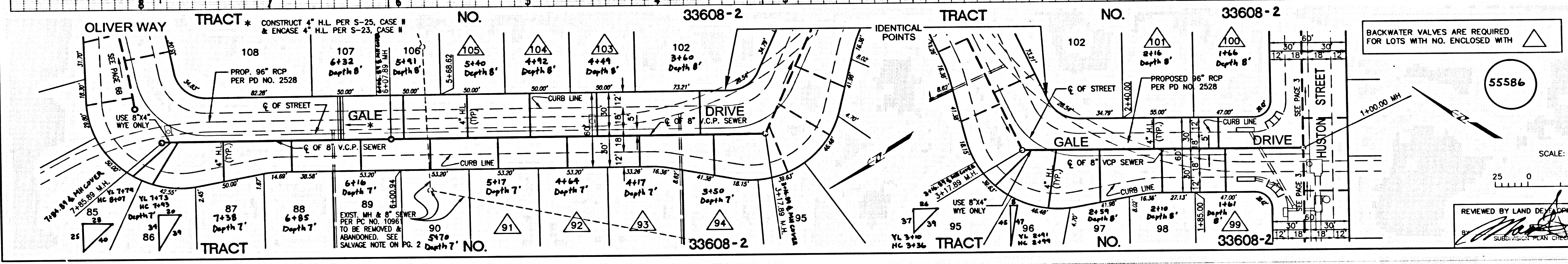


TRACT NO. 33608-2 ON PT. 5

VARDIA'S 2000-04 LENOVA 11/11/01 TRACT VES. SHEET 15.5 (12) 07/20/01 07/17/00 RLB

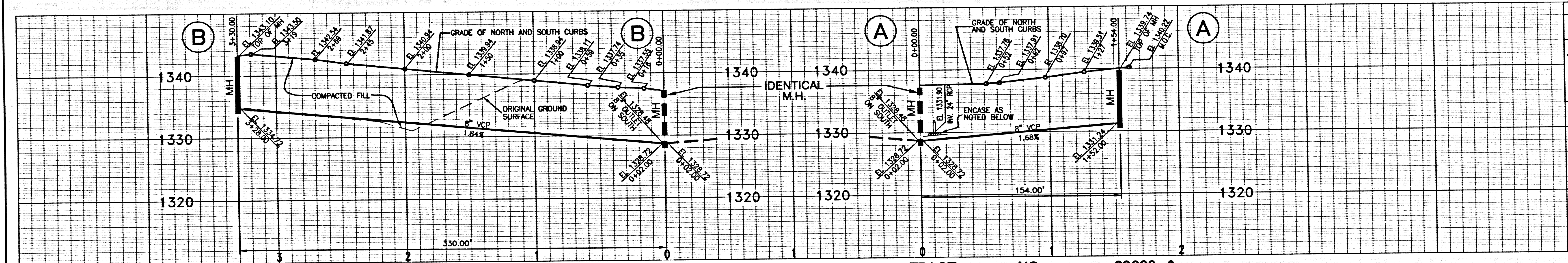


DOUBLE SCALE  
NO L.A. CO. CHARGES  
FOR CONNECTIONS  
SEE COUNTY SAN. DISTRICT  
FOR SPECIAL  
CONNECTION CHARGES  
(562) 699-7411 X-2727

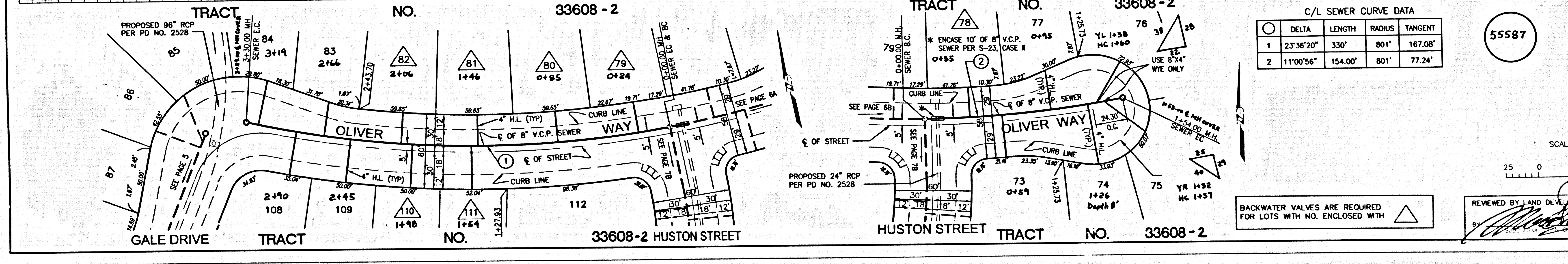


SCALE: VERT: 1"=8'  
HORIZ: 1"=40'

REVIEWED BY LAND DEVELOPMENT DIVISION  
DATE 9/25/01



DOUBLE SCALE  
NO L.A. CO. CHARGES  
FOR CONNECTIONS  
SEE COUNTY SAN. DISTRICT  
FOR SPECIAL  
CONNECTION CHARGES  
(562) 699-7411 X-2727



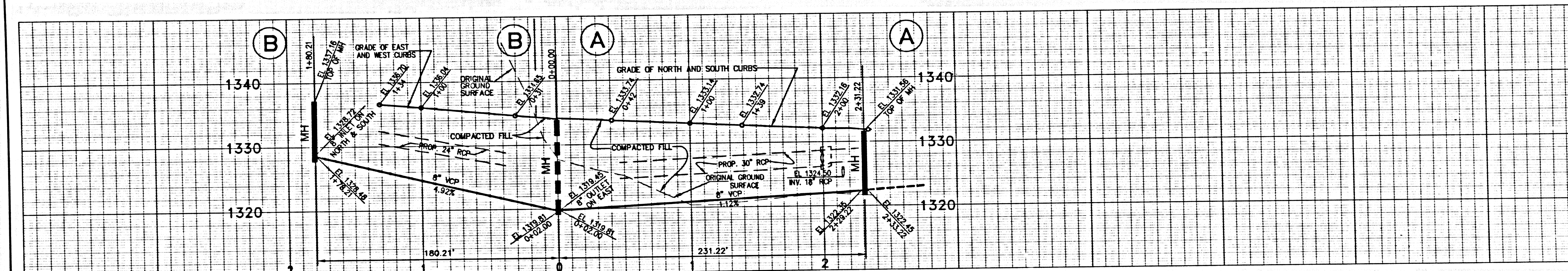
C/L SEWER CURVE DATA

DELTA	LENGTH	RADIUS	TANGENT
1	23°36'20"	330'	801'
2	11°00'56"	154.00'	801'

SCALE: VERT: 1"=8'  
HORIZ: 1"=40'

REVIEWED BY LAND DEVELOPMENT DIVISION  
DATE 9/25/01

3 17211.C.95.80633.ON.PT

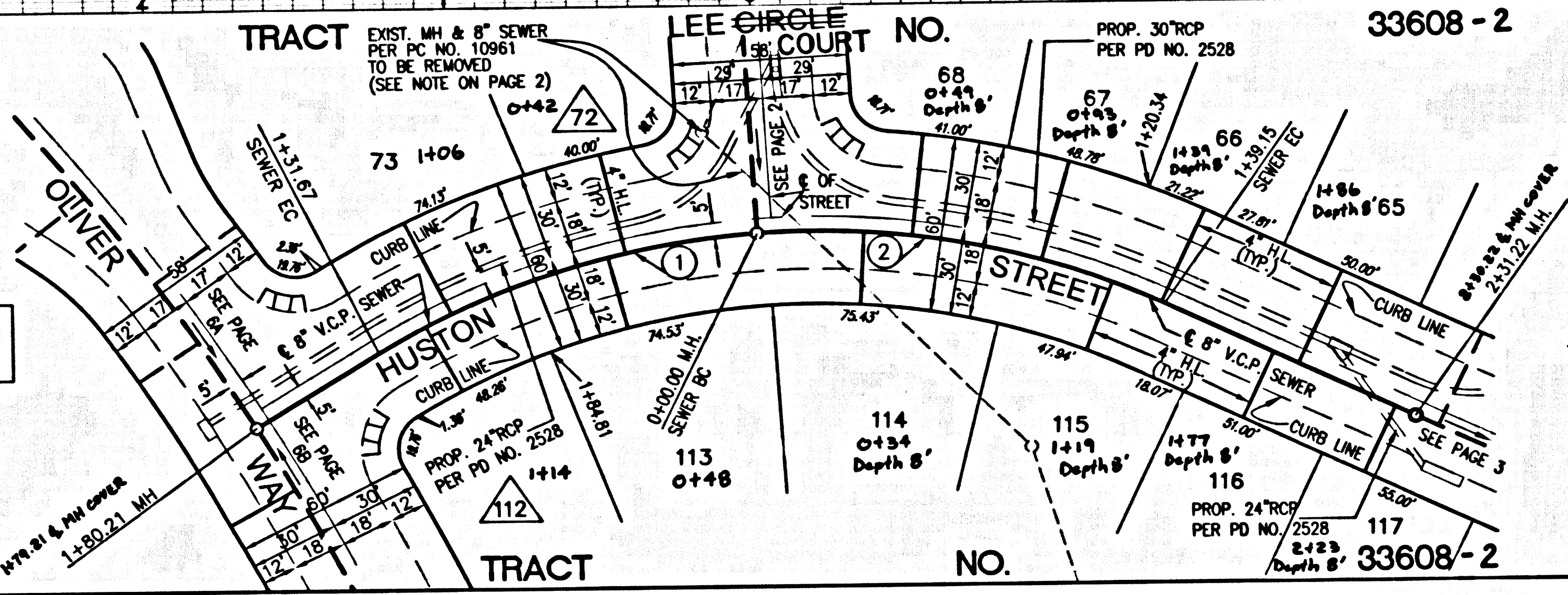


DOUBLE SCALE  
NO L.A. CO. CHARGES  
FOR CONNECTIONS  
SEE COUNTY SAN. DISTRICT  
FOR SPECIAL  
CONNECTION CHARGES  
(562) 699-7411 X-2727

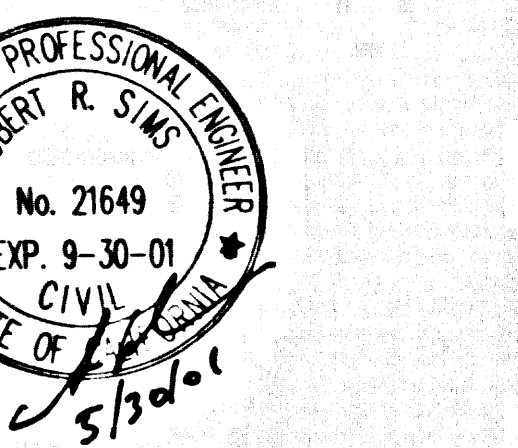
C/L SEWER CURVE DATA

DELTA	LENGTH	RADIUS	TANGENT
1	27'47.16"	131.92'	272.00'
2	29'18.39"	139.15'	272.00'

BACKWATER VALVES ARE REQUIRED  
FOR LOTS WITH NO. ENCLOSED WITH

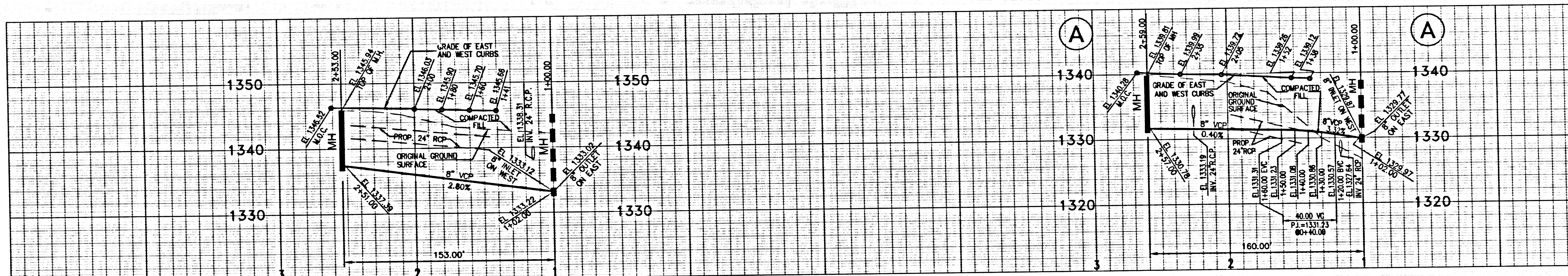


55588



SCALE: VERT: 1"=8'  
HORIZ: 1"=40'

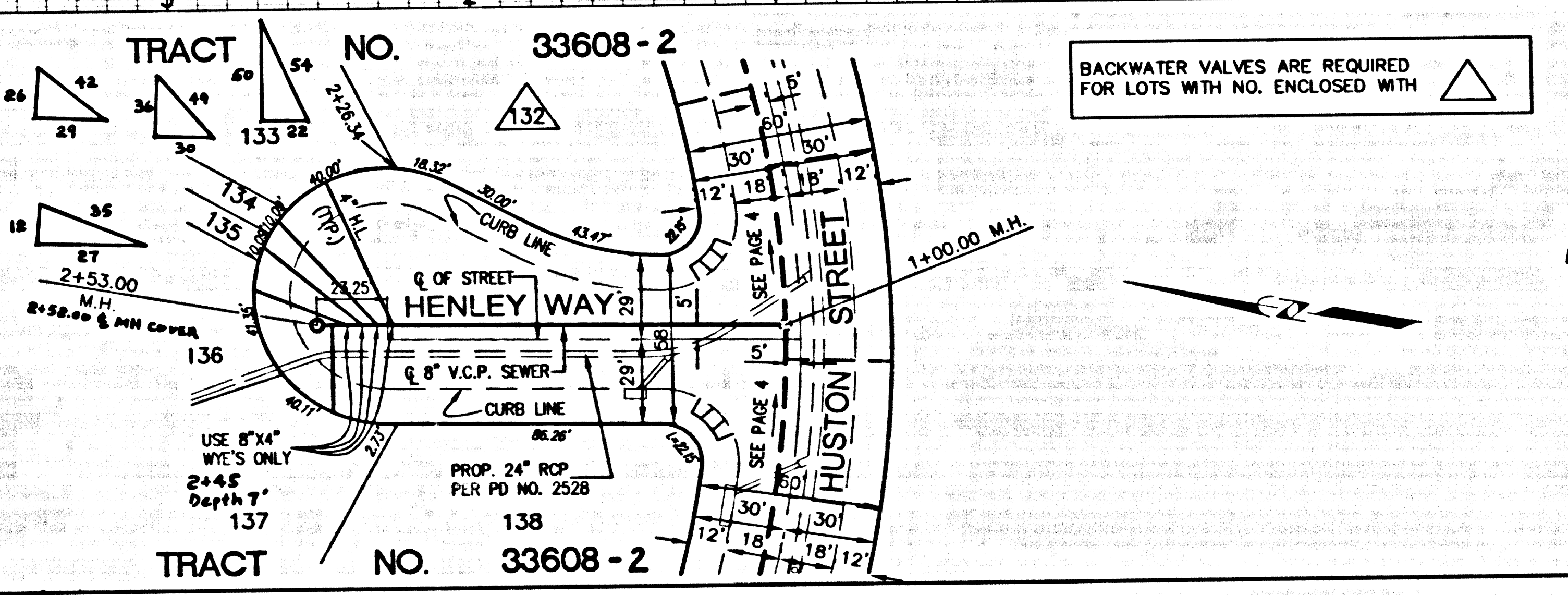
REVIEWED BY LAND DEVELOPMENT DIVISION  
9/25/01  
DATE



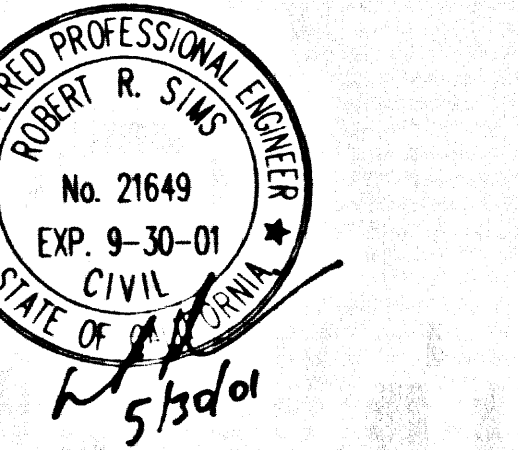
DOUBLE SCALE  
NO L.A. CO. CHARGES  
FOR CONNECTIONS  
SEE COUNTY SAN. DISTRICT  
FOR SPECIAL  
CONNECTION CHARGES  
(562) 699-7411 X-2727

- LOT 133 YR 2+19 Depth 7' HC 2+35
- LOT 134 YR 2+22 Depth 7' HC 2+52
- LOT 135 YR 2+30 Depth 7' HC 2+59
- LOT 136 YR 2+47 Depth 7' HC 2+74

BACKWATER VALVES ARE REQUIRED  
FOR LOTS WITH NO. ENCLOSED WITH



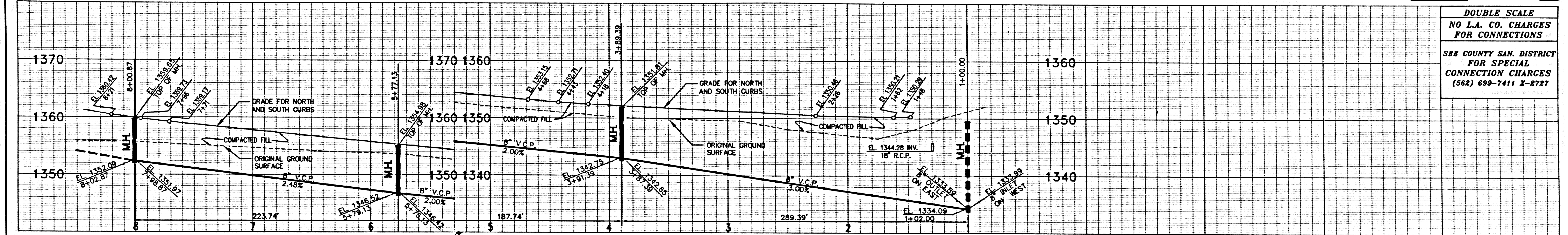
55589



SCALE: VERT: 1"=8'  
HORIZ: 1"=40'

REVIEWED BY LAND DEVELOPMENT DIVISION  
9/25/01  
DATE

4 TRACT C.9580833.ON.PT

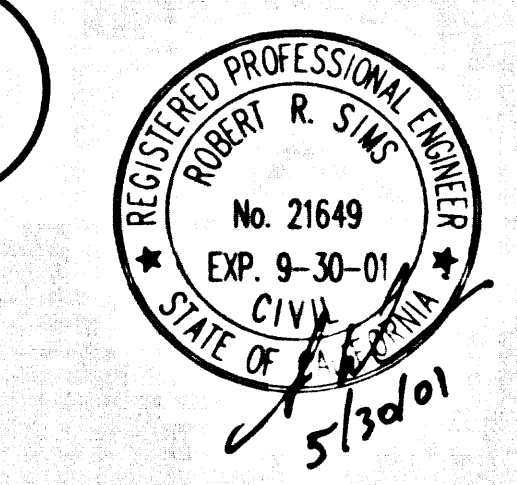


DOUBLE SCALE  
NO L.A. CO. CHARGES  
FOR CONNECTIONS  
SEE COUNTY SAN. DISTRICT  
FOR SPECIAL  
CONNECTION CHARGES  
(562) 699-7411 X-2727

C/L SEWER CURVE DATA

DELTA	RADIUS	LENGTH	TANGENT
1 3°18'55"	581.00'	33.62'	16.81'
2 35°16'04"	305.00'	187.74'	96.95'
3 56°30'37"	245.00'	241.64'	131.67'

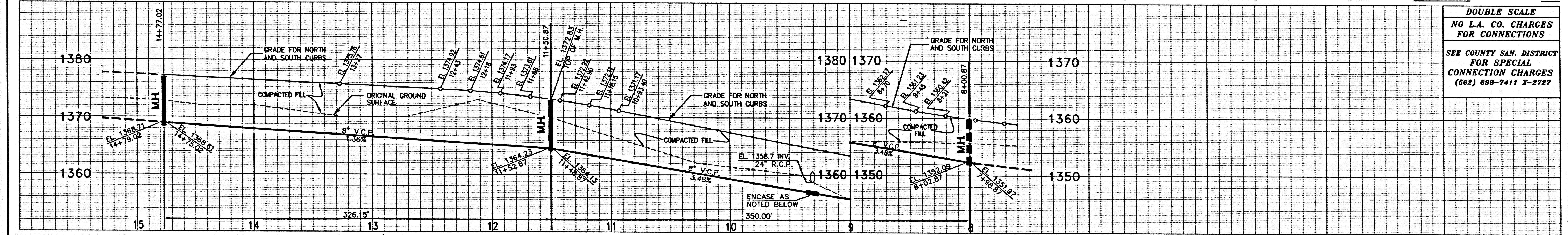
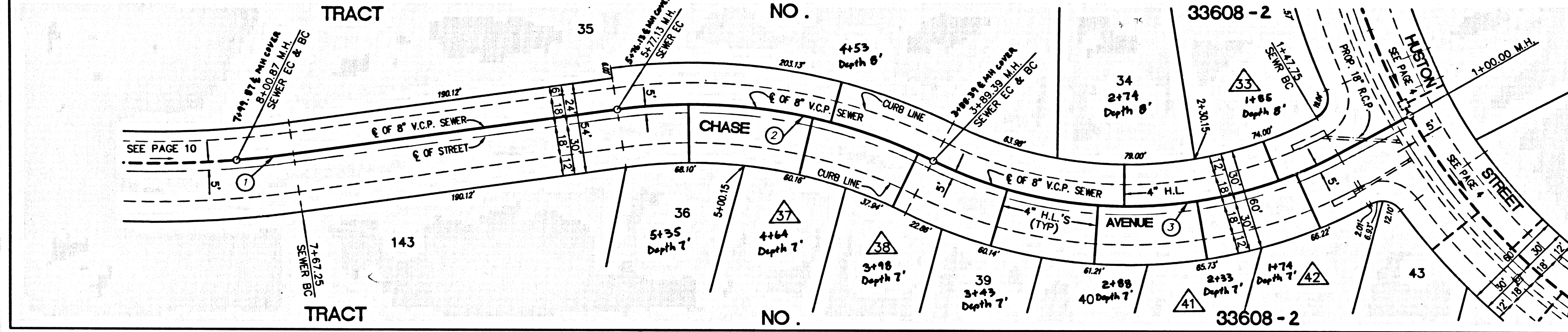
55590



BACKWATER VALVES MAY BE REQUIRED  
FOR LOT WITH NO. ENCLOSED WITH

SCALE: VERT: 1"=8'  
HORIZ: 1"=40'

REVIEWED BY: LAND DEVELOPMENT DIVISION  
DATE: 9/25/01

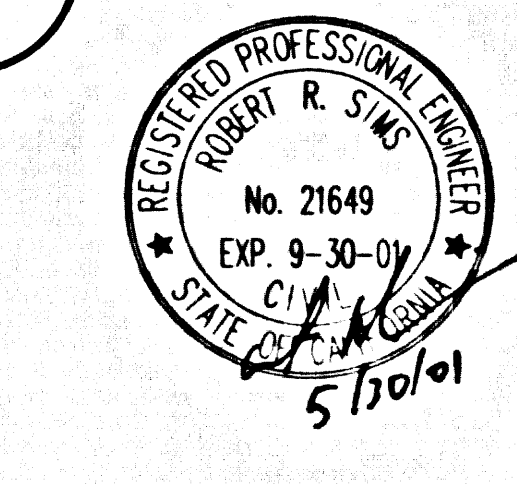


DOUBLE SCALE  
NO L.A. CO. CHARGES  
FOR CONNECTIONS  
SEE COUNTY SAN. DISTRICT  
FOR SPECIAL  
CONNECTION CHARGES  
(562) 699-7411 X-2727

C/L SEWER CURVE DATA

DELTA	RADIUS	LENGTH	TANGENT
1 30°32'02"	281.00'	149.75'	76.70'
2 34°30'56"	581.00'	350.00'	180.49'

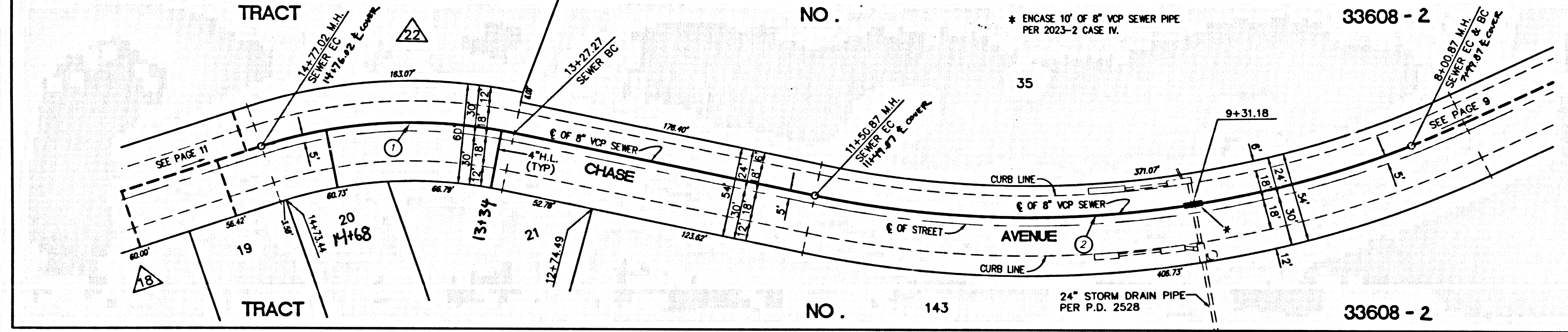
55591



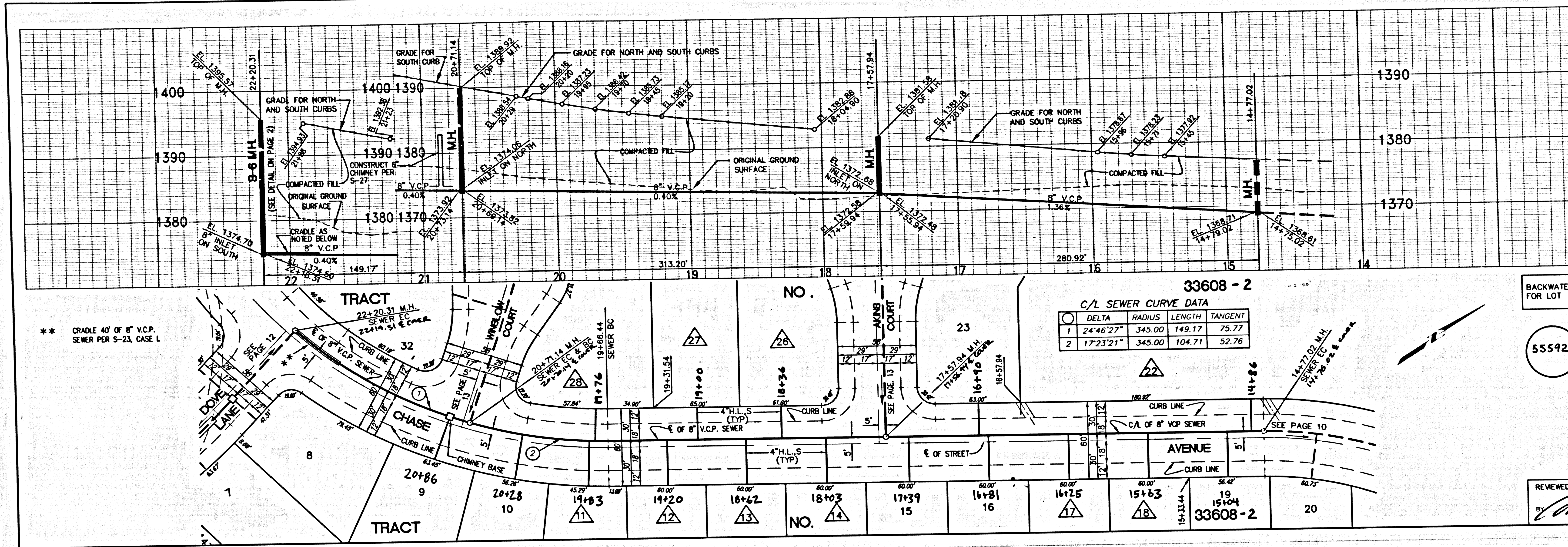
BACKWATER VALVES MAY BE REQUIRED  
FOR LOT WITH NO. ENCLOSED WITH

SCALE: VERT: 1"=8'  
HORIZ: 1"=40'

REVIEWED BY: LAND DEVELOPMENT DIVISION  
DATE: 9/25/01



TRACT NO. 33608-2 ON PT



DOUBLE SCALE  
NO L.A. CO. CHARGES  
FOR CONNECTIONS  
SEE COUNTY SAN. DISTRICT  
FOR SPECIAL  
CONNECTION CHARGES  
(562) 699-7411 X-2727

\*\* GRADE 40' OF 8" V.C.P.  
SEWER PER S-23, CASE 1

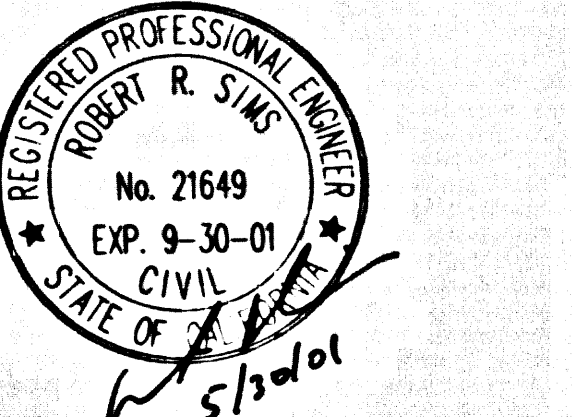
33608-2

C/L SEWER CURVE DATA

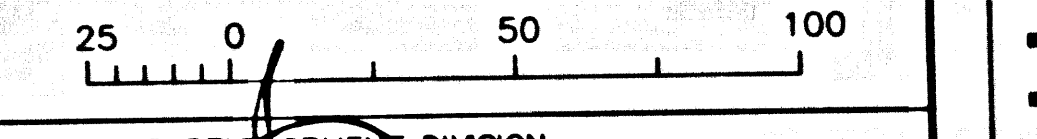
DELTA	RADIUS	LENGTH	TANGENT
1 24°46'27"	345.00	149.17	75.77
2 17°23'21"	345.00	104.71	52.76

BACKWATER VALVES MAY BE REQUIRED  
FOR LOT WITH NO. ENCLOSED WITH

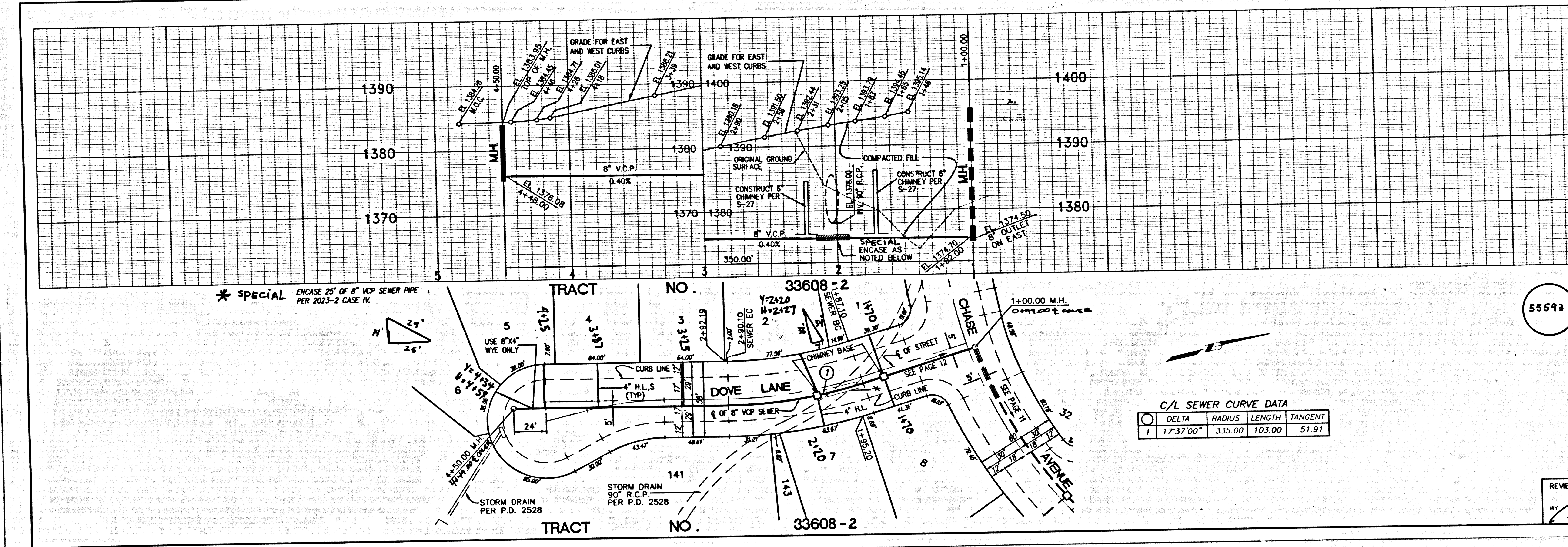
55592



SCALE: VERT. 1"=8'  
HORIZ. 1"=40'



REVIEWED BY LAND DEVELOPMENT DIVISION  
DATE 9/25/01



DOUBLE SCALE  
NO L.A. CO. CHARGES  
FOR CONNECTIONS  
SEE COUNTY SAN. DISTRICT  
FOR SPECIAL  
CONNECTION CHARGES  
(562) 699-7411 X-2727

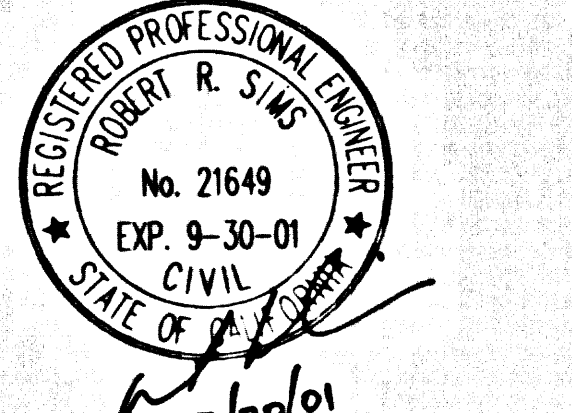
\* SPECIAL ENCASE 25' OF 8" V.C.P. SEWER PIPE  
PER 2023-2 CASE 14

33608-2

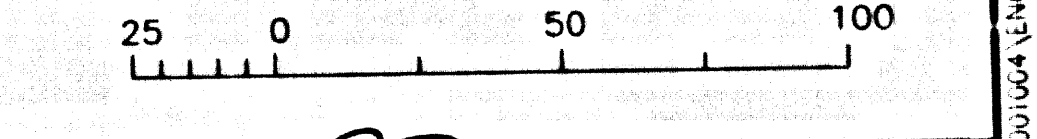
C/L SEWER CURVE DATA

DELTA	RADIUS	LENGTH	TANGENT
1 17°37'00"	335.00	103.00	51.91

55593



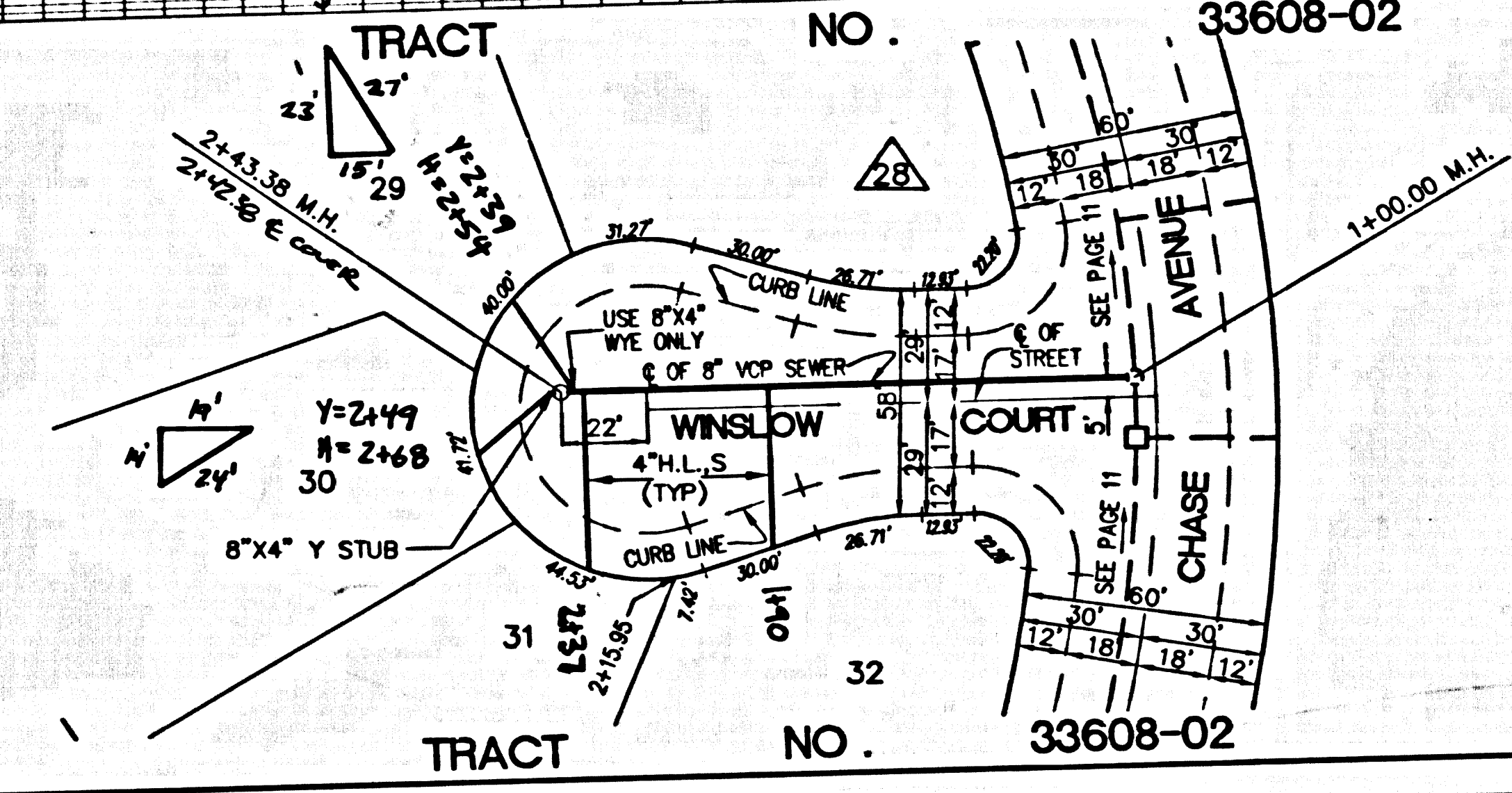
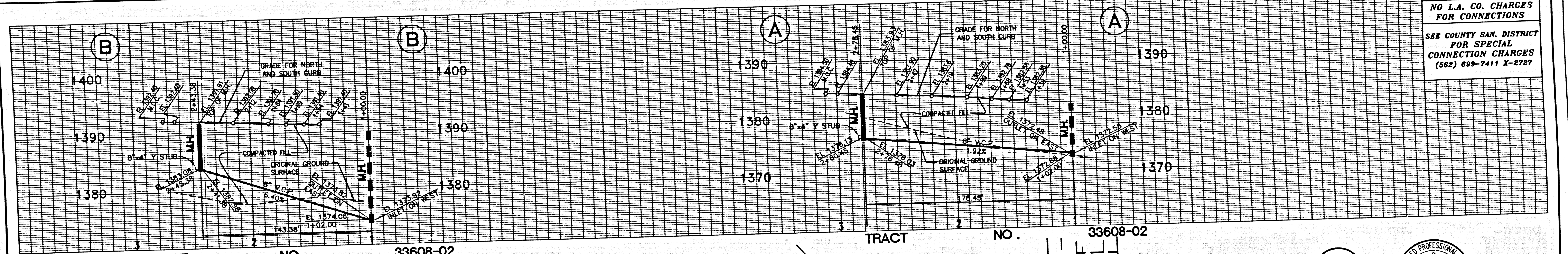
SCALE: VERT. 1"=8'  
HORIZ. 1"=40'



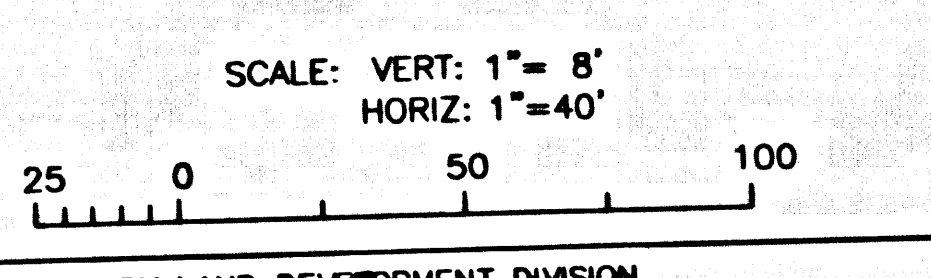
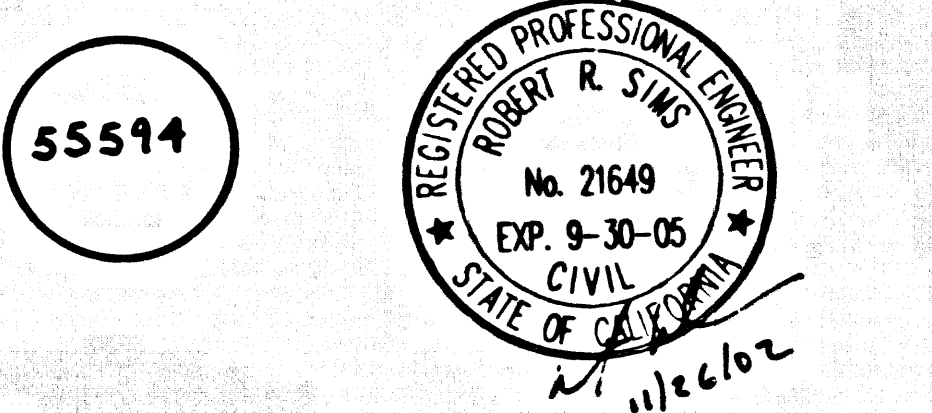
REVIEWED BY LAND DEVELOPMENT DIVISION  
DATE 9/25/01

① TRACT 33608-2 ON PT

DOUBLE SCALE  
NO L.A. CO. CHARGES  
FOR CONNECTIONS  
SEE COUNTY SAN. DISTRICT  
FOR SPECIAL  
CONNECTION CHARGES  
(562) 699-7411 X-2727

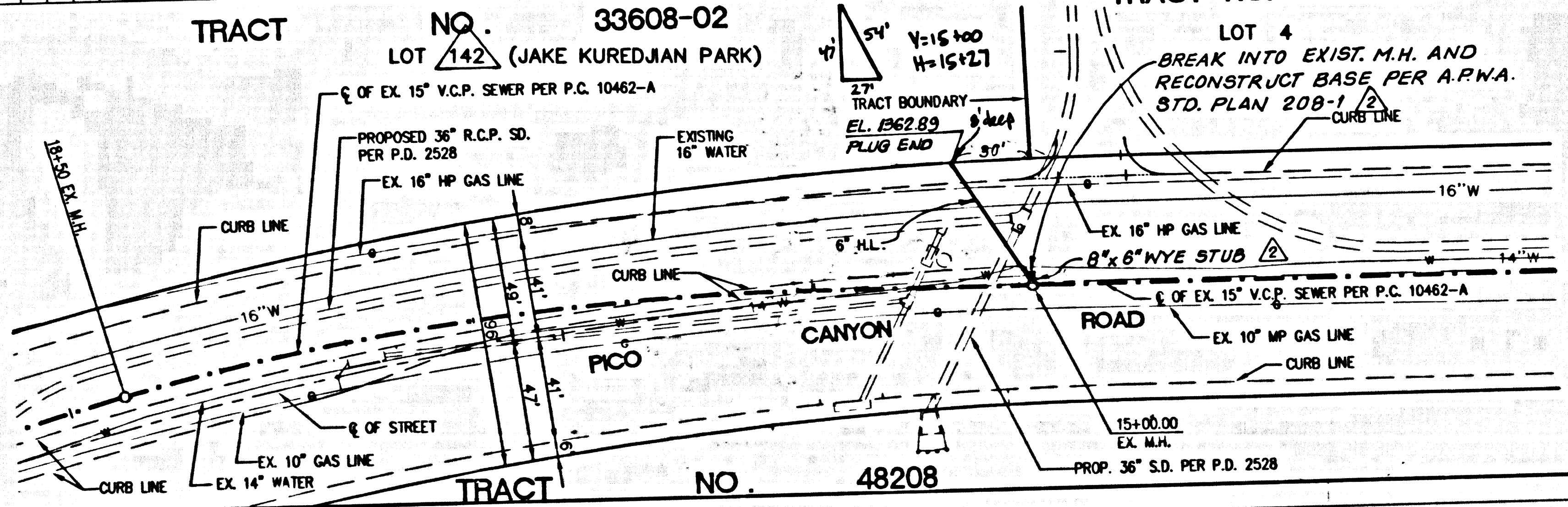
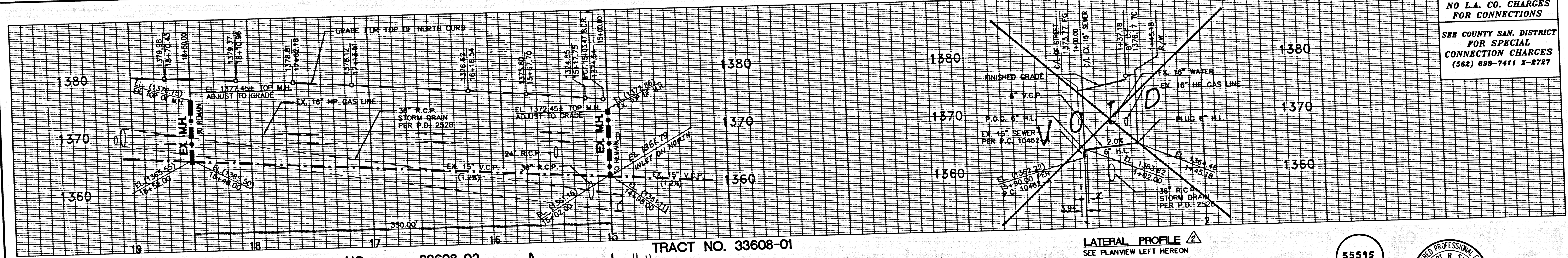


BACKWATER VALVES MAY BE REQUIRED  
FOR LOT WITH NO. ENCLOSED WITH

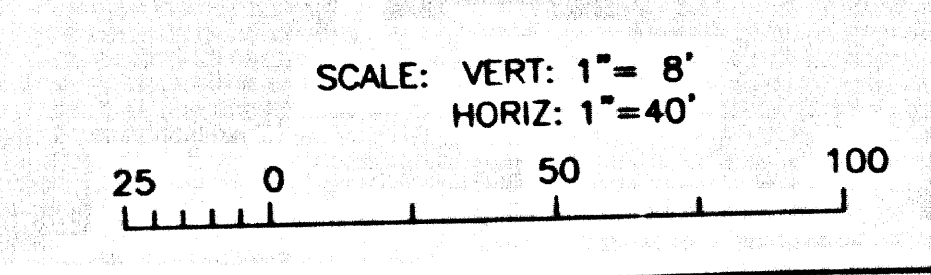
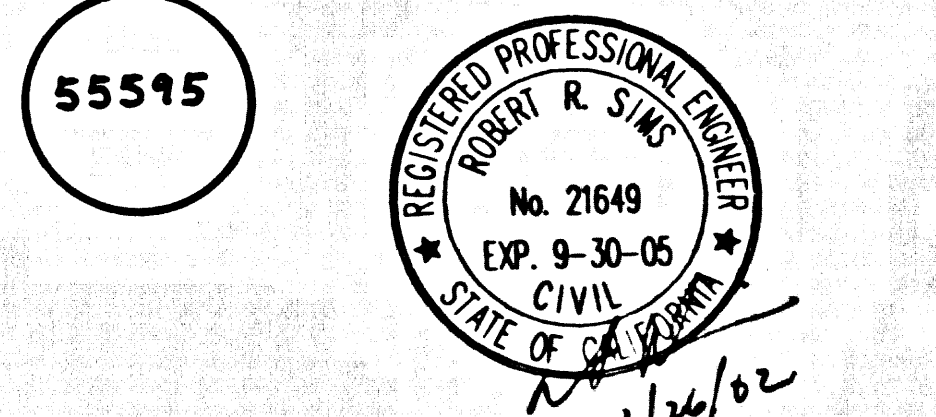


REVIEWED BY LAND DEVELOPMENT DIVISION  
DATE 9/25/01

DOUBLE SCALE  
NO L.A. CO. CHARGES  
FOR CONNECTIONS  
SEE COUNTY SAN. DISTRICT  
FOR SPECIAL  
CONNECTION CHARGES  
(562) 699-7411 X-2727



NOTICE TO CONTRACTOR  
MAINTAIN SEWER SERVICE  
AT ALL TIMES.



REVIEWED BY LAND DEVELOPMENT DIVISION  
DATE 9/25/01

TRACT NO. 33608-02

TRACT NO. 48208