

**BENCH MARKS**  
 BM L4595 Elev. 1501.585  
 L & T IN N CB 4 FT. E/O BCR AT NE COR.  
 SOLEDAD CYN. RD. & DEEP CREEK DR. 42 FT. N  
 & 61 FT. E/O APPROX. C/L INT.  
 NEWHALL QUAD 1993

**DOUBLE SCALE**

**INDEX MAP-1417**  
 SCALE: 1" = 800'  
 P.C. 11580 D.S. 510

THOMAS GRADE PAGE: 4552-A-3, A-4  
 NOTE: NUMBERS IN CIRCLES INDICATE PAGE NUMBERS

NO.	REVISION	REVISED BY	APPROVED BY	DATE

**STORMWATER POLLUTION CONTROL REQUIREMENTS FOR SEWER CONSTRUCTION**

- Eroded sediments and other pollutants must be retained on site and may not be transported from the site via sheet flow, swales, grass drains, natural drainage courses, or wind.
- Stockpiles of earth and other construction related materials must be protected from being transported from the site by the forces of wind or water.
- Fuels, oils, solvents, and other toxic materials must be stored in accordance with their labeling and are not to contaminate the soil and surface waters. All approved storage containers are to be protected from the weather. Spills must be cleaned up immediately and disposed of in a proper manner. Spills may not be washed into the drainage system.
- Excess or waste concrete may not be washed into the public way or any other drainage system. Provisions shall be made to retain concrete wastes on site until they can be disposed of as solid waste.
- Trash and construction-related solid wastes must be deposited into a covered receptacle to prevent contamination of rainwater and dispersed by wind.
- Sediments and other materials may not be tracked from the site by vehicle traffic. The construction entrance roadway must be stabilized so as to inhibit sediments from being deposited into the public way. Accidental depositions must be swept up immediately and may not be washed down by rain or other means.
- Any slopes with disturbed soils or denuded of vegetation must be stabilized so as to inhibit erosion by wind and water.

- STANDARD PLANS:**  
 THE FOLLOWING LATEST REVISED STANDARD PLANS ON FILE IN THE OFFICE OF THE FOLLOWING DEPARTMENT SHALL APPLY IN THE CONSTRUCTION OF THIS PROJECT.
- LOS ANGELES COUNTY DEPARTMENT OF PUBLIC WORKS
- APWA 208-0 BREAKING INTO EXISTING MANHOLES
  - APWA 222-0 HOUSE CONNECTION SEWER
  - APWA 223-0 HOUSE CONNECTION ROUNDING
  - APWA 200-2 NON-REINFORCED PRECAST CONCRETE MANHOLE
  - APWA 225-1 BLANKET PROTECTION FOR PIPES
- LEGEND FOR SANITARY SEWER PLANS AND PROFILES AND DISTRICT MAPS:
- 2008-0 RECORD FOR SEWER PIPE
  - 2021-0 PIPE OR THE SUPPORT
  - 2027-0 ALLOWABLE TRENCH WIDTHS
  - 2038-0 MINIMUM PUBLIC SAFETY REQUIREMENTS
  - 2015-0 STANDARD MANHOLE STEP
  - 2023-0 CHAINING AND DIMENSMENT
  - 2100-0 REQUIREMENTS FOR SAN. SEWERS NEAR WATER MAINS

NO CONNECTION FOR THE DISPOSAL OF INDUSTRIAL WASTES SHALL BE MADE TO SEWER SHOWN ON THESE DRAWINGS UNTIL A PERMIT FOR INDUSTRIAL WASTEWATER DISCHARGE HAS BEEN ISSUED BY THE SANITATION DISTRICTS FOR SAID CONNECTIONS.

BEFORE BREAKING INTO OR CONSTRUCTION ON A COUNTY SANITATION DISTRICT SEWER AND PRIOR TO FINAL ACCEPTANCE OF THE PROJECT, A SANITATION DISTRICT INSPECTOR SHALL BE NOTIFIED BY PHONE AT (661) 266-4683, SO THAT REQUIRED INSPECTION CAN BE MADE.

**PRIVATE CONTRACT SEWER GENERAL NOTES**

- The following general notes are to be included on Page 1 of all Private Contract Sewer Plans:
- A sewer construction permit shall be obtained and a fee paid for construction inspection and record plans to the Department of Public Works of the Permit Counter, 900 South Fremont Avenue, 8th Floor, Alhambra, at least 72 hours prior to starting work under this permit. Copies of all other required permits, such as Road Excavation, Caltrans, etc., must be filed with the permit application.
  - Prior to issuance of any permit, the contractor shall file a permit for excavations and trenches from the State of California Division of Industrial Safety, and a Certificate of Worker's Compensation Insurance with the Department of Public Works named as the Certificate Holder to be notified 30 days prior to the start of work.
  - If work is done in a State Highway, a permit must be obtained from the State of California Division of Highways, 1200 South Spring Street, Los Angeles, California.
  - The contractor shall contact the district office listed on the "Application for Construction Permit" to arrange for an acceptable construction start date.
  - Approval of this plan by the County of Los Angeles does not constitute a representation as to accuracy of the location of or the existence or non-existence of any underground utility pipe or structure within the limits of this project. The note applies to all pages.
  - All work shall be in accordance with the latest approved edition of the "Standard Specifications for Public Works Construction, including supplements and the latest Special Provisions for the Construction of Sanitary Sewers and shall be processed only in the presence of the Department of Public Works.
  - The contractor's attention is directed to Section 7-10.4.1 of the Standard Specifications for Public Works Construction in regard to safety orders and shall conform to the "Minimum Public Safety Requirements" as shown on Los Angeles Department of Public Works Standard S-2.
  - Elevations are in feet above U.S.C. & G.S. sea level datum of 1929.
  - No revisions shall be made in these plans without the approval of the Director of Public Works.
  - No representative of the Department of Public Works will survey or lay out any portion of the work. Grades to which this improvement is to be constructed are shown on plans and profiles. Grade points for top of curbs, centerline of streets, or centerline of ditches, are shown by circles on profiles at all points between designated points. The grade shall be established so as to conform to a straight line of drop between said designated points.
  - The private engineer shall furnish the Department of Public Works with grade sheets and alignment for all house laterals and "T" or "T" branches and shall provide stakes for them at their proper locations with stationing plainly marked. All house laterals shall be constructed in a straight alignment at right angles from the main line sewer except as shown on the plans. House laterals from chimneys shall not have an angle of less than 45 degrees with the M.L. sewer. Any change in alignment shall be requested in writing by the private engineer.
  - The private engineer shall furnish the house lateral depth at the property line below the top of curb elevation for each house lateral on the grade sheet.
  - The Engineer shall revise this plan to show the on-built location of House Laterals before the Sewer is accepted for public use and the Sewer security can be released.

**CONSTRUCTION NOTES**

- Provide survey stakes on the property line or property lines produced at right angles to the sewer line at the centerline of each manhole.
- Verified clay pipe joints shall be type "D" or "C" per standard specifications section 208-2.
- If a manhole is within three feet of the sewer, the sewer shall be encased per standard plan S-23, case R, two feet on each side from the point of interference.
- All joints between cast iron pipe and vitrified clay shall be made with a rubber sleeve joint, type "D" (with bushing if necessary) per standard specifications section 208-2.
- House laterals to be constructed with inverts at the property line 8 feet below curb grade except as noted.
- Use of tee branches may be used for connections to the mainline sewer except as noted.
- If during the course of construction, it is determined that there is less than four feet of cover over the top of a manhole or house lateral V.C.P. sewer which is not indicated on the plans, the pipes shall be encased per standard plan S-23, case R, unless otherwise approved by the director of Public Works.
- All structures shall be either brick or concrete manholes per standard plan S-3 or precast concrete sewer manholes per standard plan S-36, or reinforced precast concrete manhole per standard plan S-4, except as noted.
- Reinforce all trenches within paved areas to meet Los Angeles County Public Works or California State Highway requirements in accordance with the permits.
- Full compliance with section 306-1.3.4 of the standard specification will be required for backfill in street certification of boulevard construction and used adjacent by a qualified civil engineer shall be provided by the permittee prior to the issuance of a certificate of partial acceptance.
- All backfill and fill outside of the street right of way shall be compacted to 90% of the maximum density as determined by ASTM soil compaction test D 1557-78 method "D" unless otherwise specified. This shall be certified by a qualified civil engineer. This certification shall be submitted to the Construction Division of the Department of Public Works prior to the acceptance of the work by the county.
- Manhole tops in unimproved rights of way to be six inches above finished grade.
- Sewers to be tested for leakage per section 306-1/4 of the standard specifications and special provisions.
- All Wyes and/or House Laterals are to be located at least five feet apart and when possible not closer than five feet to any Manhole.

**PROFILE, ALIGNMENT AND GRADE OF SANITARY SEWERS TO BE CONSTRUCTED IN**  
 LOST CANYON ROAD, ET AL  
 D.S. 510 PC NO. 11580  
 3 SHEETS: 6 PAGES  
 COUNTY OF LOS ANGELES CALIFORNIA  
 INDEX 1417

HARRY H. STONE DIRECTOR OF PUBLIC WORKS  
 OF LOS ANGELES CALIF.

APPROVED: LAND DEVELOPMENT DIVISION  
 BY: *[Signature]* 2/21/01  
 HIGHER DESIGN ENGINEER

SUBMITTED BY: *[Signature]* 2/21/01  
 SUBMISSION PLAN CHECKING SECTION

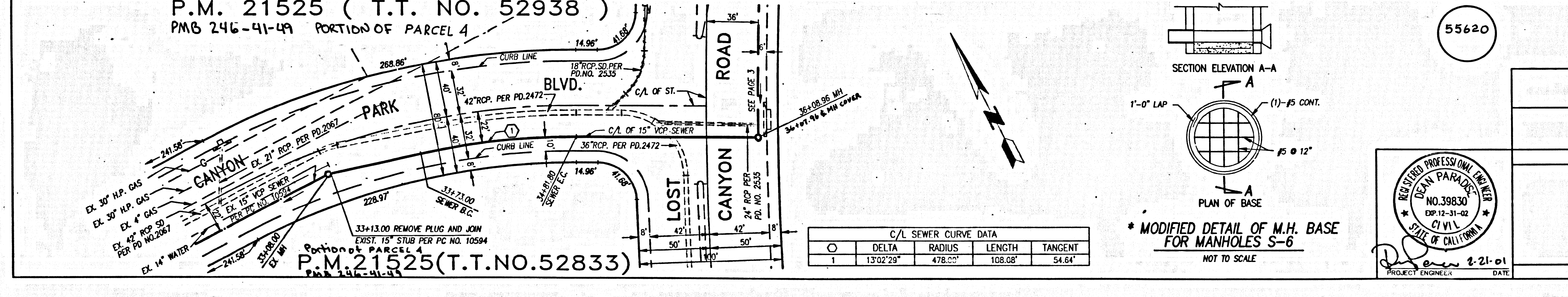
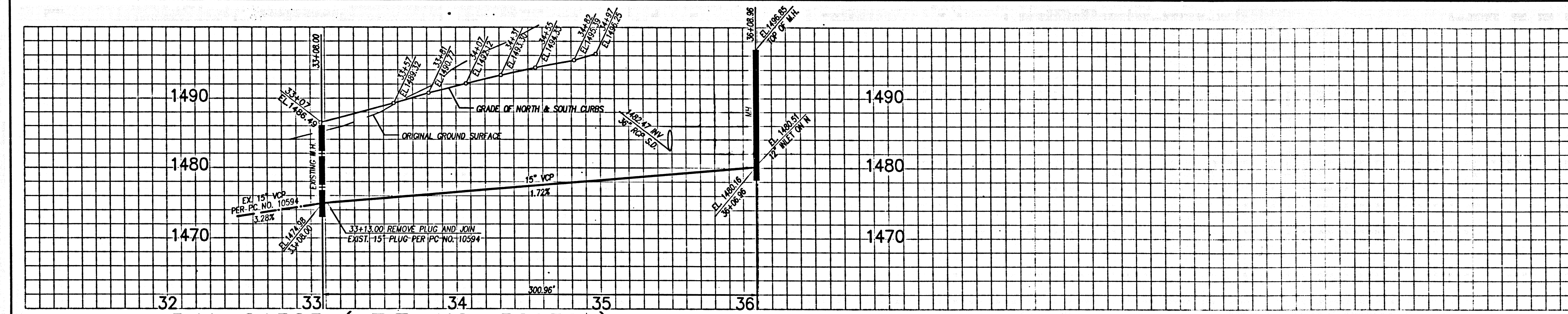
APPROVED: COUNTY SANITATION DISTRICT  
 JAMES F. STARK - CHIEF ENGINEER and GENERAL MANAGER  
 COUNTY SANITATION DISTRICT NO. 26

BY: *[Signature]* DATE: 2/21/2001  
 OFFICE ENGINEER

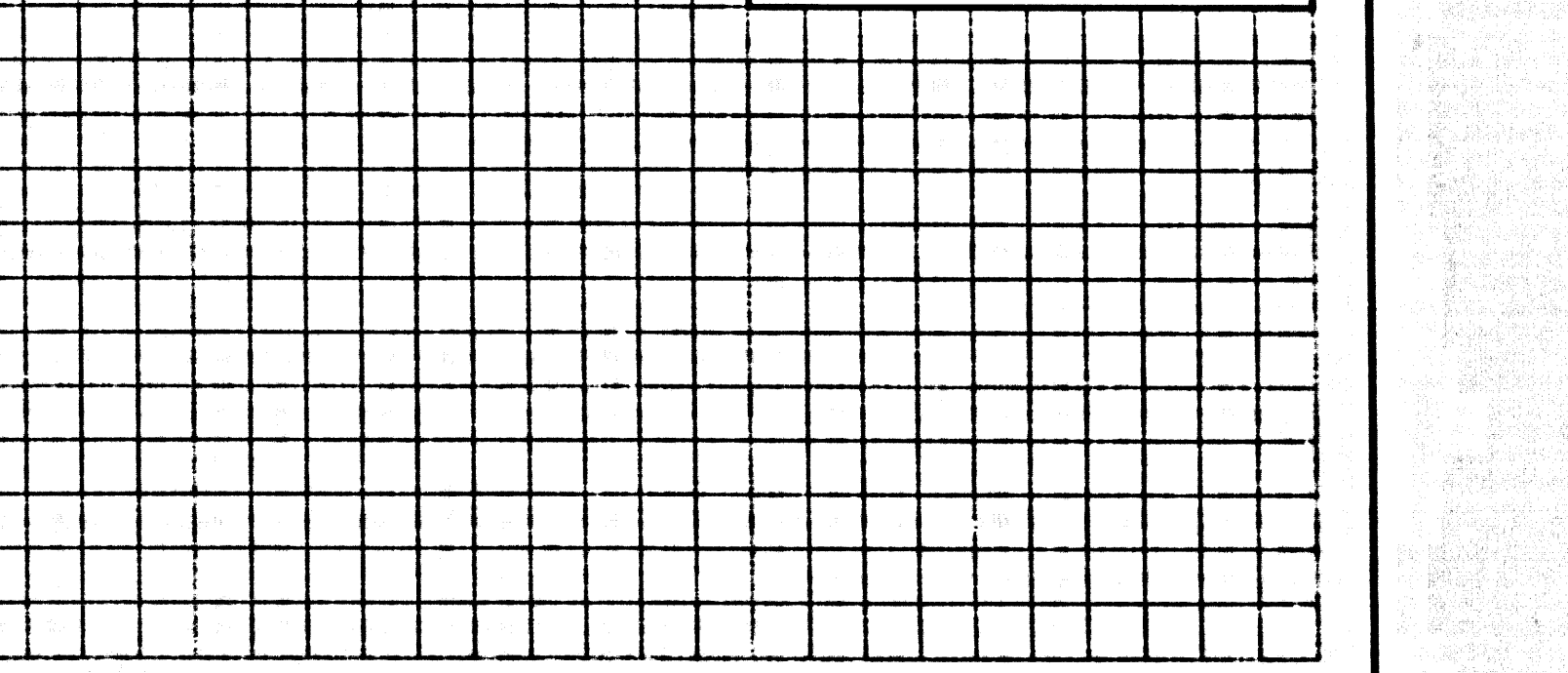
**PRIVATE ENGINEERS NOTICE TO CONTRACTORS:**

THE EXISTENCE AND LOCATION OF ANY UNDERGROUND UTILITY PIPES OR STRUCTURES SHOWN ON THESE PLANS IS REQUIRED BY A SEARCH OF AVAILABLE RECORDS TO THE BEST OF OUR KNOWLEDGE. THERE ARE NO EXISTING UTILITIES EXCEPT AS SHOWN ON THIS MAP. THE CONTRACTOR IS REQUIRED TO TAKE PRECAUTIONARY MEASURES TO PROTECT THE UTILITY LINES SHOWN AND ANY OTHER LINES NOT OF RECORD OR NOT SHOWN ON THIS DRAWING. PRIOR TO EXCAVATION THE CONTRACTOR SHALL CALL TOLL FREE 1-800-422-4133 TO VERIFY THE UNDERGROUND LOCATION OF GAS AND TELEPHONE LINES. THE CONTRACTOR SHALL ALSO CALL MR. RAY CHAMBERS OF GENERAL TELEPHONE COMPANY AT 1-805-946-4671 SO THAT THEY CAN MARK THE LOCATION OF UNDERGROUND TELEPHONE LINES.

*[Signature]* 2-21-01  
 RCE NO. 39830 DATE



**DOUBLE SCALE**  
 NO L.A.CO. CHARGES FOR CONNECTIONS  
 SEE CO. SANITATION DISTRICT FOR SPECIAL CONNECTION CHARGES  
 TEL. (562) 699-7411 EX. 2727



**SANITARY SEWER PLANS IN D.S. 510 PC NO. 11580**

RENEWED LAND DEVELOPMENT DIVISION  
 BY: *[Signature]* 2/21/01

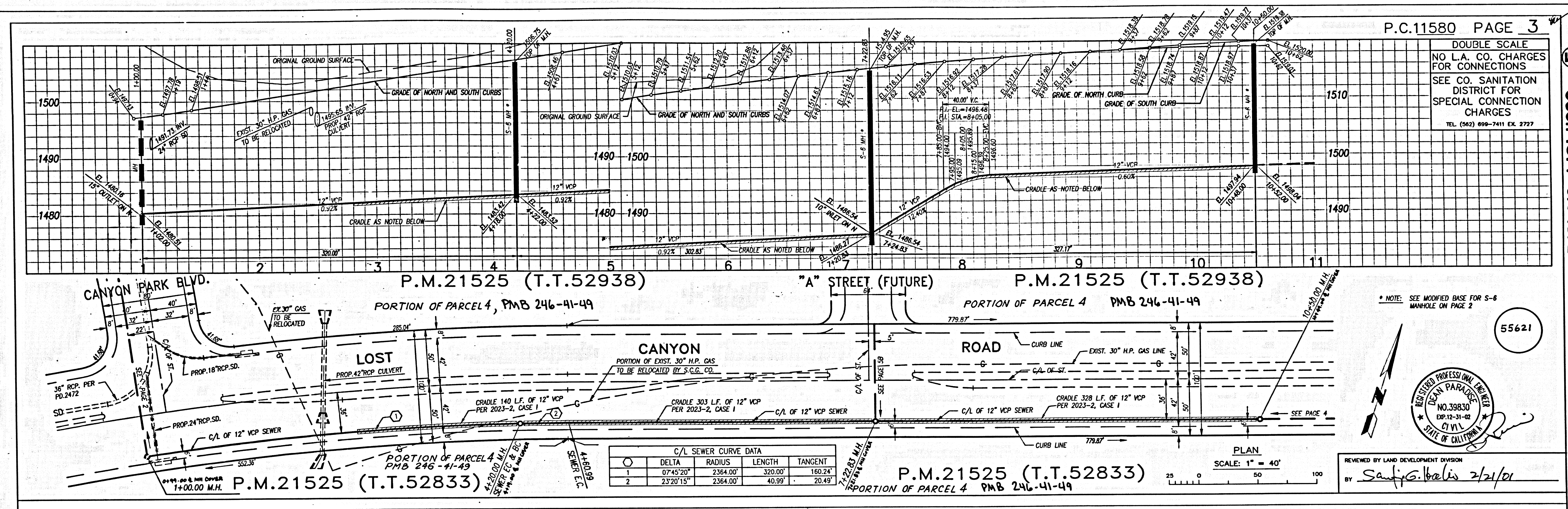
PREPARED BY:  
**SIKAND ENGINEERING ASSOCIATES**  
 CONSULTING ENGINEERS  
 15230 GARIBAY BLVD.  
 VAN NUYS, CALIFORNIA 91411 (818) 787-8550



PROJECT ENGINEER: *[Signature]* DATE: 2-21-01

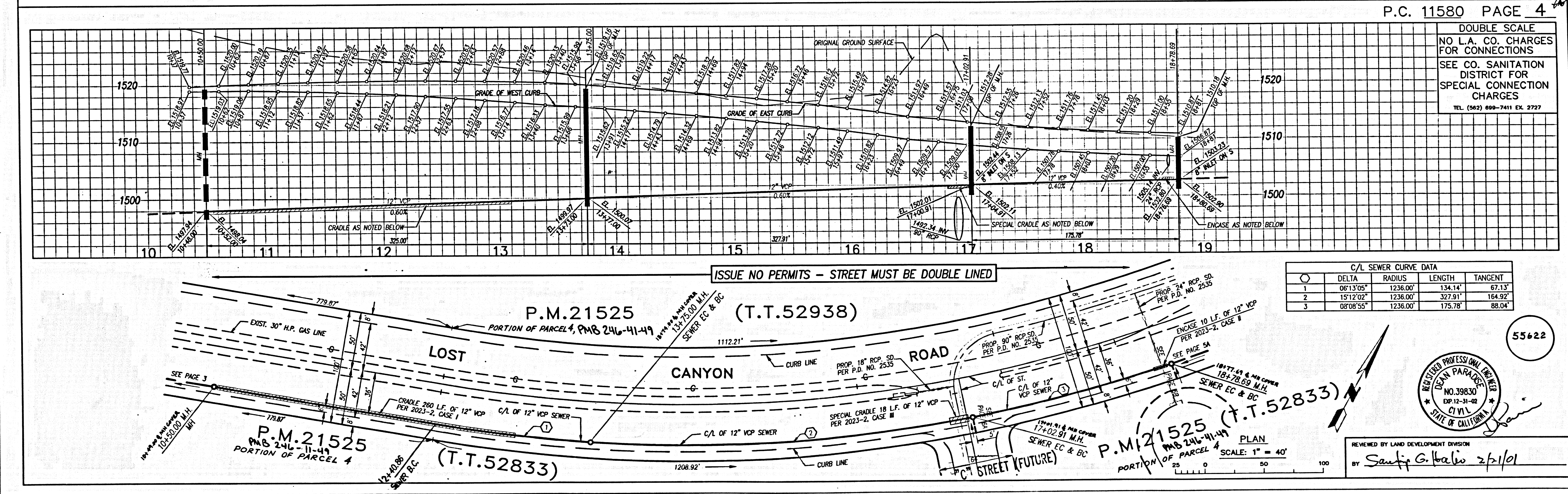
08at 09 02 80 08at 09 02 80





P.C.11580 PAGE 3  
DOUBLE SCALE  
NO L.A. CO. CHARGES FOR CONNECTIONS  
SEE CO. SANITATION DISTRICT FOR SPECIAL CONNECTION CHARGES  
TEL. (942) 898-7411 EX. 2727

\*NOTE: SEE MODIFIED BASE FOR S-6 MANHOLE ON PAGE 2  
55621  
RECEIVED PROFESSIONAL ENGINEER  
DAN PARADEE  
NO. 39830  
EXP. 12-31-02  
CIVIL  
STATE OF CALIFORNIA



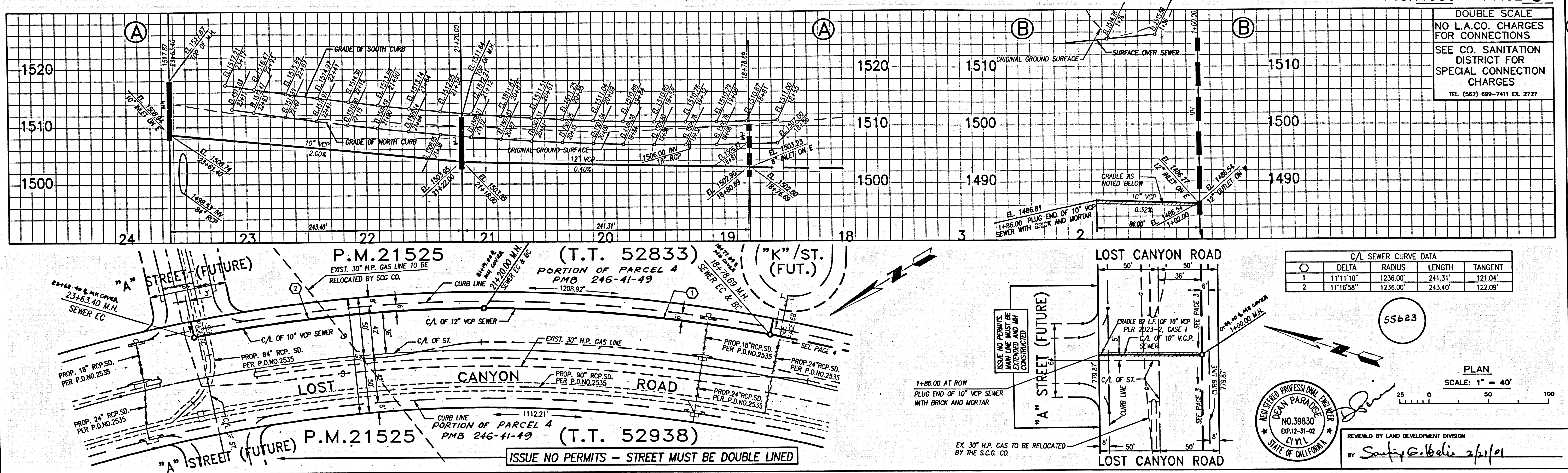
P.C. 11580 PAGE 4  
DOUBLE SCALE  
NO L.A. CO. CHARGES FOR CONNECTIONS  
SEE CO. SANITATION DISTRICT FOR SPECIAL CONNECTION CHARGES  
TEL. (942) 898-7411 EX. 2727

55622  
RECEIVED PROFESSIONAL ENGINEER  
DAN PARADEE  
NO. 39830  
EXP. 12-31-02  
CIVIL  
STATE OF CALIFORNIA

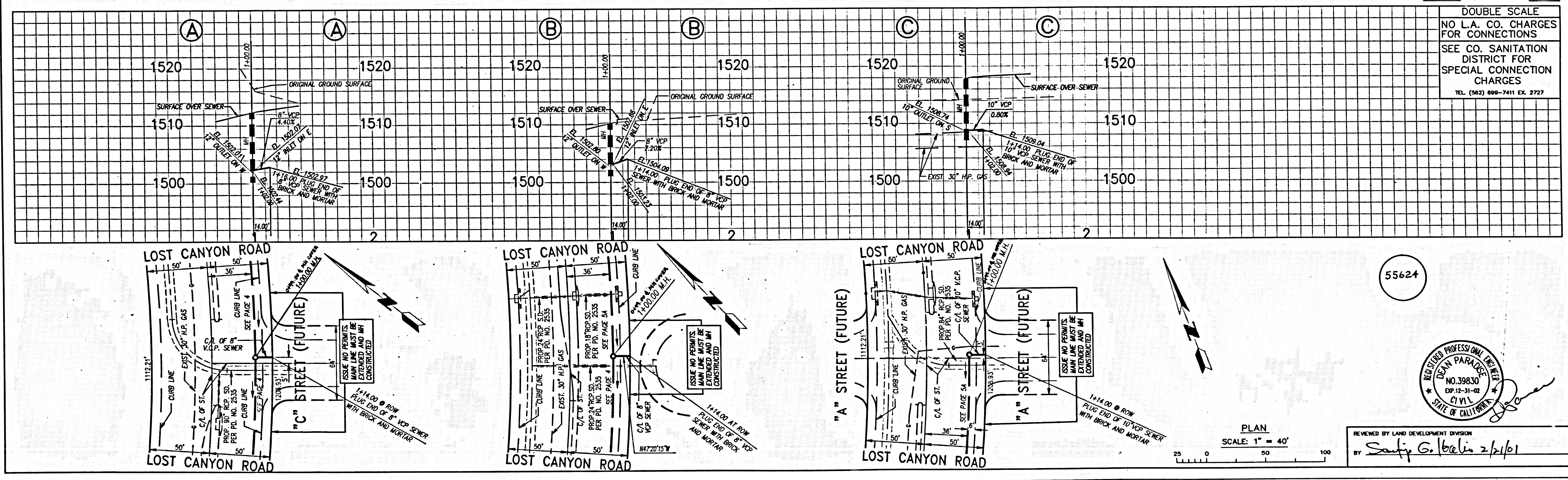
SHEET 2 OF 2

X:\Sawyer\0098-004\32\Engineering\Sewer\SS\_LO-82.dwg 11/7/00 13:07:04





08at 09.23



08at 09.23

X:\Sewer\0096-004\32\Engineering\Sewer\SS\_LC-03.dwg 02/21/01 09:51:17