

STORMWATER POLLUTION CONTROL REQUIREMENTS FOR SEWER CONSTRUCTION

- Eroded sediments and other pollutants must be retained on site and may not be transported from the site via sheet flow, swales, area drains, natural drainage courses, or ditches.
- Slopes of earth and other construction related materials must be protected from being transported from the site by the forces of wind or water.
- Fuels, oils, solvents, and other toxic materials must be stored in accordance with their listing and are not to contaminate the soil and surface waters. All approved storage containers are to be protected from the weather. Spills must be cleaned up immediately and disposed of in a proper manner. Spills may not be washed into the drainage system.
- Excess or waste concrete may not be washed into the public way or any other drainage system. Provisions shall be made to retain concrete wastes on site until they can be disposed of as solid waste.
- Trash and construction-related solid wastes must be deposited into a covered receptacle to prevent contamination of receptor and disposal by wind.
- Sediments and other materials may not be tracked from the site by vehicle traffic. The construction entrance roadway must be stabilized so as to inhibit sediments from being deposited into the public way. Accidental deposits must be swept up immediately and may not be washed down by rain or other means.
- Any slopes with disturbed soils or denuded of vegetation must be stabilized so as to inhibit erosion by wind and water.

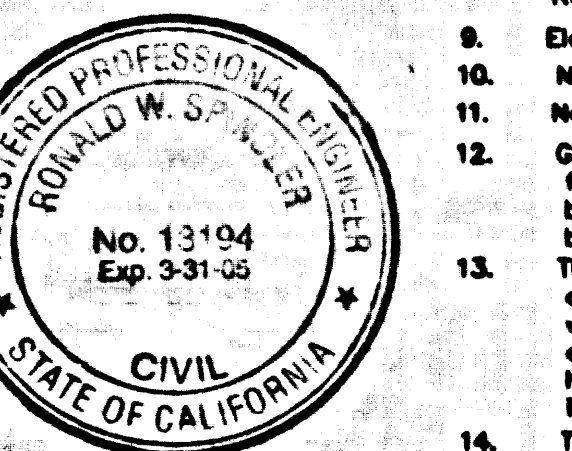
- | | |
|---|--|
| CA001 - Dewatering Operations | ESC10 - Seeding and Planting |
| CA002 - PALING OPERATIONS | ESC11 - MULCHING |
| CA003 - STRUCTURE CONSTRUCTION AND PAINTING | ESC20 - GEOTEXTILES AND MATS |
| CA010 - MATERIAL DELIVERY AND STORAGE | ESC21 - OUST CONTROLS |
| CA020 - SOIL WASTE MANAGEMENT | ESC22 - TEMPORARY STREAM CROSSING |
| CA021 - HAZARDOUS WASTE MANAGEMENT | ESC23 - CONSTRUCTION ROAD STABILIZATION |
| CA023 - CONCRETE WASTE MANAGEMENT | ESC24 - STABILIZED CONSTRUCTION ENTRANCE |
| CA024 - SANITARY SEPTIC WASTE MANAGEMENT | ESC25 - STORM DRAIN INLET PROTECTION |
| CA030 - VEHICLE AND EQUIPMENT CLEANING | |
| CA031 - VEHICLE AND EQUIPMENT FUELING | |
| CA032 - WASHING AND EQUIPMENT MAINTENANCE | |
| CA033 - PRESERVATION OF EXISTING VEGETATION | |

STANDARD PLANS:
THE FOLLOWING LATEST REVISED STANDARD PLANS ON FILE IN THE OFFICE OF THE FOLLOWING DEPARTMENT SHALL APPLY IN THE CONSTRUCTION OF THIS PROJECT.

LOS ANGELES COUNTY DEPARTMENT OF PUBLIC WORKS

NO.	REVISION	REVISED BY	APPROVED BY	DATE
1	REVISION 1	[Signature]	[Signature]	12-13-01
1	REVISION 2	[Signature]	[Signature]	11-21-01

DOUBLE SCALE



PRIVATE CONTRACT SEWER GENERAL NOTES

- A sewer construction permit shall be obtained and a fee paid for construction inspection and record plans to the Department of Public Works of the Permit Counter, 900 South Fremont Avenue, 8th Floor, Alhambra, at least 72 hours prior to starting work under this permit. Copies of all other required permits, such as Road Excavation, Caltrans, etc., must be filed with the permit application.
- Prior to issuance of any permit, the contractor shall file a permit for excavation and trenches from the State of California Division of Industrial Safety, and a Certificate of Worker's Compensation Insurance with the Department of Public Works named as the Certificate Holder to be renewed 30 days prior to cancellation of said permit.
- If work is done in a State Highway, a permit must be obtained from the State of California Division of Highways, 120 South Spring Street, Los Angeles, California.
- When work is within a contract city, the contractor must contact the Director of Public Works of that city to determine the location to pay the inspection fee.
- The contractor shall contact the district office listed on the "Application for Construction Permit" to arrange for an acceptable construction start date.
- Approval of this plan by the County of Los Angeles does not constitute a representation as to accuracy of the location of or the existence or non-existence of any underground utility pipes or structures within the limits of this project. This note applies to all pages.
- All work shall be in accordance with the latest approved edition of the "Standard Specifications for Public Works Construction, including appurtenments and the latest Special Provisions for the Construction of Sanitary Sewers and shall be preceded only in the presence of the Department of Public Works.
- The contractor's attention is directed to Section 7-10.4.1 of the Standard Specifications for Public Works Construction in regard to safety orders and shall conform to the "Minimum Public Safety Requirements" as shown on Los Angeles Department of Public Works' Standard S-3.
- Excavations are in feet above U.S.C. & G.S. sea level datum of 1929.
- No revisions shall be made to these plans without the approval of the Director of Public Works.
- No representative of the Department of Public Works will survey or lay out any portion of the work.
- Grades to which this improvement is to be constructed are shown on plans and profiles. Grade points for top of curbs, centerline of streets, or centerline of alleys, are shown by grades on profiles at all points between said designated points. The grade shall be established as to conform to a straight line drawn between said designated points.
- The private engineer shall furnish the Department of Public Works with grade sheets and stationing for all house laterals and "T" branches and shall provide stakes for them at their proper locations with adequate priority markers. House laterals shall be constructed in a straight alignment at right angles from the main sewer except as shown on the plans. House laterals from chimneys shall not have an angle of less than 45 degrees with the main sewer. Any change in alignment shall be requested in writing by the private engineer.
- The private engineer shall furnish the house lateral depth at the property line below the top of curb elevation for each house lateral on the grade sheet.

CONSTRUCTION NOTES

- Provide survey stakes on the property line or property lines produced at right angles to the sewer line at the centerline of each manhole.
- Verify every pipe joints shall be type "D" or "T" per standard specifications section 208-2.
- If a manhole is within three feet of the sewer, the sewer shall be encased per standard plan S-23, case 1, two feet on each side from the point of interference with the manhole.
- All joints between cast iron pipe and vitrified clay pipe shall be made with a rubber sleeve joint, type "D" (with bushing if necessary) per standard specifications section 208-2.
- House laterals to be constructed with invert at the property line 8 feet below curb grade except as noted.
- Use of tee branches may be used for connections to the mainline sewer except as noted.
- If during the course of construction, it is determined that there is less than four feet of cover over the top of a manhole or house lateral V.C.P. sewer which is not indicated on the plans, the pipe shall be encased per standard plan S-23, case 1, unless otherwise approved by the Director of Public Works.
- All structures shall be either brick sewer manholes per standard plan S-3 or precast concrete sewer manholes per standard plan S-36, or reinforced precast concrete manhole per standard plan S-8, except as noted.
- Reinforce all trenches with gravel areas in most Los Angeles County Public Works or California State Highway requirements in accordance with the permits.
- Full compliance with section 208-1.3.6 of the standard specification will be required for backfill in street certification of backfill compaction and sand equivalent by a qualified civil engineer shall be provided by the permittee prior to the issuance of a certificate of partial acceptance.
- All bottom and the outside of new street right of way shall be compacted to 90% of the maximum density as determined by ASTM soil compaction test D 1557-78 method "D" unless otherwise specified. This shall be certified by a qualified civil engineer. This certification shall be submitted to the Construction Division of the Department of Public Works prior to the acceptance of the work by the private engineer.
- Manhole tops in unimproved rights of way to be six inches above finished grade.
- Sewers to be tested for leakage per section 208-1/4 of the standard specifications and special provisions.

PROFILE, ALIGNMENT AND GRADE OF SANITARY SEWERS

TRACT 45433-03 PC NO. 11588

5 SHEETS: 9 PAGES
COUNTY OF LOS ANGELES CALIFORNIA
INDEX-1257

JAMES A. NOYES DIRECTOR OF PUBLIC WORKS
RECOMMENDED LAND DEVELOPMENT DIVISION
BY: [Signature] DATE: 7-13-01
SUBMITTED BY: [Signature] DATE: 7-13-01

APPROVED: COUNTY SANITATION DISTRICT
OF LOS ANGELES CALIF.
JAMES F. STALL - CHIEF ENGINEER AND GENERAL MANAGER
COUNTY SANITATION DISTRICT NO. 32

BY: [Signature] DATE: 7-12-2001
PRIVATE ENGINEERS NOTICE TO CONTRACTORS:

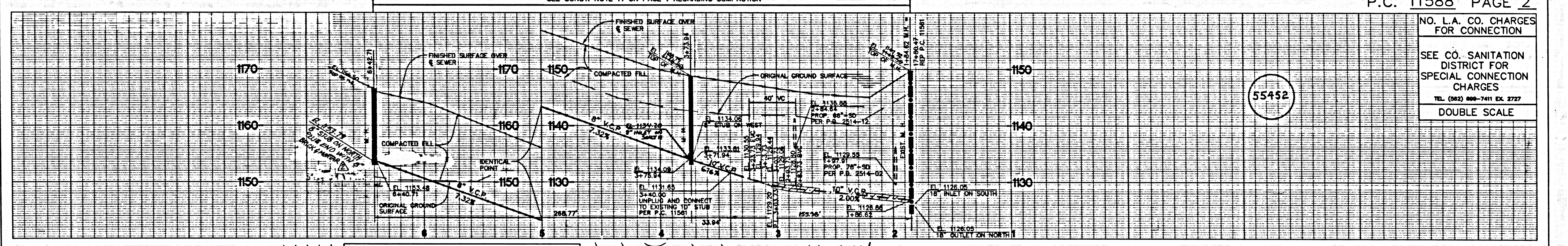
THE EXISTENCE AND LOCATION OF ANY UNDERGROUND UTILITY PIPES OR STRUCTURES SHOWN ON THESE PLANS IS REQUIRED BY A SEARCH OF AVAILABLE RECORDS TO THE BEST OF OUR KNOWLEDGE. THERE ARE NO EXISTING UTILITIES EXCEPT AS SHOWN ON THIS MAP. THE CONTRACTOR IS REQUIRED TO TAKE PRECAUTIONARY MEASURES TO PROTECT THE UTILITY LINES SHOWN AND ANY OTHER LINES NOT OF RECORD OR NOT SHOWN ON THIS DRAWING. PRIOR TO EXCAVATION THE CONTRACTOR SHALL CALL FREE 1-800-422-4133 TO VERIFY THE UNDERGROUND LOCATION OF GAS AND TELEPHONE LINES. THE CONTRACTOR SHALL ALSO CALL THE BAY COUNTRIES OF GENERAL TELEPHONE COMPANY AT 1-800-348-4871 SO THAT THEY CAN MARK THE LOCATION OF UNDERGROUND TELEPHONE LINES.

NO.	REVISION	REVISED BY	APPROVED BY	DATE
1	REVISION 1	[Signature]	[Signature]	12-13-01
1	REVISION 2	[Signature]	[Signature]	11-21-01

NO CONNECTION FOR THE DISPOSAL OF INDUSTRIAL WASTES SHALL BE MADE TO SEWERS SHOWN ON THESE DRAWINGS UNTIL A PERMIT FOR INDUSTRIAL WASTEWATER DISCHARGE HAS BEEN ISSUED BY THE SANITATION DISTRICTS FOR SAID CONNECTION.

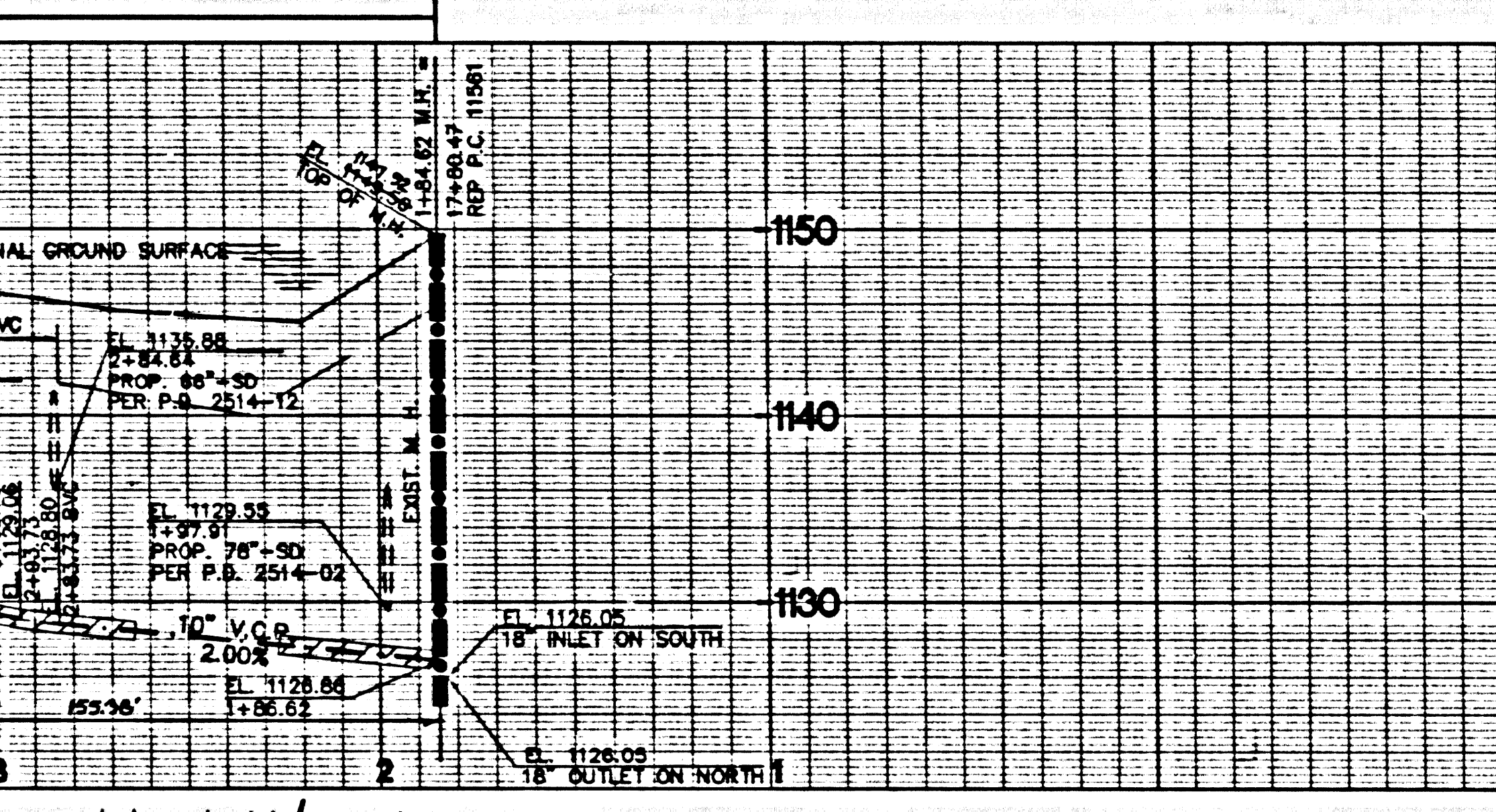
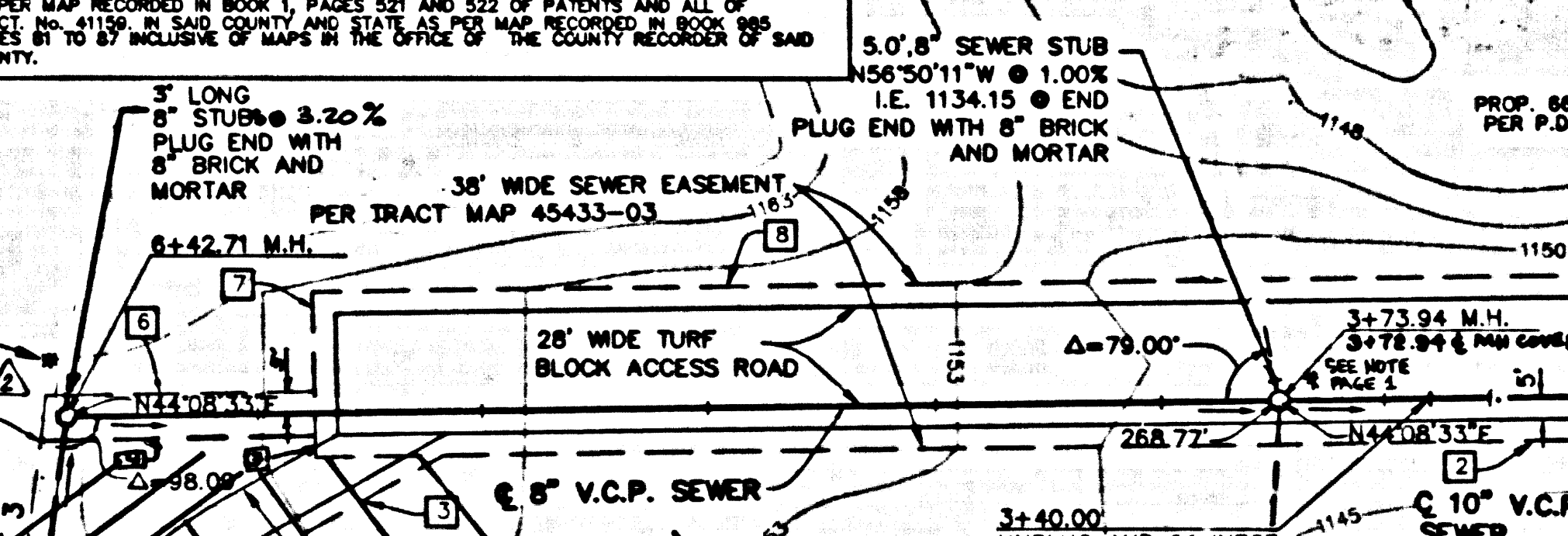
LOTS 309 THROUGH 339 ARE OPEN SPACE LOTS AND ARE RESTRICTED TO NO CONSTRUCTION OF RESIDENTIAL BUILDINGS AND WILL NOT BE SERVED BY THIS SEWER.

BEFORE BREAKING INTO OR CONSTRUCTION ON A COUNTY SANITATION DISTRICT SEWER AND PRIOR TO FINAL ACCEPTANCE OF THE PROJECT, SANITATION DISTRICT INSPECTION SHALL BE NOTIFIED BY PHONE (813) 266-4663 SO THAT REQUIRED INSPECTION CAN BE MADE.



SANITARY SEWER EASEMENT DATA

NO.	BEARING/Δ	RADIUS	LENGTH	TAN.
1	N 29°32'36" W		10.53'	
2	N 44°08'33" E		32.84'	
3	N 89°00'00" W		10.53'	
4	N 44°08'33" W		32.84'	
5	N 44°08'33" E		32.84'	
6	N 44°09'49" E		22.85'	
7	N 45°51'27" W		22.85'	
8	N 44°08'33" E		349.37'	



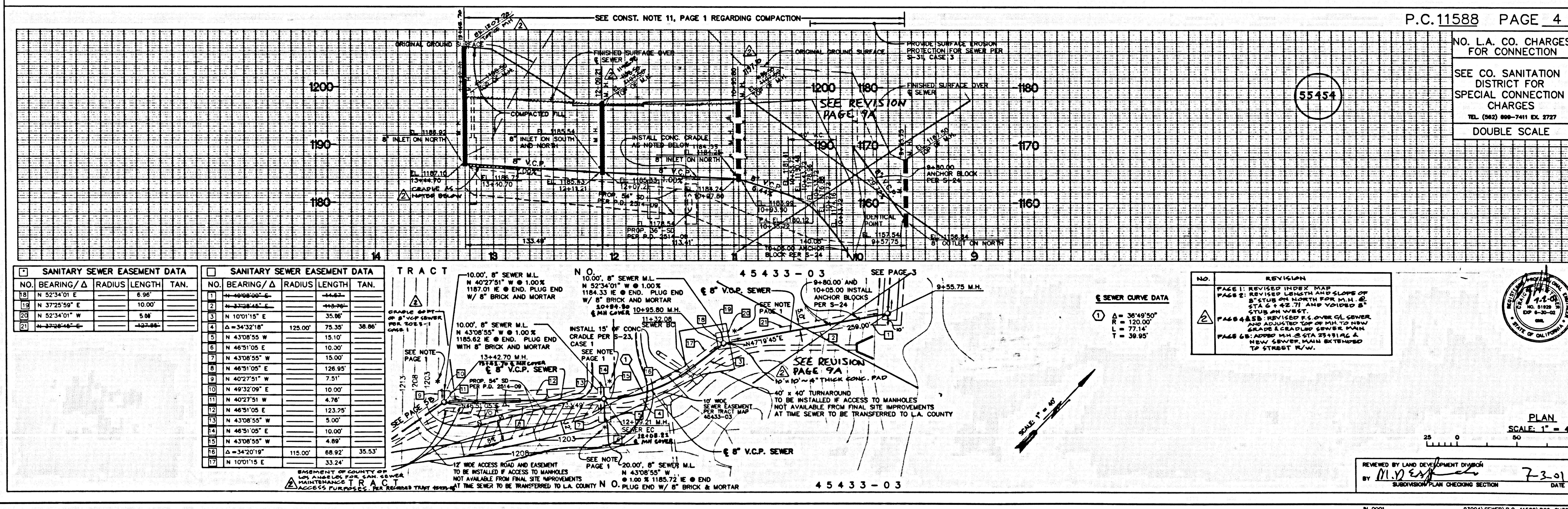
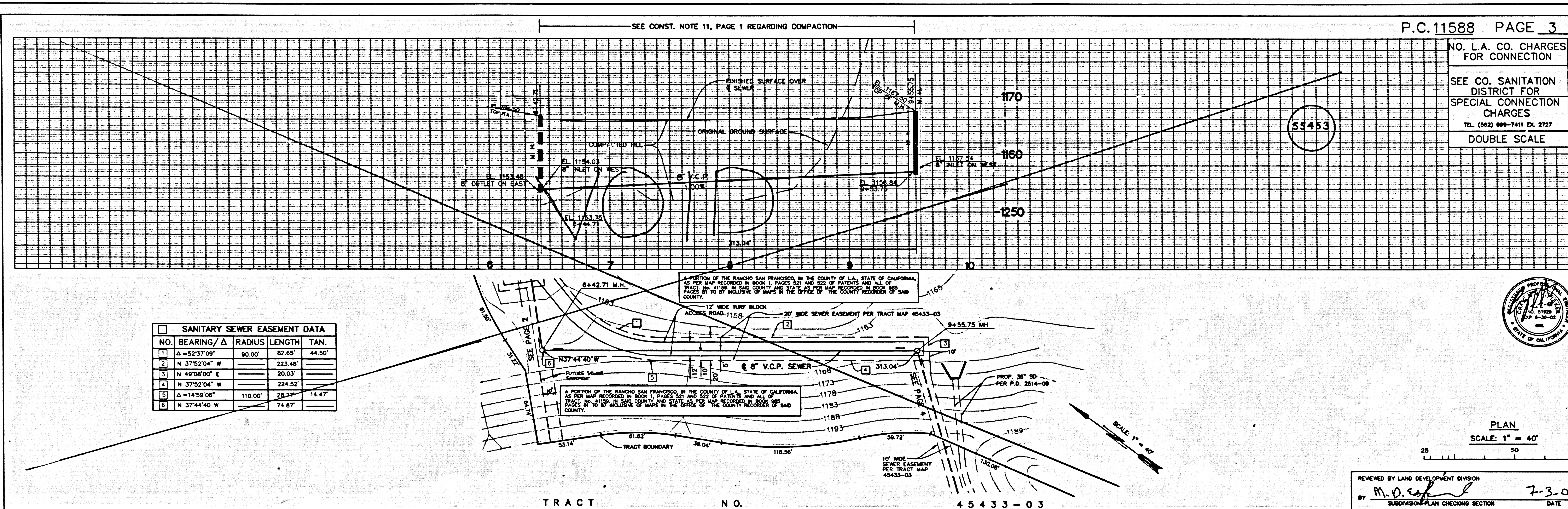
P.C. 11588 PAGE 2
NO. L.A. CO. CHARGES FOR CONNECTION
SEE CO. SANITATION DISTRICT FOR SPECIAL CONNECTION CHARGES
TEL: (818) 800-7411 EX. 2727
DOUBLE SCALE

PLAN SCALE: 1" = 40'
SANITARY SEWER PLANS IN
TR.45433-03 PC NO. 11588
REVISED LAND DEVELOPMENT DIVISION
BY: [Signature] DATE: 7-3-01
COUNTY OF LOS ANGELES DEPARTMENT OF PUBLIC WORKS

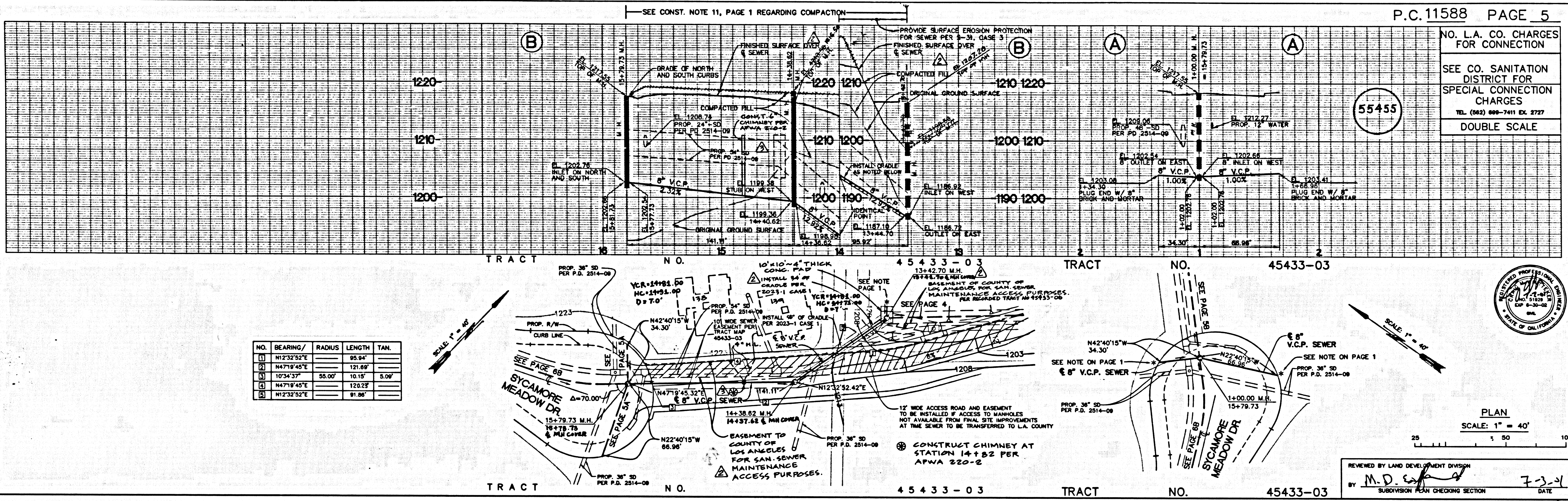
5962 LAPLACE COURT
SUITE 130
CARLSBAD, CA 92008
TEL: (760) 431-9896

ALLIANCE
LAND PLANNING & ENGINEERING INC.

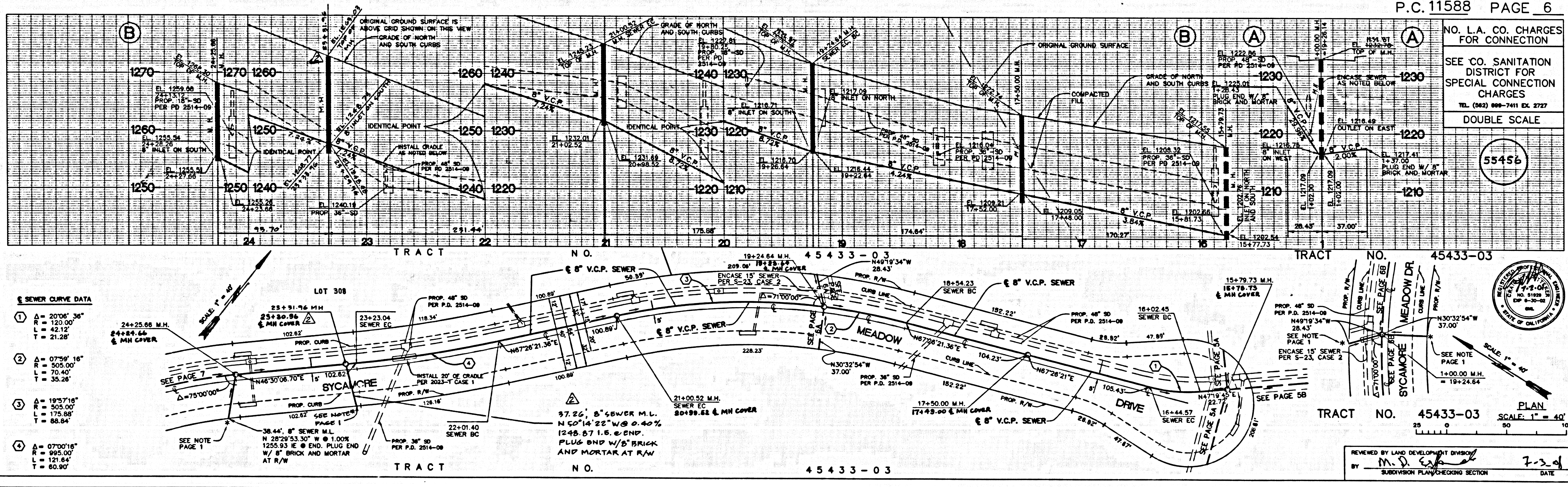
88877 3.9 1202 30-3342A 12A01



88211 .C.P. 30-33-03 BKACT 422A TACT



NO.	BEARING	RADIUS	LENGTH	TAN.
(1)	N12°32'52"E	95.94		
(2)	N47°19'45"E	121.69		
(3)	S10°34'37"E	35.00	10.15	3.09'
(4)	N47°19'45"E		126.23	
(5)	N12°32'52"E		97.86	



SEWER CURVE DATA

(1)	$\Delta = 20'06''36''$ R = 120.00' L = 42.12' T = 21.28'
(2)	$\Delta = 07'59''16''$ R = 305.00' L = 70.40' T = 35.28'
(3)	$\Delta = 19'57'18''$ R = 305.00' L = 175.88' T = 88.84'
(4)	$\Delta = 07'00'18''$ R = 495.00' L = 121.64' T = 60.90'

55455

PLAN SCALE: 1" = 40'

REVIEWED BY LAND DEVELOPMENT DIVISION
BY M.D. DATE 7-2-04
SUBDIVISION PLAN CHECKING SECTION

55456

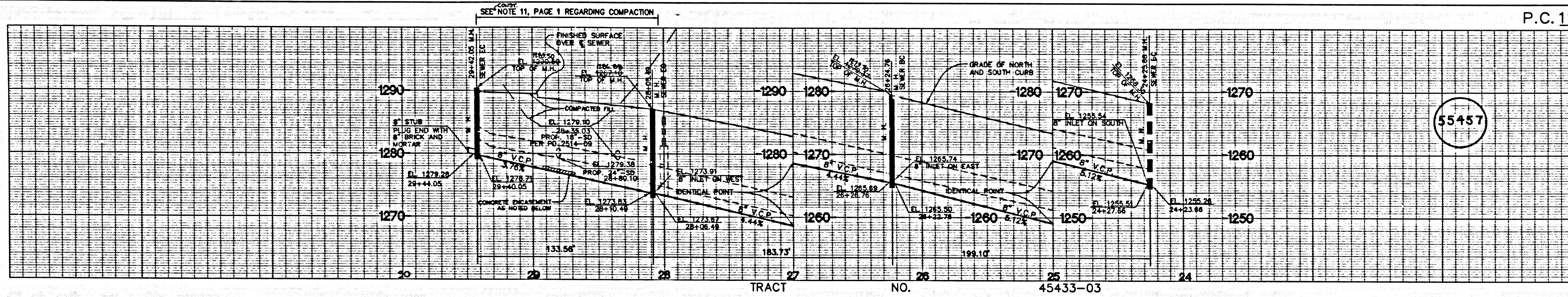
PLAN SCALE: 1" = 40'

REVIEWED BY LAND DEVELOPMENT DIVISION
BY M.D. DATE 7-2-04
SUBDIVISION PLAN CHECKING SECTION

8821T C.D. 30-3324T TRACT

NO. L.A. CO. CHARGES FOR CONNECTION
SEE CO. SANITATION DISTRICT FOR SPECIAL CONNECTION CHARGES
TEL. (802) 899-7411 EX. 2727
DOUBLE SCALE

NO. L.A. CO. CHARGES FOR CONNECTION
SEE CO. SANITATION DISTRICT FOR SPECIAL CONNECTION CHARGES
TEL. (802) 899-7411 EX. 2727
DOUBLE SCALE



P.C. 11588 PAGE 7

NO. L.A. CO. CHARGES FOR CONNECTION

SEE CO. SANITATION DISTRICT FOR SPECIAL CONNECTION CHARGES

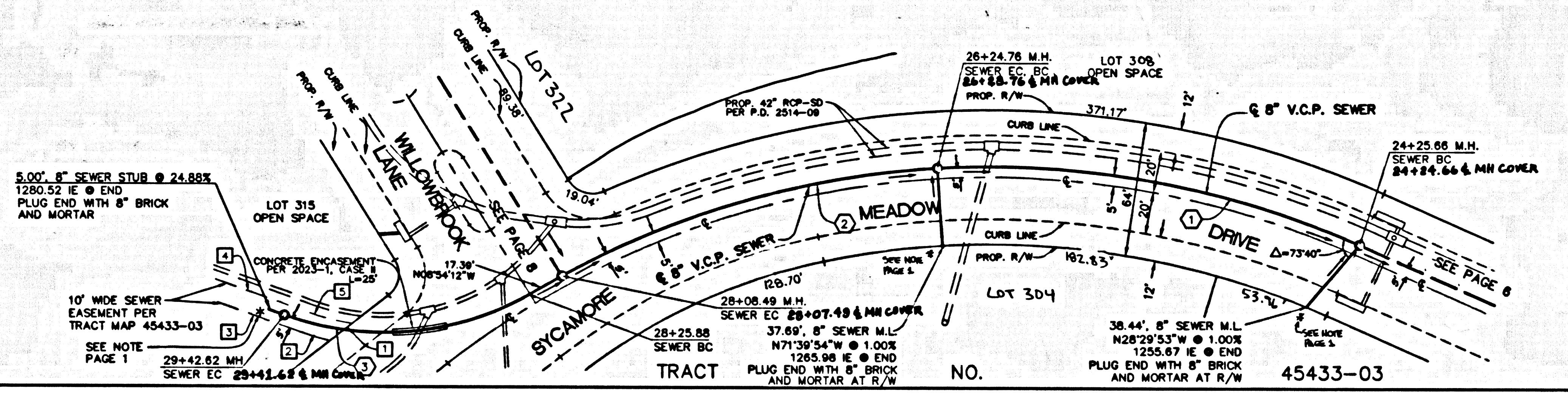
TEL. (862) 699-7411 EX. 2727

DOUBLE SCALE

SEWER CURVE DATA

- ① $\Delta = 28'10.00"$
 $R = 405.00'$
 $L = 199.10'$
 $T = 101.60'$
- ② $\Delta = 25'59.33"$
 $R = 405.00'$
 $L = 183.73'$
 $T = 93.47'$
- ③ $\Delta = 51'05.45"$
 $R = 130.14'$
 $L = 116.17'$
 $T = 62.27'$

SANITARY SEWER EASEMENT DATA			
NO.	BEARING/Δ	RADIUS	LENGTH TAN.
1	N 17°10'46" W	105.00'	13.08' 6.54'
2	Δ=4071'28"	105.00'	13.08' 6.54'
3	N 42°15'23" E	105.00'	66.53'
4	N 42°15'23" E	95.00'	19.94' 9.97'



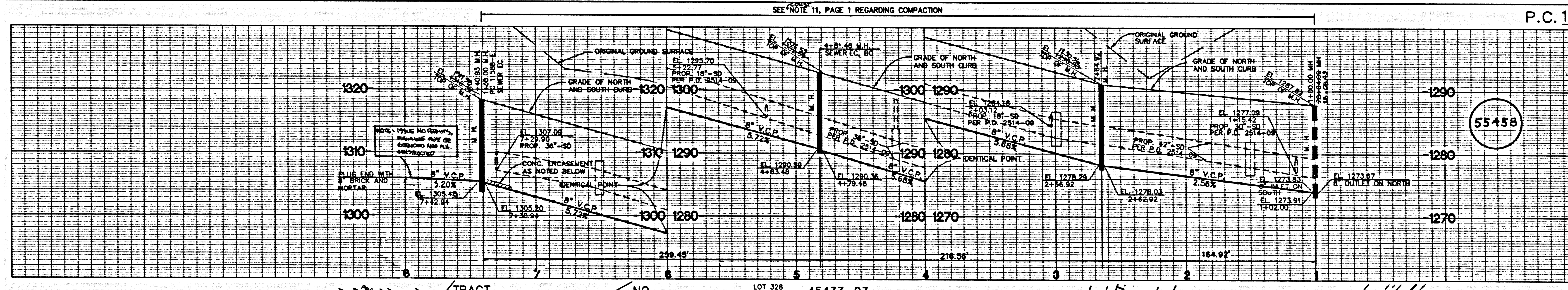
SCALE 1" = 40'

PLAN SCALE: 1" = 40'

REVIEWED BY LAND DEVELOPMENT DIVISION

BY *M.O. [Signature]* DATE 7-3-01

SUBDIVISION PLAN CHECKING SECTION



P.C. 11588 PAGE 8

NO. L.A. CO. CHARGES FOR CONNECTION

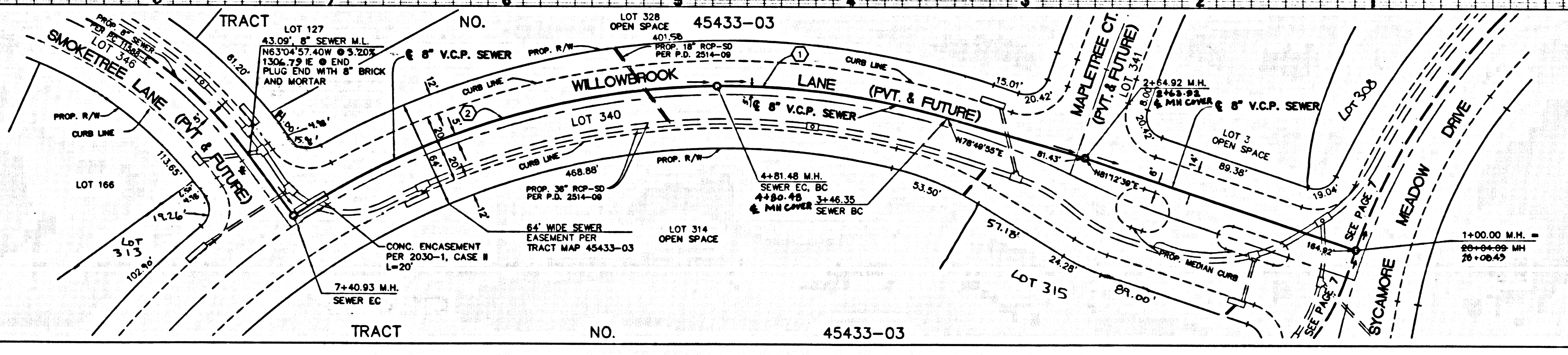
SEE CO. SANITATION DISTRICT FOR SPECIAL CONNECTION CHARGES

TEL. (862) 699-7411 EX. 2727

DOUBLE SCALE

SEWER CURVE DATA

- ① $\Delta = 17'33.23"$
 $R = 441.00'$
 $L = 133.13'$
 $T = 68.10'$
- ② $\Delta = 33'42.31"$
 $R = 441.00'$
 $L = 259.45'$
 $T = 133.60'$



SCALE 1" = 40'

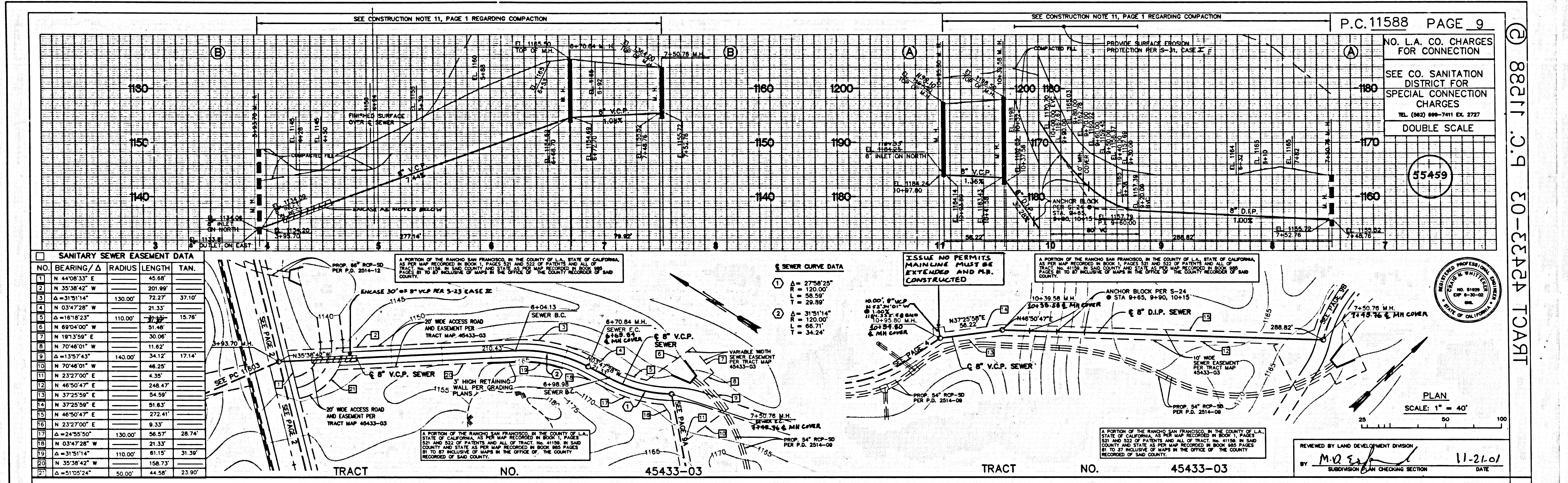
PLAN SCALE: 1" = 40'

REVIEWED BY LAND DEVELOPMENT DIVISION

BY *M.O. [Signature]* DATE 7-3-01

SUBDIVISION PLAN CHECKING SECTION

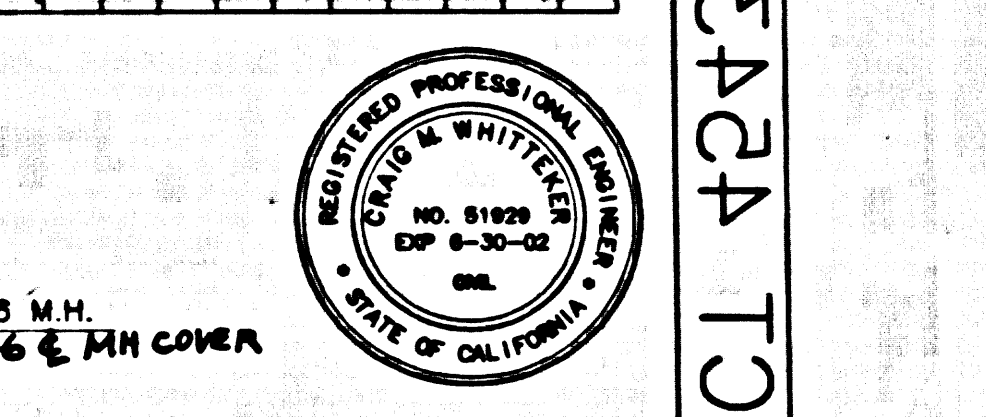
88211 .C.P. 20-22424 TRACT



SANITARY SEWER EASEMENT DATA

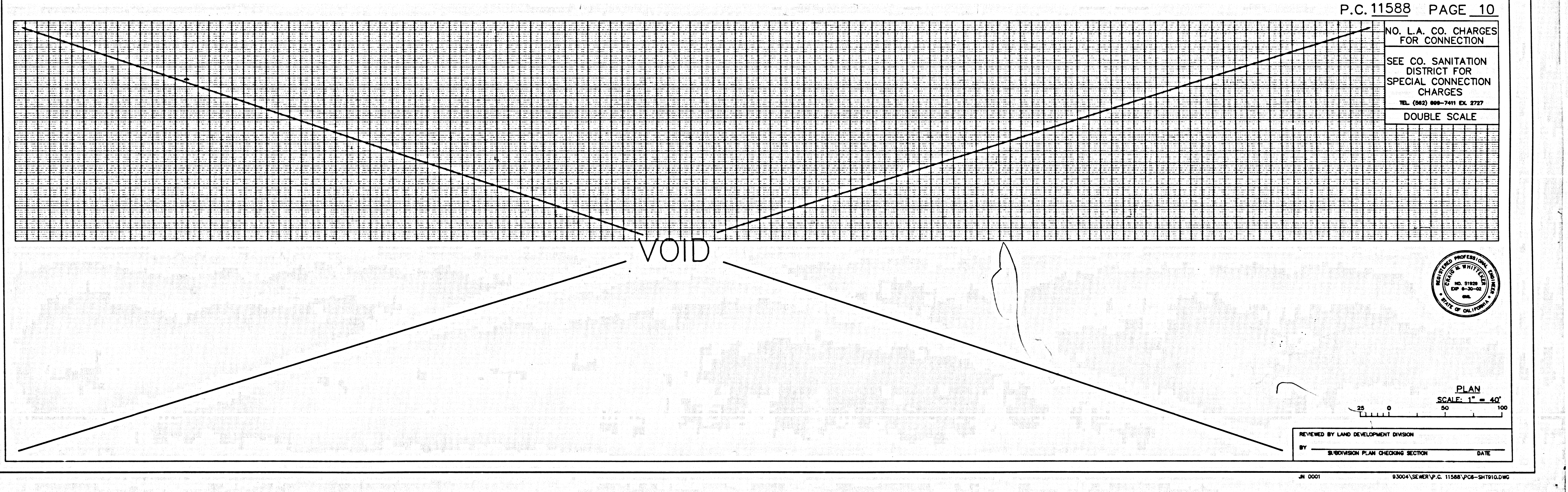
NO.	BEARING/Δ	RADIUS	LENGTH	TAN.
1	N 44°08'33" E	45.65'		
2	N 35°38'42" W	201.99'		
3	Δ=31°51'14"	130.00'	72.27'	37.10'
4	N 03°47'28" W		21.33'	
5	Δ=16°18'23"	110.00'	51.46'	15.76'
6	N 69°04'00" W		30.06'	
7	N 19°13'59" E		11.62'	
8	Δ=13°57'43"	140.00'	34.12'	17.14'
9	N 70°46'01" W		48.25'	
10	N 70°46'01" W		48.25'	
11	N 23°27'00" E		4.35'	
12	N 46°50'47" E		248.47'	
13	N 37°25'59" E		54.99'	
14	N 37°25'59" E		51.83'	
15	N 46°50'47" E		272.41'	
16	N 23°27'00" E		9.33'	
17	Δ=24°55'50"	130.00'	56.57'	28.74'
18	N 03°47'28" W		21.33'	
19	Δ=31°51'14"	110.00'	61.15'	31.39'
20	N 35°38'42" W		158.73'	
21	Δ=51°05'24"	50.00'	44.58'	23.90'

P.C.11588 PAGE 9
 NO. L.A. CO. CHARGES FOR CONNECTION
 SEE CO. SANITATION DISTRICT FOR SPECIAL CONNECTION CHARGES
 TEL. (862) 698-7411 EX. 2727
 DOUBLE SCALE
 35459

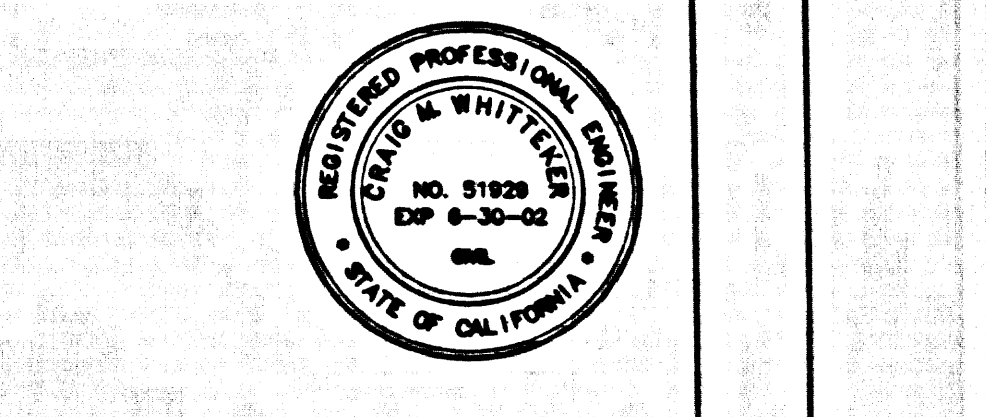


PLAN
 SCALE: 1" = 40'
 25 50 100

REVIEWED BY LAND DEVELOPMENT DIVISION
 BY M.D.S. DATE 11-2-01
 SUBDIVISION PLAN CHECKING SECTION



P.C.11588 PAGE 10
 NO. L.A. CO. CHARGES FOR CONNECTION
 SEE CO. SANITATION DISTRICT FOR SPECIAL CONNECTION CHARGES
 TEL. (862) 698-7411 EX. 2727
 DOUBLE SCALE



PLAN
 SCALE: 1" = 40'
 25 50 100

REVIEWED BY LAND DEVELOPMENT DIVISION
 BY SUBDIVISION PLAN CHECKING SECTION DATE

8828T.C.9-30-3324 TCART