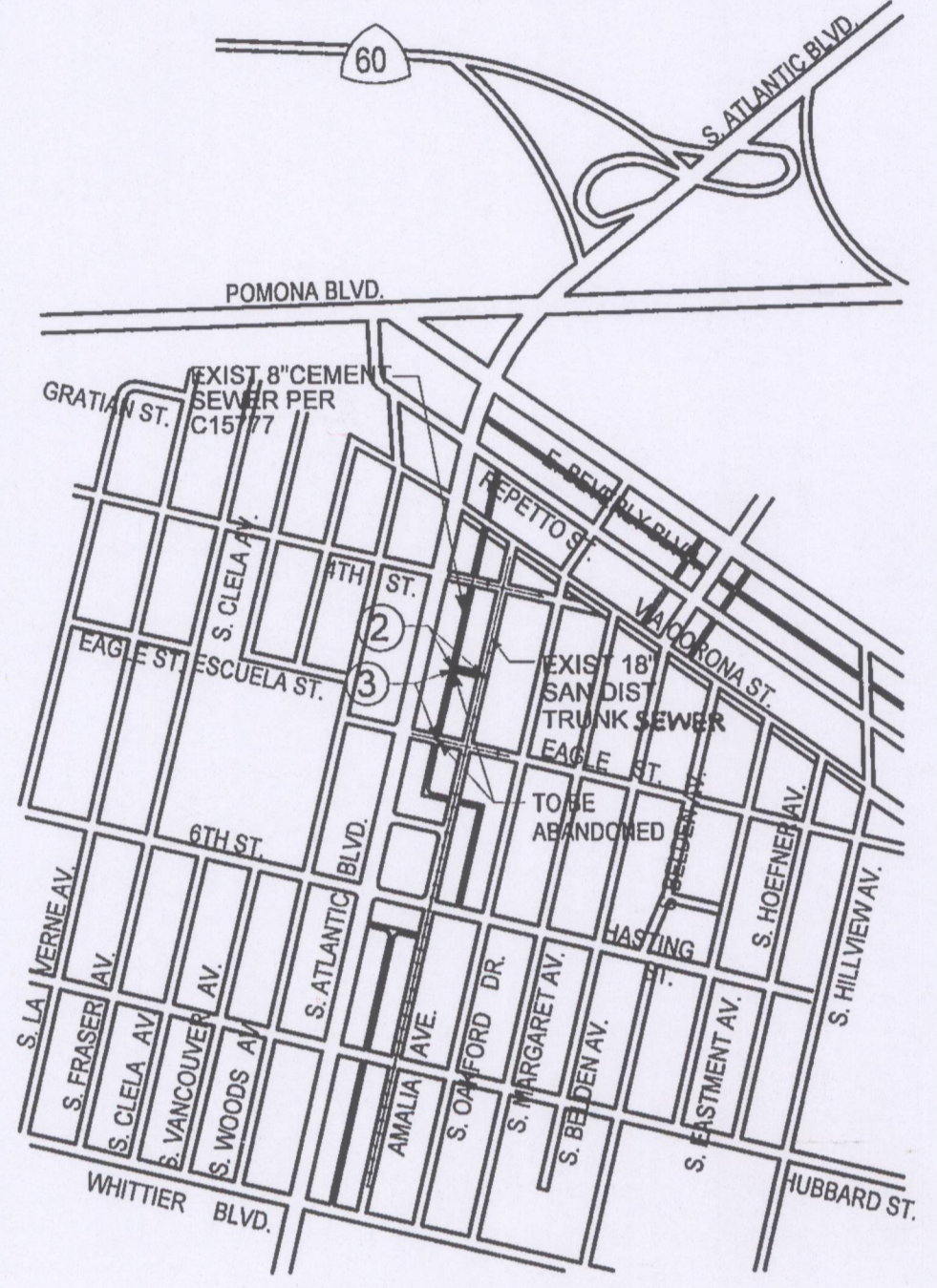


**BENCH MARKS**  
 BM NO. Y Y 10592 Elev. 214.702  
 FD. DPW BM TAG IN WEST CATCH BASIN 900MM SOUTH OF BCR @ SOUTHWEST CORNER OF 6TH ST. & LA VERNE 10.1M SOUTH & 5.8M WEST OF CENTERLINE INTERSECTION.  
 QUAD 1995



**INDEX MAP**  
 SCALE: 1"=600'  
 PC 11721  
 TRACT NO: 7192 & 7193  
 THOMAS GUIDE PAGE: 635 H-7  
 SMD INDEX: C-1914  
 NOTES: NUMBER IN CIRCLE INDICATES PAGE NUMBER  
 ALL MAINLINE SEWERS WITHIN SANITARY SEWER EASEMENTS

**STORMWATER POLLUTION CONTROL REQUIREMENTS FOR SEWER CONSTRUCTION**

- Eroded sediments and other pollutants must be retained on site and may not be transported from the site via sheet flow, swales, area drains, natural drainage courses, or wind.
- Stockpiles of earth and other construction related materials must be protected from being transported from the site by the forces of wind or water.
- Fuels, oils, solvents, and other toxic materials must be stored in accordance with their listing and are not to contaminate the soil and surface waters. All approved storage containers are to be protected from the weather. Spills must be cleaned up immediately and disposed of in a proper manner. Spills may not be washed into the drainage system.
- Excess or waste concrete may not be washed into the public way or any other drainage system. Provisions shall be made to retain concrete wastes on site until they can be disposed of as solid waste.
- Trash and construction-related solid wastes must be deposited into a covered receptacle to prevent contamination of rainwater and dispersal by wind.
- Sediments and other materials may not be tracked from the site by vehicle traffic. The construction entrance roadways must be stabilized so as to inhibit sediments from being deposited into the public way. Accidental depositions must be swept up immediately and may not be washed down by rain or other means.
- Any slopes with disturbed soils or denuded of vegetation must be stabilized so as to inhibit erosion by wind and water.

**SANITATION DISTRICTS OF LOS ANGELES COUNTY REQUIREMENTS**

- No connection for the disposal of industrial wastes shall be made to sewers shown on these drawings until a permit for industrial wastewater discharge has been issued by the County Sanitation District for said connections.
- Before breaking into or constructing a Sanitation District's sewer and prior to final acceptance of the project, a Sanitation District's inspector shall be notified by telephone at (626) 962-8605 so that required inspection can be made.

- STANDARD PLANS:**  
 THE FOLLOWING LATEST REVISED STANDARD PLANS ON FILE IN THE OFFICE OF THE FOLLOWING DEPARTMENT SHALL APPLY IN THE CONSTRUCTION OF THIS PROJECT.  
 LOS ANGELES COUNTY DEPARTMENT OF PUBLIC WORKS
- 2000-0 LEGEND FOR SANITARY SEWER PLANS AND PROFILES AND DISTRICT MAPS.
  - 2002-1 PRESENT CONCRETE SHALLOW MANHOLE
  - 2003-2 REINFORCED PRECAST CONCRETE MANHOLE
  - 2007-2 TRAP MANHOLE BASE
  - 2014-1 RECTANGULAR MANHOLE AND COVER
  - 2015-1 STANDARD MANHOLE STEP
  - 2016-1 TRAP MANHOLE CASTING
  - 2021-1 BEDDING FOR SEWER PIPE
  - 2023-2 CRADLING AND ENCASUREMENT
  - 2024-1 WYE OR TEE SUPPORT
  - 2027-0 ALLOWABLE TRENCH WIDTHS
  - 6008-1 MINIMUM PUBLIC SAFETY REQUIREMENTS

- AMERICAN PUBLIC WORKS ASSOCIATION**
- APWA 207-1 PRECAST REINFORCED CONCRETE MANHOLE BASE
  - APWA 208-1 BREAKING INTO EXISTING MANHOLES
  - APWA 210-2 MANHOLE FRAME AND COVER LOCKING TYPE
  - APWA 220-2 CHIMNEYS
  - APWA 221-1 PIPE ANCHORS AND BACKFILL STABILIZERS
  - APWA 222-1 HOUSE CONNECTION SEWER
  - APWA 223-1 HOUSE CONNECTION REMODELING

**MAINTAIN SEWER FLOW AT ALL TIMES DURING CONSTRUCTION**

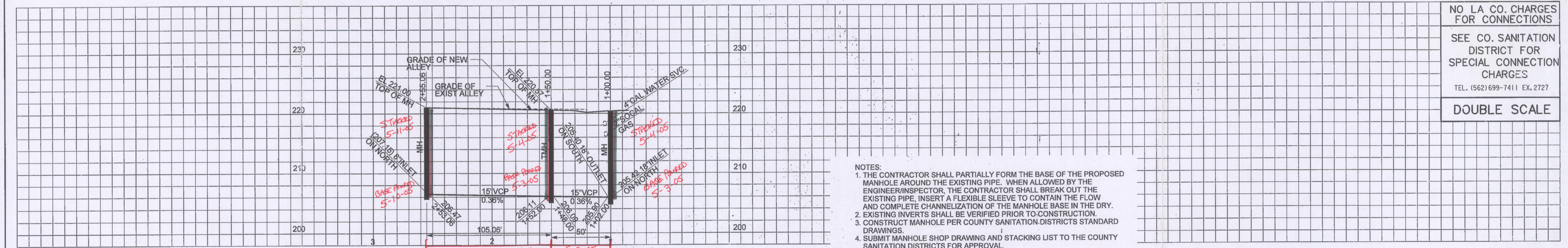
**PRIVATE CONTRACT SEWER GENERAL NOTES**

- A sewer construction permit shall be obtained and a fee paid for construction inspection and record plans to the Department of Public Works (DPW) at the Permit Counter, 900 South Fremont Avenue, 8th Floor, Alhambra, at least 72 hours prior to starting work under this permit. Copies of all other required permits, such as Road Excavation, Caltrans, etc., must be filed with the permit application.
- Prior to issuance of any permit, the Contractor shall file a permit for excavations and trenches from the State of California Division of Industrial Safety, and a Certificate of Worker's Compensation insurance with the DPW named as the Certificate Holder to notified thirty (30) days prior to beginning work.
- If work is done in a State Highway a permit must be obtained from the State of California Division of Highways, 120 South Spring Street, Los Angeles, California.
- When work is within a contract city, the Contractor must contact the Director of Public Works of that city, to determine the location to pay the inspection fee.
- The Contractor shall contact the district office listed on the "Application for Construction Permit" to arrange for an acceptable construction start date.
- Approval of this plan by the County of Los Angeles does not constitute a representation as to accuracy of the location of or the existence or non-existence of any underground utility pipe or structure within the limits of this project. This note applies to all pages.
- All work shall be in accordance with the latest approved edition of the "Standard Specifications for Public Works Construction", including supplements and the latest Special Provisions for the construction of Sanitary Sewer and shall be prosecuted only in the presence of the DPW.
- The Contractor's work shall conform to the "Safety Orders" section 7-0.4.1 of the Standard Specifications for Public Works Construction.
- Elevations are in feet above U.S.C. & G.S. sea level datum of 1929.
- No revisions shall be made in these plans without the approval of the Director of Public Works.
- No representative of the DPW will survey or layout any portion of the work.
- Grades to which this improvement is to be constructed are shown on plans and profiles. Grade points for top of curbs, centerline of streets, or centerline of alleys, are shown by circles on profiles at all points between designated points. The grade shall be established so as to conform to a straight line drawn between said designated points.
- The private engineer shall furnish the DPW with grade sheets and stationing for all house laterals and "Y" and "T" branches and shall provide stakes for them at their proper locations with stationing plainly marked. All house laterals shall be constructed in a straight alignment at right angles from the main line sewer except as shown on the plans. House laterals from chimneys shall not have an angle of less than 45 degrees with the M.L. sewer. Any change in alignment shall be requested in writing by the private engineer.
- The private engineer shall furnish the house lateral depth at the property line below the top of curb elevation for each house lateral on the grade sheet.
- An approved backwater valve is required when the pad is lower in elevation than the top of the next upstream manhole.

**CONSTRUCTION NOTES**

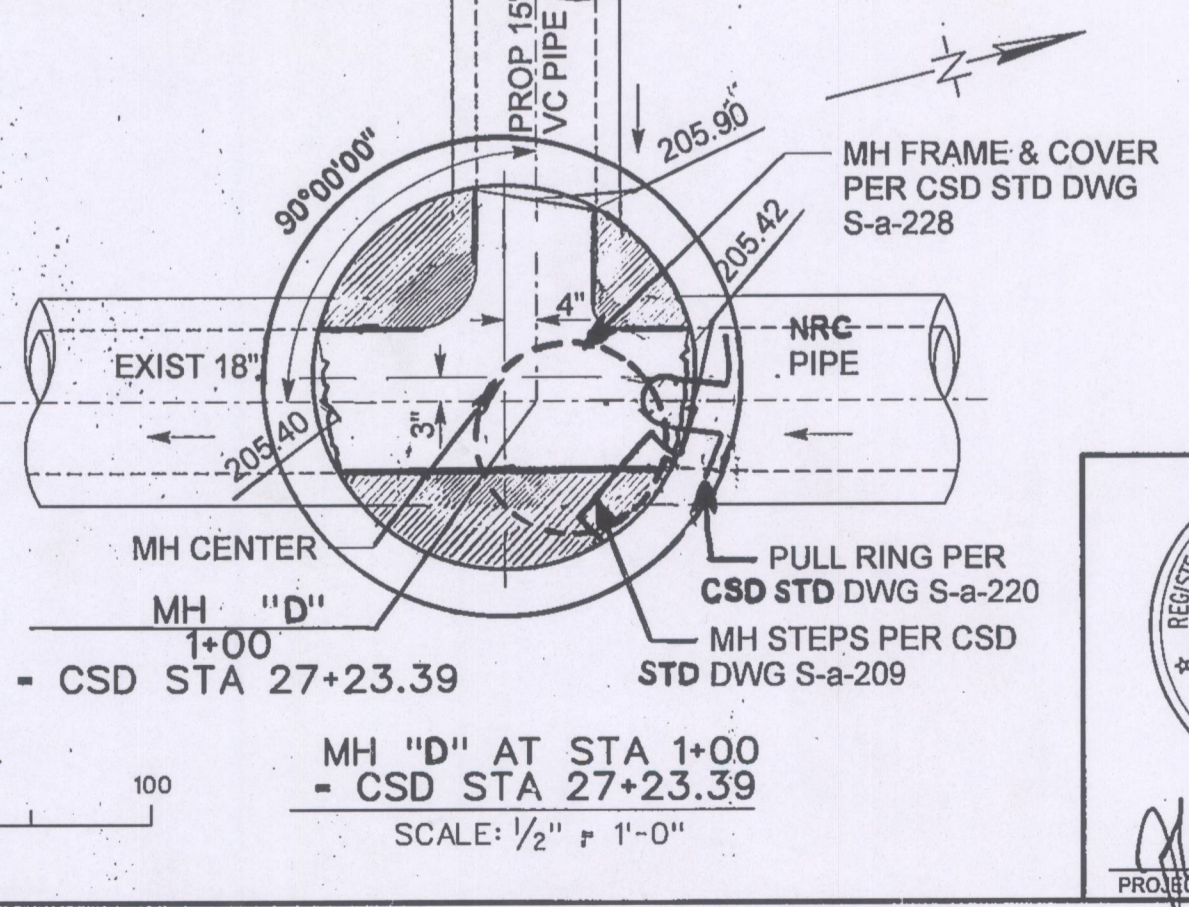
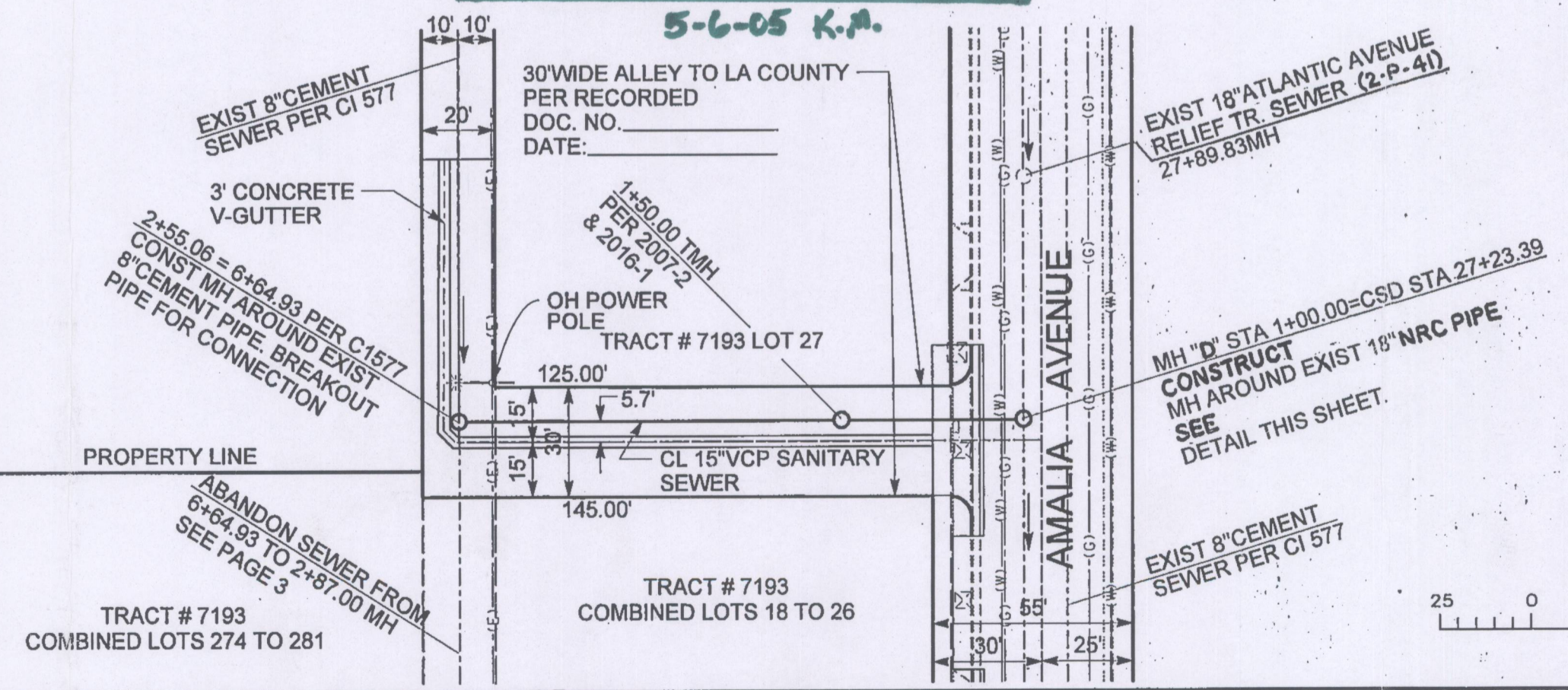
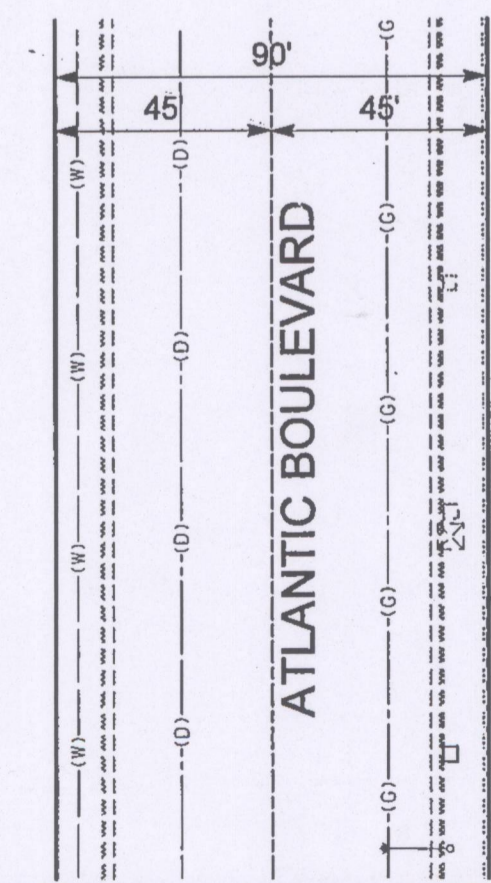
- Provide survey stakes on the property line or property lines produced at right angles to the sewer line at the centerline of each manhole
- Vitrified clay pipe joints shall be type "D" or "G" per "Standard Specifications for Public Works Construction" Section 208-2.
- If a powerpole is within three feet of the sewer, the sewer shall be encased per LACDPW standard plan S-23, case II, two feet on each side from the point of interference.
- All joints between cast iron pipe and vitrified clay shall be made with a rubber sleeve joint, type "D" (with bushing if necessary) per "Standard Specifications for Public Works Construction" Section 208-2.
- House laterals to be constructed with inverts at the property line 6 feet below curb grade except as noted.
- Wye or tee branches may be used for connections to the mainline sewers except as noted.
- If during the course of construction, it is determined that there is less than four feet of cover over the top of a mainline or house lateral V.C.P. sewer which is not indicated on the plans, the pipes shall be encased per LACDPW standard plan S-23, case II, unless otherwise approved by the director of Public Works.
- All structures shall be either brick sewer manholes per LACDPW standard plan S-3 (APWA 203-0) or precast concrete sewer manholes per LACDPW standard plan S-36 (APWA 200-2), or reinforced precast concrete manhole per LACDPW standard plan S-6, except as noted.
- Resurface all trenches within paved areas to meet Los Angeles County Public Works or California State Highway requirements in accordance with the permits.
- Full compliance with section 306-1.3.4. of the "Standard Specifications for Public Works Construction" will be required for backfill in street. Certification of backfill compaction and sand equivalents by a qualified civil engineer shall be provided by the permittee prior to the issuance of a certificate of partial acceptance.
- All backfill and fills outside of the street right of way shall be compacted to 90% of the maximum density as determined by ASTM soil compaction test D 1557-78 method "D" unless otherwise specified. This shall be certified by a qualified civil engineer. This certification shall be submitted to the Construction Division of the Department of Public Works prior to the acceptance of the work by the county.
- Manhole tops in unpaved rights of way to be six inches above finished grade.
- Sewers to be tested for leakage per section 306-1/4 of the "Standard Specifications for Public Works Construction" and "Standard Specifications and Special Provisions for the Construction of Sanitary Sewers."
- Manhole tops in improved rights of way to be even with finished grade.
- All wyes and/or house laterals are to be located at least 5' apart and when possible not closer than 5' to any manhole.

NO.	REVISION	REVISED BY	APPROVED BY	DATE



NO LA CO. CHARGES FOR CONNECTIONS  
 SEE CO. SANITATION DISTRICT FOR SPECIAL CONNECTION CHARGES  
 TEL. (562) 699-7411 EX. 2727  
**DOUBLE SCALE**

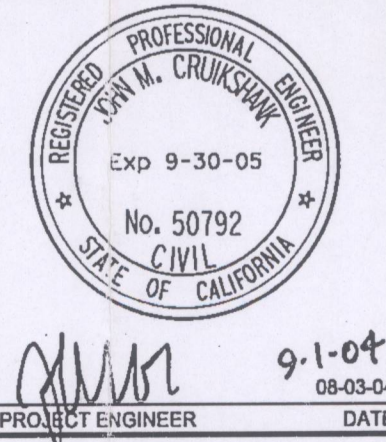
- NOTES:**
- THE CONTRACTOR SHALL PARTIALLY FORM THE BASE OF THE PROPOSED MANHOLE AROUND THE EXISTING PIPE. WHEN ALLOWED BY THE ENGINEER/INSPECTOR, THE CONTRACTOR SHALL BREAK OUT THE EXISTING PIPE, INSERT A FLEXIBLE SLEEVE TO CONTAIN THE FLOW AND COMPLETE CHANNELIZATION OF THE MANHOLE BASE IN THE DRY.
  - EXISTING INVERTS SHALL BE VERIFIED PRIOR TO CONSTRUCTION.
  - CONSTRUCT MANHOLE PER COUNTY SANITATION DISTRICTS STANDARD DRAWINGS.
  - SUBMIT MANHOLE SHOP DRAWING AND STACKING LIST TO THE COUNTY SANITATION DISTRICTS FOR APPROVAL.



**SANITARY SEWER PLAN IN PC NO. 11721**  
**EX. ALLEY & AMALIA AVE. N/O EAGLE ST. & W/O AMALIA**

REVIEWED BY LAND DEVELOPMENT DIVISION  
 BY *[Signature]* 3/7/05  
 SUBDIVISION PLAN CHECKING SECTION DATE  
 COUNTY OF LOS ANGELES DEPARTMENT OF PUBLIC WORKS

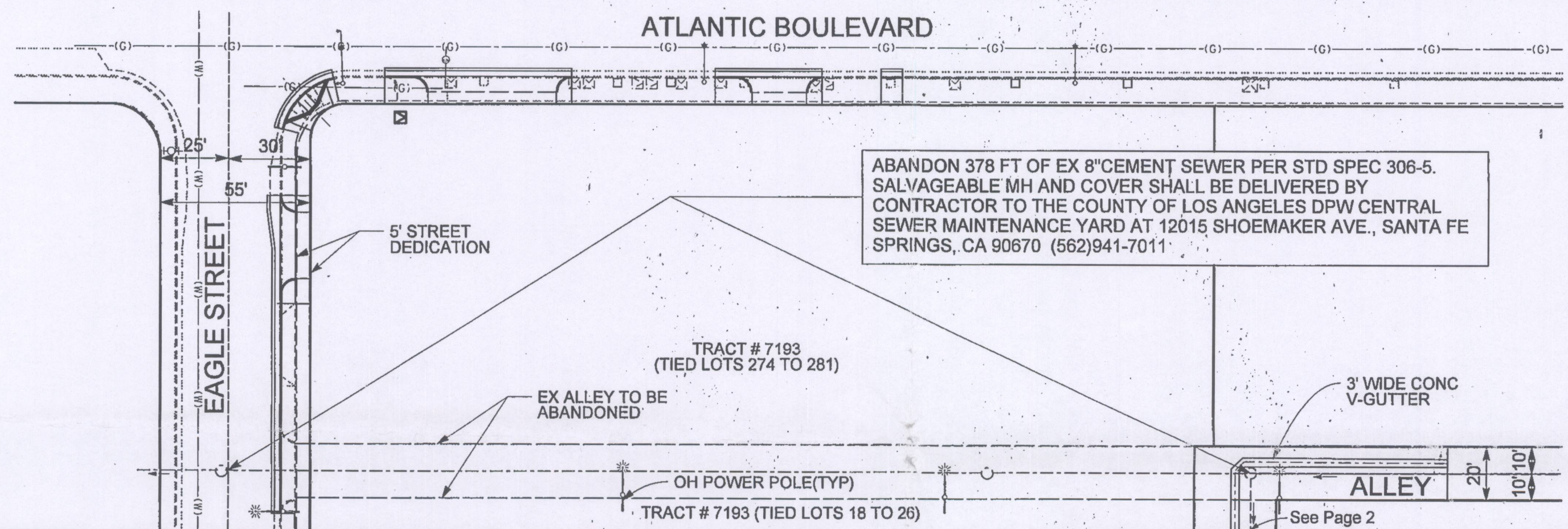
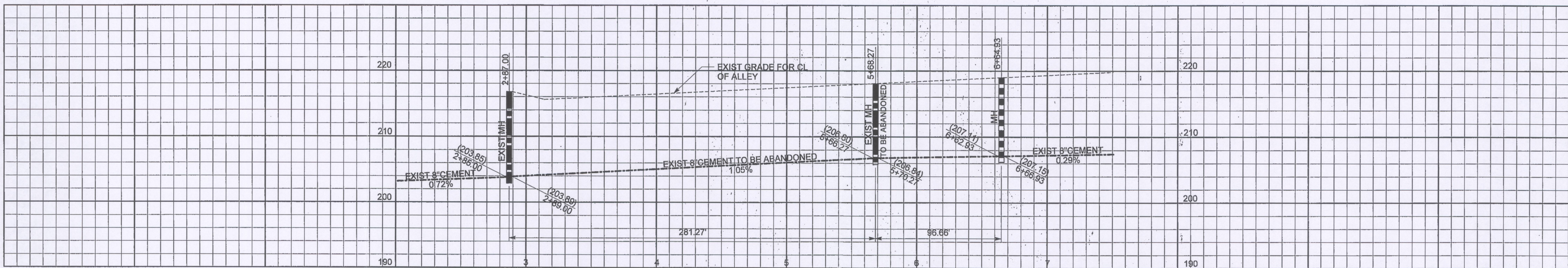
**JOHN M. CRUIKSHANK CONSULTANTS, INC.**  
 411 N. HARBOR BLVD., SUITE 201  
 SAN PEDRO, CA 90731  
 (310) 241-6550  
 john@jmc-2.com



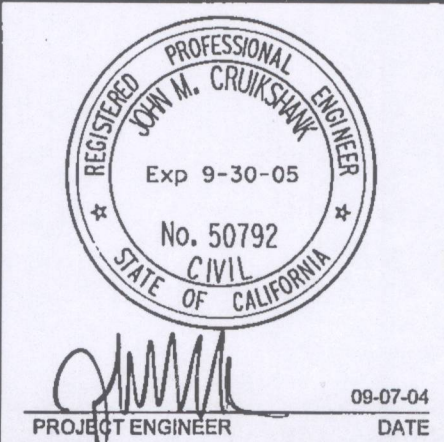
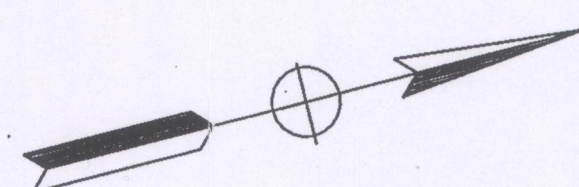
NO LA CO. CHARGES FOR CONNECTIONS

SEE CO. SANITATION DISTRICT FOR SPECIAL CONNECTION CHARGES  
TEL. (562) 699-7411 EX. 2727

DOUBLE SCALE



ABANDON 378 FT OF EX 8" CEMENT SEWER PER STD SPEC 306-5. SALVAGEABLE MH AND COVER SHALL BE DELIVERED BY CONTRACTOR TO THE COUNTY OF LOS ANGELES DPW CENTRAL SEWER MAINTENANCE YARD AT 12015 SHOEMAKER AVE., SANTA FE SPRINGS, CA 90670 (562)941-7011.



PLAN  
SCALE: 1" = 40'

REVIEWED BY LAND DEVELOPMENT DIVISION  
BY *J. Howard* 3/7/05

**VOID**

11721-3  
11721-3  
11721-3