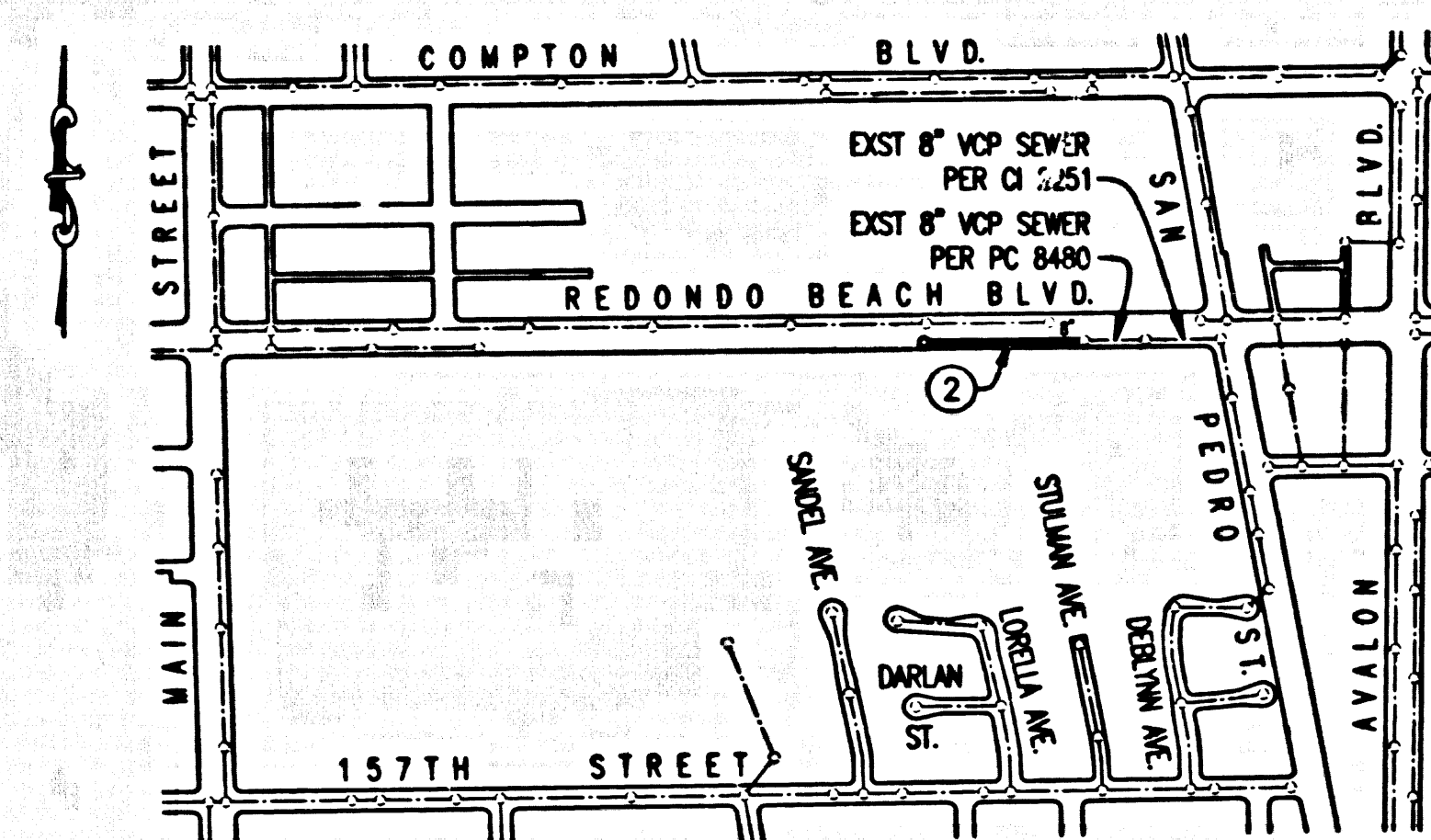


**CITY OF LOS ANGELES BENCH MARK**  
 BM 21-03995 ELEV. 77.968  
 WIRE SPK IN E CURB AVALON BLVD;  
 24.8 FEET S OF BC CURB RETURN S  
 OF REDONDO BEACH BLVD. (1985)



**INDEX MAP**  
 SCALE: 1" = 800' INDEX S-1702  
 P.C. 11738  
 THOMAS GUIDE PAGE: 734 D-5

NO.	REVISION	REVISED BY	APPROVED BY	DATE

**STORMWATER POLLUTION CONTROL REQUIREMENTS FOR SEWER CONSTRUCTION**

1. Erosion sediments and other pollutants must be retained on site and may not be transported from the site via sheet flow, swales, area drains, natural drainage courses, or wind.
2. Stockpiles of earth and other construction related materials must be protected from being transported from the site by the forces of wind or water.
3. Fuels, oils, solvents, and other toxic materials must be stored in accordance with their listings and are not to contaminate the soil and surface waters. All approved storage containers are to be protected from the weather. Spills must be cleaned up immediately and disposed of in a proper manner. Spills may not be washed into the drainage system.
4. Excess or waste concrete may not be washed into the public way or any other drainage system. Provisions shall be made to retain concrete wastes on site until they can be disposed of as solid waste.
5. Trash and construction-related solid wastes must be deposited into a covered receptacle to prevent contamination of rainwater and dispersal by wind.
6. Sediments and other materials may not be tracked from the site by vehicle traffic. The construction entrance roadways must be stabilized so as to inhibit sediments from being deposited into the public way. Accidental depositions must be swept up immediately and may not be washed down by rain or other means.
7. Any slopes with disturbed soils or denuded of vegetation must be stabilized so as to inhibit erosion by wind and water.

- |   |   |
|---|---|
| CA001 - DEWATERING OPERATIONS               | ES001 - SCHEDULING                          |
| CA002 - PAVING OPERATIONS                   | ES002 - PRESERVATION OF EXISTING VEGETATION |
| CA003 - STRUCTURE CONSTRUCTION AND PAINTING | ES010 - SEEDING AND PLANTING                |
| CA010 - MATERIAL DELIVERY AND STORAGE       | ES011 - MULCHING                            |
| CA020 - SOIL WASTE MANAGEMENT               | ES020 - GEOTEXTILES AND MATS                |
| CA021 - HAZARDOUS WASTE MANAGEMENT          | ES021 - DUST CONTROLS                       |
| CA022 - CONCRETE WASTE MANAGEMENT           | ES022 - TEMPORARY STREAM CROSSING           |
| CA024 - SANITARY/SEPTIC WASTE MANAGEMENT    | ES023 - CONSTRUCTION ROAD STABILIZATION     |
| CA030 - VEHICLE AND EQUIPMENT CLEANING      | ES024 - STABILIZED CONSTRUCTION ENTRANCE    |
| CA031 - VEHICLE AND EQUIPMENT FUELING       | ES034 - STORM DRAIN INLET PROTECTION        |
| CA032 - VEHICLE AND EQUIPMENT MAINTENANCE   |   |

**STANDARD PLANS:**  
 THE FOLLOWING LATEST REVISED STANDARD PLANS ON FILE IN THE OFFICE OF THE FOLLOWING DEPARTMENT SHALL APPLY IN THE CONSTRUCTION OF THIS PROJECT.

<b>LOS ANGELES COUNTY DEPARTMENT OF PUBLIC WORKS</b>	<b>AMERICAN PUBLIC WORKS ASSOCIATION</b>
2000-2 LEGEND FOR SANITARY SEWER PLANS AND PROFILES AND DISTRICT MAPS	2014 - PRECAST REINFORCED CONCRETE MANHOLE BASE
2002-1 PRECAST CONCRETE SHALLOW MANHOLE	210-2 24" MANHOLE FRAME AND COVER LOCKING TYPE
2003-2 REINFORCED PRECAST CONCRETE MANHOLE	222-1 HOUSE CONNECTION SEWER
2015-1 STANDARD MANHOLE STEP	
2021-1 BEDDING FOR SEWER PIPE	
2023-2 GRADING AND ENCASEMENT	
2024-1 WYE OR TEE SUPPORT	
2027-4 ALLOWABLE TRENCH WIDTHS	
2100-1 REQUIREMENTS FOR SANITARY SEWERS IN THE VICINITY OF PRESSURE WATER MAINS	
6008-1 MINIMUM PUBLIC SAFETY REQUIREMENTS	
2001-1 RECTANGULAR MANHOLE FRAME COVER	

**NOTES:**  
 NO CONNECTION FOR THE DISPOSAL OF INDUSTRIAL WASTES SHALL BE MADE TO SEWERS SHOWN ON THESE DRAWINGS UNTIL A PERMIT FOR INDUSTRIAL WASTE WATER DISCHARGE HAS BEEN ISSUED BY THE COUNTY SANITATION DISTRICTS FOR SAID CONNECTIONS.  
 BEFORE BREAKING INTO OR CONSTRUCTION ON A COUNTY SANITATION DISTRICT SEWER AND PRIOR TO FINAL ACCEPTANCE OF THE PROJECT, A COUNTY SANITATION DISTRICT INSPECTOR SHALL BE NOTIFIED BY PHONE (310) 638-1714 SO THAT REQUIRED INSPECTION CAN BE MADE.

**NOTICE TO CONTRACTOR:**  
 MAINTAIN SEWER FLOW AT ALL TIMES DURING CONSTRUCTION.

**PRIVATE CONTRACT SEWER GENERAL NOTES**

1. A sewer construction permit shall be obtained and a fee paid for construction inspection and record plans to the Department of Public Works at the Permit Counter, 900 South Front Street, 8th Floor, Alhambra, at least 72 hours prior to starting work under this permit. Copies of all of or required permits, such as Road Excavation, Caltrans, etc., must be filed with the permit application.
2. Prior to issuance of any permit, the contractor shall file a permit for excavations and trenches from the State of California Division of Industrial Safety, and a Certificate of Worker's Compensation insurance with the Department of Public Works named as the Certificate Holder. The Department of Public Works shall be notified 30 days prior to cancellation of the insurance policy.
3. If work is done in a State Highway, a permit must be obtained from the State of California Division of Highways, 120 South Spring Street, Los Angeles, California.
4. When work is within a contract city, the contractor must contact the Director of Public Works of that city, to determine the location to pay the inspection fee.
5. The contractor shall contact the district office listed on the "Application for Construction Permit" to arrange for an acceptable construction start date.
6. Approval of this plan by the County of Los Angeles does not constitute a representation as to accuracy of the location of or the existence or non-existence of any underground utility pipe or structure within the limits of this project. This note applies to all pages.
7. All work shall be in accordance with the latest approved edition of the "Standard Specifications for Public Works Construction", including supplements and the latest "Special Provisions for the Construction of Sanitary Sewer" and shall be prosecuted only in the presence of the Department of Public Works.
8. The contractor's attention is directed to Section 7-10.4.1 of the "Standard Specifications for Public Works Construction" in regard to safety orders and shall conform to the "Minimum Public Safety Requirements" as shown on Los Angeles Department of Public Works' standard plan 6008-1.
9. Elevations are in feet above U.S.C. & G.S. sea level datum of 1929.
10. No revisions shall be made in these plans without the approval of the Director of Public Works.
11. No representative of the Department of Public Works will survey or lay out any portion of the work.
12. Grades to which this improvement is to be constructed are shown on plans and profiles. Grade points for top of curbs, centerline of streets, or centerline of alleys, are shown by circles on profiles at all points between said designed points. The grade shall be established so as to conform to a straight line drawn between said design points.
13. The private engineer shall furnish the Department of Public Works with grade sheets and stationing for all house laterals and "Y" or "T" branches and shall provide stakes for them at their proper locations with stationing plainly marked. All house laterals shall be constructed in a straight alignment at right angles from the main line sewer except as shown on the plans. House laterals from chimneys shall not have an angle of less than 45 degrees with the M.L. sewer. Any change in alignment shall be requested in writing by the private engineer.
14. The private engineer shall furnish the house lateral depth at the property line below the top of curb elevation for each house lateral on the grade sheet.
15. An approved backwater valve is required when the pad is lower in elevation than the top of the next upstream manhole.

**CONSTRUCTION NOTES**

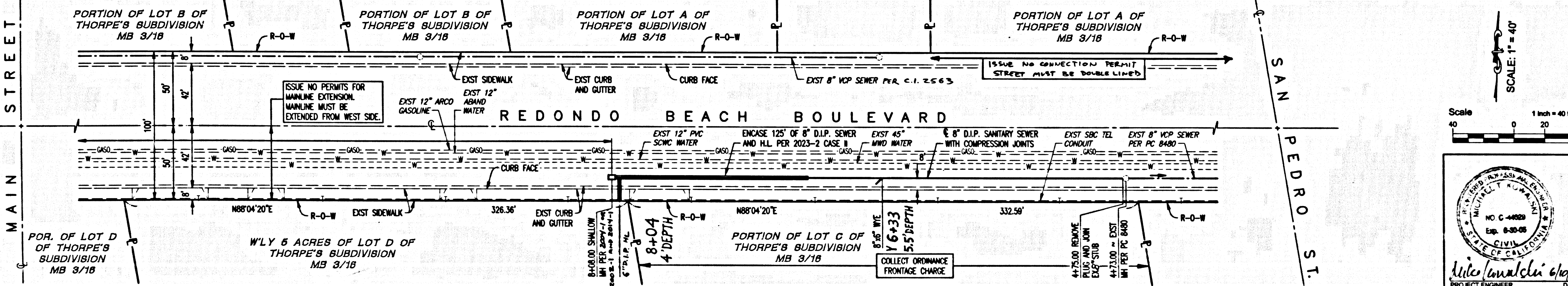
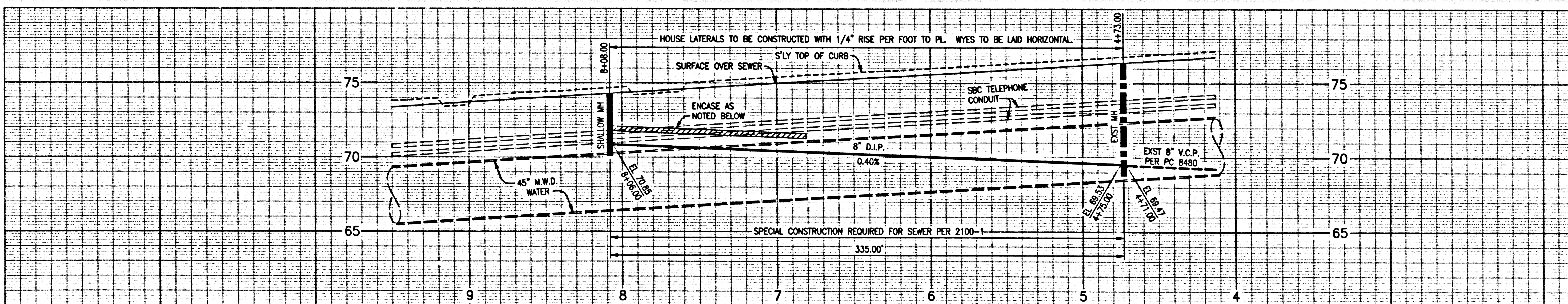
1. Provide survey stakes on the property line or property lines produced at right angles to the sewer line at the centerline of each manhole.
2. Verified clay pipe joints shall be type "D" or "G" per "Standard Specifications for Public Works Construction" Section 208-2.
3. If a manhole is within three feet of the sewer, the sewer shall be encased per LACDPW standard plan 2023-2, Case II, two feet on each side from the point of interference.
4. All joints between cast iron pipe and verified clay shall be made with a rubber sleeve joint, type "D" (with bushing if necessary) per "Standard Specifications for Public Works Construction" Section 208-2.
5. House laterals to be constructed with inverts at the property line 6 feet below curb grade except as noted.
6. Wye or tee branches may be used for connections to the mainline sewers except as noted.
7. If during the course of construction, it is determined that there is less than four feet of cover over the top of a manhole or house lateral V.C.P. sewer which is not indicated on the plans, the pipes shall be encased per LACDPW standard plan 2023-2, Case II, unless otherwise approved by the Director of Public Works.
8. All structures shall be either brick sewer manholes per LACDPW standard plan S-3 (APWA 203-0), or precast concrete sewer manholes per LACDPW standard plan S-36 (APWA 200-2), or reinforced precast concrete manhole per LACDPW standard plan 2003-2, except as noted.
9. Resurface all trenches within paved areas to meet Department of Public Works or California State Highway requirements in accordance with the permits.
10. Full compliance with Section 306-1.3.4. of the "Standard Specifications for Public Works Construction" will be required for backfill in street.
11. Certification of backfill, compaction, and sand equivalents by a qualified civil engineer shall be provided by the permittee prior to the issuance of a certificate of partial acceptance.
12. Manhole tops in unimproved rights of way to be six inches above finished grade.
13. Sewers to be tested for leakage per section 306-1.4 of the "Standard Specifications for Public Works Construction" and "Special Provisions for the Construction of Sanitary Sewer".
14. Manhole tops in improved rights of way to be level with finished grade.
15. All wyes and/or house laterals are to be located at least 5' apart and when possible not closer than 5' to any manhole.

PROFILE, ALIGNMENT, AND GRADE OF  
**SANITARY SEWERS**  
 TO BE CONSTRUCTED IN  
 REDONDO BEACH BOULEVARD  
 E/O S. MAIN ST. & W/O S. SAN PEDRO ST.  
 PC NO. 11738  
 SHEETS: 1 PAGES: 2  
 COUNTY OF LOS ANGELES CALIFORNIA  
 INDEX S-1702

JAMES A. NOYES DIRECTOR OF PUBLIC WORKS  
 APPROVED BY LAND DEVELOPMENT DIVISION  
 BY *Jenny Gentry* 6/14/04  
 ASSISTANT DIVISION ENGINEER DATE

APPROVED: COUNTY SANITATION DISTRICT  
 OF LOS ANGELES COUNTY  
 JAMES F. STAN, CHIEF ENGINEER AND GENERAL MANAGER 56209  
 COUNTY SANITATION DISTRICT NO. 8  
 BY *J. Stan* DATE 6/14/04  
 OFFICE ENGINEER

**PRIVATE ENGINEERS NOTICE TO CONTRACTORS:**  
 THE EXISTENCE AND LOCATION OF ANY UNDERGROUND UTILITY PIPES OR STRUCTURES SHOWN ON THESE PLANS IS REQUIRED BY A SEARCH OF AVAILABLE RECORDS TO THE BEST OF OUR KNOWLEDGE. THERE ARE NO EXISTING UTILITIES EXCEPT AS SHOWN ON THIS MAP. THE CONTRACTOR IS REQUIRED TO TAKE PRECAUTIONARY MEASURES TO PROTECT THE UTILITY LINES SHOWN AND ANY OTHER LINES NOT OF RECORD OR NOT SHOWN ON THIS DRAWING. PRIOR TO EXCAVATION THE CONTRACTOR SHALL CALL TOLL FREE TELEPHONE LINES. THE CONTRACTOR SHALL ALSO CALL MR. RAY CLUMMINGS OF GENERAL TELEPHONE COMPANY AT 1-800-948-4811 SO THAT THEY CAN MARK THE LOCATION OF UNDERGROUND TELEPHONE LINES.  
 BY *Mike Kowalski* HORG 6/14/04  
 PROJECT ENGINEER RCE NO DATE



P.C.11738 PAGE 2  
 COLLECT CHARGES AS INDICATED  
 SEE CO. SANITATION DISTRICT FOR SPECIAL CONNECTION CHARGES  
 TEL. (562) 699-7411 EX. 2727

56210  
 SCALE: 1" = 40'

**SANITARY SEWER PLANS IN REDONDO BEACH BLVD.**  
 E/O S. MAIN STREET & W/O S. SAN PEDRO STREET - PC 11738  
 REVIEWED BY LAND DEVELOPMENT DIVISION  
 BY *J. Stan* 6/14/04  
 COUNTY OF LOS ANGELES DEPARTMENT OF PUBLIC WORKS  
 PLANS PREPARED BY:  
**MKA** Mike Kowalski & Associates  
 Consulting Civil Engineers  
 122 N. Harbor Blvd., Suite 204  
 Fullerton, California 92832  
 714.446.9302 fax 714.441.2902

REDONDO BEACH BLVD. BC 11138