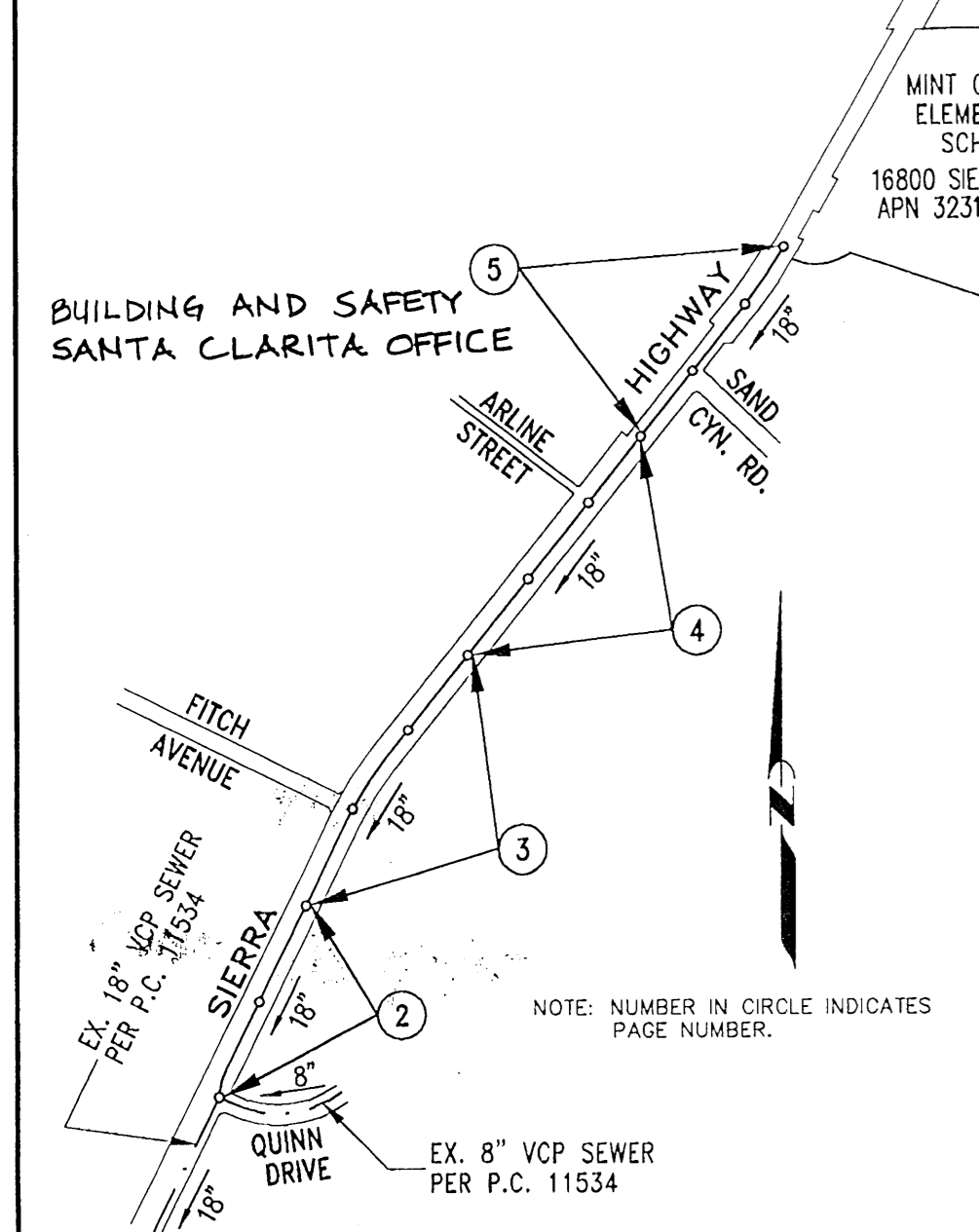


1 008ft .C.9 J00H028 YPATNEMELEJ NOYMA3 TMM-YAWHGH APR2012

BENCH MARKS L 5226
DPW BM TAG IN W CB SIERRA HWY 12.8M W/O C/L & 13.4M N/O CONC DRWY TO STORAGE BLDG #17175 1.8M N/O PP #1443621E
NEWHALL QUAD 1995 ELEVATION: 1593.921



MINT CANYON ELEMENTARY SCHOOL
16800 SIERRA HWY.
APN 3231-9-902

CITY OF SANTA CLARITA DISCHARGE APPROVAL ONLY

REVISION A 5/31/05

ROBERT G. NEWMAN DIRECTOR OF TRANSPORTATION AND ENGINEERING SERVICES DATE 4.5.05

ISSUE NO H.L. PERMITS UNTIL P.C. 11534 IS ACCEPTED FOR PUBLIC USE.

NO CONNECTION FOR THE DISPOSAL OF INDUSTRIAL WASTES SHALL BE MADE TO SEWERS SHOWN ON THESE DRAWINGS UNTIL A PERMIT FOR INDUSTRIAL WASTEWATER DISCHARGE HAS BEEN ISSUED BY THE SANITATION DISTRICTS FOR THE SAID CONNECTION

BEFORE BREAKING INTO OR CONSTRUCTING A SANITATION DISTRICTS' SEWER AND PRIOR TO FINAL ACCEPTANCE OF THE PROJECT, A SANITATION DISTRICTS' INSPECTOR SHALL BE NOTIFIED BY PHONE AT (626) 362-8605 SO THAT REQUIRED INSPECTION CAN BE MADE.

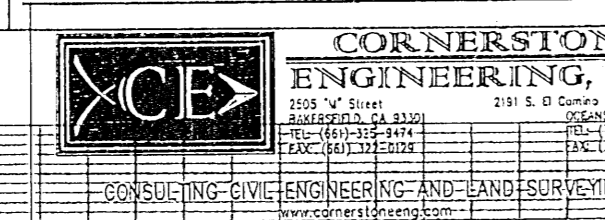
- ADDITIONAL CONSTRUCTION NOTES:**
- Contractor to coat outside of all sanitary sewer manholes with waterproof membranes on Sierra Hwy.
 - All sanitary sewer manhole on Sierra Hwy frames and covers shall be watertight.
 - All joints are to be mechanical compression joints.

SIERRA HIGHWAY, MINT CANYON ELEMENTARY SCHOOL - P.C. 11800
THOMAS GUIDE PAGE: 4462/CS-C6

NO.	REVISION	REVISED BY	APPROVED BY	DATE
1	6" house lateral added on page 5	Consentene Eng. Demill Whitten P.E. #C-051930	[Signature]	8/31/05
2	REVISED STD. PLAN LIST	[Signature]	[Signature]	9/26/05

MAINTAIN SEWER FLOW IN P.C. 11534 AT ALL TIMES DURING CONSTRUCTION.

Revision A by:



STORM WATER POLLUTION CONTROL REQUIREMENTS FOR SEWER CONSTRUCTION

- Eroded sediments and other pollutants must be retained on site and may not be transported from the site via sheet flow, swales, area drains, natural drainage courses, or wind.
- Stockpiles of earth and other construction related materials must be protected from being transported from the site by the forces of wind or water.
- Fuels, oils, solvents, and other toxic materials must be stored in accordance with their listing and are not to contaminate the soil and surface waters. All approved storage containers are to be protected from the weather. Spills must be cleaned up immediately and disposed of in a proper manner. Spills may not be washed into the drainage system.
- Excess or waste concrete may not be washed into the public way or any other drainage system. Provisions shall be made to retain concrete wastes on site until they can be disposed of as solid waste.
- Trash and construction-related solid wastes must be deposited into a covered receptacle to prevent contamination of rainwater and dispersed by wind.
- Sediments and other materials may not be tracked from the site by vehicle traffic. The construction entrance roadways must be stabilized so as to inhibit sediments from being deposited into the public way. Accidental depositions must be swept up immediately and may not be washed down by rain or other means.
- Any slopes with disturbed soils or denuded of vegetation must be stabilized so as to inhibit erosion by wind and water.

- LEGEND FOR SANITARY SEWER PLANS AND PROFILES AND DISTRICT MAPS
- CA001 - Dewatering Operations
 - CA002 - PAVING OPERATIONS
 - CA003 - STRUCTURE CONSTRUCTION AND PAINTING
 - CA010 - MATERIAL DELIVERY AND STORAGE
 - CA020 - SOLID WASTE MANAGEMENT
 - CA021 - HAZARDOUS WASTE MANAGEMENT
 - CA023 - CONCRETE WASTE MANAGEMENT
 - CA030 - VEHICLE AND EQUIPMENT CLEANING
 - CA031 - VEHICLE AND EQUIPMENT FUELING
 - ESC01 - MULCHING
 - ESC20 - GEOTEXTILES AND MATS
 - ESC21 - DUST CONTROLS
 - ESC22 - TEMPORARY STREAM CROSSING
 - ESC23 - CONSTRUCTION ROAD STABILIZATION
 - ESC24 - STABILIZED CONSTRUCTION ENTRANCE
 - ESC25 - STORM DRAIN INLET PROTECTION
 - ESC10 - SEEDING AND PLANTING
 - ESC20 - GEOTEXTILES AND MATS
 - ESC21 - DUST CONTROLS
 - ESC22 - TEMPORARY STREAM CROSSING
 - ESC23 - CONSTRUCTION ROAD STABILIZATION
 - ESC24 - STABILIZED CONSTRUCTION ENTRANCE
 - ESC25 - STORM DRAIN INLET PROTECTION

STANDARD PLANS:
THE FOLLOWING LATEST REVISED STANDARD PLANS ON FILE IN THE OFFICE OF THE FOLLOWING DEPARTMENT SHALL APPLY IN THE CONSTRUCTION OF THIS PROJECT.

- LOS ANGELES COUNTY DEPARTMENT OF PUBLIC WORKS
- 2000-0 LEGEND FOR SANITARY SEWER PLANS AND PROFILES AND DISTRICT MAPS
 - 2003-2 REINFORCED PRECAST CONCRETE MANHOLE, MODIFIED; NO REDUCER RING-24" SHAFT TO COVER.
 - 2015-1 STANDING MANHOLE STEP
 - 2021-1 BEDDING FOR SEWER PIPE
 - 2023-2 CRADLING AND ENCASEMENT
 - 2024-1 WYE OR TEE SUPPORT
 - 2027-1 ALLOWABLE TRENCH WIDTHS
 - 6008-1 MINIMUM PUBLIC SAFETY REQUIREMENTS
- AMERICAN PUBLIC WORKS ASSOCIATION
- 207-1 PRECAST REINFORCED CONCRETE MANHOLE BASE
 - 208-1 BREAKING INTO EXISTING MANHOLES
 - 240-2 MANHOLE FRAME AND COVER-LOOKING TYPE
 - 222-1 HOUSE CONNECTION SEWER
 - 223-1 HOUSE CONNECTION REMODELING
 - 213-1 MANHOLE FRAME & COVER- PRESSURE TYPE
 - 212-1 ANCHOR SYSTEM FOR PRESSURE COVER

THIS SEWER PRIVATE CONTRACT ACCEPTED FOR PUBLIC USE

06.25.2006

COUNTY OF LOS ANGELES DEPARTMENT OF PUBLIC WORKS LAND DEVELOPMENT DIVISION

CONSTRUCTION NOTES: (cont'd)

- Sewers to be tested for leakage per section 306-1.4 of the "Standard Specifications for Public Works Construction" and "Special Provisions for the Construction of Sanitary Sewer."
- Manhole tops in improved rights of way to be level with finished grade.
- All wyes and/or house laterals are to be located at least 5' apart and when possible not closer than 5' to any manhole.

GENERAL NOTES:

- A sewer construction permit shall be obtained and a fee paid for construction inspection and record plans to the Department of Public Works at the Permit Counter, 900 South Fremont Avenue, 8th Floor, Alhambra, at least 72 hours prior to starting work under this permit. Copies of all other required permits, such as Road Excavation, Caltrans, etc., must be filed with the permit application.
- Prior to issuance of any permit, the contractor shall file a permit for excavations and trenches from the State of California Division of Industrial Safety, and a Certificate of Worker's Compensation Insurance with the Department of Public Works named as the Certificate Holder to be notified 30 days prior to completion of the project.
- If work is done in a State Highway, a permit must be obtained from the State of California Division of Highways, 120 South Spring Street, Los Angeles, California.
- When work is within a contract city, the contractor must contact the Director of Public Works of that city, to determine the location to pay the inspection fee.
- The contractor shall contact the district office listed on the "Application for Construction Permit" to arrange for an acceptable construction start date.
- Approval of this plan by the County of Los Angeles does not constitute a representation as to accuracy of the location of or the existence or non-existence of any underground utility pipe or structure within the limits of this project. This note applies to all pages.
- All work shall be in accordance with the latest approved edition of the "Standard Specifications for Public Works Construction", including supplements and the latest Special Provisions for the Construction of Sanitary Sewers and shall be prosecuted only in the presence of the Department of Public Works.
- The contractor's attention is directed to Section 7-10.4.1 of the Standard Specifications for Public Works Construction in regard to safety orders and shall conform to the "Minimum Public Safety Requirements" as shown on Los Angeles Department of Public Works' Standard 6008-1.
- Elevations are in feet above U.S.C. & G.S. sea level datum of 1929.
- No revisions shall be made in these plans without the approval of the Director of Public Works.
- No representative of the Department of Public Works will survey or lay out any portion of the work.
- Grades to which this improvement is to be constructed are shown on plans and profiles. Grade points for top of curbs, centerline of streets, or centerline of alleys, are shown by circles on profiles at all points between designated points. The grade shall be established so as to conform to a straight line drawn between said designated points.
- The private engineer shall furnish the Department of Public Works with grade sheets and stationing for all house laterals and "Y" or "T" branches and shall provide stakes for them at their proper locations with stationing plainly marked. All house laterals shall be constructed in a straight alignment at right angles from the main line sewer except as shown on the plans. House laterals from chimneys shall not have an angle of less than 45 degrees with the M.L. sewer. Any change in alignment shall be requested in writing by the private engineer.
- The private engineer shall furnish the house lateral depth at the property line below the top of curb elevation for each house lateral on the grade sheet.
- An approved backwater valve is required when the pad is lower in elevation than the top of the next upstream manhole.

CONSTRUCTION NOTES:

- Provide survey stakes on the property line or property lines produced at right angles to the sewer line at the centerline of each manhole.
- Vitrified clay pipe joints shall be type "D" or "G" per "Standard Specifications for Public Works Construction" Section 208-2.
- If a power pole is within three feet of the sewer, the sewer shall be encased per L.A.C.D.P.W. standard plan 2023-2, case II, two feet on each side from the point of interference.
- All joints between cast iron pipe and vitrified clay shall be made with a rubber sleeve joint, type "D" (with bushing if necessary) per "Standard Specifications for Public Works Construction" Section 208-2.
- House laterals to be constructed with inverts at the property line 6 feet below curb grade except as noted.
- Wye or tee branches may be used for connections to the mainline sewers except as noted.
- If during the course of construction, it is determined that there is less than four feet of cover over the top of a mainline or house lateral V.C.P. sewer which is not indicated on the plans, the pipes shall be encased per L.A.C.D.P.W. standard plan 2023-2, case II, unless otherwise approved by the director of Public Works.
- All structures shall be either brick sewer manholes per L.A.C.D.P.W. standard plan S-3 (A.P.W.A. 203-0) or precast concrete sewer manholes per L.A.C.D.P.W. standard plan S-36 (A.P.W.A. 200-2), or reinforced precast concrete manhole per L.A.C.D.P.W. standard plan 2003-2, except as noted.
- Resurface all trenches within paved areas to meet Los Angeles County Public Works or California State Highway requirements in accordance with the permits.
- Full compliance with section 305-1.3.4 of the standard specification will be required for backfill in street certification of backfill compaction and sand equivalents by a qualified civil engineer shall be provided by the permittee prior to the issuance of a certificate of partial acceptance.
- All backfill and fill outside of the street right of way shall be compacted to 90% of the maximum density as determined by ASTM soil compaction test D 1557-78 method "D" unless otherwise specified. This shall be certified by a qualified civil engineer. This certification shall be submitted to the Construction Division of the Department of Public Works prior to the acceptance of the work by the county.
- Manhole tops in unimproved rights of way to be six inches above finished grade.

RECORD PLANS

PROFILE, ALIGNMENT AND GRADE OF
SANITARY SEWERS
TO BE CONSTRUCTED IN
SIERRA HIGHWAY, MINT CANYON ELEMENTARY SCHOOL - P.C. 11800
INDEX - N-1459
3 SHEETS: 5 PAGES

COUNTY OF LOS ANGELES, CALIFORNIA

DONALD L. WOLFE ACTING DIRECTOR OF PUBLIC WORKS

APPROVED BY LAND DEVELOPMENT DIVISION

BY *Dennis Hunter* 3/18/05
ASSISTANT DIVISION ENGINEER DATE

SUBMITTED BY *[Signature]* 3/15/05
SUBDIVISION PLAN CHECKING SECTION DATE

APPROVED: COUNTY SANITATION DISTRICT
OF LOS ANGELES COUNTY, CALIFORNIA
JAMES F. STAHL - CHIEF ENGINEER and GENERAL MANAGER

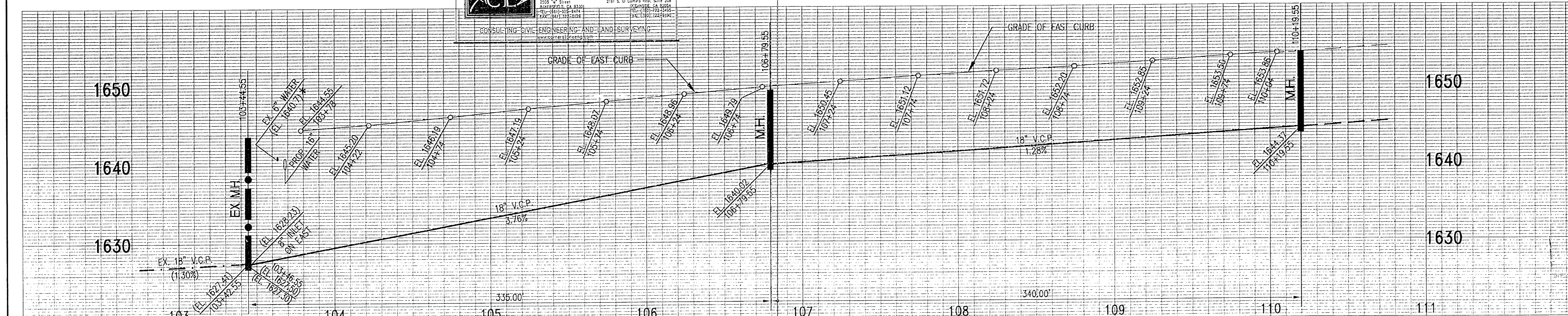
COUNTY SANITATION DISTRICT NO. 26

BY *[Signature]* DATE: 4/1/05
OFFICE ENGINEER

PRIVATE ENGINEERS NOTICE TO CONTRACTORS:

THE EXISTENCE AND LOCATION OF ANY UNDERGROUND UTILITY PIPES OR STRUCTURES SHOWN ON THESE PLANS IS REQUIRED BY A SEARCH OF AVAILABLE RECORDS TO THE BEST OF OUR KNOWLEDGE. THERE ARE NO EXISTING UTILITIES EXCEPT AS SHOWN ON THIS MAP. THE CONTRACTOR IS REQUIRED TO TAKE PRECAUTIONARY MEASURES TO PROTECT THE UTILITY LINES SHOWN AND ANY OTHER LINES NOT OF RECORD OR NOT SHOWN ON THIS DRAWING. PRIOR TO EXCAVATION THE CONTRACTOR SHALL CALL TOLL FREE 1-800-422-4133 TO VERIFY THE UNDERGROUND LOCATION OF GAS AND TELEPHONE LINES. THE CONTRACTOR SHALL ALSO CALL MR. RAY CUMMINGS OF GENERAL TELEPHONE COMPANY AT 1-805-948-4871 SO THAT THEY CAN MARK THE LOCATION OF UNDERGROUND TELEPHONE LINES.

PROJECT ENGINEER - R.C.E. NO. 54155 DATE

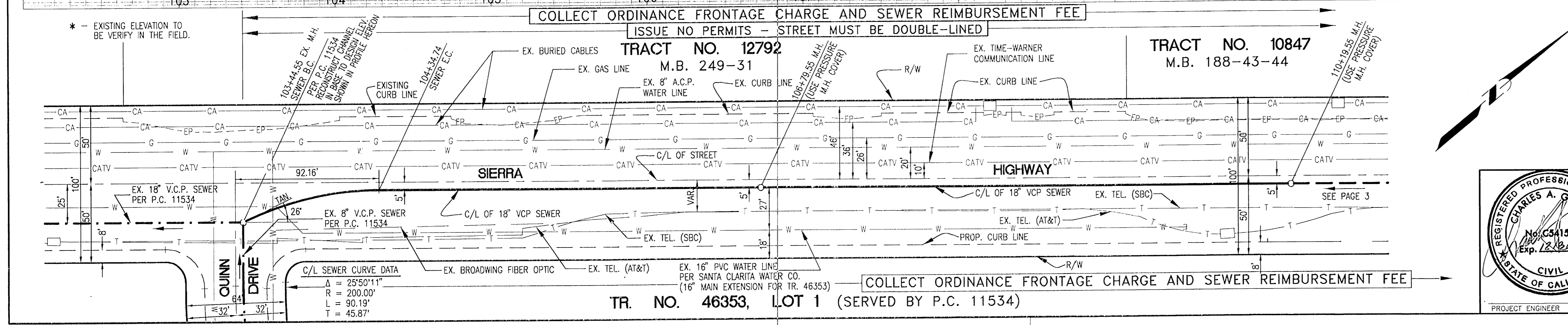


DOUBLE SCALE
COLLECT CHARGES AS INDICATED

SEE SAN. DISTRICTS FOR SPECIAL CONNECTION CHARGES (562) 699-7411 X-2727

RECORD PLANS

SCALE: VERT: 1" = 8'
HORIZ: 1" = 40'



SANITARY SEWER PLANS IN
SIERRA HIGHWAY - MINT CANYON ELEMENTARY SCHOOL P.C. NO. 11800

REVIEWED BY LAND DEVELOPMENT DIVISION

BY *[Signature]* 3/15/05
SUBDIVISION PLAN CHECKING SECTION DATE

COUNTY OF LOS ANGELES DEPARTMENT OF PUBLIC WORKS

LAND DESIGN CONSULTANTS, INC.
Land Planning, Civil Engineering, Surveying & Environmental Services

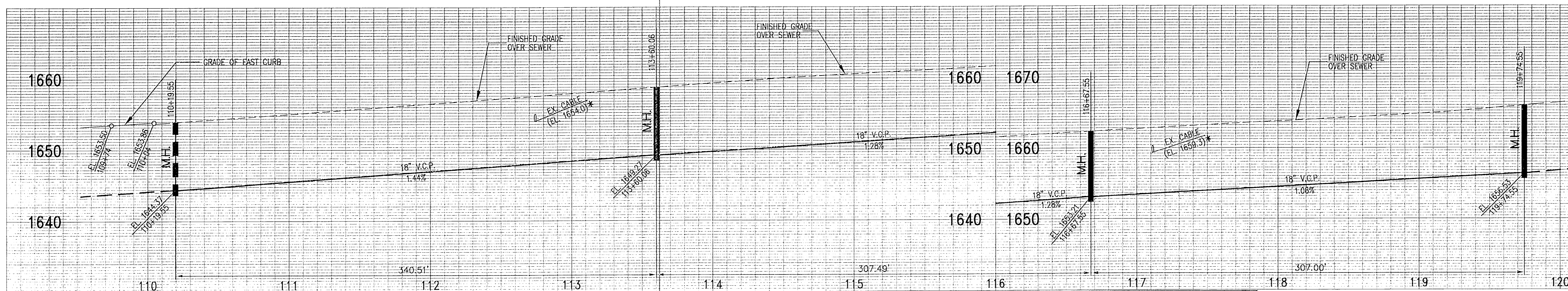
225 South Lake Avenue, Suite 600
Pasadena, Ca 91101
(626) 578-7000
ldc@ldccla.com

04033-001
PROJECT NO.

TR. NO. 46353, LOT 1 (SERVED BY P.C. 11534)

COLLECT ORDINANCE FRONTAGE CHARGE AND SEWER REIMBURSEMENT FEE

DOUBLE SCALE
COLLECT CHARGES
AS INDICATED
SEE SAN. DISTRICTS
FOR SPECIAL
CONNECTION CHARGES
(562) 699-7411 X-2727

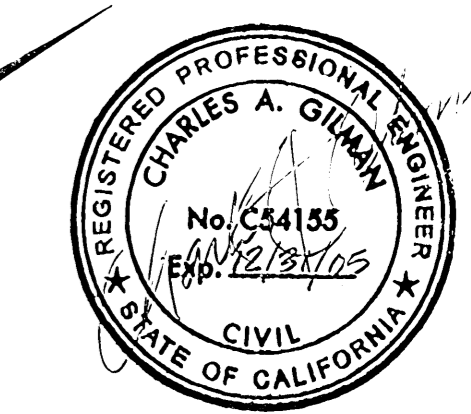
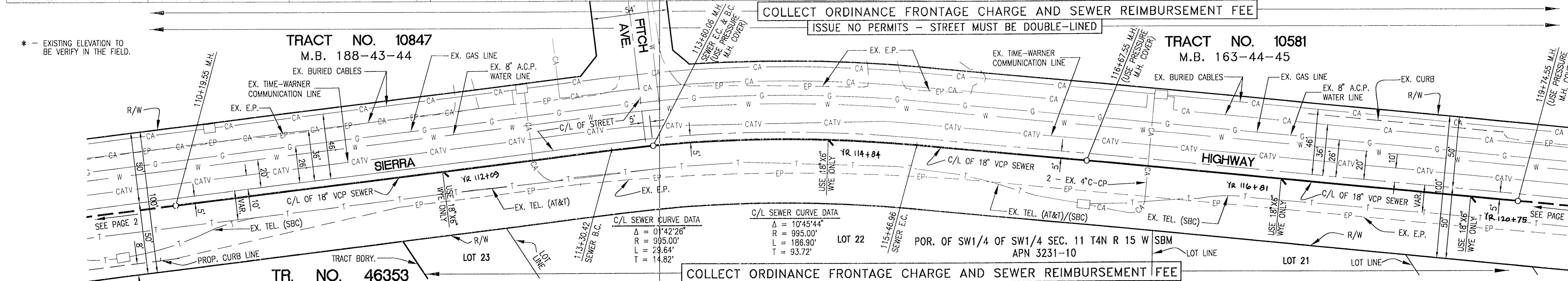


RECORD PLANS

* - EXISTING ELEVATION TO BE VERIFY IN THE FIELD.

TRACT NO. 10847
M.B. 188-43-44

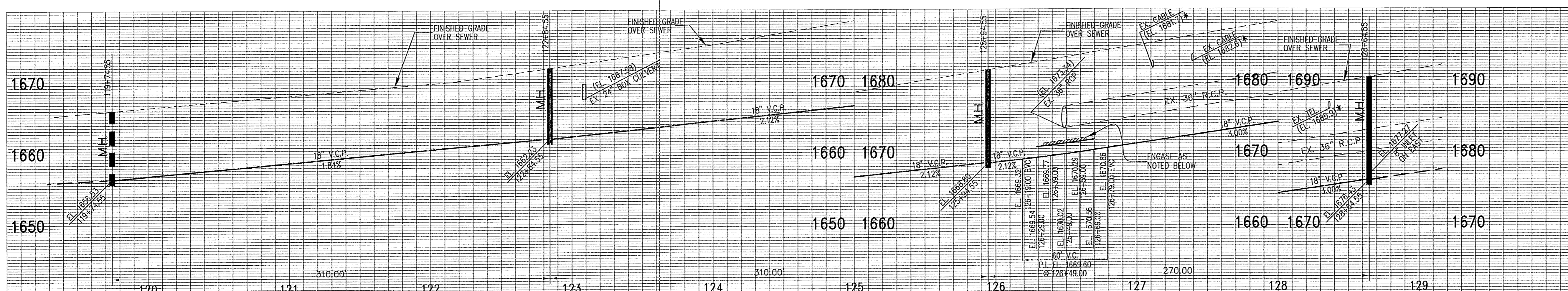
TRACT NO. 10581
M.B. 163-44-45



SCALE: VERT: 1" = 8'
HORIZ: 1" = 40'
20 0 40 80

REVIEWED BY LAND DEVELOPMENT DIVISION
BY [Signature] 3/15/05
SUBDIVISION PLAN CHECKING SECTION DATE

DOUBLE SCALE
COLLECT CHARGES
AS INDICATED
SEE SAN. DISTRICTS
FOR SPECIAL
CONNECTION CHARGES
(562) 699-7411 X-2727

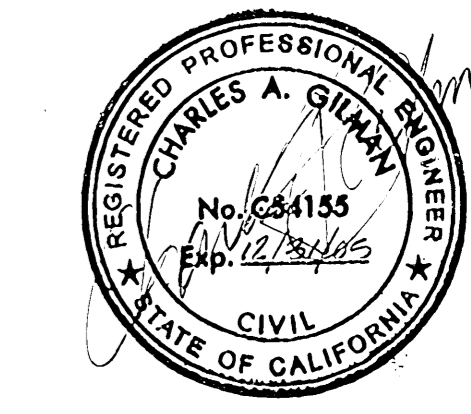
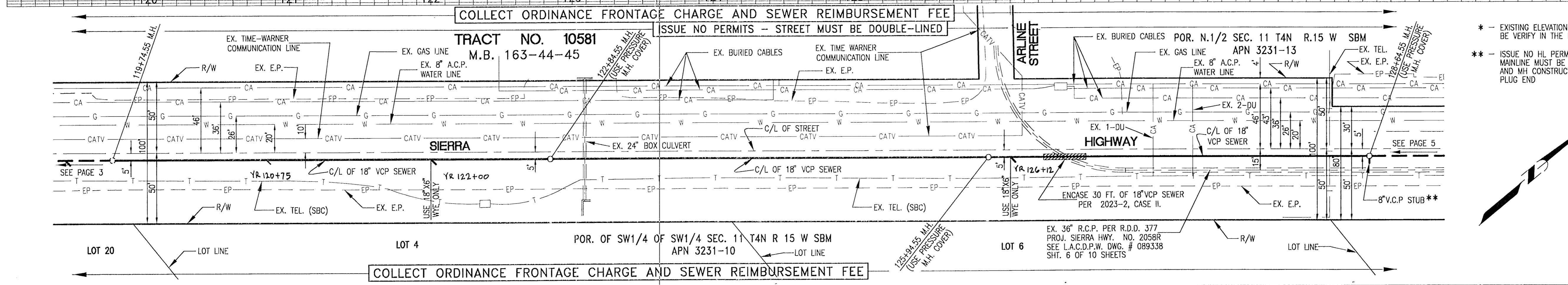


RECORD PLANS

* - EXISTING ELEVATION TO BE VERIFY IN THE FIELD.

** - ISSUE NO HL PERMITS MAINLINE MUST BE EXTENDED AND MH CONSTRUCTED. PLUG END

TRACT NO. 10581
M.B. 163-44-45



SCALE: VERT: 1" = 8'
HORIZ: 1" = 40'
20 0 40 80

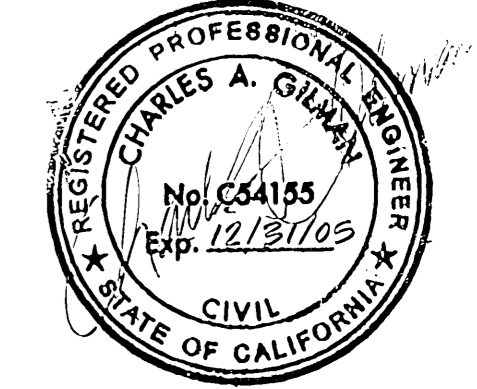
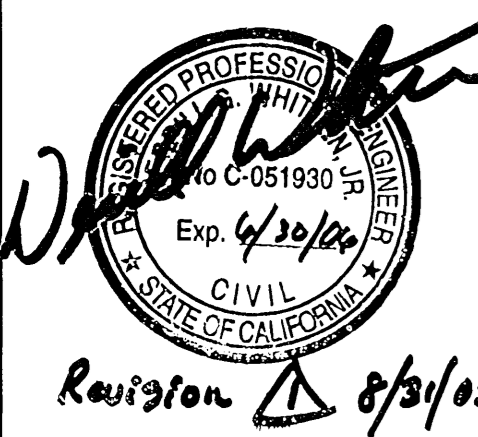
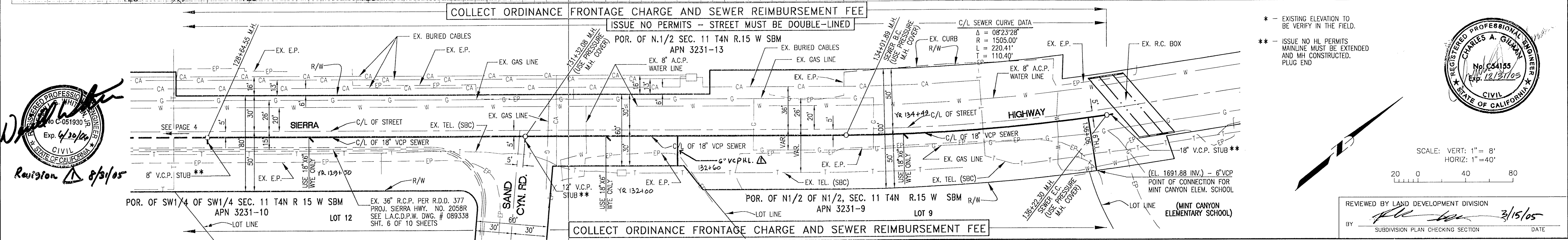
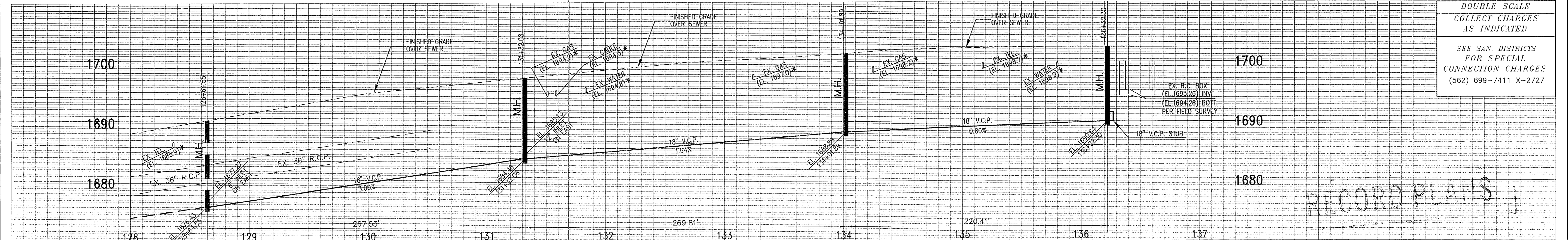
REVIEWED BY LAND DEVELOPMENT DIVISION
BY [Signature] 3/15/05
SUBDIVISION PLAN CHECKING SECTION DATE

5 0081.09 100H02 YPATHEMELJ IOYMAS TIM-YAWHCHH APPEJ2

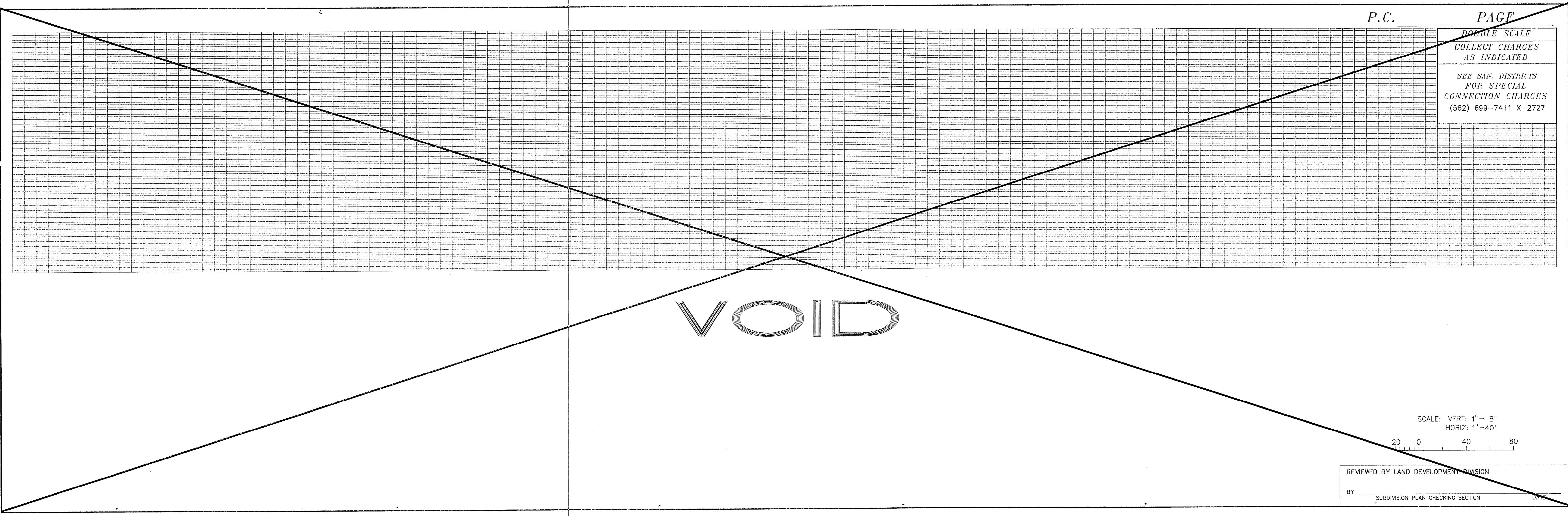
J:\P\04\040300A\SEWER SHEETS\SS-02.dwg 03/04/05 05:52:48 L10A

DOUBLE SCALE
COLLECT CHARGES
AS INDICATED
SEE SAN. DISTRICTS
FOR SPECIAL
CONNECTION CHARGES
(562) 699-7411 X-2727

RECORD PLANS



REVIEWED BY LAND DEVELOPMENT DIVISION
BY *[Signature]* 3/15/05
SUBDIVISION PLAN CHECKING SECTION DATE



DOUBLE SCALE
COLLECT CHARGES
AS INDICATED
SEE SAN. DISTRICTS
FOR SPECIAL
CONNECTION CHARGES
(562) 699-7411 X-2727

SCALE: VERT: 1" = 8'
HORIZ: 1" = 40'
REVIEWED BY LAND DEVELOPMENT DIVISION
BY _____ DATE _____

3 008ft .C.P. JOOHOE YPATIEMELEJ IOUMAS TIM-YAWHCHJH APPEJIE