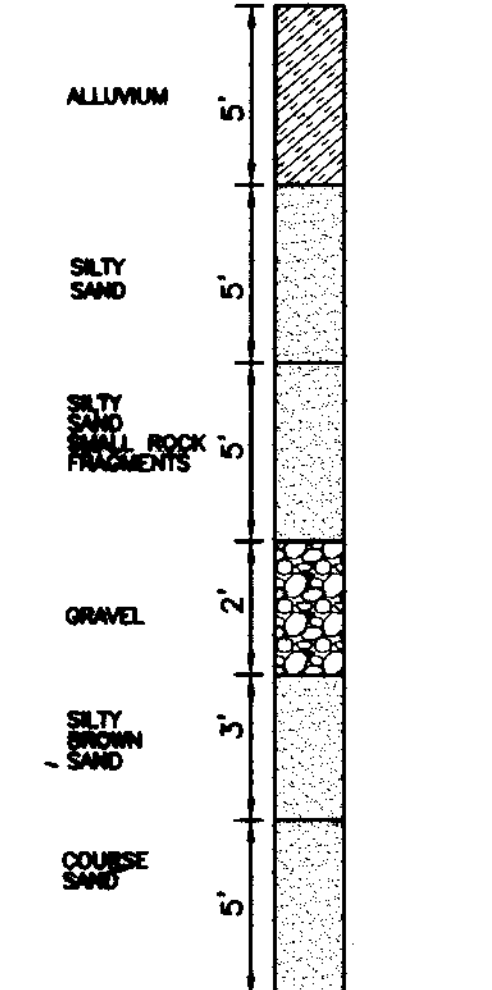
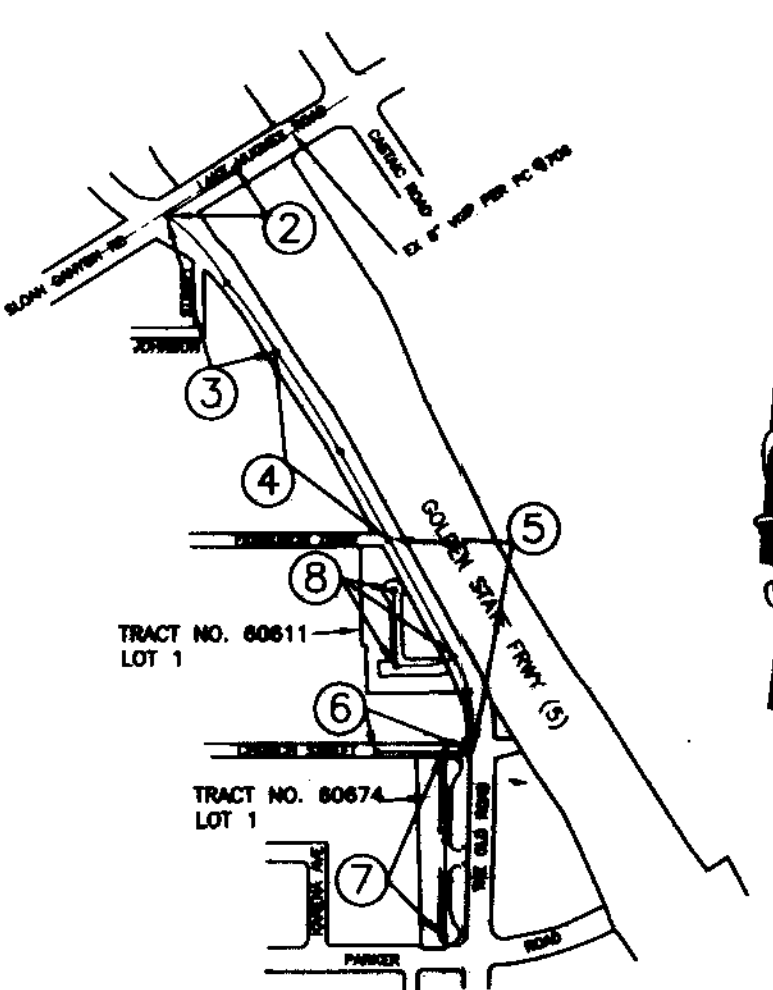


BENCH MARKS
 BM L-3988 Elev. 1187.047
 USC&GS mon in top of rail NW cor bridge #B 1778 5.2
 m n/o c/i Parker Rd and 6.1m e/o S frwy on ramp
 mid (F 1219 1971) Elevation 1187.047
 NAVD 88 Datum
 NEWHALL 2003



INDEX MAP
 SCALE: 1" = 600' INDEX 1214

P.C. 11832 TR. NO. 60611 & 60674
 THOMAS GUIDE PAGE: 4389 - G6.07
 BUILDING & SAFETY DISTRICT OFFICE: SANTA CLARITA

NO.	REVISION	REVISED BY	APPROVED BY	DATE
1	RELOCATE SEWER IN LAKE HUGHES DR. PAGE 2 & 3	R. ROTHMAN	T. Rothman	4/27/06
2	RELOCATE MANHOLE AT FERRIS DR. PAGE 4 & 5	R. ROTHMAN	T. Rothman	4/27/06

STORMWATER POLLUTION CONTROL REQUIREMENTS FOR SEWER CONSTRUCTION

- Eroded sediments and other pollutants must be retained on site and may not be transported from the site via sheet flow, swales, area drains, natural drainage courses, or wind.
- Stockpiles of earth and other construction related materials must be protected from being transported from the site by the forces of wind or water.
- Fuels, oils, solvents, and other toxic materials must be stored in accordance with their listing and are not to contaminate the soil and surface waters. All approved storage containers are to be protected from the weather. Spills must be cleaned up immediately and disposed of in a proper manner. Spills may not be washed into the drainage system.
- Excess or waste concrete may not be washed into the public way or any other drainage system. Provisions shall be made to retain concrete wastes on site until they can be disposed of as solid waste.
- Trash and construction-related solid wastes must be deposited into a covered receptacle to prevent contamination of rainwater and dispersal by wind.
- Sediments and other materials may not be tracked from the site by vehicle traffic. The construction entrance roadways must be stabilized so as to inhibit sediments from being deposited into the public way. Accidental depositions must be swept up immediately and may not be washed down by rain or other means.
- Any slopes with disturbed soils denuded of vegetation must be stabilized so as to inhibit erosion by wind and water.
- The following BMPs as outlined in, but not limited to, the "Best Management Practice Handbook, California Stormwater Quality Task Force, Sacramento, California 2003," or the latest revised edition, may apply during the construction of this project (additional measure may be required if deemed appropriate by the county inspector).

- | | | |
|--|---|---|
| TEMPORARY SOIL STABILIZATION | EQUIPMENT TRACKING CONTROL | NON-STORMWATER MANAGEMENT |
| SS1 - SCHEDULING | TC1 - STABILIZED CONSTRUCTION ENTRANCE/EXIT | NS1 - WATER CONSERVATION PRACTICES |
| SS2 - PRESERVATION OF EXISTING VEGETATION | TC2 - STABILIZED CONSTRUCTION ROADWAY | NS2 - DETERIORATION OPERATIONS |
| SS3 - HYDRAULIC MULCH | TC3 - ENTRANCE/OUTLET TIRE WASH | NS3 - PAVING AND GRINDING OPERATIONS |
| SS4 - HYDROSEEDING | | NS4 - TEMPORARY STREAM CROSSING |
| SS5 - SOIL BUNDLES | TEMPORARY SEDIMENT CONTROL | NS5 - CLEAR WATER DIVERSION |
| SS6 - STRAW MULCH | SE1 - SILT FENCE | NS6 - ILLICIT CONNECTION/DISCHARGE DETECTION AND REPORTING |
| SS7 - GEOTEXTILES, PLASTIC COVERS, & EROSION CONTROL BLANKETS/MATS | SE2 - SEDIMENT/DESILTING BASIN | NS7 - POTABLE WATER/IRRIGATION |
| SS8 - WOOD MULCHING | SE3 - SEDIMENT TRAP | NS8 - VEHICLE AND EQUIPMENT CLEANING |
| SS9 - EARTH Dikes/DRAINAGE SWALES & LINED DITCHES | SE4 - CHECK DAM | NS9 - VEHICLE AND EQUIPMENT FUELING |
| SS10 - OUTLET PROTECTION/VELOCITY DISSIPATION DEVICES | SE5 - FIBER ROLLS | NS10 - VEHICLE AND EQUIPMENT MAINTENANCE |
| SS11 - SLOPE DRAINS | SE6 - GRAVEL BAG BERM | NS11 - PILE DRIVING OPERATIONS |
| SS12 - STRAMBANK STABILIZATION | SE7 - STREET SWEEPING AND VACUUMING | NS12 - CONCRETE CURING |
| | SE8 - SANDING BARRIER | NS13 - MATERIAL AND EQUIPMENT USE OVER WATER OR ADJACENT TO WATER |
| | SE9 - STRAW BALE BARRIER | NS14 - CONCRETE FINISHING |
| | SE10 - STORM DRAIN INLET PROTECTION | NS15 - STRUCTURE DEMOLITION/REMOVAL OVER OR ADJACENT TO WATER |
| WASTE MANAGEMENT & MATERIAL POLLUTION CONTROL | WIND EROSION CONTROL | |
| WM1 - MATERIAL DELIVERY AND STORAGE | WE1 - WIND EROSION CONTROL | |
| WM2 - MATERIAL USE | | |
| WM3 - STOCKPILE MANAGEMENT | | |
| WM4 - SPILL PREVENTION AND CONTROL | WM7 - CONTAMINATED SOIL MANAGEMENT | |
| WM5 - SOLID WASTE MANAGEMENT | WM8 - CONCRETE WASTE MANAGEMENT | |
| WM6 - HAZARDOUS WASTE MANAGEMENT | WM9 - SANITARY/SEPTIC WASTE MANAGEMENT | |
| | WM10 - LIQUID WASTE MANAGEMENT | |

THE FOLLOWING LATEST REVISED STANDARD PLANS ON FILE IN THE OFFICE OF THE FOLLOWING DEPARTMENT SHALL APPLY IN THE CONSTRUCTION OF THIS PROJECT:
 LOS ANGELES COUNTY DEPARTMENT OF PUBLIC WORKS

- 2000-0
 2002-1
 2003-2
 2004-1
 2014-1
 2015-1
 2021-1
 2023-2
 2023-2
 2024-1
 2027-1
 6008-1
 AMERICAN PUBLIC WORKS ASSOCIATION
 207-1
 208-1
 210-2
 222-1
- LEGEND FOR SANITARY SEWER PLANS AND PROFILES AND DISTRICT MAPS.
 PRECAST CONCRETE SHALLOW MANHOLE
 REINFORCED PRECAST CONCRETE MANHOLE
 RECTANGULAR SHALLOW MANHOLE
 RECTANGULAR MANHOLE FRAME AND COVER
 STANDARD MANHOLE STEP
 BEDDING FOR SEWER PIPE
 CRADLING AND ENCASEMENT
 WYE OR TEE SUPPORT
 ALLOWABLE TRENCH WIDTHS
 MINIMUM PUBLIC SAFETY REQUIREMENTS
 PRECAST REINFORCED CONCRETE MANHOLE BASE
 BREAKING INTO EXISTING MANHOLES
 MANHOLE FRAME AND COVER LOCKING TYPE
 HOUSE CONNECTION SEWER

NOTICE TO CONTRACTOR:
 MAINTAIN SEWER FLOW AT ALL TIMES DURING CONSTRUCTION.

NOTES:
 NO CONNECTION FOR THE DISPOSAL OF INDUSTRIAL WASTES SHALL BE MADE TO SEWERS SHOWN ON THESE DRAWINGS UNTIL A PERMIT FOR INDUSTRIAL WASTE WATER DISCHARGE HAS BEEN ISSUED BY THE COUNTY SANITATION DISTRICTS FOR SAID CONNECTIONS.
 BEFORE BREAKING INTO OR CONSTRUCTION OF A COUNTY SANITATION DISTRICT SEWER AND PRIOR TO FINAL ACCEPTANCE OF THE PROJECT, A COUNTY SANITATION DISTRICT INSPECTOR SHALL BE NOTIFIED BY PHONE (611) 266-7685 SO THAT REQUIRED INSPECTION CAN BE MADE.

PRIVATE CONTRACT SEWER GENERAL NOTES

- A sewer construction permit shall be obtained and a fee paid for construction inspection and record plans to the Department of Public Works at the Permit Counter, 900 South Fremont Avenue, 8th Floor, Alhambra, at least 72 hours prior to starting work under this permit. Copies of all other required permits, such as Road Excavation, Caltrans, etc., must be filed with the permit application.
- Prior to issuance of any permit, the contractor shall file a permit for excavations and trenches from the State of California Division of Industrial Safety, and a Certificate of Worker's Compensation Insurance with the Department of Public Works named as the Certificate Holder. The Department of Public Works shall be notified 30 days prior to cancellation of the insurance policy.
- If work is done in a State Highway, a permit must be obtained from the State of California Division of Highways, 120 South Spring Street, Los Angeles, California.
- When work is within a contract city, the contractor must contact the Director of Public Works of that city, to determine the location to pay the inspection fee.
- The contractor shall contact the district office listed on the "Application for Construction Permit" to arrange for an acceptable construction start date.
- Approval of this plan by the County of Los Angeles does not constitute a representation as to accuracy of the location of the easement or non-existence of any underground utility pipe or structure within the limits of this project. This note applies to all pages.
- All work shall be in accordance with the current edition of the "Standard Specifications for Public Works Construction", including supplements and the latest "Special Provisions for the Construction of Sanitary Sewer" and shall be prosecuted only in the presence of the Department of Public Works.
- The contractor's attention is directed to Section 7-10.4.1 of the "Standard Specifications for Public Works Construction" in regard to safety orders and shall conform to the "Minimum Public Safety Requirement" as shown on Los Angeles Department of Public Works' standard plan 6008-1.
- Elevations are in feet above U.S.C. & G.S. sea level datum of 1929.
- No revisions shall be made in these plans without the approval of the Director of Public Works.
- No representative of the Department of Public Works will survey or lay out any portion of the work.
- Grades to which this improvement is to be constructed are shown on plans and profiles. Grade points for top of curb, centerline of streets, or centerline of alleys, are shown by circles on profiles at all points between said design points. The grade shall be established so as to conform to a straight line drawn between said design points.
- The private engineer shall furnish the Department of Public Works with grade sheets and stationing for all house laterals and "Y" or "T" branches and shall provide stakes for them at their proper locations with stationing plainly marked. All house laterals shall be constructed in a straight alignment at right angles from the main line sewer except as shown on the plans. House laterals from chimneys shall not have an angle of less than 45 degrees with the M.L. sewer. Any change in alignment shall be requested in writing by the private engineer.
- The private engineer shall furnish the house lateral depth at the property line below the top of curb elevation for each house lateral on the grade sheet.
- An approved backwater valve is required when the pad is lower in elevation than the top of the next upstream manhole.

CONSTRUCTION NOTES

- Provide survey stakes on the property line or property lines produced at right angles to the sewer line at the centerline of each manhole.
- Vitrified clay pipe joints shall be type "D" or "G" per "Standard Specifications for Public Works Construction" Section 208-2.
- If a pipe is in within three feet of the sewer, the sewer shall be encased per LACDPW standard plan 2023-2, Case II, two feet on each side from the point of interference.
- All joints between cast iron pipe and vitrified clay shall be made with a rubber sleeve joint, type "D" (with bushing if necessary) per "Standard Specifications for Public Works Construction" Section 208-2.
- House laterals to be constructed with inverts at the property line 6 feet below curb grade except as noted.
- Wye or tee branches may be used for connections to the mainline sewers except as noted.
- If during the course of construction, it is determined that there is less than four feet of cover over the top of a mainline or house lateral V.C.P. sewer which is not indicated on the plans, the pipes shall be encased per LACDPW standard plan 2023-2, Case II, unless otherwise approved by the Director of Public Works.
- All structures shall be either brick sewer manholes per LACDPW standard plan S-3 (APWA 203-0), or precast concrete sewer manholes per LACDPW standard plan S-36 (APWA 200-2), or reinforced precast concrete manhole per LACDPW standard plan 2003-2, except as noted.
- Resurface all trenches within paved areas to meet Department of Public Works or California State Highway requirements in accordance with the permits.
- Full compliance with Section 306-1.3.4. of the "Standard Specifications for Public Works Construction" will be required for backfill in street. Certification of backfill, compaction, and sand equivalents by a qualified civil engineer shall be provided by the permittee prior to the issuance of a certificate of partial acceptance.
- All backfill and fills outside of the street right of way shall be compacted to 90% of the maximum density as determined by ASTM soil compaction test D 1557-78 method "D" unless otherwise specified. This shall be certified by a qualified civil engineer. This certification shall be submitted to the Construction Division of the Department of Public Works prior to the acceptance of the work by the county.
- Manhole tops in unimproved rights of way to be six inches above finished grade.
- Sewers to be tested for leakage per section 306-1.4 of the "Standard Specifications for Public Works Construction" and "Special Provisions for the Construction of Sanitary Sewer".
- Manhole tops in improved rights of way to be level with finished grade.
- All eyes and/or house laterals are to be located at least 5' apart and when possible not closer than 5' to any manhole.

PROFILE, ALIGNMENT, AND GRADE OF **PAGE 1**
SANITARY SEWERS
 TO BE CONSTRUCTED IN
 TRACT NO. 60611 & 60674 PC NO. 11832
 4 SHEETS: 8 PAGES
 COUNTY OF LOS ANGELES CALIFORNIA
 INDEX 1214

DONALD L. WOLFE DIRECTOR OF PUBLIC WORKS
 APPROVED BY LAND DEVELOPMENT DIVISION
 BY: [Signature] 4/28/06
 ASSISTANT DIVISION ENGINEER DATE
 SUBMITTED BY: [Signature] 5/24/06
 SUBDIVISION PLAN CHECKING SECTION DATE

APPROVED: COUNTY SANITATION DISTRICT NO. 32
 OF LOS ANGELES COUNTY, CALIFORNIA
 JAMES F. STAHL - CHIEF ENGINEER and GENERAL MANAGER

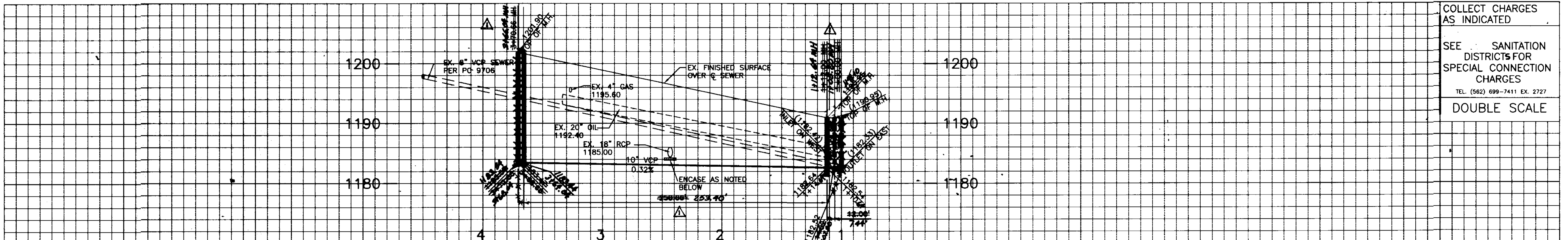
BY: [Signature] 5/26/06
 OFFICIAL ENGINEER DATE

PRIVATE ENGINEERS NOTICE TO CONTRACTORS:

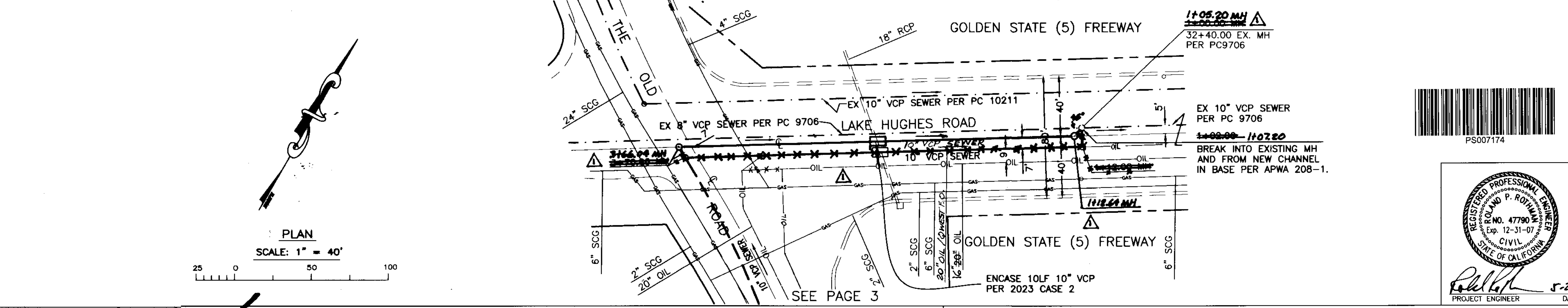
THE EXISTENCE AND LOCATION OF ANY UNDERGROUND UTILITY PIPES OR STRUCTURES SHOWN ON THESE PLANS IS REQUIRED BY A SEARCH OF AVAILABLE RECORDS TO THE BEST OF OUR KNOWLEDGE. THERE ARE NO EXISTING UTILITIES EXCEPT AS SHOWN ON THIS MAP. THE CONTRACTOR IS REQUIRED TO TAKE PRECAUTIONARY MEASURES TO PROTECT THE UTILITY LINES SHOWN AND ANY OTHER LINES NOT OF RECORD OR NOT SHOWN ON THIS DRAWING. PRIOR TO EXCAVATION THE CONTRACTOR SHALL CALL TOLL FREE DIG ALERT- TO VERIFY THE UNDERGROUND LOCATION OF ALL UTILITY LINES.

[Signature] 5-23-06
 PROJECT ENGINEER RCE NO. DATE

P.C. 11832 PAGE 2



COLLECT CHARGES AS INDICATED
 SEE SANITATION DISTRICTS FOR SPECIAL CONNECTION CHARGES
 TEL. (562) 699-7411 EX. 2727
 DOUBLE SCALE

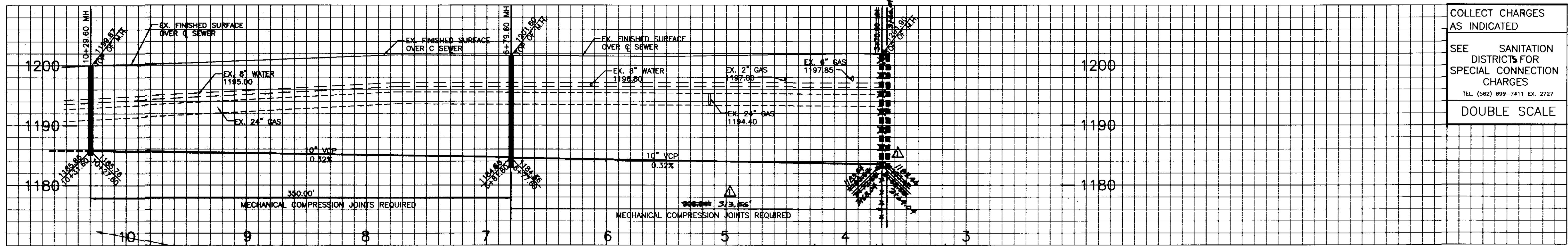


PLAN
 SCALE: 1" = 40'

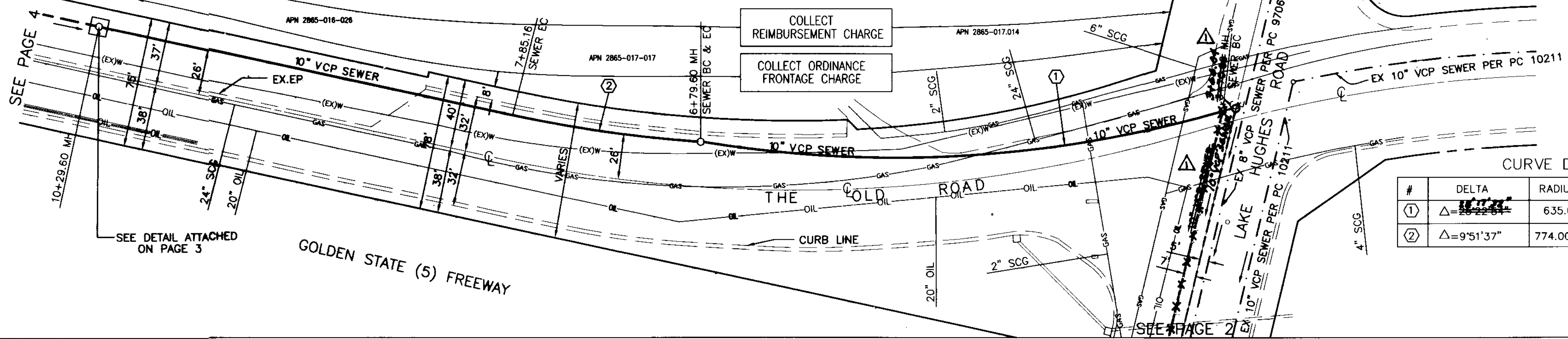
SANITARY SEWER PLANS IN
 TRACT NO. 60611 & 60674 PC NO. 11832
 REVIEWED BY LAND DEVELOPMENT DIVISION
 BY: [Signature] 5/24/06
 SUBDIVISION PLAN CHECKING SECTION DATE
 COUNTY OF LOS ANGELES DEPARTMENT OF PUBLIC WORKS

ROTHMAN ENGINEERING, INC.
 28145 AVENUE CROCKER, SECOND FLOOR
 VALENCIA, CALIFORNIA 91355
 (661) 775-9500 FAX (661) 775-9939

REGISTERED PROFESSIONAL ENGINEER
 P. ROTHMAN
 P. NO. 47790
 Exp. 12-31-07
 CIVIL
 STATE OF CALIFORNIA
 [Signature] 5-23-06
 PROJECT ENGINEER DATE DWG



COLLECT CHARGES AS INDICATED
 SEE SANITATION DISTRICTS FOR SPECIAL CONNECTION CHARGES
 TEL. (562) 699-7411 EX. 2727
 DOUBLE SCALE



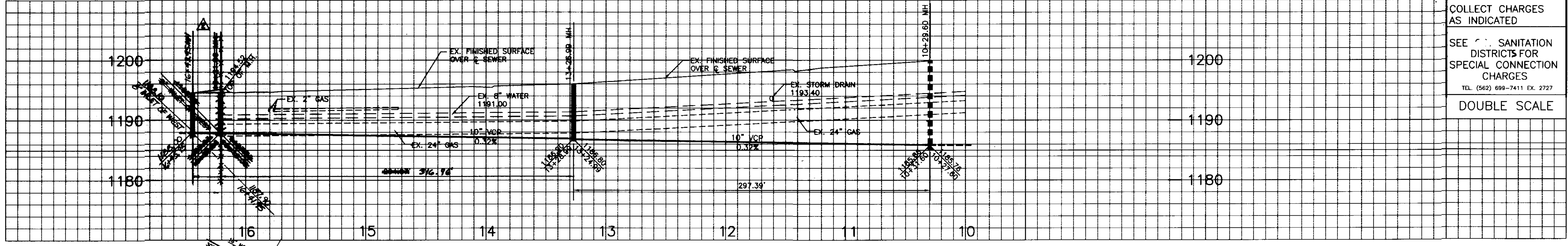
CURVE DATA

#	DELTA	RADIUS	LENGTH	TAN
①	$\Delta = 11^{\circ}51'37''$	635.00'	133.20'	66.76'
②	$\Delta = 9^{\circ}51'37''$	774.00'	133.20'	66.76'

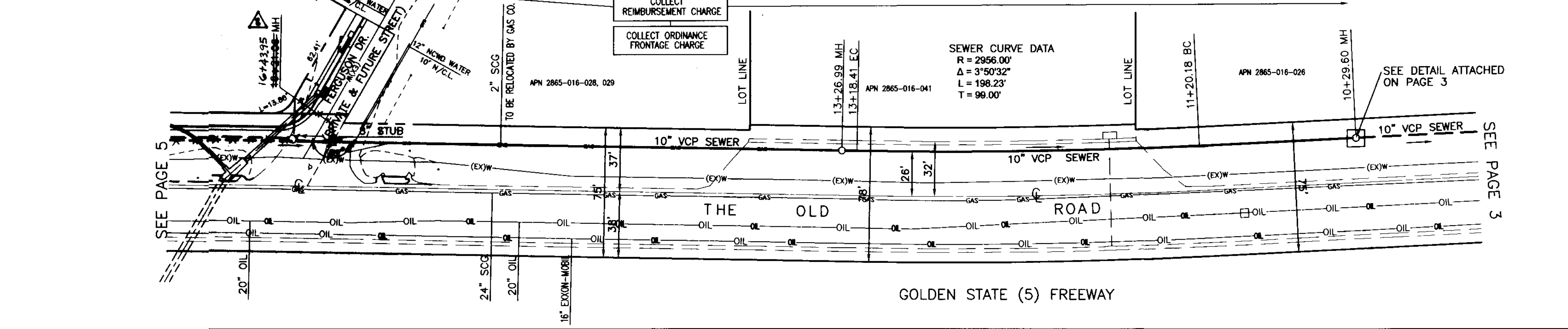
PLAN
 SCALE: 1" = 40'

REVIEWED BY LAND DEVELOPMENT DIVISION
 BY *T. K. Hallmark*
 SUBDIVISION PLAN CHECKING SECTION

① 10' x 10' CONCRETE PAD DETAIL



COLLECT CHARGES AS INDICATED
 SEE SANITATION DISTRICTS FOR SPECIAL CONNECTION CHARGES
 TEL. (562) 699-7411 EX. 2727
 DOUBLE SCALE



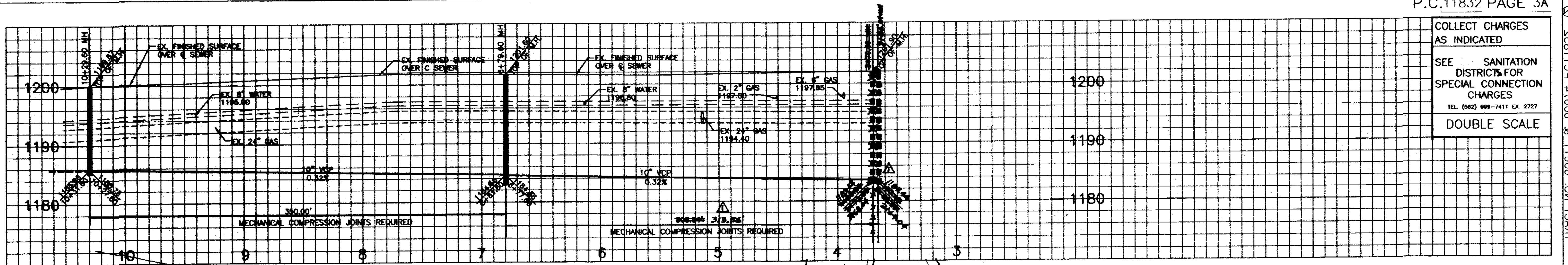
SEWER CURVE DATA

R = 2956.00'
 $\Delta = 3^{\circ}50'32''$
 L = 198.23'
 T = 98.00'

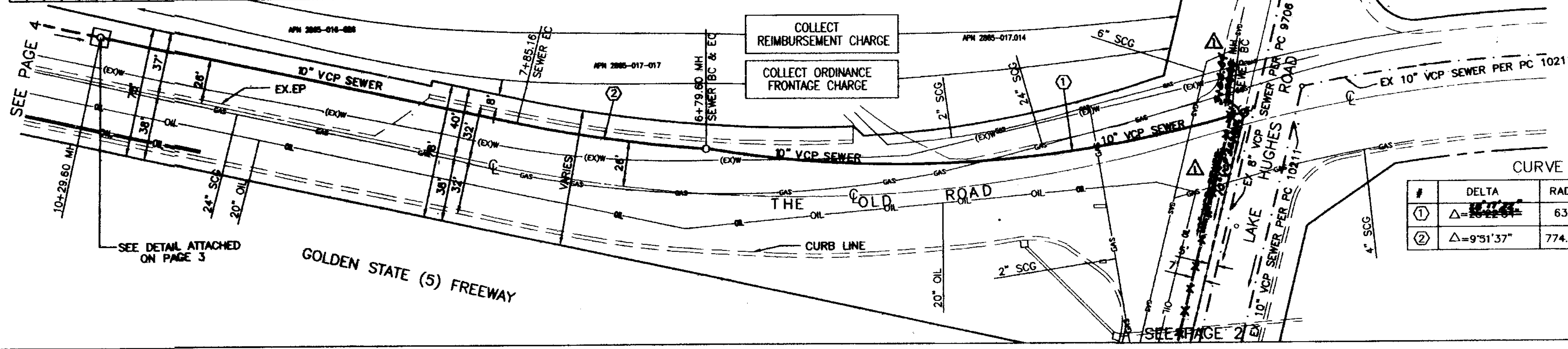
PLAN
 SCALE: 1" = 40'

REVIEWED BY LAND DEVELOPMENT DIVISION
 BY *T. K. Hallmark*
 SUBDIVISION PLAN CHECKING SECTION

SEE DETAIL ATTACHED ON PAGE 3

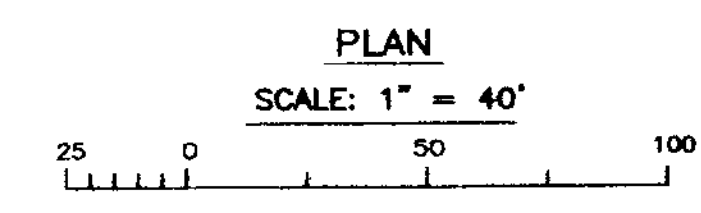
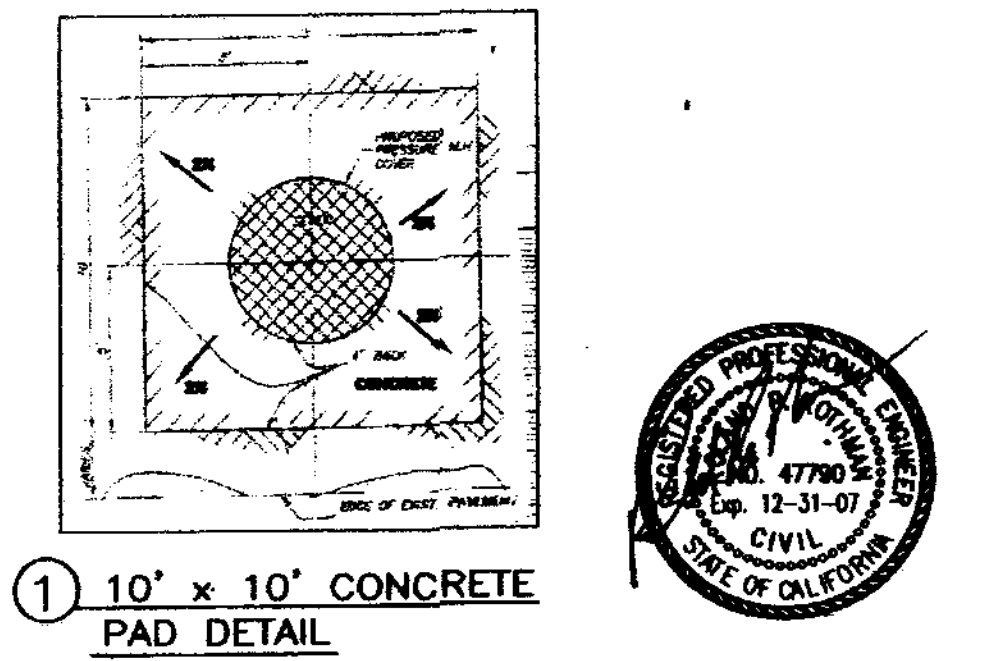


COLLECT CHARGES AS INDICATED
 SEE SANITATION DISTRICTS FOR SPECIAL CONNECTION CHARGES
 TEL. (562) 699-7411 EX. 2727
 DOUBLE SCALE

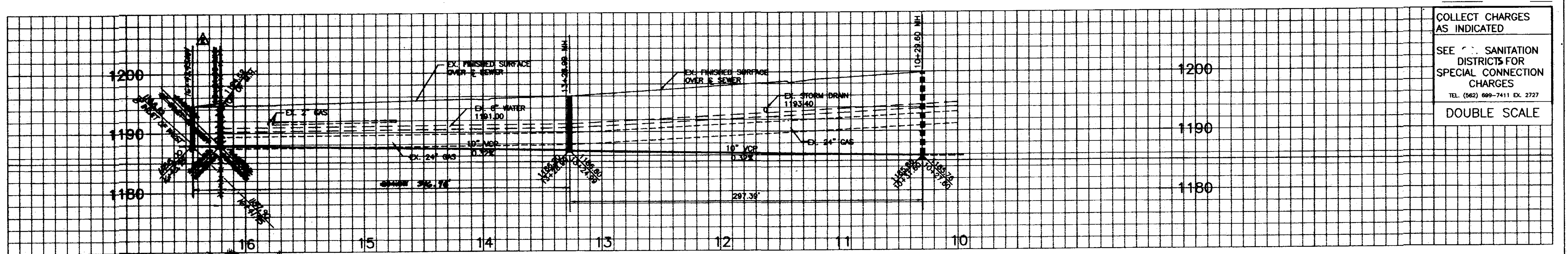


CURVE DATA

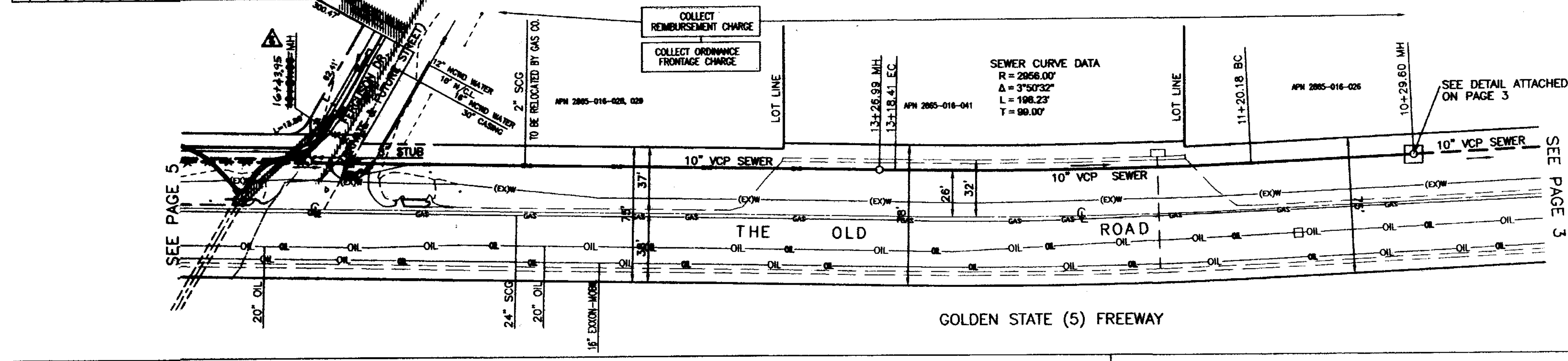
#	DELTA	RADIUS	LENGTH	TAN
①	$\Delta = 20^{\circ} 44' 54''$	635.00'	317.50'	160.00'
②	$\Delta = 9^{\circ} 51' 37''$	774.00'	133.20'	66.76'



REVIEWED BY LAND DEVELOPMENT DIVISION
 BY *T. K. Hall*
 SUBMISSION PLAN CHECKING SECTION

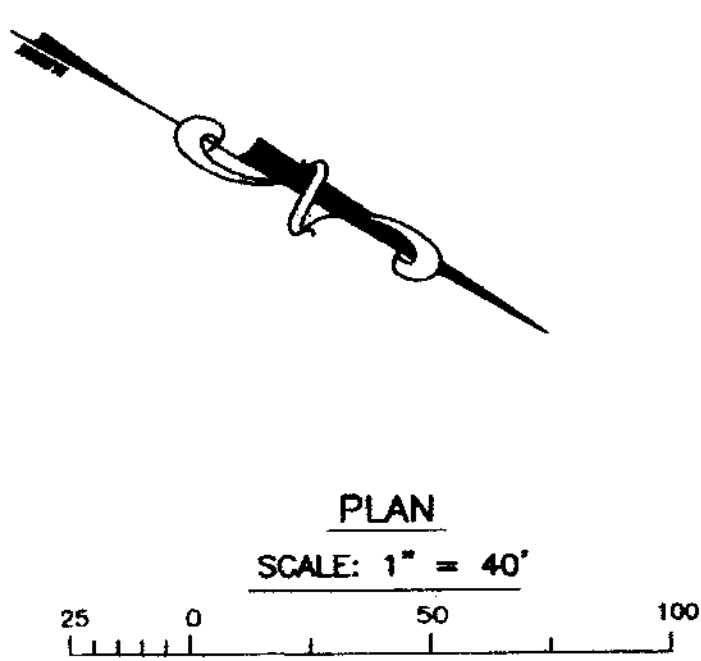


COLLECT CHARGES AS INDICATED
 SEE SANITATION DISTRICTS FOR SPECIAL CONNECTION CHARGES
 TEL. (562) 699-7411 EX. 2727
 DOUBLE SCALE



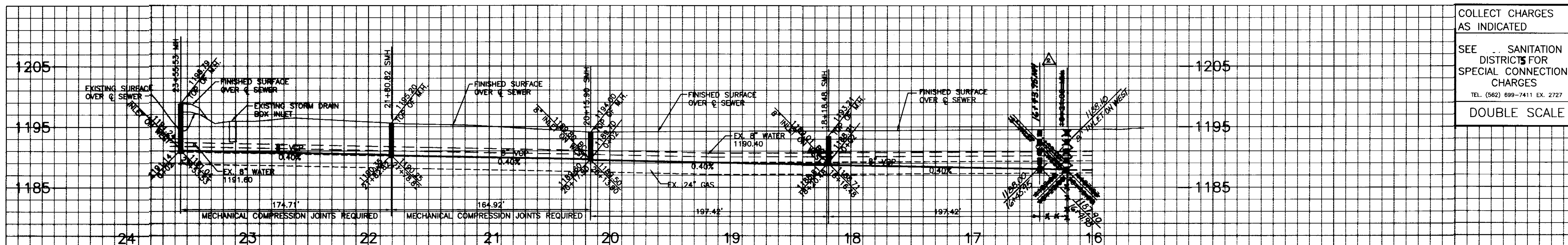
SEWER CURVE DATA

R = 2968.00'
 A = 3750.522"
 L = 108.23'
 T = 88.00'



REVIEWED BY LAND DEVELOPMENT DIVISION
 BY *T. K. Hall*
 SUBMISSION PLAN CHECKING SECTION

S&B 11/24/08 8:11:08 ON TA08T



COLLECT CHARGES AS INDICATED

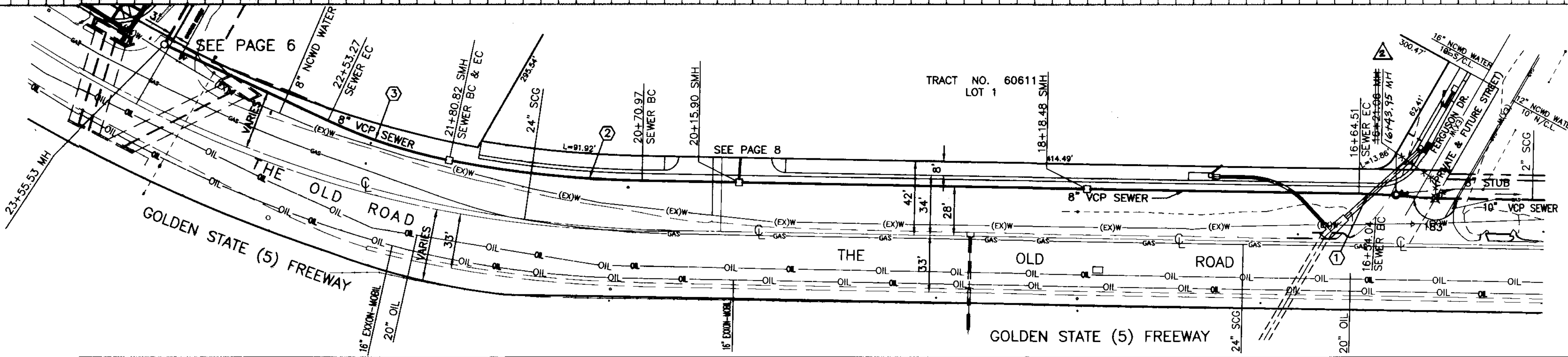
SEE SANITATION DISTRICTS FOR SPECIAL CONNECTION CHARGES

TEL. (562) 699-7411 EX. 2727

DOUBLE SCALE

CURVE DATA

#	DELTA	RADIUS	LENGTH	TAN
①	$\Delta=3^{\circ}00'00''$	200.00'	10.47'	5.24'
②	$\Delta=10^{\circ}07'07''$	622.00'	109.85'	55.00'
③	$\Delta=13^{\circ}50'10''$	300.00'	72.45'	36.40'

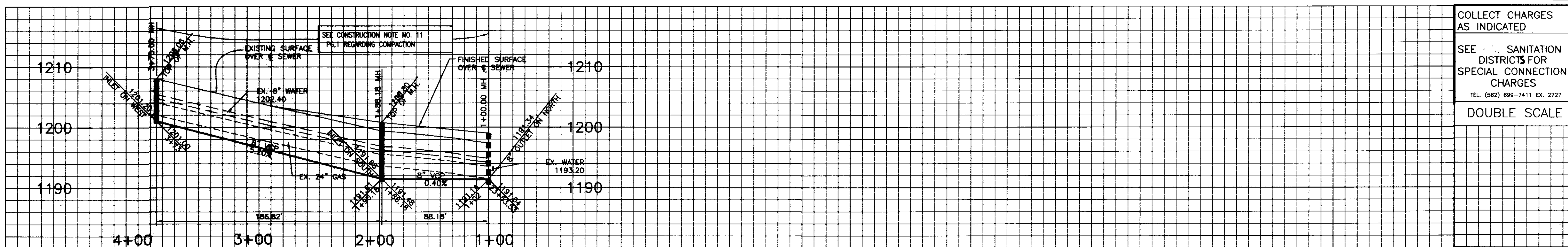


PLAN
SCALE: 1" = 40'

25 0 50 100

REVIEWED BY LAND DEVELOPMENT DIVISION

BY *T. K. Kishida* 5/20/06 DATE

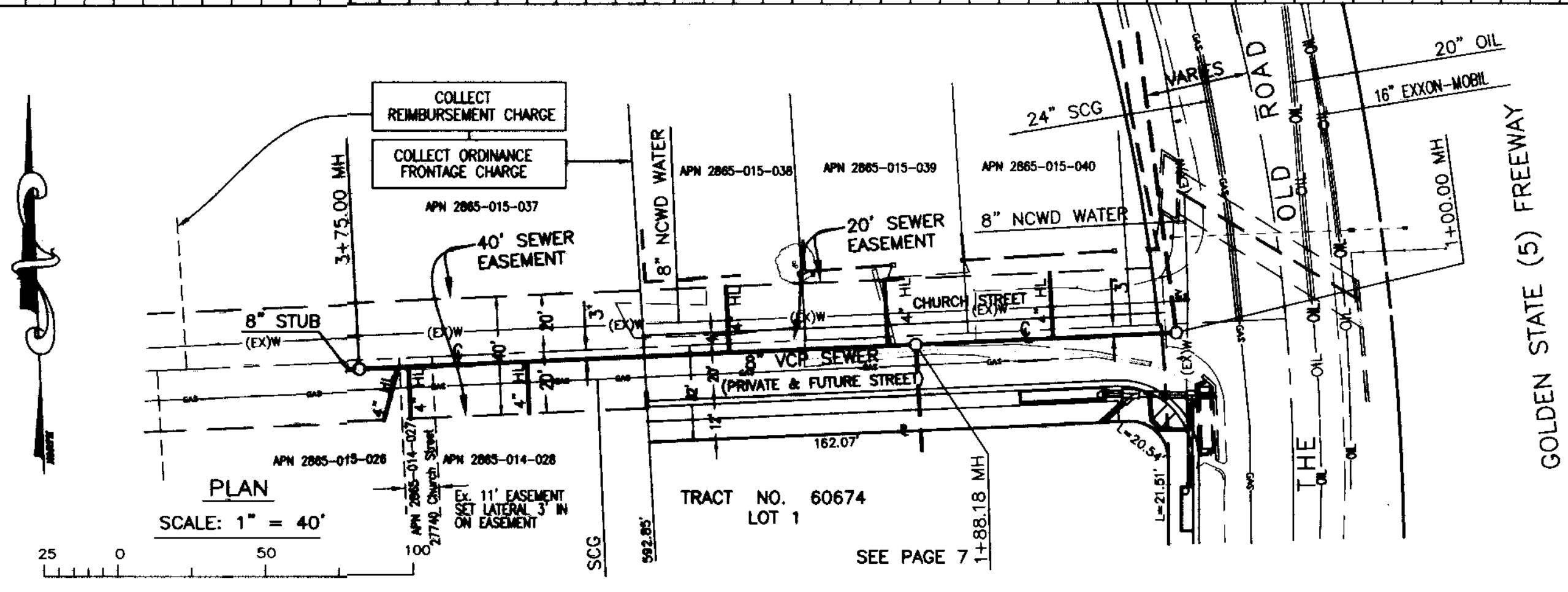
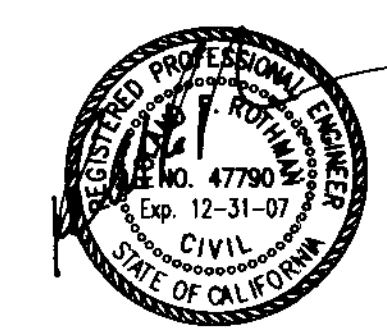


COLLECT CHARGES AS INDICATED

SEE SANITATION DISTRICTS FOR SPECIAL CONNECTION CHARGES

TEL. (562) 699-7411 EX. 2727

DOUBLE SCALE

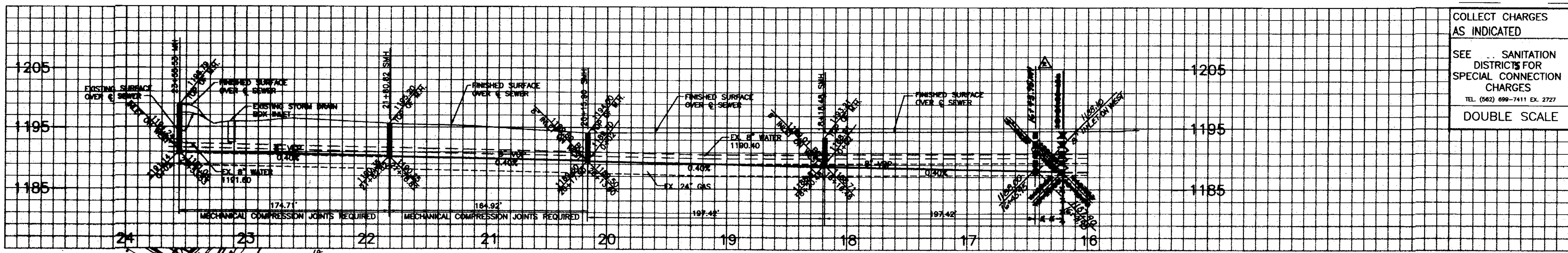


PLAN
SCALE: 1" = 40'

25 0 50 100

REVIEWED BY LAND DEVELOPMENT DIVISION

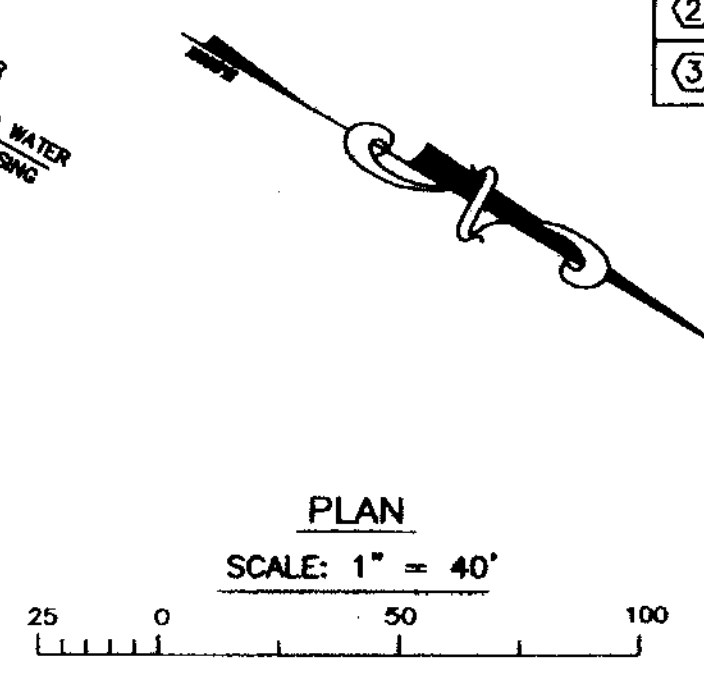
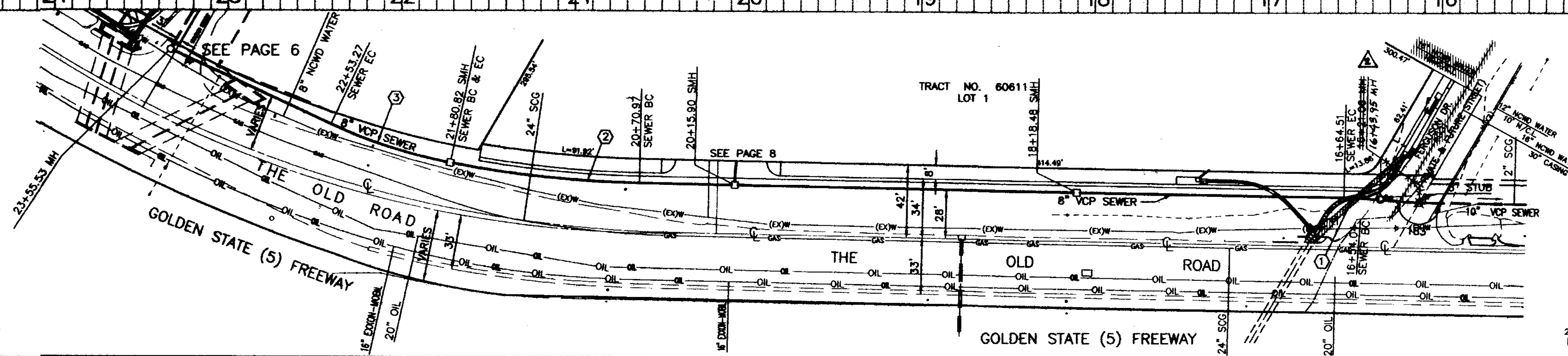
BY *T. K. Kishida* 5/20/06 DATE



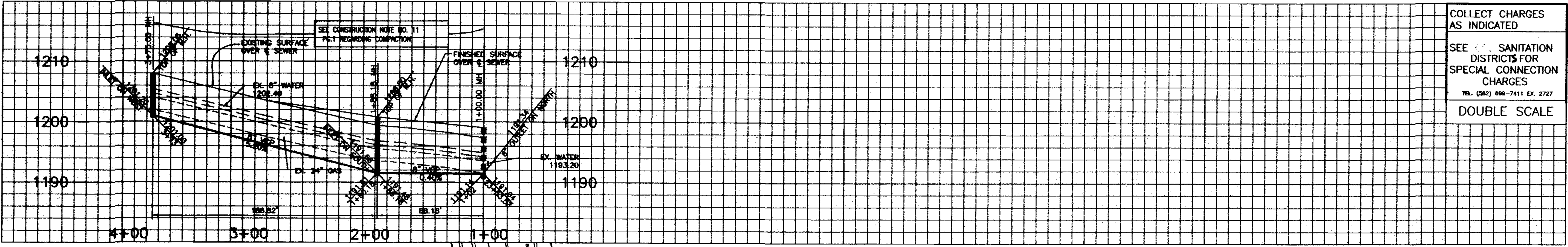
COLLECT CHARGES AS INDICATED
 SEE SANITATION DISTRICTS FOR SPECIAL CONNECTION CHARGES
 TEL. (562) 699-7411 EX. 2727
 DOUBLE SCALE

CURVE DATA

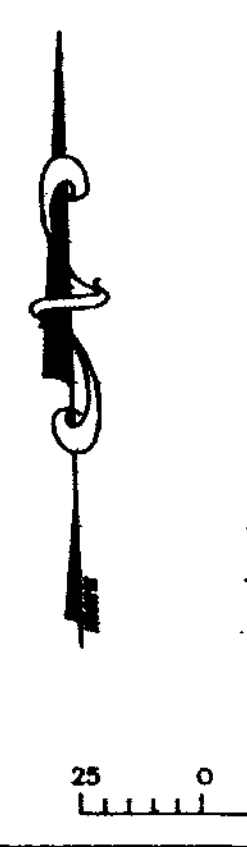
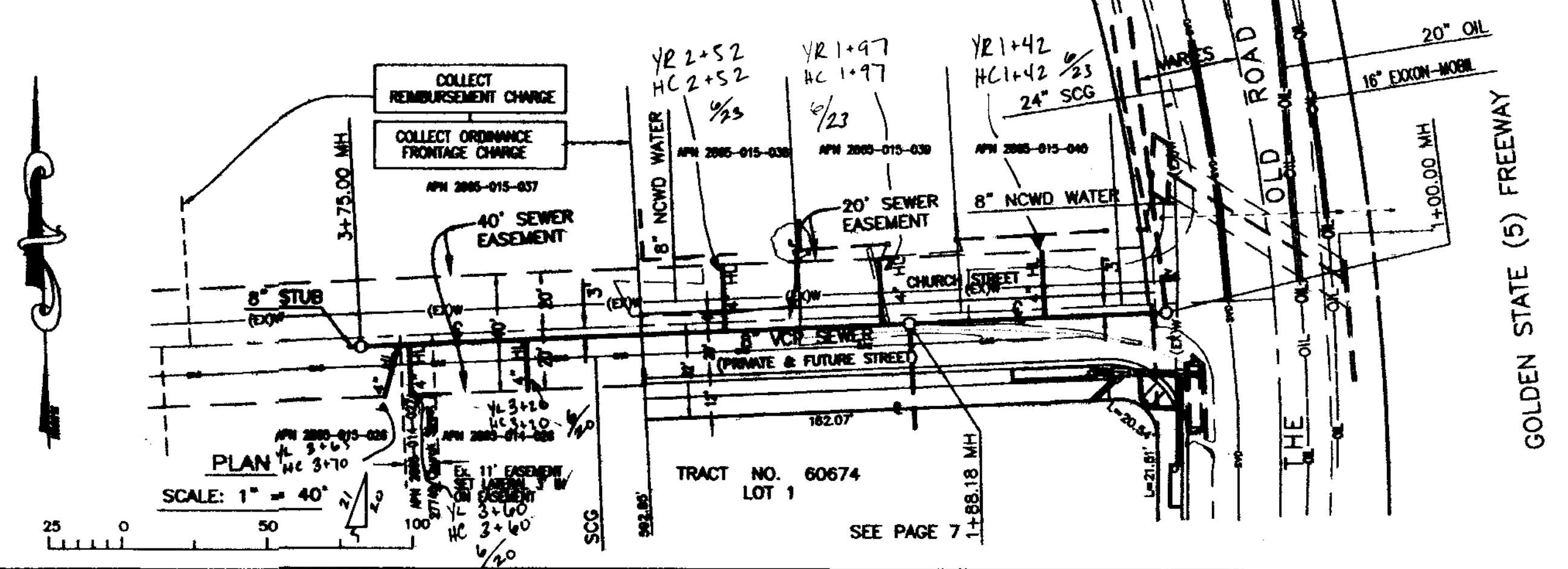
#	DELTA	RADIUS	LENGTH	TAN
①	Δ=3°00'00"	200.00'	10.47'	5.24'
②	Δ=10°07'07"	622.00'	109.85'	55.00'
③	Δ=13°50'10"	300.00'	72.45'	36.40'



REVIEWED BY LAND DEVELOPMENT DIVISION
 BY *T. Khalil*
 SUBDIVISION PLAN CHECKING SECTION
 DATE

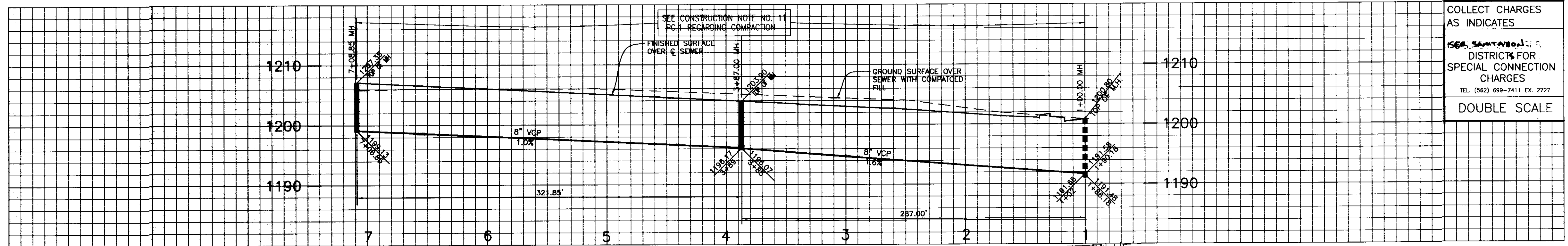


COLLECT CHARGES AS INDICATED
 SEE SANITATION DISTRICTS FOR SPECIAL CONNECTION CHARGES
 TEL. (562) 699-7411 EX. 2727
 DOUBLE SCALE

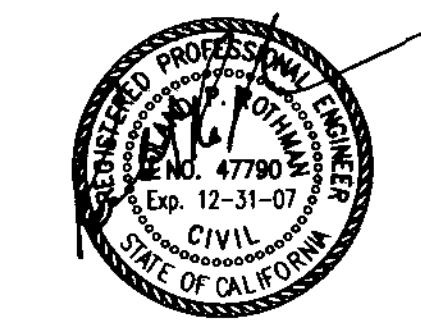
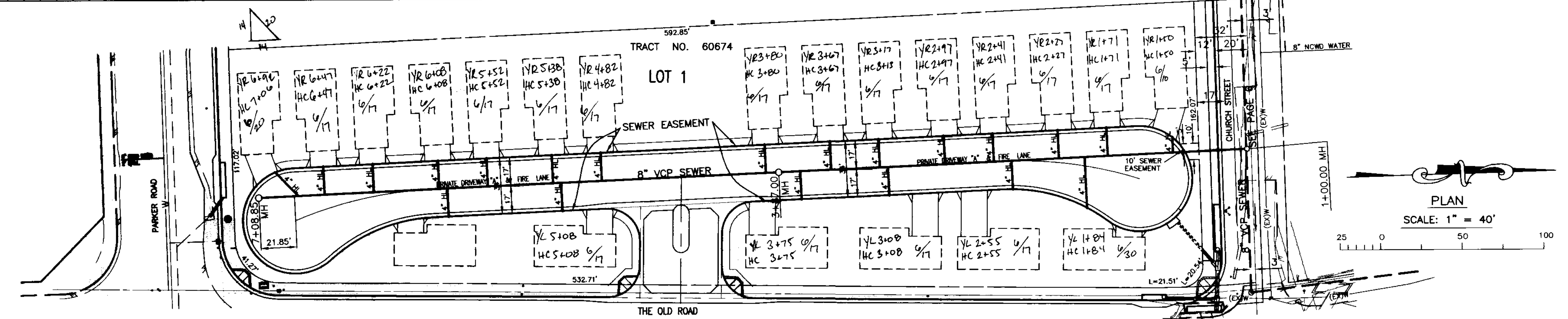


REVIEWED BY LAND DEVELOPMENT DIVISION
 BY *T. Khalil*
 SUBDIVISION PLAN CHECKING SECTION
 DATE

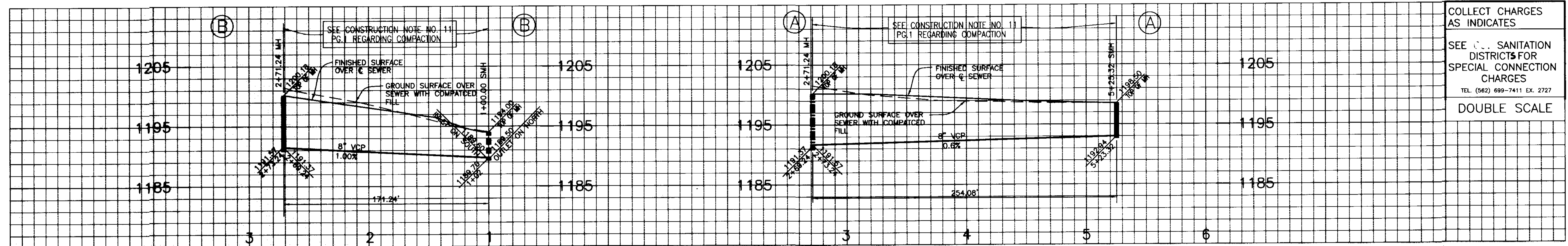




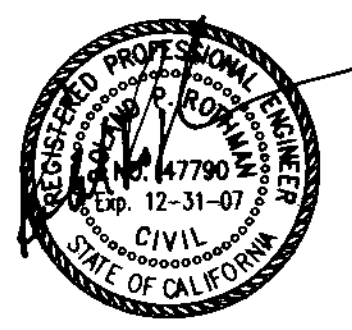
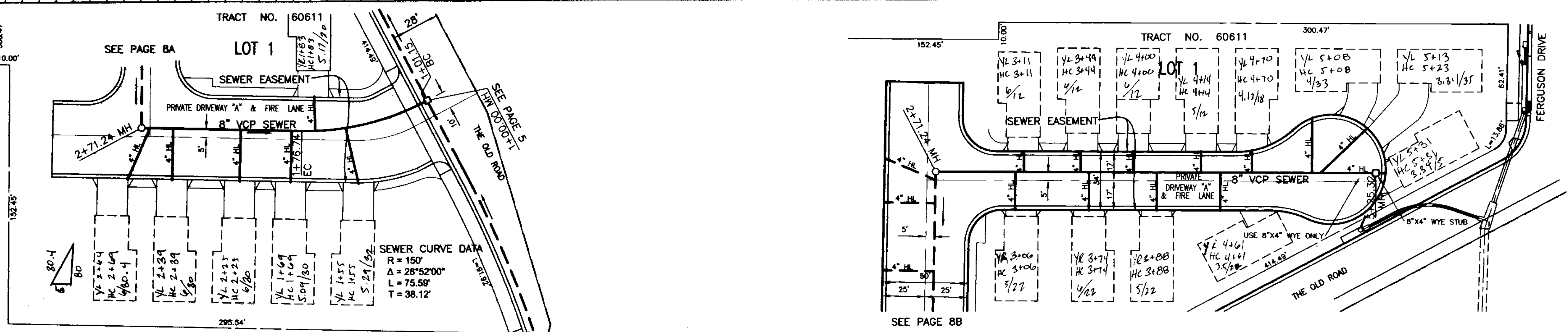
COLLECT CHARGES AS INDICATES
 SEE SANITATION DISTRICTS FOR SPECIAL CONNECTION CHARGES
 TEL. (562) 699-7411 EX. 2727
 DOUBLE SCALE



REVIEWED BY LAND DEVELOPMENT DIVISION
 BY *T. K. Khatwal* DATE *5/24/06*
 SUBDIVISION PLAN CHECKING SECTION



COLLECT CHARGES AS INDICATES
 SEE SANITATION DISTRICTS FOR SPECIAL CONNECTION CHARGES
 TEL. (562) 699-7411 EX. 2727
 DOUBLE SCALE



REVIEWED BY LAND DEVELOPMENT DIVISION
 BY *T. K. Khatwal* DATE *5/24/06*
 SUBDIVISION PLAN CHECKING SECTION