

PROFILE, ALIGNMENT, AND GRADE OF SANITARY SEWERS TO BE CONSTRUCTED IN TRACT NO. 48086-03 PC NO. 12033 6 SHEETS: 11 PAGES COUNTY OF LOS ANGELES CALIFORNIA CSMD INDEX N-1512

MARK PASTRELLA LA COUNTY DIRECTOR OF PUBLIC WORKS APPROVED BY LAND DEVELOPMENT DIVISION 8/15/18 ASSISTANT DIVISION ENGINEER DATE

SANTA CLARITA VALLEY SANITATION DISTRICT OF LOS ANGELES COUNTY, CALIFORNIA GRACE ROBINSON HYDE - CHIEF ENGINEER AND GENERAL MANAGER

APPROVED BY OFFICE ENGINEER DATE 9/19/18

CITY OF SANTA CLARITA APPROVAL TRACT/PARCEL ADDRESS 48086-03 PC NO. 12033

CITY OF SANTA CLARITA DISCHARGE OUTLET APPROVED WE APPROVE THIS SEWER AREA STUDY/PLAN AND CONCUR WITH THE FOLLOWING FINDINGS WITHIN THE CITY WITH MITIGATION

APPROVED BY CITY ENGINEER DATE 9/19/2018

ENGINEER'S/SURVEYOR'S STATEMENT REGARDING THE PRESENCE OF MONUMENTS WITHIN PROJECT LIMITS I HEREBY ATTEST THAT I HAVE LOCATED AND REFERENCED ON THESE PLANS THE MONUMENTS EXISTING PRIOR TO CONSTRUCTION TO ENSURE PERPETUATION OF THEIR LOCATION IN ACCORDANCE WITH SECTION 8771 OF THE BUSINESS AND PROFESSIONS CODE...

ENGINEER'S/SURVEYOR SEAL & SIGNATURE DATE 07/26/18

PRIVATE ENGINEERS NOTICE TO CONTRACTORS THE EXISTENCE AND LOCATION OF ANY UNDERGROUND UTILITY PIPES OR STRUCTURES SHOWN ON THESE PLANS IS REQUIRED BY A SEARCH OF AVAILABLE RECORDS TO THE BEST OF OUR KNOWLEDGE...

PROJECT ENGINEER DATE 07/26/18

PRIVATE CONTRACT SEWER GENERAL NOTES

- 1. A sewer construction permit shall be obtained and a fee paid for construction inspection and record plans to the County of Los Angeles Department of Public Works... 2. When work is within a contract city, a sewer construction permit shall be obtained and a fee paid for construction inspection and record plans to the City... 3. Prior to issuance of any permit, the contractor shall file a permit for excavations and trenches from the State of California Division of Industrial Safety... 4. If work is done in a State Highway, a permit must be obtained from the State of California Division of Highways... 5. The contractor shall contact the district office listed on the "Application for Construction Permit" to arrange for an acceptable construction start date... 6. Approval of this plan by the County of Los Angeles Department of Public Works does not constitute a representation as to accuracy of the location of the existence or nonexistence of any underground utility pipe or structure within the limits of this project... 7. All work shall be in accordance with the latest approved edition of the "Standard Specifications for Public Works Construction" including supplements (if there is any) the latest "Additions and Amendments to the Standard Specifications for Public Works Construction" and the latest "Special Provisions for the Construction for Sanitary Sewer" and shall be proceeded only in the presence of the County of Los Angeles Department of Public Works... 8. The contractor's attention is directed to Section 7-10.4.1 of the "Standard Specifications for Public Works Construction" in regard to safety orders and shall conform to the "Minimum Public Safety Requirement" as shown on County of Los Angeles Department of Public Works Standard Plan No. 60067... 9. Elevations are in feet above U.S.C. and G.S. sea level datum of 1988... 10. No revisions shall be made in these plans without the approval of the County of Los Angeles Department of Public Works... 11. No representative of the County of Los Angeles Department of Public Works will survey or layout any portion of the work... 12. Grades to which this improvement is to be constructed are shown on plans and profiles. Grade point for top of curbs, centerline of streets, or centerline of alleys is shown by circles on profiles at all points between said design points... 13. The private engineer shall furnish the County of Los Angeles Department of Public Works with grade sheets and stationing for all house laterals and "Y" and "T" branches and shall provide stakes for them at their proper locations with stationing plainly marked... 14. The private engineer shall furnish the house lateral depth at the property line below the top of curb elevation for each house lateral on the grade sheet... 15. An approved backwater valve is required when the pad is lower in elevation than the top of the next upstream manhole... 16. Contact Environmental Programs Division for an Industrial Waste Discharge Permit at (626) 456-3517.

CONSTRUCTION NOTES

- 1. Provide survey stakes on the property line or property lines produced at right angles to the sewer line at the centerline of each manhole... 2. Vitrified clay pipe joints shall be type "D" or "G" per "Standard Specifications for Public Works Construction" Section 208-2... 3. If a power pipe is within three feet of the sewer, the sewer shall be encased, per LACDPW Standard Plan 2023-2, Case II, two feet on each side from the point of interference... 4. All joints between cast-iron pipe and vitrified clay shall be made with a rubber sleeve joint, type "D" (with hushing if necessary), per "Standard Specifications for Public Works Construction" Section 208-2... 5. House laterals to be constructed with inverts at the property line 6 feet below curb grade except as noted... 6. Wye or tee branches may be used for connections to the mainline sewers except as noted... 7. If during the course of construction it is determined that there is less than four feet of cover over the top of a mainline or house lateral V.C.P. sewer, which is not indicated on the plans, the pipes shall be encased per LACDPW Standard Plan 2023-2, Case II, unless otherwise approved by the County of Los Angeles... 8. All structures shall be either brick sewer manholes per LACDPW Standard Plan S-3 (SPPWC 203-1), or precast concrete sewer manholes per LACDPW Standard Plan S-36 (SPPWC 200-3), or reinforced precast manhole per LACDPW Standard Plan 2003-2, except as noted... 9. Resurfacing all trenches within paved areas to meet Department of Public Work or California State Highway requirements in accordance with the permits... 10. Full compliance with Section 306-1.3 of the "Standard Specifications for Public Works Construction" will be required for backfill in street. Certification of backfill, compaction and sand equivalents by a qualified Civil Engineer shall be provided by the permittee prior to the issuance of a Certificate of Partial Acceptance... 11. All backfill and fill outside of the street right of way shall be compacted to 90 percent of the maximum density as determined by ASTM Soil Compaction Test Method D 1557-78, Method "D", unless otherwise specified. This shall be certified by a qualified Civil Engineer. This certification shall be submitted to the Land Development Division, Permit Section of the County of Los Angeles Department of Public Works prior to the acceptance of the work by the County... 12. Manhole tops in unimproved rights of way to be six inches above finished grade... 13. Sewers to be tested for leakage per Section 306-1.4 of the "Standard Specification for Public Works Construction" and "Special Provisions for the Construction of Sanitary Sewer" if applicable... 14. Manhole tops in improved rights of way to be level with finished grade... 15. All wyes and/or house laterals are to be located at least 5 feet apart, and when possible, not closer than 5 feet to any manhole... 16. All pipe materials shall be vitrified clay pipe or ductile iron pipe or other approved materials by the County of Los Angeles Department of Public Works... 17. All pipe materials shall be lined with Proteco 401 Ceramic Epoxy lining... 18. Cured in place pipe liner shall be used for all extra vitrified clay pipe if lining is required... 19. All Chimneys shall have terminal cleanout structure per SPPWC std. plan 204-2 with a traffic rated frame and cover.

NOTICE TO CONTRACTOR: LOT NO. 130-131 IS RESTRICTED FROM CONSTRUCTION OF BUILDINGS AND WILL NOT BE SERVED BY THIS SEWER.

ISSUE NO HOUSE LATERAL CONNECTION PERMITS UNTIL OUTLET PUMP STATION PC 11940PS AND PC 11877 IS ACCEPTED FOR PUBLIC USE BY THE COUNTY OF LOS ANGELES.

THE DEVELOPER shall be responsible for the continued maintenance of PC 12033 sanitary sewer until the County formally accepts it for maintenance. All manlines, manholes and laterals shall be protected from damage and infiltration.

EXISTING SEWER SYSTEM SHALL BE OPERATIONAL AT ALL TIMES DURING CONSTRUCTION/RECONSTRUCTION. NOTIFY AFFECTED HOMEOWNERS AT LEAST 72 HRS IN ADVANCE.

BACKWATER VALVES SHALL BE NECESSARY FOR LOTS 7, 8, 10-13, 15-17, 19-21, 29-30, 32-34, 36-41, 43-46, 48-54, 56-63, 67-69, 74-75, 77-79, 81-83, 85, 93, 95-96, 98, 100, 102-106, 108-109, 119, 121, 123, 125-126

SEWER VIDEO OF ALL SEGMENTS SHALL BE SUBMITTED PRIOR TO PARTIAL FIELD ACCEPTANCE (98%) AND COMPLETED FIELD ACCEPTANCE (98%). FINAL MAP AND AS-BUILT SEWER PLANS SHALL BE SUBMITTED PRIOR TO PARTIAL FIELD ACCEPTANCE. ALL SANITARY SEWER MANHOLE SHAFTS AND FRAMES SHALL BE WATERTIGHT WITH BUTYL RUBBER MASTIC JOINT SEALING COMPOUND OR APPROVED EQUAL BY THE LA COUNTY PUBLIC WORKS.

BENCHMARKS

LOS ANGELES COUNTY BENCHMARK NO. 1, 5013 LA COUNTY ROAD DEPT BENCHMARK MONUMENT SET 24 FEET NORTH OF THE CENTERLINE OF SOLEDAD CANYON ROAD, 1319 FEET WEST OF CAPRA ROAD, 6 FEET NORTHWEST OF A POWER POLE AND 304 FEET EAST OF MILE MARKER NO. ELEVATION 1834.439 (NAVD 88, 1995) 11.869.



STORMWATER POLLUTION PLAN NOTES

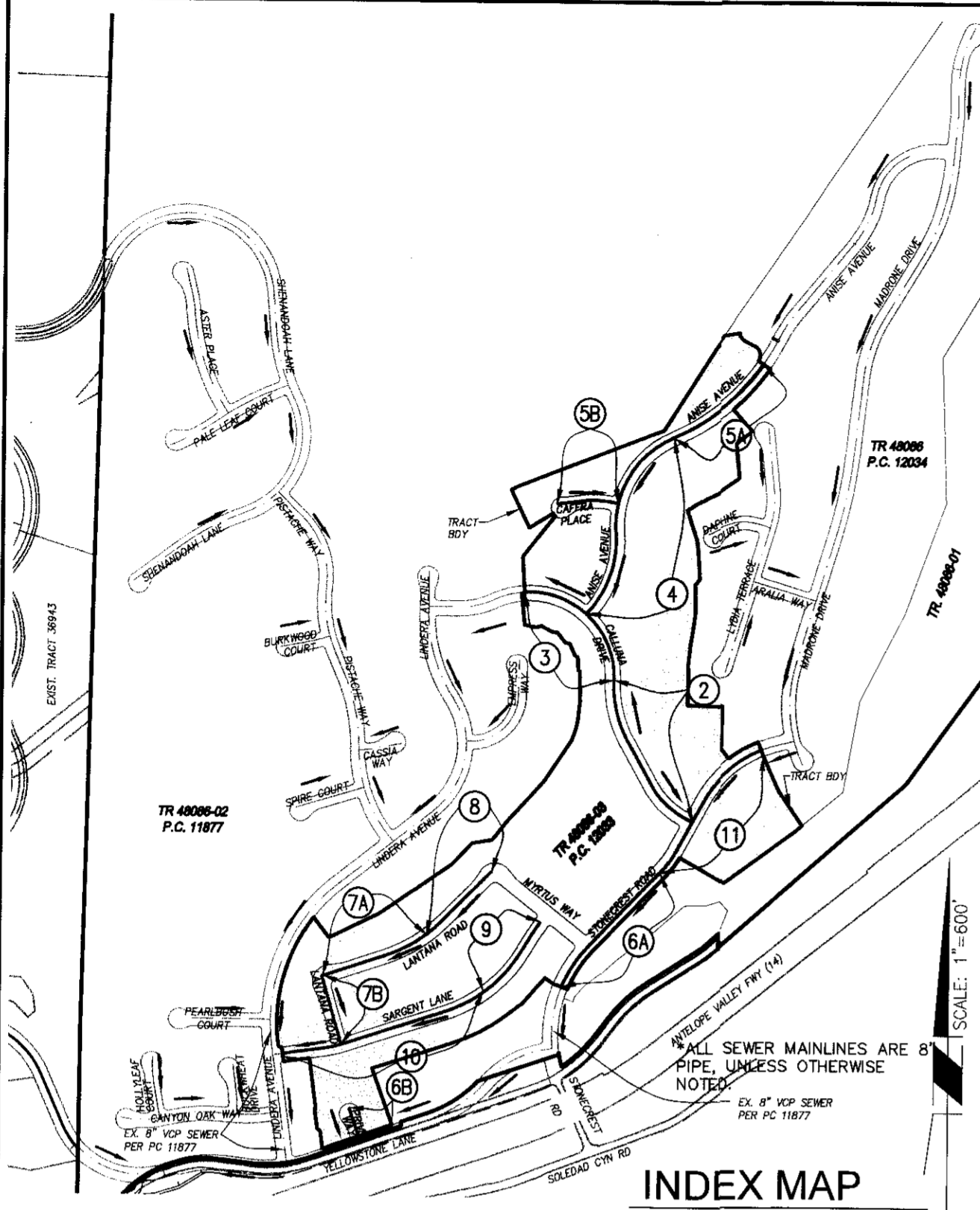
- A. NOTES: 1. Every effort should be made to eliminate the discharge of non-stormwater from the project site at all times... 2. Eroded sediments and other pollutants must be retained on-site and may not be transported from the site via sheet flow, swales, area drains, natural drainage courses or wind... 3. Spoil piles of earth and other construction related materials must be protected from being transported from the site by the forces of wind or water... 4. Fuels, oils, solvents, and other toxic materials must be stored in accordance with their listing and are not to contaminate the soil and surface waters... 5. Excess or waste concrete may not be washed into the public way or any other drainage system... 6. Trash and construction related solid wastes must be deposited into a covered receptacle to prevent contamination of rainwater and dispersal by wind... 7. Sediments and other materials may not be tracked from the site by vehicle traffic... 8. Any slopes with disturbed soils or denuded of vegetation must be stabilized so as to inhibit erosion by wind and water... 9. The following BMPs as outlined in, but not limited to, the latest edition of the California BMP Handbook (Construction) or Caltrans Stormwater Quality Handbooks (Construction Site BMP Manual), may apply during the construction of this project (additional measures may be required if deemed appropriate by the Project Engineer or the Building Official).

Table with 3 columns: EROSION CONTROL, NON-STORM WATER MANAGEMENT, WASTE MANAGEMENT AND MATERIALS POLLUTION CONTROL. Lists various practices like scheduling, water conservation, material delivery, etc.

- B. STANDARD PLANS: 2000-0 Legend for sanitary sewer plans and profiles and district maps... 2002-1 Precast concrete shallow manhole... 2002-2 Reinforced precast concrete manhole... 2004-1 Rectangular shallow manhole... 2014-1 Rectangular manhole frame and cover... 2015-1 Standard manhole step... 200-3 Precast Concrete Sewer Manhole... 204-2 Terminal Cleanout Structure... 207-2 Precast reinforced concrete manhole base... 208-2 Breaking into existing manholes... 210-3 Manhole frame and cover locking type... 220-3 Chimeys... 2021-1 Bedding for sewer pipe... 2023-2 Grading and encasement... 2024-1 WYE or TEE support... 2026-1 Erosion protection in steep slopes... 2027-1 Allowable trench widths... 2008-1 Minimum public safety requirements... 2100-1 Requirements for sanitary sewers near water mains... 221-2 Pipe anchors and backfill stabilizers... 222-2 House connection sewer... 223-2 House connection remodeling... 225-2 Blanket protection for pipes

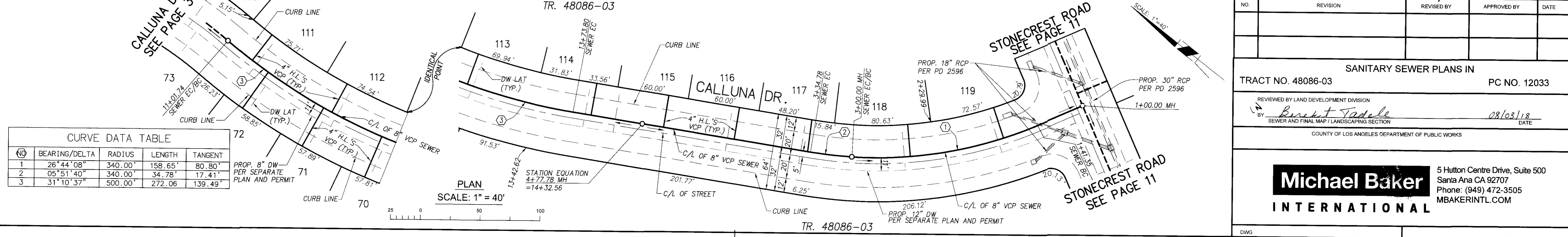
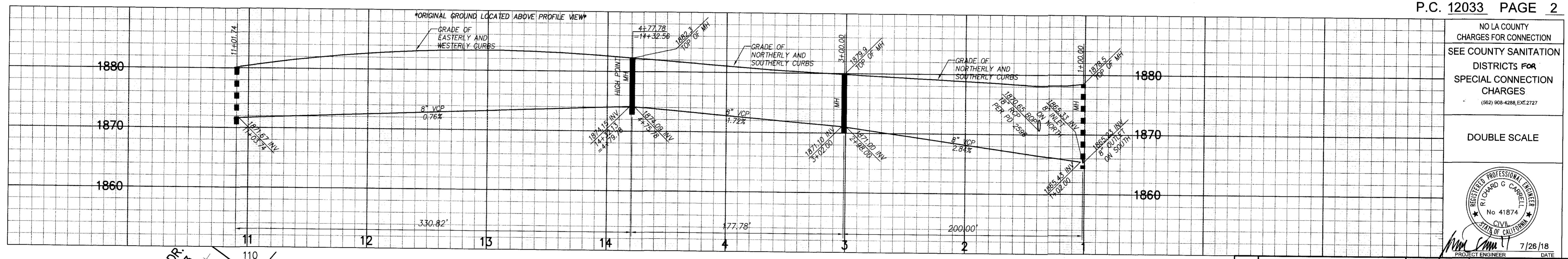
COUNTY SANITATION DISTRICTS (CSD) NOTES: 1. No connection for the disposal of industrial wastes shall be made to sewers shown on these plans until a permit for industrial wastewater discharge has been issued by CSD or said connection... 2. Prior to final acceptance of the project, notify the CSD Superintendent of Maintenance at (661) 257-4809 to report completion of construction of this local sewer that indirectly discharges into the CSD sewer system.

NOTES: Any damage to the sewer line shall be the responsibility of the contractor/owner. All grading and construction occurring over and the vicinity of the existing sewer shall be performed in the presence of a County inspector. Where applicable, the sewers shall be protected per Std. Plan 2023-2 at all significant crossings.



BUILDING AND SAFETY DISTRICT OFFICE: SANTA CLARITA SCALE: 1" = 60' CSMD INDEX N-1512 P.C. 12033 TR. NO. 48086-03 THOMAS GUIDE PAGE: 4462 TO GRID J6-J5 H5-H6 4463 TO GRID A4-A5-A6

Table with 4 columns: NO., REVISION, REVISED BY, APPROVED BY, DATE. Shows revision history.



CURVE DATA TABLE with columns: NO, BEARING/DELTA, RADIUS, LENGTH, TANGENT. Lists curve data for the sewer line.

NO. L.A. Co. CHARGES FOR CONNECTIONS
SEE CO. SANITATION DISTRICTS FOR SPECIAL CONNECTION CHARGES
(562) 699-7411, EXT. 2727
DOUBLE SCALE



7/26/18
DATE

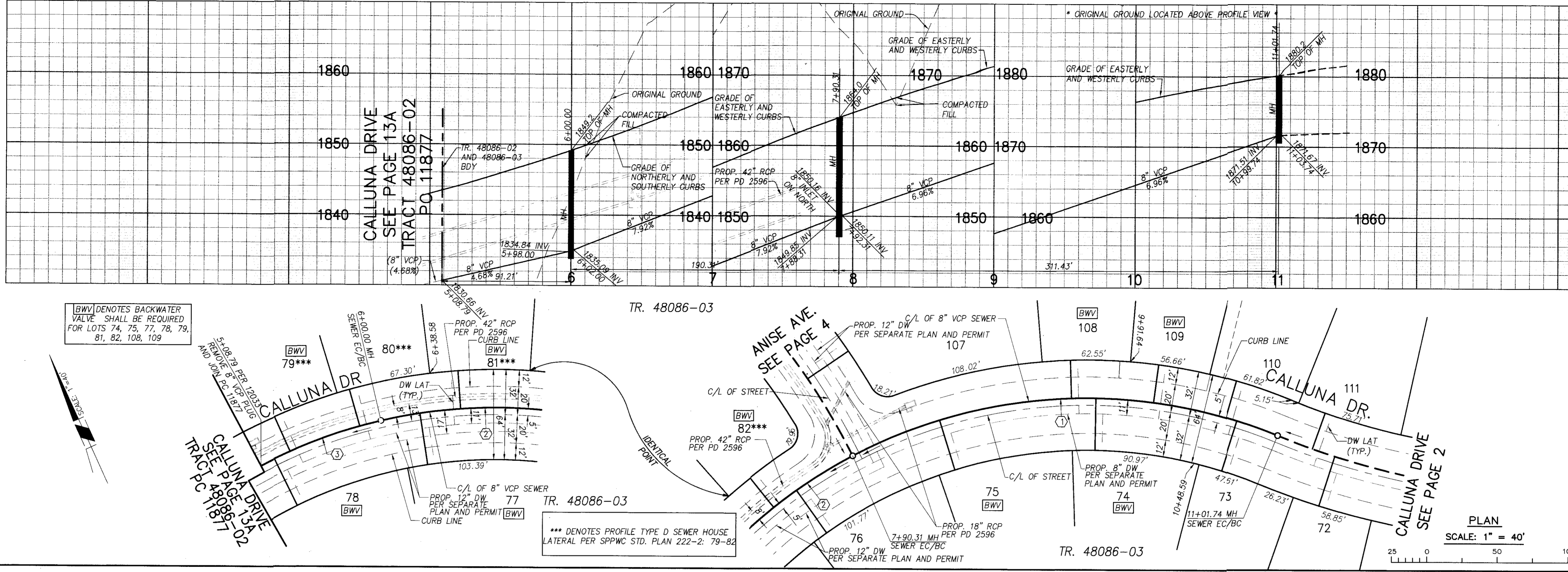
PS007714

CURVE DATA TABLE

(NO)	BEARING/DELTA	RADIUS	LENGTH	TANGENT
1	50°15'47"	355.00'	311.43'	166.53'
2	30°42'55"	355.00'	190.31'	97.50'
3	14°43'16"	355.00'	91.21'	45.86'

NO.	REVISION	REVISED BY	APPROVED BY	DATE

REVIEWED BY LAND DEVELOPMENT DIVISION
BY *Brunet Tadele* 08/03/18
SEWER, SUBDIVISION PLAN CHECKING SECTION DATE



NO. L.A. Co. CHARGES FOR CONNECTIONS
SEE CO. SANITATION DISTRICTS FOR SPECIAL CONNECTION CHARGES
(562) 699-7411, EXT. 2727
DOUBLE SCALE



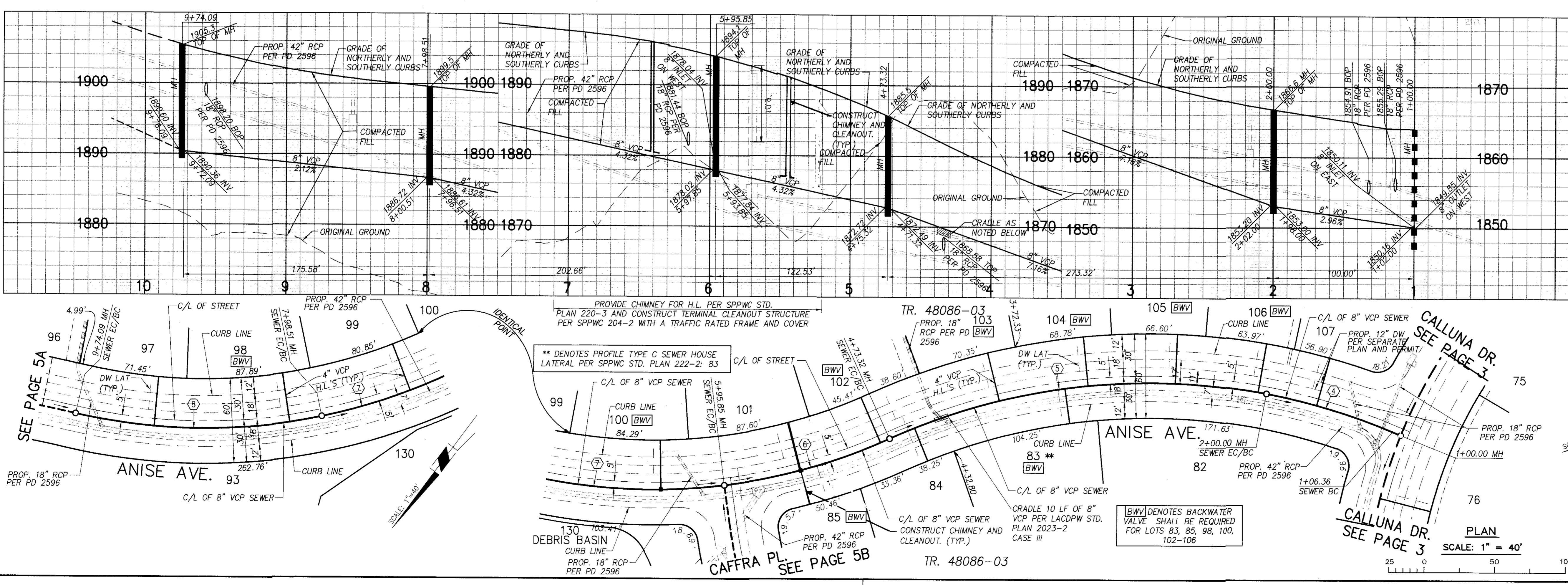
7/26/18
DATE

CURVE DATA TABLE

(NO)	BEARING/DELTA	RADIUS	LENGTH	TANGENT
4	12°03'23"	445.00'	93.64'	46.99'
5	35°11'30"	445.00'	273.32'	141.13'
6	17°20'04"	405.00'	122.53'	61.73'
7	28°40'15"	405.00'	202.66'	103.50'
8	24°50'23"	405.00'	175.58'	89.19'

NO.	REVISION	REVISED BY	APPROVED BY	DATE

REVIEWED BY LAND DEVELOPMENT DIVISION
BY *Brunet Tadele* 08/03/18
SEWER, SUBDIVISION PLAN CHECKING SECTION DATE



[BWV] DENOTES BACKWATER VALVE SHALL BE REQUIRED FOR LOTS 74, 75, 77, 78, 79, 81, 82, 108, 109

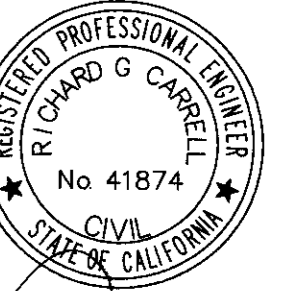
*** DENOTES PROFILE TYPE D SEWER HOUSE LATERAL PER SPPWC STD. PLAN 222-2: 79-82

** DENOTES PROFILE TYPE C SEWER HOUSE LATERAL PER SPPWC STD. PLAN 222-2: 83

[BWV] DENOTES BACKWATER VALVE SHALL BE REQUIRED FOR LOTS 83, 85, 98, 100, 102-106

H:\DATA\10103457\CADD\LAND\DLV\IMPROVE_SEWER\PHASE 3_3457SS002.DWG TAYLOR, JORDAN 7/26/18 9:24 AM

NO. L.A. Co. CHARGES FOR CONNECTIONS
SEE CO. SANITATION DISTRICTS FOR SPECIAL CONNECTION CHARGES
(562) 699-7411, EXT. 2727
DOUBLE SCALE



7/26/18
DATE

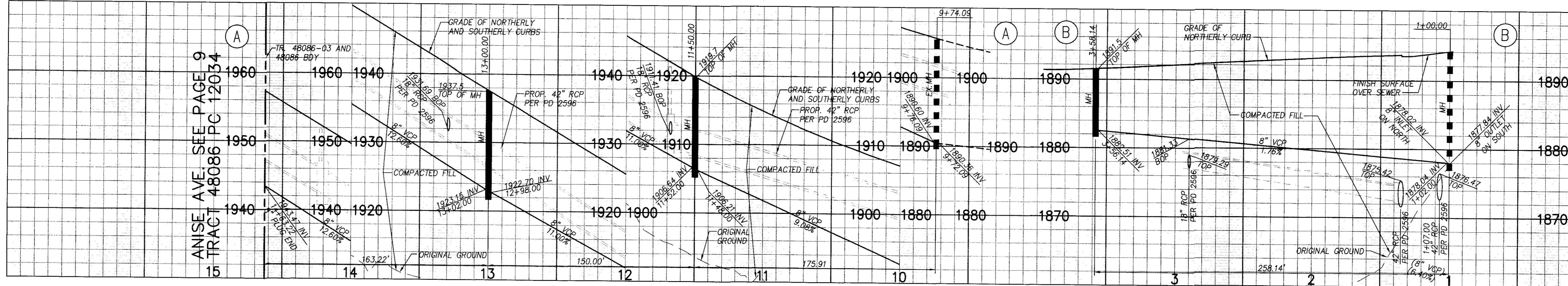
PS007714

PLAN

SCALE: 1" = 40'

NO.	REVISION	REVISED BY	APPROVED BY	DATE

REVIEWED BY LAND DEVELOPMENT DIVISION
By *Burkett Tadelle* 08/03/18
SEWER, SUBDIVISION PLAN CHECKING SECTION
DATE



CURVE DATA TABLE

NO	BEARING/DELTA	RADIUS	LENGTH	TANGENT
1	18°43'37"	355.00'	116.03'	58.54'
2	117°5'41"	895.00'	175.91'	88.24'
3	9°36'10"	895.00'	150.00'	75.18'
4	10°26'56"	895.00'	163.22'	81.84'

*** DENOTES PROFILE TYPE D SEWER HOUSE LATERAL PER SPPWC STD. PLAN 222-2: 93-95

NO. L.A. Co. CHARGES FOR CONNECTIONS
SEE CO. SANITATION DISTRICTS FOR SPECIAL CONNECTION CHARGES
(562) 699-7411, EXT. 2727
DOUBLE SCALE



7/26/18
DATE

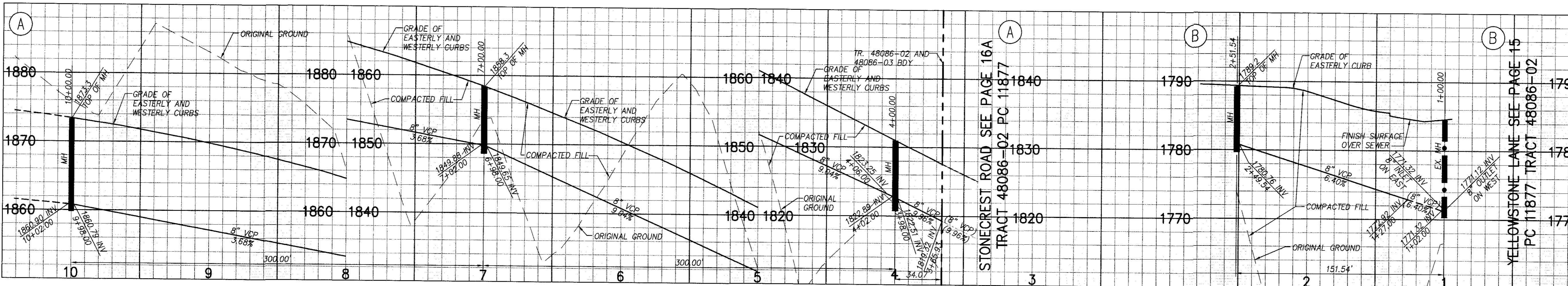
[BWV] DENOTES BACKWATER VALVE SHALL BE REQUIRED FOR LOT 7

PLAN

SCALE: 1" = 40'

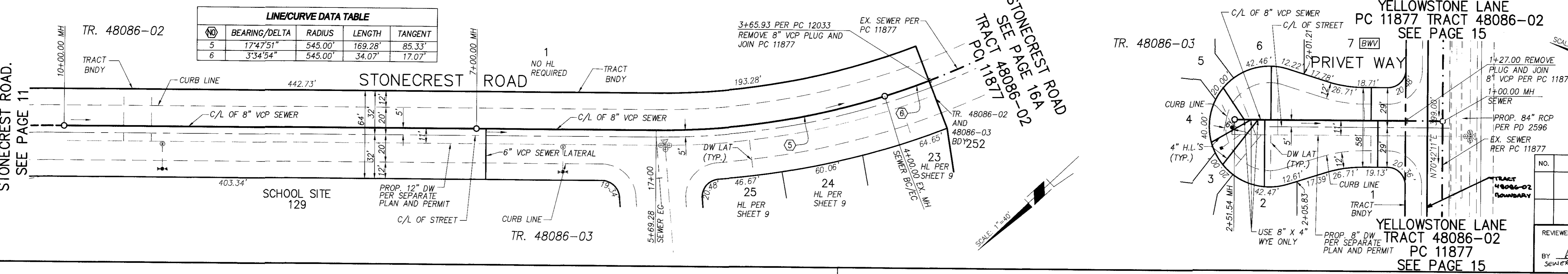
NO.	REVISION	REVISED BY	APPROVED BY	DATE

REVIEWED BY LAND DEVELOPMENT DIVISION
By *Burkett Tadelle* 08/03/18
SEWER, SUBDIVISION PLAN CHECKING SECTION
DATE



LINE/CURVE DATA TABLE

NO	BEARING/DELTA	RADIUS	LENGTH	TANGENT
5	17°47'51"	545.00'	169.28'	85.33'
6	3°34'54"	545.00'	34.07'	17.07'

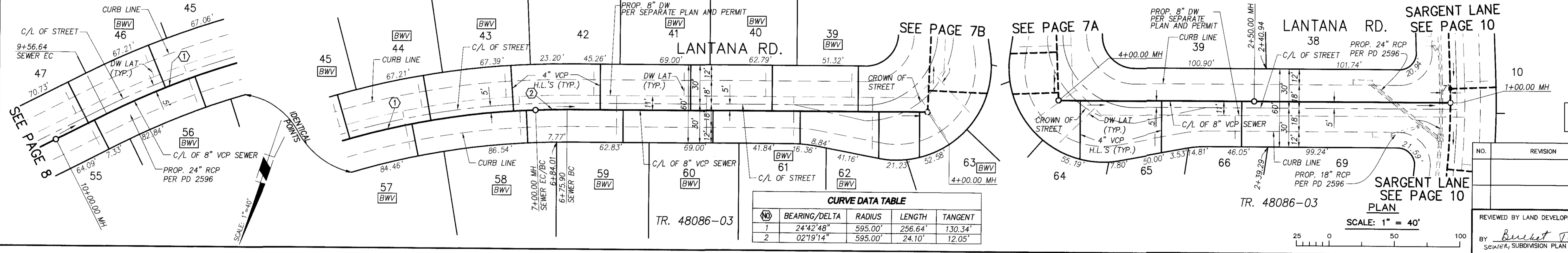
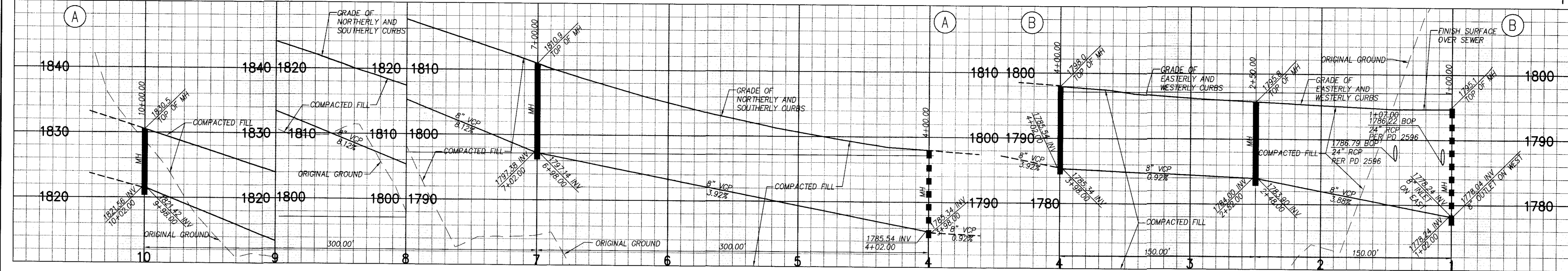


NO. L.A. Co. CHARGES FOR CONNECTIONS
SEE CO. SANITATION DISTRICTS FOR SPECIAL CONNECTION CHARGES
(562) 699-7411, EXT. 2727

DOUBLE SCALE



7/26/18 DATE



NO.	REVISION	REVISED BY	APPROVED BY	DATE

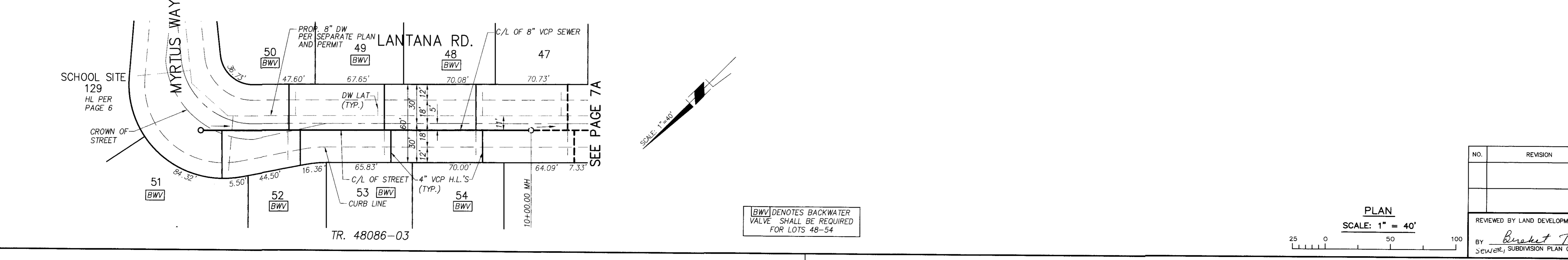
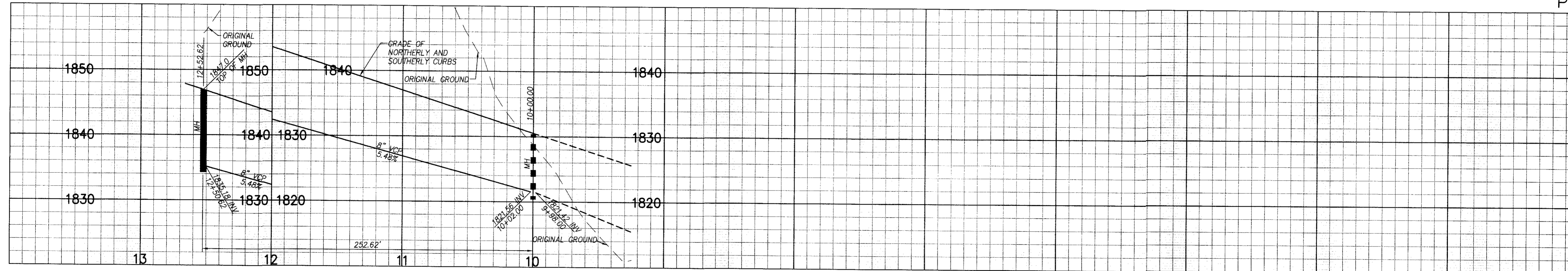
REVIEWED BY LAND DEVELOPMENT DIVISION
BY *Bruce Tadele* 08/03/18
SEWER, SUBDIVISION PLAN CHECKING SECTION DATE

NO. L.A. Co. CHARGES FOR CONNECTIONS
SEE CO. SANITATION DISTRICTS FOR SPECIAL CONNECTION CHARGES
(562) 699-7411, EXT. 2727

DOUBLE SCALE



7/26/18 DATE



NO.	REVISION	REVISED BY	APPROVED BY	DATE

REVIEWED BY LAND DEVELOPMENT DIVISION
BY *Bruce Tadele* 08/03/18
SEWER, SUBDIVISION PLAN CHECKING SECTION DATE

PS007714

T81T 2C 50-28084 ON TACT

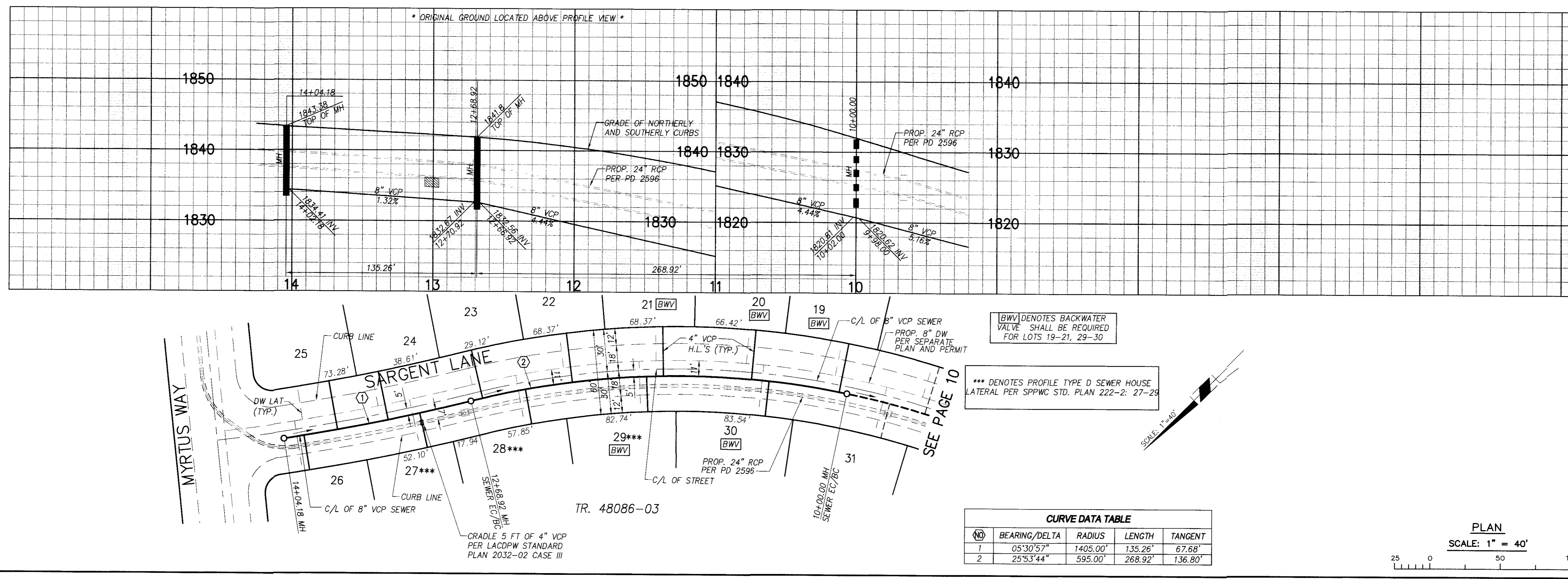
H:\DATA\10103457\CADD\LAND\IMPROVE\SEWER\PHASE 3\3457SS004.DWG TAYLOR, JORDAN 7/26/18 9:24 am

NO. L.A. Co. CHARGES FOR CONNECTIONS
 SEE CO. SANITATION DISTRICTS FOR SPECIAL CONNECTION CHARGES
 (562) 699-7411, EXT. 2727
 DOUBLE SCALE



7/26/18
 PROJECT ENGINEER DATE

PS007714

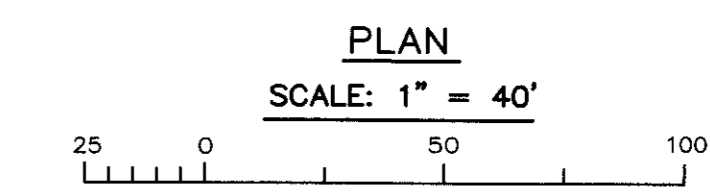


[BWV] DENOTES BACKWATER VALVE SHALL BE REQUIRED FOR LOTS 19-21, 29-30

*** DENOTES PROFILE TYPE D SEWER HOUSE LATERAL PER SPPWC STD. PLAN 222-2: 27-29

CURVE DATA TABLE

NO	BEARING/DELTA	RADIUS	LENGTH	TANGENT
1	05°30'57"	1405.00'	135.26'	67.68'
2	25°53'44"	595.00'	268.92'	136.80'



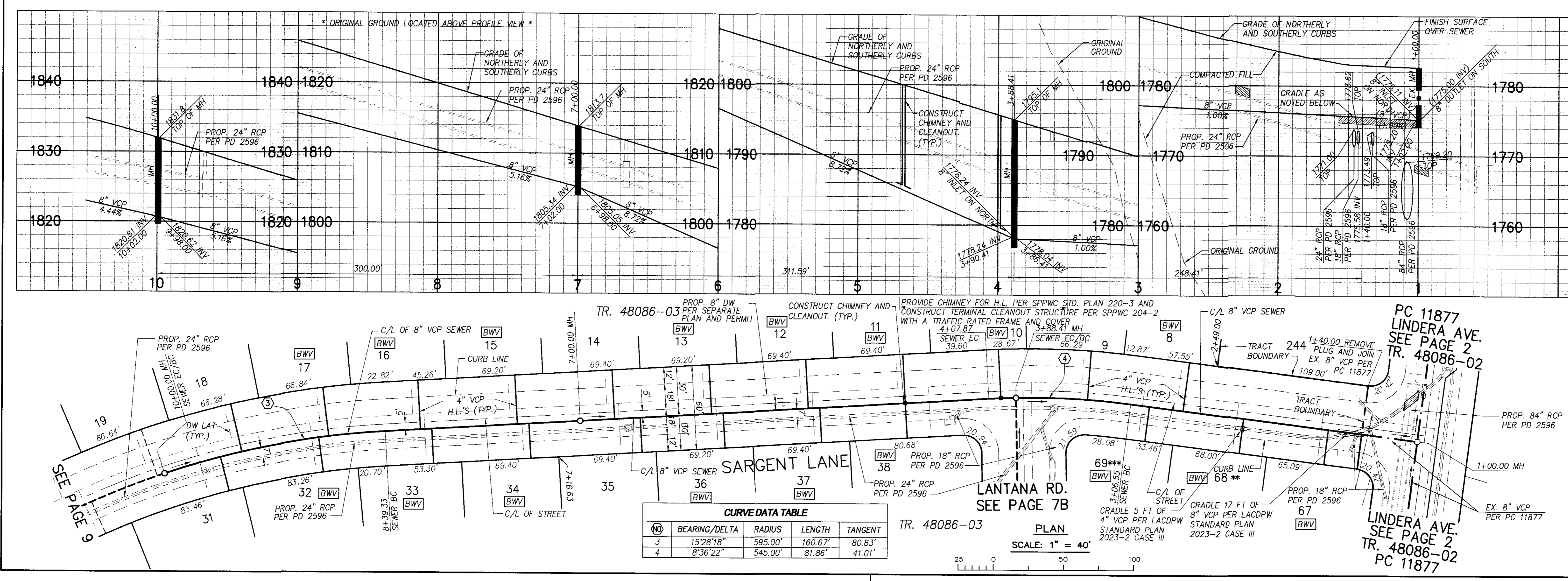
NO.	REVISION	REVISED BY	APPROVED BY	DATE

REVIEWED BY LAND DEVELOPMENT DIVISION
 BY *Berick Tadele* 08/03/18
 SEWER, SUBDIVISION PLAN CHECKING SECTION DATE

NO. L.A. Co. CHARGES FOR CONNECTIONS
 SEE CO. SANITATION DISTRICTS FOR SPECIAL CONNECTION CHARGES
 (562) 699-7411, EXT. 2727
 DOUBLE SCALE



7/26/18
 PROJECT ENGINEER DATE



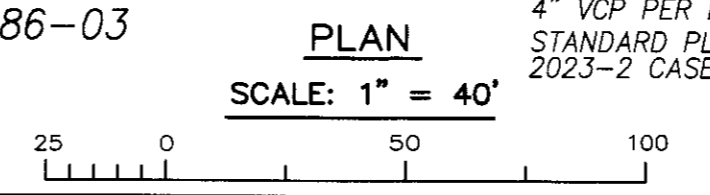
[BWV] DENOTES BACKWATER VALVE SHALL BE REQUIRED FOR LOTS 6, 10-13, 15-17, 32-34, 36-38, 67-69

** DENOTES PROFILE TYPE C SEWER HOUSE LATERAL PER SPPWC STD. PLAN 222-2: 68

*** DENOTES PROFILE TYPE D SEWER HOUSE LATERAL PER SPPWC STD. PLAN 222-2: 69

CURVE DATA TABLE

NO	BEARING/DELTA	RADIUS	LENGTH	TANGENT
3	15°28'18"	595.00'	160.67'	80.83'
4	8°36'22"	545.00'	81.86'	41.01'

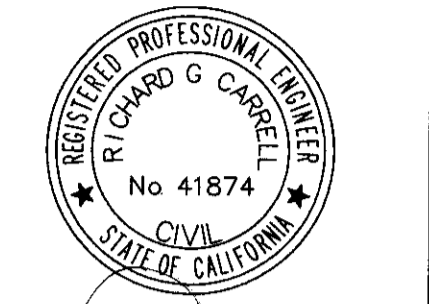


NO.	REVISION	REVISED BY	APPROVED BY	DATE

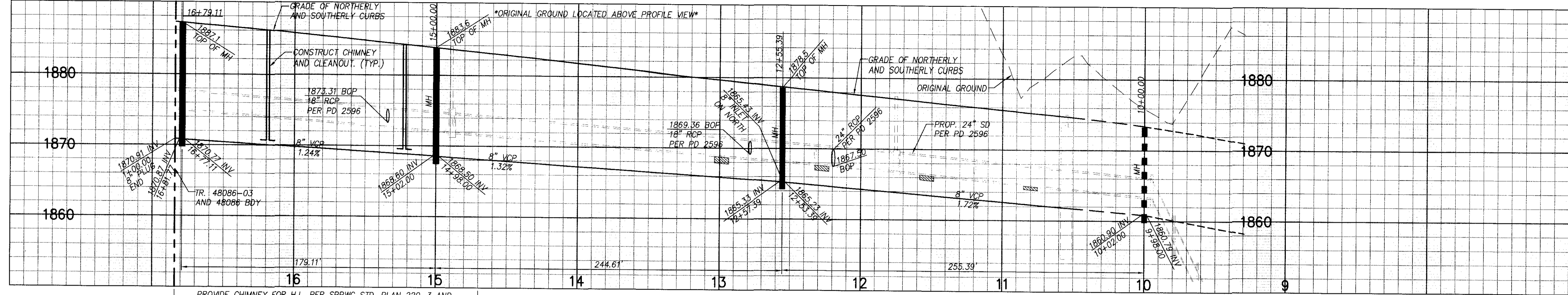
REVIEWED BY LAND DEVELOPMENT DIVISION
 BY *Berick Tadele* 08/03/18
 SEWER, SUBDIVISION PLAN CHECKING SECTION DATE

NO. L.A. Co. CHARGES FOR CONNECTIONS
SEE CO. SANITATION DISTRICTS FOR SPECIAL CONNECTION CHARGES
(562) 699-7411, EXT. 2727

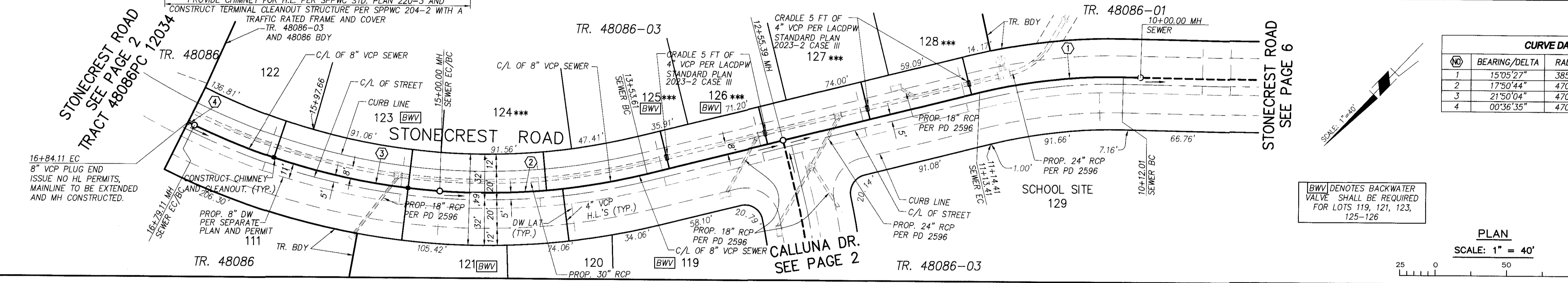
DOUBLE SCALE



7/26/18
PROJECT ENGINEER DATE



STONECREST ROAD
TRACT 48086 PC 12034
SEE PAGE 2



CURVE DATA TABLE

NO.	BEARING/DELTA	RADIUS	LENGTH	TANGENT
1	15°05'27"	385.00'	101.40'	51.00'
2	17°50'44"	470.00'	146.39'	73.79'
3	21°50'04"	470.00'	179.11'	90.65'
4	00°36'35"	470.00'	5.00'	2.50'

*** DENOTES PROFILE TYPE D SEWER HOUSE LATERAL PER SPPWC STD. PLAN 222-2: 124-128

[BWV] DENOTES BACKWATER VALVE SHALL BE REQUIRED FOR LOTS 119, 121, 123, 125-126

NO.	REVISION	REVISED BY	APPROVED BY	DATE

REVIEWED BY LAND DEVELOPMENT DIVISION
BY Berket Tadele 08/03/18
SEWER, SUBDIVISION PLAN CHECKING SECTION DATE

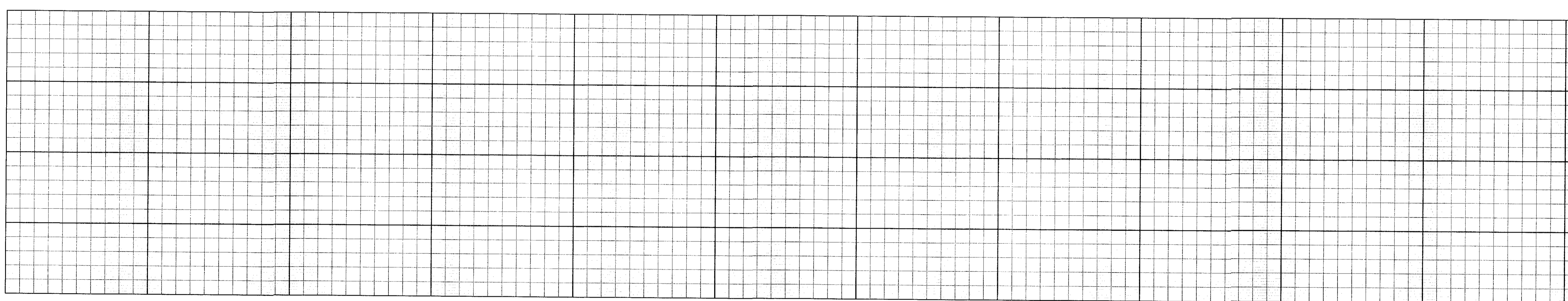
PLAN
SCALE: 1" = 40'
25 0 50 100

NO. L.A. Co. CHARGES FOR CONNECTIONS
SEE CO. SANITATION DISTRICTS FOR SPECIAL CONNECTION CHARGES
(562) 699-7411, EXT. 2727

DOUBLE SCALE



7/26/18
PROJECT ENGINEER DATE



PS007714

NO.	REVISION	REVISED BY	APPROVED BY	DATE

REVIEWED BY LAND DEVELOPMENT DIVISION
BY Berket Tadele SUBDIVISION PLAN CHECKING SECTION DATE

PLAN
SCALE: 1" = 40'
25 0 50 100

H:\PDATA\10103457\CADD\LAND\DLV\IMPROVE\SEWER\PHASE 3\3457SS006.DWG TAYLOR-JORDAN 7/26/18 9:06 am