

B.M. CL 5113 ELEV. 1381.512
 ROB TAG IN WLY WALL C B 20FT N/O C/L
 NADAL ST & 74FT E/O C/L WHITES CYN RD 7FT
 E/O BCR & NE COR
 NEWHALL QUAD. (1983)

Per Title 20.24.140 of LA County Code, obstructing access to sewer facilities is prohibited. No object difficult to remove shall be located over the sewer easement(s) as to interfere with ready access to sewer facilities.

- A. NOTES:**
- Every effort should be made to eliminate the discharge of non-stormwater from the project site at all times.
 - Eroded sediments and other pollutants must be retained on-site and may not be transported from the site via sheet flow, swales, area drains, natural drainage courses or wind.
 - Stockpiles of earth and other construction related materials must be protected from being transported from the site by the force of wind or water.
 - Fuels, oils, solvents, and other toxic materials must be stored in accordance with their listing and are not to contaminate the soil and surface waters. All approved storage containers are to be protected from the weather. Spills must be cleaned up immediately and disposed of in a proper manner. Spills may not be washed into the drainage system.
 - Excess or waste concrete may not be washed into the public way or any other drainage system. Provisions shall be made to retain concrete wastes on-site until they can be disposed of as solid waste.
 - Trash and construction related solid wastes must be deposited into a covered receptacle to prevent contamination of rainwater and dispersal by wind.
 - Sediments and other materials may not be tracked from the site by vehicle traffic. The construction entrance roadways must be stabilized so as to inhibit sediments from being deposited into the public way. Accidental depositions must be swept up immediately and may not be washed down by rain or other means.
 - Any slopes with disturbed soils or denuded of vegetation must be stabilized so as to inhibit erosion by wind and water.
 - The following BMPs as outlined in, but not limited to, the latest edition of the California BMP Handbook (Construction) or Caltrans Stormwater Quality Handbooks (Construction Site BMP Manual), may apply during the construction of this project (additional measures may be required if deemed appropriate by the Project Engineer or the Building Official).

- EROSION CONTROL**
- EC1 SCHEDULING
 - EC2 PRESERVATION OF EXISTING VEGETATION
 - EC3 HYDRAULIC MULCH
 - EC4 HYDROSEEDING
 - EC5 SOLID BUNDERS
 - EC6 STRAW MULCH
 - EC7 GEOTEXTILES & MATS
 - EC8 WOOD MULCHING
 - EC9 EARTH DIKES AND DRAINAGE SWALES
 - EC10 VELOCITY DISSIPATION DEVICES
 - EC11 SLOPE DRAINS
 - EC12 STREAMBANK STABILIZATION
 - EC13 RESERVED
 - EC14 COMPOST BLANKETS
 - EC15 SOIL PREPARATION/ROUGHENING
 - EC16 NON-VEGETATED STABILIZATION
- WIND EROSION CONTROL**
- WE1 WIND EROSION CONTROL
- EQUIPMENT TRACKING CONTROL**
- TC1 STABILIZED CONSTRUCTION ENTRANCE EXIT
 - TC2 STABILIZED CONSTRUCTION ROADWAY
 - TC3 ENTRANCE/OUTLET TIRE WASH

- NON-STORM WATER MANAGEMENT**
- NS1 WATER CONSERVATION PRACTICES
 - NS2 DENATURING OPERATIONS
 - NS3 PAVING AND GRINDING OPERATIONS
 - NS4 TEMPORARY STREAM CROSSING
 - NS5 CLEAR WATER DIVERSION
 - NS6 ILLIOT CONNECTION/DISCHARGE
 - NS7 POTABLE WATER IRRIGATION
 - NS8 VEHICLE AND EQUIPMENT CLEANING
 - NS9 VEHICLE AND EQUIPMENT FUELING
 - NS10 VEHICLE AND EQUIPMENT MAINTENANCE
 - NS11 PILE DRIVING OPERATIONS
 - NS12 CONCRETE CURING
 - NS13 CONCRETE FINISHING
 - NS14 MATERIAL AND EQUIPMENT USE
 - NS15 DEMOLITION ADJACENT TO WATER
 - NS16 TEMPORARY BATCH PLANTS
- WASTE MANAGEMENT AND MATERIALS POLLUTION CONTROL**
- WM1 MATERIAL DELIVERY AND STORAGE
 - WM2 MATERIAL USE
 - WM3 STOCKPILE MANAGEMENT
 - WM4 SPILL PREVENTION AND CONTROL
 - WM5 SOLID WASTE MANAGEMENT
 - WM6 HAZARDOUS WASTE MANAGEMENT
 - WM7 CONTAMINATION SOIL MANAGEMENT
 - WM8 CONCRETE WASTE MANAGEMENT
 - WM9 SANITARY/SEPTIC WASTE MANAGEMENT
 - WM10 LIQUID WASTE MANAGEMENT
 - WM11 TEMPORARY SEDIMENT CONTROL
 - WM12 SILT FENCE
 - WM13 SEDIMENT BASIN
 - WM14 SEDIMENT TRAP
 - WM15 CHECK DAM
 - WM16 FIBER ROLLS
 - WM17 GRAVEL BAG BERM
 - WM18 STREET SWEEPING AND VACUUMING
 - WM19 SANDBAG BARRIER
 - WM20 STRAW BALE BARRIER
 - WM21 STORM DRAIN INLET PROTECTION
 - WM22 ACTIVE TREATMENT SYSTEMS
 - WM23 TEMPORARY SILT DIKE
 - WM24 COMPOST SOCKS & BERMS
 - WM25 BIOPLETHER BAGS

- B. STANDARD PLANS:**
- The following latest revised standard plans on file in the office of the following department shall apply in the construction of this project.
- LOS ANGELES COUNTY DEPARTMENT OF PUBLIC WORKS
- | | | | |
|--------|--|--------|--|
| 2000-1 | Lignent for sanitary sewer plans and profiles and district maps. | 2021-1 | Bedding for sewer pipe. |
| 2002-1 | Precast concrete shallow manhole. | 2023-2 | Cradling and encasement. |
| 2003-2 | Reinforced precast concrete manhole. | 2024-1 | WYE or TEE support. |
| 2004-1 | Rectangular shallow manhole. | 2026-1 | Erosion protection in steep slopes. |
| 2014-1 | Rectangular manhole frame and cover. | 2027-1 | Allowable trench widths. |
| 2015-1 | Standard manhole step. | 6008-1 | Minimum public safety requirements. |
| | | 2100-1 | Requirements for sanitary sewers near water mains. |
- STANDARD PLANS FOR PUBLIC WORKS CONSTRUCTION (SPWVC)**
- | | | | |
|-------|--|-------|---------------------------------------|
| 200-3 | Precast Concrete Sewer Manhole | 220-3 | Chimneys |
| 204-2 | Terminal cleanout structure | 221-2 | Pipe anchors and backfill stabilizers |
| 207-2 | Precast reinforced concrete manhole base | 222-2 | House connection |
| 209-2 | Breaking into existing manholes | 223-2 | House connection remodeling |
| 210-3 | Manhole frame and cover locking type | 225-2 | Blanket protection for pipes |

NOTE:
 Bedding Material shall conform with a sand equivalent not less than 20.

- COUNTY SANITATION DISTRICTS (CSD) NOTES:**
- NO CONNECTION FOR THE DISPOSAL OF INDUSTRIAL WASTES SHALL BE MADE TO SEWERS SHOWN ON THESE PLANS UNTIL A PERMIT FOR INDUSTRIAL WASTE WATER DISCHARGE HAS BEEN ISSUED BY CSD FOR SAID CONNECTION.
 - PRIOR TO FINAL ACCEPTANCE OF THE PROJECT, NOTIFY THE CSD SUPERINTENDENT OF MAINTENANCE AT (661) 257-4809 TO REPORT COMPLETION OF THIS LOCAL SEWER THAT INDIRECTLY DISCHARGES INTO THE CSD SEWER SYSTEM.

PRIVATE CONTRACT SEWER GENERAL NOTES

- A sewer construction permit shall be obtained and a fee paid for construction inspection and record plans to the County of Los Angeles Department of Public Works at the Permit Counter, 400 South Fremont Avenue, 3rd Floor, Alhambra, at least 72 hours prior to starting work under this permit. Copies of all other required permits, such as road excavation, Caltrans, etc., must be filed with the permit application.
- When work is within a contract city, a sewer construction permit shall be obtained and a fee paid for construction inspection and record plans to the City. The contractor must contact the Director of Public Works of that City to determine the location to pay the inspection fees.
- Prior to issuance of any permit, the contractor shall file a permit for excavations and trenches from the State of California Division of Industrial Safety, and a Certificate of Worker's Compensation Insurance with the Department of Public Works named as the Certificate Holder or both as applicable. The County of Los Angeles Department of Public Works shall be notified 30 days prior to cancellation of the insurance policy.
- If work is done in a State Highway, a permit must be obtained from the State of California Division of Highways, 120 South Spring Street, Los Angeles, California.
- The contractor shall contact the district office listed on the "Application for Construction Permit" to arrange for an acceptable construction start date.
- Approval of this plan by the County of Los Angeles Department of Public Works does not constitute a representation as to accuracy of the location of the existence or nonexistence of any underground utility pipes or structures within the limits of this project. This note applies to all pages.
- All work shall be in accordance with the latest approved edition of the "Standard Specifications for Public Works Construction" including supplements (if there is any) the latest "Additions and Amendments to the Standard Specifications for Public Works Construction," and shall be prosecuted only in the presence of the County of Los Angeles Department of Public Works.
- The contractor's attention is directed to Section 7-10.4.2 of the "Standard Specifications for Public Works Construction" in regard to safety orders and shall conform to the "Minimum Public Safety Requirement" as shown on County of Los Angeles Department of Public Works Standard Plan No. 6008-1.
- Elevations are in feet above U.S.C. and G.S. sea level datum of 1988.
- No revisions shall be made in these plans without the approval of the County of Los Angeles Department of Public Works.
- No representative of the County of Los Angeles Department of Public Works will survey or layout any portion of the work.
- Grades to which this improvement is to be constructed are shown on plans and profiles. Grade point for top of curbs, centerline of streets, or centerline of alleys, is shown by circles on profiles at all points between said designed points. The grade shall be established so as to conform to a straight line drawn between said design points.
- The private engineer shall furnish the County of Los Angeles Department of Public Works with grade sheets and stationing for all house laterals and "Y" and "T" branches and shall provide stakes for them at their proper locations with stationing plainly marked. All house laterals shall be constructed in a straight alignment at right angles from the main line sewer except as shown on the plans. House laterals from chimneys shall not have an angle of less than 45 degrees with the M.L. sewer. Any change in alignment shall be requested in writing by the private engineer.
- The private engineer shall furnish the house lateral depth at the property line below the top of curb elevation for each house lateral on the grade sheet.
- An approved backwater valve is required when the pad is lower in elevation than the top of the next upstream manhole.
- Contact Environmental Programs Division for an Industrial Waste Discharge Permit at (626) 458-3517.

BACKWATER VALVES SHALL BE NECESSARY FOR LOTS 151 & 159.

LOT NO. 243, 244, 248 & 253 ARE RESTRICTED FROM CONSTRUCTION OF BUILDINGS AND WILL NOT BE SERVED BY THIS SEWER.

ISSUE NO HOUSE LATERAL CONNECTION PERMITS UNTIL OUTLET SEWER PC 12354 IS ACCEPTED FOR PUBLIC USE BY THE COUNTY OF LOS ANGELES.

The developer shall be responsible for the continued maintenance of PC12109C sanitary sewer until the County formally accepts it for maintenance. All manholes, manholes and laterals shall be protected from damage and infiltration.

EXISTING SEWER SYSTEM SHALL BE OPERATIONAL AT ALL TIMES DURING CONSTRUCTION. NOTIFY AFFECTED HOMEOWNERS AT LEAST 72 HRS IN ADVANCE.

SEWER VIDEO OF ALL SEGMENTS SHALL BE SUBMITTED PRIOR TO PARTIAL FIELD ACCEPTANCE (95%) AND COMPLETED FIELD ACCEPTANCE (98%). FINAL MAP AND AS-BUILT SEWER PLANS SHALL BE SUBMITTED PRIOR TO PARTIAL FIELD ACCEPTANCE.

SEWER LATERALS SHOWN ON PLANS ARE FOR REFERENCE ONLY.

ALL SANITARY SEWER MANHOLE SHAFTS AND FRAMES SHALL BE WATERTIGHT WITH BUTYL RUBBER MASTIC JOINT SEALING COMPOUND OR APPROVED EQUAL BY THE L.A. COUNTY PUBLIC WORKS DEPT.

NOTES:
 Any damage to the sewer line shall be the responsibility of the contractor/owner. All grading and construction occurring over and the vicinity of the existing sewer shall be performed in the presence of a County Inspector. Where applicable, the sewers shall be protected per Std. Plan 2023-2 at all significant crossings.

PROFILE, ALIGNMENT, AND GRADE OF
SANITARY SEWERS
 TO BE CONSTRUCTED IN
 TRACT NO. 60922-01, PC NO. 12109C
 3 SHEETS: 6 PAGES
 COUNTY OF LOS ANGELES CALIFORNIA
 CSMD INDEX N-1416

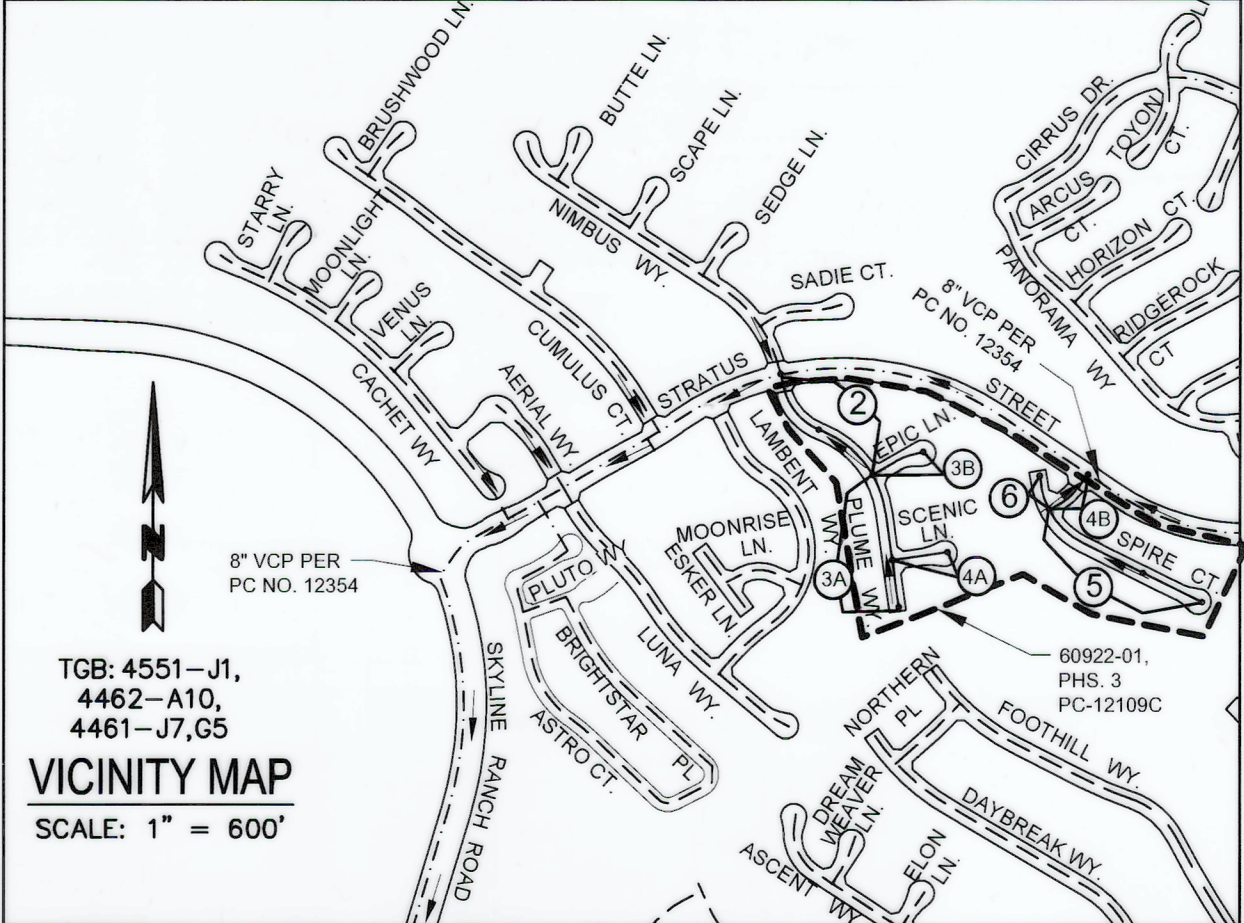
MARK PESTRELLA
 LA COUNTY DIRECTOR OF PUBLIC WORKS
 APPROVED BY LAND DEVELOPMENT DIVISION
 2/26/18
 DATE
 ASSISTANT DIVISION ENGINEER
 2/22/18
 DATE
 SUBMITTED BY: *Januzio Jalans*
 FINAL MAPS, SEWER AND LANDSCAPING SUBDIVISION PLAN CHECKING SECTION DATE

SANTA CLARITA VALLEY SANITATION DISTRICT
 OF LOS ANGELES COUNTY, CALIFORNIA
 GRACE ROBINSON HYDE - CHIEF ENGINEER AND GENERAL MANAGER
 APPROVED BY: *Christine Green* DATE: 3/12/2018
 OFFICE ENGINEER

CITY OF SANTA CLARITA
 TRACT/PARCEL ADDRESS: TR 60922-01 PH 3 PC NO. 12109C
 CITY OF SANTA CLARITA DISCHARGE, □-OUTLET APPROVED.
 WE APPROVE THIS SEWER AREA STUDY PLAN WITH THE FOLLOWING
 FINDINGS WITHIN THE CITY □-NO MITIGATION □-WITH MITIGATION
 254/SFP/WH
 APPROVED BY: *Scott A. Newman* (DIRECTOR OF PUBLIC WORKS) DATE: 3/18/18

Engineer's/Surveyor's Statement Regarding the Presence of Monuments within project limits
 I hereby attest that I have located and referenced on these plans the monuments existing prior to construction to ensure perpetuation of their location in accordance with section 8771 of the business and professions code. I further attest that I have performed a record search and field inspection to identify existing monuments; shall set sufficient controlling, witness, and permanent monuments; and shall file the requisite corner record or record of survey of the references with the County surveyor.
 Engineer/Surveyor: *John W. RSTB* Date: 2-9-2018
 Seal and Signature

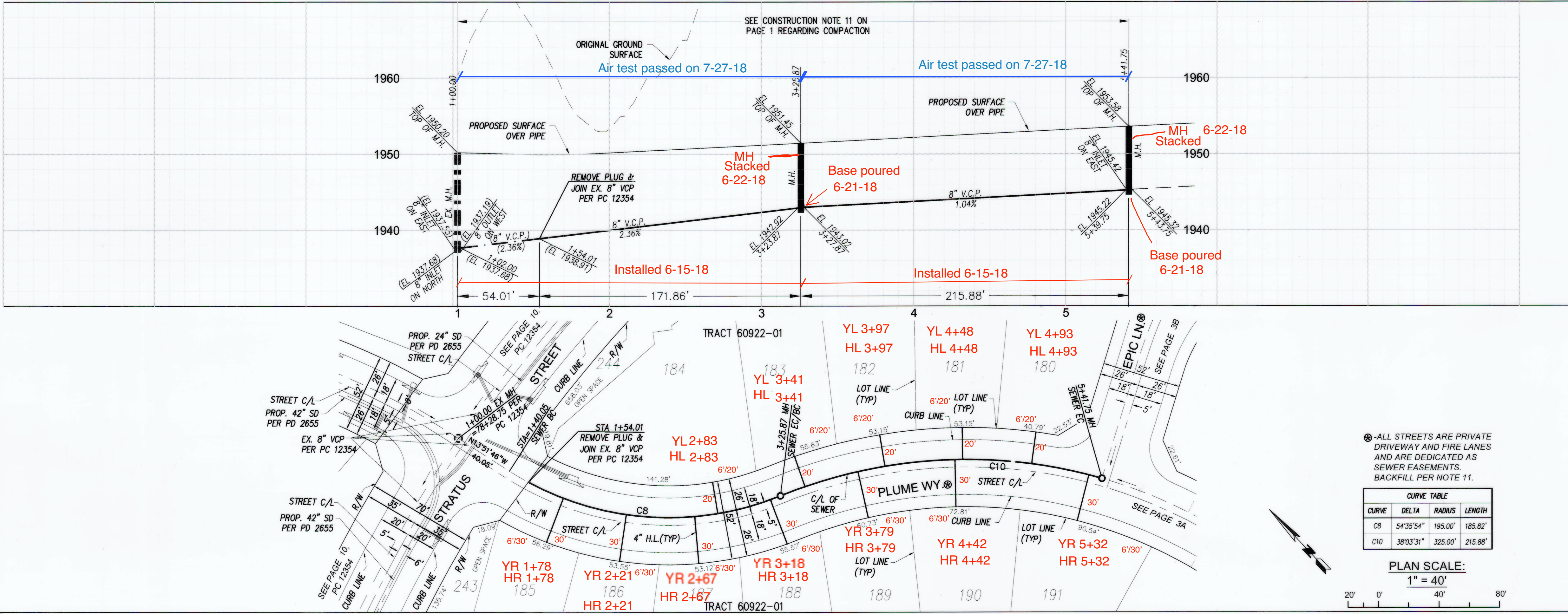
PRIVATE ENGINEERS NOTICE TO CONTRACTORS:
 THE EXISTENCE AND LOCATION OF ANY UNDERGROUND UTILITY LINES OR STRUCTURES SHOWN ON THESE PLANS IS REQUIRED BY A SEARCH OF AVAILABLE RECORDS TO THE BEST OF OUR KNOWLEDGE. THERE ARE NO EXISTING UTILITIES EXCEPT AS SHOWN ON THIS MAP. THE CONTRACTOR IS REQUIRED TO TAKE PRECAUTIONARY MEASURES TO PROTECT THE UTILITY LINES SHOWN AND ANY OTHER LINES NOT OF RECORD OR NOT SHOWN ON THIS DRAWING. PRIOR TO EXCAVATION THE CONTRACTOR SHALL CALL TOLL FREE 1-800-422-4133 TO VERIFY THE UNDERGROUND LOCATION OF GAS AND TELEPHONE LINES. THE CONTRACTOR SHALL ALSO CALL MR. RAY CUMMINGS OF GENERAL TELEPHONE COMPANY AT 1-805-948-4871 SO THAT THEY CAN MARK THE LOCATION OF UNDERGROUND TELEPHONE LINES.
 PROJECT ENGINEER: *RCE* No. 32363 DATE: 2/9/18



ALL STREETS ARE PRIVATE DRIVEWAY AND FIRE LANES AND ARE DEDICATED AS SEWER EASEMENTS PER TRACT 60922-01.

BUILDING AND SAFETY DISTRICT OFFICE: SANTA CLARITA
 CSMD INDEX NO. N-1416
 P.C. 12109C TR. NO. 60922-01-PHS 3
 THOMAS GUIDE PAGE: 4651-J1, 4462-A10, 4461-J7, G5

NO.	REVISION	REVISED BY	APPROVED BY	DATE

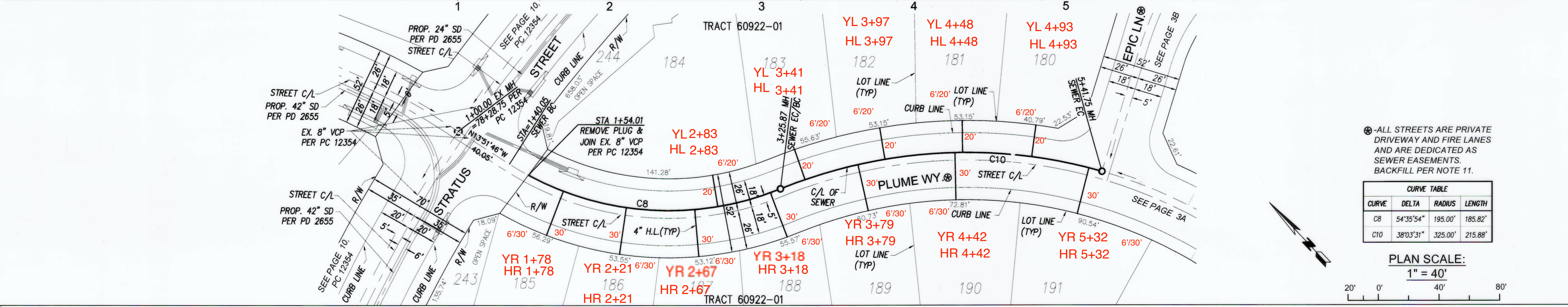


NO LA COUNTY CHARGES FOR CONNECTION

SEE COUNTY SANITATION DISTRICTS FOR SPECIAL CONNECTION CHARGES
 TEL: (662) 968-4288 EX. 2727

SCALE: VERT. 1" = 8'
 HORIZ. 1" = 40'
 DOUBLE SCALE

REGISTERED PROFESSIONAL ENGINEER
 CRAIG YOUNG
 No. 32363
 Exp. 12-31-18
 CIVIL
 STATE OF CALIFORNIA
 2/9/18



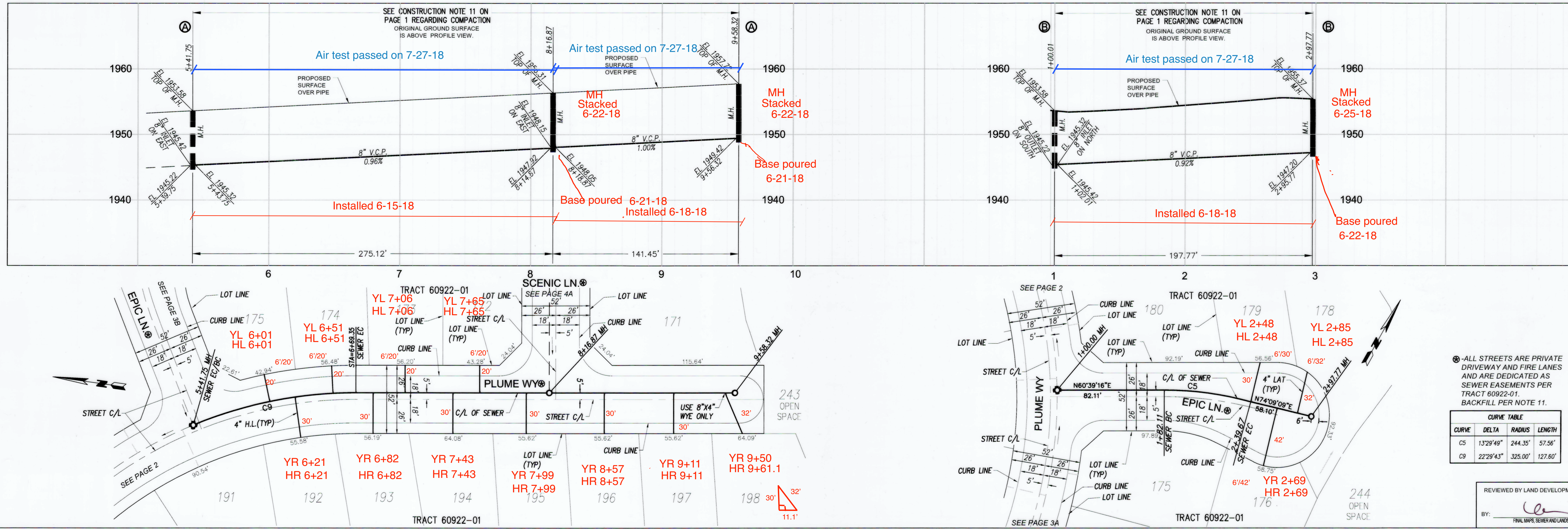
SANITARY SEWER PLANS FOR PHASE NO. 3
 TRACT NO. 60922-01 PC NO. 12109C

REVIEWED BY LAND DEVELOPMENT DIVISION
 BY: *Januzio Jalans* DATE: 2/21/18
 FINAL MAPS, SEWER AND LANDSCAPING SUBDIVISION PLAN CHECKING SECTION

COUNTY OF LOS ANGELES DEPARTMENT OF PUBLIC WORKS

SIKAND ENGINEERING ASSOCIATES
 CONSULTING ENGINEERS
 15230 BURBANK BLVD.,
 VAN NUYS, CALIFORNIA 91411 (818) 787-8550

EIMP2017000041 DPWLACOUNTY.GOV



NO LA COUNTY CHARGES FOR CONNECTION

SEE COUNTY SANITATION DISTRICTS FOR SPECIAL CONNECTION CHARGES

TEL: (562) 908-4288 EX. 2727

SCALE: VERT. 1" = 8'
HORIZ. 1" = 40'

DOUBLE SCALE

SKYLINE RANCH IMPROVEMENTS 60922-01, PHASE 3

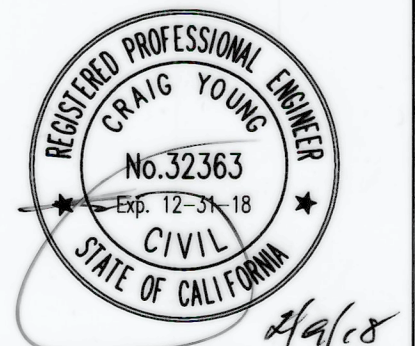
PLAN

0' 20' 40' 80'

SCALE: 1" = 40'

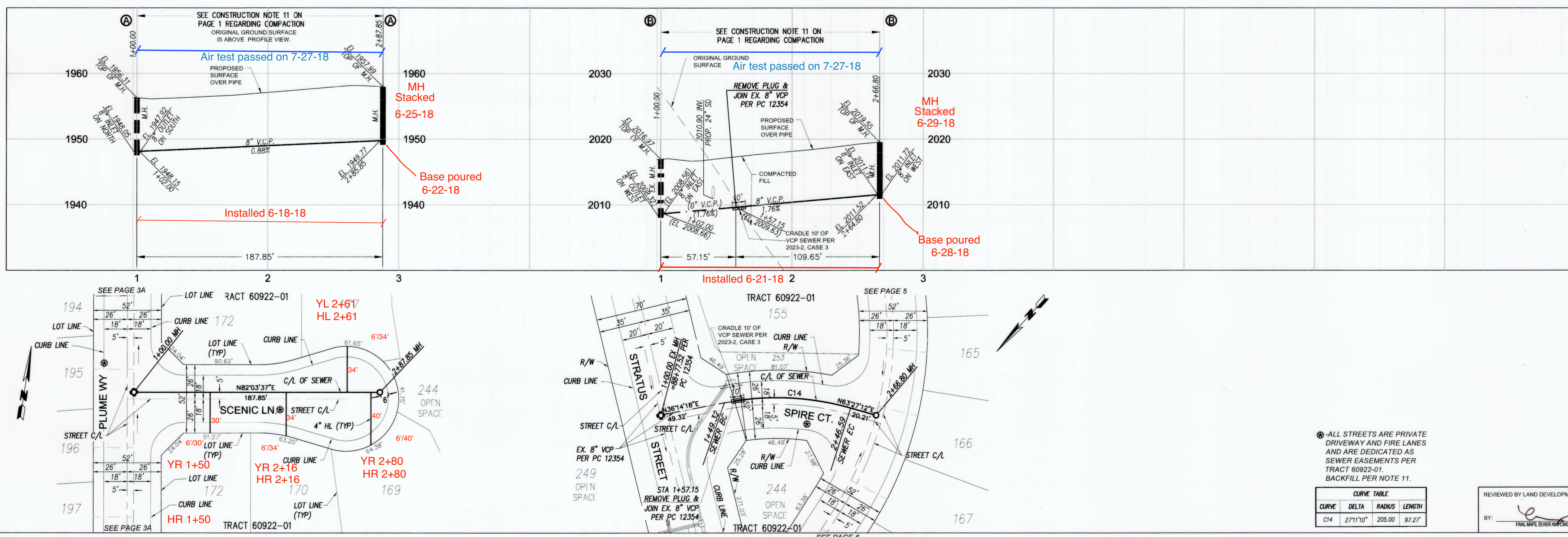
ALL STREETS ARE PRIVATE DRIVEWAY AND FIRE LANES AND ARE DEDICATED AS SEWER EASEMENTS PER TRACT 60922-01 BACKFILL PER NOTE 11.

CURVE	DELTA	RADIUS	LENGTH
C5	132°49'	244.35'	57.56'
C9	22°29'43"	325.00'	127.60'



REVIEWED BY LAND DEVELOPMENT DIVISION

BY: [Signature] DATE: 2/2/18



NO LA COUNTY CHARGES FOR CONNECTION

SEE COUNTY SANITATION DISTRICTS FOR SPECIAL CONNECTION CHARGES

TEL: (562) 908-4288 EX. 2727

SCALE: VERT. 1" = 8'
HORIZ. 1" = 40'

DOUBLE SCALE

SKYLINE RANCH IMPROVEMENTS 60922-01, PHASE 3

PLAN

0' 20' 40' 80'

SCALE: 1" = 40'

ALL STREETS ARE PRIVATE DRIVEWAY AND FIRE LANES AND ARE DEDICATED AS SEWER EASEMENTS PER TRACT 60922-01 BACKFILL PER NOTE 11.

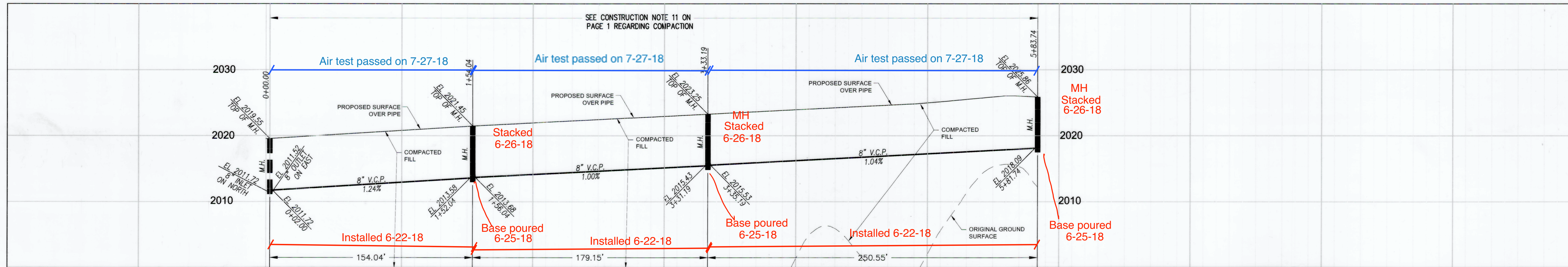
CURVE	DELTA	RADIUS	LENGTH
C14	27°11'0"	205.00'	97.27'



REVIEWED BY LAND DEVELOPMENT DIVISION

BY: [Signature] DATE: 2/2/18

18' MO 80833-01 BC 13108C SHEET 2



NO LA COUNTY CHARGES FOR CONNECTION

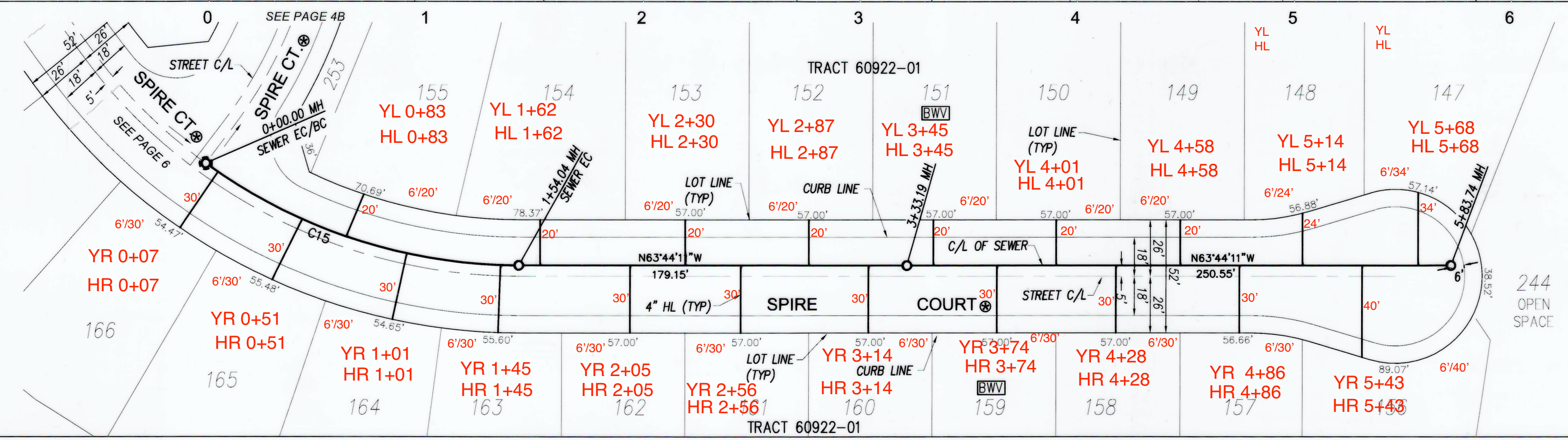
SEE COUNTY SANITATION DISTRICTS FOR SPECIAL CONNECTION CHARGES

TEL. (562) 908-4288 EX. 2727

SCALE: VERT. 1" = 8'
HORIZ. 1" = 40'

DOUBLE SCALE

SKYLINE RANCH IMPROVEMENTS 60922-01, PHASE 3



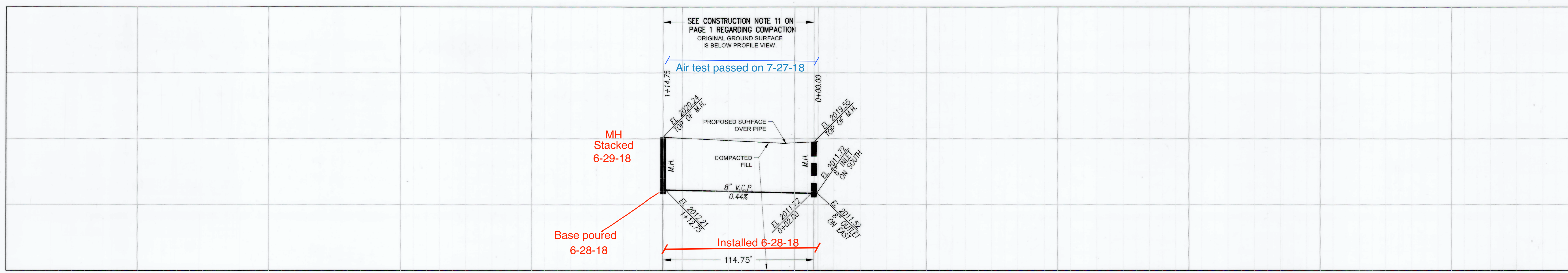
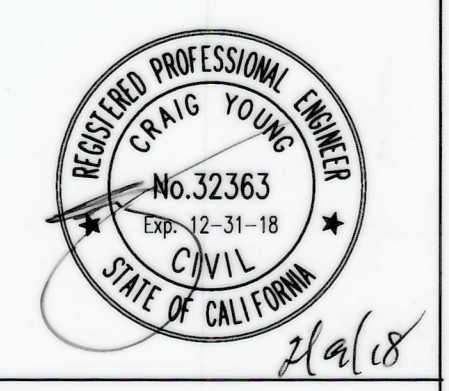
Ⓢ ALL STREETS ARE PRIVATE DRIVEWAY AND FIRE LANES AND ARE DEDICATED AS SEWER EASEMENTS PER TRACT 60922-01. BACKFILL PER NOTE 11.

Ⓢ BWV - BACK WATER VALVES SHALL BE REQUIRED.

CURVE TABLE			
CURVE	DELTA	RADIUS	LENGTH
C15	36°01'26"	245.00'	154.04'

REVIEWED BY LAND DEVELOPMENT DIVISION

BY: *[Signature]* DATE: 2/21/18



NO LA COUNTY CHARGES FOR CONNECTION

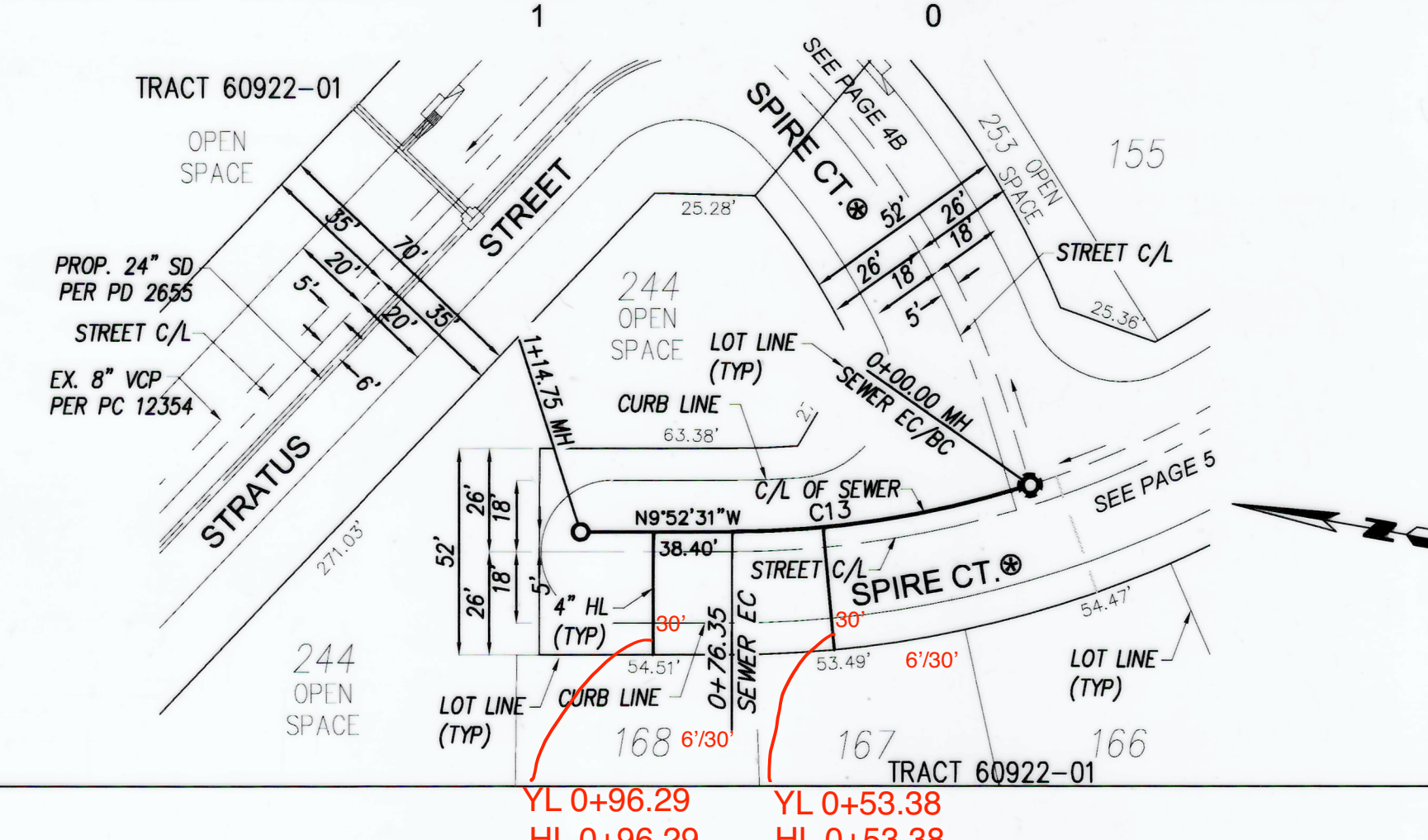
SEE COUNTY SANITATION DISTRICTS FOR SPECIAL CONNECTION CHARGES

TEL. (562) 908-4288 EX. 2727

SCALE: VERT. 1" = 8'
HORIZ. 1" = 40'

DOUBLE SCALE

SKYLINE RANCH IMPROVEMENTS 60922-01, PHASE 3



Ⓢ ALL STREETS ARE PRIVATE DRIVEWAY AND FIRE LANES AND ARE DEDICATED AS SEWER EASEMENTS PER TRACT 60922-01. BACKFILL PER NOTE 11.

Ⓢ BWV - BACK WATER VALVES SHALL BE REQUIRED.

CURVE TABLE			
CURVE	DELTA	RADIUS	LENGTH
C13	175°19'	245.00'	76.35'

REVIEWED BY LAND DEVELOPMENT DIVISION

BY: *[Signature]* DATE: 2/21/18



SHEET 3