

PROFILE, ALIGNMENT AND GRADE OF SANITARY SEWER

TO BE CONSTRUCTED IN PM 71223 PC NO. 12148 3 SHEETS: 6 PAGES

COUNTY OF LOS ANGELES CALIFORNIA

GAIL FARBER DIRECTOR OF PUBLIC WORKS APPROVED BY LAND DEVELOPMENT DIVISION BY: [Signature] DATE: 6/13/13 SUBMITTED BY: [Signature] DATE: 6/6/13

LAS VIRGENES MUNICIPAL WATER DISTRICT (OUTLET AGENCY) COUNTY OF LOS ANGELES, CALIFORNIA APPROVED BY: [Signature] DATE: 7/9/13

PS007532

PRIVATE ENGINEERS NOTICE TO CONTRACTORS:

THE EXISTENCE AND LOCATION OF ANY UNDERGROUND UTILITY PIPES OR STRUCTURES SHOWN ON THESE PLANS IS REQUIRED BY A SEARCH OF AVAILABLE RECORDS TO THE BEST OF OUR KNOWLEDGE...

[Signature] DATE: 4-2-2013

NO. L.A. Co. DPW CHARGES FOR CONNECTIONS SEE LVMD FOR SPECIAL CONNECTION CHARGES TEL: (562) 908-4288 EX. 2727 (818) 251-2100 DOUBLE SCALE

BENCHMARK:

BM: Y11455 ELEV=875.042 (METERS=286.714) DPW BM TAG S WALL ROCK & CONC DRAIN 8.5M(28') W/O C/L KANAN RD & 483M(0.3M) N/O TROUTDALE DR 20M(66') N/W/O PP (46M(151') S/O MI M/RK #418)

Per Title 20.24.140 of LA County Code,

abstracting access to sewer facilities is prohibited. No object difficult to remove shall be located over the sewer easement(s) as to interfere with ready access to sewer facilities.

STORMWATER POLLUTION PLAN NOTES

- A. NOTES: 1. Eroded sediments and other pollutants must be retained on site and may not be transported from the site via sheetflow, swales, area drains, natural drainage courses or wind. 2. Stockpiles of earth and other construction related materials must be protected from being transported from the site by the forces of wind or water. 3. Fuels, oils, solvents, and other toxic materials must be stored in accordance with their listing and are not to contaminate the soil and surface waters. All approved storage containers are to be protected from the weather. Spills must be cleaned up immediately and disposed of in a proper manner. Spills may not be washed into the drainage system. 4. Excess or waste concrete may not be washed into the Public way or any other drainage system. Provisions shall be made to retain concrete wastes on site until they can be disposed of as solid waste. 5. Trash and construction related solid wastes must be deposited into a covered receptacle to prevent contamination of rainwater and dispersed by wind. 6. Sediments and other materials may not be tracked from the site by vehicle traffic. The construction entrance roadways must be stabilized so as to inhibit sediments from being deposited into the public way. Accidental depositions must be swept up immediately and may not be washed down by rain or other means. 7. Any slopes with disturbed soils or denuded of vegetation must be stabilized so as to inhibit erosion by wind and water. 8. The following BMPs as outlined in, but not limited to, the "Best Management Practice Handbook, California Stormwater quality task force, Sacramento, California, 2003", or the latest revised edition, may apply during the construction of this project (Additional measures may be required if deemed appropriate by county inspectors):

- EROSION CONTROL: EC-1 Scheduling, EC-2 Preservation of Existing Vegetation, EC-3 Hydraulic Mulch, EC-4 Hydroseeding, EC-5 Soil Binders, EC-6 Straw Mulch, EC-7 Geotextiles and Mats, EC-8 Wood Mulching, EC-9 Earth Dikes and Drainage Swales, EC-10 Velocity Dissipation Swales, EC-11 Slope Drains, EC-12 Streambank Stabilization, EC-13 Polyacrylamide. WIND EROSION CONTROL: WE-1 Wind Erosion Control. NON-STORM WATER MANAGEMENT: NS-1 Water Conservation Practices, NS-2 Dewatering Operations, NS-3 Paving and Grinding Operations, NS-4 Temporary Stream Crossing, NS-5 Clear Water Diversion, NS-6 Illicit Connection/Discharge, NS-7 Potable Water/Irrigation, NS-8 Vehicle and Equipment Cleaning, NS-9 Vehicle and Equipment Fueling, NS-10 Vehicle and Equipment Maintenance, NS-11 Pile Driving Operations, NS-12 Concrete Curing, NS-13 Concrete Finishing, NS-14 Material Over Water, NS-15 Demolition Adjacent to Water, NS-16 Temporary Batch Plants. EQUIPMENT TRACKING CONTROL: TR-1 Stabilized Construction Entrance/Exit, TR-2 Stabilized Construction Roadway, TR-3 Entrance/Outlet Tire Wash.

PRIVATE CONTRACT SEWER GENERAL NOTES

- The following general notes are to be included on Page 1 of all Private Contract Sewer Plans: 1. A sewer construction permit shall be obtained and a fee paid for construction inspection and record plans to the County of Los Angeles Department of Public Works at the Permit Counter, 800 South Fremont Avenue, 5th Floor, Alhambra, at least 72 hours prior to starting work under this permit. 2. Prior to issuance of any permit, the contractor shall file a permit for excavations and trenches from the State of California Division of Industrial Safety and a Certificate of Worker's Compensation Insurance with the Department of Public Works named as the Certificate Holder. 3. If work is done in a State Highway, a permit must be obtained from the State of California Division of Highways, 120 South Spring Street, Los Angeles, California. 4. When work is within a contract city, the contractor must contact the Director of Public Works of that city, to determine the location to pay the inspection fee. 5. The contractor shall contact the district office listed on the "Application for Construction Permit" to arrange for an acceptable construction start date. 6. Approval of this plan by the County of Los Angeles Department of Public Works, City Engineer does not constitute a representation as to accuracy of the location of or the existence or non-existence of any underground utility pipes or structures within the limits of this project. 7. All work shall be in accordance with the latest approved edition of the "Standard Specifications for Public Works Construction", including supplements (if there is any), the latest Additions and Amendments to the Standard Specifications for Public Works Construction, and the latest "Special Provisions for the Construction of Sanitary Sewer and shall be prosecuted only in the presence of the County of Los Angeles Department of Public Works. 8. The contractor's attention is directed to Section 7-10.4.1 of the "Standard Specifications for Public Works Construction" in regard to safety orders and shall conform to the "Minimum Public Safety Requirements" as shown on Los Angeles Department of Public Works standard plan 8008-1. 9. Elevation are in feet above U.S.C. & G.S. sea level datum of 1988. 10. No revisions shall be made in these plans without the approval of the County of Los Angeles Department of Public Works. 11. No representative of the County of Los Angeles Department of Public Works will survey or lay out any portion of the work. 12. Grades to which this improvement is to be constructed are shown on plans and profiles. Grade points for top of curbs, centerline of streets, or centerline of alleys, are shown by circles on profiles at all points between said designed points. The grade shall be established so as to conform to a straight line drawn between said design points. 13. The private engineer shall furnish the County of Los Angeles Department of Public Works with grade sheets and stationing for all house laterals and 1/2" or 1" branches and shall provide stakes for them at their proper locations with stationing plainly marked. All house laterals shall be constructed in a straight alignment of right angles from the main line sewer except as shown on the plans. House laterals from chimneys shall not have an angle of less than 45 degrees with the M.L. sewer. Any change in alignment shall be requested in writing by the private engineer. 14. The private engineer shall furnish the house lateral depth at the property line below the top of curb elevation for each house lateral on the grade sheet. 15. An approved backwater valve is required when the pod is lower in elevation than the top of the next upstream manhole. 16. Contact Environmental Programs Division for industrial waste discharge permit @ (626) 458-3517

CONSTRUCTION NOTES

- 1. Provide survey stakes on the property line or property lines produced at right angles to the sewer line at the centerline of each manhole. 2. Vitrified clay pipe joints shall be type "D" or "G" per "Standard Specifications for Public Works Construction" Section 208-2. 3. If a powerpole is within three feet of the sewer, the sewer shall be encased per LACDPW standard plan 2023-2, Case II, two feet on each side from the point of interference. 4. All joints between cast iron pipes and vitrified clay shall be made with a rubber sleeve joint, type "D" (with bushing if necessary) per "Standard Specifications for Public Works Construction" Section 208-2. 5. House laterals to be constructed with inverts at the property line 6 feet below curb grade except as noted. 6. Wye or tee branches may be used for connections to the mainline sewers except as noted. 7. If during the course of construction, it is determined that there is less than four feet of cover over the top of a mainline or house lateral V.C.P. sewer which is not indicated on the plans, the pipes shall be encased per LACDPW standard plan 2023-2, Case II, unless otherwise approved by the County of Los Angeles Department of Public Works. 8. All structures shall be either brick sewer manholes per LACDPW standard plan S-3 (SPPWC 203-2), or precast concrete sewer manholes per LACDPW standard plan S-36 (SPPWC 203-2) or reinforced precast concrete manhole per LACDPW standard plan 2003-2, except as noted. 9. Resurface lots with paved areas to meet the Department of Public Works or California State Highway requirements in accordance with the permits. 10. Full compliance with Section 306-1.3 of the "Standard Specifications for Public Works Construction" will be required for backfill in street, Certification of backfill, compaction, and sand equivalents by a qualified civil engineer shall be provided by the contractor prior to the issuance of a certificate of partial acceptance. 11. All backfill and fill outside of the street right of way shall be compacted to 90% of the maximum density as determined by ASTM soil compaction test D 1557-78 method "D" unless otherwise specified. This shall be certified by a qualified civil engineer. This certification shall be submitted to the Construction Division of the Department of Public Works prior to the acceptance of the work by the county. 12. Manhole tops in unimproved rights of way to be six inches above finished grade. 13. Sewers to be tested for leakage per section 306-1.4 of the "Standard Specifications for Public Works Construction" and "Special Provisions for the Construction of Sanitary Sewer" if applicable. 14. Manhole tops in improved rights of way to be level with finished grade. 15. All wyes and/or house laterals are to be located at least 5' apart and when possible not closer than 5' to any manhole. 16. All pipe materials shall be vitrified clay pipe or ductile iron pipe or other approved materials by the County of Los Angeles Department of Public Works.

NOTICE TO CONTRACTOR:

MAINTAIN SEWER FLOW AT ALL TIMES DURING CONSTRUCTION. SEWER LATERALS SHOWN ON PLANS ARE FOR REFERENCE ONLY. THE DEVELOPER SHALL BE RESPONSIBLE FOR THE CONTINUED MAINTENANCE OF PC 12148 SANITARY SEWER UNTIL THE COUNTY FORMALLY ACCEPTS IT FOR MAINTENANCE. ALL MAINLINE, MANHOLES AND LATERALS SHALL BE PROTECTED FROM DAMAGE AND INTERFERENCE. ISSUE NO HOUSE LATERAL CONNECTION PERMITS UNTIL OUTLET SEWER PC 12148 IS/ARE ACCEPTED FOR PUBLIC USE BY THE COUNTY OF LOS ANGELES.

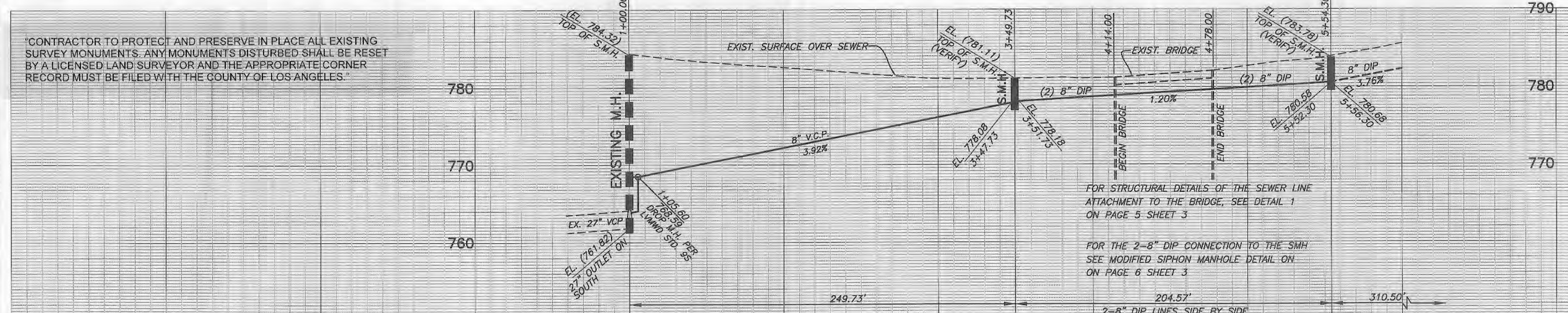
B. STANDARD PLANS:

- The following latest revised standard plans on file in the office of the following department shall apply in the construction of this project. LOS ANGELES COUNTY DEPARTMENT OF PUBLIC WORKS: 2000-0 Legend for sanitary sewer plans and profiles and district maps, 2002-1 Precast concrete shallow manhole, 2003-2 Reinforced precast concrete manhole, 2004-1 Rectangular shallow manhole, 2014-1 Rectangular manhole frame and cover, 2015-1 Standard manhole step. STANDARD PLANS FOR PUBLIC WORKS CONSTRUCTION (SPPWC): 207-1 Precast reinforced concrete manhole base, 208-1 Breaking into existing manholes, 210-2 Manhole frame and cover locking type, 220-2 Chimney. LOS ANGELES COUNTY DEPARTMENT OF PUBLIC WORKS: 2021-1 Bedding for sewer pipe, 2023-2 Cradling and encasement, 2024-1 WYE or TEE support, 2026-1 Erosion protection in steep slopes, 2027-1 Allowable trench widths, 6006-1 Minimum public safety requirements, 2100-1 Requirements for sanitary sewers near water mains. STANDARD PLANS FOR PUBLIC WORKS CONSTRUCTION (SPPWC): 221-1 Pipe anchors and backfill stabilizers, 222-1 House connection sewer, 223-1 House connection remodeling, 225-1 Blanket protection for pipes.

NOTES: No connection for the disposal of industrial wastes shall be made to sewers shown on these drawings until a permit for industrial waste-water discharge has been issued by the Sanitation Districts for solid connections. Before breaking into or constructing a Sanitation District's sewer and prior to final acceptance of the project, a Sanitation District's inspector shall be notified by telephone at (310) 638-1161 (South County/LA Basin) or (661) 266-4683 (North County) or (626)862-8605 (San Gabriel Valley) so that required inspection can be made. Any damage to the sewer line shall be the responsibility of the contractor/owner. All grading and construction occurring over and the vicinity of the existing sewer shall be performed in the presence of a County inspector. Where applicable, the sewers shall be protected per Std. Plan 2023-2 at all significant crossings.

BUILDING AND SAFETY DISTRICT OFFICE: 9.10 CALABASAS SCALE: 1" = 600' CSMD INDEX N-1067 NOTES: NUMBER IN CIRCLE INDICATES PAGE NUMBER. ALL MAINLINE SANITARY SEWERS ARE WITHIN THE SANITARY SEWER EASEMENT. P.C. 12148 PM 71223 THOMAS GUIDE PAGE: 587 (H-2)

Table with columns: NO., REVISION, REVISED BY, APPROVED BY, DATE



SEWER CL CURVE DATA table with columns: O, A, R, L, T. Row 1: A, 27°03'22", 120.00', 56.67', 28.87'

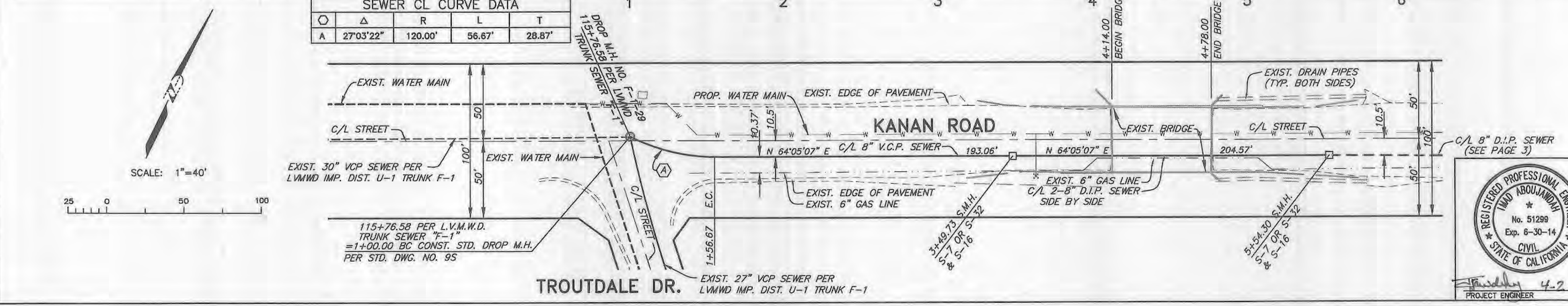
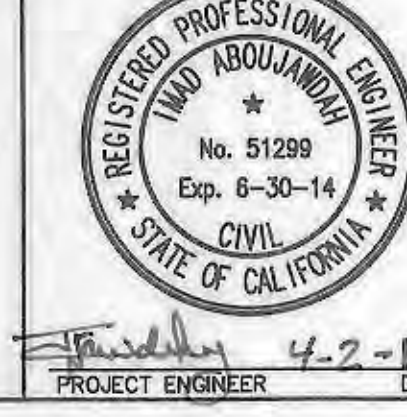
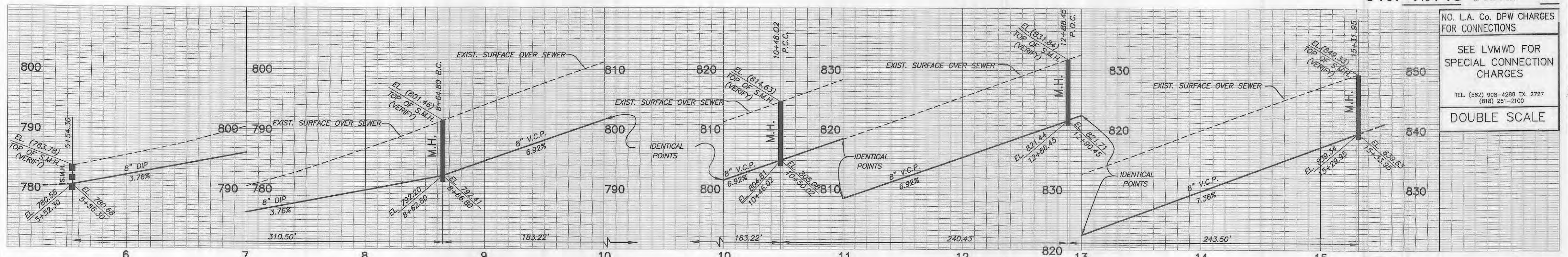


Table with columns: NO., REVISION, REVISED BY, APPROVED BY, DATE

SANITARY SEWER PLANS IN PM 71223 PC NO. 12148 REVIEWED BY LAND DEVELOPMENT DIVISION BY: [Signature] DATE: 6/2/13 SEWER AND WATER / LANDSCAPING SUBDIVISION PLAN CHECKING SECTION COUNTY OF LOS ANGELES DEPARTMENT OF PUBLIC WORKS

Design Drafting Inc. 3791 Prairie Ridge Ct, Simi Valley, CA 93063. Phone: 805.522.2622. Fax: 805.426.8016. Project No. [Blank]

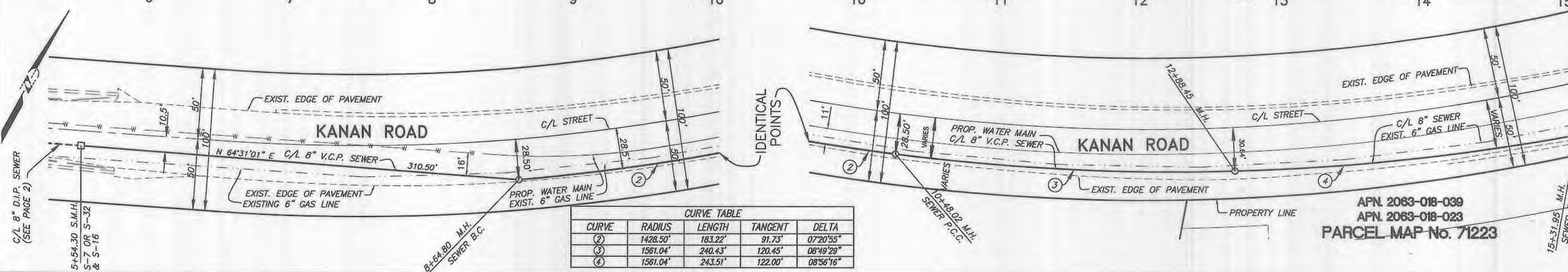




NO. L.A. Co. DPW CHARGES FOR CONNECTIONS  
 SEE LVMWD FOR SPECIAL CONNECTION CHARGES  
 TEL (562) 908-4288 EX. 2727 (618) 251-2100  
 DOUBLE SCALE



SCALE: 1"=40'

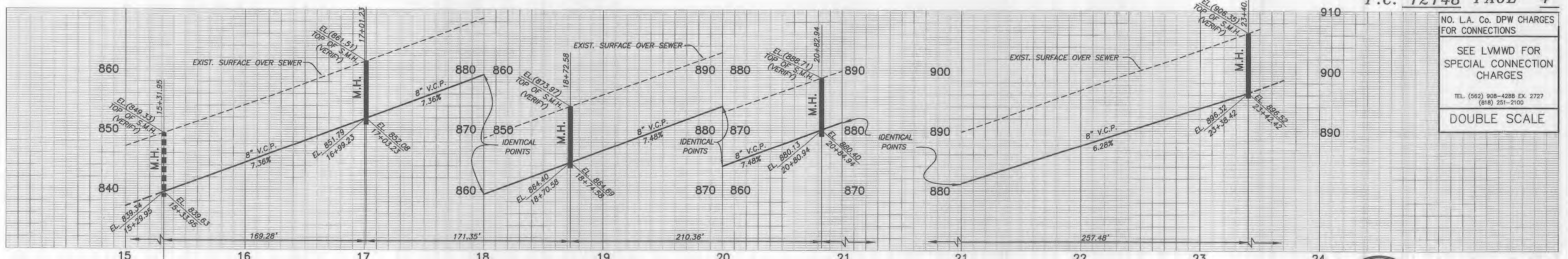


CURVE	RADIUS	LENGTH	TANGENT	DELTA
②	1428.50'	183.22'	91.73'	07°20'55"
③	1561.04'	240.43'	120.45'	08°49'29"
④	1561.04'	243.51'	122.00'	08°56'16"

APN. 2063-018-039  
 APN. 2063-018-023  
 PARCEL MAP No. 71223

NO.	REVISION	REVISED BY	APPROVED BY	DATE

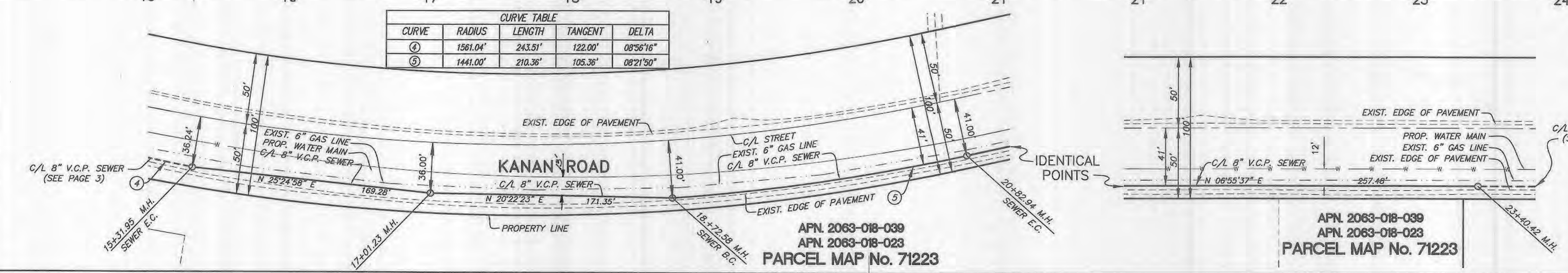
REVIEWED BY LAND DEVELOPMENT DIVISION  
 BY *T. Khalil* 5/22/13  
 SEWER AND WATER / LANDSCAPING SUBDIVISION PLAN CHECKING SECTION DATE



NO. L.A. Co. DPW CHARGES FOR CONNECTIONS  
 SEE LVMWD FOR SPECIAL CONNECTION CHARGES  
 TEL (562) 908-4288 EX. 2727 (618) 251-2100  
 DOUBLE SCALE



SCALE: 1"=40'



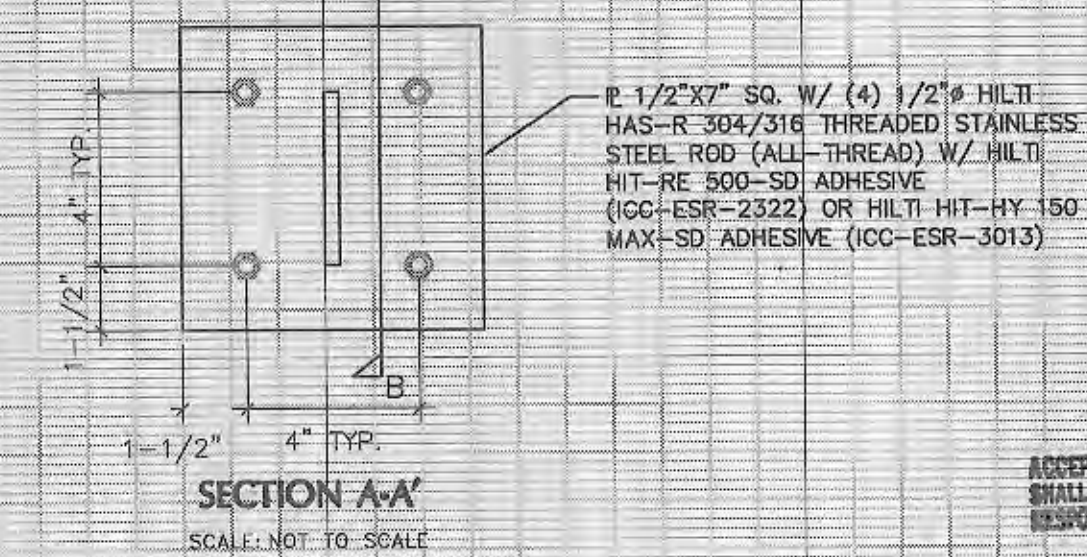
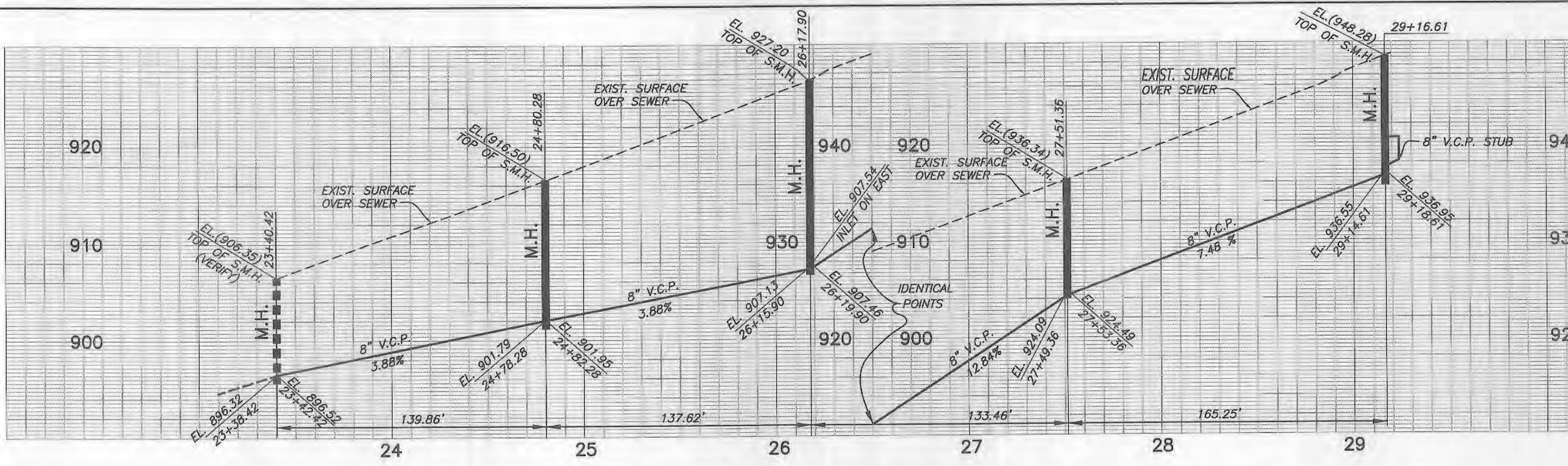
CURVE	RADIUS	LENGTH	TANGENT	DELTA
④	1561.04'	243.51'	122.00'	08°56'16"
⑤	1441.00'	210.36'	105.36'	08°21'50"

APN. 2063-018-039  
 APN. 2063-018-023  
 PARCEL MAP No. 71223

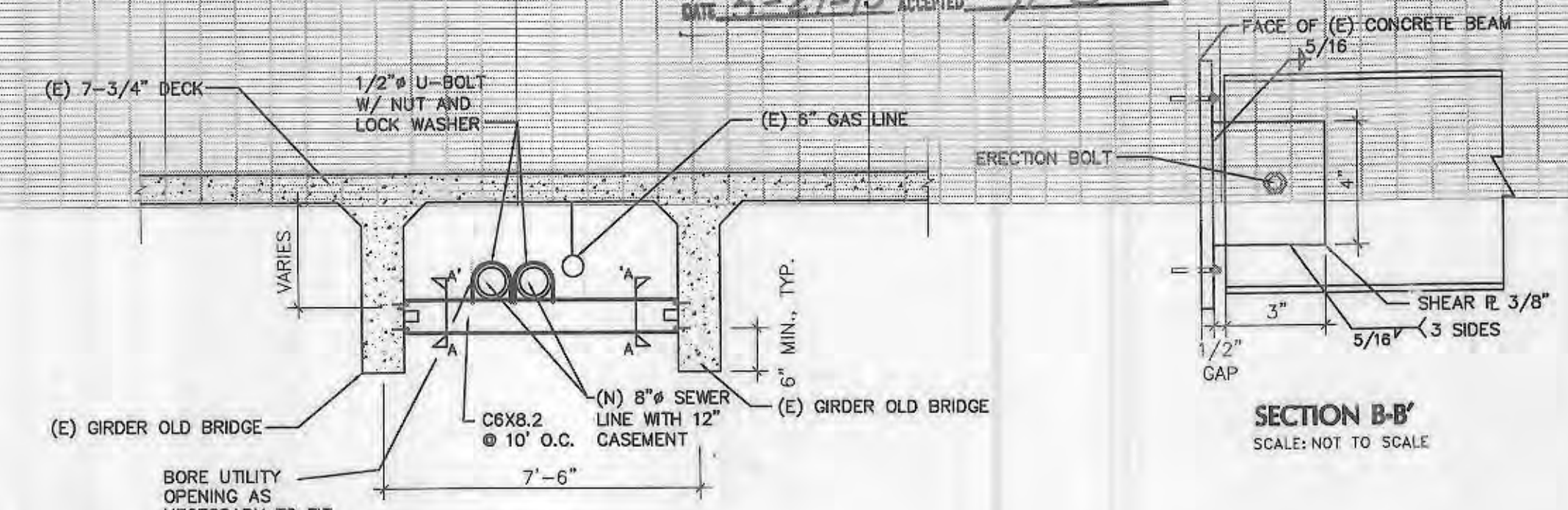
NO.	REVISION	REVISED BY	APPROVED BY	DATE

REVIEWED BY LAND DEVELOPMENT DIVISION  
 BY *T. Khalil* 5/22/13  
 SEWER AND WATER / LANDSCAPING SUBDIVISION PLAN CHECKING SECTION DATE

NO. L.A. Co. DPW CHARGES FOR CONNECTIONS  
 SEE LMVMD FOR SPECIAL CONNECTION CHARGES  
 TEL (562) 908-4288 EX. 2727 (818) 251-2100  
 DOUBLE SCALE



DESIGN DIVISION  
 STRUCTURAL ANALYSIS SECTION  
 STRUCTURAL REVIEW  
 ACCEPTANCE IS AN ADDITIONAL PRECAUTION TO CHECK ERRORS AND SHALL NOT BE CONSTRUED AS RELIEVING THE CONTRACTOR OF FULL RESPONSIBILITY FOR THE ACCURACY OF THIS PLAN.  
 DATE 5-21-13 ACCEPTED H.E.



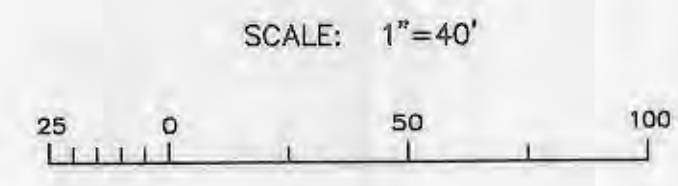
PROPOSED SEWER LINE DETAIL FOR BRIDGE NO. 1345  
 KANAN ROAD OVER TRIUNFO CREEK  
 SCALE: NOT TO SCALE

NO.	REVISION	REVISED BY	APPROVED BY	DATE

REVIEWED BY LAND DEVELOPMENT DIVISION  
 BY T. K. ... DATE 5/22/13  
 SEWER AND WATER / LANDSCAPING SUBDIVISION PLAN CHECKING SECTION



APN. 2063-018-039  
 APN. 2063-018-023  
 PARCEL MAP No. 71223  
 VAR. WIDTH ESMT TO LA CO. FOR SANITARY SEWER PURPOSES PER PM NO. 71223



DEPARTMENT OF PUBLIC WORKS, DESIGN DIVISION  
 BY HAMD EMAM RCE NO. C 034955 DATE

NO. L.A. Co. DPW CHARGES FOR CONNECTIONS  
 SEE LMVMD FOR SPECIAL CONNECTION CHARGES  
 TEL (562) 908-4288 EX. 2727 (818) 251-2100  
 DOUBLE SCALE

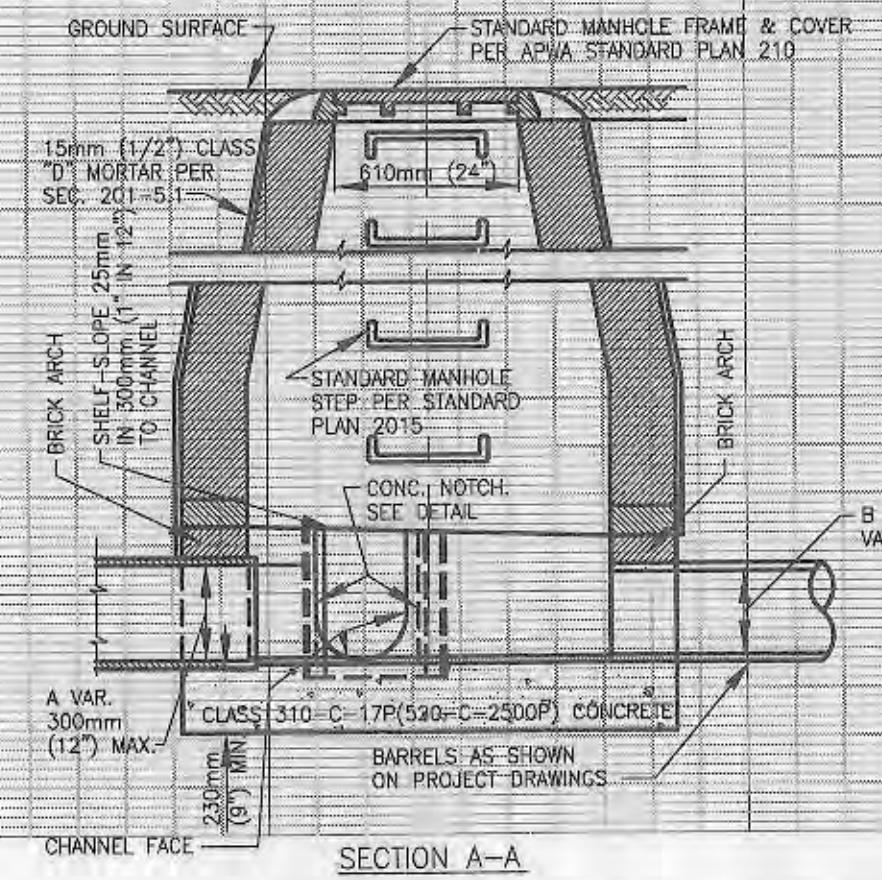
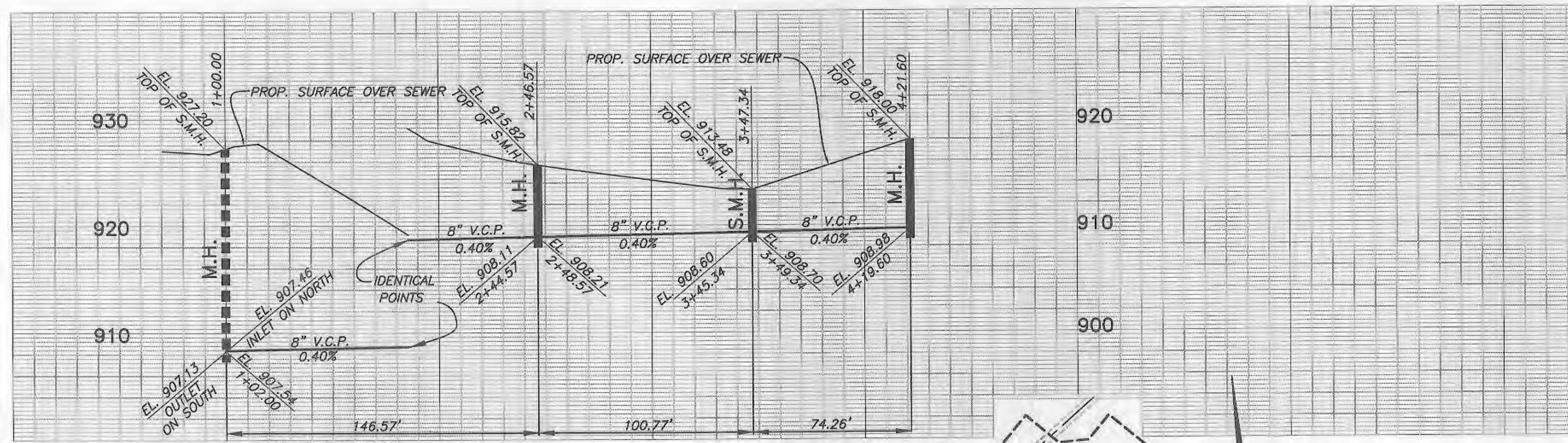
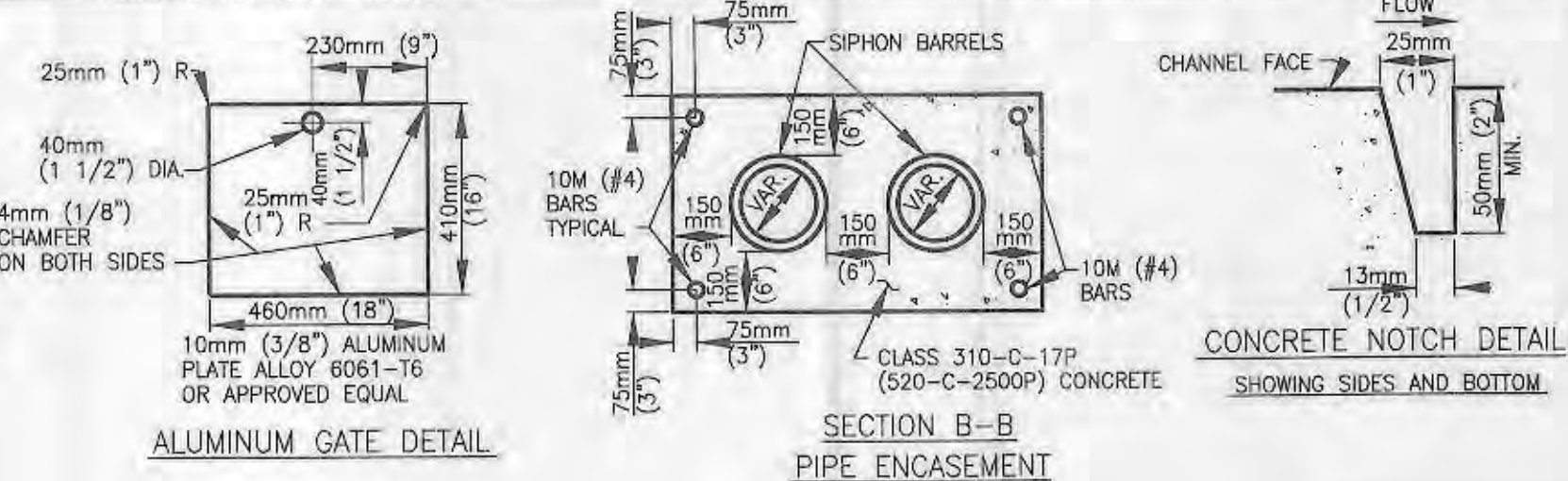
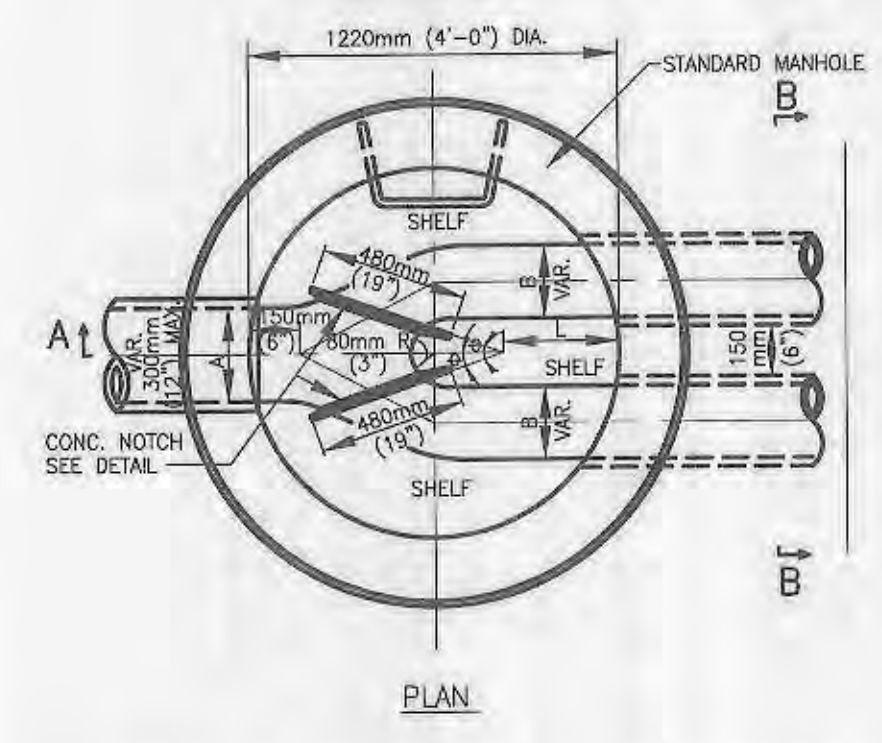


TABLE OF DIMENSIONS

A	B	L	9
200mm (8")	150mm (6")	318mm (12 1/2")	13"
200mm (8")	200mm (8")	318mm (12 1/2")	13"
250mm (10")	200mm (8")	318mm (12 1/2")	13"
250mm (10")	250mm (10")	388mm (15 1/4")	20"
300mm (12")	250mm (10")	388mm (15 1/4")	20"
300mm (12")	300mm (12")	466mm (18 3/8")	30"

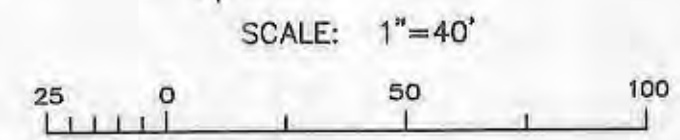
- NOTES:
- FOR OTHER MANHOLE DETAILS SEE APWA STANDARD PLANS 200 AND 203 OR STANDARD PLAN 2008.
  - USE FOR ANY COMBINATION OF SIZES TO A MAXIMUM OF TWO 300mm (12") PIPES.
  - FOR PIPE DIAMETERS GREATER THAN 300mm (12"), PRIOR APPROVAL FROM THE DEPARTMENT IS REQUIRED.
  - ENCASE SIPHON ONLY AT THE EXTENT SHOWN ON PROJECT DRAWINGS.
  - PROVIDE ONE ALUMINUM GATE WITH EACH SIPHON MANHOLE.
  - THE DOWNSTREAM LEGS OF SIPHON BARRELS SHALL NOT EXCEED A GRADE OF +30.00%.
  - DIMENSIONS SHOWN ON THE PLAN FOR METRIC AND ENGLISH UNITS ARE NOT EXACTLY EQUAL VALUES. IF METRIC UNITS ARE USED, ALL VALUES USED FOR CONSTRUCTION SHALL BE METRIC VALUES. IF ENGLISH UNITS ARE USED, ALL VALUES USED FOR CONSTRUCTION SHALL BE ENGLISH VALUES.



ALUMINUM GATE DETAIL

SECTION B-B  
 PIPE ENCASEMENT  
 CONCRETE NOTCH DETAIL  
 SHOWING SIDES AND BOTTOM

KANAN ROAD



CURVE TABLE

CURVE	RADIUS	LENGTH	TANGENT	DELTA
⑥	129.00'	36.58'	18.41'	161°50'
⑦	178.00'	100.77'	51.77'	32°26'07"
⑧	127.00'	74.28'	38.22'	33°30'00"

MODIFIED SIPHON MANHOLE 2005  
 NOT TO SCALE



NO.	REVISION	REVISED BY	APPROVED BY	DATE

REVIEWED BY LAND DEVELOPMENT DIVISION  
 BY T. K. ... DATE 5/22/13  
 SEWER AND WATER / LANDSCAPING SUBDIVISION PLAN CHECKING SECTION

PARCEL MAP No. 71223  
 VARIABLE WIDTH EASEMENT TO THE LOS ANGELES COUNTY FOR SANITARY SEWER PURPOSES PER PM NO. 71223