

TRACT NO. 71925 PC 12169
2 SHEETS OF 3 PAGES
COUNTY OF LOS ANGELES CALIFORNIA
CSMD INDEX S-1654

MARK PESTRELLA
COUNTY DIRECTOR OF PUBLIC WORKS
APPROVED BY LAND DEVELOPMENT DIVISION
DATE 6/12/18
BY ASSISTANT DIVISION ENGINEER
SUBMITTED BY Valerio Padua DATE 6/12/18
SEWER AND LANDSCAPING SUBDIVISION PLAN CHECKING SECTION

COUNTY SANITATION DISTRICTS NO. 9
OF LOS ANGELES COUNTY, CALIFORNIA
GRACE ROBINSON HYDE-CHIEF ENGINEER AND GENERAL MANAGER
APPROVED BY DATE 6/27/18
OFFICE ENGINEERING COUNCIL

CITY OF LOS ANGELES APPROVAL
TRACT/PARCEL/ADDRESS TR 71925 PC NO 12169
CITY OF LOS ANGELES DISCHARGE OUTLET APPROVED
WE APPROVE THIS SEWER AREA STUDY/PLAN AND CONCUR WITH THE FOLLOWING FINDINGS WITHIN THE CITY WITH MITIGATION
APPROVED BY DATE 6/25/18
CITY ENGINEER RCE

ENGINEER/SURVEYOR'S STATEMENT REGARDING THE PRESENCE OF MONUMENTS WITHIN PROJECT LIMITS
I HEREBY ATTEST THAT I HAVE LOCATED AND REFERENCED ON THESE PLANS THE MONUMENTS EXISTING PRIOR TO CONSTRUCTION TO ENSURE PERPETUATION OF THEIR LOCATION IN ACCORDANCE WITH SECTION 9174 OF THE BUSINESS AND PROFESSIONS CODE. I FURTHER MORE ATTEST THAT I HAVE PERFORMED A RECORD SEARCH AND FIELD INSPECTION TO IDENTIFY EXISTING MONUMENTS. I SHALL SET SUFFICIENT CONTROLLING WITNESS AND PERMANENT MONUMENTS AND SHALL FILE THE REQUISITE CORNER RECORD OR RECORD OF SURVEY OF THE REFERENCES WITH THE COUNTY SURVEYOR.
APPROVED BY DATE 09/14/17
REGISTERED PROFESSIONAL ENGINEER No. 30826 STATE OF CALIFORNIA CIVIL

PRIVATE ENGINEERS NOTICE TO CONTRACTORS:
THE EXISTENCE AND LOCATION OF ANY UNDERGROUND UTILITY PIPES OR STRUCTURES SHOWN ON THESE PLANS IS REQUIRED BY A SEARCH OF AVAILABLE RECORDS TO THE BEST OF OUR KNOWLEDGE. THERE ARE NO EXISTING UTILITIES EXCEPT AS SHOWN ON THIS MAP. THE CONTRACTOR IS REQUIRED TO TAKE PRECAUTIONARY MEASURES TO PROTECT THE UTILITY LINES SHOWN AND ANY OTHER LINES NOT OF RECORD OR NOT SHOWN ON THIS DRAWING. PRIOR TO EXCAVATION THE CONTRACTOR SHALL CALL TOLL FREE 1-800-422-4133 TO VERIFY THE UNDERGROUND LOCATION OF GAS AND TELEPHONE LINES. THE CONTRACTOR SHALL ALSO CALL RAY CUMMINGS OF GENERAL TELEPHONE COMPANY AT 1-855-948-4871 SO THAT THEY CAN MARK THE LOCATION OF UNDERGROUND TELEPHONE LINES.
MARK RICHARDS 55146 07/05/17
PROJECT ENGINEER RCE NO DATE

PS007709

COLLECT CHARGERS AS INDICATED
SEE COUNTY SANITATION DISTRICTS FOR SPECIAL CONNECTION CHARGES
TEL: (562) 906-4288 EX. 2727
DOUBLE VERTICAL SCALE
SCALE: VERT. 1" = 8'
HORIZ. 1" = 40'

BENCH MARKS
Y 11274 DPW BM TAG IN E. CB
300 MM S/O BCR @ SE COR. 9TH ST. & WESTERN AVE
PALOS VERDES QUAD ELEVATION 423.290 2005 ADJ

Per Title 24.140 of LA County Code, obstructing access to sewer facilities is prohibited. No object difficult to remove shall be located over the sewer easement(s) to interfere with ready access to sewer facilities.

- A. NOTES:**
- Every effort should be made to eliminate the discharge of non-stormwater from the project site at all times.
 - Eroded sediments and other pollutants must be retained on-site and may not be transported from the site via sheet flow, swales, area drains, natural drainage courses or wind.
 - Stockpiles of earth and other construction related materials must be protected from being transported from the site by the forces of wind or water.
 - Fuels, oils, solvents, and other toxic materials must be stored in accordance with their listing and are not to contaminate the soil and surface waters. All approved storage containers are to be protected from the weather. Spills must be cleaned up immediately and disposed of in a proper manner. Spills may not be washed into the drainage system.
 - Excess or waste concrete may not be washed into the public way or any other drainage system. Provisions shall be made to retain concrete wastes on-site until they can be disposed of as solid waste.
 - Trash and construction related solid wastes must be deposited into a covered receptacle to prevent contamination of rainwater and dispersal by wind.
 - Sediments and other materials may not be tracked from the site by vehicle traffic. The construction entrance roadways must be stabilized so as to inhibit sediments from being deposited into the public way. Accidental deposits must be swept up immediately and may not be washed down by rain or other means.
 - Any spots with disturbed soils or denuded of vegetation must be stabilized so as to inhibit erosion by wind and water.
 - The following BMPs as outlined in, but not limited to, the latest edition of the California BMP Handbook (Construction or California Stormwater Quality Handbooks (Construction Site BMP Manual), may apply during the construction of this project (additional measures may be required if deemed appropriate by the Project Engineer or the Building Official).

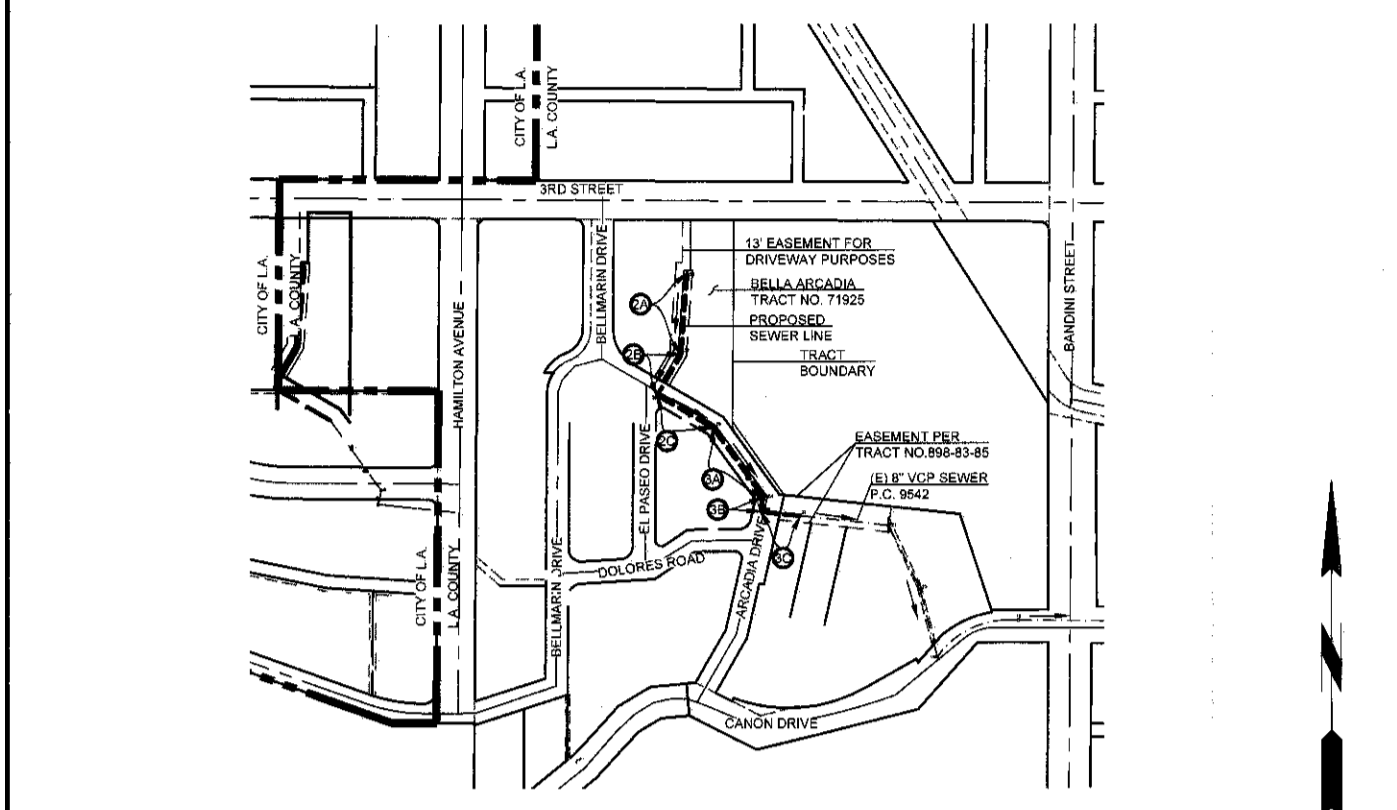
- EROSION CONTROL**
- E01 SCHEDULING
 - E02 PRESERVATION OF EXISTING VEGETATION
 - E03 HYDRAULIC MULCH
 - E04 HYDROSEEDING
 - E05 SOD BANKERS
 - E06 STRAW MULCH
 - E07 GEOTEXTILES & MATS
 - E08 WOOD MULCHING
 - E09 EARTH DICES AND DRAINAGE SWALES
 - E10 VELOCITY DISPERSION DEVICES
 - E11 SLOPE DRAINS
 - E12 STREAMBANK STABILIZATION
 - E13 RESERVED
 - E14 COMPOST BLANKETS
 - E15 SOIL PREPARATION/ENHANCING
 - E16 NONVEGETATED STABILIZATION
- NON-STORM WATER MANAGEMENT**
- N01 WATER CONSERVATION PRACTICES
 - N02 DETERIATING OPERATIONS
 - N03 PAVING AND GRINDING OPERATIONS
 - N04 TEMPORARY STREAM CROSSING
 - N05 CLEAN WATER DIVERSION
 - N06 LIQUID CONNECTION/DISCHARGE
 - N07 POTABLE WATER IRRIGATION
 - N08 VEHICLE AND EQUIPMENT CLEANING
 - N09 VEHICLE AND EQUIPMENT FUELING
 - N10 VEHICLE AND EQUIPMENT MAINTENANCE
 - N11 FLE DRIVING OPERATIONS
 - N12 CONCRETE CURING
 - N13 CONCRETE FINISHING
 - N14 MATERIAL AND EQUIPMENT USE
 - N15 DEMOLITION ADJACENT TO WATER
 - N16 TEMPORARY BATCH PLANTS

- WASTE MANAGEMENT AND MATERIALS POLLUTION CONTROL**
- WM1 MATERIAL DELIVERY AND STORAGE
 - WM2 MATERIAL USE
 - WM3 STOCKPILE MANAGEMENT
 - WM4 SPILL PREVENTION AND CONTROL
 - WM5 SOLID WASTE MANAGEMENT
 - WM6 HAZARDOUS WASTE MANAGEMENT
 - WM7 CONTAMINATION/SOIL MANAGEMENT
 - WM8 CONCRETE WASTE MANAGEMENT
 - WM9 SANITARY/SEPTIC WASTE MANAGEMENT
 - WM10 LIQUID WASTE MANAGEMENT
- TEMPORARY SEDIMENT CONTROL**
- SES1 SILT FENCE
 - SES2 SEDIMENT BASIN
 - SES3 SEDIMENT TRAP
 - SES4 CHECK DAM
 - SES5 FIBER ROLLS
 - SES6 GRAVEL BAG BERM
 - SES7 STREET SWEEPING AND VACUUMING
 - SES8 SANDBAG BARRIER
 - SES9 STRAW BALE BARRIER
 - SES10 STORM DRAIN INLET PROTECTION
 - SES11 ACTIVE TREATMENT SYSTEMS
 - SES12 TEMPORARY SILT DIKE
 - SES13 COMPOST SOCKS & BERMS
 - SES14 BIOFILTER BAGS

- B. STANDARD PLANS:**
- The following latest revised standard plans on file in the office of the following department shall apply in the construction of this project.
- LOS ANGELES COUNTY DEPARTMENT OF PUBLIC WORKS
- | | | | |
|--------|------------------------------------------------------------------|--------|----------------------------------------------------|
| 2009-0 | Legend for sanitary sewer plans and profiles and districts maps. | 2021-1 | Bedding for sewer pipe. |
| 2002-1 | Precast concrete shallow manhole. | 2023-2 | Cradling and encasement. |
| 2003-2 | Reinforced precast concrete manhole. | 2024-1 | WYE or TEE support. |
| 2004-1 | Rectangular shallow manhole. | 2025-1 | Erosion protection in steep slopes. |
| 2014-1 | Rectangular manhole frame and cover. | 2027-1 | Allowable trench widths. |
| 2015-1 | Standard manhole slope. | 8009-1 | Minimum public safety requirements. |
| | | 2100-1 | Requirements for sanitary sewers near water mains. |
- STANDARD PLANS FOR PUBLIC WORKS CONSTRUCTION (SPPWC)**
- | | | | |
|-------|------------------------------------------|-------|----------------------------------------|
| 200-3 | Precast concrete sewer manhole | 220-3 | Chimneys |
| 204-2 | Terminal cleanout manhole | 221-2 | Pipe anchors a-u) backfill stabilizers |
| 207-2 | Precast reinforced concrete manhole base | 225-2 | House connection sewer |
| 208-2 | Breaking into existing manholes | 223-2 | House connection remodeling |
| 210-3 | Manhole frame and cover locking type | 226-2 | Blanket protection for pipes |

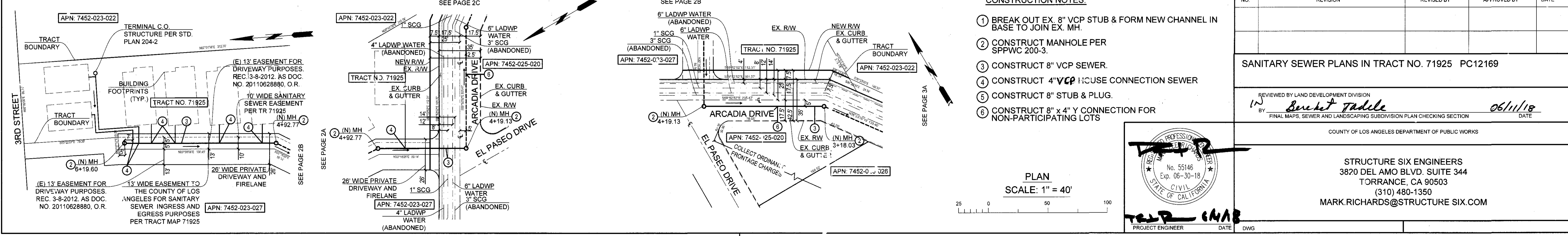
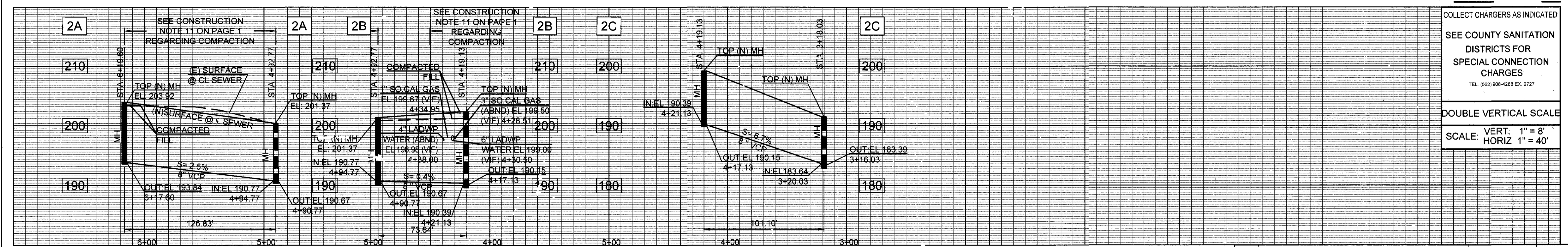
- COUNTY SANITATION DISTRICTS (CSD) NOTES:**
- No connection for the disposal of industrial wastes shall be made to sewers shown on these plans until a permit for industrial wastewater discharge has been issued by CSD for said connections.
 - Prior to final acceptance of the project, notify the CSD Superintendent of Maintenance at (310) 638-1161 to report completion of this local sewer that indirectly discharges into the CSD sewer system.

NOTES:
Any damage to the sewer line shall be the responsibility of the contractor/owner. All grading and construction occurring over and the vicinity of the existing sewer shall be performed in the presence of a County inspector. Where applicable, the sewers shall be protected per Std. Plan 2023-2 at all significant crossings.



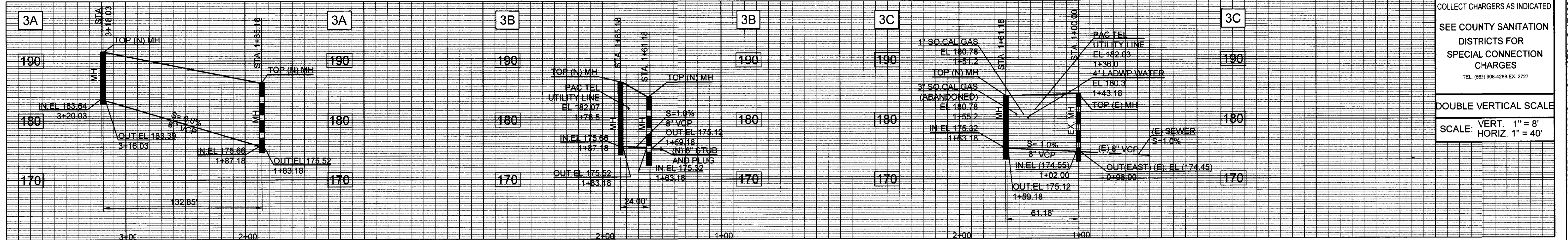
INDEX MAP
BUILDING AND SAFETY DISTRICT OFFICE: LOMITA SCALE: 1" = 300' CSMD INDEX S-1654
NOTES: 1. ALL MAINLINE SANITARY SEWERS ARE WITHIN THE SANITARY SEWER EASEMENT. P.C. 12169 TR. NO. 71925
2. NUMBER IN CIRCLE INDICATES PAGE NUMBER. THOMAS GUIDE PAGE: 824A5

NO.	REVISION	REVISED BY	APPROVED BY	DATE

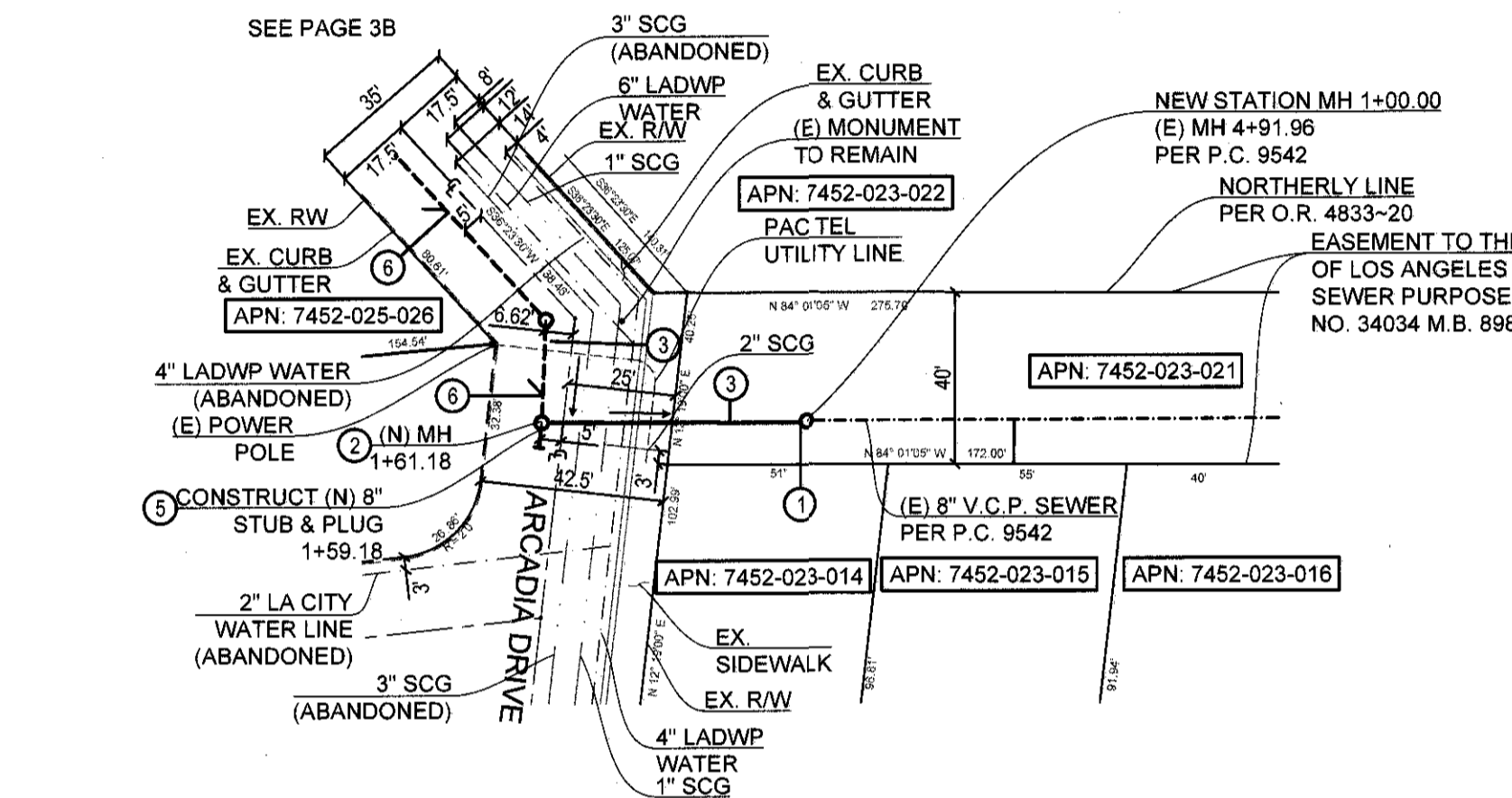
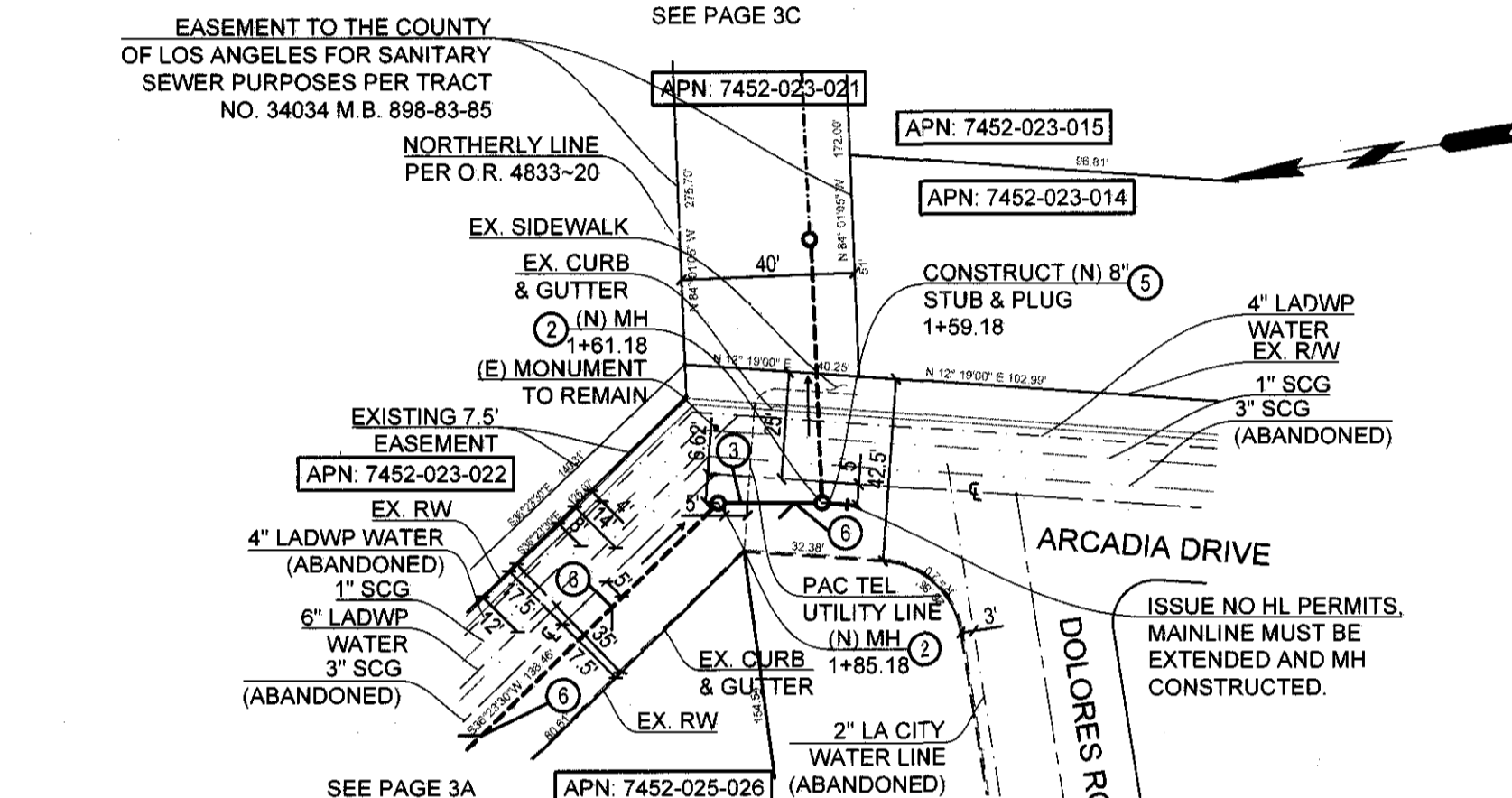
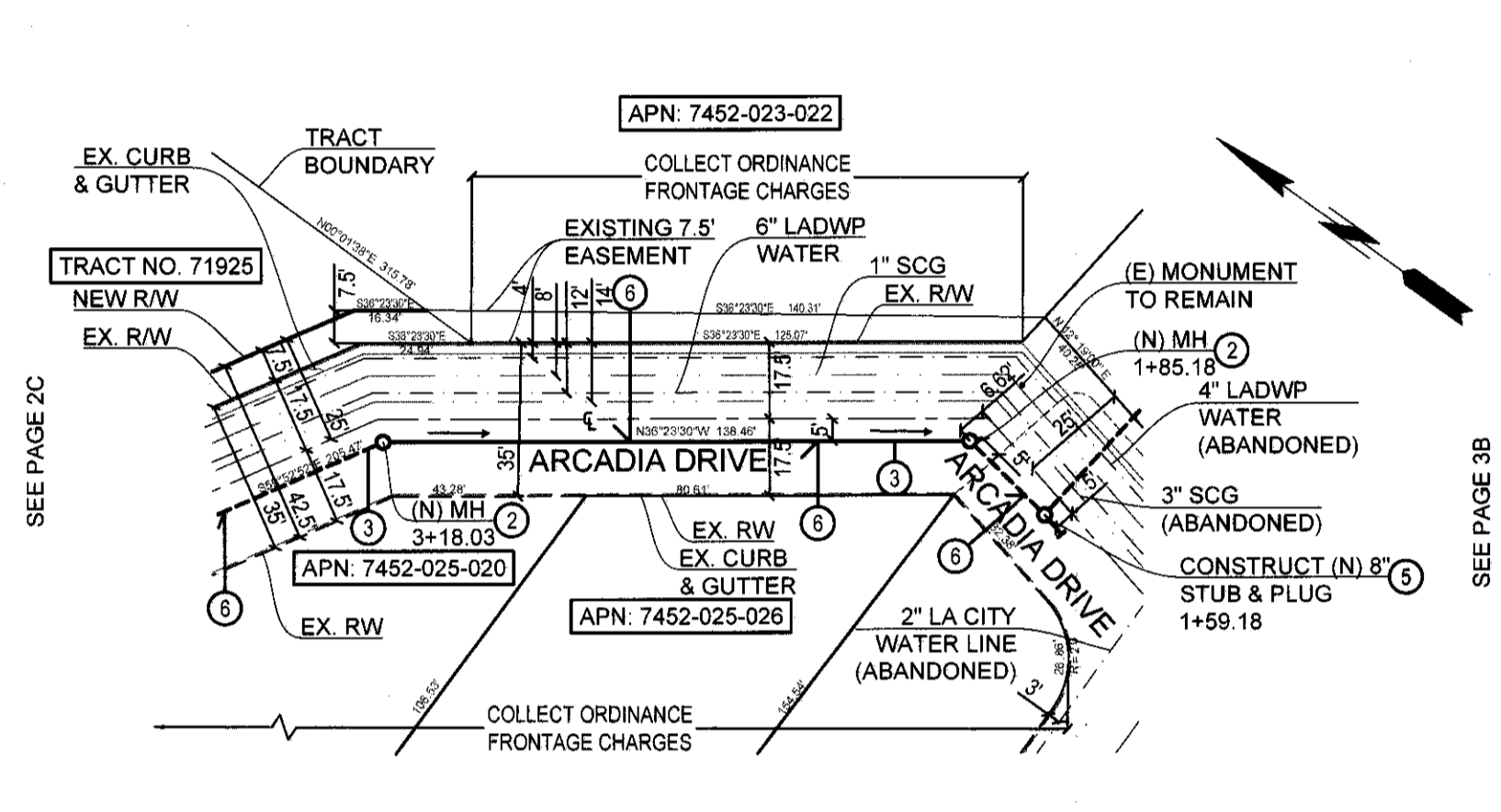


PLAN
SCALE: 1" = 40'
25 0 50 100
PROJECT ENGINEER DATE DWG

STRUCTURE SIX ENGINEERS
3820 DEL AMO BLVD. SUITE 344
TORRANCE, CA 90503
(310) 480-1350
MARK.RICHARDS@STRUCTURE SIX.COM



COLLECT CHARGERS AS INDICATED
 SEE COUNTY SANITATION DISTRICTS FOR SPECIAL CONNECTION CHARGES
 TEL. (962) 909-4288 EX. 2727
 DOUBLE VERTICAL SCALE
 SCALE: VERT. 1" = 8'
 HORIZ. 1" = 40'



- CONSTRUCTION NOTES:**
- ① BREAK OUT EX. 8" VCP STUB & FORM NEW CHANNEL IN BASE TO JOIN EX. MH.
 - ② CONSTRUCT MANHOLE PER SPPWC 200-3.
 - ③ CONSTRUCT 8" VCP SEWER.
 - ④ CONSTRUCT 4" VCP HOUSE CONNECTION SEWER.
 - ⑤ CONSTRUCT 8" STUB & PLUG.
 - ⑥ CONSTRUCT 8" x 4" Y CONNECTION FOR NON-PARTICIPATING LOTS.

NO.	REVISION	REVISED BY	APPROVED BY	DATE

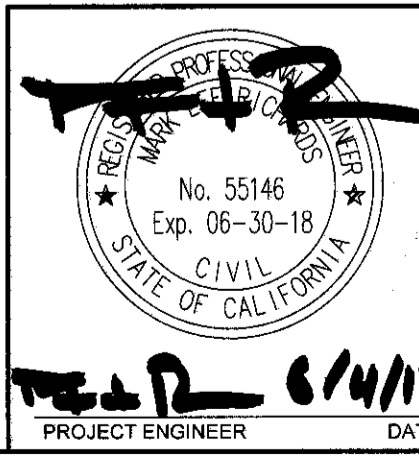
SANITARY SEWER PLANS IN TRACT NO. 71925 PC12169

REVIEWED BY LAND DEVELOPMENT DIVISION
 BY *Berndt Tabela* DATE *06/11/18*
 FINAL MAPS, SEWER AND LANDSCAPING SUBDIVISION PLAN CHECKING SECTION

COUNTY OF LOS ANGELES DEPARTMENT OF PUBLIC WORKS

STRUCTURE SIX ENGINEERS
 3820 DEL AMO BLVD. SUITE 344
 TORRANCE, CA 90503
 (310) 480-1350
 MARK.RICHARDS@STRUCTURE SIX.COM

PS007709



PLAN
 SCALE: 1" = 40'

