

STORMWATER POLLUTION PLAN NOTES

1. Every effort should be made to eliminate the discharge of non-stormwater from the project site at all times.
2. Erosion control and other pollutants must be retained on-site and may not be transported from the site via sheet flow, rills, or any other means of erosion.
3. Discharges of earth and other construction related materials must be protected from being transported from the site by the forces of wind or water.
4. Stormwater runoff shall be captured in accordance with best management practices and shall be directed to a stormwater management facility.
5. Stormwater runoff shall be captured in accordance with best management practices and shall be directed to a stormwater management facility.
6. Stormwater runoff shall be captured in accordance with best management practices and shall be directed to a stormwater management facility.
7. Stormwater runoff shall be captured in accordance with best management practices and shall be directed to a stormwater management facility.

PRIVATE CONTRACT SEWER GENERAL NOTES

1. A sewer connection permit shall be obtained from the County of Los Angeles Department of Public Works, 200 South Fremont Avenue, 3rd Floor, Anaheim, CA 92805, at least 72 hours prior to construction work under this permit.
2. When work is within a utility easement, a sewer connection permit shall be obtained and a fee paid for construction inspection and record plans to the City of Los Angeles.
3. Prior to issuance of any permit, the contractor shall file a copy of the proposed sewer connection plan with the County of Los Angeles Department of Public Works, 200 South Fremont Avenue, 3rd Floor, Anaheim, CA 92805, for review and approval.
4. If work is done in a utility easement, a permit shall be obtained from the State of California Division of Highways, 120 South Spring Street, Los Angeles, California.
5. The contractor shall conduct the work in accordance with the "Application for Construction Permit" as a condition of any sewer connection permit.

NOTICE TO CONTRACTOR

- The developer shall be responsible for the construction of the sewer line and the connection to the County of Los Angeles Department of Public Works main sewer line.
- The contractor shall be responsible for the construction of the sewer line and the connection to the County of Los Angeles Department of Public Works main sewer line.
- The contractor shall be responsible for the construction of the sewer line and the connection to the County of Los Angeles Department of Public Works main sewer line.

INDEX MAP

SCALE: 1"=40'

TR 61105

NO.	REVISION	REVISED BY	APPROVED BY	DATE
1	REVISED PROFILE PER UPDATED CROSSINGS	JY	[Signature]	11/15/19

COUNTY SANITATION DISTRICT (CSD) NOTES:

1. No connection for the disposal of industrial wastes shall be made to sewers shown on these drawings until a permit for industrial waste discharge has been issued by the County Sanitation District.
2. At least three (3) working days prior to breaking into or connecting to County Sanitation District sewer or manhole and prior to final acceptance of the project, a County Sanitation District inspector shall be notified.
3. All work involving CSD sewer or manholes shall be in accordance with the latest edition of the Standard Specifications for Public Works Construction, and CSD's Special Amendments to the Standard Specifications for Public Works Construction and Standard Drawings for Construction. A copy of the Amendments and Standard Drawings may be obtained at the Public Works (Room 110) located at 200 South Fremont Avenue, Anaheim, CA 92805.

PROFILE ALIGNMENT AND GRADE OF PAGE 1

SANITARY SEWERS

TO BE CONSTRUCTED BY

TRACT NO. 61105-01 TO 16 PC NO. 12220A

10 SHEETS: 19 PAGES

COUNTY OF LOS ANGELES CALIFORNIA

EIMP2019000179

CSDM INDEX: N-1217, N-1218, N-1256, N-1257

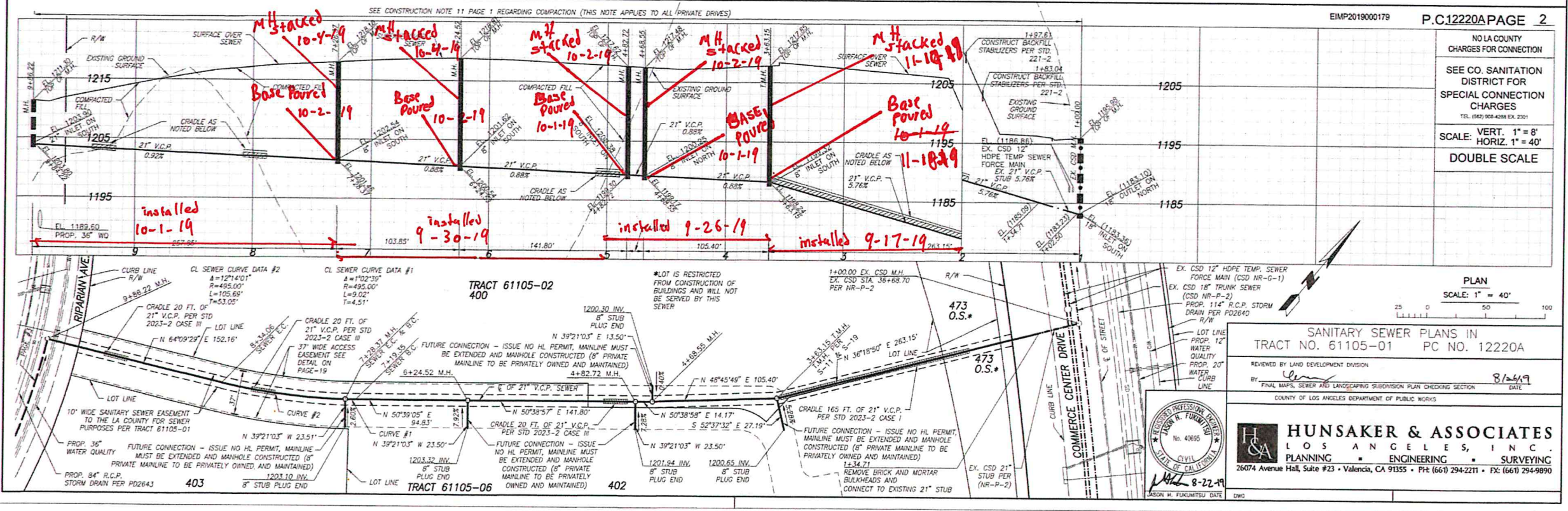
APPROVED BY [Signature] DATE: 8/27/19

APPROVED BY [Signature] DATE: 8/27/19

APPROVED BY [Signature] DATE: 9/1/19

APPROVED BY [Signature] DATE: 8/23/2019

APPROVED BY [Signature] DATE: 8-22-19



EIMP2019000179 P.C.12220A PAGE 2

NO LA COUNTY CHARGES FOR CONNECTION

SEE CO. SANITATION DISTRICT FOR SPECIAL CONNECTION CHARGES

SCALE: VERT. 1"=8'
HORIZ. 1"=40'

DOUBLE SCALE

PLAN SCALE: 1"=40'

SANITARY SEWER PLANS IN TRACT NO. 61105-01 PC NO. 12220A

REVIEWED BY LAND DEVELOPMENT DIVISION

BY [Signature] DATE: 8/24/19

COUNTY OF LOS ANGELES DEPARTMENT OF PUBLIC WORKS

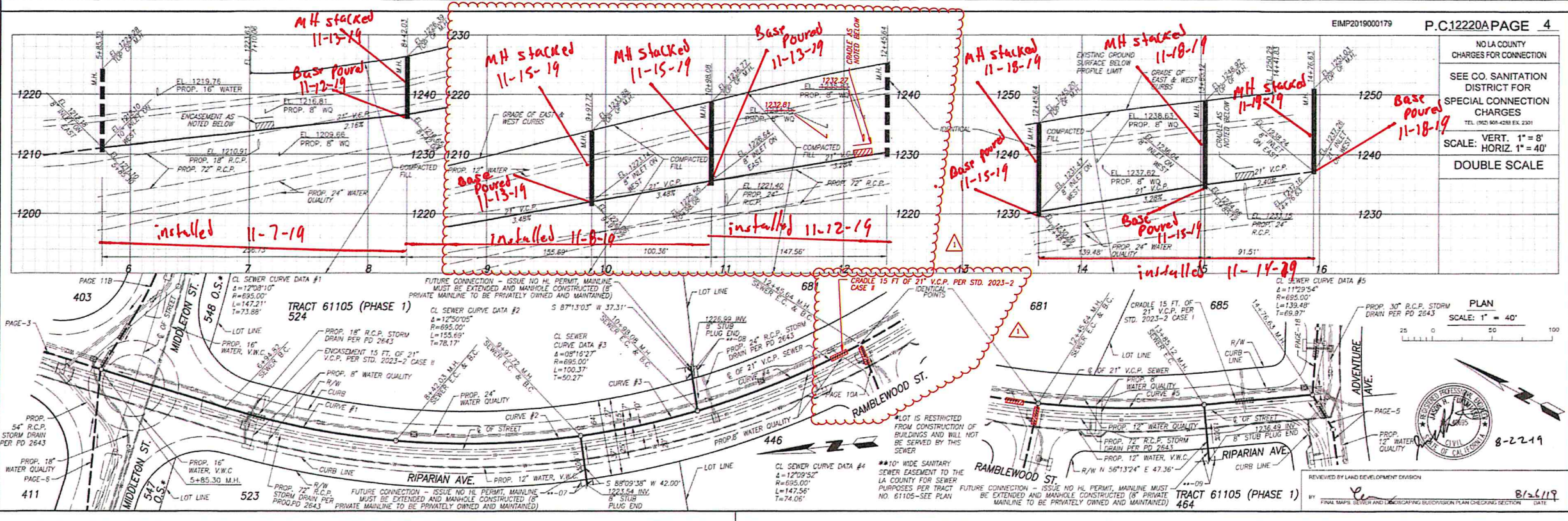
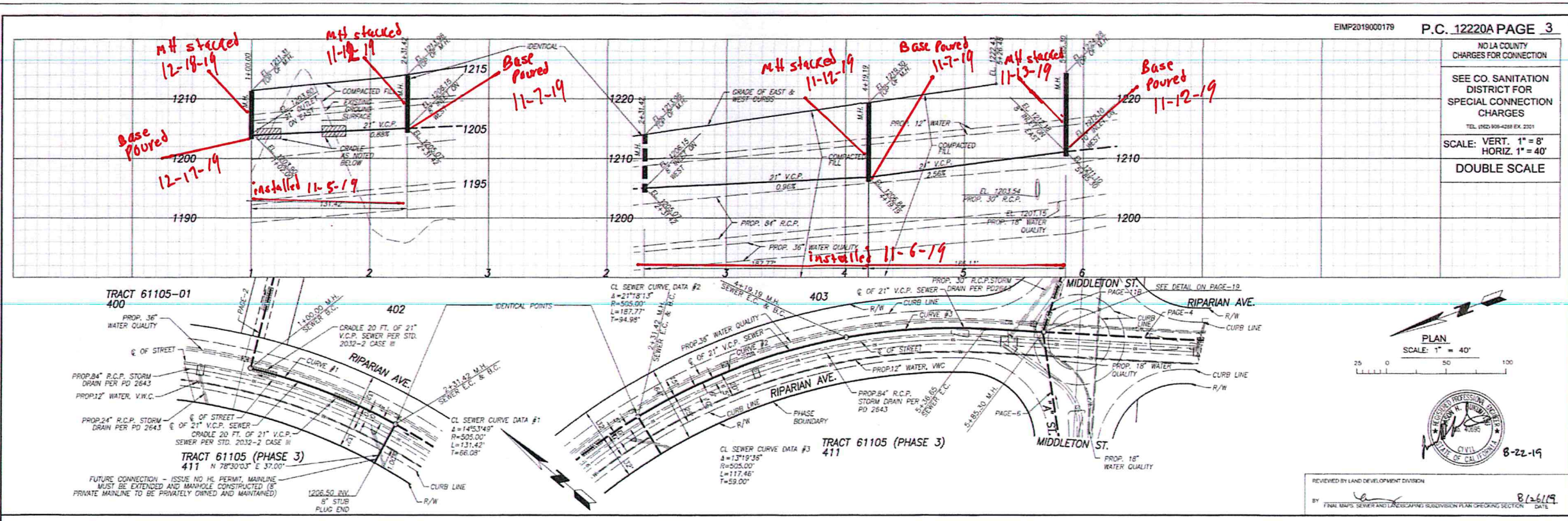
HUNSAKER & ASSOCIATES

LOS ANGELES, INC.

PLANNING • ENGINEERING • SURVEYING

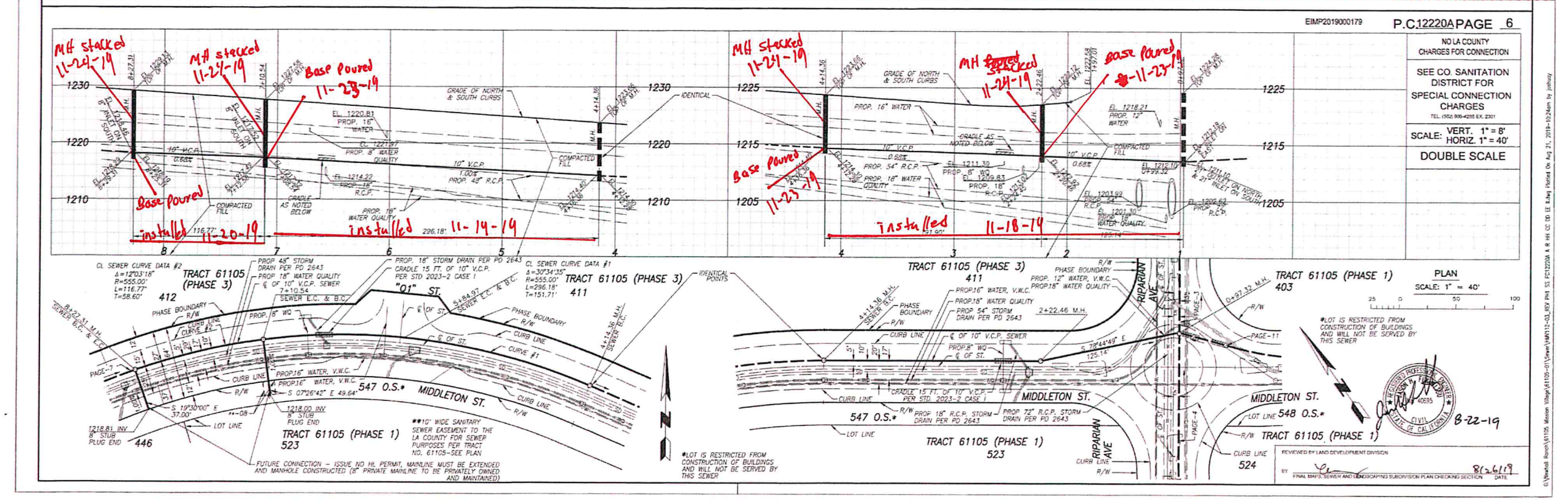
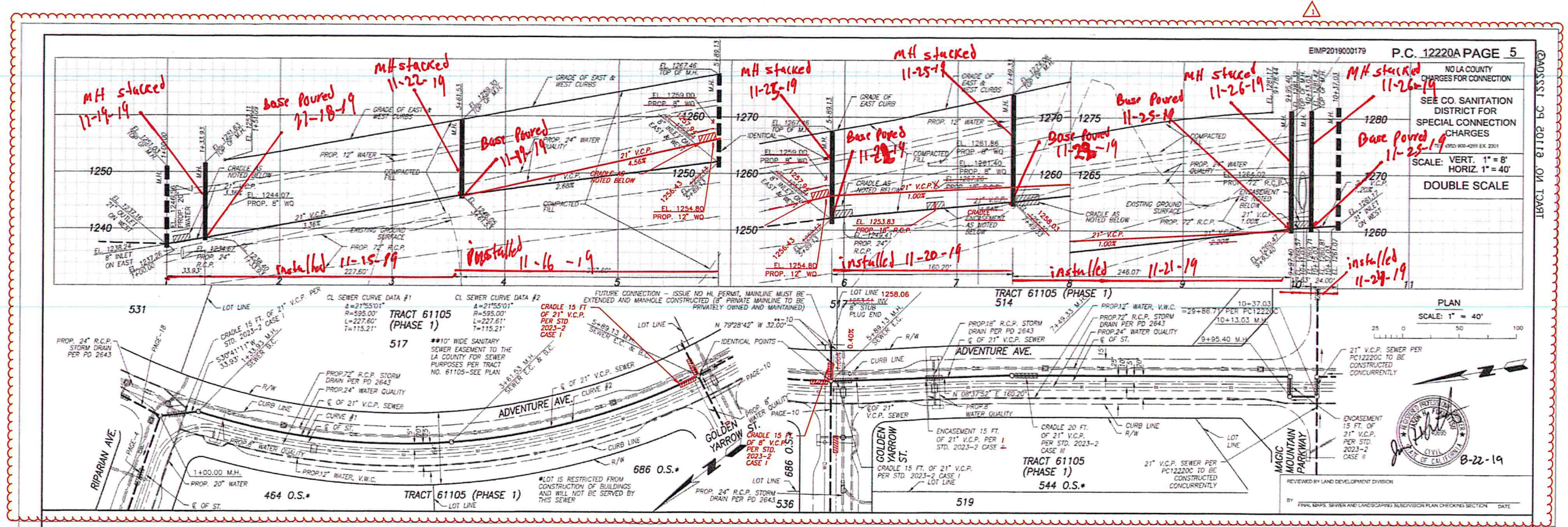
26074 Avenue Hill, Suite #23 • Valencia, CA 91355 • PH: (661) 294-2211 • FX: (661) 294-9890

DATE: 8-22-19

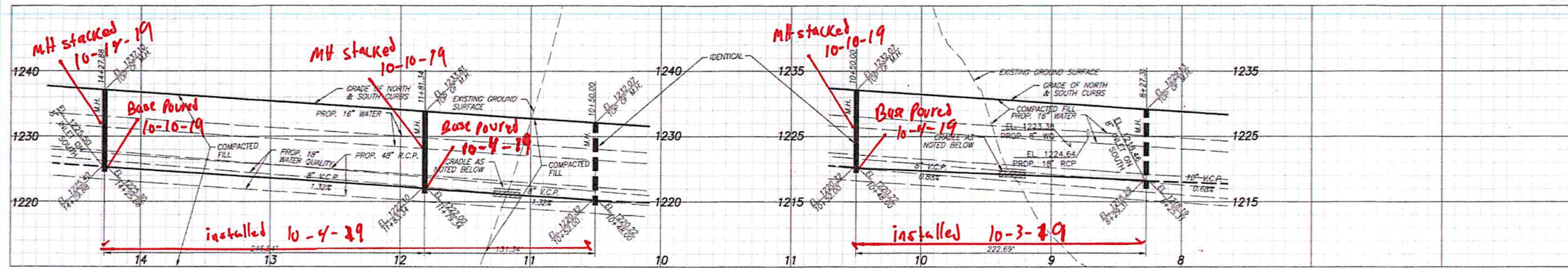


18VCL110 61102 BC 1333000

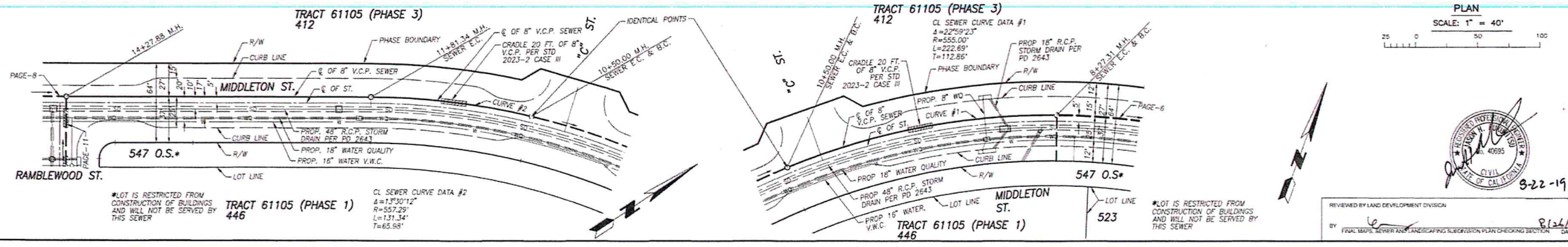
0:\Work\Bentley\B1105-01\Drawings\B1105-01\11-01\11-01-01.dwg PLOT SS 11/22/2019 4:18:11 PM CC: DO: DE: Eddy Printed On: Aug 21, 2019 9:26am by jolly



CROSS SECTION ON TRACT
 EIMP2019000179
 P.C. 12220A PAGE 5
 P.C. 12220A PAGE 6
 8-22-19
 8-26-19
 8-26-19

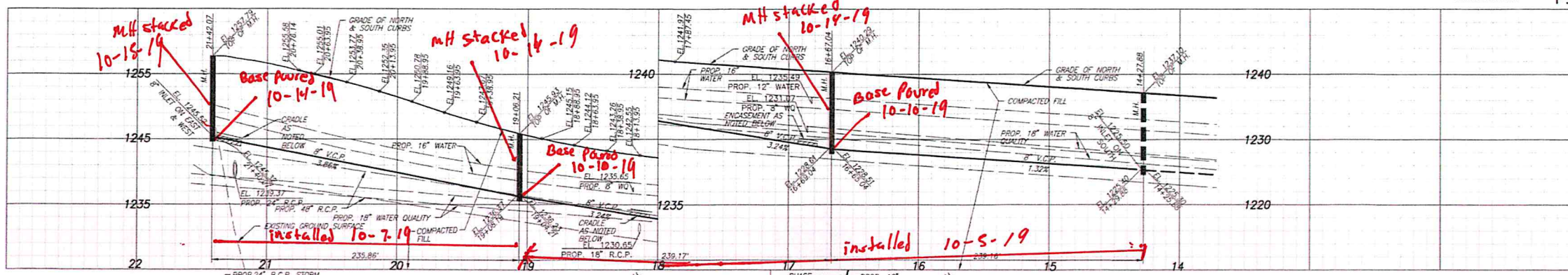


NO LA COUNTY CHARGES FOR CONNECTION
 SEE CO. SANITATION DISTRICT FOR SPECIAL CONNECTION CHARGES
 TEL: (952) 458-4288 EX. 2301
 SCALE: VERT. 1" = 8'
 HORIZ. 1" = 40'
 DOUBLE SCALE

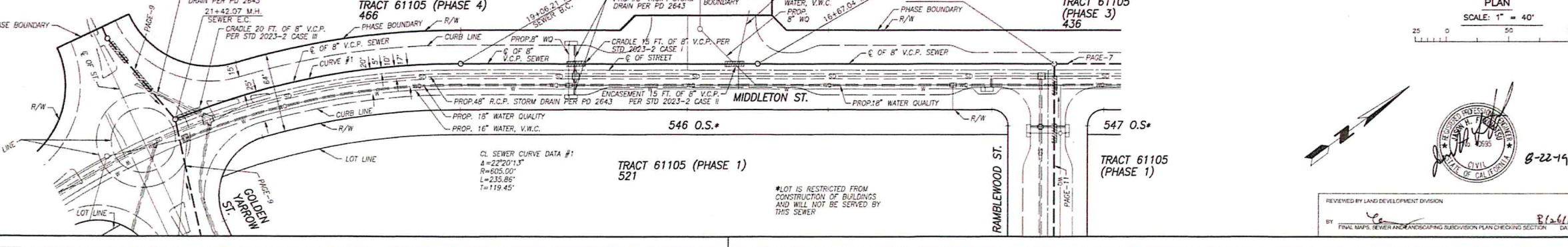


PLAN SCALE: 1" = 40'

REVIEWED BY LAND DEVELOPMENT DIVISION
 BY: [Signature] DATE: 8/22/19
 FINAL MAPS, SEWER AND LANDSCAPING SUPERVISION PLAN CHECKING SECTION



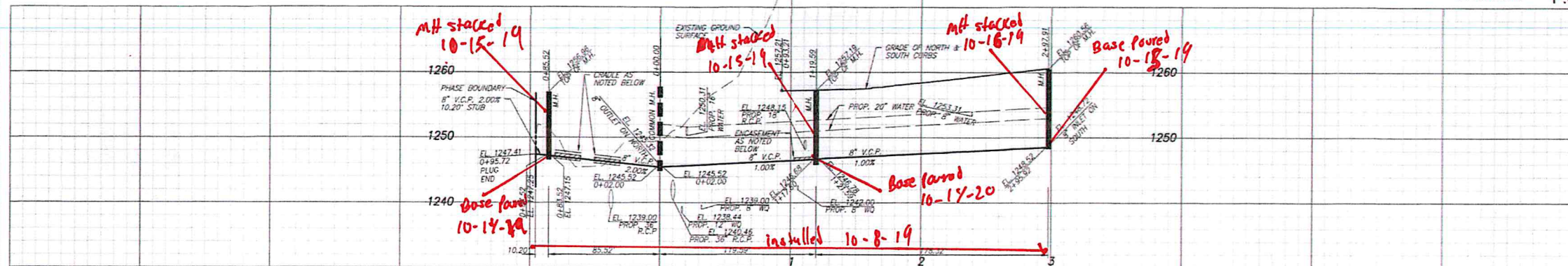
NO LA COUNTY CHARGES FOR CONNECTION
 SEE CO. SANITATION DISTRICT FOR SPECIAL CONNECTION CHARGES
 TEL: (952) 458-4288 EX. 2301
 SCALE: VERT. 1" = 8'
 HORIZ. 1" = 40'
 DOUBLE SCALE



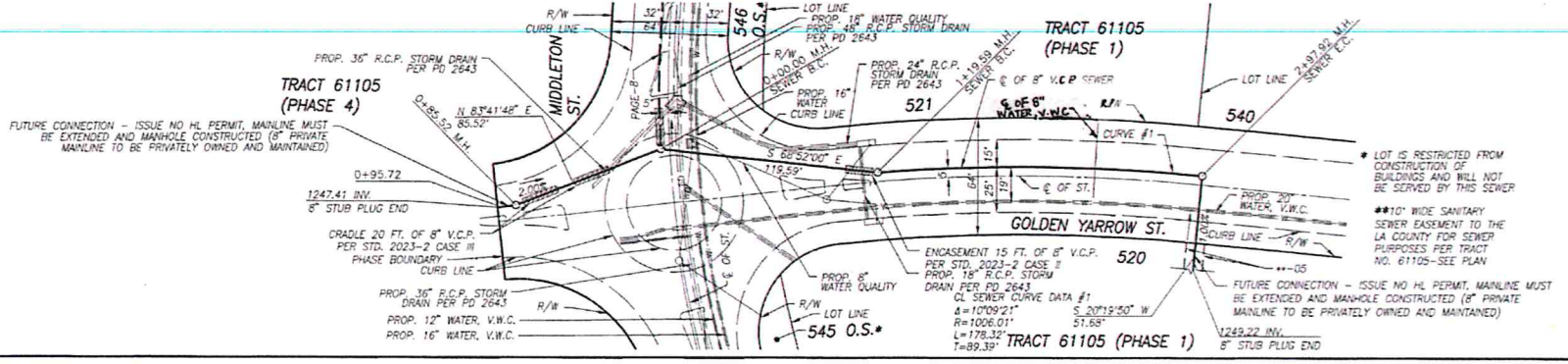
PLAN SCALE: 1" = 40'

REVIEWED BY LAND DEVELOPMENT DIVISION
 BY: [Signature] DATE: 8-22-19
 FINAL MAPS, SEWER AND LANDSCAPING SUPERVISION PLAN CHECKING SECTION

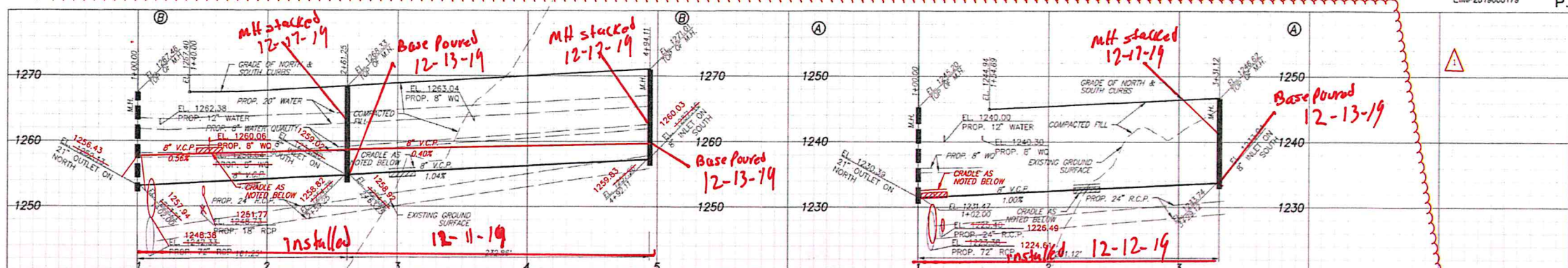
08/22/2019 11:53am by jphilly
 18VCI MO-ELTOR BC 1555062



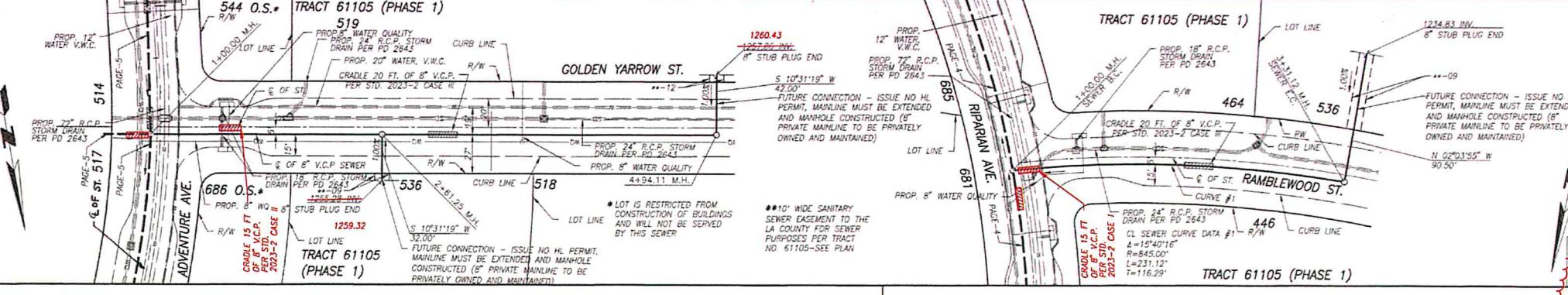
NO LA COUNTY CHARGES FOR CONNECTION
 SEE CO. SANITATION DISTRICT FOR SPECIAL CONNECTION CHARGES
 TEL. (924) 958-4281 EX. 2301
 SCALE: VERT. 1" = 8'
 HORIZ. 1" = 40'
 DOUBLE SCALE



PLAN
 SCALE: 1" = 40'
 25 0 50 100
 CIVIL ENGINEER
 8-22-19
 REVIEWED BY LAND DEVELOPMENT DIVISION
 FINAL MAPS, SEWER AND LANDSCAPING SUBMISSION PLAN CHECKING SECTION
 DATE 8/26/19

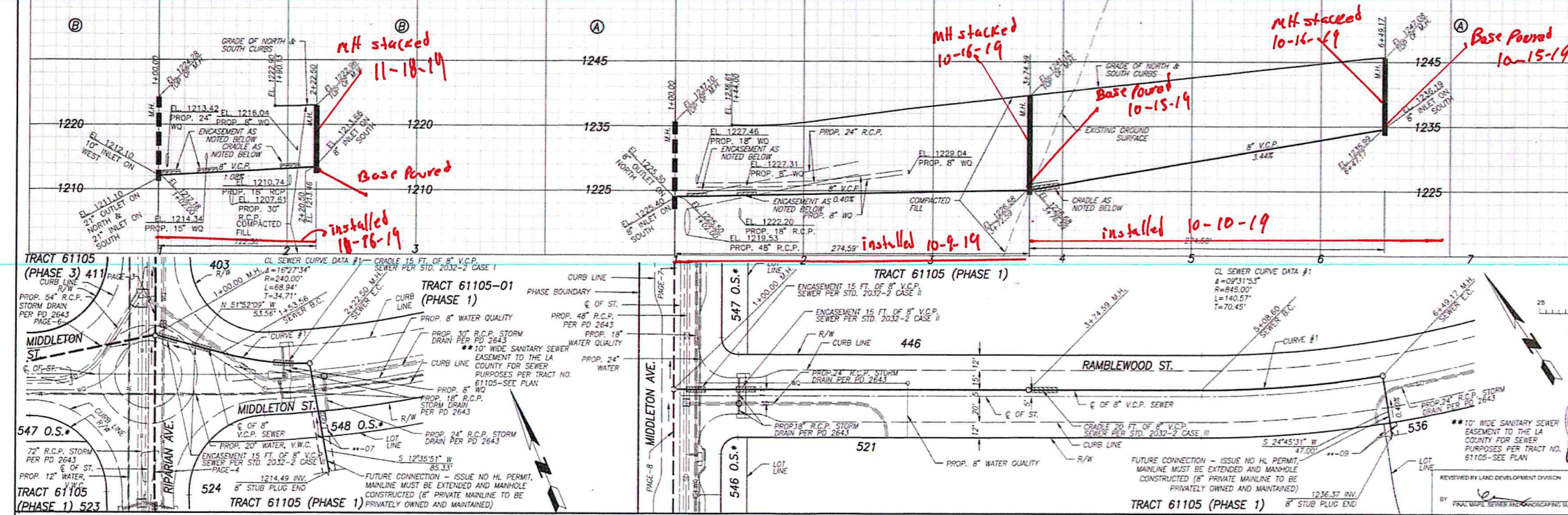


NO LA COUNTY CHARGES FOR CONNECTION
 SEE CO. SANITATION DISTRICT FOR SPECIAL CONNECTION CHARGES
 TEL. (924) 958-4281 EX. 2301
 SCALE: VERT. 1" = 8'
 HORIZ. 1" = 40'
 DOUBLE SCALE



PLAN
 SCALE: 1" = 40'
 25 0 50 100
 CIVIL ENGINEER
 8-22-19
 REVIEWED BY LAND DEVELOPMENT DIVISION
 FINAL MAPS, SEWER AND LANDSCAPING SUBMISSION PLAN CHECKING SECTION
 DATE 8/26/19

© 2019 by J. J. & S. S. Engineering, Inc. All rights reserved. No part of this document may be reproduced without written permission from J. J. & S. S. Engineering, Inc.

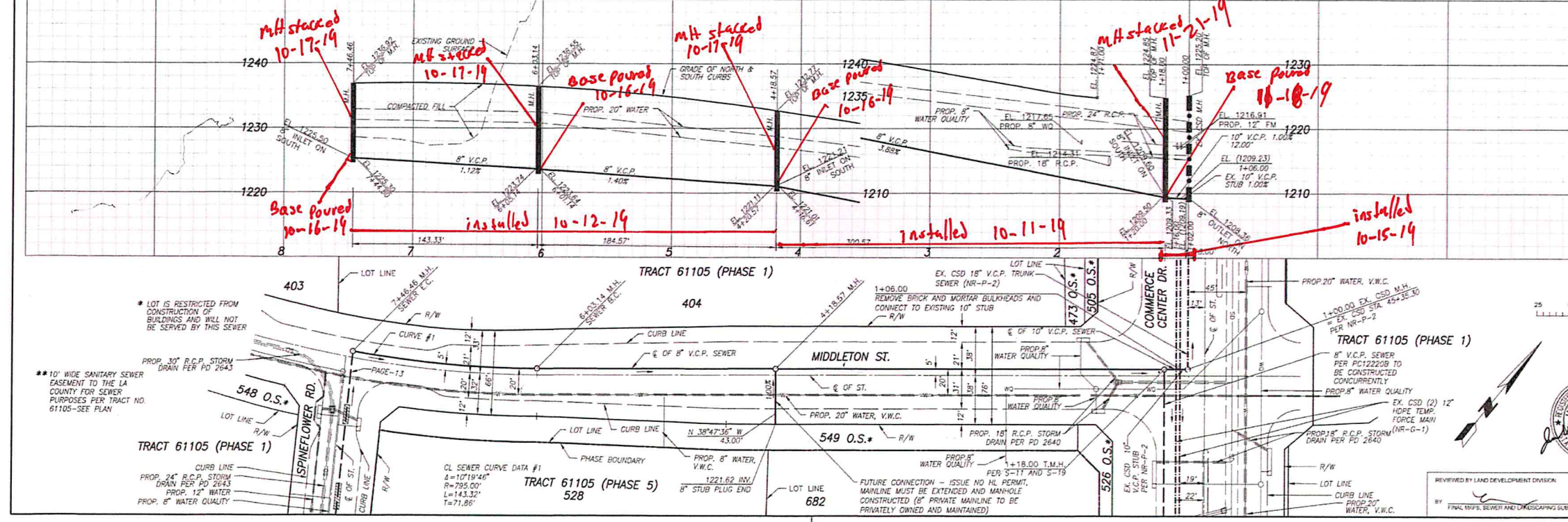


NO LA COUNTY CHARGES FOR CONNECTION
 SEE CO. SANITATION DISTRICT FOR SPECIAL CONNECTION CHARGES
 TEL. (952) 958-4218 EX. 2201
 SCALE: VERT. 1" = 8'
 HORIZ. 1" = 40'
 DOUBLE SCALE

PLAN SCALE: 1" = 40'

*LOT IS RESTRICTED FROM CONSTRUCTION OF BUILDINGS AND WILL NOT BE SERVED BY THIS SEWER

REVIEWED BY LAND DEVELOPMENT DIVISION
 BY: [Signature] DATE: 8/26/19



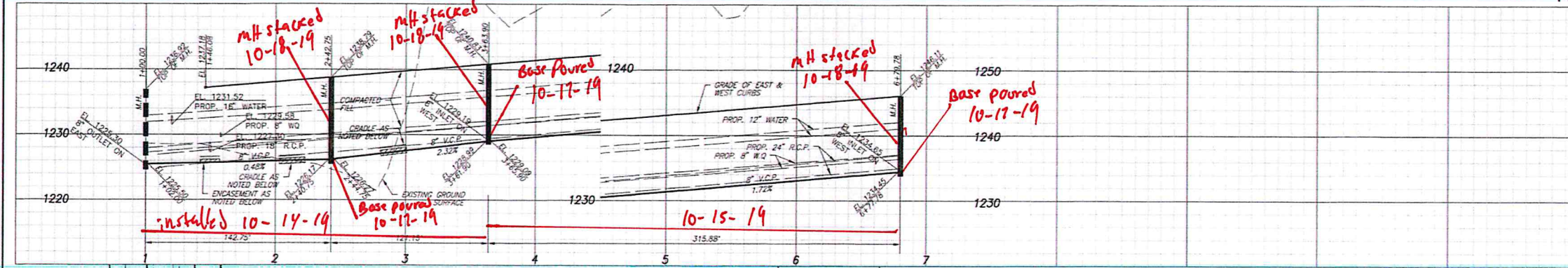
NO LA COUNTY CHARGES FOR CONNECTION
 SEE CO. SANITATION DISTRICT FOR SPECIAL CONNECTION CHARGES
 TEL. (952) 958-4218 EX. 2201
 SCALE: VERT. 1" = 8'
 HORIZ. 1" = 40'
 DOUBLE SCALE

PLAN SCALE: 1" = 40'

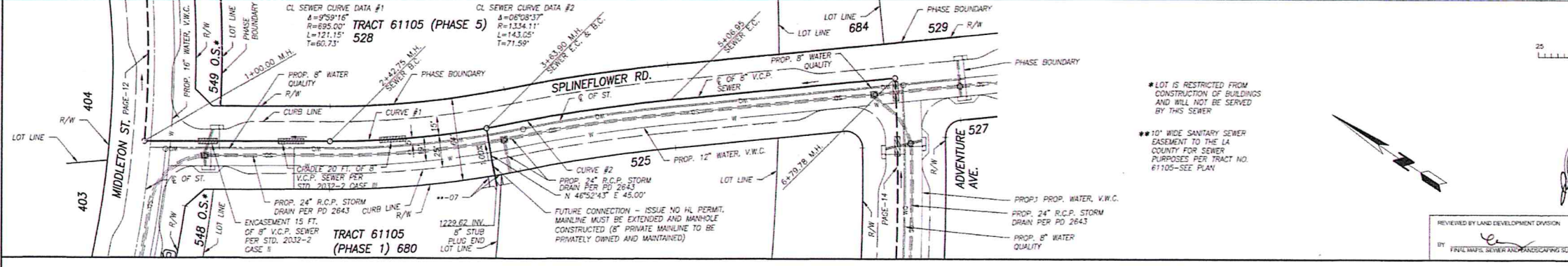
*LOT IS RESTRICTED FROM CONSTRUCTION OF BUILDINGS AND WILL NOT BE SERVED BY THIS SEWER

REVIEWED BY LAND DEVELOPMENT DIVISION
 BY: [Signature] DATE: 8/26/19

12/22/2019 10:11:00 AM
 C:\Users\Reed\Documents\61105-01\Sanitary\61105-01_Sanitary\61105-01_Sanitary.dwg
 PLOT: 12220A.PAGE 11
 PLOT: 12220A.PAGE 12
 PLOT: 12220A.PAGE 13
 PLOT: 12220A.PAGE 14
 PLOT: 12220A.PAGE 15
 PLOT: 12220A.PAGE 16
 PLOT: 12220A.PAGE 17
 PLOT: 12220A.PAGE 18
 PLOT: 12220A.PAGE 19
 PLOT: 12220A.PAGE 20
 PLOT: 12220A.PAGE 21
 PLOT: 12220A.PAGE 22
 PLOT: 12220A.PAGE 23
 PLOT: 12220A.PAGE 24
 PLOT: 12220A.PAGE 25
 PLOT: 12220A.PAGE 26
 PLOT: 12220A.PAGE 27
 PLOT: 12220A.PAGE 28
 PLOT: 12220A.PAGE 29
 PLOT: 12220A.PAGE 30
 PLOT: 12220A.PAGE 31
 PLOT: 12220A.PAGE 32
 PLOT: 12220A.PAGE 33
 PLOT: 12220A.PAGE 34
 PLOT: 12220A.PAGE 35
 PLOT: 12220A.PAGE 36
 PLOT: 12220A.PAGE 37
 PLOT: 12220A.PAGE 38
 PLOT: 12220A.PAGE 39
 PLOT: 12220A.PAGE 40
 PLOT: 12220A.PAGE 41
 PLOT: 12220A.PAGE 42
 PLOT: 12220A.PAGE 43
 PLOT: 12220A.PAGE 44
 PLOT: 12220A.PAGE 45
 PLOT: 12220A.PAGE 46
 PLOT: 12220A.PAGE 47
 PLOT: 12220A.PAGE 48
 PLOT: 12220A.PAGE 49
 PLOT: 12220A.PAGE 50
 PLOT: 12220A.PAGE 51
 PLOT: 12220A.PAGE 52
 PLOT: 12220A.PAGE 53
 PLOT: 12220A.PAGE 54
 PLOT: 12220A.PAGE 55
 PLOT: 12220A.PAGE 56
 PLOT: 12220A.PAGE 57
 PLOT: 12220A.PAGE 58
 PLOT: 12220A.PAGE 59
 PLOT: 12220A.PAGE 60
 PLOT: 12220A.PAGE 61
 PLOT: 12220A.PAGE 62
 PLOT: 12220A.PAGE 63
 PLOT: 12220A.PAGE 64
 PLOT: 12220A.PAGE 65
 PLOT: 12220A.PAGE 66
 PLOT: 12220A.PAGE 67
 PLOT: 12220A.PAGE 68
 PLOT: 12220A.PAGE 69
 PLOT: 12220A.PAGE 70
 PLOT: 12220A.PAGE 71
 PLOT: 12220A.PAGE 72
 PLOT: 12220A.PAGE 73
 PLOT: 12220A.PAGE 74
 PLOT: 12220A.PAGE 75
 PLOT: 12220A.PAGE 76
 PLOT: 12220A.PAGE 77
 PLOT: 12220A.PAGE 78
 PLOT: 12220A.PAGE 79
 PLOT: 12220A.PAGE 80
 PLOT: 12220A.PAGE 81
 PLOT: 12220A.PAGE 82
 PLOT: 12220A.PAGE 83
 PLOT: 12220A.PAGE 84
 PLOT: 12220A.PAGE 85
 PLOT: 12220A.PAGE 86
 PLOT: 12220A.PAGE 87
 PLOT: 12220A.PAGE 88
 PLOT: 12220A.PAGE 89
 PLOT: 12220A.PAGE 90
 PLOT: 12220A.PAGE 91
 PLOT: 12220A.PAGE 92
 PLOT: 12220A.PAGE 93
 PLOT: 12220A.PAGE 94
 PLOT: 12220A.PAGE 95
 PLOT: 12220A.PAGE 96
 PLOT: 12220A.PAGE 97
 PLOT: 12220A.PAGE 98
 PLOT: 12220A.PAGE 99
 PLOT: 12220A.PAGE 100

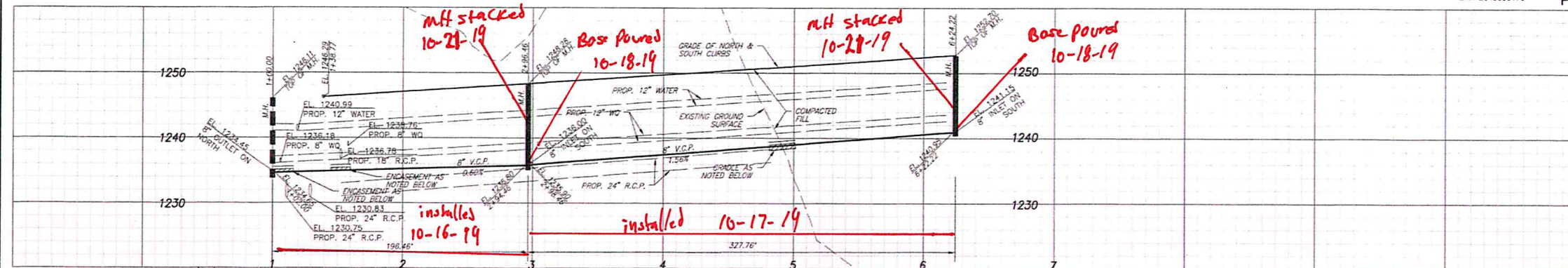


NO LA COUNTY CHARGES FOR CONNECTION
 SEE CO. SANITATION DISTRICT FOR SPECIAL CONNECTION CHARGES
 TEL: (562) 959-4388 EX. 2301
 SCALE: VERT. 1" = 8'
 HORIZ. 1" = 40'
 DOUBLE SCALE

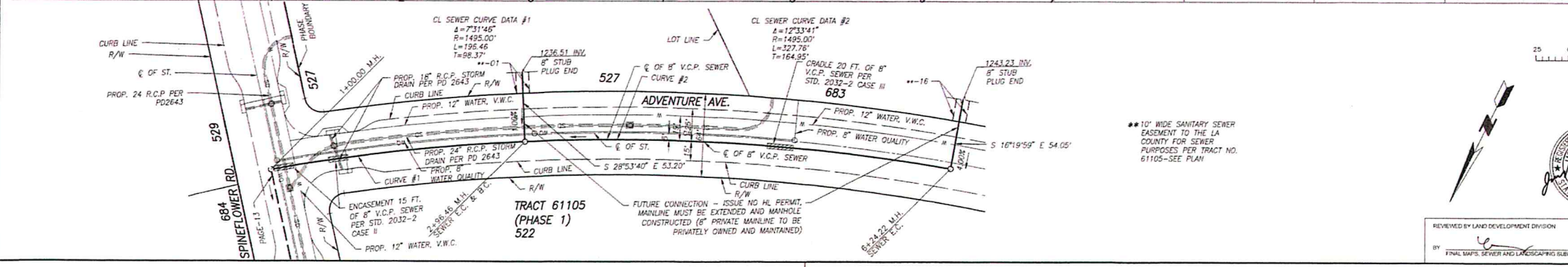


NO LA COUNTY CHARGES FOR CONNECTION
 SEE CO. SANITATION DISTRICT FOR SPECIAL CONNECTION CHARGES
 TEL: (562) 959-4388 EX. 2301
 SCALE: VERT. 1" = 8'
 HORIZ. 1" = 40'
 DOUBLE SCALE

REVIEWED BY LAND DEVELOPMENT DIVISION
 BY: [Signature] DATE: 8/26/19



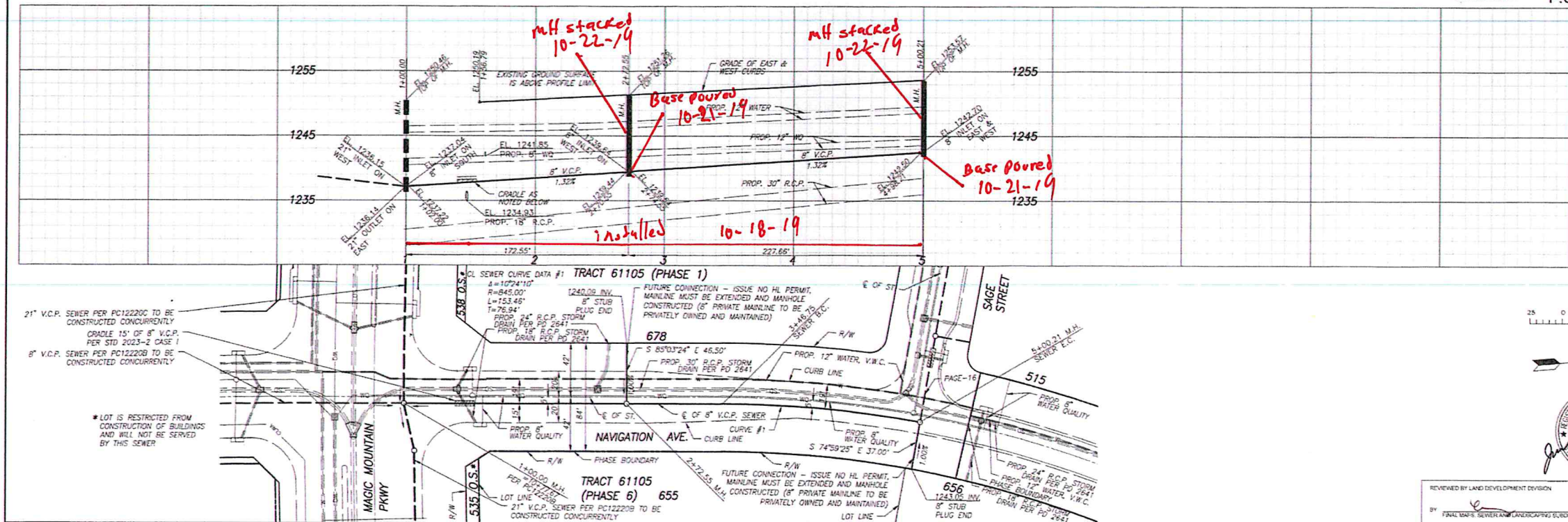
NO LA COUNTY CHARGES FOR CONNECTION
 SEE CO. SANITATION DISTRICT FOR SPECIAL CONNECTION CHARGES
 TEL: (562) 959-4388 EX. 2301
 SCALE: VERT. 1" = 8'
 HORIZ. 1" = 40'
 DOUBLE SCALE



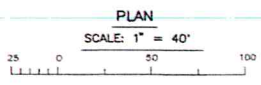
NO LA COUNTY CHARGES FOR CONNECTION
 SEE CO. SANITATION DISTRICT FOR SPECIAL CONNECTION CHARGES
 TEL: (562) 959-4388 EX. 2301
 SCALE: VERT. 1" = 8'
 HORIZ. 1" = 40'
 DOUBLE SCALE

REVIEWED BY LAND DEVELOPMENT DIVISION
 BY: [Signature] DATE: 8/26/19

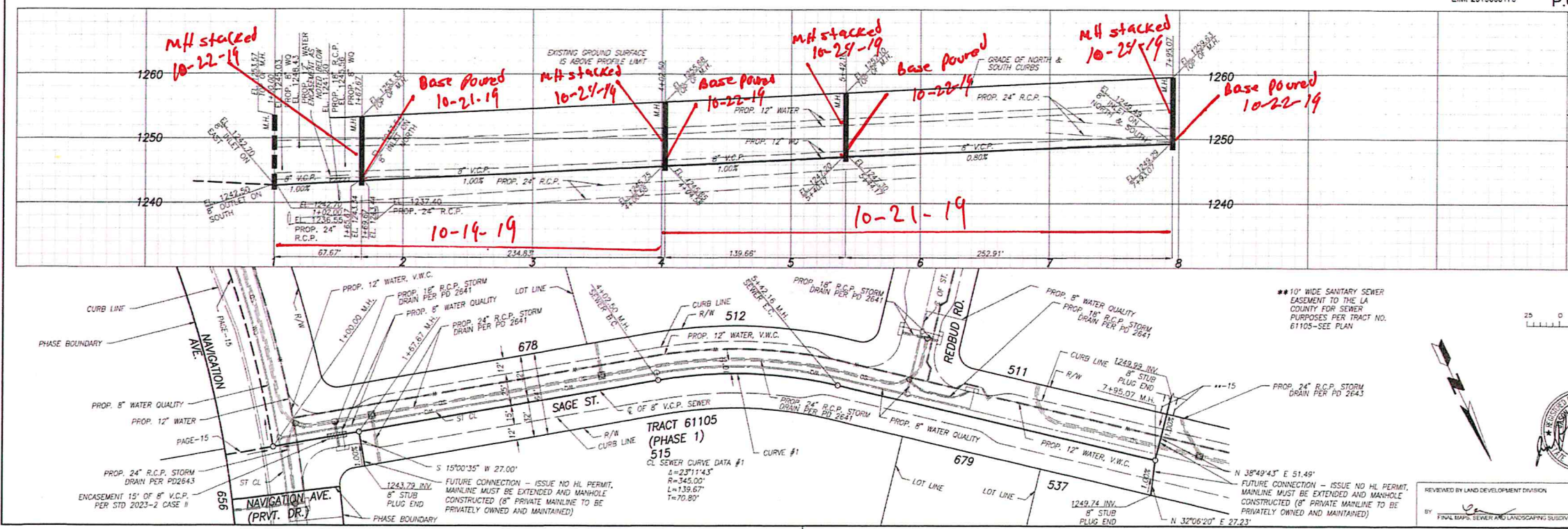
CROSS SECTION 10119 ON TRACT
 © Veritas Beach/61105 Mission Village/61105-01/Sewer/61105-07_Plan_P13 P14 P15 P16 P17 P18 P19 P20 P21 P22 P23 P24 P25 P26 P27 P28 P29 P30 P31 P32 P33 P34 P35 P36 P37 P38 P39 P40 P41 P42 P43 P44 P45 P46 P47 P48 P49 P50 P51 P52 P53 P54 P55 P56 P57 P58 P59 P60 P61 P62 P63 P64 P65 P66 P67 P68 P69 P70 P71 P72 P73 P74 P75 P76 P77 P78 P79 P80 P81 P82 P83 P84 P85 P86 P87 P88 P89 P90 P91 P92 P93 P94 P95 P96 P97 P98 P99 P100
 2019-11-16, 11:50 AM by jphayes



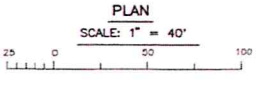
NO LA COUNTY CHARGES FOR CONNECTION
 SEE CO. SANITATION DISTRICT FOR SPECIAL CONNECTION CHARGES
 TEL. (924) 908-4208 EX. 2301
 SCALE: VERT. 1" = 8'
 HORIZ. 1" = 40'
 DOUBLE SCALE



REVIEWED BY LAND DEVELOPMENT DIVISION
 BY: [Signature] DATE: 8/26/19

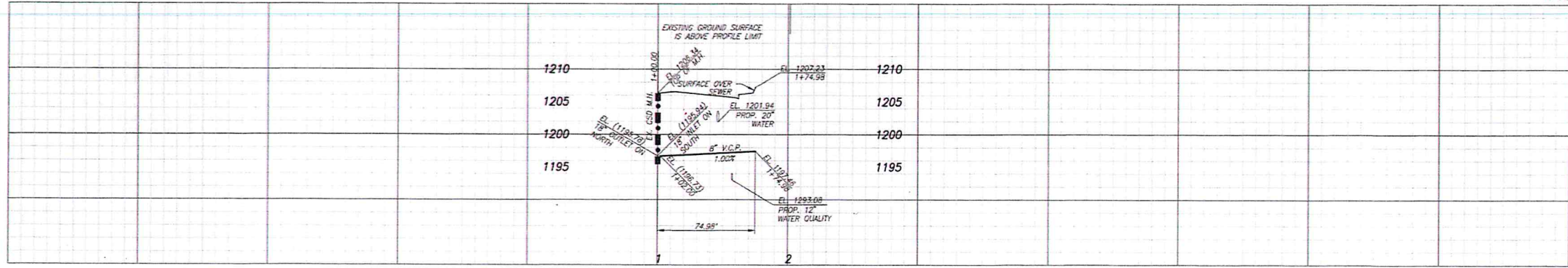


NO LA COUNTY CHARGES FOR CONNECTION
 SEE CO. SANITATION DISTRICT FOR SPECIAL CONNECTION CHARGES
 TEL. (924) 908-4208 EX. 2301
 SCALE: VERT. 1" = 8'
 HORIZ. 1" = 40'
 DOUBLE SCALE



REVIEWED BY LAND DEVELOPMENT DIVISION
 BY: [Signature] DATE: 8/26/19

LIBVCI NO 01102 EC 1335000



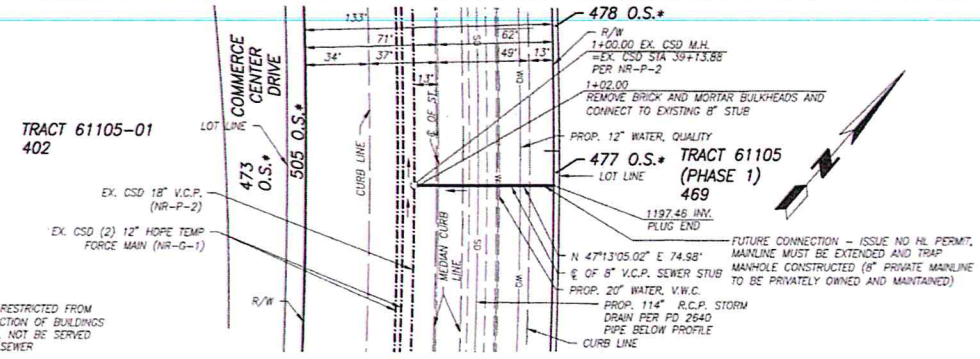
NO LA COUNTY CHARGES FOR CONNECTION

SEE CO. SANITATION DISTRICT FOR SPECIAL CONNECTION CHARGES

TEL. (562) 908-4288 EX. 2301

SCALE: VERT. 1" = 8'
HORIZ. 1" = 40'

DOUBLE SCALE



PLAN SCALE: 1" = 40'

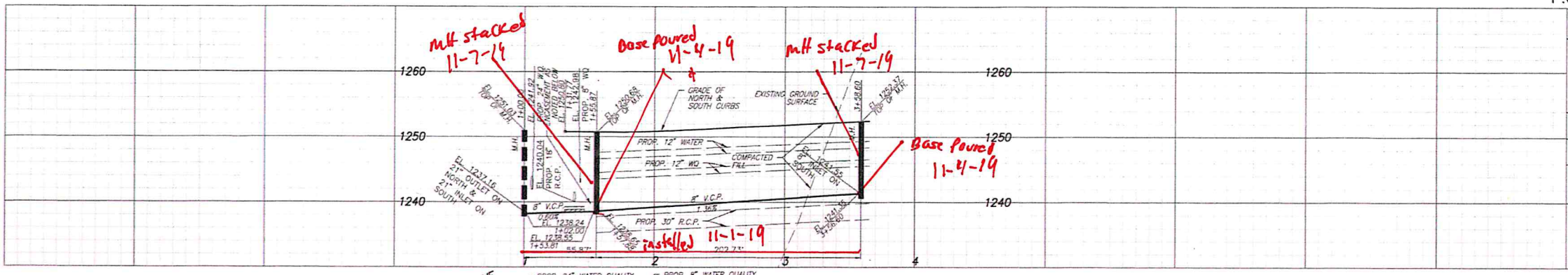


REVIEWED BY LAND DEVELOPMENT DIVISION

BY: [Signature] DATE: 8/26/19

FINAL MAPS, SEWER AND LANDSCAPING SUBDIVISION PLAN CHECKING SECTION

*LOT IS RESTRICTED FROM CONSTRUCTION OF BUILDINGS AND WILL NOT BE SERVED BY THIS SEWER



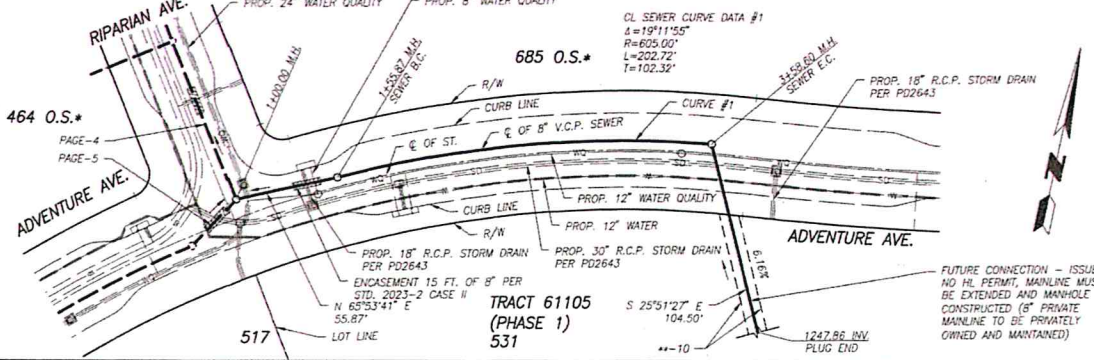
NO LA COUNTY CHARGES FOR CONNECTION

SEE CO. SANITATION DISTRICT FOR SPECIAL CONNECTION CHARGES

TEL. (562) 908-4288 EX. 2301

SCALE: VERT. 1" = 8'
HORIZ. 1" = 40'

DOUBLE SCALE



PLAN SCALE: 1" = 40'



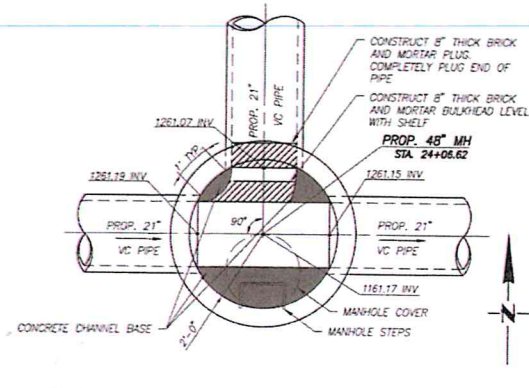
REVIEWED BY LAND DEVELOPMENT DIVISION

BY: [Signature] DATE: 8/26/19

FINAL MAPS, SEWER AND LANDSCAPING SUBDIVISION PLAN CHECKING SECTION

*LOT IS RESTRICTED FROM CONSTRUCTION OF BUILDINGS AND WILL NOT BE SERVED BY THIS SEWER

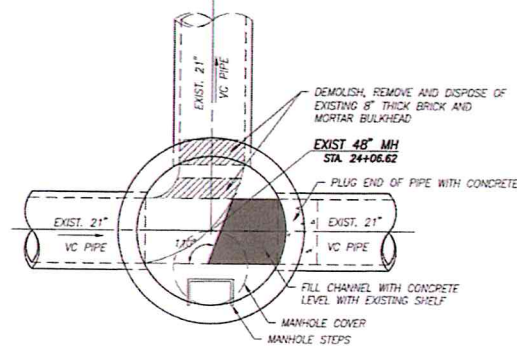
© Vertical Research (11/10), Wilson, Whipple (11/10-01) (Seam) (11/11-09), JEV (PH) SS (12/22/20) A R (H) CD CD EE 8:44p Printed On Aug 21, 2019 - 11:56am by dwp



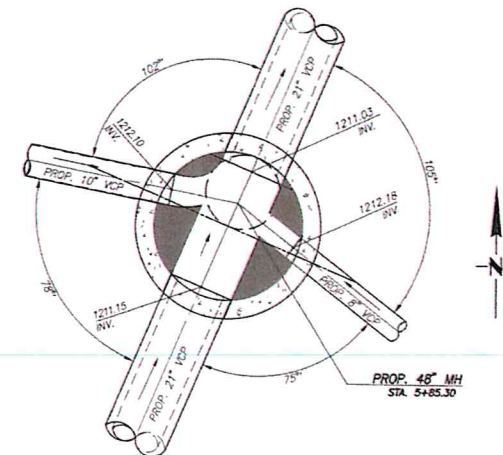
INTERIM CONDITION
(SEWAGE FLOWS INTO EAST PIPE)

MODIFIED MH BASE AT STA. 24+06.62 PER PC 12220C AND PAGE 5 PER PC 12220A

SCALE: 1/2" = 1'-0"

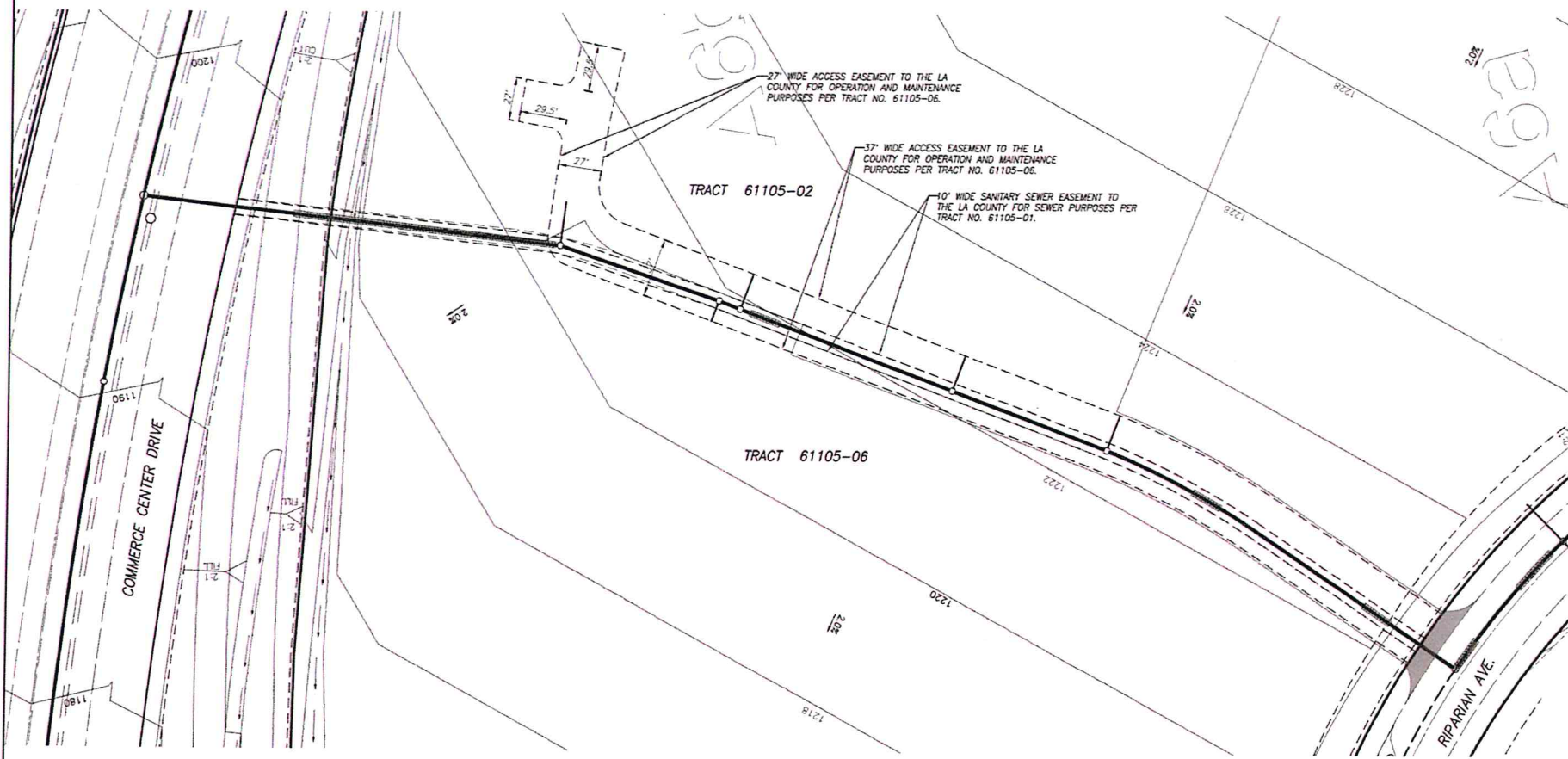


ULTIMATE CONDITION
(SEWAGE FLOWS INTO NORTH PIPE)

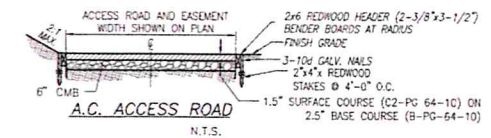


STA. 5+85.30 ON "RIPARIAN AVE" AND "MIDDLETON ST" STREET PER PAGE 3

SCALE: 1/2" = 1'-0"



ACCESS ROAD AND EASEMENT
SCALE: 1" = 40'



GEOTECHNICAL NOTES:
1. ALL RECOMMENDED MITIGATION MEASURES, PER THE GEOTECHNICAL ENGINEER.

NOTE: PROVIDE REPLACEMENT PLANS TO SMD FOR REVIEW AND APPROVAL AT THE TIME OF THIS TEMPORARY ACCESS ROAD REPLACEMENT

Professional Engineer Seal for **James H. Williams**, License No. 10095, State of California. The seal is dated **5-22-19**.

REVIEWED BY LAND DEVELOPMENT DIVISION
BY: [Signature] DATE: 8/26/19
FINAL MAPS, SEWER AND LANDSCAPING SUBDIVISION PLAN CHECKING SECTION

18VCL1 MO' 81102 BC 13330V0@