

PROFILE ALIGNMENT AND GRADE OF SANITARY SEWERS TO BE CONSTRUCTED IN TRACT NO. 73203 ADDRESS FOR SINGLE LOT, PC NO. 12258 5 SHEETS: 10 PAGES COUNTY OF LOS ANGELES CALIFORNIA CSMD INDEX S-1706 & S-1707 EIMP 2016000381

BENCH MARKS BM: Y 10528 Elev: 70.414 PALOS VERDES QUAD NAVD83/2005 ADJ.

LEGAL DESCRIPTION THAT PORTION OF THE EAST 23 ACRES OF THE WEST 50 ACRES OF LOT "G" AS SHOWN ON MAP ACCOMPANYING THE FINAL DECREE OF PARTITION OF THE RANCHO LOS PALOS VERDES, HAD IN CASE NO. 2373, DISTRICT COURT, IN THE COUNTY OF LOS ANGELES, STATE OF CALIFORNIA, DESCRIBED AS FOLLOWS:

BOUNDED ON THE WEST BY THE EASTERLY BOUNDARY OF NORMANDIE AVENUE AS DESCRIBED IN THE DEED TO THE COUNTY OF LOS ANGELES, RECORDED IN BOOK 3816, PAGE 90, OF OFFICIAL RECORDS.

EXCEPT THEREFROM THAT PORTION THEREOF DESCRIBED AS PARCEL 1-2 IN FINAL ORDER OF CONDEMNATION, A CERTIFIED COPY OF WHICH RECORDED MAY 2, 1975 AS INSTRUMENT NO. 2942, OF OFFICIAL RECORDS.

TOGETHER WITH THAT PORTION OF NORMANDIE AVENUE VACATED BY RESOLUTION OF THE BOARD OF SUPERVISORS OF THE COUNTY OF LOS ANGELES, A CERTIFIED COPY OF WHICH RECORDED APRIL 20, 1978 AS INSTRUMENT NO. 78-417572, OF OFFICIAL RECORDS, THAT WOULD PASS WITH A LEGAL CONVEYANCE OF SAID LAND.

AS SHOWN AS EXHIBIT "A" ON THAT CERTIFICATE OF COMPLIANCE RECORDED MAY 20, 2013 AS INSTRUMENT NO. 20130754254, OF OFFICIAL RECORDS.

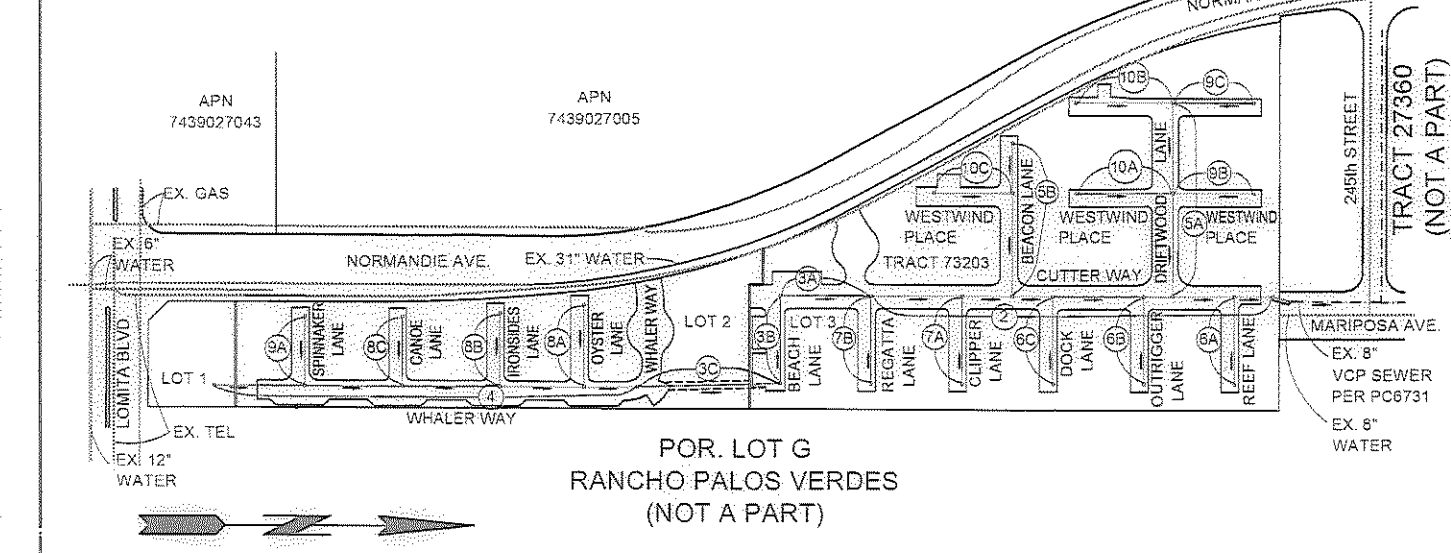


Table with 5 columns: NO., REVISION, REVISED BY, APPROVED BY, DATE. Includes notes about building and safety district office and flow direction.

- A. NOTES: 1. Every effort should be made to eliminate the discharge of non-stormwater from the project site at all times. 2. Eroded sediments and other pollutants must be retained on-site and may not be transported from the site by sheet flow, swales, area drains, natural drainage courses or wind. 3. Stockpiles of earth and other construction related materials must be protected from being transported from the site by the forces of wind or water. 4. Fuels, oils, solvents, and other toxic materials must be stored in accordance with their listing and are not to contaminate the soil and surface waters. All approved storage containers are to be protected from the weather. Spills must be cleaned up immediately and disposed of in a proper manner. Spills must not be washed into the drainage system. 5. Excess or waste concrete may not be washed into the public way or any other drainage system. Provisions shall be made to retain concrete wastes on-site until they can be disposed of as solid waste. 6. Trash and construction related solid wastes must be deposited into a covered receptacle to prevent contamination of rainwater and dispersal by wind. 7. Sediments and other materials may not be tracked from the site by vehicle traffic. The construction entrance roadways must be stabilized so as to inhibit sediments from being deposited into the public way. Accidental depositions must be swept up immediately and may not be washed down by rain or other means. 8. Any slopes with disturbed soils or denuded of vegetation must be stabilized so as to inhibit erosion by wind and water. 9. The following BMPs as outlined in, but not limited to, the latest edition of the California BMP Handbook (Construction) or Caltrans Stormwater Quality Handbooks (Construction Site BMP Manual), may apply during the construction of this project (additional measures may be required if deemed appropriate by the Project Engineer or the Building Official).

Table with 3 columns: EROSION CONTROL, NON-STORM WATER MANAGEMENT, WASTE MANAGEMENT AND MATERIALS POLLUTION CONTROL. Lists various control measures like scheduling, vegetation preservation, water conservation, etc.

Table with 3 columns: STANDARD PLANS, PRIVATE CONTRACT SANITARY SEWER PROCEDURAL MANUAL, COUNTY SANITATION DISTRICTS (CSD) NOTES. Lists standard plans for manholes, manhole frames, and CSD notes regarding disposal of industrial wastes.

- PRIVATE CONTRACT SEWER GENERAL NOTES: 1. A sewer construction permit shall be obtained and a fee paid for construction inspection and record plans to the County of Los Angeles Department of Public Works at the Permit Counter, 600 South Fremont Avenue, 6th floor, Alhambra, at least 10 hours prior to starting work under this permit. 2. When work is within a contract city, a sewer construction permit shall be obtained and a fee paid for construction inspection and record plans to the City. The contractor must contact the Director of Public Works of that City to determine the location to pay the inspection fees. 3. Prior to issuance of any permit, the contractor shall file a permit for excavations and trenches from the State of California Division of Industrial Safety, and a Certificate of Worker's Compensation Insurance with the Department of Public Works named as the Certificate Holder. 4. If work is done in a State Highway, a permit must be obtained from the State of California Division of Highways, 120 South Spring Street, Los Angeles, California. 5. The contractor shall contact the district office listed on the "Application for Construction Permit" to arrange for an acceptable construction start date. 6. Approval of this plan by the County of Los Angeles Department of Public Works does not constitute a representation as to accuracy of the location or the existence or nonexistence of any underground utility pipe or structure within the limits of this project. 7. All work shall be in accordance with the latest approved edition of the "Standard Specification for Public Works Construction" including supplements (if there are any) of Los Angeles Department of Public Works shall be notified 30 days prior to cancellation of the insurance policy. 8. The contractor's attention is directed to Section 7-10.2.4 of the "Standard Specifications for Public Works Construction" in regard to safety orders and shall conform to the "Minimum Public Safety Specification" as shown on County of Los Angeles Department of Public Works Standard Plan No. 8006-1. 9. Elevations are in feet above U.S.C. and G.S. sea level datum of 1988. 10. No revisions shall be made in these plans without the approval of the County of Los Angeles Department of Public Works. 11. No representative of the County of Los Angeles Department of Public Works will survey or layout any portion of the work. 12. Grades to which this improvement is to be constructed are shown on plans and profiles. Grade point for top of curb, centerline of streets, or centerline of alleys, is shown by circles on profiles at all points between said designed points. The grade shall be established so as to conform to a straight line drawn between said design points. 13. The private engineer shall furnish the County of Los Angeles Department of Public Works with grade sheets and stationing for all house laterals and branches and shall provide stakes for them at their proper locations with stationing plainly marked. All house laterals shall be constructed in a straight line and at right angles from the main line sewer except as shown on the plans. House laterals from chimneys shall not have an angle of less than 45 degrees with the M.L. sewer. Any change in alignment shall be requested in writing by the private engineer. 14. The private engineer shall furnish the house lateral depth at the property line below the top of curb elevation for each house lateral on the grade sheet. 15. An approved backwater valve is required when the pad is lower in elevation than the top of the next upstream manhole. 16. Contact Environmental Programs Division for an Industrial Waste Discharge Permit at (626) 458-3517.

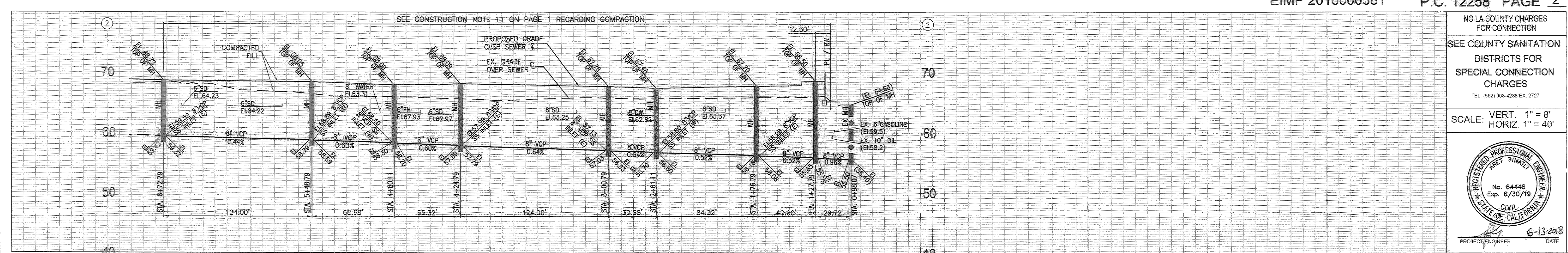
- NOTICE TO CONTRACTOR: 1. The developer shall be responsible for the continued maintenance of PC12258 sanitary sewer until the County formally accepts it for maintenance. All manhole, manholes and laterals shall be protected from damage and infiltration. 2. EXISTING SEWER SYSTEM SHALL BE OPERATIONAL AT ALL TIMES DURING CONSTRUCTION/RECONSTRUCTION. NOTIFY AFFECTED HOMEOWNERS AT LEAST 72 HRS IN ADVANCE. 3. SEWER VIDEO OF ALL SEGMENTS SHALL BE SUBMITTED PRIOR TO PARTIAL FIELD ACCEPTANCE (85% AND COMPLETED FIELD ACCEPTANCE (95%)). FINAL MAP AND AS-BUILT SEWER PLANS SHALL BE SUBMITTED PRIOR TO PARTIAL FIELD ACCEPTANCE. 4. SEWER LATERALS SHOWN ON PLANS ARE FOR REFERENCE ONLY. 5. ALL SANITARY SEWER MANHOLE SHAFTS AND FRAMES SHALL BE WATERTIGHT WITH BUTYL RUBBER MASTIC JOINT SEALING COMPOUND OR APPROVED EQUAL BY THE LA COUNTY DEPARTMENT OF PUBLIC WORKS. 6. RW BACKWATER VALVE IS REQUIRED FOR UNIT 97 ONLY.

- CONSTRUCTION NOTES: 1. Provide survey stakes on the property line or property lines produced at right angles to the sewer line at the centerline of each manhole. 2. Vitrified clay pipe joints shall be type "D" or "G" per "Standard Specifications for Public Works Construction" Section 208-2. 3. If a lower pipe is within three feet of the sewer, the sewer shall be encased, per LACDPW Standard Plan 2023-2, Case II, two feet on each side from the point of interference. 4. All joints between cast-iron pipe and vitrified clay shall be made with a rubber sleeve joint, type "D" (with bushing if necessary), per "Standard Specifications for Public Works Construction" Section 208-2. 5. House laterals to be constructed with inverts at the property line 6 feet below curb grade except as noted. 6. Wye or tee branches may be used for connections to the mainline sewers except as noted. 7. If during the course of construction it is determined that there is less than four feet of cover over the top of a mainline or house lateral V.C.P. sewer, which is not indicated on the plans, the pipes shall be encased per LACDPW Standard Plan 2023-2, Case II, unless otherwise approved by the County of Los Angeles Department of Public Works. 8. All structures shall be either brick sewer manholes per LACDPW Standard Plan S-3 (SPPWC 203-2), or precast concrete sewer manholes per LACDPW Standard Plan S-36 (SPPWC 200-3), or reinforced precast manhole per LACDPW Standard Plan 2023-2, except as noted. 9. Resurface all trenches within paved areas to meet Department of Public Works or California State Highway requirements in accordance with the permits. 10. Full compliance with Section 306-1.3 of the "Standard Specifications for Public Works Construction" will be required for backfill in street. Certification of backfill, compaction, and sand equivalents by a qualified civil engineer shall be provided by the permittee prior to the issuance of a Certificate of Partial Acceptance. 11. All backfill and fill outside of the street right of way shall be compacted to 90 percent of the maximum density as determined by ASTM Soil Compaction Test D 1557-78, Method "D" unless otherwise specified. This shall be certified by a qualified Civil Engineer. This certification shall be submitted to the Land Development Division, Permit Section of the County of Los Angeles Department of Public Works prior to the acceptance of the work by the County. 12. Manhole tops in unimproved rights of way to be six inches above finished grade. 13. Sewers to be tested for leakage per Section 306-1.4 of the "Standard Specification for Public Works Construction" and "Special Provisions for the Construction of Sanitary Sewer" if applicable. 14. Manhole tops in improved rights of way to be level with finished grade. 15. All wyes and/or house laterals are to be located at least 5 feet apart, and when possible, not closer than 5 feet to any manhole. 16. All pipe materials shall be extra strength vitrified clay pipe or ductile iron pipe or other approved materials by the County of Los Angeles Department of Public Works. 17. All ductile iron pipe shall be lined with Protecto 401 Ceramic Epoxy lining. 18. Cured in place pipe liner shall be used for all extra vitrified clay pipe if lining is required. 19. All Chimneys shall have terminal cleanout structure per SPPWC std. plan 204-2.

APPROVED BY: [Signature] ENGINEERING COUNTER DATE: 7/13/18

Professional Engineer seal for Michael A. Kenward, State of California, License No. L.S.5642. Includes text: ENGINEER/SURVEYOR STATEMENT REGARDING THE PRESENCE OF MONUMENTS WITHIN PROJECT LIMITS. I HEREBY ATTEST THAT I HAVE LOCATED AND REFERENCED ON THESE PLANS THE MONUMENTS EXISTING PRIOR TO CONSTRUCTION TO ENSURE PERPETUATION OF THEIR LOCATION IN ACCORDANCE WITH SECTION 9771 OF THE BUSINESS AND PROFESSIONS CODE. I FURTHER ATTEST THAT I HAVE PERFORMED A RECORD SEARCH AND FIELD INSPECTION TO IDENTIFY EXISTING MONUMENTS; SHALL SET SUFFICIENT CONTROLLING WITNESS, AND PERMANENT MONUMENTS; AND SHALL FILE THE REQUIRE CORNER RECORD OR SURVEY OF REFERENCES WITH THE COUNTY SURVEYOR. Engineer/Surveyor Seal and Signature: Michael A. Kenward Date: 6-13-2018

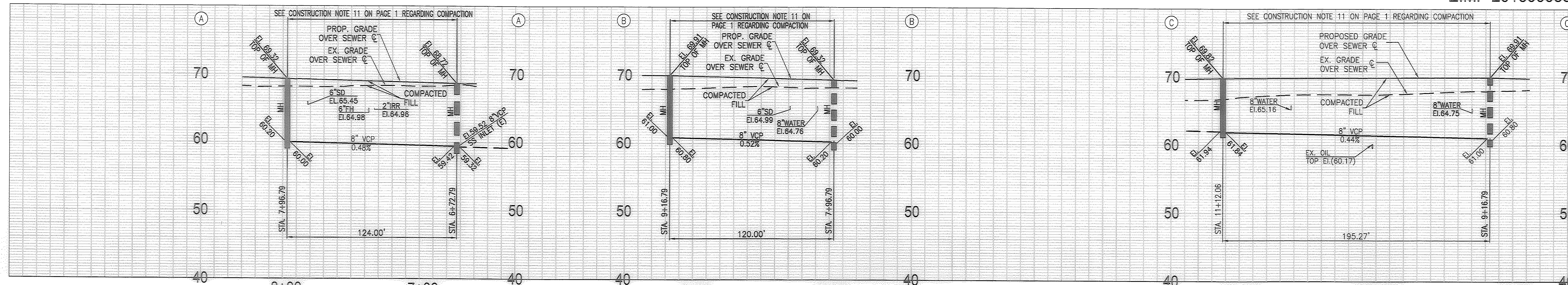
Table with 5 columns: NO., REVISION, REVISED BY, APPROVED BY, DATE. Includes notes about building and safety district office and flow direction.



Sanitary Sewer Plans In Tract No. 73203 PC No. 12258. Includes details for easements (SS1, SS2), manhole details, and a plan view showing the sewer line alignment with stationing and various structures like manholes, valves, and easements. Includes a scale of 1" = 40' and a north arrow.

FORMA ENGINEERING INC. 400 San Fernando Mission Boulevard, Suite 200 San Fernando, California 91340 Phone: (818) 832-1710 Fax: (818) 832-1740 PROJECT ENGINEER: [Signature] R.C.E. 64448 DATE: 6-13-2018

NO LA COUNTY CHARGES FOR CONNECTION SEE COUNTY SANITATION DISTRICTS FOR SPECIAL CONNECTION CHARGES TEL: (602) 968-4288 EX. 2727 SCALE: VERT. 1" = 8' HORIZ. 1" = 40' REGISTERED PROFESSIONAL ENGINEER No. 64448 Exp. 6/30/19 CIVIL STATE OF CALIFORNIA PROJECT ENGINEER DATE: 6-13-2018

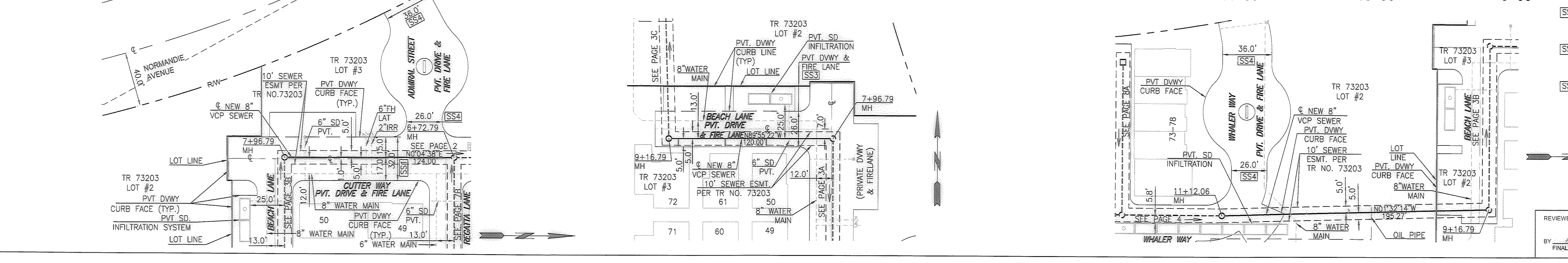
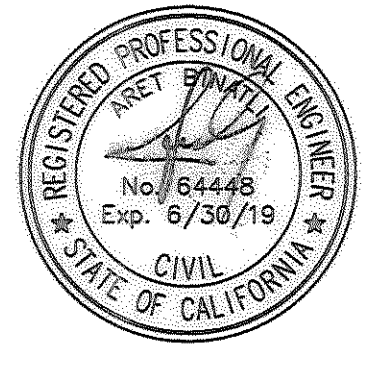


NO LA COUNTY CHARGES FOR CONNECTION

SEE COUNTY SANITATION DISTRICTS FOR SPECIAL CONNECTION CHARGES

TEL (562) 908-4288 EX. 2727

SCALE: VERT. 1" = 8'
HORIZ. 1" = 40'



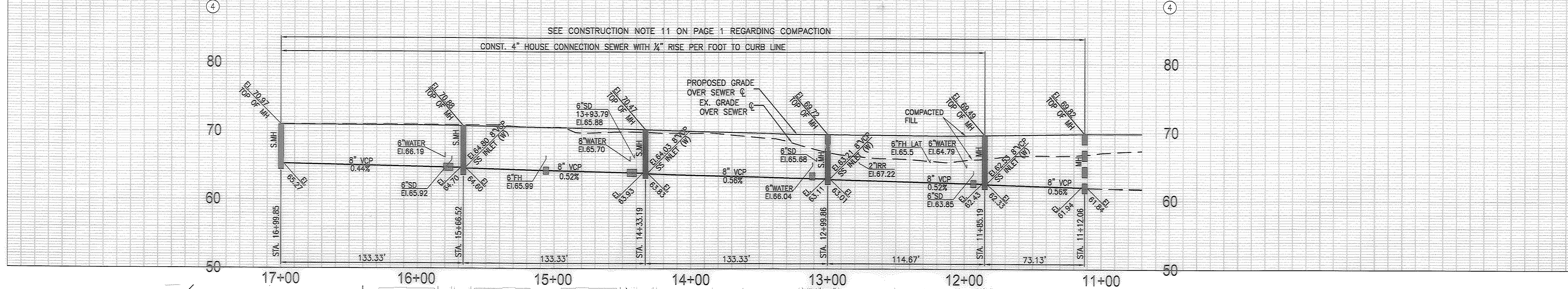
SS1 32' WIDE INGRESS AND EGRESS EASEMENT FOR SANITARY SEWER MAINTENANCE AND OPERATION PURPOSES PER TR 73203

SS3 26' WIDE INGRESS AND EGRESS EASEMENT FOR SANITARY SEWER MAINTENANCE AND OPERATION PURPOSES PER TR 73203

SS4 26' WIDE & VARIABLE WIDTH INGRESS AND EGRESS EASEMENT FOR SANITARY SEWER MAINTENANCE AND OPERATION PURPOSES PER TR 73203

PLAN
SCALE: 1" = 40'

REVIEWED BY LAND DEVELOPMENT DIVISION
BY *Robert Tadele* 06/21/18
FINAL MAPS, SEWER AND LANDSCAPING SUBDIVISION PLAN CHECKING SECTION DATE

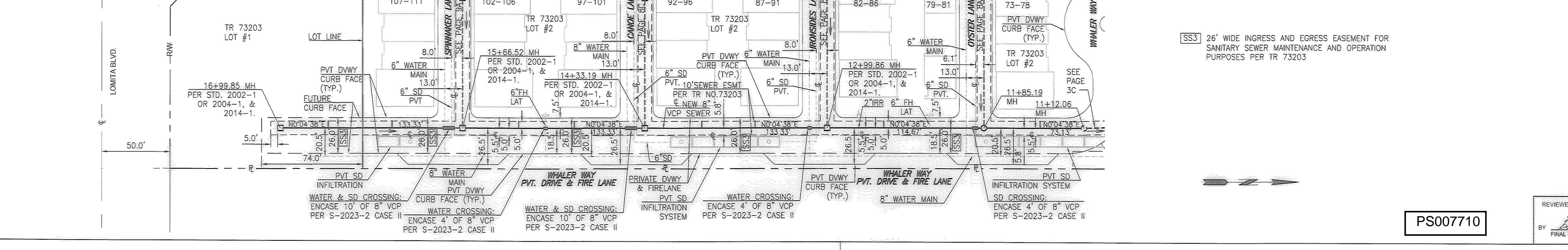
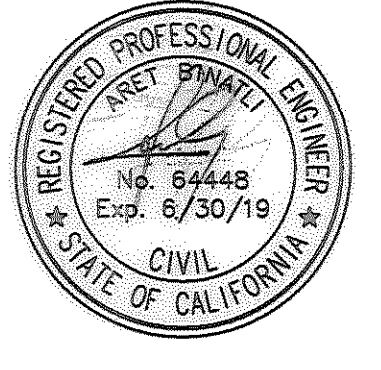


NO LA COUNTY CHARGES FOR CONNECTION

SEE COUNTY SANITATION DISTRICTS FOR SPECIAL CONNECTION CHARGES

TEL (562) 908-4288 EX. 2727

SCALE: VERT. 1" = 8'
HORIZ. 1" = 40'

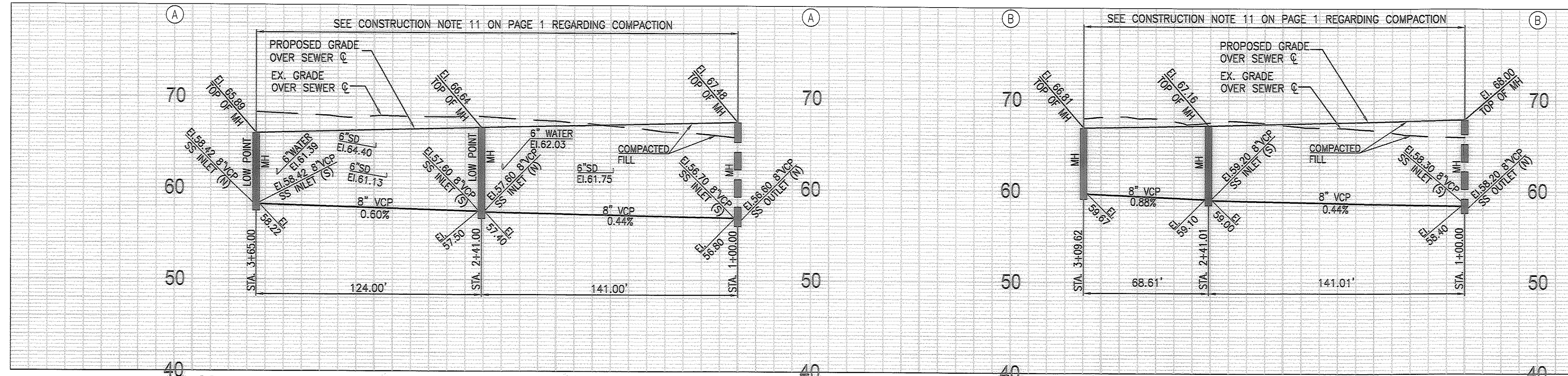


SS3 26' WIDE INGRESS AND EGRESS EASEMENT FOR SANITARY SEWER MAINTENANCE AND OPERATION PURPOSES PER TR 73203

PLAN
SCALE: 1" = 40'

REVIEWED BY LAND DEVELOPMENT DIVISION
BY *Robert Tadele* 06/21/18
FINAL MAPS, SEWER AND LANDSCAPING SUBDIVISION PLAN CHECKING SECTION DATE

PS007710

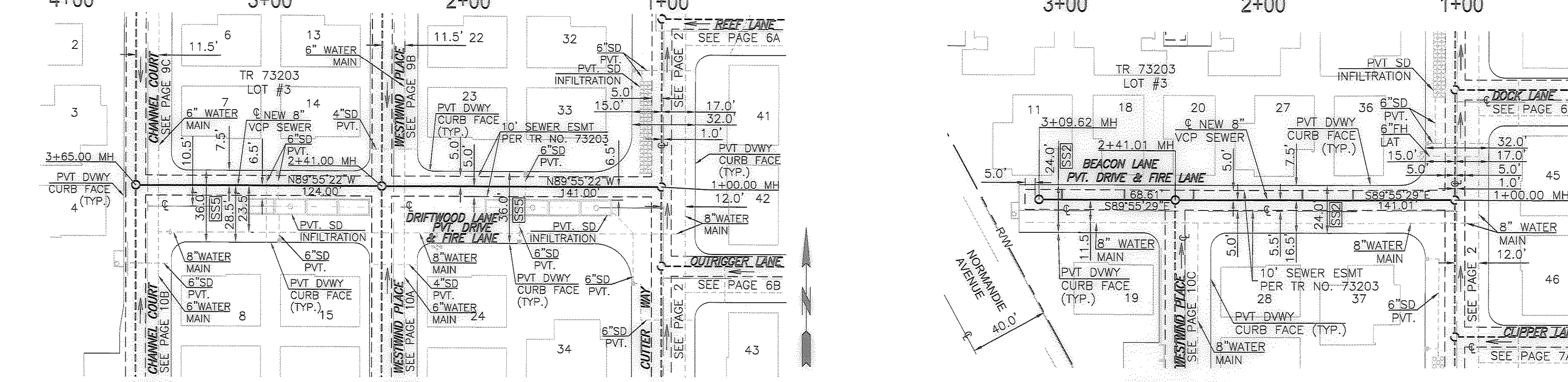


NO LA COUNTY CHARGES FOR CONNECTION

SEE COUNTY SANITATION DISTRICTS FOR SPECIAL CONNECTION CHARGES

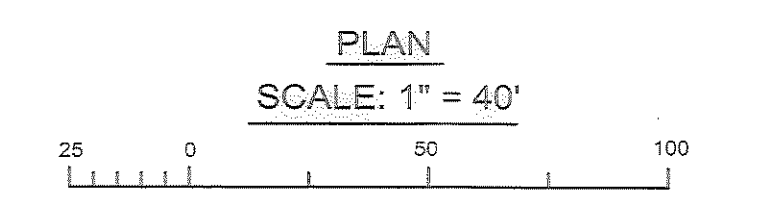
TEL. (952) 906-4268 EX. 2727

SCALE: VERT. 1" = 8'
HORIZ. 1" = 40'



SS2 24' WIDE INGRESS AND EGRESS EASEMENT FOR SANITARY SEWER MAINTENANCE AND OPERATION PURPOSES PER TR 73203

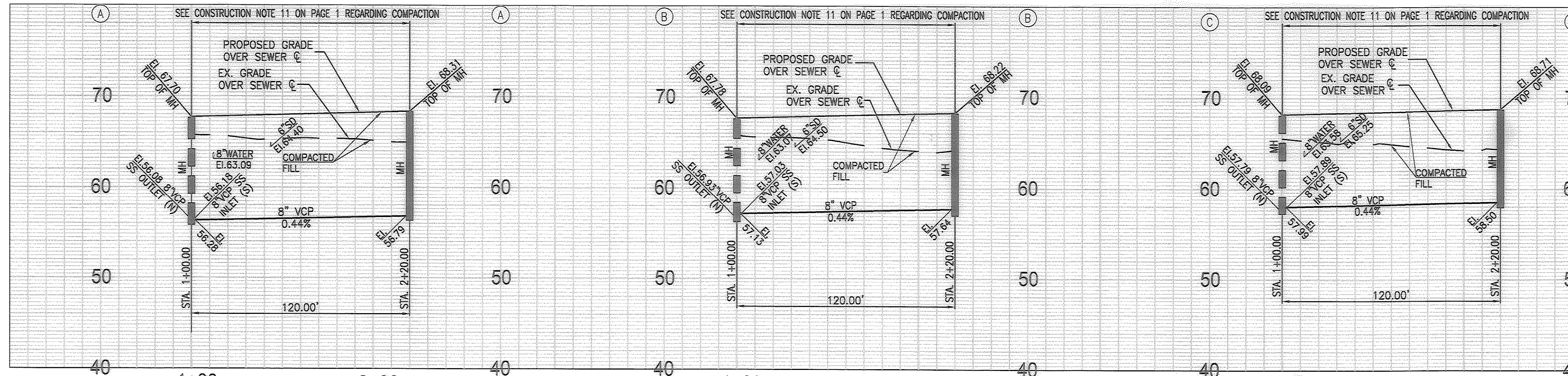
SS5 36' WIDE INGRESS AND EGRESS EASEMENT FOR SANITARY SEWER MAINTENANCE AND OPERATION PURPOSES PER TR 73203



REVIEWED BY LAND DEVELOPMENT DIVISION

By *Brent Tadde* 6/21/18

FINAL MAPS, SEWER AND LANDSCAPING SUBDIVISION PLAN CHECKING SECTION DATE

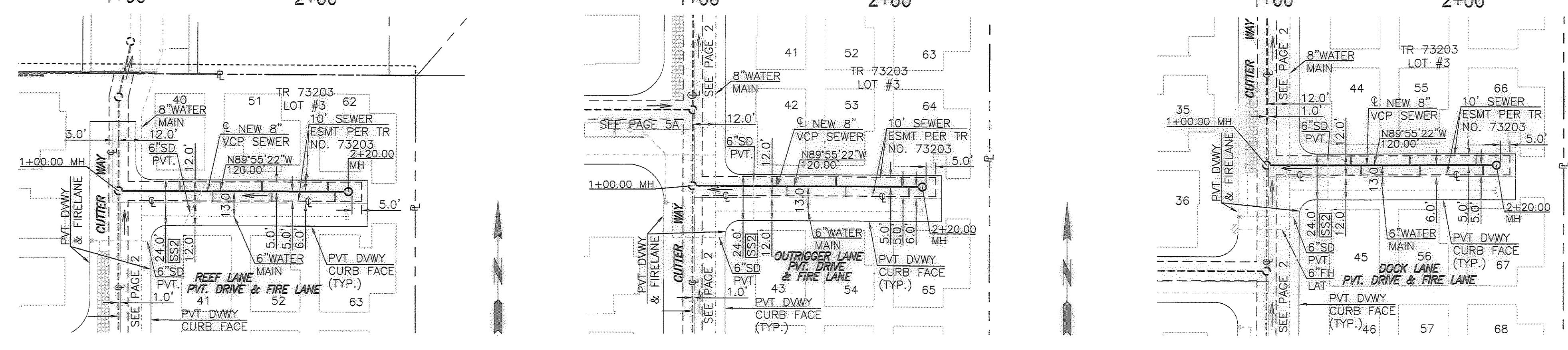


NO LA COUNTY CHARGES FOR CONNECTION

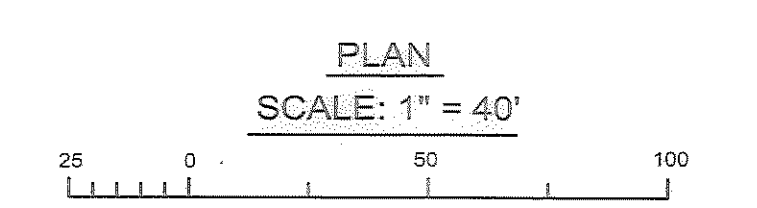
SEE COUNTY SANITATION DISTRICTS FOR SPECIAL CONNECTION CHARGES

TEL. (952) 906-4268 EX. 2727

SCALE: VERT. 1" = 8'
HORIZ. 1" = 40'



SS2 24' WIDE INGRESS AND EGRESS EASEMENT FOR SANITARY SEWER MAINTENANCE AND OPERATION PURPOSES PER TR 73203

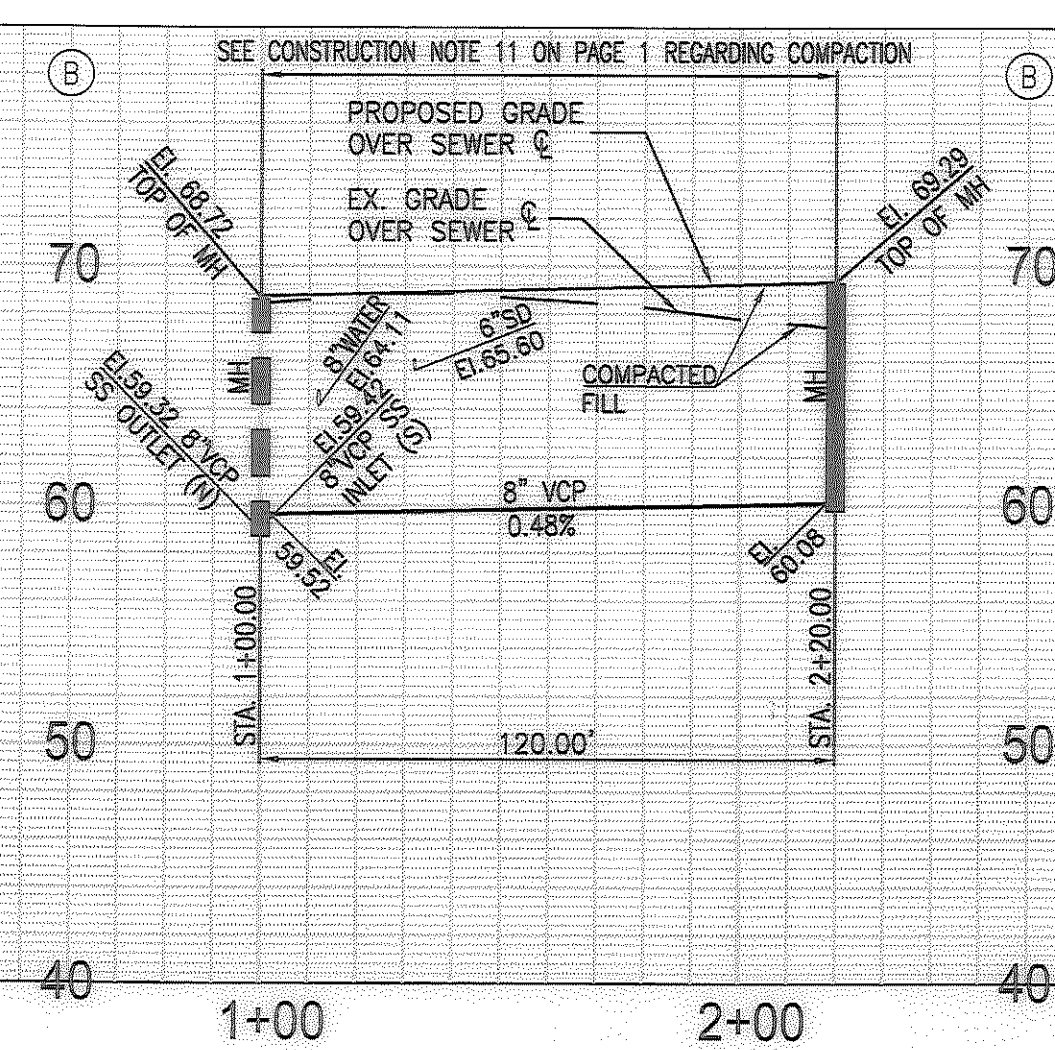
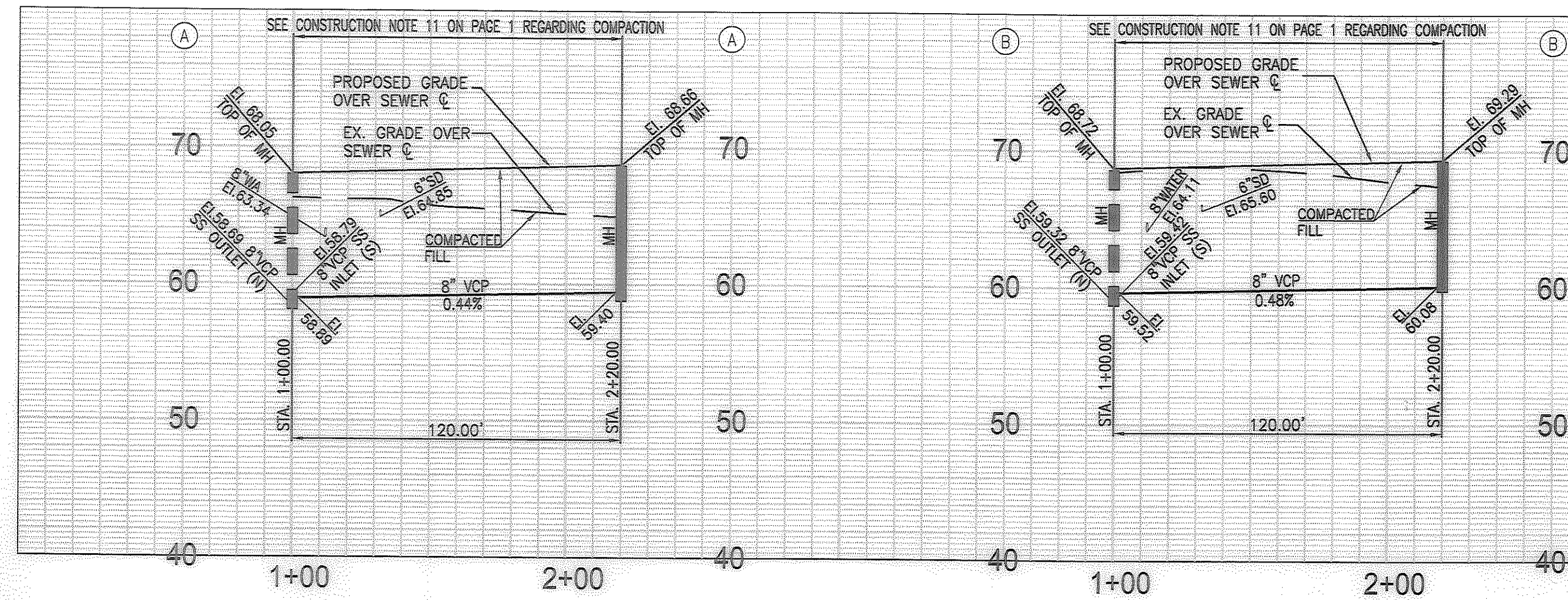


REVIEWED BY LAND DEVELOPMENT DIVISION

By *Brent Tadde* 6/21/18

FINAL MAPS, SEWER AND LANDSCAPING SUBDIVISION PLAN CHECKING SECTION DATE

PS007710

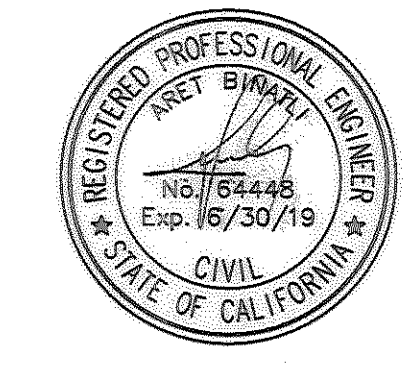


NO LA COUNTY CHARGES FOR CONNECTION

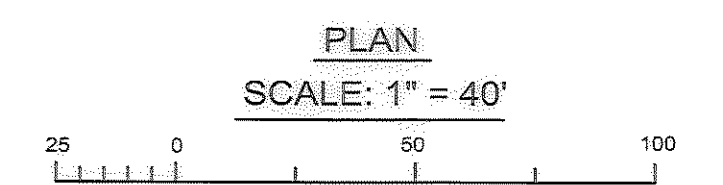
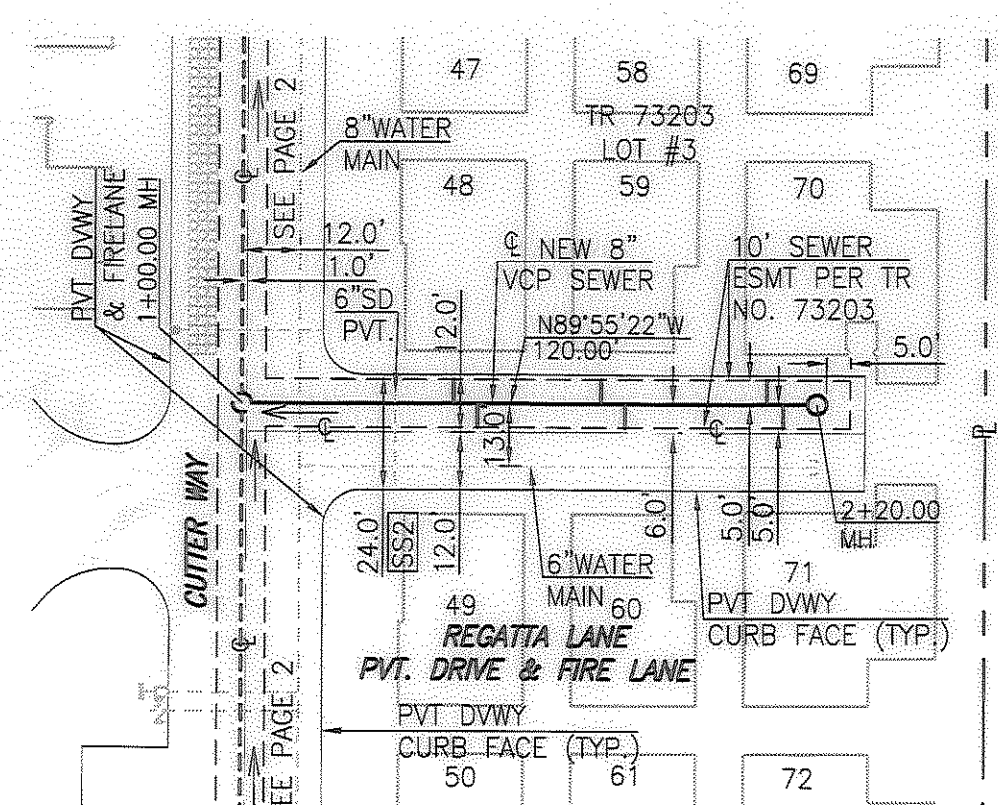
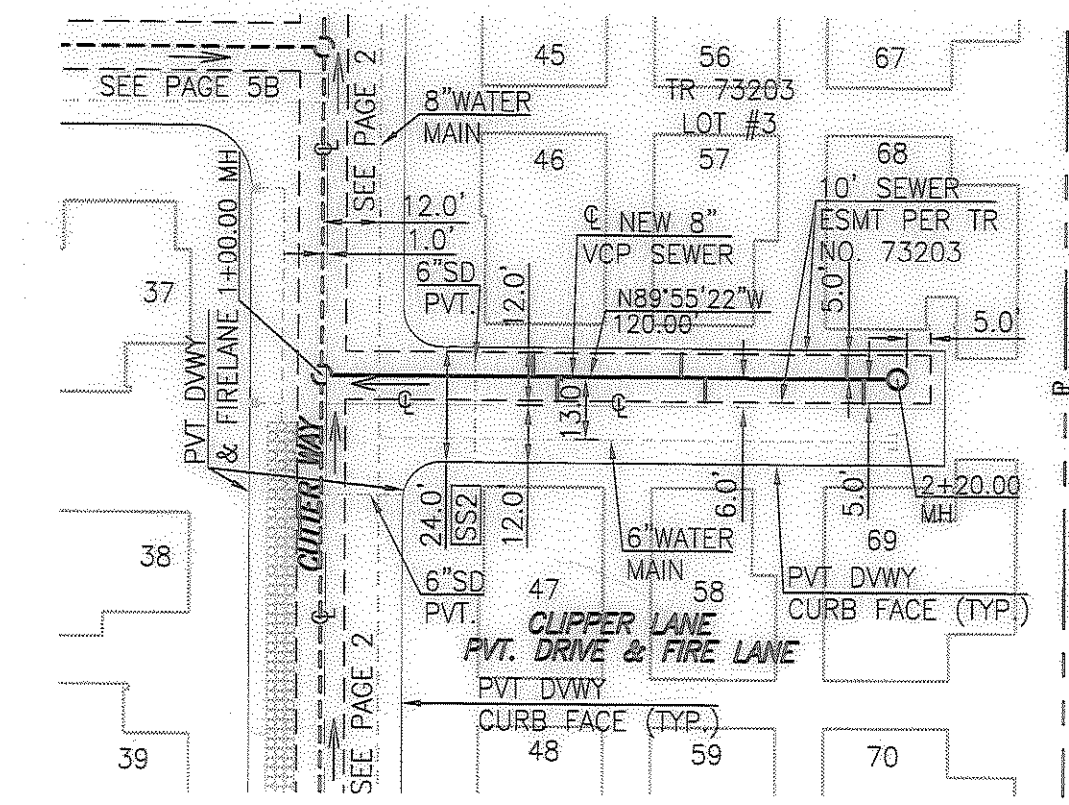
SEE COUNTY SANITATION DISTRICTS FOR SPECIAL CONNECTION CHARGES

TEL: (662) 908-4288 EX. 2727

SCALE: VERT. 1" = 8'
HORIZ. 1" = 40'



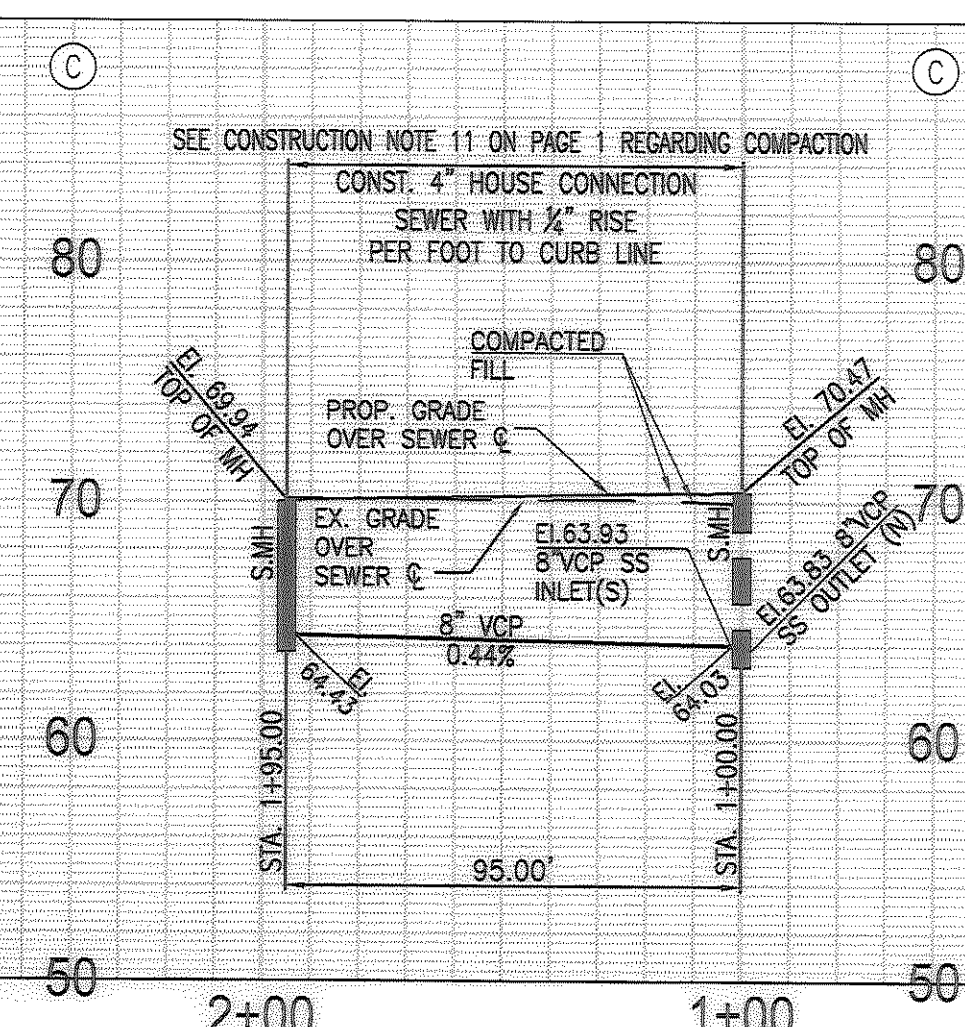
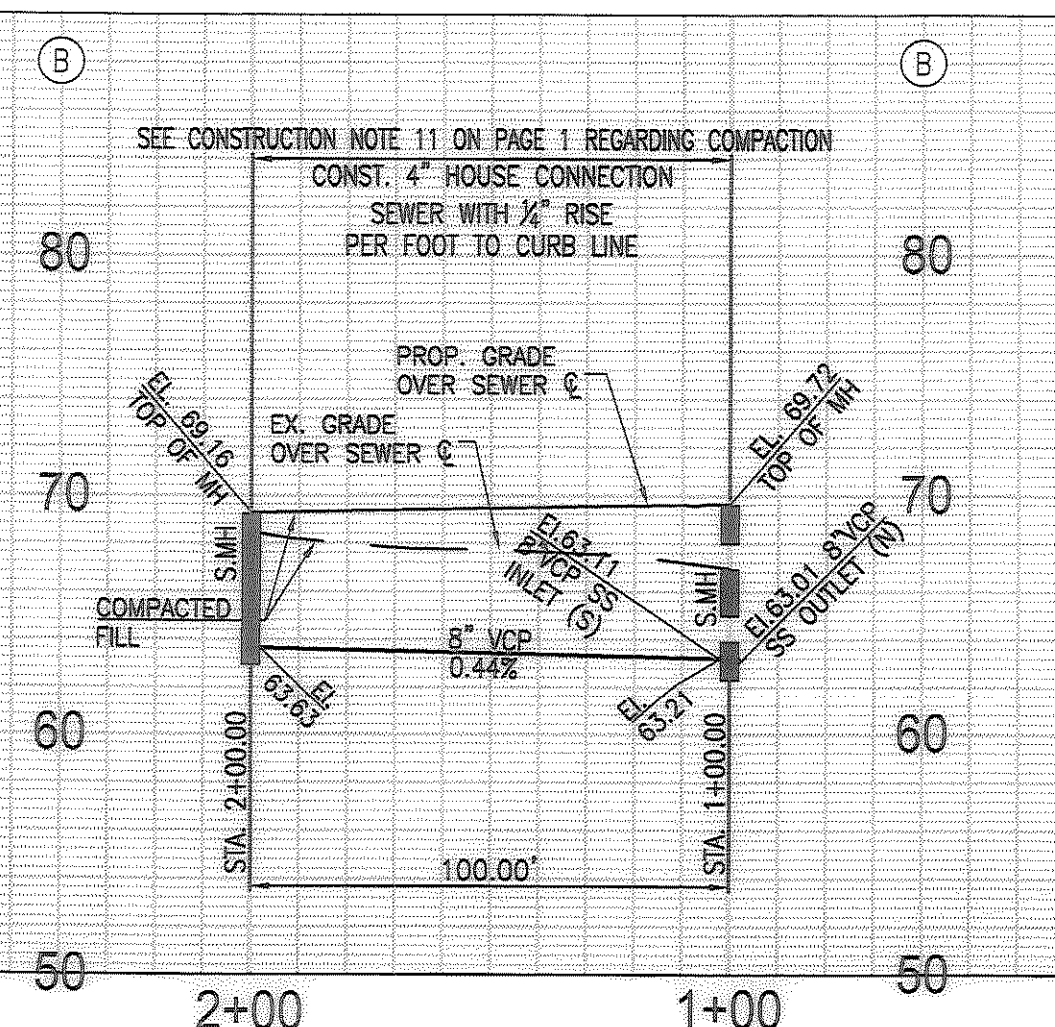
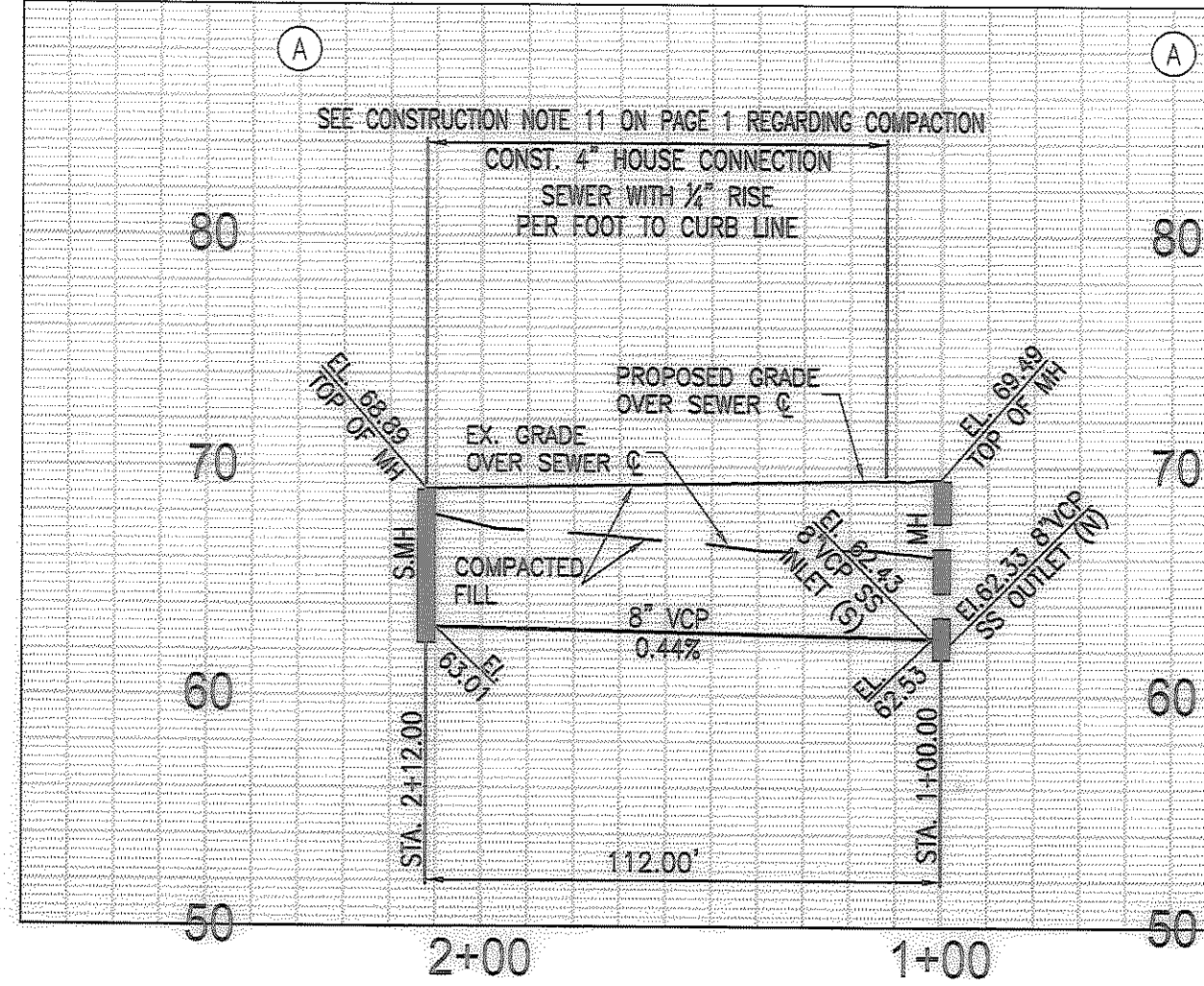
SS2 24' WIDE INGRESS AND EGRESS EASEMENT FOR SANITARY SEWER MAINTENANCE AND OPERATION PURPOSES PER TR 73203



REVIEWED BY LAND DEVELOPMENT DIVISION

BY *Robert Tadala* 6/2/18

FINAL MAPS, SEWER AND LANDSCAPING SUBDIVISION PLAN CHECKING SECTION DATE



NO LA COUNTY CHARGES FOR CONNECTION

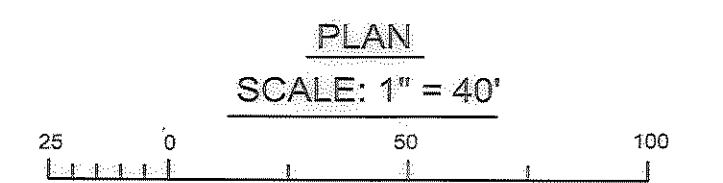
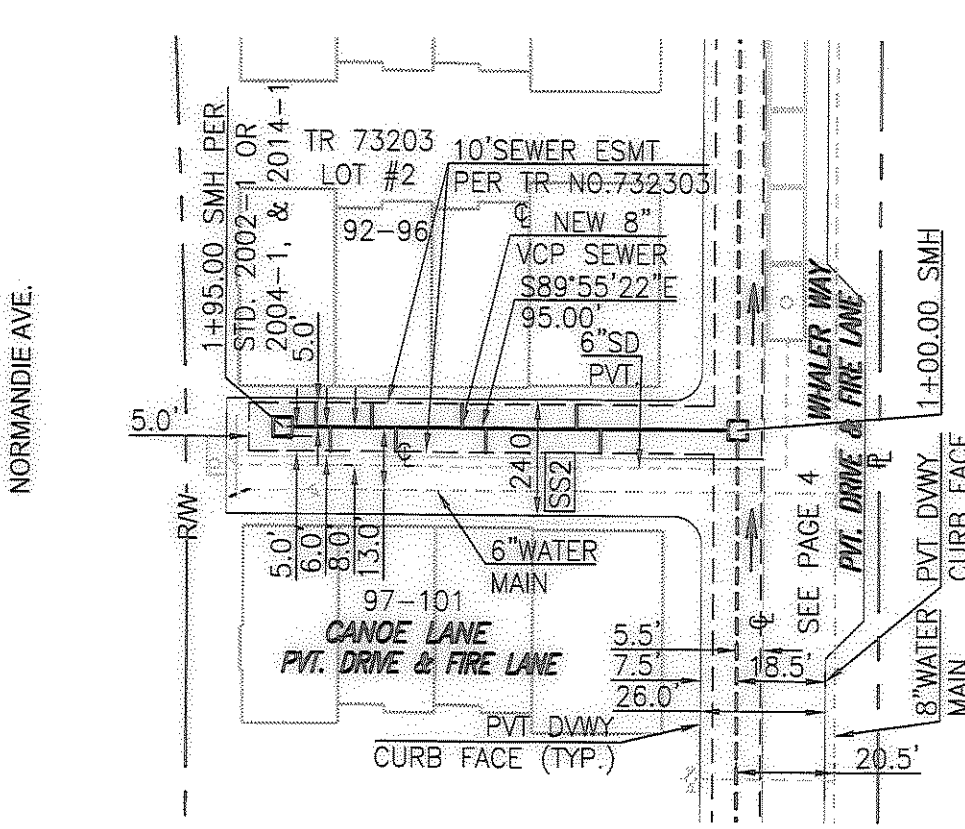
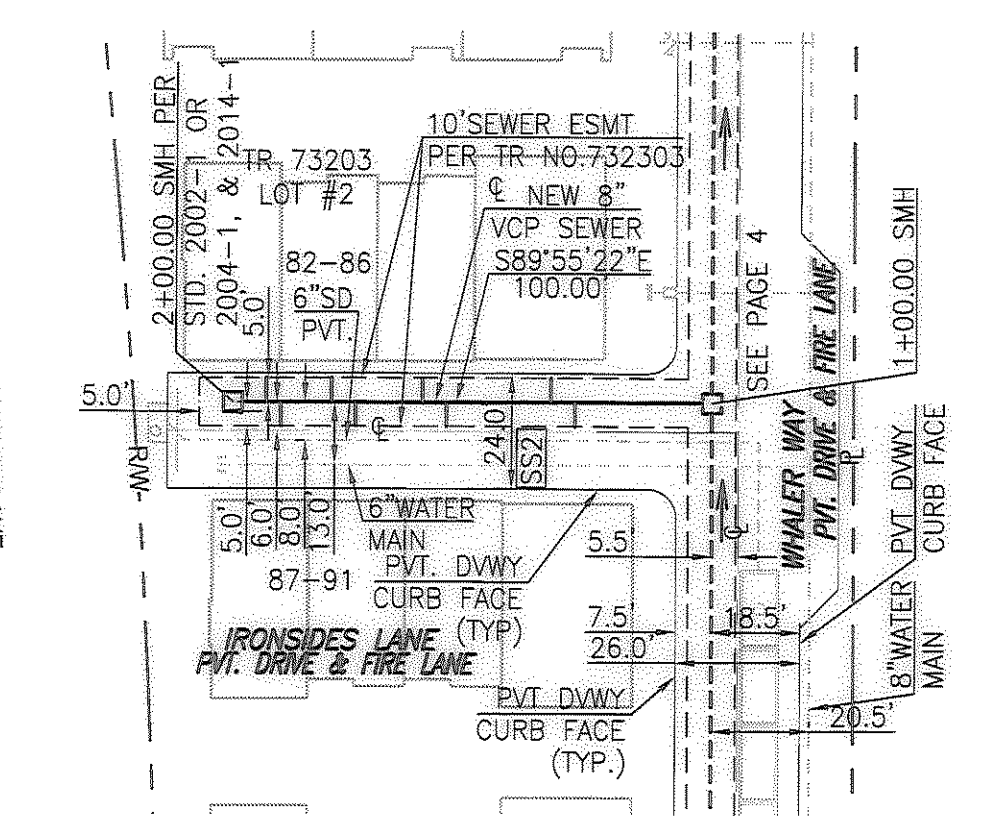
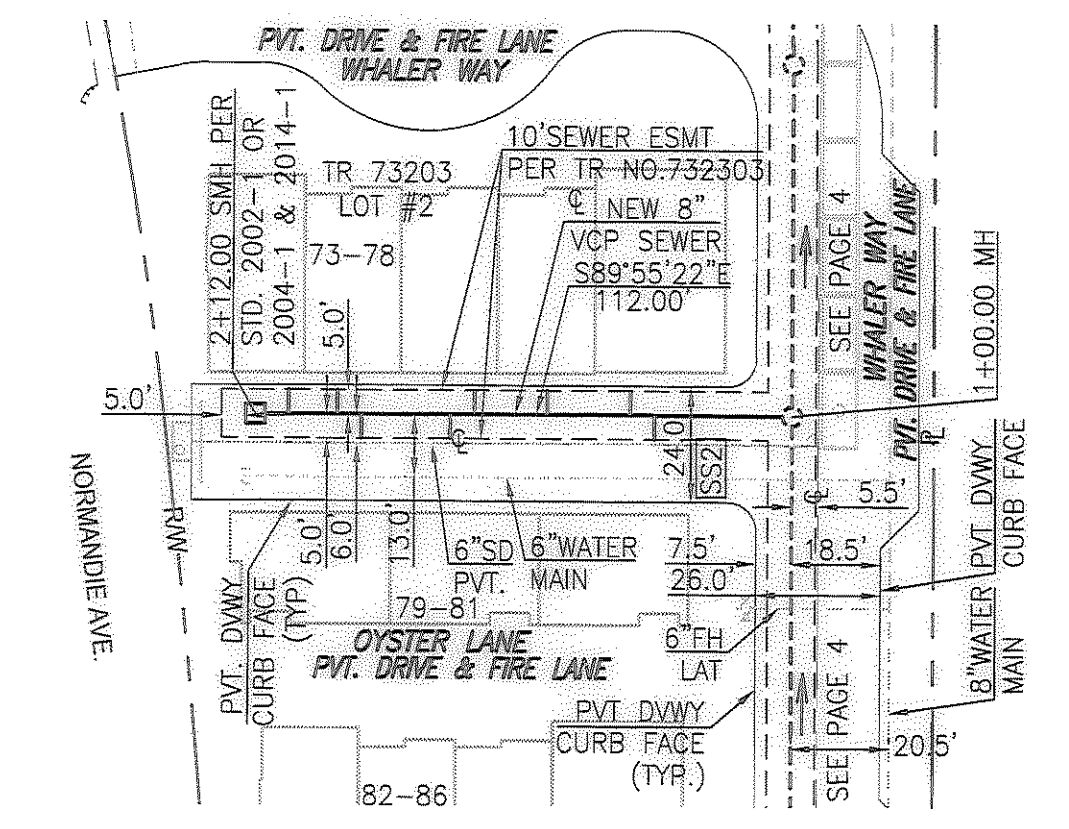
SEE COUNTY SANITATION DISTRICTS FOR SPECIAL CONNECTION CHARGES

TEL: (662) 908-4288 EX. 2727

SCALE: VERT. 1" = 8'
HORIZ. 1" = 40'



SS2 24' WIDE INGRESS AND EGRESS EASEMENT FOR SANITARY SEWER MAINTENANCE AND OPERATION PURPOSES PER TR 73203

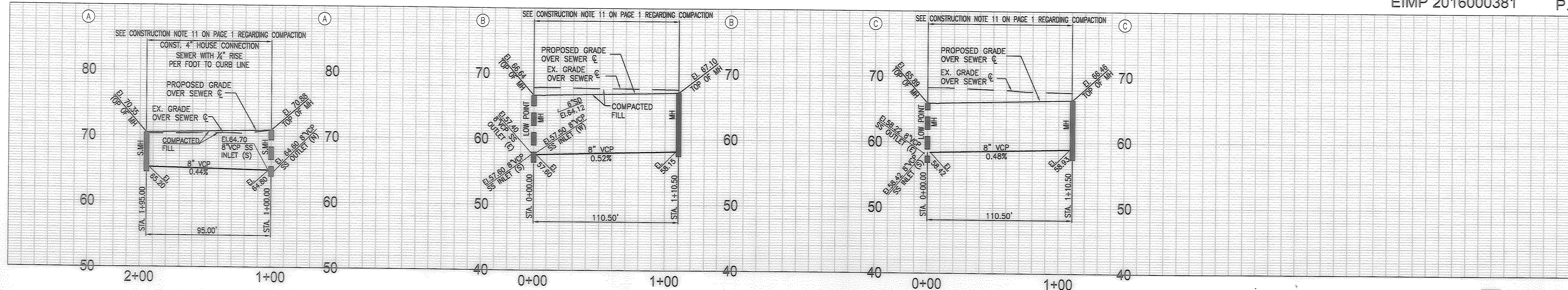


PS007710

REVIEWED BY LAND DEVELOPMENT DIVISION

BY *Robert Tadala* 6/2/18

FINAL MAPS, SEWER AND LANDSCAPING SUBDIVISION PLAN CHECKING SECTION DATE

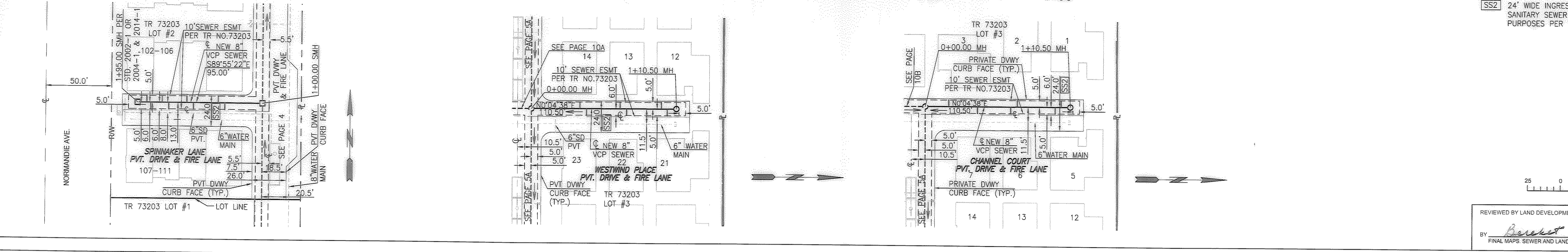


NO LA COUNTY CHARGES FOR CONNECTION

SEE COUNTY SANITATION DISTRICTS FOR SPECIAL CONNECTION CHARGES

TEL: (662) 908-4288 EX. 2727

SCALE: VERT. 1" = 8'
HORIZ. 1" = 40'



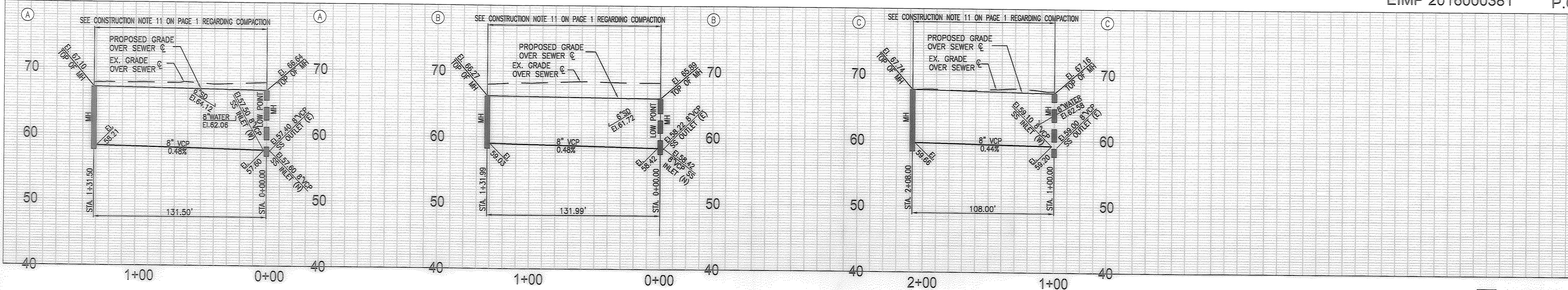
SS2 24' WIDE INGRESS AND EGRESS EASEMENT FOR SANITARY SEWER MAINTENANCE AND OPERATION PURPOSES PER TR 73203

PLAN SCALE: 1" = 40'

REVIEWED BY LAND DEVELOPMENT DIVISION

BY *Brunet Tadele* 6/21/18

FINAL MAPS: SEWER AND LANDSCAPING SUBDIVISION PLAN CHECKING SECTION DATE

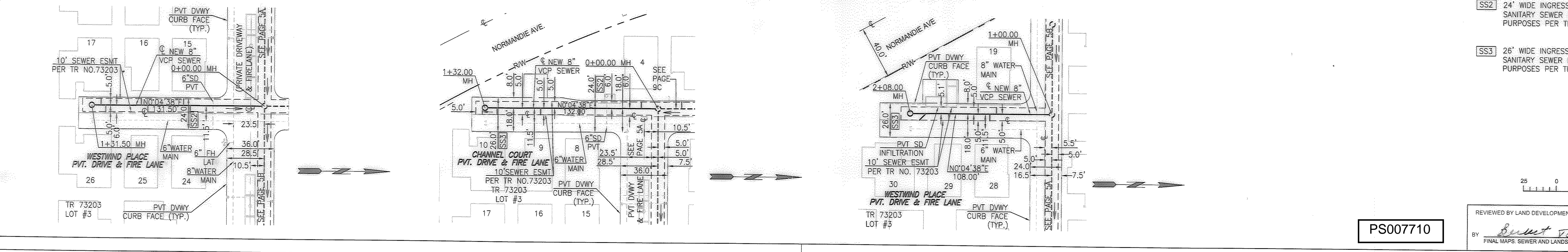


NO LA COUNTY CHARGES FOR CONNECTION

SEE COUNTY SANITATION DISTRICTS FOR SPECIAL CONNECTION CHARGES

TEL: (662) 908-4288 EX. 2727

SCALE: VERT. 1" = 8'
HORIZ. 1" = 40'



SS2 24' WIDE INGRESS AND EGRESS EASEMENT FOR SANITARY SEWER MAINTENANCE AND OPERATION PURPOSES PER TR 73203

SS3 26' WIDE INGRESS AND EGRESS EASEMENT FOR SANITARY SEWER MAINTENANCE AND OPERATION PURPOSES PER TR 73203

PLAN SCALE: 1" = 40'

REVIEWED BY LAND DEVELOPMENT DIVISION

BY *Brunet Tadele* 6/21/18

FINAL MAPS: SEWER AND LANDSCAPING SUBDIVISION PLAN CHECKING SECTION DATE

PS007710