

PROFILE, ALIGNMENT, AND GRADE OF
SANITARY SEWERS
TO BE RECONSTRUCTED IN
TRACT NO. 9301
8300 SANTA FE AVE
ESTU2018000454
PC NO. 12389REF

2 SHEETS: 3 PAGES
COUNTY OF LOS ANGELES CALIFORNIA
CSMD INDEX S-1808/S-1809

MARK PESTRELLA LA COUNTY DIRECTOR OF PUBLIC WORKS
APPROVED BY LAND DEVELOPMENT DIVISION
BY *[Signature]* 10/24/18 DATE
ASSISTANT DIVISION ENGINEER
SUBMITTED BY *[Signature]* 10/24/18 DATE
FINAL MAPS, SEWER AND LANDSCAPING SUBDIVISION PLAN CHECKING SECTION
COUNTY SANITATION DISTRICT NO. 1
OF LOS ANGELES COUNTY, CALIFORNIA
GRACE ROBINSON HYDE - CHIEF ENGINEER AND GENERAL MANAGER
APPROVED BY *[Signature]* DATE: 10/24/18
ENGINEERING COUNTER

PRIVATE ENGINEERS NOTICE TO CONTRACTORS:
THE EXISTENCE AND LOCATION OF ANY UNDERGROUND UTILITY PIPES OR STRUCTURES SHOWN ON THESE PLANS IS REQUIRED BY A SEARCH OF AVAILABLE RECORDS TO THE BEST OF OUR KNOWLEDGE. THERE ARE NO EXISTING UTILITIES EXCEPT AS SHOWN ON THIS MAP. THE CONTRACTOR IS REQUIRED TO TAKE PRECAUTIONARY MEASURES TO PROTECT THE UTILITY LINES SHOWN AND ANY OTHER LINES NOT OF RECORD OR NOT SHOWN ON THIS DRAWING. PRIOR TO EXCAVATION THE CONTRACTOR SHALL CALL TOLL FREE 1-800-422-4133 TO VERIFY THE UNDERGROUND LOCATION OF GAS AND TELEPHONE LINES. THE CONTRACTOR SHALL ALSO CALL MR. RAY CUMMINGS OF GENERAL TELEPHONE COMPANY AT 1-800-546-4871 SO THAT THEY CAN MARK THE LOCATION OF UNDERGROUND TELEPHONE LINES.
[Signature] 80534 9-12-18
PROJECT ENGINEER RCE NO DATE

BASIS OF BEARING
THE BEARINGS SHOWN HEREON ARE BASED UPON THE CENTER LINE OF SANTA FE AVENUE, BEING N0°10'00"W PER TRACT MAP NO. 9301, RECORDED IN BOOK 151, PAGES 99 AND 100, IN THE OFFICE OF THE COUNTY RECORDER OF LOS ANGELES COUNTY.

- RECONSTRUCTION NOTES:
1. Remove existing sewer pipes and install new sewer as noted above.
 2. Break into existing manhole and form new channel in base per SPPWC 208-2.
 3. Maintain sewer flow at all times during construction.
 4. Remodel and reconnect all existing house laterals per LA County standards.

ESTU2018000454 P.C. 12389REF PAGE 2

CONSTRUCTION NOTES:

1. PROTECT IN PLACE EXISTING
2. REMOVE EXISTING 12" CP SEWER LINE
3. CONSTRUCT 15" VCP SEWER LINE, CASE II BEDDING PER LACDPW STD 2021-1
4. RECONSTRUCT 6" HOUSE LATERAL PER SPPWC STD 222-2. LENGTH B=6' MIN.
5. BREAK OUT EXISTING 12" CP ML AND FORM NEW CHANNEL BASE ON THE SEWER MH PER SPPWC 208-2
6. REPLACE ASPHALT CONCRETE PAVEMENT & BASE PER SPPWC STD PLAN 133-3

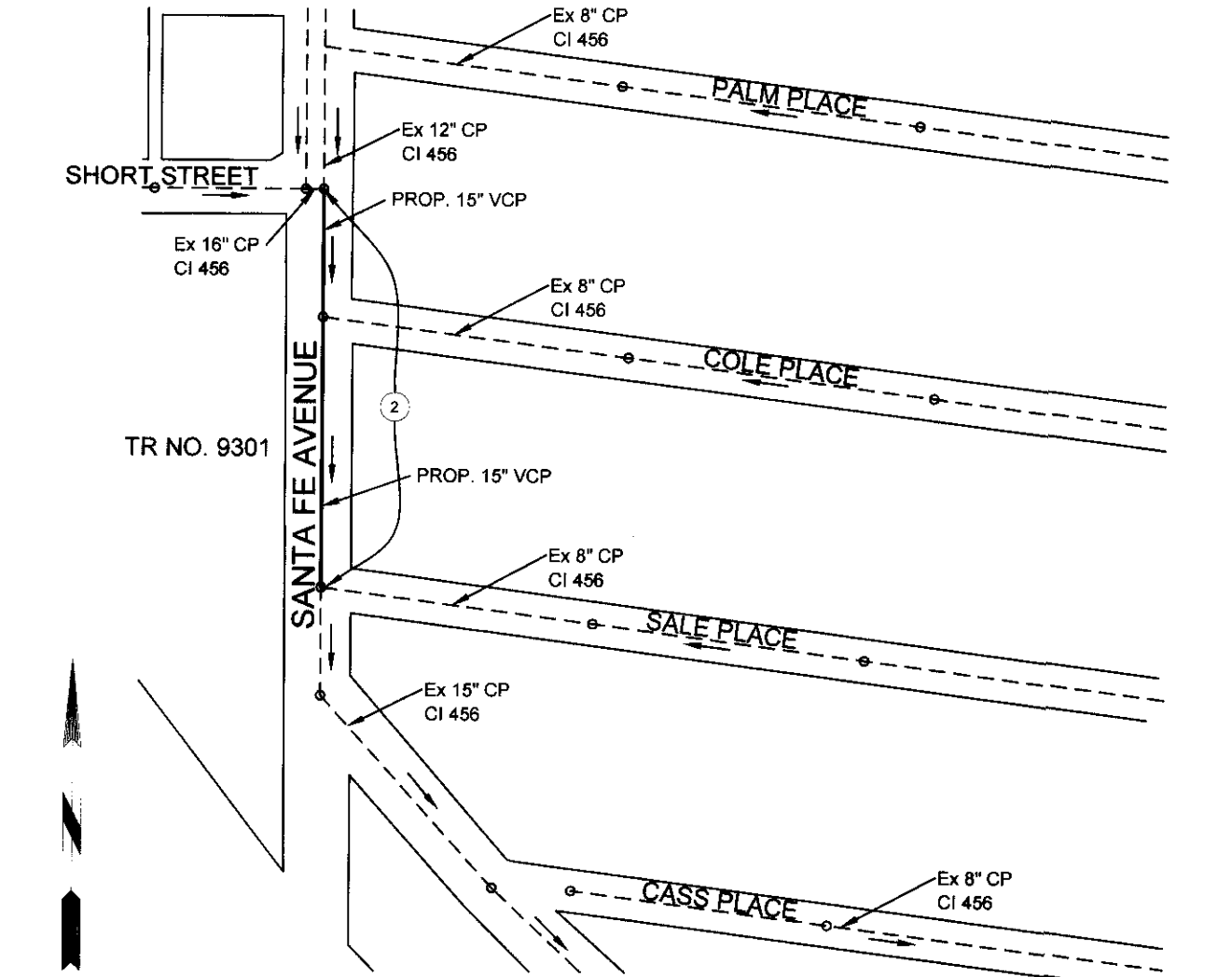
NO LA COUNTY CHARGES FOR CONNECTION
FOR CONNECTION SEE COUNTY SANITATION DISTRICT FOR SPECIAL CONNECTION CHARGES
TEL: (662) 908-4288 EX. 2727
SCALE: VERT. 1" = 8'
HORIZ. 1" = 40'



PROJECT ENGINEER DATE DWG

BRANDOW & JOHNSTON
STRUCTURAL-CIVIL ENGINEERS (B&J H&K, INC.)
700 S FLOWER ST #1800, LOS ANGELES, CA 90017
T: (213) 596-4500 WWW.BUSCE.COM
B&J PROJECT #: C17-0436

BENCH MARKS
ELEVATIONS SHOWN HEREON ARE BASED UPON LOS ANGELES COUNTY BENCH MARK PY10823
ELEVATION 137.02 FEET (NAVD 88) SOUTH GATE QUAD 2005.
DESCRIPTION: DRIVE IN TAG IN E 8800MM (27) NO BCR @ NE COR SANTA ANA ST (TO THE E) & SANTA FE AVE.



BUILDING AND SAFETY DISTRICT OFFICE: SOUTHWEST
NOTES: NUMBER IN CIRCLE INDICATES PAGE NUMBER.
SCALE: 1" = 200' CSMD INDEX S-1808/S-1809
P.C. 12389REF TR. NO. 9301
THOMAS GUIDE PAGE: 704 - H2

NO.	REVISION	REVISED BY	APPROVED BY	DATE

A. NOTES:

1. Every effort should be made to eliminate the discharge of non-stormwater from the project site at all times.
2. Eroded sediments and other pollutants must be retained on-site and may not be transported from the site via street flow, swales, area drains, natural drainage courses or wind.
3. Stockpiles of earth and other construction related materials must be protected from being transported from the site by the forces of wind or water.
4. Fuels, oils, solvents, and other toxic materials must be stored in accordance with their listing and are not to contaminate the soil and surface waters. All approved storage containers are to be protected from the weather. Spills must be cleaned up immediately and disposed of in a proper manner. Spills may not be washed into the drainage system.
5. Erosion or waste concrete may not be washed into the public way or any other drainage system. Provisions shall be made to retain concrete wastes on-site until they can be disposed of as solid waste.
6. Trash and construction related solid wastes must be deposited into a covered receptacle to prevent contamination of rainwater and dispersal by wind.
7. Sediments and other materials may not be tracked from the site by vehicle traffic. The construction entrance roadways must be stabilized so as to inhibit sediments from being deposited into the public way. Accidental depositions must be swept up immediately and may not be washed down by rain or other means.
8. Any slopes with disturbed soils or denuded of vegetation must be stabilized so as to inhibit erosion by wind and water.
9. The following BMPs are outlined in, but not limited to, the latest edition of the California BMP Handbook (Construction) or Caltrans Stormwater Quality Handbook (Construction Site BMP Manual), may apply during the construction of this project (additional measures may be required if deemed appropriate by the Project Engineer or the Building Official).

EROSION CONTROL

- EC1 SCHEDULING
- EC2 PRESERVATION OF EXISTING VEGETATION
- EC3 HYDRAULIC MULCH
- EC4 HYDROSEEDING
- EC5 SOIL BINDERS
- EC6 STRAW MULCH
- EC7 GEOTEXTILES & MATS
- EC8 WOOD MULCHING
- EC9 EARTH Dikes AND DRAINAGE SWALES
- EC10 VELOCITY DISSIPATION DEVICES
- EC11 SLOPE DRAINS
- EC12 STRIPESAWK STABILIZATION
- EC13 RESERVED
- EC14 COMPOST BLANKETS
- EC15 SOIL PREPARATION/ROUGHENING
- EC16 NON-VEGETATED STABILIZATION

WIND EROSION CONTROL

- WE1 WIND EROSION CONTROL

EQUIPMENT TRACKING CONTROL

- TC1 STABILIZED CONSTRUCTION ENTRANCE EXIT
- TC2 STABILIZED CONSTRUCTION ROADWAY
- TC3 ENTRANCE/OUTLET TIRE WASH

NON-STORM WATER MANAGEMENT

- NS1 WATER CONSERVATION PRACTICES
- NS2 DEWATERING OPERATIONS
- NS3 PAVING AND GRADING OPERATIONS
- NS4 TEMPORARY STREAM CROSSING
- NS5 CLEAR WATER DIVERSION
- NS6 LULUIT CONNECTION/DISCHARGE
- NS7 POTABLE WATER/IRRIGATION
- NS8 VEHICLE AND EQUIPMENT CLEANING
- NS9 VEHICLE AND EQUIPMENT FUELING
- NS10 VEHICLE AND EQUIPMENT MAINTENANCE
- NS11 FLE DRIVING OPERATIONS
- NS12 CONCRETE CURING
- NS13 CONCRETE FINISHING
- NS14 MATERIAL AND EQUIPMENT USE
- NS15 DEMOLITION ADJACENT TO WATER
- NS16 TEMPORARY BATCH PLANTS

WASTE MANAGEMENT AND MATERIALS POLLUTION CONTROL

- WM1 MATERIAL DELIVERY AND STORAGE
- WM2 MATERIAL USE
- WM3 STOCKPILE MANAGEMENT
- WM4 SPILL PREVENTION AND CONTROL
- WM5 SOLID WASTE MANAGEMENT
- WM6 HAZARDOUS WASTE MANAGEMENT
- WM7 CONTAMINATION RISK MANAGEMENT
- WM8 CONCRETE WASTE MANAGEMENT
- WM9 SANITARY/SEPTIC WASTE MANAGEMENT
- WM10 LIQUID WASTE MANAGEMENT

TEMPORARY SEDIMENT CONTROL

- SE1 SILT FENCE
- SE2 SEDIMENT BASIN
- SE3 SEDIMENT TRAP
- SE4 CHECK DAM
- SE5 FIBER ROLLS
- SE6 GRAVEL BAG BERM
- SE7 STREET SWEEPING AND VACUUMING
- SE8 SANDING BARRIER
- SE9 STRAW BALE BARRIER
- SE10 STORM DRAIN INLET PROTECTION
- SE11 ACTIVE TREATMENT SYSTEMS
- SE12 TEMPORARY SILT DIKE
- SE13 COMPOST SOCKS & BERMS
- SE14 BIOFILTER BAGS

NOTICE TO CONTRACTOR

The developer shall be responsible for the continued maintenance of PC12389 sanitary sewer until the County formally accepts it for maintenance. All mainline, manholes and laterals shall be protected from damage and infiltration.

MAINTAIN SEWER FLOW AT ALL TIMES DURING CONSTRUCTION

SEWER VIDEO OF ALL SEGMENTS SHALL BE SUBMITTED PRIOR TO PARTIAL FIELD ACCEPTANCE (95%) AND COMPLETED FIELD ACCEPTANCE (98%). FINAL MAP AND AS-BUILT SEWER PLANS SHALL BE SUBMITTED PRIOR TO PARTIAL FIELD ACCEPTANCE.

EXISTING SEWER SYSTEM SHALL BE OPERATIONAL AT ALL TIMES DURING CONSTRUCTION/RECONSTRUCTION. NOTIFY AFFECTED HOMEOWNERS AT LEAST 72 HRS IN ADVANCE.

B. STANDARD PLANS:

The following latest revised standard plans on file in the office of the following department shall apply in the construction of this project.

LOS ANGELES COUNTY DEPARTMENT OF PUBLIC WORKS

2000-0	Legend for sanitary sewer plans and profiles and detail maps.	2021-1	Bedding for sewer pipe.
2002-1	Precast concrete shallow manhole.	2023-2	Crafting and encasement.
2003-2	Reinforced precast concrete manhole.	2024-1	WYE or TEE support.
2004-1	Rectangular shallow manhole.	2026-1	Erosion protection in steep slopes.
2014-1	Rectangular manhole frame and cover.	2028-2	Allowable trench widths.
2015-1	Standard manhole step.	2100-1	Minimum public safety requirements.

LOS ANGELES COUNTY DEPARTMENT OF PUBLIC WORKS

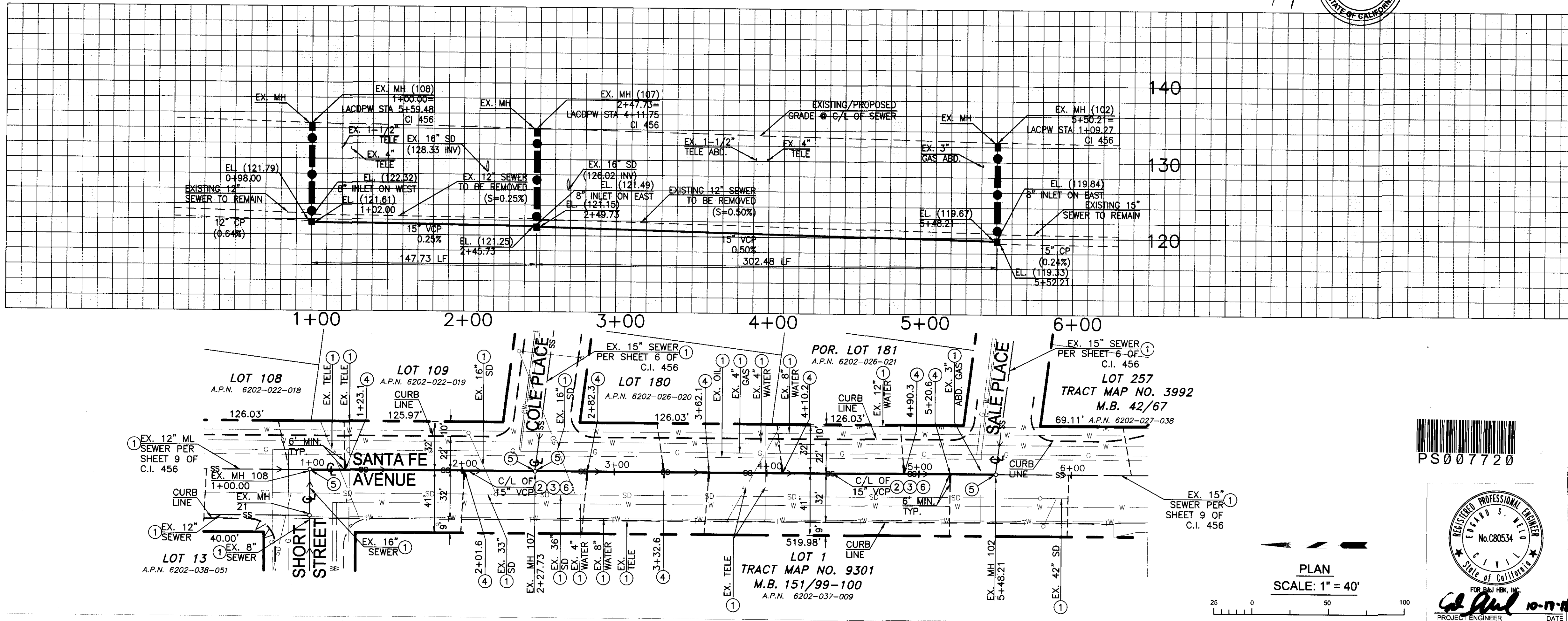
200-3	Precast Concrete Sewer Manhole	220-3	Chimneys
204-2	Terminal cleanout structure	221-2	Pipe anchors and backfill stabilizers
207-2	Precast reinforced concrete manhole base	222-2	House connection sewer
208-2	Breaking into existing manholes	223-2	House connection remodeling
210-3	Manhole frame and cover locking type	225-2	Blanket protection for pipes

COUNTY SANITATION DISTRICTS (CSD) NOTES:

1. No connection for the disposal of industrial wastes shall be made to sewers shown on these drawings until a permit for industrial waste water discharge has been issued by CSD for said connection.
2. Prior to final acceptance of the project, notify the CSD superintendent of maintenance at (310) 638-1161 to report completion of this local sewer that indirectly discharges into CSD sewer system. (For projects in the L.A. Basin)

NOTES:

Any damage to the sewer line shall be the responsibility of the contractor/owner. All grading and construction occurring over and the vicinity of the existing sewer shall be performed in the presence of a County inspector. Where applicable, the sewers shall be protected per Std. Plan 202-2 at all significant crossings.



NO. REVISION REVISED BY APPROVED BY DATE

TRACT NO. 9301 PC NO. 12389REF

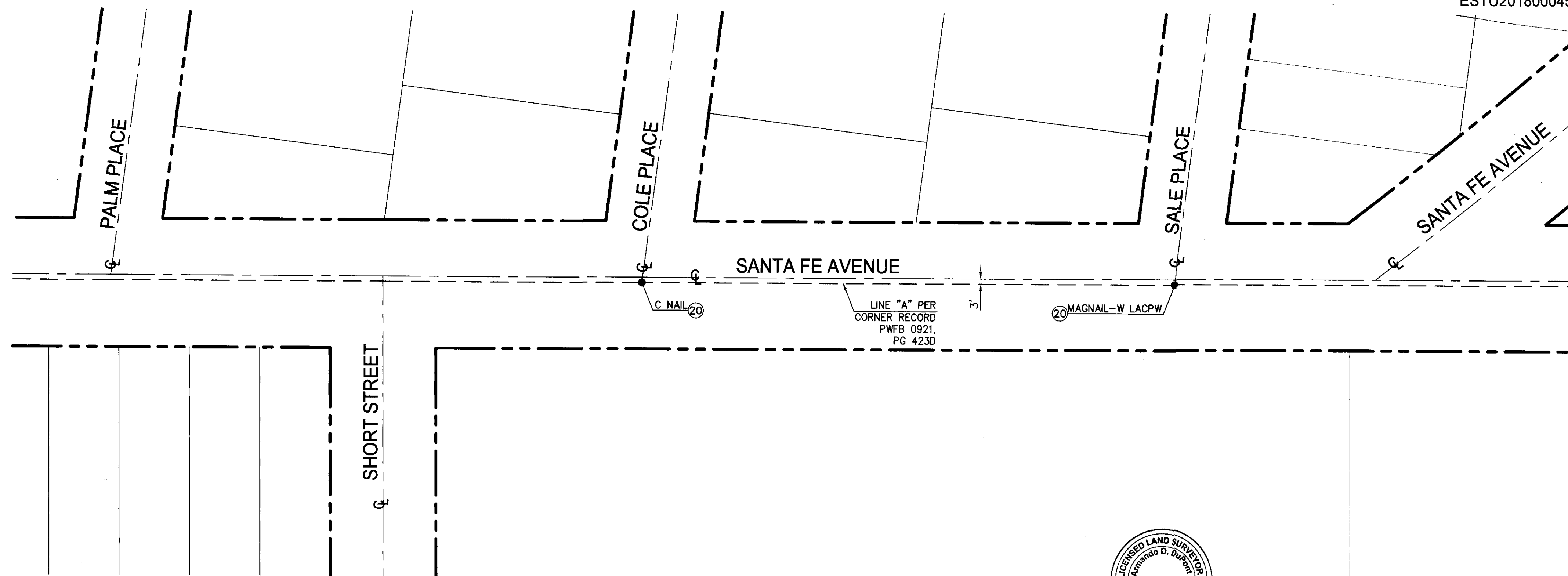
REVIEWED BY LAND DEVELOPMENT DIVISION
BY *[Signature]* 10/23/18 DATE
FINAL MAPS, SEWER AND LANDSCAPING SUBDIVISION PLAN CHECKING SECTION
COUNTY OF LOS ANGELES DEPARTMENT OF PUBLIC WORKS

EST. 1945

ABBREVIATIONS

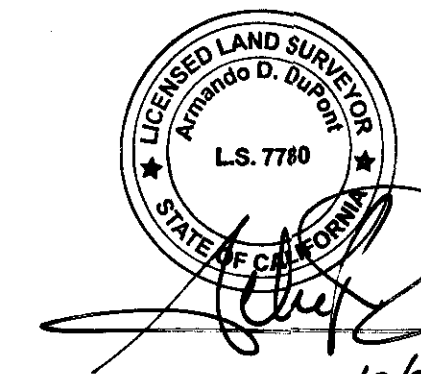
(IN ADDITION TO GREENBOOK SECTION 1 STANDARD 100-2)

ABAND	ABANDONED
BLDG	BUILDING
BOT	BOTTOM OF PIPE OR ENCASEMENT
CML&C	CEMENT-MORTAR LINED & COATED
CIP	CAST IN PLACE
CSD	COUNTY SANITATION DISTRICT
CL	CENTERLINE
CATV	CABLE TELEVISION
DW	DOMESTIC WATER
ELEC	ELECTRICAL
EX	EXISTING
FF	FINISH FLOOR
FW	FIRE WATER
G	GAS
GFF	GARAGE FINISH FLOOR
HL	HOUSE LATERAL
INV	INVERT
IW	IRRIGATION WATER
L	LENGTH
LACDPW	LOS ANGELES COUNTY DEPARTMENT OF PUBLIC WORKS
LF	LINEAR FEET
MAX	MAXIMUM
MIN	MINIMUM
NAP	NOT A PART
NTS	NOT TO SCALE
P/L	PROPERTY LINE
POC	POINT OF CONNECTION
PROP	PROPOSED
S	SLOPE
SPPWC	STANDARD PLANS FOR PUBLIC WORKS CONSTRUCTION
STA	STATION
STD	STANDARD
SSMH	SEWER MANHOLE
SS	SANITARY SEWER
TELE COMM	TELEPHONE COMMUNICATION
TOP	TOP OF PIPE
VCP	VITRIFIED CLAY PIPE



MONUMENT SURVEY

SCALE 1" = 40'



10/22/18

REVIEWED BY LAND DEVELOPMENT DIVISION

BY [Signature] DATE 10/23/18
FINAL MAPS, SEWER AND LANDSCAPING SUBDIVISION PLAN CHECKING SECTION

ESTU2018000454 P.C. 12389REF PAGE 3

NO LA COUNTY CHARGES FOR CONNECTION
FOR CONNECTION SEE COUNTY SANITATION DISTRICT FOR SPECIAL CONNECTION CHARGES
TEL. (862) 908-4288 EX. 2727

CONSTRUCTION NOTES:

20 PROTECT EXISTING MONUMENT IN PLACE

PS007720