

AS PART OF IMPROVEMENT FOR PM NO. 073998 CURRIER ROAD W/O BREA CANYON ROAD, PC NO. 12393 1 SHEET: 2 PAGES COUNTY OF LOS ANGELES CALIFORNIA CSDM INDEX E-2347

MARK PESTRALLA LA COUNTY DIRECTOR OF PUBLIC WORKS APPROVED BY LAND DEVELOPMENT DIVISION DATE 3/19/18 BY [Signature] ASSISTANT DIVISION ENGINEER DATE 3/19/18 SUBMITTED BY [Signature] DATE 3/19/18 BY [Signature] FINAL MAPS, SEWER AND LANDSCAPING SUBDIVISION PLAN CHECKING SECTION DATE

CITY OF INDUSTRY APPROVAL PARCEL MAP NO. 073998 PC NO. 12393 CITY OF INDUSTRY DISCHARGE OUTLET APPROVE THIS SEWER AREA STUDY/PLAN AND CONCUR WITH THE FOLLOWING FINDINGS WITHIN THE CITY WITH MITIGATION WITH MITIGATION APPROVED BY [Signature] DATE 3/22/2018 CITY ENGINEER RCE 66959 RCE DATE

COUNTY SANITATION DISTRICT NO. 21 OF LOS ANGELES COUNTY, CALIFORNIA GRACE ROBINSON HYDE - CHIEF ENGINEER AND GENERAL MANAGER APPROVED BY [Signature] DATE 3/22/18 OFFICE ENGINEERING COUNCIL

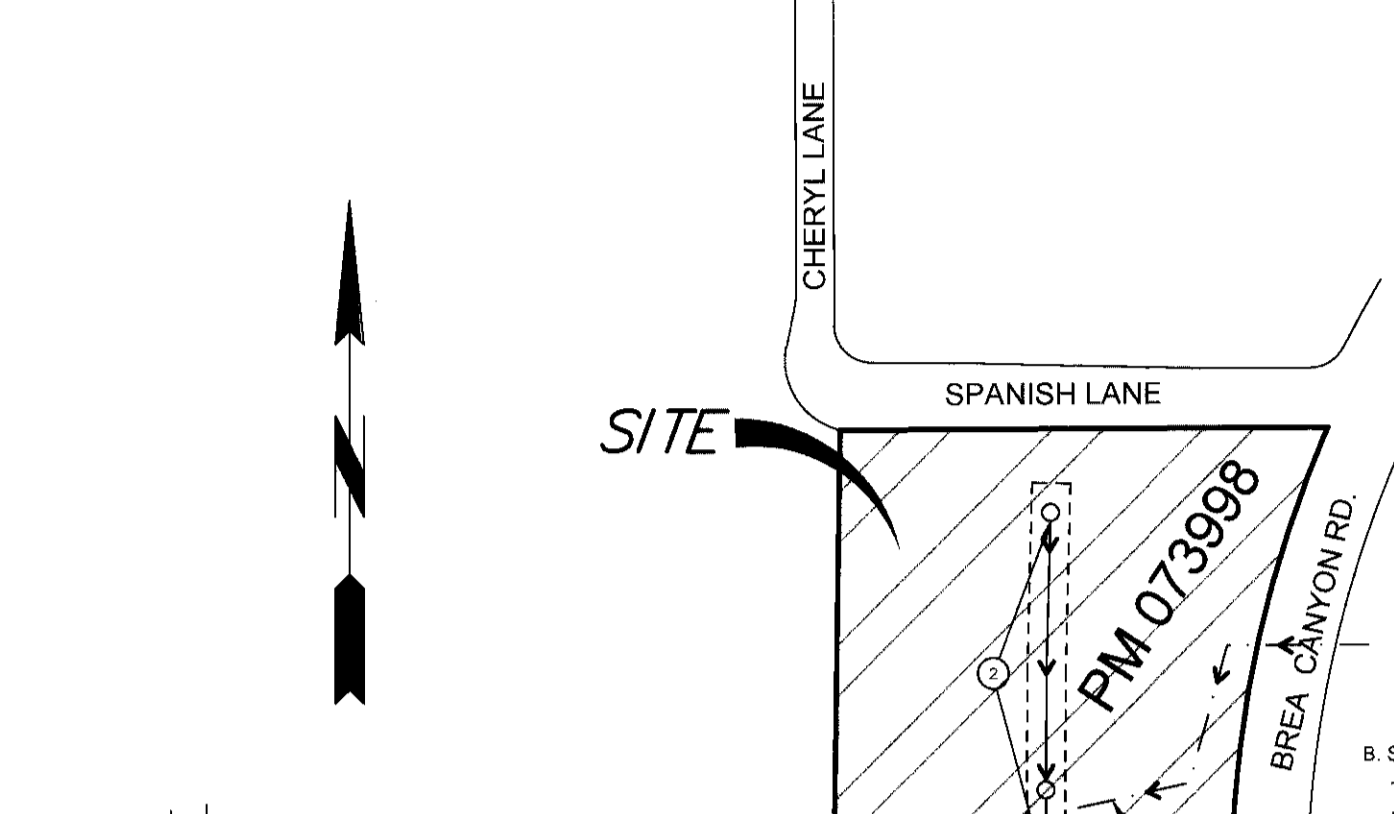


PLAN PREPARED IN THE OFFICE OF LAND DEVELOPMENT DESIGN COMPANY 2313 E. PHILADELPHIA STREET, UNIT F, ONTARIO, CA 91761 KEVIN J. RICHER RCE NO. 43714 Exp. 03/31/2019 DATE 3/14/18

PRIVATE ENGINEERS NOTICE TO CONTRACTORS: THE EXISTENCE AND LOCATION OF ANY UNDERGROUND UTILITY PIPES OR STRUCTURES SHOWN ON THESE PLANS IS REQUIRED BY A SEARCH OF AVAILABLE RECORDS TO THE BEST OF OUR KNOWLEDGE. THERE ARE NO EXISTING UTILITIES EXCEPT AS SHOWN ON THIS MAP. THE CONTRACTOR IS REQUIRED TO TAKE PRECAUTIONARY MEASURES TO PROTECT THE UTILITIES SHOWN AND ANY OTHER LINES NOT OF RECORD OR NOT SHOWN ON THIS DRAWING. PRIOR TO EXCAVATION THE CONTRACTOR SHALL CALL TOLL FREE 1-800-422-4133 TO VERIFY THE UNDERGROUND LOCATION OF GAS AND TELEPHONE LINES. THE CONTRACTOR SHALL ALSO CALL MR. RAY CLUMMINGS OF GENERAL TELEPHONE COMPANY AT 1-805-648-4871 SO THAT THEY CAN MARK THE LOCATION OF UNDERGROUND TELEPHONE LINES. KEVIN J. RICHER RCE NO. 43714 DATE 3/14/18

BENCH MARKS BM: G 2684 Elev. 579.159 FEET 2005 (NAV88) DRDBM TAG IN CONC FTG OF 125MM(5IN) IP GUARD POST FOR 600MM(2FT) WATER LINE 49M(161FT) E/O C/L BREA CYN RD & 36M(118FT) S/O C/L VALLEY BLVD.

- STORMWATER POLLUTION PLAN NOTES A. NOTES: 1. Every effort should be made to eliminate the discharge of non-stormwater from the project site at all times. 2. Eroded sediments and other pollutants must be retained on-site and may not be transported from the site via sheet flow, swales, area drains, natural drainage courses or wind. 3. Stockpiles of earth and other construction related materials must be protected from being transported from the site by the forces of wind or water. 4. Fuels, oils, solvents and other toxic materials must be stored in accordance with their labeling and are not to contaminate the soil and surface waters. All approved storage containers are to be protected from the weather. Spills must be cleaned up immediately and disposed of in a proper manner. Spills may not be washed into the drainage system. 5. Excess or waste concrete may not be washed into the public way or any other drainage system. Provisions shall be made to retain concrete wastes on-site until they can be disposed of as solid waste. 6. Trash and construction related solid wastes must be deposited into a covered receptacle to prevent contamination of rainwater and dispersal by wind. 7. Sediments and other materials may not be tracked from the site by vehicle traffic. The construction entrance roadways must be stabilized so as to inhibit sediments from being deposited into the public way. Accidental discharges must be swept up immediately and may not be washed down by rain or other means. 8. Any slopes with disturbed soils or denuded of vegetation must be stabilized so as to inhibit erosion by wind and water. 9. The following BMPs as outlined in, but not limited to, the latest edition of the California BMP Handbook (Construction) or Caltrans Stormwater Quality Handbooks (Construction Site BMP Manual), may apply during the construction of this project (additional measures may be required if deemed appropriate by the Project Engineer or the Building Official).



- EROSION CONTROL EC1 SCHEDULING EC2 PRESERVATION OF EXISTING VEGETATION EC3 HYDRAULIC MULCH EC4 HYDROSEEDING EC5 SOIL BARRIERS EC6 STRAW MULCH EC7 GEOTEXTILES & MATS EC8 WOOD MULCHING EC9 EARTH COVERS AND DRAINAGE SWALES EC10 VELOCITY DISSIPATION DEVICES EC11 SLOPE DRAINS EC12 STREAMBANK STABILIZATION EC13 RESERVED EC14 COMPOST BLANKETS EC15 SOIL PREPARATION/ROUGHENING EC16 NON-VEGETATED STABILIZATION
- NON-STORM WATER MANAGEMENT NS1 WATER CONSERVATION PRACTICES NS2 DEMONSTRATION OPERATIONS NS3 PAVING AND GRINDING OPERATIONS NS4 TEMPORARY STREAM CROSSING NS5 CLEAR WATER DIVERSION NS6 LILOTT CONNECTION/DISCHARGE NS7 POTABLE WATER IRRIGATION NS8 VEHICLE AND EQUIPMENT CLEANING NS9 VEHICLE AND EQUIPMENT FUELING NS10 VEHICLE AND EQUIPMENT MAINTENANCE NS11 PILE DRIVING OPERATIONS NS12 CONCRETE CURING NS13 CONCRETE FINISHING NS14 MATERIAL AND EQUIPMENT USE NS15 DEMOLITION ADJACENT TO WATER NS16 TEMPORARY BATCH PLANTS
- WASTE MANAGEMENT AND MATERIALS POLLUTION CONTROL WM1 MATERIAL DELIVERY AND STORAGE WM2 MATERIAL USE WM3 STOCKPILE MANAGEMENT WM4 SPILL PREVENTION AND CONTROL WM5 SOLID WASTE MANAGEMENT WM6 HAZARDOUS WASTE MANAGEMENT WM7 CONTAMINATION SOIL MANAGEMENT WM8 CONCRETE WASTE MANAGEMENT WM9 SANITARY/SEPTIC WASTE MANAGEMENT WM10 LIQUID WASTE MANAGEMENT
- TEMPORARY SEDIMENT CONTROL SE1 SILT FENCE SE2 SEDIMENT BASIN SE3 SEDIMENT TRAP SE4 CHECK DAM SE5 FILTER ROLLS SE6 GRAVEL BAG BERM SE7 STREET SWEEPING AND VACUUMING SE8 SANDBAG BARRIER SE9 STRAW BALE BARRIER SE10 STORM DRAIN INLET PROTECTION SE11 ACTIVE TREATMENT SYSTEMS SE12 TEMPORARY SILT DIKE SE13 COMPOST SOCKS & BERMS SE14 BOPFILTER BAGS

ISSUE NO HOUSE LATERAL CONNECTION PERMITS UNTIL OUTLET SEWER PC12306 IS ACCEPTED FOR PUBLIC USE BY THE COUNTY OF LOS ANGELES.

Notice to Contractor: Prior to removing the existing building sewer, new sewer lines must be constructed to redirect the sewer flow from the existing building sewer.

The developer shall be responsible for the continued maintenance of FC 12393 sanitary sewer until the County formally accepts it for maintenance. All manholes, manholes and laterals shall be protected from damage and infiltration.

EXISTING SEWER SYSTEM SHALL BE OPERATIONAL AT ALL TIMES DURING CONSTRUCTION/RECONSTRUCTION. NOTIFY AFFECTED HOMEOWNERS AT LEAST 72 HRS IN ADVANCE.

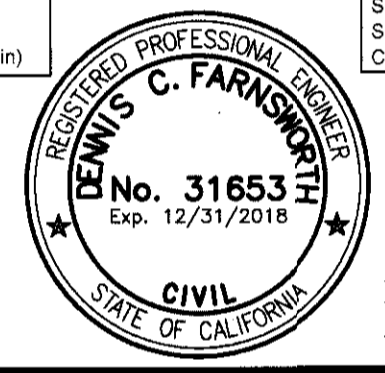
BACKWATER VALVES SHALL BE NECESSARY FOR 3 BUILDINGS.

SEWER VIDEO OF ALL SEGMENTS SHALL BE SUBMITTED PRIOR TO PARTIAL FIELD ACCEPTANCE (85%) AND COMPLETED FIELD ACCEPTANCE (88%). FINAL MAP AND AS-BUILT SEWER PLANS SHALL BE SUBMITTED PRIOR TO PARTIAL FIELD ACCEPTANCE.

MAINTAIN SEWER FLOW AT ALL TIMES DURING CONSTRUCTION BY PROVIDING TEMPORARY SEWER FACILITY.

SEWER LATERALS SHOWN ON PLANS ARE FOR REFERENCE ONLY.

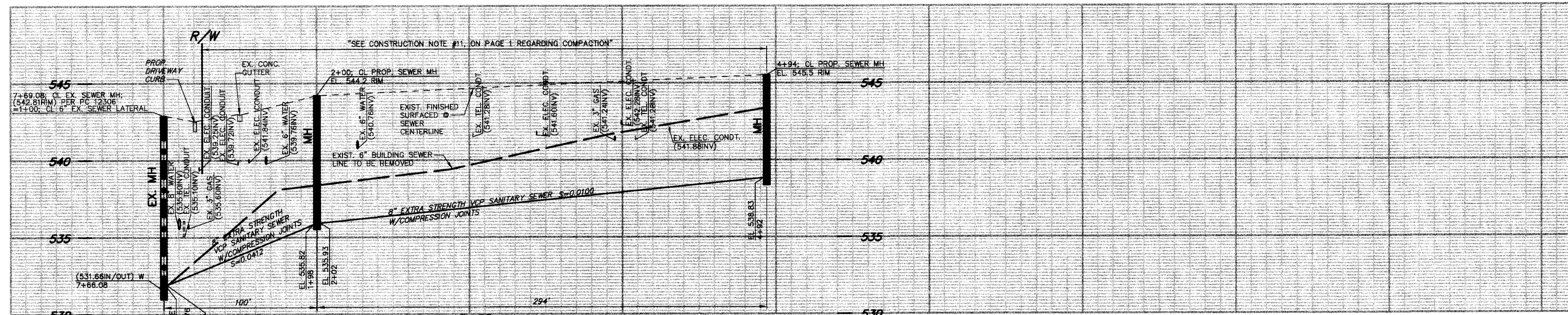
ALL SANITARY SEWER MANHOLE SHAFTS AND FRAMES SHALL BE WATER-TIGHT WITH BUTYL RUBBER MASTIC JOINT SEALING COMPOUND OR APPROVED EQUAL BY THE LA COUNTY PUBLIC WORKS.



NOTES: Any damage to the sewer line shall be the responsibility of the contractor/owner. All grading and construction occurring over and the vicinity of the existing sewer shall be performed in the presence of a County inspector. Where applicable, the sewers shall be protected per SDC Plan 2023-2 at all significant crossings.

STANDARD PLANS: The following latest revised standard plans on file in the office of the following department shall apply in the construction of this project. LOS ANGELES COUNTY DEPARTMENT OF PUBLIC WORKS: 2020-1 Bedding for sewer pipe, 2020-2 Precast concrete shallow manhole, 2020-3 Reinforced precast concrete manhole, 2020-4 Rectangular shallow manhole, 2021-1 Rectangular manhole frame and curb, 2021-5 Standard manhole stop. COUNTY SANITATION DISTRICT (CSD) NOTES: 1. No connection for the disposal of industrial wastes shall be made to sewers shown on these drawings until a permit for industrial waste water discharge has been issued by the County Sanitation Districts for each connection. If not connecting directly to a CSD sewer: 2. Prior to final acceptance of the project, notify the CSD superintendent of maintenance at (310) 636-1161 to report completion of connection to the local sewer that indirectly connects to the CSD sewer system. (For projects in the L.A. Basin)

Table with 5 columns: NO., REVISION, REVISED BY, APPROVED BY, DATE. The table is currently empty.

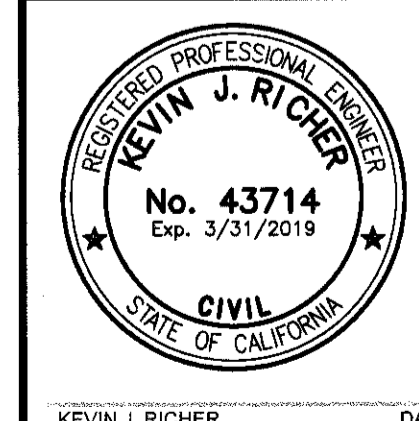


PS007704

SEWER IMPROVEMENTS and QUANTITIES table. IMPROVEMENTS: 1. CONSTRUCT STANDARD SEWER MANHOLE PER SPPWC STANDARD 200-3. 2. CONSTRUCT 8" EXTRA STRENGTH VCP SANITARY SEWER WITH COMPRESSION JOINTS. 3. CONSTRUCT 4" VCP SANITARY SEWER LATERAL. 4. EXISTING 6" VCP SEWER LINE TO BE REMOVED, BREAK INTO EXISTING MANHOLE AND FORM NEW CHANNEL IN BASE PER SPPWC STANDARD 208-2. 5. EXISTING SEWER CLEANOUT TO BE REMOVED. 6. RESTORE EXISTING AC PAVEMENT PER COUNTY INSPECTOR'S INSTRUCTION. QUANTITIES: 2 EA., 394 L.F., 15 L.F., 1 EA., 4 EA., 568 S.F.

- NOTES: 1. REMOVE EXISTING SEWER PIPES AND INSTALL NEW SEWER. 2. REMODEL AND RECONNECT ALL EXISTING HOUSE LATERALS PER LA COUNTY STANDARD.

BASIS OF BEARINGS: THE CENTERLINE OF CURRIER ROAD HAVING A BEARING OF N 89°36'49" E PER PM 256, M.B. 239/67-73. PLAN SCALE: 1" = 40'



NO LA COUNTY CHARGES FOR CONNECTION SEE COUNTY SANITATION DISTRICTS FOR SPECIAL CONNECTION CHARGES TEL: (626) 998-4288 EX. 2727 SCALE: VERT. 1" = 4' HORIZ. 1" = 40' DOUBLE SCALE (when applicable)

Table with 5 columns: NO., REVISION, REVISED BY, APPROVED BY, DATE. The table is currently empty.

SANITARY SEWER PLANS AS PART OF IMPROVEMENT FOR PM NO. 073998 PC NO. 12393 REVIEWED BY LAND DEVELOPMENT DIVISION BY [Signature] DATE 3/15/18 FINAL MAPS, SEWER AND LANDSCAPING SUBDIVISION PLAN CHECKING SECTION COUNTY OF LOS ANGELES DEPARTMENT OF PUBLIC WORKS

LAND DEVELOPMENT DESIGN COMPANY, LLC 2313 E. Philadelphia St., Ste. F Ontario, CA 91761 (909) 930-1466 FAX (909) 930-1468 PLANNING • CIVIL • SURVEYING