

SANITARY SEWERS

TO BE CONSTRUCTED IN
TRACT NO. 61105-03 PC NO. 12497J
2 SHEETS: 4 PAGES
COUNTY OF LOS ANGELES CALIFORNIA
EIMP2019000305
CSMD INDEX: N-1217

MARK PESTRELLA LA COUNTY DIRECTOR OF PUBLIC WORKS
APPROVED BY LAND DEVELOPMENT DIVISION
DATE 10/28/19
SUBMITTED DATE 10/28/19
FINAL MAPS, SEWER AND LANDSCAPING SUBDIVISION PLAN CHECKING SECTION

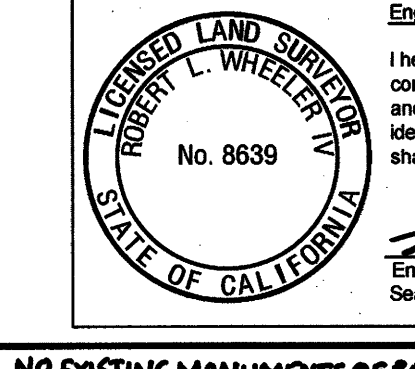
NEWHALL RANCH SANITATION DISTRICT
OF LOS ANGELES COUNTY, CALIFORNIA
ROBERT C. FERRANTE - CHIEF ENGINEER AND GENERAL MANAGER
APPROVED BY DATE 12-11-19

PRIVATE ENGINEERS NOTICE TO CONTRACTORS:

THE EXISTENCE AND LOCATION OF ANY UNDERGROUND UTILITY PIPES OR STRUCTURES SHOWN ON THESE PLANS IS REQUIRED BY A SEARCH OF AVAILABLE RECORDS TO THE BEST OF OUR KNOWLEDGE...

DATE 9/19/19
JONATHAN H. PETKE RCE NO. 67585

Engineer's/Surveyor's Statement Regarding the Presence of Monuments within project limits.
I hereby attest that I have located and referenced on these plans the monuments existing prior to construction...



NO EXISTING MONUMENTS OF RECORD IN THE PROJECT AREA OF THESE PLANS AT THE TIME OF SIGNATURE

PRIVATE CONTRACT SEWER GENERAL NOTES

- 1. A sewer construction permit shall be obtained and a fee paid for construction inspection and record plans to the County of Los Angeles Department of Public Works...
2. When work is within a contract city, a sewer construction permit shall be obtained and a fee paid for construction inspection and record plans to the City...
3. Prior to issuance of any permit, the contractor shall file a permit for excavations and trenches from the State of California Division of Industrial Safety...

NOTICE TO CONTRACTOR

Issue no house lateral connection permits until outlet sewer PC 12497A is accepted for public use by the County of Los Angeles Department of Public Works.
The developer shall be responsible for the continued maintenance of PC 12497J sanitary sewer until the County formally accepts it for maintenance...

Maintain sewer flow at all times during construction.
Sewer video of all segments shall be submitted prior to partial field acceptance (95%) and completed field acceptance (98%).

All sanitary sewer manhole shafts and frames shall be watertight with Butyl Rubber Mastic joint sealing compound or approved equal by the LA County Public Works.

All proposed utilities shown on this plan, except for sanitary sewer, are to be constructed per separate plan and permit.

Backwater valves shall be required for all units.

For buildings within 45 degree influence lines, the Engineer and/or Developer must notify the Building and Safety plan checker for deep footing requirements.

NOTES:
Any damage to the sewer line shall be the responsibility of the contractor. All grading and construction occurring over and to the vicinity of the existing sewer shall be performed in the presence of a County Inspector...

CONSTRUCTION NOTES

- 1. Provide survey stakes on the property line or property lines produced at right angles to the sewer line at the centerline of each manhole.
2. Vitrified clay pipe joints shall be type "D" or "G" per "Standard Specifications for Public Works Construction" Section 208-2.
3. If a power pole is within three feet of the sewer, the sewer shall be encased, per LACDPW Standard Plan 2023-2, Case II, two feet on each side of the point of interference...

STORMWATER POLLUTION PLAN NOTES

- A. NOTES:
1. Every effort should be made to eliminate the discharge of non-stormwater from the project site at all times.
2. Eroded sediments and other pollutants must be retained on-site and may not be transported from the site via sheet flow, swales, area drains, natural drainage courses or wind.
3. Stockpiles of earth and other construction related materials must be protected from being transported from the site by the forces of wind or water...

- EROSION CONTROL
E1 SCHEDULING
E2 PRESERVATION OF EXISTING VEGETATION
E3 HYDRAULIC MULCH
E4 HYDROSEEDING
E5 SOIL BINDERS
E6 STRAW MULCH
E7 GEOTEXTILES & MATS
E8 WOOD MULCHING
E9 EARTH Dikes AND DRAINAGE SWALES
E10 VELOCITY DISSIPATION DEVICES
E11 SLOPE DRAINS
E12 STREAMBANK STABILIZATION
E13 RESERVED
E14 COMPOST BLANKETS
E15 SOIL PREPARATION/ROUGHENING
E16 NON-VEGETATED STABILIZATION

- NON-STORM WATER MANAGEMENT
N1 WATER CONSERVATION PRACTICES
N2 DEWATERING OPERATIONS
N3 PAVING AND GRADING OPERATIONS
N4 TEMPORARY STREAM CROSSING
N5 CLEAR WATER DIVERSION
N6 ELLIOT CONNECTION/CHARGE
N7 PORTABLE WATER/IRRIGATION
N8 VEHICLE AND EQUIPMENT CLEANING
N9 VEHICLE AND EQUIPMENT FUELING
N10 VEHICLE AND EQUIPMENT MAINTENANCE
N11 FLEET DRIVING OPERATIONS
N12 CONCRETE CURING
N13 CONCRETE FINISHING
N14 MATERIAL AND EQUIPMENT USE
N15 DEMOLITION ADJACENT TO WATER
N16 TEMPORARY BATCH PLANTS

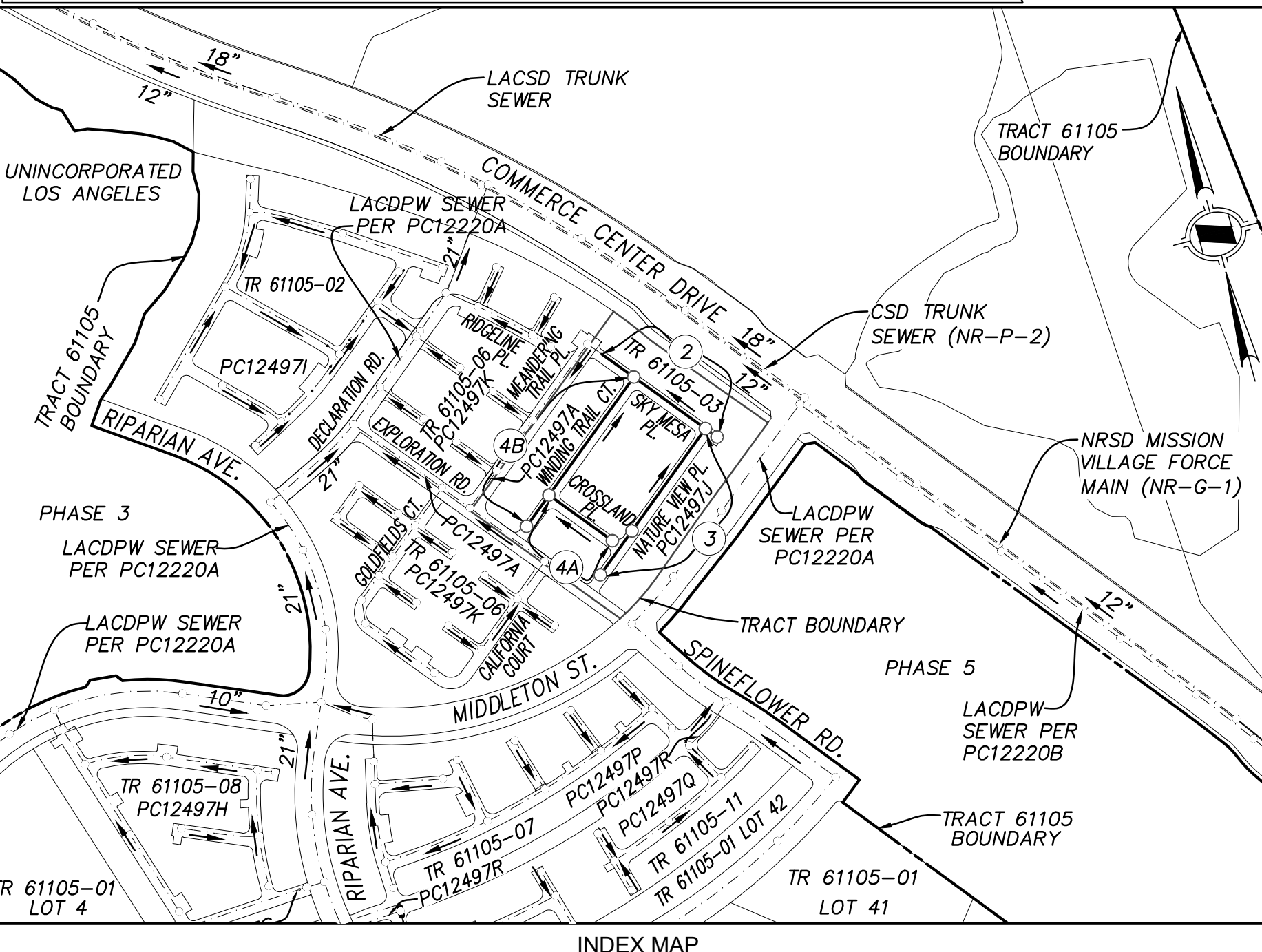
- WASTE MANAGEMENT AND MATERIALS POLLUTION CONTROL
WM1 MATERIAL DELIVERY AND STORAGE
WM2 MATERIAL USE
WM3 STOCKPILE MANAGEMENT
WM4 SPILL PREVENTION AND CONTROL
WM5 SOLID WASTE MANAGEMENT
WM6 HAZARDOUS WASTE MANAGEMENT
WM7 CONTAMINATION SOIL MANAGEMENT
WM8 CONCRETE WASTE MANAGEMENT
WM9 SANITARY/SPECIFIC WASTE MANAGEMENT
WM10 LIQUID WASTE MANAGEMENT
WM11 TEMPORARY SEDIMENT CONTROL
SE1 SILT FENCE
SE2 SEDIMENT BASIN
SE3 SEDIMENT TRAP
SE4 CHECK DAM
SE5 FIBER ROLLS
SE6 GRAVEL BAGS/BERM
SE7 STREET SWEEPING AND VACUUMING
SE8 SANDBAG BARRIER
SE9 STRAW BALE BARRIER
SE10 STORM DRAIN INLET PROTECTION
SE11 ACTIVE TREATMENT SYSTEMS
SE12 TEMPORARY SILT DIKE
SE13 COMPOST SOCKS & BERMS
SE14 BOP/TRELLIS

- EQUIPMENT TRACKING CONTROL
TC1 STABILIZED CONSTRUCTION ENTRANCE EXIT
TC2 STABILIZED CONSTRUCTION ROADWAY
TC3 ENTRANCE/OUTLET TIRE WASH

- B. STANDARD PLANS:
The following latest revised standard plans on file in the office of the following department shall apply in the construction of this project.
LOS ANGELES COUNTY DEPARTMENT OF PUBLIC WORKS
2003-0 Legend for sanitary sewer plans and profiles and district maps.
2003-1 Precast concrete shallow manhole.
2003-2 Reinforced precast concrete manhole.
2004-1 Rectangular shallow manhole.
2004-1 Rectangular manhole frame and cover.
2015-1 Standard manhole post.
STANDARD PLANS FOR PUBLIC WORKS CONSTRUCTION (SPWC)
200-3 Precast reinforced concrete manhole above ground.
207-2 Precast reinforced concrete manhole above ground.
208-2 Breaking into existing manholes.
210-3 Manhole frame and cover locking type.
220-3 Chimneys.

- COUNTY SANITATION DISTRICTS (CSD) NOTES:
1. No connection for the disposal of industrial wastes shall be made to sewers shown on these plans until a permit for industrial wastewater discharge has been issued by CSD for said connection.
2. Prior to final acceptance of the project, notify the CSD Superintendent of maintenance at (661) 257-4809 to report completion of this local sewer that indirectly discharges into the CSD sewer system.

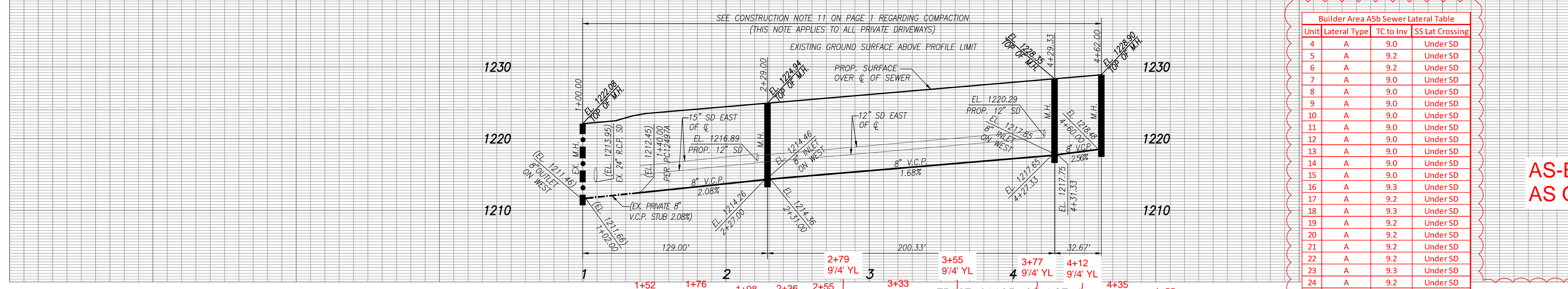
NEWHALL QUAD (2009) NAVD 88
BENCH MARK: LACDPW L 5402
RND HD SPK IN LOWER OF TWO CONC HDWLS @ N END 24' W/O C/L THE OLD RD (W ROW) & 0.6MI S/O HENRY MAYO DR @ MI MKR #6.25
ELEV. 1031.831 FEET ADJUSTMENT 2009
SURVEYOR'S NOTE: TOPO & DESIGN ELEV ARE BASED ON 1995 ADJUSTMENT. TO ACQUIRE 2009 ADJUSTMENT ELEV, SUBTRACT 0.120 FT FROM ALL ELEVATIONS DEPICTED ON THESE PLANS.



INDEX MAP SCALE: 1"=300'
BUILDING AND SAFETY DISTRICT OFFICE: SANTA CLARITA
NOTES: NUMBER IN CIRCLE INDICATES PAGE NUMBER.
ALL MAINLINE SANITARY SEWERS ARE WITHIN THE SANITARY SEWER EASEMENT

REVISION TABLE with columns for NO., REVISION, REVISED BY, APPROVED BY, and DATE.

THE BEARINGS SHOWN HEREON ARE BASED ON THE BEARING 356-56-RW OF THE SOUTHEASTERLY LINE OF PARCEL MAP NO. 24500-01 FILED IN BOOK 293 PAGES 34 THROUGH 67, INCLUSIVE, OF PARCEL MAPS RECORDS OF LOS ANGELES COUNTY.



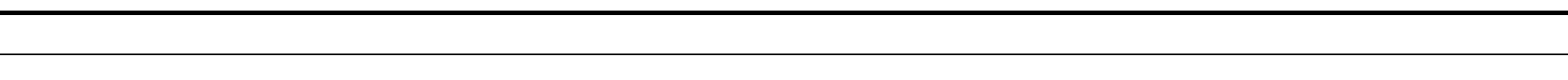
Builder Area ASb Sewer Lateral Table with columns for Unit, Lateral Type, TC to Inv, and SS Lat Crossing.

AS-BUILT AS OF 4-14-2021

NOTE: HOUSE LATERALS INVERTS TO BE CONSTRUCTED PER SEWER LATERAL TABLE HEREON

NOTE:
\* ACCEPTANCE OF THIS 8" LINE FOR COUNTY MAINTENANCE IS CONTINGENT UPON MEETING ALL CONSTRUCTION AND INSPECTION REQUIREMENTS FOR THE FUTURE UPSTREAM SYSTEM.
\*\* BACKWATER VALVES SHALL BE REQUIRED FOR ALL UNITS.

SANITARY SEWER DATA TABLE with columns for BEARING/DELTA and LENGTH.

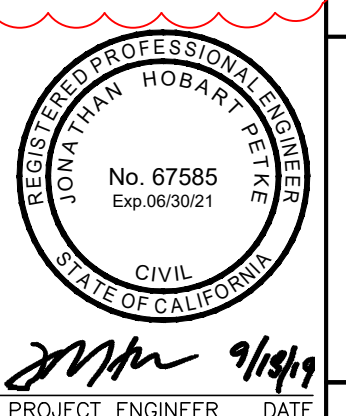


NO LA COUNTY CHARGES FOR CONNECTION
SEE COUNTY SANITATION DISTRICTS FOR SPECIAL CONNECTION CHARGES
SCALE: VERT. 1" = 8'
HORIZ. 1" = 40'
DOUBLE SCALE

REVIEWED BY LAND DEVELOPMENT DIVISION
DATE 10/19/19
FINAL MAPS, SEWER AND LANDSCAPING SUBDIVISION PLAN CHECKING SECTION

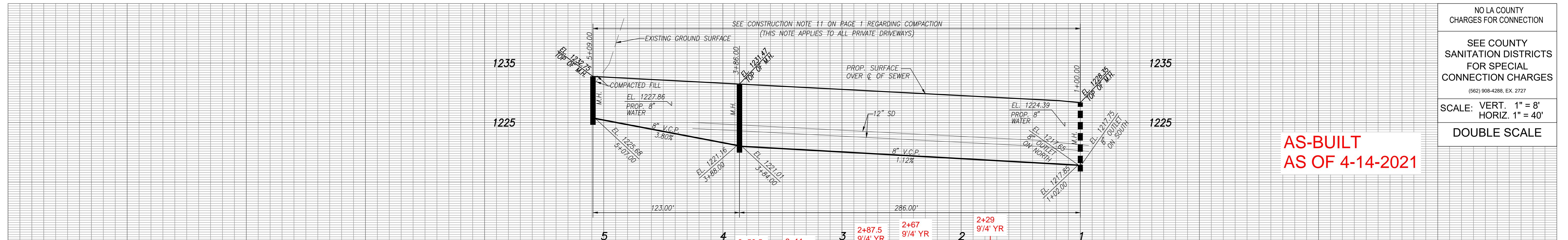
SANITARY SEWER PLANS IN TRACT NO. 61105-03 LOT 1 PC NO. 12497J

HUNSAKER & ASSOCIATES IRVINE, INC. PLANNING ENGINEERING SURVEYING
Three Hughes - Irvine, CA 92618 - PH: (949) 583-1010 - FX: (949) 583-0759



PROJECT ENGINEER DATE DWG





NO LA COUNTY CHARGES FOR CONNECTION  
 SEE COUNTY SANITATION DISTRICTS FOR SPECIAL CONNECTION CHARGES  
 (562) 908-4288, EX. 2727  
 SCALE: VERT. 1" = 8'  
 HORIZ. 1" = 40'  
 DOUBLE SCALE

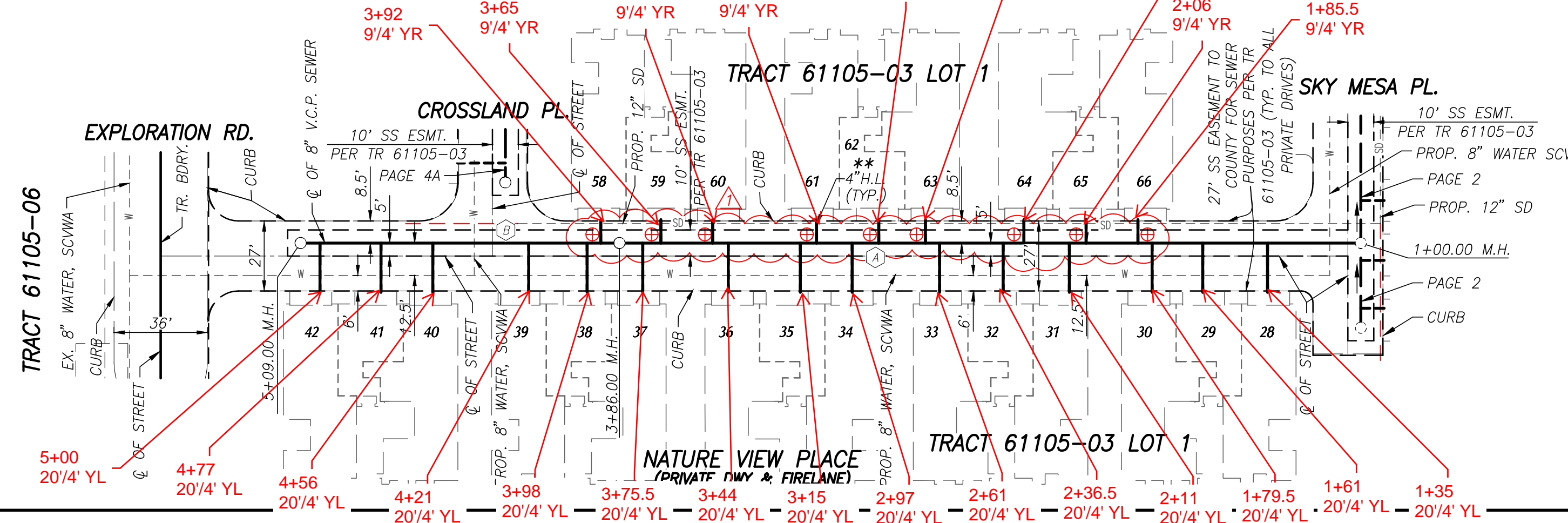
AS-BUILT  
 AS OF 4-14-2021

NOTE:  
 HOUSE LATERALS INVERTS TO BE CONSTRUCTED PER SEWER LATERAL TABLE ON PAGE 2

**SANITARY SEWER DATA TABLE**

BEARING/Delta	LENGTH
(A) N 50°38'57" E	286.00'
(B) N 50°38'57" E	123.00'

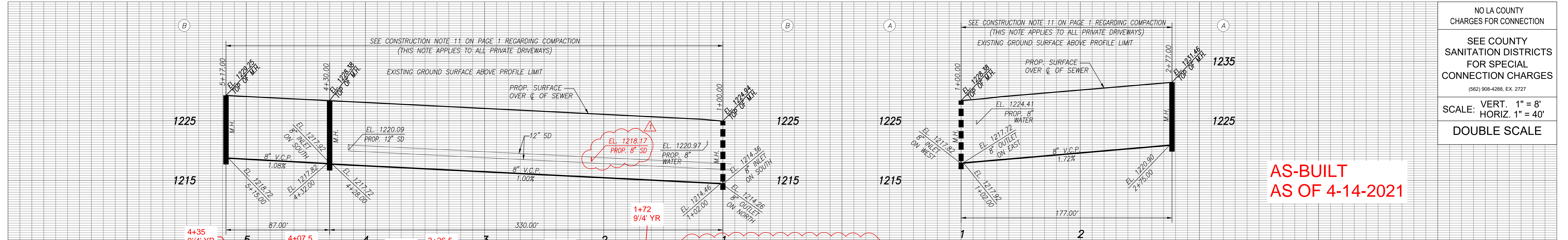
NOTE:  
 \*\* BACKWATER VALVES SHALL BE REQUIRED FOR ALL UNITS.



PLAN  
 SCALE: 1" = 40'

REVIEWED BY LAND DEVELOPMENT DIVISION  
 BY: [Signature] DATE: 10/10/19  
 FINAL MAPS, SEWER AND LANDSCAPING SUBDIVISION PLAN CHECKING SECTION

REGISTERED PROFESSIONAL ENGINEER  
 No. 67585  
 Exp. 08/30/21  
 CIVIL  
 STATE OF CALIFORNIA



NO LA COUNTY CHARGES FOR CONNECTION  
 SEE COUNTY SANITATION DISTRICTS FOR SPECIAL CONNECTION CHARGES  
 (562) 908-4288, EX. 2727  
 SCALE: VERT. 1" = 8'  
 HORIZ. 1" = 40'  
 DOUBLE SCALE

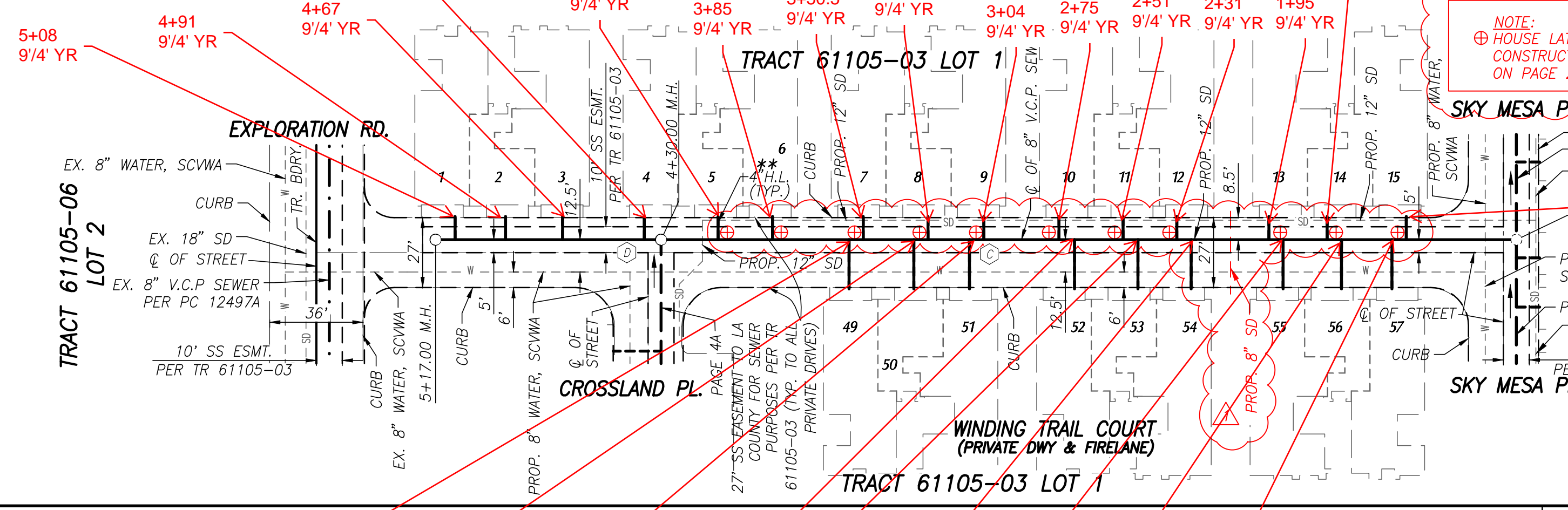
AS-BUILT  
 AS OF 4-14-2021

NOTE:  
 HOUSE LATERALS INVERTS TO BE CONSTRUCTED PER SEWER LATERAL TABLE ON PAGE 2

**SANITARY SEWER DATA TABLE**

BEARING/Delta	LENGTH
(C) N 50°38'57" E	330.00'
(D) N 50°38'57" E	87.00'
(E) N 39°21'03" W	177.00'

NOTE:  
 \*\* BACKWATER VALVES SHALL BE REQUIRED FOR ALL UNITS.



PLAN  
 SCALE: 1" = 40'

REVIEWED BY LAND DEVELOPMENT DIVISION  
 BY: [Signature] DATE: 10/10/19  
 FINAL MAPS, SEWER AND LANDSCAPING SUBDIVISION PLAN CHECKING SECTION

REGISTERED PROFESSIONAL ENGINEER  
 No. 67585  
 Exp. 08/30/21  
 CIVIL  
 STATE OF CALIFORNIA

3+56 19/4' YL  
 3+32 19/4' YL  
 3+10 19/4' YL  
 2+69 19/4' YL  
 2+45 19/4' YL  
 2+25 19/4' YL  
 1+88.5 19/4' YL  
 1+67 19/4' YL  
 1+47.5 19/4' YL

C:\Newhall\_Renach\61105\_Mission\_Village\61105-Builder\MSA\sewer\HW935-02\_P11\_SS\_PC12497J\_ASB.dwg Plotted On: Apr 08, 2020 - 11:44am by Doris