

STORMWATER POLLUTION PLAN NOTES

A. NOTES:

- Every effort should be made to minimize the discharge of non-stormwater from the project site at all times.
- Blocked sediments and other pollutants must be retained on-site and may not be transported from the site via street flow, vehicle, area drains, natural drainage courses or water.
- Blockages of earth and other obstruction related materials must be prevented from being transported from the site by the force of water or wind.
- Fuels, oils, solvents, and other toxic materials must be stored in accordance with this listing and not to contaminate the soil and surface water. All approved storage containers are to be protected from the weather. Spills must be cleaned up immediately and disposed of in a proper manner. Spills may not be washed into the drainage system.
- Excess or waste concrete may not be washed into the public way or any other drainage system. Provisions shall be made to contain concrete wash-water on-site and may be disposed of at a safe site.
- Trash and construction related solid wastes must be deposited into a covered receptacle to prevent contamination of rainwater and dispersed by wind.
- Sediments and other materials may not be tracked from the site by vehicle traffic. The construction entrance/receptacle must be installed so as to inhibit sediments from being deposited into the public way. Sediment receptacles must be swept up immediately and not be washed down by rain or other means.
- Any slopes with disturbed areas or denuded of vegetation shall be stabilized so as to inhibit erosion by wind and water.
- The following BMPs as outlined in, but not limited to, the latest edition of the California Best Management Practices (Construction) or California Stormwater Quality Handbook (Construction Site BMP Manual), may apply during the construction of the project (additional measures may be required if deemed appropriate by the Project Engineer or the Building Official).

NON-POINT SOURCE AND MATERIALS POLLUTION CONTROL:

EROSION CONTROL:

- EC1: EROSION CONTROL
- EC2: PREVENTION OF EXISTING VEGETATION
- EC3: HOLOSIDE MULCH
- EC4: HOLOSIDE MULCH
- EC5: HOLOSIDE MULCH
- EC6: STRIP MULCH
- EC7: STRIP MULCH
- EC8: STRIP MULCH
- EC9: STRIP MULCH
- EC10: STRIP MULCH
- EC11: STRIP MULCH
- EC12: STRIP MULCH
- EC13: STRIP MULCH
- EC14: STRIP MULCH
- EC15: STRIP MULCH
- EC16: STRIP MULCH
- EC17: STRIP MULCH
- EC18: STRIP MULCH
- EC19: STRIP MULCH
- EC20: STRIP MULCH
- EC21: STRIP MULCH
- EC22: STRIP MULCH
- EC23: STRIP MULCH
- EC24: STRIP MULCH
- EC25: STRIP MULCH
- EC26: STRIP MULCH
- EC27: STRIP MULCH
- EC28: STRIP MULCH
- EC29: STRIP MULCH
- EC30: STRIP MULCH
- EC31: STRIP MULCH
- EC32: STRIP MULCH
- EC33: STRIP MULCH
- EC34: STRIP MULCH
- EC35: STRIP MULCH
- EC36: STRIP MULCH
- EC37: STRIP MULCH
- EC38: STRIP MULCH
- EC39: STRIP MULCH
- EC40: STRIP MULCH
- EC41: STRIP MULCH
- EC42: STRIP MULCH
- EC43: STRIP MULCH
- EC44: STRIP MULCH
- EC45: STRIP MULCH
- EC46: STRIP MULCH
- EC47: STRIP MULCH
- EC48: STRIP MULCH
- EC49: STRIP MULCH
- EC50: STRIP MULCH
- EC51: STRIP MULCH
- EC52: STRIP MULCH
- EC53: STRIP MULCH
- EC54: STRIP MULCH
- EC55: STRIP MULCH
- EC56: STRIP MULCH
- EC57: STRIP MULCH
- EC58: STRIP MULCH
- EC59: STRIP MULCH
- EC60: STRIP MULCH
- EC61: STRIP MULCH
- EC62: STRIP MULCH
- EC63: STRIP MULCH
- EC64: STRIP MULCH
- EC65: STRIP MULCH
- EC66: STRIP MULCH
- EC67: STRIP MULCH
- EC68: STRIP MULCH
- EC69: STRIP MULCH
- EC70: STRIP MULCH
- EC71: STRIP MULCH
- EC72: STRIP MULCH
- EC73: STRIP MULCH
- EC74: STRIP MULCH
- EC75: STRIP MULCH
- EC76: STRIP MULCH
- EC77: STRIP MULCH
- EC78: STRIP MULCH
- EC79: STRIP MULCH
- EC80: STRIP MULCH
- EC81: STRIP MULCH
- EC82: STRIP MULCH
- EC83: STRIP MULCH
- EC84: STRIP MULCH
- EC85: STRIP MULCH
- EC86: STRIP MULCH
- EC87: STRIP MULCH
- EC88: STRIP MULCH
- EC89: STRIP MULCH
- EC90: STRIP MULCH
- EC91: STRIP MULCH
- EC92: STRIP MULCH
- EC93: STRIP MULCH
- EC94: STRIP MULCH
- EC95: STRIP MULCH
- EC96: STRIP MULCH
- EC97: STRIP MULCH
- EC98: STRIP MULCH
- EC99: STRIP MULCH
- EC100: STRIP MULCH

TEMPORARY SEDIMENT CONTROL:

- TS1: SEDIMENT CONTROL
- TS2: SEDIMENT CONTROL
- TS3: SEDIMENT CONTROL
- TS4: SEDIMENT CONTROL
- TS5: SEDIMENT CONTROL
- TS6: SEDIMENT CONTROL
- TS7: SEDIMENT CONTROL
- TS8: SEDIMENT CONTROL
- TS9: SEDIMENT CONTROL
- TS10: SEDIMENT CONTROL
- TS11: SEDIMENT CONTROL
- TS12: SEDIMENT CONTROL
- TS13: SEDIMENT CONTROL
- TS14: SEDIMENT CONTROL
- TS15: SEDIMENT CONTROL
- TS16: SEDIMENT CONTROL
- TS17: SEDIMENT CONTROL
- TS18: SEDIMENT CONTROL
- TS19: SEDIMENT CONTROL
- TS20: SEDIMENT CONTROL
- TS21: SEDIMENT CONTROL
- TS22: SEDIMENT CONTROL
- TS23: SEDIMENT CONTROL
- TS24: SEDIMENT CONTROL
- TS25: SEDIMENT CONTROL
- TS26: SEDIMENT CONTROL
- TS27: SEDIMENT CONTROL
- TS28: SEDIMENT CONTROL
- TS29: SEDIMENT CONTROL
- TS30: SEDIMENT CONTROL
- TS31: SEDIMENT CONTROL
- TS32: SEDIMENT CONTROL
- TS33: SEDIMENT CONTROL
- TS34: SEDIMENT CONTROL
- TS35: SEDIMENT CONTROL
- TS36: SEDIMENT CONTROL
- TS37: SEDIMENT CONTROL
- TS38: SEDIMENT CONTROL
- TS39: SEDIMENT CONTROL
- TS40: SEDIMENT CONTROL
- TS41: SEDIMENT CONTROL
- TS42: SEDIMENT CONTROL
- TS43: SEDIMENT CONTROL
- TS44: SEDIMENT CONTROL
- TS45: SEDIMENT CONTROL
- TS46: SEDIMENT CONTROL
- TS47: SEDIMENT CONTROL
- TS48: SEDIMENT CONTROL
- TS49: SEDIMENT CONTROL
- TS50: SEDIMENT CONTROL
- TS51: SEDIMENT CONTROL
- TS52: SEDIMENT CONTROL
- TS53: SEDIMENT CONTROL
- TS54: SEDIMENT CONTROL
- TS55: SEDIMENT CONTROL
- TS56: SEDIMENT CONTROL
- TS57: SEDIMENT CONTROL
- TS58: SEDIMENT CONTROL
- TS59: SEDIMENT CONTROL
- TS60: SEDIMENT CONTROL

STANDARD PLANS:

The following latest revised standard plans or file in the office of the following department shall apply to the construction of this project.

LOS ANGELES COUNTY DEPARTMENT OF PUBLIC WORKS

- 2001-1 Legend for sanitary sewer plans and profiles and related notes
- 2001-2 Precast concrete manhole manholes
- 2001-3 Reinforced precast concrete manholes
- 2001-4 Rectangular manhole frames and cover
- 2001-5 Rectangular manhole frames and cover
- 2001-6 Standard plans for Public Works Construction (SPWC)
- 2001-7 Precast reinforced concrete manhole base
- 2001-8 Manhole frames and cover
- 2001-9 Manhole frames and cover
- 2001-10 Manhole frames and cover
- 2001-11 Manhole frames and cover
- 2001-12 Manhole frames and cover
- 2001-13 Manhole frames and cover
- 2001-14 Manhole frames and cover
- 2001-15 Manhole frames and cover
- 2001-16 Manhole frames and cover
- 2001-17 Manhole frames and cover
- 2001-18 Manhole frames and cover
- 2001-19 Manhole frames and cover
- 2001-20 Manhole frames and cover
- 2001-21 Manhole frames and cover
- 2001-22 Manhole frames and cover
- 2001-23 Manhole frames and cover
- 2001-24 Manhole frames and cover
- 2001-25 Manhole frames and cover
- 2001-26 Manhole frames and cover
- 2001-27 Manhole frames and cover
- 2001-28 Manhole frames and cover
- 2001-29 Manhole frames and cover
- 2001-30 Manhole frames and cover
- 2001-31 Manhole frames and cover
- 2001-32 Manhole frames and cover
- 2001-33 Manhole frames and cover
- 2001-34 Manhole frames and cover
- 2001-35 Manhole frames and cover
- 2001-36 Manhole frames and cover
- 2001-37 Manhole frames and cover
- 2001-38 Manhole frames and cover
- 2001-39 Manhole frames and cover
- 2001-40 Manhole frames and cover
- 2001-41 Manhole frames and cover
- 2001-42 Manhole frames and cover
- 2001-43 Manhole frames and cover
- 2001-44 Manhole frames and cover
- 2001-45 Manhole frames and cover
- 2001-46 Manhole frames and cover
- 2001-47 Manhole frames and cover
- 2001-48 Manhole frames and cover
- 2001-49 Manhole frames and cover
- 2001-50 Manhole frames and cover
- 2001-51 Manhole frames and cover
- 2001-52 Manhole frames and cover
- 2001-53 Manhole frames and cover
- 2001-54 Manhole frames and cover
- 2001-55 Manhole frames and cover
- 2001-56 Manhole frames and cover
- 2001-57 Manhole frames and cover
- 2001-58 Manhole frames and cover
- 2001-59 Manhole frames and cover
- 2001-60 Manhole frames and cover
- 2001-61 Manhole frames and cover
- 2001-62 Manhole frames and cover
- 2001-63 Manhole frames and cover
- 2001-64 Manhole frames and cover
- 2001-65 Manhole frames and cover
- 2001-66 Manhole frames and cover
- 2001-67 Manhole frames and cover
- 2001-68 Manhole frames and cover
- 2001-69 Manhole frames and cover
- 2001-70 Manhole frames and cover
- 2001-71 Manhole frames and cover
- 2001-72 Manhole frames and cover
- 2001-73 Manhole frames and cover
- 2001-74 Manhole frames and cover
- 2001-75 Manhole frames and cover
- 2001-76 Manhole frames and cover
- 2001-77 Manhole frames and cover
- 2001-78 Manhole frames and cover
- 2001-79 Manhole frames and cover
- 2001-80 Manhole frames and cover
- 2001-81 Manhole frames and cover
- 2001-82 Manhole frames and cover
- 2001-83 Manhole frames and cover
- 2001-84 Manhole frames and cover
- 2001-85 Manhole frames and cover
- 2001-86 Manhole frames and cover
- 2001-87 Manhole frames and cover
- 2001-88 Manhole frames and cover
- 2001-89 Manhole frames and cover
- 2001-90 Manhole frames and cover
- 2001-91 Manhole frames and cover
- 2001-92 Manhole frames and cover
- 2001-93 Manhole frames and cover
- 2001-94 Manhole frames and cover
- 2001-95 Manhole frames and cover
- 2001-96 Manhole frames and cover
- 2001-97 Manhole frames and cover
- 2001-98 Manhole frames and cover
- 2001-99 Manhole frames and cover
- 2001-100 Manhole frames and cover

COUNTY SANITATION DISTRICTS (CSD) NOTES:

- No connection to the disposal of industrial wastes shall be made to sewers shown on these plans until a permit for industrial wastewater discharge has been issued by CSD for use connection.
- Prior to final acceptance of this project, notify CSD Superintendent of maintenance at (818) 251-4609 to report installation of this local sewer that discharges into the CSD sewer system.

NOTICE TO CONTRACTOR

There is no backwater valve permit until called sewer PC 12220A is accepted for public use by the County of Los Angeles Department of Public Works.

The contractor shall be responsible for the continued maintenance of PC 12220A sanitary sewer until the County formally accepts the maintenance. All manholes, manholes and laterals shall be protected from damage and infiltration.

Maintain sewer level at all times during construction.

Sewer video of all segments shall be established prior to partial backfill acceptance (PBA) and completed final acceptance (PFA). Final map and as-built sewer plans shall be submitted prior to PBA.

All sanitary sewer manhole shafts and frames shall be water-tight with 1/2" Rubber Membrane joint sealing compound or approved equal by the LA County Public Works.

All proposed utilities shown shall be established prior to partial backfill acceptance (PBA) and completed final acceptance (PFA). Final map and as-built sewer plans shall be submitted prior to PBA.

Backwater valves shall be required for all units.

For buildings placed within the 4' degree influence lines, the Engineer and/or Developer must verify the Building and Safety Department's Backwater Valve (BWV) requirements.

Notes:

- Any change to the sewer line shall be the responsibility of the contractor. All grading and construction occurring over and above the existing sewer line shall be performed in the presence of a County Inspector. Where applicable, the sewer shall be protected by a 24" concrete slab at all significant crossings.

PRIVATE CONTRACTOR SEWER GENERAL NOTES

- A sewer contractor permit shall be obtained and a bid for construction inspection and report sent to the County of Los Angeles Department of Public Works at the County Office, 120 South Spring Street, Los Angeles, California.
- Private sewer within a contract bid, a sewer contractor permit shall be obtained and a bid for construction inspection and report sent to the County of Los Angeles Department of Public Works at the County Office, 120 South Spring Street, Los Angeles, California.
- The contractor must contact the Director of Public Works of the City to determine the location to pay the inspection fees.
- All work shall be in accordance with the latest approved edition of the "Standard Specifications for Public Works Construction" including amendments thereto as published by the County of Los Angeles Department of Public Works. Plans shall be updated 30 days prior to construction of the sewerage project.
- If work is done in a State Highway, a permit must be obtained from the State of California Division of Highways, 120 South Spring Street, Los Angeles, California.
- The contractor shall be responsible for the maintenance of the sewerage project until the County of Los Angeles Department of Public Works has accepted the project.
- Approved if the project by the County of Los Angeles Department of Public Works does not constitute a representation as to the location of the existence or nonexistence of any underground utility or structure within the limits of the project. The note applies to all projects.
- All work shall be in accordance with the latest approved edition of the "Standard Specifications for Public Works Construction" including amendments thereto as published by the County of Los Angeles Department of Public Works. Plans shall be updated 30 days prior to construction of the sewerage project.
- The contractor's attention is directed to Section 1104.2 of the "Standard Specifications for Public Works Construction" in regard to safety orders and shall conform to the "Minimum Public Works Requirements" as shown on County of Los Angeles Department of Public Works Standard Plan No. 6006-1.
- Elevations are in feet above U.S.C. and G.S. sea level datum of 1985.
- No excavations shall be made in these plans without the approval of the County of Los Angeles Department of Public Works.
- No representation of the County of Los Angeles Department of Public Works will survey or layout any portion of the work.
- Grades within this representation is to be established as shown on plans and profiles. Grades shall be top of curb, centerline of street, or centerline of alley, as shown on profiles and profiles of all grades between said designated points. The grade shall be established so as to conform to a straight line drawn between said design points.
- The private engineer shall furnish the County of Los Angeles Department of Public Works with grade sheets and stationing for all house laterals and "2" and "4" manholes and shall provide stationing for them in their proper locations with stationing plany marks. All house laterals shall be constructed in a straight alignment at right angles from the main sewer except as shown on the plans. House laterals from chimney shall not have an angle of less than 45 degrees with the M.I. sewer. Any change in alignment shall be indicated in writing by the private engineer.
- The private engineer shall furnish the house lateral depth at the property line below the top of one observation for each house lateral on the grade sheet.
- An approved backwater valve is required when the pipe is lower in elevation than the top of the next upstream manhole.
- Contract Engineer/Programmer Division for an Industrial Waste Discharge Permit at (213) 458-3817.
- When work is encroaching into Flood Control District easement and/or crossing its facilities, a Flood Control permit shall be obtained from the Los Angeles County Flood Control District at 16161 Hollywood Boulevard at least a week prior to any desired start-date. If you need additional information, you may contact Land Development Department at (213) 458-4400.

CONSTRUCTION NOTES

- Backwater valves shall be required for all units.
- Grading shall be in accordance with the latest approved edition of the "Standard Specifications for Public Works Construction" Section 208-2.
- If a sewer pipe within three feet of the sewer, the sewer shall be installed per LADCPW Standard Plan 2002-2, Case 1, two feet on each side from the point of interference.
- House laterals shall be installed per LADCPW Standard Plan 2002-2, Case 1, unless otherwise approved by the County of Los Angeles Department of Public Works.
- Ways or lot branches may be used for connection to the mainline sewer except as noted.
- If grading of the construction is determined that there is less than four feet of cover over the top of a manhole or house lateral V.C.P. sewer, which is not indicated on the plans, the pipe shall be encased per LADCPW Standard Plan 2002-2, Case 1, unless otherwise approved by the County of Los Angeles Department of Public Works.
- All structures shall be constructed in accordance with the latest approved edition of the "Standard Specifications for Public Works Construction" including amendments thereto as published by the County of Los Angeles Department of Public Works.
- Reinforced all manholes within sewer lines to meet Department of Public Works California State Highway requirements in accordance with the permits.
- Full compliance with Section 306.12 of the "Standard Specifications for Public Works Construction" will be required for a street. Certification of backfill, completion, and final acceptance by a qualified Civil Engineer shall be provided prior to the issuance of a Certificate of Final Acceptance.
- All backfill and fills outside of the street right of way shall be compacted to 90 percent of the maximum density determined by ASTM D1556 Compaction Test D 1556 Method "C", unless otherwise indicated. This shall be certified by a qualified Civil Engineer. The certification shall be submitted to the Land Development Division, Public Section of the County of Los Angeles Department of Public Works prior to the acceptance of the work by the County.
- Manhole tops at unimproved rights of way to be in accordance with finished grade.
- Sewers to be under the drainage pipe Section 208.2 of the "Standard Specifications for Public Works Construction" and "Special Provisions for the Construction of Sanitary Sewer" as published by the County of Los Angeles Department of Public Works.
- Manhole tops at improved rights of way to be 1" to 2" with finished grade.
- All pipe materials shall be installed in accordance with the latest approved edition of the "Standard Specifications for Public Works Construction" and "Special Provisions for the Construction of Sanitary Sewer" as published by the County of Los Angeles Department of Public Works.
- All ductile iron pipes shall be installed with protective 401 Corrosion Eddy lining.
- Cured in place pipe liner shall be used for an extra depth of pipe if extra eddy lining is required.
- All Chimeys shall have terminal device structure per SPPWC spec. plan 200-2 and with traffic loaded frame and cover.

PROFILE, ALIGNMENT, AND GRADE OF

SANITARY SEWERS

TO BE CONSTRUCTED IN

TRACT NO. 61105-16 LOT 1 PC NO. 12497U

42 SHEETS: 7th PAGES

COUNTY OF LOS ANGELES CALIFORNIA

EMP2019000360

CSDM INDEX: N-1216

MARK FRESTELLA LA COUNTY DIRECTOR OF PUBLIC WORKS

APPROVED BY LAND DEVELOPMENT DIVISION

DATE 1/27/20

SUBMITTED BY *Chris Stephens* DATE 1/27/2020

DATE 2/3/2020

NEVHALL RANCH SANITATION DISTRICT

OF LOS ANGELES COUNTY, CALIFORNIA

ROBERT C. FERRANTE - CHIEF ENGINEER AND GENERAL MANAGER

APPROVED BY *Chris Stephens* DATE 2/3/2020

PRIVATE ENGINEERS NOTICE TO CONTRACTORS:

THE EXISTENCE AND LOCATION OF ANY UNDERGROUND UTILITY PIPES OR STRUCTURES SHOWN ON THESE PLANS IS ASSUMED BY A REASONABLE INVESTIGATION BY THE BEST OF OUR KNOWLEDGE. THERE ARE NO GUARANTEES OR WARRANTIES AS SHOWN ON THIS DRAWING. PRIOR TO EXCAVATION THE CONTRACTOR SHALL CALL TOLL FREE 1-800-424-4133 TO VERIFY THE UNDERGROUND LOCATION OF GAS AND TELEPHONE LINES. THE CONTRACTOR SHALL ALSO CALL M.I. RAY CLAIRBORNE OF LOCAL TELEPHONE COMPANY AT 1-800-424-4133 SO THAT THEY CAN MARK THE LOCATION OF UNDERGROUND TELEPHONE LINES.

DATE 12/30/19

DATE 12/30/19

NO EXISTING MONUMENTS OF RECORD IN THE PROJECT AREA OF THESE PLANS AT THE TIME OF SUBMITTAL.

INDEX MAP

SCALE: 1"=200'

P.O. NO. 12497U TRACT NO. 61105-16

THIRDS GROUND PAGE 42H OF 42

REVISION

REVISION

APPROVED BY

DATE

7/14/2020

THE BEARING OF THIS SECTION ARE BASED ON THE BEARING OF THE SANITARY SEWER MAINS AS SHOWN ON THE LATEST EDITION OF THE PARCEL MAPS RECORDED IN LOS ANGELES COUNTY.

INDEX MAP

SCALE: 1"=200'

P.O. NO. 12497U TRACT NO. 61105-16

THIRDS GROUND PAGE 42H OF 42

REVISION

REVISION

APPROVED BY

DATE

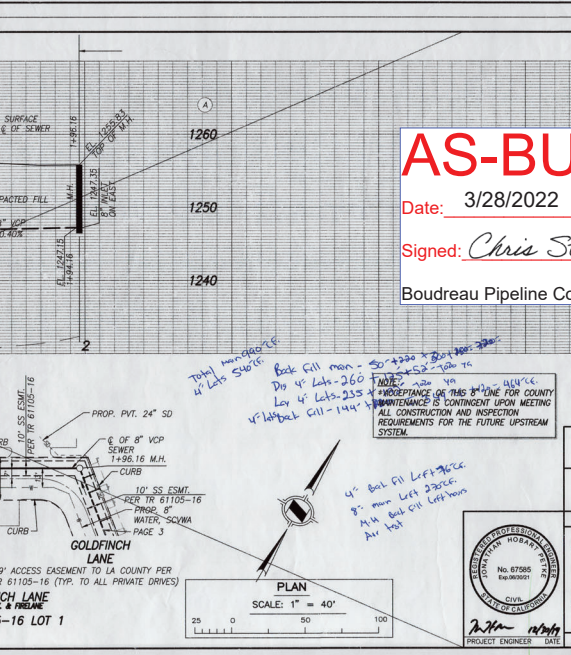
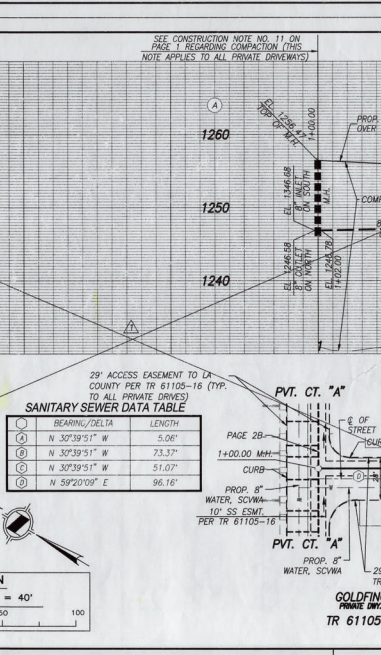
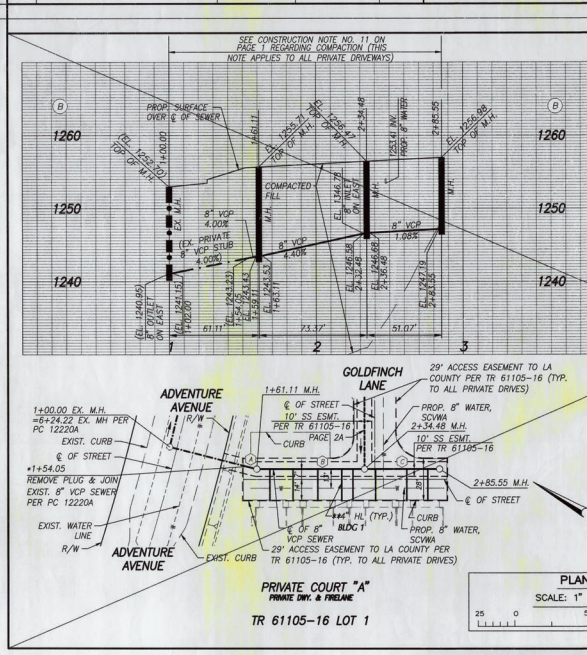
7/14/2020

THE BEARING OF THIS SECTION ARE BASED ON THE BEARING OF THE SANITARY SEWER MAINS AS SHOWN ON THE LATEST EDITION OF THE PARCEL MAPS RECORDED IN LOS ANGELES COUNTY.

811

Know what's below.

Call 811beforeyoudig.



AS-BUILT

Date: 3/28/2022

Signed: *Chris Stephens*

Boudeau Pipeline Corporation

NO LA COUNTY CHARGES FOR CONNECTION

SEE COUNTY SANITATION DISTRICTS FOR SPECIAL CONNECTION CHARGES

(951) 949-4788 EXT. 2727

SCALE: VERT. 1" = 8'

HORIZ. 1" = 40'

DOUBLE SCALE

SANITARY SEWER PLANS IN

TRACT NO. 61105-16 LOT 1 PC NO. 12497U

REVIEWED BY LAND DEVELOPMENT DIVISION

DATE 1/14/2020

HUNSAKER & ASSOCIATES

IRVINE, INC.

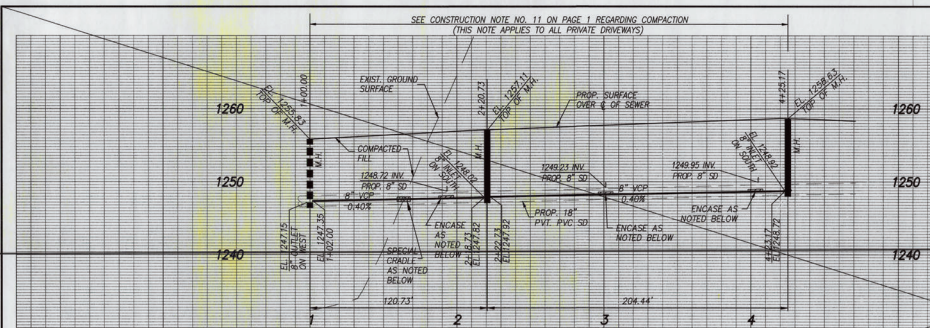
PLANNING ■ ENGINEERING ■ SURVEYING

Three Hughes ■ Irvine, CA 92618 ■ PH: (949) 583-1010 ■ FX: (949) 583-0759

12-0355 Highlights As Built

12-0355 Highlights As Built

NO LA COUNTY CHARGES FOR CONNECTION
 SEE COUNTY SANITATION DISTRICTS FOR SPECIAL CONNECTION CHARGES
 (952) 908-4286, EX. 2727
 SCALE: VERT. 1" = 8'
 HORIZ. 1" = 40'
 DOUBLE SCALE



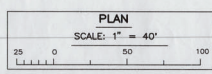
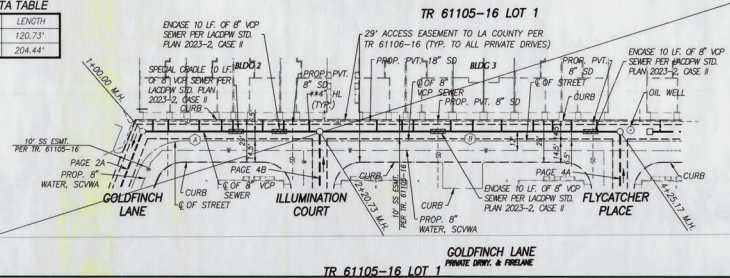
SANITARY SEWER DATA TABLE

BEARING/Delta	LENGTH
N 51°49'32" W	120.73'
N 51°49'33" W	204.44'

NOTE:
 ** BACKWATER VALVES SHALL BE REQUIRED FOR ALL UNITS.

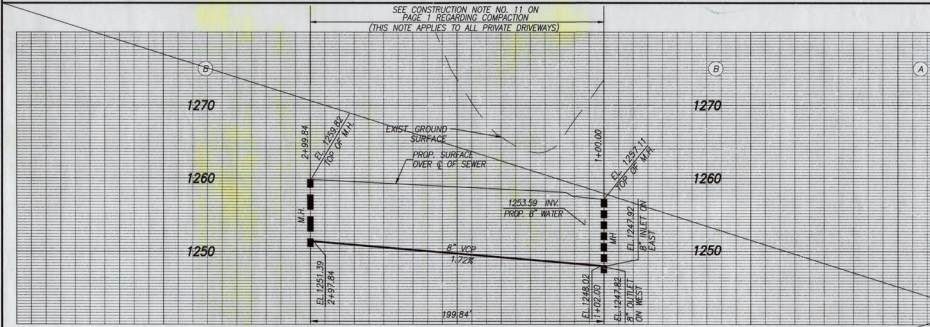
AS-BUILT

Date: 3/28/2022
 Signed: *Chris Stephens*
 Boudreau Pipeline Corporation



REVIEWED BY LAND DEVELOPMENT DIVISION
 BY *[Signature]* 1/1/2020
 FINAL MAPS, RECORDS & PLANNING SUBDIVISION PLAN CHECKING SECTION

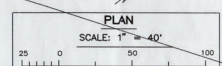
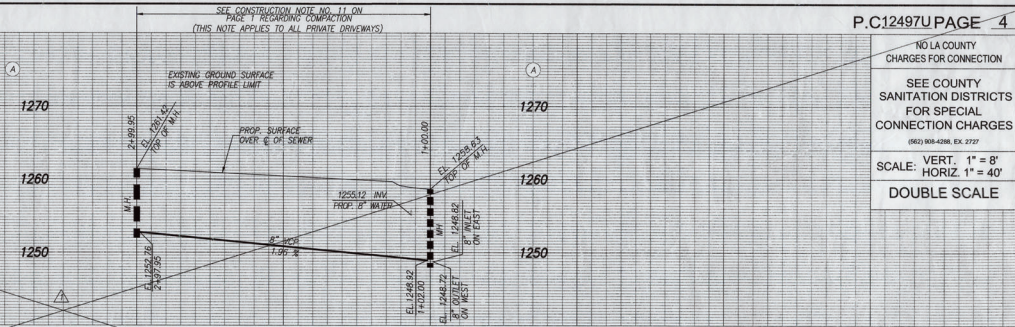
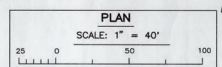
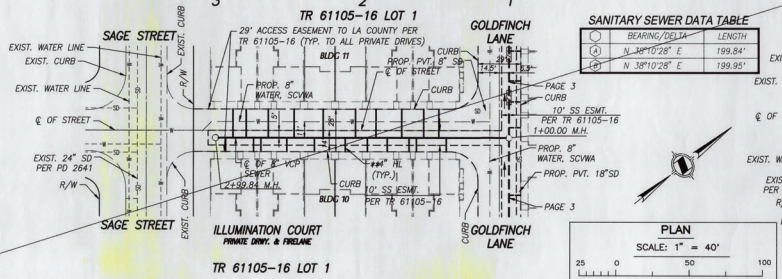
NO LA COUNTY CHARGES FOR CONNECTION
 SEE COUNTY SANITATION DISTRICTS FOR SPECIAL CONNECTION CHARGES
 (952) 908-4286, EX. 2727
 SCALE: VERT. 1" = 8'
 HORIZ. 1" = 40'
 DOUBLE SCALE



SANITARY SEWER DATA TABLE

BEARING/Delta	LENGTH
S 34°07'05" E	199.84'
N 39°11'28" E	199.95'

NOTE:
 ** BACKWATER VALVES SHALL BE REQUIRED FOR ALL UNITS.



REVIEWED BY LAND DEVELOPMENT DIVISION
 BY *[Signature]* 1/1/2020
 FINAL MAPS, RECORDS & PLANNING SUBDIVISION PLAN CHECKING SECTION



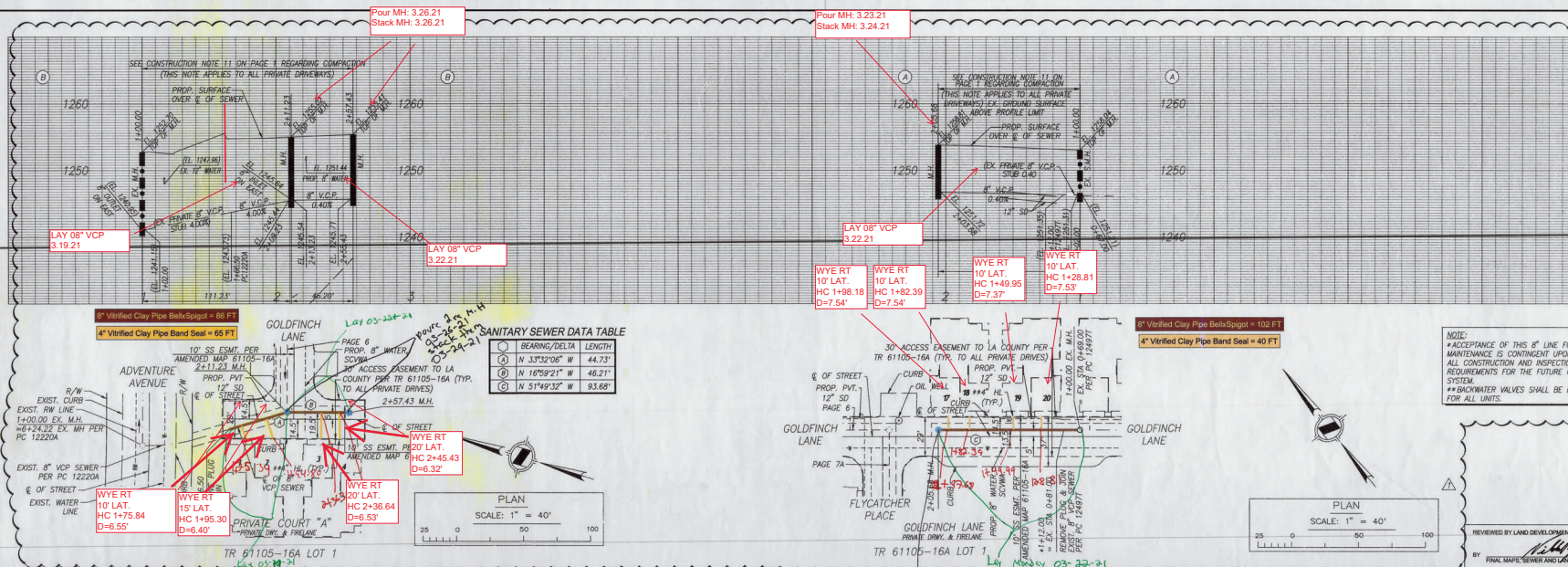
NO LA COUNTY CHARGES FOR CONNECTION

SEE COUNTY SANITATION DISTRICTS FOR SPECIAL CONNECTION CHARGES

(923) 908-4268, EX. 2727

SCALE: VERT. 1" = 8'
HORIZ. 1" = 40'

DOUBLE SCALE



REVIEWED BY LAND DEVELOPMENT DIVISION
DATE: 7/14/2020

AS-BUILT

Date: 3/28/2022

Signed: *Chris Stephens*

Boudreau Pipeline Corporation

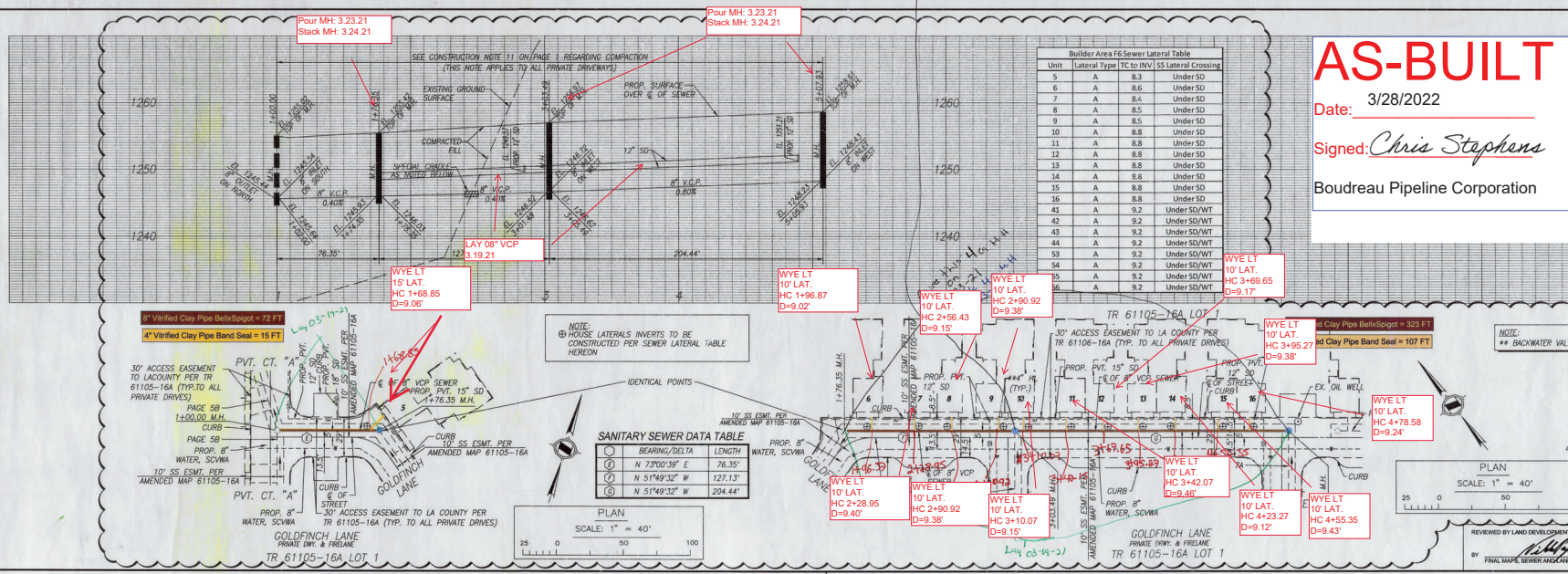
NO LA COUNTY CHARGES FOR CONNECTION

SEE COUNTY SANITATION DISTRICTS FOR SPECIAL CONNECTION CHARGES

(923) 908-4268, EX. 2727

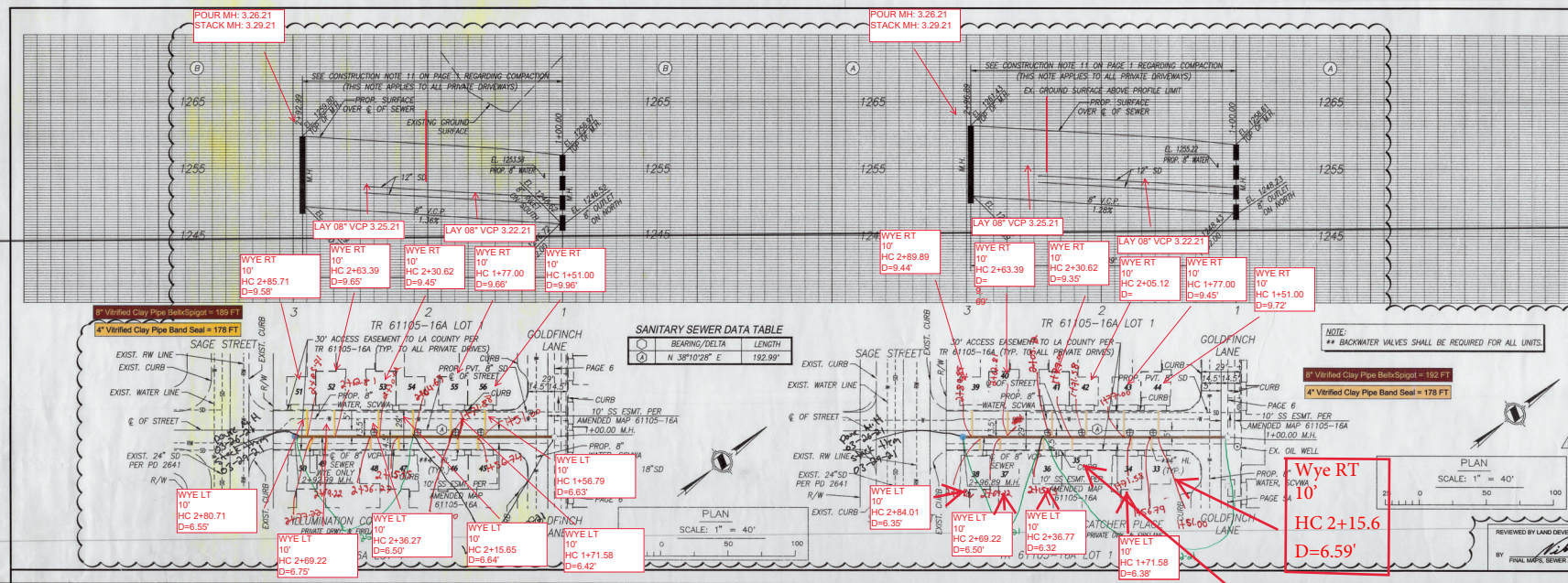
SCALE: VERT. 1" = 8'
HORIZ. 1" = 40'

DOUBLE SCALE



REVIEWED BY LAND DEVELOPMENT DIVISION
DATE: 7/14/2020

NO LA COUNTY CHARGES FOR CONNECTION
 SEE COUNTY SANITATION DISTRICTS FOR SPECIAL CONNECTION CHARGES
 (REG) 908-4268, EX. 2727
 SCALE: VERT. 1" = 8'
 HORIZ. 1" = 40'
 DOUBLE SCALE



NOTE: ** BACKWATER VALVES SHALL BE REQUIRED FOR ALL UNITS
 NOTE: HOUSE LATERALS INVERTS TO BE CONSTRUCTED PER SEWER LATERAL TABLE ON PAGE 6



REVIEWED BY LAND DEVELOPMENT DIVISION
 BY: [Signature] 7/14/2020
 FINAL MAP, SEWER AND LANDSCAPING SUBDIVISION PLAN CHECKING SECTION DATE

NO LA COUNTY CHARGES FOR CONNECTION
 SEE COUNTY SANITATION DISTRICTS FOR SPECIAL CONNECTION CHARGES
 (REG) 908-4268, EX. 2727
 SCALE: VERT. 1" = 8'
 HORIZ. 1" = 40'
 DOUBLE SCALE

AS-BUILT

Date: 3/28/2022
 Signed: *Chris Stephens*
 Boudreau Pipeline Corporation

Wye RT
 10"
 HC+15.65'
 D=6.51'



REVIEWED BY LAND DEVELOPMENT DIVISION
 BY: [Signature] DATE

© Unpublished Branch 1/1/05 - Modified: 1/1/05 - Boudreau Pipeline Corporation
 P.C. 12497U, E-Plan Printed on Jul. 02, 2020 - 4:00pm - 01