

NO LA COUNTY PUBLIC WORKS CHARGES FOR CONNECTION
SEE LOS ANGELES COUNTY SANITATION DISTRICTS FOR SPECIAL CONNECTION CHARGES

SCALE: VERT. 1" = 8'
HORIZ. 1" = 40'

DOUBLE SCALE

EIMP 2021000344

REVIEWED BY LAND DEVELOPMENT DIVISION

BY: [Signature]
SEWER PLAN CHECKING UNIT
DATE: 09/08/2021

NO.	REVISION	REVISOR	APPROVED BY	DATE
1	REVISED SEWER STATIONING	[Signature]	[Signature]	06/05/2021

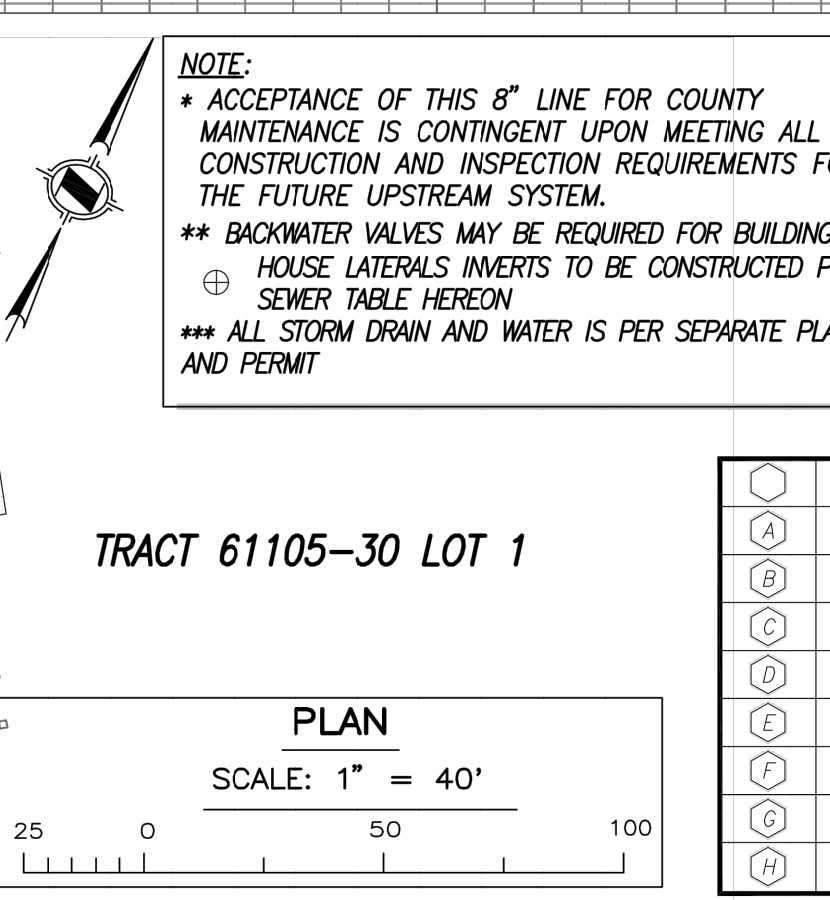
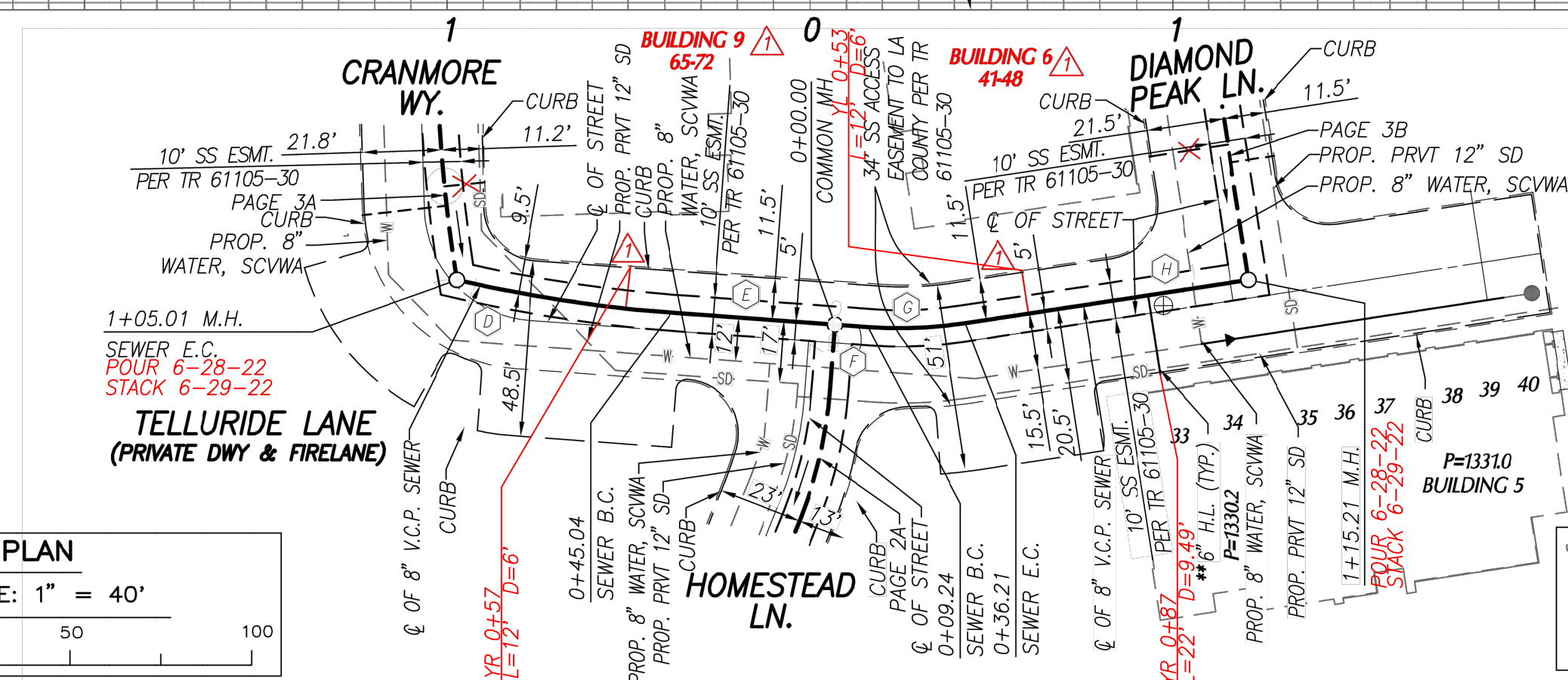
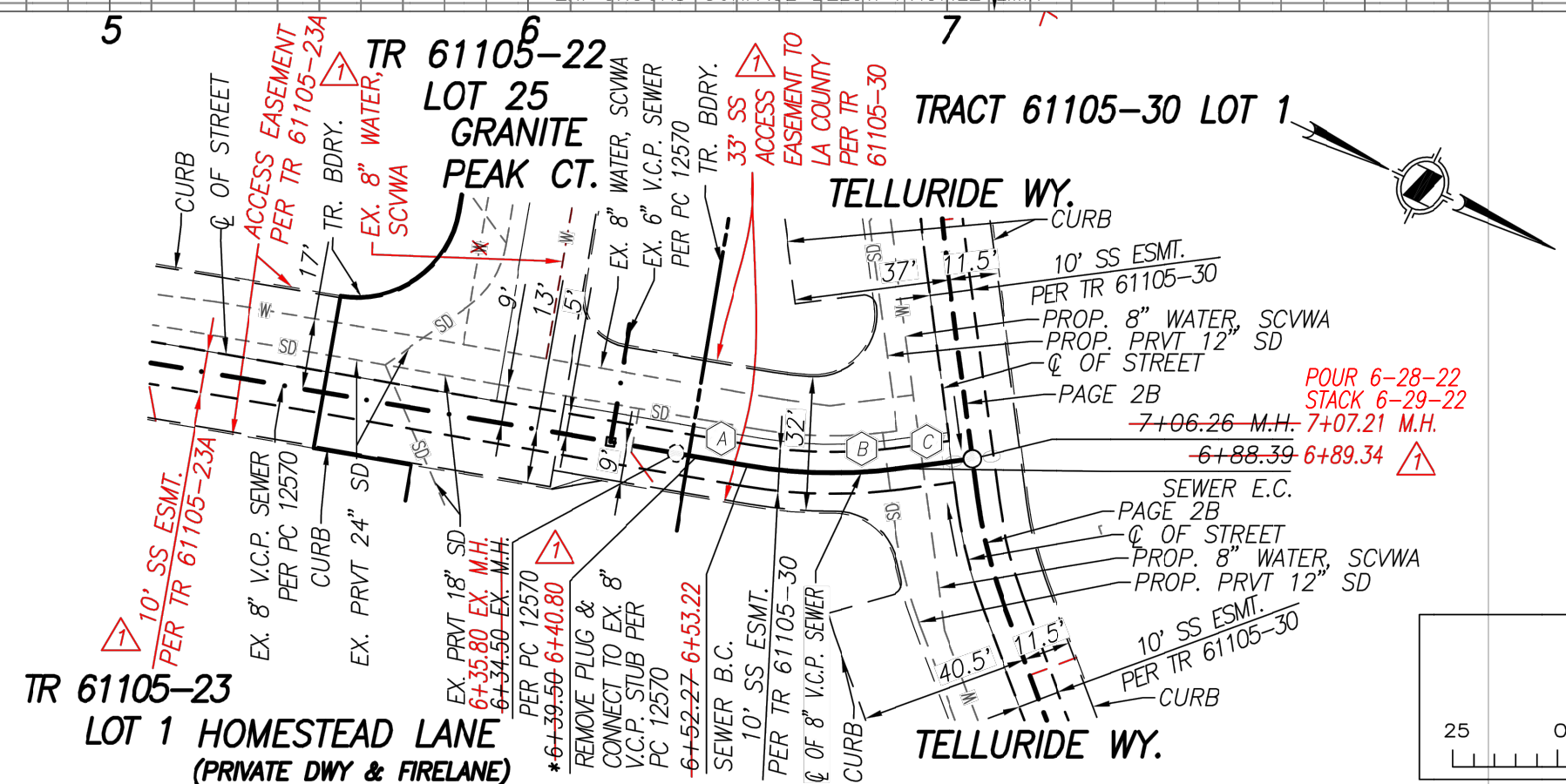
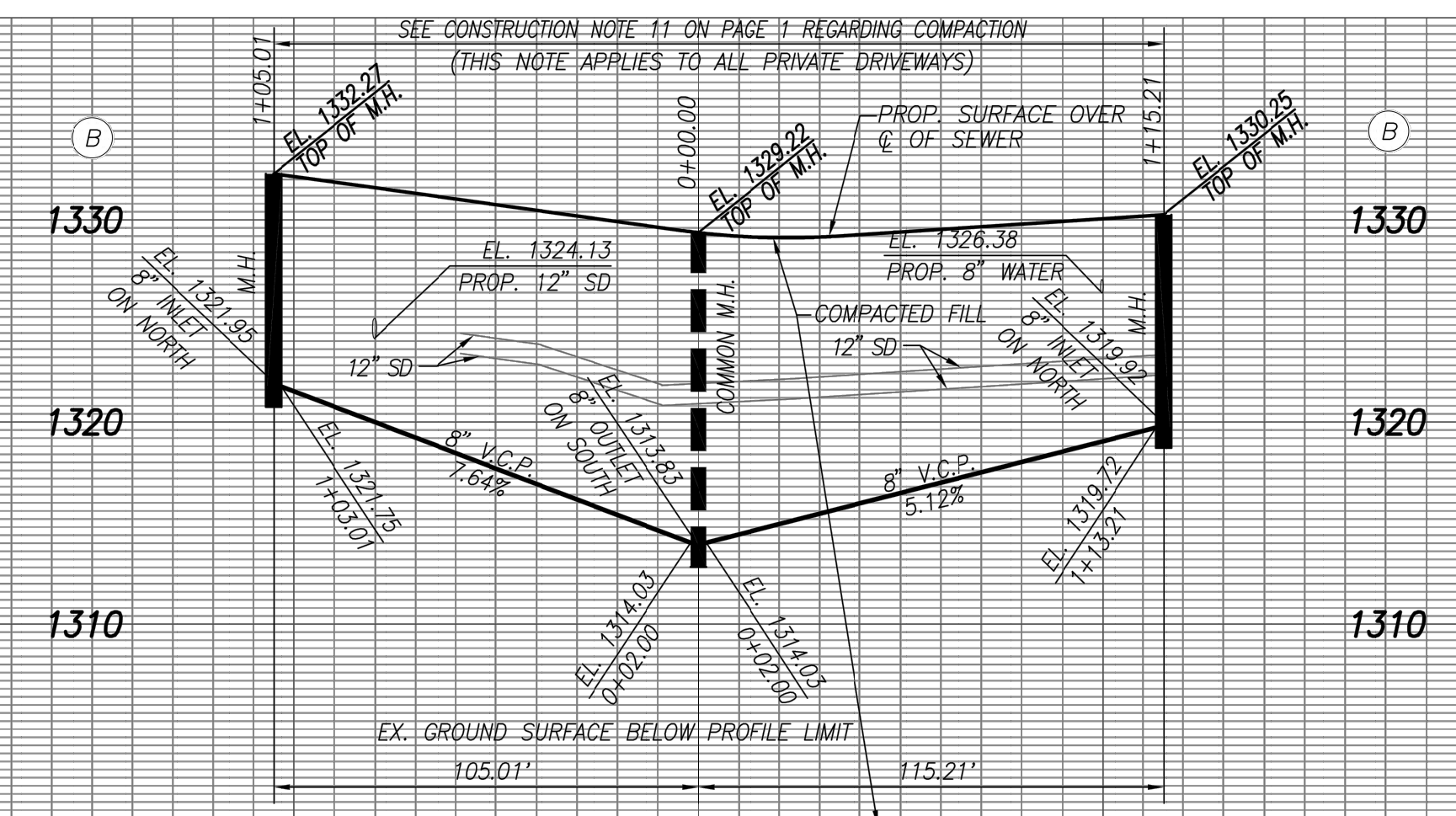
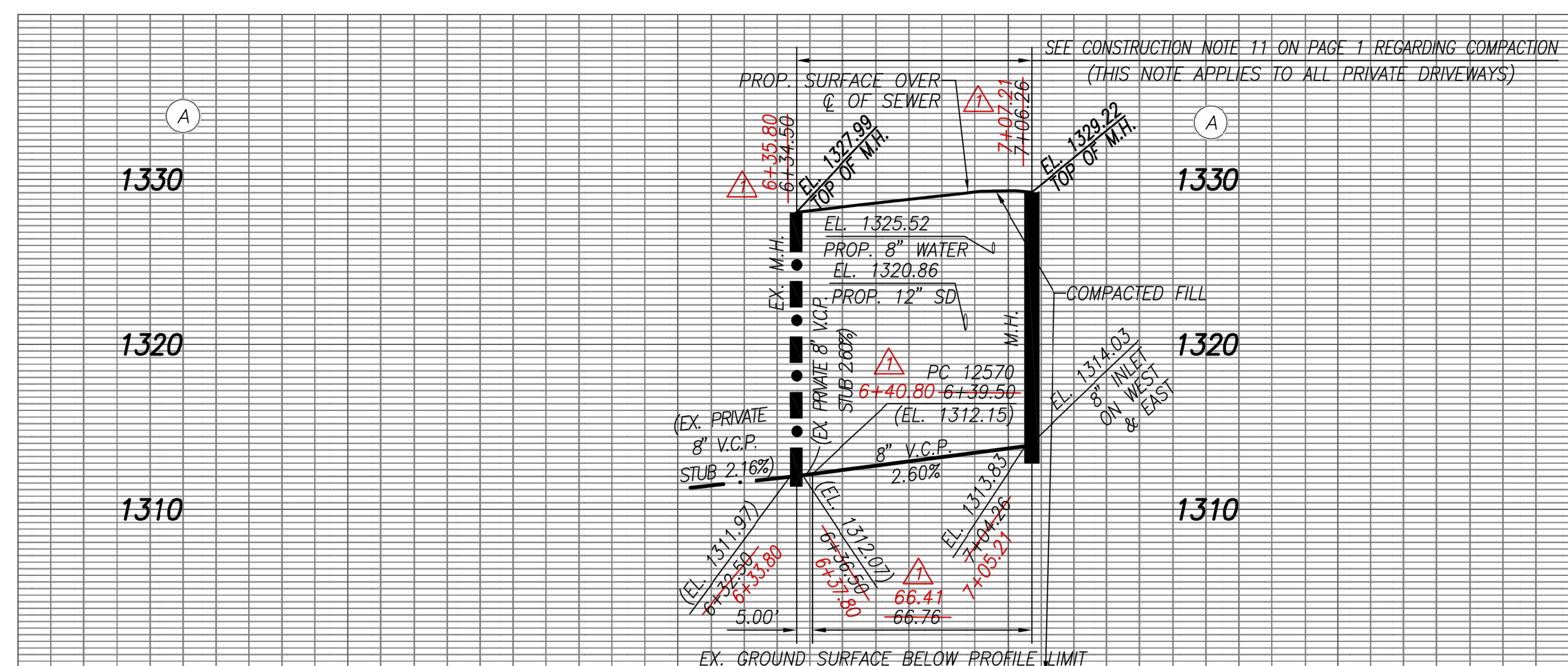


Building	Lateral Type	TC to Inv	SS Lat Crossing
3	A	9.3	Under SD
4	A	9.0	Under SD
5	A	9.5	Under SD
8	A	9.4	Under SD
9	A	6.0	0

NOTE:
 * ACCEPTANCE OF THIS 8" LINE FOR COUNTY MAINTENANCE IS CONTINGENT UPON MEETING ALL CONSTRUCTION AND INSPECTION REQUIREMENTS FOR THE FUTURE UPSTREAM SYSTEM.
 ** BACKWATER VALVES MAY BE REQUIRED FOR BUILDING 5 HOUSE LATERALS INVERTS TO BE CONSTRUCTED PER SEWER TABLE HEREON
 *** ALL STORM DRAIN AND WATER IS PER SEPARATE PLAN AND PERMIT

SANITARY SEWER DATA TABLE

BEARING/DELTA	RADIUS	LENGTH	TANGENT
A N 16°00'12" W	-	12.42'	-
B 17°14'35"	120.00'	36.11'	18.19'
C N 33°14'47" W	-	17.87'	-
D 09°02'31"	380.00'	59.97'	30.05'
E N 56°45'13" E	-	45.04'	-
F N 56°45'13" E	-	9.24'	-
G 12°52'37"	120.00'	26.97'	13.54'
H N 43°52'36" E	-	78.99'	-



PLAN SCALE: 1" = 40'

PLAN SCALE: 1" = 40'

NO LA COUNTY PUBLIC WORKS CHARGES FOR CONNECTION
SEE LOS ANGELES COUNTY SANITATION DISTRICTS FOR SPECIAL CONNECTION CHARGES

SCALE: VERT. 1" = 8'
HORIZ. 1" = 40'

DOUBLE SCALE

EIMP 2021000344

REVIEWED BY LAND DEVELOPMENT DIVISION

BY: [Signature]
SEWER PLAN CHECKING UNIT
DATE: 09/08/2021

NO.	REVISION	REVISOR	APPROVED BY	DATE
1	REVISED SEWER STATIONING	[Signature]	[Signature]	06/05/2021

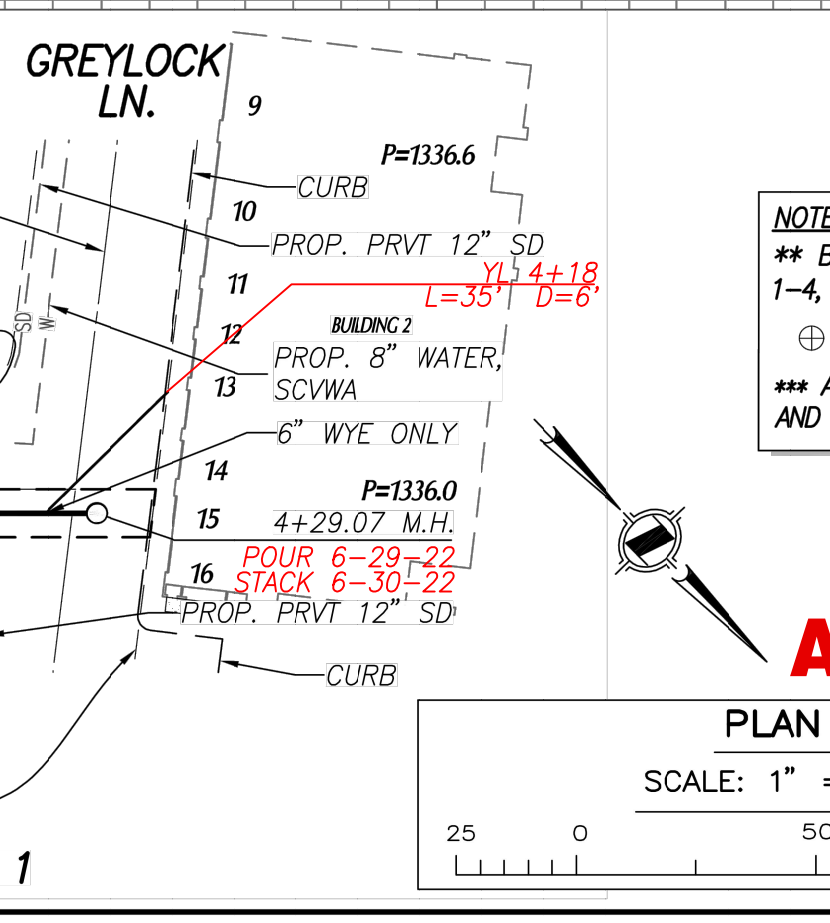
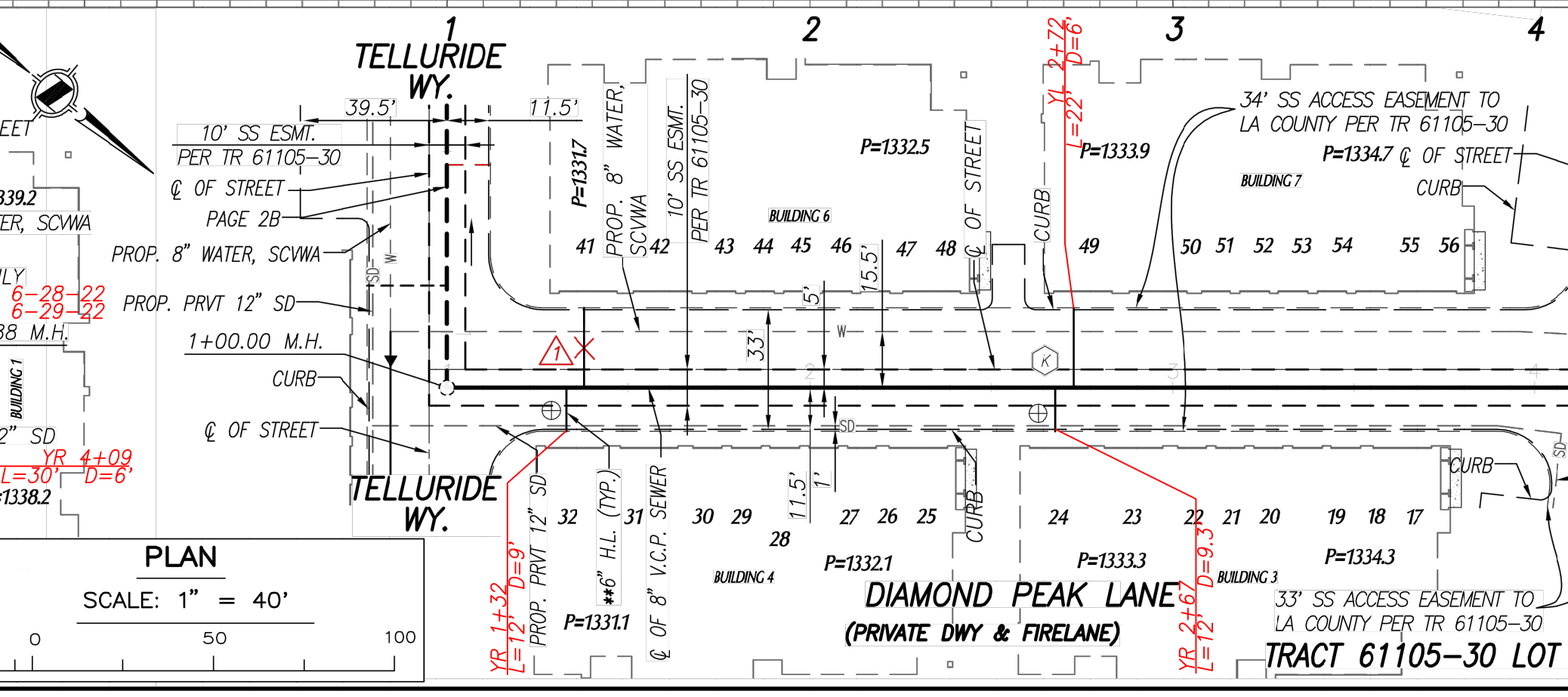
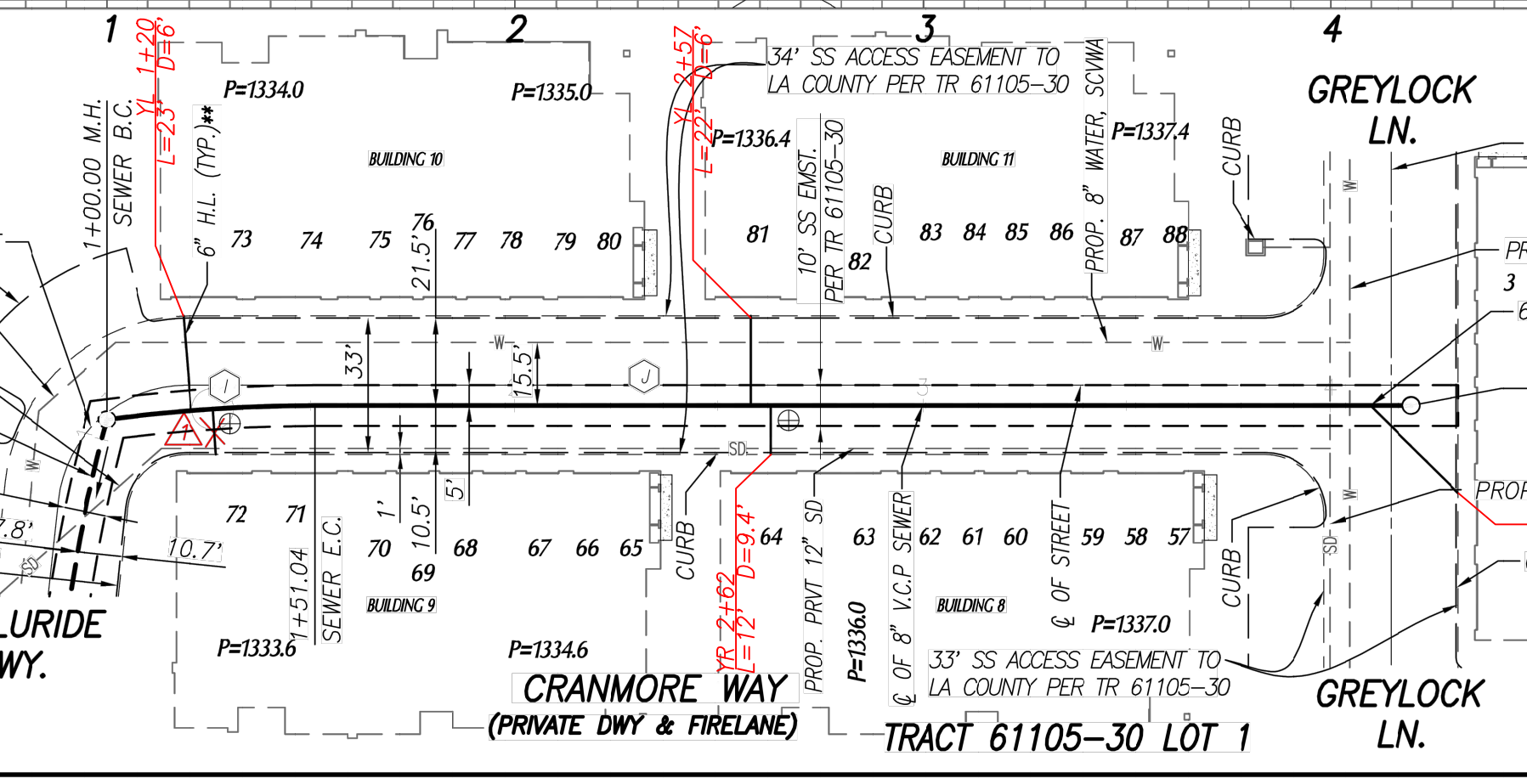
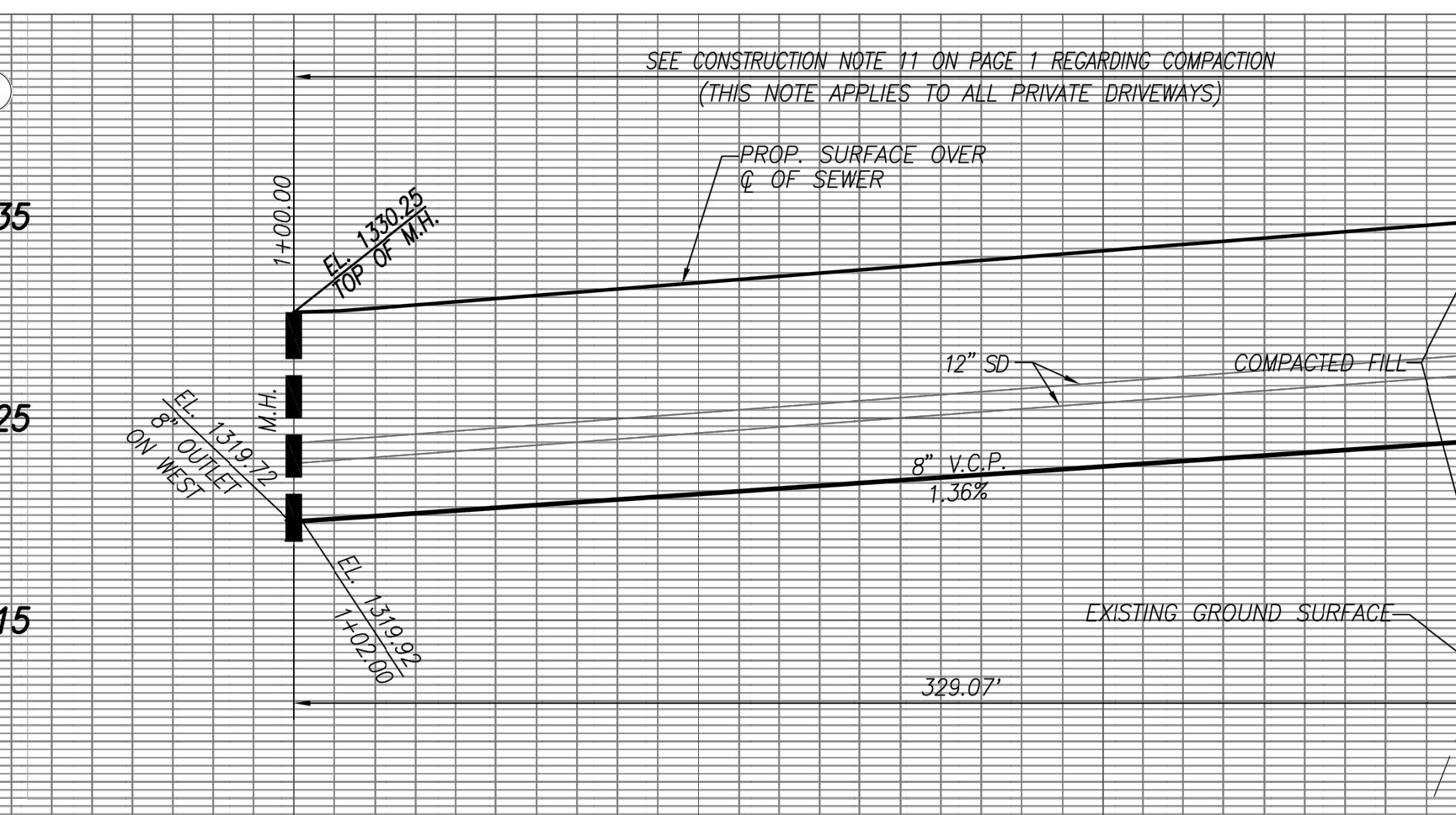
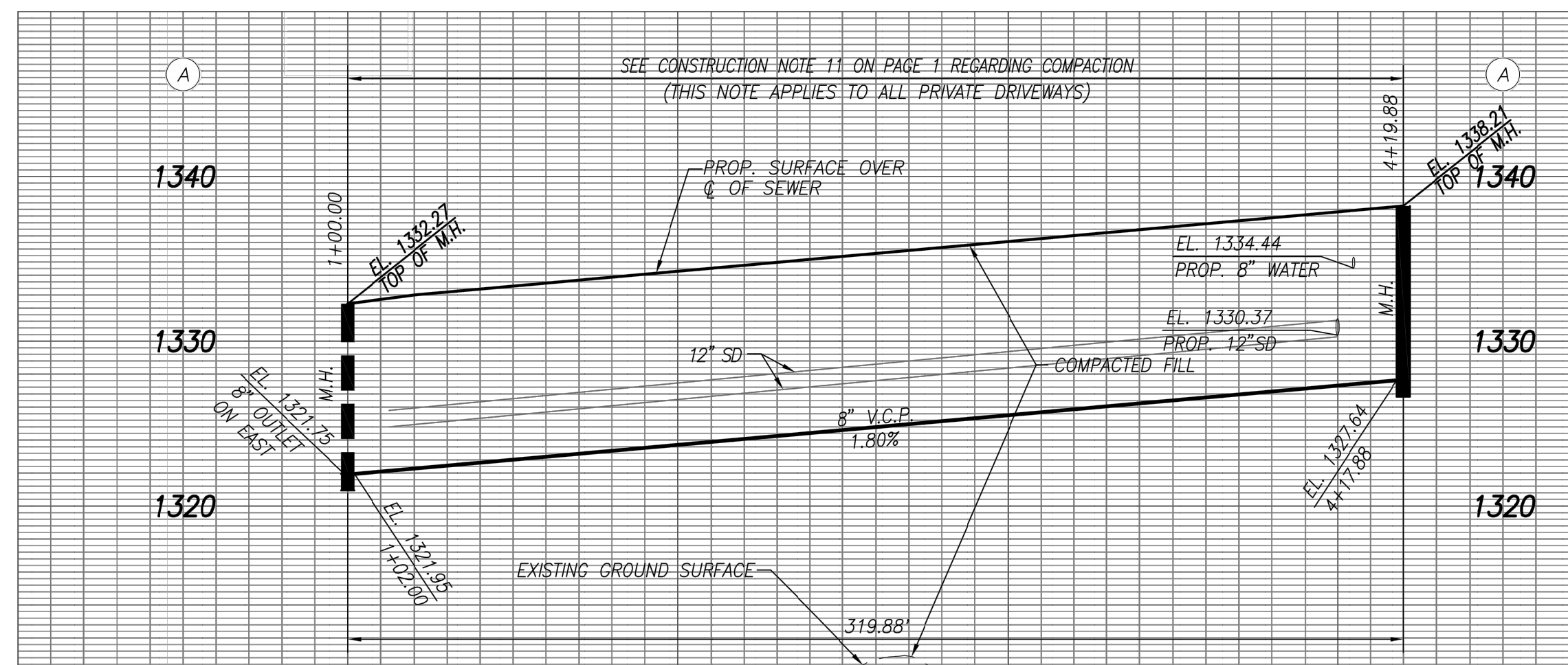


NOTE:
 ** BACKWATER VALVES MAY BE REQUIRED FOR BUILDINGS 1-4, 6-11.
 HOUSE LATERALS INVERTS TO BE CONSTRUCTED PER SEWER TABLE ON PAGE 2
 *** ALL STORM DRAIN AND WATER IS PER SEPARATE PLAN AND PERMIT

AS-BUILT

SANITARY SEWER DATA TABLE

BEARING/DELTA	RADIUS	LENGTH	TANGENT
07°41'46"	380.00'	51.04'	25.56'
N 39°14'47" W	-	268.84'	-
N 46°07'24" W	-	329.07'	-



PLAN SCALE: 1" = 40'

PLAN SCALE: 1" = 40'