

REDONDO & WILMINGTON BLVD.

CITRUS STREET

AVENUE

NARBONNE AVENUE

# MAP OF CYPRESS STREET FROM CITRUS STREET TO NARBONNE AVENUE

COUNTY SURVEYORS MAP N° B-319  
SHEET NO. 1 OF 3 SHEETS  
SCALE 1 INCH = 40 FT.

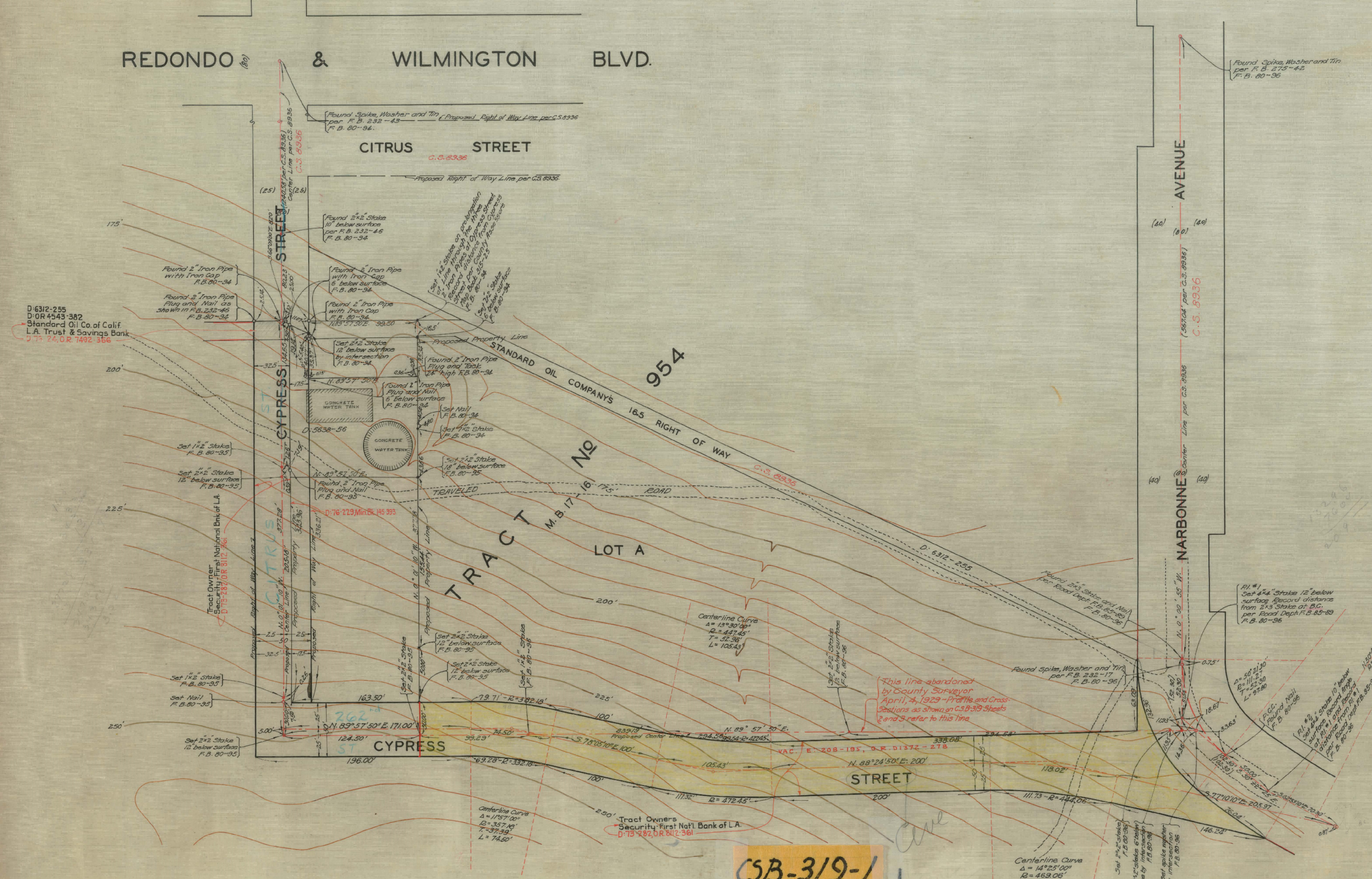
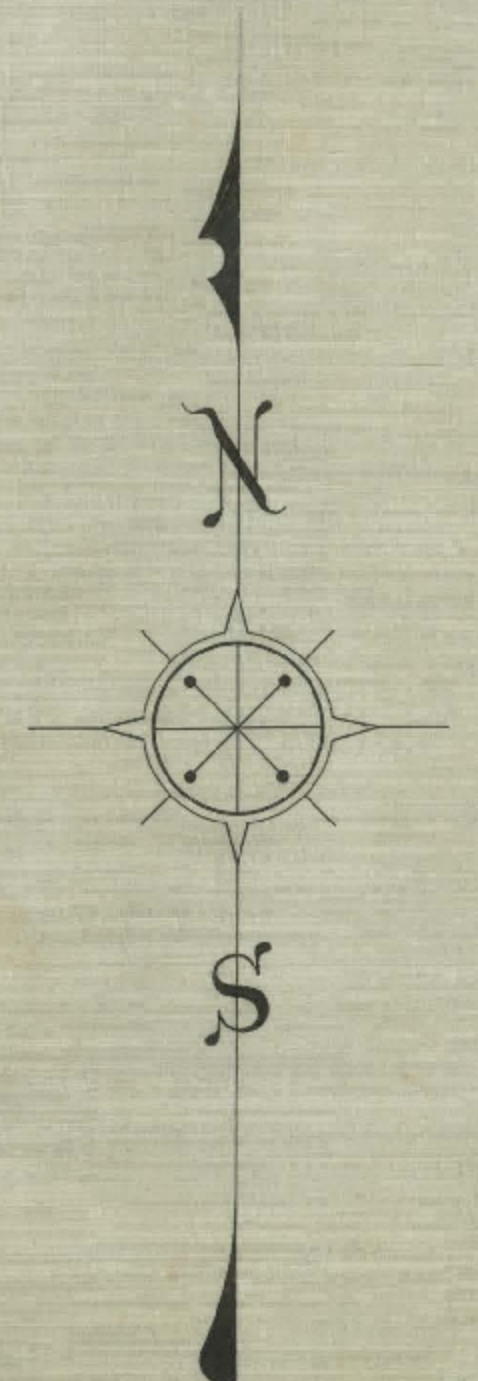
WORK ORDER N° 924  
J.E. ROCKHOLD - COUNTY SURVEYOR  
SURVEYED NOVEMBER 1928  
SURVEYED UNDER INSTRUCTIONS OF THE BOARD OF SUPERVISORS PER ORDER DATED NOVEMBER 22, 1928  
BEARINGS ARE BASED ON THE BEARING OF CYPRESS STREET PER C.S. 8936

F.B. 80 - 94 - 96  
FIELD WORK BY... P. T. DUNLAP  
OFFICE WORK BY... C. J. TERRY  
CHECKED BY... M. DARLING  
TOPOGRAPHY BY... T. H. MONCURE

For Profile see C.S. B-319 Sheet 2  
For Cross Sections see C.S. B-319 Sheet 3

Sht. 27  
Sht. 28

Cypress Ave. (running E. to W.) changed to 262<sup>nd</sup> St. D. 49-208



CSB-319-1  
A1 of A1